

User's Guide

L1750S
L1950S
L1751S
L1951S
L1750SQ
L1950SQ
L1751SQ
L1951SQ

Make sure to read the **Important Precautions** before using the product.
Keep the User's Guide(CD) in an accessible place for future reference.

See the label attached on the product and give the information to your dealer when you ask for service.

This unit has been engineered and manufactured to ensure your personal safety, however improper use may result in potential electrical shock or fire hazards. In order to allow the proper operation of all safeguards incorporated in this display, observe the following basic rules for its installation, use, and servicing.

On Safety

Use only the power cord supplied with the unit. In case you use another power cord, make sure that it is certified by the applicable national standards if not being provided by the supplier. If the power cable is faulty in any way, please contact the manufacturer or the nearest authorized repair service provider for a replacement.

The power supply cord is used as the main disconnection device. Ensure that the socket-outlet is easily accessible after installation.

Operate the display only from a power source indicated in the specifications of this manual or listed on the display. If you are not sure what type of power supply you have in your home, consult with your dealer.

Overloaded AC outlets and extension cords are dangerous. So are frayed power cords and broken plugs. They may result in a shock or fire hazard. Call your service technician for replacement.

Do not Open the Display.

- There are no user serviceable components inside.
- There are Dangerous High Voltages inside, even when the power is OFF.
- Contact your dealer if the display is not operating properly.

To Avoid Personal Injury :

- Do not place the display on a sloping shelf unless properly secured.
- Use only a stand recommended by the manufacturer.

To Prevent Fire or Hazards:

- Always turn the display OFF if you leave the room for more than a short period of time. Never leave the display ON when leaving the house.
- Keep children from dropping or pushing objects into the display's cabinet openings. Some internal parts carry hazardous voltages.
- Do not add accessories that have not been designed for this display.
- During a lightning storm or when the display is to be left unattended for an extended period of time, unplug it from the wall outlet.

On Installation

Do not allow anything to rest upon or roll over the power cord, and do not place the display where the power cord is subject to damage.

Do not use this display near water such as near a bathtub, washbowl, kitchen sink, laundry tub, in a wet basement, or near a swimming pool.

Displays are provided with ventilation openings in the cabinet to allow the release of heat generated during operation. If these openings are blocked, built-up heat can cause failures which may result in a fire hazard. Therefore, NEVER:

- Block the bottom ventilation slots by placing the display on a bed, sofa, rug, etc.
- Place the display in a built-in enclosure unless proper ventilation is provided.
- Cover the openings with cloth or other material.
- Place the display near or over a radiator or heat source.

Do not rub or strike the Active Matrix LCD with anything hard as this may scratch, mar, or damage the Active Matrix LCD permanently.

Do not press the LCD screen with your finger for a long time as this may cause some afterimages.

Some dot defects may appear as Red, Green or Blue spots on the screen. However, this will have no impact or effect on the display performance.

If possible, use the recommended resolution to obtain the best image quality for your LCD display. If used under any mode except the recommended resolution, some scaled or processed images may appear on the screen. However, this is characteristic of the fixed-resolution LCD panel.

On Cleaning

- Unplug the display before cleaning the face of the display screen.
- Use a slightly damp (not wet) cloth. Do not use an aerosol directly on the display screen because over-spraying may cause electrical shock.

On Repacking

- Do not throw away the carton and packing materials. They make an ideal container in which to transport the unit. When shipping the unit to another location, repack it in its original material.

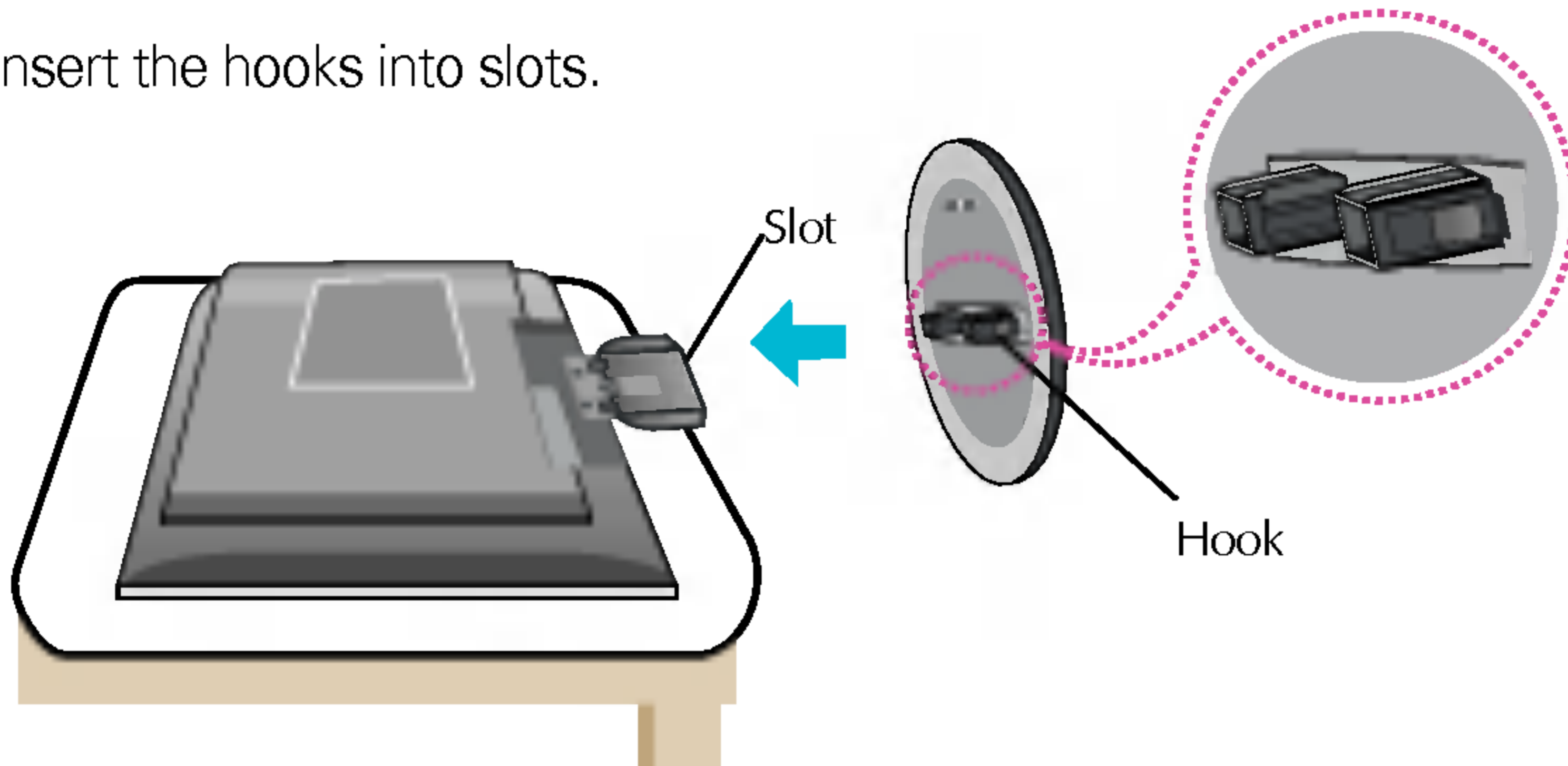
On Disposal

- The fluorescent lamp used in this product contains a small amount of mercury.
- Do not dispose of this product with general household waste.
Disposal of this product must be carried out in accordance to the regulations of your local authority.

- Before setting up the monitor, ensure that the power to the monitor, the computer system, and other attached devices is turned off.

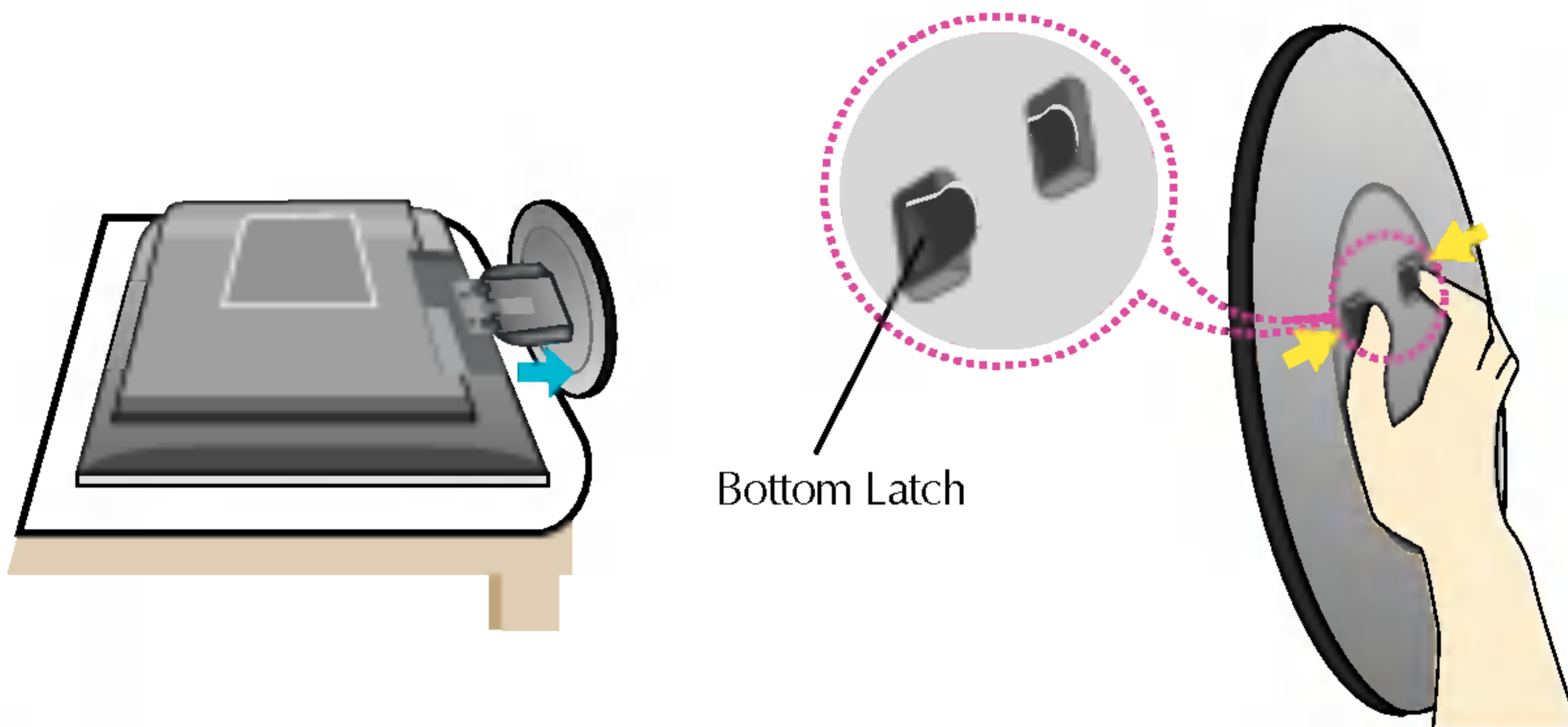
Connecting the stand base

1. Place the monitor with its front facing downward on a cushion or soft cloth.
2. Align the hooks on the stand base with the matching slots in the base of the monitor.
3. Insert the hooks into slots.



Removing the stand base

1. Place the monitor with its front facing downward on a cushion or soft cloth.
2. To remove the stand base, hold the bottom of the stand with one hand and pull the base bottom latch with the other hand, as shown in the figure.



Important

- This illustration depicts the general model of connection. Your monitor may differ from the items shown in the picture.
- Once you connect the stand base, try not to disconnect it.
- Do not carry the product upside down holding only the stand base. The product may fall and get damaged or injure your foot.

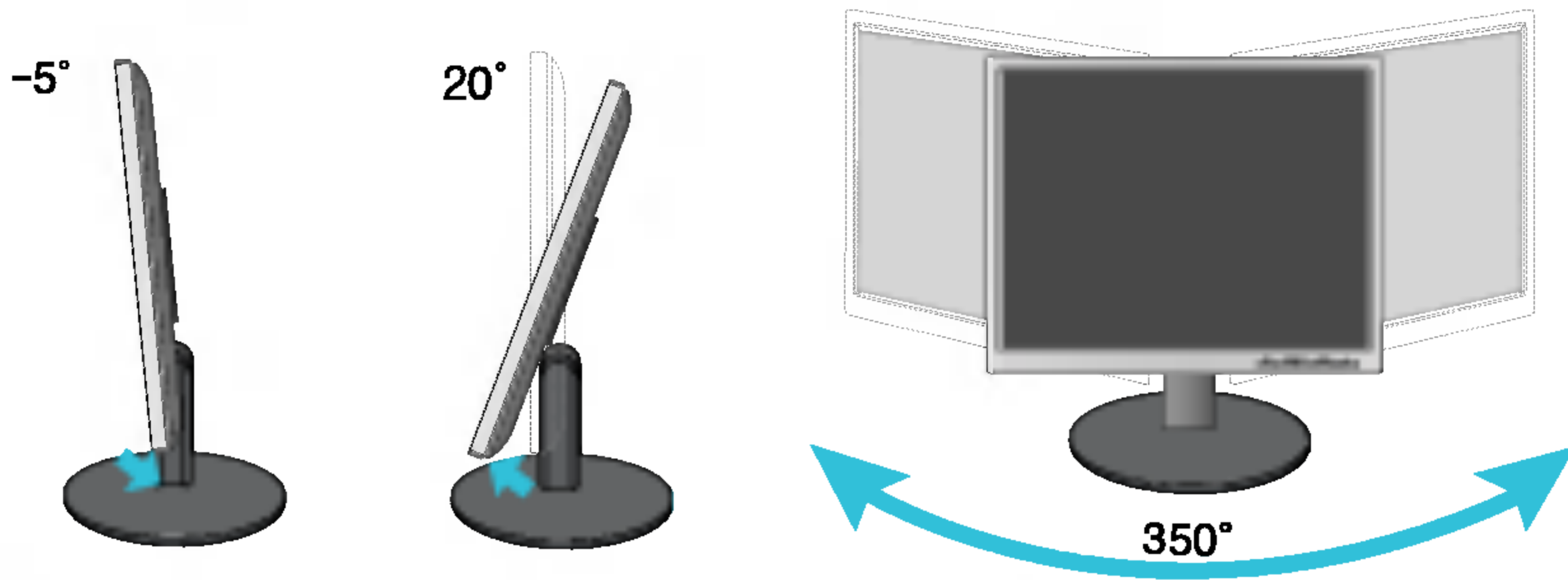
- Before setting up the monitor, ensure that the power to the monitor, the computer system, and other attached devices is turned off.

Positioning your display

1. Adjust the position of the panel in various ways for maximum comfort.

■ Tilt Range : -5° ~ 20°

■ Swivel : 350°

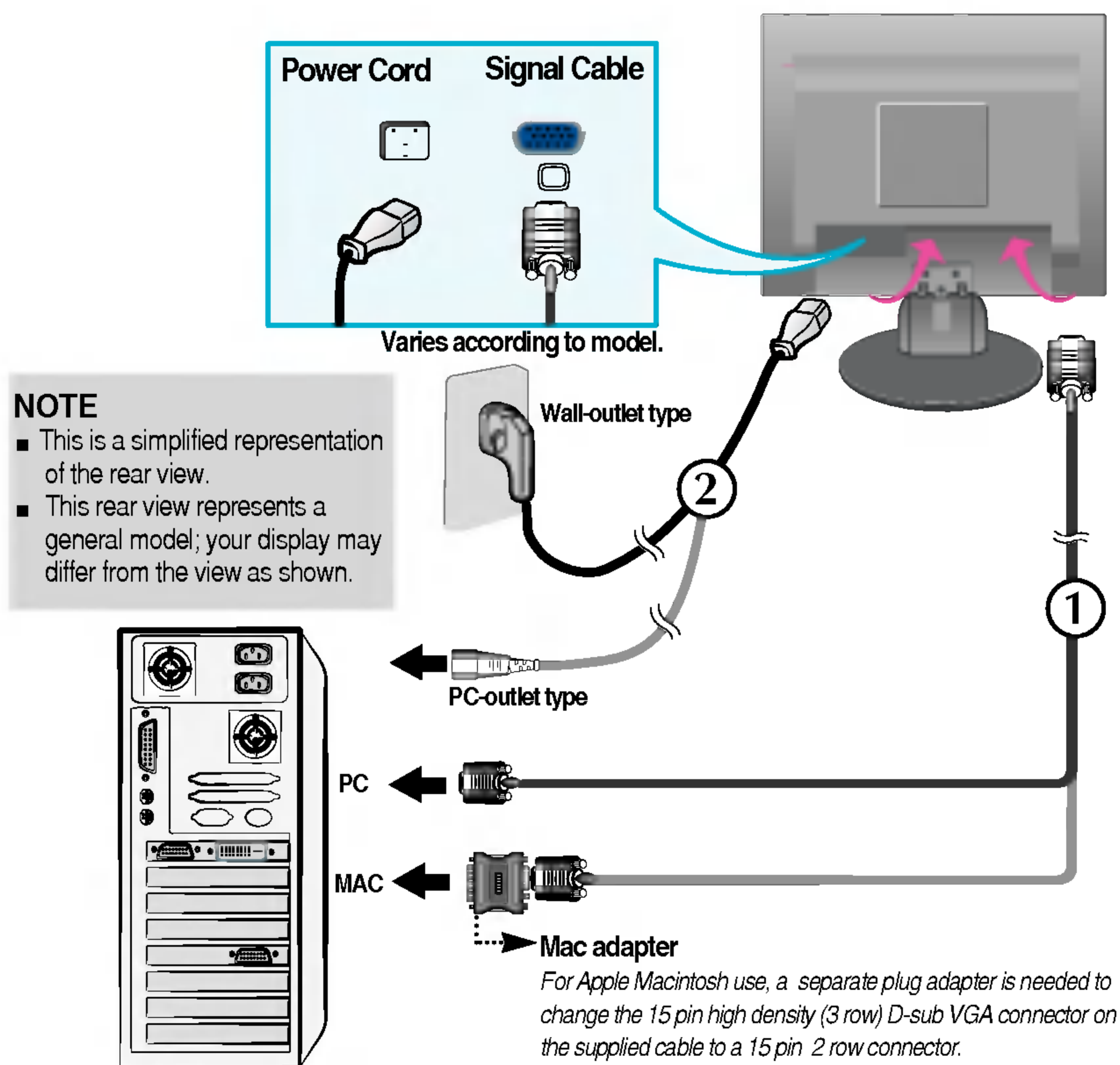



Ergonomic

It is recommended that in order to maintain an ergonomic and comfortable viewing position, the forward tilt angle of the monitor should not exceed 5 degrees.

Using the Computer

1. Place the monitor in a convenient, well-ventilated location near your computer.
2. Connect the signal cable. When attached, tighten the thumbscrews to secure the connection. ①
3. Connect the power cord into a proper power outlet that is easily accessible and close to the display. ②



4. Press  button on the front switch panel to turn the power on. When monitor power is turned on, the **'Self Image Setting Function'** is executed automatically.
(Only Analog Mode)

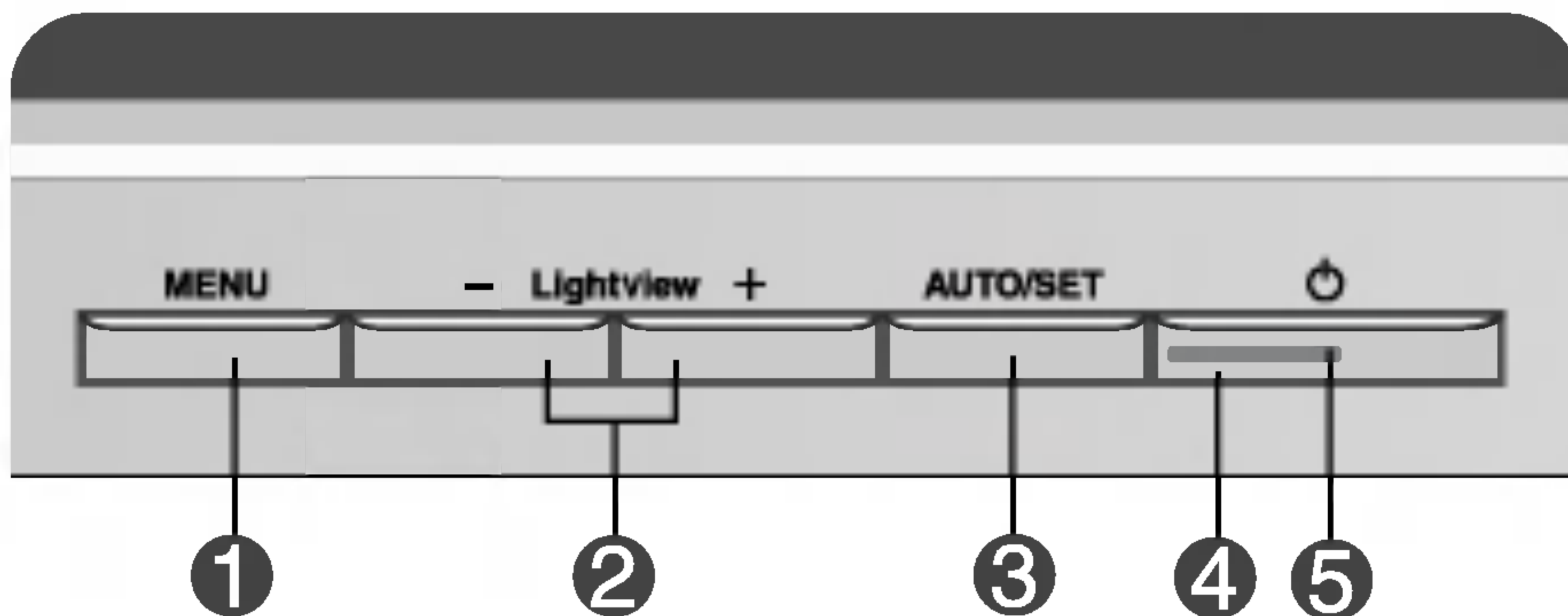


NOTE

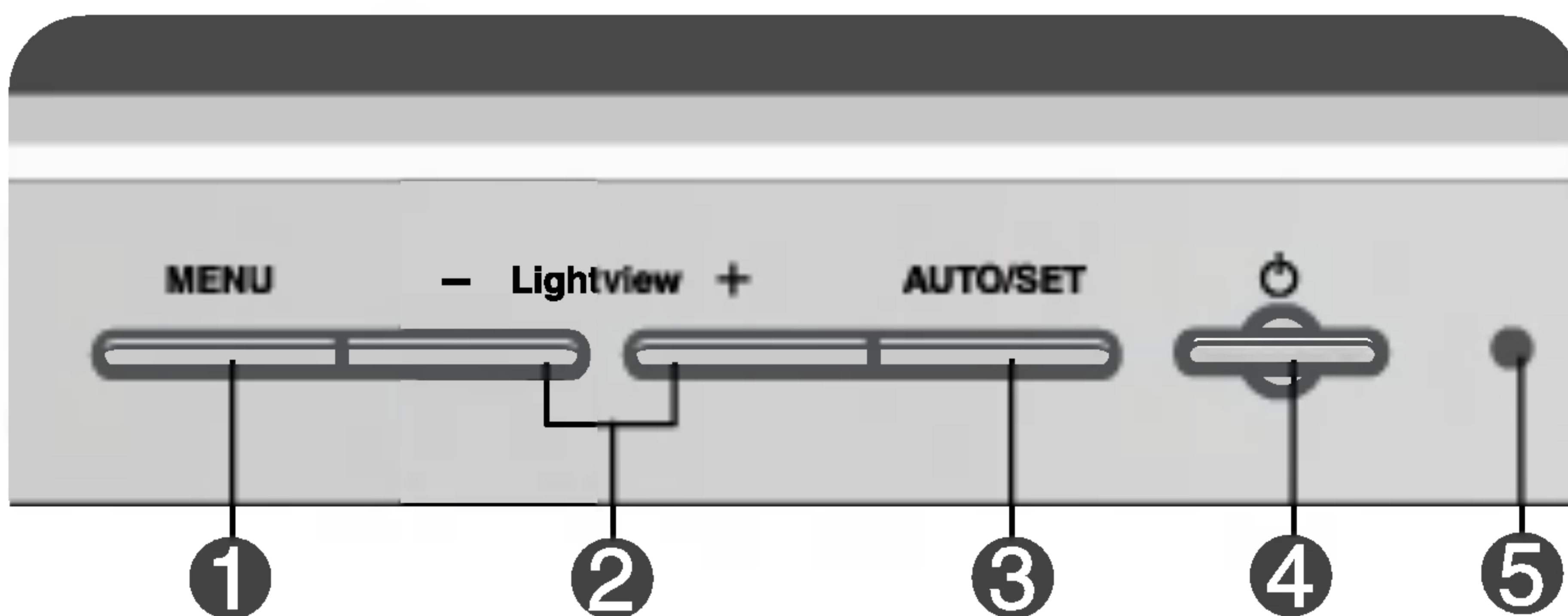
'Self Image Setting Function'? This function provides the user with optimal display settings. When the user connects the monitor for the first time, this function automatically adjusts the display to optimal settings for individual input signals. If you want to adjust the monitor while in use, or wish to manually run this function once again, push the 'AUTO/SET' button on the front panel of the monitor. Otherwise, you may execute the 'Factory reset' option on the OSD adjustment menu. However, be aware that this option initializes all the menu items except 'Language'.



Front Panel Controls



<L1750S/L1750SQ/L1950S/L1950SQ>



<L1751S/L1751SQ/L1951S/L1951SQ>



| Control | Function |
|---|---|
| <p>1 MENU Button</p>   | <p>Use this button to enter or exit the On Screen Display.</p> <p>OSD LOCKED/UNLOCKED</p> <p>This function allows you to lock the current control settings, so that they cannot be inadvertently changed. Press and hold the MENU button for 5 seconds. The message "OSD LOCKED" should appear.</p> <p>You can unlock the OSD controls at any time by pushing the MENU button for 5 seconds. The message "OSD UNLOCKED" should appear.</p> |

| Control | Function |
|--|---|
| <p>2 - + Buttons</p> <hr/>  | <p>Use these buttons to select or adjust functions in the On Screen Display.</p> <hr/> <p>Lightview hot key</p> <p>DAY This feature lets you easily select the best desired image condition optimized to the environment (ambient illumination, image types etc).</p> <p>NIGHT</p> <ul style="list-style-type: none"> • DAY : Bright ambient illumination • NIGHT : Dark ambient illumination • TEXT : For text images (Word processing etc.) • MOVIE : For animation images in videos or movies • PHOTO : For pictures or drawings • NORMAL : This is under normal operating conditions |
| <p>3 AUTO/SET Button</p> <hr/>  | <p>Use this button to enter a selection in the On Screen Display.</p> <hr/> <p>AUTO IMAGE ADJUSTMENT</p> <p>When adjusting your display settings, always press the AUTO/SET button before entering the On Screen Display(OSD). This will automatically adjust your display image to the ideal settings for the current screen resolution size (display mode).</p> <p>The best display mode is</p> <p>17 inch monitor : 1280x1024</p> <p>19 inch monitor : 1280x1024</p> |
| <p>4 Power Button</p> | <p>Use this button to turn the display on or off.</p> |
| <p>5 Power Indicator</p> | <p>This Indicator lights up green when the display operates normally(On Mode). If the display is in Sleep Mode (Energy Saving), this indicator color changes to amber.</p> |

Screen Adjustment

Making adjustments to the image size, position and operating parameters of the display is quick and easy with the On Screen Display Control system. A short example is given below to familiarize you with the use of the controls. The following section is an outline of the available adjustments and selections you can make using the OSD.

NOTE

- Allow the display to stabilize for at least 30 minutes before making image adjustments.

To make adjustments in the On Screen Display, follow these steps:

MENU → - + → AUTO/SET → - + → MENU

- 1** Press the **MENU Button**, then the main menu of the OSD appears.
- 2** To access a control, use the **- or + Buttons**. When the icon you want becomes highlighted, press the **AUTO/SET Button**.
- 3** Use the **- / + Buttons** to adjust the image to the desired level. Use the **AUTO/SET Button** to select other sub-menu items.
- 4** Push the **MENU Button** once to return to the main menu to select another function. Push the **MENU Button** twice to exit from the OSD.

On Screen Display(OSD) Selection and Adjustment

The following table indicates all the On Screen Display control, adjustment, and setting menus.

| Main menu | Sub menu | | | Reference |
|----------------|-----------------|------------|---|---|
| PICTURE | BRIGHTNESS | | ● | To adjust the brightness, contrast and gamma of the screen |
| | CONTRAST | | ● | |
| | GAMMA | | ● | |
| COLOR | PRESET | 6500K | ● | To customize the color of the screen |
| | | 9300K | ● | |
| | RED | | ● | |
| | GREEN | | ● | |
| | BLUE | | ● | |
| POSITION | HORIZONTAL | | ● | To adjust the position of the screen |
| | VERTICAL | | ● | |
| TRACKING | CLOCK | | ● | To improve the clarity and stability of the screen |
| | PHASE | | ● | |
| SETUP | LANGUAGE | | ● | To customize the screen status for a user's operating environment |
| | OSD POSITION | HORIZONTAL | ● | |
| | | VERTICAL | ● | |
| | WHITE BALANCE | | ● | |
| | POWER INDICATOR | | ● | |
| | FACTORY RESET | | ● | |
| ● : Adjustable | | | | |


NOTE

- The order of icons may differ depending on the model (A9~A12).

On Screen Display(OSD) Selection and Adjustment

You were introduced to the procedure of selecting and adjusting an item using the OSD system. Listed below are the icons, icon names, and icon descriptions of the all items shown on the Menu.

Press the MENU Button, then the main menu of the OSD appears.



The screenshot shows the 'PICTURE' OSD menu. On the left is a vertical list of icons: a monitor, a sun, a monitor with a circle, a monitor with a gamma symbol, and a gear. The main area shows three settings: 'BRIGHTNESS' with a sun icon and a value of 50, 'CONTRAST' with a monitor icon and a value of 50, and 'GAMMA' with a gamma symbol and a value of 0. Each setting has a horizontal bar with minus and plus buttons. At the bottom are 'MENU', left and right arrow buttons, and 'SET' buttons.

Menu Name — PICTURE

Icons — [Sun icon] BRIGHTNESS 50
[Monitor icon] CONTRAST 50
[Gamma icon] GAMMA 0

Sub-menus — [Adjustment bar]


Button Tip

- MENU [Left/Right Arrow] : Exit
- - + : Adjust (Decrease/Increase)
- SET [Enter] : Enter
- [Down Arrow] : Select another sub-menu


NOTE

- OSD (On Screen Display) menu languages on the monitor may differ from the manual.



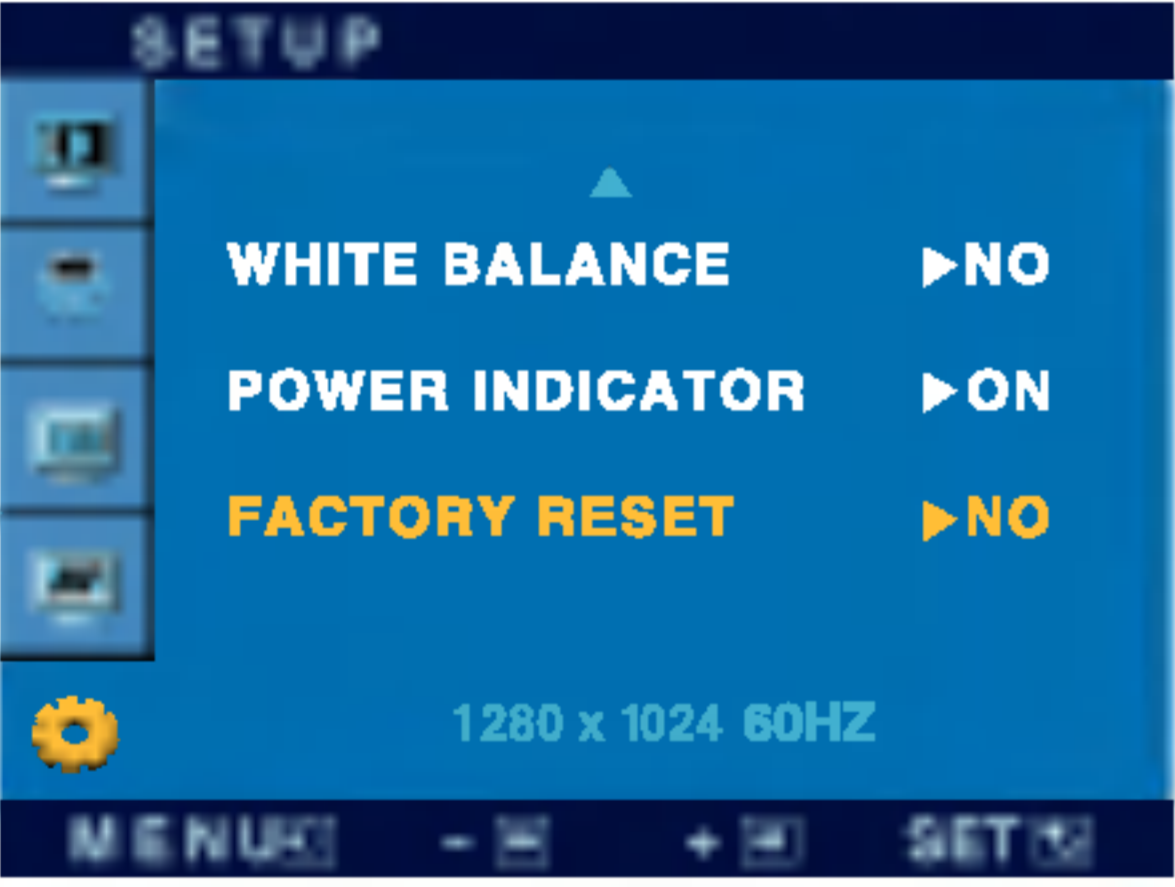
On Screen Display(OSD) Selection and Adjustment

| Main menu | Sub menu | Description |
|---|-------------------|---|
| PICTURE | | |
|  | BRIGHTNESS | To adjust the brightness of the screen. |
| | CONTRAST | To adjust the contrast of the screen. |
| | GAMMA | Set your own gamma value. : -50/0/50 On the monitor, high gamma values display whitish images and low gamma values display high contrast images. |
| <ul style="list-style-type: none">■ MENU : Exit■ - : Decrease■ + : Increase■ SET : Select another sub-menu | | |

| Main menu | Sub menu | Description |
|---|--|---|
| COLOR | | |
|  | PRESET | Select the screen color. <ul style="list-style-type: none">• 6500K: Slightly reddish white.• 9300K: Slightly bluish white. |
| |  RED | Set your own red color levels. |
| |  GREEN | Set your own green color levels. |
| |  BLUE | Set your own blue color levels. |
| <ul style="list-style-type: none">■ MENU : Exit■ - : Decrease■ + : Increase■ SET : Select another sub-menu | | |

| Main menu | Sub menu | Description |
|---|-------------------|-------------------------------|
| POSITION | | |
|  | HORIZONTAL | To move image left and right. |
| | VERTICAL | To move image up and down. |
| <ul style="list-style-type: none">■ MENU : Exit■ - : Decrease■ + : Increase■ SET : Select another sub-menu | | |

On Screen Display(OSD) Selection and Adjustment

| Main menu | Sub menu | Description |
|---|------------------------|--|
| TRACKING | | |
|  | CLOCK | To minimize any vertical bars or stripes visible on the screen background. The horizontal screen size will also change. |
| | PHASE | To adjust the focus of the display. This item allows you to remove any horizontal noise and clear or sharpen the image of characters. |
| <ul style="list-style-type: none">■ MENU : Exit■ - : Decrease■ + : Increase■ SET : Select another sub-menu | | |
| <hr/> | | |
| SETUP | | |
|  | LANGUAGE | To choose the language in which the control names are displayed. |
| | OSD POSITION | To adjust position of the OSD window on the screen. |
| | WHITE BALANCE | If the output of the video card is different the required specifications, the color level may deteriorate due to video signal distortion. Using this function, the signal level is adjusted to fit into the standard output level of the video card in order to provide the optimal image. Activate this function when white and black colors are present in the screen. |
|  | POWER INDICATOR | Use this function to set the power indicator on the front side of the monitor to ON or OFF . If you set OFF , it will go off. If you set ON at any time, the power indicator will automatically be turned on. |
| <ul style="list-style-type: none">■ MENU : Exit■ - : Adjust■ + : Adjust■ SET : Select another sub-menu | | |
| | FACTORY RESET | Restore all factory default settings except " LANGUAGE. " Press the ► button to reset immediately. |

If this does not improve the screen image, restore the factory default settings.
If necessary, perform the white balance function again. This function will be enabled only when the input signal is an analog signal.

Check the following before calling for service.

| No image appears | |
|---|--|
| <ul style="list-style-type: none">● Is the power cord of the display connected? | <ul style="list-style-type: none">• Check and see if the power cord is connected properly to the power outlet. |
| <ul style="list-style-type: none">● Is the power indicator light on? | <ul style="list-style-type: none">• Press the Power button. |
| <ul style="list-style-type: none">● Is the power on and the power indicator blue or green? | <ul style="list-style-type: none">• Adjust the brightness and the contrast. |
| <ul style="list-style-type: none">● Is the power indicator amber? | <ul style="list-style-type: none">• If the display is in power saving mode, try moving the mouse or pressing any key on the keyboard to bring up the screen.• Try to turn on the PC. |
| <ul style="list-style-type: none">● Do you see an "OUT OF RANGE" message on the screen? | <ul style="list-style-type: none">• This message appears when the signal from the PC (video card) is out of horizontal or vertical frequency range of the display. See the 'Specifications' section of this manual and configure your display again. |
| <ul style="list-style-type: none">● Do you see a "CHECK SIGNAL CABLE" message on the screen? | <ul style="list-style-type: none">• This message appears when the signal cable between your PC and your display is not connected. Check the signal cable and try again. |

| Do you see a "OSD LOCKED" message on the screen? | |
|---|--|
| <ul style="list-style-type: none">● Do you see "OSD LOCKED" when you push MENU button? | <ul style="list-style-type: none">• You can secure the current control settings, so that they cannot be inadvertently changed. You can unlock the OSD controls at any time by pushing the MENU button for 5 seconds: the message "OSD UNLOCKED" will appear. |

Have you installed the display driver?

● **Have you installed the display driver?**

- Be sure to install the display driver from the display driver CD (or diskette) that comes with your display. Or, you can also download the driver from our web site: <http://www.lge.com>.

● **Do you see an "Unrecognized monitor, Plug&Play (VESA DDC) monitor found" message?**

- Make sure to check if the video card supports Plug&Play function.

| | | |
|--|---|---|
| Display | 17 inches (43.2 cm) Flat Panel Active matrix-TFT LCD Anti-Glare coating 17 inches viewable 0.26 mm pixel pitch | |
| Sync Input | Horizontal Freq. | Analog:30 - 83kHz (Automatic) |
| | Vertical Freq. | 56 - 75Hz (Automatic) |
| | Input Form | Separate TTL, Positive/Negative SOG (Sync On Green) |
| Video Input | Signal Input | 15 pin D-Sub Connector |
| | Input Form | RGB Analog (0.7Vp-p/75ohm) |
| Resolution | Max | D-sub Analog:VESA 1280 x 1024@75Hz |
| | Recommend | VESA 1280 x 1024@60Hz |
| Plug&Play | DDC 2B | |
| Power Consumption | On Mode | : 35W |
| | Sleep Mode | ≤ 1W |
| | Off Mode | ≤ 1W |
| Dimensions & Weight (with tilt/ swivel stand) | Width | 36.80 cm / 14.49 inches |
| | Height | 38.92 cm / 15.31 inches |
| | Depth | 23.05 cm / 9.07 inches |
| | Net | 4.9 kg (10.80lbs) |
| Tilt/Swivel Range | Tilt | -5°~20° |
| | Swivel | 350° |
| Power Input | AC 100-240V~ 50/60Hz 1.0A | |
| Environmental Conditions | Operating Conditions | |
| | Temperature | 10°C to 35 °C |
| | Humidity | 10 % to 80 % non-Condensing |
| | Storage Conditions | |
| Temperature | -20°C to 60 °C | |
| Humidity | 5 % to 95 % non-Condensing | |
| Tilt/Swivel Stand | Attached(<input type="checkbox"/>), Detached (<input type="checkbox"/>) | |
| Signal cable | Attached(<input type="checkbox"/>), Detached (<input type="checkbox"/>) | |
| Power cord | Wall-outlet type or PC-outlet type | |

NOTE

- Information in this document is subject to change without notice.

| | | |
|--|---|--|
| Display | 19 inches (48.18 cm) Flat Panel Active matrix-TFT LCD Anti-Glare coating 19 inches viewable 0.294 mm pixel pitch | |
| Sync Input | Horizontal Freq. | Analog:30 - 83kHz (Automatic) |
| | Vertical Freq. | 56 - 75Hz (Automatic) |
| | Input Form | Separate TTL, Positive/Negative SOG (Sync On Green) |
| Video Input | Signal Input | 15 pin D-Sub Connector |
| | Input Form | RGB Analog (0.7Vp-p/75ohm) |
| Resolution | Max | D-sub Analog:VESA 1280 x 1024@75Hz |
| | Recommend | VESA 1280 x 1024@60Hz |
| Plug&Play | DDC 2B | |
| Power Consumption | On Mode | : 39W |
| | Sleep Mode | ≤ 1W |
| | Off Mode | ≤ 1W |
| Dimensions & Weight (with tilt/ swivel stand) | Width | 41.30 cm / 16.26 inches |
| | Height | 42.14 cm / 16.57 inches |
| | Depth | 23.05 cm / 9.07 inches |
| | Net | 5.7 kg (12.57lbs) |
| Tilt/Swivel Range | Tilt | -5°~20° |
| | Swivel | 350° |
| Power Input | AC 100-240V~ 50/60Hz 1.0A | |
| Environmental Conditions | Operating Conditions | |
| | Temperature | 10°C to 35 °C |
| | Humidity | 10 % to 80 % non-Condensing |
| | Storage Conditions | |
| | Temperature | -20°C to 60 °C |
| | Humidity | 5 % to 95 % non-Condensing |
| Tilt/Swivel Stand | Attached(), Detached (O) | |
| Signal cable | Attached(), Detached (O) | |
| Power cord | Wall-outlet type or PC-outlet type | |

NOTE

- Information in this document is subject to change without notice.

Preset Modes (Resolution)

| Display Modes (Resolution) | | | Horizontal Freq. (kHz) | Vertical Freq. (Hz) |
|----------------------------|------|-------------|------------------------|---------------------|
| 1 | VGA | 640 x 350 | 31.469 | 70 |
| 2 | VGA | 720 x 400 | 31.468 | 70 |
| 3 | VGA | 640 x 480 | 31.469 | 60 |
| 4 | VESA | 640 x 480 | 37.500 | 75 |
| 5 | VESA | 800 x 600 | 37.879 | 60 |
| 6 | VESA | 800 x 600 | 46.875 | 75 |
| 7 | MAC | 832 x 624 | 49.725 | 75 |
| 8 | VESA | 1024 x 768 | 48.363 | 60 |
| 9 | VESA | 1024 x 768 | 60.023 | 75 |
| 10 | MAC | 1152 x 870 | 68.681 | 75 |
| 11 | VESA | 1152 x 900 | 61.805 | 65 |
| 12 | VESA | 1280 x 1024 | 63.981 | 60 |
| 13 | VESA | 1280 x 1024 | 79.976 | 75 |

Indicator

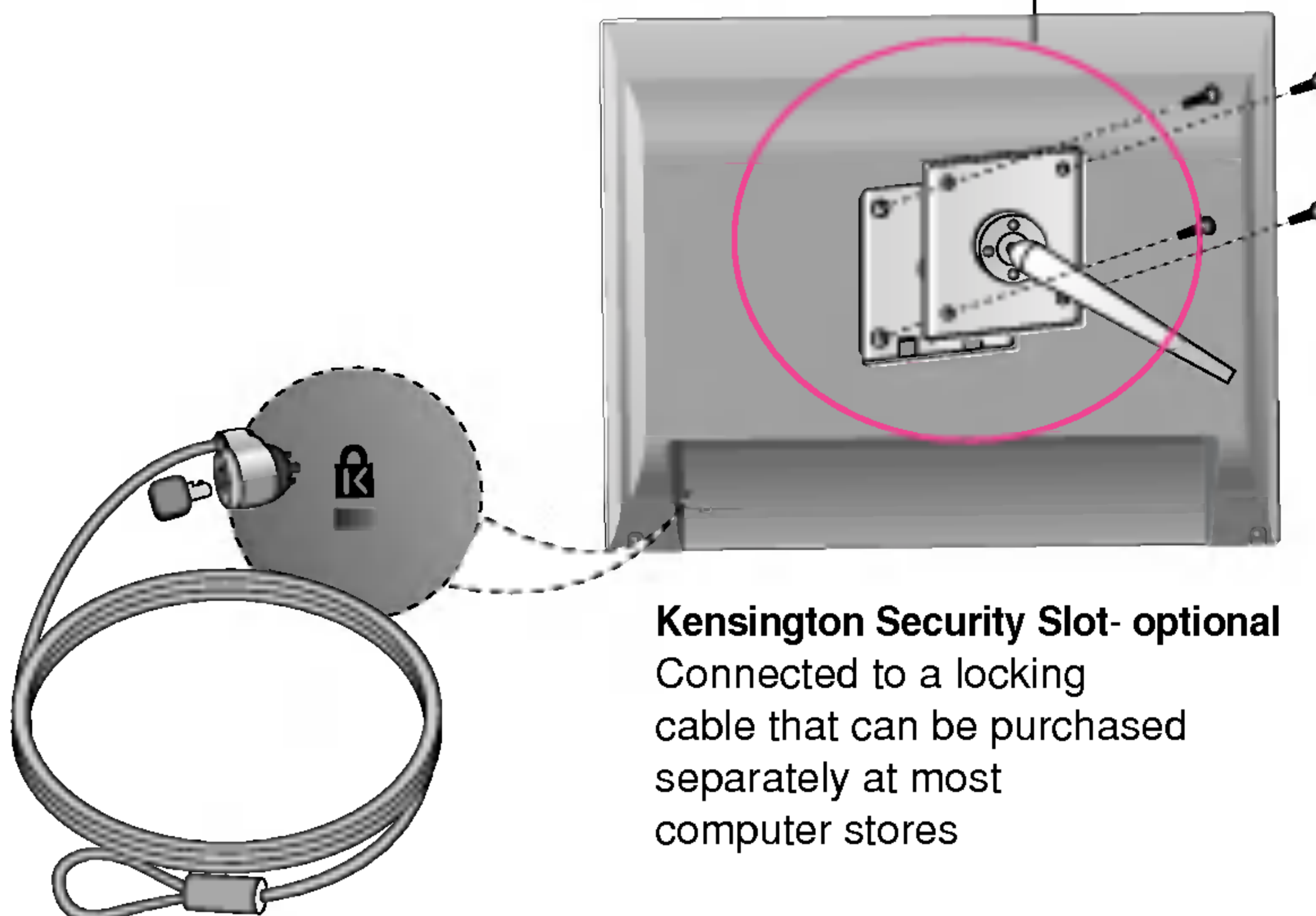
| MODE | LED Color |
|------------|-----------|
| On Mode | green |
| Sleep Mode | amber |
| Off Mode | Off |

How to Install the VESA Standard wall mounting

This monitor meets VESA-compliant mounting interface pad specifications.

VESA wall mounting

Connected to another object (stand type and wall-mounted type. This monitor accepts a VESA-compliant mounting interface pad.- **optional**)
For further information, refer to the VESA Wall Mounting Instruction Guide.



Kensington Security Slot- optional

Connected to a locking cable that can be purchased separately at most computer stores

