



PORTABLE MULTIMEDIA PLAYER OWNER'S MANUAL MODEL: FM30

**Before connecting, operating or adjusting this product,
please read this instruction booklet carefully and completely.**

**Designs and specifications are subject to change without
notice for improvement.**





Table of Contents

Features	5	Installing Win98SE MSC Device Driver	23
Important safety instructions	7	Installation of the music therapy feature	24
REGULATORY INFORMATION	9	Connecting to the PC	25
FCC WARNING	9	To use a portable media device - In the MTP	
CAUTION	9	mode	25
Regulatory Notices	12	To download files	25
Warning	12	When MP3 Player is connected to PC in MTP	
Caution	12	Mode	26
Industry Canada requirement	12	To use the removable disk -	
FCC COMPLIANCE STATEMENT	12	In the MSC mode	28
FCC Warning	13	To download files	28
Disposal of your old appliance	13	Replacing firmware	29
Package contents	14	To upgrade firmware	29
Using the neck strap	15	Installation and connection	30
Name of each component	16	To use the AC adapter	30
Top and front views	16	To Charge the battery	30
Right and left views	17	To connect the USB cable	31
Installing software	18	To disconnect the USB Cable	
Before installing the operating program	18	(In the MSC mode)	32
LG Media Center	19	Basic operation	33
LG Lyrics Center	20	To Turn on/off the power	33
		Lock feature	33

Table of Contents



Reset feature	33	To Play / Pause	40
Volume control	33	To play the next or previous video file	40
Home menu screen	34	Speed search of video files	40
Selecting features	34	Capture Screen	40
Playing music	35	EZ menu (See on page 54)	41
To play Music screen	35	View Playlist	41
To play the music file	35	View All List	41
Pause	36	View Photo File	42
To search the next or previous file	36	View the photo file	42
Speed search	36	View Play Lsist	43
To repeat	36	View All List	43
EZ menu (See on page 54)	36	EZ menu (See on page 54)	43
View Playlist	37	View Text	44
Playlist - My Playlist	37	View Text File	44
Playlist - PC Playlist	37	View Playlist	44
Library	38	View All List	45
Recorded file	38	EZ menu (See on page 54)	45
Playlist -		Recording	46
To add/delete file to/from the My Playlist	39	Voice recording	46
View All List	39	To Connect to the external device	47
Playing video	40	To Record through an external device	47
To play video	40		



Table of Contents

FM radio reception	49	Photo	59
FM broadcasting reception screen	49	Radio	59
To listen to the FM radio	49	Record	59
To search the FM radio stations	49	Text	60
To set FM radio channel	50	Battery	60
To toggle of channel/frequency mode	51	Time	60
To search Channel	51	General setting	61
To delete saved channel	52	USB	61
Set/Cancel Mute	52	Using the application program	62
To record FM radio broadcasting	53	LG Media Center	62
EZ menu (<i>See on page 54</i>)	53	LG Media Center - Firmware Updating	62
Using EZ menu	54	LG Lyrics Center	63
Selecting EZ feature	54	View the manual	63
Set/Move/Cancel Bookmark	55	Installation of the Adobe Acrobat Reader	63
Media selection	55	Troubleshooting	64
To select the media,	55	Product model	66
To set Radio Channel	56	http://www.lge.com.	67
Search Page	56	Supported file specification	68
Favorite songs	57		
Setting details	58		
Setup menu structure	58		
Music	58		

Features



Portable Data Storage

Easy storage and transfer of any file type.

USB 1.1 and 2.0

The user can download files at a fast speed.

Encoding function (Optional) [\(See on page 14\)](#)

Through Line-in port of the player, the user can encode and record music to the MP3 player format.

FM Reception (Optional) [\(See on page 14\)](#)

With auto frequency selection feature, the user can conveniently listen to FM radio broadcasting.

LG 3D sound

3D sound effects, low tones, and low frequency sound provide greater sound quality.

Text viewer

Convenient display of text files(.txt) for reading on the go.

Photo viewer

Store and display photos on the vivid display for entertaining slide shows.

Brilliant 1.77" Color OLED Screen

Photos and videos are reproduced in vivid detail on the highly portable 260,000 color Organic Light Emitting Diode (OLED) screen.

File Format Flexibility

Enjoy a wide variety of multi-media file formats, including:

Text: TXT

Audio: MP3, OGG, WMA, WAV (ADPCM), ASF

Photo: JPG, BMP

Video: LG AVI (To play only video files transcoded by the LG Media Center)

MTP / MSC Mode

What is the MTP mode? MTP stands for the Media Transfer Protocol. MTP applies the latest technology of Microsoft to support the multimedia devices.

What is the MSC mode? The MSC stands for the Mass Storage Class. The device in the MCS mode functions as if the portable memory.



Features

Auto EQ

Automatically adjusts for optimum sound quality based on the music genre of the song being played.

Easy Navigation and Menu System

Navigating menus is a snap with the colorful 3D graphics and index finger navigation bar.

Powerful Battery Performance

The rechargeable Li-Ion battery provides up to 60 hours of playback time (audio files).

See "[Basic operation](#)" and "[Troubleshooting](#)" for more information on maximizing battery performance and battery performance limitations.

Important safety instructions



Please follow the safety instructions closely to reduce the risk of accidents or damage to equipment.
Safety instructions are divided into Warning and Attention:
Keep this manual in an easily accessible place.



Caution

Not following the instruction may result in a light accident or damage.



Warning

Not following the instruction may result in death or serious injury.



Warning



Do not place an object on the product.



Keep this product away from heat.



Do not disassemble, repair, or remodel the product.



Keep your computing environment clean and free of dust.



Caution



Do not use this product while driving.



Do not drop an object or give shock on the product.



Clean the PC with soft cloth.



Do not operate the PC near water, dust, or soot.



Important safety instructions



Do not place the player near a magnet or within the magnetic field.



Note that the player may malfunction in an electrostatic environment.



Use the AC adapter shipped with the product for the safety purposes.



Do not insert a metallic object (coins or hair pins) or flammable objects in the product. Do not drop such objects on the product either.

Do not use the earphones loud while walking, especially on the crosswalks.

Stop using earphones or lower the volume when you have ringing in your ears.

Be careful that headphones or earphones do not slip into the subway doors or automatic doors.



Do not disconnect the USB cable. Do not turn off the player while the USB cable is connected. Otherwise, the data may get lost.



Back up important data (Note that the manufacturer is not responsible for the loss of major data caused by the user's mistake)



Disconnect the AC adapter and the cable in case of a lightning or thunder. Otherwise, an electric shock or fire may occur.

Listening to the music loud for a long time may compromise your hearing ability.

Do not use earphones while riding bicycles and motor cycles or driving a car.

Important safety instructions



REGULATORY INFORMATION

FCC Part 15

This product has been tested and found to comply with the limits for a Class B digital device, pursuant to Part 15 of the FCC Rules. These limits are designed to provide reasonable protection against harmful interference when the product is operated in a residential installation. This product generates, uses and can radiate radio frequency energy and, if not installed and used in accordance with the instruction manual, may cause harmful interference to radio communications.

However, there is no guarantee that interference will not occur in a particular installation. If this product does cause harmful interference to radio or television reception, which can be determined by turning the product off and on, the user is encouraged to try to correct the interference by one or more of the following measures:

- Reorient or relocate the receiving antenna.
- Increase the separation between the product and receiver.
- Connect the product into an outlet on a circuit different from that to which the receiver is connected.
- Consult the dealer or an experienced radio/TV technician for help.

FCC WARNING

This equipment may generate or use radio frequency energy. Changes or modifications to this equipment

may cause harmful interference unless the modifications are expressly approved in the instruction manual. The user could lose the authority to operate this equipment if an unauthorized change or modification is made.

CAUTION

PLEASE READ AND OBSERVE ALL WARNINGS AND INSTRUCTIONS IN THIS OWNER MANUAL AND THOSE MARKED ON THE UNIT. RETAIN THIS BOOKLET FOR FUTURE REFERENCE.

This set has been designed and manufactured to assure personal safety. Improper use can result in electric shock or fire hazard. The safeguards incorporated in this unit will protect you if you observe the following procedures for installation, use, and servicing. This unit does not contain any parts that can be repaired by the user.

DO NOT REMOVE THE CABINET COVER, OR YOU MAY BE EXPOSED TO DANGEROUS VOLTAGE. REFER SERVICING TO QUALIFIED SERVICE PERSONNEL ONLY.

1. Read these instructions.

- All these safety and operating instructions should be read before the product is operated.

2. Keep these instructions.

- The safety, operating and use instructions should be retained for future reference.



Important safety instructions

3. Heed all warnings.
 - All warnings on the product and in the operating instructions should be adhered to.
4. Follow all instructions.
 - All operating and use instructions should be followed.
5. Do not use this apparatus near water.
 - For example: near a bath tub, wash bowl, kitchen sink, laundry tub, in a wet basement; or near a swimming pool; and like.
6. Clean only with dry cloth.
 - Unplug this product from the wall outlet before cleaning. Do not use liquid cleaners.
7. Do not block any ventilation openings. Install in accordance with the manufacturer's instructions.
 - Slots and openings in the cabinet are provided for ventilation and to ensure reliable operation of the product and to protect it from overheating.
 - The openings should never be blocked by placing the product on a bed, sofa, rug or other similar surface. This product should not be placed in a built-in installation such as a bookcase or rack unless proper ventilation is provided or the manufacturer instructions have been adhered to.
 - Important Safety Instructions
8. Do not install near any heat sources such as radiators, heat registers, stoves, or other apparatus (including amplifiers) that produce heat.
9. Do not defeat the safety purpose of the polarized or grounding-type plug. A polarized plug has two blades with one wider than the other. A grounding type plug has two blades and a third grounding prong. The wide blade or the third prong are provided for your safety.
 - If the provided plug does not fit into your outlet, consult an electrician for replacement of the obsolete outlet.
10. Protect the power cord from being walked on or pinched particularly at plugs, convenience receptacles, and the point where they exit from the apparatus.
11. Only use attachments/accessories specified by the manufacturer.
12. Use only with the cart, stand, tripod, bracket, or table specified by the manufacturer, or sold with apparatus.
 - When a cart is used, use caution when moving the cart/apparatus combination to avoid injury from tipover.

Important safety instructions



13. Unplug this apparatus during lightning storms or when unused for long periods of time.



14. Refer all servicing to qualified service personnel.

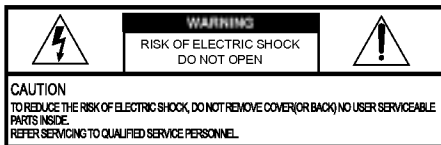
Servicing is required when the apparatus has been damaged in any way, such as power- supply cord or plug is damaged, liquid has been spilled or objects have fallen into the apparatus, the apparatus has been exposed to rain or moisture, does not operate normally, or has been dropped.



Regulatory Notices

Warning

- To reduce the risk of fire or electric shock, do not expose this appliance to rain or moisture.



Caution

- The appliance is not intended for use by young children or infirm persons without supervision.
- Young Children should be supervised to ensure that they do not play appliance.
- Use of controls or adjustments or performance of procedures other than those specified herein may

Industry Canada requirement

- This Class B digital apparatus complies with Canadian ICES-003.
- Cet appareil numérique de la classe B est conforme à la norme à NMB-003 du Canada.

FCC COMPLIANCE STATEMENT

Note: This equipment has been tested and found to comply with the limits for a Class B digital device, pursuant to Part 15 of FCC Rules. These limits are designed to provide reasonable protection against harmful interference in a residential installation. This equipment generates, uses, and can radiate radio frequency energy and, if not installed and used in accordance with the instructions, may cause harmful interference to radio communications. However, there is no guarantee that interference will not occur in a particular installation. If this equipment does cause harmful interference to radio or television reception, which can be determined by turning the equipment off and on, the user is encouraged to try to correct the interference by one or more of the following measures:

- Reorient or relocate the receiving antenna.
- Increase the separation between the equipment and receiver.
- Connect the equipment into an outlet on a circuit different from that to which the receiver is connected.
- Consult the dealer or an Authorized Service Center for help.

Regulatory Notices



FCC Warning

- Changes or modifications not expressly approved by the party responsible for compliance could void the user's authority to operate the equipment.
- This MP3 PLAYER is for use only with UL listed personal computers that have installation instructions detailing user installation of card cage accessory.



Tested to Comply
with FCC Standards

FOR HOME OR OFFICE USE

Disposal of your old appliance



1. When this crossed-out wheeled bin symbol is attached to a product it means the product is covered by the European Directive 2002/96/EC.

2. All electrical and electronic products should be disposed of separately from the municipal waste stream via designated collection facilities appointed by the government or the local authorities.
3. The correct disposal of your old appliance will help prevent potential negative consequences for the environment and human health.
4. For more detailed information about disposal of your old appliance, please contact your city office, waste disposal service or the shop where you purchased the product.
 - The lithium battery contains lithium and can explode if it is not properly handled or disposed of.
 - Replace only with a battery of the type recommended by LG.
 - Caution: Danger of explosion if battery is incorrectly replaced. Replace only with the same or equivalent type recommended by LG. Dispose of used batteries according to the manufacturer's instructions.





Package contents



FM30 Portable Digital Player



Portable neck strap



USB cable



AC adapter



Software CD



Earphones



Quick Setup Guide



Line-in cable

* Options

- Contents of the product are subject to change without prior notice for functional improvement.
- FM Radio reception (recording), voice recording, and recording from external devices (Line-in) are optional.

Options By Model

Model Names	FM	Voice Recording	Line-in
MF-FM30S	O	O	O
MF-FM30E	X	O	O
MF-FM30X	X	X	X

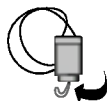
Package contents



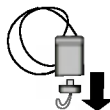
Using the neck strap

The supplied neck strap provides a convenient way to carry your Portable Digital Player.

1. Rotate the bottom part of neck strap in the direction of arrow.



2. Separate the bottom part of neck strap as shown on the picture.



3. Connect the strap to the neck strap holder in the player.



Name of each component

Top and front views

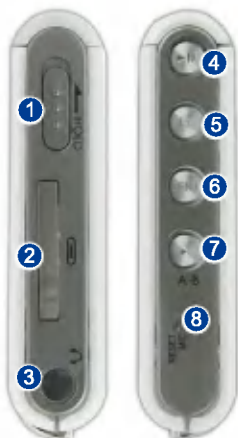


1. Display
2. Portable neck strap holder
3. Search / REW (⏮) / Backward button
 - Music mode: Previous Title / Search
 - Radio mode(Optional): Decrease frequency
 - Text mode: Previous Page
 - Video mode: Search / Previous File
 - Photo mode: Previous Photo
 - Setting mode: Exiting the menu
4. Navigation Bar
 - Move up/down to control volume
 - Move up/down to navigate menus
 - Press to make menu selections
5. Search / FF (⏭) / Forward button
 - Music mode: Next Title / Search
 - Radio mode(Optional): Increase frequency
 - Text mode: Next page
 - Video mode: Next File / Search
 - Photo mode: Next photo
 - Setup mode: Select the corresponding menu.

Name of each component



Right and left views



1. Hold
 - Slide to the HOLD position to prevent other buttons from working.
 - This is helpful when you want to make sure the player doesn't accidentally power on when it is stored.
2. Line-in/USB ports
 - Power connection
3. Earphones port
4. Play / Pause button (Power on/off)
5. EZ button
6. Menu button
 - Press once to access the main menu
 - When the Music, Photo, Video or Text menu icons are highlighted, PRESS AND HOLD to view the files available in each folder.
7. Record button / A-B Repeat
8. M I C hole(Optional) / Reset hole(Optional)



Installing software

Before installing the operating program

Check the specifications of your PC before using LG portable Flash MP3 Player.

Minimum system requirements

- CD ROM Drive
- Pentium 3 or higher level CPU / 128MB or larger memory
- 100MB or larger hard disk space, 800 X 600 mode
- Hi-color (16 bit) or higher level vide card, Sound card

Operating environment

- The MTP mode is applied to the PC equipped with Windows XP/SP1 or higher-version OS or the Windows Media Player 10. To the lower-version OS, the MSC mode is applied.

Windows Media Player 10

- The user can download the file using Synchronize with Windows Media Player 10 menu.
- For more information, see the Help menu of Windows Media Player 10.
- Download the JANUS DRM-applied files through the Windows Media Player 10 or LG Media Center (MTP Mode only)
- Download X-Sync DRM-applied files through the LG Media Center.

- Download the music files purchased at the LG Media Cast or a music store through the LG Media Center.

LG Media Center

- Windows 2000/XP
- Windows Media Player 9 or higher / Internet Explorer 6.0 or higher
- Windows Media Player or Internet Explorer will be automatically installed during installation of the LG Media Center. Internet connection must be connected in order to install Internet Explorer.
- The MTP mode is recommended for the LG Media Center.

LG Lyrics Center

- Windows 98SE/ME/2000/XP (MSC Mode only)

Music therapy

- Windows 98SE/ME/2000/XP, Windows Media Player 9 or higher

Installing software



LG Media Center

1. Insert the operation program CD into the CD ROM.
2. Select the LG Media Center.



- Refer to [page 62](#) and [page 63](#) for more information.

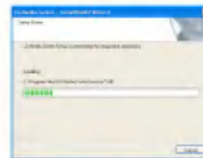
3. Follow the displayed instructions.
4. Read the License Agreement. Select the checkbox, and click on [Next] button.
5. Select the installation path, and click on [Next] button.



6. Click on [Install] button to start installation.



7. During installation of the LG Media Center, the user can install the Windows Media Player and the Internet Explorer for the operating environment.





Installing software

8. After finishing the installation, click on [Finish] button.



9. Click on Start > All Programs > LG Media Center to start the program.

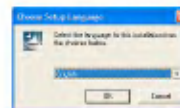
LG Lyrics Center

1. Insert the operation program CD into the CD ROM.
2. Select the LG Lyrics Center.

3. Follow the displayed instructions.



4. Select the language, and click on [OK] button.



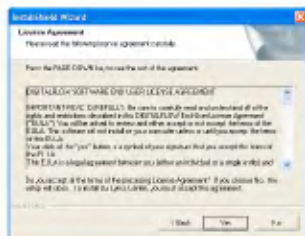
Installing software



5. Click on [Next] button.



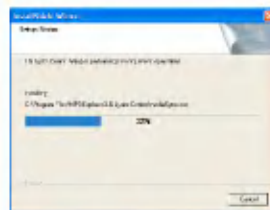
6. Read the License Agreement, and select the checkbox.



7. Select the installation path, and click on [Next] button.



8. Program installation will start.



9. Click on [Yes] button.





Installing software

10. Windows media format installation screen will appear. Click on [Yes] button.



11. Click on [OK] button to finish installation of the program.



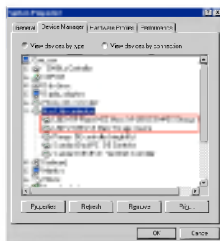
12. Click on Start > All programs > LG Lyrics Center to start the program.

Installing software



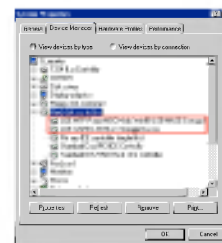
Installing Win98SE MSC Device Driver

1. Insert the CD into the drive, and select the LG Lyrics Center. Then, Windows 98SE MSC driver will be installed.
2. Reboot the PC, and connect the MP3 player to the USB port.
3. The installed device driver can be used as a portable disk in the Windows Explorer.
4. Check the installation status in System Properties as shown below.



Manual installation

1. Execute LGE203053 inst.bat under Drivers > Win98SE folder in the CD-ROM.
2. Reboot the PC, and connect the MP3 player to the USB port.
3. The installed device driver can be used as a portable disk in the Windows Explorer.
4. Check the installation status in System Properties as shown below.





Installing software

Installation of the music therapy feature

1. Insert the operation program CD into the CD ROM.
2. Select Music Therapy.
3. After the program is installed, a shortcut icon will be created under Start > All Programs > Music Therapy.
4. Connect the MP3 player to the USB port of the PC.
5. Click on the shortcut icon after connecting the player.

6. Select the device, and click on Download button. Then, the therapy music file will be downloaded to the MP3 player.



- Music Therapy files will refresh the user.

Connecting to the PC



To use a portable media device - In the MTP mode

The manufacturer is not responsible for the data loss caused by the user's mistake.

What is the MTP mode?

The MTP stands for the Media Transfer Protocol. It applies the latest technology defined by Microsoft to support multimedia devices (In the MTP mode, the player will be recognized as a mobile device, not a mass storage, and will interwork with the Windows Media Player 10)

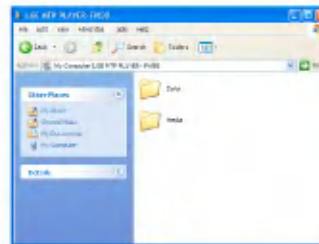
• MTP mode

- Windows XP / SP1 or higher OS, and Windows Media Player 10
- To use the MSC mode, select the MSC mode in the USB Mode menu.
- If the Windows OS does not support the MTP, the player will function in the MSC mode although the player is set in the MTP mode (Select the MSC mode for the USB in the setup menu for Windows 98 SE/ME)

To download files

1. Select the MTP mode from the USB mode of the MP3 player.
 - The default is the MTP mode.

2. Connect one end of the USB cable to the USB port of the PC and the other to the USB port of the player.
 - Check whether both ends of the cable are correctly plugged in.
3. Check whether a new drive has been added in the Windows Explorer in the PC.
 - The drive name may differ depending on the OS.
 - ASF Files can only be downloaded by Windows Media Player 10 or MSC Mode.
4. Select the file to store, and copy it to the folder of the portable media device.



- Disconnecting the USB cable while the file is being copied may cause malfunctioning of the player.
- The player will be charged when connected to the PC through the USB cable.

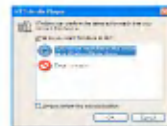


Connecting to the PC

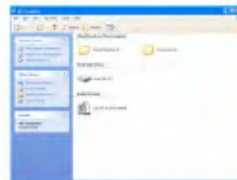
- Copy music files (MP3, WMA, ASF, and WAV) to the media folder (Convenient synchronization is possible through the LG Media Center or Windows Media Player 10)
- Download video, photo (JPEG, BMP) and text (TXT) files through the LG Media Center.
- The player will play only files downloaded from LG Media Center. (Purchased video, photo (JPEG, BMP), and text (TXT) files)
- The data folder is supported only for the portable device, and is not displayed on the MP3 player.
- After the file is copied, the folders will be created in order of artist (or intellectual property right holder) and the album title contained in ID3TAG information of the music file. In the player, select Browser > Entire List > Contents to view the playing list. In the MSC mode, the playing list is not supported.
- ASF Files can only be downloaded by Windows Media Player 10 or MSC Mode.
- OGG Files can only be downloaded by MSC Mode.

When MP3 Player is connected to PC in MTP Mode.

1. When MP3 Player is connected to PC.



2. When My Computer is clicked on and [Take no action] is selected.



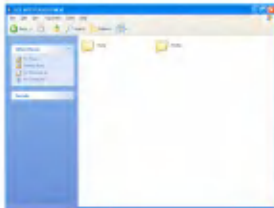
3. When Audio Device is selected.

- Data folder: Downloads/Uploads all data files (However, media file cannot be played)

Connecting to the PC

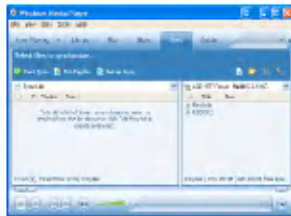


- Media folder: User can download only the file that Windows Media Player 10 supports.



4. Upon manual setup

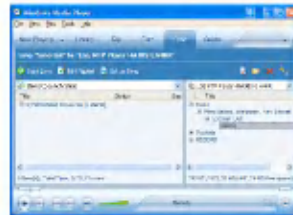
- When [Synchronize Media File with Device] has been selected or the Windows Media Play 10 is opened (The data cannot be uploaded to the PC from the Windows Media Player 10)



5. When the files to be synchronized are dragged to the left window



6. When files are synchronized and a new folder is created.





Connecting to the PC

To use the removable disk - In the MSC mode

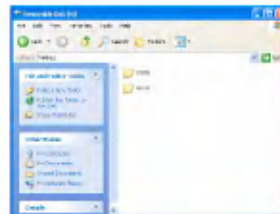
What is the MSC mode?

The MSC stands for the Mass Storage Class. The device in the MCS mode functions as if the portable memory.

To download files

1. Select the MSC mode from the USB Mode menu in the MP3 player.
 - For more information, see the setup menu tree screen ([See on page 58](#))
2. Connect one end of the USB cable to the USB port of the PC and the other to the USB port of the player.
 - Check whether both ends of the cable are correctly plugged in.
3. Check whether a new drive has been added in the Windows Explorer in the PC.
 - The drive name may differ depending on the OS.

4. Drag the file to copy to the removable disk drive.



- Disconnecting the USB cable while the file is being copied may cause malfunctioning of the player.
- The player will be charged when connected to the PC through the USB cable.
- It is recommended to download video files from LG Media Center.

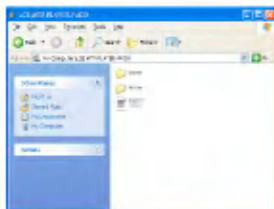
Replacing firmware




To upgrade firmware

The user can update the firmware for addition and change of features of the player and for functional improvement.

1. Check the model number at the company website, and download the latest version.
 - <http://www.lge.com> > Support > Download > Software
2. Decompress the downloaded files. Then, player.rom file will be displayed.
3. Connect the USB cable to the MP3 player and the PC.
4. Check whether a new drive has been added in the Windows Explorer in the PC.
 - The drive name may differ depending on the OS.
5. Select player.rom file and copy it to the newly added drive.



- In the MSC mode: Highest root
- In the MTP mode: Data folder

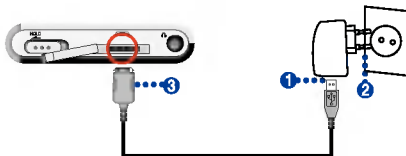
6. To safely remove the device, remove the USB cable.
7. When "Firmware upgrade?" message is displayed, click on  button.
8. The firmware updating progress bar will be displayed. After completion, the power will be automatically turned off.
 - Wait till the power is automatically turned off.
9. Turn on the MP3 player, and check the updated version of firmware. ([See on page 61](#)).



Installation and connection

To use the AC adapter

1. Connect the USB cable to the USB port of the AC adapter.
2. Connect the power cable to the AC adapter.
3. Connect the USB cable to the USB port of the player.






To Charge the battery

This player will be automatically charged when connected to an external power source.

- Charging time: Three hours (adapter)
- Playback time: Maximum 52 hours (for 128Kbps/44.1KHz EQ normal)
- Maximum 12 hours (for video files)
- About 7 hours (Viewing Photos while playing music)

- On the display of the player, the charging status will be displayed as follows:



- After charging is completed,  will appear.
- The user can charge the player while it is functioning (The charging status is displayed through the battery icon)
- When the player is connected to the PC through the USB cable, the charging status will not be displayed.
- Connecting the AD adapter to the player that is currently playing music, the player will be turned off and will enter into Home menu.
- Do not disconnect AC Adapter while the player is starting up. The data may get lost.
- Battery may be fully discharged first time you purchase the product. Charge the battery first.
- **Charging after returning to the playing position**
 - Press  button for two seconds or longer to turn off the player. Then, connect the AC adapter.
 - Press  button for 2 seconds to turn on the power.

Installation and connection

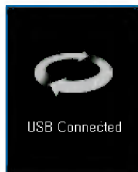


To connect the USB cable

1. Connect one end of the USB cable to the USB port of the PC and the other to the USB port of the player.
 - Check whether both ends are correctly plugged in.



2. If the USB device is normally recognized after the cable is connected, the following will be displayed:




3. In case of a correct connection, the icon will be displayed on the taskbar of the PC.
 - The icon shapes on the task bar may differ depending on the OS of the PC.



Installation and connection

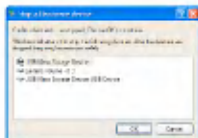
To disconnect the USB Cable (In the MSC mode)

This feature is to safely remove the player from the PC after uploading or downloading the files.

- Disconnect from the PC upon the connection in the MTP mode.
1. Double-click on Remove Hardware  icon on the taskbar of the PC.
 2. Click on [Stop] button when the window appears.





3. Click on [OK] button.



Basic operation



To Turn on/off the power





Press  button for 2 seconds or longer to turn on the player, and press  button again to turn off the player.

- Downloading files in the MSC mode may take time for rebuilding depending on the number of files.



Lock feature

This feature is to lock all feature buttons to prevent malfunctioning of the player.


1. Press  switch in arrow directions to lock the player.
 - Upon locked status,  will be displayed on the LCD. Upon pressing of each button,  will appear for two seconds and disappear.
2. Press  switch to the opposite direction of the arrow key and unlock the device.

Reset feature


This feature is to reset the player when it does not function any more.

1. Press the reset hole at the lower part of the player using a sharp object.



2. After the power is turned off, press  button for two seconds or longer. Then, the power will be turned on.
 - When the player is connected to the AC adapter, it will be automatically turned on.
 - Reset function initializes setting values.

Volume control

Adjust  button in + or - direction to control the volume.

- The volume level can be adjusted by 41 steps. (Min, 1~39, Max)
- Pressing the button for two seconds or longer will increase or decrease the volume by two levels.
- The default volume is 20.
- To protection hearing, the maximum volume is set as 25 when the user turns on the player.



Basic operation

Home menu screen

There are seven different functions on the start menu. Select the field.






* Home menu screen varies according to product models ([See on page 14](#))



1. Music: Plays the music files.
2. Video: Plays the video files.
3. Photo: Plays the image files.
4. Radio: Receives and records FM broadcasting. (Optional according to model)
5. Record: Supporting Line-in/Voice Recording. (Optional according to model)
6. Text: Plays the text file.

7. Setup: Sets the operating environment of the player.

Selecting features

1. Press  button shortly to start the Home menu.
 - Home menu appears if  button is pressed shortly in Play or Stop mode.
2. Adjust  button in + or - direction to control the volume.
3. Press  or  button to display the selected menu.

Playing music



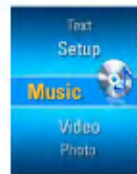
To play Music screen



1. Display (visualized sound effects)
2. Song information display / Lyrics display (when the lyrics file is available and the lyrics display feature is enabled)
3. Playing time bar
4. Playback time
5. Current time
6. Battery status
7. A-B Repeat display

To play the music file

1. Move to the Home menu, and adjust button in + or - directions to select [Music] mode.





2. Press or button to enter.
3. Press button shortly to start the Home menu.








Playing music


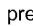
Pause

1. To pause, press  button once.
2. Press  button again to resume playing.



To search the next or previous file





1. Press  or  button shortly to go to the previous or next song.
2. Press  button five seconds after playing starts. Then, the current song will be played from the beginning.

Speed search

1. To search the previous or the next title fast, press  or  button for two seconds or longer during playing.
 - It skips to the next or previous file from the beginning or the end of the song.

To repeat

1. To set the starting point during playing, press Repeat  button shortly.
 -  icon will appear on the display.

2. To select the ending point, shortly press Repeat  button again. Then, the Repeat feature will be set.
 -  icon will appear on the display.
3. To cancel Repeat feature, press  button again.
 -  icon will disappear.


EZ menu *(See on page 54)*

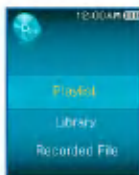
With this	You can do...
Bookmark	The user can set Set / Cancel / Move Bookmark features.
Media	The user can view the photo or text file during playing music.
Play mode	The user can select Repeat one, Play All, Repeat All, Random Play, or Random Repeat All.
Brightness	The user can adjust the brightness in 10 levels from 0 to 9.
EQ	AUTO EQ, NORMAL, POP, ROCK, R&B/ SOUL, HIP HOP/RAP, JAZZ, CLASSICAL, DANCE, Live, User EQ
3D Sound	Off, 3D EXPANDER, STARDIUM, CONCERT HALL, CLUB, ROOM, Bass Boost, and X-LIVE 3D sound effect features are provided.
Information	Song information display




Playing music



View Playlist


1. Press  button for two seconds or longer while the player is playing the music or paused.










2. Adjust  button in + or - direction to select the item.
3. Press  or  button to display the selected item.

Playlist - My Playlist

Enables the user can select and manage his/her play list.


1. Press  button for two seconds or longer while the player is playing the music or paused.

2. Select Playlist > My Playlist by pressing  or  button.
3. Adjust  button in + or - direction to select the song.
4. Press ,  or  button to play.
 - Select Play Folder to lay all titles in the folder.
 - Depending on the setting of the playing mode, the number of played song or the playing order may differ.
5. Press  button for two seconds or longer to enter into the playlist again.

Playlist - PC Playlist

Enables the MP3 player to automatically play the play list created in the WMP 10 (Windows Media Player 10) or the LG Media Center through the Auto Sync mode.

- When the play list and corresponding files are unchecked in the Auto Sync mode, songs will be deleted in the MP3 player. It is recommended to keep All Music field always checked.


1. Press  button for two seconds or longer while the player is playing the music or paused.



Playing music





2. Select Playlist > My Playlist by pressing  or  button.
3. Adjust  button in + or - direction to select the song.
4. Press ,  or  button to play.

Library

1. Press  button for two seconds or longer while the player is playing the music or paused.
2. Select [Library] in the view Playlist menu.
 - Genre: Classifies and plays songs by genre.
 - Artist: Plays the song by artist.
 - Album: Plays songs by album.
 - Year: Plays songs by year.
 - All Songs: Plays all songs.
 - New music: Plays newly added songs every day, week, or month.

Recorded file





* Optional according to model. [\(See on page 14\)](#)

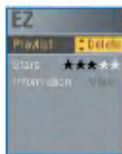
1. Press  button for two seconds or longer while the player is playing the music or paused.
2. Select [Recorded File] in the view Playlist menu.
3. Press ,  or  button to play.
 - F051019_0001: Recorded file from radio (F /year/ month/ date in order)
 - V051019_0001: Voice record file (V /year/ month/ date in order)
 - L051019_0001: Recorded file from other devices (L /year/ month/ date in order)


Playing music




Playlist - To add/delete file to/from the My Playlist

1. Press  button for two seconds or longer while the player is playing the music or paused.
2. Go to [Library] from the View Playlist menu, and select the file to add.
3. Select the file, and press  button shortly.
4. Select [Add] in the play list, and press  or  button to add the file to the play list.







-  icon will appear on the display.
 - Only one song at a time.
5. To delete a song from the play list, click on [Delete].

View All List

1. Press  button for two seconds or longer while the player is playing the music or paused.
 - The entire list of MP3 files will appear.




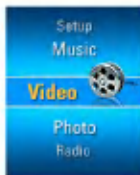
2. Adjust  button in + or - direction to select the file.
3. Press ,  or  button to play.



Playing video



To play video

1. Move to the Home menu, and adjust  button in + or - directions to select [Video] mode.






2. Press  or  button to play the video.
 - Video clips are played in "Repeat Folder" mode by default.



To Play / Pause

1. To pause, press  button once.
2. Press  button again to resume playing.
 - The video file will be displayed on the horizontal screen.


To play the next or previous video file

1. Press  or  button shortly to select the previous or next file.
 - Moving to the previous/next file and playing it.
 - Press  button five seconds after playing starts. Then, the current video file will be played from the beginning.

Speed search of video files

1. Press  or  button for two seconds or longer to fast search the video files.
 - The file will start playing as soon as the user stops pressing the button.
 - The next video file, not the previous video file, will be played.

Capture Screen

1. After pausing playing of the video file, shortly press  button to store the image on the display.
2. Check the stored screen in Photo menu.
 - A file named P051127_0001(date_order) will be created.


Playing video

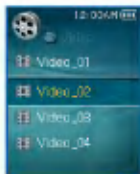



EZ menu [\(See on page 54\)](#)




With this	You can do...
Bookmark	The user can set Set / Cancel / Move Bookmark features.
Brightness	The user can adjust the brightness in 10 levels from 0 to 9.
Information	Video file information display

View Playlist






1. Press  button for two seconds or longer while the player is playing/stopping the file. Then, the play list will appear.



2. Adjust  button in + or - direction to select the video file.

3. Press , , or  button shortly to play the video file.


View All List

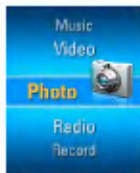
1. Press  button for two seconds or longer while the player is playing the video file or pausing.
 - The entire list of MP3 files will appear
2. Adjust  button in + or - direction to select the file.
3. Press ,  or  button to play.




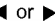



View Photo File

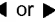
View the photo file

1. Move to the Home menu, and adjust  button in + or - directions to select [Photo] mode.




2. Press  or  button to play the photo.
3. Press  or  button shortly to select the previous or next photo file.
 - To move between the full view and four-division view, press  button.

Four-division view

1. To go to the four-division view from the full view, press  button.
2. Press  or  button shortly to select the previous or next photo file.
3. To go to the full view, press  button.

- Large-sized photos may not be opened.
- In case of BMP file, only 24-bit colors will be supported (Only the BMP files downloaded in the MSC mode are supported)
- In case of the JPG file downloaded from the LG Media Center, all photos can be viewed regardless of the size. It is recommended to download JPG files from the LG Media Center for quicker display.


Enable/Disable slide show

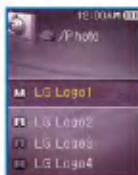
1. Enable the slide show at the EZ menu.
 - The slide show will be made based on the predefined slide interval.
 - Press  button to pause or resume the slide show.
2. Disable the slide show at the EZ menu.
 - Stop the slide show.





View Photo File








View Play Lsist

1. Press  button for two seconds or longer while viewing the photos. Then, the list of photos will appear.



2. Adjust  button in + or - direction to select the photo file.
3. Select the photo, and press , , or  button shortly. Then, the photo file will be displayed.
 - It may take time to load a large-sized photo file.

View All List

1. Press  button for two seconds or longer while viewing the photos.
 - The entire list of MP3 files will appear.
2. Adjust  button in + or - direction to select the file.
3. Press , , or  button to play.

EZ menu [\(See on page 54\)](#)


With this	You can do...
Media	The user can listen to the music or radio while viewing the photo file.
Slide Show	The user can On/Off the slide show display.
Slide interval	The user can set the slide show interval - 2 sec, 3 sec, 4 sec, or 5 sec.
Display	The user can set the screen lay out - full or four-division.
Brightness	The user can adjust the brightness in 10 levels from 0 to 9.
Information	Photo file information display

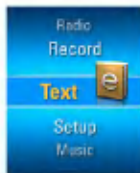
* **Under Media menu, radio is an optional feature.**
[\(See on page 14\)](#)





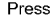

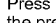



View Text


View Text File

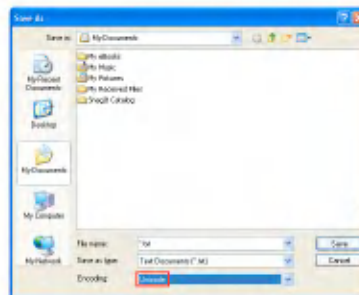
1. Move to the Home menu, and adjust  button in + or - directions to select [Text] mode.



2. To open the text file, press  or  button.
3. Press  or  button shortly to select the previous or next page.
 - Press  or  shortly to go to the previous/next page.
 - Press  or  for two seconds or longer. Then, the previous/next document will be opened.
 - The player supports maximum 99999 pages.
 - If the user selects the automatic page moving at the EZ menu, the page will be automatically moved at every interval defined.

View Playlist

1. Press  button for two seconds or longer while viewing the text.
 - In case the language code is not correct, the characters of the text file may be displayed broken or may not be displayed.
 - You should convert the text file into Unicode on a PC which supports your language of choice and download it








- It may take time to load a large-sized text file.

View Text



View All List

1. Press  button for two seconds or longer while viewing the text.
 - The entire list of MP3 files will appear.
2. Adjust  button in + or - direction to select the file.
3. Press ,  or  button to play.

EZ menu [\(See on page 54\)](#)

With this	You can do...
Bookmark	The user can set Set / Cancel / Move Bookmark features.
Media	The user can play the music or the radio while viewing the text.
Auto Page	In 1 sec, 3 sec, 5 sec, 10 sec, or defined time, the page will be automatically moved.
Page Find	Moving to the page search mode.
Brightness	The user can adjust the brightness in 10 levels from 0 to 9.
Information	Text file information display


*** Under Media menu, radio is an optional feature.**
[\(See on page 14\)](#)

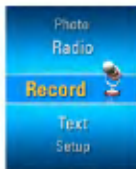


Recording

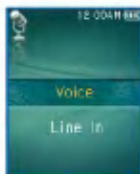
Voice recording

* Optional according to model. ([See on page 14](#))

1. Move to the Home menu, and adjust  button in + or - directions to select [Record] mode.

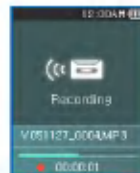


2. Press  or  button to open the recording screen.

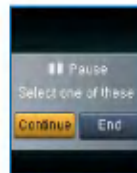




3. Press  or  button in the voice recording status to open the recording standby screen.

4.  Press this button to start recording.



5. To pause recording, stop  button.




6. Press  or  button to stop, and press  or  button.

- Select Continue to resume recording.
- The recorded files will be stored under Record folder named V0510190001_001 (YearMonthDate_Order)

Recording

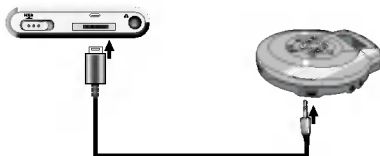


7. To stop recording, press  button.
 - Files less than one second long will not be stored.
8. Refer to [“Recorded file” on page 38](#) and [“View All List” on page 39](#) to play prerecorded files.


To Connect to the external device

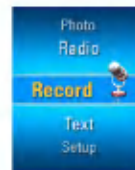
* Optional according to model. ([See on page 14](#))

1. Connect the Line-in cable to the line-out port of the external device and to the line-in port of the MP3 player.

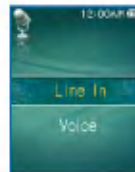


To Record through an external device

1. Move to the Home menu, and adjust  button in + or - directions to select [Record] mode.





2. Press  or  button to open the recording mode setup screen.

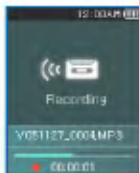




Recording

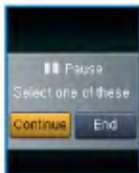
3. Select external input, and press  or  button. Then, the recording standby screen will appear.

4.  Press this button to start recording.



- Refer to [“Recorded file” on page 38](#) and [“View All List” on page 39](#) to play prerecorded files.

5. To pause recording, stop  button.



6. Press  or  button to continue or stop, and press  or  button.

- Select Continue to resume recording.

- The recorded files will be stored under Record folder named L051127_0004.MP3 (YearMonthDate_Order)

7. To stop recording, press  button.

- Files less than one second long will not be stored.
- Recording time by its quality.

Recording quality	Recording time (for 512MByte)
96 Kbps	About 11 hours and 30 minutes
128 Kbps	About 8 hours and 30 minutes
192Kbps	About 5 hours and 30 minutes

8. Refer to [“Recorded file” on page 38](#) and [“View All List” on page 39](#) to play prerecorded files.

FM radio reception



FM broadcasting reception screen

* Optional according to model. ([See on page 14](#))



1. Current channel / FM radio frequency display
2. FM radio frequency display
3. Mute display
4. Current time
5. Battery status
6. Mono/Stereo display
7. Channel no. (Channel mode)

To listen to the FM radio

1. Move to the Home menu, and adjust the button in + or - directions to select [Radio] mode.



2. Press or button shortly to open the reception screen.

To search the FM radio stations

Manual Search

1. In Tuner Mode: Press or button shortly to gradually increase/decrease the frequency.

Automatic search

1. In Tuner Mode: Press and buttons for two seconds or longer to automatically search the stations.
 - Press any button to stop automatic search.






FM radio reception






2. When the frequency is searched, the channel will be fixed and the corresponding frequency will be automatically received.
 - Reception may be weak in some areas.
 - As earphones function as antennas, only LG Electronics' earphones guarantees the reception quality.

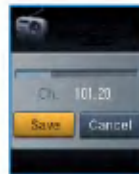
To set FM radio channel

Manual channel setting

1. Press  button for two seconds or longer while listening to the radio.
 - In case there is a channel saved, the channel list will be displayed.
 - In case there is a saved channel, the user can manually set the channel through EZ menu.
2. Select [Manual] in the channel setup, and press  or  button.




3. Adjust  button in + or - direction to control the frequency.
4. Press  or  button to select Save. Then, press  button to save the channel.
 - By adjusting  button up and down, the user can change the frequency and save maximum 20 channels.
 - The user can delete the channel using EZ menu.




5. Select Cancel to end manual channel setup.

Automatic Channel Setting

1. Press  button for two seconds or longer while listening to the radio.
 - In case there is a channel saved, the channel list will be displayed.
 - In case there is a saved channel, the user can automatically set the channel through EZ menu.


FM radio reception




2. To automatically search and save the channel, adjust  button in + or - directions and select [Auto].

- The user can save maximum 20 channels and existing channels will be deleted.
- In an area with weak reception, the detected channels may be less than 20.

To toggle of channel/frequency mode


1. Press  button for two seconds or longer to go to Channel menu.
- [Channel] screen will appear.





- If there is no channel saved, the player will not enter into the channel mode.
2. Press  button for two seconds or longer to enter into the frequency mode.

To search Channel


Manual Search

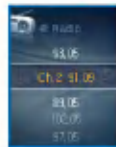
1. Press  button for two seconds or longer to enter into the channel mode while listening to the radio.

 - If there is no channel saved, the player will not enter into the channel mode.

2. Press  or  button shortly to go to the saved channel.

Search by Channel List

1. Press  button for two seconds or longer while listening to the radio.



2. The list of the saved channels will appear.



 - In case there is a channel saved, the channel list will be displayed.
 - In case there is no channel saved, the automatic/manual channel setup window will appear. ([See on page 50](#)).





FM radio reception

To delete saved channel


Delete in Channel Mode


1. Press  button for two seconds or longer to enter into the channel mode.
 - If there is no channel saved, the player will not enter into the channel mode.
2. Press  button shortly, and select Delete from EZ menu.
 - Only the received channels are deleted.


Delete from Channel List


1. Press  button for two seconds or longer to open the channel list.
 - If there is no channel saved, the player will not enter into the channel list.
2. Press  button shortly, and select Delete from EZ menu.
 - Only the received channels will be deleted.

Set/Cancel Mute

1. Press  button while listening to the radio. Then, the sound will become mute.

-  icon will appear and the sound will become mute.

2. Press  button to return to the normal.

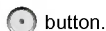
-  icon will disappear.

FM radio reception

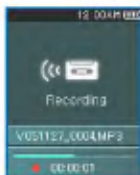








To record FM radio broadcasting

1. To record while listening to the radio, press



- The recording time will be displayed and the recording will start.



2. Press  button to pause.
3. Press  or  button shortly to select Continue or Finish. Then, press  or  button.
 - If the user select Continue, recording will be resumed.
 - The recorded files will be saved under Record folder named F051127_0004.MP3 (YearMonthDate_Order)
4. To stop recording, press  button.
 - Files less than one second long will not be saved.

5. Refer to [“Recorded file” on page 38](#) and [“View All List” on page 39](#) to play prerecorded files.

EZ menu [\(See on page 54\)](#)


With this	You can do...
Media	The user can view the photo or text file while listening to the radio.
Channel	The user can save or delete the channel.
Channel Setting	The user can automatically/manually save the channel.
Brightness	The user can adjust the brightness in 10 levels from 0 to 9.
Information	Radio information display

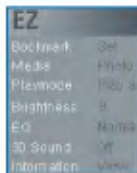



Using EZ menu

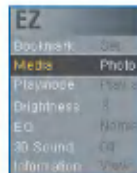
Selecting EZ feature



The user can easily search the feature or change the mode using EZ features while playing or recording music and video, listening to the radio, or viewing the text of photos (Recording is possible only in the recording selection mode)

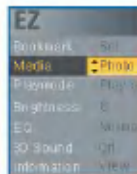
1. Press  button shortly while playing music and video, listening to the radio, and viewing the text or photos. then, the EZ menu setup window will appear.
 - Depending on the current menu, the EZ menu setup window will differ.



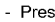



2. Adjust  button in + or - direction to select the item.



3. Enter the lower adjustment item by pressing  or  button.




4. Change the setting by adjusting  button in + or - direction, and store the new setting by pressing  button.
 - Press  button to exit without changing the setting.
5. Press  button shortly to exit the EZ menu.

Using EZ menu



Set/Move/Cancel Bookmark


1. Press  button shortly while the player is playing the music, video or text mode, or is pausing.
2. Select [Set] and set the bookmark.
 - After the bookmark is set, the menu will be automatically changed into [Move].
 - If the bookmark is not set, only [Set] menu will appear.
 - Once the bookmark is set, the user can change the bookmark only with [Cancel/Move] menu.
3. By selecting [Move], the user can go to the bookmarked point.
 - When the list is updated, or the USB will be disconnected, the bookmark will be automatically disabled.

Media selection

1. Go to [Media] field and select the menu.
 - In the photo mode: The user can listen to the music or radio.
 - In the music mode: The user can view the photo or text.
 - In the text mode: The user can listen to the music or radio.
 - In the radio mode: The user can view the photo or text.

* Radio is optional according to model. [\(See on page 14\)](#)

To select the media,

1. Press  button shortly when two modes are activated at the same time.
2. Change the setting in Media field.
 - While the music is playing, [Media] will be automatically changed into [Music].
 - While the user is listening to the radio, [Media] will be automatically changed into [Radio].
 - [Return]: The user can go to the previous mode.
 - [Next/Previous]: Music mode - The user can play the previous or next song.
 - [Next/Previous]: Radio mode - If there is a stored channel, the user can go to the previous or next channel. If there is no channel stored, only Cancel or Return will appear.
 - [Cancel]: The activated mode (radio/music) will turn off, and EZ menu will be changed into Media Selection.
 - [Select]: The music list/radio channel list will appear.

* Radio is optional according to model. [\(See on page 14\)](#)






Using EZ menu




To set Radio Channel

Manual Channels Setting





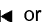


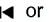

* Optional according to model. ([See on page 14](#))

1. Press  button shortly in frequency mode, while listening to the radio.
2. Select [Save] for the channel, and press  or  button.
 - The received channel is not saved.

Automatic Channel Setting

1. Press  button shortly while listening to the radio.
2. Select [Auto] in the channel setup, and press  or  button.
 - Twenty channels can be stored, and the existing channels will be deleted.
 - In an area with weak reception, the detected channels may be less than 20.
 - When the user selects [Manual], the manual channel storing window will appear.

Search Page

1. Press  button while viewing the text.
2. Select Search Page, and press  or  button.
3. Press  or  button to move the page. Then, input the page count by adjusting  button in + and - directions.
4. Press  or  button to select OK, and press  button to move to the corresponding page.







Using EZ menu



Favorite songs

When the MP3 player in the MTP mode in the Windows Media Player 10 (WMP 10), the favorite score of WMP 10 will be automatically brought.

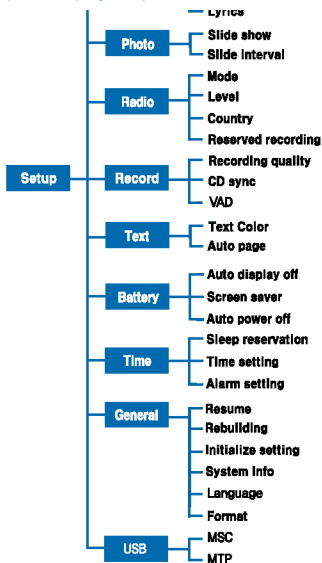
1. Press  button for two seconds or longer while the player is playing the music or paused.
2. Adjust  button in + or - direction to select [Playlist / Library].
3. Select the file, and press  button shortly.
4. The user can check the current favorite song in Favorite Songs menu.
 - Adjust  button in + and - directions to give the favorite score.
 - The favorite songs are of five levels (1 ~ 5).



Setting details

Setup menu structure

* Menu tree structure varies according to product models [\(See on page 14\)](#)



Music

• Playing mode

- Repeat one: The user can repeat one song.
- Play folder: Plays all songs in the folder.
- Repeat folder: Repeats all songs in the folder.
- Random play folder: Randomly plays all songs in the folder.
- Random repeat folder: Randomly repeats all songs in the folder.

• Play speed: The user can set the playing speed of MP3 files.

- The user can select [X0.3], [X0.5], [X1], [X1.5], and [X2].
- The default value is X1.
- MP3 files sampled less than 32KHz can support only X1.

• Sound effect

- EQ: The user can set the sound effect.
- Auto EQ, Normal, Pop, Rock, R&B/Soul, Hip Hop/Rap, Jazz, Classical, Dance, Live, User EQ
- 3D Sound: The user can experience 3D sound effects.
- 3D sound effects may be small for cancel, 3D expander, stadium, concert hall, club, room, bass boost, X-live (OGG Q10 500Kbps or higher, and VBR file)

• Fade in: The user can gradually increase the vol-

Setting details



ume to protect ears.

- The user can select [On] or [Off].
- **ID3 tag: Displays information of the music file.**
 - The user can select [On] or [Off].
 - In case the user selects [Set], the title and the artist will be displayed.
- **Scroll speed: Sets the speed of the file name and ID3 tag information in the music playing mode.**
 - The user can select [Off], [X0.5], [X1], [X2], and [X3].
- **Lyrics: Displays the lyrics of the music file.**
 - The user can select [On] or [Off].

Photo

- **Slide Show** The user can set/cancel the slide show.
 - The user can select [On] or [Off].
- **Slide interval: The user can set/cancel the slide show.**
 - The user can select [2 sec], [3 sec], [4 sec], or [5 sec].

Radio

* Optional according to model. [\(See on page 14\)](#)

- **Mode: The user can set the reception mode.**
 - The user can select [Stereo], [Mono] or [Auto].
- **Level: The lower, the more frequency channels.**
 - The user can select [High], [Standard], or [Low].

- **Country: The user can set the reception area.**

- The user can select countries.
- **Reserved recording: The user can reserve the FM radio recording.**
 - The user can set the frequency for reserved recording.
 - Reserved recording feature is activated only when the player is turned off.
 - The user can set only one reserved recording.
 - Recording can be made for maximum 23 hours and 59 minutes.

Record

* Optional according to model. [\(See on page 14\)](#)

- **Recording quality: The user can set the quality of the recorded file.**
 - The user can set [96Kbps], [128Kbps], or [192Kbps].
- **CD sync: In case the gap between recordings from an external source last as long as defined, the current recording will stop and a new file will be created.**
 - The user can select [Off], [2 sec], [3 sec], [4 sec], or [5 sec].
- **VAD: In case of voice recording, recording will automatically stop upon mute sound and will resume upon reception of the voice signal.**
 - The user can select [On] or [Off].



Setting details

Text

- **Text color:** The user can set the character color in the text mode.
 - The user can select [Gray], [Yellow], [Blue], or [Pink].
- **Auto Page:** After the certain time passes, the player will automatically open the next page.
 - The user can select [Off], [1 sec], [3 sec], [5 sec], or [10 sec].

Battery

- **Auto display off:** If no button is inputted during the given time, the LCD will be automatically turned off.
 - The user can select [5 sec], [10 sec], [30 sec], or [60 sec].
- **Screen saver:** If no button is inputted during the given time, the screen saver will automatically start.
 - The user can select [On] or [Off].
 - The screen saver may not function while the text, video, or photo is displayed.
- **Auto power off:** If no button is selected in the standby mode for playing, the screen will be automatically turned off.
 - The user can select [Off], [30 sec], [1 min], [5 min], or [10 min].

Time

- **Sleep reservation:** When the defined time passes, the player will be automatically turned off.
 - The user can select [Off], [10 minutes], [30 minutes], [1 hour], or [2 hours].
 - If the user sets the turning-off reservation, the player will automatically store files and turn off at the reserved time.
 - After the player is turned off at the reserved time, the turning-off reservation will be automatically cancelled.
- **Time setting:** Sets the current time.
 - The user can set years between 2001 and 2099.
 - When downloading files in the MTP mode, the time setting of the player will be synchronized with the time setting of the PC.
- **Alarm setting:** The music playing will automatically resume at the alarm time.
 - The user can select [Off], [Once], or [Always].
 - In other modes than the music playing mode, the player will enter into the FM mode when the resume is cancelled.
 - Those models which do not support the radio mode start with the home menu screen when no music file is available.

Setting details



General setting

- **Resume:** This feature remembers the last playing status (for example, the file or playing time) and automatically returns to the last playing status.
 - The user can select [On] or [Off].
 - If the user turns off the player in Recording/Setup mode not in playing mode (for music, radio, video, photo, and text) and turns it on again, the player will enter into Home menu.
- **Rebuilding:** The user can search the downloaded files and update the list.
 - The user can select [Yes] or [No].
 - If the user selects [Yes], the list will be updated. If the user selects [No], the player will return to the general setup screen.
 - As updating the list may take time, check the battery status in advance.
- **Initialize Setting:** The user can initialize the setting of the player.
 - The user can select [Yes] or [No].
 - After the player is initialized, the player will be automatically turned off.
- **System info:** The user can check product information.
 - The firmware version, the entire memory space, the used memory, and the remaining memory space are displayed.
- **Language :** The user can select the language.

- Korean, English, Traditional Chinese, Simplified Chinese, French, German, Japanese, Portuguese, Russian, Spanish
- **Format:** The user can delete all data in the memory, and initialize the memory.
 - The user can select [Yes] or [No].
 - If the user selects [Yes], formatting will be made. If the user selects [No], the player will return to the general setup screen.
 - Back up the data stored in the player before initializing it.
 - Deleted data cannot be recovered.

USB

- **Mass Storage Class (MSC) mode**
 - The player will function as a general removable storage in this mode.
- **Media Transfer Protocol (MTP) mode**
 - The MTP applies the latest technology of Microsoft to support the multimedia devices. It is recognized as a mobile devices and compatible with Windows Media Player10.



Using the application program

LG Media Center

The LG Media Center program is an integrated data management program developed for users to more conveniently use the MP3 player.

• Features of the LG Media Center

- The user can efficiently manage music, video, photo, and text file through the Media Library rule and download them to the MP3 player.

• Contents Service menu


- Music Store: Music purchase, Streaming service
- Media Cast: Music, video, broadcasting service purchase (Period-based service)
- For more information, see the Help menu of the program or visit www.lgand.co.kr.

LG Media Center - Firmware Updating

Connect the player to the PC where the LG Media Center is installed to download a new version of firmware.

- Functions only in the Internet-connected PC.

1. Connect one end of the USB cable to the USB port of the PC with the LG Media Center installed and the other to the USB port of the player.

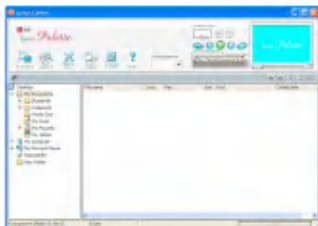
2. The LG Media Center will compare the firmware versions of the player and the server. If it detects a new firmware version, it asks the user whether to update the version.
3. Click on [OK] button to copy new firmware to the MP3 player.
4. Upon updating, new version firmware will be copied to the MP3 player.
5. To safely remove the device, remove the USB cable.
6. When "Firmware upgrade?" message is displayed, click on  button.
7. The firmware updating progress bar will be displayed. After completion, the power will be automatically turned off.
 - Wait till the power is automatically turned off.
8. Turn on the MP3 player, and check the updated version of firmware.
 - *** "General setting" on page 61 ***

Using the application program



LG Lyrics Center

The LG Lyrics Center program can automatically/ manually store the lyrics in the music file. It also can download/upload mp3 files to/from the portable device and control the volume.



- The user can store lyrics of the several songs at the same time. Stored files will be connected without requiring a separate program or tool, and can be downloaded to a large-capacity storage. The user can make volumes of several MP3 files same.
- A Windows Explorer-like UI providing maximum convenience for users.
- Run the program, and click on F1 Help. The user can view the Help menu.
- Be sure to check model name and synchronize before downloading files.

View the manual

PDF document The user needs the Adobe Acrobat Reader to read the manual.

Installation of the Adobe Acrobat Reader

Click on Acrobat Reader for installation.

- Read the user manual.



Troubleshooting

Q: The player will not be turned on.

- A : Check whether the battery is remaining.
A : Connect the AC adapter and charge the battery.

Q: The screen is blur.

- A : Avoid direct sun rays and adjust the brightness.
A : Check the LCD brightness.

Q: The button does not function.

- A : Check whether the Hold feature is active.

Q: The characters on the display look broken.

- A : Download the font file from the website, and copy it to Config folder.
A : The Config folder is displayed only in the MSC mode. Change to the MSC mode (In case of the MTP mode, copy the font file to the data folder)

Q: The noise is severe during listening to the radio, and the reception is poor.

- A : The earphone functions as an antenna. Be sure to handle carefully.
A : Slightly change the directions of the player and the earphones.

Q: After the files are downloaded, the play list will not show the newly added files.

- A : Update the list in the Setup menu.
A : Format the product, and download the file.

Q: After the firmware is updated, the player is not normally functioning.

- A : Reset the product (See [page 33](#))
A : Back up the data, and format the player.

Q: Sometimes, files are not downloaded.

- A : Check the USB mode of the player (See [page 25](#) ~ [page 28](#))

Q: Files can not be downloaded.

- A : Check the USB mode. Some files can be downloaded depending on the USB mode. All files can be downloaded in the MSC mode.

Q: My PC can not detect an MP3 Player.

- A : Check the USB Mode. In the case of Windows 98 SE/ME, USB Mode should be set to MSC in Setup Menu.
A : Check if the USB driver on the provided CD is installed.

Q: AVI file will not play.

- A : Only video files transcoded by LG Media Center can be played. Make sure the files to be played are converted by LG Media Center. Refer to the LG Media Center [Help] how to transcode your files.

Troubleshooting



Q: Characters are not shown properly in text files.

A : If the text file is encoded in a format that your text file viewer doesn't understand, text data seem to be garbled or corrupted.

A : You should convert the text file into Unicode on a PC which supports your language of choice and download it. (See [page 44](#))



Product model

Type	Item	Specifications
Memory	Capacity	512MB / 1GB / 2GB / 4GB
	File system	FAT32
PC	OS for MP3 Player Device	Win98SE/ME/2000/XP
	OS for LG Media Center	Win2000 / XP
	OS for LG Lyrics Center	Win98SE/ME/2000/XP
	Interface	USB 2.0
General specifications	Dimensions	41.6(W) X 66(H) X 14.9(D)
	Weight	1.83oz (with battery) / Depends on the product model.
	Operating temperature	0°C + 40°C
Audio	Frequency range	20Hz ~ 20kHz
	Signal-to-noise ratio	85dB
	Channel response	35dB (1kHz)
	Maximum output	18mW+18mW
FM radio (Optional according to model)	Frequency range	87.5~108MHz
	Signal-to-noise ratio	50dB
	Channel response	25dB(1kHz)
	Antenna	Earphones antenna
Playback time	Video	Maximum 12 hours
	Viewing Photos while playing music	About 7 hours
	Audio	Maximum 52 hours (for 128Kbps/44.1KHz EQ normal)
Power supply	AC adapter	DC5V, 1A
	Battery (Built-in)	Lithium Polymer DC 3.7V 810mAh Chargeable Battery

Product model



Type	Item	Specifications
Files	Audio	MP3, OGG, WMA, WAV (ADPCM), ASF
	video	LG AVI
	Image viewer	JPG/BMP
	Text viewer	TXT
Display	Display	1.77" (OLED) / 260,000 colors

<http://www.lge.com>

Information related to the product is available at this site.

- By updating the firmware, the user can improve the performance of the product.



Product model

Supported file specification

MP3 Decoder

- MP3 decoding support specification including variable bit rate (VBR)

Bitrate	Mpeg1		
	32KHz	44.1KHz	48KHz
32	OK	OK	OK
40	OK	OK	OK
48	OK	OK	OK
56	OK	OK	OK
64	OK	OK	OK
80	OK	OK	OK
96	OK	OK	OK
112	OK	OK	OK
128	OK	OK	OK
144	OK	OK	OK
160	OK	OK	OK
192	OK	OK	OK
224	OK	OK	OK
256	OK	OK	OK
320	OK	OK	OK

MP3 Encoder

- 44.1KHz, (96Kbps, 128Kbps, 192Kbps) Spec

WMA Decoder

- WMA (ASF-audio only) Decode Support

Version 7 & Version 8 & Version 9								
kHz	48	44.1	32	22.05	16	11.025	8	
384			O (S)					
320	O (S)	O (S)						
256	O (S)	O (S)						
192	O (S)	O (S)						
160	O (S)	O (S)						
128	O (S)							
96	O (S)							
80	O (S)							
64	O (S)							
48	O (S)	O (S,M)						
40			O (S)					
32	O (M)		O (S)					O (M)
22			O (S)					
20			O (M)	O (S,M)				
16		O (M)	O (M)	O (S,M)				
12				O (M)				O (S)
10					O (M)	O (M)		O (M)
8						O (M)		O (M)
6								O (M)

- (S): Stereo (M): Mono

OGG Decoder

- Q(-1) ~ Q(10) Support

ADPCM Decoder

- WAV File Format (MS-ADPCM) Decode

