

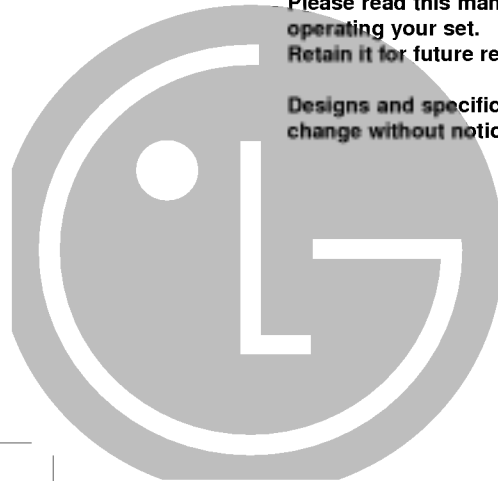
MF-FE-460-ENG



DIGITAL MUSIC PLAYER
OWNER'S MANUAL
MODEL: MF-FE461/462/465

**Please read this manual carefully before
operating your set.
Retain it for future reference.**

**Designs and specifications are subject to
change without notice for improvement.**





Contents

Important Safety Instructions	3	Advanced Operation	28-41
Precautions	4	Function Menu	28
Battery Life	4	Repeat Function	29
Player features and controls	5-9	EQUALIZER Function	30-31
Accessories	5	SRS Function(1)	32
Side Panel	6	SRS Function(2)	33
Front, Rear, Top, Bottom Panel	7	DELETE Function	34
LCD	8	ENCODE Function	35
To install Battery	9	SETTING Function(1)	36
System Requirements	10	SETTING Function(2)	37
Operation Circumstances	10	DISPLAY Function	38
What is "MP3 Player"?	11-12	LYRICS Function	38
What is "WMA"?	12	FIRMWARE UPGRADE	39
How to use your MP3 Player	13	Firmware upgrade using program	40-41
Installing Software	14-15	PC software	42-43
To install Automatically	14-15	MediaSync	42
Connecting Data In/Out Cable 16-17		MediaSync Player Deluxe	43
To connect your MP3 Player to a PC16		Specifications	44
Download Function	17		
Before Operation	18-19		
Power on/off	18		
To use Earphone	18		
Hold Function	19		
To adjust Volume	19		
Basic Operation	20-27		
To play files	20		
To pause files	20		
Local Repeat Function	20		
To skip the files	21		
To play rewind search or fast forward search the files	21		
MODE Menu	22		
MUSIC mode	23		
FM mode	24		
RECORDING mode	25		
VOICE Recording	25		
FM Radio Recording	26		
Line-in Recording	27		

Important Safety Instructions

To reduce the risk of fire or electric shock, do not expose this appliance to rain or moisture.

	WARNING	
RISK OF ELECTRIC SHOCK DO NOT OPEN		
CAUTION		
TO REDUCE THE RISK OF ELECTRIC SHOCK, DO NOT REMOVE COVER (OR BACK) NO USER SERVICEABLE PARTS INSIDE.		
REFER SERVICING TO QUALIFIED SERVICE PERSONNEL.		

The graphical symbols marked on the bottom or back of the set mean the following:



The lightning flash with arrowhead within an equilateral triangle is intended to alert the user to the presence of uninsulated "dangerous voltage" within the product's enclosure of sufficient magnitude to constitute a risk to persons.



The exclamation point within an equilateral triangle is intended to alert the user to the presence of important operating and maintenance (servicing) instructions in the literature accompanying the appliance.

To avoid electrical shock; do not open the cabinet. Refer servicing to qualified personnel. Shock hazard-do not open.

CAUTION

Use of controls or adjustments or performance of procedures other than those specified herein may result in hazardous radiation exposure.

Precautions

- If you plan not to use the main unit for a long time, remove the battery to avoid any damage caused by battery leakage and corrosion.
- Avoid listening to the main unit while driving or operating any motorized vehicle.
- Do not use the main unit in places which are extremely hot, cold dusty or humid.
- Do not drop it while using this product.

Battery Life

Battery	MP3/WMA Playback
Alkaline battery (1EA)	About 12 hours

- Continuous play of 1kHz, Silence
- Setting of display function for 10 seconds
- Above contents are measured on continuous play standard at the Volume 15 by using alkaline cell sold in the market. Use time may vary depending on type of cells used, manufacturer and conditions of use.

※ Charge the rechargeable battery or replace the battery with a new one in the following situations.

- ▶ The "□" indicator blinks.
- ▶ The operation buttons do not work.

For preventing the electrostatic discharge during use, refer to below conditions.

- If it is possible, please avoid operating this device under dry condition.
- When this device stops during normal operation, please replace the battery.

Player features and controls

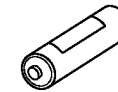
Accessories



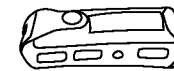
Installation CD



Data In/Out cable



Battery (AAA size)



Carrying case



Auxiliary Input/
Output Cable



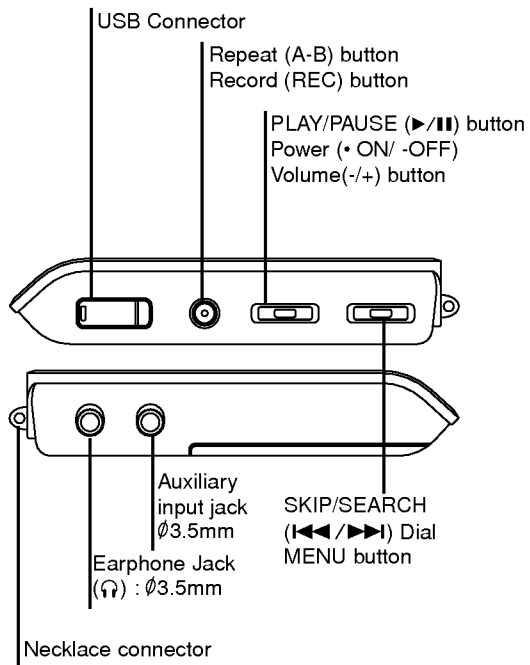
Earphone



Necklace

Player features and controls

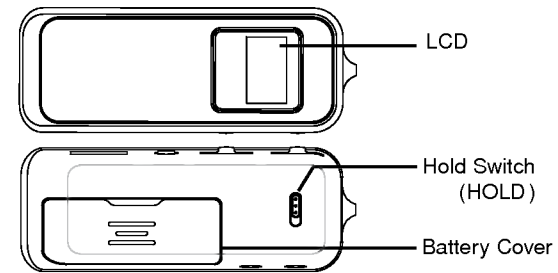
Side Panel



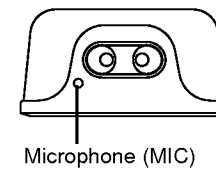
6

Player features and controls

Front/ Rear Panel



Top/ Bottom Panel



7

Player features and controls

LCD

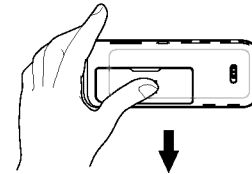


- A : Singer/Music title indicator
- B : Bit Rate indicator
- C : File Type indicator
- D : Repeat Section indicator
- E : Play/Pause indicator
- F : Play Mode indicator
- G : Hold indicator
- H : Battery Gauge indicator
- I : Equalizer indicator
- J : Music Number indicator
- K : Time Lapse indicator

Player features and controls

To install Battery

- 1** Open the battery cover.



- 2** Insert the battery.

Make sure to match the + and - on the batteries to the marks inside the battery compartment.

- 3** Close the battery cover.

Notes

- Improper use of batteries may cause battery leakage and corrosion.
- If battery leakage occurs, wipe the battery liquid from the battery compartment, then insert new battery.

System Requirements

Your MP3 Player needs the minimal system requirements for your computer.

Operation Circumstances

- OS : Windows 98SE/ ME/ 2000/ XP

You can update the MP3 Explorer software for Windows 98SE/ME/2000/XP available etc. from an internet website by LG Electronics Inc. Refer to the following sample contact procedure;

<http://www.lge.com> → Support → Select Your COUNTRY

→ Product Support → Device Driver

- CPU : At least Pentium - 133MHz
- Memory : At least 32MB (32MB above is recommended.)
- HDD Space : At least 100MB
- Video Card : 640 x 480 Mode,
At least High Color(16bit)
- USB Port
- CD-ROM Driver

Note

What is USB?

- USB : Universal Serial Bus.
- USB stands for Universal Serial Bus.
- It is a new interface based on the new concept between PC and peripherals.
- The maximum bandwidth is 12 Mbps and a maximum of 127 USB devices can be connected to a single PC.

What is “MP3 Player”?

MP3 Player is a palm size audio device that uses no moving parts for playback and lets you enjoy high quality sound that uses MPEG1 Layer 3 compression method for quality internet audio.

MP3 Player is a portable digital audio Player that plays MP3 files without requiring the use of tapes or CDs.

MP3 is a well known, high quality digital audio format. MP3 files can be compressed up to 12 times the original wave file size.

You can get thousands of MP3 files without leaving your home or waiting in long lines in record stores. Just download the files legally from anywhere in the world through your internet connection. You may have to pay for the downloaded MP3 files to the MP3 provider. The files can then be transferred to your player and listened to on your home stereo, in your car, on the beach, or any where you wish to go! Also, you can make your own CD quality MP3 files from CD or WAV making use of the MP3 encoder software.

MP3 Player takes advantage of MP3's small data size and CD quality sound.

What is “MP3 Player”?

- 1 New generation Digital Audio Player that does not require tapes or CDs.
- 2 Pure sound guaranteed while handling, exercising and jogging.
- 3 Multimedia communication audio player through PC, network and Internet.
- 4 Data storage device when transferring large data from PC to PC.
- 5 Enjoy CD quality sound while listening to MP3 files any where.
- 6 You can get thousands of songs at a fraction of CD prices from various MP3 Internet providers via the innovative Try & Buy program without leaving home! You can buy only one song at a time, no more buying a CD for the one or two songs you want.
- 7 You can select your own favorite songs, and change the order of songs whenever you like.
- 8 MP3 Player has no moving parts and will not skip since it does not require physical movement such as rotating Tapes or CDs.

What is “WMA”?

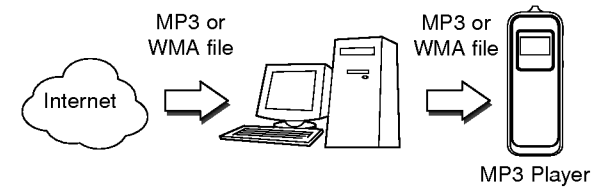
- **WMA** (Windows Media Audio code) is the highest quality in terms of a sound and music. WMA provides all type of the best sounds from 8kHz to 48 kHz.
- **WMA** files can be compressed up to 30% the original MP3 file size and can sound as good as an MP3 file.

How to use your MP3 Player

You'll need to have MP3 files stored on your computer, a data In/Out cable and your MP3 Player.

Using the MP3 Explorer software, select the MP3 files you wish to transfer from your PC to the MP3 Player.

You can transfer songs from your PC to your MP3 Player via your USB port with a data In/Out Cable. Also, you can transfer data from your MP3 Player to your PC!

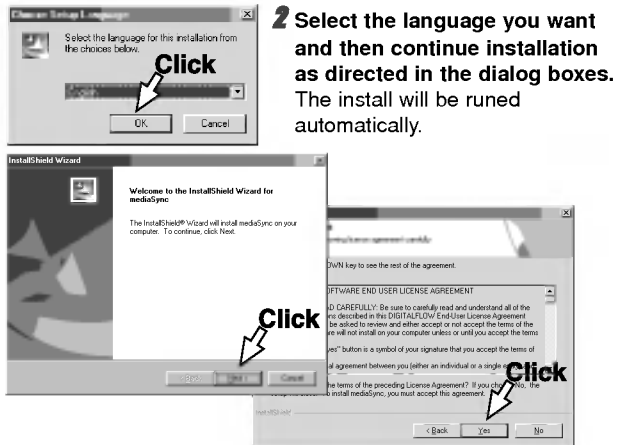


Installing Software

To install Automatically

1 Insert the software CD into drive D:\ (CD ROM drive).
Select the MF-FE460 Driver.

- The driver is automatically installed if installing application program provided with a CD.

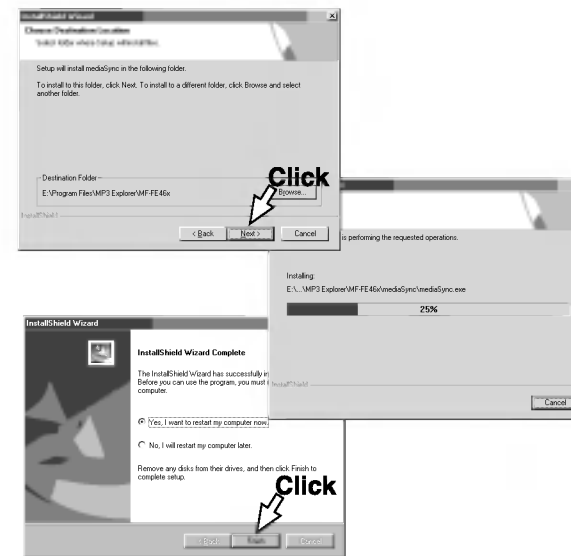


Note

When you install the supplied software CD, don't connect the supplied Data In/Out cable to a PC from your MP3 Player. After you install the software CD, connect the supplied Data In/Out cable to a PC from your MP3 Player.

Installing Software

3 Click "NEXT" button in the series of the windows that appear.

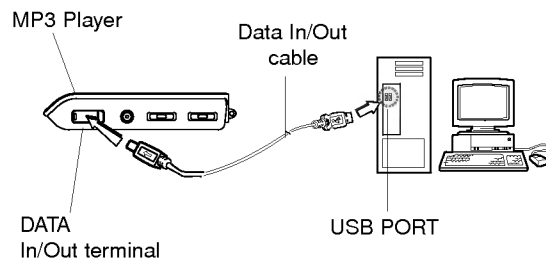


- Program setup at the same time is normally recognized only when restarting a computer if driver installation is completed.
- Connect both the USB port of a PC and the USB In/Out terminal of the MP3 player with the USB In/Out cable for normal operation when executing initial program.

Connecting Data In/Out Cable

To connect your MP3 Player to a PC

To complete setup, you should connect the supplied Data In/Out cable to a PC from your MP3 Player.



Compare the two ends of the cable.

Connect one end with the USB port on the back of your PC and then plug the other end into the Data In/Out terminal of your MP3 Player.



The product will be in download mode.
The power will be turned on even if there is no battery.

Note

Driver installation is required for the Windows 98SE operating.

Connecting Data In/Out Cable

Download Function

1 Connect the product to the USB port of a PC. Driver software will automatically be installed.



An Icon on the LCD indicates "ready" status for download.

- Not available on operating systems before Windows 98SE.
 - Driver installation is required for the Windows 98SE operating.
- 2 Select "Removable Disk" with your favorite explorer software.
 - 3 Copy audio files (MP3/WMA/ASF) from the hard disk to the Removable Disk.
 - 4 Run "Hardware Eject" bottom right and click "Stop" after finishing the download.



(Double Click)

5 Disconnect the product after checking the message for safe removal of a "USB removable disk".

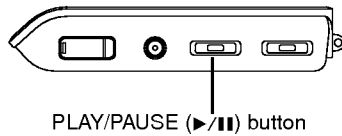
Note

- Never change folder name that is damaged in any way.
- Create sub folders under the Removable Disk for effective file management.

Before Operation

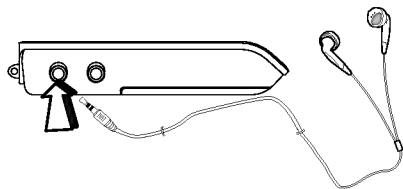
Power on/off

- To turn on, press the PLAY/PAUSE (▶/||) button.
- To turn off, press the PLAY/PAUSE (▶/||) button for more than 2 seconds on the pause mode.




To use Earphone

Connect the earphone connector to the earphone jack.



Before Operation

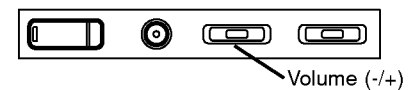
Hold Function

- This function locks the main unit to prevent it from operating when you accidentally press a button.
- Unlock it before operating.
- Push **Hold Switch (HOLD)** to lock position,  appears in the LCD and all key operations will be disabled.
- If you set the **Hold Switch (HOLD)** on the main unit to lock position and press a button in lock position, the "Holding!!" blinks about 2 seconds in the LCD.



To adjust Volume

- You can adjust the volume by pressing volume (-/+) buttons.
- The volume level can be adjusted by 31 steps.
(Min, 1~29, Max)



Basic Operation

To play files

- 1 Press ►/|| button to turn on.
- 2 Control ◀◀/▶▶ Dial left and right to select a file you want.

To pause files

Press ►/|| button during file playing.

The playing time blinks in the LCD. To resume playback, press this button again.

Local Repeat Function

- 1 File playing, press A-B button briefly once.
“A↔” appears in the LCD.
- 2 To select the local repeat ending point you want during file playing, press the button again.
“A↔B” appears in the LCD.
- 3 To cancel local repeat function, press the Book Mark A-B button.
“A↔B” disappears in the LCD.

Note

- The Local Repeat Function is not available to the FM TUNER mode.
- When you play the low bit rate (under 64kbps) files, operations can be late or song can be mute.

Basic Operation

To skip the files

To skip the next file

Press right briefly the ◀◀/▶▶ dial on the main unit to select the next file.

To skip the previous file

Press left briefly the ◀◀/▶▶ dial on the main unit within 4 seconds of playing time.

To return the beginning of the current file

Press left briefly the ◀◀/▶▶ dial on the main unit after 4 seconds of playing time.

To play rewind search or fast forward search the files

Press left or right for more than 2 seconds the ◀◀/▶▶ dial during file playing.

Note

- Play can be done in case of more than 32 kbps when playing WMA file.
- Display Time on the display window may get fast or slow when playing VBR file.

Basic Operation

MODE Menu

Briefly press **MENU** button to open **MODE** menu.

MODE menu consists of the followings as shown below:

- MUSIC : Listening to the music
- FM RADIO : Listening to the FM radio
- RECORDING : Recording



MUSIC



FM



RECORDING



EXIT

- Briefly push towards **◀◀/▶▶** to move between menus.
- Briefly press **MENU** button to select the menu.
- In all **MODE** menus, lengthily press **MENU** button or select **EXIT** to close the **MODE** menu.

Basic Operation

MUSIC mode

A mode to listen to the music files stored in the **MUSIC** memory

- Consists of **TOTAL**, **FOLDER**, **VOICE**, **LINE** and **FM**.
- If there is no music file existed, a message saying 'No Files!' will appear in the display.



TOTAL

Listening to all pieces of music in the Player in order.



FOLDER

Viewing all folders in the current memory. Specify the folder to listen to the music files in it.



VOICE

Listening to the voice recording files.



LINE

Listening to the files recorded through external line.



FM

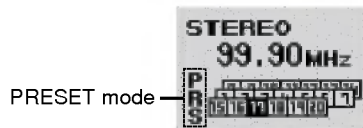
Listening to the recorded FM radio broadcasting.

Basic Operation

FM mode

A mode to listen to the FM radio

Briefly press MENU button and use ◀◀/▶▶ to move to the FM RADIO mode, and then press MENU button to select.



Manual Tuning :

Briefly push towards ◀◀/▶▶ to change the frequency.

Auto Tuning :

Lengthily push towards ◀◀/▶▶ to automatically search the next or previous station.

Manual Saving :

If you push the ▶/|| button short while listening to FM radio, the current broadcast is stored at PRESET.

Auto Saving :

If you push the ◀◀/▶▶ long in the PRESET mode, all the broadcast are automatically searched to be stored at PRESET.

Note

- If you press the REC/A-B button briefly during FM radio receiving, the button serves to switch over between preset mode and Frequency mode.
- MONO or STEREO is automatically selected.
- Previously saved channels are voided.

Basic Operation

RECORDING mode

A mode related to the recording, which consists of VOICE REC. and LINE ENC.



Recording the voice.



Recording the music file being played in the external device through the LINE IN.

VOICE Recording

1 Turn the player on to step on

MENU > RECORDING > VOICE REC, which is followed by a vocal recording. (Or, if you push the REC button long while the player is played, a voice recording will begin.)

- If you want to pause, push the ▶/|| button short.
- If you want to begin recording again after that, push the ▶/|| button short.

2 If you want to stop recording, push the REC button long.

The recorded files will be stored in the VOICE folder in the following format: V001.MP3 or V002.MP3.

3 If you want to play the recorded files, step on

MENU > MUSIC > VOICE to locate the applicable files. Then, use ◀◀/▶▶ to play the player.

Note

Press and hold the REC button at Record Stop or Pause status to convert to the MP3 main screen.

Basic Operation

FM Radio Recoding

Briefly press MENU button and use ◀◀/▶▶ to move to the FM mode, and then press MENU button to select.



- 1** If you want to record while listening to FM radios, push the REC button long.
- 2** If you want to stop recording, push the REC button long.
The recorded files are stored in the RADIO folder in the following format: F001.MP3 or F002.MP3.
- 3** If you want to play the recorded files, step on MENU > MUSIC > FM. Then use FF/REW to locate and play the applicable files.

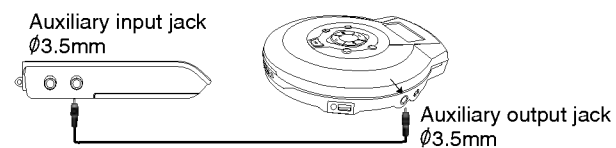
Note

Press and hold the REC button at Record Stop or Pause status to convert to the MP3 main screen.

Basic Operation

Line - In Recording

Connect the external device to be recorded as shown below..



- 1** Turn the player on to step on MENU > RECORDING > LINE REC, which is followed by a vocal recording. (Or, if you push the REC button long while the player is played, a line-in recording will begin.)
 - If you want to pause, push the ▶/|| button short.
 - If you want to begin recording again after that, push the ▶/|| button short.
- 2** If you want to stop recording, push the REC button long.
The recorded files will be stored in the LINE folder in the following format: L001.MP3 or L002.MP3.
- 3** If you want to play the recorded files, step on MENU > MUSIC > LINE to locate the applicable files. Then, use ◀◀/▶▶ to play the player.

Note

- File compression rate can be selected of 48, 96, 128 or 192 Kbps.
- Press and hold the REC button at Record Stop or Pause status to convert to the MP3 main screen.

Advanced Operation

Function Menu

Lengthily press **MENU** button to open **FUNCTION** menu. Each menu has its sub-menu. If you push the **MENU** button in the sub-menu short, the applicable item is selected. If you push it long, its main screen is displayed.



- REPEAT : A function to select the playback mode.
 - EQUALIZER : A function to select the sound mode.
 - SRS : A function to select the 3D sound effect mode.
 - DELETE : A function to delete the file or folder.
 - ENCODE : A function to adjust the bit rate of recording.
 - SETTING : A function to define the setup status .
 - DISPLAY : A function to define the time of display off.
 - LYRICS : A function to display the lyrics of MP3.
- Briefly push towards **◀◀/▶▶** to move between menus.
 - Briefly press **MENU** button to select the menu.
 - In all **MODE** menus, lengthily press **MENU** button or select **EXIT** to close the **MODE** menu.

Advanced Operation

REPEAT Function

A function to select the repeat mode



Playing all pieces once in order.



Each piece of music stored in the memory is played just for 10 seconds to the end.



A single selected piece of music alone is repeated.



Repeating all pieces in order.



Repeating all pieces in no order.

Advanced Operation

EQUALIZER Function

A function to select the sound adjustment mode during the playback.

Each menu has its sub-menu. If you push the MENU button in the sub-menu short, the applicable item is selected. If you push it long, its main screen is displayed.



Normal mode without equalizer control.



Optimized for orchestral music.



Optimized for R&B, soul and country music.



Tender sound with powerful feeling.



Sweet sound with soft feeling.

Advanced Operation

In the USER menu, you can adjust the sound in 9 steps for each frequency within 5 frequency ranges.



Use **◀◀/▶▶** button to move on the horizontal axis, while use **VOL-** and **VOL+** button to move on the vertical axis.

Note

- The selected item is shown in the Main Menu screen.
- The function of EQ is applied only when the function of SRS is normal.

Advanced Operation

SRS Function (1)

SRS-WOW is a general designation of the 3-dimensional virtual sound effect developed by the SRS Lab, which consists of SRS, TruBass, FOCUS and WOW.



The player is played with the effect of SRS not applied.



Enjoy the 3-dimensional sound effect.



Improve the bass sound to make spectacular sound.




Enjoy the WOW function.



The user can define the special level of the SRS, TruBass and WOW.

Note

-  is a trademark of the SRS Labs, Inc.
- WOW technology is incorporated under license of the SRS Labs, Inc.



Advanced Operation

SRS Function (2)

SRS-WOW is a general designation of the 3-dimensional virtual sound effect developed by the SRS Lab, which consists of SRS, TruBass, FOCUS and WOW.





Adjust the set value of the SRS.

Use /  button to adjust in 0-10 steps.



Adjust the set value of the TruBass.

Use /  button to adjust in 0-10 steps.



Adjust the definition of the sound.

(Low, Middle)

Note

- The function of SRS is applied only when the function of EQ is normal.

Advanced Operation

DELETE Function

This is a function where a file within a memory is deleted.



Select the file or folder to delete.



Delete all files in the Player.



You can delete all the files including the font used in the player. If you have worked on Low Formatting, download them again. You'd better use this function, only if necessary.

Note

- once it has been deleted, you can't recover it.
- How to download the font
 1. Connect the Player with the PC.
 2. Download a font file to the Player in the FONT folder of the installation CD.(CD ROM : ivfont.iwf)
 3. Separate the player from the PC, and there will appear the window FONT UPGRADE. The completion of upgrading will show an initial status.



Advanced Operation

ENCODE Function

A function to adjust the bit rate of recording.



Adjusting the bit rate of the line recording file according to your need.

You can select one of following bit rates.

- LEVEL: LO/MI/HI
- BIT RATE: 48/96/128/192Kbps



Adjusting the bit rate of the voice recording file according to your need.

You can select one of following bit rates.

- BIT RATE: 16/32/64Kbps



OFF

Recording all pieces externally inputted in a file until STOP button is pressed.

ON

Automatically sorting all pieces externally inputted to record in a separate file.

Note

- The function of SRS is applied only when the function of EQ is normal.
- A higher Bit Rate increases the quality but reduces recording time.

Advanced Operation

SETTING Function (1)



Define the time to automatically turn the power OFF.

Use ◀◀/▶▶ button to adjust in 0,30,60,90,120,150 seconds.



Adjust the speed of scrolling the file name or the ID3 TAG information during the playback.

Use ◀◀/▶▶ button to adjust in 0-10 steps.



Adjust the brightness (contrast) of the Display.

Use ◀◀/▶▶ button to adjust in 0-10 steps.



You can adjust the volume with this setting.

If the volume at which the player was set is larger than the one set currently, the booting will begin as the set default volume. If not so, the volume set last will be applied.

Advanced Operation

SETTING Function (2)



Select one of the KOREA-USA, EU-CHINA-RUS BAND and JAPAN BAND to set the frequency range of the FM radio station.

- KOREA-USA : 87.5~108 MHz (100KHz)
- EU-CHINA-RUS : 87.5~108 MHz (50KHz)
- JAPAN : 76~108 MHz (100KHz)



This function makes language selection for ID3 tag display.

Select one of KOREAN, ENGLISH, CHINESE, JAPANESE.



Initialize set mode to reset all the functions to their factory settings.

- REPEAT : REPEAT ALL
- EQUALIZER : NORMAL
- SRS : NORMAL
- LINE IN LEVEL : LOW
- LINE BIT RATE : 128 kbps
- DISPLAY : EVER
- VOLUME : 15
- LYRIC : ON
- SLEEP : 0
- SCROLL : 5
- DEFAULT VOLUME : 15
- FM RADIO : 97.30 MHz

Advanced Operation

DISPLAY Function

This function can set automatic "Display off" when the set time is passed.



Turning the display off when there is no operation for 10 seconds.



Turning the display off when there is no operation for 20 seconds.



Turning the display off when there is no operation for 30 seconds.



Leave the display on.

LYRICS Function



The lyric of the MP3 file will be shown in the display window.
File name will be displayed by default for songs with no lyric.



The name of the MP3 file will be shown in the display window.

Play, Repeat, Remained Quantity of Cell display icon are not provided when selecting menu of lyric support.

Advanced Operation

FIRMWARE UPGRADE

You can upgrade FIRMWARE to add, change or improve the functions of the player, in which the Firmware means its Operating System.

- 1 Confirm the FirmWare version of the Player, which appears on the display when turning the power ON.
- 2 Visit the company website (www.lgxfree.co.kr) to check if there is an upgraded version available for the Player. If yes, download and save in the disk.
- 3 Use the USB cable to connect the Player with the PC, and open a Windows Explorer to access to the "Removable disk".
- 4 Copy the downloaded file to the removable disk.
- 5 If you separate the player from the PC, there appears the message "F/W! UPGRADE" on the display to upgrade the firmware.



Note

- There should be left over two partitions in the remaining power of the battery Before firmware upgrade.
- Make sure do not turn the power OFF the Player during the upgrade.

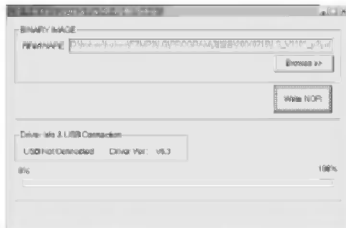
Advanced Operation

Firmware upgrade using program

Used when firmware is damaged when upgrading firmware.

- Separate the cell from the player before firmware upgrade.

1 Execute the LGE_FWDN file in the Firmware Upgrade folder within a CD.





2 Connect the player and the computer by using USB cable while pressing the REC button after setting the hold switch of the player to Hold Position.



- Message "USB Connected" appears if normal connection is done.

Advanced Operation

3 Selected the mfe460.rom file downloaded from a homepage <http://www.lgxfree.co.kr> by pressing the  button.

4 Upgrade firmware by pressing the  button.

5 Low format the player for program stabilization after separating USB cable (see page 30).

- Font deleted in low format must be newly updated to font (iwoffont.iwf) included in the CD provided.

PC Software

MediaSync

MediaSync Player Deluxe ("MediaSync") is a program for playing mtp files using the Digital Right Management (DRM) technology.

This program also enables users to play music files with lyrics made by MediaSync. For music files without lyrics, users can search for the lyrics on the web and insert them into the music files.

- ⇒ Run MediaSync Player Deluxe and press F1.
Help will appear.



42

PC Software

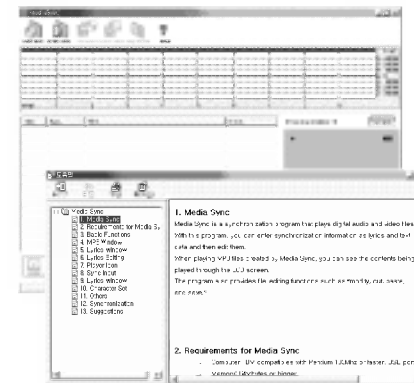
MediaSync Player Deluxe

Media Sync is a synchronization program that plays digital audio and video files. With this program, you can enter synchronization information as lyrics and text data and then edit them.

When playing MP3 files created by Media Sync, you can see the contents being played through the LCD screen.

The program also provides file-editing functions such as "modify, cut, paste, and save."

- ⇒ Run Media Sync and press F1.
Help will appear.



43

Specifications

Memory Capacity	MF-FE461: 128 MB MF-FE462/462G: 256 MB MF-FE465: 512 MB
Battery	AAA type (1EA)
Dimensions	33x17.5x86mm
Weight	34g (without battery)
Operating Voltage	1.5V DC
Earphone Output Power	6mW+6mW (1kHz,0dB/16Ω)
S/N Ratio	85 (JIS-A Filter)
Channel Separation	48 (1kHz)
Power Source	Alkaline AAA size battery 1EA
Equalize	NORMAL/CLASSIC/POP/ROCK/ JAZZ/USER
FM TUNER	
Frequency Range	87.5-108 MHz (Step : 50KHz)
S/N Ratio	55 dB
Channel Separation	25 dB
Antenna	Earphone Antenna

This product is manufactured to comply with the radio interference requirements of EEC DIRECTIVE 89/336/EEC, 93/68/EEC and 73/23/EEC.



P/NO:3834RL0006W