

Model	CYKING-1 VTC7070CT		
Language	ENGLISH		
Page	19	Color(cover/body)	2/2
Material	Weight 100g	Size(W*H)	190*260
Date	2005/11/24	Designer	WANGJIAN
Part No.	3828FI2833E	Description	MANUAL, OWNERS

Chage Record

No.	Change content	ECO No.	Date	Designer	Confirm
①	CHANGE CONTENT	AVT1506410	05.11.24	wang jian	CYT
②					
③					
④					
⑤					
⑥					
⑦					
⑧					
⑨					



OWNER'S MANUAL

V-C7070CT

Bagless vacuum cleaner





Table of contents

Information for your safety	3
How to use	4
Assembling cleaner	4
Using the cleaning head and Accessory Nozzles	6
Emptying the dust chamber	8
Operation	9
Adjusting the power level	9
How to plug in and use	9
Park-System	9
Cleaning the motor filter / Air Cleaner	10
Cleaning the dust chamber.....	11
Cleaning the exhaust filter.....	11
User's guide for sani punch vacuum nozzle	12
Features	12
Cleaning Vacuum Nozzle for Bedding	14
What to do if your appliance does not work	16
What to do when the suction performance reduces?	16

Information for your safety

Please read all the following information, which contains important instructions for the safety, the use and the maintenance of the appliance. This appliance complies with the following EC Directives: -73/23/EEC, 93/68/EEC-Low Voltage Directive-89/336EEC -EMC Directive.

- Never allow children to use the appliance unsupervised.
- Do not use the appliance if the mains lead is damaged or faulty.
- If the mains lead is damaged, it must be replaced by an approved LG Electronics Service Agent to avoid a hazard.
- Always switch the vacuum cleaner off before:
 - Emptying the dust chamber.
 - Cleaning or changing the filters.
- Do not vacuum flammable or explosive substances (liquids or gases).
- Do not vacuum hot ash, embers etc. nor sharp objects.
- Do not vacuum water or other liquids.
- When you vacuum with an attachment appliance that has a rotating brush roller:
 - Do not reach into the running brush roller.

Important for users in the UK.

The wires in the mains lead of this appliance are coloured in accordance with the following code:

BLUE-neutral

BROWN - live

VERY IMPORTANT:

Neither wire is to be connected to the earth terminal of a 3 pin plug. If a 13 amp plug is fitted, fit a 13 amp **BS 1362 fuse**.

If any other type of plug is used, protect with a 15 amp fuse at the distribution board.

For appliance which include a mains lead with a moulded-on plug, the moulded-on plug incorporates a fuse.

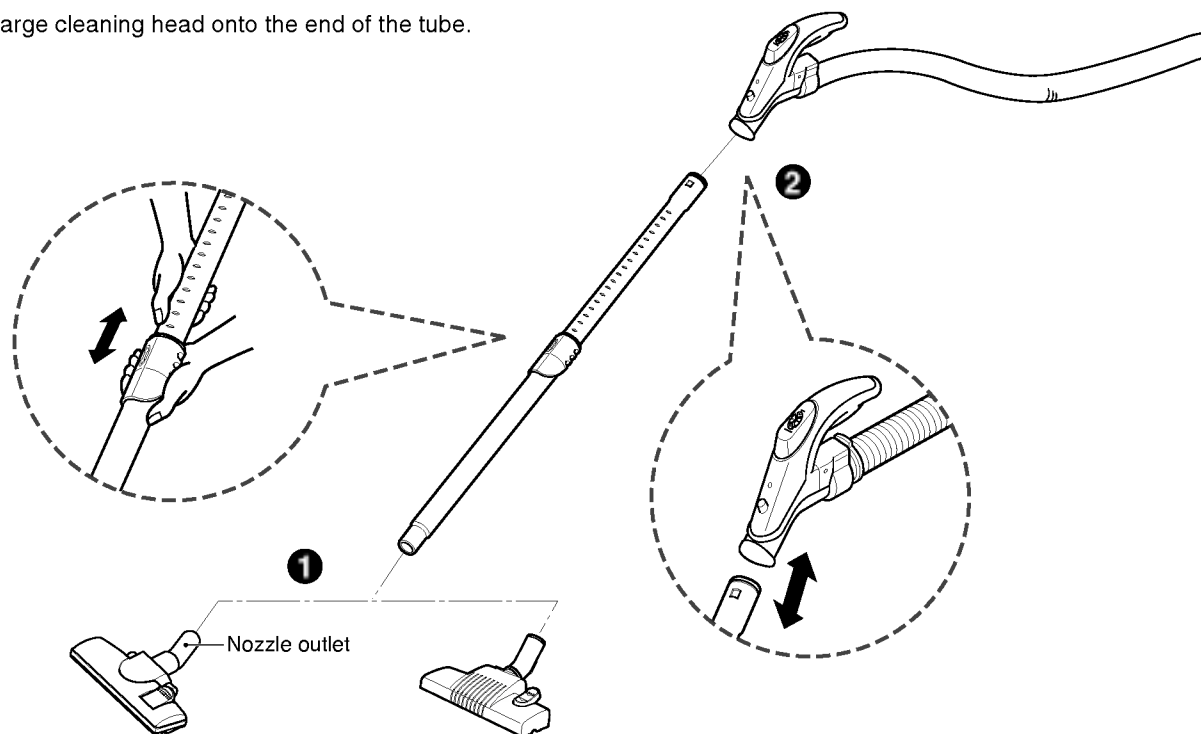
For replacement use a 13 amp BS 1362 fuse. Only ASTA approved or certified fuses should be used.

The fuse cover/carrier must be replaced in the event of changing the fuse. The plug must not be used if the fuse cover/carrier is lost.

A replacement cover carrier must be obtained from authorized electrical goods retailers.

How to use Assembling Cleaner

Fit the large cleaning head onto the end of the tube.

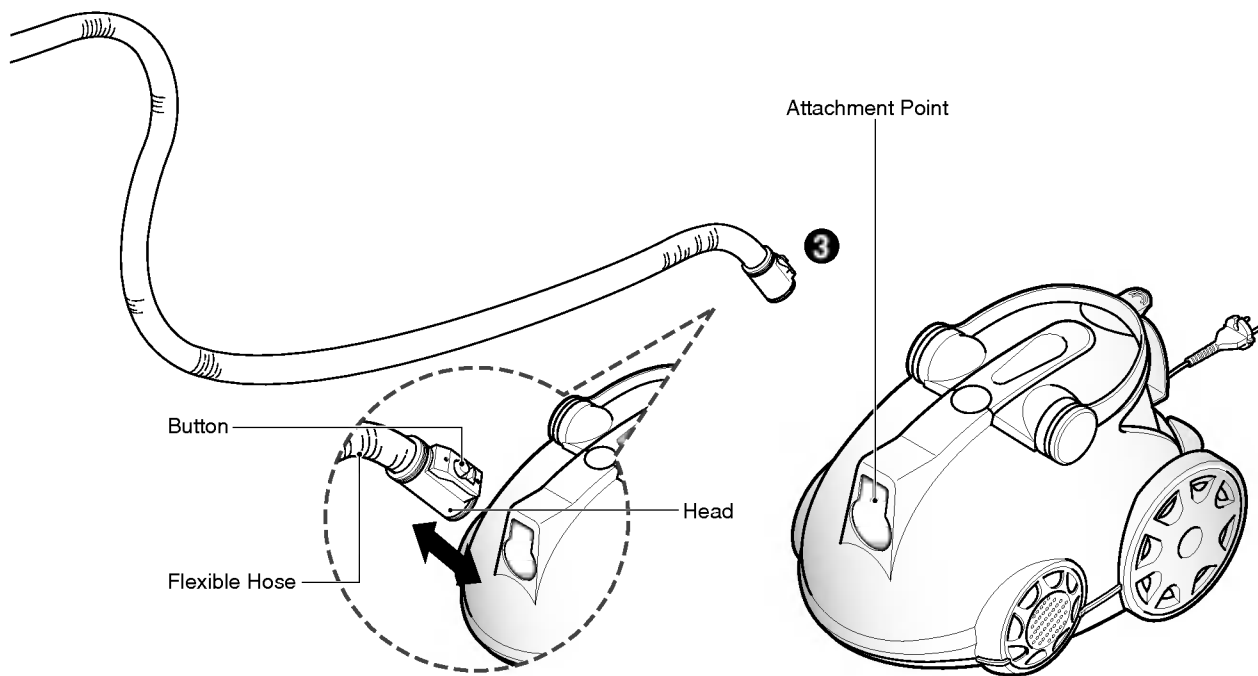


1 The 2 position head

Push telescopic tube into nozzle outlet.

2 Telescopic tube

Push telescopic tube into hose handle until catch clicks.



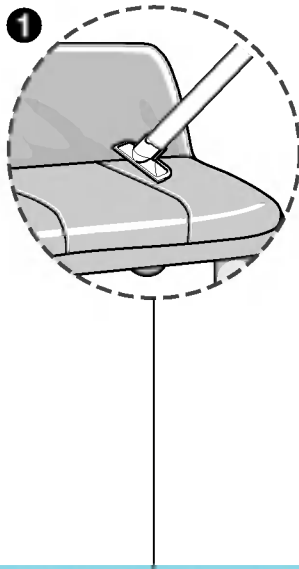
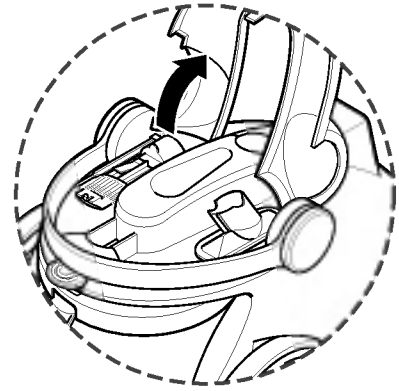
3 Connecting the flexible hose

Push the end of the head on the flexible hose into the attachment point on the vacuum cleaner. To remove the flexible hose from the vacuum cleaner, press on the button situated on the head, then pull forward.

How to use Using the cleaning head and Accessory Nozzles

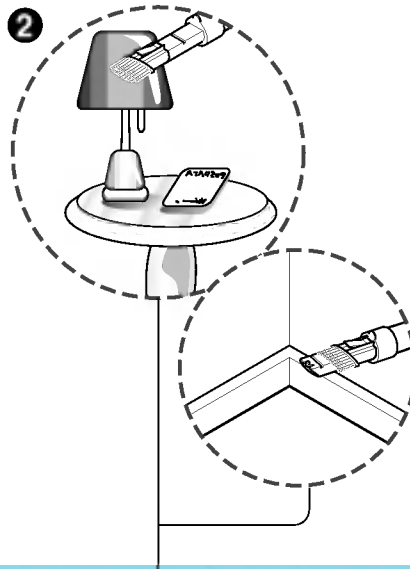
Open the accessory cover and pull out accessory you want.

Fit the cleaning head onto the end of the tube.



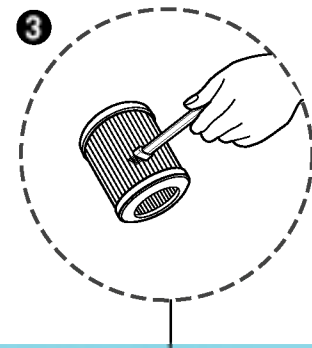
1 Upholstery Nozzle

Upholstery Nozzle is for vacuuming upholstery, mattresses, etc. The thread collectors help to pick up the threads and lint.



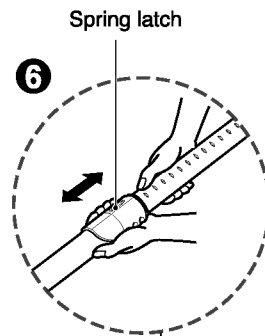
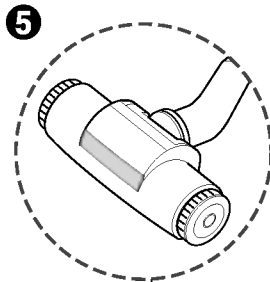
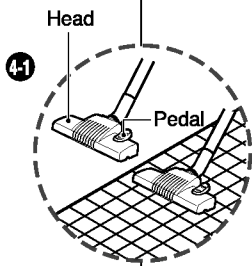
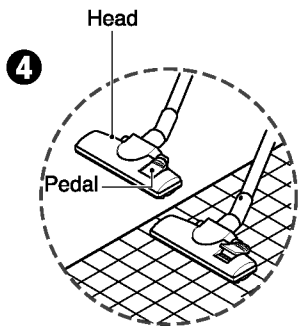
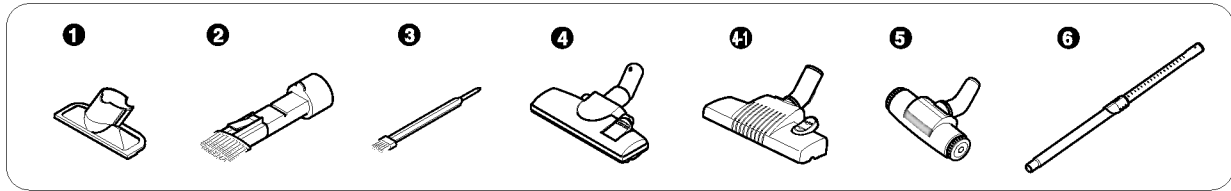
2 Dusting brush & Crevice Tool

Dusting Brush is for vacuuming picture frames, furniture outlines, books and other uneven objects.
Crevice Tool is for vacuuming in those normally inaccessible places i.e. reaching cobwebs, or down the side of a sofa!



3 Brush

Brush is for cleaning motor filter. (Air cleaner)



4 4-1 Large cleaning head

- **The 2 position heads** equipped with a pedal which allows you to alter its position according to the type of floor to be cleaned.
- **Hard floor position**(tiles, parquets floor)
Press the pedal to lower brush.
- **Carpet or rug position**
Press the pedal to lift the brush up.

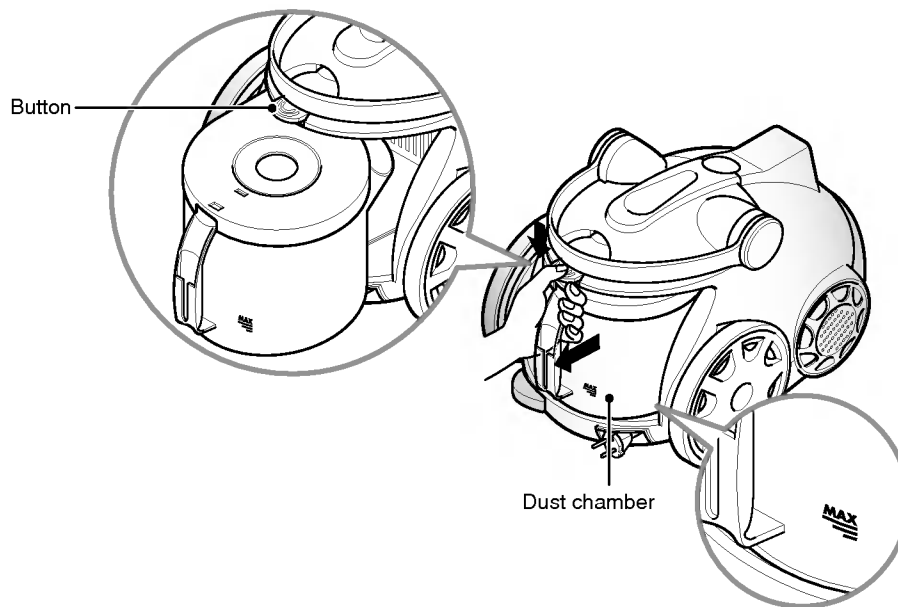
5 Sani punch nozzle

Refer to Page 12~14.

6 Adjusting the telescopic tube length

- Telescopic tube
- Pull out tube to required length.
 - Release spring latch.

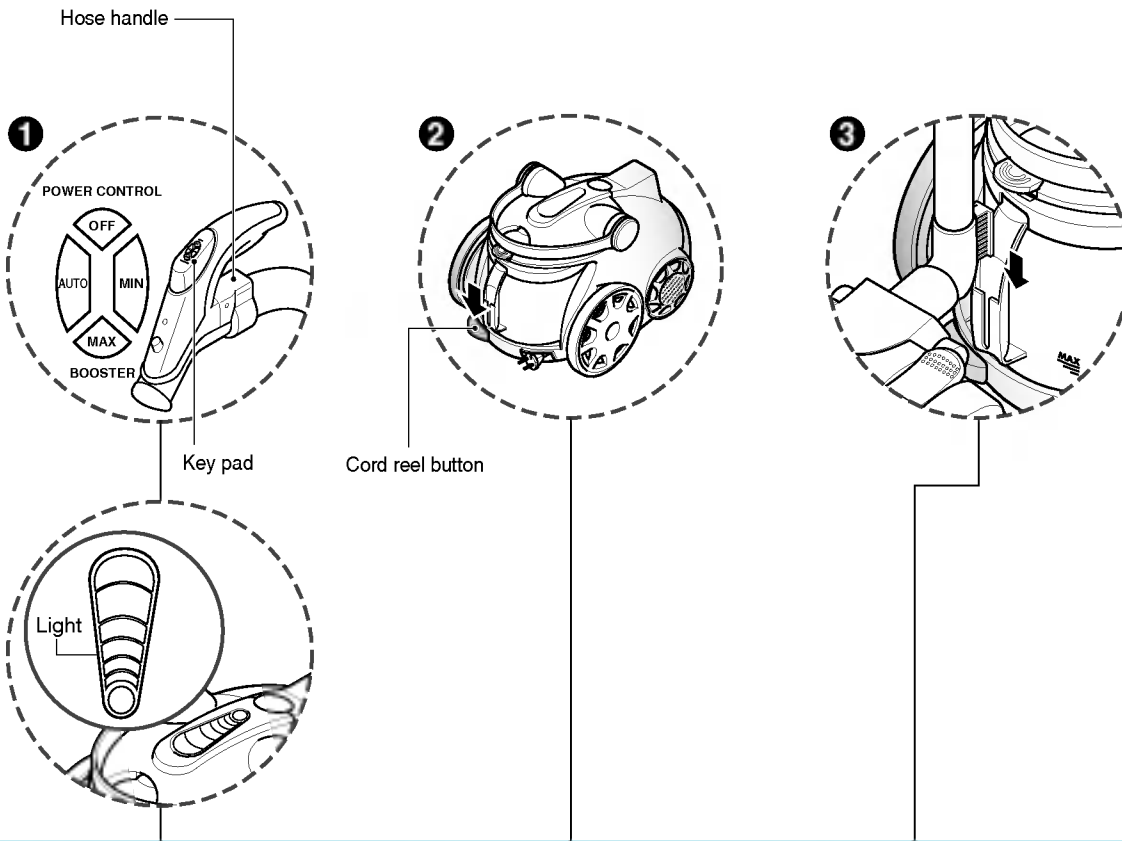
How to use Emptying the dust chamber



The dust chamber needs emptying when the dust is full by MAX which is marked on the dust chamber.

- Turn off the appliance and unplug it.
- Your appliance is equipped with both the dust chamber and the motor filter. Press the button of the cover and pull the dust chamber forward. Remove the dust chamber cap and empty the dust chamber.
- To refit the dust chamber, push the dust chamber into the tank mount until it will go no further.

Operation



1 Adjusting the power level

- Adjust power with the power control switch in the handle.
- If you press the key that you want, the light which is located on body is on differently.
- In case of auto, the power and light is controlled by the amount of dust.

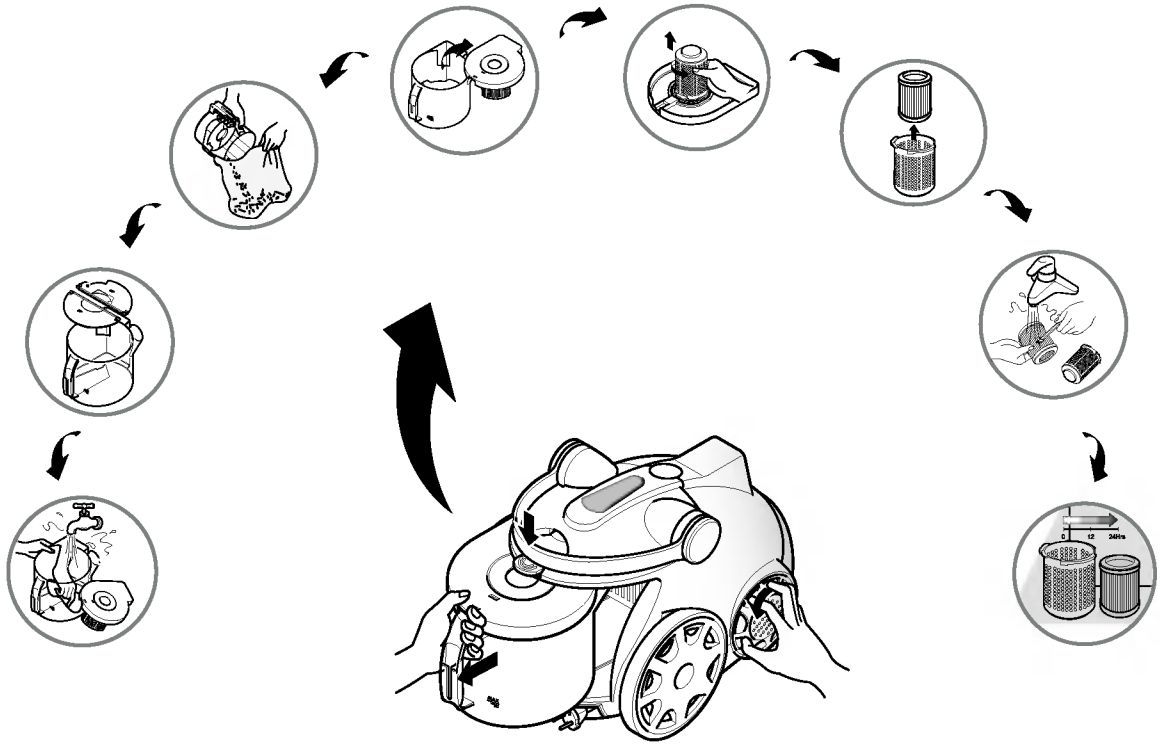
2 How to plug in and use

- Pull out the mains lead to the desired length and plug into the socket.
- Press key pad(AUTO, MIN, MAX) to start the vacuum cleaner.
- To stop it, press the key pad(OFF).
- Depress the cord reel lever to retract the power cord after use.

3 Park System

- For deposit after vacuuming, for example to move a small piece of furniture or a rug, use the Park system to support the flexible hose and cleaning head.
 - Slide the hook attached to the large cleaning head into the slot on the rear of the appliance.

How to use Cleaning the motor filter/Air cleaner



Cleaning the dust chamber

- Open the tank cap.
- Remove two plates from the dust chamber.
- Wash both parts with soft material. Gently rinse both parts under a cold running tap.

The motor filter is situated under the tank cap and you can use it permanently.

Each time the light is on and off, clean the motor filter with water and brush and then replace it in the vacuum cleaner.

- Press the button of cover and pull the dust chamber forward.
- Open the chamber cap.
- Separate the motor filter by rotating it counter-clockwise.
- Clean the motor filter with the brush under a running tap.
- Dry it in shade for a day.

Even if the light is not on, wash motor filter at least once 6 months.

⚠ WARNING!

Gently rinse both parts separately under a cold running tap until the water runs clear.

Do not use detergent or a washing machine or dishwasher.

Your filter may discolour with use, however this will not affect its filtration efficiency. Shake off excess water from the filter.

Do not tumble/spindry, microwave or place in oven or on direct heat.

Ensure the filter is completely dry.

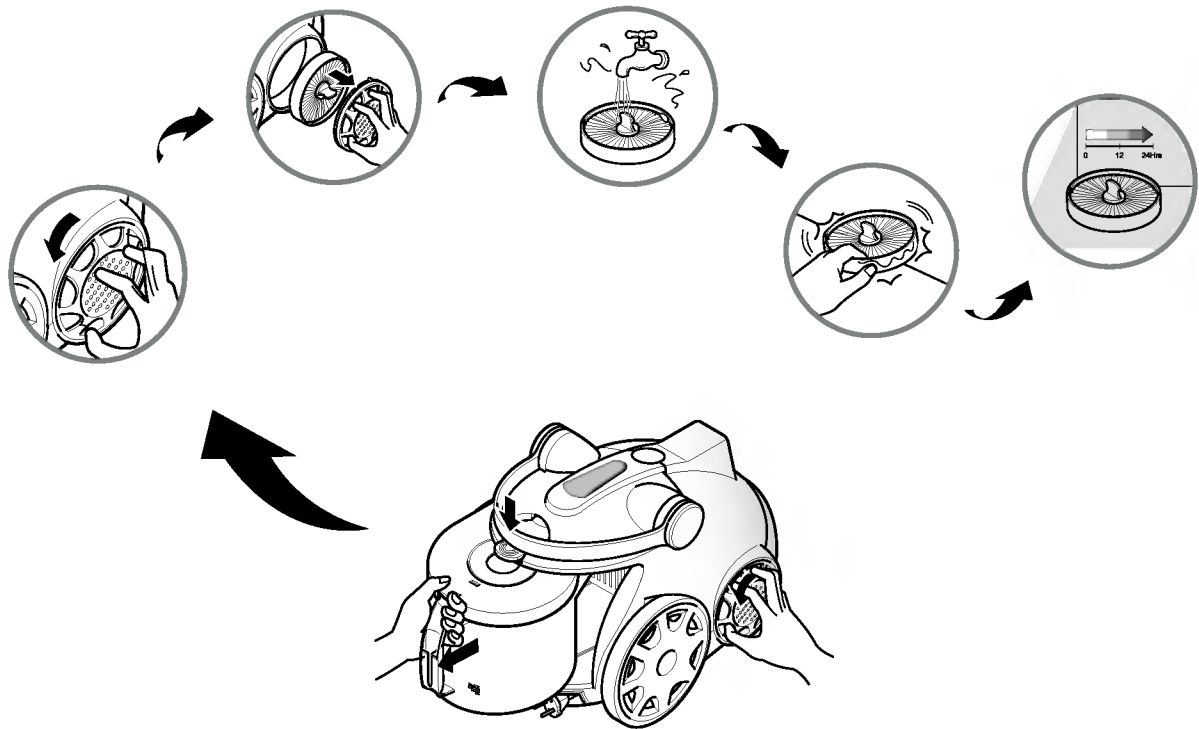
Re-assemble and place it back in your machine, filter frame.

If the filter is damaged, do not place them in the machine.

Please call the Helpline.

Do not use the wet filter to avoid clogging.

Cleaning the exhaust filters



- The exhaust filter is washable HEPA filter, so you can use it permanently.
- To change the exhaust filter, remove the filter cover on the body by rotating the filter cover counter-clockwise.
- Pull out the exhaust filter.
Clean it with water.
You must not use brush.
-This will cause permanently damage allowing dust to by-pass the filter.
- You filter may discolour with use, however this will not affect its filtration efficiency.
- Shake off excess water from the filter.
- Dry it in shade for a day.
- We advise you to clean it at least once a year.
- Do not use wet filter to avoid clogging.

User's guide for sani punch vacuum nozzle

Features

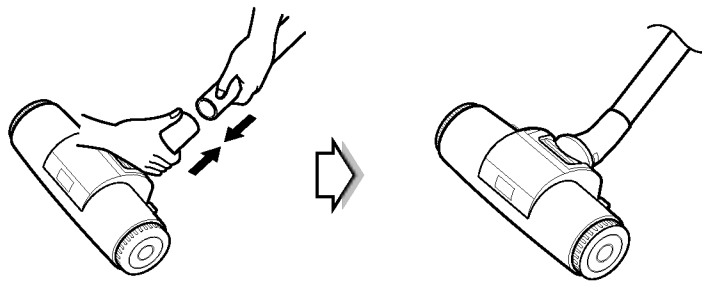
This nozzle picks up even dust inside through beating.
The bottom part can be separated to be cleaned.
Since the bottom does not stick to the surface, vacuuming is easy.

How to use

Follow the directions below for proper use.

Assembly

Connect the nozzle to the telescopic tube.



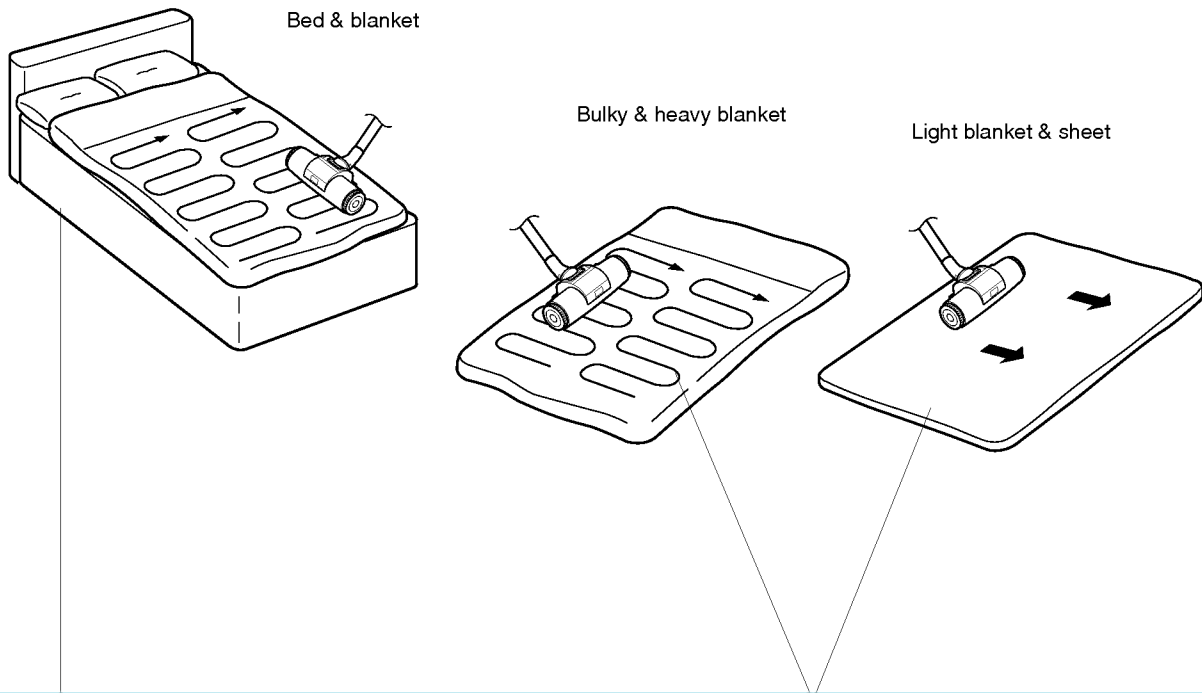
Use

Set the suction power control switch to MAX POWER before vacuuming.
According to the type of bedding, handling may be awkward or it may cause a lot of noise.
If this case occur, adjust the sunction power control switch to a lower setting.

If the punch bar does not move, lift the nozzle slightly off the surface.
If it dose not move, even after doing so, check if the suction power is too low or if the nozzle base is clogged with a foreign object.

This Sani Punch nozzle is for effective cleaning of beds and blankets to remove mites and dust.

Effective cleaning



When using on the bed

Lay out the blanket and vacuum it on the bed

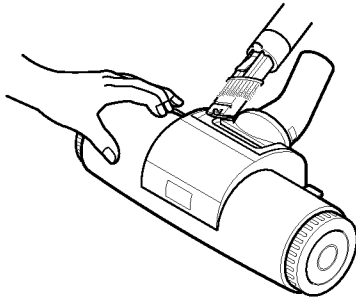
When using on the floor

It is easier to clean light blanket or sheet by pushing the nozzle to the direction of the arrow. To increase cleaning efficiency for light blankets, lay on top of a bulky blanket and then clean.

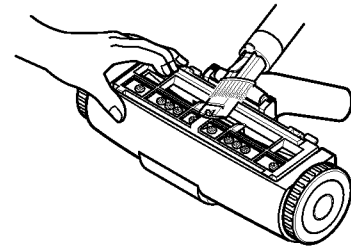
User's guide for sani punch vacuum nozzle Cleaning Vacuum Nozzle for Bedding

For simple cleaning of the vacuum nozzle, detach the Sani Punch nozzle from the telescopic tube and attach the crevice tool to vacuum dust.

Top



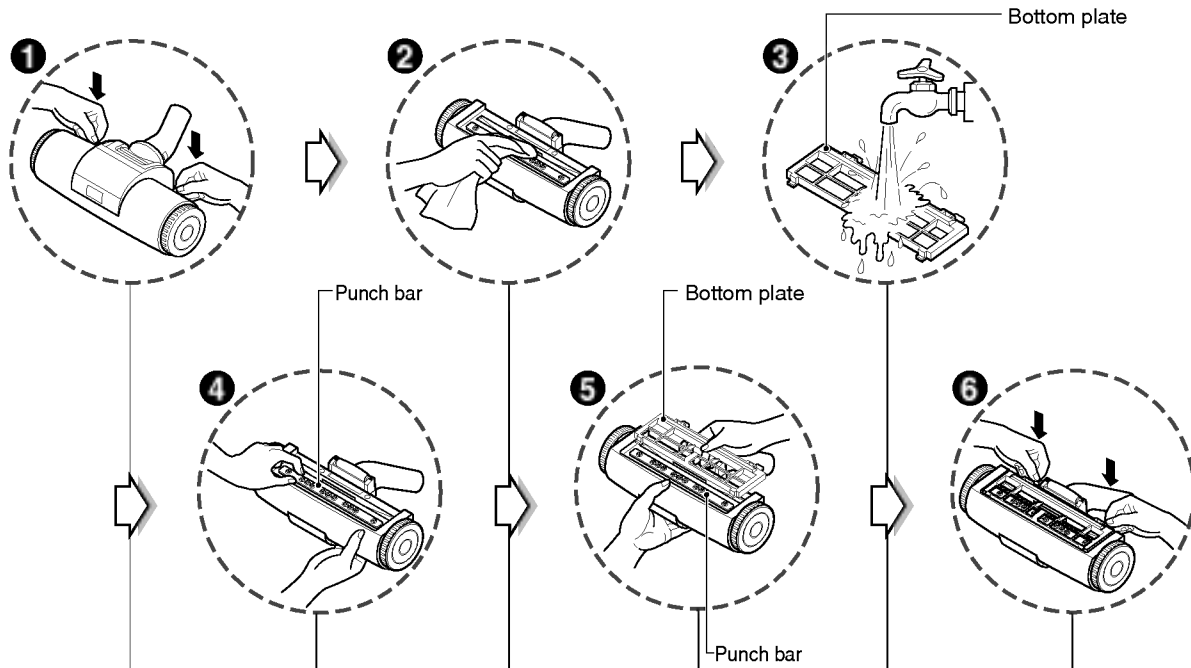
Bottom



Since the vibrator inside is composed of precision parts, never disassemble the body. Be careful not to let foreign objects clog the air suction part on top of the vacuum nozzle. Since removal of the punch bar may cause performance problems, do not warp or remove it. Attach the bottom plate properly before using. Without this bottom plate, it may not function.

Since this vacuum nozzle has been made exclusively for cleaning beds, blankets and upholstery, use it only for these cleaning purposes.
(Using it to clean the floor may result soiling it or drop in performance, do not use it for such purposes.)

Follow the instruction below for through washing.
(Do not soak the entire body of the vacuum nozzle in water, it may cause the vibrator to malfunction)



1 Press the button on the rear side of the vacuum nozzle to separate the bottom plate.

2 Wipe all the soiled parts of the vacuum nozzle body with a cloth.

3 Wash the removed bottom plate with water and dry it.

4 Straighten the punch bar on the lower section.

5 Insert the attachment projections on bottom plate to the vacuum nozzle grooves.

6 Push down the tabs to secure.

What to do if your appliance does not work

Check that the appliance is correctly plugged in and that the electrical socket is working.

What to do when the suction performance reduces?

- Stop the appliance and unplug it.
- Check that the tubes, flexible hose and cleaning tool.
- Check that the dust chamber is not full. Empty if necessary.
- Check that the light is not on because of motor filter's blockage.
- Check that the exhaust filter is not blocked.
Clean the filter.



WARNING!

If it becomes necessary to replace the moulded-on plug, destroy the defective plug so that it cannot create a possible shock hazard by being inserted into a wall socket.

Note



Note



