

**PORTABLE MUSIC PLAYER
OWNER'S MANUAL
MODEL : FM17**

Before connecting, operating or adjusting this product,
read this instruction booklet carefully and

Specifications are subject to change without
notice for improvement.



Table of Contents



Features	4	Installation and connection	25
Important safety instructions	5	Battery Info	25
Caution	7	Inserting battery	25
Warning	9	Connecting the player to the PC	25
Caution	9	Disconnecting the player from the PC	26
Industry Canada requirement	9	Basic operation	27
FCC COMPLIANCE STATEMENT	9	Turning on/off the power	27
FCC Warning	10	Lock feature	27
Disposal of your old appliance	10	Volume control	27
Package contents	11	Home menu screen	28
Name of each component	12	Playing music files	29
Front/Side view	12	Music playing screen	29
Rear/Side view	12	Play	29
Installing software	13	Pause	30
Before installing the operating program	13	Speed search of the play	30
LG Media Center	13	To search the next or previous music file	30
Installing and running firmware updater	15	Playing the music files of browser	30
Installing Win98SE Device Driver	21	File error	31
Connecting to the PC	24		
Using the removable storage device	24		
Upgrading Firmware	24		

Table of Contents



FM radio reception (Option)32	Setting lower features39
FM radio reception screen32	Setup mode screen39
Listening to the FM radio32	Operating Setup feature40
Preset/Non Preset Mode32	Play mode40
Searching the FM radio stations33	EQ (Sound effect)40
Storing FM radio frequencies33	Display Setting41
Deleting channels34	Radio (Option)41
Recording screen34	Recording Quality42
Recording FM radio broadcasting35	Time42
Listening to the radio recorded file35	General42
Playlist function36	Running Recovery43
Add to the playlist36	Using the application program45
Playlist file full36	LG Media Center45
Entering to the playlist mode36	Auto Firmware updating45
Delete one playlist37	View the manual46
Delete all playlist37	Installation of the Adobe Acrobat Reader46
Delete or add During playing back38	Troubleshooting47
Playing mode on the playlist38	Specifications48
		Supported File Spec49
		http://www.lge.com51

Features



Removable Storage Device

You can easily copy and paste files to the player using Windows Explorer.

Support USB 2.0 full speed

The user can download files at a fast speed.

FM reception (See on the page 11 'Options By Model')

With auto frequency selection feature, the user can conveniently listen to FM radio broadcasting.

Firmware upgrading

You can upgrade your firmware to the newest one.

DRM feature

What is the DRM? The DRM refers to the technologies and services that prevent unauthorized use of the digital contents and that protect the related parties of the intellectual property rights.

Note

This product supports Portable Device DRM(PDDRM). The DRM-enabled music file is encrypted so that editing the ID3 tag and lyrics is impossible.

Playlist

You can listen to music by selecting a song you want.

Important safety instructions



Please follow the safety instructions closely to reduce the risk of accidents or damage to equipment. Safety instructions are divided into Warning and Caution. Keep this manual in an easily accessible place.

Caution

Not following the instruction may result in a light accident or damage.

Warning

Not following the instruction may result in death or serious injury.

Warning



Do not place an object on the product.



Keep this product away from heat.



Do not disassemble, repair, or remodel the product.



Keep your computing environment clean and free of dust.

Caution



Do not use this product while driving.



Do not drop an object or give shock on the product.



Clean the Player with soft cloth.



Do not operate the Player near water, dust, or soot.

Important safety instructions



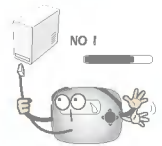
Do not place the player near a magnet or within the magnetic field.



Note that the player may malfunction in an electrostatic environment.



Do not insert a metallic object (coins or hair pins, etc.) or flammable objects in the product.
Do not drop such objects on the product either.



Do not disconnect the USB cable. Do not turn off the player while the USB cable is connected. Otherwise, the data may get lost.



Back up important data. (Note that the manufacturer is not responsible for the loss of major data caused by the user's mistake.)



Listening to the music loud for a long time may compromise your hearing ability.

Do not use earphones while riding bicycles and motor cycles or driving a car.

Check the volume before using a headphone. If headphones are used at high volume for more than 30 minutes, it may result in noise induced hearing damage.

Do not use the earphones loud while walking, especially on the crosswalks.

Stop using earphones or lower the volume when you have ringing in your ears.

Careful that headphones or earphones do not slip into the subway doors or automatic doors.

Important safety instructions



CAUTION

PLEASE READ AND OBSERVE ALL WARNINGS AND INSTRUCTIONS IN THIS OWNER MANUAL AND THOSE MARKED ON THE UNIT. RETAIN THIS BOOKLET FOR FUTURE REFERENCE.

This set has been designed and manufactured to assure personal safety. Improper use can result in electric shock or fire hazard. The safeguards incorporated in this unit will protect you if you observe the following procedures for installation, use, and servicing. This unit does not contain any parts that can be repaired by the user.

DO NOT REMOVE THE CABINET COVER, OR YOU MAY BE EXPOSED TO DANGEROUS VOLTAGE. REFER SERVICING TO QUALIFIED SERVICE PERSONNEL ONLY.

1. Read these instructions.
 - All these safety and operating instructions should be read before the product is operated.
2. Keep these instructions.
 - The safety, operating and use instructions should be retained for future reference.
3. Heed all warnings.
 - All warnings on the product and in the operating instructions should be adhered to.
4. Follow all instructions.
 - All operating and use instructions should be followed
5. Do not use this apparatus near water.
 - For example: near a bath tub, wash bowl, kitchen sink, laundry tub, in a wet basement; or near a swimming pool; and like.
6. Clean only with dry cloth.
 - Unplug this product from the wall outlet before cleaning. Do not use liquid cleaners.
7. Do not block any ventilation openings. Install in accordance with the manufacturer's instructions.
 - Slots and openings in the cabinet are provided for ventilation and to ensure reliable operation of the product and to protect it from over-heating.
 - The openings should never be blocked by placing the product on a bed, sofa, rug or other similar surface. This product should not be placed in a built-in installation ventilation is provided or the manufacturer's instructions have been adhered to.
 - Important Safety Instructions
8. Do not install near any heat sources such as radiators, heat registers, stoves, or other apparatus (including amplifiers) that produce heat.
9. Do not defeat the safety purpose of the polarized or grounding-type plug. A polarized plug has two blades with one wider than the other. A grounding type plug has two blades and a third grounding prong. The wide blade or the third prong are provided for your safety.
 - If the provided plug does not fit into your outlet, consult an electrician for replacement of the obsolete outlet.

Important safety instructions



10. Protect the power cord from being walked on or pinched particularly at plugs, convenience receptacles, and the point where they exit from the apparatus.
11. Only use attachments/accessories specified by the manufacturer.
12. Use only with the cart, stand, tripod, bracket, or table specified by the manufacturer, or sold with apparatus.
 - When a cart is used, use caution when moving the cart/apparatus combination to avoid injury from tip over.
13. Unplug this apparatus during lightning storms or when unused for long periods of time.
14. Refer all servicing to qualified service personnel. Servicing is required when the apparatus has been damaged in any way, such as power-supply cord or plug is damaged, liquid has been spilled or objects have fallen into the apparatus, the apparatus has been exposed to rain or moisture, does not operate normally, or has been dropped.



Important safety instructions



Warning

- To reduce the risk of fire or electric shock, do not expose this appliance to rain or moisture.

	RISK OF ELECTRIC SHOCK DO NOT OPEN	
WARNING: TO REDUCE THE RISK OF ELECTRIC SHOCK DO NOT REMOVE COVER (OR BACK) NO USER SERVICEABLE PARTS INSIDE. REFER SERVICING TO QUALIFIED SERVICE PERSONNEL.		

Caution

- The appliance is not intended for use by young children or infirm persons without supervision.
- Young Children should be supervised to ensure that they do not play appliance.
- Use of controls or adjustments or performance of procedures other than those specified herein may result in hazardous radiation exposure.

Industry Canada requirement

- This Class B digital apparatus complies with Canadian ICES-003.
- Cet appareil numérique de la classe B est conforme qa la norme à NMB-003 du Canada.

FCC COMPLIANCE STATEMENT

Notes

This equipment has been tested and found to comply with the limits for a Class B digital device, pursuant to Part 15 of FCC Rules. These limits are designed to provide reasonable protection against harmful interference in a residential installation. This equipment generates, uses, and can radiate radio frequency energy and, if not installed and used in accordance with the instructions, may cause harmful interference to radio communications. However, there is no guarantee that interference will not occur in a particular installation. If this equipment does cause harmful interference to radio or television reception, which can be determined by turning the equipment off and on, the user is encouraged to try to correct the interference by one or more of the following measures:

- Reorient or relocate the receiving antenna.
- Increase the separation between the equipment and receiver.
- Connect the equipment into an outlet on a circuit different from that to which the receiver is connected.
- Consult the dealer or an Authorized Service Center for help.

Important safety instructions



FCC Warning

- Changes or modifications not expressly approved by the party responsible for compliance could void the user's authority to operate the equipment.
- This MP3 PLAYER is for use only with UL listed personal computers that have installation instructions detailing user installation of card cage accessory.



Tested to Comply
with FCC Standards

FOR HOME OR OFFICE USE

3. The correct disposal of your old appliance will help prevent potential negative consequences for the environment and human health.
4. For more detailed information about disposal of your old appliance, please contact your city office, waste disposal service or the shop where you purchased the product.
 - The lithium battery contains lithium and can explode if it is not properly handled or disposed of.
 - Replace only with a battery of the type recommended by LG.
 - Caution: Danger of explosion if battery is incorrectly replaced. Replace only with the same or equivalent type recommended by LG. Dispose of used batteries according to the manufacturer's instructions.

Disposal of your old appliance



1. When this crossed-out wheeled bin symbol is attached to a product it means the product is covered by the European Directive 2002/96/EC.
2. All electrical and electronic products should be disposed of separately from the municipal waste stream via designated collection facilities appointed by the government or the local authorities.



Package Contents



Main body



USB cable



Software CD



Quick setup guide



Battery
AAA-type 1EU



Earphones

- Contents of the product are subject to change without prior notice for functional improvement.

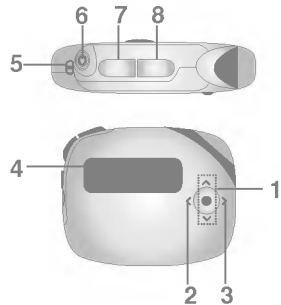
• Options By Model



MF- FM17S	○	○
MF- FM17X	X	X

Name of each component

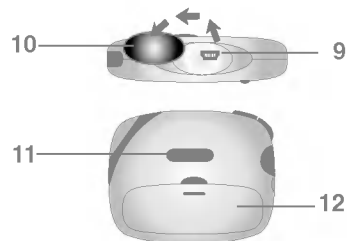


Front / Side view



1. • Menu (M) / Select button
- Goes to Home menu (upon pressing the button for two seconds or longer.)
• Volume Control / Search  button
2. REW / Search < button
3. FF / Search > button
4. Display
5. Neck strap holder
6. Earphones connector
7. Playlist (P.LIST) button
8. • ON/OFF
• PLAY/PAUSE ()
• FM Recording (FM REC)

Rear / Side view



9. USB connector
10. USB connector lid
11. HOLD switch
12. Battery cover

Installing Software



Before installing the operating program

Check the specifications of your PC before using LG portable Flash MP3 Player.

Minimum system requirements

- CD ROM Drive
- Pentium 3 or higher level CPU / 128MB or larger memory
- 100MB or larger hard disk space, 800 X 600 mode
- Hi-color (16 bit) or higher level vide card, Sound card

LG Media Center

- **Windows 2000** : Windows Media Player 9 or higher / Direct X 8.1 or higher / Internet Explorer 6.0 or higher
 - **Windows XP** : Windows Media Player 10 or higher / Internet Explorer 6.0 or higher
- Windows Media Player or Internet Explorer will be automatically installed during installation of the LG Media Center. Internet Explorer is only installed on an internet enabled PC.

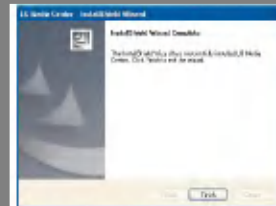
LG Media Center

1. Insert the operation program CD into the CD ROM.
2. Select the LG Media Center.



3. Follow the displayed instructions.
4. Read the License Agreement. Select the check box, and click on [Next] button.

Installing Software



Installing Software



Installing and running firmware updater

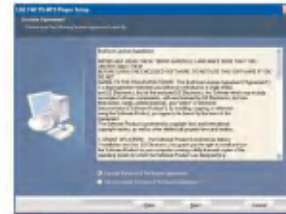
Before the initial use of MP3 player, install first the firmware updater to your PC. The user can update the firmware for addition and change of features of the player and for functional improvement.

- ✓ Do not disconnect MP3 player to the PC when updating firmware.
- ✓ You must backup your data before updating your firmware. We do not take any responsibilities for data loss if you do not backup.

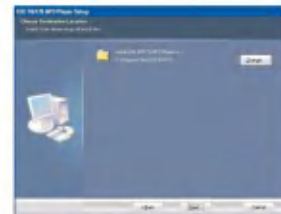
1. Insert the installation CD-ROM into your CD ROM drive.
2. Run the firmware updater.
3. Install shield wizard starts. Click [Next].



4. Read the License Agreement. Select the check box, and click on [Next] button.



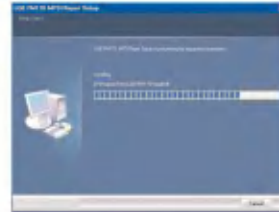
5. Select the installation path, and click on [Next] button.



Installing Software



6. Enter name into new folder or select one from the existing folder list.
Click [next] to continue.

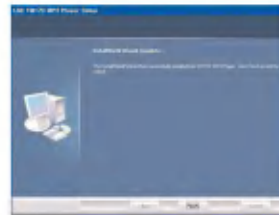


8. After finishing the installation, click on [Finish] button.



You may need to restart the computer, depending on your system environment.

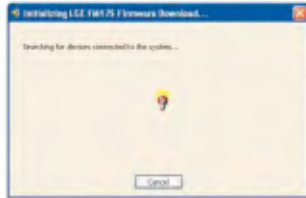
7. Click on [Install] button to start installation.



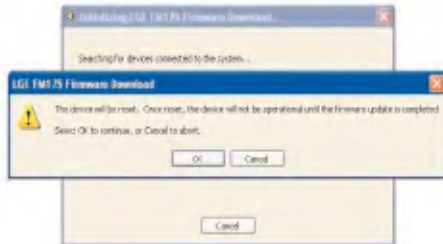
Installing Software



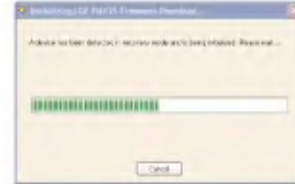
9. Connect the MP3 player to a USB port on your computer.
 10. Select Start > All Programs>LGE FM17S or LGE FM17X MP3 Player > Firmware Download
- Make sure your connection is solid while updating. It may result in the data loss or damage to the player.



11. Select [OK] or [Cancel] button
- If you press the [OK] button before the firmware updating, it will be started initialization . Otherwise, press the cancel button to abort .

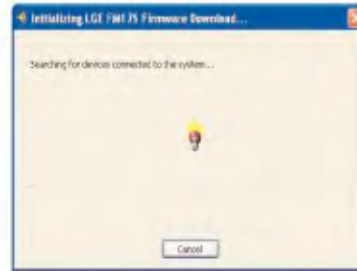


12. When you press the [OK] button on the display,it will be process initialization.



Note

Do not disconnect the USB cable from pc during the update, the unit will not be operated.



Installing Software

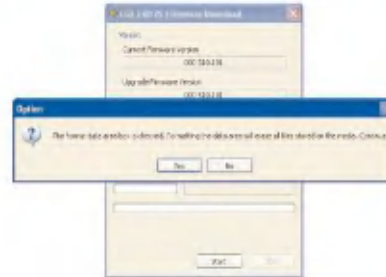


13. When the LGE MP3 Firmware download window appears, check the current firmware version. Do not check “format data area” to do not format. Click [Start] to run the firmware updater.

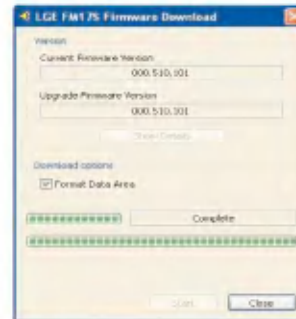
- ✓ We recommend the “format data area”.
- ✓ Back up your data before executing this option. otherwise, all files will be deleted from the player.



14. When you format the data, a message appears on display window . Click [Yes] to continue the firmware update



15. When the update finishes, click [Close] to finish the program.



16. Remove the USB connector by “safely removing hardware” Check the updated firmware version.

Installing Software



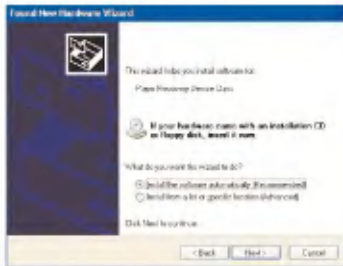
In case the player is not recognized automatically on Window XP or Windows 2000.

1. If the product is not recognized by the PC, an “Found New Hardware Wizard” window is opened.
Click the [Next] button.



2. You can select the a one of two .

In case the first, Check the “Install the software automatically”, and then, Click [Next] button.

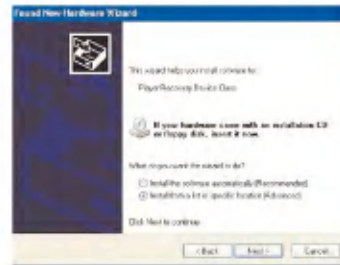


- 2.-1 You can see the device searching screen.

This case will install the device driver automatically



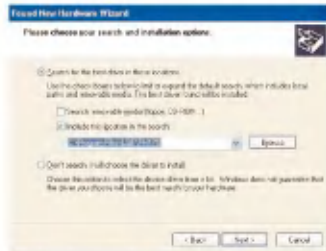
3. In case the second, check the “Install from a list or specific location”, and then click the [Next] button.



Installing Software



3-1. Select your firmware updated folder, and then Click the [Next] button.



5. Click the " Finish" button to finish installation



4. The device driver will be searched and installed

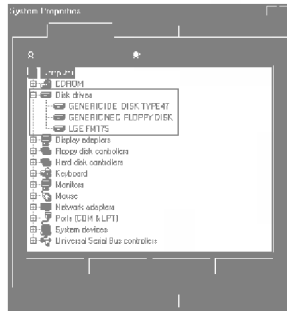


Installing Software



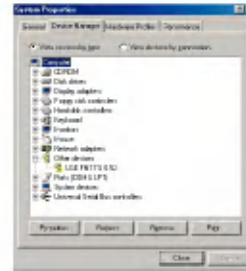
Installing Windows 98SE Device Driver

1. Insert the installation CD-ROM into you CD ROM drive.
2. When you run the firmware updater, the driver for windows 98SE will be also installed.
3. Reboot the PC, and connect the MP3 player to the USB port.
4. The installed device driver can be used as a portable disk in the Windows Explorer.
5. Check the installation status in System Properties as shown below.



In case the player is not recognized automatically on Win98SE.

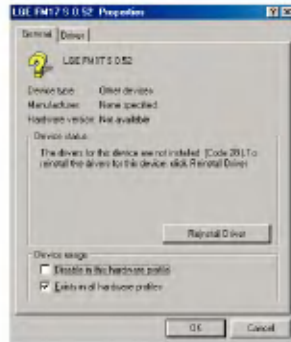
1. Connect the player to PC.
2. Select the LGE FM 17S or FM 17X in the system properties and click [Properties].



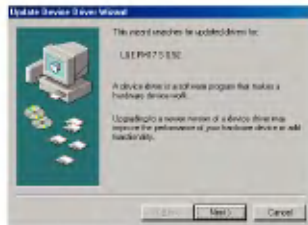
Installing Software



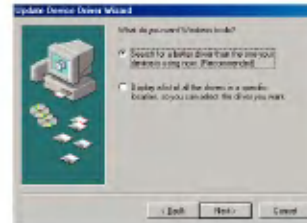
3. Click the [Reinstall Driver].



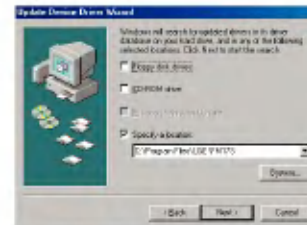
4. Update Device Driver Wizard appears. Click [Next].



5. Select the Search for the best driver for your device and click [Next].



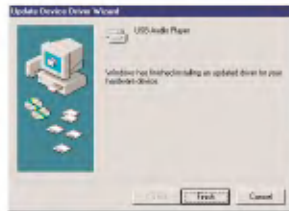
6. Locate the folder where the installation files are stored and click [Next].



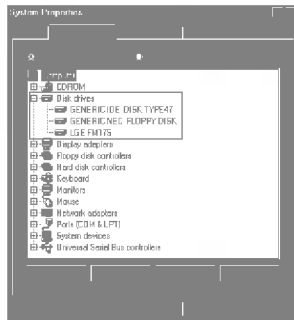
Installing Software



- When the installation is complete, click [Finish].



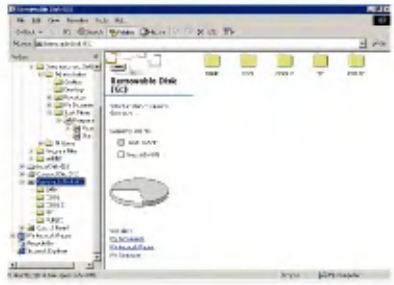
- The installed device driver can be used as a removable storage disk in the Windows Explorer.
- Check the installation status in System Properties as shown below.





Using the removable storage device

1. Connect one end of the USB cable to the USB port of the PC and the other to the USB port of the player.
 - ✓ Check whether both ends of the cable are correctly plugged in.
2. Check whether a new drive has been added in the Windows Explorer in the PC.
 - ✓ The driver name may differ depending on the OS.
3. Drag the file you want to copy to the removable disk.



- ✓ Disconnecting the USB cable while the file is being copied may cause malfunctioning of the player.

Upgrading Firmware



1. Check the model number at the company web site, and download the latest version.
 - <http://www.lge.com> > Support > Download > Software
2. Decompress the downloaded files. Then, setup file will be displayed.
3. Click setup file to start the Install shield wizard.

Installation and connection



Battery Info

This product dose not come with an AC adapter.

- Playback time: Max 18 hrs (In the case of MP3 128Kbps/44.1KHz, EQ FLAT, Volume 15 and alkaline battery)
- When the battery is almost used up,  icon will appear.
- When the battery is at a certain level,  icon will be displayed for two seconds and the player will be turned off.

Inserting battery

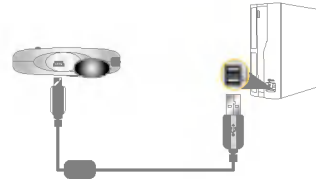
1. Open the battery cover by pull out it .
2. Insert one AAA-type battery with +/- aligned.
3. Close the battery cover.

Notice

- ✓ Remove battery when not used for long.
- ✓ When battery leaked, clean the chamber and replace it with new one.

Connecting the player to the PC

1. Connect one end of the USB cable to the USB port of the PC and the other to the USB port of the player.
 - Check whether both ends are correctly plugged in.



2. When the cable is connected, the following will be displayed on the LCD



3. In case of a correct connection, the  icon will be displayed on the task bar of the PC.

Note


The icon shapes on the task bar may differ depending on the operating environment of the PC.

Installation and connection



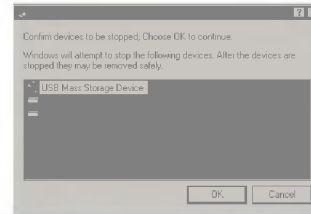
Disconnecting the player from the PC

This feature is to safely remove the player from the PC after uploading or downloading the files.

1. Double-click on Remove Hardware  icon on the task bar of the PC.
2. Click on [Stop] button when the window appears.



3. Click on [OK] button.



4. After a message that the large-capacity USB storage can be safely removed is displayed, remove the player from the PC.

⤵ If the USB cable is disconnected while the player is connected to the PC to store or delete the file, the data may get lost.

Basic operation



Turning on/off the power

- Press ON/OFF (▶/||) button for more than 1 second to turn on, and repeat it to turn off for more than 3 seconds.






Note

It may take time to load upon rebuilding.




Lock feature

This feature is to lock all feature buttons to prevent malfunctioning of the player.

1. Push  button in arrow directions to lock the player.
 - Upon locked status,  will be displayed on the LCD. Upon pressing of each button,  will appear for two seconds and disappear.
2. Push  button to the opposite direction of the arrow key and unlock the device.
 -  icon will appear and then disappear.

Volume control

- Control the volume by moving the volume control button to the direction of .
 - The volume level can be adjusted by 31 steps. (Min:00 ~ Max:30)
 - Pressing and holding the button will increase or decrease the volume gradually.
 - The factory-default setting for volume level is 15. If you leave the display for three seconds, the Volume will disappear.

Note

Volume automatically resets to 21 when restarted if your player's volume level has been set to higher than 21.



Home menu screen

1. Press and hold Menu (**M**) button to open home menu.

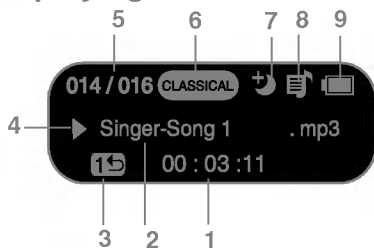


2. Push Volume \diamond button to select the mode.
3. Press Menu (**M**) button to display the selected mode.
 - The initial screen consists of total four modes.
 - Home menu appears if Menu (**M**) button is pressed for longer than 2 seconds during Play / Pause mode.

Playing music files



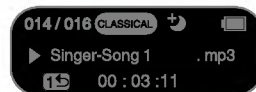
Music playing screen




1. Playback time (upon playing)
2. Song Information
3. Play mode display
4. Play/Pause display
5. File number/ Total file number
6. EQ
7. Sleep Mode
8. Playlist display
9. Battery status

Note

- When you push the volume  button, the volume icon  will appear on the display instead of the play time.
- The icon will disappear after 3 seconds



Play

1. Press and hold Menu (M) button to open home menu.
2. Push Volume  button to select the <<Music>> mode.



3. Press Menu (M) button shortly to open Music browser.



4. Press PLAY/PAUSE  or Menu (M) or button to play the music files.

Playing music files



Pause

1. Press PLAY/PAUSE ►/|| button once to pause while playing.
 - Even in Pause status, song information can be displayed.
2. Press PLAY/PAUSE ►/|| button again to resume playing.

Speed search of the play

- Push REW/FF < > button for two seconds or longer to fast search while the playing back.
- You may play a song by jumping to a particular point.

To search the next or previous music file

1. Push FF > button shortly to search the next music file.
2. In playing mode, press REW< button, the music will goback to the previous if the music is playing within 5 seconds; and the music will be restart if the music is playing after 5 seconds.

Playing the music files of browser

The user can easily search or play files using the browser.

1. Press Menu (M) button shortly in the << Music >> mode and then, the browser screen will appear.

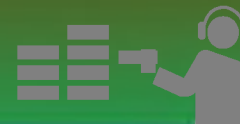
🎵 LG SONG 1

✓ Push the REW< button in the left direction it will move to the higher folder.

✓ You can resume to the play back screen or played screen by pressing REW< button in the highest folder state.

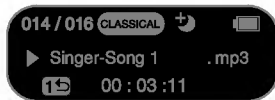
📁 LG SONG/

Playing music files



Note

- **Maximum number of files to play**
 - You can play up to 480 files.
 - **Maximum number of folders to be created**
 - You can create up to 50 folders.
 - When the files or folders exceed the above limit, the file or folder exceeding the limit don't appear in the list.
2. Go to the item using Volume \updownarrow button in the browser screen, and press Menu (M) or PLAY/ PAUSE (▶/||).
- Selected song will be playing.



3. Press Menu (M) button for two seconds or longer to go to Home menu.

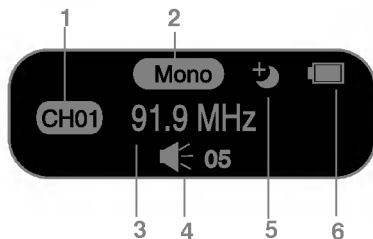
File error

When you select a file which cannot be played, the following message will be displayed.



FM radio reception (Optional)

FM radio reception screen



1. Channel display (only in Preset mode)
2. Mono/Stereo display
3. FM radio frequency display
4. Volume Information
5. Sleep mode
6. Battery status

Listening to the FM radio



1. Press Menu (M) button to select [Radio] mode.



2. Press Menu (M) button to display the FM radio reception screen.



Preset/Non Preset Mode

1. Press Menu (M) button shortly while listening to the radio.
 - Preset mode is set.
 - Preset mode: When the existing radio channels are already set, it is called 'preset mode'.
 -  display appears.
2. Shortly press the Menu (M) button once again
 - Non-Preset mode is set.
 - Non-Preset mode: When the existing radio channels are not already set, it is called 'Non-preset mode'.
 -  display disappears.

FM radio reception (Optional)



Searching the FM radio stations

Manually searching the FM radio stations

1. In Non-Preset mode, shortly pushing REW/FF < > button increase/decrease the frequencies by 0.05 MHz.
2. In present mode, press < > button to listen to the previous or next station

Automatically searching the broadcasting stations

1. In Non-Preset mode, push REW/FF < > button for longer than 2 seconds to find the available radio station automatically.
2. To cancel the automatic search, push REW < button during Forward search and push FF > button during Rewind search.

Note

- Reception may be weak in some areas.
- Earphones function as an antenna. Earphones of other manufacturers do not guarantee optimal performance.

Storing FM radio frequencies

Automatic channel setting

1. Press P.LIST button for two seconds or longer to search and store radio channels in Non-Preset mode.


-  icon will appear and the channels will be stored.

Note

In an area with weak reception, the detected channels may be less than 20.

2. Press REW < button to stop automatic search.

Manually channel setting

1. In a Non-Preset mode, select a frequency to store as a Preset channel and press P.LIST button.
2. When a browser screen appears, select a channel with Volume  button and press Menu (M) button shortly.

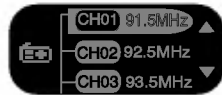


FM radio reception (Optional)

- When a message appears that "Save as a CH", select Yes and shortly press the Menu (M) button.




- Stored channels can be scanned in a browser screen.



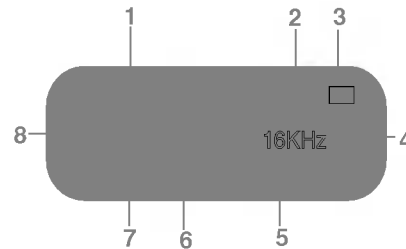
Deleting channels

- While listening to the radio, press P.LIST button shortly to delete the current channel.
 - This operation must press P .LIST button in the Preset mode.
- When a message appears that "Delete this CH", select Yes and shortly press the Menu (M) button.



- When a channel is deleted, we can still receive other channels. When there is no channel on the left, a  icon appears and then disappears.

Recording screen



- Recording Status Display
- Sleep mode
- Battery status
- Bit Rate
- Remain Time
- Elapsed Time
- Recorded file name display
- Recording Mark

FM radio reception (Optional)

Recording FM radio broadcasting

1. Press FM REC button to start recording while listening to the radio.



-  icon will appear.
- Files will be stored in FM folder in a format 'F001.WAV'.


Note

If the memory is not enough to record, [Memory full not record] will appear. In this case, delete the files and secure the memory space.



2. Press PLAY/PAUSE ►/|| button to pause recording.



-  icon will appear.
3. By pressing PLAY/PAUSE ►/|| button again, the user can resume recording.

4. Press Menu (M) button shortly to end recording.



-  icon will appear and then disappear.

Listening to the radio recorded file

1. Press and hold the Menu (M) button to select the music mode.
 2. Press Menu (M) button shortly while in music mode.
 3. Choose a recording file you want to hear and shortly press the Menu (M),PLAY/PAUSE ►/|| or push FF > button.
- Files will be stored in FM folder in a format 'F001.WAV'.

Playlist Function




Add to the playlist

1. Press and hold Menu (M) button to open home menu.
2. Push Volume $\hat{\vee}$ button to select the <<Music>> mode.



3. Press Menu (M) button shortly to display the sub file list.

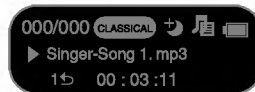


4. Push Volume $\hat{\vee}$ button to select the desired file.
5. Press the P.LIST button shortly to add the playlist.
- Icon of selected file will change like .



Note

When you press the P.LIST button during playback, the song is added to the playlist.



Playlist File full

When the file or folders exceed the above limit, "Playlist is Full !" message appear on the display window

 You can create up to 50 lists.

Entering to the playlist mode

You can enter to the playlist directly

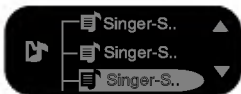
1. Press and hold Menu (M) button to open home menu.
2. Push Volume $\hat{\vee}$ button to select the <<Playlist>> mode.



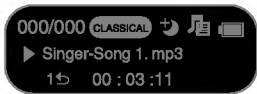
3. Press Menu (M) button shortly to display the sub file list.

Playlist Function

- The list shows selected songs while playing back.



4. Press the Menu(M) button shortly, and then the song is played

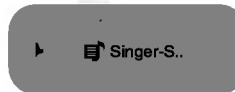


Delete one playlist

1. Select the "playlist file".



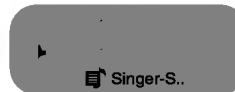
2. Press the P.LIST button shortly on the playlist mode, then the file is deleted.



3. When you press the P.LIST button shortly while playing back, the song is deleted in the playlist.

Delete all playlist

1. Select the "playlist file".



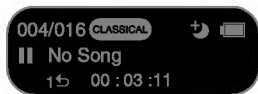
2. Press and hold the P.LIST button on the playlist mode, then the all files are deleted.



Playlist Function

Note

When the last remained file delete while playing back, " No Song " will appear while stopping .



Delete or add During playing- back

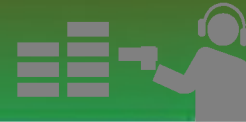
- If you want to add a song while in the playlist playing back, you can add the song by pressing P.LIST button .
- You can delete also the song while playing back in the playlist by pressing the P.LIST button once again.

Playing mode on the playlist

Playmode function is operated on the playlist as below.

Play All	Plays all songs of playlist
Play Folder	
Repeat All	Repeats all songs of playlist.
Repeat Folder	
Repeat One	Repeats one song of playlist.
Random Repeat All	Randomly repeats all songs of playlist
Random Repeat Folder	
Random All	Randomly Plays all songs of playlist
Random Folder	

Setting lower feature



Setup mode screen

Play Mode	EQ	Display Setting	Radio	Recording Quality	Time	General
Play All	AUTO EQ	ID3 Tag	Mode	16KHz	Auto Power off	Fade In
Repeat All	FLAT	Contrast	Region Setting	22.05KHz	Sleep Reservation	Initialize Settings
Random Repeat All	XTS-PRO	Backlight Setting		32KHz		System Info
Random All	ROCK	Language				
Random Folder	POP					
Repeat One	JAZZ					
Play Folder	CLASSICAL					
Repeat Folder	DANCE					
Random Repeat Folder	HIPHOP/RAP					
	R&B/SOUL					
	LIVE					

Setting lower feature



Operating Setup feature

1. Press Menu (M) button to open home menu.
2. Push Volume \updownarrow button to select the, <<Settings >> mode.



3. Press Menu(M) button shortly to display the sub menu.
 - Push REW/FF < > button to navigate between menus.



- Press Menu(M) button to display the lower feature setting screen.
- Push REW < button to go to the upper menu without setting the feature in the sub menu.
- Press Menu(M) button for two seconds or longer to go to Home menu.
- Press Menu(M) button shortly to go to the upper menu after setting the feature.

Play Mode

You can select the play mode you want.

Play All	Plays all songs
Play Folder	
Repeat All	Repeats all songs
Repeat Folder	
Repeat One	Repeats one song
Random Repeat All	Randomly repeats all songs
Random Repeat Folder	
Random All	Randomly Plays all songs
Random Folder	

EQ (Sound effect)

EQ: The user can set the sound effect.



AUTO EQ, FLAT, XTS-PRO, ROCK, POP, JAZZ, CLASSICAL, DANCE, HIP HOP/RAP, R&B/SOUL, LIVE

- FLAT : Basic sound quality with no sound effect.

Setting lower feature

- XTS-PRO : XTS -PRO embodies the best of the sound quality after analysing the features of LG earphone which is supplied with bundle and you can enjoy with the best of the sound quality that is suited for the earphone supplied
- ROCK : Strong but smooth sound.
- POP : Realistic sound with enhanced mid-range frequency.
- JAZZ : Sweet and feeble sound.
- CLASSICAL : Detailed sound with enhanced midrange frequency.
- DANCE : well-balanced sound between high and low frequencies
- HIP HOP/RAP : Sound with enhanced low and high frequency
- R&B/SOUL : Detailed sound with enhanced high frequency
- LIVE : Realistic sound with enhanced mid-range and high frequency

Display Setting



ID3 Tag: Displays information of the music file.

- The user can select [On] or [Off].
- In case the user selects [On], the artist and the title of the ID3 Tag will be displayed

Contrast: The user can select the brightness of the lighting.

- The user can set between 0 and 9.

Backlight Setting: The user can set the lighting time.

- The user can select 5 Sec, 10 Sec, 30 Sec, 1 MIN, or On.

Language: The user can set the language.

English, 中文 (繁體), Español, Português, Français, Deutsch, Русский, Italiano, Svenska, Suomi, Norsk, Dansk, Nederlands, Polski, Magyar, Українська

- Select Home > Settings > Display Setting > Language to change the language setting.

Radio (Option)



Mode : The user can set the Mode.

- The user can select [Stereo] or [Mono].

Region Setting : The user can set the area.

- The user can select [Japan] or [Others]

Setting lower feature



Recording Quality



Recording Quality: The user can set the quality of the recorded file.

- The user can set 16KHz, 22.05KHz, up to 32KHz.

Time



Auto Power Off: The player will be automatically turned off when the user does not use the function for a certain time while the player is not playing or recording a file.

- The user can select Off, 30 SEC, 1 MIN, 5 MIN, or 10MIN.

Note

The Auto Power Off feature does not function in the radio mode.

Sleep Reservation: When the defined time passes, the player will be automatically turned off.

- The user can select Off, 10 Min, 30 Min, 60 Min, or 120 Min.

Note

- If the user sets the sleep reservation, the player will automatically store files and turn off at the reserved time.
- After the player is turned off at the reserved time, the sleep reservation will be automatically cancelled.

General



Fade In: The user can gradually increase the volume to protect ears.

- The user can select [On] or [Off].

Initialize Settings: The user can initialize the setting of the player.

- The user can select Yes or No.

System Info : The user can check product information.

- The firmware version, the free memory space, and the total memory capacity are displayed.

Setting lower features



Running Recovery

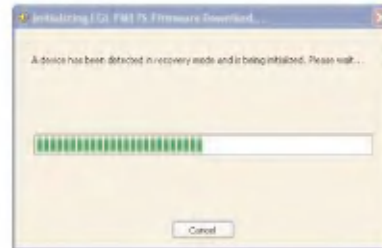
- ✓ Running a recovery will result in a total loss of data. Make sure to always back up important data. We do not take any responsibilities for data loss. Remove the battery to reset the system for the following happens.

Run a recovery at the same symptoms since then.

- PC and player is not recognized properly
 - Text appears broken and somewhat unreadable on screen.
 - Player does not work
 - You cannot download or upload files
1. Select Start > All Programs > LGE FM17S or LGE FM17X MP3 Player > Firmware download.
 2. When the screen below appears, connect the MP3 player to the USB port of the PC while pressing the PLAY/PAUSE (▶/||) button.



3. Release the PLAY/PAUSE (▶/||) button when the device is recognized properly as seen in the progress bar completion status.



4. The screen appears to firware download



Setting lower feature



5. When the LGE MP3 Firmware download window appears, check the current firmware version.
Do not check "format data area" to do not format.
Click [Start] to run the firmware updater.

- ✓ We recommend the "format data area".
- ✓ Back up your data before executing this option. otherwise, all files will be deleted from the player.



6. When you format the data, a message appears on display window .
Click [Yes] to continue the firmware update



7. When the update finishes, click [Close] to finish the program.
✓ Do not disconnect device during update.



8. Remove the USB connector by "safely removing hardware"

Using the application program



LG Media Center

The LG Media Center program is an integrated data management program development for users to more conveniently use the Flash MP3 player.



Features of the LG Media Center

- With the Media Library, the user can efficiently manage music files and download them to the MP3 player.
- Downloaded files are stored in a folder hierarchically. Music > Artist > *.MP3
- You can create folder (50 folders maximum).
- To disable folder hierarchy, select No Hierarchy in the Synchronization > Enable hierarchy menu item. Music > *.MP3

Auto Firmware updating

Connect the player to the PC where the LG Media Center is installed to download a new version of firmware.

Note

Functions only in the Internet-connected PC.

1. Connect one end of the USB cable to the USB port of the PC with the LG Media Center installed and the other to the USB port of the player.
2. Check whether a new drive has been added in the Windows Explorer in the PC.
3. The LG Media Center will compare the firmware versions of the player and the server. If it detects a new firmware version, it asks the user whether to update the version.
4. Check the current firmware version, when the LGE MP3 Firmware download window appears.
5. If you want to format, check 'Format data area' in the download option. (Refer to the page 18)
 - ✓ All files will be deleted from the player. Please back up your data before executing this option.
 - We recommend the "format data area".
6. Click [Start] to run the firmware updater.
 - ✓ Make sure your connection is solid while updating. It may result in the data loss or damage to the player.

Using the application program



7. When the update finishes, remove the USB connector by 'safely removing hardware'.
- 8 Turn on the MP3 player, and check the updated version of firmware.

View the manual

PDF document The user needs the Adobe Acrobat Reader to read the manual.

Installation of the Adobe Acrobat Reader

Click on Acrobat Reader for installation.

- Read the user manual.

Troubleshooting



Q : The player is not turned on.

A :Check whether the battery is remaining.

Q : The screen is blur.

A :Avoid direct sun rays and adjust the brightness.

A :Check the LCD brightness.

Q : The button does not function.

A :Check whether the Hold function is active.

Q : The noise is severe during listening to the radio, and the reception is poor.

A :As the earphones function as an antenna, make sure it has any damage.

A :Change the directions of the player and the earphones gradually.

Q : After the firmware is updated, the player is not normally functioning.

A :Back up the data, and format the player.

Q : Sometimes files get downloaded but sometimes they don't.

A :Make sure the USB port is operational.

Q : Downloaded file or folder does not appear.

A : The maximum number of files or folder this player can play are 480 and 50 respectively. The file or folder exceeding the limit don't appear in the list. Delete some music files or folders to see the files which are not previously listed.

Q : Error occurs during FW download and Auto FW upgrade of LG Media Center, and MP3 player does not work after finishing the operation FW download and Auto FW upgrade of LG Media Center.

A : Connect the MP3 player to the USB port of the PC while pressing the PLAY/PAUSE button, and run FW download program. And so run Recovery. (however, you should press and hold the PLAY/PAUSE button until the initialized progressive bar of FW download program is finished.) Please make reference to the page 43 about the Recovery.

Specifications



Memory	Capacity	256MB / 512MB / 1GB
	File system	FAT12 / FAT16 / FAT32
PC	OS for MP3 Player Device	Win98SE / ME / 2000 / XP
	Interface	USB2.0 Full Speed
General specifications	Dimensions	57(W) X 47(H) X 17(D)
	Weight	23.5g (without battery) / *Depends on the product model.
	Operating temperature	-5 °C + 45 °C
Audio	Frequency response	20Hz ~ 20kHz
	Signal-to-noise ratio	90dB
	Channel separation	33dB (1kHz)
	Maximum output	7.5mW + 7.5mW
	Frequency range	76.0~108.0MHz
FM radio (Option)	Signal-to-noise ratio	38dB (Mono)
	Channel separation	25dB (1kHz)
	Antenna	Earphones antenna
Power supply	Battery	AAA-sized battery (DC 1.5V)
Playback time	Maximum	18 hours (for 128Kbps/44.1 KHz, EQ FLAT, Vol 15)
Files	Audio	MP3 / WMA / WAV
Display	Display	Mono (Negative)

Specifications



Supported File Spec

MP3 Decoder

- Support MP3 decoding including Variable Bit Rate(VBR)

- O : Support both Stereo and Mono
- O(s) : Only Stereo
- O(m) : Only Mono

MP3 Decoder

kbps/kHz	MPEG 1 layer 3			MPEG2 layer3			MPEG2.5		
	44.1	48	32	22.05	24	16	11.025	12	8
8				O	O	O	O	O	O
16				O	O	O	O	O	O
24				O	O	O	O	O	O
32	O	O	O	O	O	O	O	O	O
40	O	O	O	O	O	O	O	O	O
48	O	O	O	O	O	O	O	O	O
56	O	O	O	O	O	O	O	O	O
64	O	O	O	O	O	O	O	O	O
80	O	O	O	O	O	O			
96	O	O	O	O	O	O			
112	O	O	O	O	O	O			
128	O	O	O	O	O	O			
144				O	O	O			
160	O	O	O	O	O	O			
192	O	O	O						
224	O	O	O						
256	O	O	O						
320	O	O	O						

Specifications



kb/s /kHz	MPEG1 layer1			MPEG1 layer2		
	44,1	48	32	44,1	48	32
32				0	0	0
36	0	0	0			
40				0	0	0
56				0	0	0
64	0	0	0	0	0	0
80				0	0	0
96	0	0	0			
112				0	0	0
128	0	0	0	0	0	0
160	0	0	0	0	0	0
192	0	0	0	0	0	0
224	0	0	0	0	0	0
256	0	0	0	0	0	0
288	0	0	0			
320	0	0	0	0	0	0
352	0	0	0			
384	0	0	0	0	0	0
416	0	0	0			
448	0	0	0			

kbps/kHz	MPEG2 layer1			MPEG2 layer2		
	16	22,5	24	16	22,5	24
8				0	0	0
16				0	0	0
32	0	0	0	0	0	0
40				0	0	0
48	0	0	0	0	0	0
56	0	0	0	0	0	0
64	0	0	0	0	0	0
80	0	0	0	0	0	0
96	0	0	0	0	0	0
112	0	0	0	0	0	0
128	0	0	0	0	0	0
144	0	0	0	0	0	0
160	0	0	0	0	0	0
176	0	0	0			
192	0	0	0			
224	0	0	0			
256	0	0	0			

MP3 Encoder

- 44.1KHz (96Kbps,128Kbps,192Kbps) Spec

Specifications



WMA Decoder

- Ver 4x, 7, 8 (o) Ver 9 (●) (ASF not supported)

WMA DECODER							
kbits / kHz	48	44.1	32	22.05	16	11.025	8
320		● (s)					
256		● (s)					
192	● (s), (o) (s)	● (s), (o) (s)					
144	● (s), (o) (s)	● (s), (o) (s)					
128	● (s), (o) (s)	● (s), (o)					
96	● (s)	● (s), (o) (s)					
60	● (s)	● (s), (o) (s)	○ (s)				
44	● (s)	● (s), (o)	○ (s)				
40		○	● (s)				
44			○ (s)				
40			○ (s)				
36			○ (s)				
32		○	○	● (s)			
24			○ (s)	○ (s)			
20			○ (s)	○	○ (s)		
16				○ (s)	○		
12					○ (s)	○ (s)	○ (s)
10					○ (s)	○ (s)	○ (s)
8						○ (s)	○ (s)
6							○ (s)
5							○ (s)

WAV Decoder

WAV DECODER						
MS-ADPCM						
kbits / kHz	40	44.1	32	22.05	16	11.025
4	○	○	○	○	○	○
IMA-ADPCM						
4	○	○	○	○	○	○
PCM						
4	○	○	○	○	○	○
16	○ (m)	○	○	○	○	○
24	○ (m)	○ (m)	○ (m)	○ (m)	○ (m)	○ (m)

<http://www.lge.com>

Information related to the product is available at this site.

- By updating the firmware, the user can improve the performance of the product.

