


User's Guide



L245WP L245WPM

Make sure to read the **Important Precautions** before using the product.
Keep the User's Guide(CD) in an accessible place for future reference.

See the label attached on the product and give the information to your dealer when you ask for service.



This unit has been engineered and manufactured to ensure your personal safety, however improper use may result in potential electrical shock or fire hazards. In order to allow the proper operation of all safeguards incorporated in this display, observe the following basic rules for its installation, use, and servicing.

On Safety

Use only the power cord supplied with the unit. In case you use another power cord, make sure that it is certified by the applicable national standards if not being provided by the supplier. If the power cable is faulty in any way, please contact the manufacturer or the nearest authorized repair service provider for a replacement.

The power supply cord is used as the main disconnection device. Ensure that the socket-outlet is easily accessible after installation.

Operate the display only from a power source indicated in the specifications of this manual or listed on the display. If you are not sure what type of power supply you have in your home, consult with your dealer.

Overloaded AC outlets and extension cords are dangerous. So are frayed power cords and broken plugs. They may result in a shock or fire hazard. Call your service technician for replacement.

Do not Open the Display.

- There are no user serviceable components inside.
- There are Dangerous High Voltages inside, even when the power is OFF.
- Contact your dealer if the display is not operating properly.

To Avoid Personal Injury :

- Do not place the display on a sloping shelf unless properly secured.
- Use only a stand recommended by the manufacturer.

To Prevent Fire or Hazards:

- Always turn the display OFF if you leave the room for more than a short period of time. Never leave the display ON when leaving the house.
- Keep children from dropping or pushing objects into the display's cabinet openings. Some internal parts carry hazardous voltages.
- Do not add accessories that have not been designed for this display.
- During a lightning storm or when the display is to be left unattended for an extended period of time, unplug it from the wall outlet.

On Installation

Do not allow anything to rest upon or roll over the power cord, and do not place the display where the power cord is subject to damage.

Do not use this display near water such as near a bathtub, washbowl, kitchen sink, laundry tub, in a wet basement, or near a swimming pool.

Displays are provided with ventilation openings in the cabinet to allow the release of heat generated during operation. If these openings are blocked, built-up heat can cause failures which may result in a fire hazard. Therefore, NEVER:

- Block the bottom ventilation slots by placing the display on a bed, sofa, rug, etc.
- Place the display in a built-in enclosure unless proper ventilation is provided.
- Cover the openings with cloth or other material.
- Place the display near or over a radiator or heat source.

Do not rub or strike the Active Matrix LCD with anything hard as this may scratch, mar, or damage the Active Matrix LCD permanently.

Do not press the LCD screen with your finger for a long time as this may cause some afterimages.

Some dot defects may appear as Red, Green or Blue spots on the screen. However, this will have no impact or effect on the display performance.

If possible, use the recommended resolution to obtain the best image quality for your LCD display. If used under any mode except the recommended resolution, some scaled or processed images may appear on the screen. However, this is characteristic of the fixed-resolution LCD panel.

On Cleaning

- Unplug the display before cleaning the face of the display screen.
- Use a slightly damp (not wet) cloth. Do not use an aerosol directly on the display screen because over-spraying may cause electrical shock.

On Repacking

- Do not throw away the carton and packing materials. They make an ideal container in which to transport the unit. When shipping the unit to another location, repack it in its original material.

On Disposal

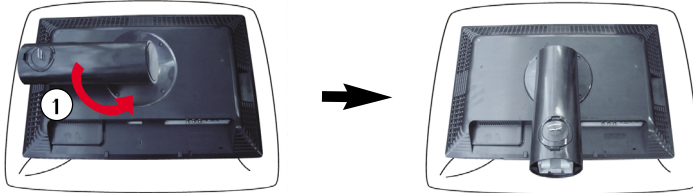
- The fluorescent lamp used in this product contains a small amount of mercury.
- Do not dispose of this product with general household waste.
Disposal of this product must be carried out in accordance to the regulations of your local authority.

Connecting the Display

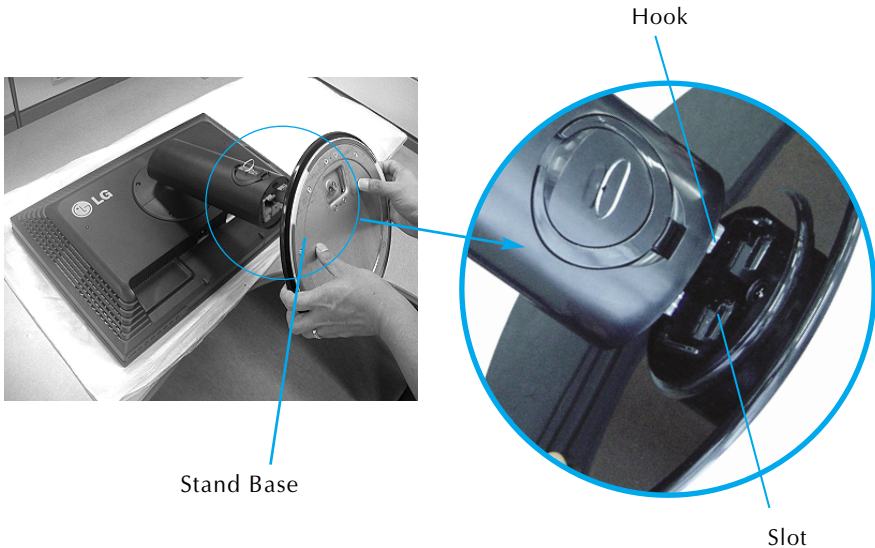
- Before setting up the monitor, ensure that the power to the monitor, the computer system, and other attached devices is turned off.

Connecting the stand base or Removing the stand base

1. Place the monitor with its front facing downward on a cushion or soft cloth.
2. Rotate the Stand Body as shown in figure ①.



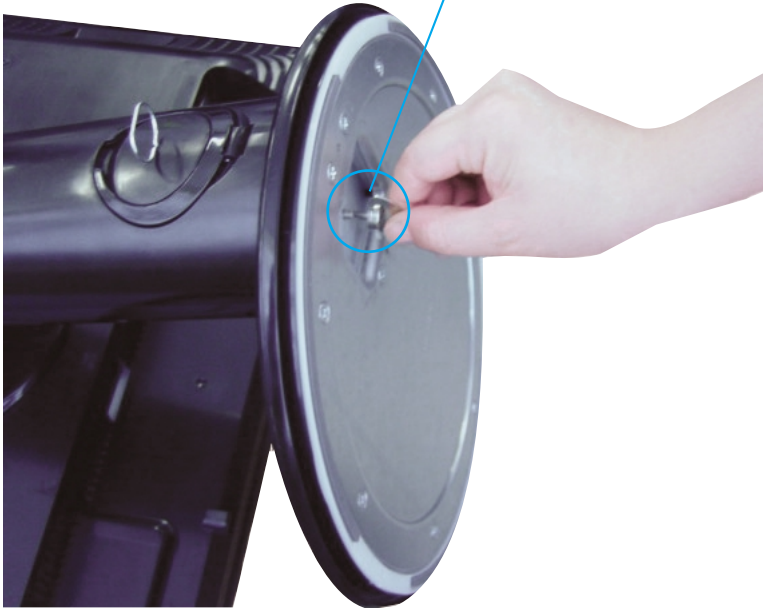
3. Align the hooks on the Stand Body with the matching slots in the Stand Base.
4. Insert the hooks into slots.



Warning : The tape and locking pin may only be removed from those monitors equipped with a standing base when the base is pulled up. Otherwise, you may be injured by the protruding sections of the stand.

5. Attach the monitor to the Stand Base by turning the screw to the right.

Screw : Turn the screw by using the screw handle.



6. Lift and turn the monitor to face towards the front after the connection is made to the female part of the cable you're attaching.
7. Take the screw out by turning to the left to separate the monitor and Stand Base.

Important

- This illustration depicts the general model of connection. Your monitor may differ from the items shown in the picture.
- Do not carry the product upside down holding only the stand base. The product may fall and get damaged or injure your foot.

Connecting the Display

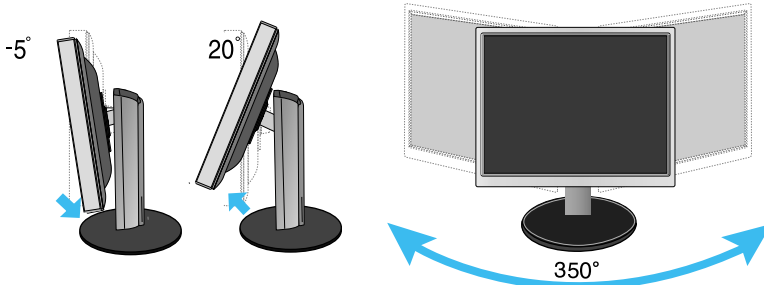
- Before setting up the monitor, ensure that the power to the monitor, the computer system, and other attached devices is turned off.

Positioning your display

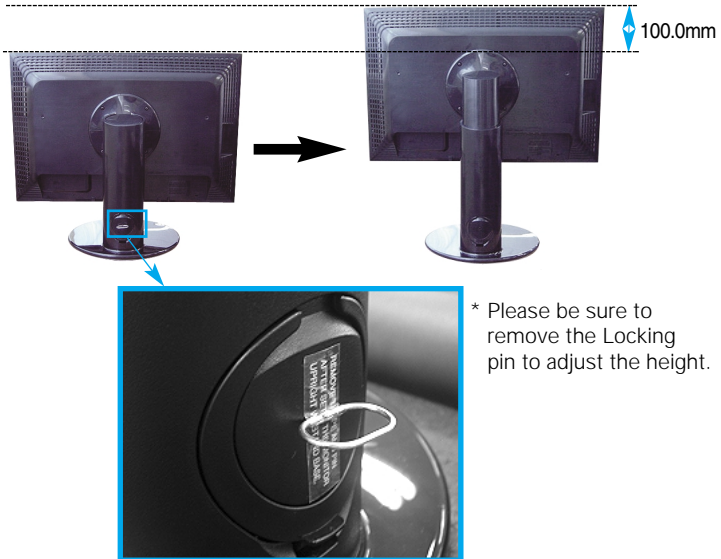
1. Adjust the position of the panel in various ways for maximum comfort.

■ Tilt Range : -5° ~ 20°

■ Swivel : 350°



■ Height Range : maximum 3.94 inch (100.0mm)



* Please be sure to remove the Locking pin to adjust the height.

Notice You do not need to replace the Locking pin after it is removed, to adjust its height.

Ergonomic

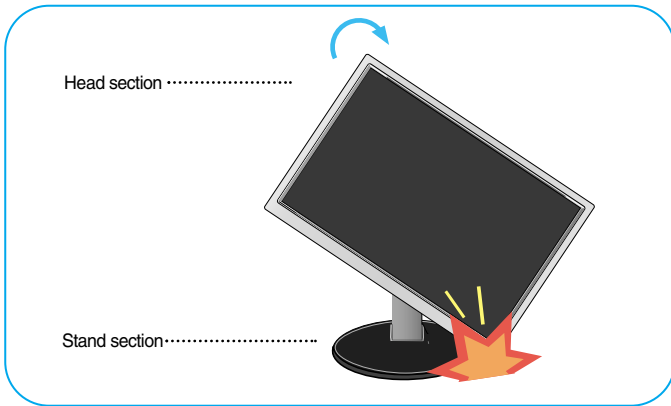
- It is recommended that in order to maintain an ergonomic and comfortable viewing position, the forward tilt angle of the monitor should not exceed 5 degrees.
- Slightly wipe stained spot on the exterior only with the cleansing cloths for the product exterior if there is stain or fingerprint on surface of the exterior. Do not wipe roughly when removing stain. Please be cautious of that excessive power may cause scratch or discoloration.

Using the Pivot function

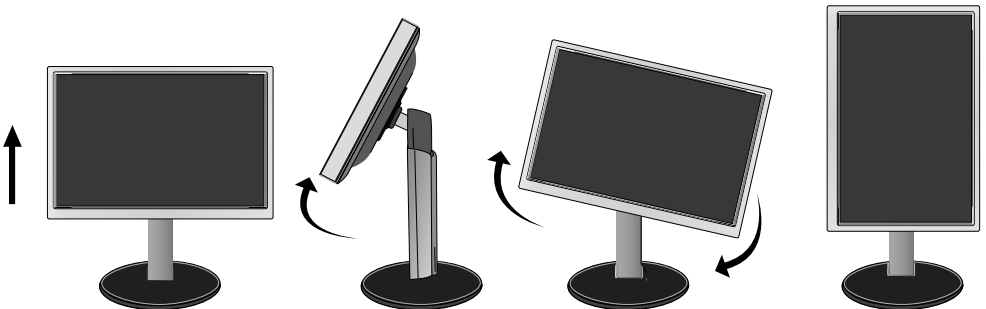
1. Lift the monitor to its highest height to utilize the Pivot function.

2. Landscape & Portrait : You can rotate the panel 90° clockwise.

Please be cautious and avoid contact between the monitor head and the Stand Base when rotating the screen to access the Pivot function. If the monitor head touches the Stand Base, then the Stand Base could crack.

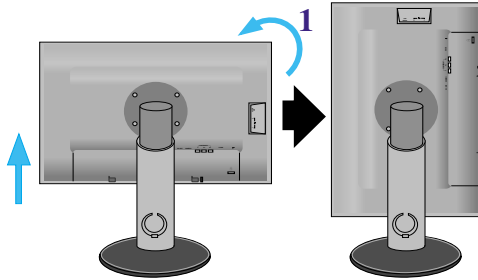


3. For detailed information, please refer to the Pivot Software CD provided.



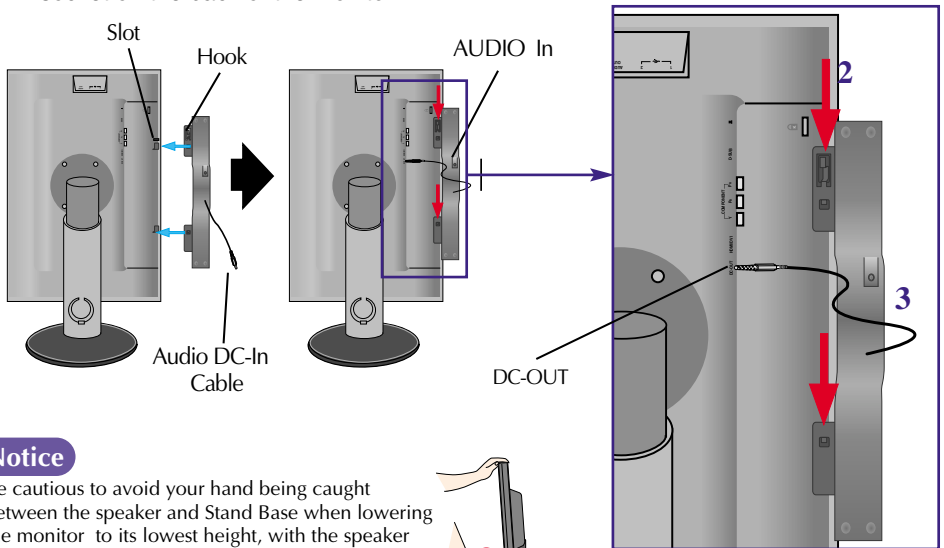
Connecting the speaker

1. Rotate the panel at an angle of 90 degrees as shown in the picture, after lifting the monitor to its highest height.



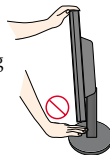
* Make sure the panel does not touch the floor when rotating.

2. Insert the projecting hook of the speaker in the direction of the monitor's back slot until you hear the clicking sound.
3. After connecting the speaker, connect the Audio DC-IN cable to the DC-OUT socket on the back of the monitor.



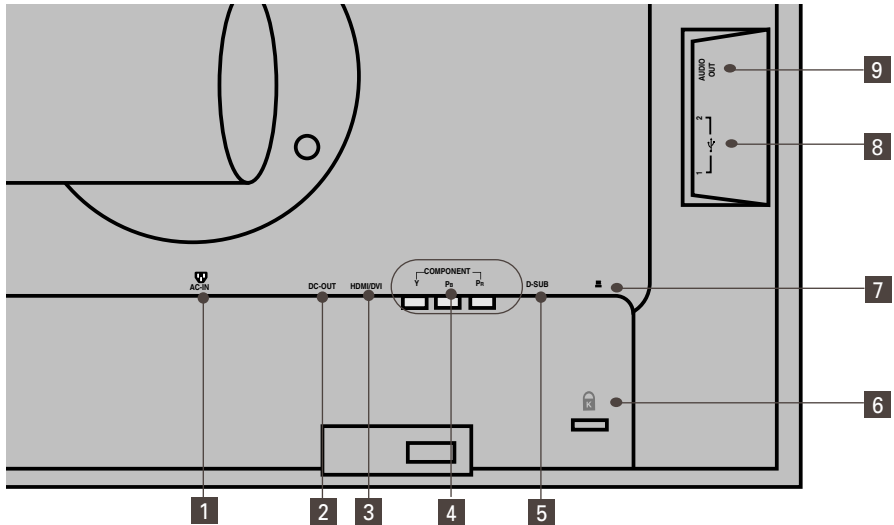
Notice

Be cautious to avoid your hand being caught between the speaker and Stand Base when lowering the monitor to its lowest height, with the speaker fully equipped.



4. Connect the audio cable to the AUDIO-IN terminal. When using HDMI, you can connect the monitor's to the AUDIO-OUT terminal. When using a PC or other component, simply connect to the appropriate female socket of the external instrument.

Rear View

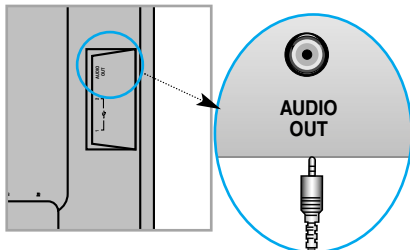


- 1 AC-IN Connector : Connect the Power Cord
- 2 DC-OUT Jack
- 3 HDMI/DVI Signal Connector
- 4 COMPONENT Input Terminal
- 5 D-SUB Analogue Signal Connector
- 6 Kensington Security Slot
- 7 USB UP stream Port(1EA)
- 8 USB DOWN stream Port(2EA)
- 9 Audio out Jack(Headset/Earphone/connecting terminal of the Speaker)

: You can use the AUDIO-OUT Jack by connecting earphones or a headset when using the HDMI configuration..

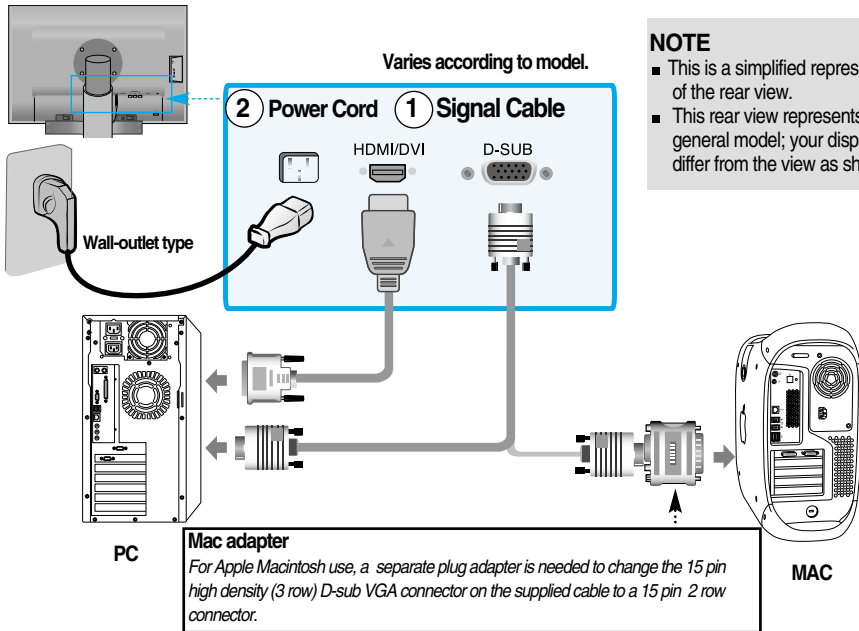
*AUDIO-OUT is only available with the HDMI input.
(You cannot use it with D-SUB, DVI or any other component.)

The Left Rear of the Monitor



■ ■ ■ When Connecting to your PC

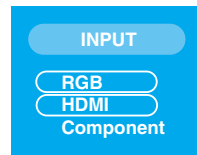
1. Place the monitor in a convenient, well-ventilated location near your computer.
To adjust height of your monitor, unlock the stand lock on top of the stand.
2. Connect the signal cable. When attached, tighten the thumbscrews to secure the connection. ①
3. Connect the power cord into a proper power outlet that is easily accessible and close to the display. ②



4. Press button on the front switch panel to turn the power on.
5. Press the **INPUT** button at the front side of the monitor.

INPUT → ▼▲ → OK/AUTO

- A** When connecting with a HDMI/DVI signal input cable.
- Select **HDMI** : HDMI/DVI digital signal.
- B** When connecting with a D-Sub signal cable.
- Select **RGB** : D-Sub analogue signal.



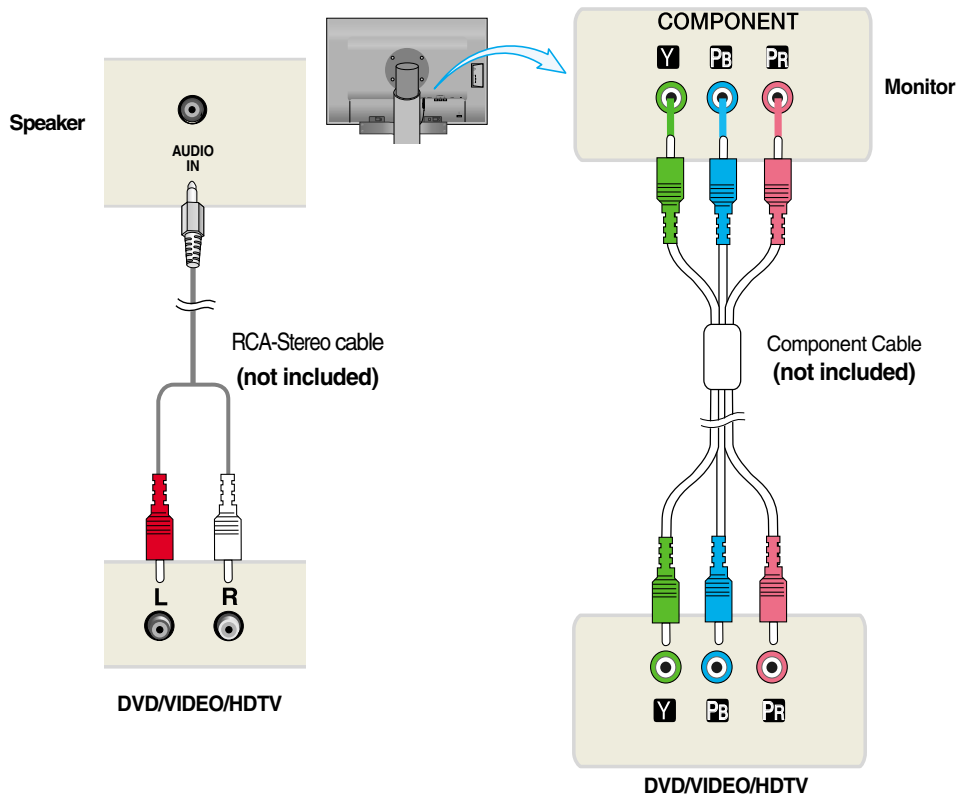
Note

- How to connect to two computers.
Connect the signal cables (HDMI/DVI and D-Sub) to each computer.
Press the **INPUT** button at the front side of the monitor.
- Directly connect to a grounded power outlet on the wall or a power bar with a ground wire.

■ ■ ■ When Watching DVD/Video/HDTV

● When connecting with a Component cable

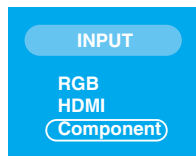
1. Connect the Component cables and RCA to Stereo cables properly.
Connect the terminals to the sockets of the same color.
2. Connect the power cord.



3. Press the **INPUT** button at the front side of the monitor.



- A** When connecting with a Component cable.
• Select **Component**.



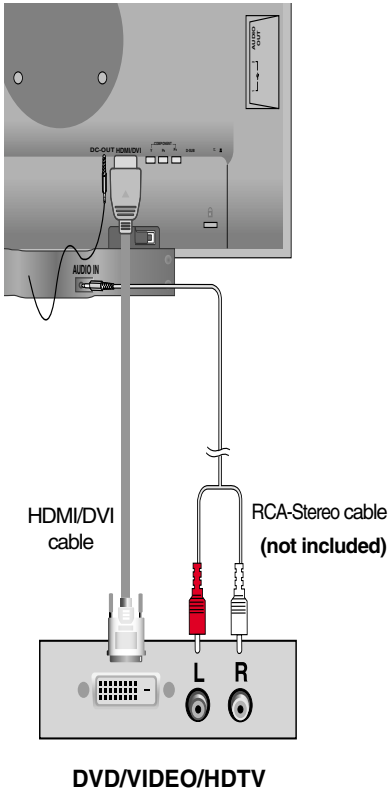
Connecting to External Devices

■ ■ ■ When Watching DVD/Video/HDTV

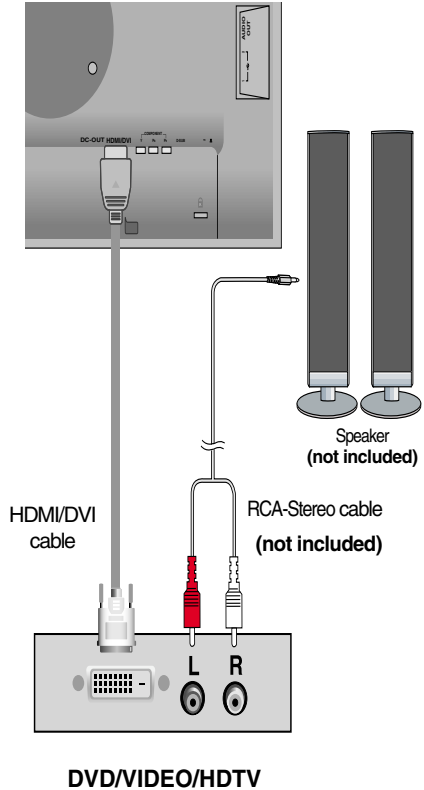
● When connecting with a HDMI/DVI cable

1. Connect the HDMI/DVI cables and RCA to Stereo cables properly.

■ L245WPM



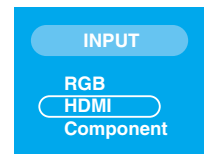
■ L245WP



2. Press the **INPUT** button at the front side of the monitor.



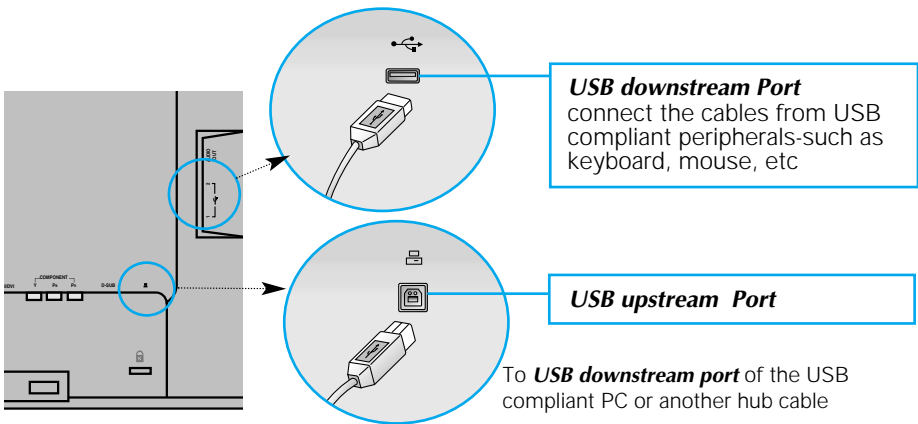
- A** When connecting with a HDMI/DVI cable.
- Select **HDMI**.



■ ■ ■ Connecting the USB(Universal Serial Bus) Cable

"USB (Universal Serial Bus)" is an innovation in connecting your different desktop peripherals conveniently to your computer. By using the USB, you will be able to connect your mouse, keyboard, and other peripherals to your display instead of having to connect them to your computer. This will give you greater flexibility in setting up your system. USB allows you to connect a chain of up to 120 devices on a single USB port; and you can "hot" plug (attach them while the computer is running) or unplug them while maintaining the Plug and the Plug auto detection and configuration. This display has an integrated BUS-powered USB hub, allowing up to 2 other USB devices to be attached it.

1. Connect the upstream port of the display to the downstream port of the USB compliant PC or another hub using the USB cable. (Computer must have a USB port)
2. Connect the USB compliant peripherals to the downstream ports of the display.



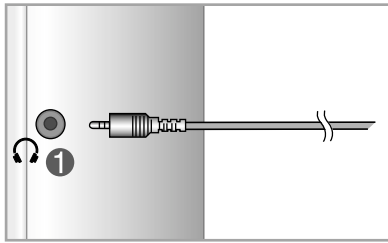
3. The monitor's USB terminal supports USB 2.0 and High Speed cables.

	High Speed	Full Speed	Low Speed
Data Rate	480Mbps	12Mbps	1.5Mbps
Power Consumption	2.5W (Max,each Port)	2.5W (Max,each Port)	2.5W (Max,each Port)

NOTE

- To activate the USB hub function, the display must be connected to a USB compliant PC(OS) or another hub with the USB cable(enclosed).
- When connecting the USB cable, check that the shape of the connector at the cable side matches the shape at the connecting side.
- Even if the display is in a power saving mode, USB compliant devices will function when they are connected the USB ports(both the upstream and downstream) of the display.

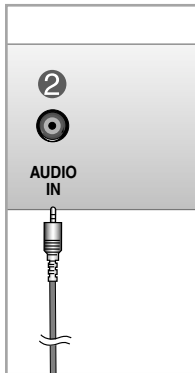
Side Jack



① Headphone/Earphone Input

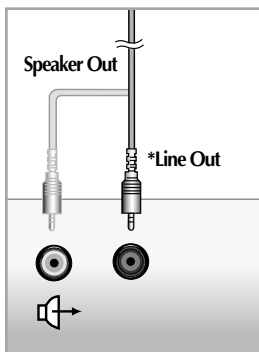
Automatically mutes the speaker volume when the headphones are plugged in.

Rear



② Audio Input

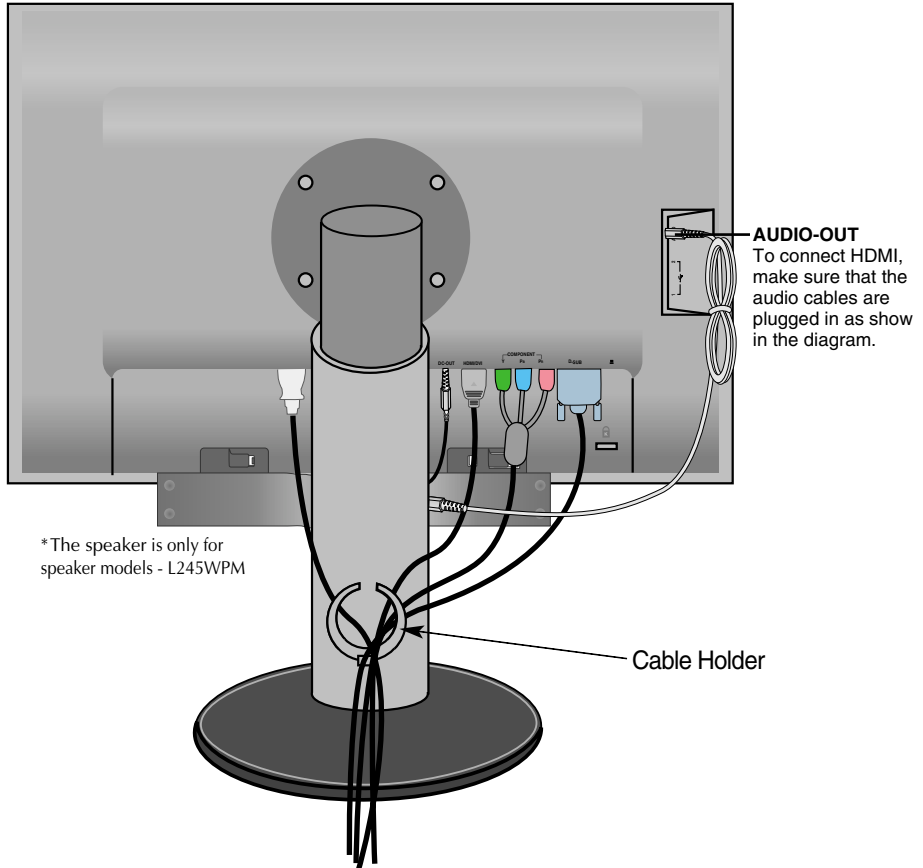
- To connect your PC, plug the cable into the sound card *Line Out on the PC.
- To connect your audio component, plug the cable into the external audio component.
- To connect HDMI, plug the cable into the "Audio-Out" of your monitor.



<Jack of the PC
sound card>

■ ■ ■ To arrange the cables

1. After connecting the cables neatly, arrange the cables to the **Cable Holder** as shown in the following figure.

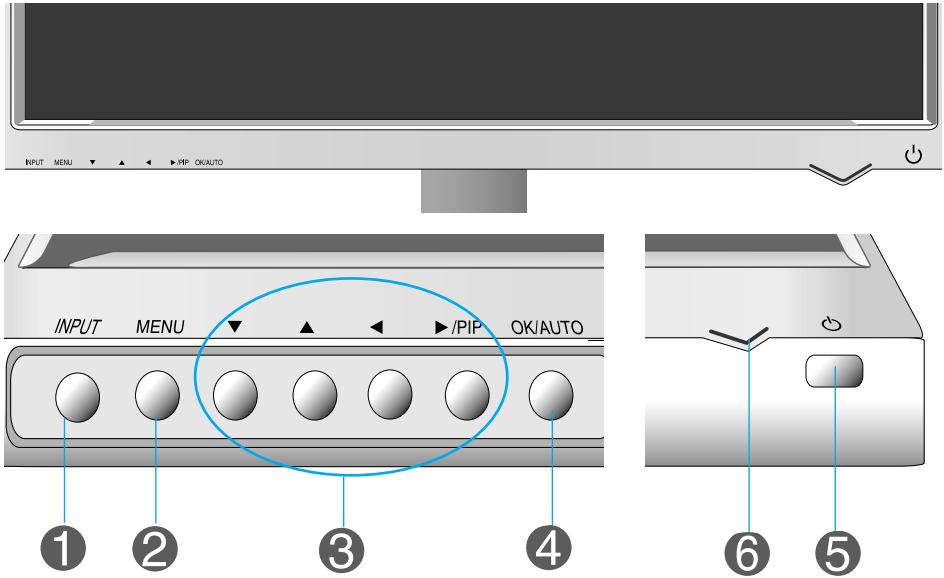


*The length of the cable which connects the monitor's AUDIO-OUT and the speaker's AUDIO-IN can be too long. It is used to connect the components at the appropriate distance when the AUDIO-IN terminal and the speaker are connected to the PC.

Notice

Be cautious to avoid the bumping the speaker against its head when removing a cable.

Front Panel Controls



1 INPUT Button

Select the input signal.

INPUT → ▼ ▲ → OK/AUTO

RGB : 15-pin D-SUB analogue signal
Component : DTV SET-TOP BOX, Video, DVD
HDMI/DVI : HDMI/DVI digital signal
DTV SET-TOP BOX, Video, DVD

INPUT

RGB
HDMI
Component

2 MENU Button

Use this button to enter or exit the On Screen Display.

Controls locked

Controls unlocked

Controls locked/Controls unlocked

This function allows you to lock the current control settings, so that they cannot be inadvertently changed. Press and hold the **MENU+▶ / PIP Button** for several seconds. The message "**Controls locked**" should appear.

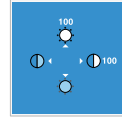
You can unlock the OSD controls at any time by pushing the **MENU+▶ / PIP Button** for several seconds. The message "**Controls unlocked**" should appear.

3 ▲▼, ◀▶ / PIP Button

Use this button to select an icon or adjust the setting in the OSD screen.

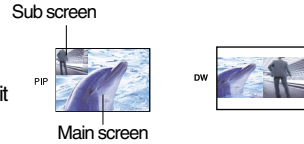
▲▼ Button

- Use this button to directly control brightness and contrast of the PC signal (RGB, HDMI/DVI).



▶ / PIP Button

- ▶ / PIP (Picture In Picture) Button
The size of the sub-screen can be changed to fit your needs Button is pressed.



4 OK/AUTO Button

Use this button to enter a selection in the On Screen Display.

AUTO IMAGE ADJUSTMENT

When adjusting your display settings, always press the **OK/AUTO** button before entering the On Screen Display(OSD). This will automatically adjust your display image to the ideal settings for the current screen resolution size (display mode).

Auto in progress

For optimal display
change resolution to 1920x1200

The best display mode is

- 24 inch monitor : **1920 x 1200@60Hz**

5 Power Button

Use this button to turn the display on or off.

6 Power Indicator

This Indicator lights up blue when the display operates normally(On Mode). If the display is in Sleep Mode (Energy Saving), this indicator color changes to amber.

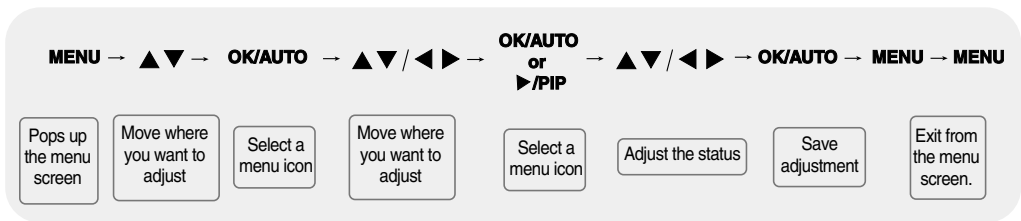
Screen Adjustment

Making adjustments to the image size, position and operating parameters of the display is quick and easy with the On Screen Display Control system. A short example is given below to familiarize you with the use of the controls. The following section is an outline of the available adjustments and selections you can make using the OSD.

NOTE





- Allow the display to stabilize for at least 30 minutes before making image adjustments.

To make adjustments in the On Screen Display, follow these steps:



- 1 Press the **MENU** Button, then the main menu of the OSD appears.
- 2 To access a control, use the ▼ ▲ Buttons.
- 3 When the icon you want becomes highlighted, press the **OK/AUTO** Button.
- 4 Use the ▼ ▲ ◀ ▶ Buttons to adjust the item to the desired level.
- 5 Accept the changes by pressing the **OK/AUTO** Button.
- 6 Exit the OSD by pressing the **MENU** Button.

OSD (On Screen Display) menu

Icon	Function Description
 PICTURE	Adjusting Screen Colour.
 SPECIAL	Selecting the options.
 SCREEN	Screen Adjustment.
 PIP/DW	Adjusting PIP/DW Mode (Multiple Screen) Functions.

NOTE



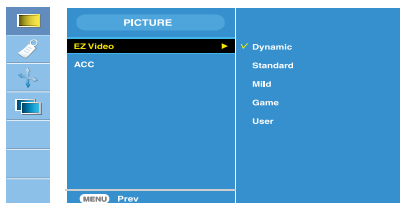
OSD(On Screen Display)

The OSD function enables you to adjust the screen status conveniently since it provides graphical presentation.



Adjusting Screen Colour

EZ Video



HDMI, Component input

The **EZ Video** function automatically adjusts the screen image quality depending on the AV usage environment.

- **Dynamic** : Select this option to display with a sharp image.
- **Standard** : The most general and natural screen display status.
- **Mild** : Select this option to display with a mild image.
- **Game** : Select this option to enjoy dynamic image when playing a game.
- **User** : Select this option to use the user-defined settings.



Contrast

To adjust the contrast of the screen.

Brightness

To adjust the brightness of the screen.

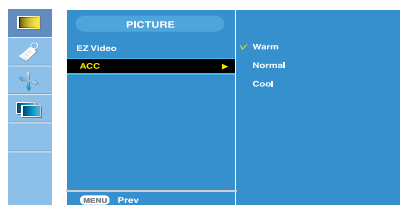
Color

To adjust the color to desired level.

Sharpness

To adjust the clearness of the screen.

ACC



HDMI, Component input

Selecting a factory setting colour set.

- **Warm** : Slightly reddish white.
- **Normal** : Slightly bluish white.
- **Cool** : Slightly purplish white.

NOTE

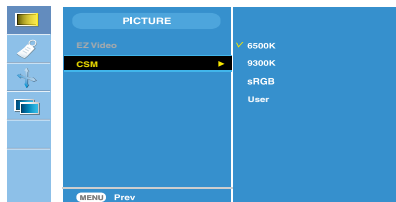


If the EZ video setting in the Picture menu is set to Dynamic, Standard, Mild or Game the subsequent menus will be automatically set.



Adjusting Screen Colour

CSM



PC only

• 6500K/9300K/sRGB

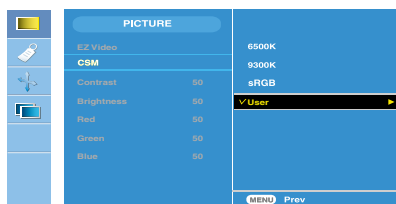
Selecting a factory setting colour set.

6500K: Slightly reddish white.

9300K: Slightly bluish white.

sRGB : Set the screen color to fit the SRGB standard color

- **User** : Select this option to use the user-defined settings.



Contrast

To adjust the contrast of the screen.

Brightness

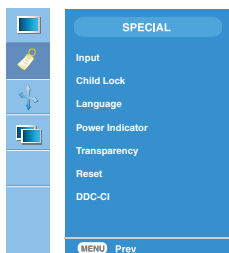
To adjust the brightness of the screen.

Red / Green / Blue

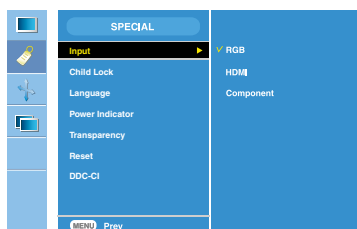
Set your own colour levels.



Selecting the options



Input



If you press the button once, the following Input Signal Window will appear. Select the signal type you want using the ▼▲ button.

Child lock

This feature can prevent unauthorized viewing.

In order to lock the OSD screen adjustment, set the **Child lock** tab to the 'On' position. In order to unlock it, do the following :

*Press and hold the MENU+▶ / PIP Button for several seconds. The message "**Controls locked**" should appear.

Language

To choose the language in which the control names are displayed.

Power Indicator

Use this function to set the power indicator on the front side of the product to **On** or **Off**.

Transparency

To adjust the transparency of the OSD menu screen.

Reset

Use this function to reset the product to the factory default. However, language selection will not be initialized.

DDC-CI

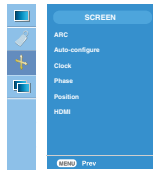
DDC/CI(Display Data Channel Command Interface) is communication protocol for communications between PC and monitor.

DDC/CI makes it possible to adjust and setup detailed functions on PC instead of the monitor OSD.

Monitor can be adjusted with PC by connecting communication between PC and monitor when DDC/CI is ON, and monitor cannot be adjusted with PC because communication between PC and monitor is disconnected when DDC/CI is OFF.

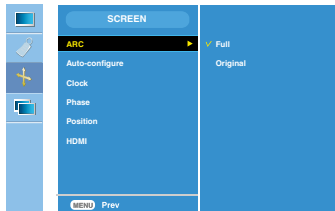


Screen Adjustment



ARC

To select the image size of the screen.
 <HDMI(Video), Component input only>

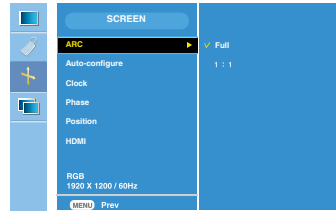


Full



Original

<HDMI(PC), RGB input only>



Full



1:1

Auto-Configure

This function is suitable for analogue signal input only. This button is for the automatic adjustment of the screen **Position**, **Clock** and **Phase**.

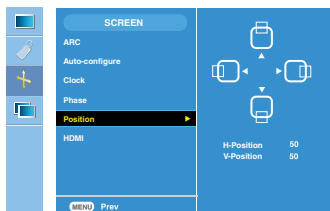
Clock

This function is suitable for analogue signal input only. To minimize any vertical bars or stripes visible on the screen background. The horizontal screen size will also change.

Phase

This function is suitable for analogue signal input only. To adjust the focus of the display. This item allows you to remove any horizontal noise and clear or sharpen the image of characters.

Position



This function is suitable for analogue signal input only. To adjust position of the screen. Press the **PIP** button to display the sub-menu for position.

- ◀ Left
 - ▶ Right
- Moving the screen position horizontally.
- ▲ Up
 - ▼ Down
- Moving the screen position vertically.



Screen Adjustment

HDMI

Video: Used when it is connected with DVD or SET-TOP BOX through HDMI.

* If you want to connect VCR, select VIDEO in this menu. Otherwise, you may see noise in the margin of the screen due to the difference in the screen size .

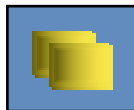
PC : Used when it is connected with PC through HDMI.

* If you want to connect PC, select PC in this menu. Otherwise, the screen may be too large to support PC sub screen



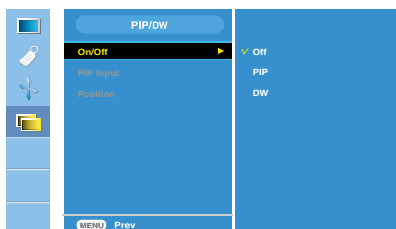
NOTE

When the Interlace Signal is inputted at the RGB source input level, the Auto-Configure, Clock, Phase and Position menu can't be used.



Adjusting PIP/DW Mode (Multiple Screen) Functions

(To adjust the sub screen)



On/Off



PIP

After selecting **PIP** in the **PIP/DW On/Off** menu, the following menu items can be adjusted.



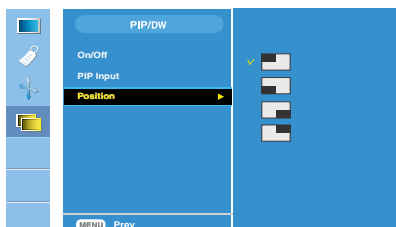
DW

After selecting **DW** in the **PIP/DW On/Off** menu, the following menu items can be adjusted.

PIP Input

To select an input signal for PIP/DW.

Position



To adjust the position of PIP screen.

NOTE



When the Interlace signal, such as the Set-top Box, is inputted at the RGB and HDMI source input level, the following will be shown.

- (1) If Interlace Signal is inputted in RGB, PIP/DW cannot be used.
- (2) If Interlace Signal is inputted in HDMI, PIP/DW cannot be used.
- (3) When Component is selected as the main screen for PIP/DW.

If the sub-screen is an Interlace Signal inputted RGB or HDMI, the screen will be displayed but the contents will not be displayed.

Check the following before calling for service.

No image appears	
⊙ Is the power cord of the display connected?	<ul style="list-style-type: none">• Check and see if the power cord is connected properly to the power outlet.
⊙ Is the power on and the power indicator blue or green?	<ul style="list-style-type: none">• Adjust the brightness and the contrast.
⊙ Is the power indicator amber?	<ul style="list-style-type: none">• If the display is in power saving mode, move the mouse or press any key on the keyboard to activate the screen.• Turn on the PC.
⊙ Do you see an "OUT OF RANGE" message on the screen?	<ul style="list-style-type: none">• This message appear when the signal from the PC (video card) is out of the diplay's horizontal or vertical frequency range. See the 'Specifications' section of this manual and configure the display again.
⊙ Do you see a "CHECK SIGNAL CABLE" message on the screen?	<ul style="list-style-type: none">• This message appears when the signal cable between your PC and the display is not connected. Check the signal cable and try again.

Do you see a "Controls locked" message on the screen?	
⊙ Do you see "Controls locked" when you push MENU button?	<ul style="list-style-type: none">• You can secure the current control settings, so that they cannot be inadvertently changed. You can unlock the OSD controls at any time by pushing the MENU+ ► / PIP button for several seconds: the message "Controls unlocked" will appear.

Display image is incorrect

⊙ Display Position is incorrect.

- Press the **OK/AUTO** button to automatically adjust your display image to the ideal setting. If the results are unsatisfactory, adjust the image position using the **H position and V position** icon in the on screen display.
- Check **Control Panel --> Display --> Settings** and see if the frequency or the resolution were changed. If yes, readjust the video card to the recommend resolution.

⊙ On the screen background, vertical bars or stripes are visible.

- Press the **OK/AUTO** button to automatically adjust your display image to the ideal setting. If the results are unsatisfactory, decrease the vertical bars or stripes using the **CLOCK** icon in the on screen display.

⊙ Any horizontal noise appearing in any image or characters are not clearly portrayed.

- Press the **OK/AUTO** button to automatically adjust your display image to the ideal setting. If the results are unsatisfactory, decrease the horizontal bars using the **PHASE** icon in the on screen display.
- Check **Control Panel --> Display --> Settings** and adjust the display to the recommended resolution or adjust the display image to the ideal setting. Set the color setting higher than 24 bits (true color).

⊙ The screen color is mono or abnormal.

- Check if the signal cable is properly connected and use a screwdriver to fasten if necessary.
- Make sure the video card is properly inserted in the slot.
- Set the color setting higher than 24 bits (true color) at **Control Panel - Settings**.

⊙ The screen blinks.

- Check if the screen is set to interlace mode and if yes, change it to the recommend resolution.

Have you installed the display driver?

⦿ **Have you installed the display driver?**

- Be sure to install the display driver from the display driver CD (or diskette) that comes with your display. Or, you can also download the driver from our web site: <http://www.lge.com>.

⦿ **Do you see an "Unrecognized monitor, Plug&Play (VESA DDC) monitor found" message?**

- Make sure to check if the video card supports Plug&Play function.

The audio function does not work.

⦿ **No sound?**

- See if the audio cable is connected properly.
- Adjust the volume.
- See if the sound is set properly.

⦿ **Sound is too low.**

- Adjust the volume.

Display	24 inches (61.3 cm) Flat Panel Active matrix-TFT LCD Glare coating / Anti-glare coating 24 inches viewable 0.270 mm pixel pitch		
Sync Input	Horizontal Freq.	Analog : 30 - 83 kHz (Automatic) Digital : 30 - 83 kHz (Automatic)	
	Vertical Freq.	56 - 75 Hz (Automatic)	
	Input Form	Separate TTL, Positive/Negative Composit TTL, Positive/Negative SOG (Sync On Green), Digital(HDCP)	
Video Input	Signal Input	15 pin D-Sub Connector HDMI/DVI connector(Digital), Component	
	Input Form	RGB Analog (0.7 Vp-p/ 75 ohm), Digital	
Resolution	Max	Analog : VESA 1920 x 1200 @60Hz Digital : VESA 1920 x 1200 @60Hz	
	Recommend	VESA 1920 x 1200 @60Hz	
Plug&Play	DDC 2B		
Power Consumption (without USB)	On Mode	: 85 W(Typ.)	
	Sleep Mode	≤ 3 W	
	Off Mode	≤ 2 W	
Dimensions &Weight	With Stand		Without Stand
	Width	56.00 cm / 22.05 inches	56.00 cm / 22.05 inches
	Height	44.45 cm / 17.50 inches(Min)	37.20 cm / 14.65 inches
		54.45 cm / 21.44 inches(Max)	
	Depth	27.02 cm / 10.64 inches	8.40 cm / 3.31 inches
Net	9.4 kg (20.8 lbs)		
Tilt/Swivel Range	Tilt	-5°~20°	
	Swivel range	350°	
	Height range	100 mm / 3.94 inches	
	Rotate	90° clockwise(Landscape -> Portrait)	
Power Input	AC 100-240V~ 50/60Hz 1.2A		
Environmental Conditions	Operating Conditions		
	Temperature	10°C to 35 °C	
	Humidity	10 % to 80 % non-Condensing	
	Storage Conditions		
	Temperature	-20°C to 60 °C	
	Humidity	5 % to 90 % non-Condensing	

Stand Base	Attached (<input type="checkbox"/>), Detached (<input type="radio"/>)	
Power cord	Wall-outlet type or PC-outlet type	
USB	Standard	USB 2.0, Self-Power
	Data Rate	Max 480 Mbps
	Power Consumption	Max 2.5W x 2

NOTE

- Information in this document is subject to change without notice.

Display	24 inches (61.3 cm) Flat Panel Active matrix-TFT LCD Glare coating / Anti-glare coating 24 inches viewable 0.270 mm pixel pitch		
Sync Input	Horizontal Freq.	Analog : 30 - 83 kHz (Automatic) Digital : 30 - 83 kHz (Automatic)	
	Vertical Freq.	56 - 75 Hz (Automatic)	
	Input Form	Separate TTL, Positive/Negative Composit TTL, Positive/Negative SOG (Sync On Green), Digital(HDCP)	
Video Input	Signal Input	15 pin D-Sub Connector HDMI/DVI connector(Digital), Component	
	Input Form	RGB Analog (0.7 Vp-p/ 75 ohm), Digital	
Resolution	Max	Analog : VESA 1920 x 1200 @60Hz Digital : VESA 1920 x 1200 @60Hz	
	Recommend	VESA 1920 x 1200 @60Hz	
Plug&Play	DDC 2B		
Power Consumption (without Speaker & USB)	On Mode	: 85 W(Typ.)	
	Sleep Mode	≤ 3 W	
	Off Mode	≤ 2 W	
Dimensions & Weight	With Stand		Without Stand
	Width	56.00 cm / 22.05 inches	56.00 cm / 22.05 inches
	Height	44.45 cm / 17.50 inches(Min) 54.45 cm / 21.44 inches(Max)	37.20 cm / 14.65 inches
	Depth	27.02 cm / 10.64 inches	8.40 cm / 3.31 inches
	Net	9.6 kg (21.2 lbs)	
Tilt/Swivel Range	Tilt	-5°~20°	
	Swivel range	350°	
	Height range	100 mm / 3.94 inches	
	Rotate	90°clockwise(Landscape -> Portrait)	
Power Input	AC 100-240V~ 50/60Hz 1.2A		
Environmental Conditions	Operating Conditions		
	Temperature	10°C to 35 °C	
	Humidity	10 % to 80 % non-Condensing	
	Storage Conditions		
	Temperature	-20°C to 60 °C	
Humidity	5 % to 90 % non-Condensing		

Stand Base	Attached (<input type="checkbox"/>), Detached (<input type="radio"/>)	
Power cord	Wall-outlet type or PC-outlet type	
USB	Standard	USB 2.0, Self-Power
	Data Rate	Max 480 Mbps
	Power Consumption	Max 2.5W x 2
Audio	RMS Audio Output	2W+2W(R+L)
	Input Sensitivity	0.7Wrms
	Speaker Impedance	16Ω

NOTE

- Information in this document is subject to change without notice.

■ PC INPUT Preset Modes (Resolution)

Display Modes (Resolution)		Horizontal Freq. (kHz)	Vertical Freq. (Hz)	Display Modes (Resolution)		Horizontal Freq. (kHz)	Vertical Freq. (Hz)
1	640 x 480	31.47	70.09	11	1280 x 768	61.80	65.96
2	640 x 480	31.47	59.94	12	1280 x 1024	63.98	60.02
3	720 x 480	37.50	75	13	1280 x 1024	79.98	75.02
4	720 x 400	31.47	70.08	14	1600 x 1200	75.00	60
5	800 x 600	37.88	60.32	15	1600 x 1200	75.00	60
6	800 x 600	46.88	75	16	1680 x 1050	65.29	60.45
7	1024 x 768	49.72	74.55	*17	1920 x 1200	74.04	59.95
8	1024 x 768	48.36	60				
9	1152 x 864	60.02	75.03				
10	1280 x 768	68.68	75.06				

* Recommend Mode

■ HDMI Video INPUT

Display Modes (Resolution)	Horizontal Freq. (kHz)	Vertical Freq. (Hz)
1 480i	15.75	60.00
2 576i	15.62	50.00
3 480p	31.50	60.00
4 576p	31.25	50.00
5 720p	37.50	50.00
6 720p	45.00	60.00
7 1080i	28.12	50.00
8 1080i	33.75	60.00
9 1080p	56.25	50.00
10 1080p	67.50	60.00

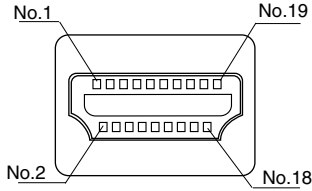
■ Component Video INPUT

Display Modes (Resolution)	Horizontal Freq. (kHz)	Vertical Freq. (Hz)
1 480i	15.75	60.00
2 576i	15.62	50.00
3 480p	31.50	60.00
4 576p	31.25	50.00
5 720p	37.50	50.00
6 720p	45.00	60.00
7 1080i	28.12	50.00
8 1080i	33.75	60.00

■ Indicator

MODE	LED Color
On Mode	Blue
Sleep Mode	Amber
Off Mode	Off

HDMI Type Pin Assignment

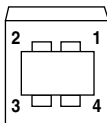


Type A pin	Signal Name	Wire	Type A pin
1	T. M. D. S. Data2+	A	1
2	T. M. D. S. Data2 Shield	B	2
3	T. M. D. S. Data2-	A	3
4	T. M. D. S. Data1+	A	4
5	T. M. D. S. Data1 Shield	B	5
6	T. M. D. S. Data1-	A	6
7	T. M. D. S. Data0+	A	7
8	T. M. D. S. Data0 Shield	B	8
9	T. M. D. S. Data0-	A	9
10	T. M. D. S. Clock+	A	10
11	T. M. D. S. Clock Shield	B	11
12	T. M. D. S. Clock-	A	12
13	CEC	C	13
14	Reserved(In cable but N.C. on device)	C	14
15	SCL	C	15
16	SDA	C	16
17	DDC/CEC Ground	D	17
18	+5V Power	5V	18
19	Hot Plug Detect	C	19

T. M. D. S. (Transition Minimized Differential Signaling)

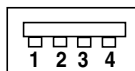
USB Connector Pin Assignment

UP stream



Series B connector

Down stream



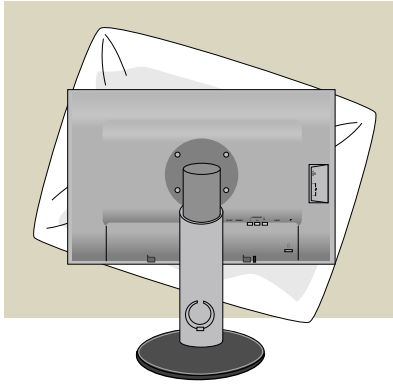
Series A connector

#1:VCC #2 : Data -
#3:Data + #4 : GND

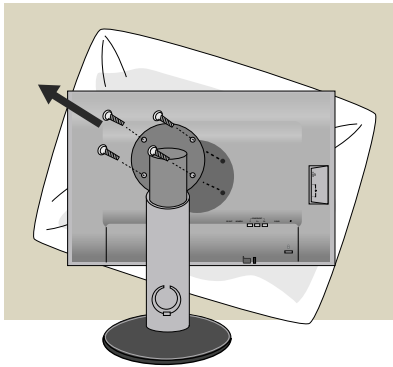
Female Connector View

How to Install the VESA Standard wall mounting

This monitor meets VESA-compliant mounting interface pad specifications.

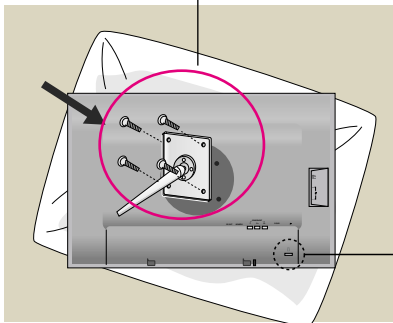


1. After moving the product to face downward, make sure to place it on a soft cloth or a cushion to avoid surface damage.



2. Separate the head and the stand with the use of a screwdriver.

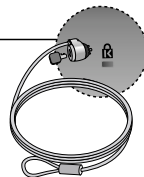
3. Set up the VESA standard Stand Base.



VESA wall mounting

Connected to another object (stand type and wall-mounted type. This monitor accepts a VESA-compliant mounting interface pad.- **This has to be purchased separately if required.**)

For further information, refer to the VESA Wall Mounting Instruction Guide.



Kensington Security Slot

Connected to a locking cable that can be purchased separately at most computer stores.

