



MICRO Hi-Fi SYSTEM OWNER'S MANUAL

MODEL: XC62

|XC62-A0U/D0U/X0U

|XCS62F

Before connecting, operating or adjusting this product,
please read this instruction booklet carefully and
completely.


USB **XTS^{pro}**
eXcellent True Sound




Safety Precaution



CAUTION: TO REDUCE THE RISK OF ELECTRIC SHOCK DO NOT REMOVE COVER (OR BACK) NO USER-SERVICEABLE PARTS INSIDE REFER SERVICING TO QUALIFIED SERVICE PERSONNEL.

 This lightning flash with arrowhead symbol within an equilateral triangle is intended to alert the user to the presence of uninsulated dangerous voltage within the product's enclosure that may be of sufficient magnitude to constitute a risk of electric shock to persons.

 The exclamation point within an equilateral triangle is intended to alert the user to the presence of important operating and maintenance (servicing) instructions in the literature accompanying the product.

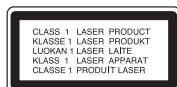
WARNING: TO PREVENT FIRE OR ELECTRIC SHOCK HAZARD, DO NOT EXPOSE THIS PRODUCT TO RAIN OR MOISTURE.

WARNING: Do not install this equipment in a confined space such as a book case or similar unit.

CAUTION: Do not block any ventilation openings. Install in accordance with the manufacturer's instructions.

Slots and openings in the cabinet are provided for ventilation and to ensure reliable operation of the product and to protect it from over heating.

The openings should be never be blocked by placing the product on a bed, sofa, rug or other similar surface. This product should not be placed in a built-in installation such as a bookcase or rack unless proper ventilation is provided or the manufacturer's instruction has been adhered to.



CAUTION: This product employs a Laser System. To ensure proper use of this product, please read this owner's manual carefully and retain it for future reference. Should the unit require maintenance, contact an authorized service center. Use of controls, adjustments or the performance of procedures other than those specified herein may result in hazardous radiation exposure.

To prevent direct exposure to laser beam, do not try to open the enclosure. Visible laser radiation when open. DO NOT STARE INTO BEAM.

CAUTION: The apparatus should not be exposed to water (dripping or splashing) and no objects filled with liquids, such as vases, should be placed on the apparatus.

CAUTION concerning the Power Cord

Most appliances recommend they be placed upon a dedicated circuit;

That is, a single outlet circuit which powers only that appliance and has no additional outlets or branch circuits. Check the specification page of this owner's manual to be certain.

Do not overload wall outlets. Overloaded wall outlets, loose or damaged wall outlets, extension cords, frayed power cords, or damaged or cracked wire insulation are dangerous. Any of these conditions could result in electric shock or fire. Periodically examine the cord of your appliance, and if its appearance indicates damage or deterioration, unplug it, discontinue use of the appliance, and have the cord replaced with an exact replacement part by an authorized servicer.

Protect the power cord from physical or mechanical abuse, such as being twisted, kinked, pinched, closed in a door, or walked upon. Pay particular attention to plugs, wall outlets, and the point where the cord exits the appliance.

To disconnect power from the mains, pull out the mains cord plug. When installing the product, ensure that the plug is easily accessible.



Disposal of your old appliance

1. When this crossed-out wheeled bin symbol is attached to a product it means the product is covered by the European Directive 2002/96/EC.
2. All electrical and electronic products should be disposed of separately from the municipal waste stream via designated collection facilities appointed by the government or the local authorities.
3. The correct disposal of your old appliance will help prevent potential negative consequences for the environment and human health.
4. For more detailed information about disposal of your old appliance, please contact your city office, waste disposal service or the shop where you purchased the product.



This product is manufactured to comply with the EEC DIRECTIVE 89/336/EEC, 93/68/EEC and 2006/95/EC.

POWER SAVE MODE

You can set up the unit into an economic power save mode.

In the power-on status, press and hold **POWER** (⏻) for about 3 seconds.

- Nothing is displayed on display window when the unit goes into the power save mode.

To cancel power save mode, press **POWER** (⏻).

Before use

Contents

Before use

About the symbols for instruction	3
Notes on Discs	3
Notes on Tapes	3
Front / Back Panel	4
Remote Control	5

Connection

Speaker System Connection	6
Antenna (Aerial) Connection	6
Auxiliary Function	6

Operation

Basic Operation	7
Sound Adjustment	7
Advanced Setting	7-8
USB Function	8-9
TAPE Function	9
RADIO Function	10-11
PORTABLE Function	11
CD Function	12

Reference

Troubleshooting	13
About MP3/WMA	13
Specifications	14

About the symbols for instruction



Indicates hazards likely to cause harm to the unit itself or other material damage.

Note

Indicates special notes and operating features.

Notes on Discs

Handling discs

Do not touch the playback side of the disc. Hold the disc by the edges so that fingerprints do not get on the surface. Never stick paper or tape on the disc.

Storing discs

After playing, store the disc in its case. Do not expose the disc to direct sunlight or sources of heat and never leave it in a parked car exposed to direct sunlight.

Cleaning discs

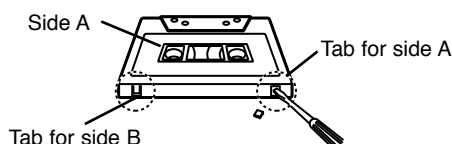
Fingerprints and dust on the disc can cause poor picture quality and sound distortion. Before playing, clean the disc with a clean cloth. Wipe the disc from the center outward.

Do not use strong solvents such as alcohol, benzine, thinner, commercially available cleaners, or anti-static spray intended for older vinyl records.

Notes on Tapes

Preventing record

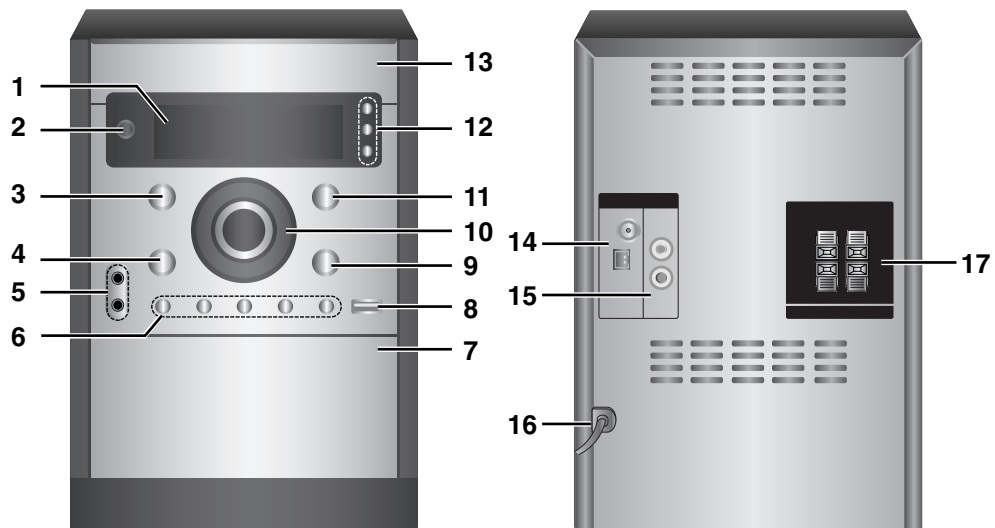
Removing the tab(s) of the cassette (with a small screwdriver) will prevent accidental erasure.



To record again, cover the hole of the tab with an adhesive tape.

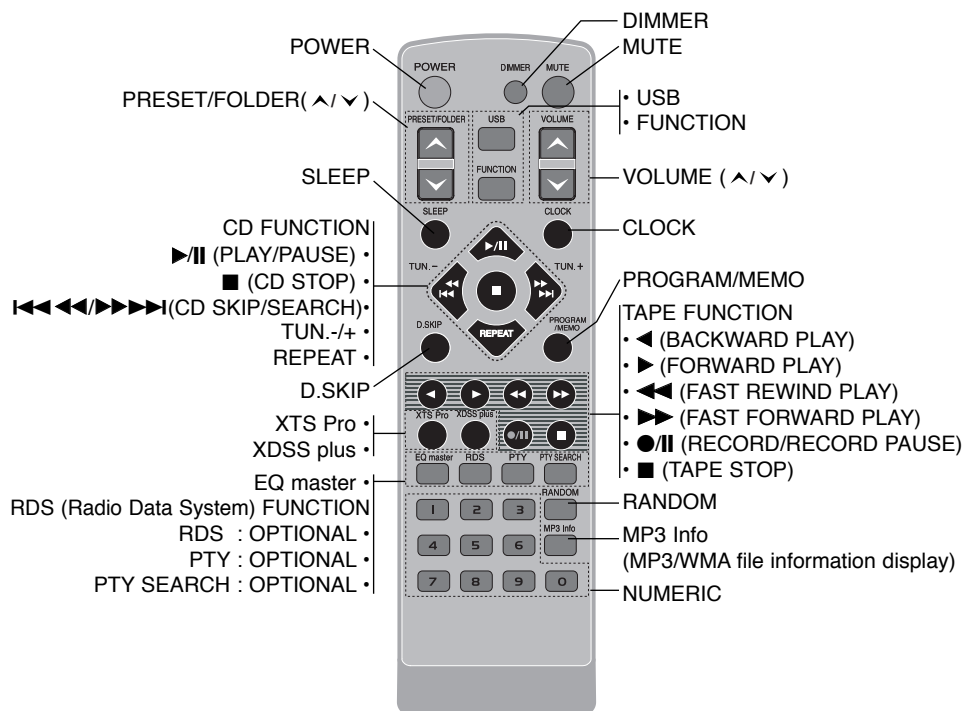


Front / Back Panel

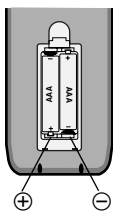


- | | |
|--|--|
| 1. DISPLAY WINDOW | 7. ▲ PUSH EJECT position |
| 2. ⏻/⏻ (POWER) | 8. USB (USB connector) |
| 3. ▶/⏸ PLAY(PAUSE) | 9. • ▶▶ (CD SKIP/SEARCH) |
| 4. • ◀◀ (CD SKIP/SEARCH) | (FAST FORWARD PLAY) |
| (FAST REWIND PLAY) | • TUNE.+ |
| • TUNE.- | 10. VOLUME CONTROL KNOB |
| 5. • PORT.IN jack | 11. ■ STOP |
| • (Headphone jack) : Ø3.5mm | 12. • TIMER |
| 6. • FUNCTION | • CLOCK |
| (FM, AM, CD, USB, AUX, PORTABLE, TAPE) | • SET (RDS - OPTIONAL) |
| • XDSS plus | 13. DISC TRAY |
| • PLAY MODE | 14. AM/FM ANTENNA TERMINAL |
| ST./MONO | 15. AUX IN (AUXILIARY INPUT) connector |
| • CD SYNC | 16. POWER IN (POWER CORD) |
| • ▲ CD OPEN (DEMO) | 17. SPEAKER TERMINAL |

Remote Control



Remote Control battery installation



Detach the battery cover on the rear of the remote control, and insert two R03 (size AAA) batteries with ⊕ and ⊖ aligned correctly.

Caution

: Do not mix old and new batteries. Never mix different types of batteries (standard, alkaline, etc.).

Remote Control Operation Range

Point the remote control at the remote sensor and press the buttons.

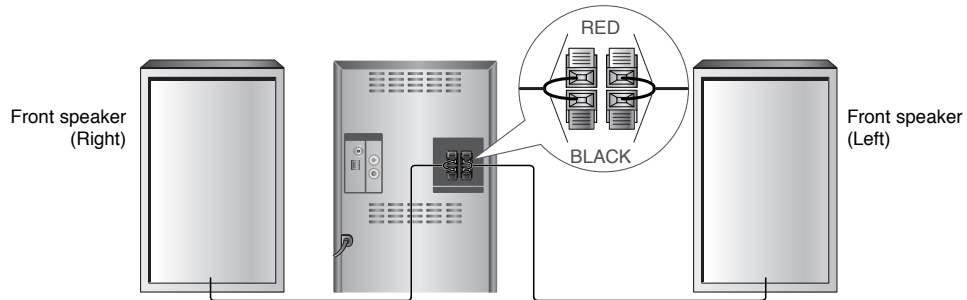
- Distance : About 23 ft (7 m) from the front of the remote sensor.
- Angle : About 30° in each direction of the front of the remote sensor.

Before use

Connection

Speaker System Connection

Connect the speaker cables to the speaker terminal.

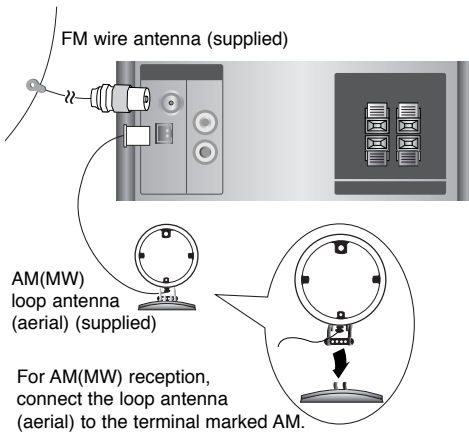


Notes:

- Be sure to match the speaker cable to the appropriate terminal on the components: + to + and – to –. If the cords are reversed, the sound will be distorted and will lack base.
- If you use front speakers with low maximum input rating, adjust the volume carefully to avoid excessive output on the speaker.
- Connect the Left/Right speaker correctly. If it is reversed, the sound may be distorted.

Antenna (Aerial) Connection

Connect the supplied FM/AM antennas for radio reception.

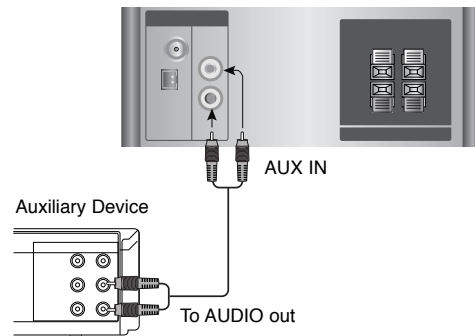


Notes:

- To prevent noise pickup, keep the AM loop antenna away from the unit and other components.
- Be sure to fully extend the FM wire antenna.
- After connecting the FM wire antenna, keep it as horizontal as possible.

Auxiliary Function

Connect an auxiliary device such as a TV or VCR via the rear mounted AUX connector and press **FUNCTION** repeatedly to select AUX.



Note:

Turn the unit off and then connect an auxiliary device, or it may cause a noise.

Operation

Basic Operation

Headphone jack

Connect a headphone plug (ø3.5 mm) into the jack to listen to the sound through headphones. Connecting headphones (not supplied) will switch off the speakers.

MUTE

Press **MUTE** to temporarily stop the sound. The "🔊" indicator flashes on display window. To cancel it, press **VOLUME** (▲/▼) or **MUTE** again.

DIMMER

Pressing **DIMMER** one time darkens or brightens the display window.

RANDOM

Press **RANDOM**, play tracks/files you can in a random order or cancel it.

DEMO

Press **▲ CD OPEN** in power off state to demonstrate the function on display window. To cancel it, press **POWER** (🔌/I) or **▲ CD OPEN** again.

Sound Adjustment

XTS Pro

The function creates the optimum sound for you to play of the original sound. Each time you press **XTS Pro**, "XTS -- PRO ON" or "XTS -- PRO OFF" is displayed in turn.

Note:

The XTS Pro function will not be operated when a headphone has been connected.

XDSS

(eXtreme Dynamic Sound System)

Press **XDSS plus** to reinforce treble, bass and the surround effect.

The "XDSS ON" or "NORMAL" indicator lights.

MP3 Optimizer

This function is optimized for compressible MP3 files so that it improves the bass sound. Each time you press **XDSS plus** the setting changes in the following order.

XDSS ON → MP3 -- OPT ON → NORMAL

EQUALIZER Effect

You can choose 7 fixed sound impressions and adjust the BASS, MIDDLE and TREBLE.

- You can select a desired sound mode by using **EQ master**.

NORMAL → USER EQ → POP → CLASSIC

↑ JAZZ ← DRAMA ← ROCK ↓

- Press **EQ master** to select USER EQ.

1. To enter the "USER EQ" setting mode, press **SET** while "USER EQ" is displayed.
2. In USER EQ mode, press **◀/▶/II PLAY** or **■ STOP** on the front panel repeatedly. Then you can select the sound effect you want among BASS, MIDDLE or TREBLE.
3. When a menu you select is displayed, press **◀/▶** on the front panel to set the sound level MIN, -4 ~ +4, MAX steps.
- Then the sound level is displayed for a moment and the setting completed.
4. Repeat the steps from 2 to 3 to set other sound effect.
5. Press **SET**.

Advanced Setting

Setting the Clock

1. Press **CLOCK**.
2. Select a 24 hour time system or a 12 hour time system by pressing **◀/▶** on the front panel.

▲▲▲▲▲▲▲▲ AM 12:00 ▶ or ▲▲▲▲▲▲ 0:00 ▶
(12HR) (24HR)

3. Press **SET** to confirm the selected hour time system.
4. Press **◀/▶** on the front panel to set the correct hours then press **SET**.
5. Press **◀/▶** on the front panel to set the correct minutes press **SET**.
6. Press **CLOCK** at any time, to display the time for about 5 seconds.

Note:

If you want to reset the clock, press and hold **CLOCK** for more than 2 seconds.

Sleep Timer Function

When the sleep timer is used, the power is automatically turned off after the specified time has elapsed.

1. Press **SLEEP** to set the desired sleep time. The SLEEP indicator and sleep time appear on display window.
2. Press **SLEEP** once, the setting changes in the following order.
SLEEP 180 → 150 → 120 → 90 → 80
→ 70 → 60 → 50 → 40 → 30 → 20 → 10
→ OFF (No display) → SLEEP 180 ...

Notes:

- If you press **SLEEP** while the sleep time is displayed, the SLEEP time is reset.
- To stop the function, press the **SLEEP** repeatedly until "SLEEP 10" appears, and then press **SLEEP** again.

Timer Function

With the TIMER function you can turn CD, TAPE and USB play function on or off at a desired time. For radio reception, the TIMER function turns on/off the radio and record radio broadcasting at a desired time.

1. Press **CLOCK** to check the current time.
(If you don't set clock, the timer function doesn't work.)
2. Press **TIMER** to enter the timer setting mode. If you want to correct the previously memorized TIMER setting, press and hold the **TIMER** for more than 2 seconds.
- The previous memorized time and "⊙" indicator appear on display window.
3. Each function (TUNER → CD → USB → TAPE) flashes on display window in turn. Press **SET** when the desired function is flashing.
4. a. 1) When you select the TUNER function, 'PLAY' and 'REC' flash on display window alternately for about 3 seconds.
'PLAY' indicator : TUNER play only
'REC' indicator : TUNER play and recording
2) Press **SET** when the desired function is flashing.
3) Select the previous memorized preset number with ◀◀/▶▶ and press **SET**.

- b. When you select the CD, TAPE or USB function,
- 'ON TIME' appears for about 0.5 seconds on display window and then disappears.

5. Set the hour to switch on pressing ◀◀/▶▶ on the front panel and press **SET**.
6. Set the minute to switch on pressing ◀◀/▶▶ on the front panel and press **SET**.
- 'OFF TIME' appears for about 0.5 seconds on display window and then disappears.
7. Refer to the steps 5 - 6 and set the hour/minute to switch off.
8. Adjust the volume level by pressing ◀◀/▶▶ on the front panel and press **SET**.
"⊙" appears in the display window and the timer setting has been completed.
9. Switch the system off.
The selected function is automatically switched on or off at the time set.

To cancel or check the timer

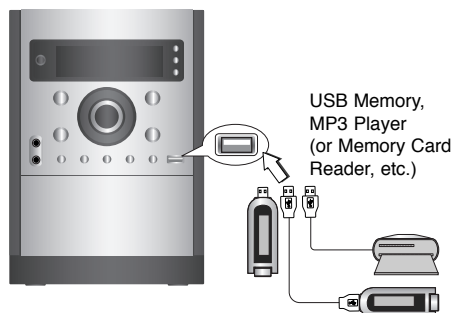
Each time **TIMER** is pressed, you can select the timer set or cancel. You can also check the timer setting status. To activate or check the timer, press the **TIMER** that "⊙" appears on display window. To cancel the TIMER, press **TIMER**, then "⊙" disappears on display window.

Note:

When you set "REC" in TUNER mode and there is no tape in the deck, the unit activates only the TUNER play function.

USB Function

You can enjoy MP3/WMA media file saved on MP3 player or USB memory device by connecting the device to the USB port of this unit.



Compatible Devices

1. Devices which require additional program installation when you connect it to a computer, are not supported.
2. MP3 Player : Flash type MP3 player.
 - The MP3 player requiring installation of a driver is not supported.
3. USB Flash Drive : Devices that support USB2.0 or USB1.1.

Basic Playback

1. Connect the USB device to the USB connector of your unit.
2. Press **USB** to select USB function. "CHECKING" appears on display window, and then the total number of files is displayed.
3. Press **▶/|| (PLAY/PAUSE)**.
In addition, you can also play using the **NUMERIC** buttons.

To Remove the USB from the unit

1. Press **FUNCTION** repeatedly to select other modes.
2. Remove the USB from the unit.

Note:

Besides Basic Playback, if you want to operate other functions, see the CD Playback section.

Moving to other cards

In case that more than two memory cards are connected to the USB port, press **D.SKIP** to select a card you want to use.

Notes:

- Do not extract the USB device in operating.
- A back up demands to prevent a data damage.
- If you use a USB extension cable or USB hub, the USB device might not be recognized.
- A device using NTFS file system is not supported (Only the FAT (16/32) file system is supported).
- The USB function of this unit does not support all USB devices.
- Digital camera and mobile phones are not supported.
- This unit is not supported when the total number of files is 1000 or more.

TAPE Function

Basic Playback

1. Press **FUNCTION** to select TAPE function.
2. Load a tape.
3. Press **▶** or **◀**.

To Stop Play

Press **■ STOP** during playback.

To Play Rewind or Fast Forward

After pressing **◀◀/▶▶** during playback, or stop, press **▶** or **◀** at a point you want.

AUTO REVERSE DECK

You can select the direction of the tape you want by pressing **PLAY MODE**.

Display	Function
→ ←	After the TAPE plays the front or reverse (backward play) side, stops automatically.
→) ←)	After the TAPE plays the front and reverse side, stops automatically.
(→) (←)	After the TAPE plays six times repeatedly the front and reverse side, stops automatically.

Tape Recording

Wind the tape to the point recording starts.
Use only normal tapes.

Basic Setting

1. Select the function (FM/AM, CD, USB, AUX or PORTABLE) you want to record.
2. Open the cassette deck and insert a blank cassette into the cassette compartment.

Recording from Radio, USB, CD, PORTABLE or Auxiliary source

1. Press **FUNCTION** to select a mode in which you want to record.
2. Press **●/||**, then "REC" blinks and the device is on standby.
3. Press **●/||** again to start recording.
4. Press **■** to cancel recording.

Note:

On recording, press **●/||** to pause.

CD to Tape Synchronized Recording

The CD synchro recording function dubs a complete CD and programmed titles automatically into a cassette.

1. Press **FUNCTION** to select CD function.
2. Press **CD SYNC** in stop mode.
"REC" flashes and "CD SYNC" indicator lights.
3. The synchronized recording is started automatically after about 7 seconds.

Notes:

- If you wish to record from the desired track, select the desired track with **I◀◀◀/▶▶▶I (CD SKIP/SEARCH)** before commencing CD synchro recording.
- You cannot change any mode during recording.

RADIO Function

RDS Function - OPTIONAL

About RDS

This unit is equipped with RDS (Radio Data System), which brings a wide range of information to FM radio. RDS, now in use in many countries, is a system for transmitting station call signs or network information, a description of station programme type text message about the station or specifics of musical selection and the correct time.

RDS Tuning

When a FM station is tuned in and it contains RDS data, the unit will automatically display the station's call sign and the RDS indicator will light on Display Window as well as indicators for the programme type recognition (PTY), Radio Text (RT), Clock Time (CT) and RDS services programme (PS) if transmitted by the station.

RDS Display Options

The RDS system is capable of transmitting a wide variety of information in addition to the initial call sign that appears when a station is first tuned. In normal RDS operation the display will indicate the station name, broadcast network or call letters. Pressing **RDS** on the remote control enables you to cycle through the various data types in the sequence:

(FREQUENCY → PTY → RT → CT → PS)
↑

- PTY (Programme type recognition)
 - The name of the programme type is shown on Display Window.
- RT (Radio text recognition)
 - The name of the radio text is shown on Display Window.
- CT (Time controlled by the channel)
 - Enables the unit to receive the actual time and show it on Display Window.
- PS (Programme Service name)
 - The name of the channel is shown on Display Window.

Note:

Some RDS stations may not choose to include some of these additional features. If the data required for the selected mode is not being transmitted, the Display Window will show a PTY NONE, RT NONE, CT NONE or PS NONE message.

Programme Search (PTY)

A major benefit of RDS is its ability to encode broadcasts with Programme Type (PTY) codes that indicate the type of material being broadcast. The following list shows the abbreviations used to indicate each PTY along with an explanation of the PTY.

NEWS	News
AFFAIRS	Current Affairs
INFO	Information
SPORT	Sports
EDUCATE	Educational
DRAMA	Drama
CULTURE	Culture
SCIENCE	Science
VARIED	Varied Speech Programme
POP M	Popular Music
ROCK M	Rock Music
EASY M	Easy Listening Music
LIGHT M	Light Music
CLASSICS	Classical Music
OTHER M	Other Music
WEATHER	Weather Information
FINANCE	Financial Programmes
CHILDREN	Children's Programmes
SOCIAL	Social Affairs Programmes
RELIGION	Religious Broadcasts
PHONE IN	Phone-In Programmes
TRAVEL	Travel and Touring
LEISURE	Leisure and Hobby
JAZZ	Jazz Music
COUNTRY	Country Music
NATION M	National Music
OLDIES	Oldies Music
FOLK M	Folk Music
DOCUMENT	Documentary Programmes
TEST	Station Alarm Test Message
ALARM !	Emergency Broadcast Information

You may search for a specific Programme Type (PTY) by following these steps.

1. Press **FUNCTION** to select FM mode.
2. Press **PTY**, the display will show the last PTY in use.
3. Press **PTY** repeatedly to select a desired PTY.
4. When the PTY is selected, press and hold **PTY SEARCH**. The unit will go into an automatic search mode. When a station is tuned, the search will stop.

Presetting the Radio Stations

You can preset 50 stations for FM and AM.

1. Press **FUNCTION** to select the frequency (AM or FM) you want.
2. Select a station you want by pressing **TUN./+** on the remote control or **TUNE./+** on the front panel.

Tuning in automatically

- Press **TUN./+** or **TUNE./+** for more than 0.5 second. Scanning stops when the unit tunes in a station.

Tuning in manually

- Press **TUN./+** or **TUNE./+** briefly and repeatedly.
3. Press **PROGRAM/MEMO**. A preset number will flash on display window.
 4. Press **PRESET/FOLDER** (▲/▼) to select the preset number you want.
 5. Press **PROGRAM/MEMO** again.
The station is stored.
 6. Repeat the steps from 1 (or 2) to 5 to store other stations.

To delete all of the memorized stations

Press and hold **PROGRAM/MEMO** for two seconds, "ERASE ALL" appears on display window and then **PROGRAM/MEMO** again, the stations are deleted.

For your reference

If all stations have already been entered, "FULL" message will appear for a moment and then a preset number will flash. To change the preset number, follow the steps 4 - 5.

To recall presets

Press and hold **PRESET/FOLDER** (▲/▼) until the desired preset number appears or press it repeatedly.

Listening to the Radio

1. Press **FUNCTION** to select the frequency (AM or FM) you want.
The last received station is tuned in.
2. Press **PRESET/FOLDER** (▲/▼) repeatedly to select the preset station you want.
- Each time you press the button, the unit tunes in one preset station at a time.
3. Adjust the volume by pressing **VOLUME** (▲/▼) on the remote control [or rotating the **VOLUME control knob**] repeatedly.

To listen to non-preset radio stations

Refer to the sections "Presetting the Radio Stations" on the left.

To turn off the radio

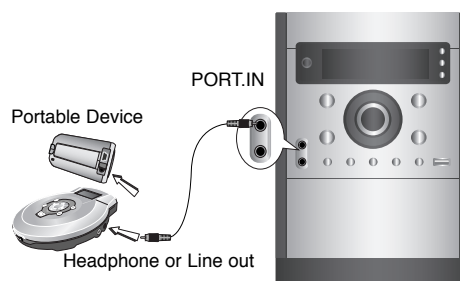
Press **POWER** (⏻) to turn the unit off or select another function mode (CD, USB, AUX, PORTABLE, TAPE).

For your reference

- If an FM program is noisy;
Press **ST./MONO**, then "STEREO" disappears on display window. There will be no stereo effect, but the reception will be improved. Press **ST./MONO** again to restore the stereo effect.
- To improve reception;
Reposition the supplied antennas.

PORTABLE Function

When you connect a portable music playing device to the PORT. IN jack on this device by using a ϕ 3.5mm mini stereo cable (not supplied), you can hear the sound being outputted from the portable device through the speaker.



1. Connect the PORT.IN jack on this device to a headphone jack on another portable one by using a cable.
2. Press **FUNCTION** repeatedly to select PORTABLE function.
3. Start playing the connected portable device.
4. Adjust the volume by using **VOLUME**.

Note:

The " ϕ 3.5mm mini stereo cable" is sold separately.

CD Function

Basic Playback

1. Press **FUNCTION** to select the CD function.
If no disc is loaded then "NO DISC" is displayed.
2. Press **▲ CD OPEN** and place the disc into the disc tray.

Note:

To load an 8cm (3 inch) disc, put it onto the inner circle of the tray.

3. Press **▲ CD OPEN** to close the disc compartment.
4. Press **▶/■ (PLAY/PAUSE)**. You can also play an Audio CD or MP3/WMA CD using the **NUMERIC** buttons.

Pause

Press **▶/■ (PLAY/PAUSE)** or **◀▶/■ PLAY (PAUSE)** during playback.

Press this button again to resume play.

Stop

Press **■ (STOP)** during playback.

Searching a Track

Hold **◀◀◀◀/▶▶▶▶** on the remote control (or **◀◀/▶▶** on the front panel) during playback, then release at the point you want.

Note:

This function is only available for Audio CD's.

Skipping a Track

- Press **▶▶▶▶** to go to the next track.
- When the **◀◀◀◀** is pressed once midway through a track, the player returns to the beginning of that track. When it is pressed again, a track is skipped each time the button is pressed.

To Program Play

You can arrange the order of the tracks on a disc (the MP3/WMA files on a USB) in the way you want and create your own program.

The program can contain up to 20 tracks (files).

1. Press **PROGRAM/MEMO** in stop mode.
2. Press **◀◀◀◀/▶▶▶▶** to select the tracks (files).
3. Press **PROGRAM/MEMO**.
4. Repeat the steps 1 - 3 above.
5. Press **▶/■ (PLAY/PAUSE)**.

To check the program contents

Press **PROGRAM/MEMO** in stop mode.

- A track and program number will be displayed.

To clear program contents

Press **PROGRAM/MEMO** in stop mode.

And then press **■ (STOP)**.

To add program contents

1. Press **PROGRAM/MEMO** repeatedly in the program stop mode until the Track Number blinks.
2. Repeat the steps 2 - 3 above.

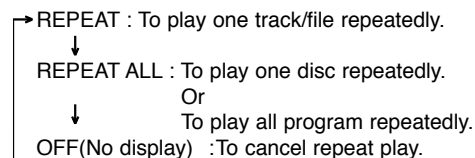
To modify program contents

1. Press **PROGRAM/MEMO** to display the program number you want to modify.
2. Repeat the steps 2 - 3 above.

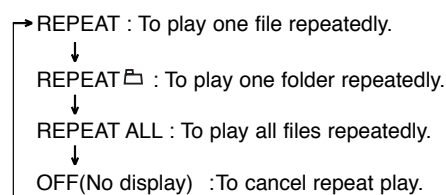
Repeat

Press **REPEAT** repeatedly during playback.

Audio CD or Program repeat play



MP3/WMA/USB



To check MP3/WMA file information

Press **MP3 Info** during MP3/WMA file playback.

- The information (Time information, Folder and File name, Title, Artist, Album or Disk no) of the MP3/WMA file will be shown on display window.
- If there is no the information of the MP3/WMA file, "NO ID3 TAG" or "NO WMA TAG" indicator will be shown in the display window.

Note:

This unit can play a CD-R or CD-RW that contains audio titles or MP3/WMA files.

MP3/WMA file folder function

Press **PRESET/FOLDER (▲/▼)** to select the folder you want.

Note:

It is applied in the case that has several folder in MP3/WMA file.

Reference

Troubleshooting

Symptom	Cause	Correction
No power	• The power cord is disconnected.	• Plug the power cord into the wall outlet securely.
No sound	• The power of the external source equipment is turned off.	• Switch on the external source equipment.
	• The speaker cable is connected to a wrong position.	• Set the speaker cable to the correct position, then turn on the unit again by pressing POWER.
The unit does not start playback	• An unplayable disc is inserted.	• Insert a playable disc.
	• The disc is placed upside down.	• Place the disc with the playback side down.
	• The disc is not placed within the guide.	• Place the disc on the disc tray correctly inside the guide.
	• The disc is dirty.	• Clean the disc.
The remote control does not work properly	• The remote control is not pointed at the remote sensor of the unit.	• Point the remote control at the remote sensor of the unit.
	• The remote control is too far from the unit.	• Operate the remote control within about 23 ft (7 m).
	• There is an obstacle in the path of the remote control and the unit.	• Remove the obstacle.
	• The batteries in the remote control are exhausted.	• Replace the batteries with new ones.
Unable to record	• Record protect tabs are removed.	• Cover hols on back edge of tape with tap.

About MP3/WMA

MP3/WMA Disc compatibility with this unit is limited as follows:

1. Sampling Frequency
8 - 48kHz(MP3), 32 - 48kHz(WMA)
2. Bit rate
8 - 320kbps(MP3), 48 - 320kbps(WMA)
3. CD-R physical format should be "ISO 9660"
4. If you record MP3/WMA files using the software which cannot create a FILE SYSTEM, for example "Direct-CD" etc., it is impossible to playback MP3 files. We recommend that you use "Easy-CD Creator", which creates an ISO 9660 file system.
5. File names should be named using 30 letters or less and must incorporate ".mp3", ".wma" extension e.g. "*****.MP3" or "*****.WMA"
6. Do not use special letters such as "/" : * ? " < >"etc.
7. Even if the total number of files on the disc has more than 1000, it will only be shown up to 999.

About MULTI SESSION

- This function recognizes the multi session disc according to a disc of CD-ROM type.
- ex) If there are MP3/WMA files in the first session, the MP3/WMA files in the first session are only played. If there are only MP3/WMA files in the whole session, all of the MP3/WMA files in the session are played. If there is an Audio CD in the first session, only the Audio CD in the first session is played.

Specifications

General

Power supply	Refer to the back panel of the unit.
Power consumption	Refer to the back panel of the unit.
Net Weight	3.4 kg
External dimensions (WxHxD)	170 x 243 x 282 mm

Tuner

FM	Tuning Range	87.5 - 108.0 MHz or 65 - 74 MHz, 87.5 - 108.0 MHz
	Intermediate Frequency	10.7 MHz
	Signal to Noise Ratio	60/55 dB (MONO/STEREO)
	Frequency Response	50 - 10000 Hz
AM	Tuning Range	522 - 1620 kHz or 520 - 1720 kHz
	Intermediate Frequency	450 kHz
	Signal to Noise Ratio	30 dB
	Frequency Response	140 - 1800 Hz

Amplifier

Output Power	30 W + 30 W
T.H.D	0.5 %
Frequency Response	40 - 20000 Hz
Signal-to-noise ratio	75 dB

CD

Frequency response	40 - 20000 Hz
Signal-to-noise ratio	75 dB
Dynamic range	75 dB

Cassette tape player

Tape Speed	3000 ± 3 % (MTT-111, NORMAL-SPEED)
Wow Flutter	0.25 % (MTT -111, JIS-WTD)
F.F/REW Time	120 sec (C-60)
Frequency Response	250 - 8000 Hz
Signal to Noise Ratio	43 dB
Channel Separation	45 dB (P/B)/45 dB (R/P)
Erase Ratio	50 dB (MTT-5511)

Speakers

Type	1 Way 1 Speaker
Impedance	4 Ω
Frequency Response	75 - 17000 Hz
Sound Pressure Level	83 dB/W (1m)
Rated Input Power	30 W
Max. Input Power	60 W
Net Dimensions (WxHxD)	144 x 243 x 171 mm
Net Weight (1EA)	1.47 kg

Designs and specifications are subject to change without notice.

P/NO : MFL38289205