



PORTABLE MULTIMEDIA PLAYER

OWNER'S MANUAL

MODEL: FM33

**Please read this manual carefully before operating
your set.**

Retain it for future reference.

**Designs and specifications are subject to change
without notice for improvement.**



Table of Contents

Features	4	Installation and connection	25-27
Important safety instructions	5-12	To use the AC adapter	25
Package contents	13-14	To Charge the battery	25
Using the neck strap	14	To connect the USB cable	26
Name of each component	15-16	To disconnect the USB Cable (In the MSC mode) . . .	27
Top, front and bottom views	15	Basic operation	28-29
Right and left views	16	To Turn on/off the power	28
Installing software	17-19	Lock feature	28
Before installing the operating program	17	Reset feature	28
LG Media Center	18-19	Volume control	28
Installing Win98SW MSC Device Driver	19	Home menu screen	29
Connecting to the PC	20-23	General operations of Home menu	29
To use a portable media device - In the MTP mode . . .	20	Playing music	30-34
To download files	20-21	To play Music screen	30
When MP3 Player is connected to PC in MTP		To play the music file	30
Mode	21-22	Pause	31
To use the removable disc - In the MSC mode	23	To search the previous or next file	31
To download files	23	Speed search	31
Replacing firmware	24	A-B repeat	31
To upgrade firmware	24	Library	32
		EZ menu	33-34
		Playing video	35-36
		To play video	35
		To Play / Pause	35
		To play the previous or next video file	35
		Speed search of video files	35
		Capture Screen	35
		EZ menu	36



Table of Contents

View Photo File37-39

- View the photo file 37
- To view the previous or next photo 37
- EZ menu 38-39

View Text40-42

- View Text File 40
- View the previous or next text file 40
- EZ menu 41-42

Recording43

- Voice recording 43

FM radio reception (Optional)44-48

- FM broadcasting reception screen 44
- To listen to the FM radio 44
- To search the FM radio stations 45
- To set FM radio channel 45
- To search Channel 46
- To toggle of channel/frequency mode 46
- Set/Cancel Mute 46
- To record FM radio broadcasting 47
- EZ menu 47-48

Setting details49-52

- Setup menu structure 49
- Music 49-50
- Photo 50
- Radio (Optional) 50
- Record 50
- Text 51
- Battery Save 51
- Time 51
- General setting 52
- USB 52

Using the application program53

- LG Media Center 53
- LG Media Center - Firmware Updating 53
- View the manual 53
- Installation of the Adobe Acrobat Reader 53

Troubleshooting54

Specifications55-57

- <http://www.lge.com> 56
- Supported file specification 57



Features

Portable Data Storage

Easy storage and transfer of any file type.

USB 1.1 and 2.0

You can download files at a fast speed.
(USB 2.0 high speed)

FM Reception (Optional) (See on page 13)

With auto frequency selection feature, you can conveniently listen to FM radio broadcasting.

LG 3D Sound

3D sound effects, low tones, and low frequency sound provide greater sound quality.

Text Viewer

Convenient display of text files (.txt) for reading on the go.

Photo Viewer

Store and display photos on the vivid display for entertaining slide shows.

Brilliant 1.77" Color TFT LCD

Photos and video are reproduced in vivid detail on the highly portable 260,000 color TFT LCD.

File Format Flexibility

- Music: MP3, OGG, WMA, WAV (ADPCM), ASF
- Video: LG AVI (The player can be only played the video files downloaded via LG Media Center.)
- Photo: JPG, BMP
- Text: TXT

MTP / MSC Mode

What is the MTP mode? MTP stands for the Media Transfer Protocol. MTP applies the latest technology of Microsoft to support the multimedia devices.

What is the MSC mode? The MSC stands for the Mass Storage Class. The device in the MSC mode functions as if the portable memory.



Important safety instructions

Please follow the safety instructions closely to reduce the risk of accidents or damage to equipment.

Safety instructions are divided into Warning and Attention:

Keep this manual in an easily accessible place.



Warning

Not following the instruction may result in death or serious injury.



Caution

Not following the instruction may result in a light accident or damage.



Warnings



Keep this product away from heat.



Note that the player may malfunction in an electrostatic environment.



Use the AC adapter shipped with the product for the safety purposes.



Don't listen to music for a long time. It may damage your hearing.



Disconnect the AC adapter and the cable in case of a lightning or thunder. Otherwise, an electric shock or fire may occur.



Do not use this product while driving.



Do not insert a metallic object (metal stick or hair pins, etc) or flammable objects in the product. Do not drop such objects on the product either.



Important safety instructions



Cautions



Do not place the player near a magnet or within the magnetic field.



Do not drop an object or give shock on the product.



Clean this product with soft cloth.



Do not operate the product near water, dust, or soot.



Do not disassemble, repair, or remodel the product.



Do not disconnect the USB cable while operating the player after connecting MP3 player to your PC with USB cable. Otherwise, the data may get lost.



Back up important data (Note that the manufacturer is not responsible for the loss of major data caused by your mistake)



Do not place an object on the product.



Keep your computing environment clean and free.



Important safety instructions

Converting video file

MP3 player can be only played the video files downloaded via LG Media Center.

For details about downloading, see [Converting video file] of Help menu on LG Media Center.

USB Mode

MTP Mode

You should download the music file via LG Media Center or Windows Media Player 10.

You should download the video file, photo file, and text file via LG Media Center.

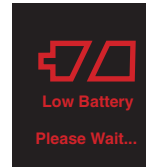
You can copy the data file to Data folder.

MSC Mode

You can copy the Media file to the Removal Disc. (But you should download video files via LG Media Center.)

Supplying Power via USB

- If the battery status is low when connecting MP3 player to your PC with USB cable “Please Wait” message is displayed for a few minutes and then connected.



- If the battery status is fully discharged, the LCD turns off for a few minutes even during connecting.
- If your PC is suspended, MP3 player is also suspended.
- If MP3 player is suspended, the LCD turns off and the charging stops. After an hour, MP3 player turns off automatically.



Important safety instructions

REGULATORY INFORMATION

FCC Part 15

This product has been tested and found to comply with the limits for a Class B digital device, pursuant to Part 15 of the FCC Rules. These limits are designed to provide reasonable protection against harmful interference when the product is operated in a residential installation. This product generates, uses and can radiate radio frequency energy and, if not installed and used in accordance with the instruction manual, may cause harmful interference to radio communications. However, there is no guarantee that interference will not occur in a particular installation. If this product does cause harmful interference to radio or television reception, which can be determined by turning the product off and on, you are encouraged to try to correct the interference by one or more of the following measures:

- Reorient or relocate the receiving antenna.
- Increase the separation between the product and receiver.
- Connect the product into an outlet on a circuit different from that to which the receiver is connected.
- Consult the dealer or an experienced radio/TV technician for help.

FCC WARNING

This equipment may generate or use radio frequency energy. Changes or modifications to this equipment may cause harmful interference unless the modifications are expressly approved in the instruction manual.

You could lose the authority to operate this equipment if an unauthorized change or modification is made.

- Changes or modifications not expressly approved by the party responsible for compliance could void the user's authority to operate the equipment.
- This MP3 player is for use only with UL listed personal computers that have installation instructions detailing user installation of card cage accessory.



FOR HOME OR OFFICE USE



Important safety instructions

CAUTION

PLEASE READ AND OBSERVE ALL WARNINGS AND INSTRUCTIONS IN THIS OWNER MANUAL AND THOSE MARKED ON THE UNIT. RETAIN THIS BOOKLET FOR FUTURE REFERENCE.

This set has been designed and manufactured to assure personal safety. Improper use can result in electric shock or fire hazard. The safeguards incorporated in this unit will protect you if you observe the following procedures for installation, use, and servicing. This unit does not contain any parts that can be repaired by the user.

DO NOT REMOVE THE CABINET COVER, OR YOU MAY BE EXPOSED TO DANGEROUS VOLTAGE. REFER SERVICING TO QUALIFIED SERVICE PERSONNEL ONLY.

1. Read these instructions.
 - All these safety and operating instructions should be read before the product is operated.
2. Keep these instructions.
 - The safety, operating and use instructions should be retained for future reference.
3. Heed all warnings.
 - All warnings on the product and in the operating instructions should be adhered to.
4. Follow all instructions.
 - All operating and use instructions should be followed.
5. Do not use this apparatus near water.
 - For example:near a bath tub, wash bowl, kitchen sink, laundry tub, in a wet basement; or near a swimming pool; and like.
6. Clean only with dry cloth.
 - Unplug this product from the wall outlet before cleaning. Do not use liquid cleaners.
7. Do not block any ventilation openings. Install in accordance with the manufacturers instructions.
 - Slots and openings in the cabinet are provided for ventilation and to ensure reliable operation of the product and to protect it from over- heating.
 - The openings should never be blocked by placing the product on a bed, sofa, rug or other similar surface. This product should not be placed in a built-in installation such as a bookcase or rack unless proper ventilation is provided or the manufacturer instructions have been adhered to.
 - Important Safety Instructions
8. Do not install near any heat sources such as radiators, heat registers, stoves, or other apparatus (including amplifiers) that produce heat.
9. Do not defeat the safety purpose of the polarized or grounding-type plug. A polarized plug has two blades with one wider than the other. A grounding type plug has two blades and a third grounding prong. The wide blade or the third prong are provided for your safety.
 - If the provided plug does not fit into your outlet, consult an electrician for replacement of the obsolete outlet.
10. Protect the power cord from being walked on or pinched particularly at plugs, convenience receptacles, and the point where they exit from the product.



Important safety instructions

11. Only use attachments/accessories specified by the manufacturer.
12. Use only with the cart, stand, tripod, bracket, or table specified by the manufacturer, or sold with apparatus.
 - When a cart is used, use caution when moving the cart/apparatus combination to avoid injury from tip over.
13. Unplug this apparatus during lightning storms or when unused for long periods of time.





14. Refer all servicing to qualified service personnel.

Servicing is required when the apparatus has been damaged in any way, such as power- supply cord or plug is damaged, liquid has been spilled or objects have fallen into the apparatus, the apparatus has been exposed to rain or moisture, does not operate normally, or has been dropped.



Important safety instructions

	CAUTION RISK OF ELECTRIC SHOCK DO NOT OPEN	
CAUTION: TO REDUCE THE RISK OF ELECTRIC SHOCK DO NOT REMOVE COVER (OR BACK) NO USER-SERVICEABLE PARTS INSIDE REFER SERVICING TO QUALIFIED SERVICE PERSONNEL.		

Warning

- To reduce the risk of fire or electric shock, do not expose this appliance to rain or moisture.

Caution

- The appliance is not intended for use by young children or infirm persons without supervision.
- Young Children should be supervised to ensure that they do not play appliance.
- Use of controls or adjustments or performance of procedures other than those specified herein may result in hazardous radiation exposure.

Industry Canada requirement

- This Class B digital apparatus complies with Canadian ICES-003.
- Cet appareil numérique de la classe B est conforme qa la norme à NMB-003 du Canada.

Warning

- The lithium battery contains lithium and can explode if it is not properly handled or disposed of.
- Replace only with a battery of the type recommended by LG.
- Caution: Danger of explosion if battery is incorrectly replaced. Replace only with the same or equivalent type recommended by LG. Dispose of used batteries according to the manufacturer's instructions.



Important safety instructions



Disposal of your old appliance

1. When this crossed-out wheeled bin symbol is attached to a product it means the product is covered by the European Directive 2002/96/EC.
2. All electrical and electronic products should be disposed of separately from the municipal waste stream via designated collection facilities appointed by the government or the local authorities.
3. The correct disposal of your old appliance will help prevent potential negative consequences for the environment and human health.
4. For more detailed information about disposal of your old appliance, please contact your city office, waste disposal service or the shop where you purchased the product.



The working life of this product is 7 years since the date of purchase.



This product is manufactured to comply with the EEC DIRECTIVE 89/336/EEC, 93/68/EEC and 2006/95/EC.



Package contents



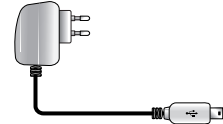
MP3 player



Portable neck strap



USB cable



AC adapter



Software CD



Earphones



Quick Setup Guide

- Contents of the product are subject to change without prior notice for functional improvement.
- FM Radio reception is optional.

Options By Model

Model Names	FM
MF-FM33S	O
MF-FM33E	X

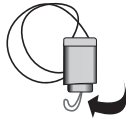


Package contents

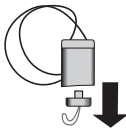
Using the neck strap

The supplied neck strap provides a convenient way to carry your Portable Digital Player.

- 1 Rotate the bottom part of neck strap in the direction of arrow.



- 2 Separate the bottom part of neck strap as shown on the picture.



- 3 Connect the strap to the neck strap holder in the player.



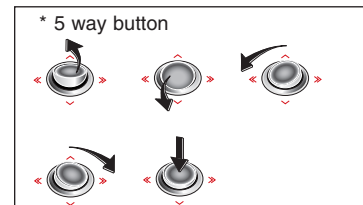
Name of each component

Top, front and bottom views



- 1 Earphones jack
 - 2 Portable neck strap holder
 - 3 USB port
 - 4 LCD
 - 5 * 5 way button (Up,Down,Left,Right, SELECT)
- 1) Up (^) button/Left (<) button
Moves to a high step of home menu, EZ menu and setup menu.
 - Music mode: Increases volume.
 - Video mode: Moves or searches to a previous video. Returns to the beginning of video.
 - 2) Down (v) button/Right (>) button
Moves to a low step of home menu, EZ menu and setup menu.
 - Music mode: Decreases volume.
 - Video mode: Moves or searches to a next video.
 - 3) Left (<<) button/Down (v) button
Moves to a previous step of all menu.
 - Music mode: Moves or searches to a previous track. Returns to the beginning of music.
 - Video mode: Decreases volume.
 - Text mode: Moves to a previous page.

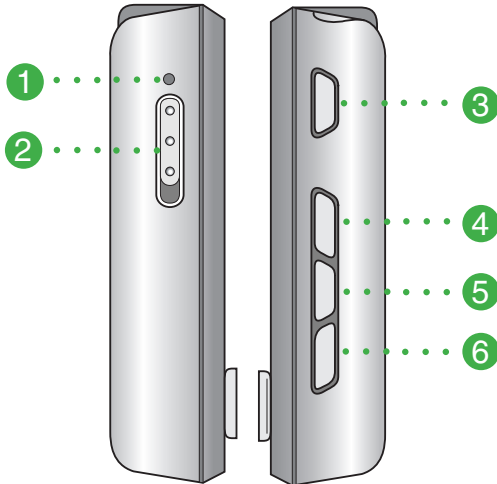
- Photo mode: Moves to a previous photo.
 - Setup mode: Exits the setup mode.
 - Total List mode: Exits the total list mode.
- 4) Right (>>) button/Up (^) button
Moves to a next step of all menu.
 - Music mode: Moves or searches to a next track.
 - Video mode: Increases volume.
 - Text mode: Moves to a next page.
 - Photo mode: Moves to a next photo.
 - Setup mode: Enters the setup mode.
 - Total List mode: Enters the total list mode.
 - 5) SELECT button
Confirms menu selection.
 - 6) RESET button





Name of each component

Right and left views



- 1 Microphone hole
- 2 Hold switch
- 3 Play/Pause (▶||) button (Power on/off)
- 4 ez button
- 5 MENU button
- 6 Record (REC) button / A-B Repeat



Installing software

Before installing the operating program

Check the specifications of your PC before using the Player.

Minimum system requirements

- CD-ROM Drive
- Pentium III or higher level CPU / 128MB or larger memory
- 300MB or larger hard disc space, 800 X 600 mode
- Hi-color (16 bit) or higher level video card, Sound card

Operating environment

- The MTP mode is applied to the PC equipped with Windows XP (SP1) or higher-version OS or the Windows Media Player 10. To the lower-version OS, the MSC mode is applied.

Windows Media Player 10

- You can download the file using Synchronize with Windows Media Player 10 menu.
- For more information, see the Help menu of Windows Media Player 10.

LG Media Center

- Windows 2000/XP
- Windows Media Player 10 or higher / Internet Explorer 6.0
- Windows Media Player or Internet Explorer will be automatically installed during installation of the LG Media Center. Internet connection must be connected in order to install Internet Explorer.
- The MTP mode is recommended for the LG Media Center.



Installing software

LG Media Center

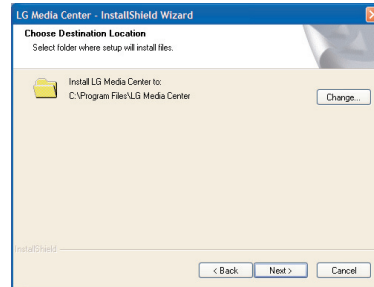
- 1 Insert the operation program CD into the CD-ROM.
- 2 Select the LG Media Center.



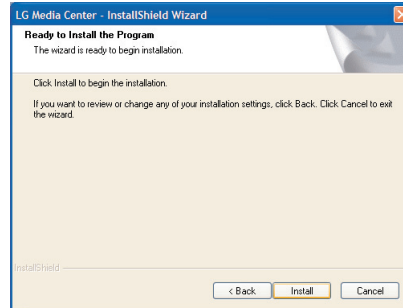
- Refer to page 53 for more information.

- 3 Follow the displayed instructions.

- 4 Read the License Agreement. Select the check box, and click on [Next] button.
- 5 Select the installation path, and click on [Next] button.



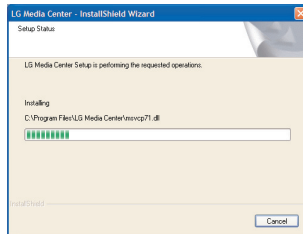
- 6 Click on [Install] button to start installation.



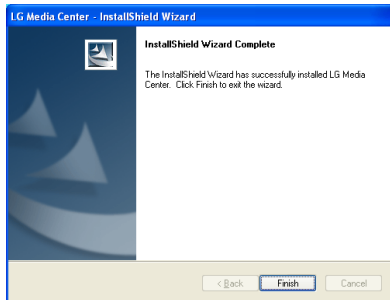


Installing software

- 7 During installation of the LG Media Center, you can install the Windows Media Player and the Internet Explorer for the operating environment.



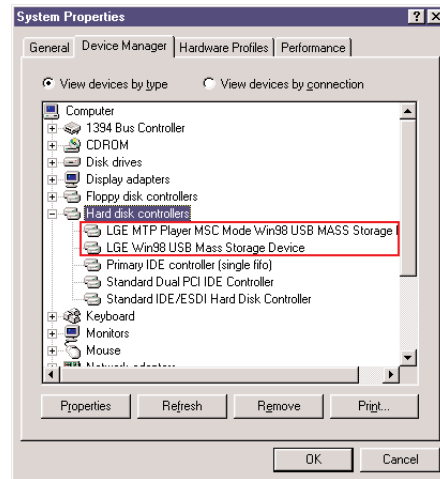
- 8 After finishing the installation, click on [Finish] button.



- 9 Click on "Start" > "All Programs" > "LG Media Center" > "LG Media Center" to start the program.

Installing Win98SE MSC Device Driver

- 1 Execute LGE203053 inst.bat under Drivers > Win98SE folder in the CD-ROM.
- 2 Reboot the PC, and connect the MP3 player to the USB port.
- 3 The installed device driver can be used as a portable disc in the Windows Explorer.
- 4 Check the installation status in System Properties as shown below.





Connecting to the PC

To use a portable media device - In the MTP mode

The manufacturer is not responsible for the data loss caused by your mistake.

What is the MTP mode?

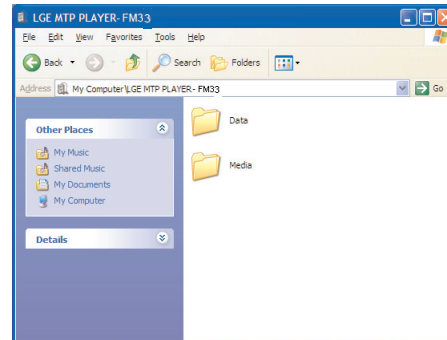
The MTP stands for the Media Transfer Protocol. It applies the latest technology defined by Microsoft to support multi-media devices (In the MTP mode, the player will be recognized as a mobile device, not a mass storage, and will inter-work with the Windows Media Player 10).

• MTP mode

- Windows XP / SP1 or higher OS, and Windows Media Player 10.
- To use the MSC mode, select the MSC mode in the USB Mode menu.
- If the Windows OS does not support the MTP, the player will function in the MSC mode although the player is set in the MTP mode (Select the MSC mode for the USB in the setup menu for Windows 98 SE/ME).

To download files

- 1 Select the MTP mode from the USB mode of the MP3 player.
 - The default is the MTP mode.
- 2 Connect one end of the USB cable to the USB port of the PC and the other to the USB port of the player.
 - Check whether both ends of the cable are correctly plugged in.
- 3 Check whether a new drive has been added in the Windows Explorer in the PC.
 - The drive name may differ depending on the OS.
 - ASF Files can only be downloaded by Windows Media Player 10 or MSC Mode.
- 4 Select the file to store, and copy it to the folder of the portable media device.





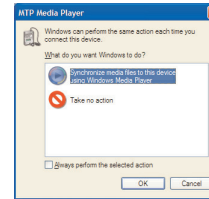
Connecting to the PC

Notes

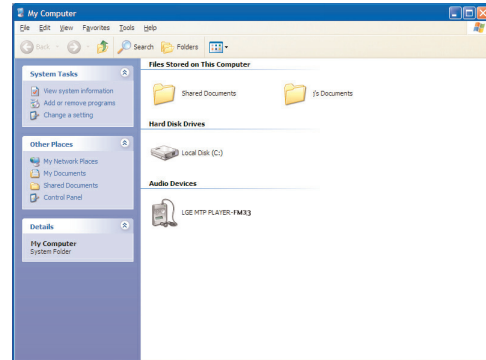
- Disconnecting the USB cable while the file is being copied may cause malfunctioning of the player.
- The player will be charged when connected to the PC through the USB cable.
- Copy music files (MP3, WMA, ASF and WAV (ADPCM)) to the media folder (Convenient synchronization is possible through the LG Media Center or Windows Media Player 10).
- Download video, photo (JPEG, BMP) and text (TXT) files through the LG Media Center.
- The player can play only files downloaded from LG Media Center. (Purchased video, photo (JPEG, BMP), and text (TXT) files)
- The data folder is supported only for the portable device, and is not displayed on the MP3 player.
- After the file is copied, the folders will be created in order of artist (or intellectual property right holder) and the album title contained in ID3TAG information of the music file. In the player, select Home menu > Total List > Contents to view the playing list. In the MSC mode, the playing list is not supported.
- The downloaded music file is arranged in order of the name on the [Music] menu and the copied file on the [Video], [Photo], [Text] and [Total List] menu. If there is the information of ID3 TAG track number on the [Artist], [Album] and [Genre] menu, the file is arranged in order of track number.
- ASF Files can only be downloaded by Windows Media Player 10 or MSC Mode.
- OGG Files can only be downloaded by MSC Mode.

When MP3 Player is connected to PC in MTP Mode

1 When MP3 Player is connected to PC.



2 When My Computer is clicked on and [Take no action] is selected.

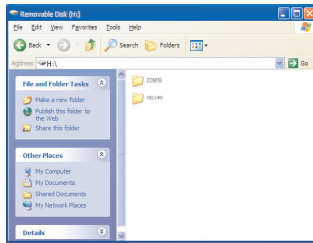




Connecting to the PC

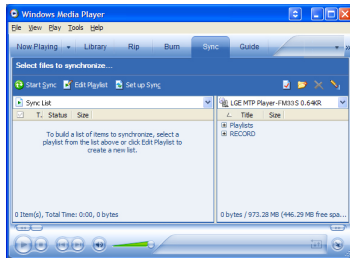
3 When Audio Device is selected.

- Data folder: You can download or upload all data files.
- Media folder: You can download only the file that Windows Media Player 10 supports.

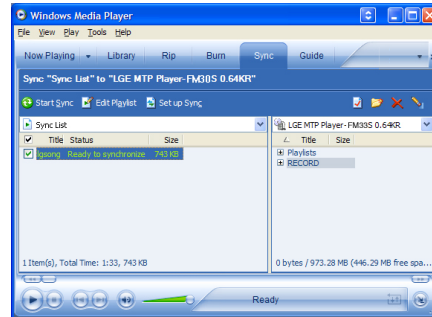


4 Upon manual setup

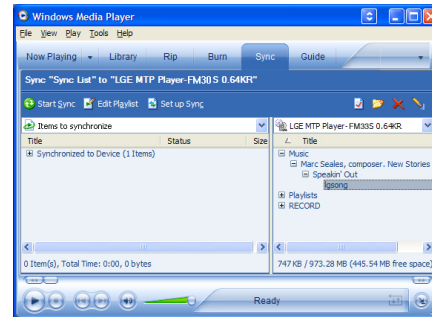
- When [Synchronize Media File with Device] has been selected or the Windows Media Player 10 is opened (The data cannot be uploaded to the PC from the Windows Media Player 10)



5 When the files to be synchronized are dragged to the left window



6 When files are synchronized and a new folder is created.





Connecting to the PC

To use the removable disc - In the MSC mode

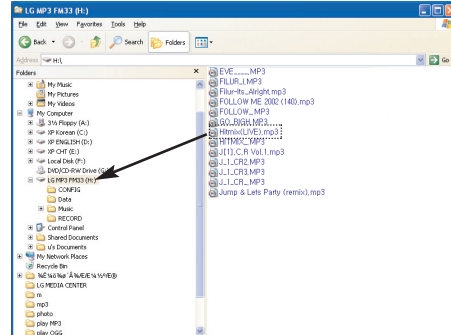
What is the MSC mode?

The MSC stands for the Mass Storage Class. The device in the MSC mode functions as if the portable memory.

To download files

- 1 Select the MSC mode from the USB Mode menu in the MP3 player.
 - For more information, see the setup menu tree screen (See on page 49).
- 2 Connect one end of the USB cable to the USB port of the PC and the other to the USB port of the player.
 - Check whether both ends of the cable are correctly plugged in.
- 3 Check whether a new drive has been added in the Windows Explorer in the PC.
 - The drive name may differ depending on the OS.

- 4 Drag the file to copy to the removable disc drive.



- Disconnecting the USB cable while the file is being copied may cause malfunctioning of the player.
- The player will be charged when connected to the PC through the USB cable.
- Download video files from LG Media Center.
- Download the JANUS DRM-applied files through the Windows Media Player 10 or LG Media Center (MTP Mode only)
- Download X-Sync DRM-applied files through the LG Media Center.



Replacing firmware

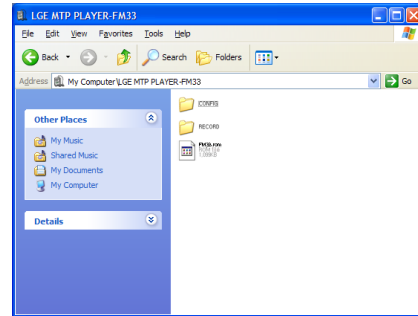
To upgrade firmware

You can update the firmware for addition and change of features of the player and for functional improvement.

- 1 Check the model number at the company website, and download the latest version.
 - <http://www.lge.com> > Support > Download > Software (The contents may differ depending on the website.)
- 2 Decompress the downloaded files. Then, FM33.rom file will be displayed.
- 3 Connect the USB cable to the MP3 player and the PC.
- 4 Check whether a new drive has been added in the Windows Explorer in the PC.
 - The drive name may differ depending on the OS.

- 5 Select FM33.rom file and copy it to the newly added drive.

- In the MSC mode: Highest root
- In the MTP mode: Data folder



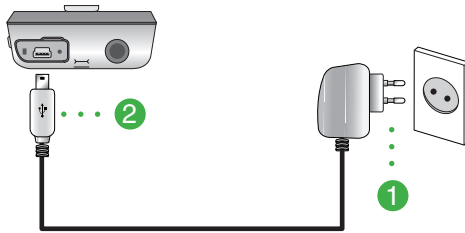
- 6 To safely remove the device, remove the USB cable.
- 7 When "Firmware upgrade?" message is displayed, click on ►|| button.
- 8 The firmware updating progress bar will be displayed. After completion, the power will be automatically turned off.
 - Wait till the power is automatically turned off.
- 9 Turn on the MP3 player, and check the updated version of firmware. (Home menu > Setup > General > System Info).



Installation and connection

To use the AC adapter

- 1 Connect the AC adapter to the AC outlet.
- 2 Connect the USB cable to the USB port of the player.




To Charge the battery

This player will be automatically charged when power source is connected.

- Charging time: Three hours (AC adapter)
- Playback time
 - Music file: About 35 hours (for 128Kbps/ 44.1KHz EQ normal)
 - Video file: About 8 hours
 - Viewing Photos while playing music : About 8 hours
- On the display of the player, the charging status will be displayed as follows:



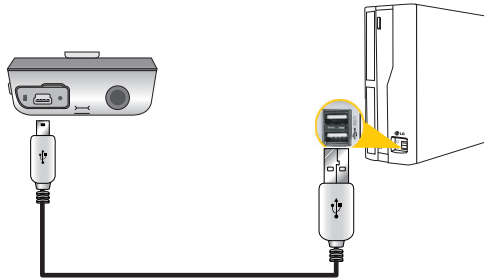
- After charging is completed,  will appear.
- Do not disconnect AC Adapter while the player is starting up. The data may get lost.
- Battery may completely discharged first time you purchase the product. Charge the battery first.



Installation and connection

To connect the USB cable

- 1 Connect one end of the USB cable to the USB port of the PC and the other to the USB port of the player.
 - Check whether both ends are correctly plugged in.



- 2 If the USB device is normally recognized after the cable is connected, the following will be displayed.
 - The version is displayed on the LCD.



- 3 In case of a correct connection, an icon will be displayed on the task bar of the PC.
 - The icon shapes on the task bar may differ depending on the OS of the PC.




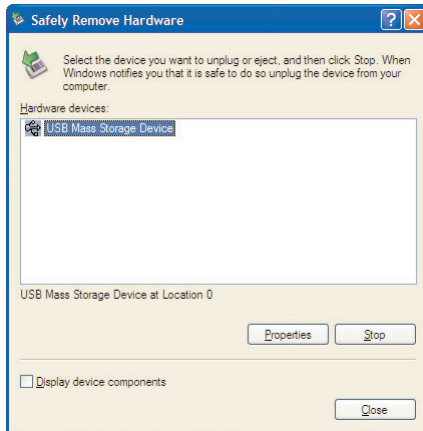
Installation and connection

To disconnect the USB Cable (In the MSC mode)

This feature is to safely remove the player from the PC after uploading or downloading the files.

- Disconnect from the PC upon the connection in the MTP mode.

- 1 Double-click on Remove Hardware  icon on the task bar of the PC.
- 2 Click on [Stop] button when the window appears.



- 3 Click on [OK] button.



- 4 After a message that the large-capacity USB storage can be safely removed is displayed, remove the player from the PC.
 - If the USB cable is disconnected while storing or deleting the file, the data may get lost.



Basic operation

To Turn on/off the power

Press and hold ►|| button for about 2 seconds until the player is turned on.

Press and hold ►|| button for about 2 seconds again to turn off the player.

- Downloading files in the MSC mode may take time for rebuilding depending on the number of files.







Power On



Power Off

Lock feature

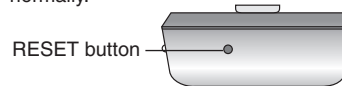
This feature locks the player to prevent it from operating when you accidentally press a button.

- 1 Slide  switch in arrow direction to lock the player.
 - Upon locked status,  will be displayed on the LCD. Upon pressing of each button,  will appear for two seconds and disappear.
- 2 Slide  switch to the opposite of arrow direction to unlock the device.

Reset feature

This feature is to reset the player if the player is not operated normally.

- 1 Press the RESET button when the player is not operated normally.



- 2 After the power is turned off, press and hold ►|| button for about two seconds. Then, the power will be turned on.
 - When the player is connected to the AC adapter or the player is connected to PC with USB cable, it will be automatically turned on.
 - Reset function initializes setting values.

Volume control

Press ^ or v button to control the volume.

- The volume level can be adjusted by 40 steps. (Min, 1 - 39, Max)
- If you press and hold ^ or v button for about 2 seconds, the volume levels will decrease or increase by 2 steps.
- The default volume is 20.
- To protect hearing, the maximum volume is set as 25 when you turns on the player.

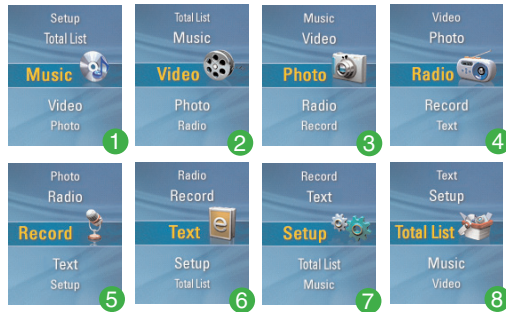


Basic operation

Home menu screen

You can operate various features by using the Home menu.

* Home menu screen varies according to product models
(See on page 13)



- 1 Music: Plays the music files.
- 2 Video: Plays the video files.
- 3 Photo: Plays the image files.
- 4 Radio: Receives and records FM broadcasting.
(Optional according to model)
- 5 Record: Records the voice.
- 6 Text: Displays the text file.
- 7 Setup: Sets the operating environment of the player.
- 8 Total List: Displays the playable total list.

General operations of Home menu

- 1 Press and hold MENU button for about 2 seconds to display the Home menu.
- 2 Press \wedge or \vee button to select the desired menu.
- 3 Press \gg or SELECT button to enter submenu.
- 4 Press \ll or MENU button to return to the previous menu.



Playing music

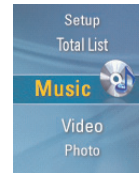
To play Music screen



- 1 Display
- 2 Music information display
- 3 Playing time bar
- 4 Playback time
- 5 Battery status
- 6 Current time
- 7 Alarm setting display
- 8 A-B Repeat display

To play the music file

- 1 Move to the Home menu, and press \wedge or \vee button to select [Music] menu.



- 2 Press \gg or SELECT button to enter the submenu.
- 3 Press \wedge or \vee button to select the music file.
 - The supported music format : See on page 57.
- 4 Press \gg or SELECT button to play.

Note:

You can play other music file on the music file list while playing a music.

1. Press MENU button during playback.
 - The music file list appears.
2. Press \wedge or \vee button to select the music file. And then press \gg or SELECT button to play the selected file.
 - Press and hold MENU button for 2 seconds to display home menu.
 - Select the "Now Playing" or press $\blacktriangleright\parallel$ button to return to the playing mode in [Library].



Playing music

Pause

- 1 Press ►|| button during playback.
- 2 Press ►|| button again to resume playback.

To search the previous or next file

Press ◀◀ or ▶▶ button to go to the previous or next music.

- If you press ◀◀ button after five seconds of playing time, the current music will be played from the beginning.
- If you press ◀◀ button within five seconds of playing time, the previous music will be played from the beginning.

Speed search

Press and hold ◀◀ or ▶▶ button for two seconds during playback.

- It skips to the previous next or file from the beginning or the end of the music.

A-B repeat

This feature can only set the current playing music.

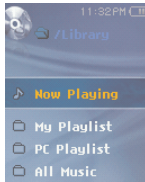
- 1 To set the starting point during playback, press REC button.
 - **A*** icon appears on the LCD.
- 2 To select the ending point, press REC button again. Then, the Repeat feature will be set.
 - **A*B** icon appears on the LCD.
- 3 To cancel Repeat feature, press REC button again.
 - **A*B** icon disappears on the LCD.



Playing music

Library

If you download the music file from internet or PC, the MP3 player rebuilds them.



Now Playing

This feature displays the playing mode screen of current music file.

My Playlist

You can select and manage your own playlist.

1 Select the music you want to add on the [My Playlist] of [Library] list and then press ez button.

- 🎵 icon changes to 📁 icon and it is added in [My Playlist].
- It can add one at a time.

2 You can confirm and play the added music in [My Playlist].

3 Press ez button again to delete the added music in [My Playlist].

- 📁 icon changes to 🎵 icon.
- When the list is updated, the my playlist will be automatically disabled.

PC Playlist

You can play the MP3 player automatically the playlist created in the WMP 10 (Windows Media Player 10) or the LG Media Center through the Auto Sync mode.

- When the playlist and corresponding files are unchecked in the Auto Sync mode, music will be deleted in the MP3 player. It is recommended to keep all Music files always checked.

All Music

Plays the total music in [Library].

Artist

Plays the music by artist.

Album

Plays the music by album.

Genre

Classifies and plays music by genre.

Recorded File

Plays the radio recording file (Optional) or voice recording file.



Playing music

EZ menu

You can set the desired function or switch to the other mode using EZ menu.

- 1 Press ez button to display EZ menu screen while playing or pausing.



- 2 Press \wedge or \vee button to move to the desired item.
- 3 Press \gg or SELECT button to move to the submenu.
- 4 Press \gg or SELECT button after changing the setting by pressing \wedge or \vee button.
 - Press \lll button to exit without change.
- 5 Press ez button to exit the EZ menu.

Bookmark Set/Move/Cancel

You can move to the point you set while playing the music.

- 1 ez button > [Bookmark] > [Set]/[Move]/[Cancel]
 - If the bookmark is not set, [Set] menu will only appear.

- 2 Once the bookmark is set, the menu will be automatically changed into [Move] and you can only change the bookmark to [Cancel/Move].

- By selecting [Move], you can go to the bookmarked point.

- 3 If the bookmark is canceled, the menu will be automatically changed to [Set].

- When the list is updated, the bookmark will be automatically disabled.

Media selection

You can view the photo or text while listening to the music simultaneously.

- 1 ez button > [Media] > [Photo]/[Text]

- Press SELECT button to move between the full view and four-division view in the photo mode.
- You can control the volume while viewing the photo or text. (Only in playing the music)
- If there is no photo or text, "No File" message is displayed.
- If the [Media] is set to the [Photo]/[Text], [Media] will be automatically changed to [Music].

- 2 ez button > [Music] > [Back]/[Cancel]/[Next]/[Previous]

- [Back]: You can move to the music mode.
- [Cancel]: The music mode will be turned off.
- [Next]: You can play the next music.
- [Previous]: You can play the previous music.



Playing music

Play Mode

- 1 ez button > [Play Mode] > [Play All]/[Repeat All]/ [Random Play]/[Random Repeat]/[Repeat One]
- [Repeat One]: Plays the current file repeatedly.
 - [Play All]: Plays the music in order within the selected folder.
 - [Repeat All]: Plays the music in the repeatedly within the selected folder.
 - [Random Play]: Plays the music randomly within the selected folder.
 - [Random Repeat]: Repeats the music randomly within the selected folder.

Brightness

You can adjust the brightness level from 1 to 4.

- 1 ez button > [Brightness] > [1 - 4]
- The default brightness is 3.

EQ

You can set the sound effect.

- 1 ez button > [EQ] > [AUTO EQ]/[NORMAL]/[POP]/[ROCK]/ [R&B/SOUL]/[HIPHOP/RAP]/[JAZZ]/[CLASSICAL]/[DANCE]/[LIVE]/[USER EQ]
- If you set the EQ, 3D sound is automatically changed to [Off].
 - [USER EQ]: Home menu [Setup] > [Music] > [Sound Effect] > [EQ]

3D Sound

You can experience 3D sound effects.

- 1 ez button > [3D Sound] > [Off]/[3D Expander]/[Stadium]/ [Concert Hall]/[Club]/[Room]/[Bass Boost]/[X-live]
- If you set the 3D sound, EQ is automatically changed to [NORMAL].
 - If OGG file is Q10 500Kbps or higher and VBR file, 3D sound effects may be small.

Information

Displays the information of the music file.

- 1 ez button > [Information] > [View]
- You can check the information of file name, play time, bitrate, file size, sampling frequency and CODEC.

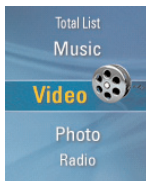


Playing video

To play video

MP3 player can be only played the video files downloaded via LG Media Center. For details about downloading, see [Converting video file] of Help menu on LG Media Center.

- 1 Move to the Home menu, and press \wedge or \vee button to select [Video] menu.



- 2 Press \gg or SELECT button to enter the [Video] menu.
- 3 Press \wedge or \vee button to select the video file.
- 4 Press \gg or SELECT button to play.
 - Video clips are played in "Repeat Folder" mode by default.
- 5 Enter to the video list screen if MENU button is pressed while playing the video.
 - Press and hold MENU button for two seconds to enter home menu.
 - Press $\blacktriangleright\parallel$ button to return to the playing mode from video list screen.

To Play / Pause

- 1 To pause, press $\blacktriangleright\parallel$ button once.
- 2 Press $\blacktriangleright\parallel$ button again to resume playing.
 - The video file will be displayed on the horizontal screen.

To play the previous or next video file

- 1 Press $<$ or $>$ button to select the previous or next file.
 - Moving to the previous/next file and playing it.
 - If you press $<$ button after six seconds of playing time, the current video file will be played from the beginning.
 - If you press $>$ button within six seconds of playing time, the previous video file will be played from the beginning.

Speed search of video files

- 1 Press and hold $<$ or $>$ button for more than two seconds while playing video file.
 - The file will start playing as soon as you stops pressing the button.
 - It moves to the next video file in the ending point but does not move to the previous video file in the beginning point.

Capture Screen

- 1 After pausing of the video file, press REC button to store the image on the display.
- 2 Check the stored screen in Photo menu.
 - A file named P060825_0001 (Year Month date_order) will be created.

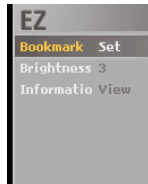


Playing video

EZ menu

You can set the desired function or switch to the other mode using EZ menu.

- 1 Press ez button to display EZ menu screen while playing or pausing.



- 2 Press \wedge or \vee button to move to the desired item.
- 3 Press \gg or SELECT button to move to the submenu.
- 4 Press \gg or SELECT button after changing the setting by pressing \wedge or \vee button.
 - Press \ll button to exit without change.
- 5 Press ez button to exit the EZ menu.

Bookmark Set/Move/Cancel

You can move to the point you set while playing the video.

- 1 ez button > [Bookmark] > [Set]/[Move]/[Cancel]
 - If the bookmark is not set, [Set] menu will only appear.
- 2 Once the bookmark is set, the menu will be automatically changed into [Move] and you can only change the bookmark to [Cancel/Move].
 - By selecting [Move], you can go to the bookmarked point.
- 3 If the bookmark is canceled, the menu will be automatically changed to [Set].
 - When the list is updated, the bookmark will be automatically disabled.

Brightness

You can adjust the brightness level from 1 to 4.

- 1 ez button > [Brightness] > [1 - 4]
 - The default brightness is 3.

Information

Displays the information of the video file.

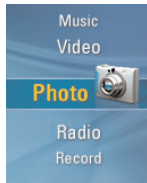
- 1 ez button > [Information] > [View]
 - You can check the information of file name, play time and volume.



View Photo File

View the photo file

- 1 Move to the Home menu, and press \wedge or \vee button to select [Photo] menu.



- 2 Press \gg or SELECT button to enter the [Photo] menu.
- 3 Press \wedge or \vee button to select the photo file.
 - The supported photo file format : JPG, BMP
- 4 Press \gg or SELECT button to play.
 - Press SELECT button to move between the full view and four-division view in the photo mode.
 - Enter to the photo list screen if MENU button is pressed while viewing the photo.
 - Press and hold MENU button for two seconds to enter to home menu.
 - Press $\blacktriangleright\parallel$ button to return to the playing mode from photo list screen.
 - Large-sized photos may not be opened or played.
 - In case of BMP file, only 24-bit colors will be supported (Only the BMP files downloaded in the MSC mode are supported).

- In case of the JPG file downloaded from the LG Media Center, all photos can be viewed regardless of the size. It is recommended to download JPG files from the LG Media Center for quicker display.

To view the previous or next photo

Press \ll or \gg button to view the previous or next photo.

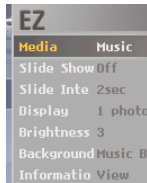


View Photo File

EZ menu

You can set the desired function or switch to the other mode using.

1 Press ez button to display EZ menu screen while viewing photo file.



2 Press \wedge or \vee button to move to the desired item.

3 Press \gg or SELECT button to move to the submenu.

4 Press \gg or SELECT button after changing the setting by pressing \wedge or \vee button.

- Press \ll button to exit without change.

5 Press ez button to exit the EZ menu.

Media selection

You can listen to music or radio while viewing the photo file. (FM radio reception is optional.)

1 ez button > [Media] > [Music]/[Radio]

- If the [Media] is set to the [Music]/[Radio], the [Media] will be automatically changed to [Music]/[Radio].
- You can control the volume level while viewing the photo.

2 ez button > [Music]/[Radio] > [Back]/[Cancel]/[Next]/[Previous]

- [Back]: You can go to the [Music]/[Radio].
- [Cancel]: The [Music]/[Radio] mode will be turned off, the mode will be changed to [Media].
- [Next]/[Previous]: Plays the previous or next music in case of [Music] mode.
Plays the previous or next channel if there are stored channels in case of [Radio] mode.
Displays the [Cancel] or [Back] the if there are no stored channels in case of [Radio] mode.



View Photo File

Slide Show

You can set to On/Off the slide show.

1 ez button > [Slide Show] > [On]/[Off]

- [On]: Executes the slide show.
- [Off]: Turns off the slide show.
- Press **▶||** button to pause or restart while executing the slide show.
- LCD does not turn off while executing the slide show.

Slide Interval

1 ez button > [Slide Interval] > [2sec]/[3sec]/[4sec]/[5sec]

- You can set the slide show interval.

Display

1 ez button > [Display] > [1 photo]/[4 photos]

- [1 photo]: Displays 1 photo.
- [4 photos]: Displays 4 photos.
- Press SELECT button to move between the full view and four-division view in the photo mode.

Brightness

You can adjust the brightness level from 1 to 4.

1 ez button > [Brightness] > [1 - 4]

- The default brightness is 3.

Background

You can select photo file to music background on the photo mode.

1 ez button > [Background] > [Music Background]

Information

Displays the information of the photo file.

1 ez button > [Information] > [View]

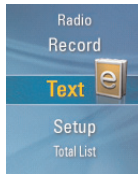
- You can check the information of file name, file size and volume.



View Text

View Text File

- 1 Move to the Home menu, and press \wedge or \vee button to select [Text] menu.



- 2 Press \gg or SELECT button to enter the [Text] menu.
- 3 Press \wedge or \vee button to select the text file.
- 4 Press \gg or SELECT button to view.
 - Enters to the text list screen if MENU button is pressed while viewing the text.
 - Press and hold MENU button for two seconds to enter to home menu.
 - Press $\blacktriangleright\parallel$ button to return to the playing mode from text list screen.
 - It may take time to load according to a large-sized text file.
 - In case the language code is not correct, the characters of the text file may be displayed broken or may not be displayed.

View the previous or next text file

- 1 Press \ll or \gg button to go to the previous or next page.
 - The text file moves to the first page when pressing \gg button in the last page.
 - The text file moves to the last page when pressing \ll button in the first page.
- 2 Press and hold \ll or \gg button for two seconds. Then, the previous/next document will be opened.
 - The player supports maximum 99999 pages.
 - If you selects the automatic page moving at the EZ menu, the page will be automatically moved at every interval defined.

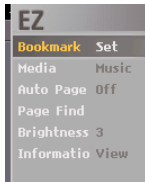


View Text

EZ menu

You can set the desired function or switch to the other mode using EZ menu.

- 1 Press ez button to display EZ menu screen while viewing text file.



- 2 Press \wedge or \vee button to move to the desired item.
- 3 Press \gg or SELECT button to move to the submenu.
- 4 Press \gg or SELECT button after changing the setting by pressing \wedge or \vee button.
 - Press \ll button to exit without change.
- 5 Press ez button to exit the EZ menu.

Bookmark Set/Move/Cancel

You can move to the point you set while playing the text.

- 1 ez button > [Bookmark] > [Set]/[Move]/[Cancel]
 - If the bookmark is not set, [Move]/[Cancel] is not set.
- 2 The bookmark is changed to [Set1] when you press \gg or SELECT button on the [Set] mode.
 - Press \gg or SELECT button to save the setting.
 - Press \ll button to exit without change.
 - You can set the bookmark up to 10.
 - When the list is updated, the bookmark will be automatically disabled.
 - The bookmark is changed to [Move1]/[Cancel1] when you press \gg or SELECT button on the [Move]/[Cancel] mode.
- 3 Select bookmark number to move or cancel and then the bookmark is moved or canceled.



View Text

Media selection

You can listen to music or radio while viewing the text file. (FM radio reception is optional.)

1 ez button > [Media] > [Music]/[Radio]

- If the [Media] is set to the [Music]/[Radio], the [Media] will be automatically changed to [Music]/[Radio].

2 ez button > [Music]/[Radio] > [Back]/[Cancel]/[Next]/[Previous]

- [Back]: You can go to the [Music]/[Radio].
- [Cancel]: The [Music]/[Radio] mode will be turned off, the mode will be changed to [Media].
- [Next]/[Previous]: Plays the previous or next music in case of [Music] mode.
Plays the previous or next channel if there are stored channels in case of [Radio] mode.
Displays the [Cancel] or [Back] the if there are no stored channels in case of [Radio] mode.

Auto Page

1 ez button > [Auto Page] > [Off]/[1sec] - [10sec]

- The page will be automatically moved according to the setting.

Page Find

1 ez button > [Page Find]



2 Press << or >> button to move the page. Then input the page count by pressing ^, v .

3 Press << or >> button to select Ok. Then press SELECT button.

- Moves to the corresponding page.

Brightness

You can adjust the brightness level from 1 to 4.

1 ez button > [Brightness] > [1 - 4]

- The default brightness is 3.

Information

Displays the information of the text file.

1 ez button > [Information] > [View]

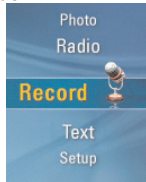
- You can check the information of file name, file size, page and volume.



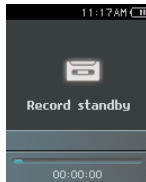
Recording

Voice recording

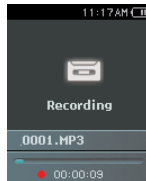
- 1 Move to the Home menu, and press \wedge or \vee button to select [Record] mode.



- 2 Press \gg or SELECT button to open the recording standby screen.



- 3 Press REC button to start recording.



- 4 To pause recording, press $\blacktriangleright\parallel$ button.



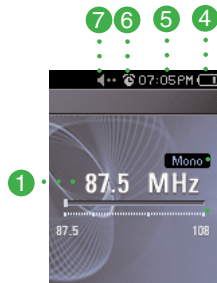
- 5 Press \ll or \gg button to select "End", and press \gg or SELECT button.
 - Select "Continue" to resume recording.
 - The recorded files will be stored under Record folder named V060925_0001 (Year Month Date_Order)
- 6 To stop recording, press REC button.
 - Files less than one second long will not be stored.
- 7 Refer to "Recorded file" on page 32 to play prerecorded files.
 - Files less than one second long will not be stored.



FM radio reception (Optional)

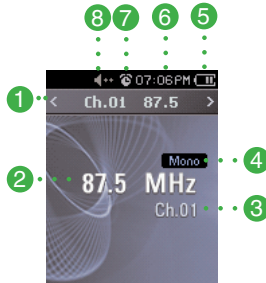
FM broadcasting reception screen

* Optional according to model. (See on page 13)



Non Preset Mode

- 1 FM radio frequency display
- 2 FM radio frequency display bar
- 3 Mono/Stereo display
- 4 Battery status
- 5 Current time
- 6 Alarm setting display
- 7 Mute display

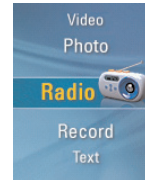


Preset Mode

- 1 Current channel/ FM radio frequency display
- 2 FM radio frequency display
- 3 Channel no. (Channel mode)
- 4 Mono/Stereo display
- 5 Battery status
- 6 Current time
- 7 Alarm setting display
- 8 Mute display

To listen to the FM radio

1 Move to the Home menu, and press \wedge or \vee button to select [Radio] menu.



2 Press \gg or SELECT button to open the reception screen.



FM radio reception (Optional)

To search the FM radio stations

Manual Search

1 In Non Preset Mode: Press ◀ or ▶ button to gradually increase/decrease the frequency.

Automatic search

1 In Non Preset Mode: Press and hold ◀ or ▶ button for two seconds to automatically search the stations.

- Press any button to stop automatic search.

2 When the frequency is searched, the channel will be fixed and the corresponding frequency will be automatically received.

- Reception may be weak in some areas.

- As earphones function as antennas, only LG Electronics' earphones guarantees the reception quality.

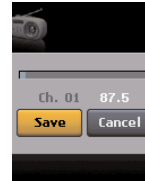
To set FM radio channel

Manual channel setting

1 Press ez button while listening to the radio and then EZ menu screen displays.

2 Press ^ or v button to move to [Channel Setting] and then press >> or SELECT button.

3 Press ^ or v button to select to [Manual] and then press >> or SELECT button.



4 Press ^ or v button to control the frequency.

5 Press ◀ or ▶ button to select "Save". Then press SELECT button to save the channel.

- By pressing ^ or v button up and down, you can change the frequency and save maximum 20 channels.

- You can delete the channel using EZ menu.

6 Select "End" to end manual channel setup.

Automatic Channel Setting

1 Press ^ or v button to move to [Channel Setting] and then press >> or SELECT button.

2 Press ^ or v button to select to [Auto] and then press >> or SELECT button.

- You can save maximum 20 channels and existing channels will be deleted.

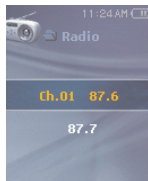
- In an area with weak reception, the detected channels may be less than 20.



FM radio reception (Optional)

To search Channel (Preset Mode)

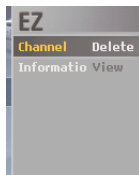
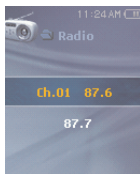
- 1 Press MENU button while listening to the radio.
 - The list of saved channels will appear.



- 2 Press \wedge or \vee button to select channel.
- 3 Press \gg or SELECT button.
 - Radio reception screen displays.

EZ menu

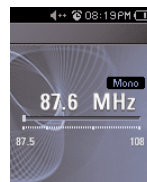
- 1 Press ez button to display EZ menu screen in the list of saved channels.



- Channel : Deletes the selected channel.
- Information : Displays information of the selected channel.

To toggle of channel/frequency mode

- 1 Press ez button while listening to the radio and then EZ menu screen displays.
- 2 Press \wedge or \vee button to move to [Radio Mode] and then press \gg or SELECT button.
- 3 Press \wedge or \vee button to select to [Preset Mode] or [Non Preset Mode] and then press \gg or SELECT button.



Non Preset Mode



Preset Mode

Set/Cancel Mute

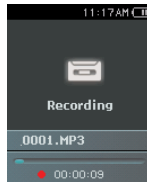
- 1 Press $\blacktriangleright\parallel$ button while listening to the radio. Then, the sound will become mute.
 - Mute icon will appear and the sound will become mute.
- 2 Press $\blacktriangleright\parallel$ button to return to the normal.
 - Mute icon will disappear.



FM radio reception (Optional)

To record FM radio broadcasting

- 1 To record while listening to the radio, press REC button.
 - The recording time will be displayed and the recording will start.

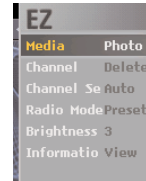


- 2 Press ►|| button to pause.
- 3 Press ◀ or ▶ button to select Continue or End. Then, press ▶▶ or SELECT button.
 - If you select Continue, recording will be resumed.
 - The recorded files will be saved under Record folder named F060925_0004.MP3 (Year Month Date_Order)
- 4 To stop recording, press REC button.
 - Files less than one second long will not be saved.
- 5 Move to "Recorded file" menu to play.
 - Home menu > [Music] > [Recorded file]
(Refer to page 32.)

EZ menu

You can set the desired function or switch to the other mode using EZ menu.

- 1 Press ez button to display EZ menu screen while listening to the radio.



- 2 Press ^ or v button to move to the desired item.
- 3 Press ▶▶ or SELECT button to move to the submenu.
- 4 Press ▶▶ or SELECT button after changing the setting by pressing ^, v button.
 - Press ◀ button to exit without change.
- 5 Press ez button to exit the EZ menu.



FM radio reception (Optional)

Media selection

You can view to photo or text while listening to the radio.

1 ez button > [Media] > [Photo]/[Text]

- If the [Media] is set to the [Photo]/[Text], the [Media] will be automatically changed to [Photo]/[Text].

2 ez button > [Photo]/[Text] > [Back]/[Cancel]/[Next]/[Previous]

- [Back]: You can go to the [Radio].
- [Cancel]: The [Radio] mode will be turned off, the mode will be changed to [Photo]/[Text].
- [Next]: You can listen to the next channel.
- [Previous]: You can listen to the previous channel.

Channel

You can save or delete the channel.

1 ez button > [Channel] > [Delete]/[Save]

- You can only delete the channel on the [Preset Mode].
- You can only save the channel on the [Non Preset Mode].

Channel Setting

You can automatically/manually save channel.

1 ez button > [Channel Setting] > [Auto]/[Manual]

Radio Mode

You can select the channel mode or frequency mode.

1 ez button > [Radio Mode] > [Preset Mode]/[Non Preset Mode]

Brightness

You can adjust the brightness level from 1 to 4.

1 ez button > [Brightness] > [1 - 4]
- The default brightness is 3.

Information

Displays the information of the radio frequency.

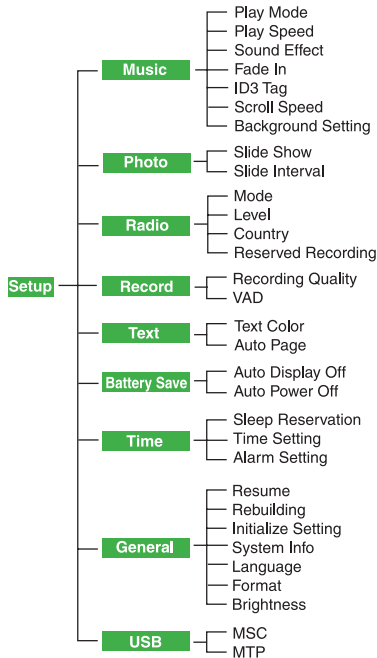
1 ez button > [Information] > [View]



Setting details

Setup menu structure

* Menu tree structure varies according to product models
(See on page 13)



Music

• Play Mode

- [Repeat One]: Plays the current file repeatedly.
- [Play All]: Plays the music in order within the selected folder.
- [Repeat All]: Plays the music in the repeatedly within the selected folder.
- [Random Play]: Plays the music randoml within the selected folder.
- [Random Repeat]: Repeats the music randomly within the selected folder.

• Play Speed: You can set the playing speed of MP3 files.

- You can select [0.3 Times], [0.5 Times], [1 Time], [1.5 Times], and [2 Times].
- The default value is X1.
- MP3 files sampled less than 32KHz can support only X1.

• Sound Effect

- EQ: You can set the sound effect.
(AUTO EQ, NORMAL, POP, ROCK, R&B/SOUL, HIPHOP/RAP, JAZZ, CLASSICAL, DANCE, LIVE, USER EQ)
- 3D Sound: You can experience 3D sound effects.
(Off, 3D Expander, Stadium, Concert Hall, Club, Room, Bass Boost, X-live)

• Fade In: You can gradually increase the volume to protect ears.

- You can select [On] or [Off].

• ID3 tag: Displays information of the music file.

- You can select [On] or [Off].
- In case you selects [On], the title and the artist will be displayed.



Setting details

- **Scroll speed:** Sets the speed of the file name and ID3 tag information in the music playing mode.
 - You can select [Off], [X0.5], [X1], [X2], and [X3].
- **Background Setting:** You can select photo file for music background on the photo mode.
 - [Default Image] - Factory default Image will be displayed.
 - [Album Art] - Display Album Art.
 - [User Image] - You can select photo file for music background on the photo mode.
 - First, select the [Photo] in main menu.
 - Select the photo file for music background. (ez button > [Background] > [Music Background])
 - Second, select the [Setup] > [Music] > [Background Setting] > [User image]
- **Reserved recording:** You can reserve the FM radio recording.
 - You can set the frequency for reserved recording.
 - Reserved recording feature is activated only when the player is turned off.
 - You can set only one reserved recording.
 - Recording can be made for maximum 23 hours and 59 minutes.

Record

- **Recording quality:** You can set the quality of the recorded file.
 - You can set [96Kbps], [128Kbps], or [192Kbps].
- **VAD: In case of voice recording, recording will automatically stop upon mute sound and will resume upon reception of the voice signal.**
 - You can select [On] or [Off].

Photo

- **Slide Show:** You can select the slide show.
 - You can select [On] or [Off].
- **Slide interval:** You can select the slide show interval.
 - You can select [2 sec], [3 sec], [4 sec], or [5 sec].

Radio (Optional)

- **Mode:** You can set the reception mode.
 - You can select [Stereo], [Mono] or [Auto].
- **Level:** The lower, the more frequency channels.
 - You can select [High], [Standard], or [Low].
- **Country:** You can set the reception area.
 - You can select [Korea], [Japan] or [Others].



Setting details

Text

- **Text Color:** You can set the character color in the text mode.
 - You can select [White], [Gray], [Yellow], [Blue], or [Pink].
- **Auto Page:** After the certain time passes, the player will automatically open the next page.
 - You can select [Off], [1 sec], [3 sec], [5 sec], or [10 sec].

Battery Save

- **Auto Display off:** If no button is inputted during the given time, the LCD will be automatically turned off.
 - You can select [Always On], [5 sec], [10 sec], [30 sec], or [60 sec].
- **Auto Power off:** If no button is selected in the standby mode for playing, the screen will be automatically turned off.
 - You can select [Off], [30 sec], [1 min], [5 min], or [10 min].

Time

- **Sleep Reservation:** When the defined time passes, the player will be automatically turned off.
 - You can select [Off], [10 min], [30 min], [1 hour], or [2 hours].
 - If you sets the turning-off reservation, the player will automatically store files and turn off at the reserved time.
 - After the player is turned off at the reserved time, the turning-off reservation will be automatically cancelled.
- **Time Setting:** Sets the current time.
 - You can set years between 2001 and 2099.
 - When downloading files in the MTP mode, the time setting of the player will be synchronized with the time setting of the PC.
- **Alarm Setting:** The music playing will automatically resume at the alarm time.
 - You can select [Off], [Once], or [Always].
 - In other modes than the music playing mode, the player will enter into the FM mode when the resume is cancelled.
 - Those models which do not support the radio mode start with the home menu screen when no music file is available.



Setting details

General setting

- **Resume:** This feature remembers the last playing status (for example, the file or playing time) and automatically returns to the last playing status.
 - You can select [On] or [Off].
 - If you turns off the player in Recording/Setup mode not in playing mode (for music, radio (optional), video, photo, and text) and turns it on again, the player will enter into Home menu.
- **Rebuilding:** You can search the downloaded files and update the list.
 - You can select [Yes] or [No].
 - If you selects [Yes], the list will be updated. If you selects [No], the player will return to the general setup screen.
 - As updating the list may take time, check the battery status in advance.
- **Initialize Setting:** You can initialize the setting of the player.
 - You can select [Yes] or [No].
 - If you selects [Yes], the player is automatically turned off after the player is initialized.
 - If you selects [No], the player moves to the previous menu.
- **System Info:** You can check product information.
 - The firmware version, the entire memory space, the used memory, and the remaining memory space are displayed.

- **Language:** You can select the language.
 - Korean, English, Chinese (Traditional), Chinese (Simplified), French, German, Japanese, Portuguese, Russian, Spanish, Italian
- **Format:** You can delete all data in the memory, and initialize the memory.
 - You can select [Yes] or [No].
 - If you selects [Yes], formatting will be made. If you selects [No], the player will return to the general setup screen.
 - Back up the data stored in the player before initializing it.
 - Deleted data cannot be recovered.
- **Brightness:** You can adjust the brightness level from 1 to 4.
 - The default brightness is 3.

USB

- **Mass Storage Class (MSC) mode**
 - The player will function as a general removable storage in this mode.
- **Media Transfer Protocol (MTP) mode**
 - The MTP applies the latest technology of Microsoft to support the multimedia devices. It is recognized as a mobile devices and compatible with Windows Media Player10.



Using the application program

LG Media Center

The LG Media Center program is an integrated data management program developed for users to more conveniently use the MP3 player.

• Features of the LG Media Center

- You can efficiently manage music, video, photo, and text file through the Media Library rule and download them to the MP3 player.

• Contents Service menu

- Music Store: Music purchase, Streaming service
- Media Cast: Music, vide, broadcasting service purchase (Period-based service)
- For more information, see the Help menu of the program or visit www.lge.com.

LG Media Center - Firmware Updating

Connect the player to the PC where the LG Media Center is installed to download a new version of firmware.

- Functions only in the Internet-connected PC.

- 1 Connect one end of the USB cable to the USB port of the PC with the LG Media Center installed and the other to the USB port of the player.
- 2 The LG Media Center will compare the firmware versions of the player and the server. If it detects a new firmware version, it asks you whether to update the version.

3 Click on [OK] button to copy new firmware to the MP3 player.

4 Upon updating, new version firmware will be copied to the MP3 player.

5 To safely remove the device, remove the USB cable.

6 When "Firmware upgrade?" message is displayed, click on ►|| button.

7 The firmware updating progress bar will be displayed. After completion, the power will be automatically turned off.

- Wait till the power is automatically turned off.

8 Turn on the MP3 player, and check the updated version of firmware.

- *** "General setting" on page 52 ***

View the manual

You must install the Adobe Acrobat Reader to read the manual.

Installation of the Adobe Acrobat Reader

Click on "Adobe Acrobat Reader" after inserting the operation program CD into the CD-ROM.

- You can view the owner's manual.



Troubleshooting

Q : The player will not be turned on.

- A : Check whether the battery is remaining.
- A : Connect the AC adapter and charge the battery.

Q : The screen is blur.

- A : Avoid direct sun rays and adjust the brightness.
- A : Check the LCD brightness.

Q : The button does not function.

- A : Check whether the Hold feature is active.

Q : The characters on the display look broken.

- A : Download the font file from the website, and copy it to Config folder.
- A : The Config folder is displayed only in the MSC mode. Change to the MSC mode (In case of the MTP mode, copy the font file to the data folder)

Q : The noise is severe during listening to the radio, and the reception is poor. (Optional)

- A : The earphone functions as an antenna. Be sure to handle carefully.
- A : Slightly change the directions of the player and the earphones.

Q : After the files are downloaded, the play list will not show the newly added files.

- A : Update the list in the Setup menu.
- A : Format the product, and download the file.

Q : After the firmware is updated, the player is not normally functioning.

- A : Reset the product (See page 28)
- A : Back up the data, and format the player.

Q : Sometimes, files are not downloaded.

- A : Check the USB mode of the player (See page 19 - page 23)

Q : Files can not downloaded.

- A : Check the USB mode. Some files can be downloaded depending on the USB mode. All files can be downloaded in the MSC mode.

Q : My PC can not detect an MP3 Player.

- A : Check the USB Mode. In the case of Windows 98 SE/ME, USB Mode should be set to MSC in Setup Menu.
- A : Check if the USB driver on the provided CD is installed.

Q : AVI file will not play.

- A : Only video files transcoded by LG Media Center can be played. Make sure the files to be played are converted by LG Media Center. Refer to the LG Media Center [Help] how to transcode your files.

Q : Characters are not shown properly in text files.

- A : If the text file is encoded in a format that your text file viewer doesn't understand, text data seem to be garbaged or corrupted.
- A : You should convert the text file into Unicode on a PC which supports your language of choice and download it.



Specifications

Type	Item	Specifications
Memory	Capacity	1GB/2GB/4GB
	File system	FAT32
PC	OS for MP3 Player Device	Win98SE/ME/2000/XP
	OS for LG Media Center	Win2000 / XP
	Interface	USB 2.0
General specifications	Dimensions	42 (W) X 70.5 (H) X 12.5 (D)
	Weight	42g (1.48oz) (with battery) / Depends on the product model.
	Operating temperature	0°C + 40°C
Audio	Frequency range	20Hz ~ 20kHz
	Signal-to-noise ratio	85dB
	Channel response	35dB (1kHz)
	Maximum output	18mW+18mW
FM radio (Optional according to model)	Frequency range	87.5~108MHz
	Signal-to-noise ratio	50dB
	Channel response	25dB(1kHz)
	Antenna	Earphones antenna
Playback time	Video	About 8 hours
	Viewing Photos while playing music	About 8 hours
	Audio	About 35 hours (for 128Kbps/44.1KHz EQ normal)
Power supply	AC adapter	DC5V, 1A
	Battery (Built-in)	Lithium Ion DC 3.7V 600 mAh Rechargeable Battery



Specifications

Type	Item	Specifications
Files	Audio	MP3, OGG, WMA, WAV (ADPCM), ASF
	video	LG AVI
	Image viewer	JPG/BMP
	Text viewer	TXT
Display	Display	1.77" (TFT LCD) / 260,000 colors/ 15 frames

Note:

Some parts of the storage space of the MP3 player are usually used for storing the information that is internally treated. Therefore, the storage capacity that can be actually used may be somewhat smaller than specified in the manual. (The size of the storage space for the internally treated information can be changed for product upgrade without any notice to the end users.)

<http://www.lge.com>

Information related to the product is available at this site.

- By updating the firmware, you can improve the performance of the product.



Specifications

Supported file specification

MP3 Decoder

- MP3 decoding support specification including variable bit rate (VBR)

Bitrate	Mpeg1		
	32KHz	44.1KHz	48KHz
32	OK	OK	OK
40	OK	OK	OK
48	OK	OK	OK
56	OK	OK	OK
64	OK	OK	OK
80	OK	OK	OK
96	OK	OK	OK
112	OK	OK	OK
128	OK	OK	OK
144	OK	OK	OK
160	OK	OK	OK
192	OK	OK	OK
224	OK	OK	OK
256	OK	OK	OK
320	OK	OK	OK

MP3 Encoder

- 44.1KHz, (96Kbps, 128Kbps, 192Kbps) Spec

WMA Decoder

- WMA (ASF-audio only) Decode Support

kbps	48	44.1	32	22.05	16	11.025	8
384			O (S)				
320	O (S)	O (S)					
256	O (S)	O (S)					
192	O (S)	O (S)					
160	O (S)	O (S)					
128	O (S)						
96	O (S)						
80	O (S)						
64	O (S)						
48	O (S)	O (S,M)					
40			O (S)				
32	O (M)		O (S)	O (S)			O (M)
22			O (S)				
20			O (M)	O (S,M)	O (S)		
16		O (M)		O (M)	O (S,M)		
12					O (M)		O (S)
10					O (M)	O (M)	
8						O (M)	O (M)
6							O (M)
5							O (M)

- (S): Stereo, (M): Mono

OGG Decoder

- Q(-1) ~ Q(10) Support

ADPCM Decoder

- WAV File Format (MS-ADPCM) Decode

