

User's Guide

L1982U

Make sure to read the **Important Precautions** before using this product.
Keep the User's Guide (CD) in an accessible place for future reference.

See the attached label on the unit and show this information to your dealer
when asking for service.

This unit has been engineered and manufactured to ensure your personal safety, however improper use may result in potential electrical shock or fire hazards. In order to allow the proper operation of all safeguards incorporated in this display, observe the following basic rules for its installation, use, and servicing.

On Safety

Use only the power cord supplied with the unit. In case you use another power cord, make sure that it is certified by the applicable national standards if not being provided by the supplier. If the power cable is faulty in any way, please contact the manufacturer or the nearest authorized repair service provider for a replacement.

The power supply cord is used as the main disconnection device. Ensure that the socket-outlet is easily accessible after installation.

Operate the display only from a power source indicated in the specifications of this manual or listed on the display. If you are not sure what type of power supply you have in your home, consult with your dealer.

Overloaded AC outlets and extension cords are dangerous. So are frayed power cords and broken plugs. They may result in a shock or fire hazard. Call your service technician for replacement.

Do not Open the Display.

- There are no user serviceable components inside.
- There are Dangerous High Voltages inside, even when the power is OFF.
- Contact your dealer if the display is not operating properly.

To Avoid Personal Injury :

- Do not place the display on a sloping shelf unless properly secured.
- Use only a stand recommended by the manufacturer.
- Do not drop an object on or apply impact to the product. Do not throw any toys or objects on the product screen.
It can cause injury to human, problem to product and damage the display.

To Prevent Fire or Hazards:

- Always turn the display OFF if you leave the room for more than a short period of time. Never leave the display ON when leaving the house.
- Keep children from dropping or pushing objects into the display's cabinet openings. Some internal parts carry hazardous voltages.
- Do not add accessories that have not been designed for this display.
- When the display is to be left unattended for an extended period of time, unplug it from the wall outlet.
- In the presence of thunder and lightning, never touch the power cord and signal cable because it can be very dangerous. It can cause electric shock.

On Installation

Do not allow anything to rest upon or roll over the power cord, and do not place the display where the power cord is subject to damage.

Do not use this display near water such as near a bathtub, washbowl, kitchen sink, laundry tub, in a wet basement, or near a swimming pool.

Displays are provided with ventilation openings in the cabinet to allow the release of heat generated during operation. If these openings are blocked, built-up heat can cause failures which may result in a fire hazard. Therefore, NEVER:

- Block the bottom ventilation slots by placing the display on a bed, sofa, rug, etc.
- Place the display in a built-in enclosure unless proper ventilation is provided.
- Cover the openings with cloth or other material.
- Place the display near or over a radiator or heat source.
- Main power breaker is the power cord and this breaking device must be located at a location where it is easy to operate.

Do not rub or strike the Active Matrix LCD with anything hard as this may scratch, mar, or damage the Active Matrix LCD permanently.

Do not press the LCD screen with your finger for a long time as this may cause some afterimages.

Some dot defects may appear as Red, Green or Blue spots on the screen. However, this will have no impact or effect on the display performance.

If possible, use the recommended resolution to obtain the best image quality for your LCD display. If used under any mode except the recommended resolution, some scaled or processed images may appear on the screen. However, this is characteristic of the fixed-resolution LCD panel.

On Cleaning

- Unplug the display before cleaning the face of the display screen.
- Use a slightly damp (not wet) cloth. Do not use an aerosol directly on the display screen because over-spraying may cause electrical shock.

On Repacking

- Do not throw away the carton and packing materials. They make an ideal container in which to transport the unit. When shipping the unit to another location, repack it in its original material.

On Disposal

- The fluorescent lamp used in this product contains a small amount of mercury.
- Do not dispose of this product with general household waste.
Disposal of this product must be carried out in accordance to the regulations of your local authority.

Unfolding the stand base



Do not hold the stand base as shown in this picture.

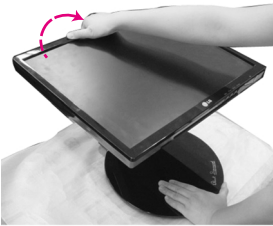
1. Put your monitor on a table.



2. Hold the monitor as shown, and then lift it up slightly.



3. Hold the head part of the monitor and pull it toward you.



4. Place the monitor upright and adjust the stand base to the desired angle. Adjust the stand base's angle by holding the edges of the monitor gently with both hands.

The Head part



This illustration depicts the typical connection procedure. Your monitor may differ from the one displayed in the pictures above.



Do not touch or apply force to the monitor's screen while expanding or folding the stand base.

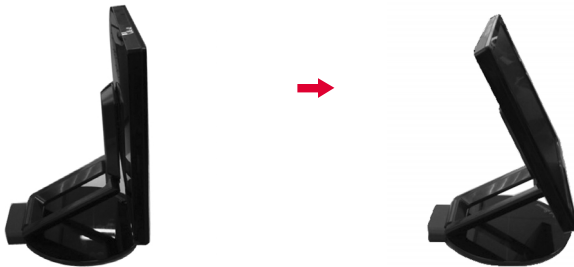
Folding the stand base

1. Face the front of the monitor display. Then gently push the monitor backwards, following the sequence shown in the picture below.



Tilt range

1. Make sure that the angle of the panel is set for your comfort.

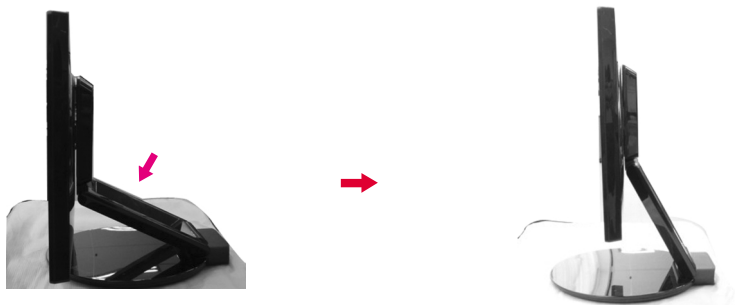
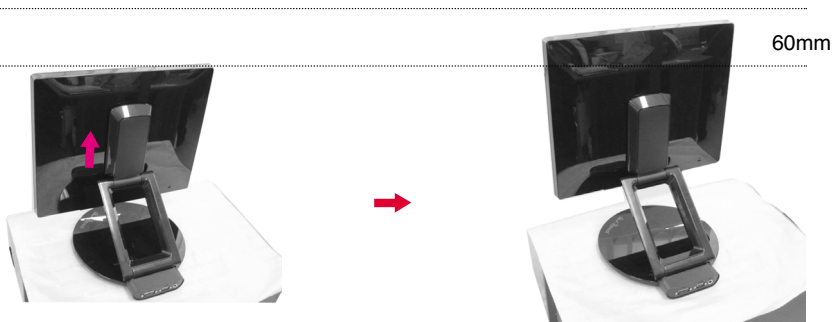


NOTE

- When the panel is tilted at more than 30°, you cannot adjust the height of the monitor.

To adjust the height,

- **Height Range** : maximum 2.36 inches (60 mm)

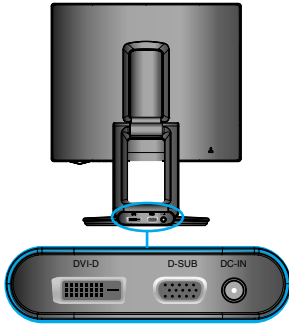


NOTE

- When the monitor is at maximum height, it may slide down slightly due to the elasticity of the spring.

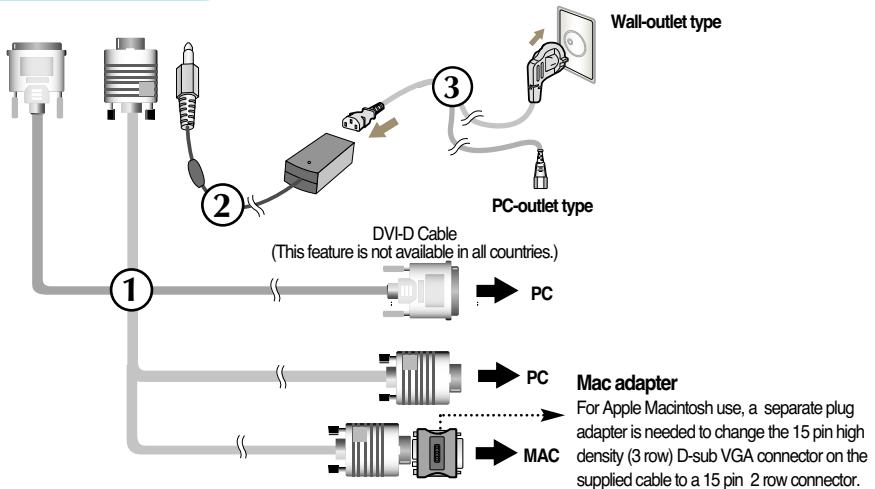
Connecting with the PC


1. Before setting up the monitor, ensure that the power to the monitor, the computer system, and other attached devices is turned off.
2. Connect the signal cable ①. After it is attached, tighten the thumbscrews to secure the connection.
3. Connect the power cable ③ to the AC-DC adapter (AC-DC power supply) ②, and then plug the cable into the outlet.



NOTE

- This is a simplified representation of the rear view.
- This rear view represents a general model; your display may differ from the view as shown.



4. Press the button  on the front switch panel to turn the power on. When the power is turned on, the 'Self Image Setting Function' will launch automatically. (Only Analog Mode)

PROCESSING SELF
IMAGE SETTING

NOTE

'Self Image Setting Function'? This function provides the user with optimal display settings. When the user connects the monitor for the first time, this function automatically adjusts the display to optimal settings for individual input signals.

'AUTO/SET' Function? When you encounter problems such as blurry screen, blurred letters, screen flicker or tilted screen while using the device or after changing screen resolution, press the AUTO/SET function button to improve resolution.

Using the Auto Pivot and Auto Mirror functions

This model supports Auto Pivot (automatic rotation) and Auto Mirror (automatic up/down reverse) functions.

To use these functions, first install the provided Forte Manager software, and then set to Automatic. (Manual is the default setting when you initially purchase the product.)

- Refer to the installation guide, which is included on the CD for more details on the installation

-To set to Automatic, select Forte Manager -> Option -> Pivot -> Enable Auto Pivot.

Notice

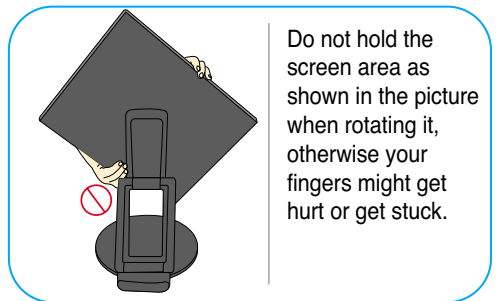
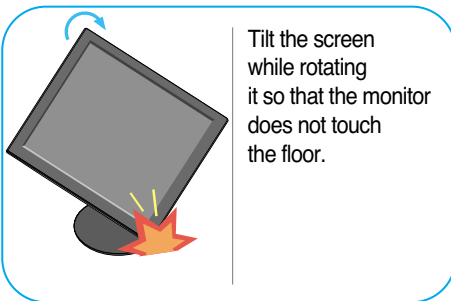
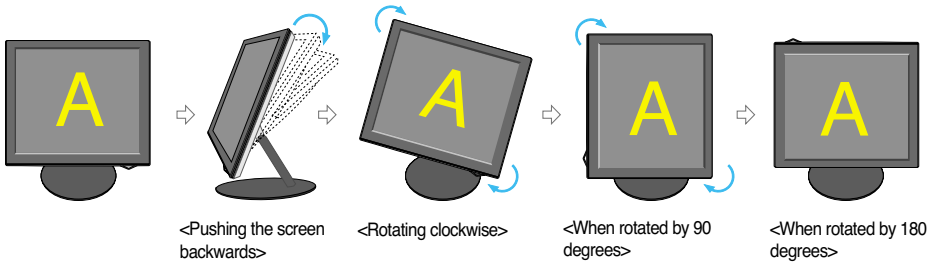
- The Forte Manager software requires Microsoft Explorer 6.0 or later.
- When the Auto Mirror function is engaged, the direction of the OSD (On Screen Display) menu will not change if it is rotated by 180°. (See the figure below)
- The response time (speed) for the Auto Pivot and Auto Mirror functions may vary depending on the video card and the PC's performance, None of these functions is supported in DOS mode.
- Update the video card driver on your PC to the latest version when the Forte Manager does not work properly or is out of order.

Auto Pivot

- Screen rotation : You can rotate the monitor clockwise by 180 degrees.

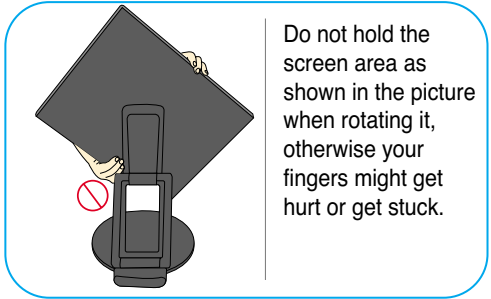
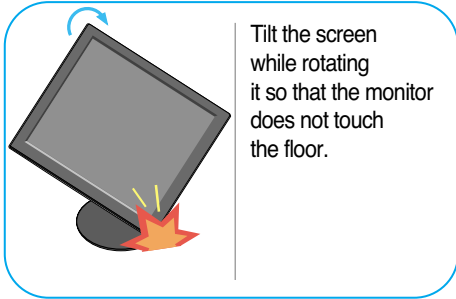
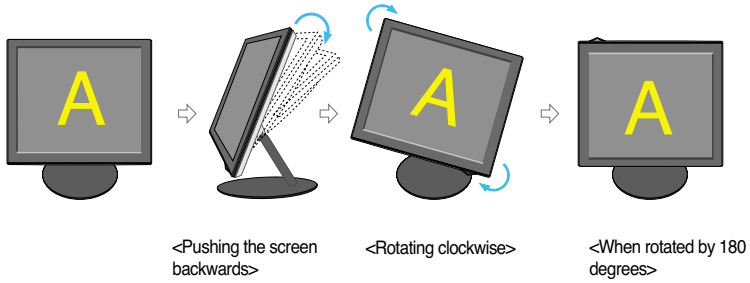
※ Caution : Do not touch the screen while you rotate the panel.

⇨ This rear view represents a typical model. Your display model may differ from the illustration below.



⇨ Refer to the next page for Auto Mirror function.

Using the Auto Pivot and Auto Mirror functions

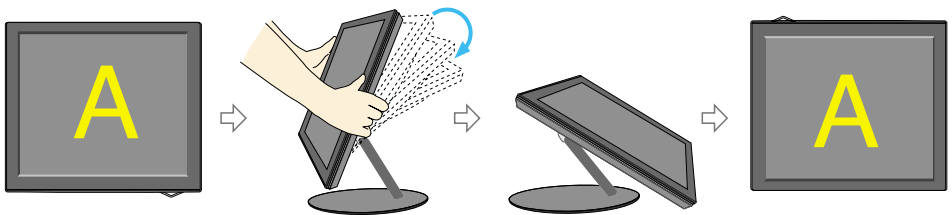


Auto Mirror

- **Screen switch** : The monitor screen is automatically reversed when you switch it forward/backward as shown in the figure.

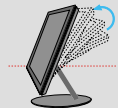
* **Caution** : Do not touch the screen while you rotate the panel.

⇨ This rear view represents a typical model. Your display model may differ from the illustration below.

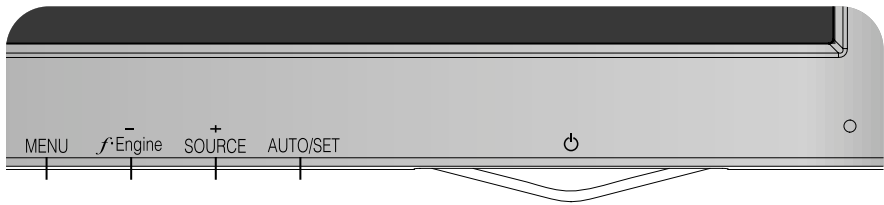


Tip

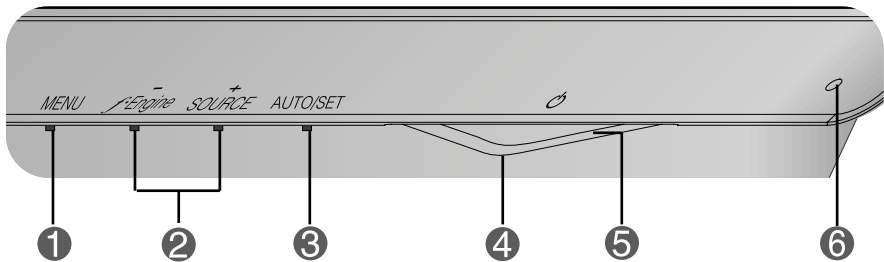
- If you activate the Auto Pivot or the Auto Mirror function while the screen is almost level, the screen may not work properly. In this case, set the screen upright and adjust it to the proper angle.
- It is recommended that in order to maintain an ergonomic and comfortable viewing position, the forward tilt angle of the monitor should not exceed 5 degrees.

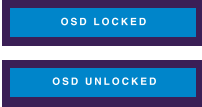
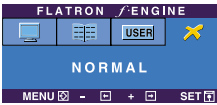


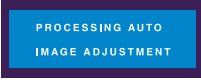
Front Panel Controls



Bottom



Control	Function
<p>1 MENU Button</p> 	<p>Use this button to enter or exit from the On Screen Display.</p> <p>OSD LOCKED/UNLOCKED</p> <p>This function allows you to lock the current control settings, so that these settings are not inadvertently changed. To lock the OSD settings, press and hold the MENU button for several seconds. The message "OSD LOCKED" appears.</p> <p>You can unlock the OSD settings at any time by pushing the MENU button for several seconds. The message "OSD UNLOCKED" appears.</p>
<p>2 - + Buttons</p> <p>- Button (f-Engine)</p> 	<p>Use these buttons to select or adjust functions in the On Screen Display.</p> <p>For more information, refer to page A16.</p>
<p>+ Button (SOURCE Hot key)</p>	<p>Use this button to make either D-Sub or DVI connector active. This feature is used when two computers are connected to the display. The default setting is D-Sub.</p>

Control	Function
<p>3 AUTO/SET Button</p> 	<p>Use this button to selection an icon in the On Screen Display.</p> <hr/> <p>AUTO IMAGE ADJUSTMENT When adjusting your display settings, always press the AUTO/SET button prior to entering the On Screen Display(OSD). This will automatically adjust your display image to the ideal settings for the current screen resolution size (display mode). The best display mode is 19 inch monitor : 1280 x 1024</p>
<p>4 Power Button</p>	<p>Use this button to turn the display on or off.</p>
<p>5 Power Indicator</p>	<p>This Indicator lights up as blue when the display is operating normally(On Mode). If the display is in Sleep Mode (Energy Saving), this indicator color will changes to amber.</p>
<p>6 AUTO BRIGHT Sensor</p>	<p>You can make the screen brighter or darker by covering the AUTO BRIGHT Sensor. To use the AUTO BRIGHT function, go to OSD menu in Setup menu and turn on AUTO BRIGHT. Default setting is OFF.</p>

Screen Adjustment

Making adjustments to the display's image size, position and operating parameters is quick and easy with the On Screen Display Control system(OSD). A short example is given below to familiarize you with the use of the controls. The following section is an outline of the available adjustments and selections you can make by using the OSD.

NOTE

- Allow the display to stabilize for at least 30 minutes before making any image adjustments.

To make adjustments in the On Screen Display, follow these steps:

MENU → - + → AUTO/SET → - + → MENU

- 1** Press the MENU button, then the main menu of the OSD appears.
- 2** To select each item in the OSD menu, use the - or + button. When the icon you want is highlighted, press the AUTO/SET Button.
- 3** Use the - / + buttons to adjust the image to the desired level. Use the AUTO/SET button to select other sub-menu items.
- 4** Press the MENU button once to return to the main menu to select another function. Press the MENU button twice to exit from the OSD.

On Screen Display (OSD) Selection and Adjustment

The following table indicates all the On Screen Display control, adjustment, and setting menus.

Main menu	Sub-menu		A	D	Reference	
PICTURE	BRIGHTNESS		●	●	To adjust the brightness, contrast and gamma of the screen	
	CONTRAST		●	●		
	GAMMA		●	●		
COLOR	PRESET	sRGB	●	●	To customize the color of the screen	
		6500K	●	●		
		9300K	●	●		
	RED		●	●		
	GREEN		●	●		
	BLUE		●	●		
POSITION	HORIZONTAL		●		To adjust the position of the screen	
	VERTICAL		●			
TRACKING	CLOCK		●		To improve the clarity and stability, sharpness of the screen	
	PHASE		●			
	SHARPNESS		●	●		
SETUP	LANGUAGE		●	●	To customize the screen status for a user's operating environment	
	WHITE BALANCE		●			
	AUTO BRIGHT		●	●		
	FACTORY RESET		●	●		
	POWER INDICATOR		●	●		
	OSD	HORIZONTAL		●		●
		VERTICAL		●		●
FLATRON F-ENGINE	MOVIE / TEXT		●	●	To select or customize desired image settings	
	USER		●	●		
	NORMAL		●	●		
● : Adjustable A : Analog Input D : Digital Input						

NOTE

- The order of icons may differ depending on the model (A12~A16).

On Screen Display (OSD) Selection and Adjustment

Earlier you were introduced to the procedure for selecting and adjusting an item using the OSD system. Listed below are the icons, icon names, and icon descriptions of every items that displays on the Menu.

Press the MENU Button, then the main menu of the OSD appears.


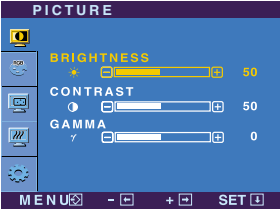



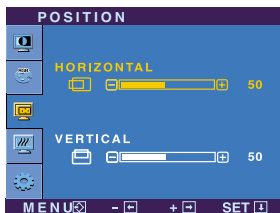
The screenshot shows the OSD menu with the following elements:

- Menu Name:** PICTURE
- Icons:** A vertical list of icons on the left side, including a monitor, RGB, a monitor with a plus sign, a monitor with a minus sign, and a gear.
- Sub-menus:** BRIGHTNESS (value 50), CONTRAST (value 50), and GAMMA (value 0). Each sub-menu has a sun icon, a minus sign, a progress bar, and a plus sign.
- Button Tip:** A legend at the bottom left explaining the controls: MENU (monitor icon with arrows) for Exit, - + for Adjust (Decrease/Increase), SET (monitor icon with arrow) for Enter, and a down arrow for Select another sub-menu.


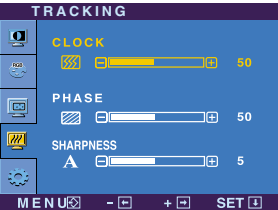
NOTE


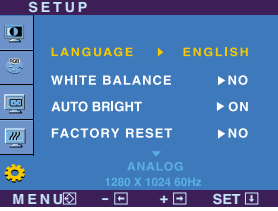
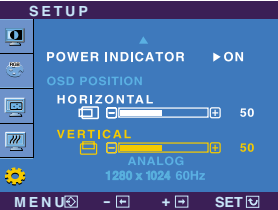
- The On Screen Display (OSD) menu languages displayed on the monitor may differ from the manual.

On Screen Display (OSD) Selection and Adjustment

Main menu	Sub menu	Description
	PICTURE	
	BRIGHTNESS	To adjust the brightness of the screen.
	CONTRAST	To adjust the contrast of the screen.
	GAMMA	Set your own gamma value. : -50/0/50 on the monitor, high gamma values display whitish images and low gamma values display high contrast images.
<ul style="list-style-type: none">■ MENU : Exit■ - : Decrease■ + : Increase■ SET : Select another sub-menu		
	COLOR	
	PRESET	<ul style="list-style-type: none">• sRGB: Set the screen color to fit the SRGB standard color specification.• 6500K: Slightly reddish white.• 9300K: Slightly bluish white.
	RED	Set your own red color levels.
	GREEN	Set your own green color levels.
	BLUE	Set your own blue color levels.
<ul style="list-style-type: none">■ MENU : Exit■ - : Decrease■ + : Increase■ SET : Select another sub-menu		
	POSITION	
	HORIZONTAL	To move image left and right.
	VERTICAL	To move image up and down.
<ul style="list-style-type: none">■ MENU : Exit■ - : Decrease■ + : Increase■ SET : Select another sub-menu		


On Screen Display (OSD) Selection and Adjustment

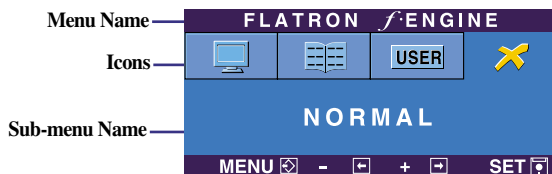
Main menu	Sub menu	Description
 <p>TRACKING</p>  <ul style="list-style-type: none"> ■ MENU : Exit ■ - : Decrease ■ + : Increase ■ SET : Select another sub-menu 	<p>CLOCK</p> <p>PHASE</p> <p>SHARPNESS</p>	<p>CLOCK To minimize any vertical bars or stripes visible on the screen background. This also allows you horizontal screen size.</p> <p>PHASE To adjust the focus of the display. This item allows you to remove any horizontal noise and clear or sharpen the image of characters.</p> <p>SHARPNESS To adjust the clarity of the screen.</p>

 <p>SETUP</p>   <ul style="list-style-type: none"> ■ MENU : Exit ■ - : Adjust ■ + : Adjust ■ SET : Select another sub-menu 	<p>LANGUAGE</p> <p>WHITE BALANCE</p> <p>AUTO BRIGHT</p> <p>FACTORY RESET</p> <p>POWER INDICATOR</p> <p>OSD POSITION</p>	<p>LANGUAGE To choose the language in which the control names are displayed.</p> <p>WHITE BALANCE If the output of the video card differs from the required specifications, the color level may deteriorate due to video signal distortion. Using this function, the signal level is adjusted to fit into the standard output level of the video card, which provides the display of the optimal image. Activate this function when the black and white colors are displayed on the screen.</p> <p>AUTO BRIGHT This function enables you to turn the AUTO BRIGHT ON/OFF. When you set AUTO BRIGHT to ON, the monitor's brightness is changed automatically, based on the strength of the surrounding light.</p> <p>FACTORY RESET Restore all factory default settings except for "LANGUAGE." Press the + button to reset immediately.</p> <p>POWER INDICATOR Use this function to set the power indicator on the front side of the monitor to ON or OFF. If you set OFF, it will go off. If you set ON at any time, the power indicator will automatically be turned on.</p> <p>OSD POSITION To adjust position of the OSD window on the screen.</p>
---	---	--

If this does not improve the screen image, restore the factory default settings.
If necessary, perform the white balance function again. This function will be enabled only when the input signal is analog.

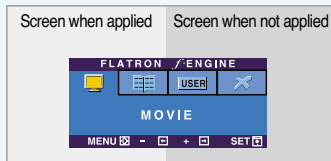
On Screen Display (OSD) Selection and Adjustment

- The OSD screen will appear when you press the  Engine (-) button on the right side of the monitor.

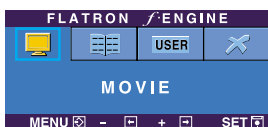


FLATRON F-ENGINE

When you execute F-ENGINE, two tone will appear on the screen as shown in the picture. The applied screen will appear on the left side, whereas the non-applied screen will appear on the right side. Press the SET button to use the adjusted screen.



Main menu	Sub menu	Description
-----------	----------	-------------

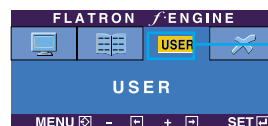


MOVIE TEXT

This feature lets you easily select the best image setting, which is optimized to the environment (ambient illumination, image types, etc.).

MOVIE: For animation images in videos or movies.

TEXT: For text images (Word processing, etc.)

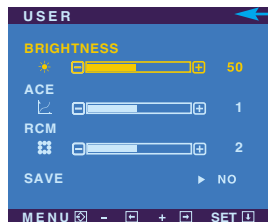


USER

User

You can manually adjust the brightness, ACE or RCM. You can save or restore the adjusted value even when in a different environment.

To adjust the USER sub-menu function, Press the SET Button



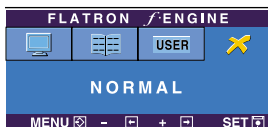
...  (Brightness): Adjusts screen brightness.

...**ACE** (Adaptive Clarity Enhancer): Selects the clarity mode.

...**RCM** (Real Color Management): Selects the color mode.

-  0 Not applied
-  1 Green enhanced
-  2 Flesh tone
-  3 Color Enhanced

Select the **SAVE** sub-menu using the **SET** button and save the **YES** value using the **buttons**.



NORMAL This is under normal operating conditions.

Check the following before calling for service.

No image appears	
<ul style="list-style-type: none">● Is the power cord of the display connected?	<ul style="list-style-type: none">• Check and see if the power cord is connected properly to the power outlet.
<ul style="list-style-type: none">● Is the power on and the power indicator blue or green?	<ul style="list-style-type: none">• Adjust the brightness and the contrast.
<ul style="list-style-type: none">● Is the power indicator amber?	<ul style="list-style-type: none">• If the display is in power saving mode, move the mouse or press any key on the keyboard to activate the screen.• Turn on the PC.
<ul style="list-style-type: none">● Do you see an "OUT OF RANGE" message on the screen?	<ul style="list-style-type: none">• This message appear when the signal from the PC (video card) is out of the diplay's horizontal or vertical frequency range. See the 'Specifications' section of this manual and configure the display again.
<ul style="list-style-type: none">● Do you see a "CHECK SIGNAL CABLE" message on the screen?	<ul style="list-style-type: none">• This message appears when the signal cable between your PC and the display is not connected. Check the signal cable and try again.

Do you see an "OSD LOCKED" message on the screen?	
<ul style="list-style-type: none">● Do you see "OSD LOCKED" when you push MENU button?	<ul style="list-style-type: none">• You can secure the current control settings, so that they cannot be inadvertently changed. You can unlock the OSD controls at any time by pushing the MENU button for several seconds: the message "OSD UNLOCKED" will appear.

Display image is incorrect

- | | |
|---|---|
| <ul style="list-style-type: none">● Display Position is incorrect. | <ul style="list-style-type: none">• Press the AUTO/SET button to automatically adjust the display image to the ideal setting. If the results are unsatisfactory, adjust the image position using the H position and V position icon on the On Screen Display.• Check Control Panel --> Display --> Settings and see if the frequency or the resolution were changed. If yes, readjust the video card to the recommended resolution. |
| <ul style="list-style-type: none">● On the screen background, vertical bars or stripes are visible. | <ul style="list-style-type: none">• Press the AUTO/SET button to automatically adjust your display image to the ideal setting. If the results are unsatisfactory, decrease the vertical bars or stripes using the CLOCK icon on the On Screen Display. |
| <ul style="list-style-type: none">● Any horizontal noise appearing in any image or characters are not clearly portrayed. | <ul style="list-style-type: none">• Press the AUTO/SET button to automatically adjust your display image to the ideal setting. If the results are unsatisfactory, decrease the horizontal bars using the PHASE icon on the On Screen Display.• Check Control Panel --> Display --> Settings and adjust the display to the recommended resolution or adjust the display image to the ideal setting. Set the color setting to higher than 24 bits (true color). |
| <ul style="list-style-type: none">● The screen color is mono or abnormal. | <ul style="list-style-type: none">• Check if the signal cable is properly connected and use a screwdriver to fasten it necessary.• Make sure the video card is properly inserted in its slot.• Set the color setting to higher than 24 bits (true color) on the Control Panel - Settings. |
| <ul style="list-style-type: none">● The screen blinks. | <ul style="list-style-type: none">• Check if the screen is set to interlace mode and if yes, change it to the recommended resolution. |

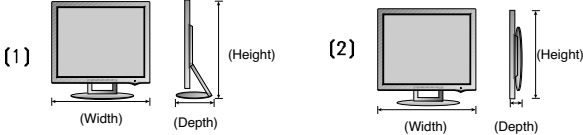
Have you installed the display driver?

● **Have you installed the display driver?**

• Be sure to install the display driver from the display driver CD (or diskette) that comes with your Monitor. Or, you can also download the driver from our web site: <http://www.lge.com>.

● **Do you see an "Unrecognized monitor, Plug&Play (VESA DDC) monitor found" message?**

• Make sure to check if the video card supports the Plug&Play function.

Display	19 inches (48.19 cm) Flat Panel Active matrix-TFT LCD Anti-Glare coating 19 inches viewable 0.294 mm pixel pitch	
Sync Input	Horizontal Freq.	Analog : 30 - 83 kHz (Automatic) Digital : 30 - 71 kHz (Automatic)
	Vertical Freq.	56 - 75 Hz (Automatic)
	Input Form	Separate TTL, Positive/Negative SOG (Sync On Green), Digital(HDCP)
Video Input	Signal Input	15 pin D-Sub Connector DVI - D connector (Digital)
	Input Form	RGB Analog (0.7 Vp-p/ 75 ohm), Digital
Resolution	Max	Analog : VESA 1280 x 1024 @75 Hz Digital : VESA 1280 x 1024 @60 Hz
	Recommend	VESA 1280 x 1024 @60 Hz
Plug&Play	DDC 2B	
Power Consumption	On Mode	: 35 W(Typ.)
	Sleep Mode	: 1 W(Typ.)
	Off Mode	≤ 1 W
Dimensions & Weight	 <p>Width x Height x Depth</p> <p>[1] 40.94 cm(16.12 inches) x 52.82 cm(20.79 inches) x 30.32 cm(11.93 inches) [2] 40.94 cm(16.12 inches) x 34.20 cm(13.46 inches) x 8.0 cm(3.15 inches)</p> <p>Net 6.7 kg (14.77 lbs)</p>	
Tilt/Height Range	Tilt range	0°~153°
	Height range	60 mm / 2.36 inches
	Rotate	180°clockwise
Power Input	12V ≍ 3.0A	
AC-DC Adapter	DVE, DSA-0421S-12 1 42 or Lien Chang, LCAP07F	
Environmental Conditions	Operating Conditions	
	Temperature	10°C to 35 °C
	Humidity	10 % to 80 % non-Condensing
	Storage Conditions	
	Temperature	-20°C to 60 °C
	Humidity	5 % to 90 % non-Condensing

Specifications

Stand Base	Attached (O), Detached ()
Power cord	Wall-outlet type or PC-outlet type

NOTE

- Information in this document is subject to change without notice.

Preset Modes (Resolution)

Display Modes (Resolution)			Horizontal Freq. (kHz)	Vertical Freq. (Hz)
1	VGA	640 x 350	31.469	70
2	VGA	720 x 400	31.468	70
3	VGA	640 x 480	31.469	60
4	VESA	640 x 480	37.500	75
5	VESA	800 x 600	37.879	60
6	VESA	800 x 600	46.875	75
7	MAC	832 x 624	49.725	75
8	VESA	1024 x 768	48.363	60
9	VESA	1024 x 768	60.023	75
10	MAC	1152 x 870	68.681	75
11	VESA	1152 x 900	61.805	65
*12	VESA	1280 x 1024	63.981	60
**13	VESA	1280 x 1024	79.976	75

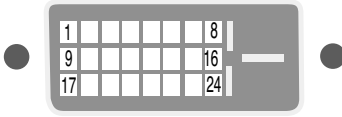
* Recommend Mode

** Only Analog Mode

Indicator

MODE	LED Color
On Mode	blue
Sleep Mode	amber
Off Mode	Off

Signal Connector Pin Assignment



■ DVI-D Connector

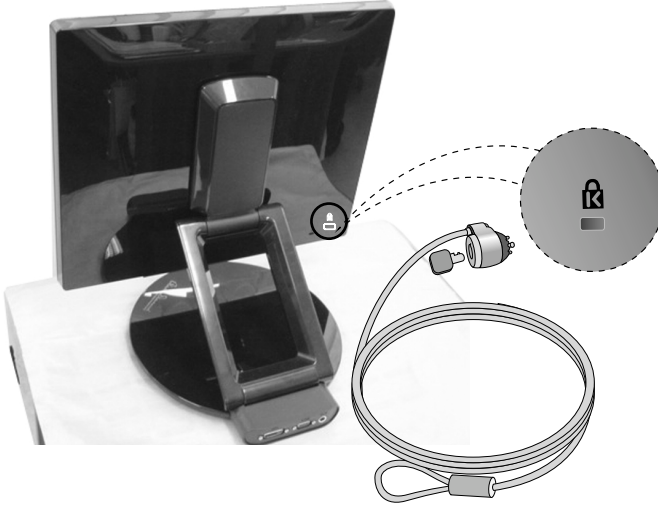
Pin	Signal(DVI-D)
1	T. M. D. S. Data2-
2	T. M. D. S. Data2+
3	T. M. D. S. Data2/4 Shield
4	T. M. D. S. Data4-
5	T. M. D. S. Data4+
6	DDC Clock
7	DDC Data
8	Analog Vertical Sync.
9	T. M. D. S. Data1-
10	T. M. D. S. Data1+
11	T. M. D. S. Data1/3 Shield
12	T. M. D. S. Data3-
13	T. M. D. S. Data3+
14	+5V Power
15	Ground (return for +5V, H. Sync. and V. Sync.)

Pin	Signal(DVI-D)
16	Hot Plug Detect
17	T. M. D. S. Data0-
18	T. M. D. S. Data0+
19	T. M. D. S. Data0/5 Shield
20	T. M. D. S. Data5-
21	T. M. D. S. Data5+
22	T. M. D. S. Clock Shield
23	T. M. D. S. Clock+
24	T. M. D. S. Clock-

T. M. D. S. (Transition Minimized Differential Signaling)

Kensington Security Slot

Connected to a locking cable that can be purchased separately at most computer stores.



Digitally yours ■■■■.....

