



## **Touch Me**

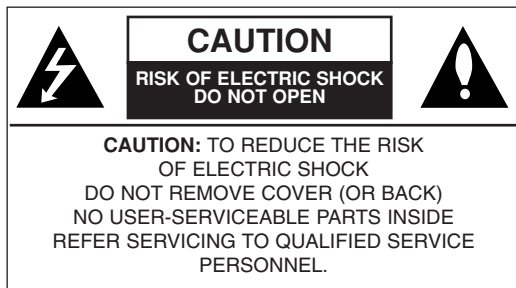
**OWNER'S MANUAL**

**MODEL: FM37**

**Please read this manual carefully before operating your set.  
Retain it for future reference.**

**Designs and specifications are subject to change without notice for improvement.**





### Warning

- To reduce the risk of fire or electric shock, do not expose this appliance to rain or moisture.

### Caution

- The appliance is not intended for use by young children or infirm persons without supervision.
- Young Children should be supervised to ensure that they do not play appliance.
- Use of controls or adjustments or performance of procedures other than those specified herein may result in hazardous radiation exposure.



### Disposal of your old appliance

1. When this crossed-out wheeled bin symbol is attached to a product it means the product is covered by the European Directive 2002/96/EC.
2. All electrical and electronic products should be disposed of separately from the municipal waste stream via designated collection facilities appointed by the government or the local authorities.
3. The correct disposal of your old appliance will help prevent potential negative consequences for the environment and human health.
4. For more detailed information about disposal of your old appliance, please contact your city office, waste disposal service or the shop where you purchased the product.



The working life of this product is 7 years since the date of purchase.



This product is manufactured to in compliance with the radio interference requirements of EEC DIRECTIVE 89/336/EEC, 93/68/EEC and 73/23/EEC.

## REGULATORY INFORMATION

### FCC Part 15

This product has been tested and found to comply with the limits for a Class B digital device, pursuant to Part 15 of the FCC Rules. These limits are designed to provide reasonable protection against harmful interference when the product is operated in a residential installation. This product generates, uses and can radiate radio frequency energy and, if not installed and used in accordance with the instruction manual, may cause harmful interference to radio communications.

However, there is no guarantee that interference will not occur in a particular installation. If this product does cause harmful interference to radio or television reception, which can be determined by turning the product off and on, you are encouraged to try to correct the interference by one or more of the following measures:

- Reorient or relocate the receiving antenna.
- Increase the separation between the product and receiver.
- Connect the product into an outlet on a circuit different from that to which the receiver is connected.
- Consult the dealer or an experienced radio/TV technician for help.

### Industry Canada requirement

- This Class B digital apparatus complies with Canadian ICES-003.
- Cet appareil numérique de la classe B est conforme qa la norme à NMB-003 du Canada.

### Warning

- The lithium battery contains lithium and can explode if it is not properly handled or disposed of.
- Replace only with a battery of the type recommended by LG.
- Caution: Danger of explosion if battery is incorrectly replaced. Replace only with the same or equivalent type recommended by LG. Dispose of used batteries according to the manufacturer's instructions.

## FCC WARNING

This equipment may generate or use radio frequency energy. Changes or modifications to this equipment may cause harmful interference unless the modifications are expressly approved in the instruction manual.

You could lose the authority to operate this equipment if an unauthorized change or modification is made.

- Changes or modifications not expressly approved by the party responsible for compliance could void the user's authority to operate the equipment.
- MP3 player is for use only with UL listed personal computers that have installation instructions detailing user installation of card cage accessory.



**FOR HOME OR OFFICE USE**

## CAUTION

PLEASE READ AND OBSERVE ALL WARNINGS AND INSTRUCTIONS IN THIS OWNER MANUAL AND THOSE MARKED ON THE UNIT. RETAIN THIS BOOKLET FOR FUTURE REFERENCE.

This set has been designed and manufactured to assure personal safety. Improper use can result in electric shock or fire hazard. The safeguards incorporated in this unit will protect you if you observe the following procedures for installation, use, and servicing. This unit does not contain any parts that can be repaired by the user.

**DO NOT REMOVE THE CABINET COVER, OR YOU MAY BE EXPOSED TO DANGEROUS VOLTAGE. REFER SERVICING TO QUALIFIED SERVICE PERSONNEL ONLY.**

1. Read these instructions.
  - All these safety and operating instructions should be read before the product is operated.
2. Keep these instructions.
  - The safety, operating and use instructions should be retained for future reference.
3. Heed all warnings.
  - All warnings on the product and in the operating instructions should be adhered to.
4. Follow all instructions.
  - All operating and use instructions should be followed.
5. Do not use this apparatus near water.
  - For example:near a bath tub, wash bowl, kitchen sink, laundry tub, in a wet basement; or near a swimming pool; and like.
6. Clean only with dry cloth.
  - Unplug this product from the wall outlet before cleaning.
  - Do not use liquid cleaners.
7. Do not block any ventilation openings. Install in accordance with the manufacturers instructions.
  - Slots and openings in the cabinet are provided for ventilation and to ensure reliable operation of the product and to protect it from over- heating.
  - The openings should never be blocked by placing the product on a bed, sofa, rug or other similar surface.

This product should not be placed in a built-in installation such as a bookcase or rack unless proper ventilation is provided or the manufacturer instructions have been adhered to.

  - Important Safety Instructions
8. Do not install near any heat sources such as radiators, heat registers, stoves, or other apparatus (including amplifiers) that produce heat.

9. Do not defeat the safety purpose of the polarized or grounding-type plug. A polarized plug has two blades with one wider than the other. A grounding type plug has two blades and a third grounding prong. The wide blade or the third prong are provided for your safety.
  - If the provided plug does not fit into your outlet, consult an electrician for replacement of the obsolete outlet.
10. Protect the power cord from being walked on or pinched particularly at plugs, convenience receptacles, and the point where they exit from the product.
11. Only use attachments/accessories specified by the manufacturer.
12. Use only with the cart, stand, tripod, bracket, or table specified by the manufacturer, or sold with apparatus.
  - When a cart is used, use caution when moving the cart/apparatus combination to avoid injury from tip over.



13. Unplug this apparatus during lightning storms or when unused for long periods of time.
14. Refer all servicing to qualified service personnel. Servicing is required when the apparatus has been damaged in any way, such as power- supply cord or plug is damaged, liquid has been spilled or objects have fallen into the apparatus, the apparatus has been exposed to rain or moisture, does not operate normally, or has been dropped.

## Portable Data Storage

Easy storage and transfer of any file type.

## USB 1.1 and 2.0

You can download files at a fast speed.  
(USB 2.0 high speed)

## FM Reception (Option by models)

With auto frequency selection feature, you can conveniently listen to FM radio broadcasting.

## LG 3D Sound

3D sound effects, low tones, and low frequency sound provide greater sound quality.

## Text Viewer

Convenient display of text files (.txt) for reading on the go.

## Photo Viewer

Store and display photos on the vivid display for entertaining slide shows.

## 2.4" Color TFT LCD

Photos and video are reproduced in vivid detail on the highly portable 260,000 color TFT LCD.

## Touch screen

You can use the menus and functions of MP3 player by touching the LCD.

## File Format Flexibility

- Music: MP3, OGG, WMA, WAV (ADPCM), ASF
- Video: LG AVI/ LG WMV (MP3 player can only play the video files downloaded via LG Media Center.)
- Photo: JPG
- Text: TXT

## Media Device(MTP) Mode / Removable Disk(MSC) Mode

### What is the Media Device(MTP) mode?

The MTP stands for the Media Transfer Protocol. It applies the latest technology defined by Microsoft to support multimedia devices.

- Windows XP / SP1 or higher OS, and Windows Media Player 10.
- To use the MSC mode, select the MSC mode in the PC Connection Setting menu.
- If the Windows OS does not support the MTP, the player will function in the MSC mode although the player is set in the MTP mode (Select the MSC mode for the USB in the setup menu for Windows 98 SE/ ME).

### What is the Removable Disk(MSC) mode?

The MSC stands for the Mass Storage Class. The device in MSC mode functions like a portable memory.



# Table of Contents

## Before operation

|   |   |
|---|---|
| Safety tips .....                       | 7 |
| General information of MP3 player ..... | 8 |
| Name of each component .....            | 9 |

## Installation

|                               |       |
|-------------------------------|-------|
| Installing software .....     | 10-13 |
| Connecting to the PC .....    | 14-16 |
| Converting video file .....   | 17    |
| Firmware upgrade .....        | 18    |
| Charging the MP3 player ..... | 19    |

## Operation

|  |       |
|--|-------|
| Basic operation .....                              | 20    |
| Playing screen of each mode .....                  | 21-23 |
| Initial setting of Home Menu .....                 | 24    |
| Playing music .....                                | 25-29 |
| Playing movie .....                                | 30-33 |
| Viewing photo .....                                | 34-36 |
| Listening to the FM radio (Option by models) ..... | 37-40 |
| Viewing text .....                                 | 41-43 |
| Checking up all files/ Playing a game .....        | 44    |
| Setup menu .....                                   | 45-47 |
| Recording .....                                    | 47    |

## Reference

|                       |       |
|-----------------------|-------|
| Troubleshooting ..... | 48    |
| Specifications .....  | 49-50 |

# Safety tips

Please follow the safety instructions closely to reduce the risk of accidents or damage to equipment.

Safety instructions are divided into Warning and Attention:

Keep this manual in an easily accessible place.



## Warning

Not following the instruction may result in death or serious injury.



## Warnings



Keep this product away from heat.



Note that MP3 player may malfunction in an electrostatic environment.



Use the AC adapter shipped with the product for the safety purposes.



Don't listen to music for a long time. It may damage your hearing.



Disconnect the AC adapter and the cable in case of a lightning or thunder. Otherwise, an electric shock or fire may occur.



Do not use this product while driving.



Do not insert a metallic object (metal stick or hair pins, etc) or flammable objects in the product. Do not drop such objects on the product either.



## Caution

Not following the instruction may result in a light accident or damage.



## Cautions



Do not place MP3 player near a magnet or within the magnetic field.



Do not drop an object or give shock on the product.



Clean this product with soft cloth.



Do not operate the product near water, dust, or soot.



Do not disassemble, repair, or remodel the product.



Do not disconnect the USB cable while operating MP3 player after connecting MP3 player to your PC with USB cable. Otherwise, the data may get lost.



Back up important data (Note that the manufacturer is not responsible for the loss of major data caused by your mistake)



Do not place an object on the product.

# General information of MP3 player

## Converting video file

MP3 player can be only played the video files downloaded via LG Media Center.  
For details about download, see the Help menu [Converting video file] on LG Media Center.

## PC Connection Setting

### Media Device(MTP) Mode

You should download music files via LG Media Center or Windows Media Player 10 or higher.  
You should download video, photo, and text files via LG Media Center.

You can copy data files to the Data folder. (You can't see the data folder in your MP3 player.)

### Removable Disk(MSC) Mode

You can copy the Media file to the Removal Disc. (But you should download video files via LG Media Center.)

## Supplying Power via USB

- If the battery status is low when connecting MP3 player to your PC with USB cable MP3 player may not be connected for a few minutes.
- If the battery is fully discharged, the LCD turns off for a few minutes even during connecting.
- If your PC is suspended, MP3 player is also suspended.
- If MP3 player is suspended, the LCD turns off and the charging stops. After an hour, MP3 player turns off automatically.

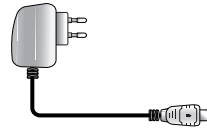
## Package contents



MP3 player



USB cable



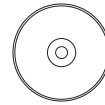
AC adapter



Earphones



Quick Setup Guide



Software CD  
(Including a detailed manual)

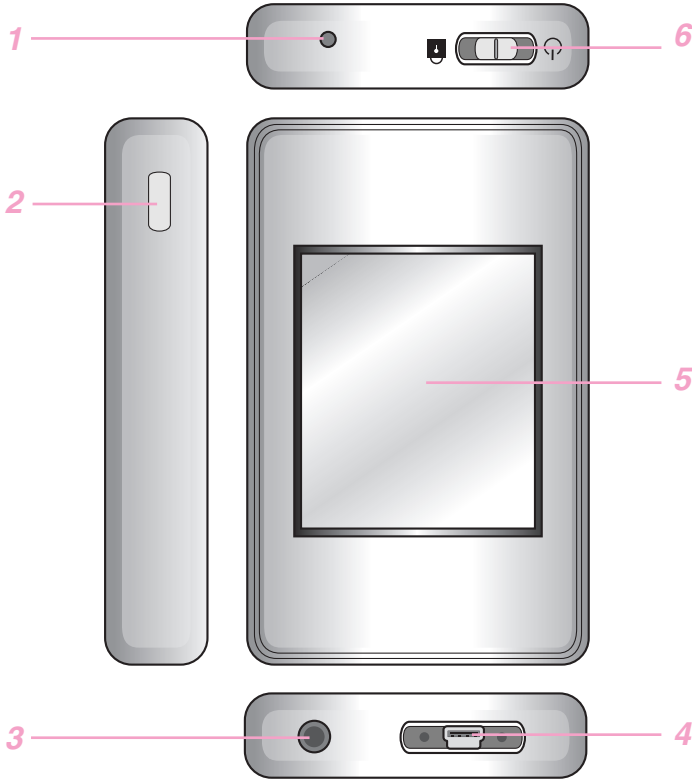
- The images inserted herein are examples to make users understand the more easily and may be little bit different from the real product.
- The contents of the product are subject to change without prior notice for functional improvement.
- Radio function is optional depending on the models.
- An AC adapter may not be supplied depending on the models.
- Contact with one of call centers supplied with this quick setup guide to buy an AC adapter.

## Option by models

| Model name | FM Radio | AC adapter |
|------------|----------|------------|
| MF-FM37S   | O        | X          |
| MF-FM37E   | X        | X          |
| MF-FM37F   | O        | O          |
| MF-FM37Y   | X        | O          |



## Name of each component



1 Microphone hole/ RESET button

2 Record (REC) button

3 Earphone jack

4 USB port

5 LCD (\*Touch screen)

6 • Power on/off switch (⏻)

• Hold switch (🔒)

### \* Precautions in using the touch screen

- Use the touch screen with clean and dry hands.
  - In a humid environment, wipe out any moisture on the touch screen before using.
- Do not press the touch screen hard to make it work.
  - If you apply too much strength, it can damage the sensor of the touch screen.
- Touch the point that you want to work in order to operate the function correctly.
- Be careful not to have any conductive material such as metallic object on the touch screen. It can cause malfunctions.



# Installing software

## Before installing the operating program

**Check the specifications of your PC before using MP3 player.**

### Minimum system requirements

- CD-ROM Drive
- Pentium III or higher level CPU / 128MB or larger memory
- 300MB or larger hard disc space, 800 X 600 mode
- Hi-color (16 bit) or higher level video card, Sound card

### Operating environment

The MTP mode is applied to the PC equipped with Windows XP (SP1) or higher-version OS or the Windows Media Player 10 or higher. To the lower-version OS, the MSC mode is applied.

### Windows Media Player 10

- You can download the file using Synchronize with Windows Media Player 10 menu.
- For more information, see the Help menu of Windows Media Player 10.

### LG Media Center

- Windows 2000/XP
- Windows Media Player 10 or higher / Internet Explorer 6.0
- Windows Media Player or Internet Explorer will be automatically installed during installation of the LG Media Center. Internet connection must be connected in order to install Internet Explorer.
- The LG Media Center is recommended for MTP mode.

## About LG Media Center

The LG Media Center program is an integrated data management program developed for users to more conveniently use the MP3 player.

### Features of the LG Media Center

You can efficiently manage music, video, photo, and text files through the Media Library rule and download them to the MP3 player.

### Contents Service menu

- Music Store: Music purchase, Streaming service
- Media Cast: Music, vide, broadcasting service purchase (Period-based service)
- For more information, see the Help menu of the program or visit [www.lge.com](http://www.lge.com).

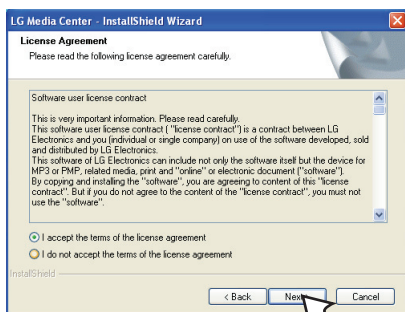
# Installing software

## Installing LG Media Center

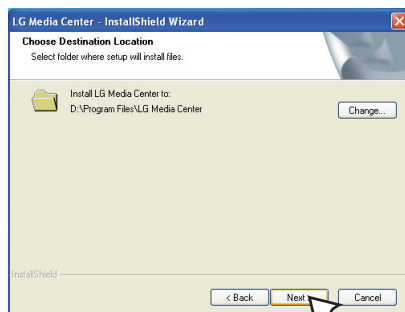
- 1 Insert the operation program CD into the CD-ROM.
- 2 Select [LG Media Center].



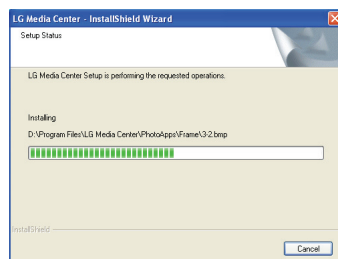
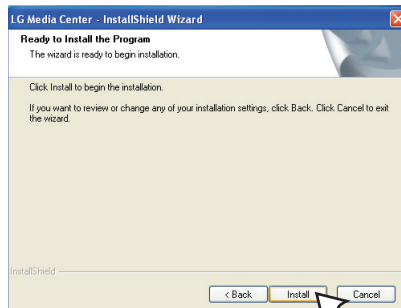
- 3 Follow the displayed instructions.
- 4 Read the License Agreement. Select the check box and click [Next].



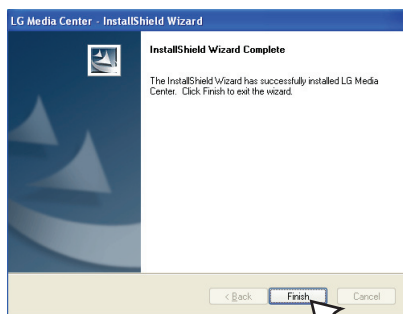
- 5 Select the installation path and click [Next].



- 6 Click [Install] to start installation.



- 7 After finishing the installation, click [Finish].



- 8 Click [Start] ⇒ [All Programs] ⇒ [LG Media Center] ⇒ [LG Media Center] to start the program.

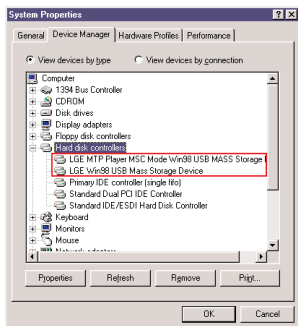


During installation of the LG Media Center, you can install the Windows Media Player and the Internet Explorer for an operating environment.

# Installing software

## Installing Win98SE MSC Device Driver

- 1 Execute LGE203053 inst.bat under Drivers => Win98SE folder in the CD-ROM.
- 2 Reboot the PC and connect the MP3 player to the USB port.
- 3 The installed device driver can be used as a portable disc in the Windows Explorer.
- 4 Check the installation status in System Properties as shown below.



## Installation of the Adobe Acrobat Reader

- 1 Insert the operation program CD into the CD-ROM.
- 2 Select [Adobe Acrobat Reader].



- 3 Follow the displayed instructions.

## View the manual

- 1 Insert the operation program CD into the CD-ROM.
- 2 Select [Manual].



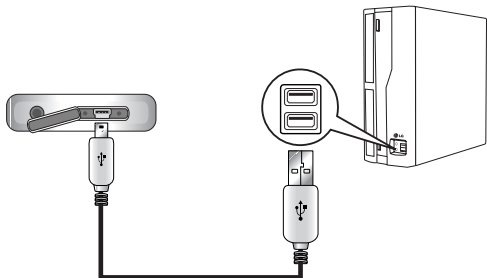
- 3 You can see the manual.



You must install the Adobe Acrobat Reader to read the manual.

## To connect the USB cable

- 1 Connect one end of the USB cable to the USB port of the PC and the other to the USB port of MP3 player.
  - Check whether both ends are correctly plugged in.



- 2 If the USB device is normally recognized after the cable is connected, the "USB connected" and firmware version appear on LCD.
- 3 In case of a correct connection, an icon will be displayed on the task bar of the PC.
  - The icon shapes on the task bar may differ depending on the OS of the PC.

### Note

- The MP3 player may not operate properly because of other USBs connected to the PC.
- You can not use the touch screen when the USB device is connected.


## To disconnect the USB Cable

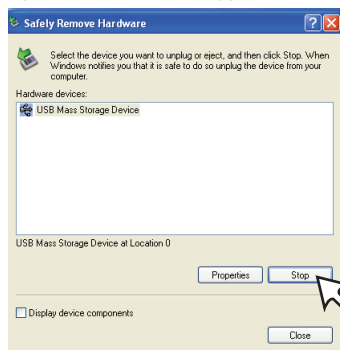
### Media Device(MTP) mode

Disconnect the USB cable from the PC after checking whether a file is transferring. If the file is transferring, disconnect it after the transfer is completed.

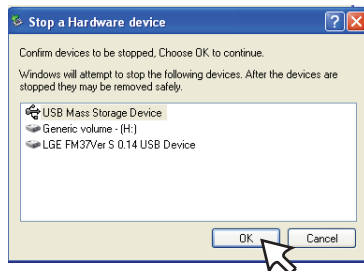
### Removable Disk(MSC) mode

This feature is to safely remove MP3 player from the PC after uploading or downloading the files.

- 1 Double-click on the Remove Hardware  icon on the task bar of the PC.
- 2 Click [Stop] when the window appears.



- 3 Click [OK].

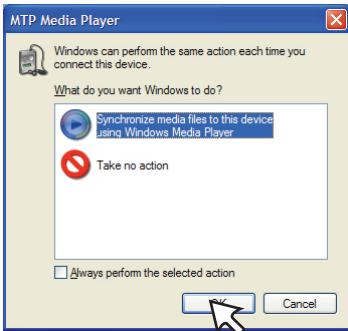


- 4 After a message that the large-capacity USB storage can be safely removed is displayed, remove MP3 player from the PC.
  - If the USB cable is disconnected while storing or deleting the file, the data may get lost.

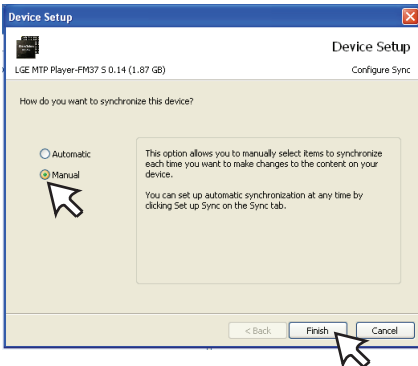
## To download files - MTP mode

MP3 player will be recognized as a mobile device, not a mass storage, and will interwork with the Windows Media Player 10 or higher

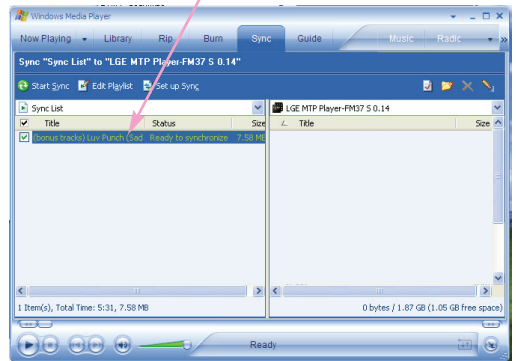
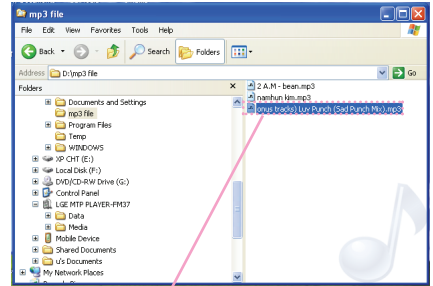
- 1 Check whether the device is connected through the MTP mode.
  - [Settings] of Home Menu ⇒ [General] ⇒ [PC Connection Setting] ⇒ [Media Device (MTP)]
- 2 Connect one end of the USB cable to the USB port of the PC and the other to the USB port of MP3 player.
  - Check whether both ends of the cable are correctly plugged in.
- 3 The window "MTP Media Player" appears in the PC.
  - 1) a. "Synchronize media files to this device" ⇒ "OK"



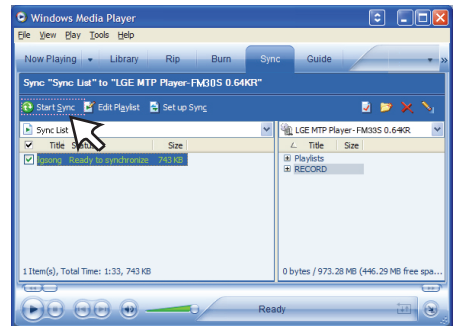
b. "Manual" ⇒ "Finish"



c. Drag the synchronizing files to the left window.

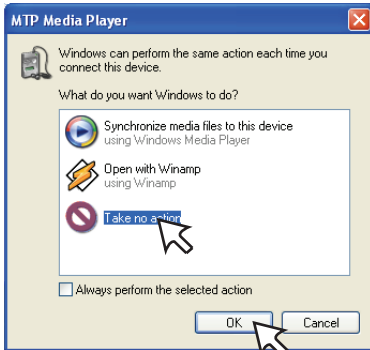


d. Click "Start Sync".

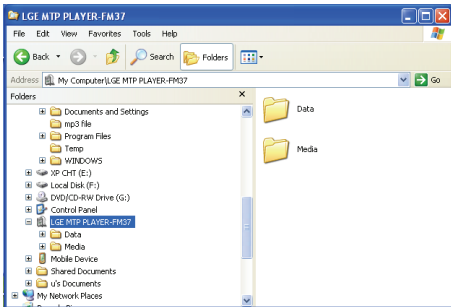


# Connecting to the PC

2) a. "Take no action" ⇒ "OK"

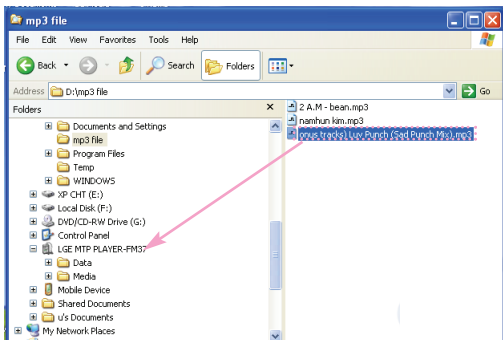


b. Click "LGE MTP PLAYER-FM37".



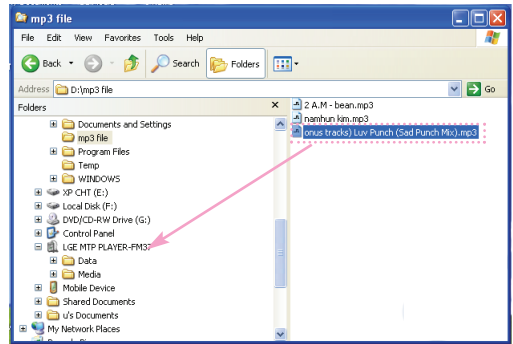
- Data folder: You can download or upload all data files.
- Media folder: You can download only the file that Windows Media Player 10 or higher supports.

4 Drag the file to copy to the portable media drive.



## To download files - MSC mode

- 1 Check whether the device is connected through the MSC mode.
  - [Settings] of Home Menu ⇒ [General] ⇒ [PC Connection Setting] ⇒ Removable Disk (MSC)
- 2 Connect one end of the USB cable to the USB port of the PC and the other to the USB port of MP3 player.
  - Check whether both ends of the cable are correctly plugged in.
- 3 Check whether a new drive has been added in the Windows Explorer in the PC.
  - The drive name may differ depending on the OS.
- 4 Drag the file to copy to the removable disc drive.



- Disconnecting the USB cable while the file is being copied may cause malfunction of MP3 player.
- MP3 player will be charged when connected to the PC through the USB cable.
- Download video files from LG Media Center.
- Download the JANUS DRM-applied files through the Windows Media Player 10 or higher, or LG Media Center (MTP Mode only)
- Download X-Sync DRM-applied files through the LG Media Center.

# Connecting to the PC

## To download files - LG Media Center

You can download from MP3 player the files you want via LG Media Center.

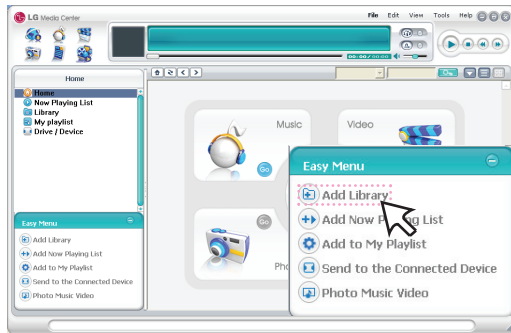
For details, see the Help menu on LG Media Center.

- You can check the downloaded files in the Music, Video, Photo, or Document folder.
- OGG files only are supported in MSC mode.

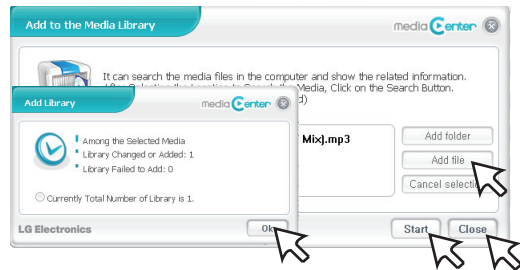
1 Connect one end of the USB cable to the USB port of the PC and the other to the USB port of MP3 player.

- Check whether both ends of the cable are correctly plugged in.

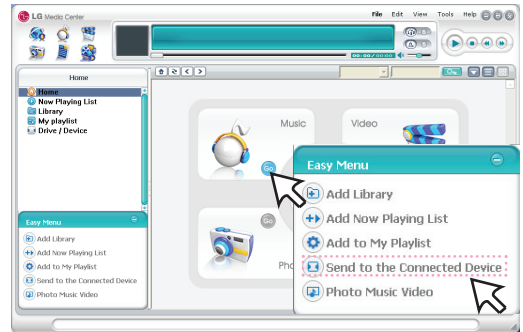
2 Execute the LG Media Center and then click [Add Library].



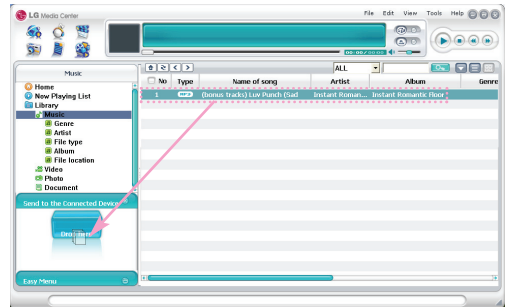
3 [Add file] ⇒ Selecting the downing file (Ex: Music file) ⇒ [Start] ⇒ [OK] ⇒ [Close]



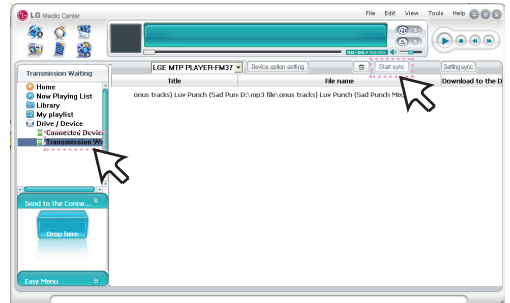
4 [Music] ⇒ [Send to the Connected Device]



5 Drag the files to the [Send to the Connected Device].



6 Click [Transmission Waiting List] ⇒ [Start sync].



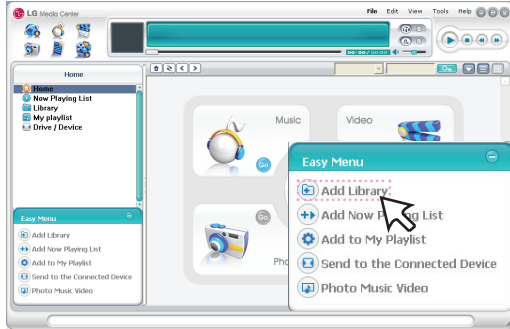


# Converting video file

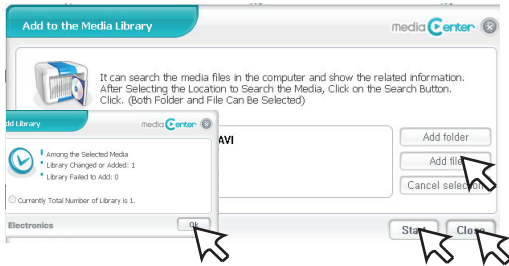
MP3 player can only play the video files downloaded via LG Media Center.

For details about download, see the Help menu [Converting video file] on LG Media Center.

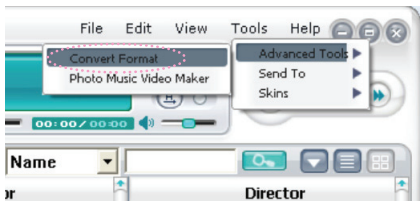
- 1 Execute the LG Media Center and then click [Video].
- 2 Click [Add Library].



- 3 [Add file] ⇒ Selecting the downloading file (Ex: Music file) ⇒ [Start] ⇒ [OK] ⇒ [Close]

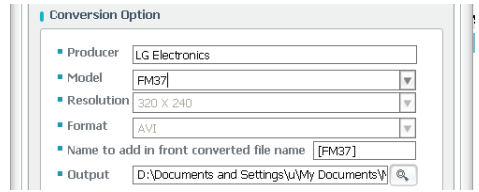
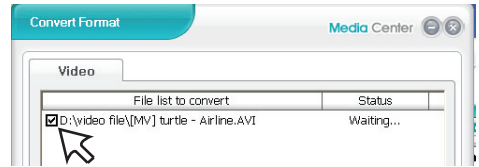


- 4 Selecting the video file ⇒ [Tools] ⇒ [Advanced Tools] ⇒ [Convert Format]



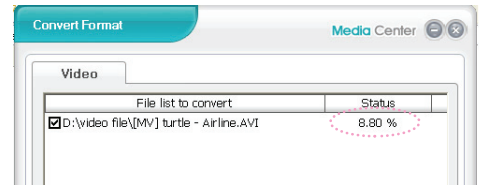
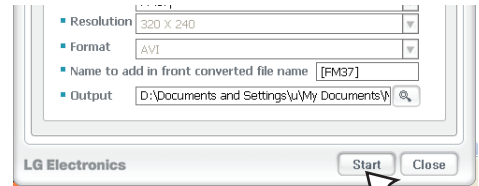
- You can add other video file when you press [Add file] in "Add to the Media Library" menu.
- You can delete the video file when you press the [Cancel selection] after selecting the video file you want to delete in "Add to the Media Library" menu.

- 5 Check the video file and then select the Model, Resolution, and Output in [Convert Format] menu.



- 6 Click [Start].

  - The video file is converted.



- After converting, check the video file where the file is .
- For details, see the Help menu on LG Media Center.

# Firmware upgrade

## To upgrade firmware automatically

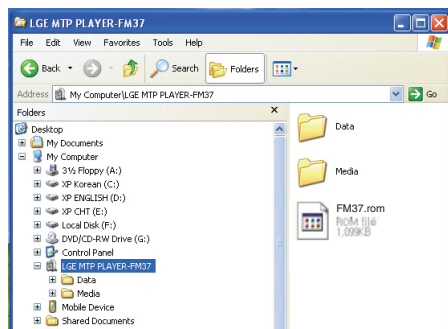
Connect MP3 player to the PC where the LG Media Center is installed to download a new version of firmware.

- Functions only in the Internet-connected PC.
  - Back up important data before upgrading, or the data may get lost.
- 1 Connect one end of the USB cable to the USB port of the PC with the LG Media Center installed and the other to the USB port of MP3 player.
  - 2 The LG Media Center will compare the firmware versions of MP3 player and the server. If it detects a new firmware version, it asks you whether to upgrade the version.
  - 3 Click [OK] to copy new firmware to the MP3 player.
  - 4 Upon updating, new version firmware will be copied to the MP3 player.
  - 5 To safely remove the device, remove the USB cable. (In MSC mode)
  - 6 When "Firmware upgrade?" message is displayed, click the REC.
  - 7 The firmware updating progress bar will be displayed. After the upgrade is completed, the power will be automatically turned off.
    - Wait till the power is automatically turned off.
  - 8 Turn on the MP3 player and check the upgraded version of firmware.
    - You can check the firmware version in Home Menu [Settings] of Home Menu ⇒ [General] ⇒ [System Info]

## To upgrade firmware manually

You can upgrade the firmware for addition and change of features of MP3 player and for functional improvement.

- 1 Check the model number at the company website, and download the latest version.
  - <http://www.lge.com> ⇒ Support ⇒ Download ⇒ Software (The contents may differ depending on the website.)
- 2 Decompress the downloaded files. Then, FM37.rom file will be displayed.
- 3 Connect the USB cable to the MP3 player and the PC.
- 4 Check whether a new drive has been added in the Windows Explorer in the PC.
  - The drive name may differ depending on the OS.
- 5 Select the FM37.rom file and copy it to the newly added drive.
  - In MSC mode: Highest root
  - In MTP mode: Data folder



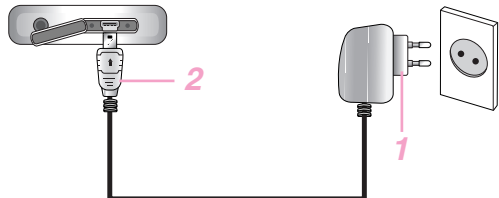
- 6 To safely remove the device, remove the USB cable.
- 7 When "Firmware upgrade?" message is displayed, click the REC.
- 8 The firmware updating progress bar will be displayed. After the upgrade is completed, the power will be automatically turned off.
  - Wait till the power is automatically turned off.
- 9 Turn on the MP3 player and check the upgraded version of firmware.
  - You can check the firmware version in Home Menu [Settings] of Home Menu ⇒ [General] ⇒ [System Info]

# Charging the MP3 player

## AC adapter

Charge the MP3 player with the supplied AC adapter.

- 1 Connect the AC adapter to the AC outlet.
- 2 Connect the USB cable of AC adapter to the USB port of MP3 player.



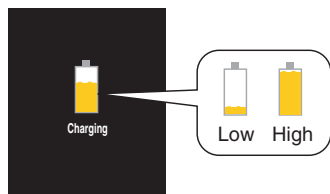
- On the display of MP3 player, the charging status will be displayed as follows: (Charging time: 3 hours)

### Power-on status

Charging status



### Power-off status



### Note

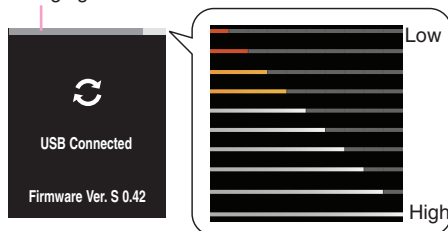
- Do not disconnect AC Adapter before booting of MP3 player is completed. The data may get lost.
- Use the supplied AC adapter when you charge the MP3 player, otherwise the MP3 player may malfunction.
- Do not charge MP3 player for longer than 12 hours. Overcharge and overdischarge may shorten the battery life.
- If you transfer files on charging, the charging time will be extended.
- Charge the battery in a place with a normal temperature.

## USB cable

MP3 player will be also automatically charged when connecting the PC and MP3 player with USB cable.

- On the display of MP3 player, the charging status will be displayed as follows: (Charging time : More than 4 hours)

Charging status




### Note

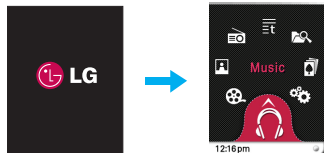
- MP3 player may completely discharged first time you purchase the product. Charge the battery first.
- Charging time may vary according to PC system requirements or operating environment. If your PC is suspended, MP3 player is not charged.
- Do not charge MP3 player for longer than 12 hours. Overcharge and overdischarge may shorten the battery life.
- After checking the state of a remaining battery of note book, connect the USB cable and charge it.
- Do not charge it when the remaining battery of the note book is not enough.
- If you transfer files on charging, the charging time will be extended.
- Charge the battery in a place with a normal temperature.

## To Turn on/off the power


### Turn on the power

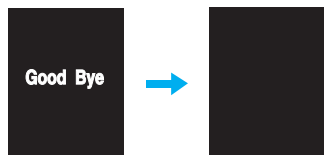
Push the power on/off switch in the direction of the  until MP3 player is turned on.

- Downloading files in MSC mode may take time for rebuilding depending on the number of files.







### Turn off the power

Push the power on/off switch in the direction of the  until MP3 player is turned off.



## Lock feature

**This feature locks MP3 player to prevent it from operating when you accidentally press a button.**

- 1 Push the power on/off switch in the direction of the  to lock MP3 player.
  - Upon locked status,  will be displayed on LCD.
  - Upon pressing of each button,  will appear for two seconds and disappear.
- 2 Push the power on/off switch in the opposite direction of the  button to unlock the device.


## Reset feature

**This feature is to reset the player when the MP3 player does not operate normally.**

- 1 Prick the hole with a sharp object when the MP3 player does not operate normally.

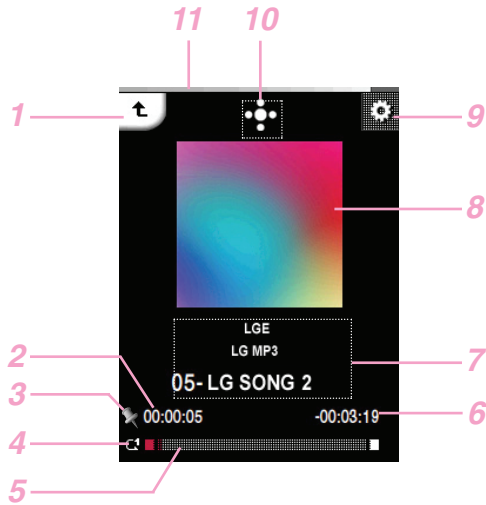


RESET button

- 2 After the power is turned off, push the power on/off switch in the direction of the . Then, the power will be turned on.
  - When MP3 player is connected to PC with USB cable, it will be automatically turned on.
  - Reset function initializes setting values.

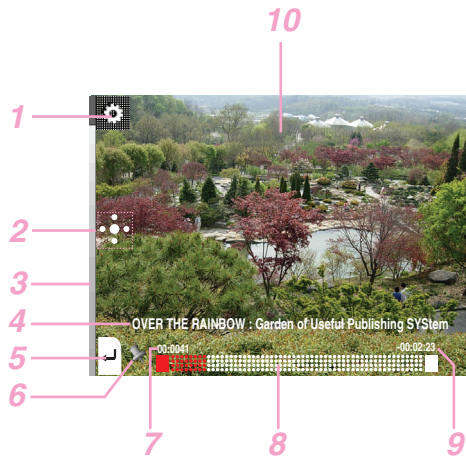
# Playing screen of each mode

## Music screen



- 1** Moves to the previous menu or home menu.
- 2** Playback time
- 3** Bookmark display
- 4** Play mode display
- 5** Playing time bar
- 6** Remaining time
- 7** Music information display (Album, Artist, Title)
- 8** Image/Lyrics
- 9** Moves to the EZ menu.
- 10** Moves to the control box. (Play/ Pause/ Volume/ Skip/ A-B repeat)
- 11** Battery status

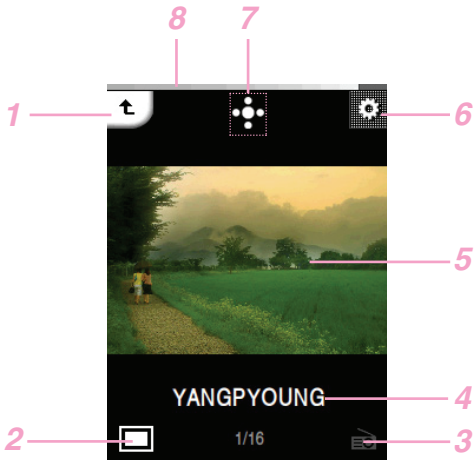
## Movie screen



- 1** Moves to the EZ menu.
- 2** Moves to the control box. (Play/ Pause/ Volume/ Skip)
- 3** Battery status
- 4** Title of the video file
- 5** Moves to the previous menu or home menu.
- 6** Bookmark display
- 7** Playback time
- 8** Playing time bar
- 9** Remaining time
- 10** Playing screen

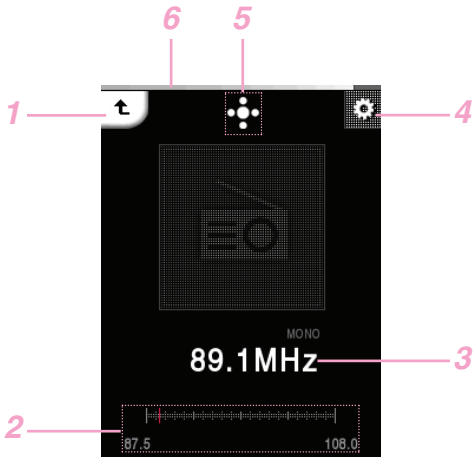
# Playing screen of each mode

## Photo screen



- 1 Moves to the previous menu or home menu.
- 2 Enlarging/ Reducing the photo
- 3 Music/ Radio display
- 4 File name
- 5 Photo screen
- 6 Moves to the EZ menu.
- 7 Moves to the control box. (Slide show/ Volume/ Skip)
- 8 Battery status

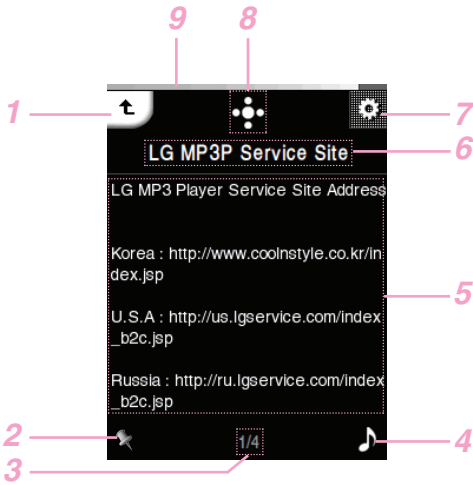
## FM radio screen (Option by models)



- 1 Moves to the previous menu or home menu.
- 2 Non preset mode/ Preset mode
- 3 FM radio frequency display
- 4 Moves to the EZ menu.
- 5 Moves to the control box (Play/ Mute/ Volume/ Mode)
- 6 Battery status

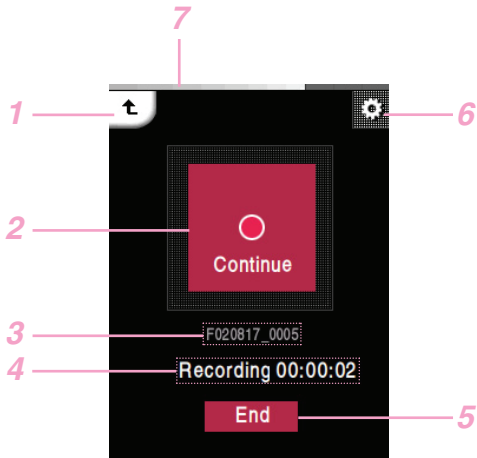
# Playing screen of each mode

## Text screen



- 1 Moves to the previous menu or home menu.
- 2 Bookmark display
- 3 Current page/ Total page
- 4 Music/ Radio display
- 5 Text display
- 6 Title of the text file
- 7 Moves to the EZ menu.
- 8 Moves to the control box. (Auto page/ Volume/ Skip)
- 9 Battery status

## Recording screen



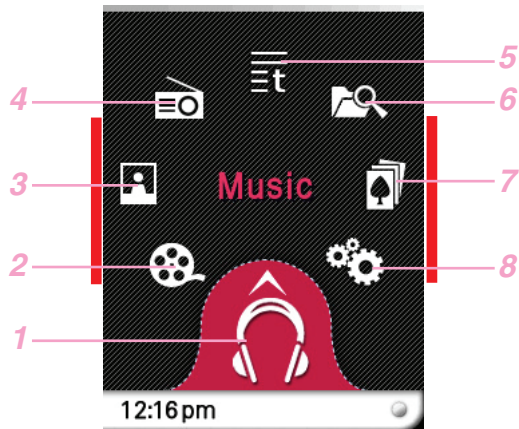
- 1 Moves to the previous menu or home menu.
- 2 Record display (Start/ Pause/ Continue)
- 3 Title of the recording file
- 4 Recording standby/ Recording time
- 5 Recording end
- 6 Moves to the EZ menu.
- 7 Battery status

# Initial setting of Home Menu

## Home menu screen

You can operate various features by using the Home menu.

\* Home menu screen varies according to product models (FM radio reception is optional.)

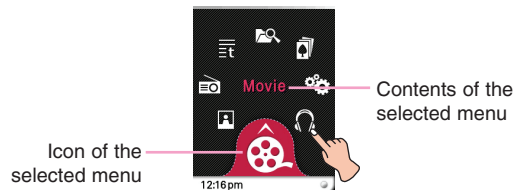


The section marked with red line is specified as "middle part" in this manual.

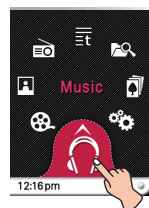
- 1 Music : Moves to the music mode.
- 2 Movie : Moves to the video mode.
- 3 Photo : Moves to the image mode.
- 4 Radio : Receives and records FM broadcasting. (FM radio reception is optional.)
- 5 Text : Moves to the text mode.
- 6 All Files : Displays the playable total list.
- 7 Game : Moves to the game mode.
- 8 Settings : Sets the operating environment of the player.

## General operations of Home menu

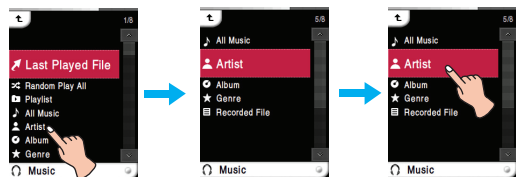
- 1 Turn the MP3 player on.  
- The home menu appears on LCD.
- 2 Press the icon of a desired menu.



- 3 Press the icon of selected menu.



- 4 Press the desired menu to move to the second level and then press the selected menu to execute the menu.



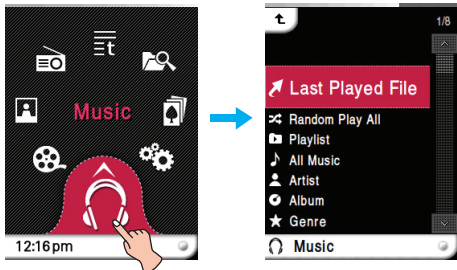
### Note

- Press **←** to return to the previous menu during operation.
- Press and move **↘** to the right downward direction to return to the home menu during operation.
- Press and move **↖** to the left upward direction to return to the previous menu in the home menu.



# Playing music

## Music menu



## Last Played File

Plays the last played music file.

## Random play all

Plays the music file randomly.

- When you set [Random play all] during operation, the play mode is changed to [Random all].

## Playlist

### • My Playlist

You can select and manage your own playlist.

|      |            |                                       |
|------|------------|---------------------------------------|
| Edit | Delete All | Deletes all files in my playlist.     |
|      | Add Music  | Adds the desired file in my playlist. |

### • PC Playlist :

The playlist created in the WMP(Windows Media Player 10 or higher) or the LG Media Center can be automatically displayed on the MP3 player through the Auto Sync mode.

- When the playlist and corresponding files are unchecked in the Auto Sync mode, music will be deleted in the MP3 player. It is recommended to keep all Music files always checked.

## All music

Displays the total music.

## Artist

Displays the music by artist.

## Album

Displays the music by album.

## Genre

Displays music by genre.

## Recorded File


Plays the radio recording file (Option by models) or voice recording file.

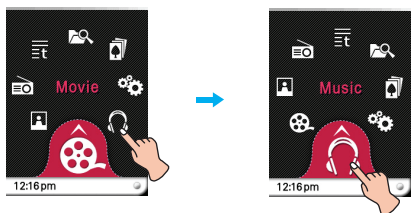
### Note

The selected file is played when you select the desired file.

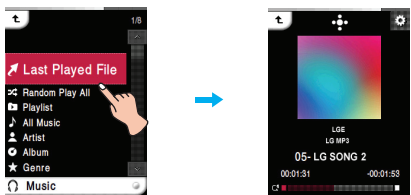
# Playing music

## To play the music file

- 1 Select  of the home menu.

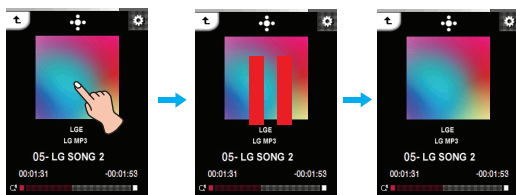


- 2 Select the desired menu and then press a music file you want to play.  
- If you select the [Last Played File] menu, the last played music file will be played at once.

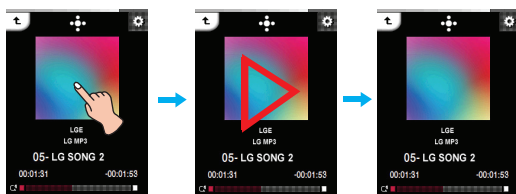


## Pause


- 1 Press the middle part of LCD during playback.

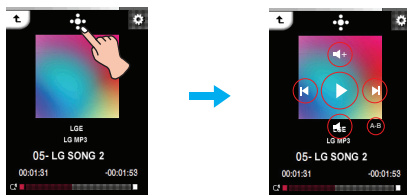






- 2 Press the middle part of LCD again to resume playback.



## Using the control box

- 1 Press  during playback.
  - The control box appears on LCD.
  - If the control box does not appear on LCD, adjust the control box. [Ez menu] ⇒ [Control Box] ⇒ [On] (Page 29)

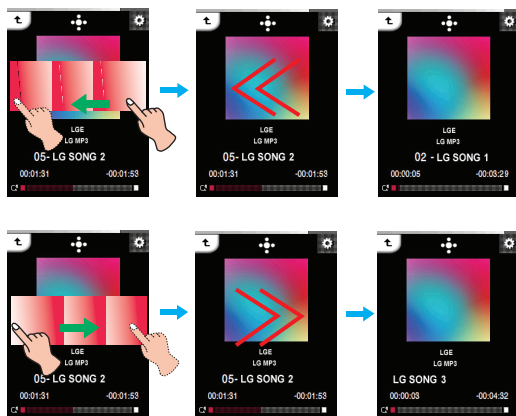


- 2 Press  to pause.
  - The  appears on LCD.
- 3 Press  to resume playback.
- 4 Press  or other space to remove the control box.

# Playing music

## To play the previous or next file

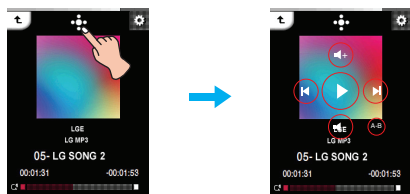
Drag the middle part of LCD in the direction of the left/right during playback.



- If you drag the LCD from right to left after five seconds of playing time, the current file will be played from the beginning.
- If you drag the LCD from right to left within five seconds of playing time, the previous file will be played from the beginning.

## Using the control box

- 1 Press during playback.
  - The control box appears on LCD.

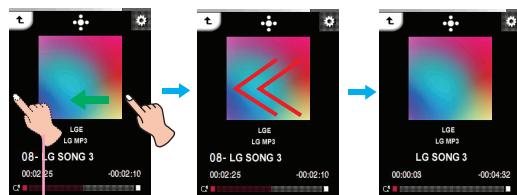


- 2 Press or button to play the previous or next file.

- If you press after five seconds of playing time, the current file will be played from the beginning.
- If you press within five seconds of playing time, the previous file will be played from the beginning.

## Speed search

Drag the LCD during playback and then press and hold the LCD.



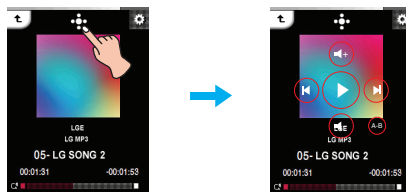
Release at a point you want.



Release at a point you want.

## Using the control box

- 1 Press during playback.
  - The control box appears on LCD.



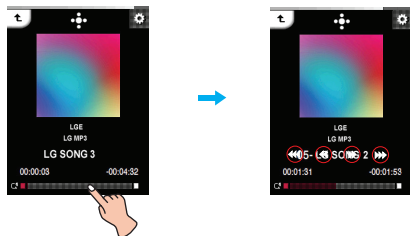
- 2 Press and hold or button for two seconds during playback. And then release at a point you want.

# Playing music

## To play from a specific point

1 Press the playing time bar to play from a specific point you want during playback.

- The control box appears on LCD.



2 Press / / / .

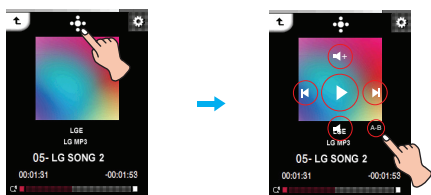
- : Moves to the point of playing time before 1 minute. If the playing time is less than 1 minute, the current file moves to the beginning point.
- : Moves to the point of playing time before 5 seconds.
- : Moves to the point of playing time after 5 seconds.
- : Moves to the point of playing time after 1 minute. If the remaining time is less than 1 minute, the current file moves to the beginning point of next music.

## A-B section repeat

This feature can only set the current playing music.

1 Press during playback.

- The control box appears on LCD.



2 To set the starting point during playback, press .

- "A" icon appears on LCD.

3 To select the ending point, press again. Then, the Repeat feature will be set.

- "B" icon appears on LCD.

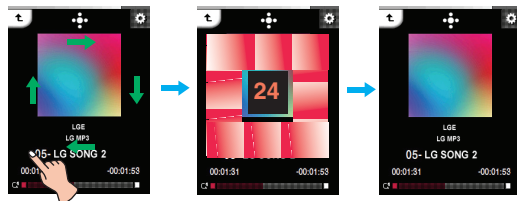
4 To cancel Repeat feature, press again.

- "A" and "B" icons disappear on LCD.

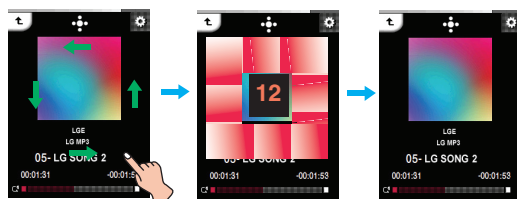
## Volume control

Keep pressing and turn the point you press on LCD clockwise/counterclockwise during playback.

### Volume up



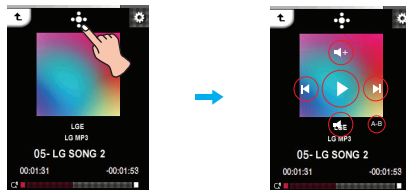
### Volume down



## Using the control box

1 Press during playback.

- The control box appears on LCD.



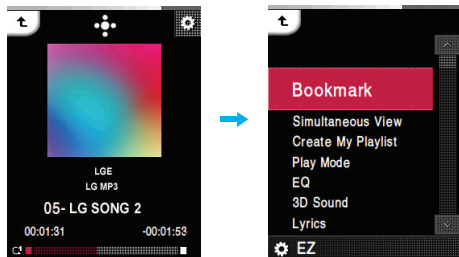
2 Press or to control the volume.

# Playing music

## EZ menu of the Music

You can set the desired function or switch to other modes using the EZ menu.

Press  to select the EZ menu during playback.





## Bookmark

You can start playback from memorized point.

- **Set** : Sets the bookmark.
- **Move** : Executes the bookmark.
- **Cancel** : Cancels the bookmark.

## Simultaneous View

- **Photo** : You can view the photo while listening to the music simultaneously.  
[Photo] ⇒  (Moving to EZ menu of the photo) ⇒ [Music] ⇒ [Cancel]/[Play Previous]/[Play Next]/[Back]  
- [Cancel] : Stops the music playback.  
- [Play Previous] : Plays the previous music.  
- [Play Next] : Plays the next music.  
- [Back] : Moves to the music mode.
- **Text** : You can view the text while listening to the music simultaneously.  
[Text] ⇒  (Moving to EZ menu of the text) ⇒ [Music] ⇒ [Cancel]/[Play Previous]/[Play Next]/[Back]  
- [Cancel] : Stops the music playback.  
- [Play Previous] : Plays the previous music.  
- [Play Next] : Plays the next music.  
- [Back] : Moves to the music mode.

## Create My Playlist/Delete My Playlist

Creates or deletes files in my playlist.

## Play Mode

- **Repeat One**  
Plays the current file repeatedly.
- **Play All**  
Plays all music within the selected folder in order.
- **Repeat All**  
Plays all music within the selected folder repeatedly.
- **Random All**  
Plays all music within the selected folder randomly.
- **Random Repeat All**  
Repeats all music within the selected folder randomly.

## EQ

You can set the sound effect.

- **AUTOEQ, NORMAL, POP, ROCK, R&B/SOUL, HIPHOP/RAP, JAZZ, CLASSICAL, DANCE, LIVE, USER EQ**

## 3D Sound

You can experience 3D sound effects.

- **Off, 3D EXPANDER, STADIUM, CONCERT HALL, CLUB, ROOM, BASS BOOST, X-LIVE**

## Lyrics

You can show the lyrics if a music file supports the lyrics.

- **On** : Sets the lyrics view.
- **Off** : Cancels the setting of lyrics view.

## Brightness

You can adjust the brightness level from 0 to 9. The default brightness is 5.

## Background Setting

You can select the photo file for music background.

- **Album Art**  
Displays the album jacket during playback.
- **User Image**  
Displays the user's photo during playback.
- **Default Image**  
Displays the basic photo during playback.

## Control Box

You can select the control box.

- **On** : Displays the control box.
- **Off** : Cancels the display of control box.

## Delete File

- **Yes** : Deletes the playing file.
- **No** : Cancels the deleting of playing file.


## View Information

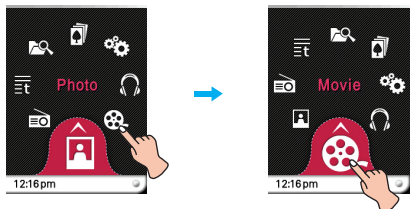
Displays the information of the playing file. (Bitrate, File Size, Sampling, Codec, Setting)

# Playing movie

## To play the movie file

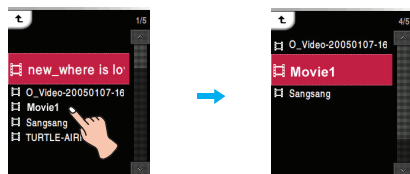
MP3 player can only play the video files downloaded via LG Media Center. For details about download, see the Help menu [Converting video file] on LG Media Center.

- 1 Select  of the home menu.



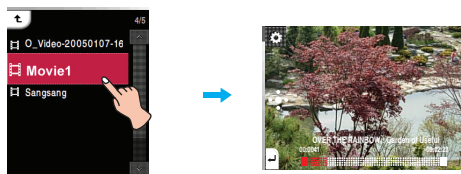
- 2 Select the desired file.

- The list is displayed on LCD.
- If there is no list, "No file" appears on LCD.



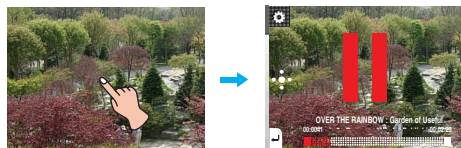
- 3 Press the desired file.

- The movie file is played.
- The movie file will be displayed on the horizontal screen.



## Pause

- 1 Press twice the middle part of LCD during playback.



- 2 Press twice the middle part of LCD again to resume playback.

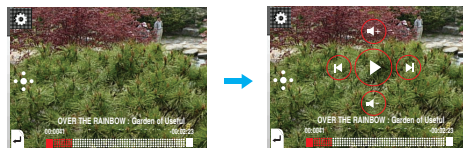


## Using the control box

- 1 Press the LCD during playback.

- 2 Press .


- The control box appears on LCD.
- If the control box does not appear on LCD, adjust the control box. [Ez menu] ⇒ [Control Box] ⇒ [On] (Page 33)



- 3 Press  to pause.

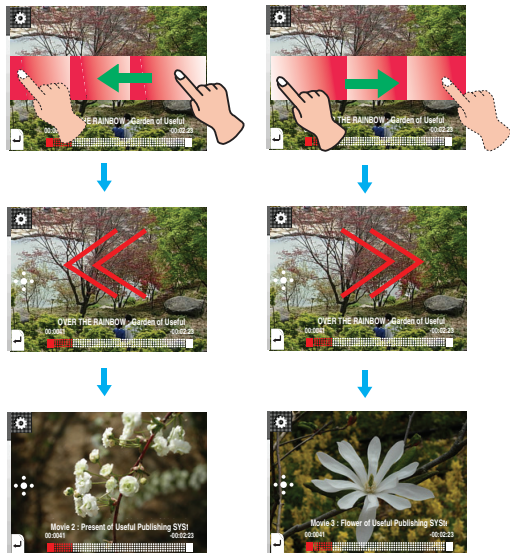
- The  appears on LCD.

- 4 Press  to resume playback.

- 5 Press  or other space to remove the control box.

## To play the previous or next file

- 1 Press the LCD during playback.
- 2 Drag the middle part of LCD in the direction of the left/right during playback.



- If you drag the LCD from right to left after five seconds of playing time, the current file will be played from the beginning.
- If you drag the LCD from right to left within five seconds of playing time, the previous file will be played from the beginning.

## Using the control box

- 1 Press the LCD during playback.
- 2 Press .
  - The control box appears on LCD.

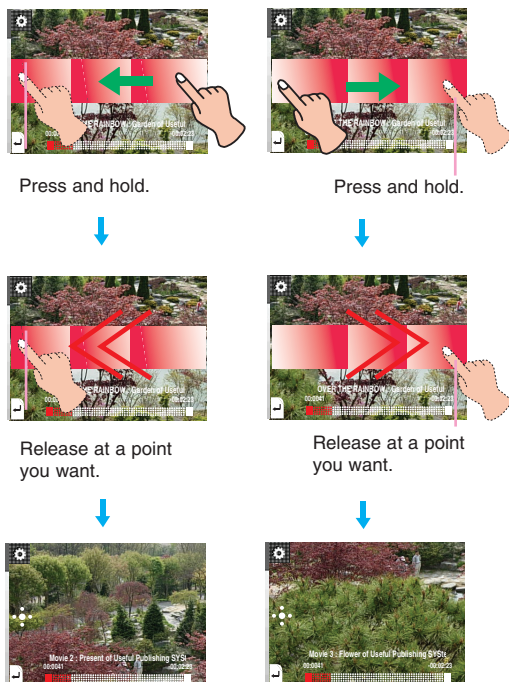


- 3 Press / to play the previous or next file.

- If you press after five seconds of playing time, the current file will be played from the beginning.
- If you press within five seconds of playing time, the previous file will be played from the beginning

## Speed search

- 1 Press the LCD during playback.
- 2 Drag the middle part of LCD in the direction of the left/right during playback and then press and hold the LCD.



## Using the control box

- 1 Press during playback.
  - The control box appears on LCD.

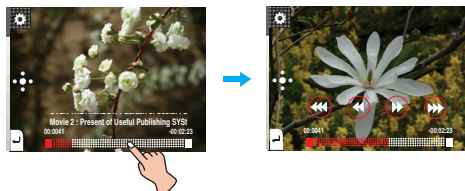


- 2 Press and hold / button for two seconds during playback. And then release at a point you want.

# Playing movie

## To play from a specific point

- 1 Press the LCD during playback.
- 2 Press the playing time bar to play from a specific point you want during playback.
  - The control box appears on LCD.



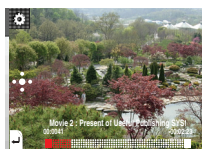
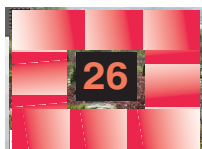
- 3 Press / / / .

- : Moves to the point of playing time before 1 minute. If the playing time is less than 1 minute, the current file moves to the beginning point.
- : Moves to the point of playing time before 5 seconds.
- : Moves to the point of playing time after 5 seconds.
- : Moves to the point of playing time after 1 minute. If the remaining time is less than 1 minute, the current file moves to the beginning point of next music.

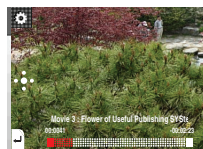
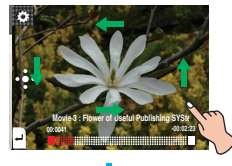
## Volume control

Keep pressing and turn the point you press on LCD clockwise/counterclockwise during playback.

### Volume up



### Volume down



## Using the control box

- 1 Press the LCD during playback.
- 2 Press .
  - The control box appears on LCD.



- 3 Press or to control the volume.

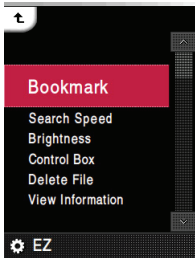


# Playing movie

## EZ menu of the Movie

You can set the desired function or switch to other modes using the EZ menu.

Press  to select the EZ menu during playback.



## Bookmark

You can move to the point you set while playing the video.

- **Set**  
Sets the bookmark.
- **Move**  
Executes the bookmark.
- **Cancel**  
Cancels the bookmark.

## Search Speed

You can set the playing speed of movies files.

- **1 time**  
Plays at an original speed.
- **2 times**  
Plays at 2 times speed.
- **3 times**  
Plays at 3 times speed.

## Brightness

You can adjust the brightness level from 0 to 9. The default brightness is 5.

## Control Box

You can select the control box.

- **On** : Displays the control box.
- **Off** : Cancels the display of control box.

## Delete File


- **Yes** : Deletes the playing file.
- **No** : Cancels the deleting of playing file.

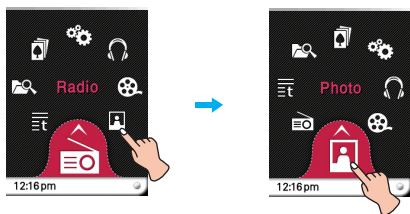
## View Information

Displays the information of the playing file. (File Name, Full Time , File Size, Setting)

# Viewing photo

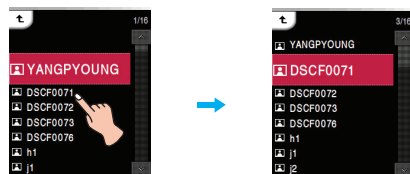
## To view the photo file

- 1 Select  of the home menu.



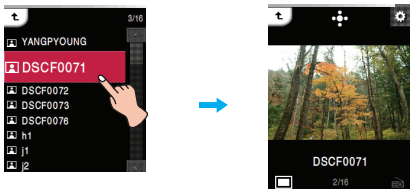
- 2 Press the desired file.

- The list is displayed on LCD.
- If there is no list, "No file" appears on LCD.



- 3 Press the desired file.

- The photo file appears on LCD.

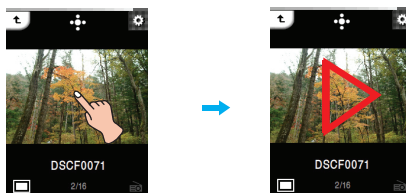


### Note

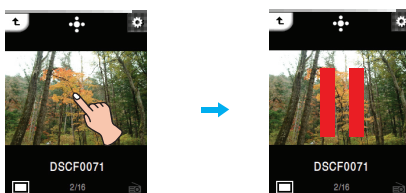
MP3 player may not be played a black-and-white photo or large-capacity file.

## To set the slide show

- 1 Press the middle part of LCD when a photo file is displayed.



- 2 Press the middle part of LCD again to pause.

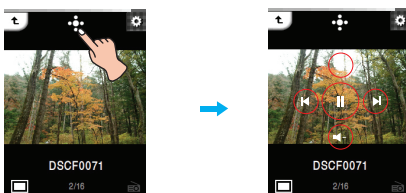


## Using the control box

- 1 Press  during playback.

- The control box appears on LCD.

- If the control box does not appear on LCD, adjust the control box. [Ez menu] ⇒ [Control Box] ⇒ [On] (Page 36)




- 2 Press  to set the slide show.

- The  appears on LCD.

- 3 Press  to pause.

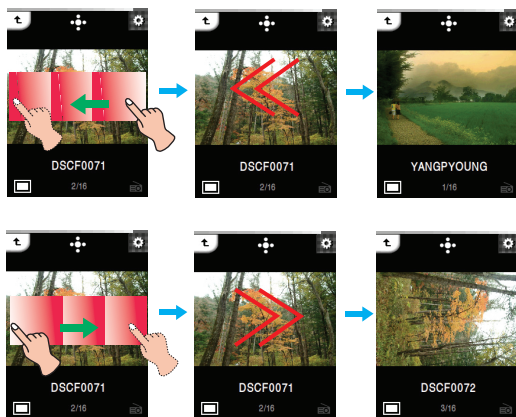
- The  appears on LCD.

- 4 Press  or other space to remove the control box.

# Viewing photo

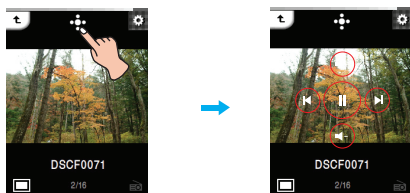
## To view the previous or next file

Drag the middle part of LCD in the direction of the left/right during playback.



## Using the control box

- 1 Press **⏏** during playback.  
- The control box appears on LCD.



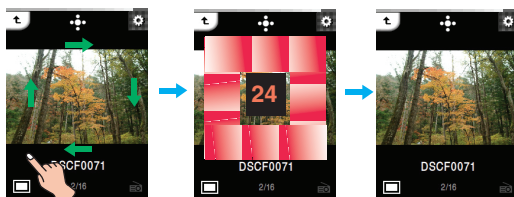
- 2 Press **⏮**/**⏭** button to view the previous or next photo.

## Volume control

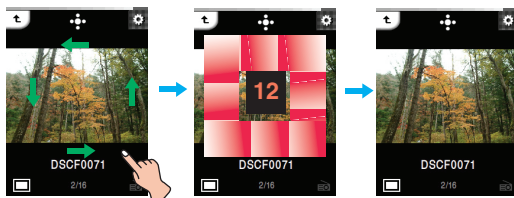
When you listen to music or radio while viewing the photo file, control the volume. (FM radio reception is optional.)

Keep pressing and turn the point you press on LCD clockwise/counterclockwise during playback.

### Volume up

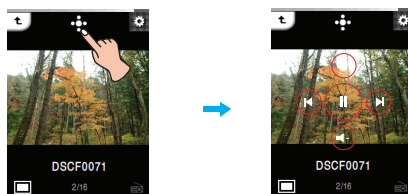


### Volume down



## Using the control box

- 1 When you listen to music or radio while viewing the photo file, press **⏏**.  
- The control box appears on LCD.




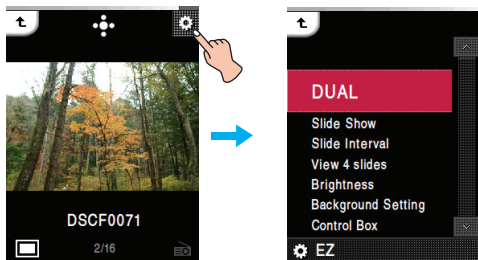
- 2 Press the **⏮** or **⏭** button to control the volume.

# Viewing photo

## EZ menu of the Photo

You can set the desired function or switch to other modes using the EZ menu.


Press  to select the EZ menu while viewing the photo.



## DUAL


You can listen to music or radio while viewing the photo file. (FM radio reception is optional.)

- **Music** : You can listen to music while viewing the photo file.

[Music] ⇒ [] (Moving to EZ menu of the photo) ⇒ [Music] ⇒ [Cancel]/[Play Previous]/[Play Next]/[Back]

- [Cancel] : Stops the music playback.
- [Play Previous] : Plays previous music.
- [Play Next] : Plays next music.
- [Back] : Moves to the music mode.

- **Radio** : You can listen to radio while viewing the photo file.

[Radio] ⇒ [] (Moving to EZ menu of the photo) ⇒ [Radio] ⇒ [Cancel]/[Previous Channel]/[Next Channel]/[Back]

- [Cancel] : Stops the radio reception.
- [Previous Channel] : Receives the previous channel.
- [Next Channel] : Receives the next channel.
- [Back] : Moves to the radio mode.

## Slide Show

You can set the slide show to On/Off.

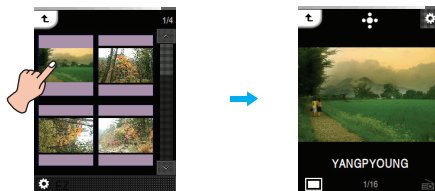
- **On**  
Turns on the slide show.
- **Off**  
Turns off the slide show.

## Slide Interval

You can set the slide show interval to [2 sec], [3 sec], [4 sec], or [5 sec].

## View 4 slides

You can show 4 slides on one screen.



## Brightness

You can adjust the brightness level from 0 to 9. The default brightness is 5.

## Background Setting

- **Music Background**  
You can select photo file to music background on the photo mode.
- **Radio Background**  
You can select photo file to music background on the radio mode.

## Control Box

You can select the control box.

- **On** : Displays the control box.
- **Off** : Cancels the display of control box.

## Delete File

- **Yes** : Deletes the playing file.
- **No** : Cancels the deleting of playing file.

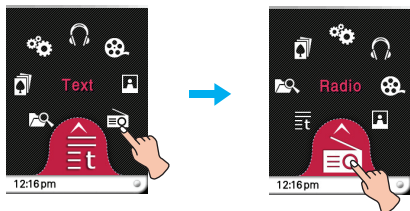
## View Information

Displays the information of the playing file. (File Name, File Kind, File Size, Setting)

# Listening to the FM radio (Option by models)

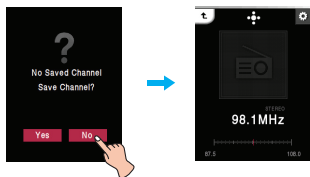
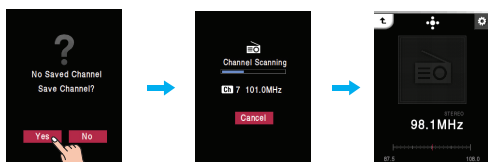
## To preset to the FM radio

1 Select of the home menu.



2 If you store the channel press [Yes], otherwise press [No].

- You can save maximum 20 channels and existing channels will be deleted.
- In an area with weak reception, the detected channels may be less than 20.



3 The FM radio broadcasting is received.

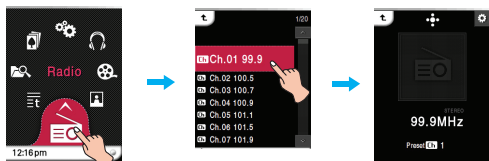
## To listen to the FM radio

1 Select of the home menu.

- The stored channel list is displayed on LCD.

2 Select the channel you want on the channel list.

- You can listen to the FM radio.



Home menu

Channel list

Preset mode

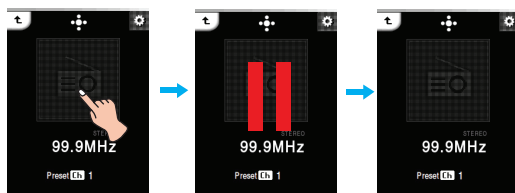


### Note

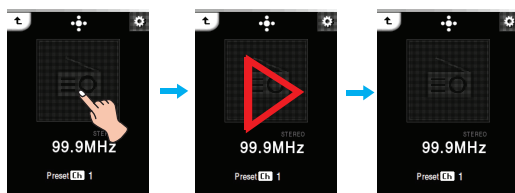
Press and move to the right downward direction to return to the home menu on the preset mode.

## Mute the sound

1 Press the middle part of LCD while listening to the radio.



2 Press the middle part of LCD again to listen to the radio.



## Using the control box

1 Press while listening to the radio.

- The control box appears on LCD.
- If the control box does not appear on LCD, adjust the control box. [Ez menu] ⇒ [Control Box] ⇒ [On] (Page 40)

2 Press to set muting.

- The appears on LCD.

3 Press to listen to the radio.

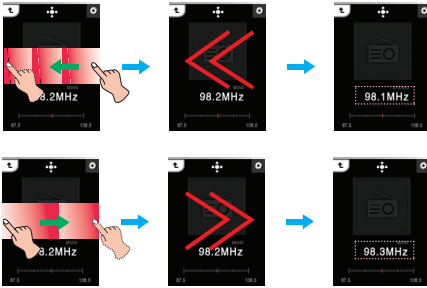
4 Press or other space to remove the control box.

## To search the FM radio stations

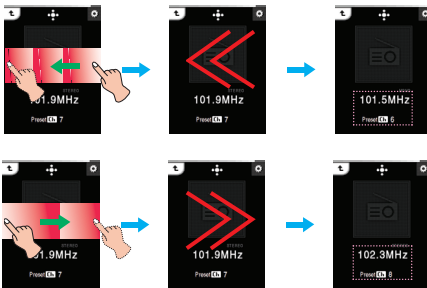
### Manual Search

Drag the middle part of LCD in the direction of the left/right while listening to the radio.

**Non-Preset Mode** (Decreases/increases step by step.)



**Preset Mode** (Decreases/increases channel by channel.)

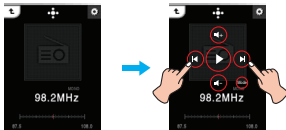


### Using the control box

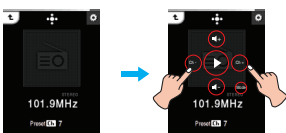
1 Press **+** while listening to the radio.

- The control box appears on LCD.
- Press **⏸** on LCD until the **⏪** and **⏩** appear on Non-Preset Mode.
- Press **⏸** on LCD until the **⏴** and **⏵** appear on Preset Mode.

**Non-Preset Mode**

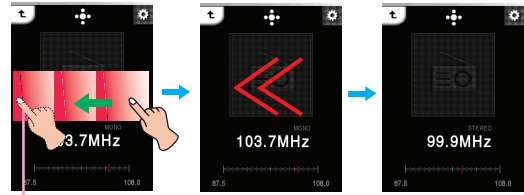


**Preset Mode**

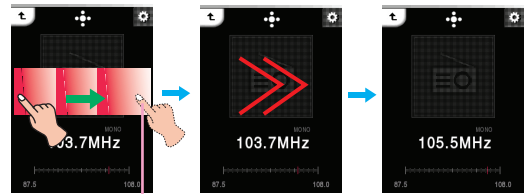


### Automatic Search

Drag the middle part of LCD in the direction of the left/right during reception and then press and hold the LCD.



Press the LCD for about 2 seconds.

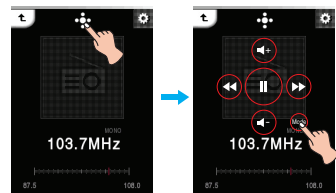


Press the LCD for about 2 seconds.

### Using the control box

1 Press **+** while listening to the radio.

- The control box appears on LCD.
- Press **⏸** on LCD until the **⏪** and **⏩** appear on LCD.



2 Press **⏪**, **⏩**.

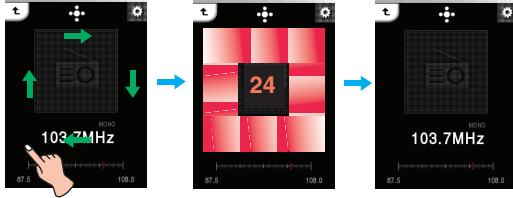
- If you press **⏸** during automatic search, it is canceled.
- Reception may be weak in some areas.
- As earphones function as antennas, only LG Electronics' earphones guarantees the reception quality.

# Listening to the FM radio (Option by models)

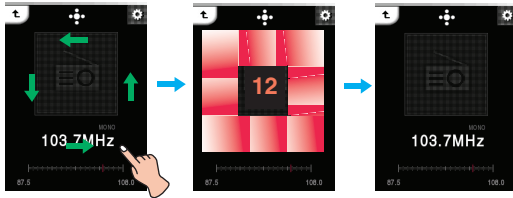
## Volume control

Keep pressing and turn the point you press on LCD clockwise/counterclockwise while listening to the radio.

### Volume up

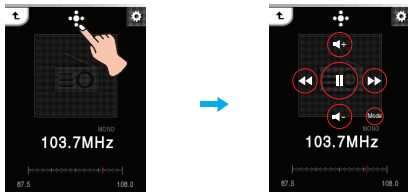


### Volume down



## Using the control box

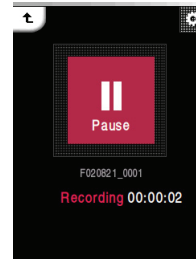
- 1 Press **[+]** during while listening to the radio.
  - The control box appears on LCD.



- 2 Press the **[V-]** or **[V+]** button to control the volume.

## To record FM radio broadcasting

- 1 To record while listening to the radio, press REC button more than 1 second.
  - The recording time will be displayed and the recording will start.



- 2 Press [Pause] to pause.
- 3 Press [END] to end the recording.
  - Select [Continue] to resume recording.
  - The recorded files will be stored under Record folder named F061205\_xxxx (Year Month Date\_Order)
- 4 Refer to [Recorded file] on page 25 to play prerecorded files.

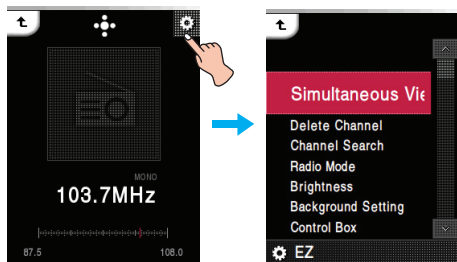
### Note

If the remaining memory space is less than 4MB, the player may not be recorded.

## EZ menu of the Radio


You can set the desired function or switch to other modes using the EZ menu.

Press  to select the EZ menu while listening to the radio.




## Simultaneous View

• **Photo** : You can view the photo while listening to the radio simultaneously.

[Photo] ⇔  (Moving to EZ menu of the photo) ⇔ [Radio] ⇔ [Cancel]/[Previous Channel]/[Next Channel]/[Back]

- [Cancel] : Stops the radio reception.
- [Previous Channel] : Receives the previous channel.
- [Next Channel] : Receives the next channel.
- [Back] : Moves to the radio mode.

• **Text** : You can view the text while listening to the radio simultaneously.

[Text] ⇔  (Moving to EZ menu of the text) ⇔ [Radio] ⇔ [Cancel]/[Previous Channel]/[Next Channel]/[Back]

- [Cancel] : Stops the radio reception.
- [Previous Channel] : Receives the previous channel.
- [Next Channel] : Receives the next channel.
- [Back] : Moves to the radio mode.

## Delete Channel/Save Channel

Deletes or stores a radio channel.

## Channel Search

You can store the FM radio channel automatically.

- The previous memorized channel will deleted.
- Press [Cancel] to stop while searching the channel.

## Radio Mode

You can select the channel mode or frequency mode.

### • Preset Mode

You can set the FM radio broadcasting to channel mode.

### • Non-Preset Mode

You can set the FM radio broadcasting to frequency mode.

## Brightness

You can adjust the brightness level from 0 to 9. The default brightness is 5.

## Background Setting

You can select the photo file to background while listening to the radio.

### • User Image

Displays the user's photo during playback.

### • Default Image

Displays the basic photo during playback.

## Control Box

You can select the control box.

- **On** : Displays the control box.
- **Off** : Cancels the display of control box.


## View Information

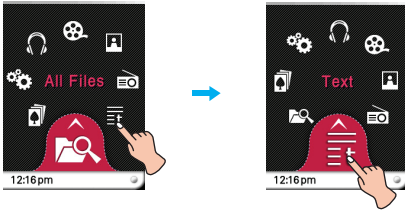
Displays the information of the receiving radio. (Frequency, Reserved REC Interval, Reserved REC Time, Reserved frequency, Setting)



# Viewing text

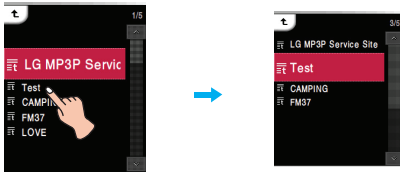
## To view the text file

1 Select  of the home menu.



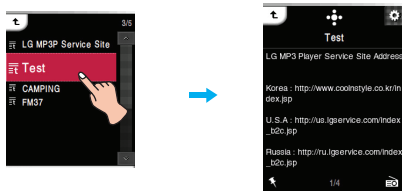
2 Select the desired list.

- The list is displayed on LCD.
- If there is no list, "No file" appears on LCD.



3 Press the desired file.

- The text file appears on LCD.

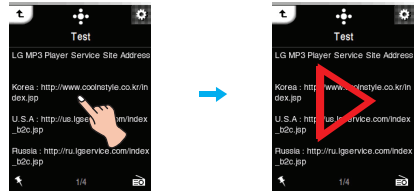


### Note

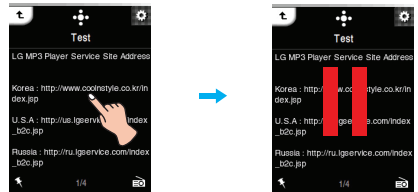
The player supports maximum 99999 pages.

## To skip the page automatically

1 Press the middle part of LCD when a text file is displayed.



2 Press the middle part of LCD again to pause.



## Using the control box

1 Press  while viewing the text.

- The control box appears on LCD.
- If the control box does not appear on LCD, adjust the control box. [Ez menu] ⇌ [Control Box] ⇌ [On] (Page 43)




2 Press  to skip the page automatically.

- The  appears on LCD.

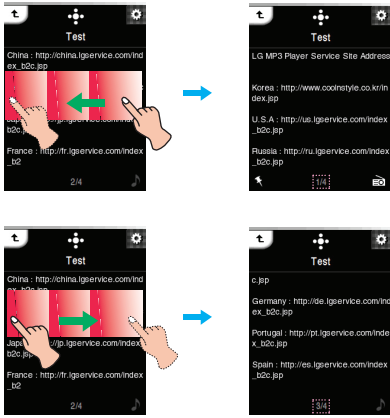
3 Press  to pause.

- The  appears on LCD.

4 Press  or other space to remove the control box.

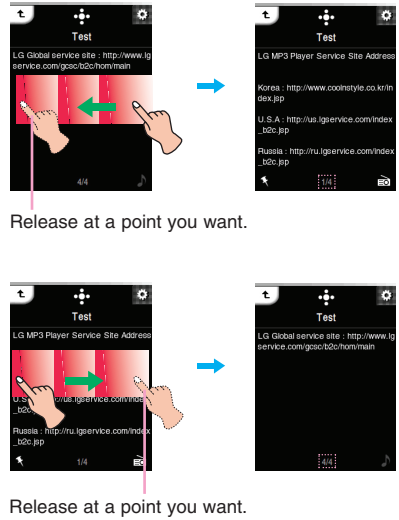
## To view the previous or next page

Drag the middle part of LCD in the direction of the left/right during playback.



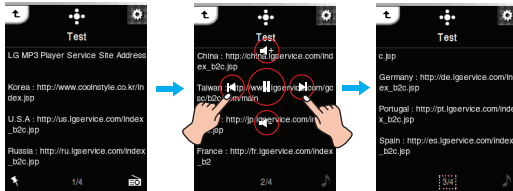
## Speed search

Drag the LCD during playback and then press and hold the LCD.



## Using the control box

- 1 Press during playback.
  - The control box appears on LCD.



- 2 Press to view the previous or next page.


## Using the control box

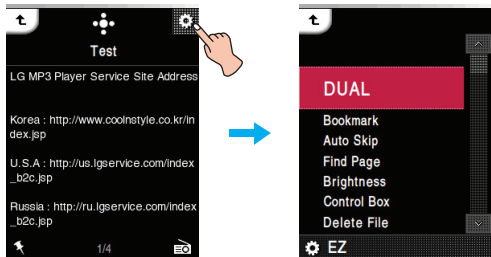
- 1 Press during playback.
  - The control box appears on LCD.
- 2 Press and hold for two seconds during playback. And then release at a point you want.

# Viewing text

## EZ menu of the Text


You can set the desired function or switch to other modes using the EZ menu.

Press  to select the EZ menu while viewing the text.




## DUAL

• **Music** : You can listen to music while viewing the text simultaneously.

[Music] ⇔  (Moving to EZ menu of the text) ⇔ [Music] ⇔ [Cancel]/[Play Previous]/[Play Next]/[Back]

- [Cancel] : Stops the music playback.
- [Play Previous] : Plays the previous music.
- [Play Next] : Plays the next music.
- [Back] : Moves to the music mode.

• **Radio** : You can listen to the radio while viewing the text simultaneously.

[Radio] ⇔  (Moving to EZ menu of the text) ⇔ [Radio] ⇔ [Cancel]/[Previous Channel]/[Next Channel]/[Back]

- [Cancel] : Stops the radio reception.
- [Previous Channel] : Receives the previous channel.
- [Next Channel] : Receives the next channel.
- [Back] : Moves to the radio mode.

## Bookmark

You can move to the point you set while playing the text.

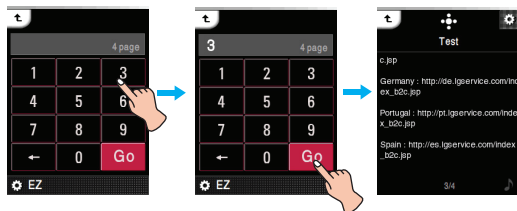
- **Set**  
Sets the bookmark.
- **Move**  
Executes the bookmark.
- **Cancel**  
Cancels the bookmark.

## Auto Skip

Sets an interval for auto text skipping.  
You can select [Off], [3 sec], [5 sec], or [10 sec].

## Find Page

You can move to the desired page.



## Brightness

You can adjust the brightness level from 0 to 9.  
The default brightness is 5.

## Control box

You can select the control box.

- **On** : Displays the control box.
- **Off** : Cancels the display of control box.

## Delete File


- **Yes** : Deletes the playing file.
- **No** : Cancels the deleting of playing file.

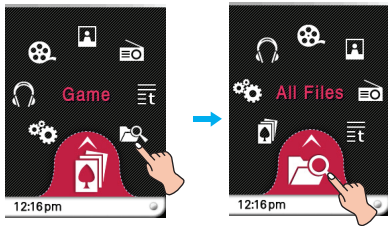
## View Information

Displays the information of the playing file.  
(File Name, File Size, Page, Setting)

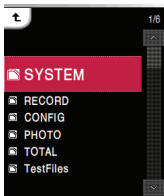
# Checking up all files/ Playing a game

## All Files

1 Select  of the home menu.



2 You can confirm and play the playable list on each mode.



### SYSTEM

Displays the files that are connected with system.

### RECORD

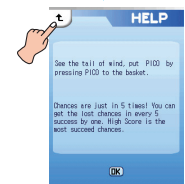
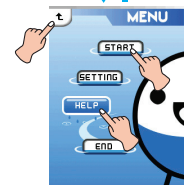
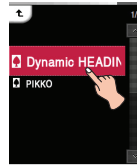
Displays the prerecorded files.

### CONFIG

Displays the files that are connected with configuration.

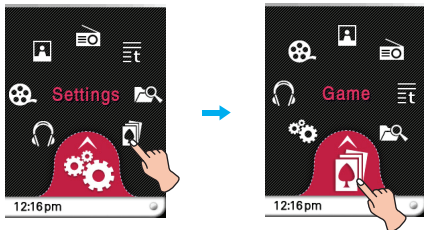
2 Press the desired game file.

- For details, see the [HELP] menu.



## Game

1 Select the  icon of the home menu.



### [Dynamic HEADING] game

Heading for both side of balls that mission will be succeed.

Do not pile up the over 5 balls in given time.

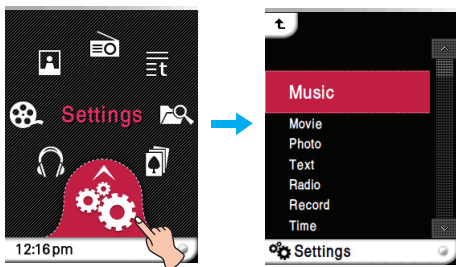
Many kinds of items will appear.

### [PIKKO] game

See the tail of wind, put PIKKO by pressing PIKKO the basket.

Chances are just 5 times! You can get the lost chances in every 5 success by one. High Score is the most succeed chances.

## Settings



## Music

## Play Mode

- Repeat One  
Plays the current file repeatedly.
- Play All  
Plays all music within the selected folder in order.
- Repeat All  
Plays all music within the selected folder repeatedly.
- Random All  
Plays all music within the selected folder randomly.
- Random Repeat All  
Repeats all music within the selected folder randomly.

## Music Speed

You can set the playing speed of MP3 files.

- You can select [0.3 times], [0.5 times], [1 time], [1.5 times], and [2 times].
- The default value is [1 time].
- MP3 files sampled at less than 32KHz can support only [1 time].

## Sound Effect

- EQ: You can set the sound effect.  
(AUTO EQ, NORMAL, POP, ROCK, R&B/SOUL, HIPHOP/RAP, JAZZ, CLASSICAL, DANCE, LIVE, USER EQ)
- 3D Sound: You can experience 3D sound effects.  
(Off, 3D EXPANDER, STADIUM, CONCERT HALL, CLUB, ROOM, BASS BOOST, X-LIVE)

## Fade In

- You can gradually increase the volume to protect ears.
- You can select [On] or [Off].

## Scroll Speed

Sets the speed of the file name and ID3 tag information in the music playing mode.

- You can select [Off], [0.5 times], [1 time], [2 times], and [3 times].

## Search Interval

You can select the slide show interval.

- You can select [3 sec], [5 sec], [10 sec], or [30 sec].

## Lyrics

You can show the lyrics if a music file supports the lyrics.

- On : Sets the lyrics view.
- Off : Cancels the setting of lyrics view.

## Background Setting

You can select a photo file for music background.

- Album Art : Displays the album jacket during playback.
- User Image : Displays the user's photo during playback.
- Default Image : Displays the basic photo during playback.

## Movie

## Search Speed

You can set the playing speed of movies files.

- 1 time : Searches at an original speed.
- 2 times : Searches at 2 times speed.
- 3 times : Searches at 3 times speed.

## MXD Engine Effect

You can show a high-definition image of movie files.

- You can select [On] or [Off].

## Photo

## Slide show

You can set the slide show to On/Off.

- On : Turns on the slide show.
- Off: Turns off the slide show.

## Slide Interval

You can set the slide show interval to [2 sec], [3 sec], [4 sec], or [5 sec].

## Text

## Font Color

You can set the character color in the text mode.

- You can select [White], [Gray], [Green], [Blue], [Yellow], or [Red].

## Auto Skip

Sets an interval for auto text skipping.

- You can select [Off], [3 sec], [5 sec], or [10 sec].



# Setup menu

## Settings

### Radio

#### Mode

You can set the reception mode.

- You can select [Auto], [Stereo] or [Mono].

#### Sensitivity Setting

The lower, the more frequency channels.

- You can select [High], [Standard], or [Low].

#### Region Setting

You can set the reception area.

- You can select [Korea], [Japan] or [Others].

#### Reserved Recording

You can reserve the FM radio recording.

- You can set the frequency for reserved recording.
- Reserved recording feature is activated only when MP3 player is turned off.
- You can set only one reserved recording.
- Recording can be made for maximum 23 hours and 59 minutes.

#### Background Setting

You can select the photo file to background while listening to the radio.

- User Image  
Displays the user's photo during playback.
- Default Image  
Displays the basic photo during playback.

## Record

### Recording Quality

You can set the quality of the recorded file.

- You can set [96kbps], [128kbps], or [192kbps].

### VAD

In case of voice recording, recording will automatically stop upon mute sound and will resume upon reception of the voice signal.

- You can select [On] or [Off].

## Time

### Sleep Reservation

When the defined time passes, MP3 player will be automatically turned off.

- You can select [Off], [10 min], [30 min], [1 hr], or [2 hr].
- If you set the turning-off reservation, MP3 player will automatically store files and be turned off at the reserved time.
- After MP3 player is turned off at the reserved time, the turning-off reservation will be automatically cancelled.

### Time System

You can set the current time in 12/24 hour time system.

### Time Setting

You can set the current time.

- You can set years between 2001 and 2099.
- When downloading files in MTP mode, the time setting of MP3 player will be synchronized with the one of the PC.

## Display Setting

### Brightness

You can adjust the brightness level from 0 to 9.

The default brightness is 5.

### Theme Setting

Sets menu type.

- You can select [Icon type] or [List type].

### Menu Color

You can set the color of the home menu to [Red]/[Blue].

## General

### Control Box

You can select the control box.

- On : Displays the control box.
- Off : Cancels the display of control box.

### Rebuilding

You can search the downloaded files and upgrade the list.

- You can select [Yes] or [No].
- If you select [Yes], the list will be upgraded. If you select [No], MP3 player will return to the general setting screen.
- As updating the list may take time, check the battery status in advance.

### Initialize Settings

You can initialize the setting of MP3 player.

- You can select [Yes] or [No].
- If you select [Yes], MP3 player is automatically turned off after MP3 player is initialized.
- If you select [No], MP3 player moves to the previous menu.

## Setting

### System Info

You can check the product information.

- The entire memory space, the used memory space, remaining memory space, the model name and firmware version are displayed.

### Language

You can select the language.

- Korean, English, Portuguese, Russian, Danish, German, Dutch, French, Hungarian, Italian, Norwegian, Polish, Spanish, Swedish, Thai, Chinese (Traditional), Ukrainian, Finnish

### Power Management

#### • Auto Display Off

If no button is inputted during the given time, the LCD will be automatically turned off.

- You can select [Off], [5 sec], [10 sec], [30 sec], or [60 sec].

#### • Auto Power Off

If no button in selected in the standby mode for playing, the screen will be automatically turned off.

- You can select [Off], [30 sec], [1 min], [5 min], or [10 min].

### PC Connection Setting

#### • Media Device(MTP) Mode

- The MTP applies the latest technology of Microsoft to support the multimedia devices. It is recognized as a mobile devices and compatible with Windows Media Player10.

#### • Removable Disk(MSC) Mode

- MP3 player will function as a general removable storage in this mode.

### Format

You can delete all data in the memory and initialize the memory.

- You can select [Yes] or [No].
- If you select [Yes], formatting will be made. If you selects [No], MP3 player will return to the general setup screen.
- Back up the data stored in MP3 player before initializing it.
- Deleted data cannot be recovered.

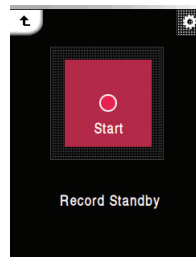
### Calibration

You can adjust a focus on LCD.

- Press "+" repeatedly.

## Voice recording

- 1 Press the REC more than 1 second and then press [Start].



- The recording will start.

- 2 Press [Pause] to pause.

- 3 Press [END] to end the recording.

- Select [Continue] to resume recording.

- The recorded files will be stored under Record folder named V061205\_xxxx (Year Month Date\_Order)

- 4 Refer to [Recorded file] on the page 25 to play prerecorded files.

### Note

If the remaining memory space is less than 4MB, the player may not be recorded.

**Q : MP3 player will not be turned on.**

- A : Check whether the battery is remaining.  
A : Connect the AC adapter and charge the battery.

**Q : The screen is blur.**

- A : Avoid direct sun rays and adjust the brightness.  
A : Check the LCD brightness.

**Q : The button does not function.**

- A : Check whether the Hold feature is active.

**Q : The characters on display look broken.**

- A : Download the font file from the website and copy it to the Config folder.  
A : The Config folder is displayed only in MSC mode. Change to the MSC mode (In case of MTP mode, copy the font file to the data folder).

**Q : The noise is severe during listening to the radio, and the reception is poor. (FM radio reception is optional.)**

- A : The earphone functions as an antenna. Be sure to handle carefully.  
A : Slightly change the directions of MP3 player and the earphones.

**Q : After the files are downloaded, the play list will not show the newly added files.**

- A : Upgrade the list in Setup menu.  
A : Format the product and download the file.  
- If you format MP3 player, all data in it will get lost.

**Q : After the firmware is upgraded, MP3 player is not normally functioning.**

- A : Reset the product (See page 20)  
A : Back up the data and format MP3 player.  
- If you format MP3 player, all data in it will get lost.

**Q : Sometimes, files are not downloaded.**

- A : Check the PC Connection Setting of MP3 player. (See page 14 - 16.)

**Q : Files can not downloaded.**

- A : Check the PC Connection Setting. Some files can be downloaded depending on the PC Connection Setting. All files can be downloaded in MSC mode.

**Q : The PC can not recognize an MP3 Player.**

- A : Check the PC Connection Setting. In the case of Windows 98 SE/ME, PC Connection Setting should be set to MSC in Setup Menu.  
A : Check if the USB driver on the provided CD is installed.

**Q : AVI/WMV file will not play.**

- A : Only video files transcoded by LG Media Center can be played. Make sure the files to be played are converted by LG Media Center. Refer to the LG Media Center [Help] on how to transcode your files.

**Q : Characters are not shown properly in text files.**

- A : If the text file is encoded in a format that your text file viewer doesn't understand, text data seem to be garbaged or corrupted.  
A : You should convert the text file into Unicode on a PC which supports your language of choice and download it.  
A : Set the characters to the corresponding languages in [Settings] ⇒ [General] ⇒ [Language].

**Q : ID3 TAGs of the music are broken or are not displayed.**

- A : Set the ID3 TAGs to the corresponding languages in [Settings] ⇒ [General] ⇒ [Language].



# Specifications

| Type                                      | Item                     | Specifications  |
|---|--------------------------|---|
| Memory                                    | Capacity                 | 1GB/2GB/4GB   |
|   | File system              | FAT32   |
| PC  | OS for MP3 Player Device | Win98SE/ME/2000/XP  |
|   | OS for LG Media Center   | Win2000 / XP  |
|   | Interface                | USB 2.0   |
| General specifications                    | Dimensions               | 51.5 (W) X 90 (H) X 9.9 (D)                                 |
|   | Weight                   | 63g (2.22oz) (with battery) / Depends on the product model. |
|   | Operating temperature    | 0°C + 40°C  |
| Audio                                     | Frequency range          | 20Hz ~ 20kHz  |
|   | Signal-to-noise ratio    | 90dB  |
|   | Channel response         | 40dB (1kHz)   |
|   | Maximum output           | 18mW+18mW   |
| FM radio<br>(Optional according to model) | Frequency range          | 87.5~108MHz   |
|   | Signal-to-noise ratio    | 38dB  |
|   | Channel response         | 22dB (1kHz)   |
|   | Antenna                  | Earphones antenna   |
| Playback time                             | Video                    | About 3 hours   |
|   | Audio                    | About 20 hours (for 128Kbps/44.1KHz EQ normal)              |
| Power supply                              | AC adapter               | DC5V, 1A  |
|   | Battery (Built-in)       | Lithium Ion DC 3.7V 600 mAh Chargeable Battery              |
| Files                                     | Audio                    | MP3, OGG, WMA, WAV (ADPCM), ASF                             |
|   | Video                    | LG AVI (30 frames), LG WMV (30 frames)                      |
|   | Image viewer             | JPG   |
|   | Text viewer              | TXT   |
| Display                                   | TFT LCD                  | 2.4" / 260,000 colors                                       |

## Note

Some parts of the storage space of the MP3 player are usually used for storing the information that is internally treated. Therefore, the storage capacity that can be actually used may be somewhat smaller than specified in the manual. (The size of the storage space for the internally treated information can be changed for product upgrade without any notice to the end users.)

<http://www.lge.com>

Information related to the product is available at this site.

- By updating the firmware, you can improve the performance of the product.



# Specifications

## Supported file specification

### MP3 Decoder

- MP3 decoding support specification including variable bit rate (VBR)

| Bitrate | Mpeg1 |         |       |
|---------|-------|---------|-------|
|         | 32KHz | 44.1KHz | 48KHz |
| 32      | OK    | OK      | OK    |
| 40      | OK    | OK      | OK    |
| 48      | OK    | OK      | OK    |
| 56      | OK    | OK      | OK    |
| 64      | OK    | OK      | OK    |
| 80      | OK    | OK      | OK    |
| 96      | OK    | OK      | OK    |
| 112     | OK    | OK      | OK    |
| 128     | OK    | OK      | OK    |
| 144     | OK    | OK      | OK    |
| 160     | OK    | OK      | OK    |
| 192     | OK    | OK      | OK    |
| 224     | OK    | OK      | OK    |
| 256     | OK    | OK      | OK    |
| 320     | OK    | OK      | OK    |

### MP3 Encoder

- 44.1KHz, (96Kbps, 128Kbps, 192Kbps) Spec

### WMA Decoder

- WMA (ASF-audio only) Decode Support

| kbps | KHz   | 48 | 44.1    | 32    | 22.05   | 16    | 11.025 | 8     |
|------|-------|----|---------|-------|---------|-------|--------|-------|
| 384  |       |    |         | O (S) |         |       |        |       |
| 320  | O (S) |    | O (S)   |       |         |       |        |       |
| 256  | O (S) |    | O (S)   |       |         |       |        |       |
| 192  | O (S) |    | O (S)   |       |         |       |        |       |
| 160  | O (S) |    | O (S)   |       |         |       |        |       |
| 128  | O (S) |    |         |       |         |       |        |       |
| 96   | O (S) |    |         |       |         |       |        |       |
| 80   | O (S) |    |         |       |         |       |        |       |
| 64   | O (S) |    |         |       |         |       |        |       |
| 48   | O (S) |    | O (S,M) |       |         |       |        |       |
| 40   |       |    |         | O (S) |         |       |        |       |
| 32   | O (M) |    | O (S)   | O (S) |         |       |        | O (M) |
| 22   |       |    |         | O (S) |         |       |        |       |
| 20   |       |    |         | O (M) | O (S,M) | O (S) |        |       |
| 16   |       |    | O (M)   | O (M) | O (S,M) |       |        |       |
| 12   |       |    |         |       | O (M)   |       |        | O (S) |
| 10   |       |    |         |       |         | O (M) | O (M)  |       |
| 8    |       |    |         |       |         |       | O (M)  | O (M) |
| 6    |       |    |         |       |         |       |        | O (M) |
| 5    |       |    |         |       |         |       |        | O (M) |

- (S): Stereo, (M): Mono

### OGG Decoder

- Q(-1) ~ Q(9) Support

### ADPCM Decoder

- WAV File Format (MS-ADPCM) Decode

