



## **Touch DVB T80**

**OWNER'S MANUAL**

**MODEL: T80**

**Please read this manual carefully before operating your set.  
Retain it for future reference.**

**Designs and specifications are subject to change without notice for improvement.**





# IMPORTANT SAFETY INSTRUCTIONS



## CAUTION

RISK OF ELECTRIC SHOCK  
DO NOT OPEN



**CAUTION:** TO REDUCE THE RISK OF ELECTRIC SHOCK DO NOT REMOVE COVER (OR BACK) NO USER-SERVICEABLE PARTS INSIDE REFER SERVICING TO QUALIFIED SERVICE PERSONNEL.

## Warning

- To reduce the risk of fire or electric shock, do not expose this appliance to rain or moisture.

## Caution

- The appliance is not intended for use by young children or infirm persons without supervision.
- Young Children should be supervised to ensure that they do not play appliance.
- Use of controls or adjustments or performance of procedures other than those specified herein may result in hazardous radiation exposure.

## Disposal of your old appliance



1. When this crossed-out wheeled bin symbol is attached to a product it means the product is covered by the European Directive 2002/96/EC.
2. All electrical and electronic products should be disposed of separately from the municipal waste stream via designated collection facilities appointed by the government or the local authorities.
3. The correct disposal of your old appliance will help prevent potential negative consequences for the environment and human health.
4. For more detailed information about disposal of your old appliance, please contact your city office, waste disposal service or the shop where you purchased the product.
  - The lithium battery contains lithium and can explode if it is not properly handled or disposed of.
  - Replace only with a battery of the type recommended by LG.
  - Caution: Danger of explosion if battery is incorrectly replaced. Replace only the rechargeable lithium battery with Amperex Technology Ltd. or LG, Part No.(LGEIP-A1100E) having the cell, 553450. Use of Another Cell May Present a Risk of Fire or Explosion.



This product is manufactured to comply with the EMC DIRECTIVE 2004/108/EC and Low voltage Directive 2006/95/EC.

European representative :  
LG Electronics Service Europe B.V. Veluwezoom 15,  
1327 AE Almere, The Netherlands  
(Tel : +31-036-547-8940)



# Table of Contents

<b>Safety tips</b> .....	4	<b>Viewing photo</b> .....	30-33
<b>General information of MP3 player</b> .....	5	Photo viewing screen .....	30
<b>Name of each component</b> .....	6	Viewing photo files .....	30
<b>Installing software</b> .....	7-8	Enlarging/Reducing the photo size .....	30
Before installing the operating program .....	7	Setting the slide show .....	31
About LG Media Center .....	7	Viewing the previous or next file .....	31
Installing LG Media Center .....	7-8	Viewing photos while listening to music/radio .....	31
Installation of the Adobe Acrobat Reader .....	8	Volume control .....	32
View the manual .....	8	EZ menu .....	33
<b>Connecting to the PC</b> .....	9-12	<b>Listening to the FM radio (Optional)</b> . . .	34-36
To connect the USB cable .....	9	FM radio reception screen .....	34
To disconnect the USB cable .....	9	Setting preset channels .....	34
To download files-MTP mode .....	10-11	Listening to the FM radio .....	34
To download files - MSC mode .....	11	Muting sound .....	34
To download files-LG Media Center .....	12	Searching the FM the radio stations .....	35
<b>Converting video files</b> .....	13	Volume control .....	36
<b>Charging the MP3 player</b> .....	14	EZ menu .....	36
<b>Basic operation</b> .....	15-16	<b>Viewing text</b> .....	37-40
Turning on/off the power .....	15	Text viewing screen .....	37
Lock feature .....	15	Viewing text files .....	37
Reset feature .....	15	Enlarging/Reducing the text display size .....	37
Changing battery .....	15	Viewing the previous or next page .....	38
Home menu screen .....	16	Skipping pages automatically .....	38
General operations of Home menu .....	16	Speed search .....	38
<b>Playing music</b> .....	17-20	Viewing texts while listening to music/radio .....	39
Music playing screen .....	17	Volume control .....	39
Music menu .....	17	EZ menu .....	40
Playing music files .....	18	<b>Recording</b> .....	41
Pausing .....	18	Recording screen .....	41
Playing the previous or next file .....	18	How to record .....	41
Speed search .....	19	EZ menu .....	41
Playing from a specific point .....	19	<b>Checking up all files</b> .....	42
Volume control .....	19	<b>Playing games</b> .....	42
EZ menu .....	20	<b>Advanced setting</b> .....	43-44
<b>Playing movie</b> .....	21-24	Music .....	43
Movie playing screen .....	21	Movie .....	43
Playing movie files .....	21	DVB-T .....	43
Pausing .....	22	Photo .....	43
Playing the previous or next file .....	22	Text .....	43
Speed search .....	23	Radio .....	43
Playing from a specific point .....	23	Record .....	44
A-B section repeat .....	23	Time .....	44
Volume control .....	24	Display setting .....	44
EZ menu .....	24	General .....	44
<b>Enjoying DVB-T</b> .....	25-29	<b>Additional information</b> .....	45
DVB-T broadcasting screen .....	25	Upgrading firmware automatically .....	45
Entering the DVB-T mode .....	25	Upgrading firmware manually .....	45
Viewing the channel list for TV/Radio .....	26	<b>Troubleshooting</b> .....	46
Moving to the previous/next channel .....	26	<b>Error code</b> .....	47
Capturing the screen display .....	27	<b>Specifications</b> .....	48-49
Muting sound .....	27	Supported file specification .....	49
Volume control .....	27		
EZ menu .....	27-29		



# Safety tips

Please follow the safety tips closely to reduce the risk of accidents or damage to equipment. Safety instructions are divided into Warning and Caution. Keep this manual in an easily accessible place.



**Warning** Not following the safety tips may result in death or serious injury.



## Warning



Do not use this product while driving.



Do not operate the Player near water, dust, or soot.



Do not use the Player and connect with the cable or AC adapter when the rain is pouring down and thunderstorms produce lightning.



Listening to the music loud for a long time may compromise your hearing ability.

Do not use earphones while riding bicycles and motor cycles or driving a car.

Check the volume before using a headphone. If headphones are used at high volume for more than 30 minutes, it may result in noise induced hearing damage.

Do not use the earphones loud while walking, especially on the crosswalks.

Stop using earphones or lower the volume when you have ringing in your ears.

Careful that headphones or earphones do not slip into the subway doors or automatic doors.



**Caution** Not following the safety tips may result in a light accident or damage.



## Caution



Do not drop an object or give shock on the product.



Do not place the player near a magnet or within the magnetic field.



Clean the Player with soft cloth.



Keep this product away from heat.



Do not insert a metallic object (coins or hair pins, etc.) or flammable objects in the product. Do not drop such objects on the product either.



Do not disassemble, repair, or remodel the product.



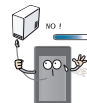
Note that the player may malfunction in an electrostatic environment.



Do not place an object on the product.



Back up important data. (Note that the manufacturer is not responsible for the loss of major data caused by the user's mistake.)



Do not disconnect the USB cable. Do not turn off the player while the USB cable is connected. Otherwise, the data may get lost.



# General information of MP3 player

## Features

### Portable Data Storage

Easy storage and transfer of any file type.

### USB 1.1 and 2.0

You can download files at a fast speed. (USB 2.0 high speed)

### LG 3D Sound

3D sound effects, low tones, and low frequency sound provide greater sound quality.

### Various background setting

Users can select a desired background image among various supported items or even create unique one to their likings.

### DVB-T

DVB-T (Digital Video Broadcasting – Terrestrial) is the DVB European consortium standard for the broadcast transmission of digital terrestrial television. You can enjoy high quality digital audio and digital video broadcasting simultaneously.

### Text Viewer

Convenient display of text files (.txt) for reading on the go.

### Wide 3.0" Color TFT LCD

Photos and video are reproduced in vivid detail on the highly portable 260,000 color TFT LCD.

### Touch screen

You can use the menus and functions of MP3 player by touching the LCD.

### FM Reception(Optional)

With auto frequency selection feature, you can conveniently listen to the FM radio broadcasting.

### Voice Recording

With the built-in microphone, you can record your voice and FM radio broadcasting anywhere.

### Photo Viewer

Store and display photos on the vivid display for entertaining slide shows.

### File Format Flexibility

- Music: MP3, OGG, WMA, WAV
- Video: LG AVI (The player can be only played the video files converted via LG Media Center.), WMV
- Photo: JPG, BMP
- Text: TXT

## Media Device(MTP) Mode / Removable Disk(MSC) Mode

### What is the Media Device(MTP) mode?

The MTP stands for the Media Transfer Protocol. It applies the latest technology defined by Microsoft to support multimedia devices.

- Windows XP / SP1 or higher OS, and Windows Media Player 10 or higher.
- To use the MSC mode, select the MSC mode in the PC Connection Setting menu.
- If the Windows OS does not support the MTP, the player will function in the MSC mode although the player is set in the MTP mode (Select the MSC mode for the USB in the setup menu for Windows 2000).

### What is the Removable Disk(MSC) mode?

The MSC stands for the Mass Storage Class. The device in MSC mode functions like a portable memory.

## Converting video file

MP3 player can be only played the video files converted via LG Media Center.

For details about conversion, see the Help menu [Converting video file] on LG Media Center.

## PC Connection Setting

### Media Device(MTP) Mode

You should download music files via LG Media Center or Windows Media Player 10 or higher.

You should download video, photo, and text files via LG Media Center. You can copy data files to the Data folder.

### Removable Disk(MSC) Mode

You can copy the Media file to the Removal Disc. (But you should download video files via LG Media Center.)

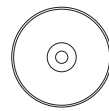
## Package contents



T80



USB cable



Software CD



Kernel type earphones

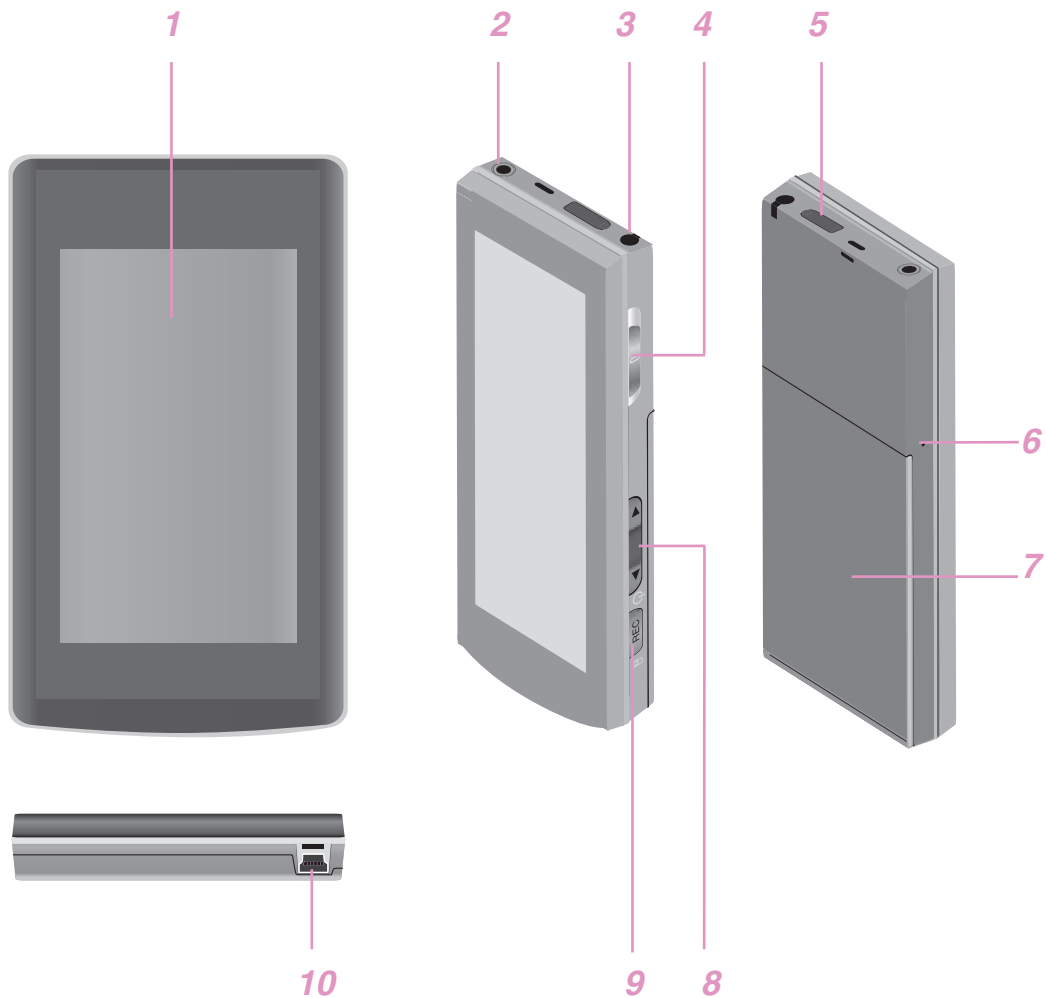


Quick Setup Guide

- The images inserted herein are examples to make users understand the more easily and may be little bit different from the real product.
- The contents of the product are subject to change without prior notice for functional improvement.
- Contact with one of call centers supplied with this manual to buy batteries.



## Name of each component



- 1 Display screen (\*Touch Screen)
- 2 Earphone jack
- 3 DVB-T antenna
- 4 • Power on/off  
• Hold switch (🔒)
- 5 External antenna jack(for DVB-T)

- 6 Microphone hole/RESET hole
- 7 Battery cover
- 8 Volume button
- 9 Record (REC) button
- 10 USB port

### \* Precautions in using the touch screen

- Do not tap on the touch screen with your fingers unclean or gloves on.
  - Otherwise, the selected function may not operate in any way. Use it with bare hands lightly.
- Do not press the touch screen hard to make it work.
  - If you apply too much strength, it can damage the sensor of the touch screen.
- Touch the point that you want to work in order to operate the function correctly.
- Do not touch the screen with sharp objects like pins, or it cause scratches on the screen.



# Installing software

## Before installing the operating program

Check the specifications of your PC before using the Player.

### Minimum system requirements

- CD-ROM Drive
- Pentium III or higher level CPU / 128MB or larger memory
- 300MB or larger hard disc space, 800 X 600 mode
- Hi-color (16 bit) or higher level video card, Sound card

### Operating environment

- The MTP mode is applied to the PC equipped with Windows XP (SP1) or higher-version OS or the Windows Media Player 10/11. To the lower-version OS, the MSC mode is applied.

### Windows Media Player 10/11

- You can download the file using Synchronize with Windows Media Player 10/11 menu.
- For more information, see the Help menu of Windows Media Player 10/11.

### LG Media Center

- Windows 2000/XP/Vista
- Windows Media Player 10/11/ Internet Explorer 6.0
- Windows Media Player or Internet Explorer will be automatically installed during installation of the LG Media Center. Internet connection must be connected in order to install Internet Explorer.

## About LG Media Center

The LG Media Center program is an integrated data management program developed for users to more conveniently use the MP3 player.

### Features of the LG Media Center

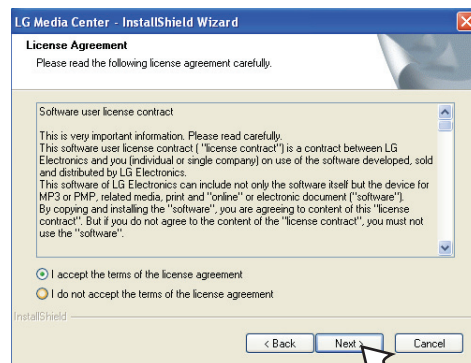
You can efficiently manage music, video, and photo files through the Media Library rule and download them to the MP3 player.

## Installing LG Media Center

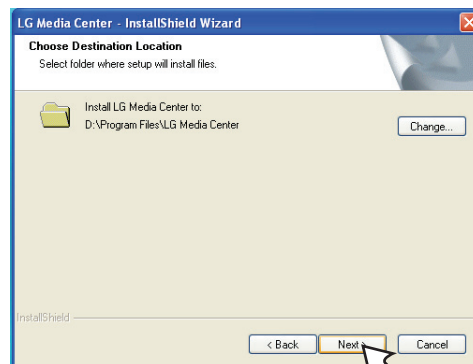
- 1 Insert the operation program CD into the CD-ROM.
- 2 Select [LG Media Center].



- 3 Read the License Agreement. Select the check box and click [Next].



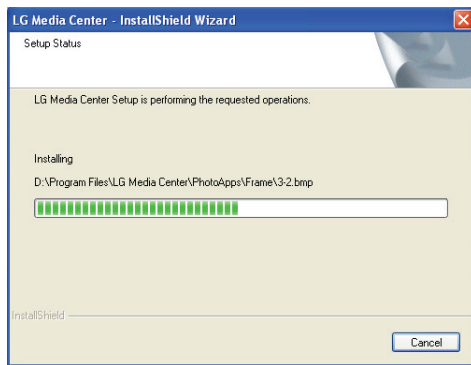
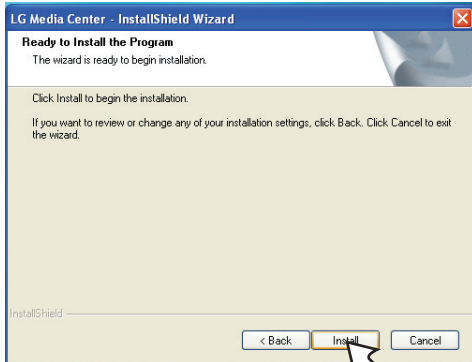
- 4 Select the installation path and click [Next].



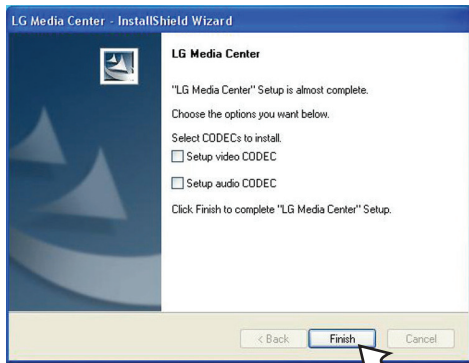


## Installing software

5 Click [Install] to start installation.



6 After finishing the installation, click [Finish].



- You can install CODEC if it is not installed on PC.

7 Click [Start] ⇒ [All Programs] ⇒ [LG Media Center] to start the program.

### Note

- During installation of the LG Media Center, you can install the Windows Media Player and the Internet Explorer for an operating environment.
- The pop up image may be different depending on the OS of PC.

## Installation of the Adobe Acrobat Reader

1 Insert the operation program CD into the CD-ROM.

2 Select [Adobe Acrobat Reader].



3 Follow the displayed instructions.

## View the manual

1 Insert the operation program CD into the CD-ROM.

2 Select [Manual].



3 You can see the manual.

### Note

You must install the Adobe Acrobat Reader to read the manual.

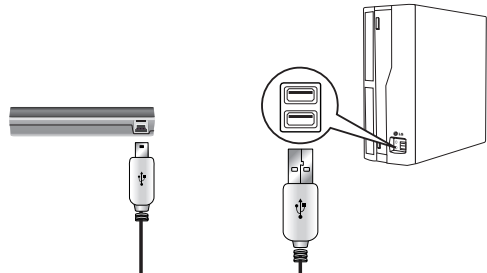




# Connecting to the PC

## To connect the USB cable

- 1 Connect one end of the USB cable to the USB port of the PC and the other to the USB port of the player.
  - Check whether both ends are correctly plugged in.



- 2 If the USB device is normally recognized after the cable is connected, the following will be displayed.
  - The software version is displayed on screen.



- 3 In case of a correct connection, an icon will be displayed on the task bar of the PC.
  - The icon shapes on the task bar may differ depending on the OS of the PC.

### Note

- In case you connect the device to PC with an extended usb cable or non-certified usb hub, it may not operate.

## To disconnect the USB Cable

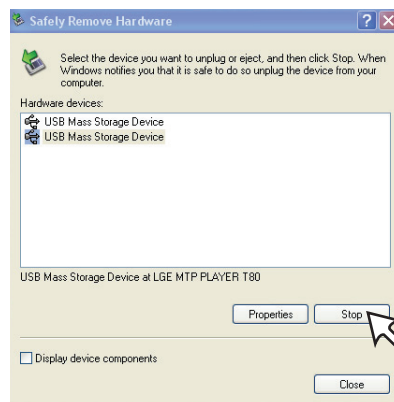
### Media Device(MTP) mode

Disconnect the USB cable from the PC after checking whether a file is transferring.  
If the file is transferring, disconnect it after the transfer is completed.

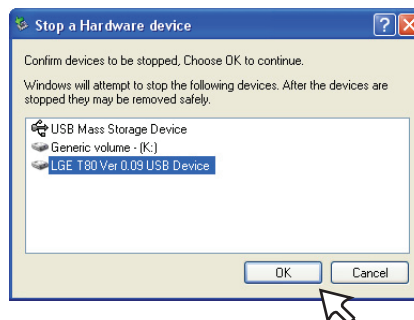
### Removable Disk(MSC) mode

This feature is to safely remove MP3 player from the PC after uploading or downloading the files.

- 1 Double-click on the Remove Hardware icon on the task bar of the PC.
- 2 Click [Stop] when the window appears.



- 3 Click [OK].



- 4 After a message that the large-capacity USB storage can be safely removed is displayed, remove MP3 player from the PC.
  - If the USB cable is disconnected while storing or deleting the file, the data may get lost.



# Connecting to the PC

## To download files - MTP mode

MP3 player will be recognized as a mobile device, not a mass storage, and will interwork with the Windows Media Player 10/11.

1 Connect one end of the USB cable to the USB port of the PC and the other to the USB port of MP3 player.

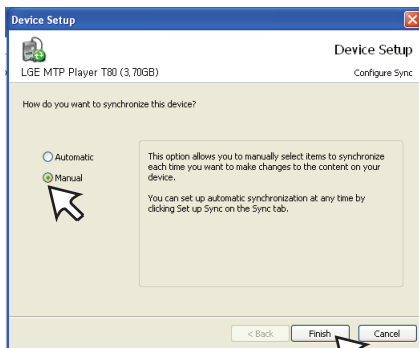
- Check whether both ends of the cable are correctly plugged in.

2 The window "MTP Media Player" appears in the PC.

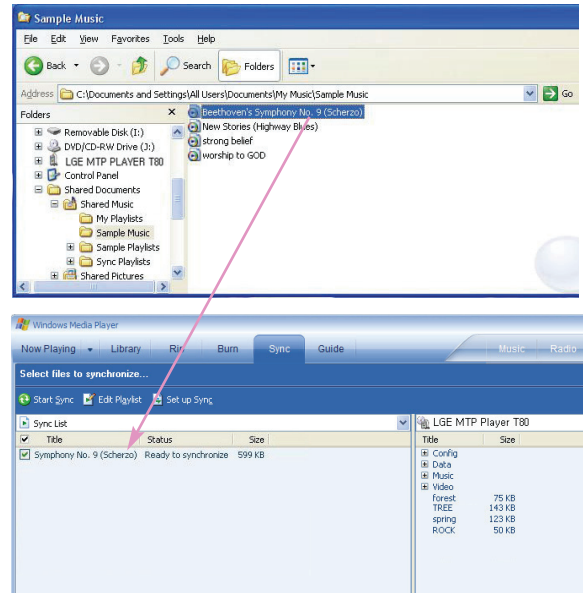
1) a. "Synchronize media files to this device" ⇒ "OK"



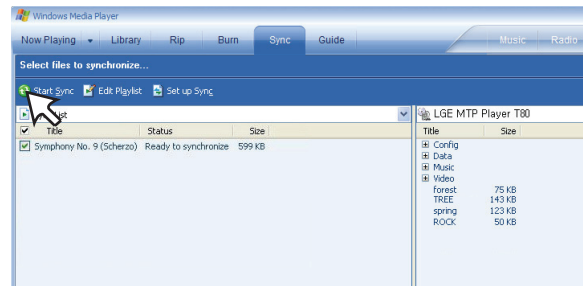
b. "Manual" ⇒ "Finish"



c. Drag the synchronizing files to the left window.



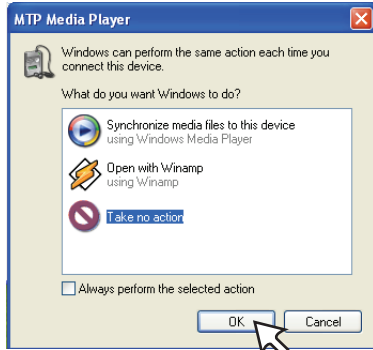
d. Click "Start Sync".



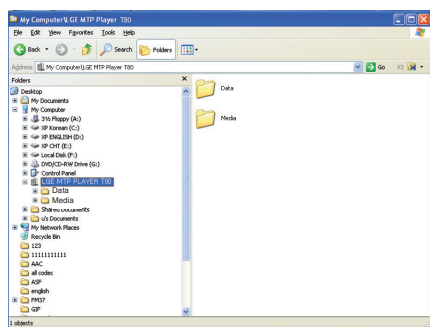


# Connecting to the PC

2) a. "Take no action" ⇒ "OK"

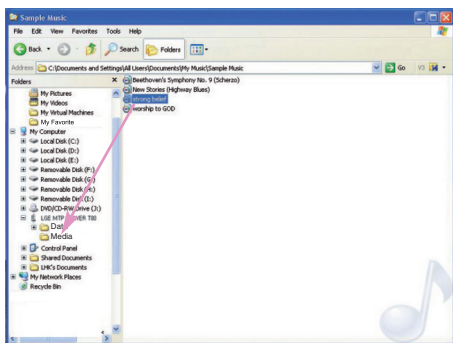


b. Click "LGE MTP Player T80".



- Data folder: You can download or upload all data files.
- Media folder: You can download only the file that Windows Media Player 10 supports.

3 Drag the file to copy to the portable media drive.

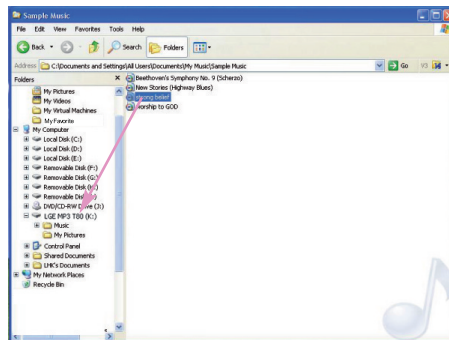


### Note

- When you cannot check the downloaded files on Media folder, download it to the Data folder again.
- When you connect the device with Windows Media Player 11 or higher version, you can download files directly to the Internal Storage. That is, lower folders below the device are not separated to Data and Media on Window Media Player 11 or higher.

## To download files - MSC mode

- 1 Check whether the device is connected through the MSC mode.
  - [Settings] of Home Menu ⇒ [General] ⇒ [PC Connection Setting] ⇒ Removable Disk (MSC)
- 2 Connect one end of the USB cable to the USB port of the PC and the other to the USB port of MP3 player.
  - Check whether both ends of the cable are correctly plugged in.
- 3 Check whether a new drive has been added in the Windows Explorer in the PC.
  - The drive name may differ depending on the OS.
- 4 Drag the file to copy to the removable disc drive.



- Disconnecting the USB cable while the file is being copied may cause malfunction of MP3 player.
- MP3 player will be charged when connected to the PC through the USB cable.
- Download video files from LG Media Center.
- Download the JANUS DRM-applied files through the Windows Media Player 10 or higher, or LG Media Center (MTP Mode only)
- Download X-Sync DRM-applied files through the LG Media Center.



## Connecting to the PC

### To download files - LG Media Center

You can download from MP3 player the files you want via LG Media Center.

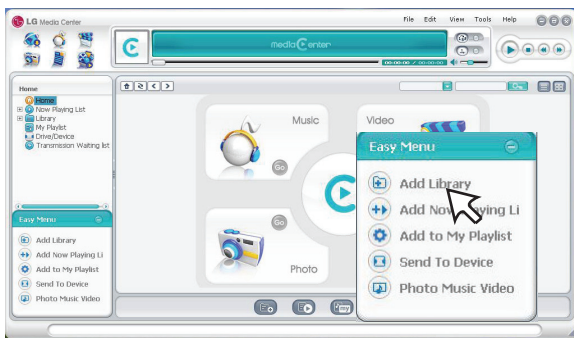
For details, see the Help menu on LG Media Center.

- You can check the downloaded files in the Music, Video, Photo, or Document folder.
- OGG files only are supported in MSC mode.

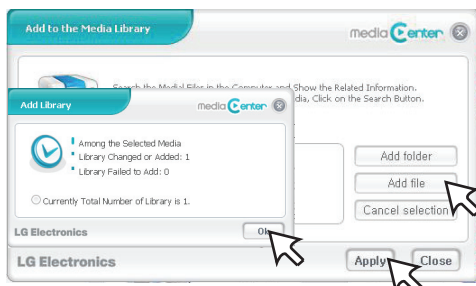
1 Connect one end of the USB cable to the USB port of the PC and the other to the USB port of MP3 player.

- Check whether both ends of the cable are correctly plugged in.

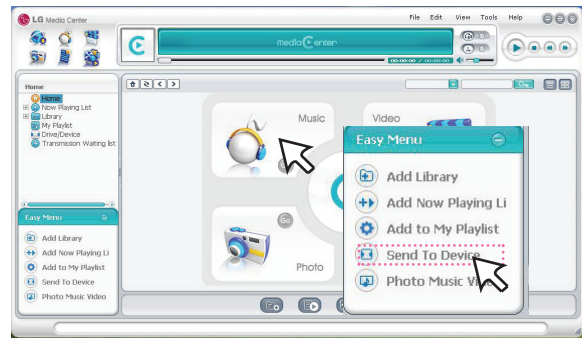
2 Execute the LG Media Center and then click [Add Library].



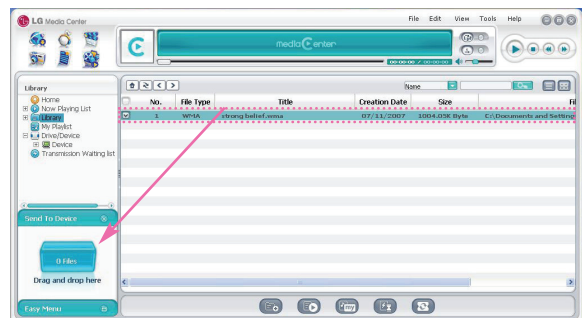
3 [Add file/folder] ⇒ Selecting the downing file (Ex: Music file) ⇒ [Apply] ⇒ [OK].




4 [Music] ⇒ [Send to Device]



5 Drag the files to the [Send to Device].



- Or press  on the bottom of the LG Media Center, you can send the file into the player.

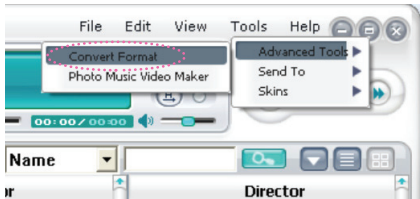


# Converting video files

MP3 player can only play the video files converted via LG Media Center.

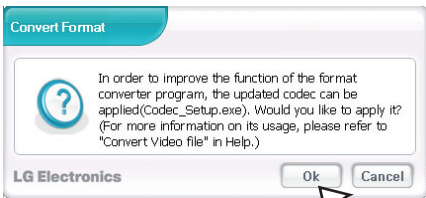
For details about conversion, see the Help menu [Converting video file] on LG Media Center.

- 1 Execute the LG Media Center.
- 2 Selecting [Tools] ⇒ [Advanced Tools] ⇒ [Convert Format].

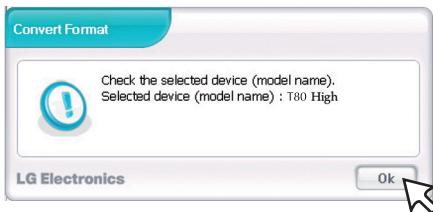


- Or press on the bottom of the LG Media Center, you can also activate the converting format program.

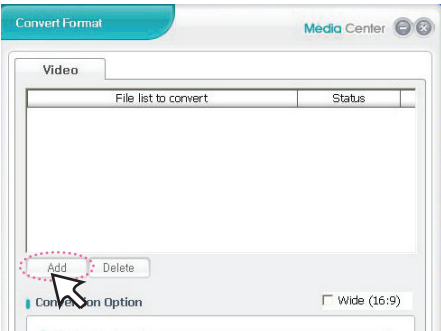
- 3 In case that the converting codec is not installed or the latest version, the pop-up window appears as below. Click [Ok].



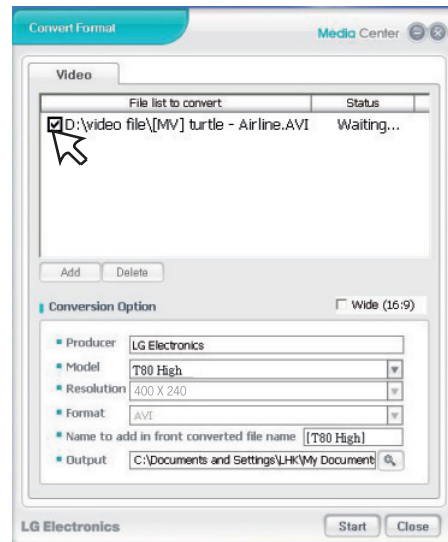
- 4 Install the latest updated version.
- 5 Click [Ok].



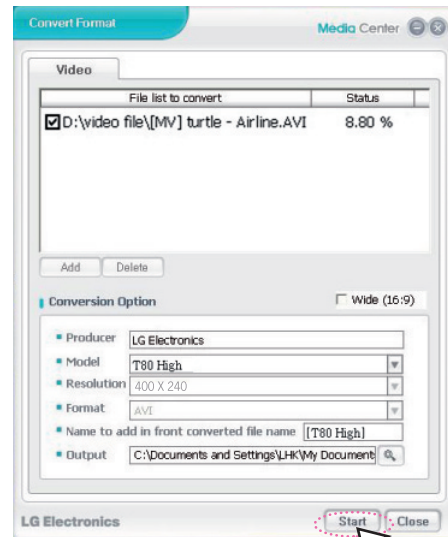
- 6 Click [Add] to select a video file you want to convert.



- 7 Check the video file and then select conversion options.



- 8 Click [Start], the selected video file start converting.



- After converting, check the video file where the file is .
- For details, see the Help menu on LG Media Center.



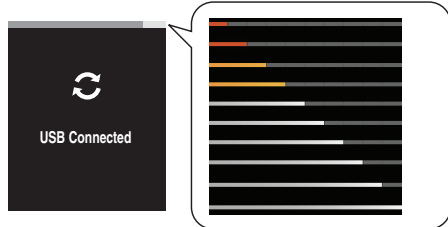
# Charging the MP3 player

## USB cable

MP3 player will be also automatically charged when connecting the PC and MP3 player with USB cable.

- On the display of MP3 player, the charging status will be displayed as follows: (Charging time : about 4 hours)

Charging status



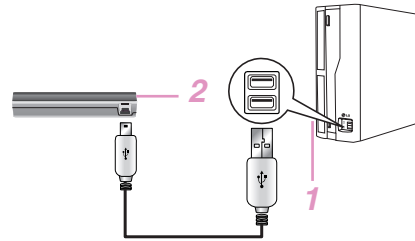
### Note

- MP3 player may completely discharged first time you purchase the product. Charge the battery first.
- Charging time may vary according to PC system requirements or operating environment. If your PC is suspended, MP3 player is not charged.
- Do not charge MP3 player for longer than 12 hours. Overcharge and overdischarge may shorten the battery life.
- After checking the state of a remaining battery of note book, connect the USB cable and charge it.
- Do not charge it when the remaining battery of the note book is not enough.
- If you transfer files on charging, the charging time will be extended.
- Charge the battery in a place with a normal temperature.
- In case you connect the device to PC with an extended usb cable or non-certified usb hub, it may not operate.

## AC adapter(Not supplied)

1 Connect the AC adapter to the AC outlet.

2 Connect the USB cable of AC adapter to the USB port of MP3 player.



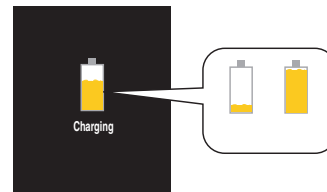
- On the display of MP3 player, the charging status will be displayed as follows: (Charging time: about 4 hours)

### Power-on status

Charging status



### Power-off status



### Note


- Do not disconnect AC Adapter before booting of MP3 player is completed. The data may get lost.
- Use the confirmed AC adapter(EAY34275101) when you charge the MP3 player, otherwise the MP3 player may malfunction.
- Do not charge MP3 player for longer than 12 hours. Overcharge and overdischarge may shorten the battery life.
- Charge the battery in a place with a normal temperature.




# Basic operation

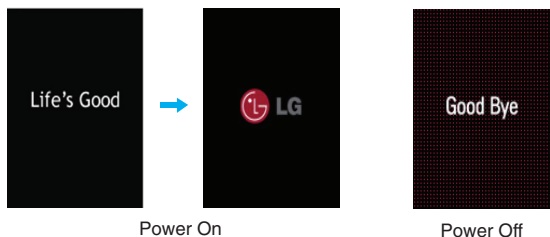
## Turning on/off the power

### Turning on the power

Push the power on/off switch in the direction of the  until MP3 player is turned on.

### Turning off the power


Push the power on/off switch in the direction of the  until MP3 player is turned off.

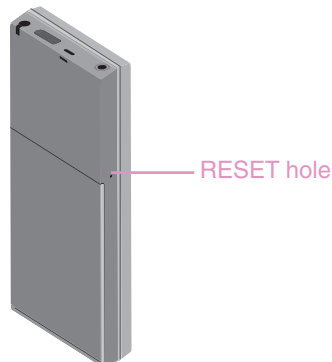


## Reset feature

This feature is to reset the player when the MP3 player does not operate normally.





Prick the hole with a sharp object when the MP3 player does not operate normally.

- Push the power on/off switch in the direction of the  for about 10 minutes if you do not have not any sharp object.



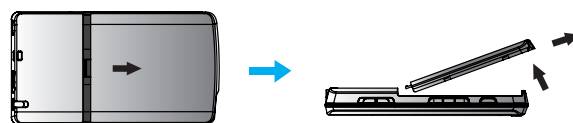
## Lock feature

This feature locks MP3 player to prevent it from operating when you accidentally press a button.

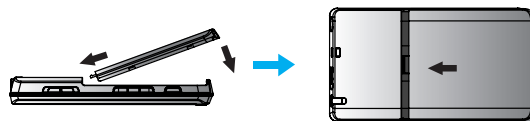
- 1 Push the power on/off switch in the direction of the  to lock MP3 player.
  - Upon locked status,  will be displayed on LCD.
  - Upon pressing of each button,  will appear for two seconds and disappear.
- 2 Push the power on/off switch in the opposite direction of the  button to unlock the device.

## Changing battery

- 1 Pull the battery cover in the direction of the arrow and lift up gently.



- 2 Detach the battery and insert a new one with +/- aligned.
- 3 Fit the fitting protrusion to the fitting groove of the player and push it gently as shown below.



### Note

- Make sure to turn the player off when changing the battery. Or it may cause errors on the DRM file playback.
- Do not use a non-certified battery. Or it may damage the player or battery and cause the battery to explode.
- Contact with one of call centers supplied with this manual to buy batteries.

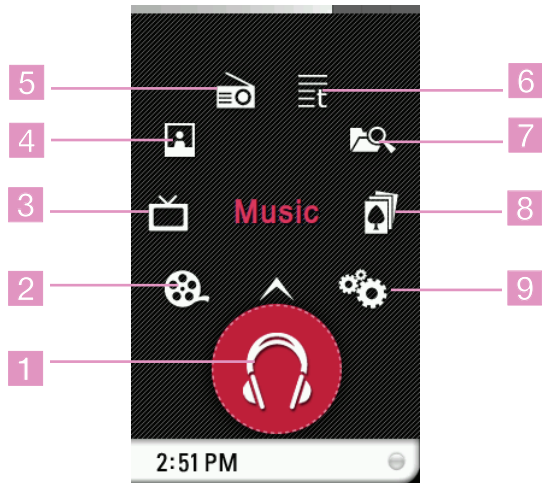


# Basic operation

## Home menu screen

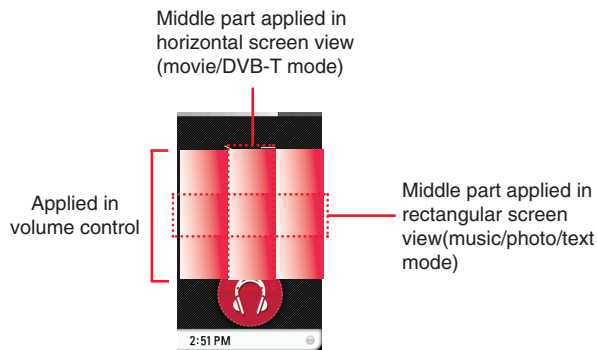
You can operate various features by using the Home menu.

\* Home menu screen varies according to product models (FM radio reception is optional.)



- 1 Music : Moves to the music mode.
- 2 Movie : Moves to the video mode.
- 3 DVB -T: Moves to the DVB-T mode.
- 4 Photo : Moves to the image mode.
- 5 Radio : Moves to FM radio reception mode.  
(FM radio reception is optional.)
- 6 Text : Moves to the text mode.
- 7 All Files : Displays the playable total list.
- 8 Game : Moves to the game mode.
- 9 Settings : Sets the operating environment of the player.

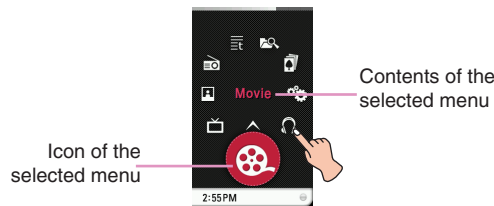
### Note



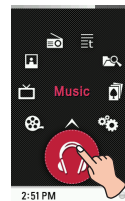
The section marked as above is specified as "middle part" in this manual.

## General operations of Home menu

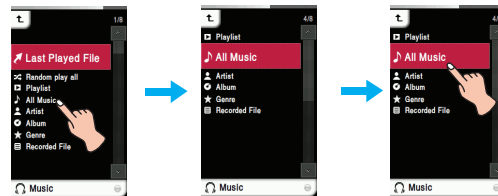
- 1 Turn the MP3 player on.  
- The home menu appears on LCD.
- 2 Press the icon of a desired menu.



- 3 Press the icon of selected menu.

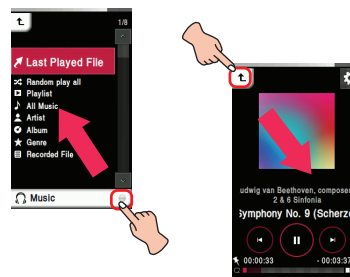


- 4 Press the desired menu to move to the second level and then press the selected menu to execute the menu.



### Note

- Press to return to the previous menu during operation.
- Press and move to the right downward direction to return to the home menu during operation.
- Press and move to the left upward direction to return to the previous menu in the home menu.







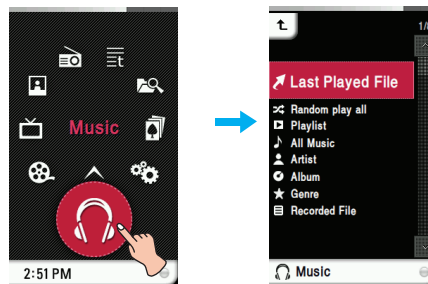
# Playing music

## Music playing screen



- 1 Moves to the previous menu or home menu.
- 2 Playback time
- 3 Bookmark display
- 4 Play mode display
- 5 Playing time bar
- 6 Remaining time
- 7 Control icons (Play/ Pause/ Skip/ FF/RW)
- 8 Music information display (Album, Artist, Title)
- 9 Image
- 10 Moves to the EZ menu.
- 11 Battery status

## Music menu



### Last Played File

Plays the last played music file.

### Random play all

Plays the music file randomly.

- When you set [Random play all] during operation, the play mode is changed to [Random all].

### Playlist

#### • My Playlist

You can select and manage your own playlist.

Edit	Delete All	Deletes all files in my playlist.
	Add Music	Adds the desired file in my playlist.

#### • PC Playlist :

The playlist created in the WMP(Windows Media Player 10 or higher) or the LG Media Center can be automatically displayed on the MP3 player through the Auto Sync mode.

- When the playlist and corresponding files are unchecked in the Auto Sync mode, music will be deleted in the MP3 player. It is recommended to keep all Music files always checked.

### All music

Displays the total music.

### Artist

Displays the music by artist.

### Album

Displays the music by album.

### Genre

Displays music by genre.

### Recorded File

Plays the radio recording file (Option by models) or voice recording file.

#### Note

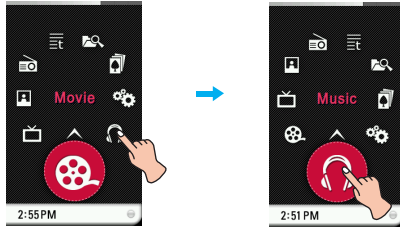
- The selected file is played when you select the desired file.
- Select a file you want and press you can delete it.



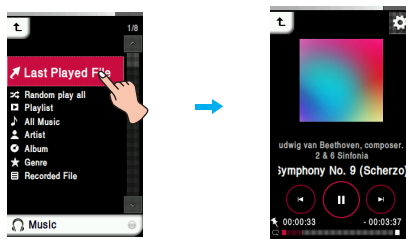
# Playing music

## Playing music files

1 Select of the home menu.

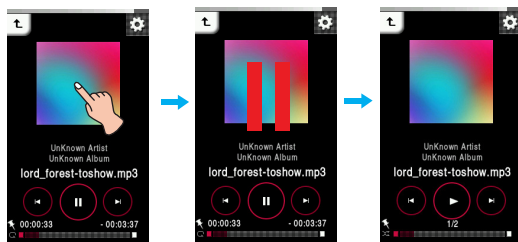


2 Select the desired menu and then press a music file you want to play.  
- If you select the [Last Played File] menu, the last played music file will be played at once.

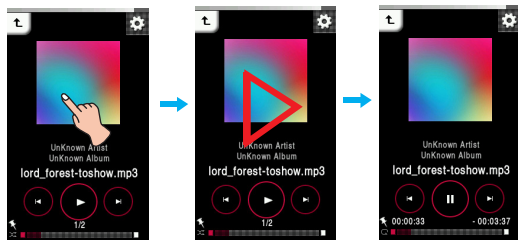


## Pausing

1 Press the middle part of LCD during playback.



2 Press the middle part of LCD again to resume playback.



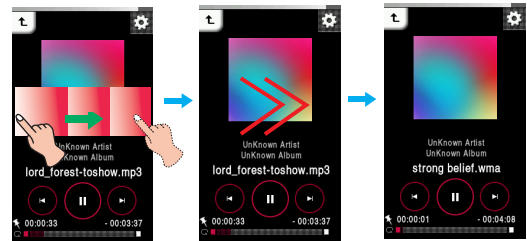
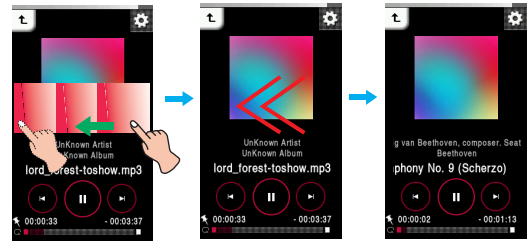
## Using the control icons

1 Press during playback to pause.

2 Press to resume playback.

## Playing the previous or next file

Drag the middle part of LCD in the direction of the left/right during playback.



- If you drag the LCD from right to left after five seconds of playing time, the current file will be played from the beginning.
- If you drag the LCD from right to left within five seconds of playing time, the previous file will be played from the beginning.

## Using the control icons

Press / button to play the previous or next file.

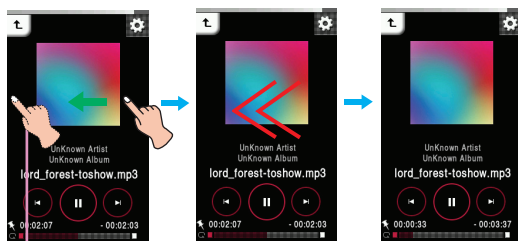
- If you press after five seconds of playing time, the current file will be played from the beginning.
- If you press within five seconds of playing time, the previous file will be played from the beginning.



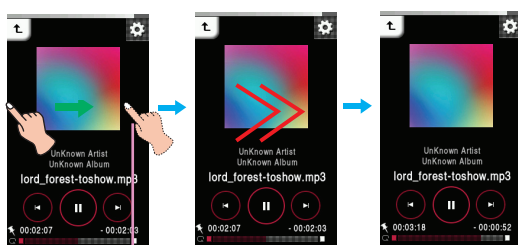
# Playing music

## Speed search

Drag the LCD during playback and then press and hold the LCD.



Release at a point you want.



Release at a point you want.

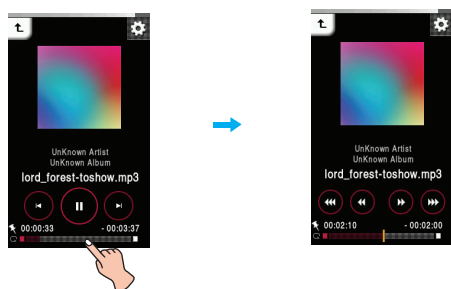
## Using the control icons

Press and hold / button for two seconds during playback. And then release at a point you want.

## Playing from a specific point

1 Press the playing time bar to play from a specific point you want during playback.

- The control box appears on LCD.



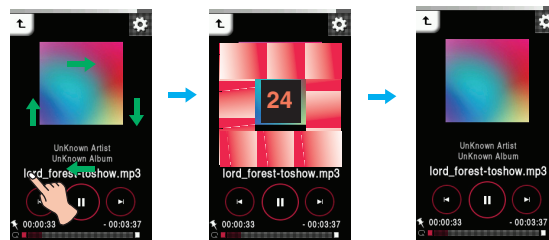
2 Press / / / .

- : Moves to the point of playing time before 1 minute. If the playing time is less than 1 minute, the current file moves to the beginning point.
- : Moves to the point of playing time before 5 seconds.
- : Moves to the point of playing time after 5 seconds.
- : Moves to the point of playing time after 1 minute. If the remaining time is less than 1 minute, the current file moves to the beginning point of next music.

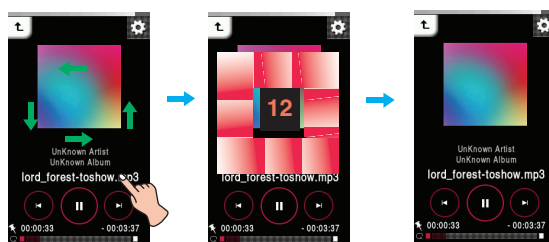
## Volume control

Touch the screen. Then keep pressing and turn the point you press on LCD clockwise/counterclockwise during playback.

### Volume up



### Volume down



## Using the volume button

Press the volume button on the right side of the player during playback.

- : Press this button to increase volume.
- : Press this button to decrease volume.

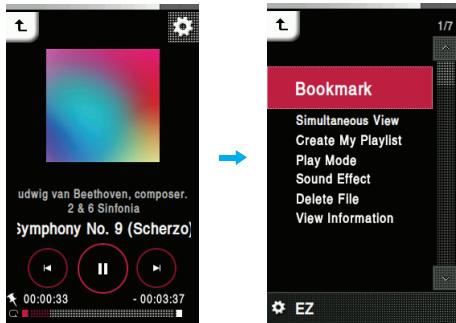


## Playing music

### EZ menu

You can set the desired function or switch to other modes using the EZ menu.

Press to select the EZ menu during playback.



### Sound Effect

You can set sound effect by selecting EQ or 3D Sound.

- **EQ:** AUTOEQ, NORMAL, POP, ROCK, R&B/SOUL, HIPHOP/RAP, JAZZ, CLASSICAL, DANCE, LIVE, USER EQ
- **3D Sound:** Off, CLEAR, 3D EXPANDER, STADIUM, CONCERT HALL, CLUB, ROOM, BASS BOOST, X-LIVE

### Delete File

- **Yes :** Deletes the playing file.
- **No :** Cancels the deleting of playing file.

### View Information

Displays the information of the playing file. (Bitrate, File Size, Sampling, Codec, Setting)

### Bookmark

You can start playback from memorized point.

- **Set :** Sets the bookmark.
- **Move :** Executes the bookmark.
- **Cancel :** Cancels the bookmark.

### Simultaneous View

- **Photo :** You can view the photo while listening to the music simultaneously.

[Photo] ⇔ (Moving to EZ menu of the photo) ⇔  
 [Music] ⇔ [Cancel]/[Play Previous]/[Play Next]/[Back]  
 - [Cancel] : Stops the music playback.  
 - [Play Previous] : Plays the previous music.  
 - [Play Next] : Plays the next music.  
 - [Back] : Moves to the music mode.

- **Text :** You can view the text while listening to the music simultaneously.

[Text] ⇔ (Moving to EZ menu of the text) ⇔ [Music]  
 ⇔ [Cancel]/[Play Previous]/[Play Next]/[Back]  
 - [Cancel] : Stops the music playback.  
 - [Play Previous] : Plays the previous music.  
 - [Play Next] : Plays the next music.  
 - [Back] : Moves to the music mode.

### Create My Playlist/Delete My Playlist

- When a currently playing music file is not added in Playlist, "Create My Playlist" is displayed.
- When a currently playing music file is added in Playlist, "Delete My Playlist" is displayed.

### Play Mode

- **Repeat One**  
Plays the current file repeatedly.
- **Play All**  
Plays all music within the selected folder in order.
- **Repeat All**  
Plays all music within the selected folder repeatedly.
- **Random All**  
Plays all music within the selected folder randomly.
- **Random Repeat All**  
Repeats all music within the selected folder randomly.



# Playing movie

## Movie playing screen

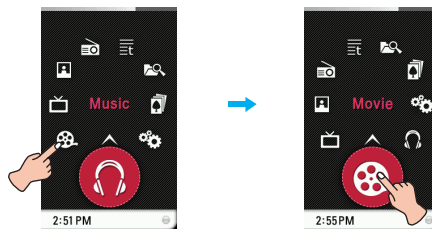


- 1 Moves to the EZ menu.
- 2 Moves to the control box. (Play/ Pause/ Skip)
- 3 Battery status
- 4 Title of the video file
- 5 Moves to the previous menu or home menu.
- 6 Bookmark display
- 7 Playback time
- 8 Playing time bar
- 9 Remaining time
- 10 Playing screen

## Playing movie files

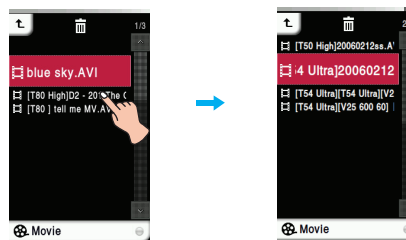
MP3 player can only play the video files converted via LG Media Center. For details about conversion, see the Help menu [Converting video file] on LG Media Center.

1 Select of the home menu.



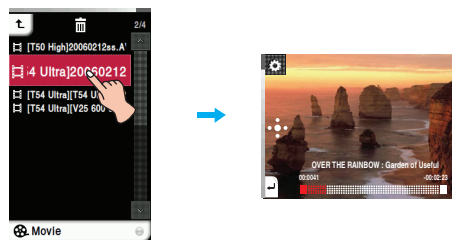
2 Select the desired file.

- The list is displayed on LCD.
- If there is no list, "No File" appears on LCD.



3 Press the desired file.

- The movie file is played.
- The movie file will be displayed on the horizontal screen.



### Note

- Select a file you want and press , you can delete it.



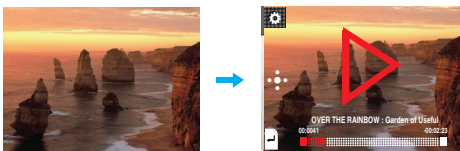
# Playing movie

## Pausing

1 Press twice the middle part of LCD during playback.



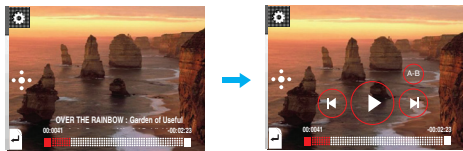
2 Press twice the middle part of LCD again to resume playback.



## Using the control box

1 Press the LCD during playback.

2 Press .  
- The control box appears on LCD.



3 Press to pause.

- appears on LCD.

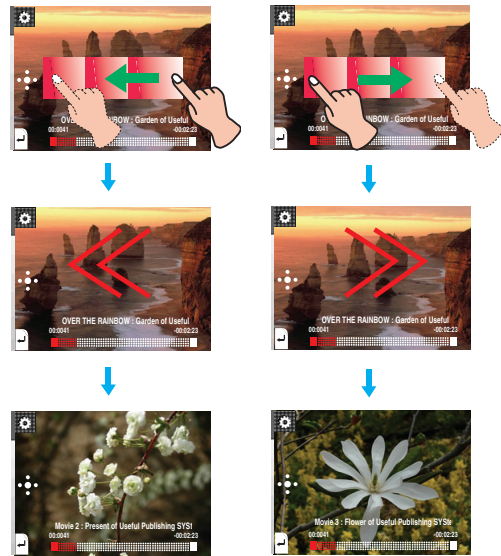
4 Press to resume playback.

5 Press or other space to remove the control box.

## Playing the previous or next file

1 Press the LCD during playback.

2 Drag the middle part of LCD in the direction of the left/right during playback.

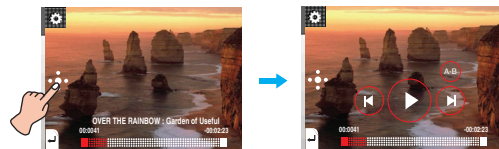


- If you drag the LCD from right to left after five seconds of playing time, the current file will be played from the beginning.
- If you drag the LCD from right to left within five seconds of playing time, the previous file will be played from the beginning.

## Using the control box

1 Press the LCD during playback.

2 Press .  
- The control box appears on LCD.



3 Press / to play the previous or next file.

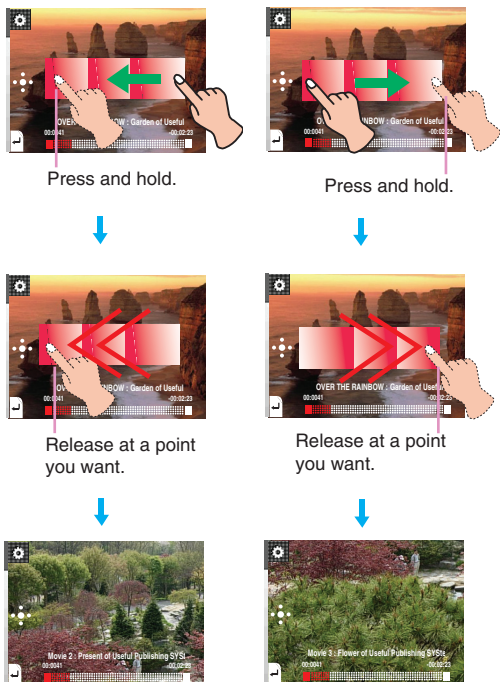
- If you press after five seconds of playing time, the current file will be played from the beginning.
- If you press within five seconds of playing time, the previous file will be played from the beginning



# Playing movie

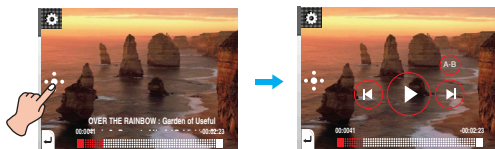
## Speed search

- 1 Press the LCD during playback.
- 2 Drag the middle part of LCD in the direction of the left/right during playback and then press and hold the LCD.



## Using the control box

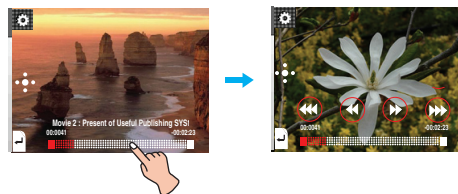
- 1 Press **[Control Box]** during playback.
  - The control box appears on LCD.



- 2 Press and hold **[Repeat]** button for two seconds during playback. And then release at a point you want.

## Playing from a specific point

- 1 Press the LCD during playback.
- 2 Press the playing time bar to play from a specific point you want during playback.
  - The control box appears on LCD.

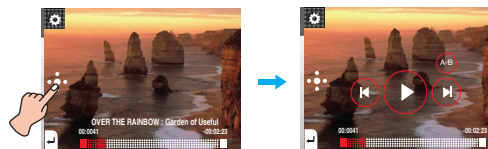


- 3 Press **[1 min]** / **[5 sec]** / **[1 min]**.
  - **[1 min]**: Moves to the point of playing time before 1 minute. If the playing time is less than 1 minute, the current file moves to the beginning point.
  - **[5 sec]**: Moves to the point of playing time before 5 seconds.
  - **[1 min]**: Moves to the point of playing time after 5 seconds.
  - **[1 min]**: Moves to the point of playing time after 1 minute. If the remaining time is less than 1 minute, the current file moves to the beginning point of next movie.

## A-B section repeat

This feature can be set only on a current playing movie file.

- 1 Press **[A-B]** during playback.
  - The control box appears on LCD.



- 2 To set the starting point during playback, press **[A]**.
  - "A" icon appears on LCD.
- 3 To select the ending point, press **[B]** again. Then, the Repeat feature will be set.
  - "B" icon appears on LCD.
- 4 To cancel Repeat feature, press **[Repeat]** again.
  - "A" and "B" icons disappear on LCD.

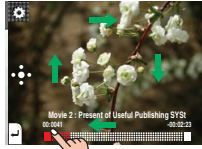


# Playing movie

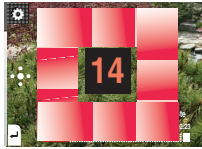
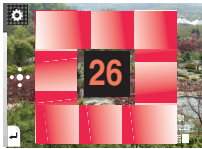
## Volume control

Touch the screen. Then keep pressing and turn the point you press on LCD clockwise/counterclockwise during playback.

### Volume up



### Volume down



## Using the volume button

Press the volume button on the right side of the player during playback.

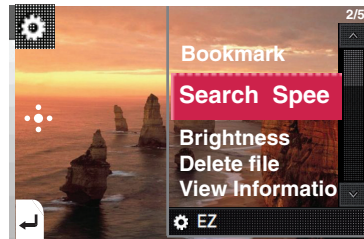
- : Press this button to decrease volume.
- : Press this button to increase volume.

## EZ menu

You can set the desired function or switch to other modes using the EZ menu.

**Touch the screen once.**

Press to select the EZ menu during playback.



## Bookmark

You can move to the point you set while playing the video.

- **Set**  
Sets the bookmark.
- **Move**  
Executes the bookmark.
- **Cancel**  
Cancels the bookmark.

## Search Speed

You can set the playing speed of movies files.

- **1 time**  
Plays at an original speed.
- **2 times**  
Plays at 2 times speed.
- **3 times**  
Plays at 3 times speed.

## Brightness

You can adjust the brightness level from 0 to 9. The default brightness is 6.

## Delete File

- **Yes** : Deletes the playing file.
- **No** : Cancels the deleting of playing file.

## View Information

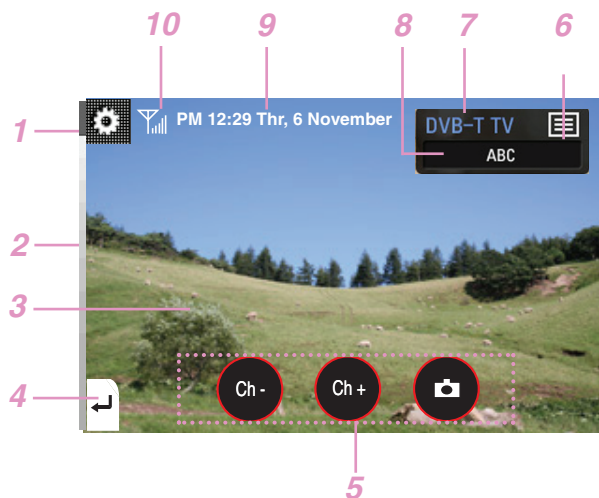
Displays the information of the playing file. (File Name, Full Time , File Size, Setting)





# Enjoying DVB-T

## DVB-T broadcasting screen



- 1 Moves to the EZ menu.
- 2 Battery status
- 3 DVB-T broadcasting display
- 4 Moves to the home menu.
- 5 Control icons
  - To move to the previous/next channel
  - To capture screen display
- 6 Channel list icon
- 7 DVB-T TV/Radio display
- 8 Information display for the currently broadcasting channel
- 9 Current time/date
 

\* When watching DVB-T, the actual time, date, and GMT time offsets are set automatically.  
If the displayed time is not correct, the time and timezone must be set manually.
- 10 Receiving signal strength

The making of unauthorized copies of copy-protected material, including computer programs, files, broadcasts and sound recordings, may be an infringement of copyrights and constitute a criminal offence. This equipment should not be used for such purposes.

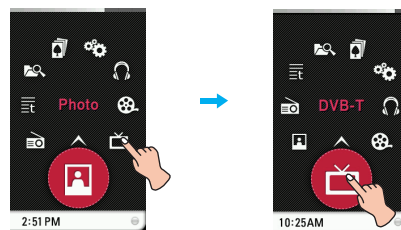
Be responsible  
Respect copyrights

### Note

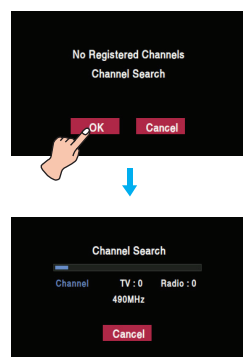
- The player may be overheated since the player consumes more power while enjoying DVB-T broadcast. Overheating does not affect the signal receiving of the broadcast.
- Only the UHF band broadcast is supported in this player.
- Reception sensitivity may be different depending on signal receiving areas.
- Signal reception may get weak while moving in bus, train, or some places enclosed by buildings or indoors depending on countries adopting DVB-T standard.
- HD channels and paid ones are not supported in this player.

## Entering the DVB-T mode

1 Press LCD to enter the DVB TV/Radio mode.

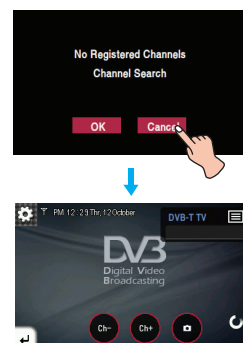


2-a When there is no saved channel, the screen is displayed as below. Press OK, the player starts searching channels.



- Press Cancel when channel search is not completed, the last searched channel is broadcasted. In that case, only the channels the player searched at that time are saved.
- When channel search is completed, the player moves to TV mode and last searched TV channel is broadcasted.
- In the case only radio channels are searched, the player moves to Radio mode and a last searched Radio channel is broadcasted.
- You can enjoy the broadcasting only on a horizontal screen.
- The searched channels may differ depending on the service areas.

2-b Press Cancel, the screen is changed into standby mode.



3 Press and drag right upward to return to the Home menu.  
- In that case, the broadcasting stops automatically.



# Enjoying DVB-T

## Viewing the channel list for TV/Radio

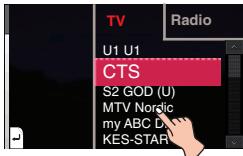
- 1 Press while enjoying DVB-T TV/Radio.  
- Then, the list for TV/Radio is displayed on the right.



- 2 Press TV/Radio to turn into TV/Radio mode.



- 3 Select a channel you want to watch or listen to.



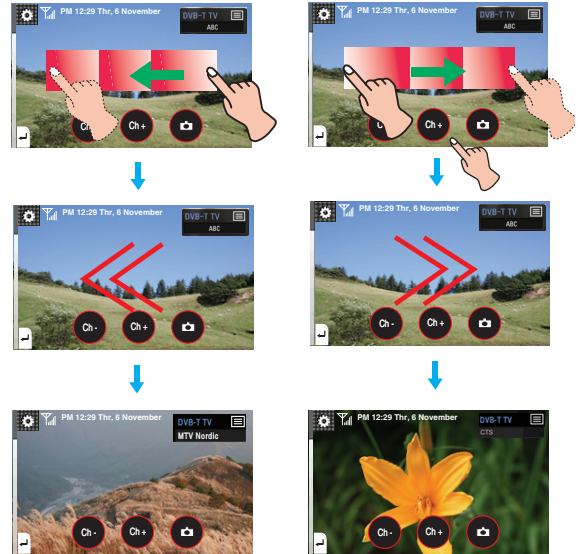
- 4 Press it; you can enjoy TV/Radio broadcasting.



- Press on TV/Radio mode, you can see only favorite channels you previously classified as favorites.
- You can check the list only when setting Electronic Program Guide to off on EZ menu. For details, refer to the page 28.

## Moving to the previous/next channel

- 1 Press the LCD once during broadcasting.
- 2 Drag the middle part of LCD in the direction of the left/right during broadcasting.




## Using the control icons

- 1 Press to move to the previous channel.
- 2 Press to move to the next channel.



# Enjoying DVB-T

## Capturing the screen display

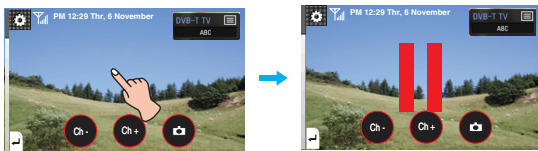
Press , the broadcasting screen shot is captured and saved as a BMP file.



- You can check the captured image on the Photo list.
- This function is available only on DVB-T TVmode.

## Muting sound

1 Press the middle part of the screen twice while watching or listening to broadcasting to mute it.



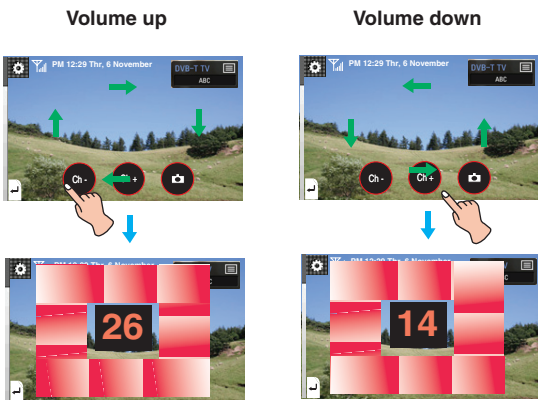
2 Press the part twice again to deactivate mute operation.

- You can also deactivate it by adjusting volume.





## Volume control

Touch the screen. Then keep pressing and turn the point you press on LCD clockwise/counterclockwise during playback.



## Using the volume button

Press the volume button on the right side of the player during playback.

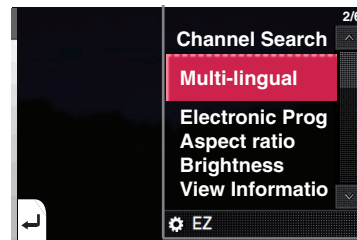
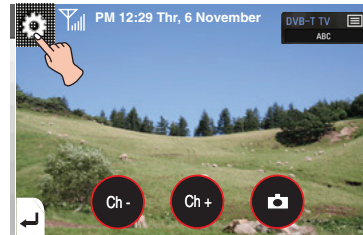
-  : Press this button to decrease volume.
-  : Press this button to increase volume.

## EZ menu

You can set the desired function or switch to other modes using the EZ menu.

**Touch the screen.**

Press  to select the EZ menu during broadcasting.



## Channel Search(DVB-T TV/Radio)

1 Select and press [Channel Search].

2 - When no channel is saved

- 1) Press [OK], and then the player starts channel search.
- 2) Press [Cancel], the screen is changed into the standby mode for DVB-T.

- When saved channels exist

- 1) Press [OK], the previous saved channels are deleted. And then the player starts channel search.
- 2) Press [Cancel], the screen is returned to the previously broadcasting channel.

### Note

Press Cancel when channel search is not completed, the last searched channel is broadcasted.

- In that case, only the channels the player searched at that time are saved.
- When no channel is saved, the screen is returned to the previously broadcasting channel.

## Multi-Lingual(DVB-T TV)

You can select the language when a broadcasting channel supports multi-lingual broadcasting.

The default language is the first registered one in a broadcasting channel.



# Enjoying DVB-T

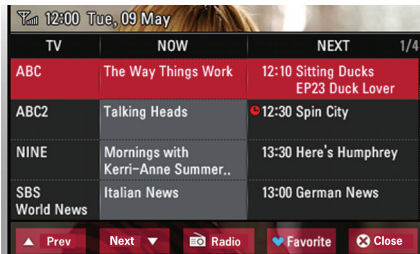
## Electronic Program Guide(DVB-T TV/Radio)

EPG(Electronic Program Guide; specified as EPG hereafter) helps you to see what is currently being shown on the channels you receive. You can set ON or OFF to activate the EPG.

### • Setting EPG

- **On** : You can activate EPG.
- **Off** : You can deactivate EPG.

### • Basic function of EPG



### • PREV

You can check the previous EPG contents.

### • NEXT

You can check the next EPG contents.

### • TV/Radio

It will toggle between DVB-T TV and Radio modes.

### • Favorite

It will toggle the EPG between showing just "favorites" and all channels.

### • Close

You can return to the previous broadcasting channel.

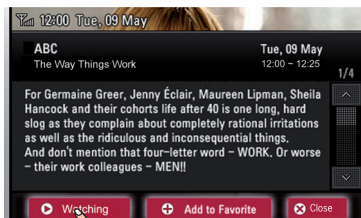
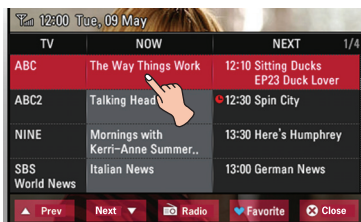
### • Checking the detailed channel information

Select a program on [NOW] or [NEXT] column of EPG, a pop-up window appears.

- It brings up more information about the corresponding program.

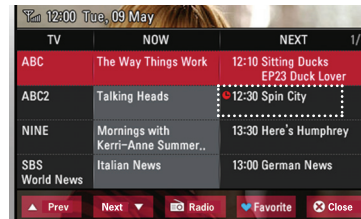
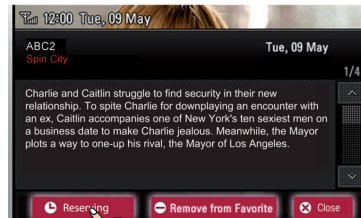
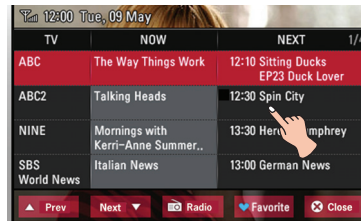
### • Watching DVB-T TV/Radio

- 1 Select a program on [NOW] column of EPG.
- 2 Press [Watching], you can watch or listen to the corresponding program.



### • Reserving DVB-T TV/Radio programs

- 1 Select a program on [Reserving] column of EPG to reserve it.
- 2 The program is marked with the icon as shown blow.

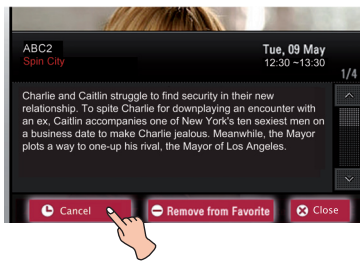
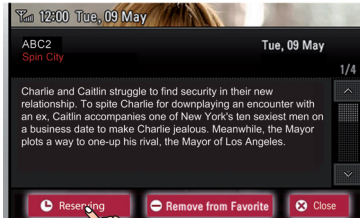
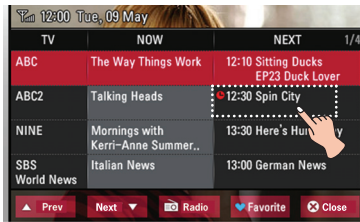




# Enjoying DVB-T

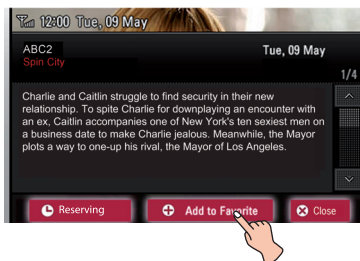
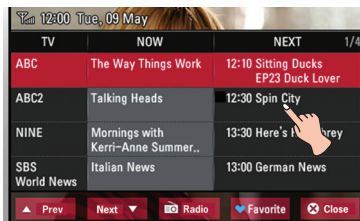
## • Canceling the reservation

- 1 Select and press the channel you previously reserved.
- 2 Press [Reserving] again, the button is toggled into [Cancel].
- 3 Press [Cancel] to cancel reservation.



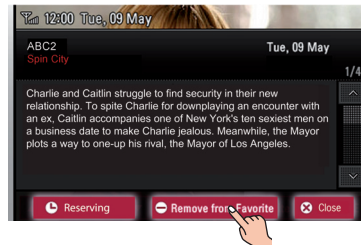
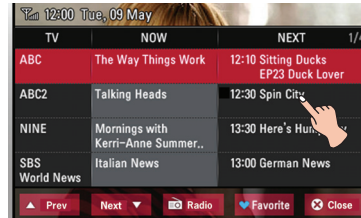
## • Adding a channel to the favorite channel list

- 1 Select and press a channel you want to add to Favorite.
  - When the selected program is not registered as a favorite one, [Add to Favorite] is displayed on the bottom of the display screen.
- 2 Press [Add to Favorite] to add the channel to the Favorite list.



## • Removing a channel from the favorite channel list

- 1 Select and press the channel you want to remove from Favorite.
  - When the selected program is registered as a favorite one, [Remove from Favorite] is displayed on the bottom of the display screen.
- 2 Press [Remove from Favorite] to remove the channel from the Favorite list.



## Aspect ratio(DVB-T TV)

You can set the screen ratio between 4:3 or 16:9.  
The default screen ration is 16:9.

## Brightness(DVB-T TV)

You can adjust the brightness level from 0 to 9.  
The default brightness is 6.

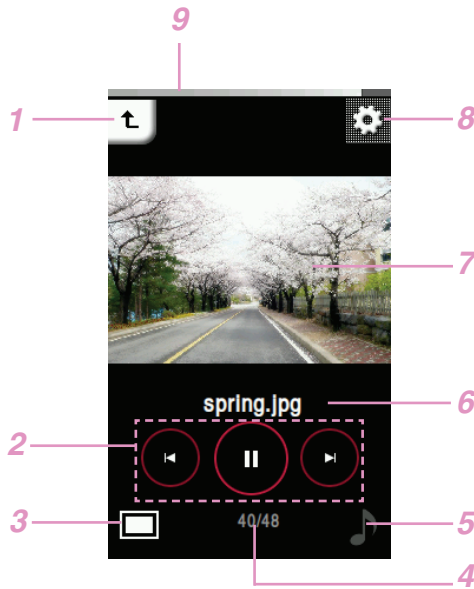
## View information(DVB-T TV/Radio)

Displays the information of the broadcasting channel.  
(Channel Number, Program Name, Frequency, Language Code)



# Viewing photo

## Photo viewing screen

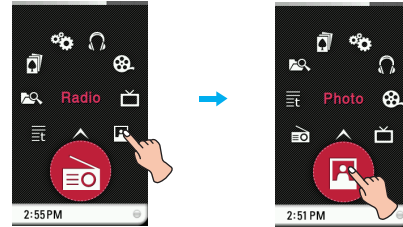


- 1 Moves to the previous menu or home menu.
- 2 Control icons (Slide show/ Skip)
- 3 Enlarging/ Reducing the photo size
- 4 Current file number/total file numbers
- 5 Music/ Radio display
- 6 File name
- 7 Photo screen
- 8 Moves to the EZ menu.
- 9 Battery status

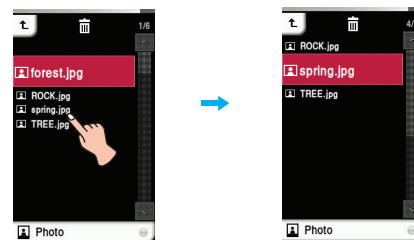
The player is not supported some JPEG Progressive files.  
Download through the LG Media Center

## Viewing photo files

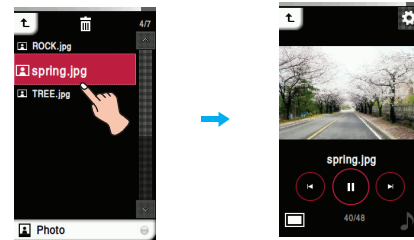
1 Select of the home menu.



2 Press the desired file.  
- The list is displayed on LCD.  
- If there is no list, "No File" appears on LCD.



3 Press the desired file.  
- The photo file appears on LCD.

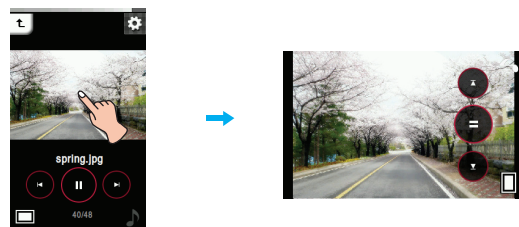


### Note

- MP3 player may not be played a black-and-white photo or large-capacity file.
- Select a file you want and press , you can delete it.
- Large-sized photos may not be opened or played.

## Enlarging/ Reducing the photo size

1 Press to enlarge the photo size while viewing a photo.  
2 Press it again to reduce the size.



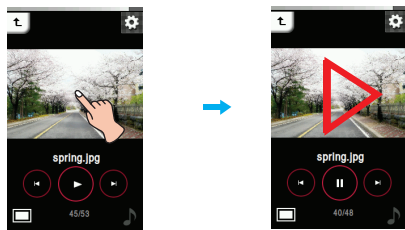
- Horizontal size is longer than vertical size of a photo file will be displayed on the horizontal screen.



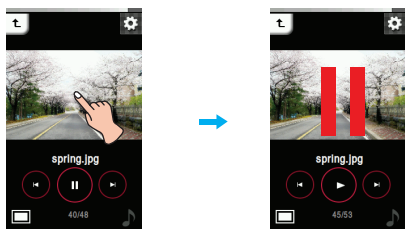
# Viewing photo

## Setting the slide show

1 Press the middle part of LCD when a photo file is displayed.



2 Press the middle part of LCD again to pause.



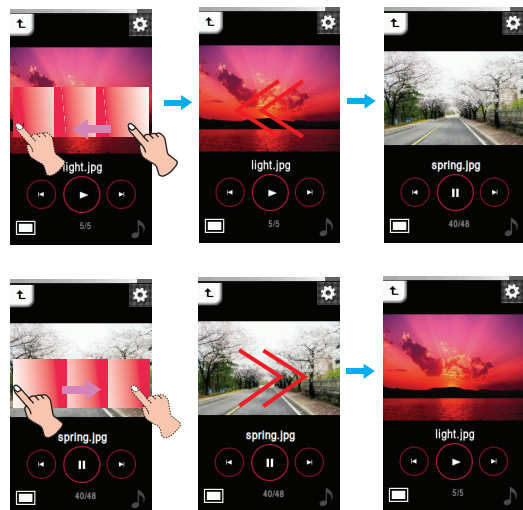
## Using the control icons

1 Press to set slide show.

2 Press to pause.

## Viewing the previous or next file

Drag the middle part of LCD in the direction of the left/right during playback.



## Using the control box

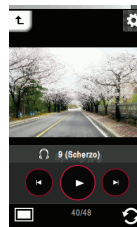
Press / button to view the previous or next photo.

## Viewing photos while listening to music/radio

Press or (you previously set on the DUAL of EZ menu) to listen to music or radio while enjoying photos. Refer to DUAL of the page 33 for the method on how to set music/radio mode in detail.

### Viewing photos while listening to music

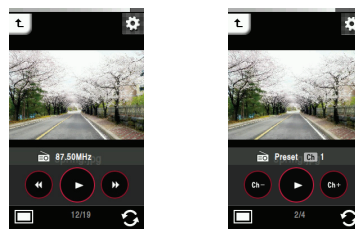
Press . Then the control box is displayed as shown below.



- : You can start playing music.
- : You can pause playback.
- / : 1. Short key: Press this button briefly, you can play the previous or next file.  
2. Long key: Press and hold this button, you can search a desired music file.

### Viewing photos while listening to radio

Press . Then the control box is displayed as shown below. The mode is displayed as you previously on radio mode.



Non-Preset mode

Preset mode

- : You can start radio play.
- : You can pause playback.
- / (In Non-Preset mode): Press this button, you can find available radio station.
- / (In Preset mode): Press this button, you can listen to the previous/next preset channel.



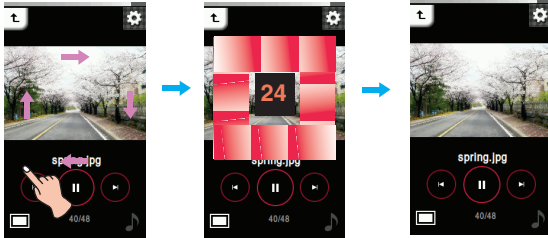
## Viewing photo

### Volume control

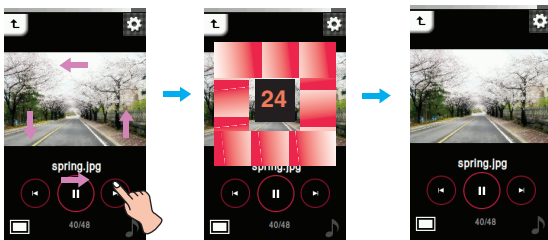
When you listen to music or radio while viewing the photo file, control the volume. (FM radio reception is optional.)

Touch the screen. Then keep pressing and turn the point you press on LCD clockwise/counterclockwise during playback.

#### Volume up





#### Volume down



### Using the volume button

Press the volume button on the right side of the player during playback.

-  : Press this button to increase volume.
-  : Press this button to decrease volume.



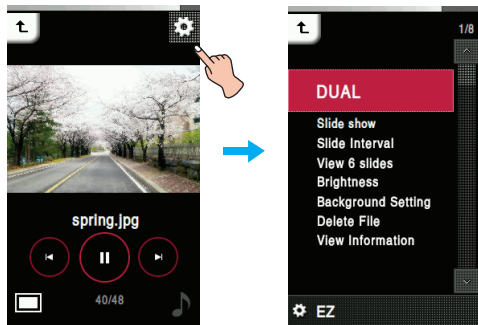


# Viewing photo

## EZ menu

You can set the desired function or switch to other modes using the EZ menu.

Press to select the EZ menu while viewing the photo.



## DUAL

You can listen to music or radio while viewing the photo file. (FM radio reception is optional.)

- **Music** : You can listen to music while viewing the photo file.
  - [] (Moving to EZ menu of the photo) ⇒ [Music] ⇒ [Cancel]/[Play Previous]/[Play Next]/[Back]
  - [Cancel] : Stops the music playback.
  - [Play Previous] : Plays previous music.
  - [Play Next] : Plays next music.
  - [Back] : Moves to the music mode.
- **Radio** : You can listen to radio while viewing the photo file.
  - [] (Moving to EZ menu of the photo) ⇒ [Radio] ⇒ [Cancel]/[Previous Channel]/[Next channel]/[Back]
  - [Cancel] : Stops the radio reception.
  - [Previous Channel] : Receives the previous channel.
  - [Next Channel] : Receives the next channel.
  - [Back] : Moves to the radio mode.

## Slide Show

You can set the slide show to On/Off.

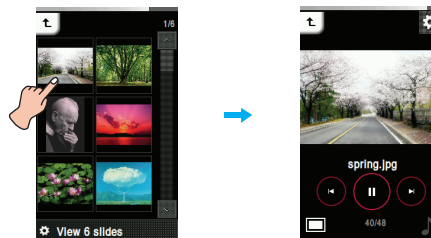
- **On**  
Turns on the slide show.
- **Off**  
Turns off the slide show.

## Slide Interval

You can set the slide show interval to [2 sec], [3 sec], [4 sec], or [5 sec].

## View 6 slides

You can show 6 slides on one screen.



## Brightness

You can adjust the brightness level from 0 to 9. The default brightness is 6.

## Background Setting

You can set the photo you are viewing currently into Music/Radio/Menu/Screen saver background.

- **Music Background**  
You can set the currently viewing photo file to music background.
- **Radio Background**  
You can set the currently viewing photo file to Radio background.
- **General background**  
You can set the currently viewing photo file to each menu background.
- **Screen saver background**  
You can set the currently viewing photo file to screen saver background.

## Delete File

- **Yes** : Deletes the playing file.
- **No** : Cancels the deleting of playing file.

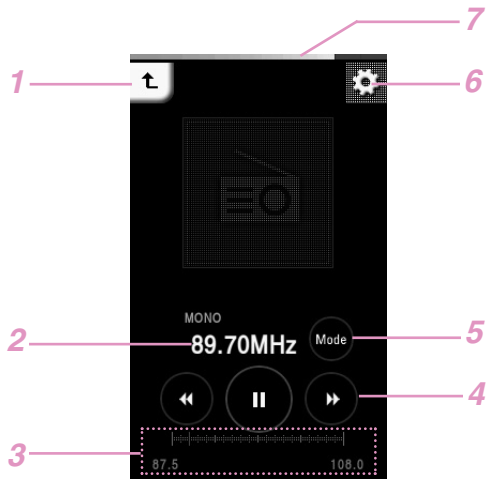
## View Information

Displays the information of the playing file. (File Name, File Kind, File Size, Setting)



# Listening to the FM radio(Optional)

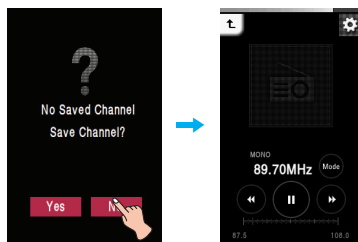
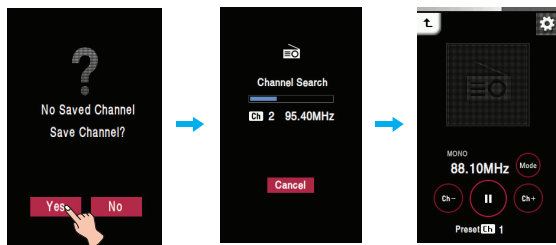
## FM radio reception screen



- 1 Moves to the previous menu or home menu.
- 2 FM radio frequency display
- 3 FM radio frequency display bar(In non-preset mode)  
Channel no.(In preset mode)
- 4 Control icons (Play/ Mute/ Frequency search)
- 5 Mode changing icon
- 6 Moves to the EZ menu.
- 7 Battery status

## Setting preset channels

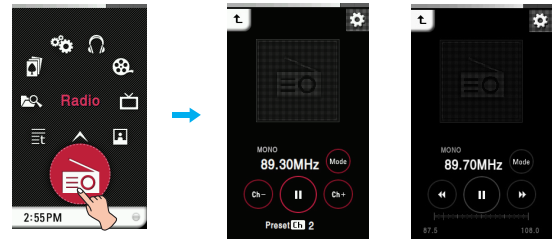
- 1 Select of the home menu.
- 2 If you want to store the channel press [Yes], otherwise press [No].
  - You can save maximum 20 channels and existing channels will be deleted.
  - In an area with weak reception, the detected channels may be less than 20.



- 3 The FM radio broadcasting is received.

## Listening to the FM radio

- 1 Select of the home menu.
- 2 You can listen to the FM radio.



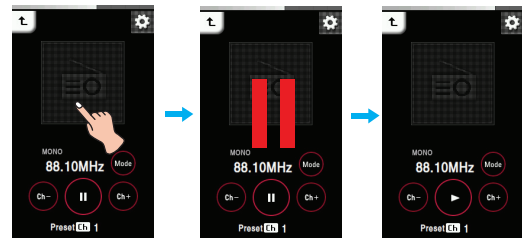
Preset mode      Non-Preset Mode

### Note

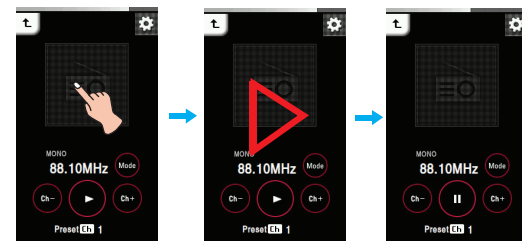
- The mode is displayed as you previously on the radio mode.
- Press once to check the channel list on the preset mode.
- Select a channel you want and press , you can delete it.

## Muting sound

- 1 Press the middle part of LCD while listening to the radio.



- 2 Press the middle part of LCD again to listen to the radio.
  - You can also deactivate it by adjusting volume.



## Using the control icons

- 1 Press to set muting.
- 2 Press to listen to the radio.



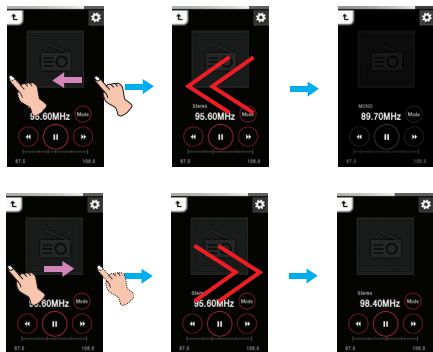
# Listening to the FM radio(Optional)

## Searching the FM radio stations

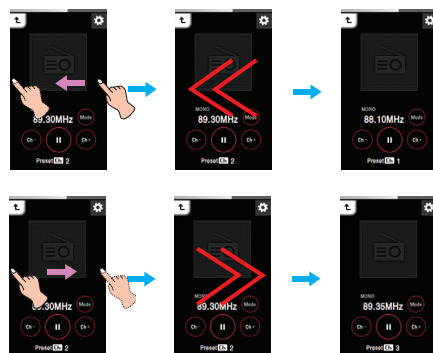
### Manual Search

Drag the middle part of LCD in the direction of the left/right while listening to the radio.

**Non-Preset Mode** (Decreases/increases step by step.)



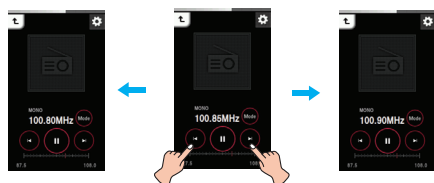
**Preset Mode** (Decreases/increases channel by channel.)



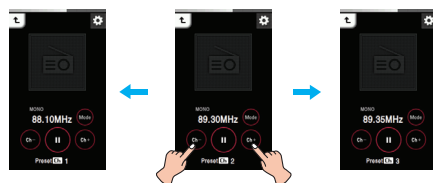
### Using the control icons

- Press on LCD until the and appear on Non-Preset Mode.
- Press on LCD until the and appear on Preset Mode.

### Non-Preset Mode

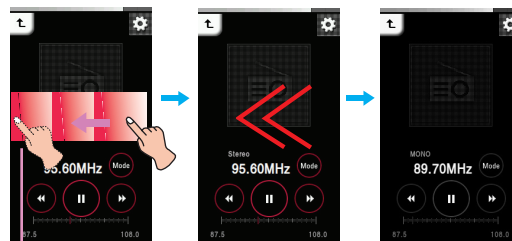


### Preset Mode

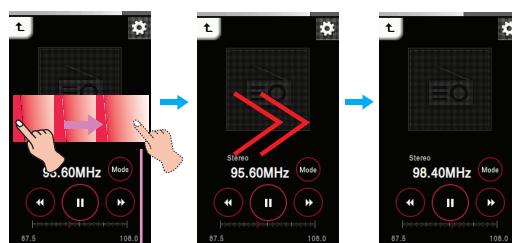


### Automatic Search

Drag the middle part of LCD in the direction of the left/right during reception and then press and hold the LCD.



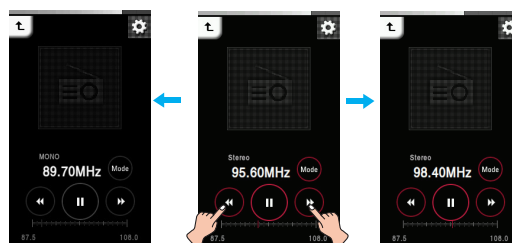
Press the LCD for about 2 seconds.



Press the LCD for about 2 seconds.

### Using the control icons

- 1 Press on LCD until the and appear on LCD.
- 2 Press or , the player will search available frequency automatically.
  - : The player searches previous available frequencies.
  - : The player searches next available frequencies.
- 3 Press during automatic search, the auto search is canceled.
  - Reception may be weak in some areas.
  - As earphones function as antennas, only LG Electronics' ear-phones guarantees the reception quality.



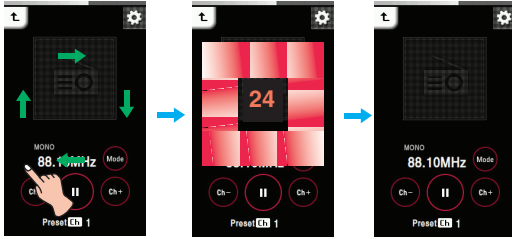


# Listening to the FM radio(Optional)

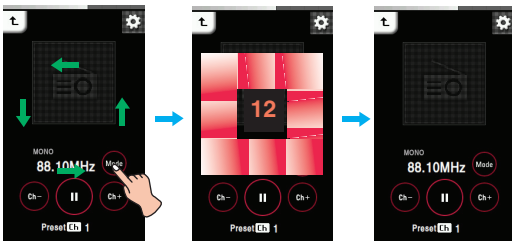
## Volume control

Keep pressing and turn the point you press on LCD clockwise/counterclockwise while listening to the radio.

### Volume up



### Volume down



## Using the volume button

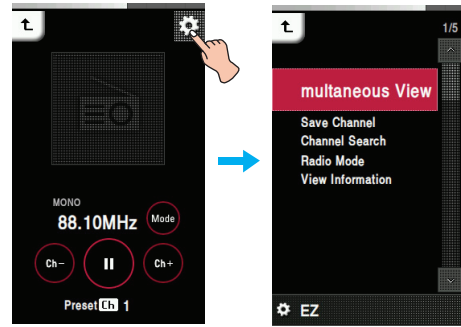
Press the volume button on the right side of the player during play-back.

- : Press this button to increase volume.
- : Press this button to decrease volume.

## EZ menu

You can set the desired function or switch to other modes using the EZ menu.

Press to select the EZ menu while listening to the radio.



## Simultaneous View

• **Photo** : You can view the photo while listening to the radio simultaneously.

- [Photo] ⇒ (Moving to EZ menu of the photo) ⇒ [Radio] ⇒ [Cancel]/[Previous Channel]/[Next Channel]/[Back]
- [Cancel] : Stops the radio reception.
- [Previous Channel] : Receives the previous channel.
- [Next Channel] : Receives the next channel.
- [Back] : Moves to the radio mode.

• **Text** : You can view the text while listening to the radio simultaneously.

- [Text] ⇒ (Moving to EZ menu of the text) ⇒ [Radio] ⇒ [Cancel]/[Previous Channel]/ [Next Channel]/[Back]
- [Cancel] : Stops the radio reception.
- [Previous Channel] : Receives the previous channel.
- [Next Channel] : Receives the next channel.
- [Back] : Moves to the radio mode.

## Delete Channel/Save Channel

Deletes or stores a radio channel.

## Channel Search

You can store the FM radio channel automatically.  
 - The previously memorized channel will be deleted.  
 - Press [Cancel] to stop while searching the channel.

## Radio Mode

You can select the channel mode or frequency mode.

### • Preset Mode

You can set the FM radio broadcasting to channel mode.

### • Non-Preset Mode

You can set the FM radio broadcasting to frequency mode.

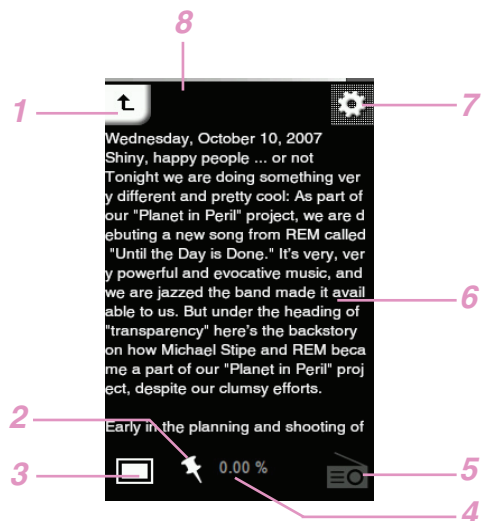
## View Information

Displays the information of the receiving radio.  
 (Frequency, Reserved REC Interval, Reserved REC Time , Reserved frequency, Setting)



# Viewing text

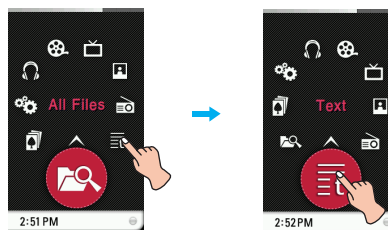
## Text viewing screen



- 1 Moves to the previous menu or home menu.
- 2 Bookmark display
- 3 Enlarging/ Reducing the text display size
- 4 Displayed page percentage
- 5 Music/ Radio display
- 6 Text display
- 7 Moves to the EZ menu.
- 8 Battery status

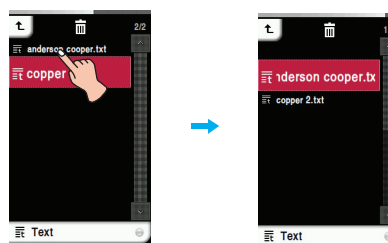
## Viewing text files

1 Select of the home menu.



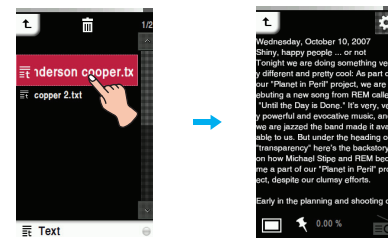
2 Select the desired list.

- The list is displayed on LCD.
- If there is no list, "No File" appears on LCD.



3 Press the desired file.

- The text file appears on LCD.



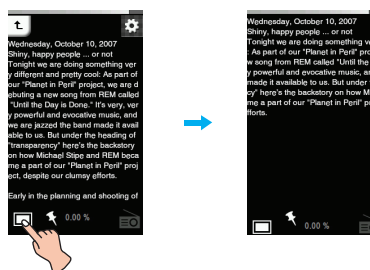
### Note

- Select a file you want and press , you can delete it.
- Press [Settings] of Home Menu => [Text] => [Screen display] to select screen display.
  - Portrait : Texts are displayed vertically.
  - Landscape: Texts are displayed horizontally.

## Enlarging/ Reducing the text display size

1 Press to enlarge the text display size while reading texts.

2 Press it again to reduce the size.

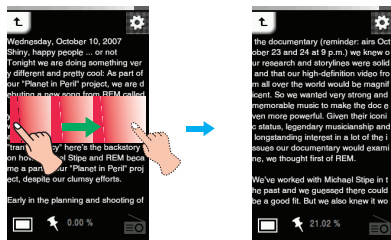
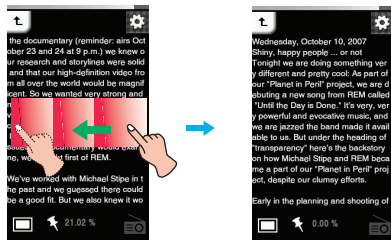




# Viewing text

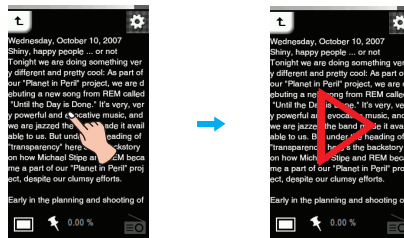
## Viewing the previous or next page

Drag the middle part of LCD in the direction of the left/right during playback.

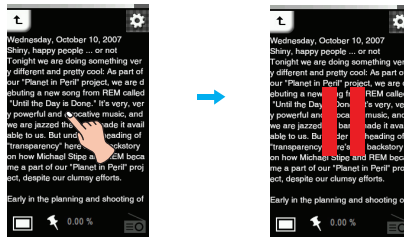


## Skipping pages automatically

1 Press the middle part of LCD when a text file is displayed.

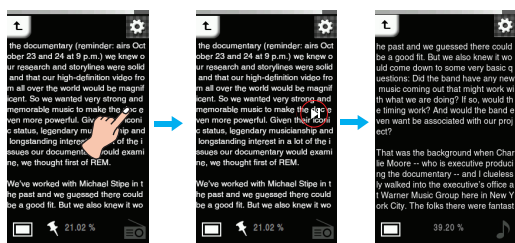
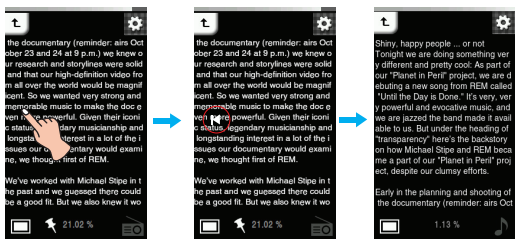


2 Press the middle part of LCD again to pause.



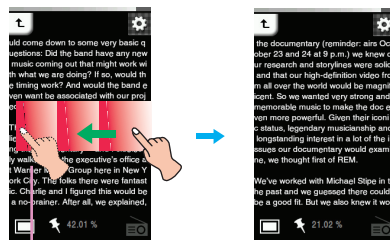
## Using the skip icon

- 1 Touch the left or right end of the screen while you view texts.
- 2 ⏮/⏭ is displayed and the player moves to the previous or next page.

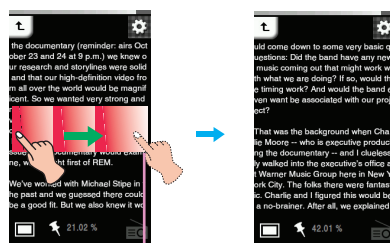


## Speed search

Drag the LCD during playback and then press and hold the LCD.



Release at a point you want.



Release at a point you want.



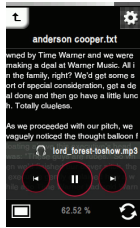
# Viewing text

## Viewing texts while listening to music/radio

Press or (you previously set on the DUAL of EZ menu) to listen to music or radio while reading texts. Refer to DUAL of the page 40 for the method on how to set music/radio mode in detail.

### Viewing texts while listening to music

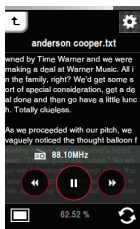
Press . Then the control box is displayed as shown below.



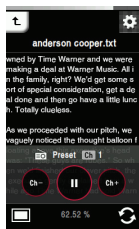
- : You can start playing music.
- : You can pause playback.
- : 1. Short key: Press this button briefly, you can play the previous or next file.  
2. Long key: Press and hold this button, you can search a desired music file.

### Viewing texts while listening to radio

Press . Then the control box is displayed as shown below. The mode is displayed as you previously on radio mode.



Non-Preset mode



Preset mode

- : You can start radio play.
- : You can pause playback.
- (In Non-Preset mode): Press this button, you can find available radio station.
- (In Preset mode): Press this button, you can listen to the previous/next preset channel.

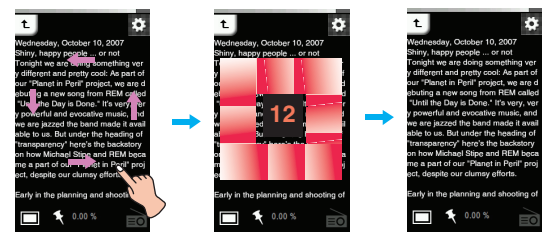
## Volume control

Keep pressing and turn the point you press on LCD clockwise/counterclockwise while listening to the music/radio.

### Volume up



### Volume down



## Using the volume button

Press the volume button on the right side of the player during playback.

### - When you set [Screen display] to [Portrait]

- : Press this button to increase volume.
- : Press this button to decrease volume.

### - When you set [Screen display] to [Landscape]

- : Press this button to decrease volume.
- : Press this button to increase volume.

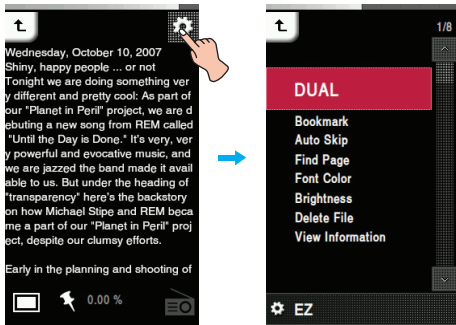


# Viewing text

## EZ menu

You can set the desired function or switch to other modes using the EZ menu.

Press to select the EZ menu while viewing the text.



## DUAL

- **Music** : You can listen to music while viewing the text simultaneously.
  - [ (Moving to EZ menu of the text)] ⇒ [Music] ⇒ [Cancel]/[Play Previous]/[Play Next]/[Back]
  - [Cancel] : Stops the music playback.
  - [Play Previous] : Plays the previous music.
  - [Play Next] : Plays the next music.
  - [Back] : Moves to the music mode.
- **Radio** : You can listen to the radio while viewing the text simultaneously.
  - [ (Moving to EZ menu of the text)] ⇒ [Radio] ⇒ [Cancel]/[Previous Channel]/[Next Channel]/[Back]
  - [Cancel] : Stops the radio reception.
  - [Previous Channel] : Receives the previous channel.
  - [Next Channel] : Receives the next channel.
  - [Back] : Moves to the radio mode.

## Bookmark

You can move to the point you set while playing the text.

- **Set**  
Sets the bookmark.
- **Move**  
Executes the bookmark.
- **Cancel**  
Cancels the bookmark.

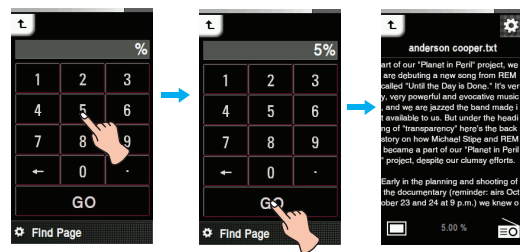
## Auto Skip

Sets an interval for auto text skipping.

You can select [Off], and a value from [12 sec] to [22 sec].

## Find Page

You can move to the desired parts.



## Font color

You can set the text color among White, Gray, Green, Blue, Yellow, Red.

The default color is White.

## Brightness

You can adjust the brightness level from 0 to 9.

The default brightness is 6.

## Delete File

- **Yes** : Deletes the playing file.
- **No** : Cancels the deleting of playing file.

## View Information

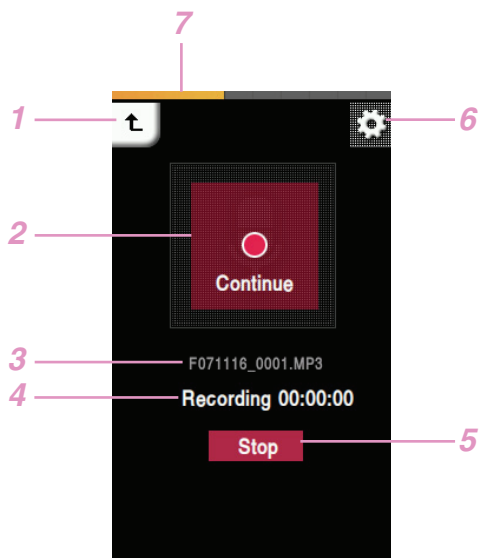
Displays the information of the playing file.  
(File Name, File Size, Setting)





# Recording

## Recording screen



- 1 Moves to the previous menu or home menu.
- 2 Record display (Start/ Pause/ Continue)
- 3 Title of the recording file
- 4 Recording standby/ Recording time
- 5 Recording end
- 6 Moves to the EZ menu.
- 7 Battery status

## How to record

- 1 Press REC button more than 1 second to record while listening to the radio or in other menus.
  - In FM recording: The recording time will be displayed and the recording will start.
  - In voice recording: 1) The player turns into stand-by mode for recording. 2) Press [Start] to voice recording.
- 2 Press [Pause] to pause.
- 3 Press [Stop] to end the recording.
  - Select [Continue] to resume recording.
  - The recorded files will be stored under Record folder as a file named F071116\_xxxx in FM recording or V071116\_xxxx in voice recording(ModeYear Month Date\_Order)
- 4 Refer to [Recorded file] on page 17 to play prerecorded files.

### Note

If the remaining memory space is less than 3MB, the player may not be recorded.

## EZ Menu

You can set the desired function or switch to other modes using the EZ menu.

Press  to select the EZ menu while recording radio/voice.

### Recording Quality

You can set the quality of the recorded file.

- You can set [96kbps], [128kbps], or [192kbps].

### VAD

In case of voice recording, recording will automatically stop upon mute sound and will resume upon reception of the voice signal.

- You can select [On] or [Off].

### View Information

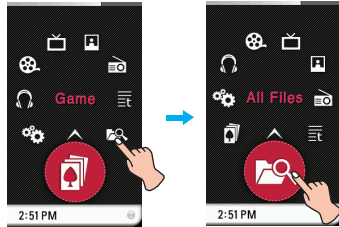
Displays the information of the recording file.  
(Quality, Vad, Setting)



# Checking up all files/Playing games

## All Files

1 Select of the home menu.



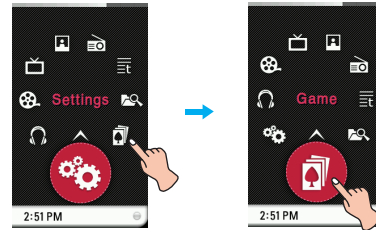
2 You can confirm and play the playable list on each mode.

### Note

- Select a file you want and press , you can delete it.

## Game

1 Select the icon of the home menu.



### [Dynamic HEADING] game

Heading for both side of balls that mission will be succeed.

Do not pile up the over 5 balls in given time. Many kinds of items will appear.

### [PIKKO] game

See the tail of wind, put PIKKO by pressing PIKKO the basket. Chances are just 5 times! You can get the lost chances in every 5 success by one. High score is the most succeed chances.

### [Champion Batter] Game

To gain the mission point of each level, the batter should get to first base.

If you use a pinch hitter of each level, the mission will be easily completed.

Be careful with various ways of pitch and 11 special pitches.

### [Salad World] Game

To escape vegetables, place more than 3 same vegetables, in a line (up, down, right and right) Use magnetic and fog effect items. Fog - the effect will be going on for 6 second. If you click one salad during fog effect, all same vegetables can escape.

### [Burning Skewered Food] Game

Complete skewered food according to order box by operating button related to materials.

2 Press the desired game file.

- For details, see the [HELP] or [Information] menu.



# Advanced setting

## Settings

### Music

#### Play Mode

- Repeat One  
Plays the current file repeatedly.
- Play All  
Plays all music within the selected folder in order.
- Repeat All  
Plays all music within the selected folder repeatedly.
- Random All  
Plays all music within the selected folder randomly.
- Random Repeat All  
Repeats all music within the selected folder randomly.

#### Music Speed

- You can set the playing speed of MP3 files.
- You can select [0.3 times], [0.5 times], [1 time], [1.5 times], and [2 times].
  - The default value is [1 time].
  - MP3 files sampled at less than 32KHz can support only [1 time].

#### Sound Effect

- EQ: You can set the sound effect.  
(AUTO EQ, NORMAL, POP, ROCK, R&B/SOUL, HIPHOP/RAP, JAZZ, CLASSICAL, DANCE, LIVE, USER EQ)
- 3D Sound: You can experience 3D sound effects.  
(Off, CLEAR, 3D EXPANDER, STADIUM, CONCERT HALL, CLUB, ROOM, BASS BOOST, X-LIVE)

#### Fade In

- You can gradually increase the volume to protect ears.
- You can select [On] or [Off].

#### Scroll Speed

- Sets the speed of the file name and ID3 tag information in the music playing mode.
- You can select [Off], [0.5 times], [1 time], [2 times], and [3 times].

#### Search Interval

- You can select the slide show interval.
- You can select [3 sec], [5 sec], [10 sec], or [30 sec].

#### Background setting

- You can select the photo file for music background.
- Album Art : Displays the album jacket during playback.
  - **Album Art**
    - 1) The album image saved with a music file is displayed.
      - Synchronize the file with album information on Windows Media player.
    - 2) If a photo file is saved as the same name as that of ID3 Tag Album of a music file on the same folder, the photo is displayed as an album art.
    - 3) If a photo file is saved as the same name as that of a music file on the same folder, the photo is displayed as an album art.
    - 4) The three cases exist simultaneously, an album art is displayed in the following order [1]-[2]-[3].
  - **User Image**  
Displays the user's desired photo during playback.
  - **Default Image**  
Displays the basic photo during playback.

### Movie

#### Search Speed

- You can set the playing speed of movies files.
- 1 time : Searches at an original speed.
  - 2 times : Searches at 2 times speed.
  - 3 times : Searches at 3 times speed.

#### MXD Engine Effect

- You can show a high-definition image of movie files.
- You can select [On] or [Off].

### DVB-T

#### Region Setting

- You can set the reception area among 17 countries.

#### Electronic Program Guide

- EPG(Electronic Program Guide; specified as EPG hereafter) helps you to see what is currently being shown on the channels you receive. You can set ON or OFF to activate the EPG.

#### Aspect ratio

- You can set the screen ratio between 4:3 or 16:9.

### Photo

#### Slide show

- You can set the slide show to On/Off.
- On : Turns on the slide show.
  - Off: Turns off the slide show.

#### Slide Interval

- You can set the slide show interval to [2 sec], [3 sec], [4 sec], or [5 sec].

### Text

#### Font Color

- You can set the character color in the text mode.
- You can select [White], [Gray], [Green], [Blue], [Yellow], or [Red].

#### Auto Skip

- Sets an interval for auto text skipping.
- You can select [Off], and a value from [12 sec] to [22 sec].

#### Screen display

- You can select screen display between Portrait or Landscape.
- Portrait : Texts are displayed vertically.
  - Landscape: Texts are displayed horizontally.

### Radio

#### Mode

- You can set the reception mode.
- You can select [Auto] or [Mono].

#### Sensitivity Setting

- The higher, the more frequency channels.
- You can select [High], [Standard], or [Low].

#### Region Setting

- You can set the reception area among 17 countries.

#### Reserved Recording

- You can reserve the FM radio recording.
- You can set the frequency for reserved recording.
  - You can set only one reserved recording.
  - Recording can be made for maximum 23 hours and 59 minutes.

#### Radio background

- You can select the photo file for radio background.

- **User Image**  
Displays the user's desired photo during playback.
- **Default Image**  
Displays the basic photo during playback.



## Advanced setting

### Record

#### Recording Quality

You can set the quality of the recorded file.

- You can set [96kbps], [128kbps], or [192kbps].

#### VAD

In case of voice recording, recording will automatically stop upon mute sound and will resume upon reception of the voice signal.

- You can select [On] or [Off].

### Time

#### Sleep Reservation

When the defined time passes, MP3 player will be automatically turned off.

- You can select [Off], [10 min], [30 min], [1 hr], or [2 hr].
- If you set the turning-off reservation, MP3 player will automatically store files and be turned off at the reserved time.
- After MP3 player is turned off at the reserved time, the turning-off reservation will be automatically cancelled.

#### Time System

You can set the current time in 12/24 hour time system.

#### Time Setting

You can set the current time.

- You can set years between 2001 and 2099.
- When downloading files synchronized on windows media player in MTP mode, the time setting of MP3 player will be synchronized with the one of the PC.

#### Time zone

You can set a applicable time zone on the player.

#### Summer time

You can set daylight saving time system to this player's clock system.

- On : Applies the summer time system to this player and then one hour is adjusted forward.
- Off: Deactivates the summer time system.



#### Note

When moving to other regions or countries, you have to set the Time zone and summer time system to be compatible there.

### Display Setting

#### Brightness

You can adjust the brightness level from 0 to 9.

The default brightness is 6.

#### Theme Setting

Sets menu type.

- You can select [Icon type] or [List type].

#### Menu Color

You can set the color of the home menu to [Red]/[Blue].

#### Screen saver

After the defined time passes, the screen saver is activated to protect display screen.

- You can select [On] or [Off].
- When the set time for screen saver activation is the same as or longer than that for Auto Power off, the screen saver is not activated.
- When playing video file and performing photo slide show, the screen saver is not activated.

#### Menu background

You can select the photo file for menu background.

##### • Theme setting

Displays a theme image you selected among Default Theme setting, Leisure, Animal, Artist, Rhythm, Equalizer, and Animal skin.

##### • User image

Displays the user's desired photo during playback.

#### Screen saver background

You can select the photo file for screen saver background.

##### • Default image

Displays the basic photo during playback.

##### • User image

Displays the user's desired photo during playback.

### General

#### Rebuilding

You can search the downloaded files and upgrade the list.

- You can select [Yes] or [No].
- If you select [Yes], the list will be upgraded. If you select [No], MP3 player will return to the general setting screen.
- As updating the list may take time, check the battery status in advance.

#### Initialize Settings

You can initialize the setting of MP3 player.

- You can select [Yes] or [No].
- If you select [Yes], MP3 player is automatically turned off after MP3 player is initialized.
- If you select [No], MP3 player moves to the previous menu.

#### System Info

You can check the product information.

- The entire memory space, the used memory space, remaining memory space, the model name and firmware version are displayed.

#### Language

You can select the language.

- Korean, English, Portuguese, Danish, German, Dutch, French, Italian, Norwegian, Spanish, Swedish, Finnish

#### Power Management

##### • Auto Display Off

If no button is inputted during the given time, the LCD will be automatically turned off.

- You can select [Off], [5 sec], [10 sec], [30 sec], or [60 sec].

##### • Auto Power Off

If no button is selected in the standby mode for playing, the screen will be automatically turned off.

- You can select [Off], [30 sec], [1 min], [5 min], or [10 min].

#### PC Connection Setting

##### • Media Device(MTP) Mode

- The MTP applies the latest technology of Microsoft to support the multimedia devices. It is recognized as a mobile devices and compatible with Windows Media Player10.

##### • Removable Disk(MSC) Mode

- MP3 player will function as a general removable storage in this mode.

#### Format

You can delete all data in the memory and initialize the memory.

- You can select [Yes] or [No].
- If you select [Yes], formatting will be made. If you selects [No], MP3 player will return to the general setup screen.
- Back up the data stored in MP3 player before initializing it.
- Deleted data cannot be recovered.

#### Calibration

You can adjust a focus on LCD.

- Press "+" repeatedly.



## Additional information

### Upgrading firmware automatically

Connect MP3 player to the PC where the LG Media Center is installed to download a new version of firmware.

- Functions only in the Internet-connected PC.
- Back up important data before upgrading, or the data may get lost.

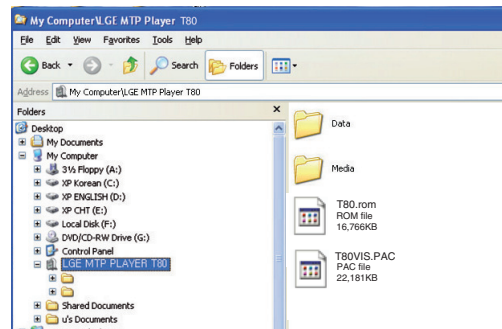
- 1 Connect one end of the USB cable to the USB port of the PC with the LG Media Center installed and the other to the USB port of MP3 player.
- 2 The LG Media Center will compare the firmware versions of MP3 player and the server. If it detects a new firmware version, it asks you whether to upgrade the version.
- 3 Click [OK] to copy new firmware to the MP3 player.
- 4 Upon updating, new version firmware will be copied to the MP3 player.
- 5 To safely remove the device, remove the USB cable. (In MSC mode)
- 6 When "Firmware upgrade?" message is displayed, click the REC.
- 7 The firmware updating progress bar will be displayed. After the upgrade is completed, the power will be automatically turned off.
  - Wait till the player is automatically restarted.
- 8 You can check the firmware version in Home Menu [Settings] of Home Menu ⇒ [General] ⇒ [System Info].

### Upgrading firmware manually

You can upgrade the firmware for addition and change of features of MP3 player and for functional improvement.

Back up important data before upgrading, or the data may get lost.

- 1 Check the model number at the company website, and download the latest version.
  - <http://www.lge.com> ⇒ Support ⇒ Download ⇒ Software (The contents may differ depending on the website.)
- 2 Decompress the downloaded files. Then, T80.rom file will be displayed.
- 3 Connect the USB cable to the MP3 player and the PC.
- 4 Check whether a new drive has been added in the Windows Explorer in the PC.
  - The drive name may differ depending on the OS.
- 5 Select the T80.ROM and T80VIS.PAC files and copy it to the newly added drive.
  - In Windows Media Player 10 version:
    - In MSC mode: Highest root
    - In MTP mode: Data folder
  - In Windows Media Player higher than 10 version: Internal Storage



- 6 To safely remove the device, remove the USB cable.
- 7 When "Firmware upgrade?" message is displayed, click the REC.
- 8 The firmware updating progress bar will be displayed. After the upgrade is completed, the power will be automatically turned off.
  - Wait till the player is automatically restarted.
- 9 You can check the firmware version in Home Menu [Settings] of Home Menu ⇒ [General] ⇒ [System Info].



## Troubleshooting

**Q : MP3 player will not be turned on.**

- A : Check whether the battery is remaining.
- A : Connect the AC adapter and charge the battery.

**Q : The screen is blur.**

- A : Avoid direct sun rays and adjust the brightness.
- A : Check the LCD brightness.

**Q : The button does not function.**

- A : Check whether the Hold feature is active.
- A : Check whether you pressed right button.  
Refer to the page 6 for using touch screen.
- A : Press the reset hole. Refer to the page 15.

**Q : The noise is severe during listening to the radio, and the reception is poor. (FM radio reception is optional.)**

- A : The earphone functions as an antenna.  
Be sure to handle carefully.
- A : Slightly change the directions of MP3 player and the earphones.

**Q : The player can not receive FM broadcasting.**

- A : The bundled earphones operates as an antenna. Stretch the wires not to be entangled while listening FM radio.
- A : Move to other locations where you can receive the reception and enhance its quality.
- A : Check whether you set mute.  
In that case, deactivate mute operation. (Refer to page 34)

**Q : After the files are downloaded, the playlist will not show the newly added files.**

- A : Upgrade the list in Setup menu.
- A : Format the product and download the file.  
- If you format MP3 player, all data in it will get lost.

**Q : DVB-T broadcasting is sometimes interrupted while moving.**

- A : Reception sensitivity may be different depending on signal receiving areas and signal reception may get weak while moving in bus or train.  
Move to other locations where you can receive the reception and enhance its quality.

**Q : Channel search is not operated in DVB-T mode.**

- A : Check whether the region setting is set correctly in [Settings]⇒[DVB-T]⇒[Region Setting].
- A : Extend the antenna completely or slightly change the directions of it.
- A : Move to outside to enhance signal reception if you try to use DMB-T function indoors.

**Q : After the firmware is upgraded, MP3 player is not normally functioning.**

- A : Reset the product (See page 15)
- A : Back up the data and format MP3 player.  
- If you format MP3 player, all data in it will get lost.

**Q : Sometimes, files are not downloaded.**

- A : Check the PC Connection Setting of MP3 player. (See page 10 - 11.)
- A : Check the PC Connection Setting. Some files can be downloaded depending on the PC Connection Setting. All files can be downloaded in MSC mode.

**Q : The PC can not recognize an MP3 Player.**

- A : Check the PC Connection Setting. In the case of Windows 2000, PC Connection Setting should be set to MSC in Setup Menu.
- A : Check if the USB driver on the provided CD is installed.

**Q : AVI/WMV file will not play.**

- A : Only video files transcoded by LG Media Center can be played. Make sure the files to be played are converted by LG Media Center. Refer to the LG Media Center [Help] on how to transcode your files.

**Q : Characters are not shown properly in text files.**

- A : If the text file is encoded in a format that your text file viewer doesn't understand, text data seem to be garbaged or corrupted.
- A : You should convert the text file into Unicode on a PC which supports your language of choice and download it.
- A : Set the characters to the corresponding languages in [Settings] ⇒ [General] ⇒ [Language].

**Q : ID3 TAGs of the music are broken or are not displayed.**

- A : Set the ID3 TAGs to the corresponding languages in [Settings] ⇒ [General] ⇒ [Language].



# Error code

## Error code display



Code Number

When you try to use non-supported files or services, system errors happen, or additional measures are needed in the player, the error codes specified below may be displayed. In that case, please troubleshoot the problems by referring to the corrections as below before visiting service centers.

Code Num	Correction
001	From the <Download> menu on the Homepage, download the newest "ROM" and "VIS.PAC" files, and then upgrade with it. Or you can upgrade the firmware in LG Media Center. [Tools] -> [Firmware update].
002	Reset the player. (Refer to page 15)
003	Contact a LG service center near you.
004	Delete unnecessary files to ensure enough space in the player.
005	Connect the player to PC and delete more than 30MB to ensure enough space in it.
006	Connect the player to PC to delete the files/folders.
007	Download the files again through LG Media Center.
008	Set the desired image as a background again into the player.
009	Set the mode of the player to MTP and synchronize files on Windows Media Player 10 or higher version.
010	Connect the player to PC and format it. (Or activate the format function on setting menu) [Settings - General - Format]
011	Initialize the player. [Settings - General - Initialize Settings]
012	Use the player after having the battery fully charged.
013	The battery is not compatible with the player. Use the confirmed battery.
200	Scrambled channels are not supported in the player.
201	The service is not supported in the player.



## Specifications

Type	Item	Specifications
Memory	Capacity	4GB/8GB
	File system	FAT32
PC	OS for MP3 Player Device	Win2000/XP/VISTA
	OS for LG Media Center	Win2000/XP/VISTA
	Interface	USB 2.0
General specifications	Dimensions	55.4 (W) X 98.5 (H) X 12.9 (D)
	Weight	80.8g (with battery) (Depends on the product model.)
	Operating temperature	0°C + 40°C
Audio	Frequency range	20Hz ~ 20kHz
	Signal-to-noise ratio	90dB
	Channel response	40dB (1kHz)
	Maximum output	18mW+18mW
FM radio (Optional according to model)	Frequency range	87.5~108MHz
	Signal-to-noise ratio	50dB
	Channel response	22dB (1kHz)
	Antenna	Earphones antenna
Playback time	Video	About 5.5 hours
	Audio	About 40 hours (for 128Kbps/44.1KHz EQ normal)
	DVB-T	About 2 hours
Power supply	Battery (Detachable)	Lithium Ion DC 3.7V 1100 mAh Chargeable Battery
Files	Audio	MP3, OGG, WMA, WAV (ADPCM)
	Video	LG AVI (30 frames), LG WMV (30 frames)
	Image viewer	JPG, BMP
	Text viewer	TXT
Display	TFT LCD	3.0" / 260,000 colors

### Note

Some parts of the storage space of the MP3 player are usually used for storing the information that is internally treated. Therefore, the storage capacity that can be actually used may be somewhat smaller than specified in the manual. (The size of the storage space for the internally treated information can be changed for product upgrade without any notice to the end users.)

<http://www.lge.com>

Information related to the product is available at this site.

- By updating the firmware, you can improve the performance of the product.





# Specifications

## Supported file specification

### MP3 Decoder

- MP3 decoding support specification including variable bit rate (VBR)

Bitrate	Mpeg1		
	32KHz	44.1KHz	48KHz
32	OK	OK	OK
40	OK	OK	OK
48	OK	OK	OK
56	OK	OK	OK
64	OK	OK	OK
80	OK	OK	OK
96	OK	OK	OK
112	OK	OK	OK
128	OK	OK	OK
144	OK	OK	OK
160	OK	OK	OK
192	OK	OK	OK
224	OK	OK	OK
256	OK	OK	OK
320	OK	OK	OK

### MP3 Encoder

- 44.1KHz, (128Kbps, 192Kbps) Spec, 22KHz (96Kbps) Spec

### WMA Decoder

- WMA (ASF-audio only) Decode Support

Kbps \ KHz	48	44.1	32	22.05	16	11.025	8
384			O (S)				
320	O (S)	O (S)					
256	O (S)	O (S)					
192	O (S)	O (S)					
160	O (S)	O (S)					
128	O (S)						
96	O (S)						
80	O (S)						
64	O (S)						
48	O (S)	O (S,M)					
40			O (S)				
32	O (M)		O (S)	O (S)			O (M)
22				O (S)			
20			O (M)	O (S,M)	O (S)		
16		O (M)		O (M)	O (S,M)		
12					O (M)		O (S)
10					O (M)	O (M)	
8						O (M)	O (M)
6							O (M)
5							O (M)

- (S): Stereo, (M): Mono

### OGG Decoder

- Q(-1) ~ Q(10) Support

### ADPCM Decoder

- WAV File Format (MS-ADPCM) Decode

