



Touch Slim

OWNER'S MANUAL

MODEL: V25

**Please read this manual carefully before operating your set.
Retain it for future reference.**

Designs and specifications are subject to change without notice for improvement.





IMPORTANT SAFETY INSTRUCTIONS



CAUTION

RISK OF ELECTRIC SHOCK
DO NOT OPEN



CAUTION: TO REDUCE THE RISK
OF ELECTRIC SHOCK
DO NOT REMOVE COVER (OR BACK)
NO USER-SERVICEABLE PARTS INSIDE
REFER SERVICING TO QUALIFIED SERVICE
PERSONNEL.

Warning

- To reduce the risk of fire or electric shock, do not expose this appliance to rain or moisture.

Caution

- The appliance is not intended for use by young children or infirm persons without supervision.
- Young Children should be supervised to ensure that they do not play appliance.
- Use of controls or adjustments or performance of procedures other than those specified herein may result in hazardous radiation exposure.

Industry Canada requirement

- This Class B digital apparatus complies with Canadian ICES-003.
- Cet appareil numérique de la classe B est conforme qa la norme à NMB-003 du Canada.

FCC COMPLIANCE STATEMENT



Note

This equipment has been tested and found to comply with the limits for a Class B digital device, pursuant to Part 15 of FCC Rules. These limits are designed to provide reasonable protection against harmful interference in a residential installation. This equipment generates, uses, and can radiate radio frequency energy and, if not installed and used in accordance with the instructions, may cause harmful interference to radio communications. However, there is no guarantee that interference will not occur in a particular installation. If this equipment does cause harmful interference to radio or television reception, which can be determined by turning the equipment off and on, the user is encouraged to try to correct the interference by one or more of the following measures:

- Reorient or relocate the receiving antenna.
- Increase the separation between the equipment and receiver.
- Connect the equipment into an outlet on a circuit different from that to which the receiver is connected.
- Consult the dealer or an Authorized Service Center for help.

FCC WARNING

This equipment may generate or use radio frequency energy. Changes or modifications to this equipment may cause harmful interference unless the modifications are expressly approved in the instruction manual.

You could lose the authority to operate this equipment if an unauthorized change or modification is made.

- Changes or modifications not expressly approved by the party responsible for compliance could void the user's authority to operate the equipment.
- This MP3 player is for use only with UL listed personal computers that have installation instructions detailing user installation of card cage accessory.



Tested to Comply
with FCC Standards

FOR HOME OR OFFICE USE

Disposal of your old appliance



1. When this crossed-out wheeled bin symbol is attached to a product it means the product is covered by the European Directive 2002/96/EC.
2. All electrical and electronic products should be disposed of separately from the municipal waste stream via designated collection facilities appointed by the government or the local authorities.
3. The correct disposal of your old appliance will help prevent potential negative consequences for the environment and human health.
4. For more detailed information about disposal of your old appliance, please contact your city office, waste disposal service or the shop where you purchased the product.
 - The lithium battery contains lithium and can explode if it is not properly handled or disposed of.
 - Replace only with a battery of the type recommended by LG.
 - Caution: Danger of explosion if battery is incorrectly replaced. Replace only the rechargeable lithium battery with Amperex Technology Ltd. or LG, Part No.(GB-S10-422339-0400) having the cell, 422339. Use of Another Cell May Present a Risk of Fire or Explosion.



This product is manufactured to comply with the
EEC DIRECTIVE 2004/108/EC and 2006/95/EC.



The working life of this product is 7 years
since the date of purchase.



IMPORTANT SAFETY INSTRUCTIONS

CAUTION

PLEASE READ AND OBSERVE ALL WARNINGS AND INSTRUCTIONS IN THIS OWNER MANUAL AND THOSE MARKED ON THE UNIT. RETAIN THIS BOOKLET FOR FUTURE REFERENCE.

This product has been designed and manufactured to assure personal safety. Improper use can result in electric shock or fire hazard. The safeguards incorporated in this unit will protect you if you observe the following procedures for installation, use, and servicing. This unit does not contain any parts that can be repaired by the user.

DO NOT REMOVE THE CABINET COVER, OR YOU MAY BE EXPOSED TO DANGEROUS VOLTAGE. REFER SERVICING TO QUALIFIED SERVICE PERSONNEL ONLY.

1. Read these instructions.
 - All these safety and operating instructions should be read before the product is operated.
2. Keep these instructions.
 - The safety, operating and use instructions should be retained for future reference.
3. Heed all warnings.
 - All warnings on the product and in the operating instructions should be adhered to.
4. Follow all instructions.
 - All operating and use instructions should be followed.
5. Do not use this apparatus near water
 - For example: near a bath tub, wash bowl, kitchen sink, laundry tub, in a wet basement; or near a swimming pool; and like.
6. Clean only with dry cloth.
 - Unplug this product from the wall outlet before cleaning. Do not use liquid cleaners.
7. Do not block any ventilation openings. Install in accordance with the manufacturer's instructions.
 - Slots and openings in the cabinet are provided for ventilation and to ensure reliable operation of the product and to protect it from overheating.
 - The openings should never be blocked by placing the product on a bed, sofa, rug or other similar surface. This product should not be placed in a built-in installation ventilation is provided or the manufacturer's instructions have been adhered to.
 - Important Safety Instructions

8. Do not install near any heat sources such as radiators, heat registers, stoves, or other apparatus (including amplifiers) that produce heat.
9. Do not defeat the safety purpose of the polarized or grounding-type plug. A polarized plug has two blades with one wider than the other. A grounding type plug has two blades and a third grounding prong. The wide blade or the third prong are provided for your safety.
 - If the provided plug does not fit into your outlet, consult an electrician for replacement of the obsolete outlet.
10. Protect the power cord from being walked on or pinched particularly at plugs, convenience receptacles, and the point where they exit from the apparatus.
11. Only use attachments/accessories specified by the manufacturer.
12. Use only with the cart, stand, tripod, bracket, or table specified by the manufacturer, or sold with apparatus.
 - When a cart is used, use caution when moving the cart/apparatus combination to avoid injury from tip over.



13. Unplug this apparatus during lightning storms or when unused for long periods of time.
14. Refer all servicing to qualified service personnel.

Servicing is required when the apparatus has been damaged in any way, such as power supply cord or plug is damaged, liquid has been spilled or objects have fallen into the apparatus, the apparatus has been exposed to rain or moisture, does not operate normally, or has been dropped.



Table of Contents

Safety tips	5
General information of MP3 player	6
Name of each component	7
Installing software	8-9
Before installing the operating program	8
About LG Media Center	8
Installing LG Media Center	8-9
Installation of the Adobe Acrobat Reader	9
View the manual	9
Connecting to the PC	10-13
To connect the USB cable	10
To disconnect the USB cable	10
To download files-MTP mode	11-12
To download files - MSC mode	12
To download files-LG Media Center	13
Converting video files	14
Charging the MP3 player	15
Basic operation	16
To Turn on/off the power	16
Lock feature	16
Reset feature	16
Home menu screen	16
General operations of Home menu	16
Volume control	16
Playing music	17-18
Music playing screen	17
Music menu	17
To play the music files	18
To pause	18
Speed search	18
Skipping to the next or previous music file	18
EZ menu	18
Playing video	19
Video playing screen	19
To play video files	19
To pause	19
Skipping to the next or previous video file	19
Speed search	19
Volume control	19
EZ menu	19
Viewing photo	20
To view the photo files	20
To view the previous or next photo	20
EZ menu	20
FM radio reception(Optional)	21-22
FM radio reception screen	21
Setting preset channels	21
Set/Cancel mute	21
Listening to the FM the radio	21
Scanning the FM radio stations	21
Recording the FM radio broadcasting	21
Listening to the recorded file	21
EZ menu	22
All files	22
Voice recording	22
Listening to the recorded file	22
EZ menu	22
Advanced setting	23
Settings menu list	23
Music	23
Photo	23
Time	23
Display setting	23
Power management	23
General	23
Additional information	24-25
Running Firmware updater	24
Running recovery	25
Firmware update	25
Troubleshooting	26
Specifications	27-28
Supported file specification	28



Safety tips

Please follow the safety tips closely to reduce the risk of accidents or damage to equipment. Safety instructions are divided into Warning and Caution. Keep this manual in an easily accessible place.



Warning

Not following the safety tips may result in death or serious injury.



Warning



Do not use this product while driving.



Do not operate the Player near water, dust, or soot.



Do not use the Player and connect with the cable or AC adapter when the rain is pouring down and thunderstorms produce lightning.



Listening to the music loud for a long time may compromise your hearing ability.

Do not use earphones while riding bicycles and motor cycles or driving a car.

Check the volume before using a headphone. If headphones are used at high volume for more than 30 minutes, it may result in noise induced hearing damage.

Do not use the earphones loud while walking, especially on the crosswalks.

Stop using earphones or lower the volume when you have ringing in your ears.

Careful that headphones or earphones do not slip into the subway doors or automatic doors.



Caution

Not following the safety tips may result in a light accident or damage.



Caution



Do not drop an object or give shock on the product.



Do not place the player near a magnet or within the magnetic field.



Clean the Player with soft cloth.



Keep this product away from heat.



Do not insert a metallic object (coins or hair pins, etc.) or flammable objects in the product. Do not drop such objects on the product either.



Do not disassemble, repair, or remodel the product.



Note that the player may malfunction in an electrostatic environment.



Do not place an object on the product.



Back up important data. (Note that the manufacturer is not responsible for the loss of major data caused by the user's mistake.)



Do not disconnect the USB cable. Do not turn off the player while the USB cable is connected. Otherwise, the data may get lost.



General information of MP3 player

Features

Portable Data Storage

Easy storage and transfer of any file type.

USB 1.1 and 2.0

You can download files at a fast speed. (USB 2.0 high speed)

Touch pad

You can use the menus and functions of MP3 player by tapping the touch pad.

Brilliant 1.77" Color OLED

Photos and video are reproduced in vivid detail on the highly portable 260,000 color OLED.

FM Reception(Optional)

With auto frequency selection feature, you can conveniently listen to the FM radio broadcasting.

Voice Recording

With the built-in microphone, you can record your voice and FM radio broadcasting anywhere.

Photo Viewer

Store and display photos on the vivid display for entertaining slide shows.

File Format Flexibility

- Music: MP3, OGG, WMA, WAV
- Video: LG AVI (The player can be only played the video files downloaded via LG Media Center.)
- Photo: JPG, BMP, GIF

Media Device(MTP) Mode / Removable Disk(MSC) Mode

What is the MTP mode?

MTP stands for the Media Transfer Protocol. MTP applies the latest technology of Microsoft to support the multimedia devices.

What is the MSC mode?

The MSC stands for the Mass Storage Class. The device in the MSC mode functions as if the portable memory.

Converting video file

MP3 player can be only played the video files downloaded via LG Media Center.

For details about download, see the Help menu [Converting video file] on LG Media Center.

PC Connection

On Windows 98SE/ME version, the player is connected and functions only in MSC mode. ; On Windows 2000/XP/Vista is connected and functions in both MTP and MSC mode.

Media Device(MTP) Mode

- You should download music files via LG Media Center or Windows Media Player 10 or higher.
- You should download music, video and photo files via LG Media Center.
- You can copy data files to the Data folder. (You can't see the data folder in your MP3 player.)
- If the Windows OS does not support the MTP, the player will function in the MSC mode.

Removable Disk(MSC) Mode

You can copy the Media file to the Removal Disc. (But you should download video files via LG Media Center.)

Supplying Power via USB

- If the battery status is low when connecting MP3 player to your PC with USB cable, MP3 player may not be connected for a few minutes.
- If your PC is suspended, MP3 player is also suspended.

Package contents



V25



USB cable



Software CD



Earphones

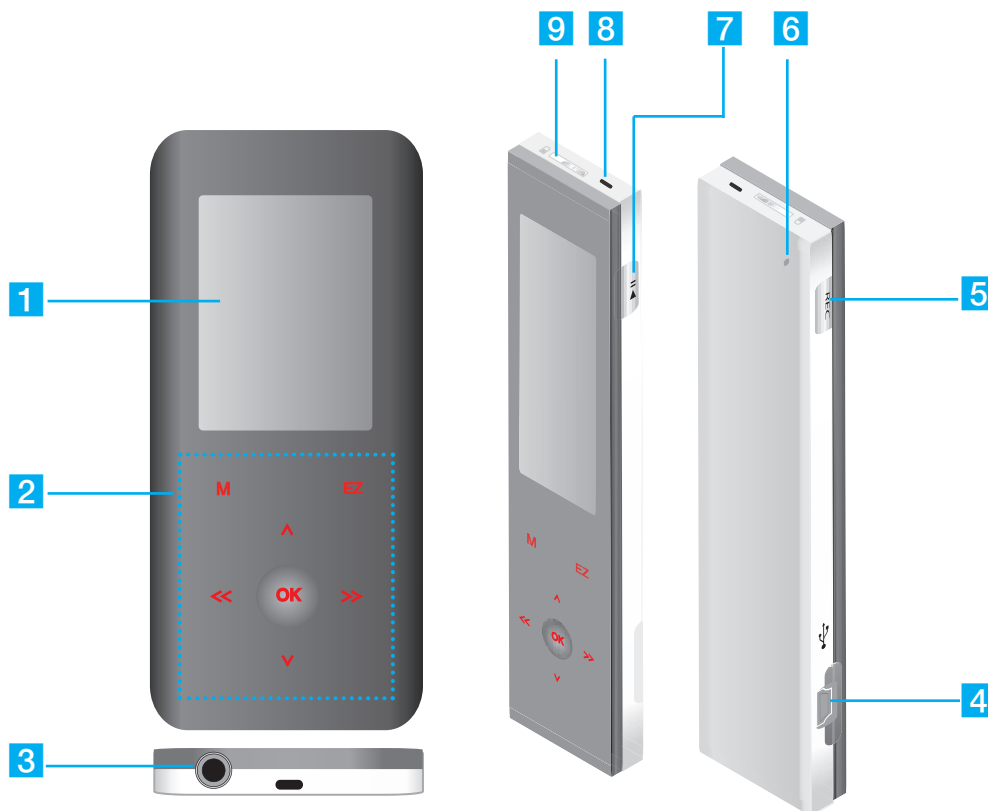


Quick Setup Guide

- The images inserted herein are examples to make users understand the more easily and may be little bit different from the real product.
- The contents of the product are subject to change without prior notice for functional improvement.



Name of each component



1 Display screen

2 (*Touch pad)

- **M**: Moves to Menu
- **EZ** : Takes a shortcut for ez menu
- **OK**: Confirms selected menus
- **V/A**: Adjusts volume in music/radio mode
Searches menu lists/files/channels
- **<< / >>** : Operates as REW/FF button
Adjusts volume in movie mode

3 Earphone jack

4 USB port

5 Record (REC) button

6 RESET hole

7 • Power on/off
• Play/Pause (▶||)

8 Microphone hole

9 Hold switch (🔒)

* Precautions in using the touch pad

- Do not tap the touch pad hard to make it work.
 - If you apply too much strength, it can damage the sensor of the touch pad.
- Do not tap on the touch pad with your fingers unclean or gloves on.
 - Otherwise, the selected function may not operate in any way. Use it with bare hands lightly.
- Be careful not to press any conductive material such as metallic object on the touch pad.
 - Otherwise, it can cause malfunctions.



Installing software

Before installing the operating program

Check the specifications of your PC before using the Player.

Minimum system requirements

- CD-ROM Drive
- Pentium III or higher level CPU / 128MB or larger memory
- 300MB or larger hard disc space, 800 X 600 mode
- Hi-color (16 bit) or higher level video card, Sound card

Operating environment

- The MTP mode is applied to the PC equipped with Windows XP (SP1) or higher-version OS or the Windows Media Player 10/11. To the lower-version OS, the MSC mode is applied.

Windows Media Player 10/11

- You can download the file using Synchronize with Windows Media Player 10/11 menu.
- For more information, see the Help menu of Windows Media Player 10/11.

LG Media Center

- Windows 2000/XP/Vista
- Windows Media Player 10/11/ Internet Explorer 6.0
- Windows Media Player or Internet Explorer will be automatically installed during installation of the LG Media Center. Internet connection must be connected in order to install Internet Explorer.

About LG Media Center

The LG Media Center program is an integrated data management program developed for users to more conveniently use the MP3 player.

Features of the LG Media Center

You can efficiently manage music, video, and photo files through the Media Library rule and download them to the MP3 player.

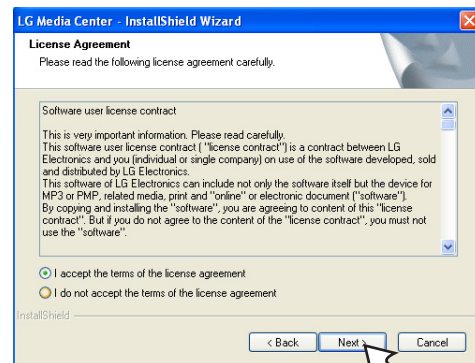
Installing LG Media Center

1 Insert the operation program CD into the CD-ROM.

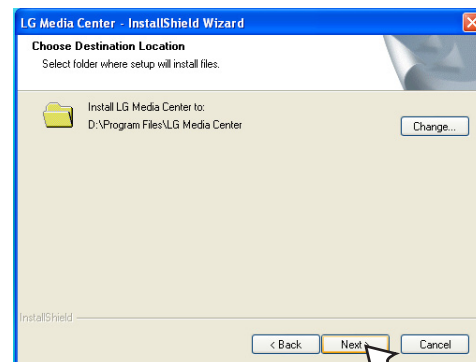
2 Select [LG Media Center].



3 Read the License Agreement. Select the check box and click [Next].



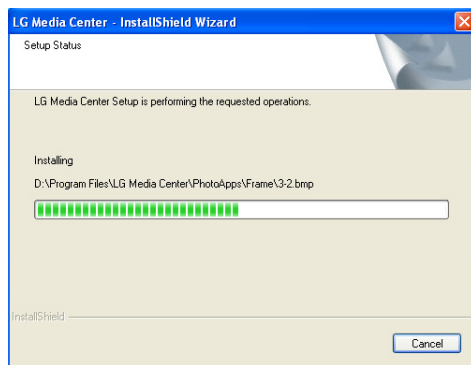
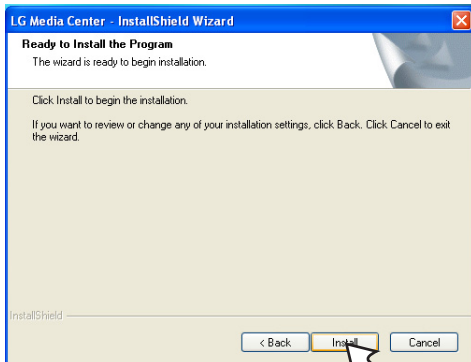
4 Select the installation path and click [Next].



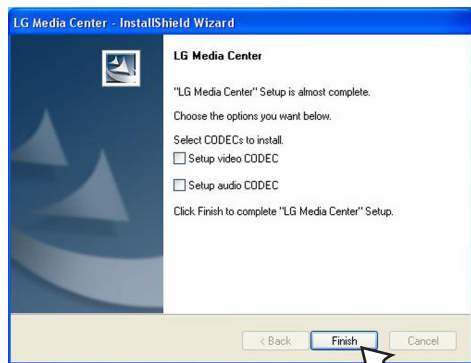


Installing software

- 5 Click [Install] to start installation.



- 6 After finishing the installation, click [Finish].



- You can install CODEC if it is not installed on PC.

- 7 Click [Start] ⇒ [All Programs] ⇒ [LG Media Center] to start the program.



Note

- During installation of the LG Media Center, you can install the Windows Media Player and the Internet Explorer for an operating environment.
- The pop up image may be different depending on the OS of PC.

Installation of the Adobe Acrobat Reader

- 1 Insert the operation program CD into the CD-ROM.
2 Select [Adobe Acrobat Reader].



- 3 Follow the displayed instructions.

View the manual

- 1 Insert the operation program CD into the CD-ROM.
2 Select [Manual].



- 3 You can see the manual.



Note

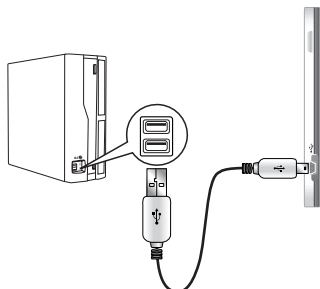
You must install the Adobe Acrobat Reader to read the manual.



Connecting to the PC

To connect the USB cable

- 1 Connect one end of the USB cable to the USB port of the PC and the other to the USB port of the player.
 - Check whether both ends are correctly plugged in.



- 2 If the USB device is normally recognized after the cable is connected, the following will be displayed.
 - The software version is displayed on screen.



- 3 In case of a correct connection, an icon will be displayed on the task bar of the PC.
 - The icon shapes on the task bar may differ depending on the OS of the PC.

To disconnect the USB Cable

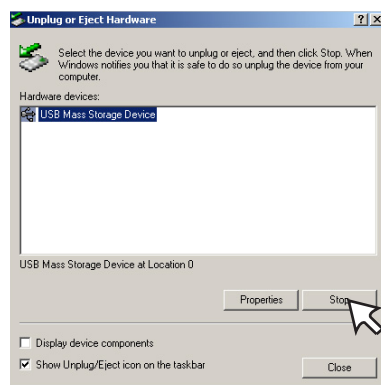
Media Device(MTP) mode

Disconnect the USB cable from the PC after checking whether a file is transferring.
If the file is transferring, disconnect it after the transfer is completed.

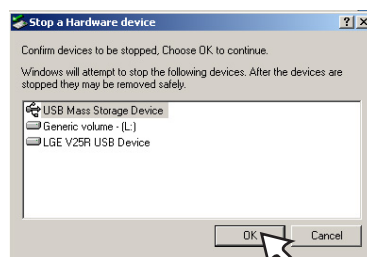
Removable Disk(MSC) mode

This feature is to safely remove MP3 player from the PC after uploading or downloading the files.

- 1 Double-click on the Remove Hardware icon on the task bar of the PC.
- 2 Click [Stop] when the window appears.



- 3 Click [OK].



- 4 After a message that the large-capacity USB storage can be safely removed is displayed, remove MP3 player from the PC.
 - If the USB cable is disconnected while storing or deleting the file, the data may get lost.



Connecting to the PC

To download files - MTP mode

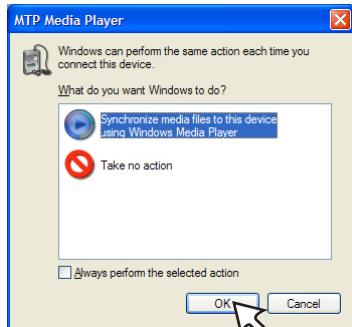
MP3 player will be recognized as a mobile device, not a mass storage, and will interwork with the Windows Media Player 10/11.

- 1 Connect one end of the USB cable to the USB port of the PC and the other to the USB port of MP3 player.

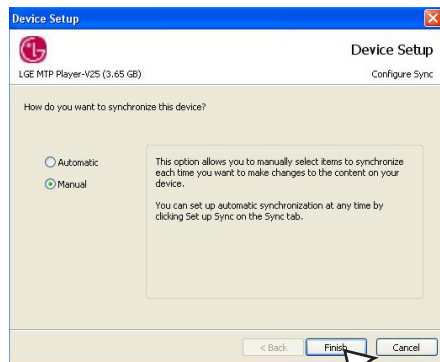
- Check whether both ends of the cable are correctly plugged in.

- 2 The window "MTP Media Player" appears in the PC.

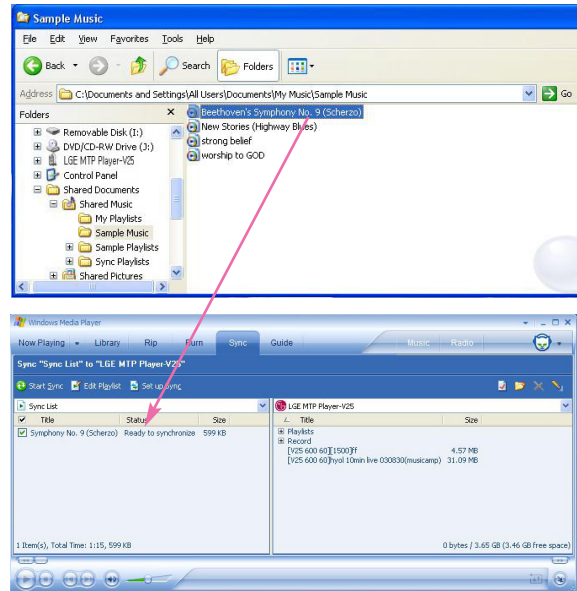
1) a. "Synchronize media files to this device" ⇒ "OK"



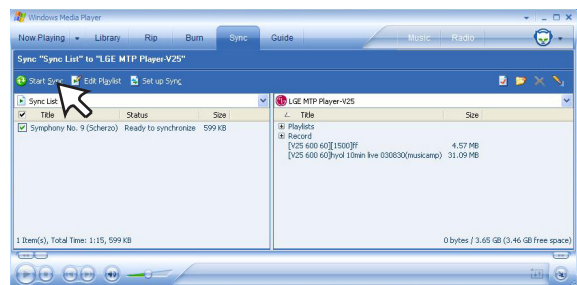
b. "Manual" ⇒ "Finish"



c. Drag the synchronizing files to the left window.



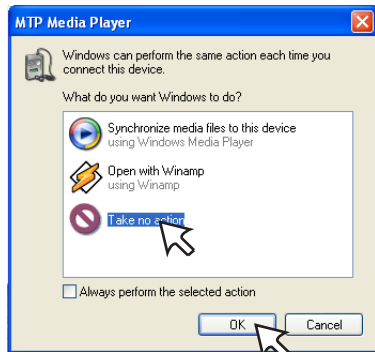
d. Click "Start Sync".



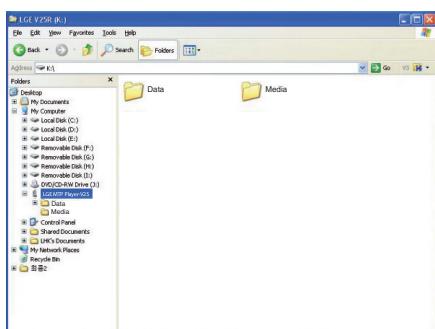


Connecting to the PC

2) a. "Take no action" ⇔ "OK"

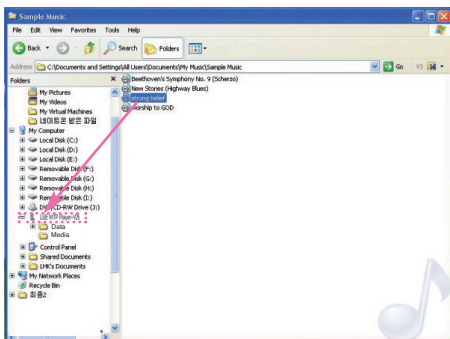


b. Click "LGE MTP Player-V25".



- Data folder: You can download or upload all data files.
- Media folder: You can download only the file that Windows Media Player 10 supports.

3 Drag the file to copy to the portable media drive.

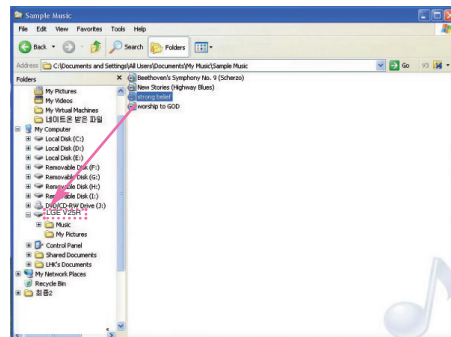


Note

- When you cannot check the downloaded files on Media folder, download it to the Data folder again.
- When you connect the device with Windows Media Player 10 or higher version, you can download files directly to the device. That is, lower folders below the device are not separated to Data and Media on Window Media Player 10 or higher.

To download files - MSC mode

- 1 Connect one end of the USB cable to the USB port of the PC and the other to the USB port of MP3 player.
 - Check whether both ends of the cable are correctly plugged in.
- 2 Check whether a new drive has been added in the Windows Explorer in the PC.
 - The drive name may differ depending on the OS.
- 3 Drag the file to copy to the removable disc drive.



- Disconnecting the USB cable while the file is being copied may cause malfunction of MP3 player.
- MP3 player will be charged when connected to the PC through the USB cable.
- Download video files from LG Media Center.
- Download the JANUS DRM-applied files through the Windows Media Player 10 or higher, or LG Media Center (MTP Mode only).



Connecting to the PC

To download files - LG Media Center

You can download from MP3 player the files you want via LG Media Center.

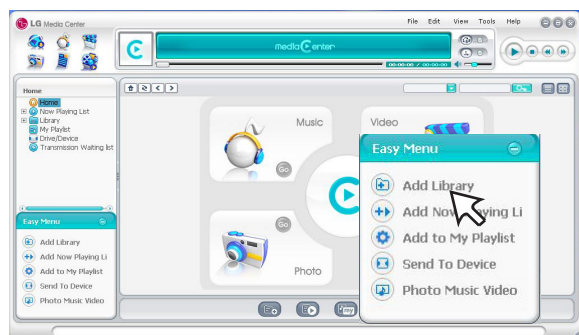
For details, see the Help menu on LG Media Center.

- You can check the downloaded files in the Music, Video, Photo, or Document folder.
- OGG files only are supported in MSC mode.

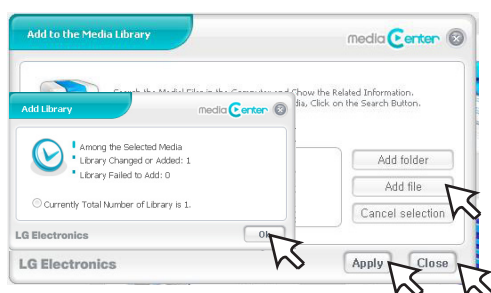
1 Connect one end of the USB cable to the USB port of the PC and the other to the USB port of MP3 player.

- Check whether both ends of the cable are correctly plugged in.

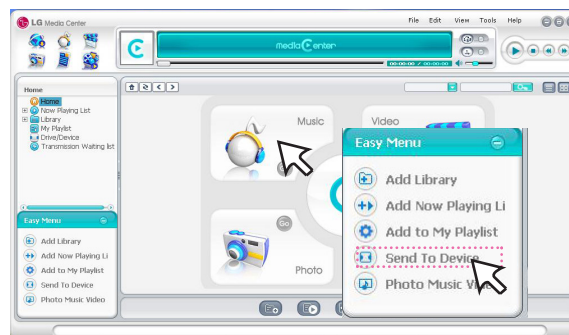
2 Execute the LG Media Center and then click [Add Library].



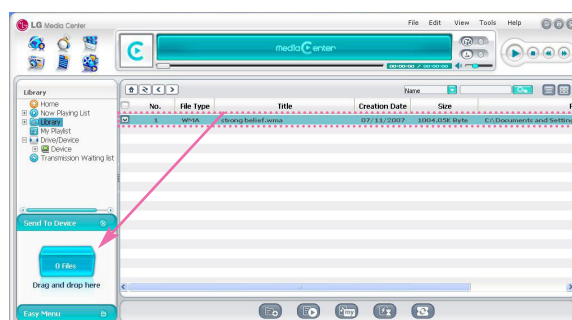
3 [Add file/folder] ⇒ Selecting the downing file (Ex: Music file) ⇒ [Apply] ⇒ [OK] ⇒ [Close]



4 [Music] ⇒ [Send to Device]



5 Drag the files to the [Send to Device].

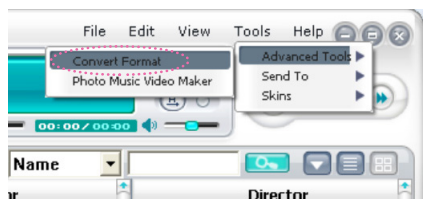




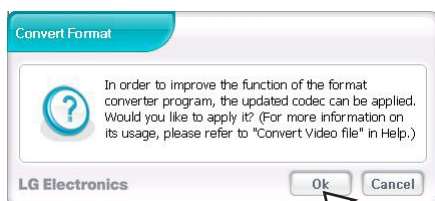
Converting video files

MP3 player can only play the video files downloaded via LG Media Center.
For details about download, see the Help menu [Converting video file] on LG Media Center.

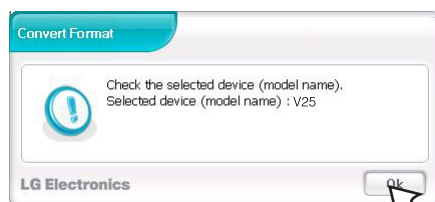
- 1 Execute the LG Media Center.
- 2 Selecting [Tools] ⇒ [Advanced Tools] ⇒ [Convert Format].



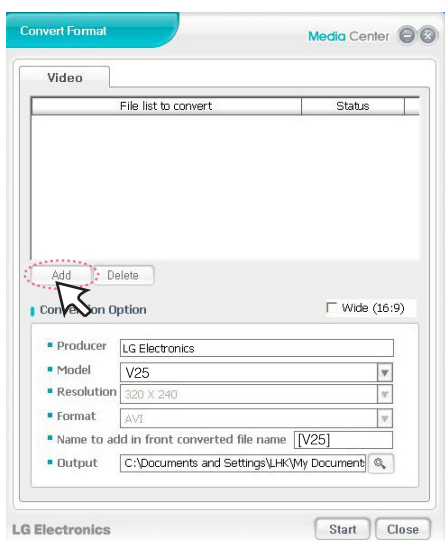
- 3 In case that PlayDec(codec for converting) is not installed or the latest version, the pop-up window appears as below. Press [Ok] to move to the site you can download the updated Play-Dec version.



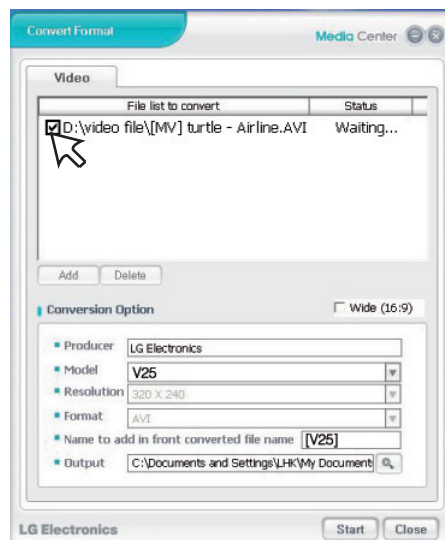
- 4 Download and install the latest updated PlayDec version.
- 5 Click [Ok].



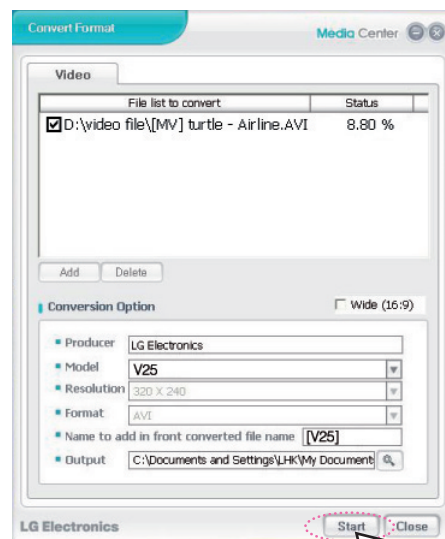
- 6 Click [Add] to select a video file you want to convert.



- 7 Check the video file and then select the Model, Resolution, and Output in [Convert Format] menu.



- 8 Click [Start], the selected video file start converting.



- After converting, check the video file where the file is.
- For details, see the Help menu on LG Media Center.



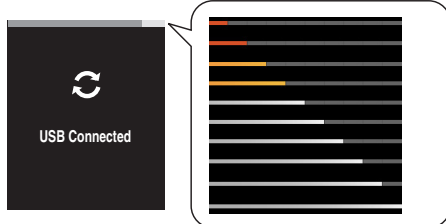
Charging the MP3 player

USB cable

MP3 player will be also automatically charged when connecting the PC and MP3 player with USB cable.

- On the display of MP3 player, the charging status will be displayed as follows: (Charging time : More than 2 hours)

Charging status



Note

- MP3 player may be completely discharged first time you purchase the product. Charge the battery first.
- Charging time may vary according to PC system requirements or operating environment. If your PC is suspended, MP3 player is not charged.
- Do not charge MP3 player for longer than 12 hours. Overcharge and overdischarge may shorten the battery life.
- After checking the state of a remaining battery of note book, connect the USB cable and charge it.
- Do not charge it when the remaining battery of the note book is not enough.
- If you transfer files on charging, the charging time will be extended.
- Charge the battery in a place with a normal temperature.



Basic operation

To Turn on/off the power

Press and hold ►|| for about 2 seconds until the player is turned on.
Press and hold ►|| for about 2 seconds again to turn off the player.
- Downloading files in the MTP/MSC mode may take time for rebuilding depending on the number of files.



Power On







Power Off

Note

In case the available space of the player is smaller than 10 MB after downloading files into the player, you cannot turn it on. Remove files to ensure enough space in it.

Lock feature

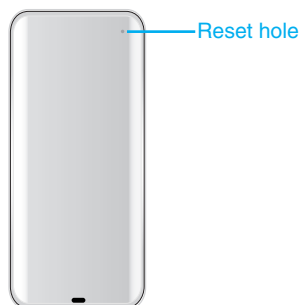
This feature locks the player to prevent it from operating when you accidentally press a button.

- 1 Push the Hold switch  in the direction of the  to lock MP3 player.
 - Upon locked status,  will be displayed on screen.
 - Upon pressing of each button,  will appear for two seconds and disappear.
- 2 Push the Hold switch  in the opposite direction of the  button to unlock the player.

Reset feature

This feature is to reset the player if the player is not operated normally.

- 1 Press the RESET hole with pointed object like a sharp pencil when the player is suspended.

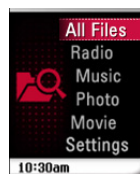


- 2 After the power is turned off, press and hold ►|| for about two seconds. Then, the power will be turned on.
 - Reset function initializes setting values.

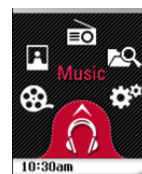
Home menu screen

You can operate various features by using the Home menu.

* Home menu screen varies according to product models (See on page 27)



List type



Wheel type

- 1 Music: Plays the music files.
- 2 Movie: Plays the movie files.
- 3 Photo: Plays the image files.
- 4 Radio: Receives and records FM broadcasting.
(Optional according to models)
- 5 Record: Records the voice.
(Optional: According to models, it may not be displayed.)
- 6 Settings: Sets the operating environment of the player.
- 7 All Files: Displays the playable total list.

General operations of Home menu

- 1 Press and hold MENU button for about 2 seconds to display the Home menu.
- 2 Press << / >> to select the desired menu.
- 3 Press OK to enter submenu.
- 4 Press M(MENU) to return to the previous menu.

Volume control

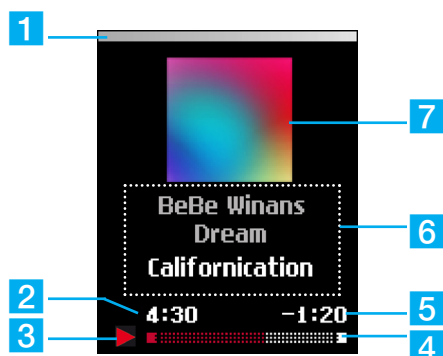
Press V/Λ to control the volume.

- The volume level can be adjusted by 30 steps. (MIN, 1 - 29, MAX)
- If you press V/Λ, the volume levels will decrease or increase by 1 step.
- The default volume is 15.
- To protect hearing, the maximum volume is set as 21 when you turn on the player.



Playing music

Music playing screen

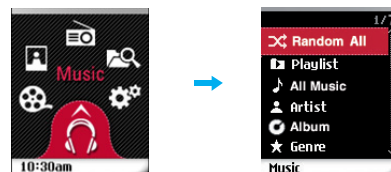


- 1 Battery status
- 2 Playback time
- 3 Play/Pause display image
- 4 Playing time bar
- 5 Remaining time
- 6 Music information display (Album, Artist, Title)
- 7 Playback image (Album art)

Tip

- The playback image is displayed as an album art of a currently playing music file when you download the music file via Windows Media Player 10/11.
- Supported album art - ID3 Tag

Music menu



Random All

Plays the music file randomly.

- When you set [Random All] during operation, the play mode is changing to [Random All].

Play list

• My Playlist

You can check the music files you already selected and added from each music menu.

- 1 Select the music you want to add on the [My Playlist] from the music menu list and then press **EZ**.
 - changes to and it is added in [My Playlist].
 - It can add one at a time.
 - You can confirm and play the added music in [My Playlist].
- 2 Press **EZ** again to delete an added music in [My Playlist].
 - Press **EZ** for longer than 2 seconds after selecting an added file to delete all of the music files added in [My Playlist].
 - icon changes to .
 - When the list is updated, the my playlist will be automatically disabled.

• PC Playlist :

You can play the MP3 player automatically the playlist created in the WMP 10/11 (Windows Media Player 10/11) or the LG Media Center through the Auto Sync mode.

- When the playlist and corresponding files are unchecked in the Auto Sync mode, music will be deleted in the MP3 player. It is recommended to keep all Music files always checked.

All Music

Displays the total music.

Artist

Plays the music by artist.

Album

Plays the music by album.

Genre

Classifies and plays music by genre.

Recorded File

Plays the radio recording file (Optional) or voice recording file.



Playing music

To play the music files

- 1 Move to the Home menu, and press << / >> to select [Music] menu.



- 2 Press **OK** to enter the submenu.
- 3 Press **V/Λ** to select a desired menu and **OK** to confirm.
- 4 Press **V/Λ** to select a music file.
- 5 Press **OK** to play.

Note

You can play other music file on the music file list while playing a music.

1. Press **M(MENU)** during playback.
 - The music file list appears.
2. Press **V/Λ** to select the music file. And then press **OK** to play the selected file.
 - Press and hold **M(MENU)** for 2 seconds to display home menu.

Tip

- By pressing **▶||**, you can check the currently playing music file or play the even last played music file. In Home or in other submenu list.

To pause

- 1 Press **▶||** during playback.
- 2 Press **▶||** again to resume playback.

Speed search

- 1 Press << for longer than 2 seconds, and you can jump to the former part of the currently playing music file during playback.
- 2 Press >> for longer than 2 seconds, and you can jump to the latter part of the currently playing music file during playback.
- 3 If you skip to the beginning/end of the current file with << / >>, the previous or next file will be played.

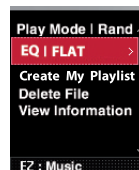
Skipping to the next or previous music file

- 1 In play/pause state, press >> briefly to skip to the next music file.
- 2 In play/pause state, press <<, the music will go back to the previous music file if the music is playing within 5 seconds; and the music will restart playing if the music is playing after 5 seconds.

EZ menu

You can set the desired function or switch to the other mode using EZ menu.

- 1 Press **EZ** to display EZ menu screen while playing or pausing.



- 2 Press **V/Λ** to move to the desired item.
- 3 Press **OK** to move to the submenu.
- 4 Press **OK** once to change the setting.
- 5 Press **EZ** to exit the EZ menu.

Play Mode

You can select the play mode you want.

- [Repeat One]: Plays the current file repeatedly.
- [Play All]: Plays all music within the selected folder in order.
- [Repeat All]: Plays all music within the selected folder repeatedly.
- [Random All]: Plays all music within the selected folder randomly.
- [Random Repeat All]: Repeats all music within the selected folder randomly.

EQ

You can set the sound effect.

- Auto EQ, FLAT, XTS-Pro, POP, ROCK, R&B/SOUL, HIPHOP/RAP, JAZZ, CLASSICAL, DANCE, LIVE

Create/Delete My Playlist

- When a currently playing music file is not added in Playlist, "Create My Playlist" is displayed.
- When a currently playing music file is added in Playlist, "Delete My Playlist" is displayed.

Delete File

You can delete a currently playing file.

- 1 Select [Delete File].
- 2 Select [Yes] or [Cancel] when the message "Delete file?".

View Information

- You can check bitrate, file size, sampling frequency, Codec, and the settings of Auto Power OFF and Sleep Mode.



Playing video

Video playing screen

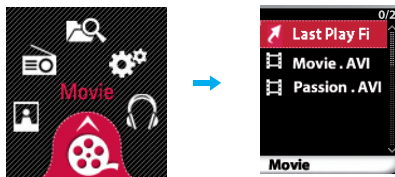


- 1 Playing screen
- 2 Playback time
- 3 Playing time bar
- 4 Remaining time

To play video files

MP3 player can be only played the video files downloaded via LG Media Center. For details about downloading, see [Converting video file] of Help menu on LG Media Center.

- 1 Move to the Home menu, and press << / >> to select [Movie] menu.
- 2 Press **OK** to enter the [Movie] menu.
- 3 Press **V/Λ** to select the video file.



- The list is displayed on screen.
 - If there is no list, "No file" appears on screen.
 - If you select [Last Played File], the last played file will be played.
- 4 Press **OK** to play.
 - The movie file is played.
 - The movie file will be displayed on the horizontal screen.
 - 5 Enter to the movie list screen if **M(MENU)** is pressed while playing the video file.
 - Press and hold **M(MENU)** for two seconds to enter home menu.

To pause

- 1 To pause, press **▶||** once.
- 2 Press **▶||** again to resume playing.

Skipping to the next or previous video file

- Press **<** to skip to the previous file.
- Press **>** to skip to the next file.
- If you press **<** after 5 seconds of playing time, the current video file will be played from the beginning.

Speed search

Press and hold **< / >** for more than two seconds while playing video file.

- The file will start playing as soon as you stops pressing the button.
- It moves to the next video file in the ending point but does not move to the previous video file in the beginning point.

Volume control

Press **▲** or **▼** to control the volume.

- The volume level can be adjusted by 30 steps. (MIN, 1 - 29, MAX)
- If you press **▲** or **▼**, the volume levels will decrease or increase by 1 step.

EZ menu

You can set the desired function or switch to the other mode using EZ menu.

- 1 Press **EZ** to display EZ menu screen while playing or pausing.



- 2 Press **V/Λ** to move to the desired item.
- 3 Press **OK** to move to the submenu.
- 4 Press **OK** once to change the setting and press it once more.
- 5 Press **EZ** to exit the EZ menu.

Delete files

You can delete a currently playing file.

- 1 Select [Delete File].
- 2 Select [Yes] or [Cancel] when the message "Delete file?".

View Information

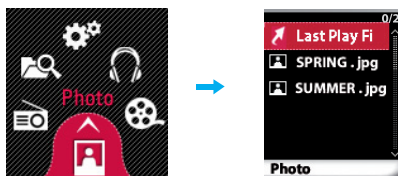
- You can check the information of file name, file size, play time, and the settings of Auto Power OFF and Sleep Mode.



Viewing photo

To view the photo files

- 1 Move to the Home menu, and press << / >> to select [Photo] menu.
- 2 Press **OK** to enter the [Photo] menu.
- 3 Press **V/Λ** to select the photo file.



- The list is displayed on screen.
- If there is no list, "No file" appears on screen.

- 4 Press **OK** to play.
 - The photo file appears on screen.
 - If you select [Last Played File], the last displayed file will be played.
 - Horizontal size is longer than vertical size of a photo file will be displayed on the horizontal screen.
 - Enter to the photo list screen if **M(MENU)** is pressed while viewing the photo.
 - Press and hold **M(MENU)** for two seconds to enter home menu.
 - Large-sized photos may not be opened or played.
 - In case of the JPG file downloaded from the LG Media Center, all photos can be viewed regardless of the size. It is recommended to download JPG files from the LG Media Center for quicker display.

To view the previous or next photo

- Press << to skip to the previous photo file.
- Press >> to skip to the next photo file.



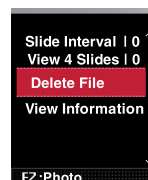
Tip

- Just after playing a music or listening to radio and then entering photo mode with the music playing or radio broadcasting, you can view photos while listening to music or radio.
- In the case, you can adjust volume by pressing **V/Λ**.

EZ menu

You can set the desired function or switch to the other mode using EZ menu.

- 1 Press **EZ** to display EZ menu screen while playing or pausing.



- 2 Press **V/Λ** to move to the desired item.
- 3 Press **OK** to move to the submenu.
- 4 Press **OK** once to change the setting and press it once more.
- 5 Press **EZ** to exit the EZ menu.

Slide interval

You can set the slide show interval.

- You can select [Off], [2 sec], [3 sec], [4 sec], or [5 sec].



Tip

- When you set slide interval
- 1 Press **▶||** once, you can pause the slide show.
- 2 Press it again, you can make the slide show activate.

View 4 Slides

You can show 4 slides on one screen.

- You can select [On] or [Off].

Delete File

You can delete a currently playing file.

- 1 Select [Delete File].
- 2 Select [Yes] or [Cancel] when the message "Delete file?".

View Information

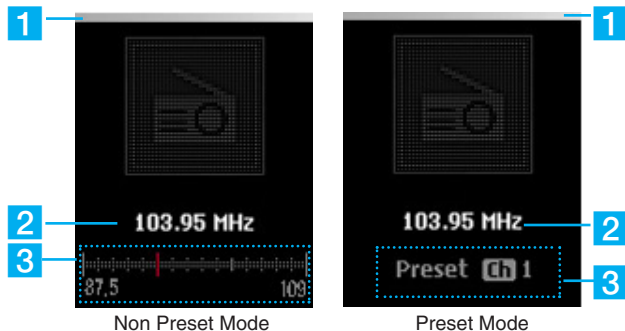
- You can check the information of file name, file size, and the settings of Auto Power OFF and Sleep Mode.



FM radio reception(Optional)

FM radio reception screen

The images inserted in the FM radio reception section are just examples to help you understand this function more easily.

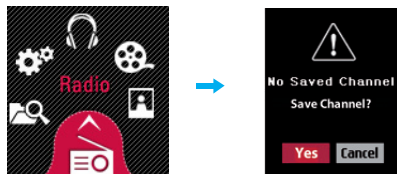


- 1 Battery status
- 2 FM radio frequency display
- 3 FM radio frequency display bar

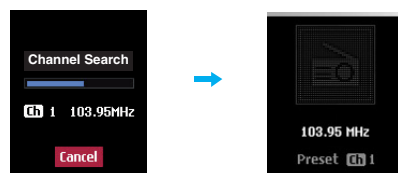
- 1 Battery status
- 2 FM radio frequency display
- 3 Channel no. (Channel mode)

Setting preset channels

- 1 Move to the Home menu, and press << / >> to select [Radio] menu.
- 2 Press **OK** to open the reception screen.



- 3 If you store the channel press [Yes], otherwise press [Cancel].



- You can save maximum 20 channels and existing channels will be deleted.
- In an area with weak reception, the detected channels may be less than 20.
- While scanning frequencies, the player will not be powered off and you can not hear any sound.

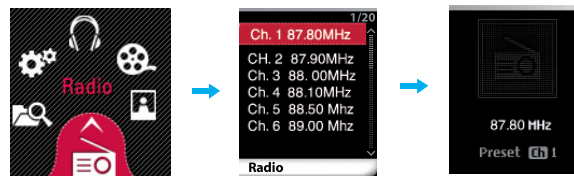
- 4 The FM radio broadcasting is received.

Set/Cancel Mute

- 1 Press **▶||** while listening to the radio. Then, the sound will become mute.
 - "Mute" will appear and the sound will mute.
- 2 Press **▶||** to listen to the sound of the received radio broadcasting.
 - The volume control bar appears.
 - You can also deactivate mute operation by pressing **V/Λ**.

Listening to the FM radio

- 1 Select of the home menu.
 - The stored channel list is displayed on screen.
- 2 Select the channel you want on the channel list.
 - You can listen to the FM radio.



Scanning the FM radio stations

Auto Scan

In Non-Preset mode, press << / >> for longer than 2 seconds, and you can find available radio stations automatically.

Manual Scan

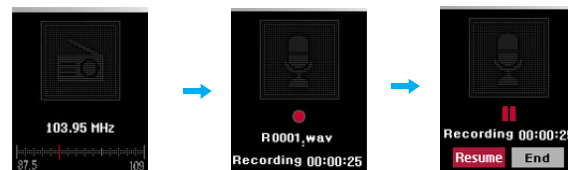
- 1 In Non-Preset mode, press << / >>, and the frequency decreases/increases.
- 2 In present mode, press << / >>, and you can listen to the previous/next preset station.

Note

- Reception may be weak in some areas.
- Earphones function as an antenna. Earphones made by other manufacturers do not guarantee optimal performance.

Recording the FM radio broadcasting

- 1 To record while listening to the radio, press the REC button for longer than 2 seconds.
 - The recording time will be displayed and the recording will start.
- 2 Press the REC button to pause.
- 3 Press << / >> to select [Resume] or [End]. Then, press **OK** to confirm selection.
 - Files less than one second long will not be saved.
 - The recorded files will be saved under Recorded file named "R0001.WAV"



Note

- If the remaining memory space is less than 15MB, the player may not record.

Listening to the recorded file

- 1 Move to the Home menu, and press << / >> to select [Music] menu.
- 2 Press **OK** to enter the submenu.
- 3 Press **V/Λ** to select [Recorded File] and OK to confirm.
- 4 Press **V/Λ** to select a recored file you want.
- 5 Press **OK** to play.

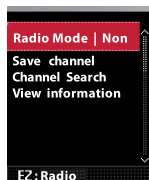


FM radio reception / All Files / Voice Recording

EZ menu

You can set the desired function or switch to the other mode using EZ menu.

- 1 Press **EZ** to display EZ menu screen while playing or pausing.



- 2 Press **V/Λ** to move to the desired item.
- 3 Press **OK** to move to the submenu.
- 4 Press **OK** once to change the setting and press it once more.
- 5 Press **EZ** to exit the EZ menu.

Radio Mode

You can select the non-preset mode or preset mode.

• Non-Preset Mode

You can set the FM radio broadcasting to frequency mode.

• Preset Mode

You can set the FM radio broadcasting to channel mode.

Save/Delete Channel

You can save or delete a currently broadcasting channel.

• Non-Preset Mode

1. Select [Save Channel].
 - "Channel Saved" is displayed on screen.

2. Press [Yes] to confirm saving.

• Preset Mode

1. Select [Delete Channel].
2. Select [Yes] or [Cancel] when the message "Delete Channel?".

Channel Search

You can store the FM radio channel automatically.

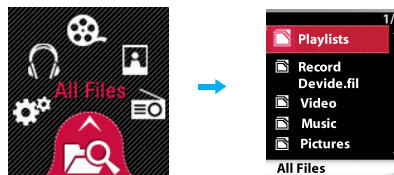
- The previous memorized channel will be deleted.
- Press [Cancel] to stop while searching the channel.

View information

Displays the information of the radio frequency, and the settings of Auto Power OFF and Sleep Mode.

All Files

- 1 Move to the Home menu, and press **<< / >>** to select [All Files] menu.
- 2 You can confirm and play the playable list on each mode.

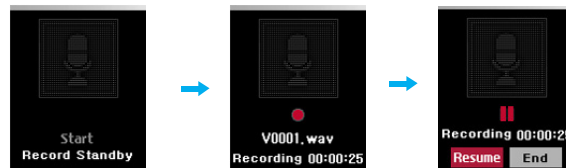


Tip

- You can check all files stored in this player. However you can play and show only the files displayed with the icon

Voice Recording

- 1 Press the REC button for longer than 2 seconds.
 - The player turns into stand-by mode for recording.
- 2 Press the REC button again to start recording.
 - The recording time will be displayed and the recording will start.
- 3 Press the REC button to pause.
- 4 Press **<< / >>** to select [Resume] or [End].
 - Then, press **OK** to confirm selection.
 - Files less than one second long will not be saved.
 - The recorded files will be saved under Recorded file named "V0001.WAV"



Note

- If the remaining memory space is less than 15MB, the player may not record.

Listening to the recorded file

- 1 Move to the Home menu, and press **<< / >>** to select [Music] menu.
- 2 Press **OK** to enter the submenu.
- 3 Press **V/Λ** to select [Recorded File] and OK to confirm.
- 4 Press **V/Λ** to select a recorded file you want.
- 5 Press **OK** to play.

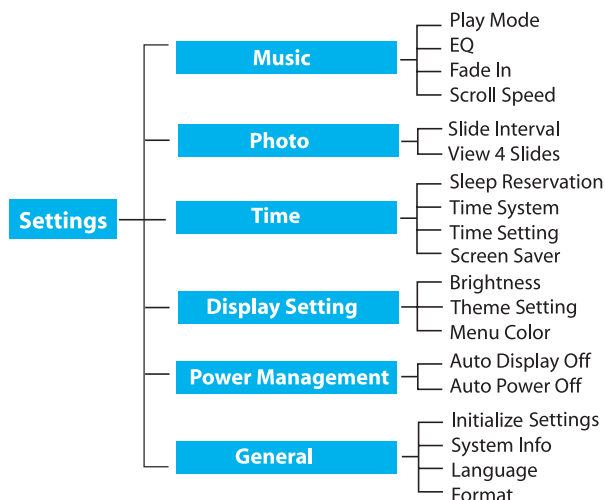
EZ menu

- **Recording Quality:** The user can set the quality of the recorded file.
 - The user can set 16kHz, 22.05kHz, 32kHz, or 44.1kHz.
- **View Information**
 - You can check recording quality, and the settings of Auto Power OFF and Sleep Mode.



Advanced setting

Settings menu list



Music

- **Play Mode :** You can select the play mode you want.
 - [Repeat One]: Plays the current file repeatedly.
 - [Play All]: Plays all music within the selected folder in order.
 - [Repeat All]: Plays all music within the selected folder repeatedly.
 - [Random All]: Plays all music within the selected folder randomly.
 - [Random Repeat All]: Repeats all music within the selected folder randomly.
- **EQ :** The user can set the sound effect.
 - Auto EQ, FLAT, XTS-Pro, POP, ROCK, R&B/SOUL, HIPHOP/RAP, JAZZ, CLASSICAL, DANCE, LIVE
- **Fade In:** You can gradually increase the volume to protect ears.
 - You can select [On] or [Off].
- **Scroll speed:** Sets the speed of the file name and ID3 tag information in the music playing mode.
 - You can select [Off], [0.5 times], [1 time], [2 times], and [3 times].

Photo

- **Slide interval:** You can select the slide show interval.
 - You can select [Off], [2 sec], [3 sec], [4 sec], or [5 sec].
- **View 4 Slides:** You can show 4 slides on one screen.
 - You can select [On] or [Off].

Time

- **Sleep Reservation:** When the defined time passes, the player will be automatically turned off.
 - You can select [Off], [10 min], [30 min], [1 hr], or [2 hr].
 - If the user sets the sleep reservation, the player will automatically store files and be turned off at the reserved time.
 - After the player is turned off at the reserved time, the sleep reservation will be automatically cancelled.
- **Time System:** You can set the current time to 12/24 hour time system.
- **Time Setting:** Sets the current time.
 - You can select [Hour]/[min.] by pressing **V**/**^**.
 - You can set each item pressing **<<** / **>>**.
- **Screen Saver:** After the defined time passes, the screen saver is activated to protect display screen.
 - You can select [Off], [5 sec], [10 sec], [30 sec], or [60 sec].
 - When the set time for screen saver activation is the same as or longer than that for Auto Power off, the screen saver is not activated.
 - When playing video file and performing photo slide show, the screen saver is not activated.

Display setting

- **Brightness :** You can adjust the brightness level from 1 to 9.
 - The default brightness is 5.
- **Theme Setting :** Sets menu type.
 - You can select [List type] or [Wheel type] by pressing **<<** / **>>**.
- **Menu Color :** You can set the color of the home menu to [Red]/[Blue].

Power Management

- **Auto Display off:** If no button is inputted during the given time, the screen will be automatically turned off.
 - You can select [5 sec], [10 sec], [30 sec], [1 min], [3 min], or [5 min].
- **Auto Power off:** If no button is selected in the standby mode for playing, the screen will be automatically turned off.
 - You can select [Off], [30 sec], [1 min], [5 min], or [10 min].

General

- **Initialize Settings:** You can initialize the setting of the player.
 - You can select [Yes] or [Cancel].
 - If you selects [Yes], the player is automatically turned off after the player is initialized.
 - If you selects [Cancel], the player moves to the previous menu.
- **System Info:** You can check product information.
 - The model name, firmware version, used memory, and remaining memory space are displayed.
- **Language:** You can select the language.
 - English, Português, Русский, Dansk, Deutsch, Nederlands, Français, Magyar, Italiano, Norsk, Polski, Español, Svenska, Українська, 中文 (繁體), Suomi, Ελληνικά, İngilizce.
- **Format:** You can delete all data in the memory, and initialize the memory.
 - You can select [Yes] or [Cancel].
 - If you selects [Yes], formatting will be made. If you selects [Cancel], the player will return to the general setup screen.
 - Back up the data stored in the player before initializing it.
 - Deleted data cannot be recovered.



Additional information

Running Firmware updater

The user can update the firmware for addition and change of features of the player and for functional improvement.

- 1 Download the firmware updater from CD.
 - In case you activate the program on CD, the compressed program will automatically be decompressed into the folder C:\LGE\V25E/R/S.
- 2 Connect the MP3 player to the USB port on your computer.

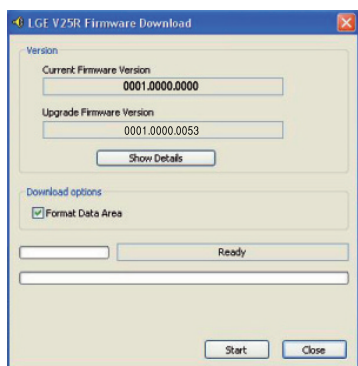


Note

Make sure your connection is solid while updating. It may result in the data loss or damage to the player.

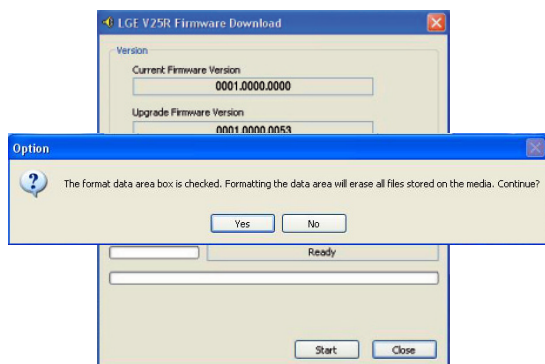
- 3 Move to the folder C:\LGE\V25E/R/S and run the firmware updater.
- 4 When the LGE MP3 Firmware download window appears, check the current firmware version.

Do not check "Format Data Area" not to do format.
Click [Start] to run the firmware updater.

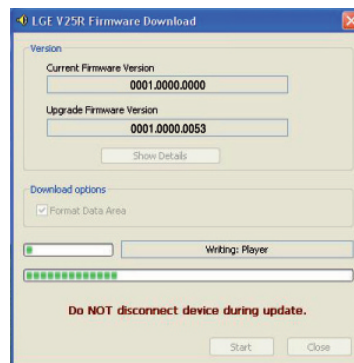


Note

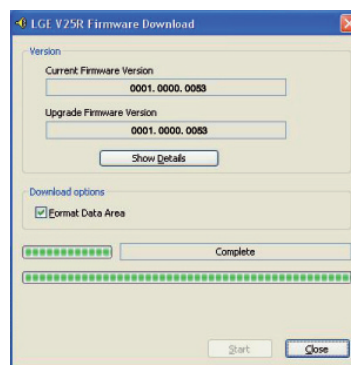
- We recommend the "Format Data Area".
 - Back up your data before executing this option. Otherwise, all files will be deleted from the player.
 - Do not disconnect the USB connector from the pc during update, or the unit will not operate.
- 5 When you format the data, the message shown below appears on display window . Click [Yes] to continue the firmware update.



- 6 Update starting.



- 7 Check the updated firmware version on the display window.
- 8 Click [Close] to finish the program.
Remove the USB connector by safely removing hardware.





Additional information

Running recovery

Running a recovery will result in a total loss of data. Always make sure to back up important data. We do not take any responsibilities for data loss.

- The PC does not recognize the player properly.
- Text appears broken and somewhat unreadable on the screen.
- The player does not work.
- You cannot download or upload files.

- 1 Activate the updater.
- 2 When a screen appears, connect the player to the USB port of the PC while pressing ►/||.
- 3 Release ►/|| when the player is recognized properly as seen in the progress bar completion status.
- 4 When the LGE MP3 Firmware download window appears, check the current firmware version.
You should not check "Format Data Area" in order not to do format.
Click [Start] to run the firmware updater.



Note

- We recommend the "Format Data Area".
- Back up your data before executing this option. Otherwise, all files will be deleted from the player.

- 5 Repeat the steps from 5 to 8(page 24).

Firmware update

Connect the player to the PC where the LG Media Center is installed to download a new version of firmware.



Note

Functions only in the Internet-connected PC.

- 1 Connect the USB connector to the USB port of the PC with the LG Media Center installed.
- 2 Check whether a new drive has been added in the Windows Explorer in the PC.
- 3 The LG Media Center will compare the firmware versions of the player and the server. If it detects a new firmware version, it asks the user whether to update the version.
Check [Now] and click [OK].
- 4 Press [OK] to download the latest firmware updater.
- 5 Select the installation path and click [OK].
- 6 Activate the updater.
- 7 Repeat the steps from 4 to 7(page 24).
- 8 When the update finishes, remove the USB connector by safely removing hardware.
- 9 Turn on the player and check the updated version of firmware.



Troubleshooting

Q : The player will not be turned on.

- A : Check whether the battery is remaining.
- A : In case the available space of the player is smaller than 10 MB after downloading files into the player, you cannot turn it on. Remove files to ensure enough space in it.

Q : The player is't powered off. Instead, the message "No space for Booting. Please delete files more than 10MB" is displayed.

- A : The data base(DB) cannot be made because the memory of the player is full. Delete unnecessary files. At least 10MB of some free space is necessary to function normally.

Q : The screen is blur.

- A : Avoid direct sun rays and adjust the brightness.
- A : Check the screen brightness.

Q : The button does not function.

- A : Check whether the Hold feature is active.
- A : Check whether you pressed right button.
Refer to the page 7 for using touch pad.
- A : Press the reset hole. Refer to the page 16.

Q : The noise is severe during listening to the radio, and the reception is poor.

- A : The earphone functions as an antenna.
Be sure to handle carefully.
- A : Slightly change the directions of the player and the earphones.

Q : The player can not receive FM broadcasting.

- A : The bundled earphones operates as an antenna. Stretch the wires not to be entangled while listening FM radio.
- A : Move to other locations where you can receive the reception and enhance its quality.
- A : Check whether you set mute.
In that case, deactivate mute operation.(Refer to page 21)

Q : After the files are downloaded, the play list will not show the newly added files.

- A : Check the downloaded file format
- A : Format the product, and download the file.

Q : After the firmware is updated, the player is not normally functioning.

- A : Reset the product (See page 16)
- A : Back up the data, and format the player.

Q : My PC can not detect an MP3 Player.

- A : Check if the USB driver on the provided CD is installed.

Q : AVI file will not play.

- A : Only video files transcoded by LG Media Center can be played. Make sure the files to be played are converted by LG Media Center. Refer to the LG Media Center [Help] how to transcode your files.

Q : An error occurs during FW download and Auto FW upgrade of LG Media Center, and MP3 player does not work after finishing the operation of FW download and Auto FW upgrade of LG Media Center.

Q : The "Bootting Error. F/W update Recovery Mode" is displayed. The player is not turned on.

- A : Connect the player to the USB port of the PC while pressing ►|| and run FW download program. And so run Recovery. (However you should press and hold ►/|| until the initialized progressive bar of Firmware download program reaches the end.) Please refer to the page 25 about the Recovery.



Specifications

Type	Item	Specifications
Memory	Capacity	2GB/4GB
	File system	FAT32
PC	OS for MP3 Player Device	Win2000/XP/Vista
	OS for LG Media Center	Win2000 / XP/Vista
	Interface	USB 2.0
General specifications	Dimensions	42 (W) X 95 (H) X 7.8 (D) (mm)
	Weight	51g (1.48oz) (with battery) / Depends on the product model.
	Operating temperature	-5°C + 45°C
Audio	Frequency range	20Hz ~ 20kHz
	Signal-to-noise ratio	85dB
	Channel separation	35dB (1kHz)
	Maximum output	9mW+9mW
FM radio (Optional)	Frequency range	87.5~108MHz
	Signal-to-noise ratio	38dB
	Stereo separation	25dB(1kHz)
	Antenna	Earphones antenna
Playback time	Video	About 1.5 hours
	Audio	About 16 hours (for 128Kbps/44.1KHz EQ Flat, Vol 15)
Recording time	FM radio(Optional)/ Voice recording	Maximum 10 hours
Power supply	AC adapter	DC5V, 1A
	Battery (Built-in)	Li-polymer DC 3.7V 320mAh Rechargeable Battery
Files	Audio	MP3, OGG, WMA, WAV
	Video	LG AVI(MPEG4 + MP3. QCIF 128 x 160, 30fps, 600kbps)
	Image viewer	JPG/BMP/GIF
Display	Display	1.77" (OLED) / 260,000 colors

Optional by Models

Type	Memory	Model Name
With FM (100kHz)	2GB	V25SEE2K
	4GB	V25SEE4K
With FM (50kHz)	2GB	V25REE2K
	4GB	V25REE4K
Without FM	2GB	V25EEE2K
	4GB	V25EEE4K



Note

Some parts of the storage space of the MP3 player are usually used for storing the information that is internally treated. Therefore, the storage capacity that can be actually used may be somewhat smaller than specified in the manual. (The size of the storage space for the internally treated information can be changed for product upgrade without any notice to the end users.)

<http://www.lge.com>

Information related to the product is available at this site.

- By updating the firmware, you can improve the performance of the product.



Specifications

Supported file specification

MP3 Decoder

- Support MP3 decoding including Variable Bit Rate(VBR)
- O : Support both Stereo and Mono
- O(s) : Only Stereo
- O(m) : Only Mono

MP3 Decoder

kbps/kHz	MPEG 1 Layer 3			MPEG2 layer3			MPEG2.5		
	44.1	48	32	22.05	24	16	11.025	12	8
8				O	O	O	O	O	O
16				O	O	O	O	O	O
24				O	O	O	O	O	O
32	O	O	O	O	O	O	O	O	O
40	O	O	O	O	O	O	O	O	O
48	O	O	O	O	O	O	O	O	O
56	O	O	O	O	O	O	O	O	O
64	O	O	O	O	O	O	O	O	O
80	O	O	O	O	O	O			
96	O	O	O	O	O	O			
112	O	O	O	O	O	O			
128	O	O	O	O	O	O			
144				O	O	O			
160	O	O	O	O	O	O			
192	O	O	O						
224	O	O	O						
256	O	O	O						
320	O	O	O						

kb/s / kHz	MPEG1 Layer1			MPEG1 Layer2		
	44,1	48	32	44,1	48	32
32				O	O	O
36	O	O	O			
48				O	O	O
56				O	O	O
64	O	O	O	O	O	O
80				O	O	O
96	O	O	O			
112				O	O	O
128	O	O	O	O	O	O
160	O	O	O	O	O	O
192	O	O	O	O	O	O
224	O	O	O	O	O	O
256	O	O	O	O	O	O
288	O	O	O			
320	O	O	O	O	O	O
352	O	O	O			
384	O	O	O	O	O	O
416	O	O	O			
448	O	O	O			

kbps/kHz	MPEG2 Layer 1			MPEG2 layer2		
	16	22.5	24	16	22.5	24
8				O	O	O
16				O	O	O
32	O	O	O	O	O	O
40				O	O	O
48	O	O	O	O	O	O
56	O	O	O	O	O	O
64	O	O	O	O	O	O
80	O	O	O	O	O	O
96	O	O	O	O	O	O
112	O	O	O	O	O	O
128	O	O	O	O	O	O
144	O	O	O	O	O	O
160	O	O	O	O	O	O
176	O	O	O			
192	O	O	O			
224	O	O	O			
256	O	O	O			

WMA Decoder

- Ver 4x, 7, 8 (o) Ver 9 (●) (ASF not supported)

WMA DECODER

kb/s / kHz	48	44,1	32	22,05	16	11,025	8
384			●(s)				
320		●(s)					
256		●(s)					
192	●(s), O(s)	●(s), O(s)					
160	●(s), O(s)	●(s), O(s)					
128	●(s), O(s)	●(s), O					
96	●(s)	●(s), O(s)					
80	●(s)	●(s), O(s)	O(s)				
64	●(s)	●(s), O	O(s)				
48		O	●(s)				
44			O(s)				
40			O(s)				
36			O(s)				
32		O	O	●(s)			
22			O(s)	O(s)			
20			O(m)	O	O(s)		
16				O(m)	O		
12					O(m)		O(s)
10					O(m)	O(m)	
8						O(m)	O(m)
6							O(m)
5							O(m)

WAV Encoder(ADPCM)

- 16KHz, 22.05KHz, 32KHz, 44.1KHz Spec
- FM Radio = 44.1 KHz

WAV DECODER

MS-ADPCM							
kbps/kHz	48	44,1	32	22,05	16	11,025	8
4	O	O	O	O	O	O	O
IMA-ADPCM							
4	O	O	O	O	O	O	O
PCM							
4	O	O	O	O	O	O	O
16	O (m)	O	O	O	O	O	O
24	O (m)						

WAV Decoder

OGG Decoder

- Q(-1) ~ Q(10) Supported

Supported photo file format

- JPG(MAX 5120 x 3840 pixels), BMP (8bit, 24bit bmp), GIF(MAX 2560 x 1920 pixels, 8bpp)
- Progressive JPEG not supported

