



Internal Use Only

Website <http://biz.lgservice.com>

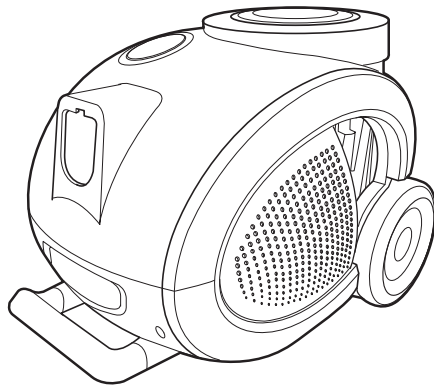
VACUUM CLEANER

SERVICE MANUAL

MODEL : V-KC702HTU

CAUTION

BEFORE SERVICING THE UNIT, READ THE
"SAFETY PRECAUTIONS" IN THIS MANUAL.



P/NO : MFL52434307

September, 2009
Printed in Korea

CONTENTS

SAFETY PRECAUTIONS	3
CAUTIONS	3
DESCRIPTION	4
SPECIFICATIONS	4
DISASSEMBLY	5~6
TROUBLE SHOOTING GUIDE	7~9
SCHEMATIC DIAGRAM	10
CIRCUIT DIAGRAM	11
EXPLODED VIEW	12~15
REPLACEMENT PARTS LIST	16~17

SAFETY PRECAUTIONS

BEFORE OPERATING THIS VACUUM CLEANER, READ THIS SERVICE MANUAL THOROUGHLY, AND OBSERVE EACH POINT CAREFULLY.

1. Motor filter(Air Cleaner)

- 1) This filter is reusable.
- 2) Never use the vacuum cleaner without filter.
It may damage the motor.
- 3) When the light of body is on, wash the motor filter with water.
- 4) Even if the light is not on, wash the motor filter at least once 6 months.

NOTE : Reusing of the motor filter.

- Never wash the filter in a washing machine or in a dishwasher.
- Never use hot water for washing the filter.
- Reuse the filter after drying it completely in the shade for a day.
- Do not dry near fire or direct sunray.

2. Exhaust filter(Washable HEPA filter)

- 1) This filter is reusable HEPA filter.
- 2) For clean air, this filter must be assembled.
- 3) Wash the exhaust filter with water once a year.
- 4) When the light of body is on, wash the exhaust filter with water.

NOTE : Reusing of the exhaust filter.

- Never wash the filter in a washing machine or in a dishwasher.
- Never use hot water for washing the filter.
- Reuse the filter after drying it completely in the shade for a half day.
- Do not dry near fire or direct sunray.
- Do not brush the filter. This will cause permanently damage allowing dust to by-pass the filter.
- Do not wash the blue side of the filter.

3. Avoid suction such materials as :

- 1) Liquid or wet dust :
Clogs the ventilation holes, reduces the suction power significantly and harms the motor.
- 2) Inflammable liquids such as benzene, alcohol or solvents.
- 3) Burning objects such as cigarette butts.
- 4) Bulky objects such as vinyl, paper etc.
- 5) Sharp objects such as needles, pins, metal, glass particles etc.

4. Attachments

- Nozzle : for cleaning wooden floor, the room floor and carpet.
- Dusting brush : for cleaning clothes curtains.

5. Close supervision is necessary when this vacuum cleaner is used by or near children. Children's carelessness may cause damage to the cleaner or injure persons.

6. Air exhausted from the vacuum cleaner is normally warm. But if extraordinarily hot air is exhausted, check if the telescopic tube, hose or clean filter is clogged or not.

7. Electric shock could occur if used outdoors or on wet surfaces.

CAUTIONS

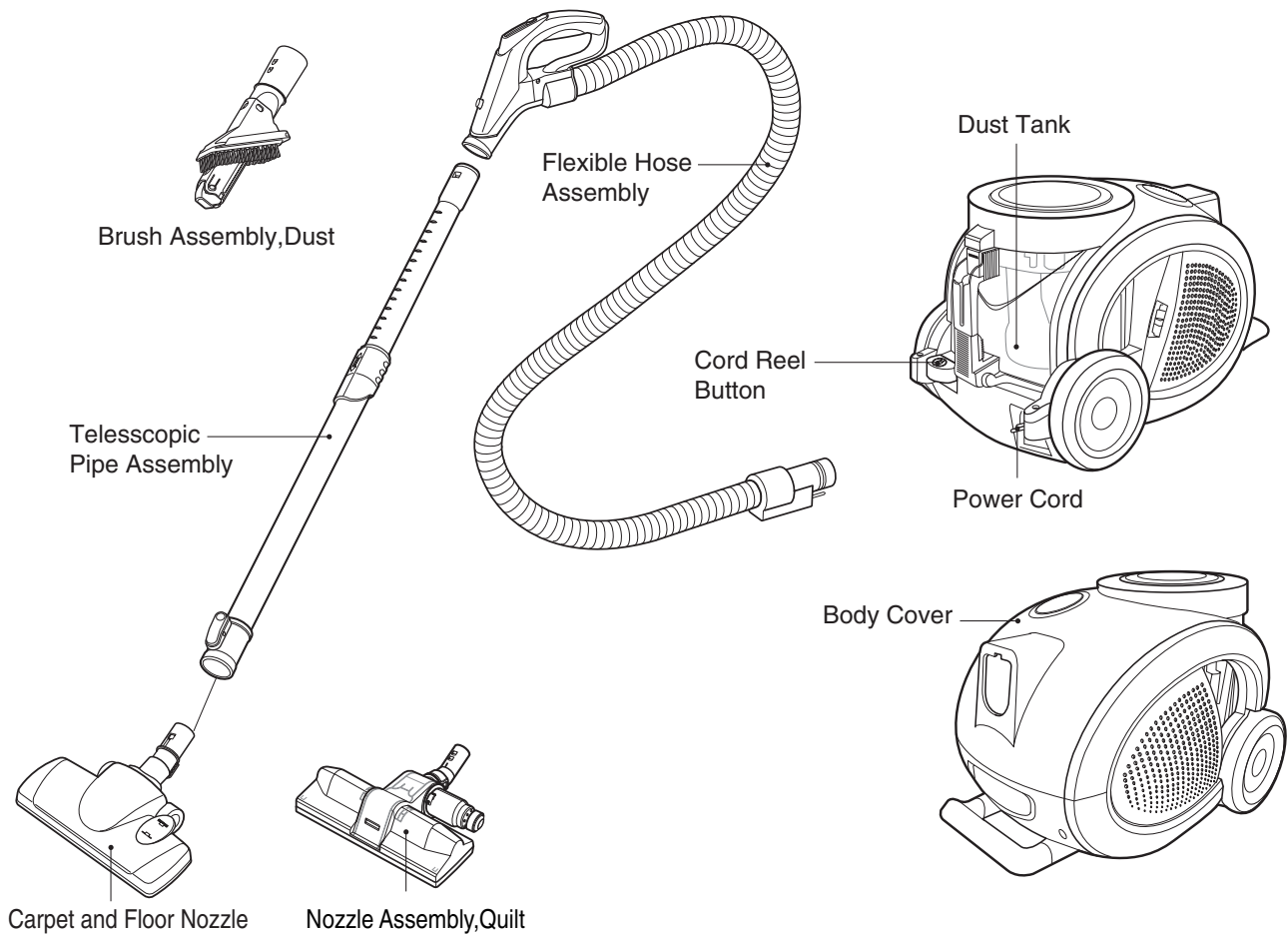
BEFORE ATTEMPTING TO SERVICE OR ADJUST ANY PART OF THE VACUUM CLEANER, DISCONNECT THE ELECTRICAL POWER SUPPLY CORD FROM THE WALL OUTLET.

1. Motor exchange

- 1) Separate the Body Cover and Body Base by unfastening the screws.
- 2) After disconnecting the lead wires, replace the old motor with a new one.

2. In case of exchanging other parts. refer to the exploded view.

DESCRIPTION



SPECIFICATIONS

- **MODEL** : REFER TO THE COVER PAGE
- **POWER SOURCE** : ON RATING PLATE
- **POWER CONSUMPTION** : ON RATING PLATE
- **POWER CONTROL** :
- **MAIN** : SLIDE KNOB CONTROL (F/HOSE)
- **CORD LENGTH** : 10 m
- **HOSE LENGTH** : 1.5 m
- **NET WEIGHT** : 6.4 kg
- **PACKING WEIGHT** : 10.5 kg
- This specifications are subject to change according to the buyer's request.

- **NET DIMENSION** : 280 X 440 X 286 (W X D X H)mm
 - **PACKING DIMENSION** : 330 X 615 X 330 (W X D X H)mm
 - **ATTACHMENTS**
- | | |
|--------------------------------|-----|
| HOSE | 1EA |
| TELESCOPIC PIPE ASSEMBLY | 1EA |
| NOZZLE ASSEMBLY | 1EA |
| NOZZLE ASSEMBLY, QUILT | 1EA |
| BRUSH ASSEMBLY, DUST | 1EA |

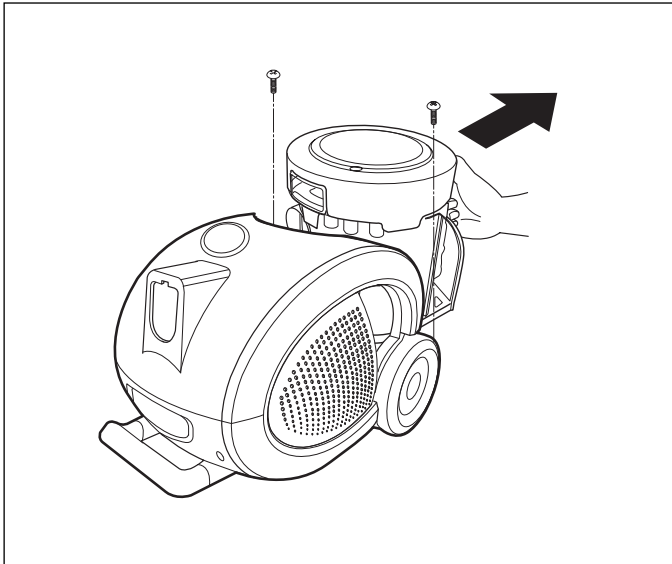
DISASSEMBLY

NOTE: Before attempting to service or adjust any part of the vacuum cleaner, disconnect the electrical power supply cord from the wall outlet.

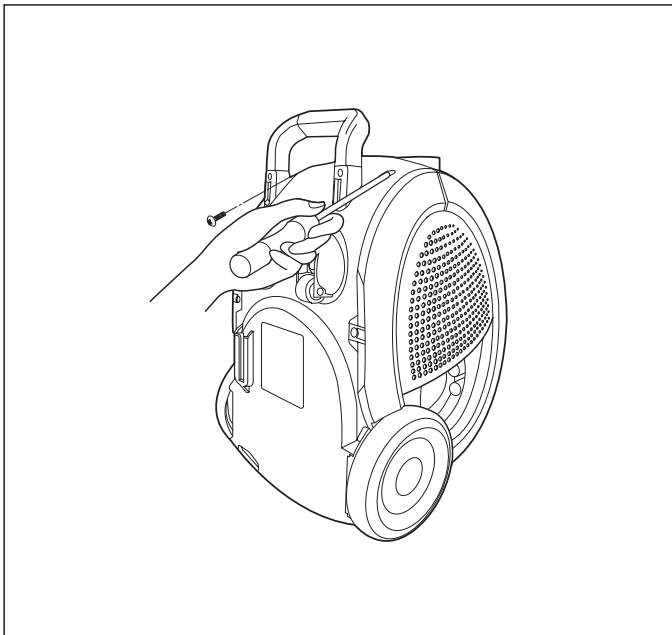
- Almost all of the parts of this vacuum cleaner can be disassembled with a screw driver and each connecting component easily fits each other. Disassemble one by one referring to the exploded view.
- If possible, don't disassemble except for the necessary parts. It is not necessary to disassemble the parts that are not detailed in the exploded view.

1. Body Cover Assembly Replacement

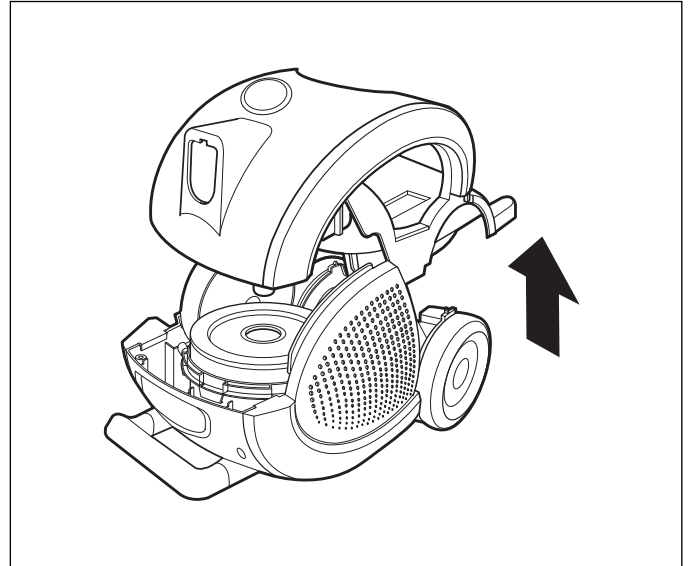
- 1) Remove the dust tank from the set.
Remove the two screws fastening the sub cover.



- 2) Remove the four screws fastening the body base.

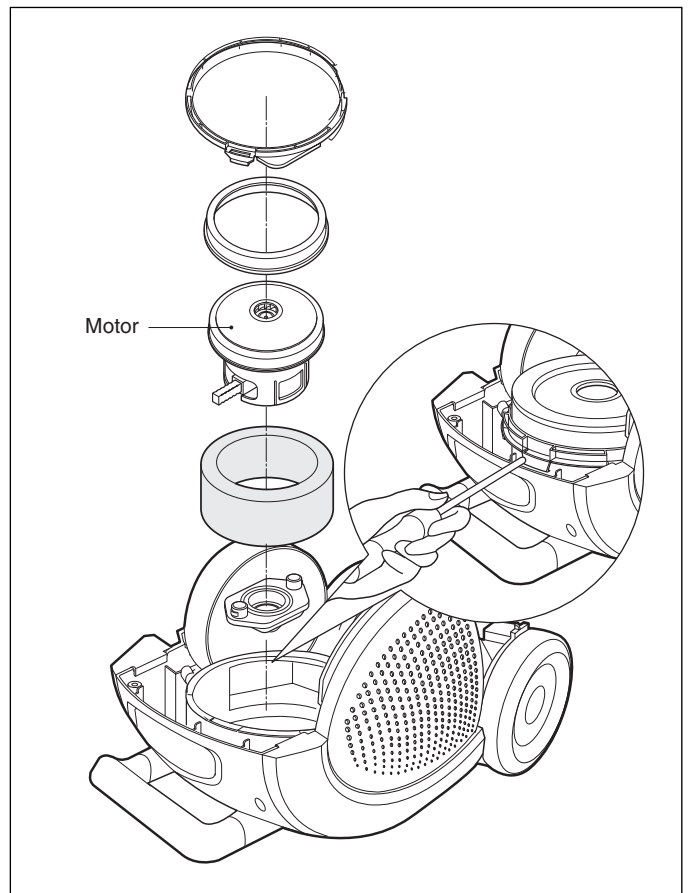


- 3) Disassemble the body cover, raising the body cover.



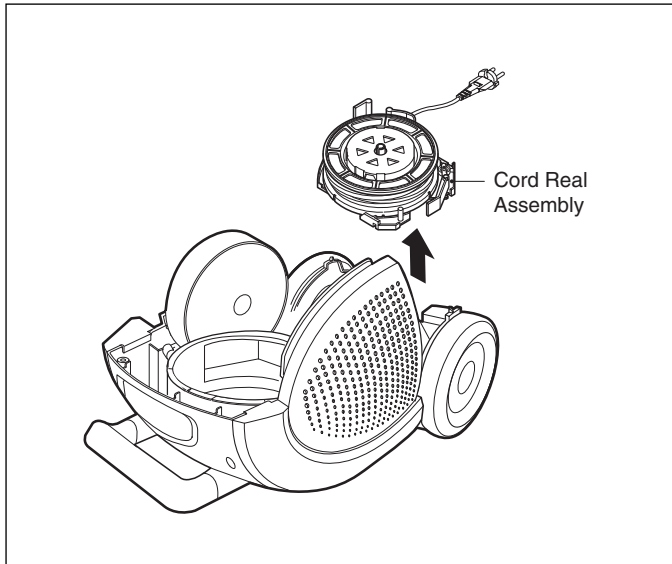
2. Motor Assembly Replacement

- 1) Unhook the four hook.
- 2) Pull out the motor and disconnect the lead wires from it.



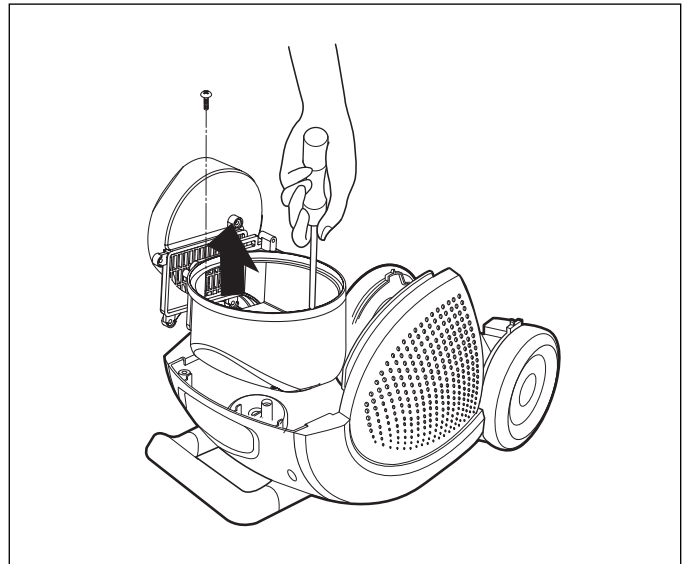
3. Cord Reel Assembly Replacement

1) Lift the cord reel assembly from body base.



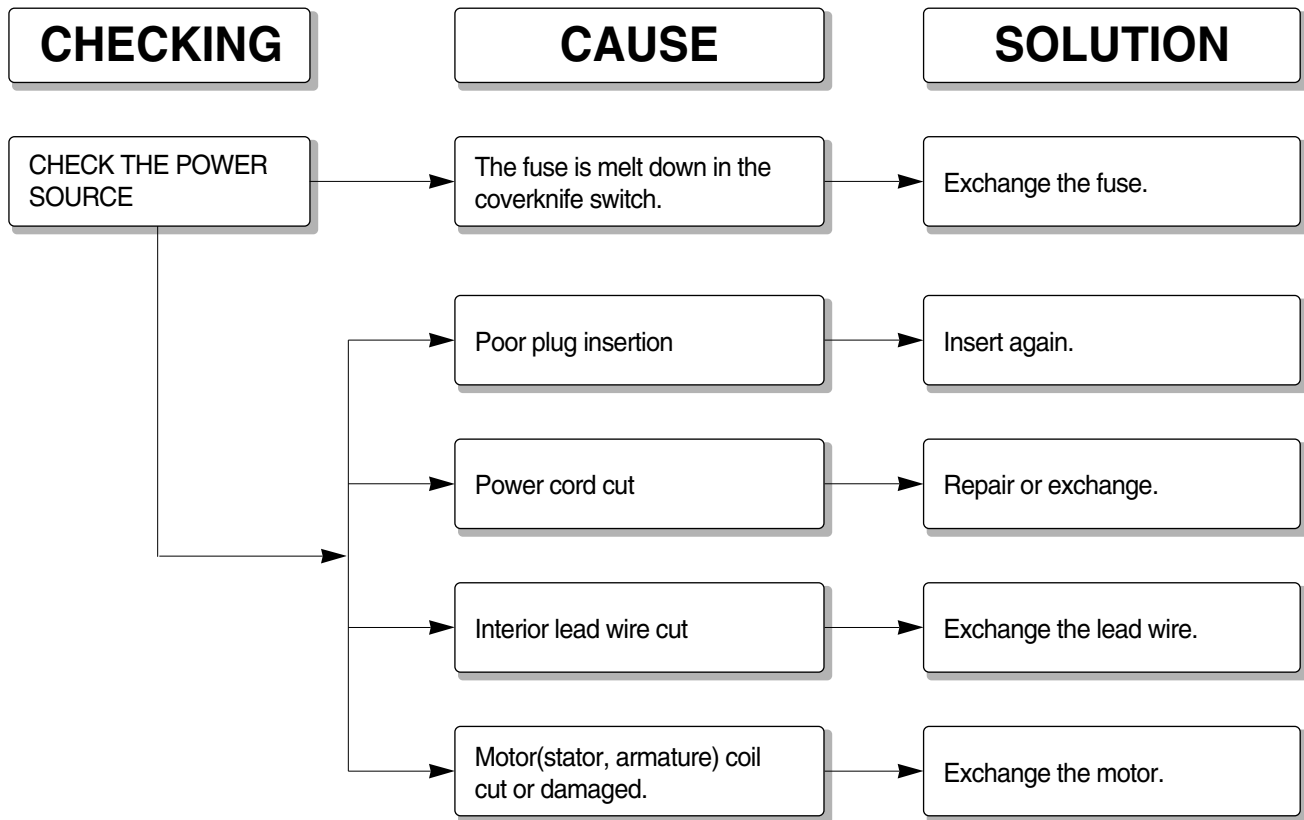
4. Disassembly of motor housing

1) Remove the two screws fastening the body base.

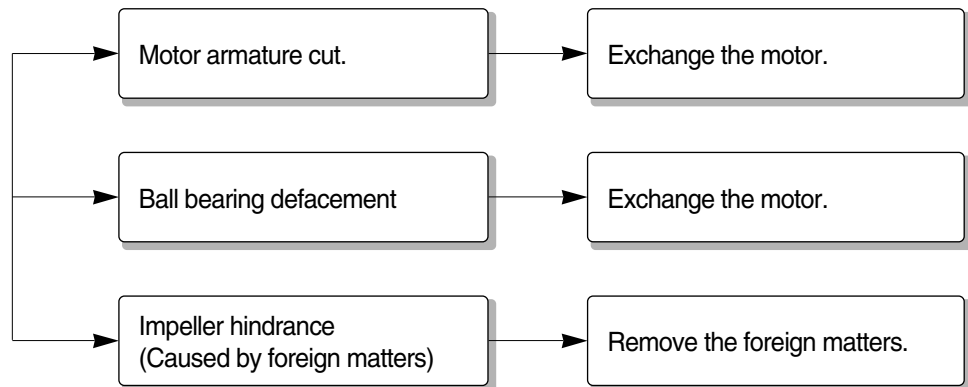


TROUBLE SHOOTING GUIDE

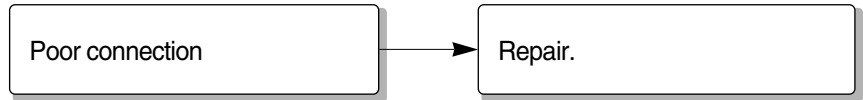
1. SWITCH ON BUT MOTOR DOES NOT TURN.



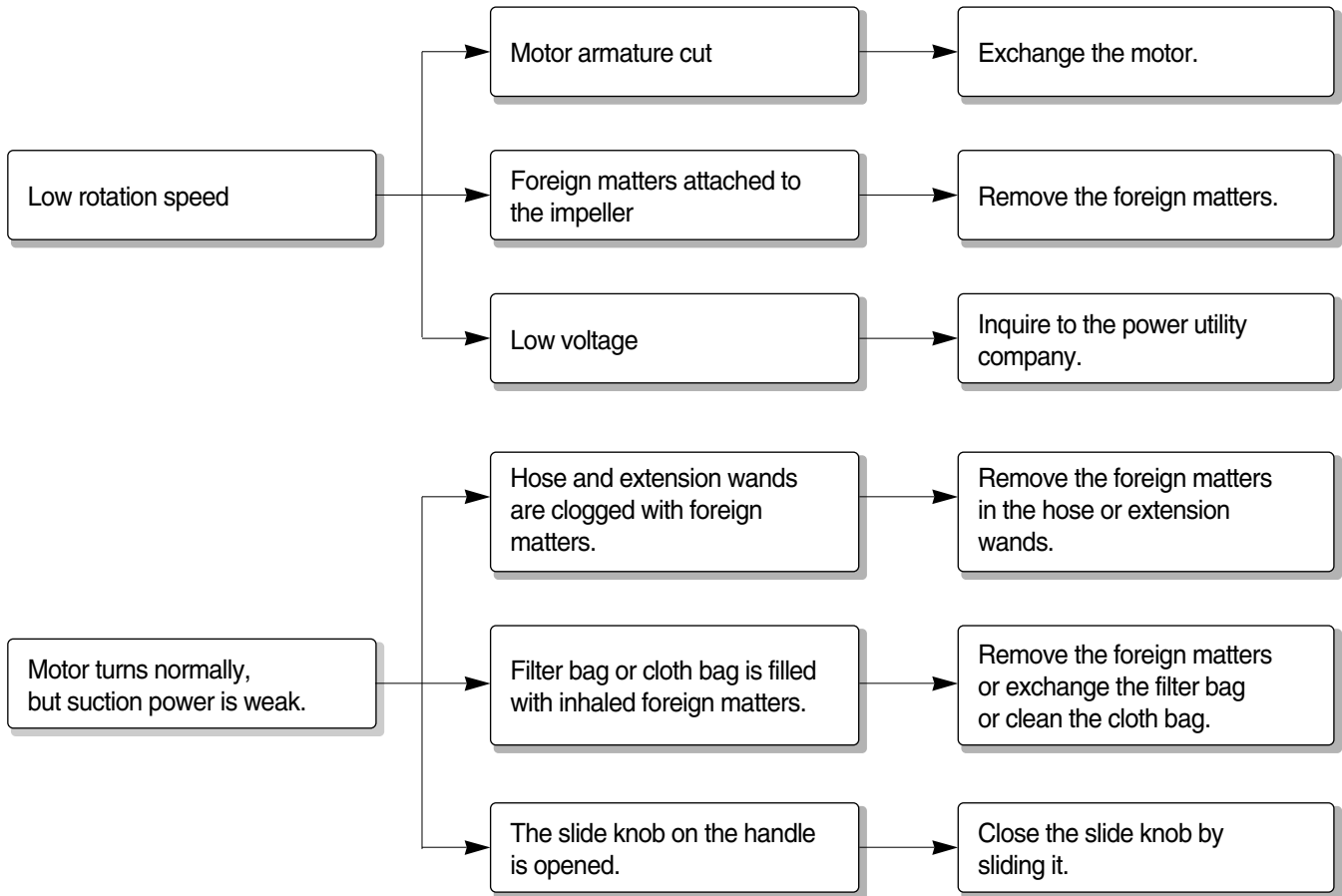
2. SWITCH ON, MOTOR DOES NOT TURN BUT BUZZES.



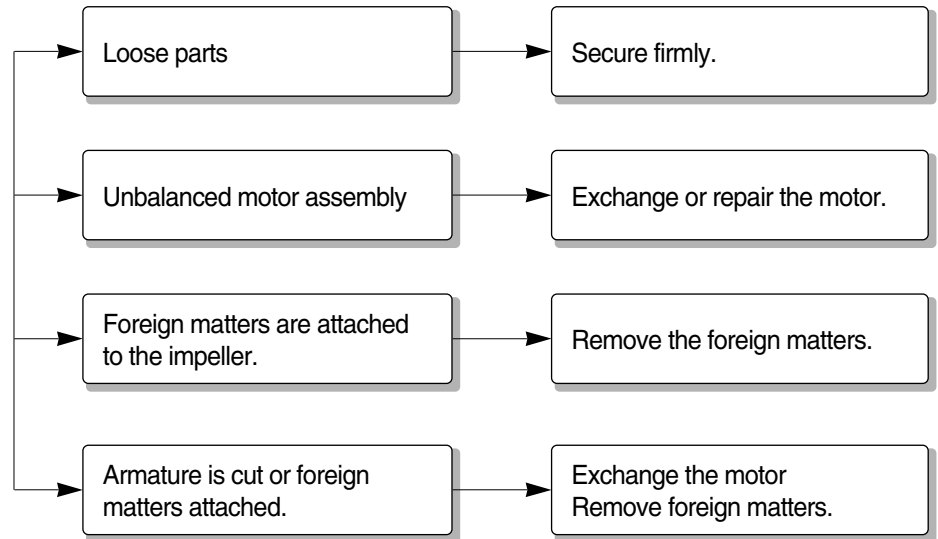
3. SWITCH OFF BUT MOTOR TURNS



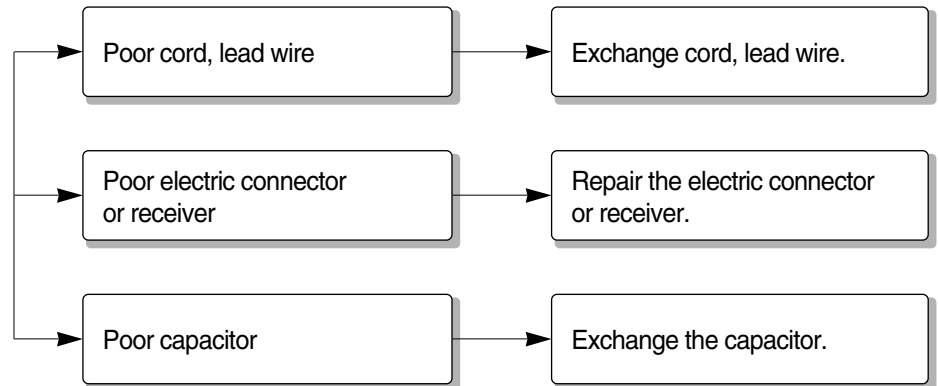
4. WEAK SUCTION POWER



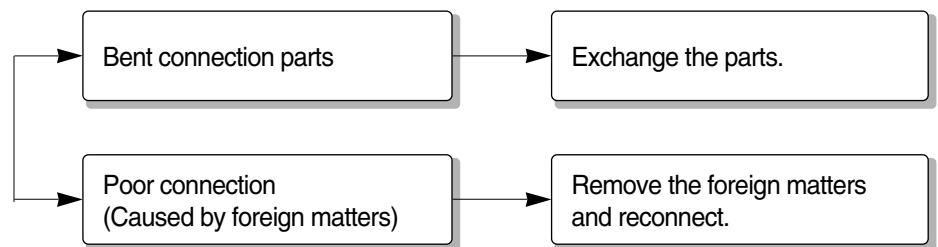
5. VIBRATION NOISES



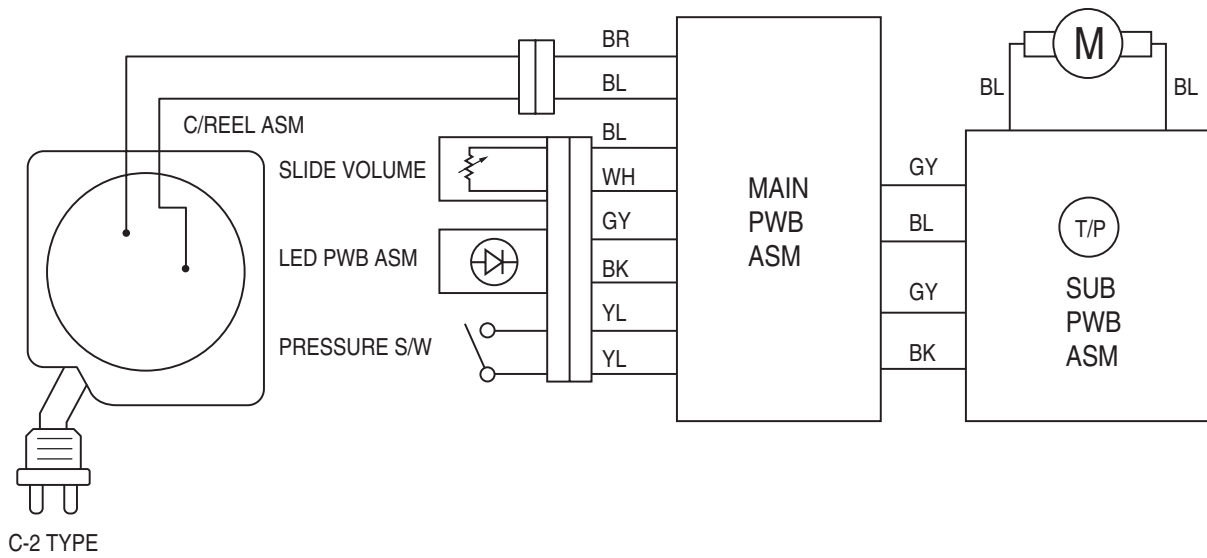
6. RADIO, TV RECEPTION DISTURBANCE



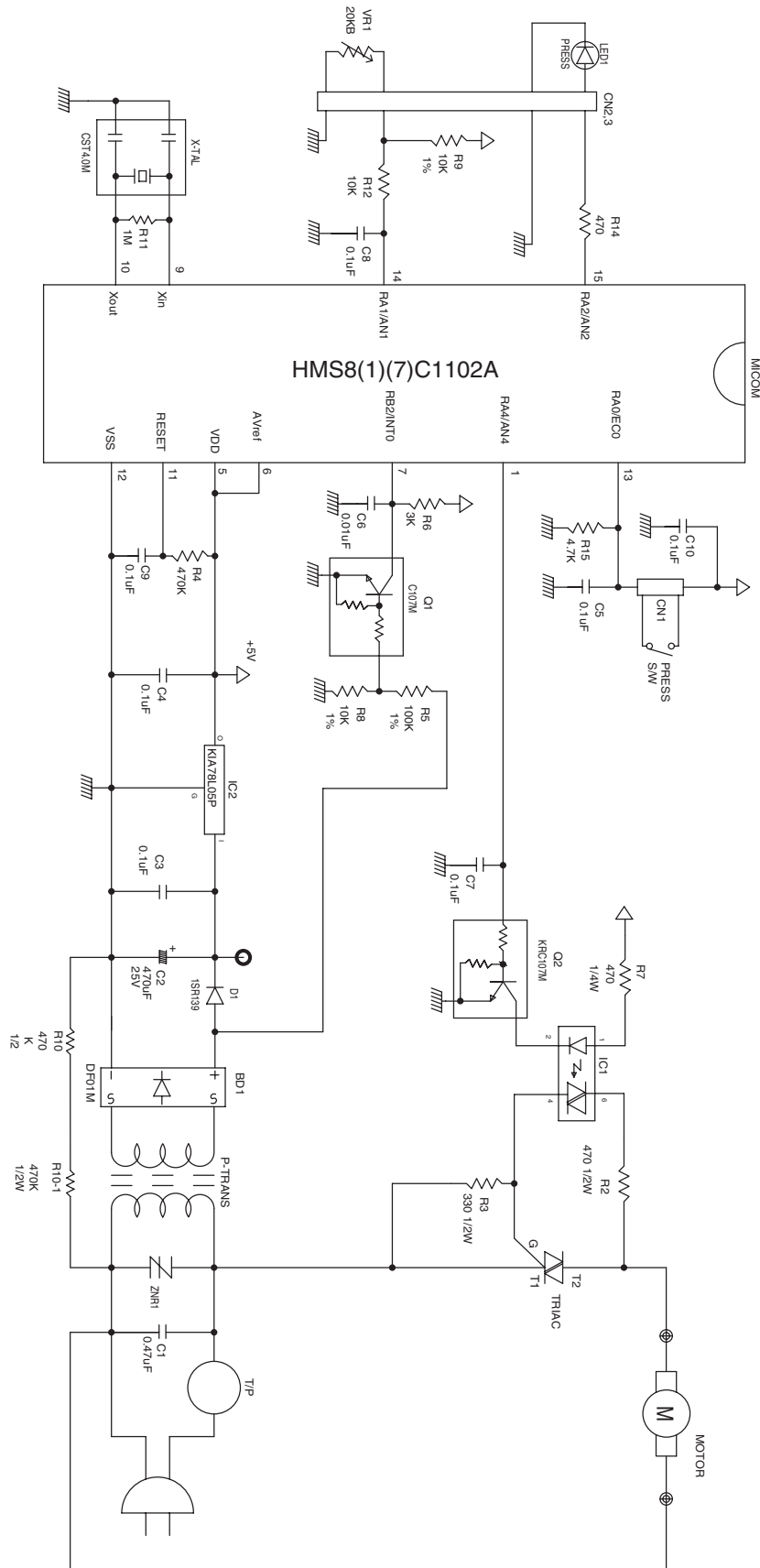
7. IMPROPER TUBE OF NOZZLE CONNECTION



SCHEMATIC DIAGRAM



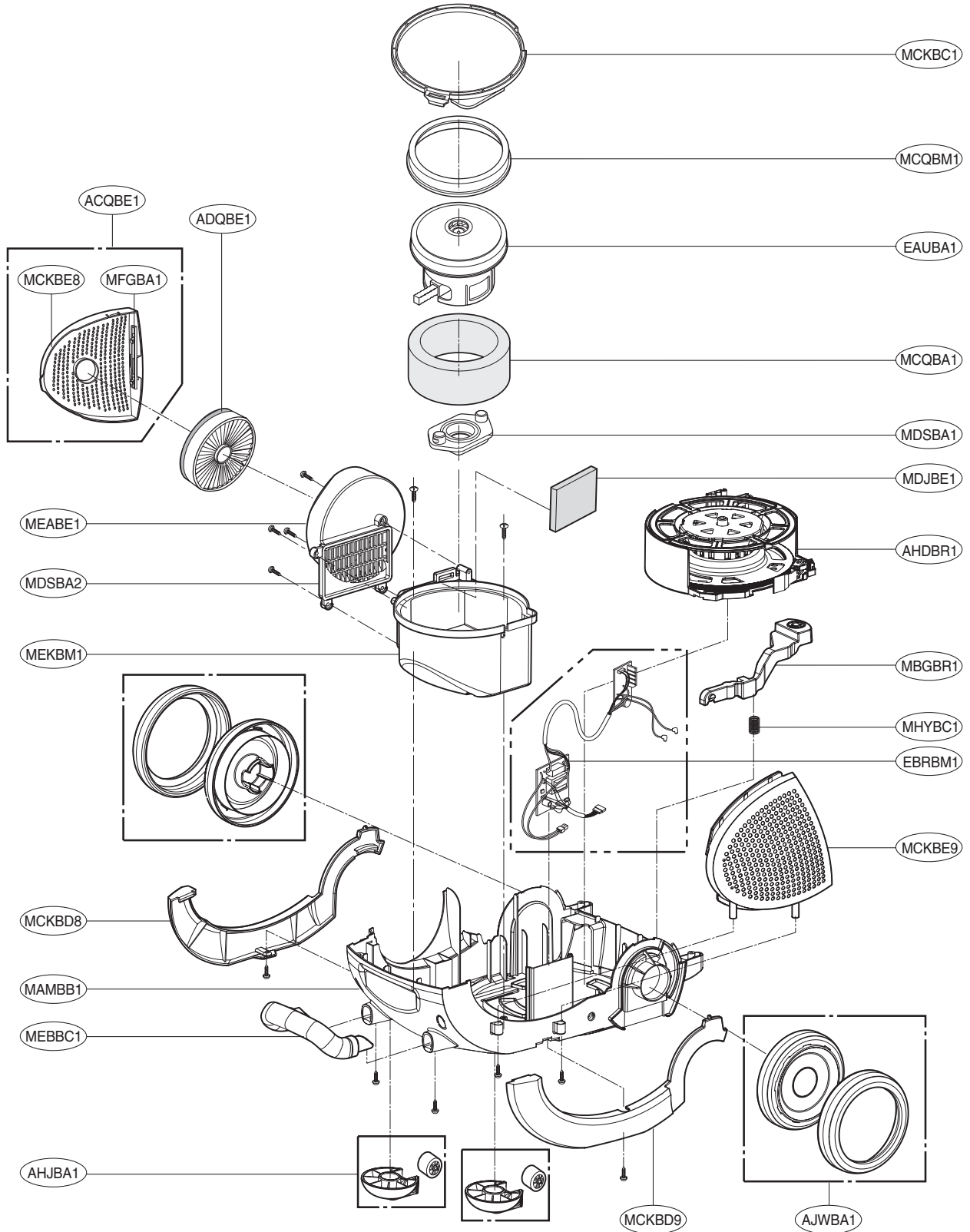
CIRCUIT DIAGRAM



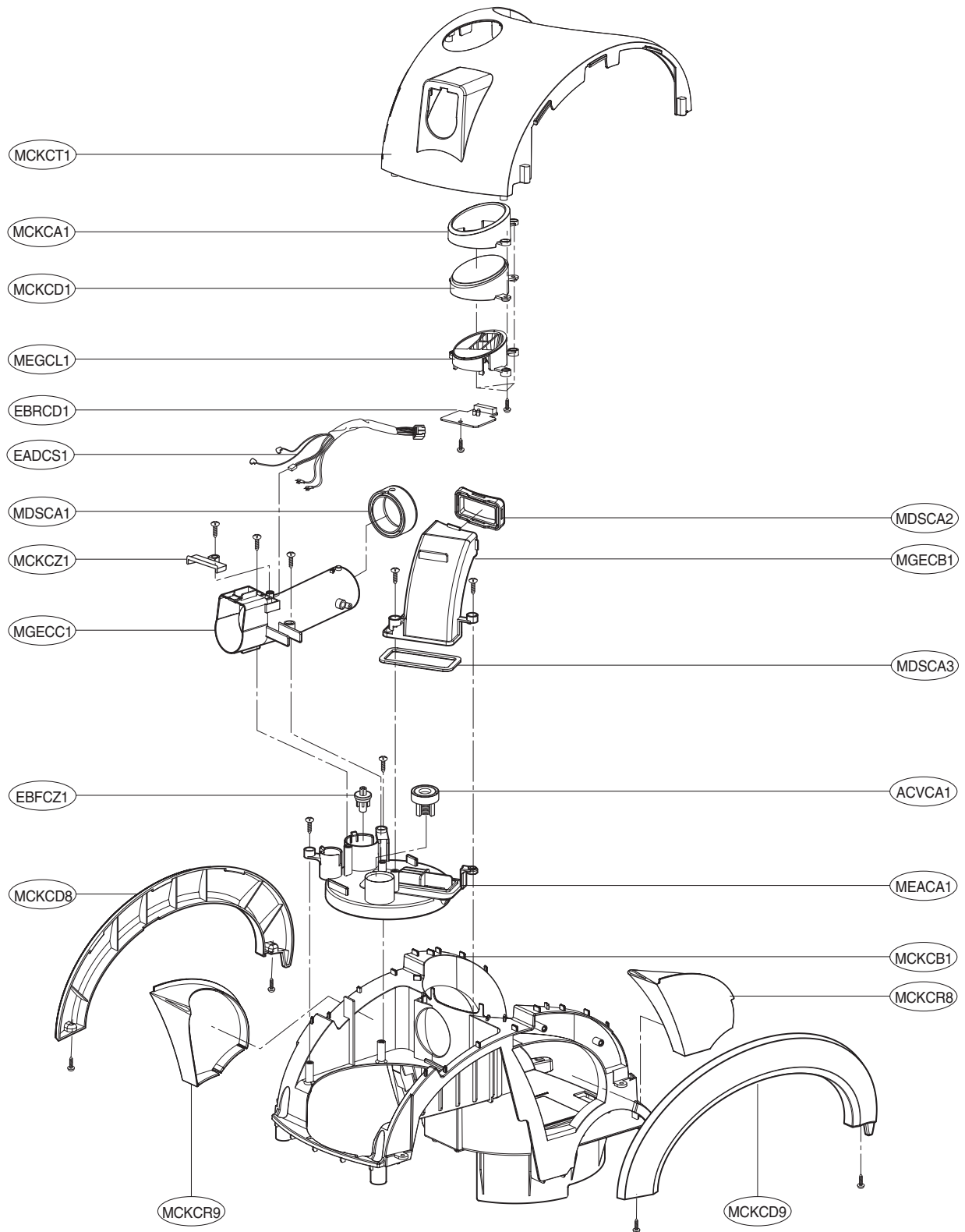
EXPLODED VIEW

BASE ASSEMBLY, BODY

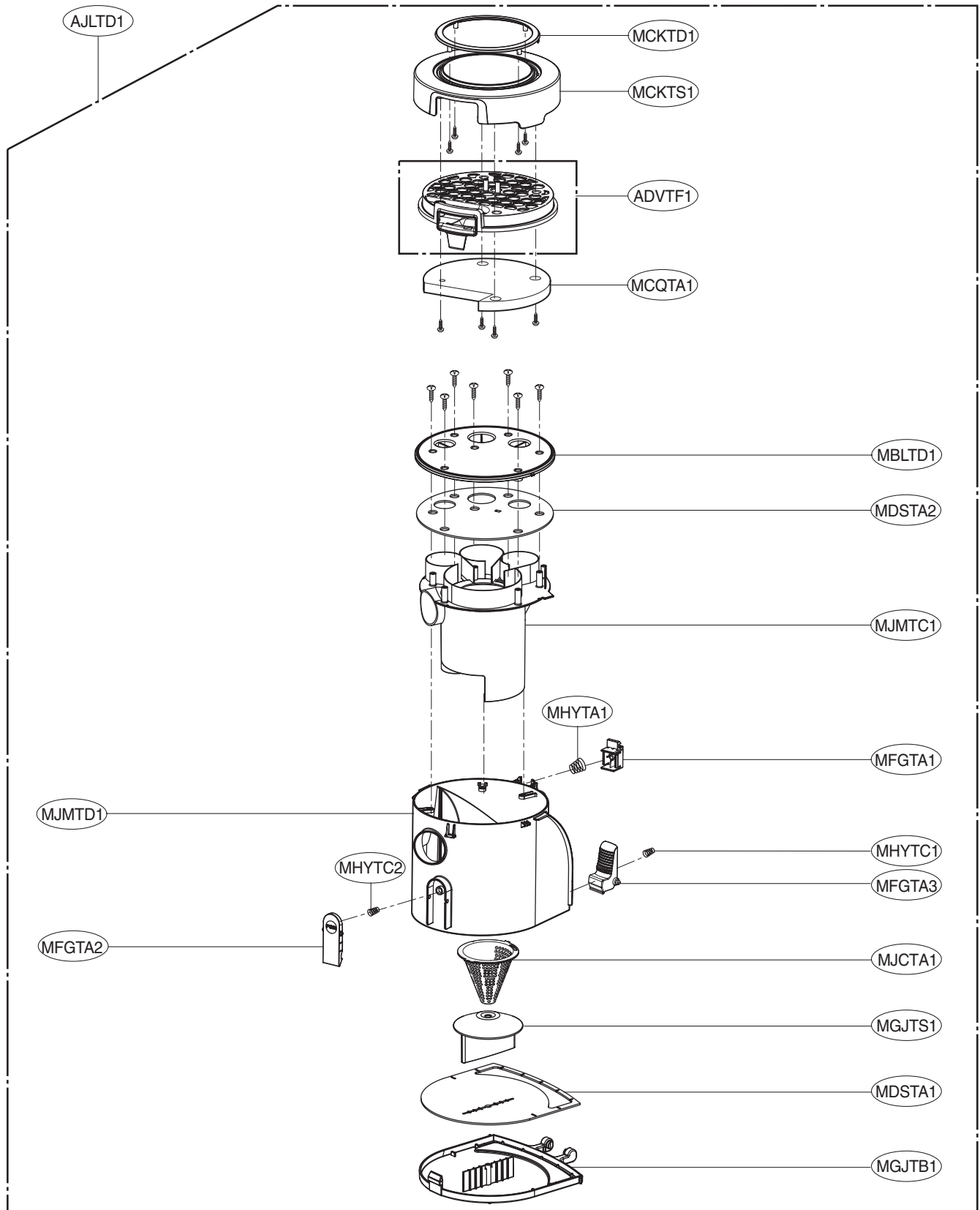
V-KC702HTU(V-KC702HTU.AXRQSBI)



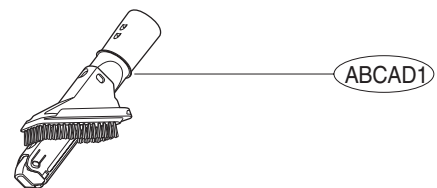
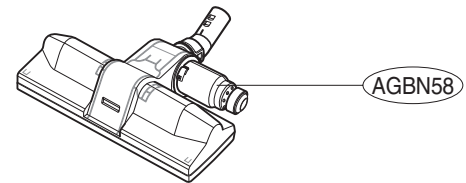
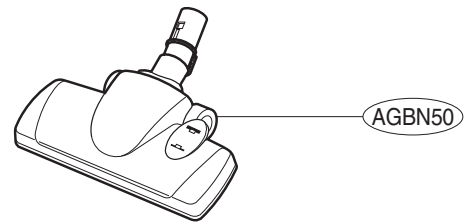
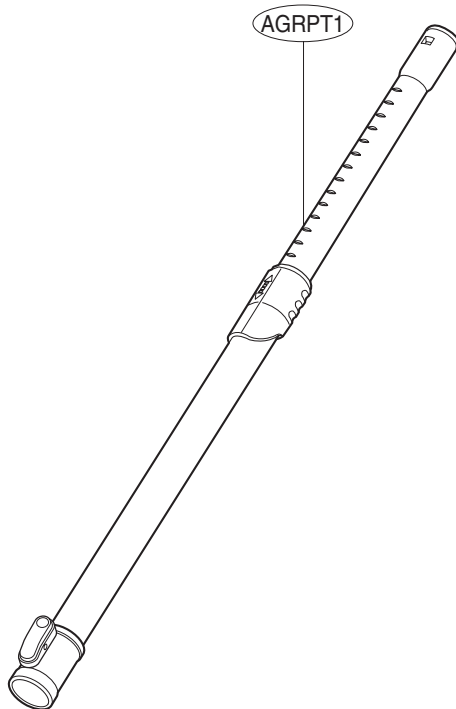
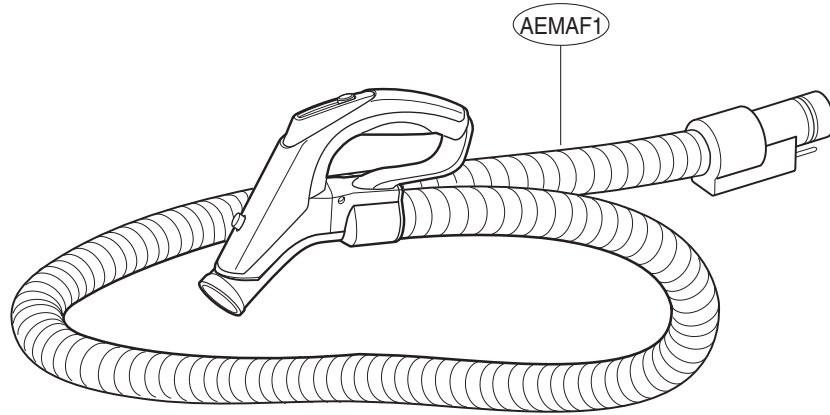
COVER ASSEMBLY, BODY



TANK ASSEMBLY, DUST



ACCESSORIES



REPLACEMENT PARTS LIST

LOC. NO.	PART NO.	DESCRIPTION	SVC	REMARK
ABCAD1	5203FI1216D	Brush Assembly	R	
ACQBE1	3551FI2451E	Cover Assembly,Exhaust	R	
ACVCA1	4901FI2001Y	Damper Assembly	R	
ADQBE1	5231FI2472D	Filter Assembly,Exhaust	R	
ADVTF1	3211FI1005B	Frame Assembly,Filter	R	
AEMAF1	AEM61730905	Hose Assembly,Flexible	R	
AGBN50	5249FI1445J	Nozzle Assembly,Floor	R	
AGBN58	AGB32061205	Nozzle Assembly,Quilt	R	
AGRPT1	5201FI2508G	Pipe Assembly,Telescopic	R	
AHDBR1	4687FI1501E	Reel Assembly	R	
AHJBA1	4441FI3621B	Roller Assembly	R	
AJLTD1	AJL60754310	Tank Assembly,Dust	R	
AJWBA1	AJW32833501	Wheel Assembly	R	
EADCS1	6631FI3155E	Harness,Single	R	
EAUBA1	4681FI2467D	Motor Assembly,AC,Vacuum Cleaner	R	
EBFCZ1	6601FI3501D	Switch,Pressure	R	
EBRBM1	6871FX2216L	PCB Assembly,Main	R	
EBRCD1	6871FX2237B	PCB Assembly,Display	R	
MAMBB1	3040FI1567B	Base,Body	R	
MAY000	MAY57080502	Box	R	
MBGBR1	5020FI3845C	Button,Cord Reel	R	
MBLTD1	MBL49423501	Cap,Dust	R	
MCKBC1	3550FI2670A	Cover,Housing	R	
MCKBD8	3550FI2668C	Cover,Decor	R	
MCKBD9	3550FI2669C	Cover,Decor	R	
MCKBE8	3550FI2674B	Cover,Exhaust Filter	R	
MCKBE9	3550FI2667B	Cover,Exhaust Filter	R	
MCKCA1	3550FI3963A	Cover,Decor	R	
MCKCB1	3550FI1937B	Cover,Body	R	
MCKCD1	3550FI3962A	Cover,Display	R	
MCKCD8	3550FI2672C	Cover,Decor	R	
MCKCD9	3550FI2671C	Cover,Decor	R	
MCKCR8	MCK30372801	Cover,Rear	R	
MCKCR9	MCK30372401	Cover,Rear	R	
MCKCT1	3550FI1938A	Cover,Top	R	
MCKCZ1	3550FI3802D	Cover,Terminal	R	
MCKTD1	3550FI2673A	Cover,Decor	R	
MCKTS1	3550FI1939B	Cover,Dust	R	
MCQBA1	3920FI3791F	Damper,Absorbing	R	

R : SERVICE PARTS

LOC. NO.	PART NO.	DESCRIPTION	SVC	REMARK
MCQBM1	MCQ30443201	Damper, Motor Mount	R	
MCQTA1	3920FI3966B	Damper, Absorbing	R	
MDJBE1	5230FI3797C	Filter, Exhaust	R	
MDSBA1	MDS32309801	Gasket	R	
MDSBA2	4036FI3677G	Gasket	R	
MDSCA1	3920FI3963A	Gasket	R	
MDSCA2	3920FI3964A	Gasket	R	
MDSCA3	403683I002A	Gasket	R	
MDSTA1	MDS52146901	Gasket	R	
MDSTA2	MDS52147001	Gasket	R	
MEABE1	4974FI1017A	Guide, Exhaust	R	
MEACA1	4974FI2414A	Guide, Air	R	
MEBBC1	3650FI2437B	Handle, Carrier	R	
MEGCL1	4980FI3806A	Holder, LED	R	
MEKBM1	3660FI1258A	Housing, Motor	R	
MFGBA1	4026FI3726C	Locker	R	
MFGTA1	4026FI3723C	Locker	R	
MFGTA2	4026FI3724C	Locker	R	
MFGTA3	4026FI3725C	Locker	R	
MFL552	MFL32342016	Manual, Owners	R	
MGECB1	5200FI1240A	Pipe, Bending	R	
MGEC1	5200FI1241C	Pipe, Connector	R	
MGJTB1	MGJ49462502	Plate, Bottom	R	
MGJTS1	MGJ49462402	Plate, Shield	R	
MHYBC1	4970FI4694F	Spring, Coil	R	
MHYTA1	4970FI3211A	Spring	R	
MHYTC1	4970FI3217J	Spring, Coil	R	
MHYTC2	4970FI3217C	Spring, Coil	R	
MJCTA1	MJC33814801	Strainer, Inner	R	
MJMTC1	MJM49462201	Tank, Cyclone	R	
MJMTC1	4838FI1432E	Tank, Dust	R	

R : SERVICE PARTS

