

User's Guide

W2086T

Make sure to read the **Important Precautions** before using the product. Keep the User's Guide(CD) in an accessible place for future reference.

See the label attached on the product and give the information to your dealer when you ask for service.

This unit has been engineered and manufactured to ensure your personal safety, however improper use may result in potential electrical shock or fire hazards. In order to allow the proper operation of all safeguards incorporated in this display, observe the following basic rules for its installation, use, and servicing.

On Safety

Use only the power cord supplied with the unit. In case you use another power cord, make sure that it is certified by the applicable national standards if not being provided by the supplier. If the power cable is faulty in any way, please contact the manufacturer or the nearest authorized repair service provider for a replacement.

The power supply cord is used as the main disconnection device. Ensure that the socket-outlet is easily accessible after installation.

Operate the display only from a power source indicated in the specifications of this manual or listed on the display. If you are not sure what type of power supply you have in your home, consult with your dealer.

Overloaded AC outlets and extension cords are dangerous. So are frayed power cords and broken plugs. They may result in a shock or fire hazard. Call your service technician for replacement.

As long as this unit is connected to the AC wall outlet, it is not disconnected from the AC power source even if the unit is turned off.

Do not Open the Display:

- There are no user serviceable components inside.
- There are Dangerous High Voltages inside, even when the power is OFF.
- Contact your dealer if the display is not operating properly.

To Avoid Personal Injury :

- Do not place the display on a sloping shelf unless properly secured.
- Use only a stand recommended by the manufacturer.
- Do not drop an object on or apply impact to the product. Do not throw any toys or objects on the product screen.

It can cause injury to human, problem to product and damage the display.

To Prevent Fire or Hazards:

- Always turn the display OFF if you leave the room for more than a short period of time. Never leave the display ON when leaving the house.
- Keep children from dropping or pushing objects into the display's cabinet openings. Some internal parts carry hazardous voltages.
- Do not add accessories that have not been designed for this display.
- When the display is to be left unattended for an extended period of time, unplug it from the wall outlet.
- In the presence of thunder and lightning, never touch the power cord and signal cable because it can be very dangerous. It can cause electric shock.

On Installation

Do not allow anything to rest upon or roll over the power cord, and do not place the display where the power cord is subject to damage.

Do not use this display near water such as near a bathtub, washbowl, kitchen sink, laundry tub, in a wet basement, or near a swimming pool.

Displays are provided with ventilation openings in the cabinet to allow the release of heat generated during operation. If these openings are blocked, built-up heat can cause failures which may result in a fire hazard. Therefore, NEVER:

- Block the bottom ventilation slots by placing the display on a bed, sofa, rug, etc.
- Place the display in a built-in enclosure unless proper ventilation is provided.
- Cover the openings with cloth or other material.
- Place the display near or over a radiator or heat source.

Do not rub or strike the Active Matrix LCD with anything hard as this may scratch, mar, or damage the Active Matrix LCD permanently.

Do not press the LCD screen with your finger for a long time as this may cause some afterimages.

Some dot defects may appear as Red, Green or Blue spots on the screen. However, this will have no impact or effect on the display performance.

If possible, use the recommended resolution to obtain the best image quality for your LCD display. If used under any mode except the recommended resolution, some scaled or processed images may appear on the screen. However, this is characteristic of the fixed-resolution LCD panel.

Leaving a fixed image on the screen for a long time may cause damage to the screen and cause image burn-in. Make sure to use a screen saver on the product. Burn-in and related problems are not covered by the warranty on this product.

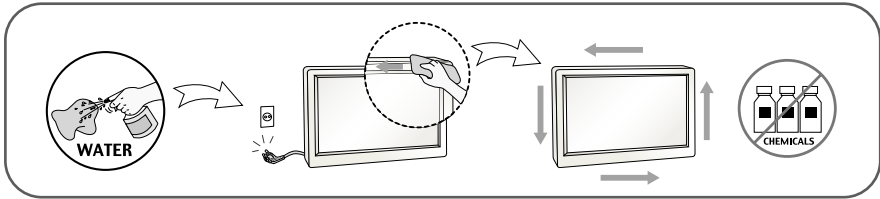
Do not shock or scratch the front and sides of the screen with metallic objects. Otherwise, it may cause damage to the screen.

Make sure the panel faces forward and hold it with both hands to move. If you drop the product, the damaged product can cause electric shock or fire. Contact an authorized the service center for repair.

Avoid high temperatures and humidity.

On Cleaning

- Unplug the display before cleaning the face of the display screen.
- Use a slightly damp (not wet) cloth. Do not use an aerosol directly on the display screen because over-spraying may cause electrical shock.
- When cleaning the product, unplug the power cord and scrub gently with a soft cloth to prevent scratching. Do not clean with a wet cloth or spray water or other liquids directly onto the product. An electric shock may occur. (Do not use chemicals such as benzene, paint thinners or alcohol)
- Spray water onto a soft cloth 2 to 4 times, and use it to clean the front frame; wipe in one direction only. Too much moisture may cause staining.



On Repacking

- Do not throw away the carton and packing materials. They make an ideal container in which to transport the unit. When shipping the unit to another location, repack it in its original material.

On Disposal (Only, Hg lamp used LCD Monitor)

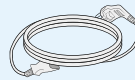
- The fluorescent lamp used in this product contains a small amount of mercury.
- Do not dispose of this product with general household waste.
- Disposal of this product must be carried out in accordance to the regulations of your local authority.

!!! Thank for selecting LGE products !!!

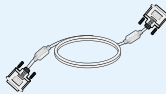
- Please make sure the following items are included with your monitor. If any items are missing, contact your dealer.



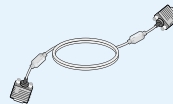
User's Guide/Cards



Power Cord
(Depending on the country)



DVI-D Signal Cable
(This feature is not available
in all countries.)



15-pin D-Sub Signal Cable
(To set it up, this signal cable may
be attached to this product before
shipping out.)



Cable Holder
(This feature is not available
in all models.)

IMPORTANT

- This accessories may look different from those shown here.
- User must use shielded signal interface cables (D-sub 15 pin cable, DVI cable) with ferrite cores to maintain standard compliance for the product.

Connecting the Display

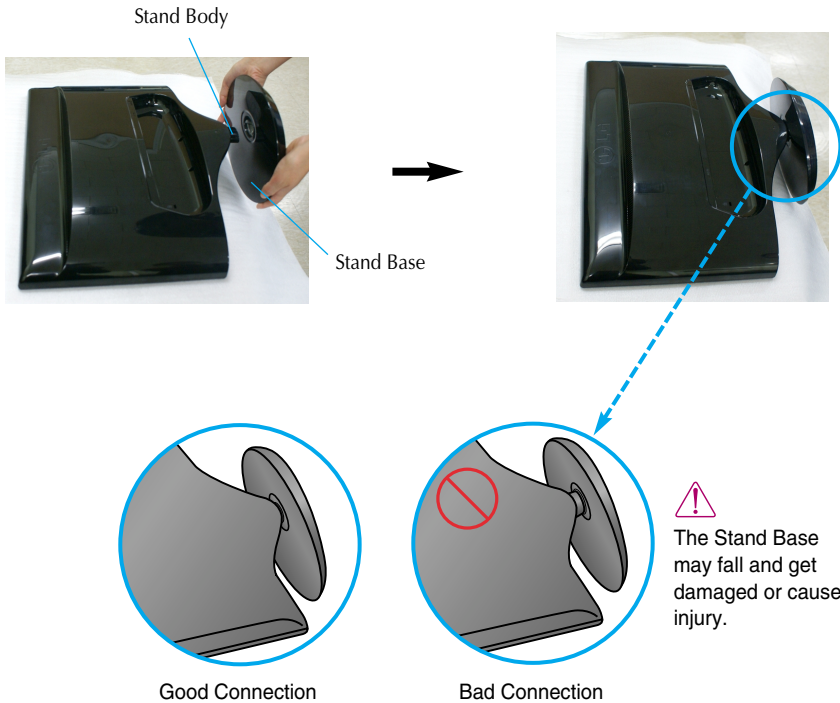
- Before setting up the monitor, ensure that the power to the monitor, the computer system, and other attached devices is turned off.

Connecting and Disassembling the stand

1. Place the monitor face down on the soft cloth.



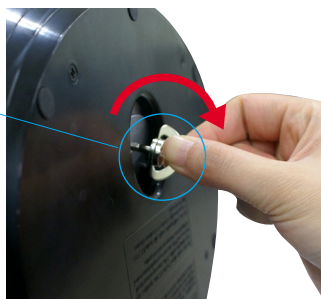
2. Assemble the Stand Base into the Stand Body in the correct direction. Make sure you push the Stand Base until the end.



Connecting the Display

- 3.** Turn the screw to the right to fix the Stand Body to the Stand Base.

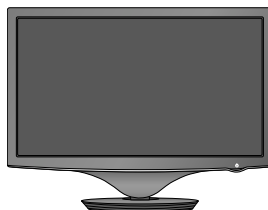
Screw
Turn the screw
by using the
screw handle.



- 4.** Then fold the screw handle flat.



- 5.** Once assembled take the monitor up carefully and face the front side.



- 6.** To disconnect the Stand Base from the Stand Body, unfold the screw handle and turn it to the left.



IMPORTANT

- This picture depicts the general model of connection. Your monitor may differ from the items shown in the picture.
- Do not carry the product upside down holding only the stand base. The product may fall and get damaged or cause injury.

Connecting the Display

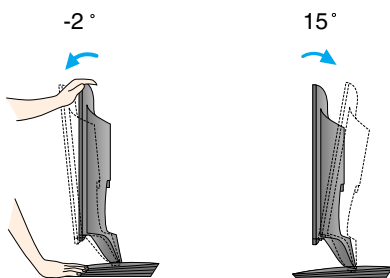
- Before setting up the monitor, ensure that the power to the monitor, the computer system, and other attached devices is turned off.

Positioning your display

After installation, adjust the angle as shown below.

1. Adjust the position of the panel in various ways for maximum comfort.

- Tilt Range : -2° ~ 15°



- Do not touch or press the screen when adjusting the angle of the monitor.
- When adjusting the angle of the screen, do not put your finger(s) in between the head of the monitor and the stand body. You can hurt your finger(s).



ERGONOMIC

- It is recommended that in order to maintain an ergonomic and comfortable viewing position, the forward tilt angle of the monitor should not exceed 5 degrees.

Connecting with the PC

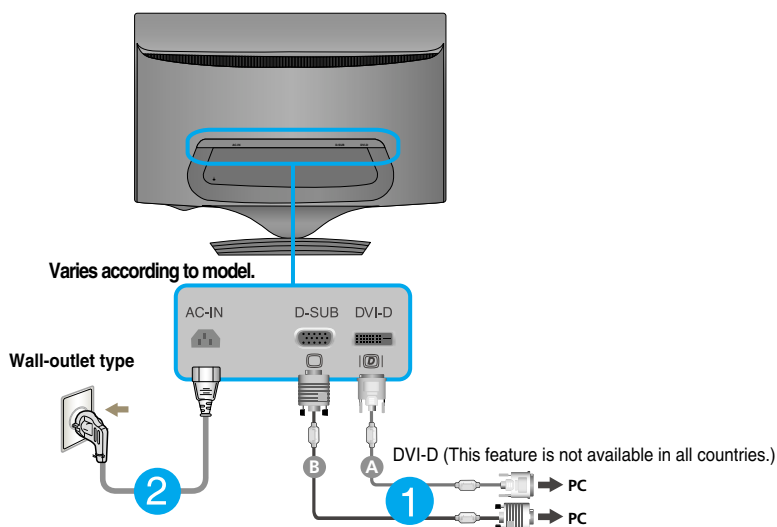
1. Before setting up the monitor, ensure that the power to the monitor, the computer system, and other attached devices is turned off.
2. Connect signal input cable ① and power cord ② in order, then tighten the screw of the signal cable.

Ⓐ Connect DVI-D(Digital signal) Cable

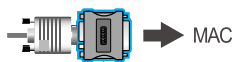
Ⓑ Connect D-sub(Analog signal) Cable

NOTE

- This is a simplified representation of the rear view.
- This rear view represents a general model; your display may differ from the view as shown.



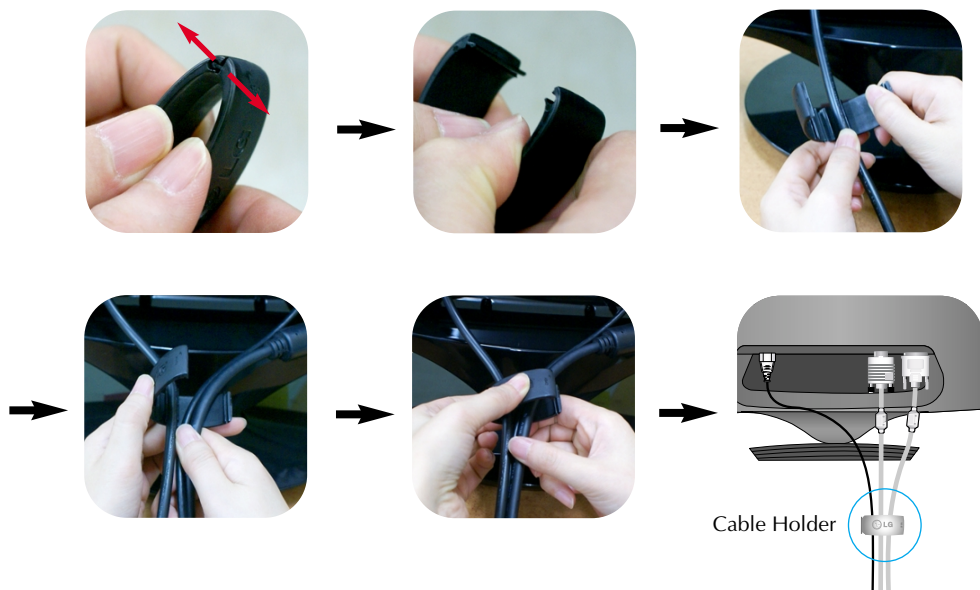
When using a D-Sub signal input cable connector for Macintosh




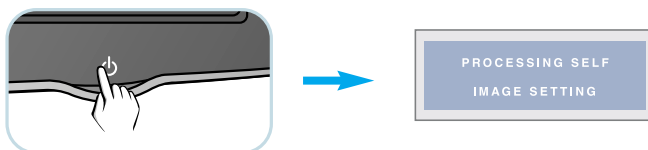
Mac adapter : For Apple Macintosh use, a separate plug adapter is needed to change the 15 pin high density (3 row) D-sub VGA connector on the supplied cable to a 15 pin 2 row connector.

Connecting the Display

3. Gather the cables together and use the Cable Holder to arrange them as shown in the picture.



4. Press the Power Button () on the front panel to turn the power on. When monitor power is turned on, the '**Self Image Setting Function**' is executed automatically. (Only Analog Mode)

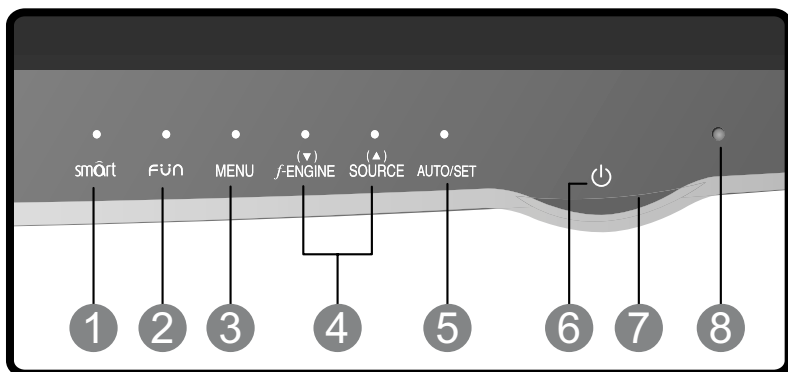


NOTE

'Self Image Setting Function'? This function provides the user with optimal display settings. When the user connects the monitor for the first time, this function automatically adjusts the display to optimal settings for individual input signals.

'AUTO/SET' Function? When you encounter problems such as blurry screen, blurred letters, screen flicker or tilted screen while using the device or after changing screen resolution, press the AUTO/SET function button to improve resolution.

Front Panel Controls



-
- 1 smArt Button** Use this button to enter **CINEMA MODE**, **AUTO BRIGHT**, **TIME CONTROL**, **LIVE SENSOR** or **SMART** menus.
For more information, refer to page 15.

-
- 2 FUn Button** Use this button to enter **EZ ZOOMING**, **4:3 IN WIDE** or **PHOTO EFFECT** menus.
For more information, refer to page 16.

-
- 3 MENU Button** Use this button to enter or exit the On Screen Display.

OSD LOCKED/UNLOCKED

This function allows you to lock the current control settings, so that they cannot be inadvertently changed. Press and hold the **MENU button** for several seconds. The message "**OSD LOCKED**" should appear.

You can unlock the OSD controls at any time by pushing the **MENU button** for several seconds. The message "**OSD UNLOCKED**" should appear.



4 ▼ ▲ Buttons

Use these buttons to select or adjust functions in the On Screen Display.

f•ENGINE ▼

Use this function to select optimal image conditions in accordance with the surrounding environment (Brightness, Image type).

For more information, refer to page 17.



SOURCE ▲ (SOURCE Hot key)

When two input signals are connected, you can select the input signal (D-SUB/DVI) you want. When only one signal is connected, it is automatically detected. The default setting is D-Sub.

5 AUTO/SET Button

Use this button to enter a selection in the On Screen Display.

AUTO IMAGE ADJUSTMENT

When adjusting your display settings, always press the **AUTO/SET** button before entering the On Screen Display(OSD). (Only Analog Mode)

This will automatically adjust your display image to the ideal settings for the current screen resolution size (display mode).



The best display mode is
1600 x 900

6 Power Button

Use this button to turn the display on or off.

7 Power Indicator

The power indicator stays red if the display is running properly (On Mode). If the display is in Sleep Mode (Energy Saving), the power indicator is blinking red.

8 Light Sensor

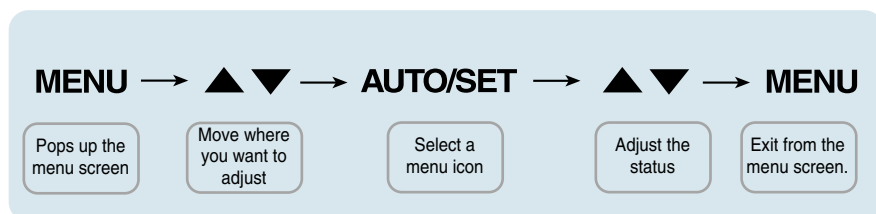
This is the sensor to measure the external brightness. Makes the screen brighter or darker, depending on the surrounding brightness, when AUTO BRIGHT is set to ON. The default setting is OFF.

Screen Adjustment

Making adjustments to the image size, position and operating parameters of the display is quick and easy with the On Screen Display Control system.

A short example is given below to familiarize you with the use of the controls. The following section is an outline of the available adjustments and selections you can make using the OSD.

To make adjustments in the On Screen Display, follow these steps:



- 1 Press the **MENU Button**, then the main menu of the OSD appears.
- 2 To access a control, use the **▼ or ▲ Buttons**. When the icon you want becomes highlighted, press the **AUTO/SET Button**.
- 3 Use the **▼ / ▲ Buttons** to adjust the image to the desired level.
Use the **AUTO/SET Button** to select other sub-menu items.
- 4 Press the **MENU Button** once to return to the main menu to select another function. Press the **MENU Button** twice to exit from the OSD.

On Screen Display(OSD) Selection and Adjustment

The following table indicates all the On Screen Display control, adjustment, and setting menus.

* : Analog Input only

Main menu	Sub-menu	Description
CINEMA MODE		To focus on the moving picture selected
AUTO BRIGHT		To control screen brightness automatically
TIME CONTROL		To notify the user of a specified time
LIVE SENSOR		To turn the live sensor of the touch button LED on or off
SMART		To adjust the SMART button menus
EZ ZOOMING		To adjust the resolution
4:3 IN WIDE		To adjust the image size
PHOTO EFFECT	NORMAL GAUSSIAN BLUR SEPIA MONOCHROME	To adjust the screen color mode
F-ENGINE	MOVIE INTERNET USER NORMAL DEMO	To select or customize desired image settings

On Screen Display(OSD) Selection and Adjustment

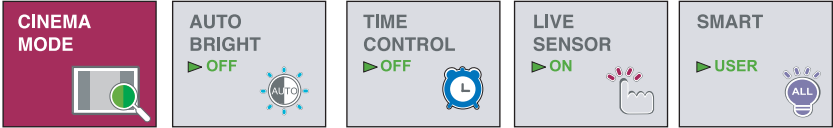
PICTURE	BRIGHTNESS	To adjust the brightness, contrast and gamma of the screen
	CONTRAST	
	GAMMA	
COLOR	PRESET (sRGB / 6500K / 9300K)	To customize the color of the screen
	RED	
	GREEN	
	BLUE	
TRACKING	* HORIZONTAL	To adjust the position of the screen
	* VERTICAL	
	* CLOCK	To improve the clarity and stability of the screen
	* PHASE	
SETUP	SHARPNESS	
	LANGUAGE	To customize the screen status for a user's operating environment
	OSD POSITION (HORIZONTAL / VERTICAL)	
	* WHITE BALANCE	
	RTC	
	POWER INDICATOR	
	FACTORY RESET	

NOTE


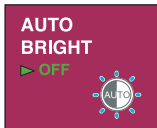
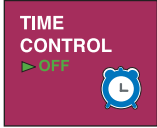
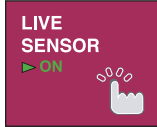

- The order of icons may differ depending on the model (13~21).

On Screen Display(OSD) Selection and Adjustment

- ■ ■ The OSD screen will appear when you press the smArT button on the front of the monitor.

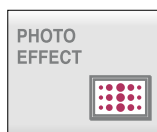
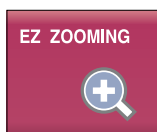


■ **MENU** : Exit , ■ **▼ ▲** : Move, ■ **SET** : Select

Main menu	Description
	<p>CINEMA MODE To focus on the moving picture selected. This function adjusts the brightness of areas other than the user-selected area to provide an environment and image quality optimized for videos or moving picture on the web browser.</p> <p>* This function is operated only if the 'forteManager' is installed to PC.</p>
	<p>AUTO BRIGHT To control screen brightness automatically. When ON is selected, this function adjusts the screen brightness automatically, depending on the surrounding environment, to provide optimal viewing conditions. When OFF is selected, this function is turned off.</p>
	<p>TIME CONTROL To notify the user of a specified time. This function notifies the user that a user-specified time (1 or 2 hours) has passed, which is done by displaying the Alarm OSD and the LED blinking.</p> <p>Time Options: OFF/1HOUR/2HOURS</p>
	<p>LIVE SENSOR To turn the live sensor of the touch button LED ON or OFF. This function senses the user's fingers and turns on the button LEDs before users press the buttons, for easier operation.</p> <p>* LED may start to work when an electrical environment is formed (i.e. human body proximity).</p>
	<p>SMART To adjust the SMART button menus. This function adjusts AUTO BRIGHT, TIME CONTROL and LIVE SENSOR.</p> <p>When ON is selected, AUTO BRIGHT and LIVE SENSOR are turned on and TIME CONTROL is set to 1HOUR. When OFF is selected, all these functions are turned off. When AUTO BRIGHT, TIME CONTROL and LIVE SENSOR are set individually, each setting is changed to USER automatically.</p>

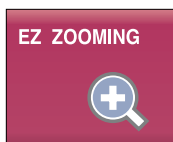
On Screen Display(OSD) Selection and Adjustment

- ■ ■ The OSD screen will appear when you press the **FUN** button on the front of the monitor.



- **MENU** : Exit
- **▼ ▲** : Move
- **SET** : Select

Main menu	Description
-----------	-------------



EZ ZOOMING

To select the display resolution.

When you select 'EZ ZOOMING' in OSD, display resolution goes one step down so characters and images look bigger. When you select EZ ZOOMING once again, it goes back to the original resolution.

* This function is operated only if the 'forteManager' is installed to PC.



4:3 IN WIDE

To select the image size of the screen.



WIDE



4:3



- **WIDE**  : Switch to full screen mode according to input image signal.
- **4:3**  : Change the input image signal ratio to 4:3.



PHOTO EFFECT

Use the AUTO/SET button to go to sub-menu.



To select the color effects of the screen.

• NORMAL

The PhotoEffect function is disabled.

• GAUSSIAN BLUR

This menu changes the screen to be more colorful and smoother.

• SEPIA

This menu changes the screen to be Sepia tone (brown color).

• MONOCHROME

This menu changed the screen to be Gray tone (black-and-white Picture) .



NORMAL



GAUSSIAN BLUR



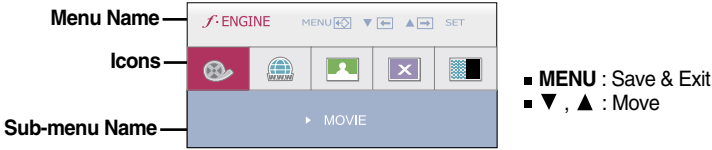
SEPIA



MONOCHROME

On Screen Display(OSD) Selection and Adjustment

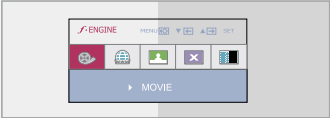
- The OSD screen will appear when you press the **f-ENGINE** button on the front of the monitor.



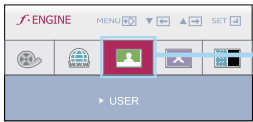
F-ENGINE

When the F-ENGINE is executed, two kinds of tones are displayed as shown in the image. The active state is to the left and the inactive state is to the right side of the screen. Select the function you want and press the [MENU] button to save the setting.

Active state Inactive state



Main menu	Sub menu	Description
	MOVIE	This feature lets you easily select the best desired image condition optimized to the environment (ambient illumination, image types etc).
	INTERNET	MOVIE: For animation images in videos or movies INTERNET: For text images (Word processing etc.)

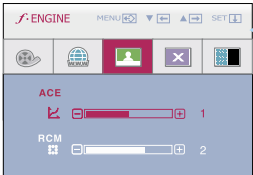


USER

USER

You can manually adjust ACE or RCM.
You can save or restore the adjusted value even when using a different condition.

To adjust the **USER** sub-menu function, press the **AUTO/SET** Button



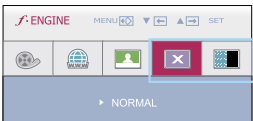
- MENU : Exit
- ▼ : Decrease
- ▲ : Increase
- SET : Select another sub-menu

- **ACE** (Adaptive Clarity Enhancer): Selects the clarity mode.

	0	Not applied
	1	Weak clarity and luminosity contrast.
	2	Strong clarity and luminosity contrast.

- **RCM** (Real Color Management): Selects the color mode.

	0	Not applied		2	Salmon color tone
	1	Green enhance		3	Color Enhance



NORMAL

This is under normal operating conditions.

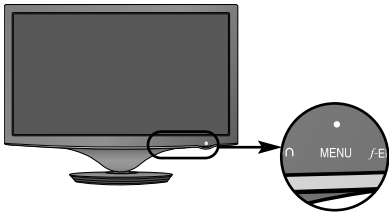
* Normal mode is when f-ENGINE is turned off.

DEMO

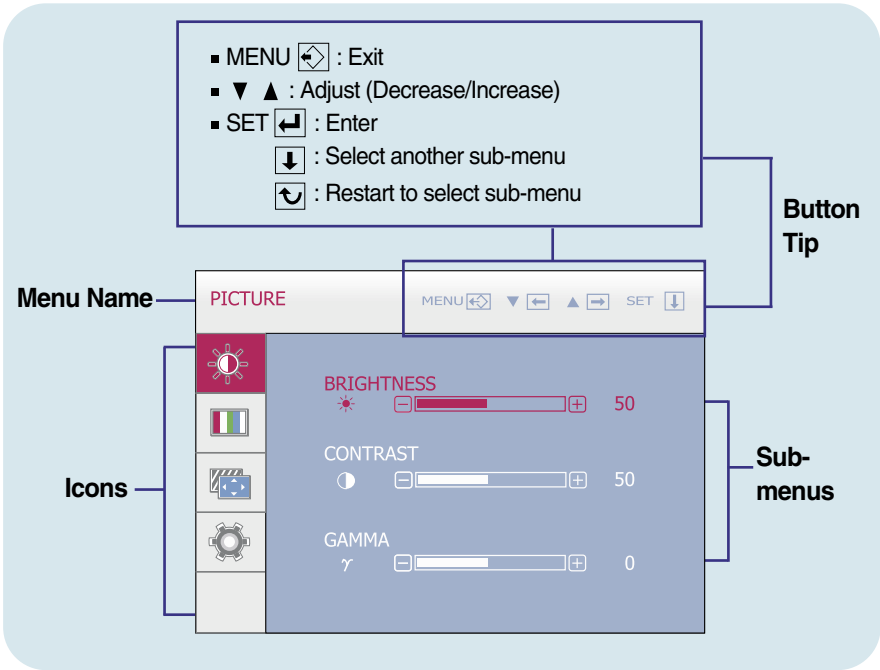
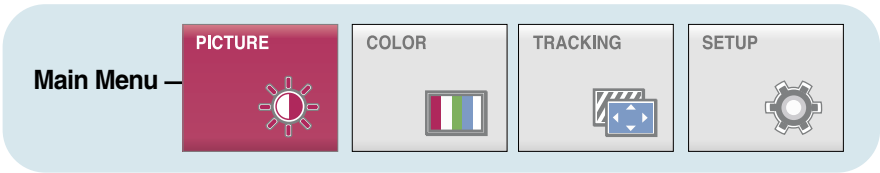
This is used for advertising in the store. The screen will be divided to show the standard mode on the left and video mode on the right so that the consumers can check the difference after applying the video mode.

On Screen Display(OSD) Selection and Adjustment

- You were introduced to the procedure of selecting and adjusting an item using the OSD system. Listed below are the icons, icon names, and icon descriptions of the all items shown on the Menu.



Press the **MENU** Button, then the main menu of the OSD appears.



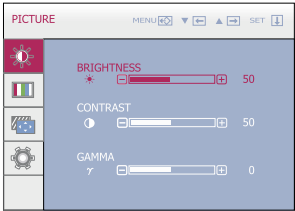
NOTE

- OSD (On Screen Display) menu languages on the monitor may differ from the manual.

Main menu	Sub menu	Description
-----------	----------	-------------



PICTURE

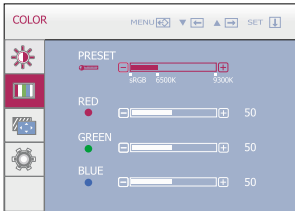





- BRIGHTNESS** To adjust the brightness of the screen.
- CONTRAST** To adjust the contrast of the screen.
- GAMMA** Set your own gamma value. : -50 / 0 / 50
On the monitor, high gamma values display whitish images and low gamma values display blackish images.

- **MENU** : Exit
- ▼ : Decrease
- ▲ : Increase
- **SET** : Select another sub-menu




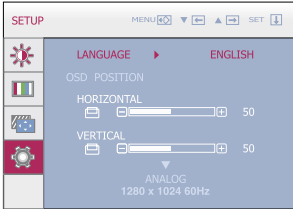
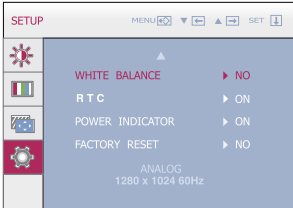
COLOR



- PRESET** Select the screen color.
 - sRGB: Set the screen color to fit the sRGB standard color specification.
 - 6500K: Slightly reddish white.
 - 9300K: Slightly bluish white.
-  **RED** Set your own red color levels.
-  **GREEN** Set your own green color levels.
-  **BLUE** Set your own blue color levels.

- **MENU** : Exit
- ▼ : Decrease
- ▲ : Increase
- **SET** : Select another sub-menu

Main menu	Sub menu	Description
<div><div>TRACKING</div><div></div></div>	<div>TRACKING</div>	
<div><div>TRACKING</div><div><div><div></div><div></div><div></div><div></div></div><div><div>HORIZONTAL</div><div><div><div></div><div></div></div><div>50</div></div></div><div><div>VERTICAL</div><div><div><div></div><div></div></div><div>50</div></div></div></div></div>	<div>HORIZONTAL</div>	To move image left and right.
	<div>VERTICAL</div>	To move image up and down.
	<div>CLOCK</div>	To minimize any vertical bars or stripes visible on the screen background. The horizontal screen size will also change.
<div><div>TRACKING</div><div><div><div></div><div></div><div></div><div></div></div><div><div>CLOCK</div><div><div><div></div><div></div></div><div>50</div></div></div><div><div>PHASE</div><div><div><div></div><div></div></div><div>50</div></div></div><div><div>SHARPNESS</div><div><div><div></div><div></div></div><div>5</div></div></div></div></div>	<div>PHASE</div>	To adjust the focus of the display. This item allows you to remove any horizontal noise and clear or sharpen the image of characters.
<div><div><div>■ MENU</div><div>▼</div><div>▲</div><div>■ SET</div></div><div><div>: Exit</div><div>: Decrease</div><div>: Increase</div><div>: Select another sub-menu</div></div></div>	<div>SHARPNESS</div>	To adjust the clearness of the screen.

Main menu	Sub menu	Description
	SETUP	
	LANGUAGE OSD POSITION	To choose the language in which the control names are displayed. To adjust position of the OSD window on the screen.
	WHITE BALANCE	If the output of the video card is different the required specifications, the color level may deteriorate due to video signal distortion. Using this function, the signal level is adjusted to fit into the standard output level of the video card in order to provide the optimal image. Activate this function when white and black colors are present in the screen.
<ul style="list-style-type: none">■ MENU : Exit■ ▼ : Adjust■ ▲ : Adjust■ SET : Select another sub-menu	R T C	If you set ON , you enable the Response Time Control function and reduce the afterimage of the screen. If you set OFF , you disenable the Response Time Control function and operate at panel response time.
	POWER INDICATOR	Use this function to set the power indicator on the front side of the monitor to ON or OFF . If you set OFF , it will go off. If you set ON at any time, the power indicator will automatically be turned on.
	FACTORY RESET	Restore all factory default settings except "LANGUAGE." Press the ▲ , ▼ buttons to reset immediately.

NOTE

If this does not improve the screen image, restore the factory default settings. If necessary, execute the white balance function again. This function will be enabled only when the input signal is an analog signal.

Check the following before calling for service.

No image appears	
● Is the power cord of the display connected?	<ul style="list-style-type: none"> • Check and see if the power cord is connected properly to the power outlet.
● Is the power indicator light on?	<ul style="list-style-type: none"> • Press the Power button.
● Is the power on and the power indicator red?	<ul style="list-style-type: none"> • Adjust the brightness and the contrast.
● Is the power indicator blinking?	<ul style="list-style-type: none"> • If the display is in power saving mode, try moving the mouse or pressing any key on the keyboard to bring up the screen. • Try to turn on the PC.
● Do you see an "OUT OF RANGE" message on the screen?	<ul style="list-style-type: none"> • This message appears when the signal from the PC (video card) is out of horizontal or vertical frequency range of the display. See the 'Specifications' section of this manual and configure your display again.
● Do you see a "CHECK SIGNAL CABLE" message on the screen?	<ul style="list-style-type: none"> • This message appears when the signal cable between your PC and your display is not connected. Check the signal cable and try again.

Do you see a "OSD LOCKED" message on the screen?	
● Do you see "OSD LOCKED" when you push MENU button?	<ul style="list-style-type: none"> • You can secure the current control settings, so that they cannot be inadvertently changed. You can unlock the OSD controls at any time by pushing the MENU button for several seconds: the message "OSD UNLOCKED" will appear.

Display image is incorrect

- | | |
|---|--|
| <ul style="list-style-type: none">● Display Position is incorrect. | <ul style="list-style-type: none">• Press the AUTO/SET button to automatically adjust your display image to the ideal setting. If the results are unsatisfactory, adjust the image position using the H position and V position icon in the on screen display. |
| <ul style="list-style-type: none">● On the screen background, vertical bars or stripes are visible. | <ul style="list-style-type: none">• Press the AUTO/SET button to automatically adjust your display image to the ideal setting. If the results are unsatisfactory, decrease the vertical bars or stripes using the CLOCK icon in the on screen display. |
| <ul style="list-style-type: none">● Any horizontal noise appearing in any image or characters are not clearly portrayed. | <ul style="list-style-type: none">• Press the AUTO/SET button to automatically adjust your display image to the ideal setting. If the results are unsatisfactory, decrease the horizontal bars using the PHASE icon in the on screen display.• Check Control Panel --> Display --> Settings and adjust the display to the recommended resolution or adjust the display image to the ideal setting. Set the color setting higher than 24 bits (true color). |

IMPORTANT

- Check **Control Panel --> Display --> Settings** and see if the frequency or the resolution were changed. If yes, readjust the video card to the recommend resolution.
- If the recommended resolution (optimal resolution) is not selected, letters may be blurred and the screen may be dimmed, truncated or biased. Make sure to select the recommend resolution.
- The setting method can differ by computer and O/S (Operation System), and resolution mentioned above may not be supported by the video card performance. In this case, please ask to the computer or the video card manufacturer.

Display image is incorrect

- | | |
|--|---|
| <ul style="list-style-type: none">● The screen color is mono or abnormal. | <ul style="list-style-type: none">• Check if the signal cable is properly connected and use a screwdriver to fasten if necessary.• Make sure the video card is properly inserted in the slot.• Set the color setting higher than 24 bits (true color) at Control Panel - Settings. |
| <ul style="list-style-type: none">● The screen blinks. | <ul style="list-style-type: none">• Check if the screen is set to interlace mode and if yes, change it to the recommend resolution. |

Do you see an "Unrecognized monitor, Plug&Play (VESA DDC) monitor found" message?

- | | |
|---|---|
| <ul style="list-style-type: none">● Have you installed the display driver? | <ul style="list-style-type: none">• Be sure to install the display driver from the display driver CD (or diskette) that comes with your display. Or, you can also download the driver from our web site: http://www.lge.com.• Make sure to check if the video card supports Plug&Play function. |
|---|---|

Display	20 inches (50.8 cm) Flat Panel Active matrix-TFT LCD Anti-Glare coating Visible diagonal size : 50.8 cm 0.2766 x 0.2766 mm (Pixel Pitch)	
Sync Input	Horizontal Freq. Vertical Freq. Input Form	30 - 83 kHz (Automatic) 56 - 75 Hz (Automatic) Separate Sync. SOG (Sync On Green), Digital
Video Input	Signal Input Input Form	15 pin D-Sub Connector DVI-D Connector (Digital) RGB Analog (0.7 Vp-p/ 75 ohm), Digital
Resolution	Max Recommend	VESA 1600 x 900 @60 Hz VESA 1600 x 900 @60 Hz
Plug&Play	DDC 2B	
Power Consumption	On Mode Sleep Mode Off Mode	: 38 W(Typ.) ≤ 1 W ≤ 1 W
Dimensions & Weight	With Stand Width 48.91 cm / 19.26 inches Height 38.16 cm / 15.02 inches Depth 19.84 cm / 7.81 inches	Without Stand Width 48.91 cm / 19.26 inches Height 37.08 cm / 14.60 inches Depth 8.49 cm / 3.34 inches
	Weight(excl. packing) 4.6 kg (10.14 lbs)	
Range	Tilt : -2°~15°	
Power Input	AC 100-240V~ 50/60Hz 0.7A	
Environmental Conditions	Operating Conditions Temperature 10°C to 35 °C Humidity 10 % to 80 % non-Condensing Storage Conditions Temperature -20°C to 60 °C Humidity 5 % to 90 % non-Condensing	
Stand Base	Attached (), Detached (O)	
Power cord	Wall-outlet type	

NOTE

- Information in this document is subject to change without notice.

Preset Modes (Resolution)

Display Modes (Resolution)			Horizontal Freq. (kHz)	Vertical Freq. (Hz)
1	VGA	640 x 350	31.469	70
2	VGA	720 x 400	31.468	70
3	VESA	640 x 480	31.469	60
4	VESA	640 x 480	37.500	75
5	VESA	800 x 600	37.879	60
6	VESA	800 x 600	46.875	75
7	MAC	832 x 624	49.725	75
8	VESA	1024 x 768	48.363	60
9	VESA	1024 x 768	60.123	75
10	MAC	1152 x 870	68.681	75
11	MAC	1152 x 900	61.805	65
12	VESA	1280 x 1024	63.981	60
*13	VESA	1600 x 900	60.000	60

*Recommend Mode

Indicator

MODE	LED Color
On Mode	Red
Sleep Mode	Red Blinking
Off Mode	Off

Digitally yours ■■■■■■■■■■

