



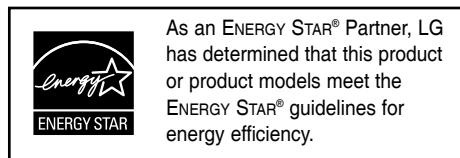
## XA14 (XA14, XAS14) MICRO Hi - Fi SYSTEM

Импортер LG Electronics RUS

Адрес импортера 143160 Российская Федерация, Московская область,  
Рузский район, сельское поселение Дороховское, 86 км. Минского шоссе, д.9

Адрес производителя : ВТРИК Интернешнл Трейдинг Ко, Лтд

Китай, провинция Гуандун, г. Гуанчжоу, Панью Боро, Даши таун,  
Шибай Индастриал роад, Тврек Девей Индастриал Гарден



ENERGY STAR® is a U.S. registered mark.



P/NO :MFL62759806

ENGLISH

РУССКИЙ

Қазақ тілі

O'ZBEK

УКРАЇНСЬКА

## Safety Precaution



**CAUTION**  
RISK OF ELECTRIC SHOCK  
DO NOT OPEN



**CAUTION:** TO REDUCE THE RISK OF ELECTRIC SHOCK DO NOT REMOVE COVER (OR BACK) NO USER-SERVICEABLE PARTS INSIDE REFER SERVICING TO QUALIFIED SERVICE PERSONNEL.



This lightning flash with arrowhead symbol within an equilateral triangle is intended to alert the user to the presence of uninsulated dangerous voltage within the product's enclosure that may be of sufficient magnitude to constitute a risk of electric shock to persons.



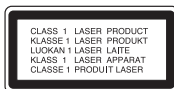
The exclamation point within an equilateral triangle is intended to alert the user to the presence of important operating and maintenance (servicing) instructions in the literature accompanying the product.

**WARNING:** TO PREVENT FIRE OR ELECTRIC SHOCK HAZARD, DO NOT EXPOSE THIS PRODUCT TO RAIN OR MOISTURE.

**WARNING:** Do not install this equipment in a confined space such as a book case or similar unit.

**CAUTION:** Do not block any ventilation openings. Install in accordance with the manufacturer's instructions.

Slots and openings in the cabinet are provided for ventilation and to ensure reliable operation of the product and to protect it from over heating. The openings be never be blocked by placing the product on a bed, sofa, rug or other similar surface. This product not be placed in a built-in installation such as a bookcase or rack unless proper ventilation is provided or the manufacturer's instruction has been adhered to.



**CAUTION:** This product employs a Laser System.

To ensure proper use of this product, please read this owner's manual carefully and retain it for future reference. Should the unit require maintenance, contact an authorized service center. Use of controls, adjustments or the performance of procedures other than those specified herein may result in hazardous radiation exposure.

To prevent direct exposure to laser beam, do not try to open the enclosure. Visible laser radiation when open. DO NOT STARE INTO BEAM.

**CAUTION:** The apparatus should not be exposed to water (dripping or splashing) and no objects filled with liquids, such as vases, should be placed on the apparatus.

**CAUTION concerning the Power Cord**

**Most appliances recommend they be placed upon a dedicated circuit;** That is, a single outlet circuit which powers only that appliance and has no additional outlets or branch circuits. Check the specification page of this owner's manual to be certain.

Do not overload wall outlets. Overloaded wall outlets, loose or damaged wall outlets, extension cords, frayed power cords, or damaged or cracked wire insulation are dangerous. Any of these conditions could result in electric shock or fire. Periodically examine the cord of your appliance, and if its appearance indicates damage or deterioration, unplug it, discontinue use of the appliance, and have the cord replaced with an exact replacement part by an authorized service. Protect the power cord from physical or mechanical abuse, such as being twisted, kinked, pinched, closed in a door, or walked upon. Pay particular attention to plugs, wall outlets, and the point where the cord exits the appliance. To disconnect power from the mains, pull out the mains cord plug. When installing the product, ensure that the plug is easily accessible.



### Disposal of your old appliance




1. When this crossed-out wheeled bin symbol is attached to a product it means the product is covered by the European Directive 2002/96/EC.
2. All electrical and electronic products should be disposed of separately from the municipal waste stream via designated collection facilities appointed by the government or the local authorities.
3. The correct disposal of your old appliance will help prevent potential negative consequences for the environment and human health.
4. For more detailed information about disposal of your old appliance, please contact your city office, waste disposal service or the shop where you purchased the product.

Notice (the date of the production of goods).

First figure ( of the left ) of series number means Year, next 2 figures - Month of the production of this goods.



## Contents

	Setting up	4
	Main unit	5
	Remote control	6
	Listening to CDs	7
	Listening to music from your portable player	7
	Listening to the radio	8
	Using an USB device	8
	Recording to USB	9
	Enjoying a pre-programmed sound field	9
	Troubleshooting	10
	Specifications	10

The making of unauthorized copies of copy-protected material, including computer programs, files, broadcasts and sound recordings, may be an infringement of copyrights and constitute a criminal offense. This equipment should not be used for such purposes.

**Be responsible**  
**Respect copyrights**

**Before connecting, operating or adjusting this product, please read this instruction booklet carefully and completely.**

## Setting up

### 1 Connection of the front speakers

Connect the speaker cables to the front speaker terminals.

Connect the black end of each wire to the terminals marked - (minus) and the other end to the terminals marked + (plus).

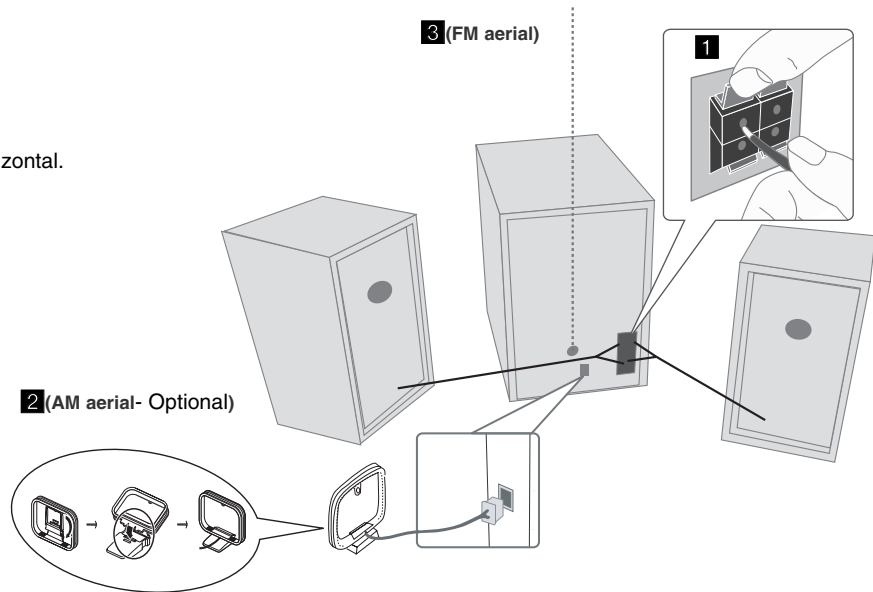
### 2 Fit the AM loop aerial to its stand (Optional)

Connect the AM loop aerial to the unit.

### 3 Stretch the FM aerial

The reception will be at its best when the end of the aerial is stretched to be in a straight line and horizontal.

### 4 Plug the power plug into a wall socket



### Be careful of the following


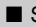


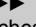
Be careful to make sure children not to put their hands or any objects into the \*speaker duct.

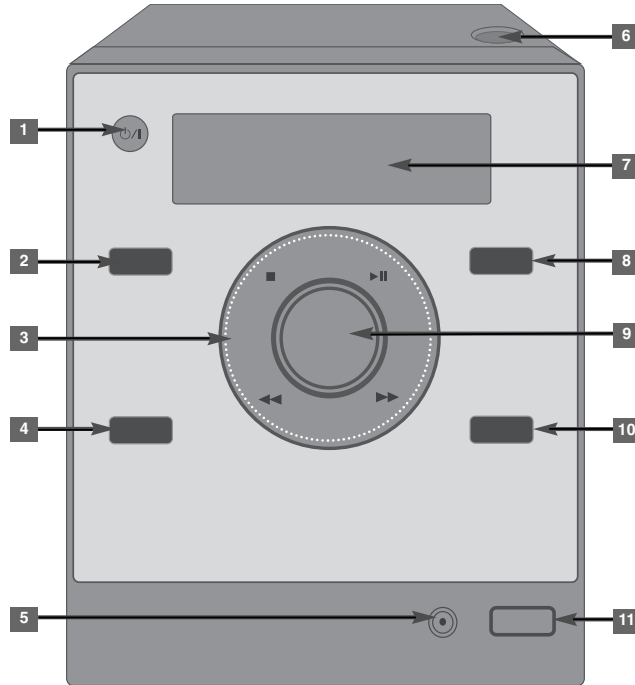
\*speaker duct : A hole for plentiful bass sound on speaker cabinet(enclosure).

### NOTES:

- If TV screen becomes discolored do not place speakers within 30cm from TV.
- Be sure to match the speaker cord to the appropriate terminal on the components: + to + and - to -. If the cords are reversed, the sound will be distorted and will lack base.

## Main Unit

- 1**  Power on/ off
- 2** **FUNCTION**  
Change the functions between CD, USB, PORTABLE, FM, AM (OPTIONAL).
- 3**  Stop  
 Playing/Pausing  
   
Searches backward or forward  
Skips to the previous/next track  
**TUNING(-)/ (+)**  
Selects the radio station  
**PRESET(-)/ (+)**  
Selects preset numbers
- 4** **PROGRAM/MEMORY**  
• On the CD/USB mode, you can make your own playlist.  
• On FM/AM mode, you can save radio stations.
- 5** **PORT. IN**  
The player can be used to play the music from many types of portable player.



- 6** **OPEN**  
You can use it when inserting or removing CDs.
- 7** **DISPLAY WINDOW**
- 8** **EQ.: Sound quality adjustment**  
You can choose sound impressions.
- 9** **VOLUME**  
Control the volume when using any function.
- 10** **REC.**  
Recording to USB
- 11** **USB Connector**

## Remote control

<b>POWER</b>	<b>POWER on/ off</b>
*	<b>This button is not available.</b>
<b>EQ</b>	<b>Sound quality adjustment.</b> You can choose sound impressions.

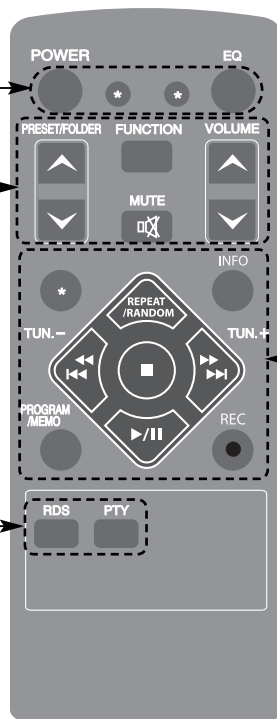
<b>PRESET/ FOLDER</b>	<b>Search for a folder of MP3/ WMA files</b> When a CD containing MP3/ WMA files in several folders is being played, press <b>PRESET/FOLDER</b> selects the folder you want to play. <b>Choose a 'preset number' for a radio station.</b>
---------------------------	---

<b>FUNCTION</b>	<b>Changes the functions.</b>
-----------------	-------------------------------

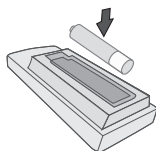
<b>MUTE</b>	<b>Temporarily stop the sound.</b> Press the button again to return to the sound.
-------------	--

<b>VOLUME</b>	<b>Controls the volume when using any function.</b>
---------------	---

<b>RDS/ PTY (Optional)</b>	<b>RDS (Radio Data System)</b> <b>Searches radio stations by radio type</b>
--------------------------------	--



*	<b>This button is not available.</b>
<b>PROGRAM /MEMO</b>	<b>For storing radio stations</b> If you have saved radio stations using <b>PROGRAM/MEMO</b> , you can scroll through them and select one. <b>Listens to your tracks in any order</b>
<b>INFO</b>	<b>See information about your music.</b> MP3/ WMA files often come with tags. The tag gives the Title, Artist, Album or Time information.
<b>● REC</b>	<b>Recording to USB</b>
<b>REPEAT /RANDOM</b>	Listens to your tracks repeatedly or randomly. (Only in CD/USB)
<b>⏮ ⏪ / ⏩ ⏭ TUN.(+)/(-)</b>	(Only USB/ CD/ Radio Function) Selects the radio station. Searches backward or forward Skips to the previous/next track
<b>▶/  </b>	Starts or pauses playback
<b>■</b>	Stops playback or recording



### Put the battery in the remote control

Make sure that the + (plus) and - (minus) on the battery (size AAA) match those on the remote control. Battery shall not be exposed to excessive heat such as sunshine, fire or the like.

## Listening to CDs

Audio CD and MP3/ WMA CD can be played back in this unit.

	ON UNIT	ON REMOTE
1. Open the CD door	OPEN	-
2. Insert the CD: Label facing up.	-	-
3. Close the CD door	OPEN	-
4. Select the CD function	FUNCTION	FUNCTION
5. Start the CD playing	▶	▶
6. To stop a CD playing	■	■

## Listening to CDs - More you can do

### Pausing or restarting a CD

- 1 Press ▶|| on the unit or ▶/|| on the remote control during playback.
- 2 Press this button again to resume play.

### Searching for a section within a track

Hold ◀◀/▶▶ on the unit or |◀◀ ◀◀/▶▶ ▶▶| on the remote control during playback and release it at the point you want to listen to.

### Skipping to another track (files)

Press ◀◀/▶▶ on the unit or |◀◀ ◀◀/▶▶ ▶▶| on the remote control.

### Creating your own playlist

You can play up to 20 tracks on a CD in order.

- 1 Insert a CD and wait for it to be read.
- 2 Press **PROGRAM/MEMORY** on the unit or **PROGRAM/MEMO** on the remote control in stop status.
- 3 Press ◀◀/▶▶ on the unit or |◀◀ ◀◀/▶▶ ▶▶| on the remote control to select a track.
- 4 Press **PROGRAM/MEMORY** (or **PROGRAM/MEMO**) again to save and select a next track. Repeat the step 3 -4.
- 5 Press ▶|| to play the programmed music files.
- 6 To clear your selection, press ■ twice.

## Listening to your tracks (files) repeatedly or randomly

- 1 Press **REPEAT/RANDOM** on the remote control repeatedly. Tracks will be played back repeatedly or randomly.
- 2 To return to normal playback, press it repeatedly to select [OFF].

### About MP3/ WMA

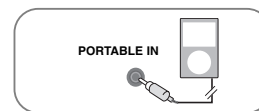
**MP3/WMA Disc compatibility with this unit is limited as follows:**

- Sampling Frequency : 32 - 48 kHz (MP3), 32 - 48 kHz (WMA)
- Bit rate : 32 - 320 kbps (MP3), 40 - 320 kbps (WMA)
- CD-R physical format should be "ISO 9660/ JOLIET"
- If you record MP3/WMA files using the software which cannot create a FILE SYSTEM, for example "Direct-CD" etc., it is impossible to playback MP3 files. We recommend that you use "Easy-CD Creator", which creates an ISO 9660 file system.
- Do not use special letters such as "/ : \* ? " < > " etc.
- At most 99 folders and 999 files are supported on the unit.
- You have to set the disc format option to [Mastered] in order to make the discs compatible with the LG players when formatting rewritable discs. When setting the option to Live File System, you cannot use it on LG players. (Mastered/ Live File System : Disc format system for Windows Vista)

## Listening to music from your portable player

The unit can be used to play the music from many types of portable player.

	ON UNIT	ON REMOTE
1. Connect the portable player to the <b>PORTABLE IN</b> connector of the unit.	-	-
2. Turn the power on.	⏻/	<b>POWER</b>
3. Select the <b>PORTABLE</b> function.	<b>FUNCTION</b>	<b>FUNCTION</b>
4. Turn on the portable player and start it playing.	-	-







## Recording to USB

You can record a various sound source to USB.

	ON UNIT	ON REMOTE
<b>1. Connect the USB device to the unit.</b>	-	-
<b>2. Select a mode in which you want to record.</b> Play back a sound source first.	FUNCTION	FUNCTION
<b>3. Start the recording:</b> "REC" is displayed.	REC.	● REC
<b>4. To stop recording, press</b>	■	■

## Recording to USB - More you can do

### To set recording bit rate and speed

- 1 Press **REC.** on the player or ● **REC** on the remote control for longer than 3 seconds.
- 2 Use ◀◀/▶▶ on the player or ◀◀◀◀/▶▶▶▶ on the remote control to select the bit rate among 96/128/192/256 Kbps. You can set the quality of the recorded file.
- 3 Press **REC.** or ● **REC** again to select the recording speed.
- 4 Use ◀◀/▶▶ or ◀◀◀◀/▶▶▶▶ to select a desired recording speed.  
**X 1 SPEED:** You can listen to music while recording it.  
**X 2 SPEED:** You can just recording the music file.
- 5 Press **REC.** or ● **REC** to finish the setting.

### NOTES :

On radio or portable mode, you cannot set the recording speed.

### Recording Music file in disc source to USB

#### One track recording -

If the USB recording is started during playback of the CD, the one track/ file would be recording into the USB.

#### All tracks recording -

If the USB recording on the CD stop status, all tracks/ files would be recording.

#### Program list recording -




USB records after creating your own program if you want to record the track you want. (Audio CD, MP3, WMA)

## Pausing recording

During recording, press ● **REC** to pause recording. Press ● **REC** to continue recording. (Only Radio, Portable)

## When you are recording, look out for the following

- When you stop recording, the file that has been recorded at that time will be stored.(Audio CD only)
- Do not remove the USB device or turn off the unit during USB recording. If not, an incomplete file may be made and not deleted on PC.
- If USB recording does not work, the message like "NO USB", "ERROR", "FULL" or "NO REC" is displayed on the display window.
- Multi card reader device or External HDD can not be used for USB recording.
- For a recorded file, the maximum size is about 512MB.
- You may not record more than 999files.
- **It'll be stored as follows.**

AUDIO CD	MP3/ WMA	The other sources
 CD_REC   TRK_001   TRK_002   :   :	 FILE_REC   (File name)   (File name)   :   :	 EXT_REC   AUDIO_001   AUDIO_002   :   :

## Enjoying a pre-programmed sound field

This system has a number of pre-set surround sound fields. You can select a desired sound mode by using **EQ.**

The displayed items for the Equalizer may be different depending on sound sources and effects.

ON DISPLAY	Description
<b>AUTO EQ</b>	Realizes the sound equalizer that is the most similar to the genre of which is included in the MP3 ID3 tag of song files.
<b>ROCK POP CLASSIC</b>	This program lends an enthusiastic atmosphere to the sound, giving you the feeling you are at an actual rock, pop, or classic concert.
<b>XDSS FLAT</b>	Reinforce the treble, bass and surround sound effect. You can enjoy the sound without equalizer effect.

## Troubleshooting

Symptom	Cause	Correction
<b>General</b>		
No power.	The power cord is not plugged in.	Plug in the power cord.
	Check whether electricity failed.	Check the condition by operating other electronic devices.
No sound.	Check whether you select right function.	Press <b>FUNCTION</b> and check the selected function.
<b>CD</b>		
The unit does not start playback.	An unplayable disc is inserted.	Insert a playable disc.
	The disc is dirty.	Clean the disc.
<b>Radio</b>		
Radio stations can't be tuned in properly.	The antenna is positioned poorly.	Attach an external aerial if necessary.
	The signal strength of the radio station is too weak.	Tune to the station manually.
	No stations have been preset or preset stations have been cleared (when tuning by scanning preset channels).	Preset some radio stations.
<b>Remote control</b>		
The remote control does not work properly.	The remote control is not pointed at the remote sensor of the unit.	Point the remote control at the remote sensor of the unit.
	The remote control is too far from the unit.	Operate the remote control within about 16 ft (5 m).
	There is an obstacle in the path of the remote control and the unit.	Remove the obstacle.
	The battery in the remote control is exhausted.	Replace the battery with new one.

## Specifications

<b>General</b>	
Power supply	Refer to main label.
Power consumption	Refer to main label.
Net Weight	1.68 kg
External dimensions (WxHxD)	150 x 205 x 212 mm
Operating temperature	5 °C to 35 °C
Operating humidity	5% to 85 %
<b>Tuner</b>	
FM Tuning Range	87.5 - 108.0 MHz or 87.50 - 108.00 MHz
AM Tuning Range (Optional)	522 - 1620 kHz 520 - 1710 kHz
<b>Amplifier</b>	
Output Power	5 W + 5 W
T.H.D	0.5 %
Frequency Response	60 Hz - 20 KHz
Signal-to-noise ratio	70 dB
<b>CD</b>	
Frequency response	40 Hz - 20 kHz
Signal-to-noise ratio	70 dB
Dynamic range	55 dB
<b>Speakers (XAS14F)</b>	
Type	1 Way 1 Speaker
Impedance	6 Ω
Rated Input Power	5 W
Max. Input Power	10 W
Net Dimensions (WxHxD)	130 x 205 x 156 mm
Net Weight (1EA)	0.9 kg

Designs and specifications are subject to change without notice.