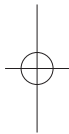




ENGLISH

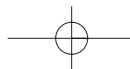
**MODEL: MCD104 (MCD104 -A0U/ MCS104F)
MCD204 (MCD204 -A0U/ MCS204F)**



Before connecting, operating or adjusting this product, please read this instruction booklet carefully and completely.



P/NO: MFL61543972



Safety Precaution



CAUTION: TO REDUCE THE RISK OF ELECTRIC SHOCK DO NOT REMOVE COVER (OR BACK) NO USER-SERVICEABLE PARTS INSIDE REFER SERVISING TO QUALIFIED SERVICE PERSONNEL.



This lightning flash with arrowhead symbol within an equilateral triangle is intended to alert the user to the presence of uninsulated dangerous voltage within the product's enclosure that may be of sufficient magnitude to constitute a risk of electric shock to persons.



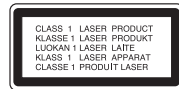
The exclamation point within an equilateral triangle is intended to alert the user to the presence of important operating and maintenance (servicing) instructions in the literature accompanying the product.

WARNING: TO PREVENT FIRE OR ELECTRIC SHOCK HAZARD, DO NOT EXPOSE THIS PRODUCT TO RAIN OR MOISTURE.

WARNING: Do not install this equipment in a confined space such as a book case or similar unit.

CAUTION: Do not block any ventilation openings. Install in accordance with the manufacturer's instructions.

Slots and openings in the cabinet are provided for ventilation and to ensure reliable operation of the product and to protect it from over heating. The openings be never be blocked by placing the product on a bed, sofa, rug or other similar surface. This product not be placed in a built-in installation such as a bookcase or rack unless proper ventilation is provided or the manufacturer's instruction has been adhered to.



CAUTION: This product employs a Laser System.

To ensure proper use of this product, please read this owner's manual carefully and retain it for future reference. Shall the unit require maintenance, contact an authorized service center. Use of controls, adjustments or the performance of procedures other than those specified herein may result in hazardous radiation exposure. To prevent direct exposure to laser beam, do not try to open the enclosure. Visible laser radiation when open. DO NOT STARE INTO BEAM.

CAUTION: The apparatus shall not be exposed to water (dripping or splashing) and no objects filled with liquids, such as vases, shall be placed on the apparatus.

CAUTION concerning the Power Cord

Most appliances recommend they be placed upon a dedicated circuit

That is, a single outlet circuit which powers only that appliance and has no additional outlets or branch circuits. Check the specification page of this owner's manual to be certain.

Do not overload wall outlets. Overloaded wall outlets, loose or damaged wall outlets, extension cords, frayed power cords, or damaged or cracked wire insulation are dangerous. Any of these conditions could result in electric shock or fire.

Periodically examine the cord of your appliance, and if its appearance indicates damage or deterioration, unplug it, discontinue use of the appliance, and have the cord replaced with an exact replacement part by an authorized service.

Protect the power cord from physical or mechanical abuse, such as being twisted, kinked, pinched, closed in a door, or walked upon. Pay particular attention to plugs, wall outlets, and the point where the cord exits the appliance.

To disconnect power from the mains, pull out the mains cord plug. When installing the product, ensure that the plug is easily accessible.




This device is equipped with a portable battery or accumulator.

Safe way to remove the battery or the battery from the equipment:

Remove the old battery or battery pack, follow the steps in reverse order than the assembly. To prevent contamination of the environment and bring on possible threat to human and animal health, the old battery or the battery put it in the appropriate container at designated collection points. Do not dispose of batteries or battery together with other waste. It is recommended that you use local, free reimbursement systems batteries and accumulators.

The battery shall not be exposed to excessive heat such as sunshine, fire or the like.

Contents

	Setting up	4
	Main Unit	5
	Remote control	6
	Listening to CDs	7
	Listening to music from your external device	7
	Listening to the radio	8
	Listening to the cassette tapes	8
	Using an USB device	9
	Enjoying a pre-programmed sound field	9
	Recording to USB	10
	Recording to TAPE	11
	Setting the Clock	11
	Troubleshooting	12
	Specifications	12

The making of unauthorized copies of copy-protected material, including computer programs, files, broadcasts and sound recordings, may be an infringement of copyrights and constitute a criminal offense. This equipment should not be used for such purposes.

Be responsible
Respect copyrights

Before connecting, operating or adjusting this product, please read this instruction booklet carefully and completely.

Setting up

1 Connection of the front speakers

Connect the speaker cables to the front speaker terminals.

Connect the black end of each wire to the terminals marked - (minus) and the other end to the terminals marked + (plus)

2 Fit the AM loop aerial to its stand (Optional)

Connect the AM loop aerial to the unit.

3 Stretch the FM aerial

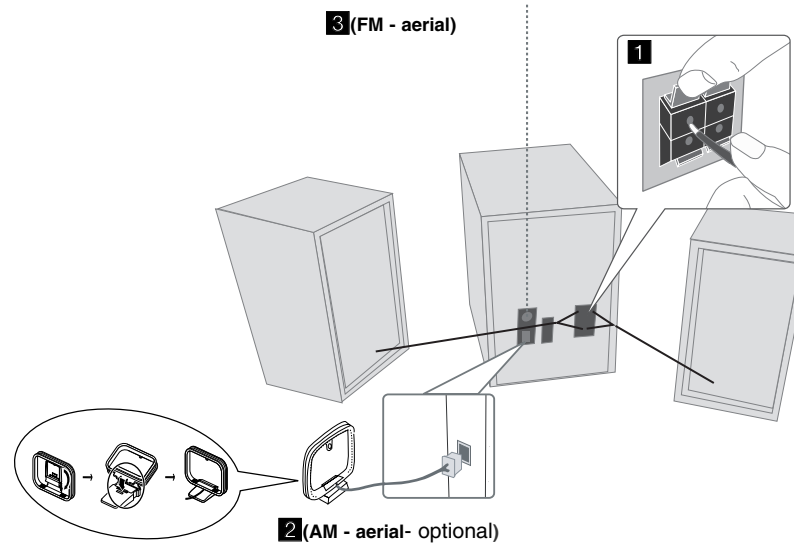
The reception will be at its best when the end of the aerial is stretched to be in a straight line and horizontal.

Be careful of the following

Be careful to make sure children not to put their hands or any objects into the
*Speaker duct.

*Speaker duct : A hole for plentiful bass sound on speaker cabinet(enclosure).

4

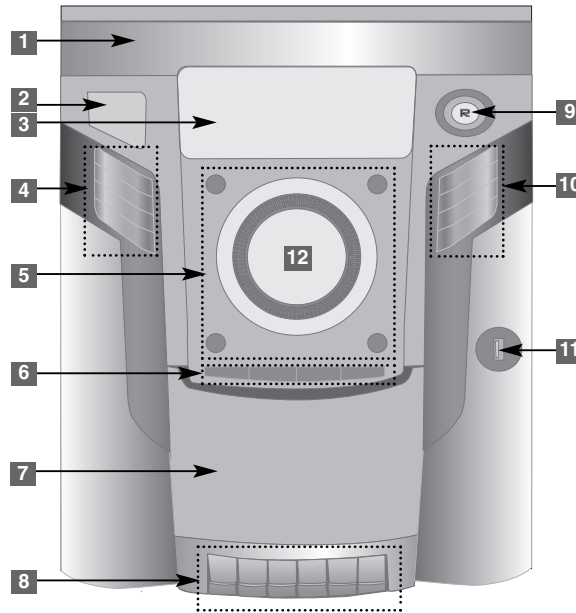


NOTES :

- If TV screen becomes discolored do not place speakers within 30cm from TV.
- Be sure to match the speaker cord to the appropriate terminal on the components : + to + and - to -. If the cords are reversed, the sound will be distorted and will lack base.

Main Unit

- 1** Disc tray
- 2** power on/off
- 3** Display window
- 4** **CLOCK**
For setting the clock and checking the time.
TIMER
With the **TIMER** function you can turn CD, USB play and TUNER reception on or off at a desired time.
ST./MONO
RDS/CDII/SET
- **RDS** (Optional)
- **CDII** Pauses
- **SET** Confirms the settings. (TIMER/CLOCK)
- 5** **DISC SKIP**
Choose a desired disc.
 OPEN/CLOSE
Open or close your CD door.
 PRESET +
 PRESET -
 TUNING +
 TUNING -
USB
You can select the USB function.
 STOP
- 6** Selects **TUNER** function.
Selects **CD** function.
Selects **AUX** function.
Selects **TAPE** function.



- 7** **Cassette door**
- 8** Use when playing a cassette tape.
 REC Recording
 PLAY Playing
 REW/ FF Searching
 STOP/ EJECT
 PAUSE
- 9** **R (USB REC.)**
- 10** **XDSS/MP3 OPT.**
- **XDSS**
Extreme Dynamic Sound System
Reinforce the treble, bass and surround effect.
- **MP3 OPT.**
Optimizes compressible MP3 files so that it improves the bass sound.
- EQ**
Sound quality adjustment
You can choose sound impression
LG EQ
You can choose fixed sound impression
DEMO
In power off state to demonstrate the function on display window.
- 11** **USB connector**
Connect a USB compatible device here.
- 12** **VOLUME** control

Remote control

POWER	POWER on/ off
EQ	Sound quality adjustment. You can choose sound impressions.
*	This button is not available.
D.SKIP	Select a desired CD

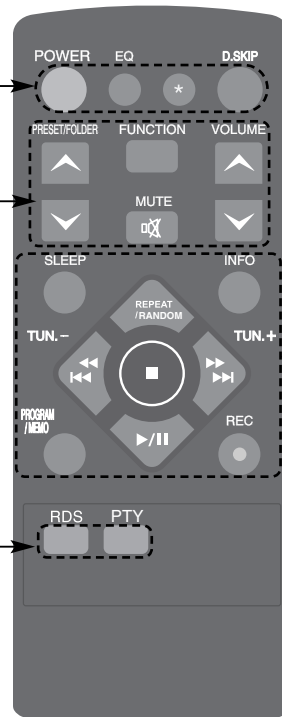
PRESET/ FOLDER	Search for a folder of MP3/ WMA files When a CD containing MP3/ WMA files in several folders is being played, press PRESET/ FOLDER selects the folder you want to play. Choose a 'preset number' for a radio station.
-----------------------	--

FUNCTION	Changes the functions.
-----------------	-------------------------------

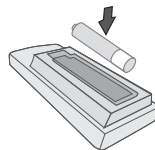
MUTE	Temporarily stop the sound. Press the button again to return to the sound.
-------------	--

VOLUME	Controls the volume when using any function.
---------------	---

RDS/ PTY (optional)	RDS (Radio Data System) Searchs radio stations by radio type
----------------------------	---



SLEEP	Fall asleep while listening to your unit . Press SLEEP one or more times to select delay time between 10 and 180 minutes. (Dimmer: Dim the display light)
PROGRAM /MEMO	For storing radio stations If you have saved radio stations using PROGRAM/MEMO , you can scroll through them and select one. Listens to your tracks in any order
INFO	See information about your music.
● REC	Recording (Recording to USB)
REPEAT /RANDOM	Listen to your tracks repeatedly or randomly. (Only in CD/ USB)
◀◀ ◀◀ / ▶▶ ▶▶	(Only USB/ CD/ Radio Function) Selects the radio station Search backward or Forward Skips to the previous/ next track
TUN.-/ +	
▶/ 	Starts or pauses playback
■	Stops playback or recording



Put the battery in the remote control

Make sure that the + (plus) and - (minus) on the battery (size AAA) match those on the remote control. Battery shall not be exposed to excessive heat such as sunshine, fire or the like.

Listening to CDs

Audio CD and MP3/ WMA CD can be played back in this unit.

	ON UNIT	ON REMOTE
1. Open the Disc tray	▲ OPEN/CLOSE	-
2. Select the CD	DISC SKIP	D.SKIP
3. Insert the CD: Label facing up.	-	-
4. Close the Disc tray	▲ OPEN/CLOSE	-
5. Select the CD function	CD	FUNCTION
6. Start the CD playing: For AUDIO CD, Playback starts automatically.	▶	▶/II
7. To stop a CD playing	■ STOP	■

Listening to CDs - More you can do

Pausing or restarting a CD

- 1 Press **CD/II** on the unit or **▶/II** on the remote control during playback.
- 2 Press this button again to resume play.

Searching for a section within a track

Hold **II << / >> II** on the unit or **II << / >> II** on the remote control during playback and release it at the point you want to listen to.

Skipping to another track (files)

Press **II << / >> II** on the unit or **II << / >> II** on the remote control.

Creating your own playlist

You can play up to 20 tracks on a CD in order.

- 1 Insert a CD and wait for it to be read.
- 2 Press **PROGRAM/MEMO** on the remote control in stop status.
- 3 Press **II << / >> II** on the unit or **II << / >> II** on the remote control to select a track.
- 4 Press **PROGRAM/MEMO** again to save and select a next track.
- 5 Press **▶** on the unit or **▶/II** on the remote control to play the programmed music files.
- 6 To clear your selection, press **■ STOP** (or **■**), **PROGRAM/MEMO** and then **■ STOP** (or **■**).

Listening to your tracks (files) repeatedly or randomly

- 1 Press **REPEAT/RANDOM** on the remote control repeatedly.
Tracks will be played back repeatedly or randomly.
- 2 To return to normal playback, press it repeatedly to select [OFF].

Resume play

- When you resume playback after stopping it, playback starts from the point playback stopped.
- When you Press **■ STOP** twice and then **▶**, the first song is played back.

About MP3/ WMA

MP3/WMA Disc compatibility with this unit is limited as follows

- Sampling Frequency : 32 - 48 (MP3/ WMA)
- Bit rate : 32 - 320 kbps (MP3), 40 - 320 kbps (WMA)
- CD-R physical format should be "ISO 9660/JOLIET"
- If you record MP3/WMA files using the software which cannot create a FILE SYSTEM, for example "Direct-CD" etc., it is impossible to playback MP3 files.
We recommend that you use "Easy-CD Creator", which creates an ISO 9660 file system.
- Do not use special letters such as "/ : * ? " < >" etc.
- Even if the total number of files on the disc has more than 1000, it will only be shown up to 999.

Listening to music from your external device

The unit can be used to play the music from many types of external device.

	ON UNIT	ON REMOTE
1. Connect the external device to the AUX IN connector of the unit. > If your TV has only one output for audio(MONO). connect it to the left(white) audio jack on the unit.	-	-
2. Turn the power on.	⏻/I	POWER
3. Select the AUX function.	AUX	FUNCTION
4. Turn on the external device and start it playing.	-	-

Listening to the radio

Make sure both the FM and AM (optional) aerials are connected.

	ON UNIT	ON REMOTE
1. Select FM or AM (optional)	TUNER	FUNCTION
2. Select the radio station	TUNING +/ -	TUN.- / TUN.+
3. To 'save' a radio station: A preset number will show in the display.	-	PROGRAM/MEMO
4. Select the preset number	PRESET+/-	PRESET / FOLDER
5. To confirm press: Up to 50 radio stations can be saved.	-	PROGRAM/MEMO
6. To select a 'saved' station	PRESET+/-	PRESET / FOLDER

Listening to the radio - More you can do

Looking for radio stations automatically

- 1 Press and hold **TUNING + / TUNING -** on the unit or **TUN.- / TUN.+** on the remote control for more than 0.5 second.
- 2 The tuner will scan automatically and stop when it finds a radio station.

Deleting all the saved stations

- 1 Press and hold **PROGRAM/MEMO** on the remote control for two seconds. "ERASE ALL" shows.
- 2 Press **PROGRAM/MEMO** on the remote control to erase all the saved stations.

Improving poor FM reception

Press **ST./MONO** on the unit or **▶/||** on the remote control. This will change the tuner from stereo to mono and usually improve the reception.

See information about your radio stations - OPTIONAL

The FM tuner is supplied with the Radio Data System (RDS) facility. This shows the letters **RDS** on the display, plus information about the radio station being listened to. Press **RDS** on the remote control several times to view the information.

PTY - Program Type, such as News, Sport, Jazz.

RT - Radio Text, the name of the radio station.

CT - Time Control, the time at the location of the radio station.

PS - Program Service name, the name of channel.

You can search the radio stations by program type by pressing **RDS**. The display will show the last PTY in use. Press **PTY** one or more times to select your preferred program type. Press **◀◀ / ▶▶ ▶▶**. The tuner will search automatically. When a station is found the search will stop.

Listening to the cassette tapes

Cassette tapes can be played back in this unit.

	ON UNIT	ON REMOTE
1. Open the tape door	■▲	-
2. Insert the tape	-	-
3. Close the tape door	-	-
4. Select the TAPE function	TAPE	FUNCTION
5. Start the tape playing	▶	-
6. To stop a tape playing	■▲	-

Listening to the cassette tapes - More you can do

Playing Fast backward or Forward

Press **◀◀ / ▶▶** on the unit during playback, or stop, press **▶** (or **■▲**) at a point you want.

Pausing or restart a tape

Press **||** on the player during playback. Press this button again to resume play.

Using an USB device

You can enjoy media files saved on an USB device by connecting the USB device to the USB port of the unit. If you want to operate other function, see the "Listening to CDs" section.

	ON UNIT	ON REMOTE
1. Connect the USB device to the USB port of the unit.	-	-
2. Select the USB function.	USB	FUNCTION
3. Select a file you want to play.	⏮ ⏪ ⏩ ⏭	⏮ ⏪ ⏩ ⏭
4. Start your media playing.	▶	▶/⏸
5. To stop, press	■ STOP	■
6. Before disconnecting the USB device, change to any other function.	(CD,TUNER, ...)	FUNCTION

Compatible USB Devices

- MP3 Player : Flash type MP3 player.
- USB Flash Drive : Devices that support USB 2.0 or USB 1.1.
- The USB function may not be available depending on devices.
- Devices which require additional program installation when you have connected it to a computer, are not supported.

Look out for the follows

- **Do not extract the USB device while in operation.**
- For a large capacity USB, it may take longer than a few minute to be searched.
- To prevent data loss, back up all data.
- If you use a USB extension cable or USB hub, the USB device is not recognized.
- Using NTFS file system is not supported. (Only FAT(16/ 32) file system is supported.)
- This unit is not supported when the total number of files is 1 000 or more.
- External HDD, Locked devices or hard type USB devices are not supported.
- USB port of the unit can not be connected to PC. This unit can not be used as a storage device.

Enjoying a pre-programmed sound field

This system has a number of pre-set surround sound fields. You can select a desired sound mode by using **EQ/ LG EQ**. The displayed items for the Equalizer may be different depending on sound sources and effects.

ON DISPLAY	Description
NATURAL	You can enjoy comfortable and natural sound.
LGEQ	Regionally optimized sound effect. (DANGDUT/ ARABIC/ PERSIAN/ INDIA/ REGUETON/ MERENGUE/ SALSA/ SAMBA)
AUTO EQ	Realizes the sound equalizer that is the most similar to the genre of which is included in song files.
POP CLASSIC JAZZ ROCK	This program lends an enthusiastic atmosphere to the sound, giving you the feeling you are at an actual rock, pop, jazz or classic concert.
MP3 OPT	This function is optimized for compressible MP3 file. It improves the bass sound.
XDSS ON	Reinforce the treble, bass and surround sound effect.
VIRTUAL	You can enjoy more virtual surround sound.
NORMAL	You can enjoy the sound without equalizer effect.

Recording to USB		
You can record a various sound source to USB.		
	ON UNIT	ON REMOTE
1. Connect the USB device to the unit.	-	-
2. Select a mode in which you want to record.	(CD,TUNER, ...)	FUNCTION
3. Play back a sound source first.	▶	▶/
4. Start the recording "REC" is displayed.	R (USB REC.)	● REC
5. To stop recording, press	■ STOP	■

Recording to USB - More you can do

Recording Music file in disc source to USB

One track recording -

If the USB recording is started during playback of the CD, the one track/ file would be recording into the USB.

Program list recording -

USB records after creating your own program if you want to record the track you want. (Audio CD only)

To set recording bit rate and speed

- 1 Press **R (USB REC.)** on the player or **● REC** on the remote control for longer than 3 seconds.
- 2 Use **◀◀ ▶▶** on the player or **◀◀ ▶▶** on the remote control to select the bit rate among 96/128/192/256 Kbps. You can set the quality of the recorded file.
- 3 Press **R (USB REC.)** or **● REC** again to select the recording speed.
- 4 Use **◀◀ ▶▶** or **◀◀ ▶▶** to select a desired recording speed.
 - X 1 SPEED**
 - You can listen to music while recording it. (Audio CD only)
 - X 2 SPEED**
 - You can just recording the music file.

5 Press **R (USB REC.)** or **● REC** to finish the setting.

NOTES:

On radio, AUX or Tape mode, you cannot set the recording speed.

Pausing recording

During recording, press **R (USB REC.)** or **● REC** to pause recording. Press **R (USB REC.)** or **● REC** to continue recording. (Only Radio/ AUX/ TAPE)

When you are recording, look out for the following

- You can check the recording percentage rate for the USB record on the screen during the recording. (MP3/ WMA CD only)
- During recording MP3/ WMA, there is no sound.
- When you stop recording, the file that has been recorded at that time will be stored. (Audio CD only)
- Do not remove the USB device or turn off the unit during USB recording. If not, an incomplete file may be made and not deleted on PC.
- If USB recording does not work, the message like "NO USB", "ERROR", "USB FULL" or "NO MORE" is displayed on the display window.
- A file is recorded by 512Mbyte when you record for a long term.
- When you stop recording during playback, the file will not be stored.
- You may not record more than 999 files.
- **It'll be stored as follows.**

AUDIO CD	MP3/ WMA	The other sources
<pre> CD_REC --- TRK_001 --- TRK_002 </pre>	<pre> FILE_REC --- (File name) --- (File name) </pre>	<pre> EXT_REC --- AUDIO_001 --- AUDIO_002 </pre>

Recording to TAPE

You can record a various sound source to TAPE.

	ON UNIT	ON REMOTE
1. Open the tape deck.	■ ▲	-
2. Insert a blank tape and close the door.	-	-
3. Select a mode in which you want to record.	(CD,TUNER, ...)	FUNCTION
4. Play back a sound source first.	▶	-
5. Press Recording starts.	●▶	-
6. To stop recording, press	■ ▲	-

Setting the Clock

	ON UNIT
1. Turn the power on	⏻/⏻
2. Press for at least 2 seconds	CLOCK
3. Choose from either AM 12:00 (for an am and pm display) or 0:00 (for a 24 hour display).	⏪ ⏩
4. Confirm your selection	SET
5. Select the hours	⏪ ⏩
6. Press	SET
7. Select the minutes	⏪ ⏩
8. Press The clock setting is finished.	SET

Using your player as an alarm clock

- 1 Turn the power on.
- 2 Press and hold **TIMER**. Each function, EX) TUNER, CD... flashes.
- 3 Press **SET** when the function you want to be woken by is showing.
- 4 Choose one of them by pressing **SET**.

5 "ON TIME" will be displayed. Then you can set the time you want the alarm to go on. Press **⏪ ⏩** to change the hours and minutes and **SET** to save.

6 "OFF TIME" will be displayed. Then, you can set the time you want the function to stop. Press **⏪ ⏩** to change the hours and minutes and press **SET** to save.

7 You will be shown the volume (VOL) you want to be woken by. Use **⏪ ⏩** to change the volume and **SET** to save.

The clock icon "⌚" shows that the alarm is set.

8 Press **TIMER** button 2times. You can check the setting status.

Notes:

- If you set the clock time, you can check the time by pressing **CLOCK** even when the player is turned off.
- If you set the clock time and alarm, you can check the alarm icon "⌚" by pressing **CLOCK** even when the player is turned off.

Setting the asleep time

- 1 Press **SLEEP** repeatedly to select delay time between 10 and 180 minutes, after the unit will be turned off.
- 2 To check the remaining time, press **SLEEP**.
- 3 Press **SLEEP** once while "SLEEP 10" is displayed, to deactivate sleep function.

DIMMER

Press **SLEEP** once. The LED (Light-emitting diode) of front panel is turned off and the display window will be darken by half. To cancel it, press **SLEEP** repeatedly until dim off.

Troubleshooting		
Symptom	Cause	Correction
General		
No power.	The power cord is not plugged in.	Plug in the power cord.
	Check whether electricity failed.	Check the condition by operating other electronic devices.
No sound.	Check whether you select right function.	Press FUNCTION and check the selected function.
CD		
The unit does not start playback.	An unplayable disc is inserted.	Insert a playable disc.
	The disc is dirty.	Clean the disc.
RADIO		
Radio stations cannot be tuned in.	The antenna is positioned or connected poorly.	Connect the antenna securely.
TAPE		
Unable to record.	Record protect tabs are removed.	Cover holes on back edge of tape with tap.
Remote control		
The remote control does not work properly.	The remote control is too far from the unit.	Operate the remote control within about 23 ft (7 m).
	There is an obstacle in the path of the remote control and the unit.	Remove the obstacle.
	The battery in the remote control is exhausted.	Replace the battery with new one.



Atención al Cliente

País	Teléfono	País	Teléfono
México	01-800-347-1919	Costa Rica	1-800-507-5454
Colombia	01-8000-910683	Rep. Dominicana	00-800-751-5454
Chile	800-26-1054	Guatemala	1-801-422-5454
Ecuador	1-800-545454	El Salvador	00-800-4399
Venezuela	800-5424477	Cuba	204-3333
Panamá	800-5454	Miami, USA	1-305-477-1882
Perú	0-800-1-2424	Bolivia, La Paz	800-100-545
Puerto Rico	001-800-510-9564	Nicaragua	001-800-507-0007
Argentina	0800-888-5454 (Capital y CABA) / 0610-655-5454 (Interior del país)		


www.lgservice.com

Designs and specifications are subject to change without notice.

Specifications	
General	
Power supply	Refer to main label. (Mexico only : 120 V ~ 60 Hz)
Power consumption	MCD104: 30 W MCD204: 50 W
Net Weight	MCD104: 5 kg MCD204: 5.27 kg
External dimensions (WxHxD)	272 x 338 x 358 mm
Operating temperature	5 °C to 35 °C
Operating humidity	5% to 85 %
Tuner	
FM Tuning Range	87.5 - 108.0MHz or 87.50 - 108.00 MHz
AM Tuning Range (optional)	522 -1620 kHz or 520 -1710 kHz
Amplifier	
Output Power	MCD104: 100W MCD204: 200 W
T.H.D	0.50 %
Frequency Response	45 Hz - 20 KHz
Signal-to-noise ratio	70 dB
CD	
Frequency response	45 Hz - 20 KHz
Signal-to-noise ratio	70 dB
Dynamic range	70 dB
Cassette	
F.F/REW Time	120 sec (C-60)
Frequency Response	250 - 8000 Hz
Signal to Noise Ratio	40 dB
Channel Separation	35 dB (P/B)/ 45 dB (R/P)
Erase Ratio	50 dB (MTT-5511)
Speakers (MCS104F)	
Type	2 Way 2 Speaker
Impedance	4 Ω
Input Power	50 W
Max. Input Power	100 W
Net Dimensions (WxHxD)	220 x 338 x 228 mm
Net Weight (1EA)	2.28kg
Speakers (MCS204F)	
Type	2 Way 2 Speaker
Impedance	4 Ω
Input Power	100 W
Max. Input Power	200 W
Net Dimensions (WxHxD)	220 x 338 x 243 mm
Net Weight (1EA)	3.06 kg
USB	
Version	1.1
BUS power supply	DC 5V ⇄ 500mA