



ENGLISH

PORTUGUES

FRANÇAIS

العربية

OWNER'S MANUAL

# 81 cm TV Matching DVD SOUND BAR

Please read this manual carefully before operating your set and retain it for future reference.

## MODEL

HLT35W (HLT35W, SHT35-D)

P/NO : MFL66306848

1

Safety Information

# 1 Safety Information



**CAUTION:** TO REDUCE THE RISK OF ELECTRIC SHOCK DO NOT REMOVE COVER (OR BACK) NO USER-SERVICEABLE PARTS INSIDE REFER SERVICING TO QUALIFIED SERVICE PERSONNEL.



This lightning flash with arrowhead symbol within an equilateral triangle is intended to alert the user to the presence of uninsulated dangerous voltage within the product's enclosure that may be of sufficient magnitude to constitute a risk of electric shock to persons.



The exclamation point within an equilateral triangle is intended to alert the user to the presence of important operating and maintenance (servicing) instructions in the literature accompanying the product.

**WARNING:** TO PREVENT FIRE OR ELECTRIC SHOCK HAZARD, DO NOT EXPOSE THIS PRODUCT TO RAIN OR MOISTURE.

**WARNING:** Do not install this equipment in a confined space such as a book case or similar unit.



**CAUTION:** This product employs a Laser System. To ensure proper use of this product, please read this owner's manual carefully and retain it for future reference. Shall the unit require maintenance, contact an authorized service center.

Use of controls, adjustments or the performance of procedures other than those specified herein may result in hazardous radiation exposure.

To prevent direct exposure to laser beam, do not try to open the enclosure. Visible laser radiation when open. DO NOT STARE INTO BEAM.

**CAUTION:** The apparatus shall not be exposed to water (dripping or splashing) and no objects filled with liquids, such as vases, shall be placed on the apparatus.

**CAUTION concerning the Power Cord**

Most appliances recommend they be placed upon a dedicated circuit;

That is, a single outlet circuit which powers only that appliance and has no additional outlets or branch circuits. Check the specification page of this owner's manual to be certain. Do not overload wall outlets. Overloaded wall outlets, loose or damaged wall outlets, extension cords, frayed power cords, or damaged or cracked wire insulation are dangerous. Any of these conditions could result in electric shock or fire. Periodically examine the cord of your appliance, and if its appearance indicates damage or deterioration, unplug it, discontinue use of the appliance, and have the cord replaced with an exact replacement part by an authorized service center. Protect the power cord from physical or mechanical abuse, such as being twisted, kinked, pinched, closed in a door, or walked upon. Pay particular attention to plugs, wall outlets, and the point where the cord exits the appliance. To disconnect power from the mains, pull out the mains cord plug. When installing the product, ensure that the plug is easily accessible.

**WARNING:** Do not install this equipment in a confined space such as a book case or similar unit.

**CAUTION:** Do not block any ventilation openings. Install in accordance with the manufacturer's instructions.

Slots and openings in the cabinet are provided for ventilation and to ensure reliable operation of the product and to protect it from overheating. The openings should be never be blocked by placing the product on a bed, sofa, rug or other similar surface. This product should not be placed in a built-in installation such as a bookcase or rack unless proper ventilation is provided or the manufacturer's instruction have been adhered to.

This device is equipped with a portable battery or accumulator.

#### **Safe way to remove the battery or the battery from the equipment:**

Remove the old battery pack, follow the steps in reverse order than the assembly. To prevent contamination of the environment and bring on possible threat to human and animal health, the old battery or the battery put in the appropriate container at designated collection points. Do not dispose of batteries or battery together with other waste. It is recommended that you use local, free reimbursement system batteries and accumulators.

The battery shall not be exposed to excessive heat such as sunshine, fire or the like.

### **Copyrights**

It is forbidden by law to copy, broadcast, show, broadcast via cable, play in public, or rent copyrighted material without permission. This product features the copy protection function developed by Macrovision. Copy protection signals are recorded on some discs. When recording and playing the pictures of these discs picture noise will appear. This product incorporates copyright protection technology that is protected by U.S. patents and other intellectual property rights. Use of this copyright protection technology must be authorized by Macrovision, and is intended for home and other limited viewing uses only unless otherwise authorized by Macrovision. Reverse engineering or disassembly is prohibited.

CONSUMERS SHOULD NOTE THAT NOT ALL HIGH DEFINITION TELEVISION SETS ARE FULLY COMPATIBLE WITH THIS PRODUCT AND MAY CAUSE ARTIFACTS TO BE DISPLAYED IN THE PICTURE. IN CASE OF 525 OR 625 PROGRESSIVE SCAN PICTURE PROBLEMS, IT IS RECOMMENDED THAT THE USER SWITCH THE CONNECTION TO THE 'STANDARD DEFINITION' OUTPUT. IF THERE ARE QUESTIONS REGARDING OUR TV SET COMPATIBILITY WITH THIS MODEL 525p AND 625p UNIT, PLEASE CONTACT OUR CUSTOMER SERVICE CENTER.

You have to set the disc format option to [Mastered] in order to make the discs compatible with the LG players when formatting rewritable discs. When setting the option to Live File System, you cannot use it on LG players.

(Mastered/ Live File System : Disc format system for Windows Vista)

# Contents

1

## Safety Information

2

### 2 CAUTION

3

## Preparation

4

### 6 Unique Features

### 6 Accessories

### 7 Introduction

#### 7 Playable Discs

#### 7 About the Symbol Display

#### 7 Symbol Used in this Manual

#### 7 Regional Codes

5

### 8 Playable file Requirement

### 9 Remote control

### 11 Front panel

### 12 Rear panel

6

## Installation

7

### 13 Mounting the main unit on a wall

### 15 Setting up

### 17 Connections to Your TV

#### 17 HDMI Out Connection

#### 18 Video Connection

#### 19 Resolution Setting

### 19 Video Output Resolution

### 20 Optional Equipment Connection

### 20 AUX In Connection

### 20 AUDIO (PORT. IN) In Connection

### 20 Listening to music from your portable player or external device

### 21 USB Connection

### 22 OPTICAL In connection

### 22 Antenna Connection

### 23 Adjust the setup settings

#### 23 OSD Initial language settings

#### 23 To display and exit the Setup menu

#### 24 Language

#### 24 Display

#### 25 Audio

#### 26 Lock (Parental Control)

#### 27 Others

## Operation

### 28 Using the Home Menu

### 28 Basic Operations

### 29 Other Operations

#### 29 Displaying Disc Information on-screen

#### 30 To display the DVD Menu

#### 30 To display the DVD title

#### 30 1.5 times speed playback

#### 30 Screen Saver

#### 30 Starting play from selected time

#### 30 Resume playback

#### 31 Marked Playback

- 31 Changing subtitle code page
- 32 Viewing a PHOTO file
- 32 Options while viewing a photo
- 33 Sleep Timer Setting
- 33 Turn off the sound temporarily
- 33 Last Scene Memory
- 33 System Select - Optional
- 33 Adjust the speaker level settings
- 33 VOCAL FADER
- 34 Radio Operations**
  - 34 Listening to the radio
  - 34 Presetting the Radio Stations
  - 34 Deleting all the saved stations
  - 34 Deleting a saved station
  - 34 Improving poor FM reception
- 35 Sound adjustment**
  - 35 Setting the surround mode
- 36 Advanced Operations**
  - 36 Recording to USB

**Maintenance**

---

- 37 Notes on Discs
- 37 Handling the Unit

**Troubleshooting**

---

- 38 Troubleshooting

**Appendix**

---

- 39 Language Codes
- 40 Area Codes
- 41 Trademarks and Licenses
- 42 Specifications



# 2 Preparation

2

Preparation

## Unique Features

### Portable In

Listens to music from your portable device.  
(MP3, Notebook, etc)

### USB Direct Recording

Records music from CD to your USB device.

### Full HD up-scaling

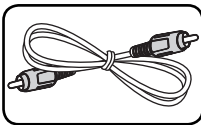
Views Full HD picture quality with simple setup.

### Home Theater Speaker ez Setup

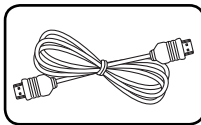
Listens to sound from TV, DVD and Digital device with vivid 2.1 or 2.0 ch mode.

## Accessories

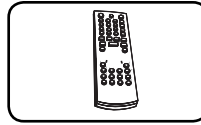
Please check and identify the supplied accessories.



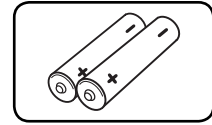
Video cable (1)



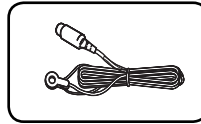
HDMI cable (1)



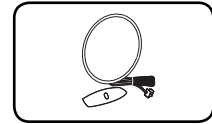
Remote control (1)



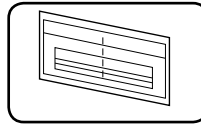
Batteries (2)



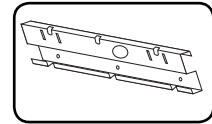
FM antenna (1)



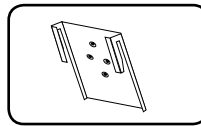
AM antenna (1)



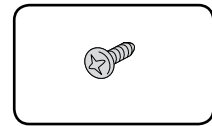
WALL BRACKET  
INSTALL GUIDE (1)



Wall bracket (1)



Unit brackets (2)



Screw (4)

# Introduction

## Playable Discs

This unit plays DVD±R/RW and CD-R/RW that contains audio titles, DivX, MP3, WMA and/or JPEG files. Some DVD±RW/DVD±R or CD-RW/CD-R cannot be played on this unit due to the recording quality or physical condition of the disc, or the characteristics of the recording device and authoring software.



DVD-VIDEO (8 cm / 12 cm disc)  
Discs such as movies that can be purchased or rented.



DVD±R (8 cm / 12 cm disc)  
Video mode and finalized only



DVD-RW (8 cm / 12 cm disc)  
Video mode and finalized only



DVD+R: Video mode only  
Supports the double layer disc also



DVD+RW (8 cm / 12 cm disc)  
Video mode and finalized only



Audio CD: Music CDs or CD-R/CD-RW in music CD format that can be purchased.

## Symbol Used in this Manual

All discs and file listed below	<b>ALL</b>
MP3 files	<b>MP3</b>
DVD and finalized DVD±R/RW	<b>DVD</b>
WMA files	<b>WMA</b>
DivX files	<b>DivX</b>
Audio CDs	<b>ACD</b>
JPG files	<b>JPG</b>



### NOTE

Indicates special notes and operating features.



### TIP

Indicates tip and hints for making the task easier.



### CAUTION

Indicates cautions for preventing possible damages from abuse.

## Regional Codes

This unit has a regional code printed on the rear of the unit. This unit can play only DVD discs labeled same as the rear of the unit or "ALL".

- Most DVD discs have a globe with one or more numbers in it clearly visible on the cover. This number must match your unit's regional code or the disc cannot play.
- If you try to play a DVD with a different regional code from your unit, the message "Check Regional Code" appears on the TV screen.

## Playable file Requirement

### MP3/ WMA music file requirement

MP3/ WMA file compatibility with this unit is limited as follows :

- Sampling frequency : within 32 to 48 kHz (MP3), within 32 to 48 kHz (WMA)
- Bit rate : within 32 to 320 kbps (MP3), 40 to 192 kbps (WMA)
- Support Version : v2, v7, v8, v9
- Maximum files : Under 999
- File extensions : ".mp3"/ ".wma"
- CD-ROM file format : ISO9660/ JOLIET
- We recommend that you use Easy-CD Creator, which creates an ISO 9660 file system.

### Photo file requirement

Photo file compatibility with this unit is limited as follows :

- Max pixel in width : 2760 x 2048 pixel
- Maximum files : Under 999
- Some discs may not operate due to a different recording format or the condition of disc.
- File extensions: ".jpg"
- CD-ROM file format : ISO9660/ JOLIET

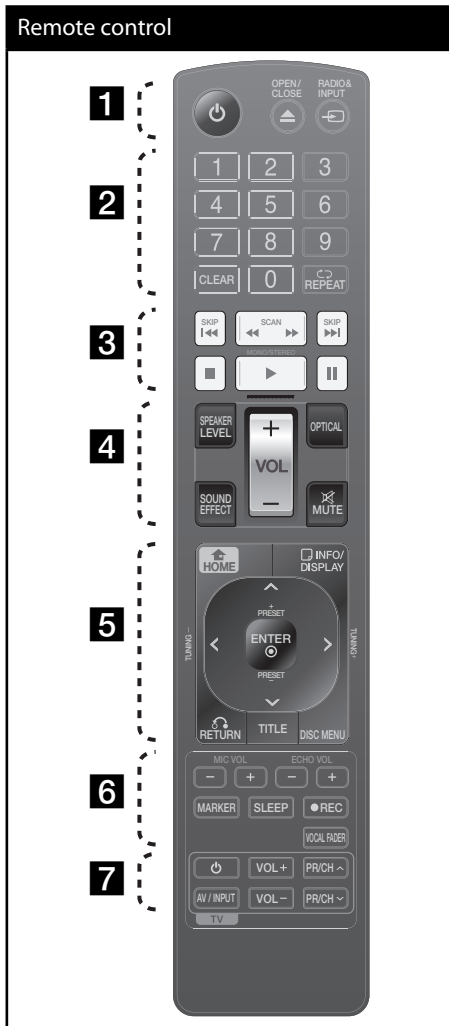
### DivX file requirement

DivX file compatibility with this unit is limited as follows :

- Available resolution: within 720x576 (W x H) pixels.
- The file name of the DivX subtitle should be entered within 45 characters.
- If there is impossible code to express in the DivX file, it may be displayed as "\_ " mark on the display.
- Frame rate : less than 30 fps.
- If the video and audio structure of recorded files is not interleaved, either video or audio is outputted.
- Playable DivX file : ".avi", ".mpg", ".mpeg", ".divx"
- Playable Subtitle format : SubRip (\*.srt/ \*.txt), SAMI (\*.smi), SubStation Alpha (\*.ssa/ \*.txt), MicroDVD (\*.sub/ \*.txt), SubViewer 2.0 (\*.sub/ \*.txt), Vobsub (\*.sub)
- Playable Codec format : "DIVX3.xx", "DIVX4.xx", "DIVX5.xx", "MP4V3", "3IVX".
- Playable Audio format : "AC3", "PCM", "MP3", "WMA".
- Sampling frequency : within 32 to 48 kHz (MP3), within 32 to 48 kHz (WMA)
- Bit rate : within 32 to 320 kbps (MP3), 40 to 192 kbps (WMA)
- For Discs formatted in Live file system, you can not it on this unit.
- If the name of movie file is different from that of the subtitle file, during playback of a DivX file, subtitle may not be display.
- If you play a DivX file different from DivXspec, it may not operate normally.



## Remote control



..... **1** .....

**⏻ (POWER)** : Switches the unit ON or OFF.

**⏮ OPEN/CLOSE** : Opens and closes the disc Drawer.

**↔ RADIO&INPUT** : Changes input sources.

..... **2** .....

**0 to 9 numerical buttons** : Selects numbered options in a menu.

**CLEAR** : Removes a number when setting the password.

**↺ REPEAT** : Selects a play mode. (Repeat/ Repeat all/ Random)

..... **3** .....

**⏮/⏭ SKIP** : Goes to next or previous chapter/ track/ file.

**⏮/⏭ SCAN** : Searches backward or forward.

**■ (STOP)** : Stops playback or recording.

**▶ (PLAY), MONO/STEREO** : Starts playback. Selects Mono/ Stereo.

**⏸ (PAUSE/STEP)** : Pauses playback.

..... **4** .....

**SPEAKER LEVEL** : Sets the sound level of desired speaker.

**SOUND EFFECT** : Selects a sound effect mode.

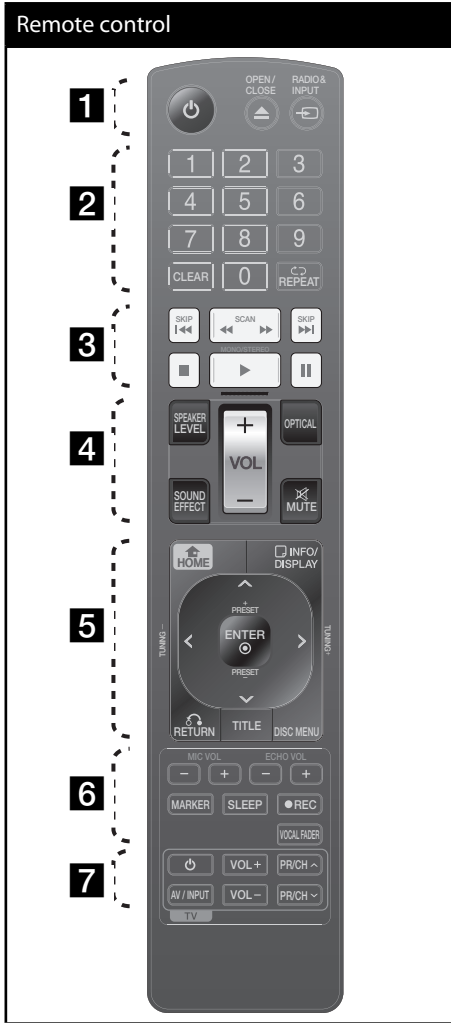
**VOL +/- (Volume)** : Adjusts speaker volume.

**OPTICAL** : Changes input source to optical directly.

**🔇 MUTE** : Mutes the sound.

### Put the batteries into the remote control

Make sure for the + (plus) and – (minus) on the batteries to be matched on the remote control.



- **HOME**: Displays the [Home] menu.
- ☐ **INFO/DISPLAY** : Accesses On-Screen Display.
- ▲/▼/◀/▶ (up/ down/ left/ right): Used to navigate on-screen displays.
- PRESET (+/-)** : Selects programme of Radio.

**TUNING -/+** : Tunes in the desired radio station.

⊙ **ENTER** : Acknowledges menu selection. Presetting the radio stations.

↶ **RETURN** : Moves backwards in the menu or exits the setup menu.

**TITLE** : If the current DVD title has a menu, the title menu appears on the screen. Otherwise, the disc menu may not appear.

**DISC MENU** : Accesses the menu on a DVD disc.



**ECHO VOL. -/+** : Adjusts echo volume.

**MIC VOL. -/+** : Adjusts microphone volume.

**MARKER** : Marks play list.

**SLEEP** : Sets the System to turn off automatically at a specified time.

● **REC** : USB Direct Recording.

**VOCAL FADER** : You can enjoy the function as karaoke, by reducing singer vocal of music in the various source.

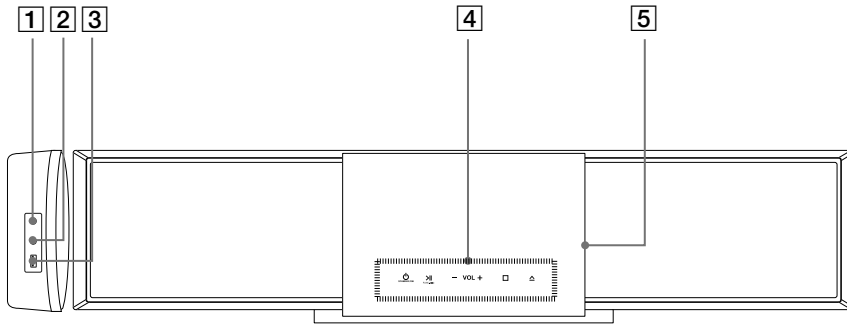


**TV Control buttons** : Controls the TV. (LG TV only)

**Controlling the TV**

You can control the sound level, input source, and power switching of LG TVs as well. Hold POWER (TV) and press PR/CH (▲/▼) button repeatedly until the TV turns on or off.

## Front panel



**1** Microphone

**2** PORT. IN

**3** USB Port

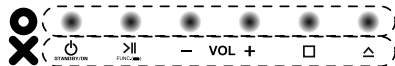
**4** Touch buttons

- STANDBY/ON
- (PLAY / PAUSE)  
FUNC.

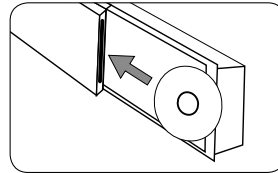
Press and hold down this button for about 3 seconds, then press repeatedly to select other function.

- (STOP)
- **-VOL +**  
Adjusts speaker volume.
- Ejects or inserts disc.

Touch the blue or red LED button to operate the unit.



**5** Disc slot



### CAUTION

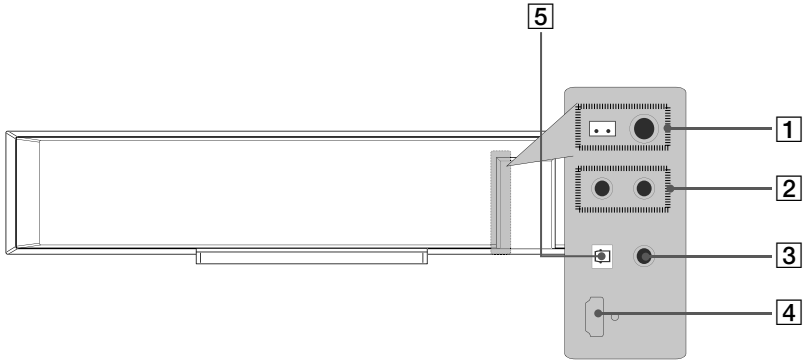
Precautions in using the touch buttons

- Do not press the touch buttons hard to make it work.  
-If you apply too much strength, it can damage the sensor of the touch buttons.
- Touch the button that you want to work in order to operate the function correctly.
- Be careful not to have any conductive material such as metallic object on the touch buttons. It can cause malfunctions.
- Be careful not to have any conductive material such as metallic object on the touch buttons. It can cause malfunctions.

## Rear panel

2

Preparation



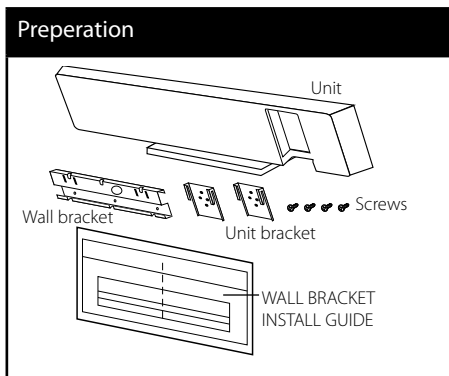
- 1 Antenna Connector
- 2 AUX IN (L/R)
- 3 VIDEO OUT

- 4 HDMI OUT
- 5 OPTICAL IN

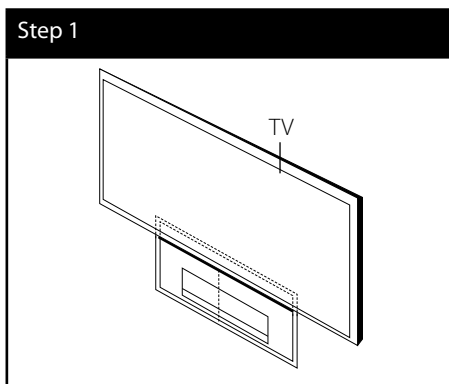
# 3 Installation

## Mounting the main unit on a wall

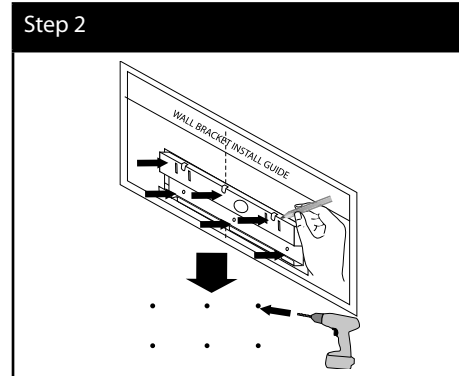
You can mount the main unit on a wall. Prepare screws and brackets supplied.



1. Match the TV BOTTOM LINE of WALL BRACKET INSTALL GUIDE with the bottom of TV and attach to the position.



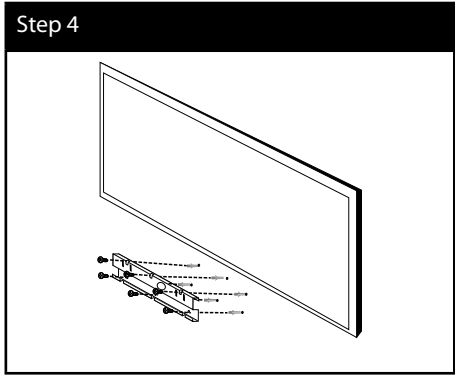
2. When you mount it on a wall (concrete), use the wall plugs (Not supplied). You should drill some holes. A guide sheet (WALL BRACKET INSTALL GUIDE) is supplied to drill. Use the sheet to check the point to drill.



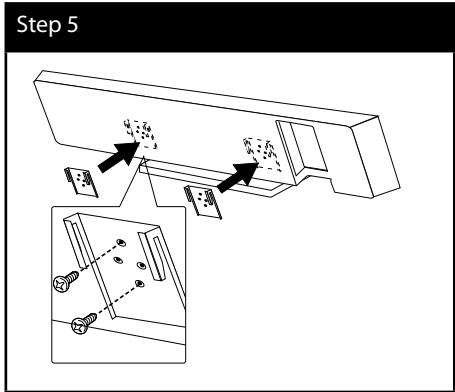
### ! NOTE

Screws and Wall Plugs are not supplied for mounting the unit. We recommend the Hilti (HUD-1 6 x 30) for the mounting. Please purchase it.

3. Remove the WALL BRACKET INSTALL GUIDE.
4. Fix it with screws (not supplied) as shown in the illustration below.

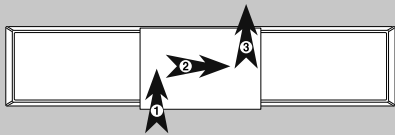


5. Attach the unit bracket to the unit with screws (supplied) as shown in the illustration below.

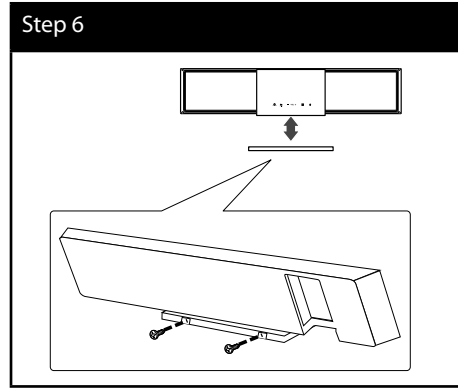


**NOTE**

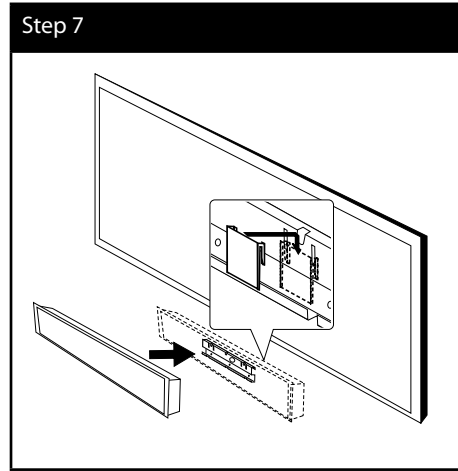
Detach the unit from the bracket as shown below.



6. Remove the stand from the unit.



7. Hang the main unit onto the brackets, as shown below.



**CAUTION**

- Do not hang onto the installed unit and avoid any impact to the unit.
- Secure the unit firmly to the wall so that it does not fall off. If the unit falls off, it may result in an injury or damage to the product.
- When the unit is installed on a wall, please make sure that a child does not pull any of connecting cables, as it may cause it to fall.

# Setting up

## Wireless connection

### LED indicator of wireless subwoofer

LED Color	Operation
Blue	The wireless subwoofer is receiving the signal of the unit.
Blue (blink)	The wireless subwoofer is trying to connect.
Red	The Wireless subwoofer is in standby mode.
Off (No display)	The Wireless subwoofer is turned off.

### Initial setting of an ID for the wireless subwoofer

1. Connect the power cord of the Wireless subwoofer to the outlet.
2. Turn on the main unit : The main unit and wireless subwoofer will be automatically connected.

### Setting an ID for the wireless subwoofer

When the unit is manufactured, the ID is already set. If interference occurs or you use a new wireless subwoofer, an ID should be set again.

1. Press HOME (🏠).
2. Use </> to select the [Setup] and press ENTER (⊙). The [Setup] menu appears.
3. Use ▲/▼ to select [AUDIO] option then press > to move to the second level.
4. Use ▲/▼ to select the [Connecting Speakers] option then press ENTER (⊙) to move to the third level. The [Wireless Speaker Connection Guide] appears.
5. Press PAIRING button on the subwoofer. - If you see the blue LED indicator light, pairing was successful.
6. Use ▲/▼ to select the [2.1 Speaker Setup] and press ENTER (⊙) for wireless speaker connection test.



**NOTE**

- If you operate main unit then wireless subwoofer (rear speakers) sound within a few seconds in standby mode.
- Set the distance between this unit and subwoofer Receiver within 10 m (32 ft.).
- Optimum performance can be implemented only when the unit and the Wireless subwoofer within distance of 2 m (6 ft.) to 10 m (32 ft.) is used since communication failure may occur if longer distance is used.
- It takes a few seconds (and may take longer) for the Wireless Transmitter and subwoofer to communicate with each other.

3

Installation



## Connections to Your TV

Make one of the following connections, depending on the capabilities of your existing equipment.

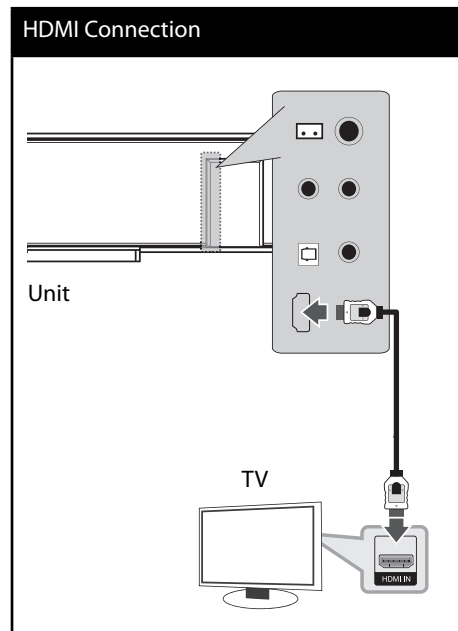
### NOTE

- Depending on your TV and other equipment you wish to connect, there are various ways you could connect the unit. Use only one of the connections described in this manual.
- Please refer to the manuals of your TV, Stereo System or other devices as necessary to make the best connections.
- Make sure the unit is connected directly to the TV. Tune the TV to the correct video input channel.
- Do not connect your unit via your VCR. The image could be distorted by the copy protection system.

## HDMI Out Connection

If you have a HDMI TV or monitor, you can connect it to this unit using a HDMI cable. Connect the HDMI OUT jack on the unit to the HDMI IN jack on a HDMI compatible TV or monitor.

Set the TV's source to HDMI (refer to TV's Owner's manual).



### TIP

- You can fully enjoy digital audio and video signals together with this HDMI connection.
- When you use HDMI connection, you can change the resolution for the HDMI output. (Refer to "Resolution Setting" on page 19.)

## NOTE

- If a connected HDMI device does not accept the audio output of the unit, the HDMI device's audio sound may be distorted or may not output.
- When you connect a HDMI or DVI compatible device make sure of the following:
  - Try switching off the HDMI/DVI device and this unit. Next, switch on the HDMI/DVI device and leave it for around 30 seconds, then switch on this unit.
  - The connected device's video input is set correctly for this unit.
  - The connected device is compatible with 720x576i (or 480i), 720x576p (or 480p), 1280x720p, 1920x1080i or 1920x1080p video input.
- Not all HDCP-compatible HDMI or DVI devices will work with this unit.
  - The picture will not be displayed properly with non-HDCP device.
  - This unit does not playback and TV screen is changed to black or green screen or the snow noise may occur on the screen.
- If there is noise or lines on the screen, please check the HDMI cable and use a higher version cable than 1.2A HDMI cable.

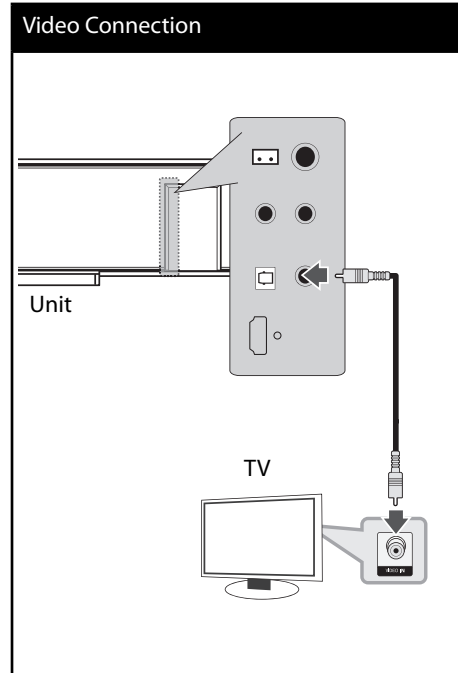
## CAUTION

- Changing the resolution when the connection has already been established may result in malfunctions. To solve the problem, turn off the unit and then turn it on again.
- When the HDMI connection with HDCP is not verified, TV screen is changed to black or green screen or the snow noise may occur on the screen. In this case, check the the HDMI connection, or disconnect the HDMI cable.

## Video Connection

Connect the VIDEO OUT jack on the unit to the video in jack on the TV using a video cable.

You can hear the sound through the system's speakers.



## Resolution Setting

The player provides several output resolutions for HDMI OUT jacks. You can change the resolution using [Setup] menu.

1. Press **HOME**.
2. Use **</>** to select the [Setup] and press **ENTER**. The [Setup] menu appears.



3. Use **^/V** to select [Display] option then press **>** to move to the second level.
4. Use **^/V** to select the [Resolution] option then press **>** to move to the third level.
5. Use **^/V** to select the desired resolution then press **ENTER** to confirm your selection.

### NOTE

If your TV does not accept the resolution you have set on the player, you can set resolution to 576p (or 480p) as follows:

Press **■ (STOP)** for more than 5 seconds.

## Video Output Resolution

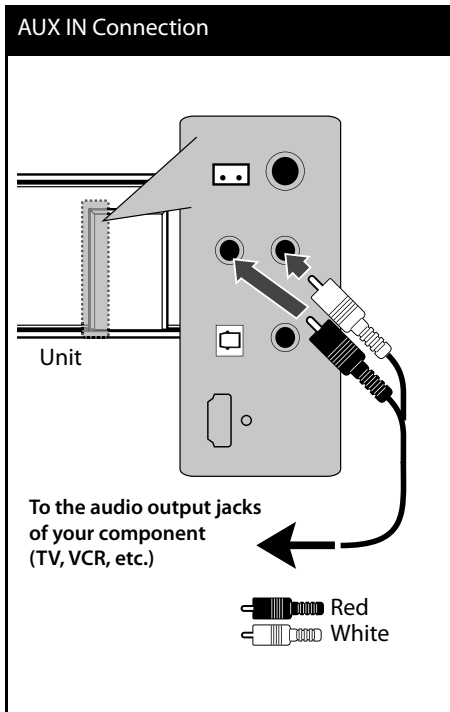
[HDMI OUT]: 1080p, 1080i, 720p and 576p (or 480p) and 576i (or 480i)

[VIDEO OUT]: 576i (or 480i)

## Optional Equipment Connection

### AUX In Connection

Connect an Output of auxiliary device to the AUX (L/R) INPUT Connector.

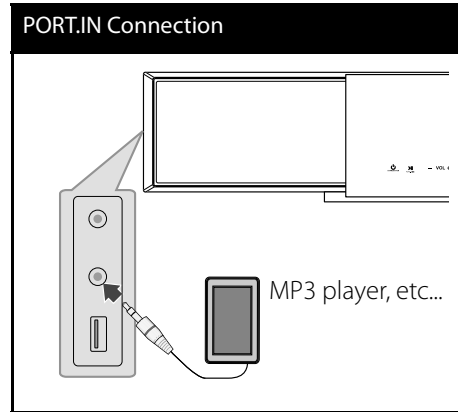


#### NOTE

If your TV has only one output for audio (mono), connect it to the left (white) audio jack on the unit.

### AUDIO (PORT. IN) In Connection

Connect an output of portable device (MP3 or PMP etc) to the AUDIO (PORT. IN) input connector.



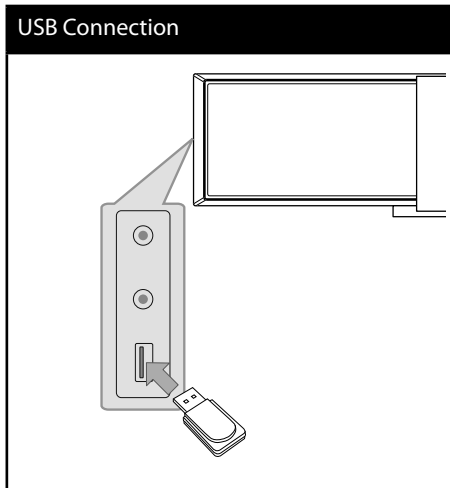
### Listening to music from your portable player or external device

The unit can be used to play the music from many types of portable player or external devices.

1. Connect the portable player to the PORT.IN(PORTABLE IN) connector of the unit.
- Or  
Connect the external device to the AUX connector of the unit.
2. Turn the power on by pressing **POWER**.
3. Select the PORTABLE or AUX (L/R) INPUT function by pressing **RADIO&INPUT**.
4. Turn on the portable player or external device and start playing it.

## USB Connection

Connect the USB port of USB Memory (or MP3 player, etc.) to the USB port on the front of the unit.



Removing the USB Device from the unit

1. Choose a different function mode or press **STOP** (■) twice in a row.
2. Remove the USB device from the unit.

## Compatible USB Devices

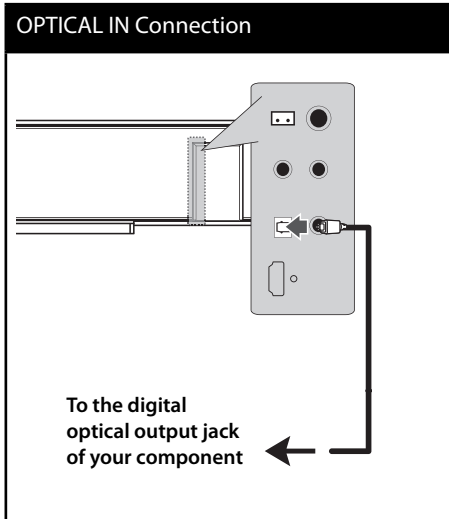
- MP3 Player : Flash type MP3 player.
- USB Flash Drive : Devices that support USB2.0 or USB1.1.
- The USB function of this unit does not support some USB devices.

## USB device requirement

- Devices which require additional program installation connected to a computer, are not supported.
- Do not extract the USB device while in operation.
- For a large capacity USB, it may take longer than a few minutes to be searched.
- To prevent data loss, back up all data.
- If you use a USB extension cable or USB hub, the USB device is not recognized.
- Using NTFS file system is not supported. (Only FAT(16/32) file system is supported.)
- This unit is not supported when the total number of files is 1 000 or more.
- External HDD, Card readers, Locked devices, or hard type USB devices are not supported.
- The unit's USB Port cannot be connected to PC. The unit can not be used as a storage device.

## OPTICAL In connection

Connect an optical output of Unit (or Digital Device etc) to the OPTICAL IN connector.



3  
Installation

## Home theater speaker ez setup

Listen to sound from TV, DVD and Digital Device with 2.1 or 2ch mode. Even in power off mode, if you press **OPTICAL**, then power is on and automatically changed to AUX OPT mode.

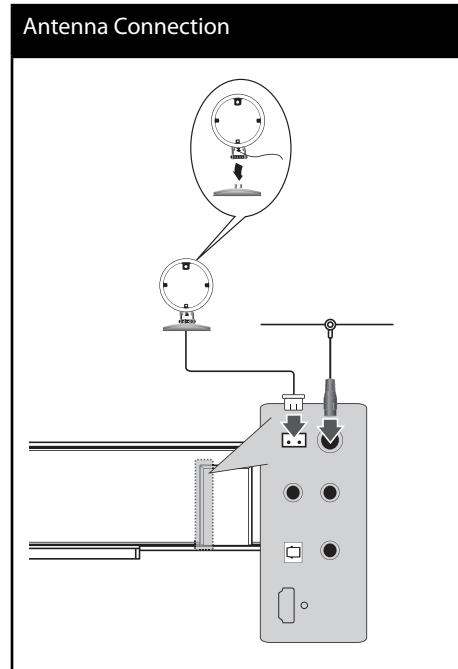
1. Connect the unit's OPTICAL IN jack to jack on optical out of your TV (or Digital Device etc.).
2. Select the AUX OPT by using the **OPTICAL**. To select the AUX OPT directly
3. Listen to sound with 2.1 or 2ch speaker.
4. To escape from AUX OPT by using the **OPTICAL**. Function is returned to previous one.

## Antenna Connection

Connect the supplied FM/AM antenna for listening to the radio.

Connect the AM Loop antenna to the AM antenna connector.

Connect the FM Wire antenna to the FM antenna connector.



### NOTE

- To prevent noise pickup, keep the AM Loop antenna away from the unit and other components.
- Be sure to fully extend the FM wire antenna. After connecting the FM wire antenna, keep it as horizontal as possible.

## Adjust the setup settings

By using the Setup menu, you can make various adjustments to items such as picture and sound.

You can also set a language for the subtitles and the Setup menu, among other things. For details on each Setup menu item, see pages 23 to 27.

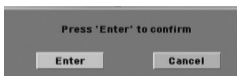
### OSD Initial language settings

During the first use of this unit, the initial language setup menu appears on your TV screen. You must complete initial language selection before using the unit. English will be selected as the initial language.

1. Press **POWER** to turn the unit on. The language setup menu will appear on the screen.



2. Use **^ v < >** to select a language then press **ENTER**. The confirm menu will appear.



3. Use **< >** to select the [Enter] then press **ENTER** to finish the language setup.

### To display and exit the Setup menu

1. Press **HOME**. Displays the [Home Menu].



2. Select a [Setup] by using **< >**.
3. Press **ENTER**. Displays the [Setup]
4. Press **HOME** or **RETURN** to exit in the [Setup] Menu.

#### About help menu for Setup

Menu	Buttons	Operation
<b>▲▼</b> Move	<b>^ v</b>	Moving to another menu.
<b>◀</b> Move	<b>&lt;</b>	Moving to previous level.
<b>▶</b> Move	<b>&gt;</b>	Moving to next level or selecting menu.
<b>↶</b> Close	<b>↶</b> RETURN	To exit the [Setup] menu or [ 2.1 Speaker Setup].
<b>⊙</b> Select	<b>⊙</b> ENTER	To confirm menu.

## Language

### Menu Language

Select a language for the Setup menu and then on screen display.

### Disc Audio / Disc Subtitle / Disc Menu

Select the language you prefer for the audio track (disc audio), subtitles, and the disc menu.

#### [Original]

Refers to the original language in which the disc was recorded.

#### [Other]

To select another language, press numeric buttons and then **ENTER** to enter the corresponding 4-digit number according to the language code list on the page 39. If you enter the wrong language code, press **CLEAR**.

#### [Off (for Disc Subtitle)]

Turn off Subtitle.

## Display

### TV Aspect

Select which screen aspect to use based on the shape of your TV screen.

#### [4:3]

Select when a standard 4:3 TV is connected.

#### [16:9]

Select when a 16:9 wide TV is connected.

### Display Mode

The Display Mode setting works only when the TV Aspect mode is set to 4:3.

#### [Letterbox]

Displays a wide picture with bands on the upper and lower portions of the screen.

#### [Panscan]

Automatically displays the wide picture on the entire screen and cuts off the portions that do not fit. (If the disc/file is not compatible with Pan Scan, the picture is displayed at Letterbox ratio.)

### Resolution

Sets the output resolution of the HDMI video signal. Refer to page 19 for details about the resolution setting.

#### [Auto]

If the HDMI OUT jack is connected to TVs providing display information (EDID), automatically selects the resolution best suited to the connected TV.

#### [1080p]

Outputs 1080 lines of progressive video.

#### [1080i]

Outputs 1080 lines of interlaced video.

#### [720p]

Outputs 720 lines of progressive video.

#### [576p (or 480p)]

Outputs 576 (or 480) lines of progressive video.

#### [576i (or 480i)]

Outputs 576 (or 480) lines of interlaced video.

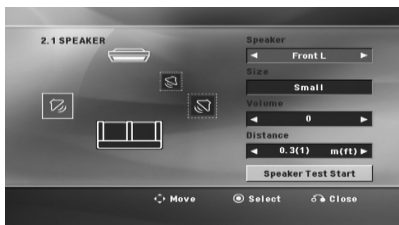


## Audio

### 2.1 Speaker Setup

Make the following settings for the built-in 2.1 channel surround decoder.

1. Select [2.1 Speaker Setup] on the [Audio] menu.
2. Press **ENTER**.  
The [2.1 SPEAKER] appears.



3. Use < > to select the desired speaker.
4. Adjust options using  $\wedge \vee < >$  buttons.
5. Returns to the previous menu by pressing **RETURN**.

#### [Speaker selection]

Select a speaker that you want to adjust.



#### NOTE

Certain speaker settings are prohibited by the Dolby Digital licensing agreement.

#### [Size]

Since the speaker settings are fixed, you cannot change the settings.

#### [Volume]

Press < > to adjust the output level of the selected speaker.

Front L/R : 0 ~ -5

SubWoofers : 5 ~ -5

#### [Test]

Select [Speaker Test Start] by using the  $\wedge \vee$  and press **ENTER**. Press **ENTER** again to stop. Adjust the volume to match the volume of test signals memorized in the system.

### DRC (Dynamic Range Control)

Make the sound clear when the volume is turned down (Dolby Digital only). Set to [On] for this effect.

### Vocal

Select [On] to mix karaoke channels into normal stereo.

This function is effective for multi-channel karaoke DVDs only.

## HD AV Sync

Sometimes Digital TV encounters a delay between picture and sound. If this happens you can compensate by setting a delay on the sound so that it effectively 'waits' for the picture to arrive: this is called HD AV Sync. Use **▲ ▼** (on the remote control) to scroll up and down through the delay amount, which you can set at anything between 0 and 300m sec.

## Semi Karaoke

When a chapter/ title/ track is fully finished, this function shows the score in the screen with a fanfare sound.

### [On]

When you finished singing a score will appear on the screen.

### [Off]

Fanfare and score do not appear on the screen.



## NOTE

- DVD, DVD Karaoke discs with more than 2 tracks are available discs for this function.
- When you watch movies, "off" the Semi Karaoke at the SETUP menu or enjoy it without connecting the MIC if the fanfare or score appears during changing a chapter.
- This function operate on the DVD/CD mode.
- The Semi Karaoke function is available only when a microphone is connected.

## Connecting speakers

You can set up wireless connection manually, when your connection is not completed. Refer to page 15.

## Lock (Parental Control)

### Initial Setting the Area Code:

When you use this unit for the first time, you have to set the Area Code.

1. Select the [Lock] menu and then press **>**.
2. Press **>**.  
To access the [Lock] options, you must input the password you have created. Input a password and press **⊙ ENTER**. Enter it again and press **⊙ ENTER** to verify. If you make a mistake before pressing **⊙ ENTER**, press **CLEAR**.
3. Select the first character using **▲ ▼** buttons.
4. Press **⊙ ENTER** and select the second character using **▲ ▼** buttons.
5. Press **⊙ ENTER** to confirm your Area code selection.

### Rating

Blocks playback of rated DVDs based on their contents. Not all discs are rated.

1. Select [Rating] on the [Lock] menu then press **>**.
2. Input a password and press **⊙ ENTER**.
3. Select a rating from 1 to 8 using the **▲ ▼** buttons.

### [Rating 1-8]

Rating one (1) has the most restrictions and rating eight (8) is the least restrictive.

### [Unlock]

If you select unlock, parental control is not active and the disc plays in full.

4. Press **⊙ ENTER** to confirm your rating selection.

## Password

You can enter or change password.

1. Select [Password] on the [Lock] menu and then press >.
2. Press **ENTER**.
3. Input a password and press **ENTER**.

To change the password, press **ENTER** when the [Change] option is highlighted. Input a password and press **ENTER**. Enter it again and press **ENTER** to verify.

4. Press **HOME** to exit the menu.



### NOTE

If you forget your password, you can clear it using the following steps:

1. Select the [Setup] menu on the [Home] menu.
2. Input the 6-digit number "210499" and press **ENTER**. The password is cleared.

## Area Code

Enter the code of the area whose standards were used to rate the DVD video disc, based on the list on page 40.

1. Select [Area Code] on the [Lock] menu then press >.
2. Input a password and press **ENTER**.
3. Select the first character using **▲ ▼** buttons.
4. Press **ENTER** and select the second character using **▲ ▼** buttons.
5. Press **ENTER** to confirm your Area code selection.

## Others

### DivX VOD

**ABOUT DIVX VIDEO:** DivX® is a digital video format created by DivX, Inc. This is an official DivX Certified device that plays DivX video. Visit [www.divx.com](http://www.divx.com) for more information and software tools to convert your files into DivX video.

**ABOUT DIVX VIDEO-ON-DEMAND:** This DivX Certified® device must be registered in order to play DivX Video-on-Demand (VOD) content. To generate the registration code, locate the DivX VOD section in the device setup menu. Go to [vod.divx.com](http://vod.divx.com) with this code to complete the registration process and learn more about DivX VOD.

---

#### [Register]

Displays the registration code of your player.

---

#### [Deregister]

Deactivate your player and display the deactivation code.



### NOTE

All the downloaded videos from DivX VOD with this player's registration code can only be played back on this unit.

# 4 Operation

## Using the Home Menu Basic Operations

1. Press **HOME**.  
Displays the [Home Menu].



2. Select an option by using **< >**.
3. Press **ENTER** then selected option menu.

[Music] – Displays [MUSIC] menu.

[Movie] – Start video media's playback or display the [MOVIE] menu.

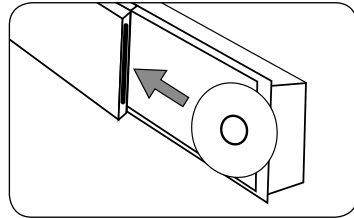
[Photo] – Displays [PHOTO] menu.

[Setup] – Displays the [Setup] menu.

### NOTE

You can not select the [Music], [Movie] or [Photo] option when the USB device is not connected or a disc is not inserted.

1. Insert the disc by using the **OPEN/CLOSE** or Connect the USB device to the USB port.



2. Press **HOME**.  
Displays the [Home] Menu.
3. Select an option by using **< >**.  
If you select the [Movie], [Photo] or [Music] option when you connect up to two devices, it appears as belows. Select a media then press **ENTER**.



4. Press **ENTER** then selected option menu.

### NOTE

- For the most Audio CD and DVD-ROM discs, playback starts automatically.
- The unit plays only music file contained in the USB storage device or disc automatically.

To	Do this
Stop	Press <b>■ (STOP)</b>
Playback	Press <b>▶ (PLAY), MONO/STEREO.</b>
Pause	Press <b>⏸ (PAUSE/STEP).</b>
Frame-by-Frame playback	Press <b>⏸ (PAUSE/STEP)</b> repeatedly to play title Frame-by-Frame. (DVD, DivX only)
Skipping to the next/previous chapter/ track/ file	During playback, press <b>⏮/⏭ SKIP</b> to go to the next chapter/ track/ file or to return to the beginning of the current chapter/ track/ file. Press <b>⏮ SKIP</b> twice briefly to step back to the previous chapter/ track/ file.
Locating a point quickly by playing a file in fast forward or fast reverse	During playback, press <b>⏩/⏪ SCAN</b> repeatedly to select the required scan speed. To return to normal speed, press <b>▶ (PLAY), MONO/STEREO.</b>
Playing repeatedly or randomly	Press <b>↺ REPEAT</b> repeatedly, and the current title, chapter or track will be played back repeatedly or randomly. - DVD : Chapter/ Title/ Off - DivX : Title/ All/ Off - Audio CD/ MP3/ WMA : Track/ All/ Random/ Off
Slowing down the playing speed	In the pause mode, press <b>SLOW (⏮ or ⏭)</b> to select the required speed. (DVD, DivX only) The DivX file cannot be slow down reverse playback.

## Other Operations

### Displaying Disc Information on-screen

You can display various information about the disc loaded on-screen.

1. Press **ⓘ INFO/DISPLAY** to show playback information.  
The displayed items differ depending on the disc type or playing status.
2. You can select an item by pressing **⤴ ⤵** and change or select the setting by pressing **< >**.

Title – Current title number/ total number of titles.

Chapter – Current chapter number/ total number of chapters.

Time – Elapsed playing time.

Audio – Selected audio language or channel.

Subtitle – Selected subtitle.

Angle – Selected angle/ total number of angles.



#### NOTE

If any button is not pressed for a few seconds, the on-screen display disappears.



## To display the DVD Menu **DVD**

When you play a DVD which contains several menu, you can select the menu you want using the Menu.

1. Press **DISC MENU**.  
The disc's menu appears.
2. Select the menu by using **^ v < >**.
3. Press **▶ (PLAY), MONO/STEREO** to confirm.

## To display the DVD title **DVD**

When you play a DVD which contains several title, you can select the title you want using the Menu.

1. Press **TITLE**.  
The disc's title appears.
2. Select the menu by pressing **^ v < >**.
3. Press **▶ (PLAY), MONO/STEREO** to confirm.

## 1.5 times speed playback **DVD**

The 1.5 speed allows you to watch the pictures and listen to the sound quicker than playing at a normal speed.

1. During playback, press **▶ (PLAY), MONO/STEREO** to play at 1.5 times speed. "▶X1.5" appears on the screen.
2. Press **▶ (PLAY), MONO/STEREO** again to exit.

## Screen Saver

The screen saver appears when you leave the unit in Stop mode for about five minutes.

## Starting play from selected time **DVD DivX**

To start playing at any chosen time on the file or title.

1. Press **□ INFO/DISPLAY** during playback.
2. Press **^ v** to select the time clock icon and "--:--" appears.
3. Input the required start time in hours, minutes, and seconds from left to right. If you enter the wrong numbers, press **CLEAR** to remove the numbers you entered. Then input the correct numbers.  
For example, to find a scene at 1 hour, 10 minutes, and 20 seconds, enter "11020" by using numerical buttons.
4. Press **⊙ ENTER** to confirm. Playback starts from the selected time.

## Resume playback

**DVD DivX ACD MP3 WMA**

The unit records the point where you pressed **■ (STOP)** depending on the disc.

If "■■■ (Resume Stop)" appears on the screen briefly, press **▶ (PLAY), MONO/STEREO** to resume playback (from the scene point).

If you press **■ (STOP)** twice or unload the disc, "■" (Complete Stop) appears on the screen. The unit will clear the stopped point.

### ! NOTE

The resume point may be cleared when a button is pressed (for example; **⏻ (POWER), ▲ OPEN/CLOSE**, etc).

## Marked Playback **ACD** **MP3**

### **WMA**


The mark function enables you to store your favourite files from any disc or USB device in the unit memory.

1. Select [Music] on the [Home] menu.

**Music menu**

Returning to the upper folder. (MP3/WMA only)

File information will be displayed according to the ID3TAG information on the appropriate music file. (MP3 only)



Selecting all tracks/ files.

Deselecting all tracks/files.

Moving to the previous or next file list.

2. Select a desired music on the [List] by using the  $\wedge \vee$  then press **MARKER** to appear the mark on the list.
3. Press  $\odot$  **ENTER** or **▶ (PLAY), MONO/STEREO**.  
Displays the play mode.
4. Select the play mode by using the  $\wedge \vee$  and press  $\odot$  **ENTER**.

**[Mark Play]**  
Marked playback.

**[Current Play]**  
Normal playback



### NOTE

If you want to select all files on the list, select [Select All] and press  $\odot$  **ENTER**.

### To delete a Marker

1. Use  $\wedge \vee$  to select the track that you wish to erase from the marked file.
2. Press **MARKER**.

### To delete all Markers

Use  $\wedge \vee < >$  to select [Deselect All] then press  $\odot$  **ENTER** in program edit mode.



### NOTE

The markers are also cleared when the disc or USB device is removed, the unit is switched to power off or the function is switched to others.

## Changing subtitle code page

### **DivX**

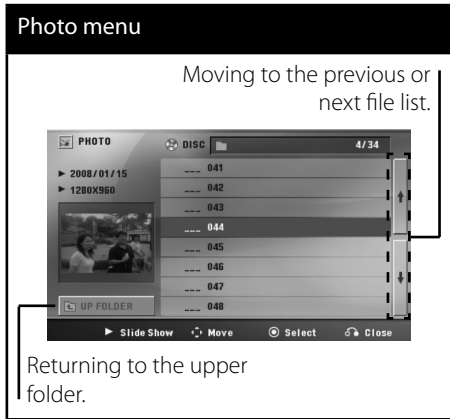
If the subtitle is not displayed properly, you can change the subtitle code page to view the subtitle file properly.

1. During playback, press  $\square$  **INFO/DISPLAY** to display the On-Screen display.
2. Use  $\wedge \vee$  to select the [Code Page] option.
3. Use  $< >$  to select desired code option.
4. Press  $\curvearrowright$  **RETURN** to exit the On-Screen display.

## Viewing a PHOTO file **JPG**

This unit can play discs with photo files.

1. Select [Photo] on the [Home] menu and press **ENTER**.



4

2. Press **^ V** to select a folder, and then press **ENTER**.
3. If you want to view a slide show, press **^ V** to highlight a file and press **▶ (PLAY)**, **MONO/STEREO**.

About help menu in the [Photo] menu.

Menu	Buttons	Operation
<b>▶ Slide Show</b>	<b>▶ (PLAY), MONO/STEREO</b>	Viewing a slide show.
<b>▲▼◀▶ Move</b>	<b>^ V &lt; &gt;</b>	Moving to another file or content.
<b>⊙ Select</b>	<b>⊙ ENTER</b>	Viewing a particular file.
<b>↶ Close</b>	<b>RETURN</b>	Returning to the [Home] menu.

About help menu in the full screen.

Menu	Buttons	Operation
<b>Menu</b>	<b>□ INFO/DISPLAY</b>	Displaying the Option menu.
<b>◀/▶ Prev./ Next</b>	<b>&lt;/&gt;</b>	Moving to another file
<b>↶ Close</b>	<b>RETURN</b>	Returning to the [Photo] menu.

## Options while viewing a photo

You can use various options while viewing a photo in full screen.

1. While viewing a photo in full screen, press **□ INFO/DISPLAY** to display the option menu.
2. Select an option using **^ V < >**.



- 1 Current photo/ Total number of photos** – Use **< >** to view previous/next photo.
- 2 Slide Show ▶/ ||** – Press **ENTER** to start or pause slide show.
- 3 Speed x3/ x2/ x1** – Use **ENTER** to select a delaying speed between photos in a slide show.
- 4 Rotate** – Press **ENTER** to rotate the photo.
- 5 Go to list** – Press **ENTER** to return [Photo] menu.



## Sleep Timer Setting


Press SLEEP repeatedly to select the desired time period options (in minutes):  
(Display window off (LCD OFF) → Sleep timer value → Display on)

In display window you see "LCD OFF" or Sleep timer value and the display window turns off. To check the remaining time, press SLEEP. To cancel the sleep function, press SLEEP repeatedly until "SLEEP 10" appears, and then press SLEEP once again while "SLEEP 10" is displayed.

### NOTE

- You can check the remaining time before the unit turns off. Press SLEEP the remaining time appears in the display window.
- When you operate the unit in sleep mode, you can see operating information in display window for about 5 seconds and the display window turns off.

## Turn off the sound temporarily


Press  **MUTE** to mute your unit.

You can mute your unit in order, for example, to answer the telephone, appearing the MUTE in the display window.

## Last Scene Memory

This unit memorizes last scene from the last disc that is viewed. The last scene remains in memory even if you remove the disc from the unit or switch off the unit. If you load a disc that has the scene memorized, the scene is automatically recalled.

## System Select - Optional

You must select the appropriate system mode for your TV system. Press and hold  (**PAUSE/STEP**) for more than five seconds to be able to select a system in the [Home] menu. (PAL/NTSC)

### NOTE

If the USB device is connected or a disc is inserted, this function is not operated.

## Adjust the speaker level settings

You can adjust the sound level of each speaker.

1. Press **SPEAKER LEVEL** repeatedly to select a desired speaker to set.
2. Press **VOL -/+** to adjust the sound level of the selected speaker while the level setting menu is displayed on the display window.
3. Repeat and adjust the sound level of the other speakers.

## VOCAL FADER

You can enjoy the function as karaoke, by reducing singer vocal of music in the various source. (MP3/WMA/CD/etc.) Press the **VOCAL FADER**, and "FADE ON" will appear in display window.

To cancel it, press **VOCAL FADER** again.

The quality of the **VOCAL FADER** may be different depending on the recording conditions of music files.

### NOTE

- This function is available to use only when a microphone is connected.
- It is not available on the MONO source.

## Radio Operations

Be sure that both FM and AM aerials are connected (Refer to the page 22)

### Listening to the radio

1. Press **RADIO&INPUT** until FM or AM appears in the display window.  
The last received station is tuned in.
2. Press and hold **TUNING** (-/+) for about two seconds until the frequency indication starts to change, then release. Scanning stops when the unit tunes in a station.

or

Press **TUNING** (-/+) repeatedly.

3. Adjust the volume by rotating **VOLUME** on the front panel or by pressing **VOL** (+/-) on the remote control repeatedly.

### Presetting the Radio Stations

You can preset 50 stations for FM and AM.

Before tuning, make sure that you have turned down the volume.

1. Press **RADIO&INPUT** until FM or AM appears in the display window.
2. Select the desired frequency by using **TUNING** (-/+).
3. Press **ENTER** a preset number will flash in the display window.
4. Press **PRESET** (-/+) to select the preset number you want.
5. Press **ENTER**.  
The station is stored.
6. Repeat the steps 2 to 5 to store other stations.

### Deleting all the saved stations

1. Press and hold **CLEAR** for two seconds.  
"ERASE ALL" will flash up on the unit display.
2. Press **CLEAR** to erase all saved of the radio stations.

### Deleting a saved station

1. Press **PRESET - / +** to select a preset number you want to delete.
2. Press **CLEAR**, the preset number will blink in the display window.
3. Press **CLEAR** again, to delete the selected preset number.

### Improving poor FM reception

Press **▶ (PLAY), MONO/STEREO** on the remote control. This will change the tuner from stereo to mono and usually improve the reception.

# Sound adjustment

## Setting the surround mode

This system has a number of pre-set surround sound fields. You can select a desired sound mode by using **SOUND EFFECT**.

You can change the **SOUND EFFECT** using < > arrow key while the sound effect information is displayed on.

The displayed items for the equalizer may be different depending on sound sources and effects.

On Display	Description
NAT PLUS	The NAT PLUS is Natural Plus sound effect. You can enjoy the natural sound effect same as a 5.1-channel.
NATURAL	You can enjoy comfortable and natural sound.
Local specialization equalizer	Regionally optimized sound effect. (DANGDUT/ ARABIC/ PERSIAN/ INDIA/ REGUETON/ MERENGUE/ SAMBA/ SALSA/ CUMBIA/ AFRO)
AUTO EQ	Realizes the sound equalizer that is the most similar to the genre of which is included in the MP3 ID3 tag of song files.
POP CLASSIC JAZZ ROCK	This program lends an enthusiastic atmosphere to the sound, giving you the feeling you are at an actual rock pop, jazz or classic concert.
BASS	The BASS is Bass Blast. During playback, reinforce the treble, bass and surround sound effect.

On Display	Description
CLRVOICE	The CLRVOICE is Clear Voice. This program make voice sound clear, improving the quality of voice sound. (We encourage to use this EQ when you watch the movie of 5.1 channel.)
GAME	The GAME is Game Equalizer. You can enjoy more virtual sound while playing video games.
NIGHT	The NIGHT is Night Mode. This may be useful when you want to watch movies at low volume late at night.
RETOUCH	The RETOUCH is MP3 Up-Scaling. When listening to MP3 files or other compressed music, you can enhance the sound. This mode is available only to 2 channel sources.
LOUDNESS	Improves the bass and treble sound.
VIRTUAL	The VIRTUAL is VSM Plus. You can enjoy more virtual surround sound.
BYPASS	You can enjoy the sound without equalizer effect.

**NOTE**

- In some of surround modes, some speakers, there's no sound or low sound. It depends on the mode of surround and the source of audio, it is not defective.
- You may need to reset the surround mode, after switching the input, sometimes even after the sound track changed.
- This function is not operated when the microphone is connected to the unit.

## Advanced Operations

### Recording to USB

You can record music or sound source to USB device by connecting to the port on the unit.

1. Connect the USB device to the unit.
2. Select a mode in which you want to record. Play back a sound source first.
3. Start the recording by pressing **REC**.
4. To stop recording, press **STOP**.

#### [All tracks/ files recording]

Record to USB in stop or play mode.

#### [Program list recording]

After marking desired file(s) and you can record it to USB (Refer to the page 31).

#### It'll be stored as follows

<b>Audio CD</b>	<pre> CD_REC ├── TRK_001 ├── TRK_002 ├── ... </pre>
<b>MP3/ WMA</b>	<pre> FILE_REC ├── 001_ABC(File name) ├── 002_DEF(File name) ├── ... </pre>
<b>The other sources (Tuner, AUX, Portable)</b>	<pre> EXT_REC ├── AUDIO_001 ├── AUDIO_002 ├── ... </pre>



### NOTE

- You can check the recording percentage rate for the USB record on the screen during the recording. (Audio CD or MP3/ WMA CD only)
- During recording MP3/WMA, there is no sound.
- When you stop recording during playback, the file that has been recorded at that time will be stored. (Audio CD only)
- Do not remove the USB device or turn off the unit during USB recording. If not, an incomplete file may be made and not deleted on PC.
- Recording through microphones is not available.
- If USB recording does not work, the message like "NO USB", "ERROR", "USB FULL" or "NO REC" is displayed on the display window.
- Multi card reader device or external HDD can not be used for USB recording.
- A file is recorded by 128 Mbyte (about 2 hours) when you record for a long term. There are recorded less than 4 files.
- When you stop recording during playback, the file will not be stored.
- In the state CD-G, DTS disc USB record is not operated.
- The files in the sub-folders are not recorded during all track recording.
- You may not record more than 999 files.
- The numbering of the recording file is entered from the lowest number. So if you delete some of the recording files, the next recording file could be the lowest number among them.

The making of unauthorized copies of copy-protected material, including computer programs, files, broadcasts and sound recordings, may be an infringement of copyrights and constitute a criminal offense. This equipment should not be used for such purposes.

**Be responsible  
Respect copyrights.**

# 5 Maintenance

## Notes on Discs

### Handling Discs

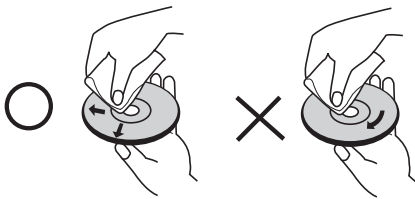


Never stick paper or tape on the disc.

### Storing Discs

After playing, store the disc in its case. Do not expose the disc to direct sunlight or sources of heat and never leave it in a parked car exposed to direct sunlight.

### Cleaning Discs



Do not use strong solvents such as alcohol, benzene, thinner, commercially available cleaners, or anti-static spray intended for older vinyl records.

## Handling the Unit

### When shipping the unit

Please save the original shipping carton and packing materials. If you need to ship the unit, for maximum protection, re-pack the unit as it was originally packed at the factory.

Keeping the exterior surfaces clean

- Do not use volatile liquids such as insecticide spray near the unit.
- Wiping with strong pressure may damage the surface.
- Do not leave rubber or plastic products in contact with the unit for a long period of time.

### Cleaning the unit

To clean the player, use a soft, dry cloth. If the surfaces are extremely dirty, use a soft cloth lightly moistened with a mild detergent solution. Do not use strong solvents such as alcohol, benzene, or thinner, as these might damage the surface of the unit.

### Maintaining the Unit

The unit is a high-tech, precision device. If the optical pick-up lens and disc drive parts are dirty or worn, the picture quality could be diminished. For details, please contact your nearest authorized service center.

# 6

## Troubleshooting

PROBLEM	CAUSE	CORRECTION
No power	The power cord is disconnected.	Plug the power cord into the wall outlet securely.
No picture	The TV is not set to receive the DVD signal.	Select the appropriate video input mode on the TV so the picture from the unit appears on the TV screen.
	The video cables are not connected securely.	Connect the video cables securely to both the TV and unit.
There is little or no sound	Equipment connected via the audio cable is not set to receive DVD signal output.	Select the correct input mode of the unit so you can hear the sound from the unit.
	The audio cables are not connected to the speakers or unit securely.	Connect the audio cables into the connection terminals correctly.
	The audio cables are damaged.	Replace with a new audio cable.
The DVD picture quality is poor	The disc is dirty.	Clean the disc using a soft cloth with outward strokes.
A DVD/CD will not play	No disc is inserted.	Insert a disc.
	An unplayable disc is inserted.	Insert a playable disc (check the disc type, colour system and regional code).
	The disc is inserted upside down.	Place the disc with the label or printed side facing upwards.
	There is a parental lock which prevents the playback of DVDs with a certain rating.	Enter your password or change the rating level.
Humming noise heard while a DVD or CD is playing	The disc is dirty.	Clean the disc using a soft cloth with outward strokes.
	The unit is located too close to the TV, causing feedback.	Move unit and audio components further away from your TV.
Radio stations can't be tuned in properly	The antenna is positioned or connected poorly.	Check the antenna connection and adjust its position. Attach an external aerial if necessary.
	The signal strength of the radio station is too weak.	Tune to the station manually.
	No stations have been preset or preset stations have been cleared (when tuning by scanning preset channels).	Preset some radio stations, see page 34 for details.
The remote control doesn't work well / at all	The remote is not pointed directly at the unit.	Point the remote directly at the unit.
	The remote is too far from the unit.	Use the remote within 23 feet (7m) of the unit.
	There is an obstacle in the path between the remote control and the unit.	Remove the obstacle.
	The batteries in the remote control are flat.	Replace the batteries with new ones.

# 7

## Appendix

### Language Codes

Use this list to input your desired language for the following initial settings: Disc Audio, Disc Subtitle, Disc Menu.

Language	Code	Language	Code	Language	Code	Language	Code
Afar	6565	French	7082	Lithuanian	7684	Singhalese	8373
Afrikaans	6570	Frisian	7089	Macedonian	7775	Slovak	8375
Albanian	8381	Galician	7176	Malagasy	7771	Slovenian	8376
Ameharic	6577	Georgian	7565	Malay	7783	Spanish	6983
Arabic	6582	German	6869	Malayalam	7776	Sudanese	8385
Armenian	7289	Greek	6976	Maori	7773	Swahili	8387
Assamese	6583	Greenlandic	7576	Marathi	7782	Swedish	8386
Aymara	6588	Guarani	7178	Moldavian	7779	Tagalog	8476
Azerbaijani	6590	Gujarati	7185	Mongolian	7778	Tajik	8471
Bashkir	6665	Hausa	7265	Nauru	7865	Tamil	8465
Basque	6985	Hebrew	7387	Nepali	7869	Telugu	8469
Bengali; Bangla	6678	Hindi	7273	Norwegian	7879	Thai	8472
Bhutani	6890	Hungarian	7285	Oriya	7982	Tonga	8479
Bihari	6672	Icelandic	7383	Panjabi	8065	Turkish	8482
Breton	6682	Indonesian	7378	Pashto, Pushto	8083	Turkmen	8475
Bulgarian	6671	Interlingua	7365	Persian	7065	Twi	8487
Burmese	7789	Irish	7165	Polish	8076	Ukrainian	8575
Byelorussian	6669	Italian	7384	Portuguese	8084	Urdu	8582
Chinese	9072	Javanese	7487	Quechua	8185	Uzbek	8590
Croatian	7282	Kannada	7578	Rhaeto-Romance	8277	Vietnamese	8673
Czech	6783	Kashmiri	7583	Rumanian	8279	Volapük	8679
Danish	6865	Kazakh	7575	Russian	8285	Welsh	6789
Dutch	7876	Kirghiz	7589	Samoan	8377	Wolof	8779
English	6978	Korean	7579	Sanskrit	8365	Xhosa	8872
Esperanto	6979	Kurdish	7585	Scots Gaelic	7168	Yiddish	7473
Estonian	6984	Laothian	7679	Serbian	8382	Yoruba	8979
Faroese	7079	Latin	7665	Serbo-Croatian	8372	Zulu	9085
Fiji	7074	Latvian, Lettish	7686	Shona	8378		
Finnish	7073	Lingala	7678	Sindhi	8368		

## Area Codes

Choose an area code from this list.

Area	Code	Area	Code	Area	Code
Afghanistan	AF	Greenland	GL	Paraguay	PY
Argentina	AR	Hong Kong	HK	Philippines	PH
Australia	AU	Hungary	HU	Poland	PL
Austria	AT	India	IN	Portugal	PT
Belgium	BE	Indonesia	ID	Romania	RO
Bhutan	BT	Israel	IL	Russian Federation	RU
Bolivia	BO	Italy	IT	Saudi Arabia	SA
Brazil	BR	Jamaica	JM	Senegal	SN
Cambodia	KH	Japan	JP	Singapore	SG
Canada	CA	Kenya	KE	Slovak Republic	SK
Chile	CL	Kuwait	KW	Slovenia	SI
China	CN	Libya	LY	South Africa	ZA
Colombia	CO	Luxembourg	LU	South Korea	KR
Congo	CG	Malaysia	MY	Spain	ES
Costa Rica	CR	Maldives	MV	Sri Lanka	LK
Croatia	HR	Mexico	MX	Sweden	SE
Czech Republic	CZ	Monaco	MC	Switzerland	CH
Denmark	DK	Mongolia	MN	Taiwan	TW
Ecuador	EC	Morocco	MA	Thailand	TH
Egypt	EG	Nepal	NP	Turkey	TR
El Salvador	SV	Netherlands	NL	Uganda	UG
Ethiopia	ET	Netherlands Antilles	AN	Ukraine	UA
Fiji	FJ	New Zealand	NZ	United States	US
Finland	FI	Nigeria	NG	Uruguay	UY
France	FR	Norway	NO	Uzbekistan	UZ
Germany	DE	Oman	OM	Vietnam	VN
Great Britain	GB	Pakistan	PK	Zimbabwe	ZW
Greece	GR	Panama	PA		



## Trademarks and Licenses



Manufactured under license from Dolby Laboratories. Dolby and the double-D symbol are trademarks of Dolby Laboratories.



HDMI, the HDMI logo and High-Definition Multimedia Interface are trademarks or registered trademarks of HDMI licensing LLC.



"DVD Logo" is a trademark of DVD Format/Logo Licensing Corporation.



DivX is a registered trademark of DivX, Inc., and is used under license.



### What is SIMPLINK?

Some functions of this unit are controlled by TV's remote control when this unit and LG TV with SIMPLINK are connected through HDMI connection. Controllable functions by LG TV's remote control; Play, Pause, Scan, Skip, Stop, Power Off, etc.

- Refer to the TV owner's manual for the details of SIMPLINK function.
- LG TV with SIMPLINK function has the logo as shown above.
- Use a higher version cable than 1.2 A HDMI cable.

# Specifications

## General

- Power requirements:  
Refer to main label.
- Power consumption:  
Refer to main label.
- Dimensions (W x H x D):  
800 X 160 X 80 mm without foot
- Net Weight (Approx.):  
4.6 kg
- Operating temperature:  
41 °F to 95 °F (5 °C to 35 °C)
- Operating humidity:  
5 % to 90 %
- Bus Power supply (USB):  
DC 5 V  $\equiv$  500 mA

## Inputs/ Outputs

- VIDEO OUT:  
1.0 V (p-p), 75  $\Omega$ , sync negative, RCA jack x 1
- HDMI OUT (video/audio):  
19 pin (HDMI standard, Type A)  
HDMI version : 1.2A
- ANALOG AUDIO IN:  
2.0 Vrms (1 kHz, 0 dB), 600  $\Omega$ , RCA jack (L, R) x 1
- DIGITAL IN (OPTICAL IN):  
3 V (p-p), Optical jack x 1
- PORT. IN:  
0.5 Vrms (3.5 mm stereo jack)

## Tuner

- FM Tuning Range:  
87.5 to 108.0 MHz or 87.50 to 108.00 MHz
- AM Tuning Range:  
522 to 1 620 kHz, 520 to 1 710 kHz or  
522 to 1 710 kHz

## Amplifier

- Stereo mode: 75 W + 75 W (4  $\Omega$  at 1 kHz)
- Subwoofer 150 W (3  $\Omega$  at 60 Hz)

## Wireless subwoofer

- Power requirements:  
Refer to main label on the Subwoofer.
- Power consumption:  
Refer to main label on the Subwoofer.
- Reception Output:  
5.8 GHz
- Subwoofer
 

Type:	1 Way 1 speaker
Impedance Rated:	3 $\Omega$
Input Power:	150 W
Max. Input power:	300 W
Net Dimensions (W x H x D):	196 x 390 x 356 mm
Net Weight:	7.1 kg

Designs and specifications are subject to change without prior notice.

