



**LG**

Life's Good

# LG External HDD

External Hard Disk Drive



- Thank you for purchasing this product.
- This user manual contains instructions on how to use the product properly.
- Please read this manual carefully.
- Be sure to follow the instructions and notices.
- Backup Program (PC Clone EX) and its manual are in the external HDD or Install CD.
- Appearance of product may differ from the image.

# Warning & Caution During Use

## ⦿ Check before use

- This user manual contains instructions on how to use the product properly.
- Please read this manual carefully.
- Be sure to follow the instructions and notices.

- Notes are divided into “Warning” and “Caution”, each denotes the following:



Warning

Failure to follow the instructions below may result in injuries or product damage.



Caution

Failure to follow the instructions below may result in serious injuries or product damage.



Tip

It provides a recommendation to prevent product failure or malfunction in advance when using the product.

## ⦿ Warning and Caution



Warning

- It may cause defect under following circumstance.
  - Keep away from humidity, dust, and soot (may cause fire or electrocution)
  - Keep away from areas with temperature of above 35 °C(95 °F)
  - Keep away from magnetic fields, water, heat
  - Do not use during thunder and lightning.
  - Do not drop the product or place heavy objects on it.
- The product may not work properly in areas with high static electricity.
- Make sure no dust or other foreign matter gets inside the USB port. It may cause data damage.
- Keep important data separately. We shall not be responsible for any loss of or damage to saved or recorded data caused by product defect, product repair, or any other reason.



Caution

- If smoke, unpleasant odor or noise is produced, turn off the computer and peripherals immediately and remove the USB cable.
- Do not disassemble, repair or rebuild the product.
- Do not pull out the USB cable while the external HDD is connected.  
(The product may cause malfunction.)

# Warranty & Caution During Use



## Caution

- LG Electronics will replace this product if it is faulty due to a manufacturing or materials defect, except where damage is caused by your use or negligence.
- **LG EXCLUDES LIABILITY FOR ALL CONSEQUENTIAL AND OTHER LOSS, INCLUDING LOSS OF DATA.**

## Warranty

1. Any defect found after normal use and during the warranty period shall be repaired free of charge.
2. Fees shall be charged for the type of repair other than that covered by the warranty even during the warranty period.
3. Present this warranty when requesting for repair.

The following repair services shall be provided for a fee:

- Defect caused by careless use.
- Defect caused by repair performed at places other than the authorized service centers.
- Defect caused by the disassembly of the device by the user.
- Defect caused by natural disasters such as flood, fire, and earthquake.

# Table of Contents

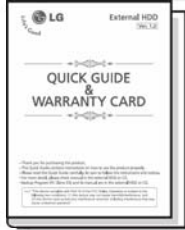
● Warning & Caution During Use .....	2
● Table of Contents .....	4
● Package Contents .....	5
● Name of Parts & Connect Cable .....	5
● USB Port Connect .....	6
- Windows User	
- Mac OS User	
● Safely remove .....	8
● Partition Creation and Format .....	9
● Mac Format .....	10
● Backup Program (PC Clone EX) .....	11
● Troubleshooting .....	19
● LG Service Site .....	20

# Package Contents

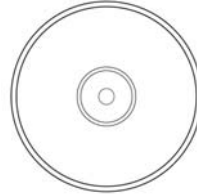
## Components



1. LG External HDD



2. Quick Guide



3. Install CD



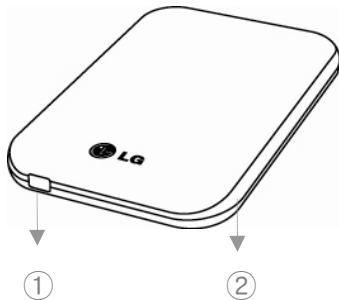
4. USB Y-cable

- ※ The components are subject to change without prior notice.
- ※ Appearance of product may differ from the image.
- ※ Windows 98/SE user must install the driver in the Install CD or Website.  
([www.lgservice.com](http://www.lgservice.com), [www.lge.com](http://www.lge.com))

# Name of Parts & Connect Cable

## Name of parts

- USB Model

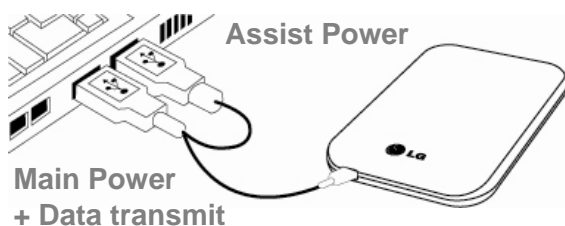


- ① USB port
- ② LED

### [LED Operation Status]

- LED flashes during reading from or writing to the external HDD.

## Connect cable



### Tip

\* If the external HDD is not recognized or power is insufficient, use the USB Y-cable to connect.

# USB Port Connect

## ⊙ Windows User

- Windows 98/ME/2000/XP/Vista, Windows 7

### ● Connecting to Windows ME/2000/XP/VISTA, Windows 7

- When connected to a computer using the USB cable, the external HDD is recognized and can be used immediately.

※ When installing on Windows ME, and files such as usbntmap.sys are being requested, specify the base2.cab file in the Win9X folder on the Windows ME original CD to enable automatic installation.

- If the mobile storage is connected properly to your computer, the mobile storage icon will appear in the notification area.

(The icon shape may vary according to your computer environment.)

### ● Windows 98/SE Driver install

※ Do not install Windows 98 Driver for Windows ME/2000/XP/Vista, Windows 7 users

1. Insert Install CD to your computer. (or download Windows98 driver on website)

2. Run SETUP.EXE in the Windows 98 Driver folder.

3. After completing the installation of the driver through SETUP, connect the external HDD to the PC.

4. When the external HDD is connected, Add New Hardware Wizard runs, and driver setup is completed in most cases. If the proper driver is not configured, select the Windows 98 Driver folder when the “Specify a location” prompt for installing a driver appears.

※ A new driver letter will not be generated when an NTFS-formatted external HDD is mounted. In this case, convert to FAT32 to enable recognition by Windows 98 and ME.

# USB Port Connect

## Mac User

### - Mac OS

#### ● Connecting to Mac OS

1. There is no need to install an additional driver on Mac OS 10.0 or later.
2. When using Mac OS, format as extended Mac format (HFS+).

※ If formatted as NTFS, the external HDD can be recognized by Mac; data cannot be copied to/from it, however. Format as FAT32 to enable use in both PC and Mac. Format on the PC using the program provided with the Install CD or on Mac using Disk Utilities.



#### Tip

If formatted as FAT 32 on PC, the following problems may occur on Mac:

- Files more than 4GB cannot be copied at one time.
- The attribute of the compression file is not changed when files such as Quick data are included.
- The size of the stored data is increased. Thus, formatting as extended format on Mac is recommended.

#### ● Safely remove (unplug)

1. Remove the device after moving the driver icon of the device to “Trash.”



#### Warning

※ Failure to move the driver icon of the device to “Trash” before removing the device may cause damage to the volume of the disk.

# Safely remove (Unplug)

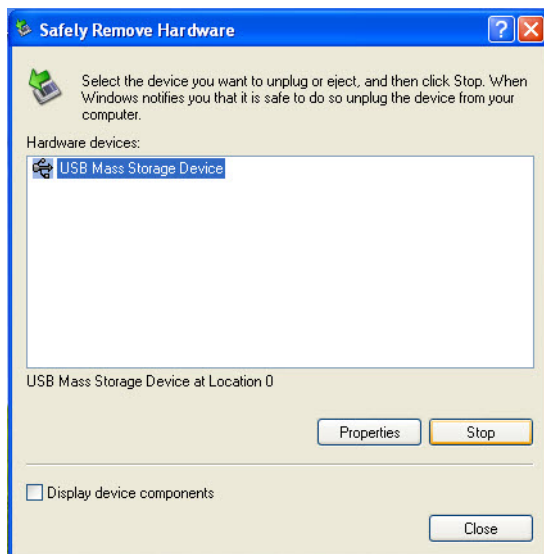
## ● Safely remove (unplug)

※ Removing the external HDD from the PC without following the safe removal instruction may cause problem to the stored data or operation of the external HDD.

1. Double-click the Safely Remove Hardware Icon in the notification area.



2. On the window, click the Stop button followed by OK.



3. When the message indicates that is safe to remove the device appears, click OK and remove the external HDD after checking LED Operation Status.





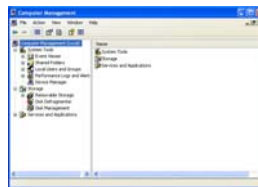
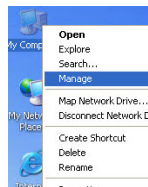
# Partition Creation and Format

## ● Windows 2000/XP User

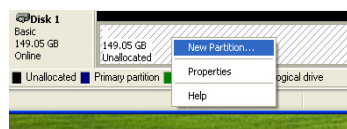
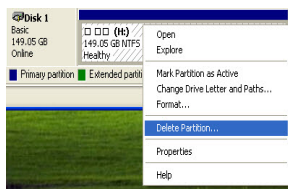
- LG external HDD is already NTFS-formatted, but if you want to create or divide partition, follow this instruction.

**(Attention:** all data in external HDD will be deleted if you use this function.)

1. Left button click “My Computer” and Click “Manage”.
2. Click the Disk Management.



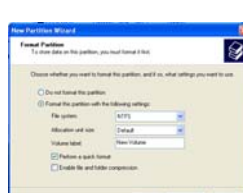
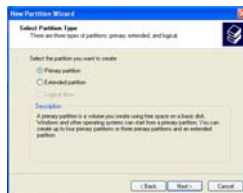
3. Choose the Disk Drive you want to delete partition and click “Delete Partition”.
4. Choose the Disk Drive which is partition deleted and click “New Partition”.



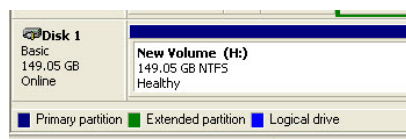
5. Click “Next” at the New Partition Wizard and select “Primary Partition”.
6. Choose the partition size and click “Next”.



7. Assign drive letter or path and click “Next”.
8. Choose “NTFS” and check “Perform a quick format” and click “Next”.



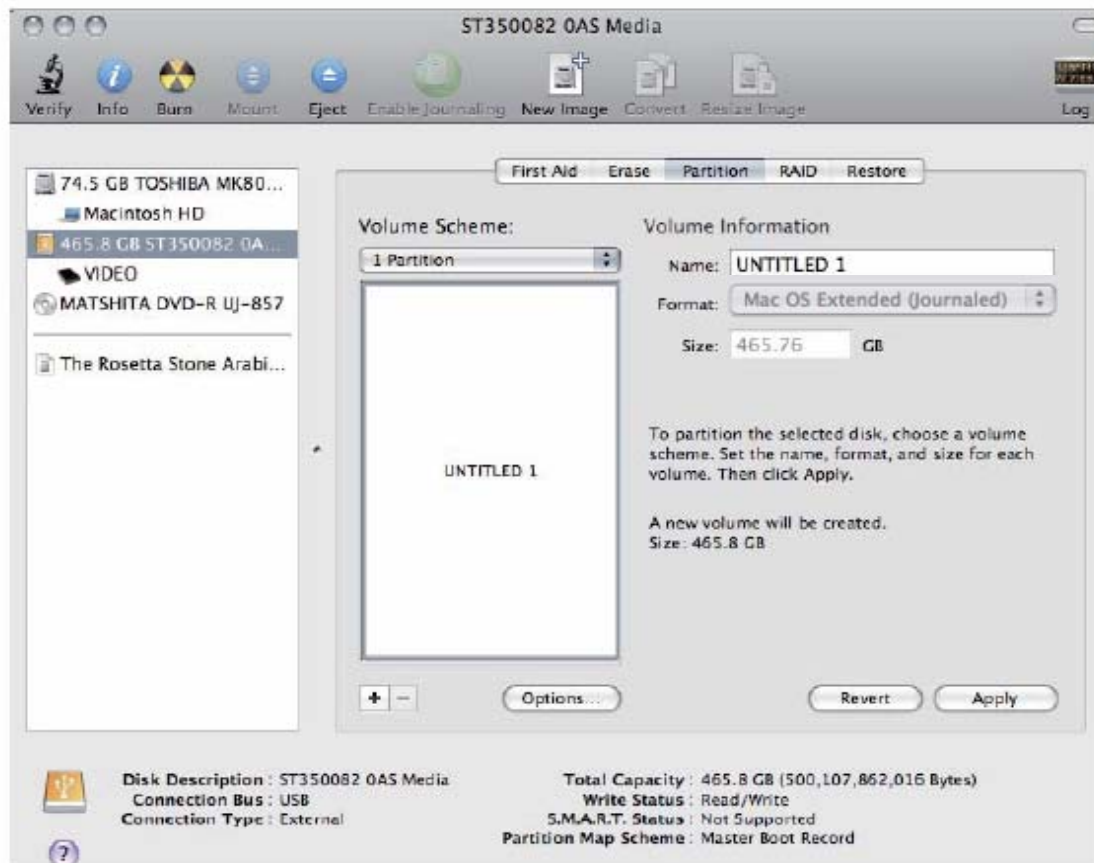
9. Click “Finish” to complete New Partition Wizard. NTFS format is completed.



※ If you want FAT32-Format, the size of partition should be under 32GB.

# Mac Format

## Mac format



1. Connect the external HDD to your Mac.
2. Go to [Finder Menu Bar] → [Go Menu] → [Utilities], double click [Disk Utility].
3. Select the external HDD and choose the partition tab.
4. In the [Volume Scheme], select the number and size of partitions (maximum 16 partitions).
5. In the [Volume Option], enter the name and choose [Mac OS Extended (journaled)].
6. Click [Apply], to start formatting. It could take several minutes depending on your Mac.

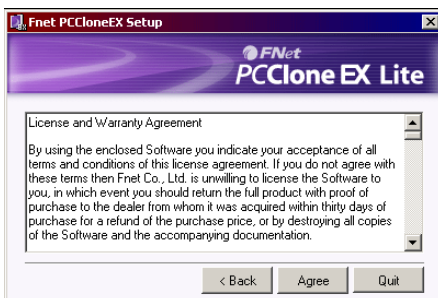
# Backup Program (PC Clone EX)

## Software Installation



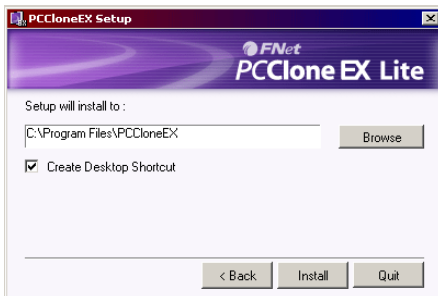
1. Please put the Install CD into CD ROM drive, the program directly goes on the autorun program. (In case the screen doesn't come out, please operate the window box of "setup.exe")

2. Click "Backup Program" and click "install".

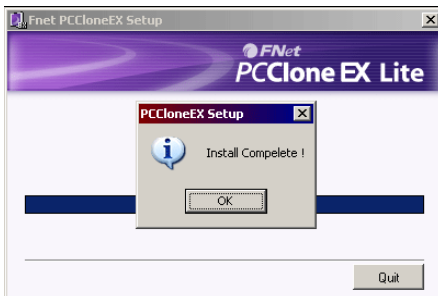


3. Please read the license agreement in detail.

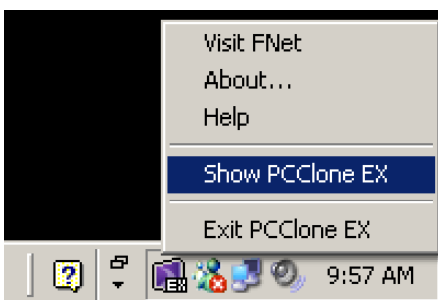
4. If users accept the agreement, please click "Agree" to install.



5. Please setup the installing pathway, and then click "Install" to next.



6. The installation is completed, please click "OK" to exit.



7. "PCClone EX" icon will displays in the notification area after setup; users can double-click the icon or press the right key of the mouse to execute PCClone EX Lite.

# Backup Program (PC Clone EX)

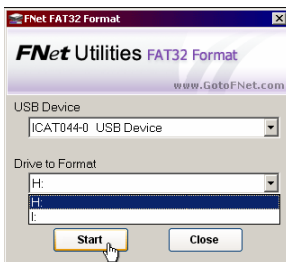
## FAT32 Format Utility

For the current HDD capacity is getting bigger, the Fat32 Format Utility in Windows 2000 / XP is not able to support the HDD size exceeding 32GB; FNet recommends FNet Fat 32 Format Utility, which can format the large capacity to be FAT32 Format rapidly and fully, the size even maximums up to 4 TB (4000GB).

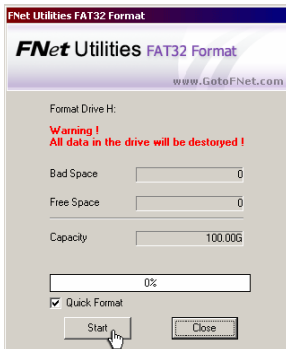
**(Attention: all data in external HDD will be deleted if you use this function)**



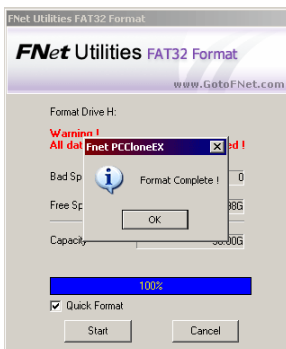
1. Please plug external HDD, and turn on the computer.
2. Click "Start" → "All programs" → "PCClone EX" → "FNet FAT32 Format" .



3. Confirm the " USB Device" and "Drive to Format" in the FAT32 Format Utility, and then press "start".



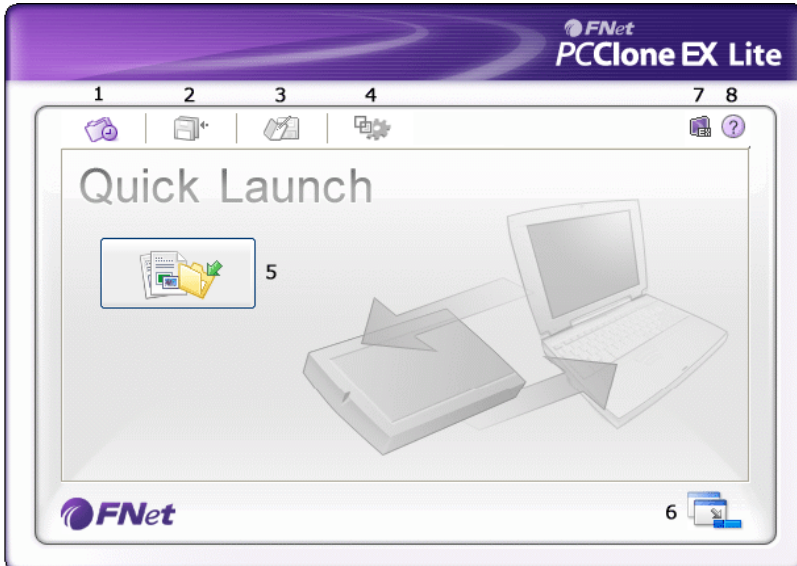
4. Tick " Quick Format" and click "Start" for executing.  
**(Attention: all data in external HDD will be deleted if you use this function)**



5. The window shows in progress.

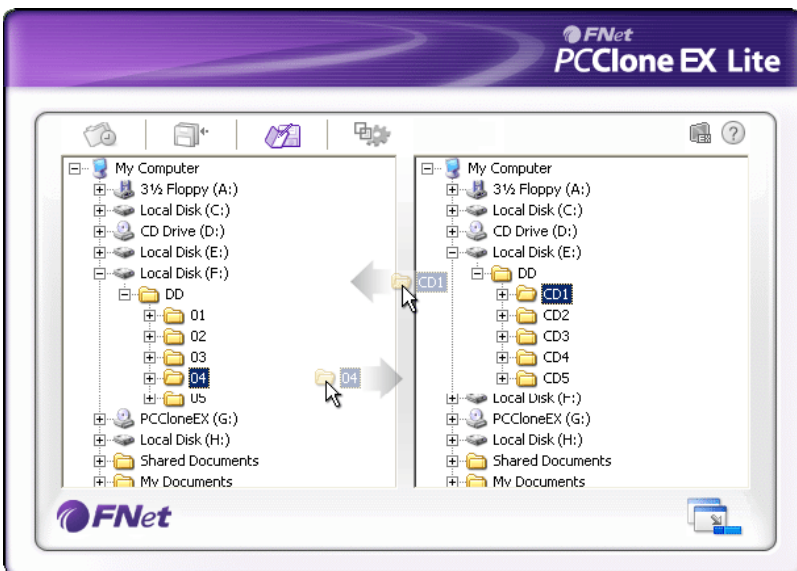
# Backup Program (PC Clone EX)

## Quick Launch



1. Quick Launch.
2. File Backup.
3. File Manager.
4. Setup.
5. File Backup.
6. Minimized.
7. About.
8. Help.

## File Manager

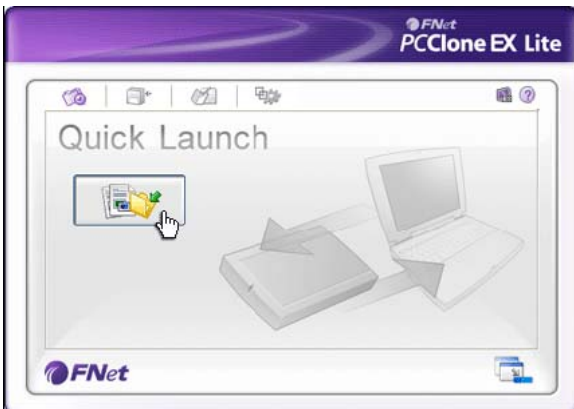


- ※ PCClone EX Lite Manager function is the same as Windows Explorer. PC users can directly drag the files forward and backward between the fixed device & USB device.
- ※ It is convenient for users who manage or check their files without clicking the icon of “Windows Explorer” or “My Computer”.

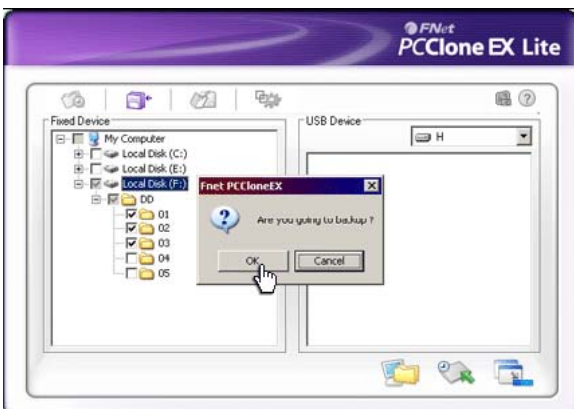
# Backup Program (PC Clone EX)

## Quick File Backup

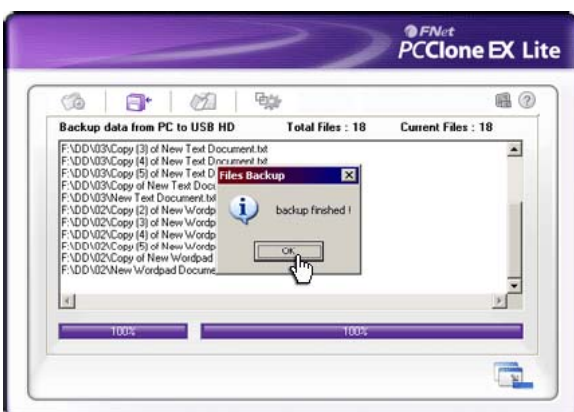
Users can directly execute “File Backup” from Quick Launch, only one step, and the system data will be backed up easily. (For the first time using, please refer to the subject of “File Backup”)



1. Please plug the external HDD into PC
2. Execute PCClone EX Lite.
3. Go on PCClone EX Lite /Quick Launch Screen.
4. Click “File Backup”.



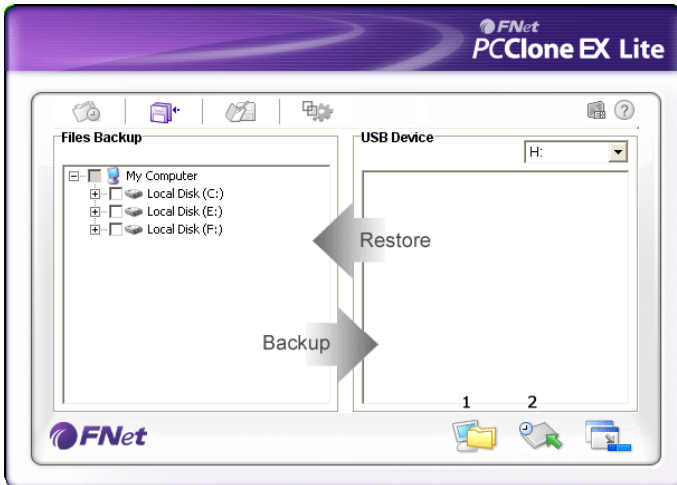
5. Appearing a dialog screen, please click “OK” to backup.



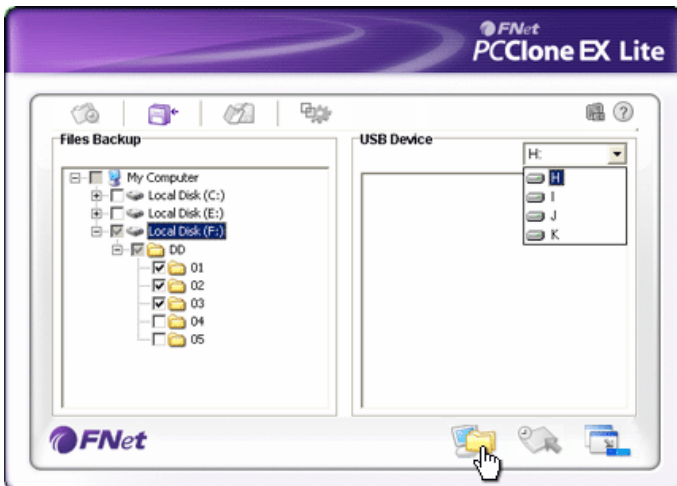
6. When backup is in progress, the widow shows progress and proceed time
7. When backup is done, click “OK” for backup finish! (The file backup has been successfully through PCClone EX Lite into external HDD).

# Backup Program (PC Clone EX)

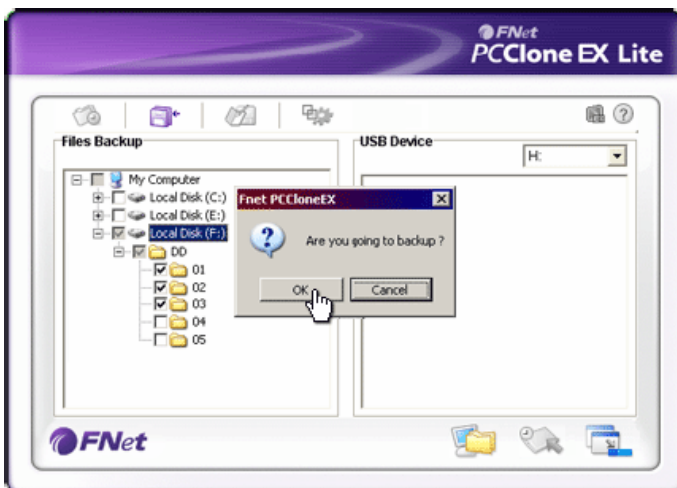
## File Backup



1. File Backup.
2. File Restore.

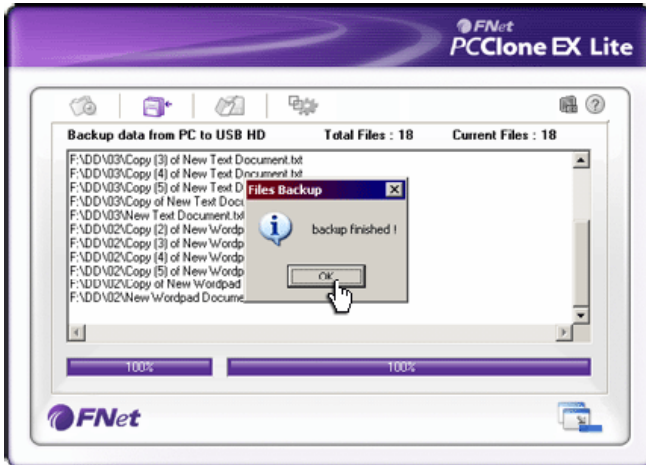


1. Please plug the USB HDD into the computer, and turn on the power.
2. Execute PCClone EX Lite.
3. Click "File backup".
4. Select folders / drives from the fix device.
5. Set one of USB devices for backup. (Please refer to "Setup", and then set some options for the first time using.)

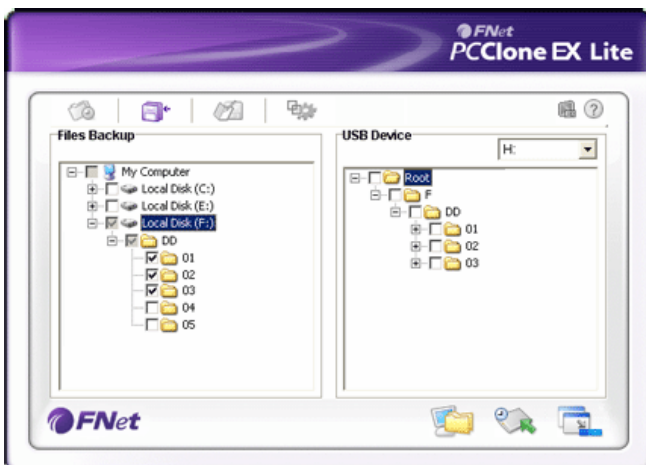


6. Select "Backup" and press "OK" to start.

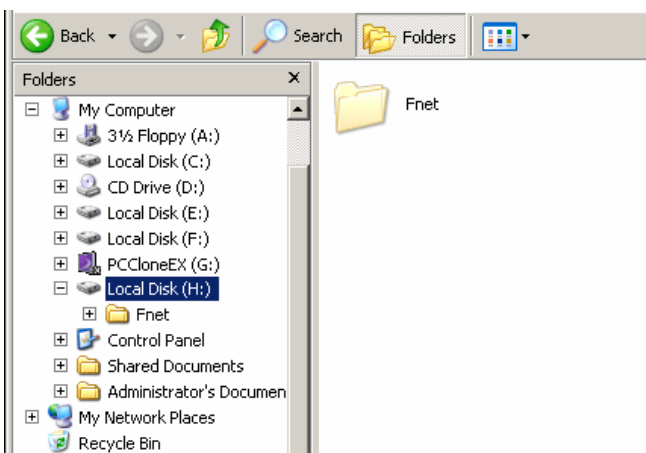
# Backup Program (PC Clone EX)



7. Backup is completed, please press "OK".



8. The selected folders have been moved from the fixed device to the USB device successfully.

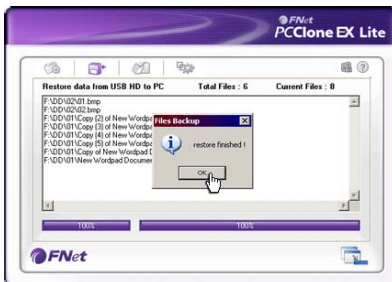
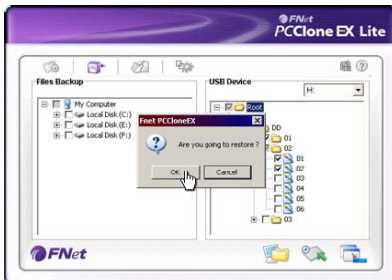
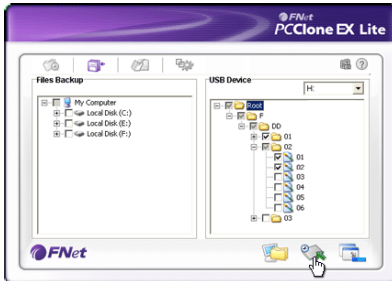


9. There is a hidden root directory F: FNet in the USB device, all the file backups are kept in there. Be careful, don't delete it carelessly.



# Backup Program (PC Clone EX)

## File Restore

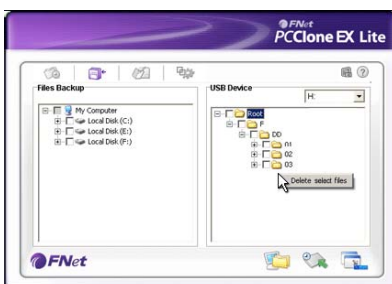


1. Please plug the external HDD.
2. Execute PCClone EX Lite.
3. Go on the PCClone EX Lite screen.
4. Click “File Backup”.
5. Select folders/files of USB Device you would like to restore.

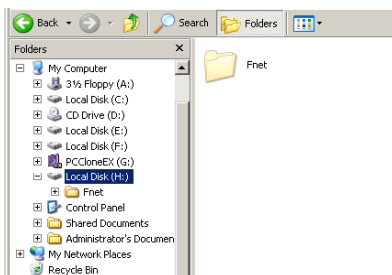
6. Click “Restore”, then press “OK” to start.

7. When “Restore” is finished, please press “OK”.

## Erase File Backup



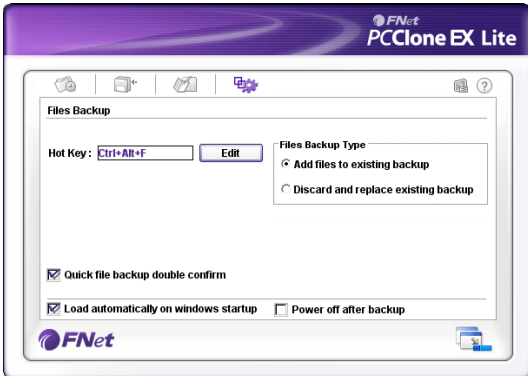
1. Please plug external HDD.
2. Execute PCClone EX Lite.
3. Go on PCClone EX Lite screen.
4. Select the “File backup” of USB Device, then, right click the mouse to click “Delete select Files”, all select files in the USB device will be deleted.



5. Otherwise, delete the root directory F: FNet directly; it will also work.

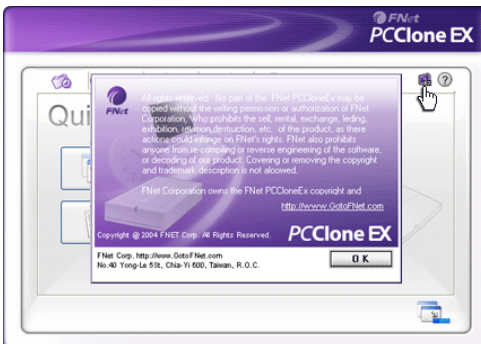
# Backup Program (PC Clone EX)

## Setup

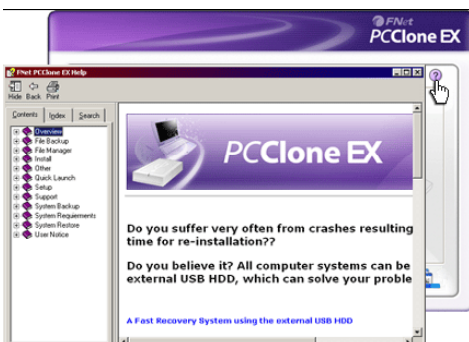


- ※ **Hot Key setup** : When users click “ Edit”, which can be made up of their own hot key by choosing “Ctrl”, “shift”, “Alt” and Added a number, or a letter, or function key, or whatever they want to consist of a hot key. Thus, every user has their own edited key to do file backup.
- ※ **File backup mode** : There are two modes for file backups; one is “Add~”, this function only backs up additional files to the external USB HDD; the other one is “Discard~”, this function duplicates all data & OS from your PC to the external HDD.
- ※ **Confirmation** : When users back up using their hot key, a default dialog box will pop up to asking for confirmation. If users want to backup directly, please cancel the default.

## Other



- ※ Concerning PCClone EX Lite spec, please click the icon of “PCClone EX Lite” on the right side of upper corner of the screen , or right click the icon of “PCClone EX Lite” in the notification area.



- ※ Please click the icon of “PCClone EX Lite” on the right side of upper corner of screen, “About PCClone EX ”dialog will display and assist to recognize PCClone EX Lite.

# Troubleshooting

## 1. Once connected, the external HDD is recognized but not displayed.

Make sure that the mounted external HDD is initialized, partitioned, and formatted.

## 2. Files larger than 2GB cannot be copied to the external HDD on Mac.

The partition of the external HDD is FAT 32. Set the partition to extended partition (HFS+) on Mac OS.

## 3. During the installation of an external HDD on Windows ME, files such as `usbntmap.sys` are requested.

The files are in the `base2.cab` of the `WIN9X` folder on the Windows ME original CD. Specify this folder to complete installation.

## 4. The formatted external HDD is recognized on Windows 2000 and XP but not on Windows 98SE and ME.

This is due to the difference in format type. Windows 98SE and ME support FAT 32 only, whereas Windows 2000 and XP support both FAT 32 and NTFS. Format as FAT 32 to enable recognition by all Windows systems.

## 5. Power is insufficient.

[Major symptoms]

Not recognized/Sometimes recognized/Tick sound heard/Data move failed/Driver disappeared.

[Solution]

Connect all USB Y-cables, connect directly to the rear of the PC.

## 6. Data in external HDD is lost.

Data may be lost when running Disk Defragmenter or Scan Disk with "Precise."

Data may be lost due to shock when the external HDD is operating.

Data opened after a fast format may be lost.

## 7. The "Hi-Speed USB device is connected to a Non Hi-Speed USB hub" message is displayed.

This message is displayed when an external HDD is connected to a USB 1.1 host adapter (12Mbps max) or if the USB driver is incorrect.

In this case, purchase a USB 2.0 hub or install the driver manually.

## 8. Check the sequence when the external driver does not work.

- Check whether the USB cable is connected correctly.
- Check the operation of LED.
- Check the driver recognition.
- Check if the internal motor of the external HDD works during operation.
- Check the normal operation of the USB port from the Control Panel in the following sequence:
  - 1) Windows 2000/XP/VISTA, Windows 7  
Control Panel → System → Hardware → Device Manager → Common Parallel Bus Controller
  - 2) Windows 98SE/ME  
Control Panel → System → Hardware → Device Manager → Universal Parallel Bus Controller

# LG Service Site

## Asia (Country / Region)

Azerbaijan	<a href="http://www.lgservice.com">http://www.lgservice.com</a>
Bangladesh	<a href="http://www.lgservice.com">http://www.lgservice.com</a>
Brunei	<a href="http://www.lgservice.com">http://www.lgservice.com</a>
Cambodia	<a href="http://www.lgservice.com">http://www.lgservice.com</a>
China	<a href="http://china.lgservice.com">http://china.lgservice.com</a>
Hong Kong	<a href="http://hk.lgservice.com">http://hk.lgservice.com</a>
India	<a href="http://in.lgservice.com">http://in.lgservice.com</a>
Indonesia	<a href="http://id.lgservice.com">http://id.lgservice.com</a>
Japan	<a href="http://jp.lgservice.com">http://jp.lgservice.com</a>
Kazakhstan	<a href="http://kz.lgservice.com">http://kz.lgservice.com</a>
Korea	<a href="http://www.lgservice.co.kr">http://www.lgservice.co.kr</a>
Kyrgyzstan	<a href="http://www.lgservice.com">http://www.lgservice.com</a>
Macau	<a href="http://mo.lgservice.com">http://mo.lgservice.com</a>
Malaysia	<a href="http://my.lgservice.com">http://my.lgservice.com</a>
Myanmar	<a href="http://www.lgservice.com">http://www.lgservice.com</a>
Nepal	<a href="http://www.lgservice.com">http://www.lgservice.com</a>
Philippines	<a href="http://ph.lgservice.com">http://ph.lgservice.com</a>
Singapore	<a href="http://sg.lgservice.com">http://sg.lgservice.com</a>
Sri Lanka	<a href="http://www.lgservice.com">http://www.lgservice.com</a>
Taiwan	<a href="http://www.lgservice.com">http://www.lgservice.com</a>
Tajikistan	<a href="http://www.lgservice.com">http://www.lgservice.com</a>
Thailand	<a href="http://th.lgservice.com">http://th.lgservice.com</a>
Turkmen	<a href="http://www.lgservice.com">http://www.lgservice.com</a>
Uzbekistan	<a href="http://www.lgservice.com">http://www.lgservice.com</a>
Vietnam	<a href="http://vn.lgservice.com">http://vn.lgservice.com</a>

## Africa (Country/Region)

Algeria	<a href="http://dz.lgservice.com">http://dz.lgservice.com</a>
Angola	<a href="http://ao.lgservice.com">http://ao.lgservice.com</a>
Benin	<a href="http://bj.lgservice.com">http://bj.lgservice.com</a>
Botswana	<a href="http://www.lgservice.com">http://www.lgservice.com</a>
Burkina Faso	<a href="http://bf.lgservice.com">http://bf.lgservice.com</a>
Cameroon	<a href="http://cm.lgservice.com">http://cm.lgservice.com</a>
Canary Islands	<a href="http://cn.lgservice.com">http://cn.lgservice.com</a>
Egypt	<a href="http://eg.lgservice.com">http://eg.lgservice.com</a>
Ethiopia	<a href="http://et.lgservice.com">http://et.lgservice.com</a>
Gabon	<a href="http://ga.lgservice.com">http://ga.lgservice.com</a>
Gambia	<a href="http://gm.lgservice.com">http://gm.lgservice.com</a>
Ghana	<a href="http://gh.lgservice.com">http://gh.lgservice.com</a>
Guinea	<a href="http://gn.lgservice.com">http://gn.lgservice.com</a>
Ivory Coast	<a href="http://ic.lgservice.com">http://ic.lgservice.com</a>
Kenya	<a href="http://ke.lgservice.com">http://ke.lgservice.com</a>

Lesotho	<a href="http://www.lgservice.com">http://www.lgservice.com</a>
Liberia	<a href="http://lr.lgservice.com">http://lr.lgservice.com</a>
Libya	<a href="http://www.lgservice.com">http://www.lgservice.com</a>
Madagascar	<a href="http://mg.lgservice.com">http://mg.lgservice.com</a>
Mali	<a href="http://ml.lgservice.com">http://ml.lgservice.com</a>
Mauritius	<a href="http://mu.lgservice.com">http://mu.lgservice.com</a>
Morocco	<a href="http://ma.lgservice.com">http://ma.lgservice.com</a>
Namibia	<a href="http://www.lgservice.com">http://www.lgservice.com</a>
Nigeria	<a href="http://ng.lgservice.com">http://ng.lgservice.com</a>
Reunion	<a href="http://re.lgservice.com">http://re.lgservice.com</a>
Senegal	<a href="http://sn.lgservice.com">http://sn.lgservice.com</a>
South Africa	<a href="http://za.lgservice.com">http://za.lgservice.com</a>
Sudan	<a href="http://www.lgservice.com">http://www.lgservice.com</a>
Swaziland	<a href="http://www.lgservice.com">http://www.lgservice.com</a>
Togo	<a href="http://tg.lgservice.com">http://tg.lgservice.com</a>
Tunisia	<a href="http://tn.lgservice.com">http://tn.lgservice.com</a>
Zimbabwe	<a href="http://zw.lgservice.com">http://zw.lgservice.com</a>

## Middle East (Country/Region)

Afghanistan	<a href="http://www.lgservice.com">http://www.lgservice.com</a>
Bahrain	<a href="http://bh.lgservice.com">http://bh.lgservice.com</a>
Cyprus	<a href="http://cy.lgservice.com">http://cy.lgservice.com</a>
Iran	<a href="http://ir.lgservice.com">http://ir.lgservice.com</a>
Iraq	<a href="http://iq.lgservice.com">http://iq.lgservice.com</a>
Israel	<a href="http://www.lgservice.com">http://www.lgservice.com</a>
Jordan	<a href="http://jo.lgservice.com">http://jo.lgservice.com</a>
Kuwait	<a href="http://kw.lgservice.com">http://kw.lgservice.com</a>
Lebanon	<a href="http://lb.lgservice.com">http://lb.lgservice.com</a>
Oman	<a href="http://om.lgservice.com">http://om.lgservice.com</a>
Pakistan	<a href="http://pk.lgservice.com">http://pk.lgservice.com</a>
Qatar	<a href="http://qa.lgservice.com">http://qa.lgservice.com</a>
Saudi Arabia	<a href="http://sa.lgservice.com">http://sa.lgservice.com</a>
Syria	<a href="http://sy.lgservice.com">http://sy.lgservice.com</a>
Turkey	<a href="http://tr.lgservice.com">http://tr.lgservice.com</a>
U.A.E.	<a href="http://ae.lgservice.com">http://ae.lgservice.com</a>
Yemen	<a href="http://ye.lgservice.com">http://ye.lgservice.com</a>

## Central & South America (Country/Region)

Argentina	<a href="http://ar.lgservice.com">http://ar.lgservice.com</a>
Bolivia	<a href="http://www.lgservice.com">http://www.lgservice.com</a>
Brazil	<a href="http://br.lgservice.com">http://br.lgservice.com</a>

# LG Service Site

Caribbean	<a href="http://www.lgservice.com">http://www.lgservice.com</a>
Chile	<a href="http://cl.lgservice.com">http://cl.lgservice.com</a>
Colombia	<a href="http://co.lgservice.com">http://co.lgservice.com</a>
Costa Rica	<a href="http://cr.lgservice.com">http://cr.lgservice.com</a>
Cuba	<a href="http://www.lgservice.com">http://www.lgservice.com</a>
Dominican Republic	<a href="http://dm.lgservice.com">http://dm.lgservice.com</a>
Ecuador	<a href="http://ec.lgservice.com">http://ec.lgservice.com</a>
El Salvador	<a href="http://www.lgservice.com">http://www.lgservice.com</a>
Guatemala	<a href="http://www.lgservice.com">http://www.lgservice.com</a>
Honduras	<a href="http://www.lgservice.com">http://www.lgservice.com</a>
Nicaragua	<a href="http://www.lgservice.com">http://www.lgservice.com</a>
Panama	<a href="http://pa.lgservice.com">http://pa.lgservice.com</a>
Paraguay	<a href="http://www.lgservice.com">http://www.lgservice.com</a>
Peru	<a href="http://pe.lgservice.com">http://pe.lgservice.com</a>
Uruguay	<a href="http://www.lgservice.com">http://www.lgservice.com</a>
Venezuela	<a href="http://ve.lgservice.com">http://ve.lgservice.com</a>

## North America (Country/Region)

Canada	<a href="http://ca.lgservice.com">http://ca.lgservice.com</a>
Mexico	<a href="http://mx.lgservice.com">http://mx.lgservice.com</a>
Puerto Rico	<a href="http://www.lgservice.com">http://www.lgservice.com</a>
U.S.A.	<a href="http://www.lgusa.com">http://www.lgusa.com</a>

## Europe (Country/Region)

Albania	<a href="http://www.lgservice.com">http://www.lgservice.com</a>
Austria	<a href="http://www.lgservice.com">http://www.lgservice.com</a>
Belgium	<a href="http://be.lgservice.com">http://be.lgservice.com</a>
Bosnia-Herzegovina	<a href="http://www.lgservice.com">http://www.lgservice.com</a>
Bulgaria	<a href="http://bg.lgservice.com">http://bg.lgservice.com</a>
Byelorussia	<a href="http://www.lgservice.com">http://www.lgservice.com</a>
Croatia	<a href="http://www.lgservice.com">http://www.lgservice.com</a>
Czech Republic	<a href="http://cz.lgservice.com">http://cz.lgservice.com</a>
Denmark	<a href="http://dk.lgservice.com">http://dk.lgservice.com</a>
Estonia	<a href="http://ee.lgservice.com">http://ee.lgservice.com</a>
Finland	<a href="http://fi.lgservice.com">http://fi.lgservice.com</a>
France	<a href="http://fr.lgservice.com">http://fr.lgservice.com</a>
Germany	<a href="http://de.lgservice.com">http://de.lgservice.com</a>
Greece	<a href="http://gr.lgservice.com">http://gr.lgservice.com</a>
Hungary	<a href="http://hu.lgservice.com">http://hu.lgservice.com</a>
Iceland	<a href="http://is.lgservice.com">http://is.lgservice.com</a>
Ireland	<a href="http://ie.lgservice.com">http://ie.lgservice.com</a>
Italy	<a href="http://italy.lgservice.com">http://italy.lgservice.com</a>
Kazakhstan	<a href="http://kz.lgservice.com">http://kz.lgservice.com</a>

Latvia	<a href="http://lv.lgservice.com">http://lv.lgservice.com</a>
Lithuania	<a href="http://lt.lgservice.com">http://lt.lgservice.com</a>
Luxembourg	<a href="http://lu.lgservice.com">http://lu.lgservice.com</a>
Macedonia	<a href="http://www.lgservice.com">http://www.lgservice.com</a>
Moldova	<a href="http://www.lgservice.com">http://www.lgservice.com</a>
Netherlands	<a href="http://nl.lgservice.com">http://nl.lgservice.com</a>
Norway	<a href="http://no.lgservice.com">http://no.lgservice.com</a>
Poland	<a href="http://pl.lgservice.com">http://pl.lgservice.com</a>
Portugal	<a href="http://pt.lgservice.com">http://pt.lgservice.com</a>
Romania	<a href="http://ro.lgservice.com">http://ro.lgservice.com</a>
Russia	<a href="http://ru.lgservice.com">http://ru.lgservice.com</a>
Serbia	<a href="http://www.lgservice.com">http://www.lgservice.com</a>
Slovakia	<a href="http://www.lgservice.com">http://www.lgservice.com</a>
Slovenia	<a href="http://www.lgservice.com">http://www.lgservice.com</a>
Spain	<a href="http://es.lgservice.com">http://es.lgservice.com</a>
Sweden	<a href="http://se.lgservice.com">http://se.lgservice.com</a>
Switzerland	<a href="http://www.lgservice.com">http://www.lgservice.com</a>
Ukraine	<a href="http://ua.lgservice.com">http://ua.lgservice.com</a>
United Kingdom	<a href="http://gb.lgservice.com">http://gb.lgservice.com</a>

## Oceania (Country/Region)

Australia	<a href="http://au.lgservice.com">http://au.lgservice.com</a>
-----------	---

### **LG Electronics Inc.**

Home page : [www.lge.com.au](http://www.lge.com.au)  
 Service site : <http://au.lgservice.com>  
 Customer information centre  
 1800-LG-HELP(54-4357)

Fiji	<a href="http://www.lgservice.com">http://www.lgservice.com</a>
New Caledonia	<a href="http://www.lgservice.com">http://www.lgservice.com</a>
New Zealand	<a href="http://nz.lgservice.com">http://nz.lgservice.com</a>
Papua New Guinea	<a href="http://www.lgservice.com">http://www.lgservice.com</a>