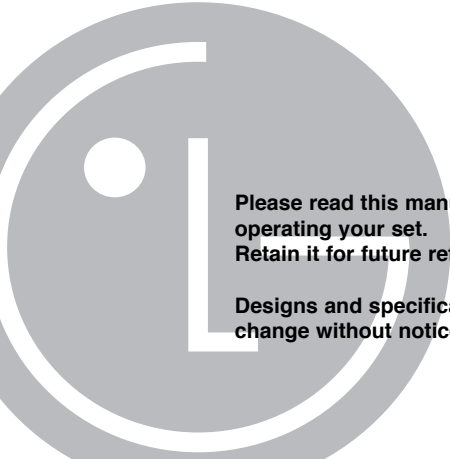




DIGITAL MUSIC PLAYER OWNER'S MANUAL

**MODEL: MF-FE501WF/WS/S/B/P/N
MF-FE502WF/WS/S/B/P/N
MF-FE505WF/WS/S/B/P/N
MF-FE509WF/WS/S/B/P/N**

A large, light gray watermark of the LG logo is positioned in the lower-left quadrant of the page, partially overlapping the text.

**Please read this manual carefully before
operating your set.
Retain it for future reference.**

**Designs and specifications are subject to
change without notice for improvement.**



Contents

Feature	3-4	Hold Function/ Adjust Volume	.. 43
Precautions	5-6	To play files/ To pause files	.. 44
Player features and controls	7-11	To skip the files/ To search the files	.. 45
Accessories	7	Using navigation	46
Front/ Left/ Right parts	8	To delete files on MP3 Player	.. 46
Up/ Down parts	9	Reset Function/ Book Mark Function	47
LCD (Music mode)	10	Local Repeat Function	48
LCD (FM radio mode)	11	Menu Operation	49-56
Installing Software	12-16	To select the menu	49
System requirements	12	To select the MUSIC or FM	
Installing MP3 Explorer	13-14	RADIO mode	50
Installing MediaSync Player	.. 15-16	EQUALIZER Function	51
Connections	17-20	REPEAT Function	52
Connecting the USB Cable	17	CONTRAST Function	52
Battery charging	18	BACKLIGHT Function	53
AC adapter charging	18	SCROLL Function	53
Disconnecting the USB Cable	19-20	LYRICS Function	54
Using the removable storage	.. 21	ID3 TAG Function	54
Downloading files	21	To select the menu language	.. 55
Using MP3 Explorer	22-42	To check memory and version	
Using MP3 Explorer	22-23	information/ EXIT	55
To download files	24-27	Select the record setting	56
To upload files	28-29	Radio Operation	57-59
To delete the files on MP3		Listening to the radio frequency	.. 57
Explorer	30-32	Preset mode or frequency mode	.. 58
To format memory	33-35	Presetting the radio frequency	.. 59
Firmware upgrade (OS update)	.. 36-38	Erasing a preset radio frequency	.. 59
To check version information	.. 39	Recording	60-62
MP3 Explorer update	40-41	Voice recording	60
To select MP3 Explorer menu		Auxiliary input recording	.. 61-62
language	42	FM radio recording	62
Basic Operation	43-48	Using PC Software	63-64
Power On/Off	43	Troubleshooting	65
Using the earphone	43	Specifications	66



Feature

Removable Storage Device

You can easily copy and paste files to the player using Windows Explorer

USB 2.0 Support

USB 2.0 transmits data with a speed of 480Mbps that is 40 times faster than USB1.1.

Direct MP3 Recording

You can convert music from CDs, cassettes and radio into MP3 files without a PC.

FM Reception

Listening to an FM program is made easy with Auto Search and Frequency.

Magnificent 3D sound-SRS, WOW

Experience the magnificent 3D and rich base sounds with the industry-recognized SRS WOW technology.

Upgrading Firmware

It can become the continuous improvement of the function and the various setting up this product.

MP3, WMA, OGG Playback

- MP3 is MPEG1 Layer3 audio format.
MP3 is a well known, high quality digital audio format.
MP3 files can be compressed up to 12 times the original wave file size.
- WMA (Windows Media Audio code) is the highest quality in terms of a sound and music. WMA provides all type of the best sounds from 8kHz to 48 kHz.

This product is manufactured to comply with the radio interference requirements of EEC DIRECTIVE 89/336/EEC, 93/68/EEC and 73/23/EEC.

Precautions



Never attempt to disjoin or repair the product yourself.



Never use the product for other purposes than those described in this guide.



Note that malfunctions may occur if you use the product in places where static electricity occurs frequently.



Avoid to leave the product in hot or humid place.



Take special attention when touching the product box, owners manual and accessories to avoid cuts.



If the product emits an unusual odor or excessive heat, or you notice anything else that seems unusual, do not use the product and contact our Customer Service Center.

Precautions



Pay attention to the USB cable direction when connecting the product to PC. The PC or the product may be damaged if you connect the USB cable in the wrong direction.

Never use damaged or worn USB cable.



Do not use the product near water. Do not touch this product with wet hands.



Be sure to back up your data files. The files on the player may be deleted while using the product. We are not responsible for any damaged or lost files that are not saved on your PC.

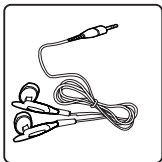
Customer Service Center does not back up your data while servicing.



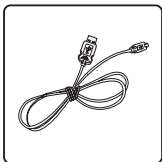
Avoid to use headphone or earphone while driving a vehicle, motorcycle, riding a bicycle, getting exercise or working in dangerous areas. Not only is it dangerous, but also illegal in some areas.

Player features and controls

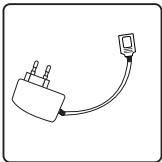
Accessories



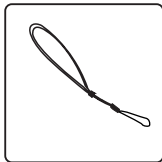
Earphone



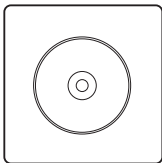
USB cable



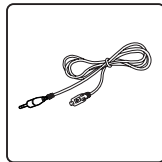
AC Adapter



Necklace



Installation CD

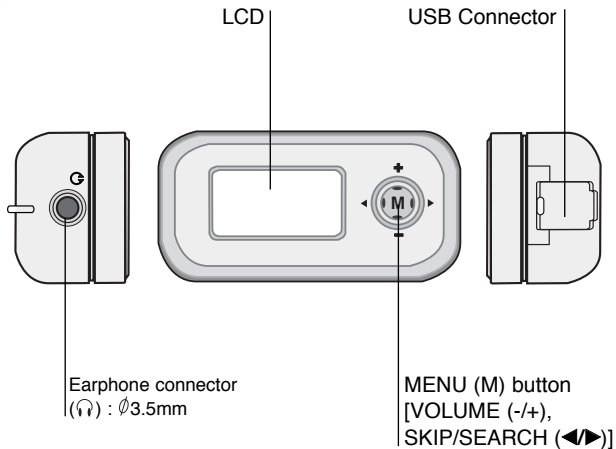


Auxiliary Input/ Output Cable

* Contents may be changed without notices.

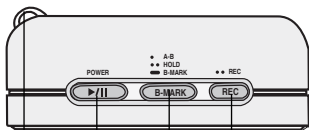
Player features and controls

Front/ Left/ Right parts



Player features and controls

Up/ Down parts

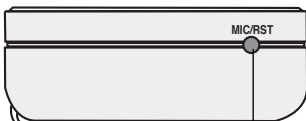


RECORD (REC) button

BOOK MARK (B-MARK) button
[HOLD, LOCAL REPEAT (A-B)]

PLAY/PAUSE (▶/||) button
(Power on/off)

Necklace connector

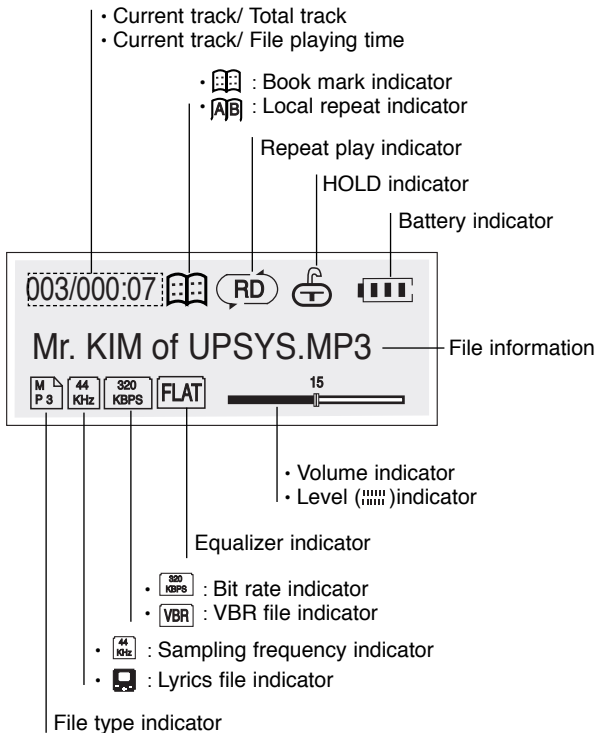


MICROPHONE(MIC)/RESET(RST)

Necklace connector

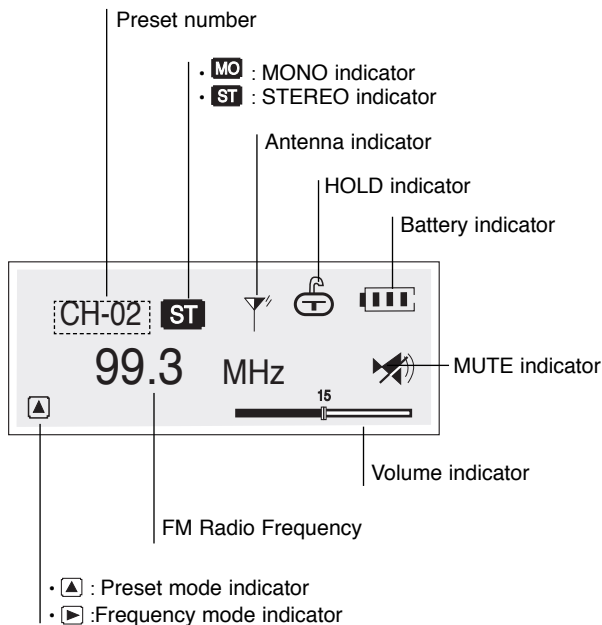
Player features and controls

LCD (Music mode)



Player features and controls

LCD (FM radio mode)



Installing Software

System requirements

Your MP3 Player needs the minimal system requirements for your computer.

- OS : Windows 98SE/ ME/ 2000/ XP
- CPU : At least Pentium - 133MHz
- Memory : At least 32MB
- HDD Space : At least 100MB
- Video Card : 640 x 480 Mode, At least High Color (16bit)
- USB Port
- CD-ROM Driver

You can update the MP3 Explorer software for Windows 98SE/ME/2000/XP available etc. from an internet website by LG Electronics Inc. Refer to the following sample contact procedure;

<http://www.lge.com> → SUPPORT → Select Your COUNTRY → Product Support → Device Driver

Notes

- Windows ME, Windows 2000 and Windows XP operating systems support USB 2.0 storage without additional setup. Windows Explorer may be employed to use the product as a portable storage device without installing any other information.
- In the Windows 98SE operating system however, the managing software is required to use the product as a portable storage device.
- When you install the supplied software CD, don't connect the supplied USB cable to a PC from your MP3 Player. After you install the software CD, connect the supplied USB cable to a PC from your MP3 Player.

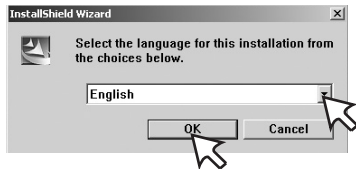
Installing Software

Installing MP3 Explorer

- 1 Insert the software CD into drive D:\ (CD ROM drive) and click “MF-FE500 Explorer”.



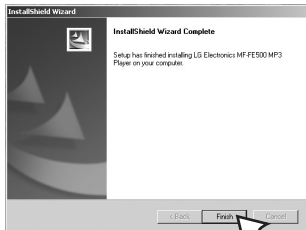
- 2 Select the language you want and Click “OK”.



- 3 Continue installation as directed in the dialog boxes.

Installing Software

- 4** Click the "Finish" button when the installation complete screen is displayed.



- 5** The "MP3 Explorer MF-FE500" icon is created on the Window desktop.

Installing Software

Installing MediaSync Player

- 1** Insert the software CD into drive D:\ (CD ROM drive) and click “MediaSync Player”.



- 2** Select the language you want and Click “OK”.



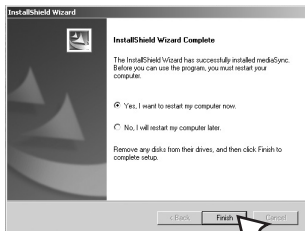
- 3** Continue installation as directed in the dialog boxes.

Installing Software

4 The “mediaSync” and “mediaSync Player Deluxe” icons are created on the Window desktop.

5 Click the "Finish" button when the installation complete screen is displayed.

You must reboot your computer to complete the installation.

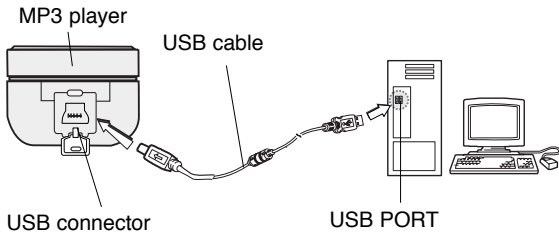


Connections

Connecting the USB Cable

To complete setup, you should connect the supplied USB cable to a PC from your MP3 Player.

- 1** Connect one end with the USB port on the back of your PC and then plug the other end into the USB connector of your MP3 Player.

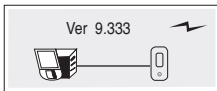


Compare the two ends of the cable.

- 2** The icon is displayed in the PC tray if successfully connected.



- 3** The following screen is displayed in the product LCD.



Connections

Battery charging

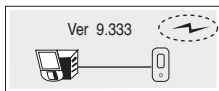
The player will be charged automatically when the USB cable is connected to the player.

Playtime is measured under playback of MP3 128Kbps, volume 20 and equalizer FLAT at full charge.

- Charging time : Approx. 2 hours (At full discharge)
- Playback time : Approx. 10 hours (At full charge)

Note

Confirm the battery charge on the units display window.

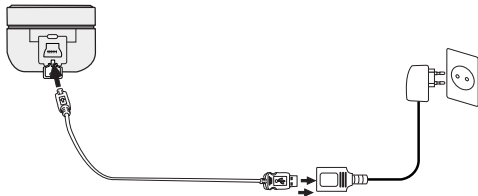


AC adapter charging

1 Use only the supplied AC adapter for safety.

This product is for both 100V and 220V.

2 Connect the adapter to the USB cable and then to the Main Power socket.



Connections

Disconnecting the USB Cable

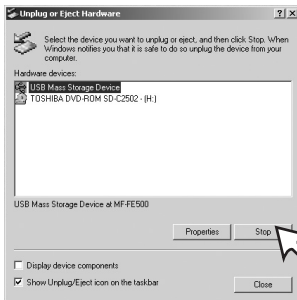
Wait until you get a message saying that you can safely unplug the device before disconnecting the USB cable.

- 1 The safe remove icon is in the system tray next to the clock. Click on the icon to eject the payer from the computer.**



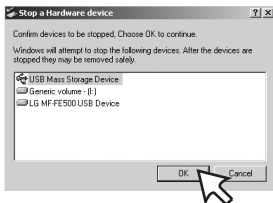
Double Click

- 2 Click “Stop”.**



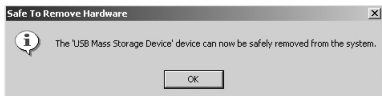
Connections

3 Click “OK”.



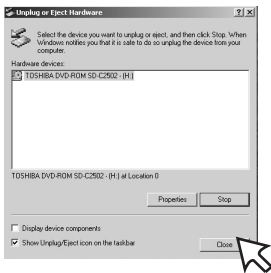
4 Click “OK”.

There will be a message indicating that it is now safe to disconnect the player.



5 Click “Close”.

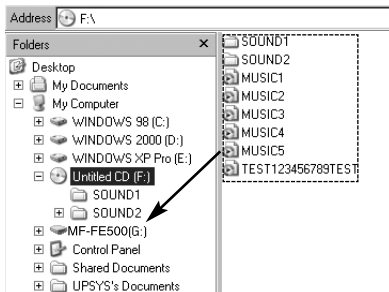
You can now go ahead and unplug the USB cable from the player.



Using the removable storage

Downloading files

- 1** Connect one end with the USB port on the back of your PC and then plug the other end into the USB connector of your MP3 Player.
- 2** Open Windows Explorer on PC.
Removable Disc is displayed in Window Explorer.
- 3** Select the file you want to save, then drag and drop it to the removable disk.
The saved files will be played in the order of file name as they appear. To change the order, change the name of files.



Note

Don't remove the USB cable while uploading or downloading a files.

Using MP3 Explorer

Using MP3 Explorer

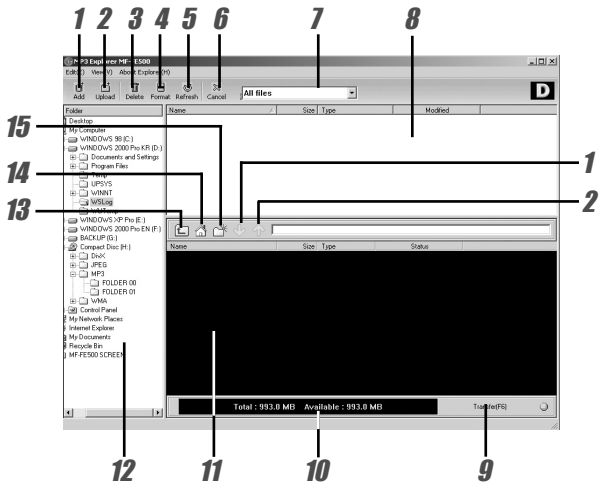
The MP3-Explorer is the software that interacts with the MP3 Player and a PC. MP3 files or any data files can be downloaded to the MP3 Player or vice versa.

Double-click the “**MP3 Explorer MF-FE500**” icon on the Windows desktop to open the MP3-Explorer program.

The following figure describes the MP3-Explorer program. The various features are explained below.

Note

Before you operate the MP3-Explorer, connect the USB cable to MP3 Player and PC.





Using MP3 Explorer

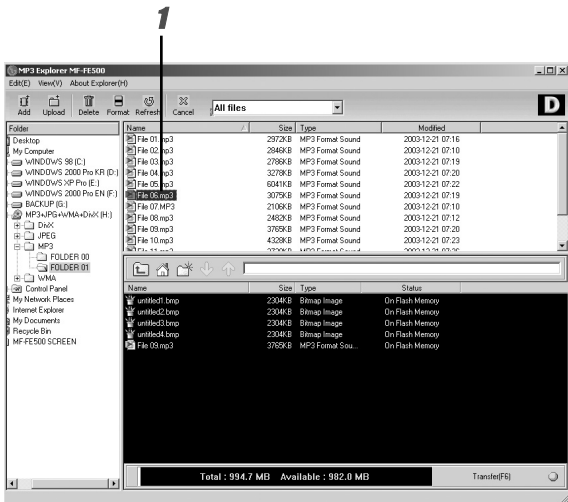
- 1** “Add” - Adds the file list window of MP3 Player to a downloading file.
- 2** “Upload” - This will allow you to copy the selected file on the MP3 Player.
- 3** “Delete” - Deletes the selected item.
(The files PC folder window are not deleted.)
- 4** “Format” - Deletes all files existing on the file list window of MP3 Player.
- 5** “Refresh” - Refreshes the contents of the current page.
- 6** “Cancel” - Cancel the selected item.
- 7** Displays the file types (All files, Audio files, Document files, Image files).
- 8** File list window of PC.
- 9** “Transfer(F6)” - Downloads the selected file on the PC onto the file list window of MP3 Player.
- 10** Displays the total and available space of the MP3 Player.
- 11** The file list window of MP3 Player.
- 12** PC folder window.
- 13** Moves to upper folder.
- 14** Moves to Root directory.
- 15** Creates a new folder in the the file list window of MP3 Player.

Using MP3 Explorer

To download files

Before downloading files to your MP3 Player and connect the MP3 Player to PC using the USB cable.

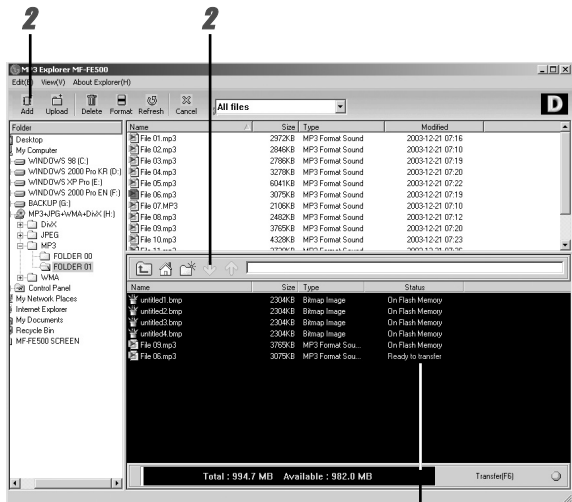
1 Select file(s) to download.



Using MP3 Explorer

2 Click the “Add” or “↓” icon.

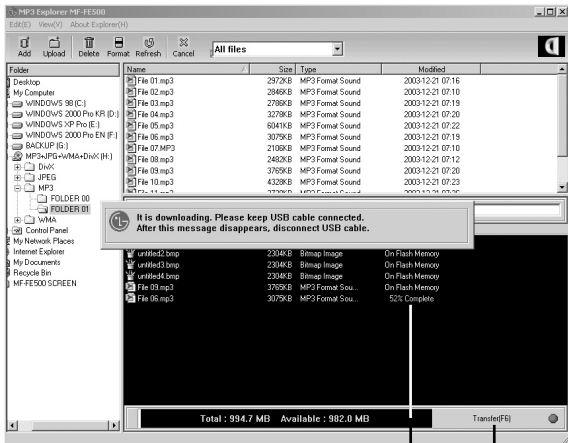
“Ready to transfer” appears.



Ready to transfer

Using MP3 Explorer

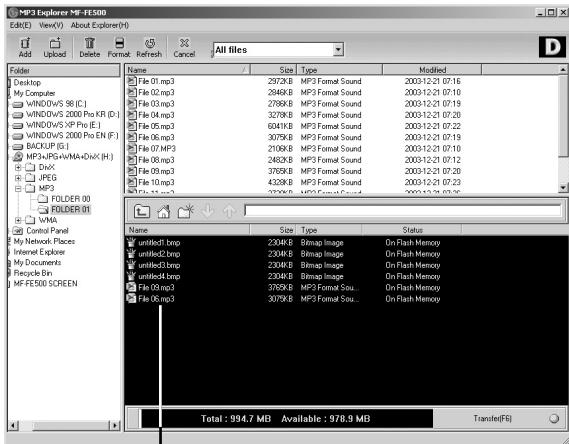
- 3 Click the “Transfer(F6)” icon.
- 4 The MP3 Player displays the process of file downloading.



Using MP3 Explorer

5 The selected file has been downloaded.

Now you can listen to music with the MP3 Player after removing the USB cable.




5

Notes

- Do not remove the USB cable while downloading files.
- Even if there is space in the MP3 player, some files may not download if the name is too long.

Using MP3 Explorer

To upload files

- 1 Select file(s) to upload.
- 2 Click the “Upload” or “

The screenshot shows the MP3 Explorer MF-FE500 interface. The left sidebar displays a folder tree with 'SCREEN' selected. The main pane shows a table of files on the 'SCREEN' device:

Name	Size	Type	Modified
SCREEN		File Folder	2005-01-24 18:22

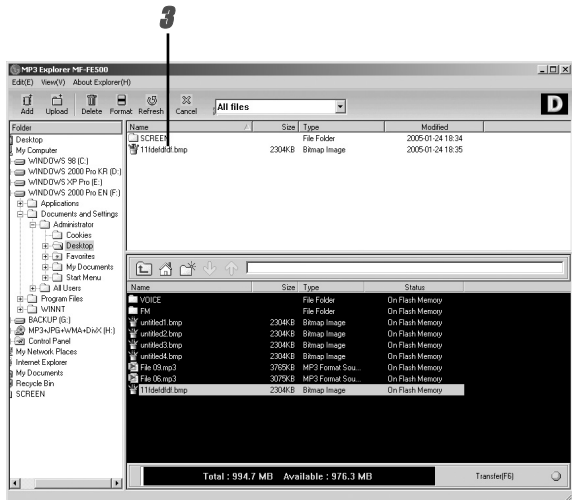
Below this, a second table shows files on a flash memory device:

Name	Size	Type	Status
VOICE		File Folder	On Flash Memory
FM		File Folder	On Flash Memory
untitled1.bmp	2304KB	Bitmap Image	On Flash Memory
untitled2.bmp	2304KB	Bitmap Image	On Flash Memory
untitled3.bmp	2304KB	Bitmap Image	On Flash Memory
untitled4.bmp	2304KB	Bitmap Image	On Flash Memory
File 03.mp3	3765KB	MP3 Format Sou...	On Flash Memory
File 05.mp3	3079KB	MP3 Format Sou...	On Flash Memory
1111deltd1.bmp	2304KB	Bitmap Image	On Flash Memory

At the bottom, a status bar shows: Total : 994.7 MB Available : 976.3 MB Transfer(F6). The 'Upload' button and the 'upload icon' are both labeled with the number '2'. The 'SCREEN' folder in the left sidebar is labeled with the number '1'.

Using MP3 Explorer

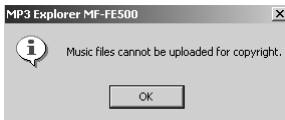
3 The selected file has been uploaded.



Note

MP3 and WMA files are not available to upload.

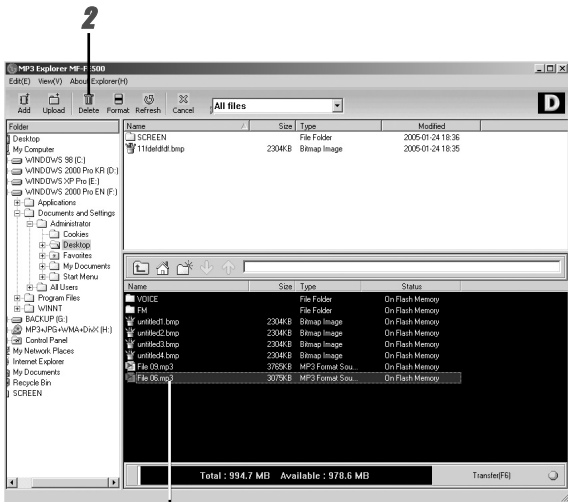
But, you can upload the MP3 files recorded using MP3 player.



Using MP3 Explorer

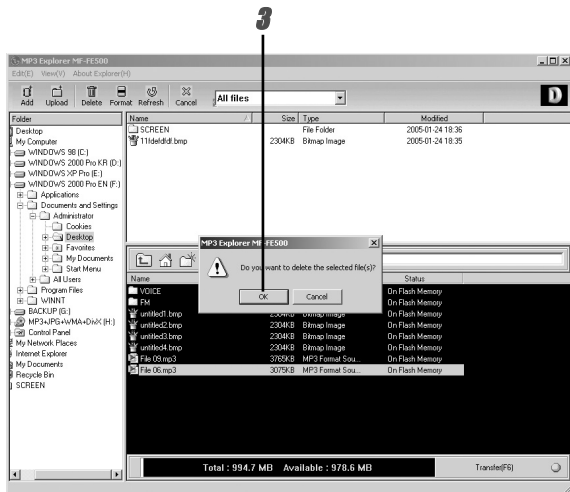
To delete the files on MP3 Explorer

- 1 Select the file(s) to delete.
- 2 Click the “Delete” icon.



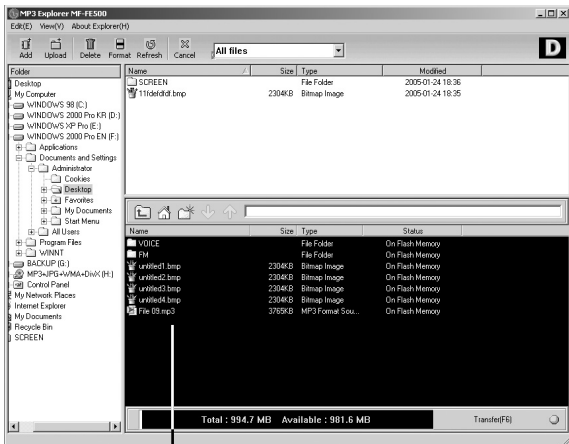
Using MP3 Explorer

3 Click "OK".



Using MP3 Explorer

4 The selected file has been deleted.

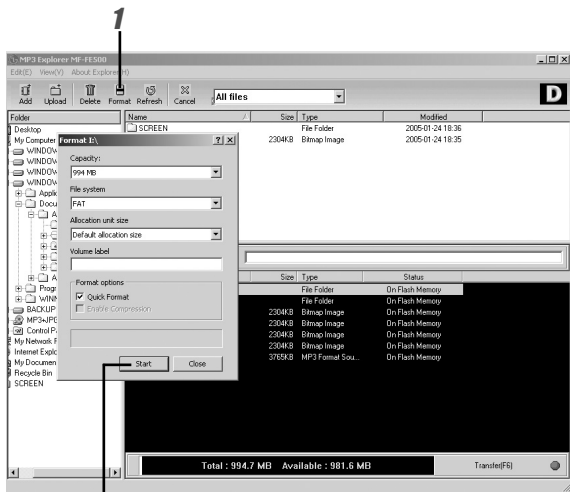


Using MP3 Explorer

To format memory

This function deletes all files existing on the file list window of MP3 Player.

- 1 Click “Format” icon.
- 2 Click “Start” icon.



Using MP3 Explorer

3 Click “OK” icon.

The MP3 Player displays the process of file formatting.

4 Click “OK” icon.



Using MP3 Explorer

5 Click “Close” icon.

6 All file is deleted.



Notes

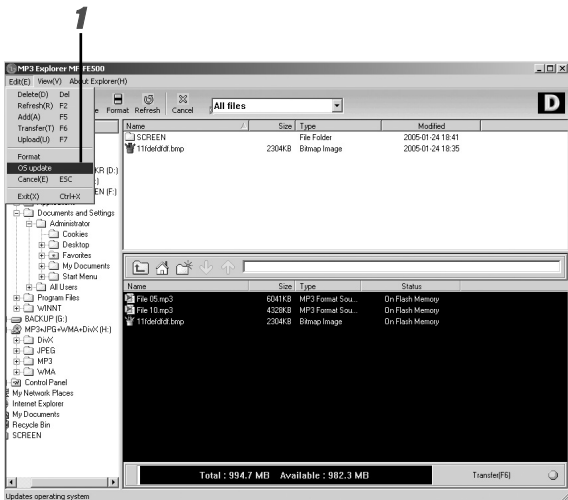
- Before formatting the internal memory, connect the USB cable to MP3 Player and PC.
- Don't remove the USB cable while formatting or downloading a files.

Using MP3 Explorer

Firmware upgrade (OS update)

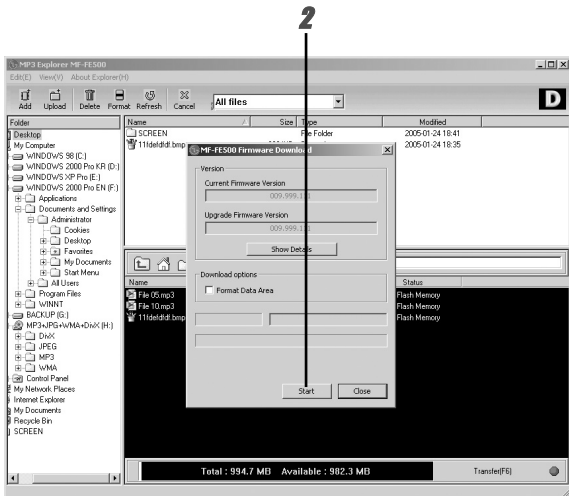
This function shows how to upgrade to the new version.

1 Click “Edit” → “OS update”.



Using MP3 Explorer

2 Click "Start".



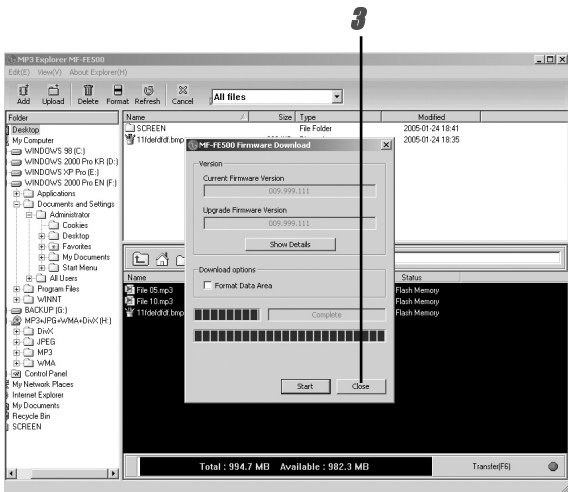
Notes

- If you check "Format Data Area" option, all the data stored in the flash memory is deleted.
- Firmware upgrade can only be possible when "Format Data Area" is checked.

Using MP3 Explorer

3 Click “Close”.

The MP3 Player is upgraded to the new version.



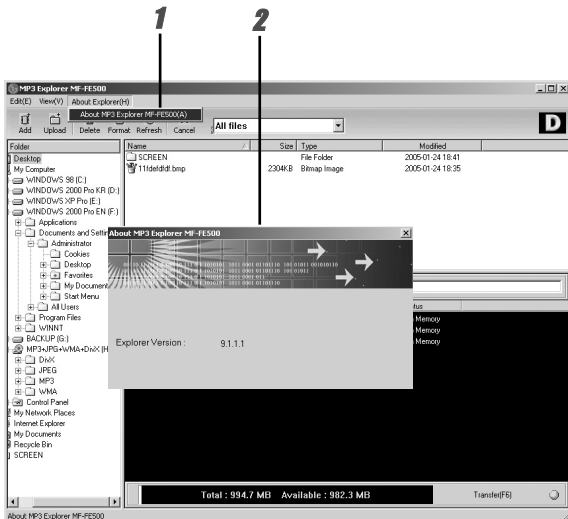
Using MP3 Explorer

To check version information

You can check OS version and Explorer version information.

1 Click “About Explorer” → “About MP3 Explorer MF-FE500”.

2 The Explorer Version will be shown on the screen.



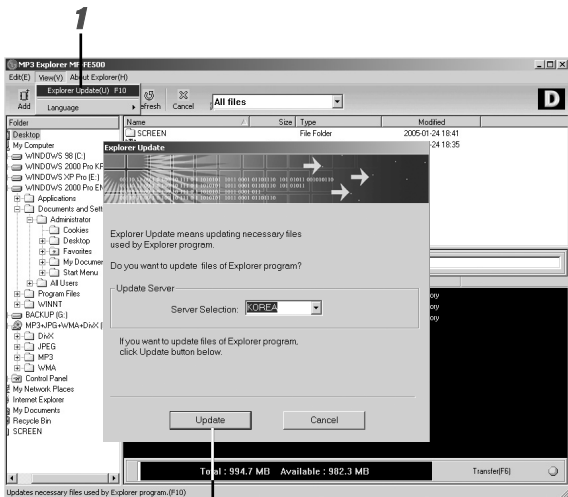
Using MP3 Explorer

MP3 Explorer update

It means updating necessary files used by Explorer program.

1 Click “View” → “Explorer Update”.

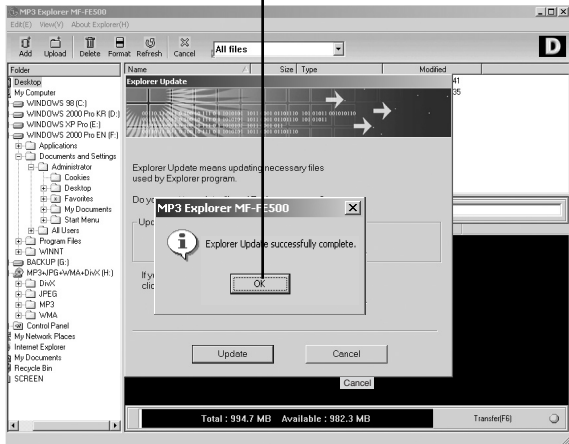
2 Click “Update”.



Using MP3 Explorer

3 Click "OK".

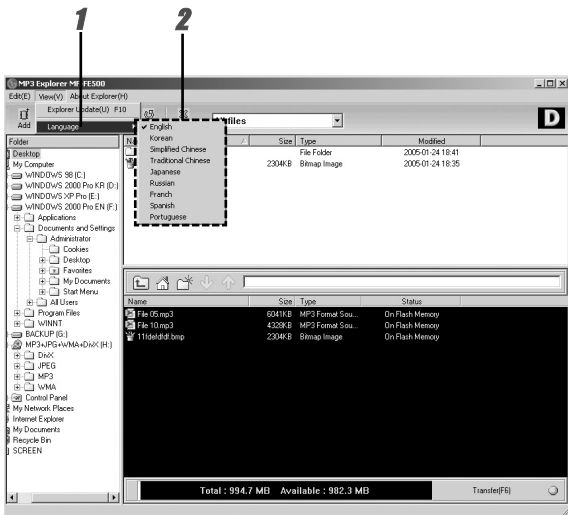
3



Using MP3 Explorer

To select MP3 Explorer menu language

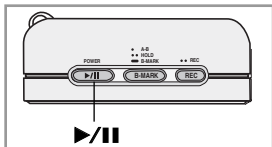
- 1 Click “View” → “Language”.
- 2 Select the menu language by moving the mouse.



Basic Operation

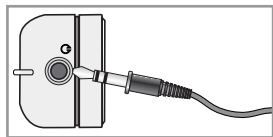
Power On/Off

- To turn on, press the ►/|| button.
- To turn off, press the ►/|| button for more than 2 seconds.



Using the earphone

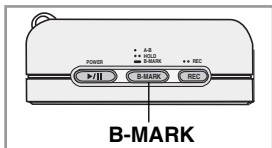
Connect the earphone to earphone connector.



Hold Function

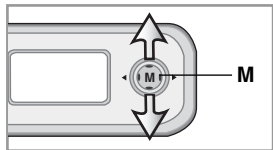
This function locks the main unit to prevent it from operating when you accidentally press a button.

- Press the **B-MARK** twice briefly.
- To cancel it, press the **B-MARK** twice briefly again.



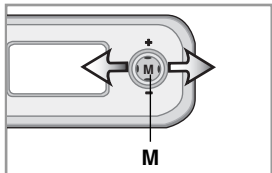
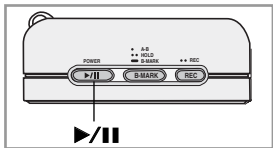
Adjust volume

You can adjust the volume by pressing the **M** button up (+) or down (-).



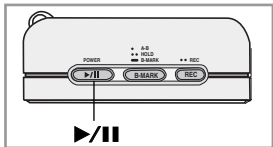
Basic Operation

To play files



- 1** Press ▶/|| button to turn on.
- 2** Press the **M** button to the left (◀) or right (▶) to select a file you want.
- 3** Press ▶/|| button to play a file.

To pause files

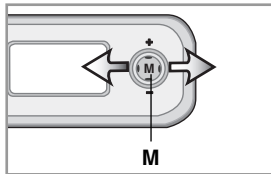


Press ▶/|| button briefly during file playback.

The playing time blinks in the LCD. To resume playback, press this button again.

Basic Operation

To skip the files



To skip the next file

Press the **M** button to the right (▶) to select the next file.

To skip the previous file

Press the **M** button to the left (◀) within 5 seconds of playing time.

To return the beginning of the current file

Press the **M** button to the left (◀) after 5 seconds of playing time.

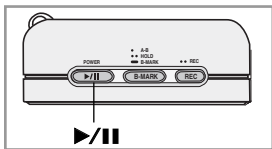
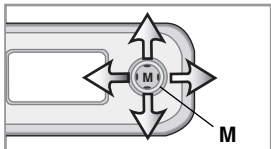
To Search the files

Press the **M** button to the left (◀) or right (▶) for more than 2 seconds during file playing.

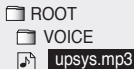
Basic Operation

Using navigation

This function searches and plays a file you want on pause or playback mode.



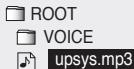
- 1 Press the **M** button to play a file.
The navigation is appeared in the LCD.



- 2 Press the **M** button up (+) or down (-) to select a file you want and then press the **M** or **▶/||** button.
The selected file will be played.

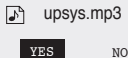
To delete files on MP3 Player

- 1 Press the **M** button on pause mode.
The navigation is appeared in the LCD.



- 2 Select a file you want to delete pressing the **M** button up (+) or down (-) and press the **REC** button.

- 3 Select "YES" pressing the **M** button to the left (◀) or right (▶) and then press the **M** button.

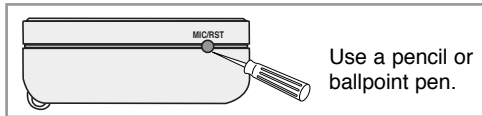


Basic Operation

Reset function

This function is used to solve the problem as following symptom.

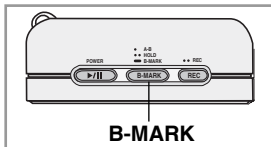
- When the LCD does not display.
- When the MP3 player does not operate normally.





Book Mark Function

If you set Book Mark function during file playing, you can search the setting point of the track automatically.

(The Book Mark function is not available on the FM radio mode.)

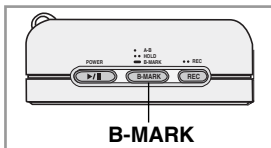


- 1** Select the setting point you want during file playing, press and hold the **B-MARK** button for about 2 seconds.
“” appears in the LCD.
- 2** Press **B-MARK** button briefly once during other file playing.
Automatically, the player searches and plays from the setting point.
- 3** To cancel Book Mark function, press the **B-MARK** button for about 2 seconds.
“” disappears in the LCD.

Basic Operation

Local Repeat Function

You can set local repeat by pressing **B-MARK** button. If you select local repeat ending point within 3 seconds, after setting the local repeat starting point, it may not be operated.



- 1** To select the local repeat starting point you want during file playing, press the **B-MARK** button briefly once.
“**A**” appears in the LCD.
- 2** To select the local repeat ending point you want during file playing, press the **B-MARK** button again.
“**A|B**” appears in the LCD.
- 3** To cancel local repeat function, press the **B-MARK** button.
“**A|B**” disappears in the LCD.

ote

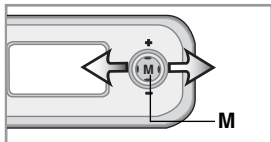
The Local Repeat function is not available to the FM radio mode.

Menu Operation

To select the menu

You can choose the 12 fixed menu mode. (FM RADIO or MUSIC, EQUALIZER, REPEAT, CONTRAST, BACKLIGHT, SCROLL, LYRICS, ID3 TAG, LANGUAGE, RECORD, INFORMATION, EXIT)

- See pages 50 to 55.



- 1** Press the **M** button for about 2 seconds.
The menu appears.
- 2** Press the **M** button to the left (◀) or right (▶) to select the desired menu.
- 3** Press the **M** button to move to the second level.
- 4** Press the **M** button to the left (◀) or right (▶) to select the second desired menu.
- 5** Press the **M** button to confirm your selection.
Some items require additional steps.
- 6** To cancel the menu mode, press the **M** button for about 2 seconds.

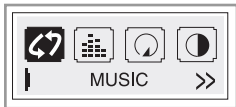
Note

If you don't press any buttons within about 7 seconds in the menu, it will return to the previous screen.

Menu Operation

To select the MUSIC or FM RADIO mode

- 1** Press the **M** button for about 2 seconds.
The MUSIC mode menu appears.



- 2** Press the **M** button.
The MUSIC mode is selected.
- 3** Press the **M** button for about 2 seconds on the music mode.
The FM RADIO mode menu appears.

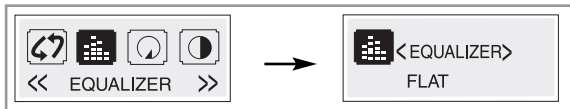


- 4** Press the **M** button.
The FM RADIO mode is selected.
- 5** Repeat 1-4 steps.

Menu Operation


EQUALIZER Function

You can choose between 8 fixed sound mode.
(See page 49.)



- “FLAT” : Standard and natural sound.
- “X-LIVE” : Powerful realism with strong sound quality.
- “POP” : Optimized for R&B, soul and country music.
- “CLASSIC” : Optimized for orchestral music.
- “JAZZ” : Sweet sound with soft feeling.
- “ROCK” : Tender sound with powerful feeling.
- “USEREQ” : Use the menu to set the sound type you want.
 - Adjust : Press the **M** button up (+), down (-), left (◀) and right (▶).
 - Select : Press the **M** button.
- SRS : Enjoy the 3D sound effect.
- TRUBASS : Improve the bass sound to make spectacular.
- WOW : Enjoy the SRS and TruBass simultaneously.

Notes

- The Equalizer Function is not available to the FM radio mode.
-  is a trademark of the SRS Labs, Inc.
- WOW technology is incorporated under license of the SRS Labs, Inc.

Menu Operation

REPEAT Function

You can choose between 7 fixed repeat mode. (See page 49.)



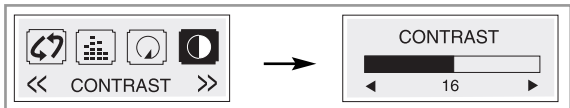
MODE	LCD	DESCRIPTION
Repeat Single		Plays repeatedly the current selected file.
Folder		Plays files within folder.
Repeat Folder		Plays files repeatedly within folder.
Random Repeat Folder		Plays files randomly within folder.
All		Plays all file.
Repeat All		Plays repeatedly all file.
Random Repeat All		Plays all file repeatedly in random order.

Note

The REPEAT function is not available to the FM radio mode.

CONTRAST Function

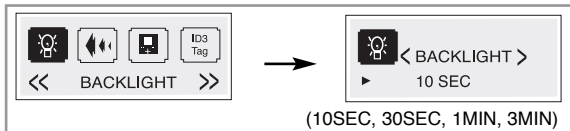
This function can adjust lightening or darkening the LCD. (See page 49.)



Menu Operation

BACKLIGHT Function

- Whenever any button is pressed, the LCD becomes bright.
- This function can set time of brightness displayed in the LCD. (See page 49.)

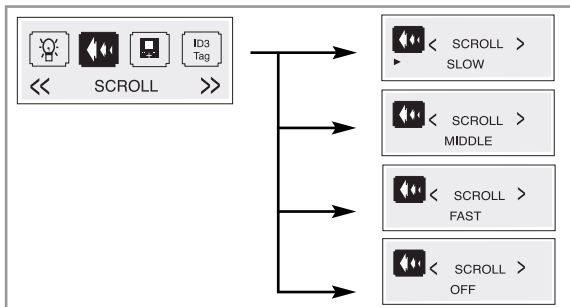


- If you don't set it, select the "OFF".



SCROLL Function

This function adjusts the speed of the file information which passed by the LCD. (See page 49.)



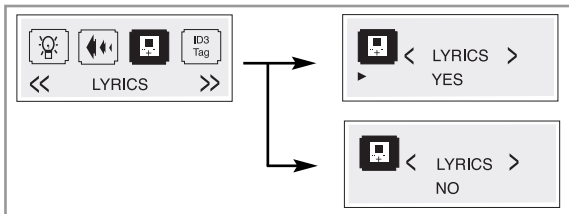
Note

The SCROLL function is not available to the FM radio mode.

Menu Operation

LYRICS Function

If there is a lyrics information of MP3 file, it will be shown in the LCD. (See page 49.)



Note

- If there is no a lyrics information of MP3 file, the file name will only be shown in the LCD.
- The LYRICS function is not available to the FM radio mode.

ID3 TAG Function

If there is a ID3 TAG information of MP3 file, it will be shown in the LCD. (See page 49.)



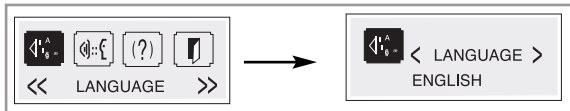
Note

The ID3 TAG function is not available to the FM radio mode.

Menu Operation

To select the menu language

You can select the menu language. (See page 49.)



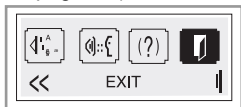
To check memory and version information

You can check the memory and version information.
(See page 49.)



EXIT

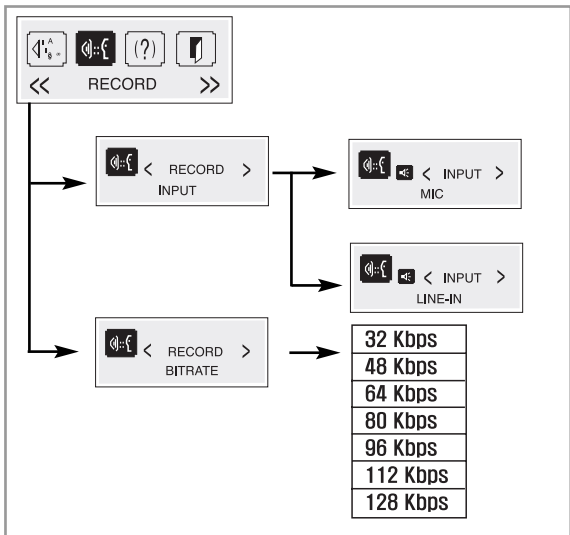
To move to previous menu, select the “EXIT” menu.
(See page 49.)



Menu Operation

Select the record setting

When you record on the MP3 player, select the record setting.
(See page 49.)

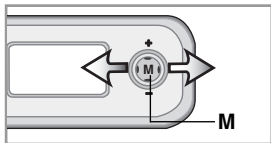


Notes

- A higher Bit Rate increases the quality but reduces recording time.
- Saved within each folder in case of VOICE, LINE and FM recording.

Radio Operation

Listening to the radio frequency



- 1 Press the **M** button for about 2 seconds during pause or playing a file of music mode.
The FM RADIO menu will be shown in the LCD.



- 2 Press the **M** button.
- 3 Press the **M** button to the left (◀) or right (▶) to select the radio frequency.

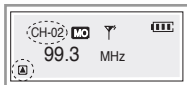
Notes

- If you listen to FM radio, insert the earphone into earphone jack. The earphone plays the part of the antenna.
- If you press the ▶/|| button during FM radio receiving, the sound is muted.

Radio Operation

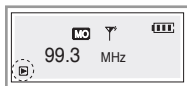
Preset mode or frequency mode

If you press the **B-MARK** button repeatedly during FM radio receiving, you can select the preset mode or frequency mode.



- **Preset mode (A)**

- Selects the frequency channel.
- Press the **M** button to the left (◀) or right (▶).



- **Frequency mode (B)**

- Manual Tuning
Press the **M** button to the left (◀) or right (▶).
- Automatic Tuning
Press the **M** button to the left (◀) or right (▶) for about 2 seconds.

Radio Operation

Presetting the radio frequency

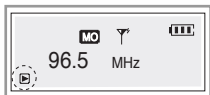
Auto memory

All available radio stations with sufficient signal strength will be stored automatically.

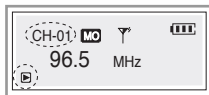
- Press the **REC** button for about 2 seconds during FM radio receiving.

Preset memory

- 1 Select the frequency you want and then press the **B-MARK** button for about 2 seconds on the frequency mode.



Frequency mode



Channel 01 : 96.5 MHz

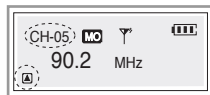
- 2 Press the **B-MARK** button.

- 3 Repeat steps 1 to 2 to store other frequency.

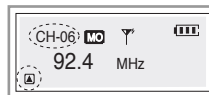
The frequency can be stored up to the 20 channel.

Erasing a radio frequency

- 1 Select the frequency you want and then press the **B-MARK** button for about 2 seconds on the preset mode.



Channel 05 : Deleting



Channel 06 : Display

Recording

Voice recording

- 1 Select the “RECORD” → “INPUT” → “MIC” .

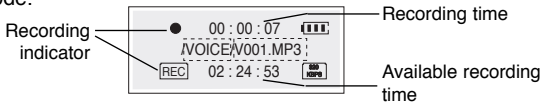


- 2 Select the BITRATE you want.



The recording setting is completed.

- 3 Press the **REC** button twice briefly during pause of music mode.



- 4 Start the voice recording to the Microphone (MIC) on the main unit.

- 5 To pause the recording, press **REC** button. (●||)

- 6 To continue the recording, press **REC** button again.

- 7 To stop the recording, press ►/|| button.

The voice recording is completed.

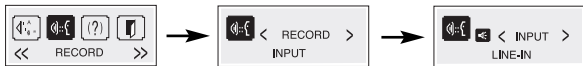
Note

The recorded files are stored V001.MP3, V002.MP3, V003.MP3.... in order within VOICE folder.

Recording

Auxiliary input recording

- 1 Select the “RECORD” → “INPUT” → “LINE-IN” .

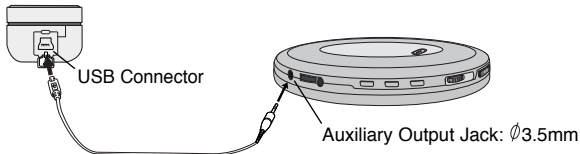


- 2 Select the BITRATE you want.



The recording setting is completed.

- 3 Connect the auxiliary Input/Output cable to the USB Connector and the auxiliary output jack on the auxiliary main unit.



- 4 Press **REC** button twice briefly on pause mode and start playing the auxiliary main unit.
The auxiliary Input recording is started.

Recording

5 To pause the recording, press **REC** button. (●||)

6 To continue the recording, press **REC** button again.

7 To stop the recording, press ►/|| button.

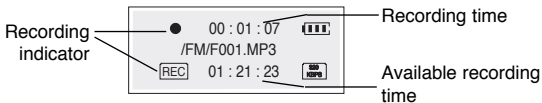
The auxiliary Input recording is completed.

Note

The recorded files are stored E001.MP3, E002.MP3, E003.MP3.... in order within LINE folder.

FM radio recording

1 Press the **REC** button twice briefly during FM radio receiving.



2 To pause the recording, press **REC** button. (●||)

3 To continue the recording, press **REC** button again.

4 To stop the recording, press ►/|| button.

The FM radio recording is completed.

Note

The recorded files are stored F001.MP3, F002.MP3, F003.MP3.... in order within FM folder.

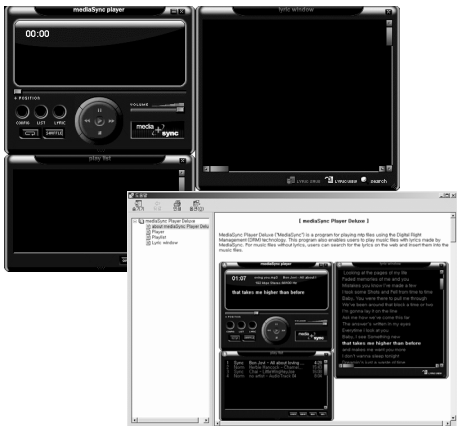
Using PC Software

MediaSync

MediaSync Player Deluxe ("MediaSync") is a program for playing mtp files using the Digital Right Management (DRM) technology.

This program also enables users to play music files with lyrics made by MediaSync. For music files without lyrics, users can search for the lyrics on the web and insert them into the music files.

- **Run MediaSync Player Deluxe and press F1. Help will appear.**



Using PC Software

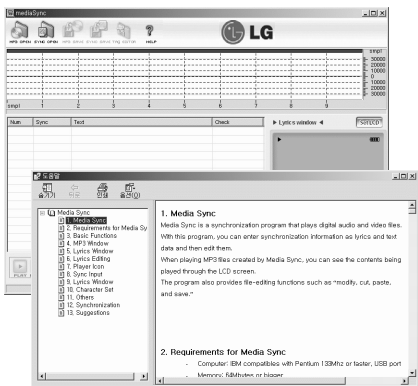
MediaSync Player Deluxe

MediaSync is a synchronization program that plays digital audio and video files. With this program, you can enter synchronization information as lyrics and text data and then edit them.

When playing MP3 files created by MediaSync, you can see the contents being played through the LCD screen.

The program also provides file-editing functions such as "modify, cut, paste, and save."

- **Run MediaSync Player Deluxe and press F1. Help will appear.**





Troubleshooting

- 1. The MP3 Player does not work or nothing is displayed in the LCD.**
 - Check the capacity of the memory.
- 2. The buttons are not working.**
 - Check if the Hold Switch is on.
- 3. The files can not be downloaded.**
 - Check the connection between the USB port of your PC and the USB cable.
 - Format the MP3 Player.
- 4. Heavy noise in radio reception .**
 - See if earphones are connected. The earphones is an antenna for radio reception.
 - If the earphones are connected, try moving direction of the product and earphones.
- 5. LCD screen is too dark.**
 - Check the brightness setting of the LCD screen.

Specifications

General section

Memory Capacity	MF-FE501WF/WS/B/P/N : 128 MB MF-FE502WF/WS/B/P/N : 256 MB MF-FE505WF/WS/B/P/N : 512 MB MF-FE509WF/WS/B/P/N : 1 GB
Dimensions (WxHxD)	50x25x18mm
Weight	30g
Dynamic Range	55/90dB (No Filter/22kHz LPF)
Channel Separation	40/40dB (1kHz/10kHz)
Output Power	9mW+9mW (1kHz,0dB/16Ω)
Equalizer	FLAT/X-LIVE/POP/CLASSIC/JAZZ/ ROCK/USEREQ/TRUBASS/WOW
Supported File	MP3 (MPEG1/2/2.5 Layer3), WMA (32-192kbps, 8KHz-48KHz), OGG (Q9)

FM radio section

Frequency Range	87.5-108.0 MHz
S/N Ratio	40 dB
Channel Separation	25 dB
Antenna	Earphone Antenna

Recording Available hour

MEMORY \ BITRATE	128MB	256MB	512MB	1GB
32 Kbps	8 hours	17 hours	34 hours	69 hours
48 Kbps	5 hours	10 hours	24 hours	46 hours
64 Kbps	4 hours	8 hours	17 hours	34 hours
80 Kbps	3 hours	6 hours	13 hours	27 hours
96 Kbps	2 hours	5 hours	11 hours	23 hours
112 Kbps	2 hours	4 hours	9 hours	19 hours
128 Kbps	2 hours	4 hours	8 hours	17 hours



P/NO:3834RL0013K