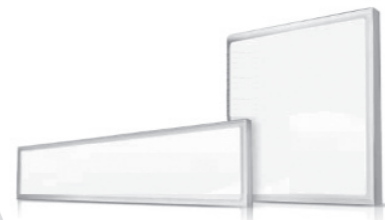


LED FLAT LIGHT

53W/60W

User Manual



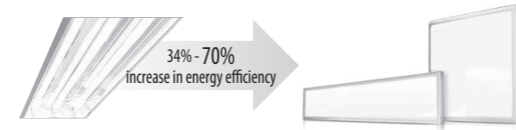
- Please read the 「Safety Precautions」 prior to use for your safety.
- This manual is intended to prevent product damage and protect the user's safety.
- Place the manual at a place where it can be easily located by all potential users.

LED FLAT LIGHT

LED FLAT LIGHT is a product with enhanced efficiency and user convenience achieved through its energy management and control technology and ultra-thin design. It is high-efficiency lighting capable of replacing existing lighting devices such as fluorescent lamps, etc.

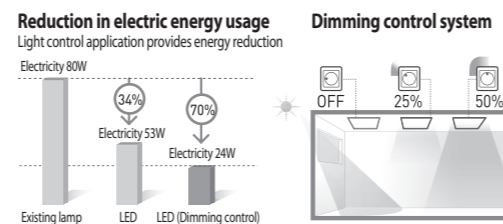
Advantages

- High efficiency reduces energy costs**
Replacing existing lighting devices with the LED FLAT LIGHT can reduce energy costs by 30% or more.



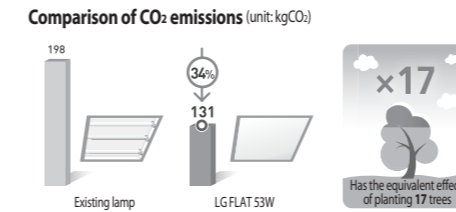
※ LG's test standards

- Dimming control provides additional energy reduction costs**
Dimming control utilizing an illumination intensity sensor reduces electricity usage, thereby providing approximately 70% energy reduction.



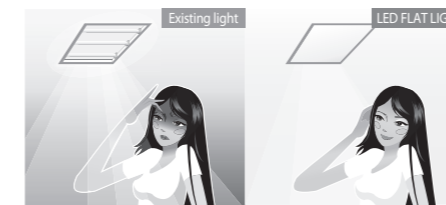
※ This function is provided as an optional part. There may be differences depending on the conditions of use.

- Low carbon emissions allows environmentally-friendly lighting**
Product is mercury-free, presenting no harm to the environment or human body. Its annual CO₂ emissions have been dramatically reduced, making it an environment-friendly product.



※ If used 12 hours each day for a year
※ Conversion constant 0.573 kgCO₂/Kwh, 3.86kgCO₂/tree

- Natural light prevents glare**
It provides the lowest and best glare level in the industry by producing pleasant, healthy, and natural light without the use of a louver.



- Long life expectancy provides low maintenance cost**
If used for 12 hours a day, the product can be used for 10 or more years without replacement. Thus, maintenance costs are low, making it an economically sound option.

Safety Precautions

- ▶ The meanings of the signs displayed on the product and user manual are as follows:
 - This sign means use caution for dangerous items and operations. For parts with this sign, user must read the manual carefully and follow instructions in order to avoid risks.
 - This sign is for displaying risks involving electric shock under certain conditions.

- WARNING** • Violation of warnings may lead to serious injury or death.
- CAUTION** • Violation of precautions may lead to light injury or product damage.

- WARNING**
 - Product is heavy. Use a trolley when transporting the product.**
 - Dropping the product may cause product damage and malfunction.
 - Use with proper rated voltage.**
 - Risk of fire and product damage.
 - Do not install product in places exposed to dampness.**
 - Risk of fire.
 - Install a circuit breaker.**
 - Risk of fire and electric shock.
 - Do not install in areas that have risks of flooding.**
 - Risk of electric shock.
 - Perform grounding work.**
 - Risk of electric shock.
 - Do not install on un-leveled ceilings.**
 - Risk of product falling, which may lead to product damage and injury to the user.
 - Electric work must be performed by a certified technician according to the installation manual.**
 - Inadequate power capacity and faulty electric work may lead to fire or electric shock.

WARNING

- Turn power off before installation.**
 - Risk of electric shock.
- Do not randomly connect the power polarities.**
 - Risk of product damage and accidents.
- Do not store in a humid area.**
 - Risk of product malfunctioning.
- Must use woodscrews provided by LG Electronics during installation.**
 - Risk of product falling and injury to user.
- Do not install near potential sources of fire or inflammable objects, such as paper or cloth.**
 - Risk of product malfunctioning and accidents.
- Do not use the product if impurities are present in the product or if the product is submerged.**
 - Risk of accidents such as electric shock and product damage.
- Must fix the product properly on the ceiling.**
 - Risk of product dropping and causing injury to the user.
- Must have at least two or more people working during installation.**
 - Risk of product dropping and causing injury to the user.
- Do not disassemble or arbitrarily remodel the product. Do not use for underwater lighting purposes. (Underwater landscape, searchlight, fishing, events, etc.)**
 - Risk of fire and electric shocks.
- If the lamp turns off by itself, do not disassemble the product. Contact your local LGE sales representative for repair.**
 - Risk of electric shock and product malfunctioning.

WARNING

- Do not stare directly at the lamp when turned on.**
 - Strong light may cause visual impairment.
- Do not expose the product to water when cleaning it.**
 - Risk of fire and electric shock.
- Do not use for purposes other than lighting.**
 - (Heating food, drying clothes, etc.)
 - Risk of fire.
- Never disassemble the product.**
 - Risk of accidents such as electric shock and product damage.
- Do not use if the product has been dropped or exposed to shock.**
 - Risk of product malfunctioning.

If the external flexible cable or cord of this Luminaire is damaged, it shall be exclusively replaced by the manufacturer or his service agent or a similar qualified person in order to avoid a hazard.

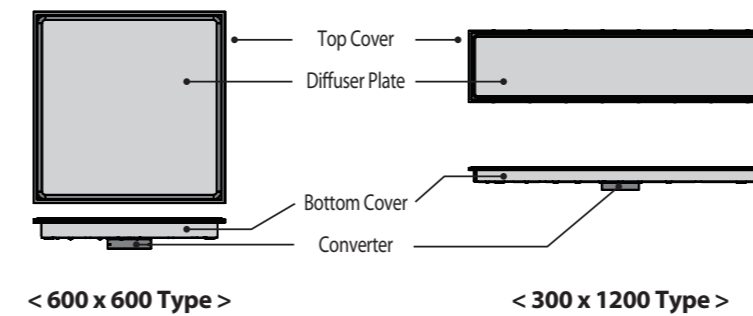
CAUTION

- Do not install where it may be exposed to direct sunlight, humidity, or dust.**
- Do not clean the product with inflammable substances such as alcohol, benzene, and acetone that may alter the surface.**

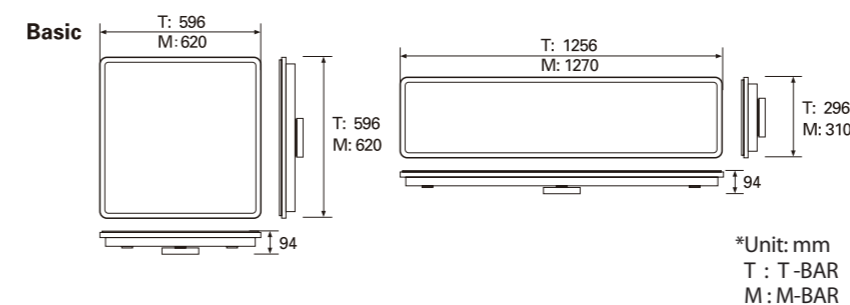
Product Configuration and Size

1. Product Configuration

LED FLAT LIGHT is a product with enhanced efficiency and user convenience achieved through its energy management and control technology and ultra-thin design. It is high-efficiency lighting capable of replacing existing lighting devices such as fluorescent lamps, etc.



2. Product Size



Installation

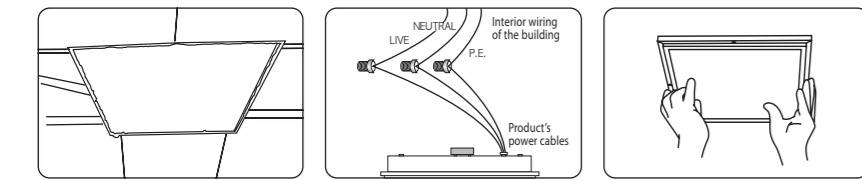
1. T-BAR

- Make sure to turn off the main power switch of the installation space before connection.
- Connect so that the colors of the 3 power cables match. (LIVE: BROWN, NEUTRAL: BLUE, P.E.: GREEN/YELLOW)

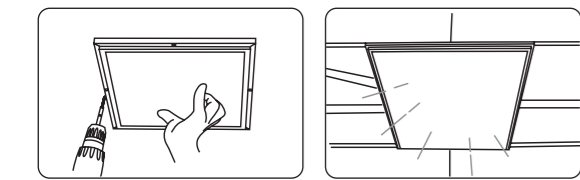
- Drill and prepare the ceiling so the hole is smaller than the product.
- Connect the 3 product cables to the interior wiring of the building. For finishing cap, use standardized products.
- Rotate the connected product by 20 degrees. Then insert it into the T-bar insertion space.
 - Make sure that all 4 sides of the product match the T-bar.
- Place the horizontal product into the T-bar.
- Ensure the inserted product is horizontal.
- Once installation is complete, turn on the power switch to check it is operating properly.
 - After the installation is complete, remove the protective sheet.

2. M-BAR

- Make sure to turn off the main power switch of the installation space before connection.
- Connect so that the colors of the 3 power cables match.
(LIVE: BROWN, NEUTRAL: BLUE, P.E.: GREEN/YELLOW)
- Use woodscrews provided by LG Electronics.


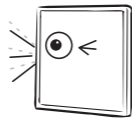



- 1 Drill and prepare the ceiling so that the hole is smaller than the product.
- 2 Connect the 3 product cables to the interior wiring of the building. For finishing cap, use standardized products.
- 3 Check the installation location.



- 4 Fix the product by using woodscrews.
 - Check to see that the product is fixed into place.
- 5 Perform a lighting test to see if the product is working properly.
 - After the installation is complete, remove the protective sheet.

● Check the following before requesting repair service

Symptom	Check
<p>It won't turn on.</p> 	<p>Check to see if the power is connected or if the switch is off.</p> <p>Check to see if the dimming wires has short-circuited.</p>
<p>It flickers.</p> 	<p>Turn the power off. Turn it back on after a moment. (If the flickering problem still exists, make a service request.)</p>
<p>A certain area is dark.</p> 	<p>Make a service request.</p>

● Product Specifications

Category	Specifications							Unit
	53W				60W			
Watts	53.0				60.0			W
Light Color (CCT)	3000	4000	5000	5700	4000	5000	5700	K
Light Output (Lumens)	3600	3800	4000	3900	4600	4900	4800	lm
Lumens per Watt (Efficacy)	68	72	76	74	77	82	80	lm/W
Color Accuracy (CRI)	80							
Beam Angle	82			114				°(degrees)
Size	600 x 600 Type							mm
	T-Bar : 596(W) x 596(D) x 94(H)							
Size	300 x 1200 Type							mm
	M-Bar : 620(W) x 620(D) x 94(H)							
Size	T-Bar : 296(W) x 1256(D) x 94(H)							mm
	M-Bar : 310(W) x 1270(D) x 94(H)							
Product Weight	5							Kg
Input Voltage	AC 110 - 240 ~							V
Input Frequency	50 / 60							Hz
Method of Power Input	Single-Phase Three-Wire System							
Dimming	Dimmable with 0-10V DC control ¹⁾ (Source Current : 1.1mA, Max.)							
Power Factor (PF)	≥ 0.9							

- ¹⁾ Some dimmers may not be compatible.
 ※ Dimming performance may vary depending on the dimmer installed.
 ※ For more information, contact your local LGE sales representative.

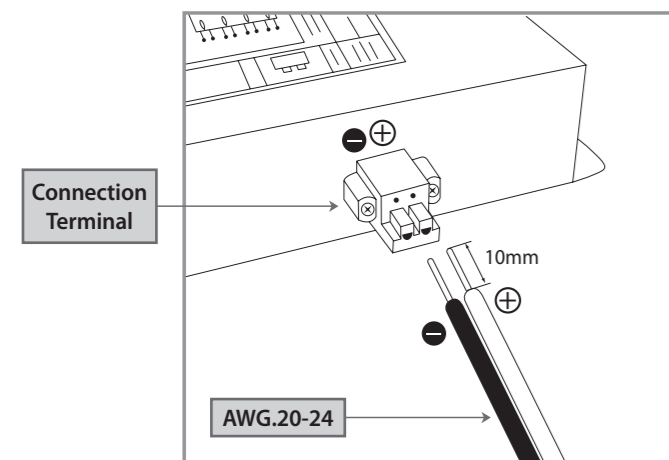
● Model Information

Category		53W	60W
600x600 Type	3000K	T-Bar	LF53073032B.C00***0
		M-Bar	LF53173032B.C00***0
	4000K	T-Bar	LF53074032B.C00***0
		M-Bar	LF53174032B.C00***0
	5000K	T-Bar	LF53075032B.C00***0
		M-Bar	LF53175032B.C00***0
5700K	T-Bar	LF53075732B.C00***0	
	M-Bar	LF53175732B.C00***0	
300x1200 Type	3000K	T-Bar	LF53175732B.C00***0
		M-Bar	LF53173042B.C00***0
	4000K	T-Bar	LF53074042B.C00***0
		M-Bar	LF53174042B.C00***0
	5000K	T-Bar	LF53075042B.C00***0
		M-Bar	LF53175042B.C00***0
5700K	T-Bar	LF53075742B.C00***0	
	M-Bar	LF53175742B.C00***0	

※ Asterisk(*) will vary by model.

● Dimming Terminal Connection

- ※ To dim the lamps, a compatible dimmer should be used. The use of incompatible dimmers will result in damage to the products. Before installing dimmers, verify the compatible dimmer list with your local LGE sales representative.



- ※ This dimming terminal is for cable dimming control use (0-10V).
- ※ Please check the polarity of terminal as shown in the wiring diagram before connecting the dimming wires.
- ※ Do not connect line voltage to the dimming terminal. LGE is not liable for damage due to miswiring 0-10V dimming wires with line voltage.
- ※ Please turn off the power when connecting the dimming wires.
- ※ For more information, contact your local LGE sales representative.

● Limited Warranty

The limited warranty set forth below is given by LG Electronics, Inc. ("LGE") with respect to the lighting product packaged with this limited warranty. (the "Product"). Your Product, when delivered to you in new condition in its original packaging, is warranted against defects in materials or workmanship as follows: for a period of three (3) years from the date of original purchase, defective parts or a defective Product returned to LGE, or its authorized service providers, as applicable, and proven to be defective upon inspection, will be repaired, or exchanged for a new Product, as determined by LGE, or the authorized service provider. This limited warranty is conditioned upon proper storage, installation, use and maintenance complying with their respective published specifications, and does not apply in the following cases: (a) Loss of or damage to the Product due to abuse, mishandling, alteration, accident, electrical current fluctuations failure to follow operating, maintenance or environmental instructions prescribed by LGE in writing or services performed by someone other than LGE or an authorized service provider. To make a warranty claim, contact your local LGE sales representative. After contacting your local LGE sales representative, you will receive instructions regarding if, when and where to ship non-conforming Product. Failed Product must be returned for inspection and verification of non-conformance by LGE. Failure to follow this procedure shall void this warranty. WARRANTY IS VOID IF PRODUCT IS NOT USED FOR THE PURPOSE FOR WHICH THIS PRODUCT IS MANUFACTURED. NO IMPLIED WARRANTY, INCLUDING ANY IMPLIED WARRANTY OF MERCHANTABILITY OR FITNESS FOR A PARTICULAR PURPOSE, APPLIES TO THE PRODUCT AFTER THE APPLICABLE PERIOD OF THE EXPRESS LIMITED WARRANTY STATED ABOVE, AND NO OTHER EXPRESS WARRANTY OR GUARANTY, EXCEPT AS MENTIONED ABOVE, GIVEN BY ANY PERSON OR ENTITY WITH RESPECT TO THE PRODUCT SHALL BIND LGE. (SOME STATES AND PROVINCES DO NOT ALLOW LIMITATIONS ON HOW LONG AN IMPLIED WARRANTY LASTS, SO THE ABOVE LIMITATION MAY NOT APPLY TO YOU.)

