



ENGLISH

OWNER'S MANUAL

LED LCD MONITOR

Please read this manual carefully before operating your set and retain it for future reference.

LED LCD MONITOR MODELS
E2370V
E2770V

www.lg.com

This unit has been engineered and manufactured to ensure your personal safety, however improper use may result in potential electrical shock or fire hazards. In order to allow the proper operation of all safeguards incorporated in this display, observe the following basic rules for its installation, use, and servicing.

On Safety

Use only the power cord supplied with the unit. In case you use another power cord, make sure that it is certified by the applicable national standards if not being provided by the supplier. If the power cable is faulty in any way, please contact the manufacturer or the nearest authorized repair service provider for a replacement.

The appliance coupler is used as the disconnect device.

Please make sure the device is installed near the wall outlet to which it is connected and that the outlet is easily accessible.

Operate the display only from a power source indicated in the specifications of this manual or listed on the display. If you are not sure what type of power supply you have in your home, consult with your dealer.

Overloaded AC outlets and extension cords are dangerous. So are frayed power cords and broken plugs. They may result in a shock or fire hazard. Call your service technician for replacement.

As long as this unit is connected to the AC wall outlet, it is not disconnected from the AC power source even if the unit is turned off.

Do not Open the Display:

- There are no user serviceable components inside.
- There are Dangerous High Voltages inside, even when the power is OFF.
- Contact your dealer if the display is not operating properly.

To Avoid Personal Injury :

- Do not place the display on a sloping shelf unless properly secured.
- Use only a stand recommended by the manufacturer.
- Do not drop an object on or apply impact to the product. Do not throw any toys or objects on the product screen.
It can cause injury to human, problem to product and damage the display.

To Prevent Fire or Hazards:

- Always turn the display OFF if you leave the room for more than a short period of time. Never leave the display ON when leaving the house.
- Keep children from dropping or pushing objects into the display's cabinet openings. Some internal parts carry hazardous voltages.
- Do not add accessories that have not been designed for this display.
- When the display is to be left unattended for an extended period of time, unplug it from the wall outlet.
- In the presence of thunder and lightning, never touch the power cord and signal cable because it can be very dangerous. It can cause electric shock.

On Installation

Do not allow anything to rest upon or roll over the power cord, and do not place the display where the power cord is subject to damage.

Do not use this display near water such as near a bathtub, washbowl, kitchen sink, laundry tub, in a wet basement, or near a swimming pool.

Displays are provided with ventilation openings in the cabinet to allow the release of heat generated during operation. If these openings are blocked, built-up heat can cause failures which may result in a fire hazard. Therefore, NEVER:

- Block the bottom ventilation slots by placing the display on a bed, sofa, rug, etc.
- Place the display in a built-in enclosure unless proper ventilation is provided.
- Cover the openings with cloth or other material.
- Place the display near or over a radiator or heat source.

Do not rub or strike the Active Matrix LCD with anything hard as this may scratch, mar, or damage the Active Matrix LCD permanently.

Do not press the LCD screen with your finger for a long time as this may cause some afterimages.

Some dot defects may appear as Red, Green or Blue spots on the screen. However, this will have no impact or effect on the display performance.

If possible, use the recommended resolution to obtain the best image quality for your LCD display. If used under any mode except the recommended resolution, some scaled or processed images may appear on the screen. However, this is characteristic of the fixed-resolution LCD panel.

Leaving a fixed image on the screen for a long time may cause damage to the screen and cause image burn-in. Make sure to use a screen saver on the product. Burn-in and related problems are not covered by the warranty on this product.

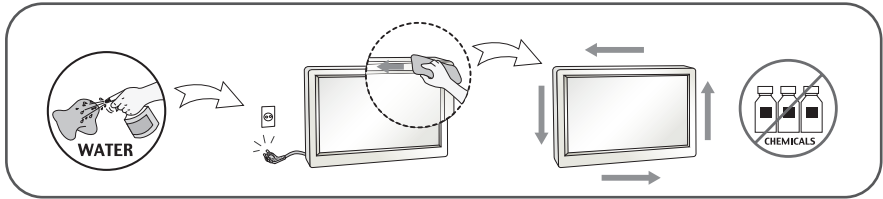
Do not shock or scratch the front and sides of the screen with metallic objects. Otherwise, it may cause damage to the screen.

Make sure the panel faces forward and hold it with both hands to move. If you drop the product, the damaged product can cause electric shock or fire. Contact an authorized the service center for repair.

Avoid high temperatures and humidity.

On Cleaning

- Unplug the display before cleaning the face of the display screen.
- Use a slightly damp (not wet) cloth. Do not use an aerosol directly on the display screen because over-spraying may cause electrical shock.
- When cleaning the product, unplug the power cord and scrub gently with a soft cloth to prevent scratching. Do not clean with a wet cloth or spray water or other liquids directly onto the product. An electric shock may occur. (Do not use chemicals such as benzene, paint thinners or alcohol)
- Spray water onto a soft cloth 2 to 4 times, and use it to clean the front frame; wipe in one direction only. Too much moisture may cause staining.



On Repacking

- Do not throw away the carton and packing materials. They make an ideal container in which to transport the unit. When shipping the unit to another location, repack it in its original material.

On Disposal (Only , Hg lamp used LCD Monitor)

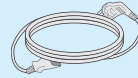
- The fluorescent lamp used in this product contains a small amount of mercury.
- Do not dispose of this product with general household waste.
- Disposal of this product must be carried out in accordance to the regulations of your local authority.

!!! Thank you for selecting LGE products !!!

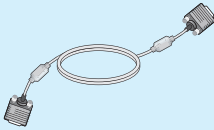
Please make sure the following items are included with your monitor. If any items are missing, contact your dealer.



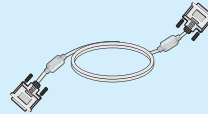
Owner's Manual/Cards



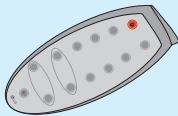
Power Cord
(Depending on the country)



15-pin D-Sub Signal Cable



DVI-D Signal Cable
(This feature is not available in all countries.)



Remote control



Primary Cell Battery, Lithium

NOTE

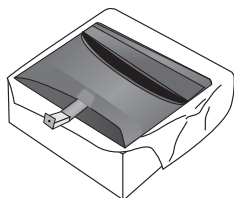
- This accessories may look different from those shown here.
- User must use shielded signal interface cables (D-sub 15 pin cable, DVI-D cable) with ferrite cores to maintain standard compliance for the product.

Connecting the Display

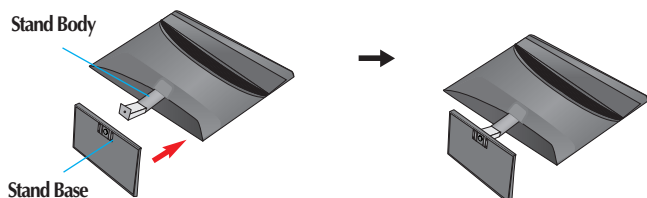
Before setting up the monitor, ensure that the power to the monitor, the computer system, and other attached devices is turned off.

Connecting the stand

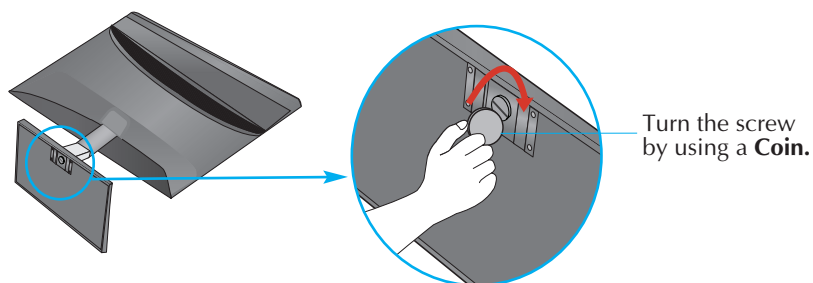
1. Place the monitor face down on the cushion or soft cloth.



2. Assemble the **Stand Base** into the **Stand Body** in the correct direction as shown in the picture.



3. Use a Coin on the bottom of the stand base and turn screw clockwise to tighten.

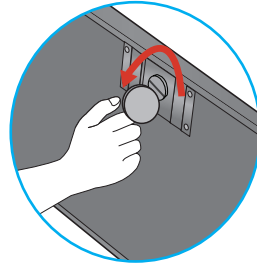


4. Once assembled take the monitor up carefully and face the front side.



Connecting the Display

- Detach the monitor to the Stand Base by turning the screw to the left.



IMPORTANT

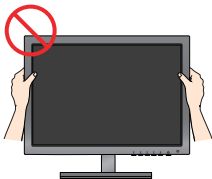
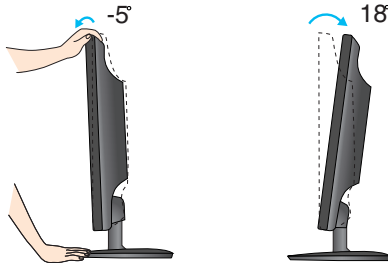
- This illustration depicts the general model of connection. Your monitor may differ from the items shown in the picture.
- Do not carry the product upside down holding only the stand base. The product may fall and get damaged or injure your foot.

Before setting up the monitor, ensure that the power to the monitor, the computer system, and other attached devices is turned off.

Positioning your display

Adjust the position of the panel in various ways for maximum comfort.

- Tilt Range : -5° to 18°



IMPORTANT

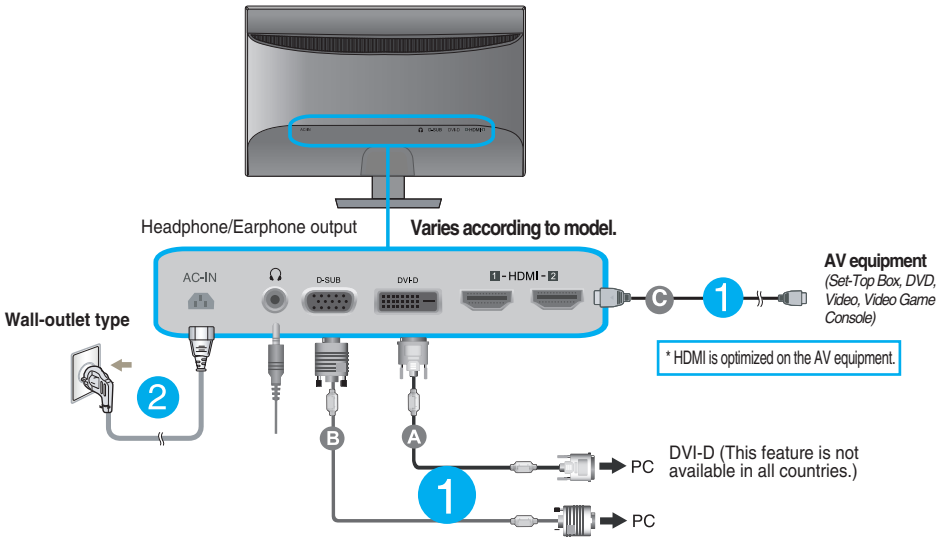
- It is recommended that in order to maintain an ergonomic and comfortable viewing position, the forward tilt angle of the monitor should not exceed 5 degrees.
- Do not touch or press the screen when adjusting the angle of the monitor.

Connecting with the PC

1. Before setting up the monitor, ensure that the power to the monitor, the computer system, and other attached devices is turned off.
2. Connect signal input cable **1** and power cord **2** in order, then tighten the screw of the signal cable.
 - A Connect DVI-D(Digital signal) Cable
 - B Connect D-sub(Analog signal) Cable
 - C Connect HDMI Cable

NOTE

- This is a simplified representation of the rear view.
- This rear view represents a general model; your display may differ from the view as shown.



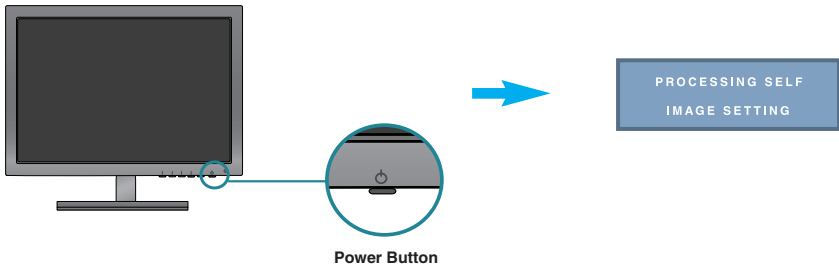
Connect the signal input cable and tighten it up by turning in the direction of the arrow as shown in the figure.

When using a D-Sub signal input cable connector for Macintosh

Mac adapter : For Apple Macintosh use, a separate plug adapter is needed to change the 15 pin high density (3 row) D-sub VGA connector on the supplied cable to a 15 pin 2 row connector.

Connecting the Display

3. Press the power button on the bottom right of the monitor to turn the power on. When monitor power is turned on, the **'Self Image Setting Function'** is executed automatically. (Only Analog Mode)





NOTE

'Self Image Setting Function'? This function provides the user with optimal display settings. When the user connects the monitor for the first time, this function automatically adjusts the display to optimal settings for individual input signals.

'AUTO' Function? When you encounter problems such as blurry screen, blurred letters, screen flicker or tilted screen while using the device or after changing screen resolution, press the AUTO function button to improve resolution.

Remote Control Controls



 Button	Use this button to turn the display on or off.
Input Button	Use this button to select the input signal. (D-SUB/DVI-D/HDMI1/HDMI2)
User Mode Button	Use this button to select the User Mode.
Aspect Ratio Button	Use Aspect Ratio control.
Thru Mode Button	Use Frame-Buffer to prevent picture delay.
SUPER+ Res. Button	Use Super+ Resolution control.
PIP Button	Use this button to select the PIP function.
Swap Button	Use this button to switch between the main screen and the PIP screen.
Brightness Button	To adjust the brightness.
Volume Button	To adjust the volume. (Use for the HDMI input)
 Button	To select the mute. (Use for the HDMI input)

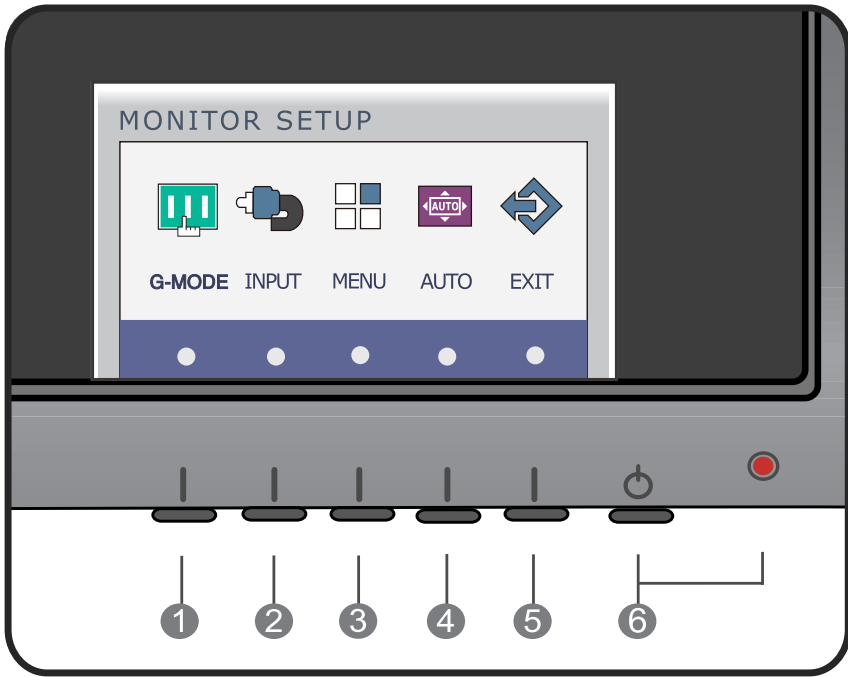
Replacing the Remote Control Battery



1. Take out the battery cap.
2. Replace the battery (CR 2032 3V) with the + side facing up.
3. Close the battery cap.

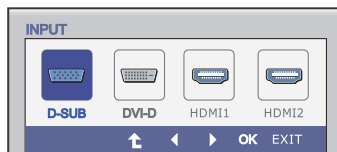
* Use a coin to open or close the battery cover.

Front Panel Controls



- 1 G-MODE Button** Use this button to enter **USER MODE, THRU MODE, SUPER+RESOLUTION, ASPECT RATIO** or **AUTO BRIGHT** menus. For more information, refer to page 15 to 20.

- 2 INPUT Button (SOURCE Hot key)** When two input signals at least are connected, you can select the input signal (D-SUB/DVI-D/HDMI1/HDMI2) you want. When only one signal is connected, it is automatically detected. The default setting is D-Sub.



3 MENU Button

OSD LOCKED

OSD UNLOCKED

OSD LOCKED/UNLOCKED

This function allows you to lock the current control settings, so that they cannot be inadvertently changed. Press and hold the **MENU button** for several seconds. The message "**OSD LOCKED**" should appear.

You can unlock the OSD controls at any time by pushing the **MENU button** for several seconds. The message "**OSD UNLOCKED**" should appear.

4 AUTO Button

PROCESSING AUTO
IMAGE ADJUSTMENT

AUTO IMAGE ADJUSTMENT

When adjusting your display settings, always press the **AUTO** button before entering the On Screen Display(OSD). (Only Analog Mode)

This will automatically adjust your display image to the ideal settings for the current screen resolution size (display mode).

The best display mode is
1920 x 1080

VOLUME Button

To adjust the headphone/ earphone volume.
(Only HDMI Mode)



5 EXIT Button

Exit the OSD(On Screen Display).

6 Power Button & Power Indicator

Use this button to turn the display on or off.

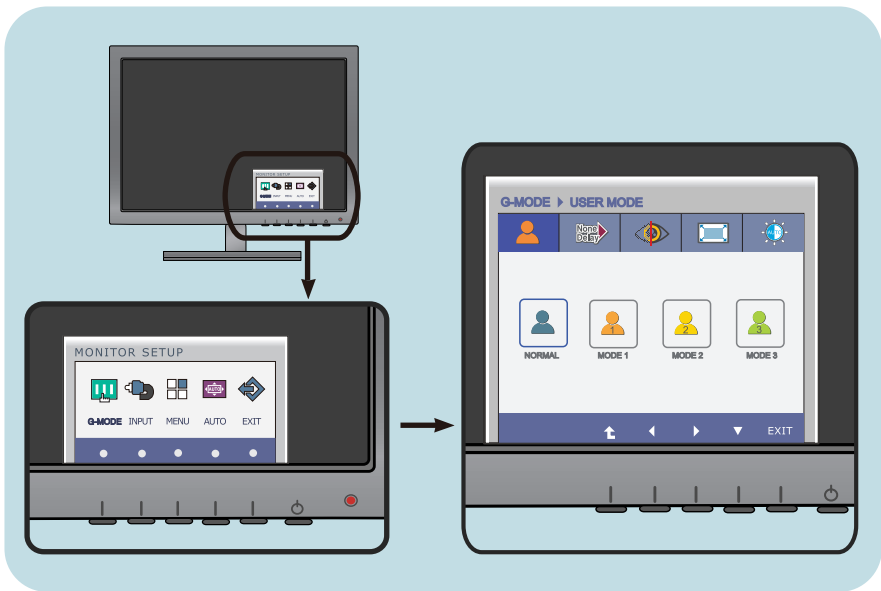
The power indicator stays red if the display is running properly (On Mode). If the display is in Sleep Mode (Energy Saving), the power indicator is blinking red.

Screen Adjustment

Making adjustments to the image size, position and operating parameters of the display is quick and easy with the On Screen Display Control system.

A short example is given below to familiarize you with the use of the controls. The following section is an outline of the available adjustments and selections you can make using the OSD.

To make adjustments in the On Screen Display, follow these steps:



- 1 Press the discretionary button, then the main menu of the OSD appears. (except for the power button)
- 2 To access a control, use the corresponding buttons.
- 3 Use the ◀/▶ buttons to adjust the image to the desired level. Use the ▼ button to select other sub-menu items.
- 4 Press the **EXIT Button** to exit from the OSD.

On Screen Display(OSD) Selection and Adjustment

The following table indicates all the On Screen Display control, adjustment, and setting menus.

D-SUB : D-SUB(Analog signal) input

DVI-D : DVI-D(Digital signal) input

HDMI : HDMI signal

Main menu	Sub-menu	Supported input	Description
G-MODE	USER MODE	D-SUB	Use this menu to select the User Mode.
	THRU MODE	DVI-D HDMI	To prevent picture delay, frame buffer (video memory) is not used in this mode.
	SUPER+ RESOLUTION		With the picture improvement technology that minimizes the degradation of picture quality due to enlargement (e.g. blurred focus and unsharp edge), resolution is not compromised even when images are enlarged, thus guaranteeing a clear image.
	ASPECT RATIO		Use this menu to adjust the aspect ratio of a picture displayed on the screen.
	AUTO BRIGHT		Use this menu to adjust the screen brightness automatically.
INPUT	D-SUB	D-SUB	Use this button to select the input signal. (D-SUB/DVI-D/HDMI1/HDMI2)
	DVI-D	DVI-D	
	HDMI 1	HDMI	
	HDMI 2	HDMI	
PICTURE	BRIGHTNESS	D-SUB DVI-D HDMI	Use this menu to adjust the screen brightness, contrast, sharpness and offset level.
	CONTRAST		
	SHARPNESS		
	BLACK LEVEL	HDMI	
COLOR	COLOR TEMP	D-SUB DVI-D HDMI	To customize the color of the screen
	(PRESET) sRGB WARM MEDIUM COOL	(USER) RED GREEN BLUE	
	GAMMA		
	HUE	HDMI	
	SATURATION		
	COLOR RESET	D-SUB DVI-D HDMI	

On Screen Display(OSD) Selection and Adjustment

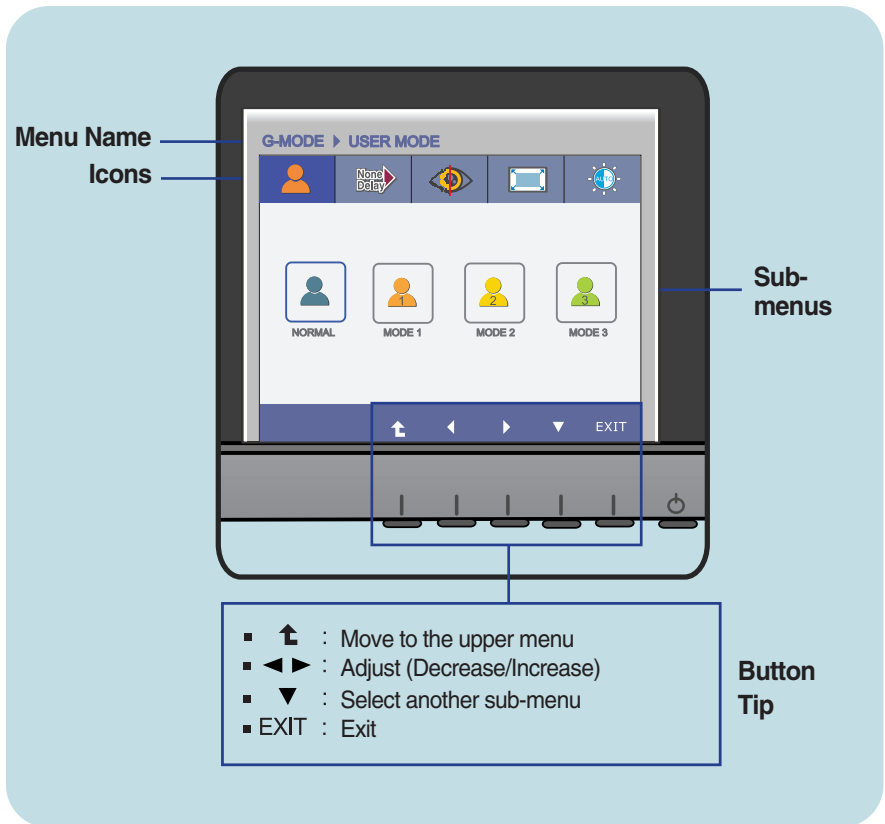
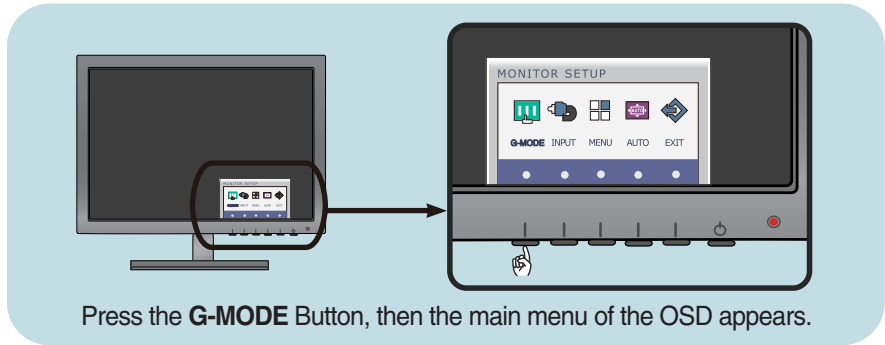
DISPLAY	HORIZONTAL VERTICAL	D-SUB	To adjust the position of the screen
	CLOCK PHASE	D-SUB	To improve the clarity and stability of the screen
	OVERSCAN	HDMI	Use this menu to allow the picture to completely fill the screen, removing noise around the edges of HDMI input video signal.
OTHERS	LANGUAGE	D-SUB DVI-D HDMI	Use this menu to set the user preferences and the picture options.
	WHITE BALANCE	D-SUB	
	POWER INDICATOR	D-SUB	
	FACTORY RESET	DVI-D HDMI	
PIP	PIP ON / OFF	D-SUB	To adjust PIP function
	PIP INPUT	DVI-D	
	PIP POSITION	HDMI	
	PIP SWAP		
	PIP SOUND	HDMI	
	PIP VOLUME		

NOTE

- The order of icons may differ depending on the model (13 to 28).

On Screen Display(OSD) Selection and Adjustment

You were introduced to the procedure of selecting and adjusting an item using the OSD system. Listed below are the icons, icon names, and icon descriptions of the all items shown on the Menu.



NOTE

- OSD (On Screen Display) menu languages on the monitor may differ from the manual.

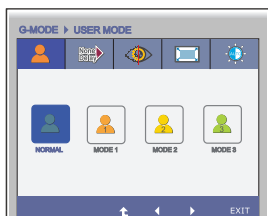
On Screen Display(OSD) Selection and Adjustment

This menu allows you to easily customize the settings to your preferences, such as Brightness, SUPER+ RESOLUTION, and screen Aspect Ratio. Once set, you can select the optimized mode depending on your preferences.

Main menu	Sub menu	Description
-----------	----------	-------------

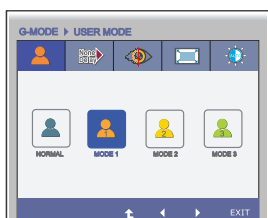


USER MODE



NORMAL

The following is the default setting.
ASPECT RATIO (Full),
SUPER+ RESOLUTION (NORMAL),
BRIGHTNESS (100)



MODE 1 MODE 2 MODE 3

If you select MODE1 in USER MODE and set ASPECT RATIO, SUPER+ RESOLUTION, and BRIGHTNESS for your preferences, the settings are saved in MODE1. You can save your preferences in MODE2 and MODE3 in the same way.

- : Move to the upper menu
- , : Move
- **EXIT** : Exit


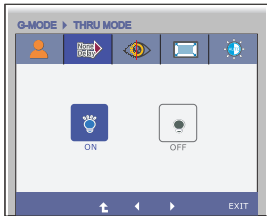



* The table shows the settings available for three menus in each user mode.

USER MODE	ASPECT RATIO	SUPER+ RESOLUTION	BRIGHTNESS	Remark
NORMAL	FULL/ORIGINAL/1:1	NORMAL/LOW/MEDIUM/HIGH	0 to 100	Brightness, SUPER+ RESOLUTION, and screen aspect ratio can be customized for user preferences.
MODE 1	FULL/ORIGINAL/1:1	NORMAL/LOW/MEDIUM/HIGH	0 to 100	
MODE 2	FULL/ORIGINAL/1:1	NORMAL/LOW/MEDIUM/HIGH	0 to 100	
MODE 3	FULL/ORIGINAL/1:1	NORMAL/LOW/MEDIUM/HIGH	0 to 100	

If you set the ASPECT RATIO, SUPER+ RESOLUTION, BRIGHTNESS menus for your preferences, such as UCC video viewing, gaming and Internet surfing, you can change the settings for the three menus at once by simply changing the mode.


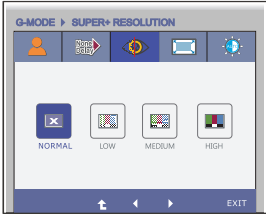
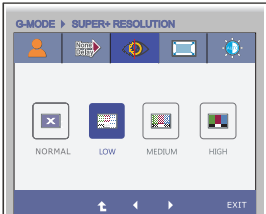
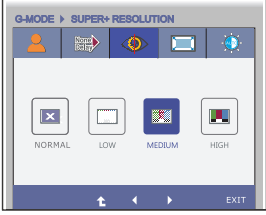
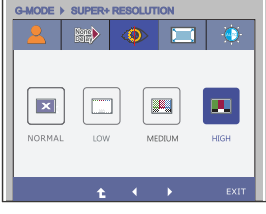


- * The settings in MODE1, MODE2 and MODE3 are not changed even after factory reset unless you change them.
- * You can save the customized settings in the General mode.
However, the settings are changed to the factory default after factory reset.

On Screen Display(OSD) Selection and Adjustment

Main menu	Sub menu	Description
	THRU MODE	
	ON	Not use the Frame-Buffer memory to prevent the picture delay. It can use in GAME MODE to prevent picture delay. The screen blinks when you set THRU MODE to ON or OFF.
	OFF	Frame buffer (video memory) is used.
<ul style="list-style-type: none">▪  : Move to the upper menu▪  : Move▪ EXIT : Exit		


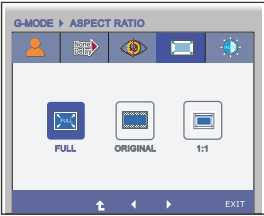
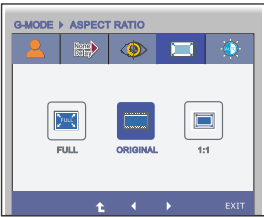
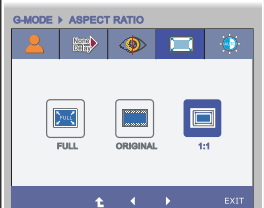
* Frame buffer must be used for PIP, screen aspect ratio, and HDMI video signal input. (THRU MODE OFF)
This function cannot be used with THRU MODE ON.




On Screen Display(OSD) Selection and Adjustment

Main menu	Sub menu	Description
	SUPER+ RESOLUTION	
	NORMAL	Select this when you want to use the product in the most general using environment. In the General mode, the SUPER+ RESOLUTION is turned off.
	LOW	When the user wants a natural video screen with soft image, it helps to get the optimized screen. It is effective for video with small movement or still image.
	MEDIUM	When the user wants a comfortable video screen at the medium level between low and high mode, it helps to get the optimized screen. It is effective for UCC and SD level videos.
	HIGH	When the user wants a sharp video screen with clear images, it helps to get the optimized screen. It is effective for high resolution video screens and games.
<ul style="list-style-type: none">■  : Move to the upper menu■  : Move■ EXIT : Exit		


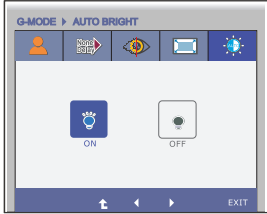
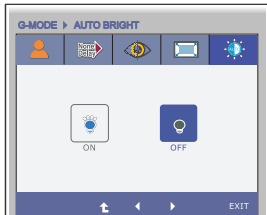



* Noise may exist according to SR(SUPER+ RESOLUTION) Mode, so enjoy the clear image by selecting SR(SUPER+ RESOLUTION) Mode according to the Contents.

On Screen Display(OSD) Selection and Adjustment

Main menu	Sub menu	Description
	ASPECT RATIO	
	FULL	The picture will be displayed with Full size.
	ORIGINAL	The picture will be displayed with input resolution ratio scaling. If 640 x 480 resolution input, the picture will keep at 4:3 ratio scaling.
	1:1	The picture will be displayed depends on Input resolution.No Scaling. If 640 x 480 resolution input, the picture will just display 640 x 480 size even though the 1920 x 1080 size panel.

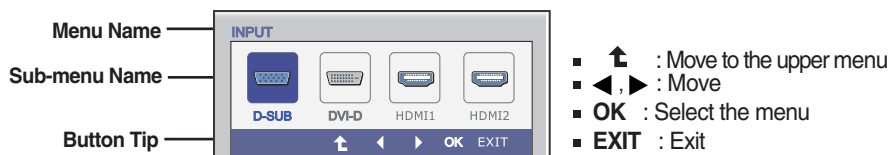
-  : Move to the upper menu
-  ,  : Move
- **EXIT** : Exit

On Screen Display(OSD) Selection and Adjustment

Main menu	Sub menu	Description
	AUTO BRIGHT	
	ON	Select this to adjust the brightness automatically. If it is set to ON, the screen brightness is automatically adjusted using the light sensor. Depending on the ambient brightness or input data, the screen brightness is adjusted by adjusting the backlight to provide the optimal playback experience.
	OFF	Auto brightness adjustment function is turned OFF .
<ul style="list-style-type: none">■  : Move to the upper menu■  ,  : Move■ EXIT : Exit		

On Screen Display(OSD) Selection and Adjustment

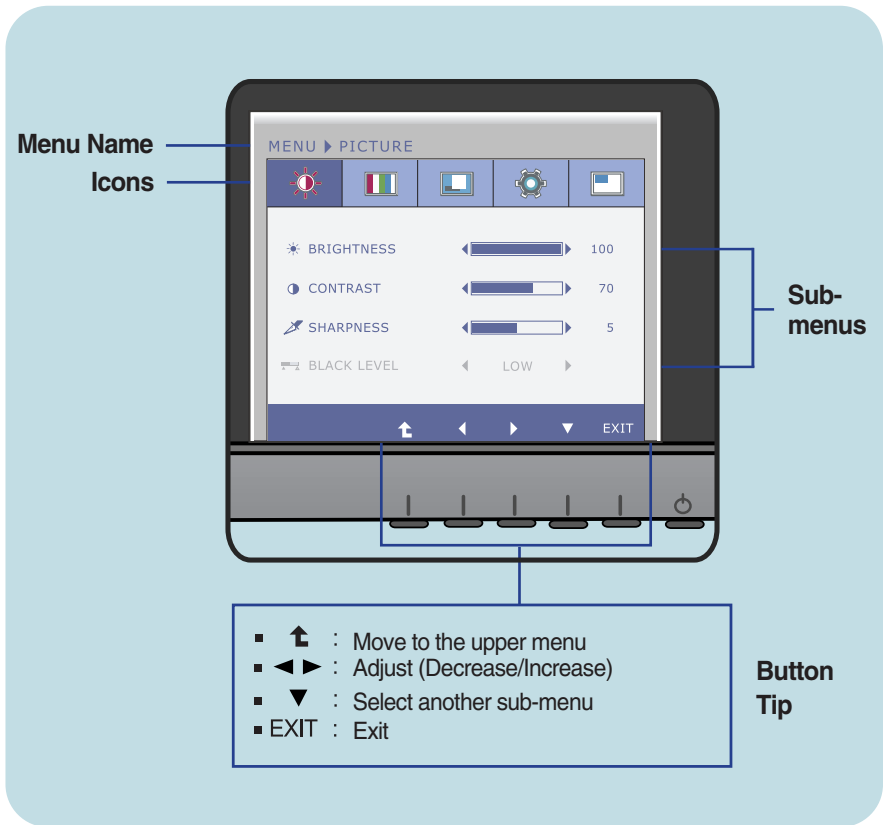
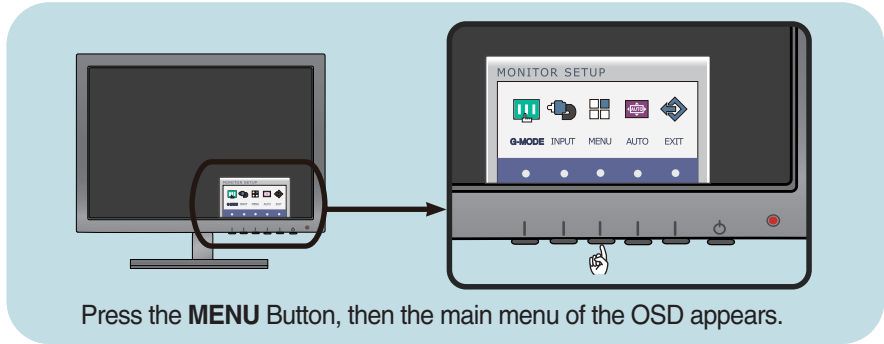
- ■ ■ The OSD screen will appear when you press the **INPUT** button on the front of the monitor.



Main menu	Sub menu	Description
	D-SUB	This inputs video signals in analog format. Connect a 15-pin D-Sub cable and select D-SUB.
	DVI-D	This inputs video signals in digital format. Connect a DVI-D cable and select DVI-D.
	HDMI 1	This inputs video and audio signals in digital format. Connect a HDMI cable and select HDMI.
	HDMI 2	

On Screen Display(OSD) Selection and Adjustment

You were introduced to the procedure of selecting and adjusting an item using the OSD system. Listed below are the icons, icon names, and icon descriptions of the all items shown on the Menu.



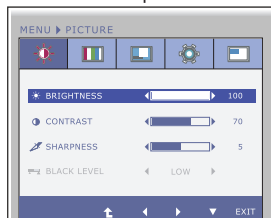
NOTE

- OSD (On Screen Display) menu languages on the monitor may differ from the manual.

Main menu	Sub menu	Description
-----------	----------	-------------

 **PICTURE**

D-SUB/DVI-D input



BRIGHTNESS To adjust the brightness of the screen.

CONTRAST To adjust the contrast of the screen.

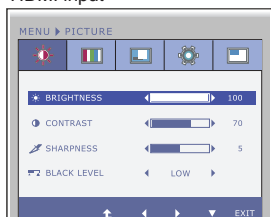
SHARPNESS To adjust the clearness of the screen.





BLACK LEVEL You can set the offset level. If you select **'HIGH'**, the screen will be bright and if you select **'LOW'**, the screen will be dark. (only for HDMI input)

*** Offset?**

As the criteria for video signal, it is the darkest screen the monitor can show.

HDMI input



-  : Move to the upper menu
-  : Decrease
-  : Increase
-  : Select another sub-menu
- **EXIT** : Exit

On Screen Display(OSD) Selection and Adjustment

Main menu	Sub menu	Description
-----------	----------	-------------



COLOR

PRESET Mode



COLOR TEMP Select either **PRESET** or **USER** to adjust the screen color.

PRESET

Select the screen color.

- sRGB: Set the screen color to fit the sRGB standard color specification.
- You can select different color temperatures: WARM, MEDIUM and COOL. The higher the color temperature gets, the bluer the screen becomes; the lower the color temperature gets, the redder the screen becomes. (The color temperature becomes higher in the order of WARM < MEDIUM < COOL.)

USER Mode



USER

- RED** You can customize the picture color using Red, Green and Blue colors.
- GREEN**
- BLUE**

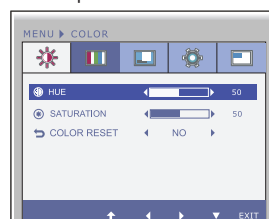
D-SUB/DVI-D input



GAMMA

Set your own gamma value. : 1 / 2 / 3
On the monitor, high gamma values display whitish images and low gamma values display blackish images.

HDMI input



HUE

Set your own hue levels.
(only for HDMI input)

SATURATION

Set your own saturation levels.
(only for HDMI input)

* This option is enabled only for HDMI signal input in YUV color format.

- : Move to the upper menu
- : Decrease
- : Increase
- : Select another sub-menu
- **EXIT** : Exit

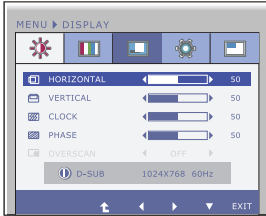
COLOR RESET

Use this menu to reset the color to factory settings.

Main menu	Sub menu	Description
-----------	----------	-------------

 **DISPLAY**

D-SUB input

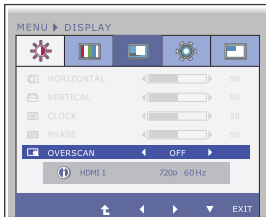


HORIZONTAL To move image left and right.

VERTICAL To move image up and down.





CLOCK To minimize any vertical bars or stripes visible on the screen background. The horizontal screen size will also change.

HDMI input



PHASE To adjust the focus of the display. This item allows you to remove any horizontal noise and clear or sharpen the image of characters.

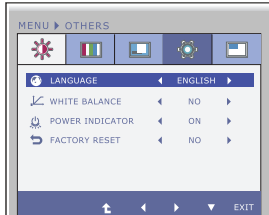
OVERSCAN Removes noise that may occur at the edges of an image when HDMI is connected to an external device. When ON is selected, the image size is reduced to prevent noise. When OFF is selected, the original image size is maintained regardless of noise. (Only for HDMI input)

-  : Move to the upper menu
-  : Decrease
-  : Increase
-  : Select another sub-menu
- **EXIT** : Exit

Main menu	Sub menu	Description
-----------	----------	-------------

 **OTHERS**

D-SUB input



LANGUAGE

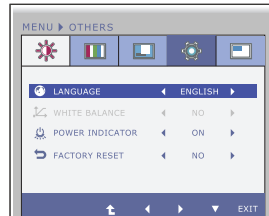
To choose the language in which the control names are displayed.

WHITE BALANCE

If the output of the video card is different the required specifications, the color level may deteriorate due to video signal distortion. Using this function, the signal level is adjusted to fit into the standard output level of the video card in order to provide the optimal image.

Activate this function when white and black colors are present in the screen.

HDMI/DVI-D input







POWER INDICATOR

Use this menu to set the power indicator (on the bottom right of the monitor) to ON or OFF.



If you set **OFF**, it will go off.

If you set **ON** at any time, the power indicator will automatically be turned on.

-  : Move to the upper menu
-  : Decrease
-  : Increase
-  : Select another sub-menu
- **EXIT** : Exit

FACTORY RESET

Restore all factory default settings except "LANGUAGE."

Press the  ,  buttons to reset immediately.

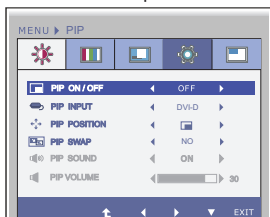
NOTE

- If this does not improve the screen image, restore the factory default settings. If necessary, execute the WHITE BALANCE function again. This function will be enabled only when the input signal is an analog signal.

Main menu	Sub menu	Description
-----------	----------	-------------

 **PIP**

D-SUB/DVI-D input



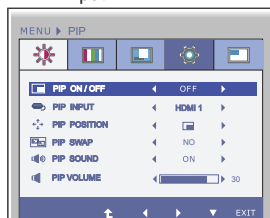
PIP ON/OFF

To select PIP on or off.

* The combinations of main screen and sub-screen (PIP) available are as shown below:

Main screen \ Sub-screen (PIP)	Main screen			
	D-SUB	DVI-D	HDMI 1	HDMI 2
D-SUB	-	O	O	O
DVI-D	O	-	O	O
HDMI 1	O	O	-	X
HDMI 2	O	O	X	-

HDMI input











PIP INPUT

Select PIP input.

PIP POSITION

Select the PIP display location. Every time you touch the ► button, it will move from ① to ②, ③, ④. Every time you press the ◀ button, it will move from ① to ④, ③, ②. You can use this menu to select the PIP display location you want.

-  : Move to the upper menu
-  : Decrease
-  : Increase
-  : Select another sub-menu
- **EXIT** : Exit

- ①  : Top left
- ②  : Bottom left
- ③  : Bottom right
- ④  : Top right

*It operates only when PIP is on.

PIP SWAP

Use this menu to switch between the main menu and the sub menu.

PIP SOUND

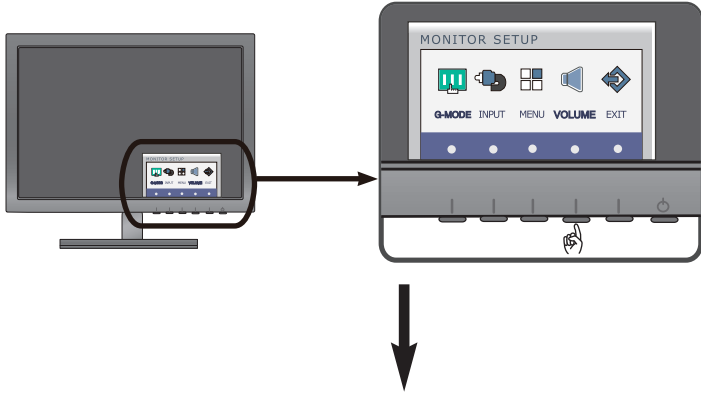
Use this menu to turn the PIP Sound on or off. (Only for HDMI input)

PIP VOLUME

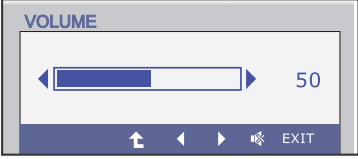
Use this menu to adjust the volume of the PIP Sound. (Only for HDMI input)

On Screen Display(OSD) Selection and Adjustment

- ■ ■ The OSD screen will appear when you press the **VOLUME** button on the front of the monitor.



<p>Menu Name</p> <p>Sub-menu Name</p> <p>Button Tip</p>		<ul style="list-style-type: none"> ■ ↑ : Move to the upper menu ■ ◀ : Decrease ■ ▶ : Increase ■ 🔇 : Mute ■ EXIT : Exit
---	--	---

Main menu	Sub menu	Description
HDMI input 	VOLUME	To adjust the volume of headphone/ Earphone. (Only for HDMI input)

Check the following before calling for service.

No image appears	
<ul style="list-style-type: none">● Is the power cord of the display connected?	<ul style="list-style-type: none">• Check and see if the power cord is connected properly to the power outlet.
<ul style="list-style-type: none">● Is the power indicator light on?	<ul style="list-style-type: none">• Press the Power button.
<ul style="list-style-type: none">● Is the power indicator blinking?	<ul style="list-style-type: none">• If the display is in power saving mode, try moving the mouse or pressing any key on the keyboard to bring up the screen.• Try to turn on the PC.
<ul style="list-style-type: none">● Do you see an "OUT OF RANGE" message on the screen?	<ul style="list-style-type: none">• This message appears when the signal from the PC (video card) is out of horizontal or vertical frequency range of the display. See the 'Specifications' section of this manual and configure your display again.
<ul style="list-style-type: none">● Do you see a "CHECK SIGNAL CABLE" message on the screen?	<ul style="list-style-type: none">• This message appears when the signal cable between your PC and your display is not connected. Check the signal cable and try again.

Do you see a "OSD LOCKED" message on the screen?	
<ul style="list-style-type: none">● Do you see "OSD LOCKED" when you push MENU button?	<ul style="list-style-type: none">• You can secure the current control settings, so that they cannot be inadvertently changed. You can unlock the OSD controls at any time by pushing the MENU button for several seconds: the message "OSD UNLOCKED" will appear.

Display image is incorrect

- | | |
|---|--|
| <ul style="list-style-type: none">● Display Position is incorrect. | <ul style="list-style-type: none">• Press the AUTO button to automatically adjust your display image to the ideal setting. |
| <ul style="list-style-type: none">● On the screen background, vertical bars or stripes are visible. | <ul style="list-style-type: none">• Press the AUTO button to automatically adjust your display image to the ideal setting. |
| <ul style="list-style-type: none">● Any horizontal noise appearing in any image or characters are not clearly portrayed. | <ul style="list-style-type: none">• Press the AUTO button to automatically adjust your display image to the ideal setting.• Check Control Panel --> Display --> Settings and adjust the display to the recommended resolution or adjust the display image to the ideal setting. Set the color setting higher than 24 bits (true color). |

IMPORTANT

- Check **Control Panel --> Display --> Settings** and see if the frequency or the resolution were changed. If yes, readjust the video card to the recommend resolution.
- If the recommended resolution (optimal resolution) is not selected, letters may be blurred and the screen may be dimmed, truncated or biased. Make sure to select the recommend resolution.
- The setting method can differ by computer and O/S (Operation System), and resolution mentioned above may not be supported by the video card performance. In this case, please ask to the computer or the video card manufacturer.

Display image is incorrect

- | | |
|--|--|
| <ul style="list-style-type: none">● The screen color is mono or abnormal.

● The screen blinks. | <ul style="list-style-type: none">• Check if the signal cable is properly connected and use a screwdriver to fasten if necessary.• Make sure the video card is properly inserted in the slot.• Set the color setting higher than 24 bits (true color) at Control Panel - Settings.
• Check if the screen is set to interlace mode and if yes, change it to the recommend resolution. |
|--|--|

Do you see an "Unrecognized monitor, Plug&Play (VESA DDC) monitor found" message?

- | | |
|---|--|
| <ul style="list-style-type: none">● Have you installed the display driver? | <ul style="list-style-type: none">• Be sure to install the display driver from the display driver CD (or diskette) that comes with your display. Or, you can also download the driver from our web site: http://www.lg.com.
• Make sure to check if the video card supports Plug&Play function. |
|---|--|

The Audio function is not working

- | | |
|---|--|
| <ul style="list-style-type: none">● Picture OK & No sound. | <ul style="list-style-type: none">• Check whether volume is "0".• Check sound muted.• HDMI cable installed properly.• Head phone cable installed properly.• Check sound format. Not supply to compressed sound format. |
|---|--|

Display	58.42 cm (23 inch) Flat Panel Active matrix-TFT LCD Anti-Glare coating Visible diagonal size : 58.42 cm 0.2652 mm x 0.2652 mm (Pixel pitch)	
Sync Input	Horizontal Freq.	Analog,Digital: 30 kHz to 83 kHz HDMI : 30 kHz to 83 kHz
	Vertical Freq.	Analog,Digital : 56 Hz to 75 Hz HDMI : 56 Hz to 61 Hz
	Input Form	Separate Sync., Digital
Video Input	Signal Input	15 pin D-Sub Connector DVI-D connector (Digital) 19 pin HDMI Connector
	Input Form	Analog (0.7 Vp-p/ 75 ohm), Digital, HDMI
Resolution	Max	VESA 1920 x 1080 @ 60 Hz
	Recommend	VESA 1920 x 1080 @ 60 Hz
Plug&Play	DDC 2B (Analog, Digital, HDMI)	
Power Consumption	On Mode	: 39 W (Typ.)
	Sleep Mode	≤ 1 W
	Off Mode	≤ 0.5 W
Dimensions & Weight	With Stand	Without Stand
	Width 55.62 cm (21.90 inch) Height 41.27 cm (16.25 inch) Depth 17.78 cm (7 inch)	Width 55.62 cm (21.90 inch) Height 34.51 cm (13.59 inch) Depth 6.04 cm (2.38 inch)
	Weight(excl. packing)	4.4 kg (9.70 lb)
Range	Tilt : -5° to 18°	
Power Input	AC 100-240 V~ 50 / 60 Hz 0.7 A	
Environmental Conditions	Operating Conditions	
	Temperature	10 °C to 35 °C
	Humidity	10 % to 80 % non-Condensing
	Storage Conditions	
	Temperature	-20 °C to 60 °C
	Humidity	5 % to 90 % non-Condensing
Stand Base	Attached (<input type="checkbox"/>), Detached (<input type="radio"/>)	
Power cord	Wall-outlet type	

NOTE

- Information in this document is subject to change without notice.

Display	68.6 cm (27 inch) Flat Panel Active matrix-TFT LCD Anti-Glare coating Visible diagonal size : 68.6 cm 0.3114 mm x 0.3114 mm (Pixel pitch)	
Sync Input	Horizontal Freq.	Analog,Digital: 30 kHz to 83 kHz HDMI : 30 kHz to 83 kHz
	Vertical Freq.	Analog,Digital : 56 Hz to 75 Hz HDMI : 56 Hz to 61 Hz
	Input Form	Separate Sync., Digital
Video Input	Signal Input	15 pin D-Sub Connector DVI-D connector (Digital) 19 pin HDMI Connector
	Input Form	Analog (0.7 Vp-p/ 75 ohm), Digital, HDMI
Resolution	Max	VESA 1920 x 1080 @ 60 Hz
	Recommend	VESA 1920 x 1080 @ 60 Hz
Plug&Play	DDC 2B (Analog, Digital, HDMI)	
Power Consumption	On Mode	: 41 W (Typ.)
	Sleep Mode	≤ 1 W
	Off Mode	≤ 0.5 W
Dimensions & Weight	With Stand Width 65.46 cm (25.77 inch) Height 48.85 cm (19.23 inch) Depth 23.08 cm (9.09 inch)	Without Stand Width 65.46 cm (25.77 inch) Height 40.45 cm (15.93 inch) Depth 6.04 cm (2.38 inch)
	Weight(excl. packing)	5.6 kg (12.35 lb)
Range	Tilt : -5° to 18°	
Power Input	AC 100-240 V~ 50 / 60 Hz 0.7 A	
Environmental Conditions	Operating Conditions Temperature 10 °C to 35 °C Humidity 10 % to 80 % non-Condensing	
	Storage Conditions Temperature -20 °C to 60 °C Humidity 5 % to 90 % non-Condensing	
Stand Base	Attached (<input type="checkbox"/>), Detached (<input type="radio"/>)	
Power cord	Wall-outlet type	

NOTE

- Information in this document is subject to change without notice.

Preset Modes (Resolution)

D-SUB/DVI-D Timing

Display Modes (Resolution)		Horizontal Freq. (kHz)	Vertical Freq. (Hz)
1	640 x 350	31.469	70
2	720 x 400	31.468	70
3	640 x 480	31.469	60
4	640 x 480	37.500	75
5	800 x 600	37.879	60
6	800 x 600	46.875	75
7	1024 x 768	48.363	60
8	1024 x 768	60.123	75
9	1152 x 864	67.500	75
10	1280 x 1024	63.981	60
11	1280 x 1024	79.976	75
12	1680 x 1050	64.674	60
13	1680 x 1050	65.290	60
*14	1920 x 1080	67.500	60

*Recommend Mode

HDMI Timing

Display Modes (Resolution)		Horizontal Freq. (kHz)	Vertical Freq. (Hz)
1	480P	31.50	60
2	576P	31.25	50
3	720P	37.50	50
4	720P	45.00	60
5	1080i	28.12	50
6	1080i	33.75	60
7	1080P	56.25	50
8	1080P	67.50	60

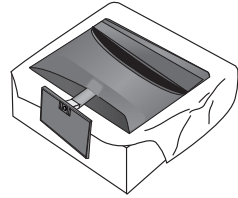
Indicator

MODE	LED Color
On Mode	Red
Sleep Mode	Red Blinking
Off Mode	Off

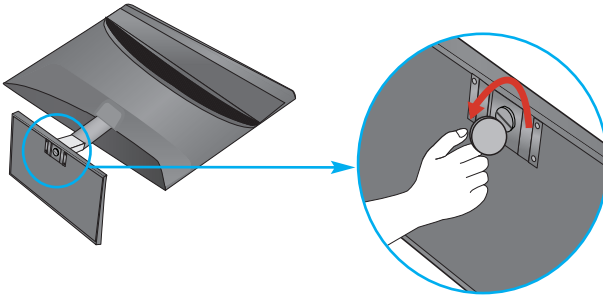
Installing the Wall mount plate

This monitor satisfies the specifications of the Wall mount plate or the interchange device.

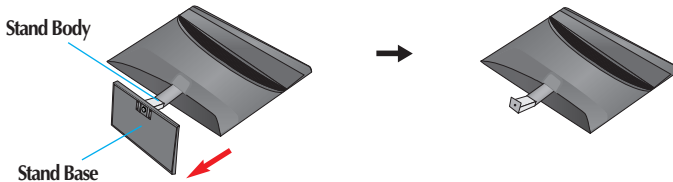
1. Place the monitor face down on the cushion or soft cloth.



2. To remove the **Stand Base** from the **Stand Body**, turn the screw counterclockwise using a coin.

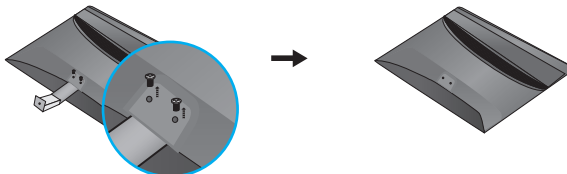


3. Check the direction of the **Stand Base** and pull it from the **Stand Body** in the direction shown in the figure below.

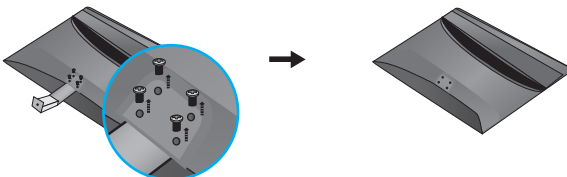


4. Loosen the screws on the back of the monitor to remove the **Stand Body** from the monitor.

(E2370V)



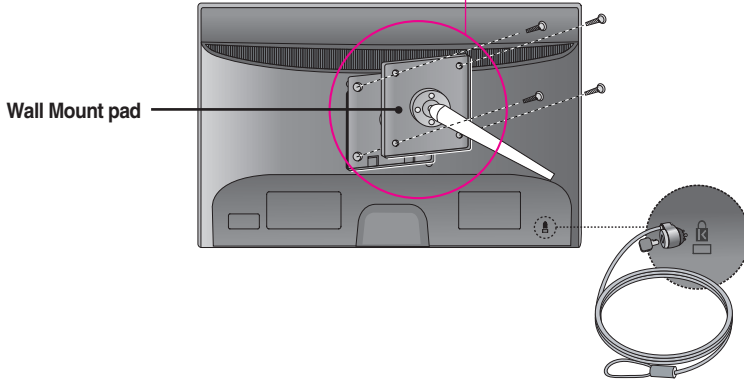
(E2770V)



5. Install the Wall mount plate.

Wall mount plate (Separate purchase)

This is stand-type or wall mount type and is connectable with Wall mount plate. Please refer to the installation guide for more details, which is provided when Wall mount plate is purchased.



<Screw Mounting Interface Dimension>

Hole spacing : 100 mm x 100 mm. (E2370V)
200 mm x 100 mm. (E2770V)

Kensington Security Slot

Connected to a locking cable that can be purchased separately at most computer stores.



Make sure to read the Important Precautions before using the product.

Keep the Owner's Manual(CD) in an accessible place for future reference.

The model and serial number of the SET is located on the back and one side of the SET. Record it below should you ever need service.

MODEL _____

SERIAL _____

ENERGY STAR is a set of power-saving guidelines issued by the U.S. Environmental Protection Agency(EPA).



As an ENERGY STAR Partner LGE U. S. A.,Inc. has determined that this product meets the ENERGY STAR guidelines for energy efficiency.