



**LG**

Life's Good

ENGLISH

OWNER'S MANUAL

# CINEMA 3D GLASSES-FREE MONITOR

Please read this manual carefully before operating your set and retain it for future reference.

CINEMA 3D GLASSES-FREE MONITOR MODEL  
D2500N

[www.lg.com](http://www.lg.com)

# CONTENTS

## 3 ASSEMBLING AND PREPARING

---

- 3 Unpacking
- 4 Parts and buttons
- 6 Lifting and moving the Monitor
- 6 Setting Up the Monitor
  - 6 - Attaching the Stand Base
  - 7 - Adjusting the stand height
  - 7 - Adjusting the angle
  - 8 - Swivel stand
  - 8 - Detaching the stand base
  - 8 - Detaching the stand body
  - 9 - Mounting on a table
  - 10 - Mounting on a wall

## 12 USING THE MONITOR

---

- 12 Connecting to a PC
  - 12 - DVI-D connection
  - 12 - HDMI connection
- 13 Connecting to a PC (3D Mode)
  - 13 - DVI-D connection
  - 13 - HDMI connection

## 15 CUSTOMIZING SETTINGS

---

- 15 Accessing The Main Menus
- 16 Customizing Settings
  - 16 - Menu Settings
  - 17 - SUPER ENERGY SAVING Settings
  - 18 - Things you need to check before installing TriDef 3D
  - 18 - 3D Settings(Supported only in 3D mode
    - PC input)

## 19 TROUBLESHOOTING

---

## 20 TROUBLESHOOTING WHEN USING 3D MODE

---

## 22 SPECIFICATIONS

---

- 23 Preset Modes (Resolution)
- 23 HDMI TIMING
- 23 Indicator

## 24 SAFETY PRECAUTIONS

---

- 24 Precautions to take when viewing 3D images

## 25 PROPER POSTURE

---

- 25 Proper posture for using the Monitor.
- 25 Precautions to take when viewing 3D images

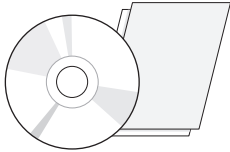
## 26 LICENSES

---

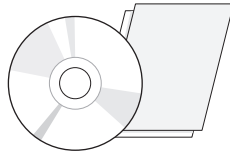
# ASSEMBLING AND PREPARING

## Unpacking

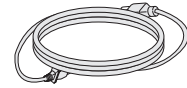
Check your product box for the following items. If there are any missing accessories, contact the local dealer where you purchased your product. The illustrations in this manual may differ from the actual product and accessories.



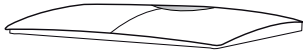
**CD(Owner's Manual) /  
Card**



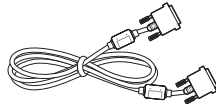
**TriDef 3D software Program CD /  
Quick Installation Guide**



**Power Cord**



**Stand Base**



**DVI-D Cable**  
(In some countries, this  
accessory may not be  
provided.)



**USB Cable**



### CAUTION

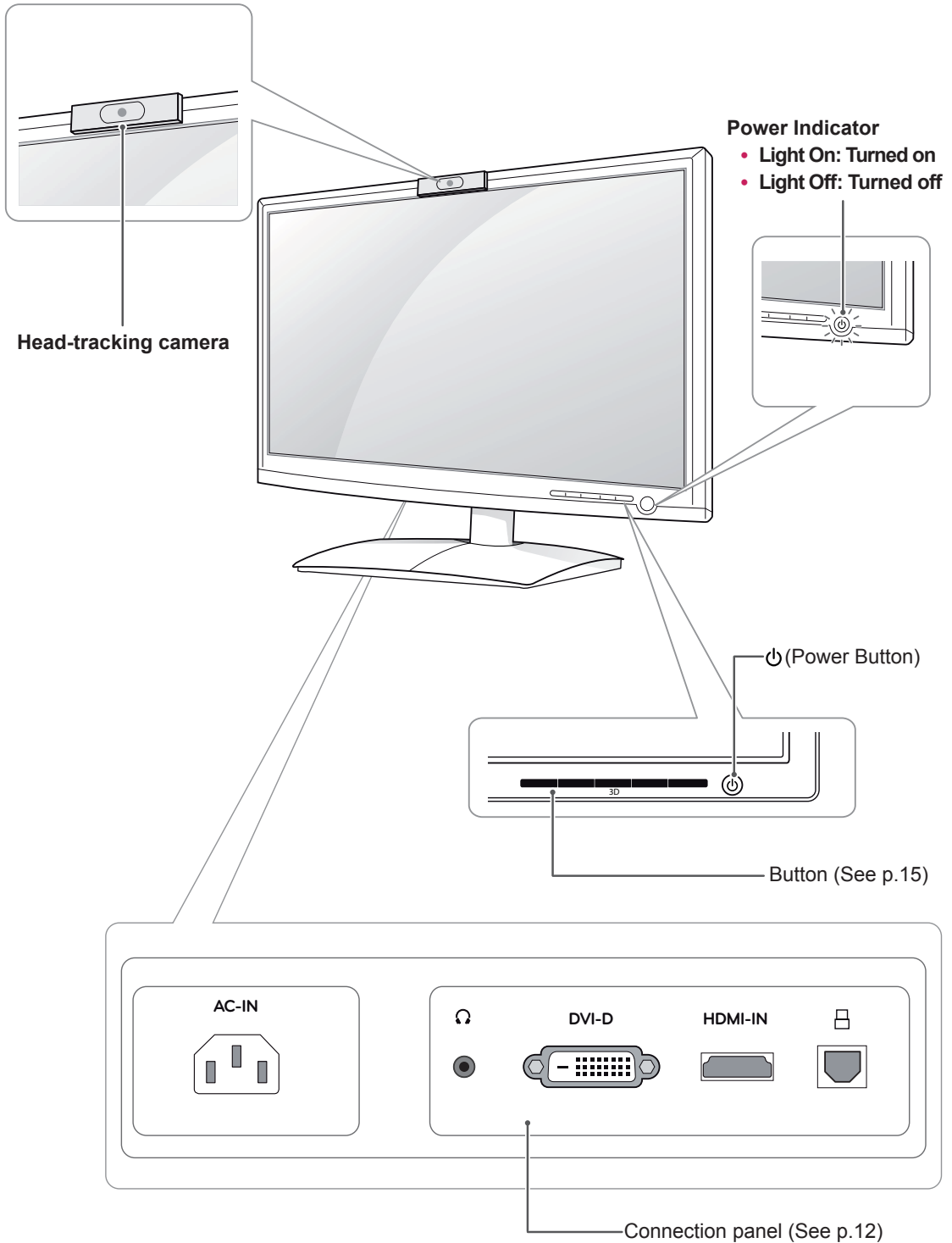
- Do not use any unapproved accessories to ensure the safety and product life span.
- Any damages or injuries by using unapproved accessories are not covered by the warranty.



### NOTE

- The accessories supplied with your product may vary depending on the model.
- Product specifications or contents in this manual may be changed without prior notice due to upgrade of product functions.
- User should use shielded signal interface cables (DVI-D cable) with ferrite cores to maintain standard compliance for the product.

# Parts and buttons



Button	Description		
MENU	<p data-bbox="395 220 751 245">Accesses the main menus.(See p.16)</p> <table border="1" data-bbox="395 247 1234 421"> <tr> <td data-bbox="395 247 637 421"><b>OSD LOCKED/ UNLOCKED</b></td> <td data-bbox="637 247 1234 421"> <p data-bbox="644 253 1227 415">This function allows you to lock the current control settings, so that they cannot be inadvertently changed. Press and hold the MENU button for several seconds. The message "OSD LOCKED" should appear. You can unlock the OSD controls at any time by pushing the MENU button for several seconds. The message "OSD UNLOCKED" should appear.</p> </td> </tr> </table>	<b>OSD LOCKED/ UNLOCKED</b>	<p data-bbox="644 253 1227 415">This function allows you to lock the current control settings, so that they cannot be inadvertently changed. Press and hold the MENU button for several seconds. The message "OSD LOCKED" should appear. You can unlock the OSD controls at any time by pushing the MENU button for several seconds. The message "OSD UNLOCKED" should appear.</p>
<b>OSD LOCKED/ UNLOCKED</b>	<p data-bbox="644 253 1227 415">This function allows you to lock the current control settings, so that they cannot be inadvertently changed. Press and hold the MENU button for several seconds. The message "OSD LOCKED" should appear. You can unlock the OSD controls at any time by pushing the MENU button for several seconds. The message "OSD UNLOCKED" should appear.</p>		
SUPER ENERGY SAVING Button	Use this button to enter SUPER ENERGY SAVING menu.For more information.(See p.17)		
3D	3D Mode [3D/2D]. (See p.18)		
INPUT	<p data-bbox="395 523 701 548">You can choose the input signal.</p> <ul data-bbox="401 548 1227 639" style="list-style-type: none"> <li data-bbox="401 548 1227 593">• When two input signals are at least are connected, you can select the input signal (DVI/HDMI) you want.</li> <li data-bbox="401 593 1227 639">• When only one signal is connected, it is automatically detected. The default setting is DVI-D.</li> </ul>		
EXIT	Exit the OSD(On Screen Display).		
⏻ (Power Button)	<p data-bbox="395 683 637 709">Turns the power on or off.</p> <table border="1" data-bbox="395 710 1234 784"> <tr> <td data-bbox="395 710 637 784"><b>Power Indicator</b></td> <td data-bbox="637 710 1234 784"> <p data-bbox="644 716 1227 780">The power indicator stays blue if the display is running properly (On Mode). If the display is in Sleep Mode, the power indicator blinks blue.</p> </td> </tr> </table>	<b>Power Indicator</b>	<p data-bbox="644 716 1227 780">The power indicator stays blue if the display is running properly (On Mode). If the display is in Sleep Mode, the power indicator blinks blue.</p>
<b>Power Indicator</b>	<p data-bbox="644 716 1227 780">The power indicator stays blue if the display is running properly (On Mode). If the display is in Sleep Mode, the power indicator blinks blue.</p>		

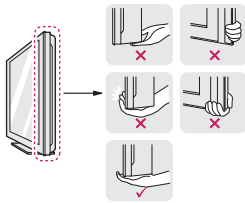
## Lifting and moving the Monitor

Please heed the following information when moving the monitor.

### CAUTION

- Avoid touching the screen at all times, as this may result in damage to the screen or pixels .

- It is recommended to move the Monitor in the box or packing material that the Monitor originally came in.
- Before moving or lifting the Monitor, disconnect the power cord and all cables.
- Hold the top and bottom of the Monitor frame firmly. Make sure not to hold the transparent part area.



- When holding the Monitor, the screen should face away from you to prevent the screen from scratches.



- When transporting the Monitor, do not expose the Monitor to jolts or excessive vibration.
- When transporting the Monitor, keep the Monitor upright, never turn the Monitor on its side, or tilt towards the left or right.

## Setting Up the Monitor

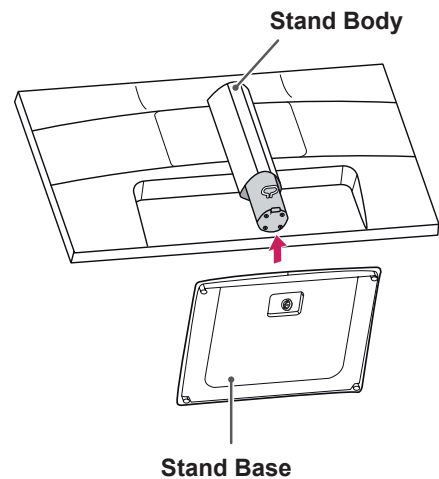
### Attaching the Stand Base

- 1 Place the monitor's screen face down.

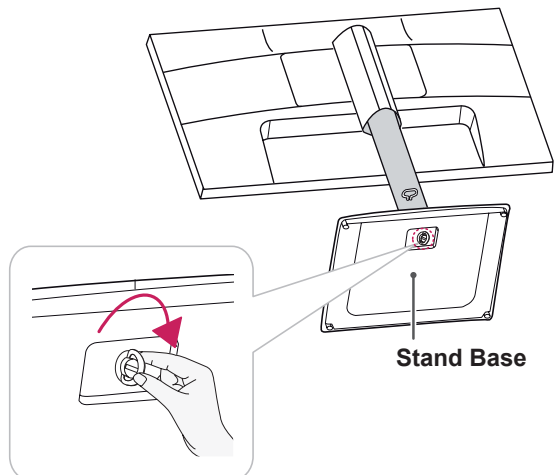
### CAUTION

- To protect the screen from scratches, cover the surface with a soft cloth.

- 2 Check the **position (at the front and rear)** of the stand body, then mount the **stand base** on the **stand body** as shown in the figure.

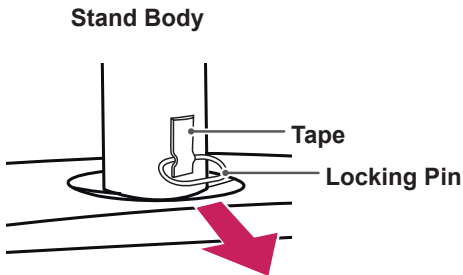


- 3 Turn the screw clockwise to secure the **stand base**.

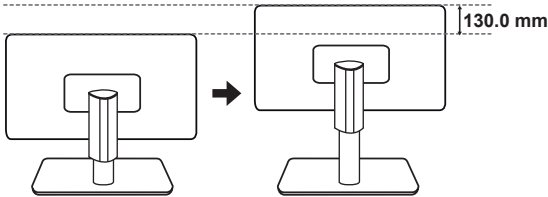


## Adjusting the stand height

- 1 Place the monitor mounted on the stand base in an upright position.
- 2 Remove the **tape** attached at the bottom rear of the **stand body**, then pull out the **locking pin**.



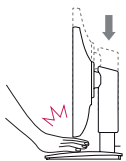
- 3 The height can be adjusted up to **130 mm**.



### CAUTION

- Once the pin is removed, it is not necessary to re-insert it to adjust the height.

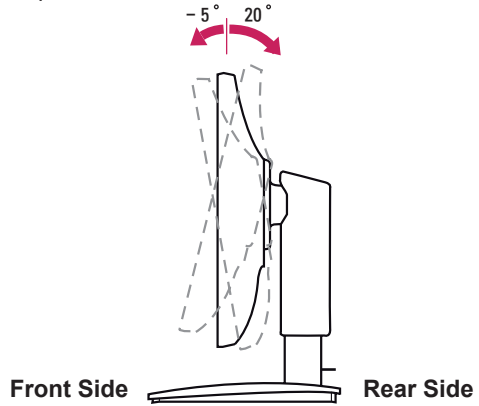
### WARNING



- Do not put your fingers or hand between the screen and the base (chassis) when adjusting the screen's height.

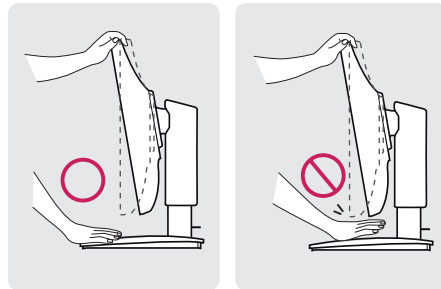
## Adjusting the angle

- 1 Place the monitor mounted on the stand base in an upright position.
- 2 Adjust the angle of the screen. The angle of the screen can be adjusted up to 20° forwards and 5° backwards for a comfortable viewing experience.

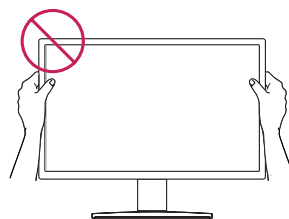


### WARNING

- To avoid injury to the fingers when adjusting the screen, do not hold the lower part of the monitor's frame as illustrated below.

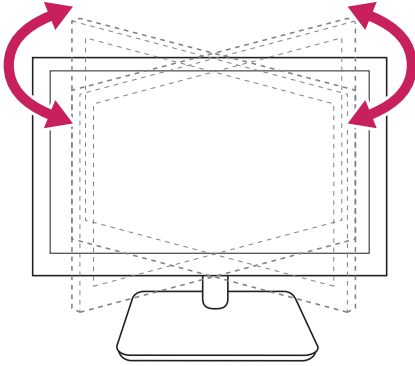


- Be careful not to touch or press the screen area when adjusting the angle of the monitor.



## Swivel stand

- 1 Swivel 45 degrees and adjust the angle of the Monitor to suit your view.

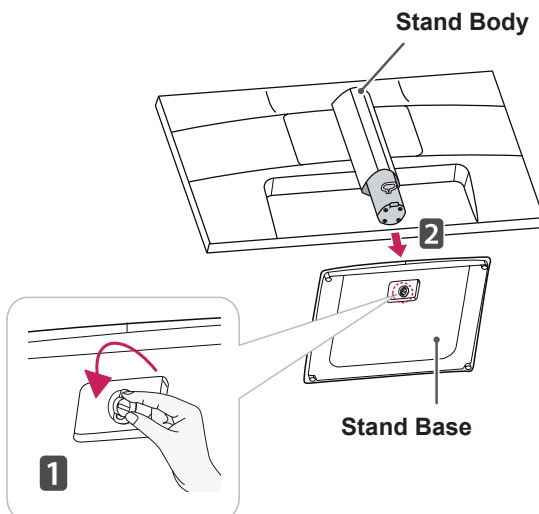


### ! CAUTION

- The components appearing in the illustrations may look different from the actual product.
- Do not carry the monitor upside-down as this may cause it to fall off its stand, resulting in damage or injury.
- To avoid damaging the screen when lifting or moving the monitor, only hold the stand or the plastic cover. This avoids putting unnecessary pressure on the screen.
- Only remove the tape and the locking pin when the monitor is mounted on the stand base and is in an upright position. Otherwise, the stand body may protrude, which may lead to injury.

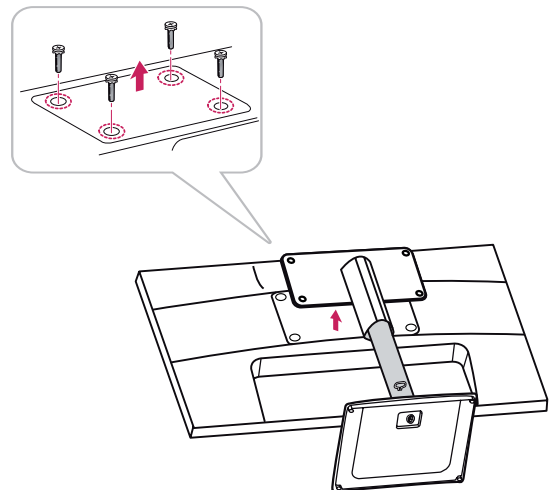
## Detaching the stand base

- 1 Place the monitor's screen face down. To protect the screen from scratches, cover the surface with a soft cloth.
- 2 Turn the screw in the stand base counterclockwise. Detach the **stand base** from the **stand body**.



## Detaching the stand body

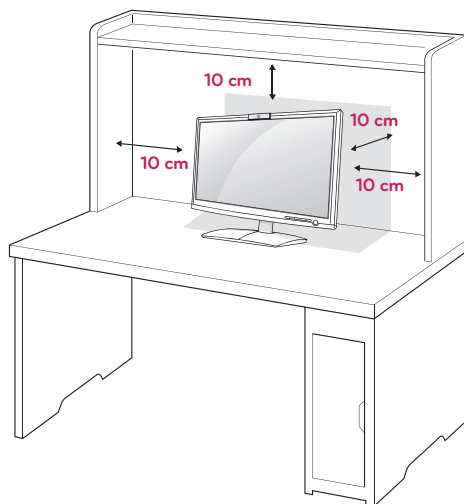
- 1 Place the monitor's screen face down. To protect the screen from scratches, cover the surface with a soft cloth.
- 2 Using a screwdriver, remove the four screws and detach the stand from the monitor.



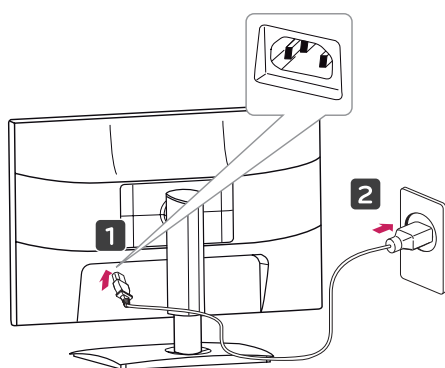



## Mounting on a table

- 1 Lift and tilt the Monitor into its upright position on a table.  
Leave a 10 cm (minimum) space from the wall for proper ventilation.



- 2 Connect the **Power Cord** to a wall outlet.



- 3 Press  (Power) button on the front switch panel to turn the power on.



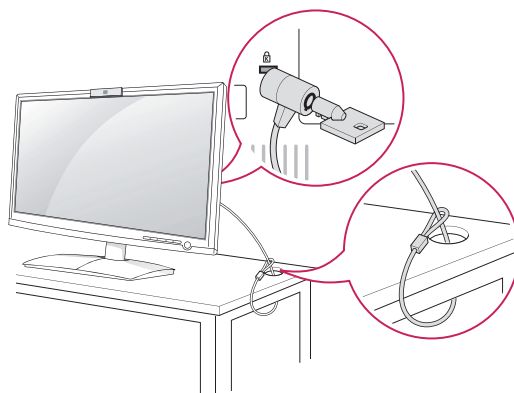
### CAUTION

- Unplug the power cord before moving the Monitor to another location. Otherwise electric shock may occur.

### Using the Kensington security system

The Kensington security system connector is located at the back of the Monitor. For more information of installation and using, refer to the manual supplied with the Kensington security system or visit <http://www.kensington.com>.

Connect the Kensington security system cable between the Monitor and a table.

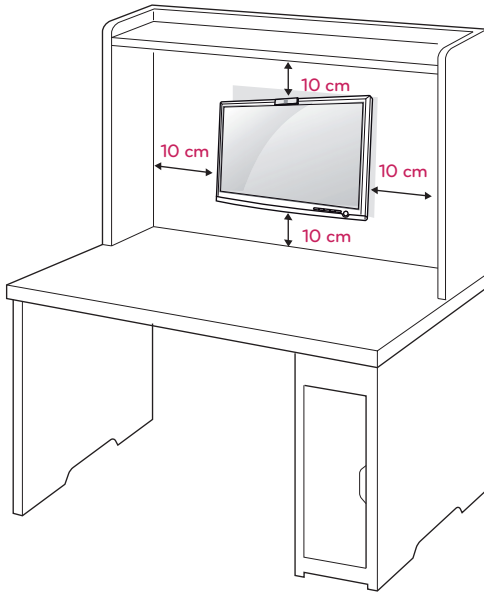


### NOTE

- The Kensington security system is optional. You can obtain it from most electronics stores.

## Mounting on a wall

For proper ventilation, allow a clearance of 10 cm on each side and from the wall. Detailed instructions are available from your dealer, see the optional Tilt Wall Mounting Bracket Installation and Setup Guide.

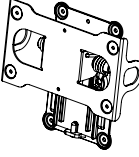


If you intend to mount the Monitor to a wall, attach the Wall mounting interface (optional parts) to the back.

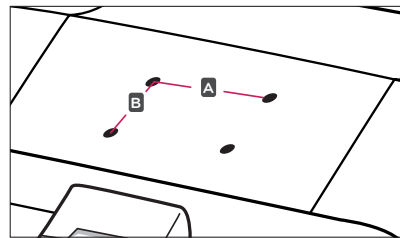
When you install the Monitor using a wall mounting interface (optional parts), attach it carefully so it will not drop.

- 1 Please, Use screws and a mount interface in accordance with VESA Standards.
- 2 If you use screws longer than standard, the monitor might be damaged internally.
- 3 If you use improper screws, the product might be damaged and drop from mounted position. In this case, LG Electronics is not responsible for damage.
- 4 VESA compatible only with respect to screw mounting interface dimensions and mounting screw specifications.

- 5 Please use VESA standard as below.
  - 784.8 mm (30.9 inch) and under
    - \* Wall Mount Pad Thickness : 2.6 mm
    - \* Screw :  $\Phi$  4.0 mm x Pitch 0.7 mm x Length 10 mm
  - 787.4 mm (31.0 inch) and above
    - \* Please use VESA standard wall mount pad and screws.

Model	D2500N
VESA (A x B)	200 x 100
Standard screw	M4
Number of screws	4
Wall mount bracket (optional)	RW240 

- VESA (A x B)



**CAUTION**

- Disconnect the power cord first, and then move or install the Monitor. Otherwise electric shock may occur.
- If you install the Monitor on a ceiling or slanted wall, it may fall and result in severe injury.
- Use only an authorized LG wall mount and contact the local dealer or qualified personnel.
- Do not over tighten the screws as this may cause damage to the Monitor and void your warranty.
- Use only screws and wall mounts that meet the VESA standard. Any damages or injuries by misuse or using an improper accessory are not covered by the warranty.

**NOTE**

- Only use screws that are listed on the VESA standard screw specifications.
- The wall mount kit will include an installation manual and necessary parts.
- The wall mount bracket is optional. You can obtain additional accessories from your local dealer.
- The length of screws may differ depending on the wall mount. Be sure to use the proper length.
- For more information, refer to the instructions supplied with the wall mount.

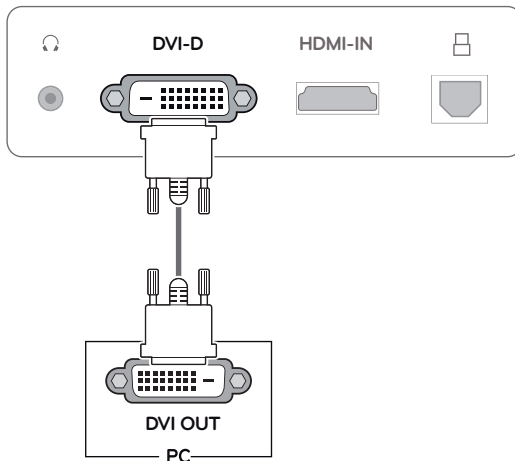
# USING THE MONITOR

## Connecting to a PC

- Your Monitor supports Plug & Play\*.  
\*Plug & Play: This is the function that allows a PC to use the monitor without installing a driver.

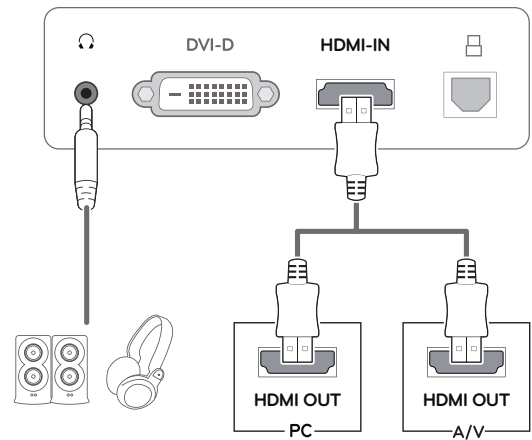
## DVI-D connection

Transmits a digital video signal from your PC to the Monitor. Connect the PC and the Monitor with a DVI cable as shown in the following illustrations.



## HDMI connection

Transmits the digital video and audio signals from your PC or A/V to the Monitor. Connect the PC or A/V and the Monitor with the HDMI cable as shown in the following illustrations. When the HDMI cable is connected, you can listen to sound through headphones, earphones or an external speaker.



### ! NOTE

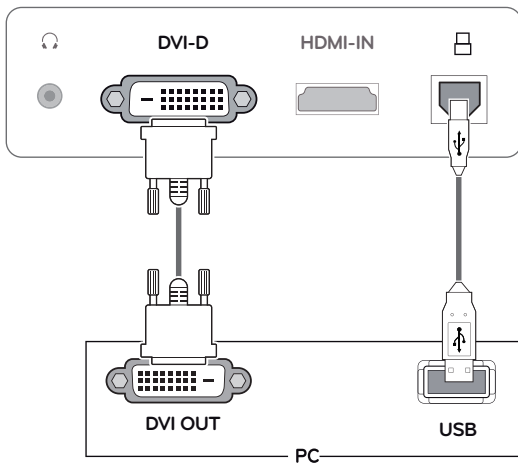
- If you use HDMI PC, it can cause a compatibility problem.
- Sound output is available only in HDMI input mode. The quality of the sound may be reduced depending on the performance of headphones, earphones or external speaker.

## Connecting to a PC (3D Mode)

- Your Monitor supports Plug & Play\*.
- \*Plug & Play: This is the function that allows a PC to use the monitor without installing a driver.

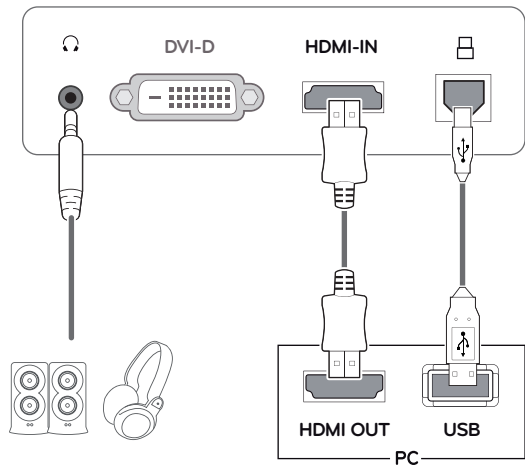
### DVI-D connection

Transmits a digital video signal from your PC to the Monitor. Connect the PC and the Monitor with a DVI cable and USB cable as shown in the following illustrations.



### HDMI connection

Transmits the digital video and audio signals from your PC or A/V to the Monitor. Connect the PC or A/V and the Monitor with the HDMI cable and USB cable as shown in the following illustrations. When the HDMI cable is connected, you can listen to sound through headphones, earphones or an external speaker.

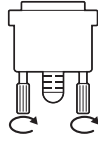


#### ! NOTE

- If you use HDMI PC, it can cause a compatibility problem.
- Sound output is available only in HDMI input mode. The quality of the sound may be reduced depending on the performance of headphones, earphones or external speaker.

**CAUTION**

- Connect the signal input cable and tighten it by turning the screws clockwise.
- Do not press the screen with your finger for a long time as this may result in temporary distortion on the screen.
- Avoid displaying a fixed image on the screen for a long period of time to prevent image burn. Use a screensaver if possible.

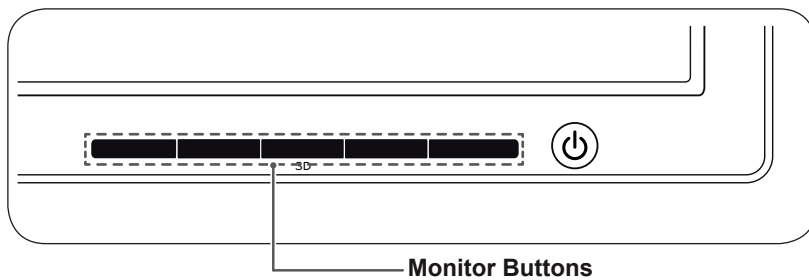
**NOTE**

- When you want to use two PC in our Monitor, please connect the signal cable(DVI-D/ HDMI) respectively in Monitor.
- When connecting the power cord to the outlet, use a grounded (3-hole) multi-socket or a grounded wall outlet.
- If you turn the Monitor on while it is cold, the screen may flicker. This is normal.
- Some red, green, or blue spots may appear on the screen. This is normal.

# CUSTOMIZING SETTINGS

## Accessing The Main Menus

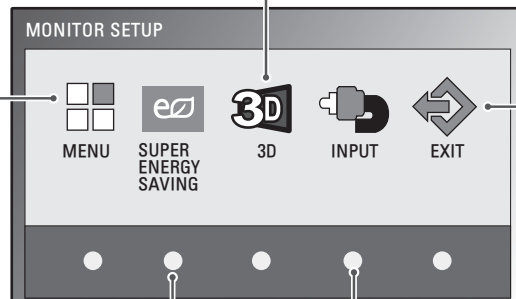
- 1 Press any button on the front of the Monitor to display the **MONITOR SETUP** OSD menu.
- 2 Press the desired menu item.
- 3 Change the value of the menu item by pressing the buttons on the front of the Monitor.  
To return to the upper menu or set other menu items, use the up arrow (↑) button.
- 4 Select **EXIT** to leave the OSD menu.



**MENU** (See p.16)  
Sets the screen options.

**3D** (See p.18)  
Sets the 3D mode.

**EXIT**  
Exits the OSD menu.



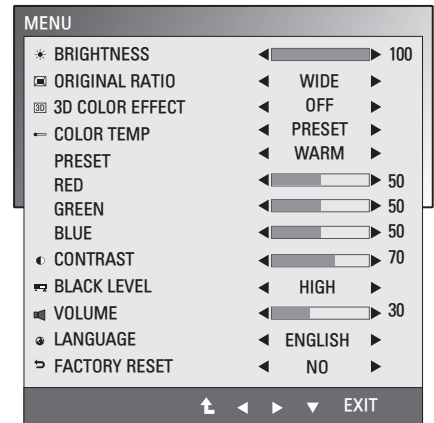
**SUPER ENERGY SAVING**  
(See p.17)

**INPUT**  
Sets the external input.

## Customizing Settings

### Menu Settings

- 1 Press any button on the front of the Monitor to display the **MONITOR SETUP** OSD menu.
- 2 Press the **MENU** button to display the options in the OSD menu.
- 3 Set the options by pressing the buttons on the front of the Monitor.
- 4 Select **EXIT** to leave the OSD menu.  
To return to the upper menu or set other menu items, use the up arrow (↑) button.



The available Menu settings are described below.

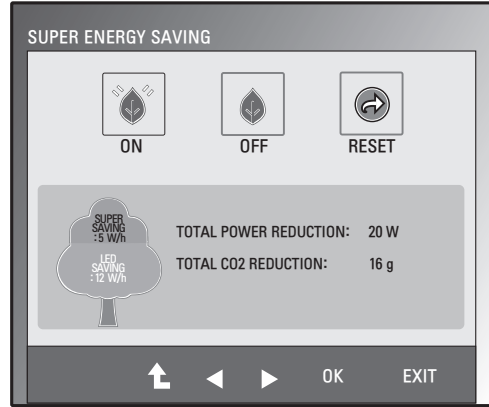
Menu	Digital	HDMI	Description
<b>BRIGHTNESS</b>	o	o	Adjusts the brightness of the screen.
<b>ORIGINAL RATIO</b>	o	o	<b>WIDE</b>
			Switch to full screen mode according to input image signal.
<b>3D COLOR EFFECT</b>	o	o	<b>ORIGINAL</b>
			Change the input image signal ratio to original. * This function works only if input resolution is lower than Monitor ratio (16:9).
<b>COLOR TEMP</b>	o	o	<b>PRESET</b>
			Select the screen color. • <b>WARM</b> : Set the screen to warm color temperature (more red). • <b>MEDIUM</b> : Set the screen to medium color temperature. • <b>COOL</b> : Set the screen to cool color temperature (More blue).
			<b>USER</b>
			• <b>RED</b> : Set your own red color levels. • <b>GREEN</b> : Set your own green color levels. • <b>BLUE</b> : Set your own blue color levels.
<b>CONTRAST</b>	o	o	Adjusts the contrast of the screen.
<b>BLACK LEVEL</b> (Only supported in HDMI mode)	x	o	You can set the offset level. If you select 'HIGH', the screen will be bright and if you select 'LOW', the screen will be dark. • <b>Offset</b> : As the criteria for video signal, it is the darkest screen the monitor can show.
<b>VOLUME</b> (Only supported in HDMI mode)	x	o	Adjusts the volume level.
<b>LANGUAGE</b>	o	o	Changes the menu language.
<b>FACTORY RESET</b>	o	o	Returns the monitor to original factory settings.

- **Digital**: DVI-D(Digital signal) input.
- **HDMI**: HDMI(Digital signal) input.



## SUPER ENERGY SAVING Settings

- 1 Press any button on the front of the Monitor to display the **MONITOR SETUP** OSD menu.
- 2 Press the **MENU** button to display the options in the OSD menu.
- 3 Select **SUPER ENERGY SAVING** by pressing the buttons on the front of the Monitor and set the options.
- 4 Select **EXIT** to leave the OSD menu.  
To return to the upper menu or set other menu items, use the up arrow (↑) button.



The SUPER ENERGY SAVING picture settings are described below.

Menu	Description
<b>ON</b>	Enables SUPER ENERGY SAVING you can save energy with this energy-efficient function.
<b>OFF</b>	Disables SUPER ENERGY SAVING.
<b>RESET</b>	Resets the values of total energy consumption reduction and CO2 emission reduction estimates.

### ! NOTE

- **TOTAL POWER REDUCTION:** How much power is saved while using the monitor.
- **TOTAL CO2 REDUCTION:** How much CO2 was saved by reducing the power.
- **SAVING DATA(W/h)**

	634.4 mm (25 inch)
SUPER SAVING	5 W/h
LED SAVING	12 W/h

- Saving Data depends on the Panel. So, those values should be different from each panel and panel vendor.
- LG calculated these values by using “**broadcast video signal**”.
- LED Saving refers to how much power can be saved using a WLED Panel instead of CCFL panel.
- SUPER SAVING refers to how much power can be saved using the SUPER ENERGY SAVING function.

## Things you need to check before installing TriDef 3D

- Before you install the TriDef 3D program, connect the Glasses Free 3D monitor to your PC and reboot.
- If you are using two monitors or connecting a monitor to your laptop, set the LG 3D monitor as the default one and change the resolution to 1920 x 1080 to support the 3D function.
- Windows Media Player 11 is required for Windows XP to play 3d Movies.

## 3D Settings(Supported only in 3D mode — PC input)

- The 3D option must be selected to view 3D images.
- 1 When a 3D image appears after launching the **TriDef 3D program**, press the 3D button on the front of the monitor to display the 3D OSD.
  - 2 Set the options by pressing the buttons on the front of the Monitor.
  - 3 Select **EXIT** to leave the OSD menu.  
To return to the upper menu or set other menu items, use the up arrow (↑) button.



The available 3D settings are described below.

Menu	Description
3D	Enables 3D mode.
2D	Disables 3D mode.

### ! NOTE

- To view 3D images properly, enable the 3D option after connecting the USB cable to the monitor and PC and launching the TriDef 3D program.
- 3D is not supported when an external non-PC device and monitor are connected to the HDMI input.

# TROUBLESHOOTING

## Check the following before calling for service.

No image appears	
Is the power cord of the display connected?	<ul style="list-style-type: none"> <li>Check and see if the power cord is connected properly to the power outlet.</li> </ul>
Is the power indicator light on?	<ul style="list-style-type: none"> <li>Press the Power button.</li> </ul>
Is the power indicator flickering?	<ul style="list-style-type: none"> <li>If the display is in power saving mode, try moving the mouse or pressing any key on the keyboard to bring up the screen.</li> <li>Try to turn on the PC.</li> </ul>
Do you see an "OUT OF RANGE" message on the screen?	<ul style="list-style-type: none"> <li>This message appears when the signal from the PC (video card) is out of horizontal or vertical frequency range of the display. See the 'Specifications' section of this manual and configure your display again.</li> </ul>
Do you see a "CHECK SIGNAL CABLE" message on the screen?	<ul style="list-style-type: none"> <li>This message appears when the signal cable between your PC and your display is not connected. Check the signal cable and try again.</li> </ul>

Do you see a "OSD LOCKED" message on the screen?	
Do you see "OSD LOCKED" when you push MENU button?	<ul style="list-style-type: none"> <li>You can secure the current control settings, so that they cannot be inadvertently changed. You can unlock the OSD controls at any time by pushing the MENU button for several seconds: the message "OSD UNLOCKED" will appear.</li> </ul>

The screen retains an image.	
Does image sticking occur even when the monitor is turned off?	<ul style="list-style-type: none"> <li>Displaying a still image for a prolonged time may cause damage to the screen, resulting in the retention of the image.</li> <li>Use a screen saver to protect the screen when using the monitor for a prolonged period of time.</li> </ul>

The ORIGINAL RATIO menu cannot be enabled.	
Did you select a resolution lower than the screen resolution ratio?	<ul style="list-style-type: none"> <li>Adjust the scaling in the graphic card options.</li> <li>Scaling settings vary depending on the graphics card or operating system. Contact the graphics card manufacturer for more information.</li> </ul>

### NOTE

- **Vertical Frequency:** In order to display an image, the screen must be refreshed dozens of times per second like a fluorescent lamp. The number of times the screen is refreshed per second is called vertical frequency or refresh rate and is represented by Hz.
- **Horizontal Frequency:** The time it takes to display one horizontal line is called the horizontal cycle. The number of horizontal lines displayed in one second can be calculated by dividing one by the horizontal cycle. This is called horizontal frequency and is represented by kHz.
- Check **Control Panel ► Display ► Settings** and see if the frequency or the resolution were changed. If yes, readjust the video card to the recommend resolution.
- If the recommended resolution (optimal resolution) is not selected, letters may be blurred and the screen may be dimmed, truncated or biased. Make sure to select the recommend resolution.
- The configuration procedure may differ depending on your computer and/or operating system. Also, some video cards may not support certain resolutions. If this is the case, contact the computer or video card manufacturer for assistance.

Display image is incorrect	
Does the display color appear discolored (16 color)?	<ul style="list-style-type: none"> <li>Set the color to 24 bit (true color) or higher. In Windows, go to Control Panel &gt; Display &gt; Settings &gt; Color Quality.</li> </ul>
The screen color is mono or abnormal.	<ul style="list-style-type: none"> <li>Check if the signal cable is properly connected and use a screwdriver to fasten if necessary.</li> <li>Make sure the video card is properly inserted in the slot.</li> <li>Set the color setting higher than 24 bits (true color) at <b>Control Panel ► Settings</b>.</li> </ul>
The screen blinks.	<ul style="list-style-type: none"> <li>Check if the screen is set to interlace mode and if yes, change it to the recommend resolution.</li> </ul>

Do you see an "Unrecognized monitor, Plug&Play (VESA DDC) monitor found" message?	
Have you installed the display driver?	<ul style="list-style-type: none"> <li>Be sure to install the display driver from the display driver CD (or diskette) that comes with your display. Or, you can also download the driver from our web site: <a href="http://www.lg.com">http://www.lg.com</a>.</li> <li>Make sure to check if the video card supports Plug&amp;Play function.</li> </ul>

## TROUBLESHOOTING WHEN USING 3D MODE

Images displayed are not in 3D.	
If you view 3D images outside the optimal viewing angle or distance,	<ul style="list-style-type: none"> <li>The optimal viewing angle for this monitor is vertically up 30°, vertically down 10° and horizontal ±25°; the optimal viewing distance is between 70 cm to 80 cm (max. distance: 70 cm to 110 cm) from the monitor. When you view 3D images outside the optimal viewing angle or viewing distance, the images might appear overlapped or not be displayed properly in 3D.</li> </ul>
If you have not set the resolution,	<ul style="list-style-type: none"> <li>Please set the resolution of the monitor to the maximum (1920 x 1080 @ 60 Hz) in the display settings. The 3D software may not work properly if the resolution is not set to the maximum.</li> </ul>
If left/right images are reversed	<ul style="list-style-type: none"> <li>Sometimes, left/right images from the 3D content input are reversed. Change the left/right image sequence in the player or viewer settings of the 3D software. (Refer to the Installation Manual for 3D Viewing.)</li> </ul>
If ambient brightness is low	<ul style="list-style-type: none"> <li>A user's face must be detected through the camera attached to the front of the monitor front in order to enable 3D.</li> <li>Increase the ambient brightness for the camera display to detect the face.</li> </ul>
If the camera display for facial recognition is not shown	<ul style="list-style-type: none"> <li>Check the USB cable connection. If it is properly connected, change the USB port and reconnect.</li> <li>Carry out the following if you see the messages below in the PC:           <ul style="list-style-type: none"> <li>"This Device Can Perform Faster" (Windows 7)</li> <li>"HI-SPEED USB Device Attached To Non-HI-SPEED Hub" (Windows XP)</li> </ul>           » <b>Troubleshooting</b> <ol style="list-style-type: none"> <li>1. Change the USB port before plugging in.</li> <li>2. Use a rear USB port, rather than a front USB port, for the desktop computer.</li> </ol> </li> </ul>
Miscellaneous	<ul style="list-style-type: none"> <li>If you see doubled images or shaky images, re-run the TriDef 3D calibration program to adjust 3D images. (Refer to the Installation Manual for 3D Viewing.)</li> </ul>

I cannot see 3D but only 2D images.

- This monitor works both in 2D and 3D mode. You can view a video in 3D if it is made in 3D. If you try to view 2D images in 3D, they might not be displayed properly or you may experience poor picture quality.

#### If the 'TriDef 3D' couldn't work properly

- **TriDef 3D needs the following minimum system requirements to function properly.**
- **Minimum System Requirements for TriDef 3D**
  - » Intel® Core 2 Duo or AMD Athlon™ 64 X2 Dual-Core CPU or higher
  - » 1 GB RAM
  - » NVIDIA® GeForce® GTS 450 or AMD Radeon™ HD5750 or higher (latest graphics card driver required)
  - » 500 MB of free disk space
  - » Windows® XP (with latest service pack; 32-bit only), Windows® Vista (32-bit only) or Windows® 7 (32-bit or 64-bit)
  - » DirectX 9.0c compatible sound card
  - » Internet connection
  - » DVD-ROM Drive
  - » Network card
  - » DirectX 9.0c
- **Recommended System Requirements for TriDef 3D**
  - » Intel® Core i5 or AMD Phenom™ II X 4 CPU or higher
  - » 2 GB RAM
  - » NVIDIA® GeForce® GTS 260 or AMD Radeon™ HD5770 or higher (latest graphic card driver required)
  - » Windows® XP (with latest service pack; 32-bit only), Windows® Vista (32-bit only) or Windows® 7 (32-bit or 64-bit)
  - » DirectX 9.0c compatible sound card
  - » Internet connection
  - » DVD-ROM Drive
  - » Network card
  - » DirectX 9.0c



#### NOTE

- To run a 3D game properly, you need the minimum system requirements for the game.

# SPECIFICATIONS

<b>Display</b>	<b>Screen Type</b>	63.44 cm (25 inch) Flat Panel Active matrix-TFT LCD Anti-Glare coating Visible diagonal size: 63.44 cm
	<b>Pixel Pitch</b>	0.096 mm x 0.288 mm (Pixel Pitch)
<b>Sync Input</b>	<b>Horizontal Frequency</b>	30 kHz to 83 kHz (Automatic)
	<b>Vertical Frequency</b>	56 Hz to 75 Hz (DVI-D) 56 Hz to 61 Hz (HDMI)
	<b>Input Form</b>	Separate Sync. Digital
<b>Video Input</b>	<b>Signal Input</b>	DVI-D Connector / HDMI Connector
	<b>Input Form</b>	Digital
<b>Resolution</b>	<b>Max</b>	1920 x 1080 @ 60 Hz
	<b>Recommend</b>	1920 x 1080 @ 60 Hz
<b>Plug &amp; Play</b>	DDC 2B(Digital,HDMI)	
<b>Power Consumption</b>	On Mode : 40 W(Typ.) Sleep Mode ≤ 0.5 W Off Mode ≤ 0.5 W	
<b>Power Input</b>	100-240 V~ 50/60 Hz 0.7 A	
<b>Dimensions (Width x Height x Depth)</b>	<b>With Stand</b>	59.4 cm x 44.5 cm x 25.9 cm
	<b>Without Stand</b>	59.4 cm x 43.0 cm x 17.1 cm
<b>Weight</b>	9.23 kg	
<b>Tilt Range</b>	-5° to 20°	
<b>Environmental conditions</b>	<b>Operating Temperature</b>	0°C to 50 °C
	<b>Operating Humidity</b>	10 % to 90 %
	<b>Storage Temperature</b>	-20°C to 60 °C
	<b>Storage Humidity</b>	10 % to 90 % non-Condensing
<b>Stand Base</b>	Attached ( ), Detached (O)	
<b>Power cord</b>	Wall-outlet type	

Product specifications shown above may be changed without prior notice due to upgrade of product functions.

## Preset Modes (Resolution)

Display Modes (Resolution)	Horizontal Frequency(kHz)	Vertical Frequency(Hz)	Polarity(H/V)	
720 x 400	31.468	70.080	-/+	*
640 x 480	31.469	59.940	-/-	
640 x 480	37.500	75.000	-/-	*
800 x 600	37.879	60.317	+/+	
800 x 600	46.875	75.000	+/+	*
1024 x 768	48.363	60.000	-/-	
1024 x 768	60.023	75.029	+/+	*
1152 x 864	67.500	75.000	+/+	*
1280 x 1024	63.981	60.020	+/+	
1280 x 1024	79.976	75.035	+/+	*
1680 x 1050	65.290	59.954	-/+	
1920 x 1080	67.500	60.000	+/+	Recommend Mode

\* With this resolution, PC input is not supported when monitor is connected via HDMI.

## HDMI TIMING

Display Modes (Resolution)	Horizontal Frequency(kHz)	Vertical Frequency(Hz)	Limitation
480P	31.5	60	
720P	37.5	50	
720P	45	60	
1080i	28.12	50	
1080i	33.75	60	
1080P	56.25	50	
1080P	67.5	60	

## Indicator

Mode	LED Color
On Mode	Red
Sleep Mode	Blinking Red
Off Mode	Off

## SAFETY PRECAUTIONS

### Precautions to take when viewing 3D images

If you view 3D images from too close a distance, your eyesight may deteriorate.

If you view images in 3D for a long period of time, you may feel dizzy or experience blurred vision.

If you are pregnant, elderly, have heart problems, experience severe nausea or if you are under the influence of alcohol, we recommend that you do not view 3D images. This is because the 3D images can cause disorientation and confusion.

Put fragile or breakable objects away when viewing 3D images. Such objects may break, or cause personal injuries when you are startled by the realistic 3D images.

Parents should prevent children who are 5 years or younger from watching 3D images because viewing 3D images can be harmful to vision development.



### WARNING

Warning about photosensitivity seizures

Some users may have a seizure or other abnormal reactions when they are exposed to a flashing light or a particular pattern in a video game or film.

If anyone in your family has a history of epilepsy or has ever experienced any kind of seizure, please consult your doctor before viewing 3D images.

If you exhibit any of the symptoms listed below when viewing 3D images, stop viewing immediately and have a break.

- Dizziness, blurred vision or facial tics, involuntary movements, twitching, blackouts, confusion and disorientation. Please consult your doctor if such symptoms persist.

To prevent a photosensitivity seizure, please take the following precautions.

- Have a 5- to 15-minute break every hour.
- If your left and right eye sight is significantly different, correct the sight difference first.
- You should be able to see all of the screen at eye level.
- If you experience headaches, fatigue or dizziness, stop viewing and have a rest.
- Do not view 3D images when you are tired or ill.

### Precautions to take when viewing 3D images



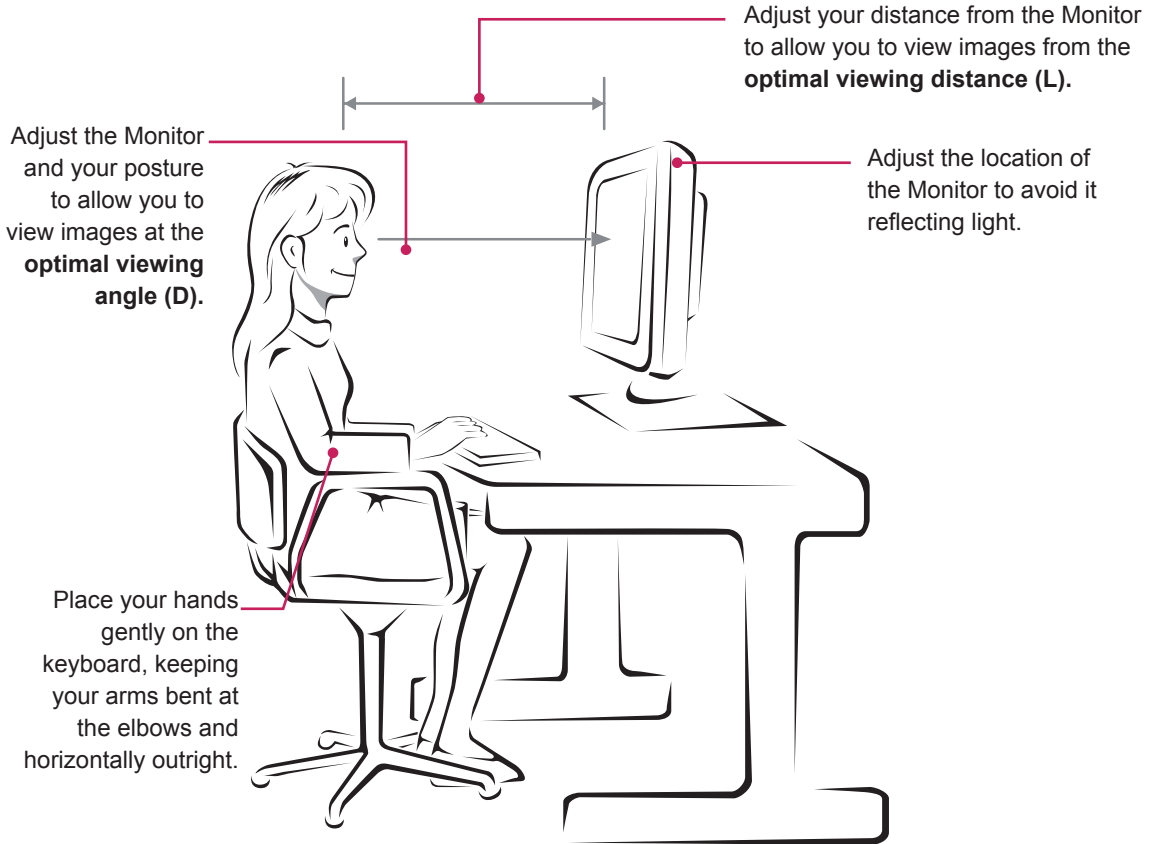
### CAUTION

Parents/guardians should monitor children's viewing of 3D images because they may not be used to the 3D viewing experience and lack knowledge on how to handle potential risks.



# PROPER POSTURE

## Proper posture for using the Monitor.



Mode	Size	Optimal viewing distance (L)	Optimal viewing angle (D)
When viewing 3D images	63.44 cm	Recommended: 70 cm to 80 cm Maximum: 70 cm to 110 cm	Vertical up: 30° Vertical down: 10° Horizontal: ±25°

## Precautions to take when viewing 3D images

- Watch your posture.
- Remain at the optimal viewing distance and angle when viewing 3D images. (Viewing 3D images too closely may strain your eyes, or you may experience dizziness.)

# LICENSES

Supported licenses may differ by model. For more information of the licenses, visit [www.lg.com](http://www.lg.com).



HDMI, the HDMI logo and High-Definition Multimedia Interface are trademarks or registered trademarks of HDMI Licensing LLC.





Make sure to read the Safety Precautions before using the product.

Keep the Owner's Manual (CD) in an accessible place for future reference.

The model and serial number of the SET is located on the back and one side of the SET. Record it below should you ever need service.

MODEL \_\_\_\_\_

SERIAL \_\_\_\_\_

ENERGY STAR is a set of power-saving guidelines issued by the U.S. Environmental Protection Agency (EPA).



As an ENERGY STAR Partner LGE U. S. A., Inc. has determined that this product meets the ENERGY STAR guidelines for energy efficiency.