



**LG**

Life's Good

ENGLISH

## OWNER'S MANUAL

# LED LCD MONITOR

Please read this manual carefully before operating your set and retain it for future reference.

LED LCD MONITOR MODELS

E2391VR

# CONTENTS

## 3 ASSEMBLING AND PREPARING

---

- 3 Unpacking
- 4 Parts and buttons
- 6 Setting up the Monitor set
- 6 - Mounting on a table

## 8 USING THE MONITOR SET

---

- 8 Connecting to a PC
- 8 - D-SUB connection
- 9 - HDMI connection
- 9 - DVI to HDMI connection

## 10 CUSTOMIZING SETTINGS

---

- 10 Accessing The Main Menus
- 11 Customizing Settings
- 11 - Menu Settings
- 13 - DUAL MONITOR Settings
- 13 - DUAL WEB Settings
- 14 - SUPER+ RESOLUTION Settings
- 14 - Volume Settings (Only supported in HDMI mode)
- 15 - SUPER ENERGY SAVING Settings

## 16 TROUBLESHOOTING

---

## 18 SPECIFICATIONS

---

- 19 Preset Modes (Resolution)
- 19 - PC(D-SUB / HDMI) Timing
- 19 - HDMI Timing
- 19 Indicator

## 20 PROPER POSTURE

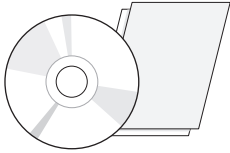
---

- 20 Proper posture for using the Monitor set.

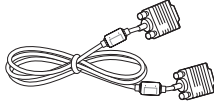
# ASSEMBLING AND PREPARING

## Unpacking

Check your product box for the following items. If there are any missing accessories, contact the local dealer where you purchased your product. The illustrations in this manual may differ from the actual product and accessories.

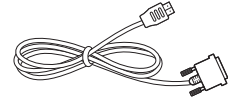


**CD(Owner's Manual) /  
Card**



**D-SUB Cable**

(This signal cable may be attached  
to this product before shipping out.)

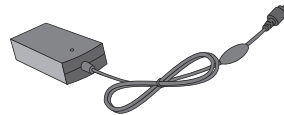


**HDMI to DVI Cable**

(This cable is not included in all  
countries.)



**Power Cord**



**AC-DC Adapter**



### CAUTION

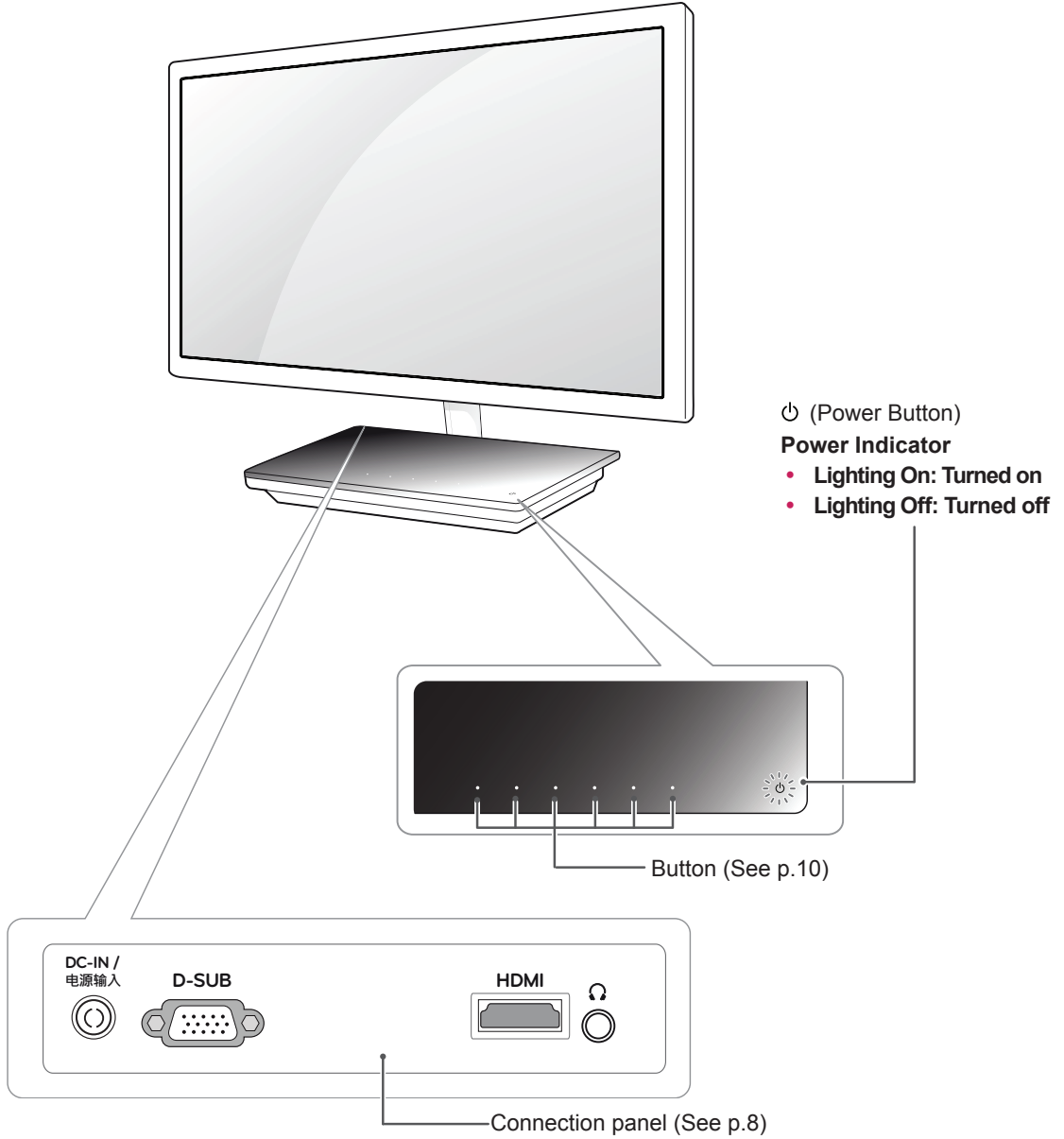
- Do not use any unapproved accessories to ensure the safety and product life span.
- Any damages or injuries by using unapproved accessories are not covered by the warranty.



### NOTE

- The accessories supplied with your product may vary depending on the model.
- Product specifications or contents in this manual may be changed without prior notice due to upgrade of product functions.
- User should use shielded signal interface cables (RGB cable) with ferrite cores to maintain standard compliance for the product.

# Parts and buttons

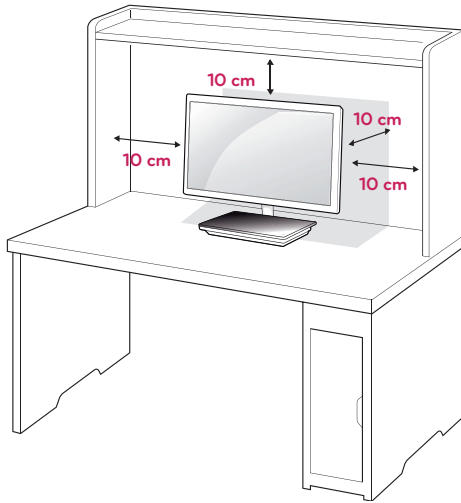


Button	Description				
MENU	Accesses the main menus.(See p.11)				
Left First Button	<table border="1"> <tr> <td data-bbox="393 253 633 440"><b>OSD LOCKED/ UNLOCKED</b></td> <td data-bbox="633 253 1232 440">This function allows you to lock the current control settings, so that they cannot be inadvertently changed. Press and hold the left first button for several seconds. The message "OSD LOCKED" should appear. You can unlock the OSD controls at any time by pushing the left first button for several seconds. The message "OSD UNLOCKED" should appear.</td> </tr> </table>	<b>OSD LOCKED/ UNLOCKED</b>	This function allows you to lock the current control settings, so that they cannot be inadvertently changed. Press and hold the left first button for several seconds. The message "OSD LOCKED" should appear. You can unlock the OSD controls at any time by pushing the left first button for several seconds. The message "OSD UNLOCKED" should appear.		
<b>OSD LOCKED/ UNLOCKED</b>	This function allows you to lock the current control settings, so that they cannot be inadvertently changed. Press and hold the left first button for several seconds. The message "OSD LOCKED" should appear. You can unlock the OSD controls at any time by pushing the left first button for several seconds. The message "OSD UNLOCKED" should appear.				
SUPER+ RESOLUTION	Use this button to enter SUPER+ RESOLUTION menu. For more information.(See p.14)				
SUPER ENERGY SAVING	Use this button to enter SUPER ENERGY SAVING menu. For more information.(See p.15)				
AUTO	<p>When adjusting your display settings, always press the AUTO button on the MONITOR SETUP OSD. (Only supported in Analog Mode)</p> <p>The best display mode : 1920 x1080</p>				
VOLUME (Only HDMI mode)	Adjust the volume of the Monitor set.(See p.14)				
INPUT	<p>You can choose the input signal.</p> <ul style="list-style-type: none"> <li>• When two input signals are at least are connected, you can select the input signal (D-SUB/HDMI) you want.</li> <li>• When only one signal is connected, it is automatically detected. The default setting is D-SUB.</li> </ul>				
EXIT	Exit the OSD(On Screen Display).				
⏻ (Power Button)	<table border="1"> <tr> <td colspan="2" data-bbox="393 817 633 850">Turns the power on or off.</td> </tr> <tr> <td data-bbox="393 850 633 929"><b>Power Indicator</b></td> <td data-bbox="633 850 1232 929">The power indicator stays white color if the display is running properly (On Mode). If the display is in Sleep Mode, the power indicator color is red.</td> </tr> </table>	Turns the power on or off.		<b>Power Indicator</b>	The power indicator stays white color if the display is running properly (On Mode). If the display is in Sleep Mode, the power indicator color is red.
Turns the power on or off.					
<b>Power Indicator</b>	The power indicator stays white color if the display is running properly (On Mode). If the display is in Sleep Mode, the power indicator color is red.				

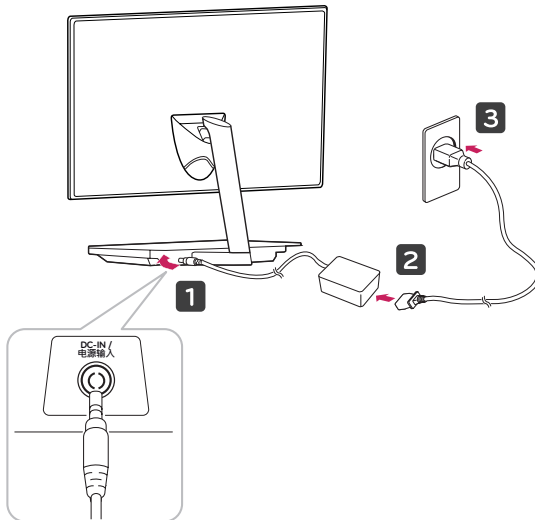
## Setting up the Monitor set

### Mounting on a table

- Lift and tilt the Monitor set into its upright position on a table.  
Leave a 10 cm (minimum) space from the wall for proper ventilation.



- Connect the AC-DC Adapter and Power Cord to a wall outlet.



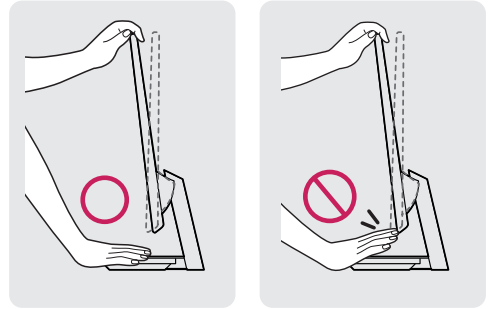
- Press Power button on the Stand base of the Monitor set to turn the power ON.

### CAUTION

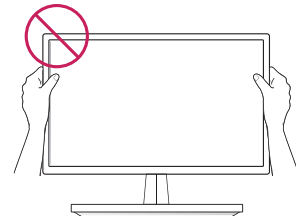
Disconnect the power cord first, and then move or install the Monitor set. Otherwise electric shock may occur.

### WARNING

When you adjust the angle, do not hold the bottom of the Monitor set frame as shown on the following illustration, as may injure your fingers.

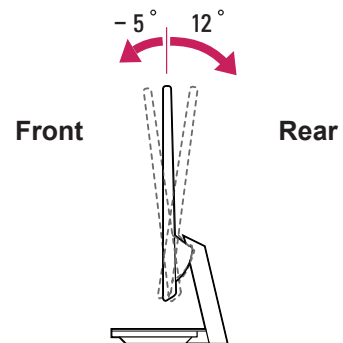


Do not touch or press the screen when adjusting the angle of the monitor.



### NOTE

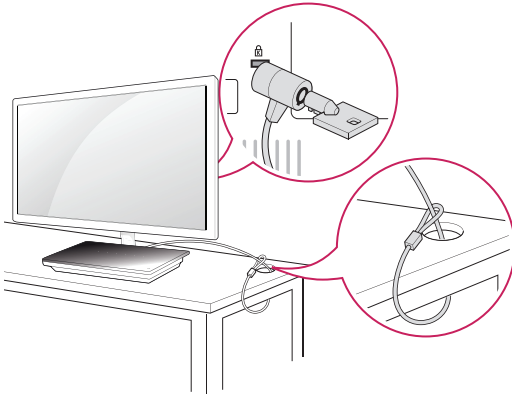
Tilt from +12 to -5 degrees up or down to adjust the angle of the Monitor set to suit your view.



### Using the Kensington security system

The Kensington security system connector is located at the back of the Monitor set. For more information of installation and using, refer to the manual supplied with the Kensington security system or visit <http://www.kensington.com>.

Connect the Kensington security system cable between the Monitor set and a table.



#### **!** NOTE

The Kensington security system is optional.  
You can obtain it from most electronics stores.

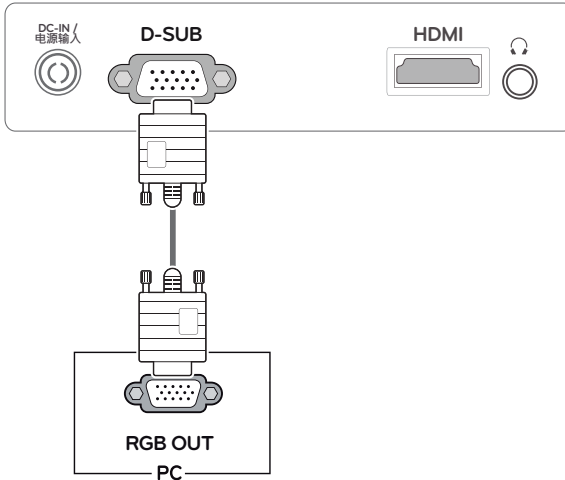
# USING THE MONITOR SET

## Connecting to a PC

- Your Monitor set supports Plug & Play\*.  
\*Plug & Play: A PC recognizes a connected device that users connect to a PC and turn on, without device configuration or user intervention.

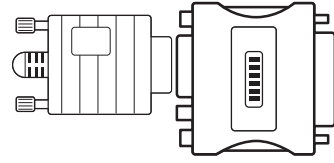
### D-SUB connection

Transmits analog video from your PC to the Monitor set. Connect the PC and the Monitor set with the supplied D-sub 15 pin signal cable as shown in the following illustrations.



### NOTE

- When using a D-Sub signal input cable connector for Macintosh

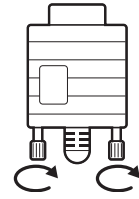


### Mac adapter

For Apple Macintosh use, a separate plug adapter is needed to change the 15 pin high density (3 row) D-SUB VGA connector on the supplied cable to a 15 pin 2 row connector.

### CAUTION

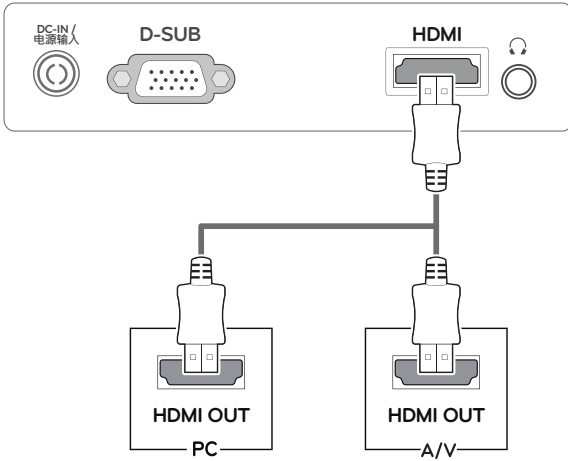
- Connect the signal input cable and tighten it by turning the screws clockwise.
- Do not press the screen with your finger for a long time as this may result in temporary distortion on the screen.
- Avoid displaying a fixed image on the screen for a long period of time to prevent image burn. Use a screensaver if possible.





## HDMI connection

Transmits the digital video and audio signals from your PC or A/V to the Monitor set. Connect the PC or A/V and the Monitor set with the HDMI cable as shown in the following illustrations.



### ! NOTE

- If you use HDMI PC, it can cause compatibility problem.
- When you want to use two PC in our Monitor, please connect the signal cable(D-SUB/HDMI) respectively in Monitor set.
- If you turn the Monitor set on while it is cold, the screen may flicker. This is normal.
- Some red, green, or blue spots may appear on the screen. This is normal.

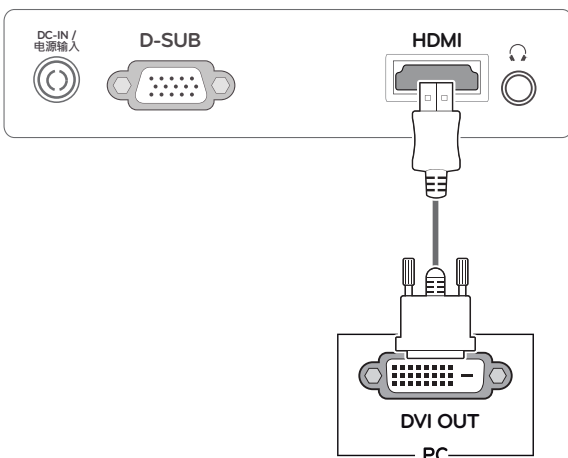
### Self Image Setting Function

Press the power button on the stand base of the Monitor set to turn the power on. When monitor power is turned on, the **"Self Image Setting"** Function is executed automatically. (Only supported in Analog Mode)



## DVI to HDMI connection

Transmits the digital video signal from your PC to the Monitor set. Connect the PC and the Monitor set with the DVI to HDMI cable as shown the following illustrations.



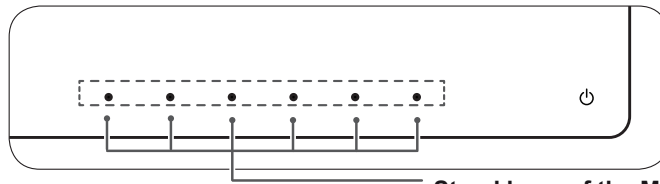
### ! NOTE

- **"Self Image Setting" Function.**  
This function provides the user with optimal display settings. When the user connects the monitor for the first time, this function automatically adjusts the display to optimal settings for individual input signals. (Only supported in Analog Mode)
- **'AUTO' Function.**  
When you encounter problems such as blurry screen, blurred letters, screen flicker or tilted screen while using the device or after changing screen resolution, press the AUTO function button to improve resolution. (Only supported in Analog Mode)

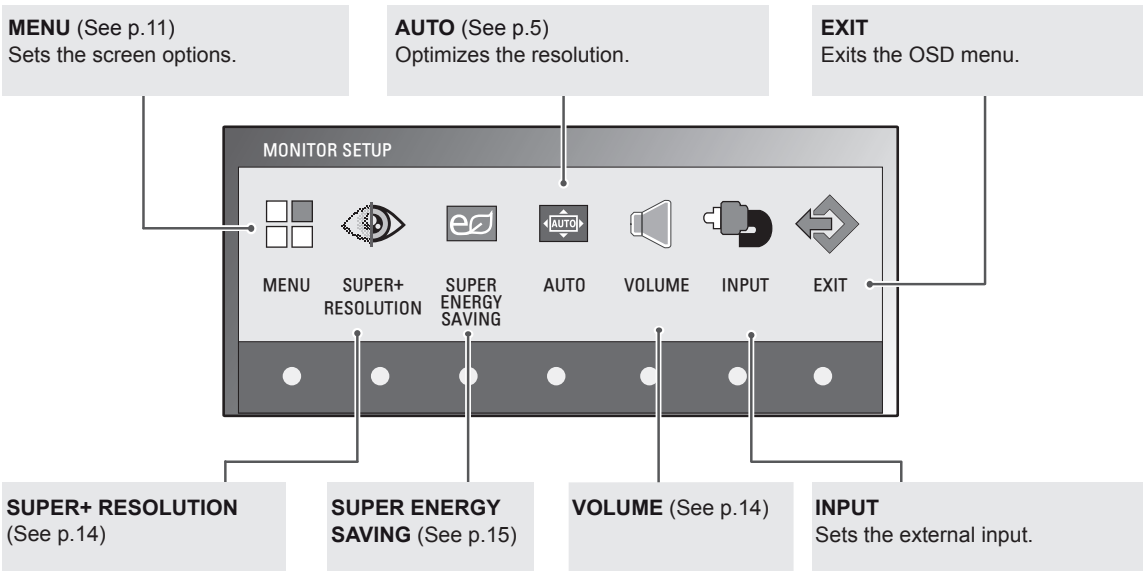
# CUSTOMIZING SETTINGS

## Accessing The Main Menu

- 1 Press any button on the stand base of the Monitor set to display the **MONITOR SETUP** OSD menu.
- 2 Press the desired menu item.
- 3 Change the value of the menu item by pressing the buttons on the stand base of the Monitor set. To return to the upper menu or set other menu items, use the up arrow (⬆) button.
- 4 Select **EXIT** to leave the OSD menu.



Stand base of the Monitor set Buttons



**NOTE**

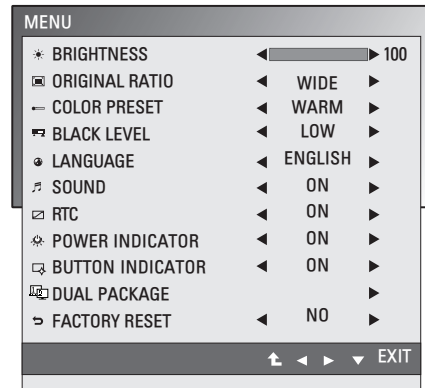
Different menu items are enabled depending on the type of input signal.

	Menu	SUPER+ RESOLUTION	SUPER ENERGY SAVING	AUTO	VOLUME	INPUT	EXIT
E2391VR	•	•	•	•	-	•	•
E2391VR (Only HDMI Mode)	•	•	•	-	•	•	•

# Customizing Settings

## Menu Settings

- 1 Press any button on the stand base of the Monitor set to display the **MONITOR SETUP** OSD menu.
- 2 Press the **MENU** button to display the options in the OSD menu.
- 3 Set the options by pressing the ◀ or ▶ or ▼ buttons.
- 4 Select **EXIT** to leave the OSD menu.  
To return to the upper menu or set other menu items, use the up arrow (⬆) button.



The available MENU settings are described below.

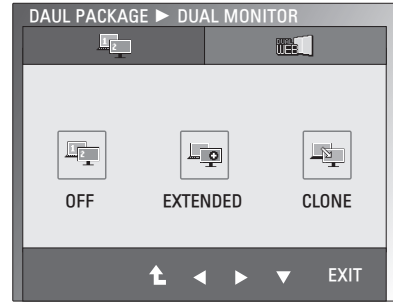
Menu	Analog	HDMI	Description
<b>BRIGHTNESS</b>	•	•	Adjusts the brightness of the screen.
<b>ORIGINAL RATIO</b>	•	•	<b>WIDE</b> Switch to full screen mode according to input image signal.
			<b>ORIGINAL</b> Change the input image signal ratio to original. * This function works only if input resolution is lower than Monitor set ratio (16:9).
<b>COLOR PRESET</b>	•	•	<b>PRESET</b> Select the screen color. • <b>WARM:</b> Set the screen to warm color temperature (more red). • <b>MEDIUM:</b> Set the screen to medium color temperature. • <b>COOL:</b> Set the screen to cool color temperature (More blue).
<b>BLACK LEVEL</b> (Only supported in HDMI mode)	-	•	You can set the offset level. If you select ' <b>HIGH</b> ', the screen will be bright and if you select ' <b>LOW</b> ', the screen will be dark. • <b>Offset:</b> As the criteria for video signal, it is the darkest screen the monitor can show.
<b>LANGUAGE</b>	•	•	Changes the menu language.
<b>SOUND</b>	•	•	Use this function to set the Buzzer sound to <b>ON</b> or <b>OFF</b> The Buzzer sound operates in below cases: • <b>DC power On/Off</b> • <b>AC power On</b> • <b>Monitor Setup OSD On/Off</b> • <b>MENU OSD On/Off</b> • <b>SUPER+ RESOLUTION OSD On/Off</b> • <b>DUAL PACKAGE OSD On/Off</b> • <b>SUPER ENERGY SAVING OSD On/Off</b> • <b>VOLUME OSD On/Off</b>

Menu	Analog	HDMI	Description
<b>RTC</b>	•	•	If you set <b>ON</b> , you enable the Response Time Control function and reduce the afterimage of the screen. If you set <b>OFF</b> , you disable the Response Time Control function and operate at panel response time.
<b>POWER INDICATOR</b>	•	•	Use this function to set the power indicator on the stand base of the monitor to <b>ON</b> or <b>OFF</b> . If you set <b>OFF</b> , it will be turned off. If you set <b>ON</b> at any time, the power indicator will automatically be turned on.
<b>BUTTON INDICATOR</b>	•	•	Use this function to set the button indicator on the stand base of the monitor to <b>ON</b> or <b>OFF</b> . If you set <b>OFF</b> , it will be turned off. If you set <b>ON</b> , it will be turned on.
<b>DUAL PACKAGE</b>	•	•	Move to DUAL PACKAGE function.
<b>FACTORY RESET</b>	•	•	Returns the monitor to original factory settings except " <b>LANGUAGE</b> ".

- **Analog:** D-SUB(Analog signal) input.
- **HDMI:** HDMI(Digital signal) input.

## DUAL MONITOR Settings

- 1 Press any button on the stand base of the Monitor set to display the **MONITOR SETUP** OSD menu.
- 2 Press the **MENU** button to display the options in the OSD Menu.
- 3 Select **DUAL PACKAGE** by pressing the ▼ button.
- 4 Enter to **DUAL PACKAGE** by pressing the ► button.
- 5 Set the options by pressing ▼ and then ◀ and ▶ buttons.
- 6 Select **EXIT** to leave the OSD menu.  
To return to the upper menu or set other menu items, use the up arrow (⬆) button.

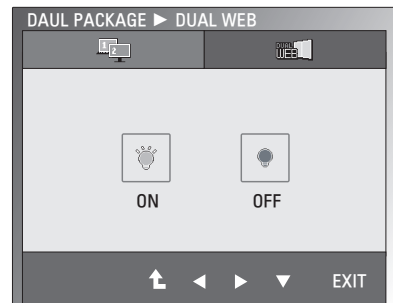


The available DUAL MONITOR settings are described below.

Menu	Description	
DUAL MONITOR	OFF	If select OFF,DUAL MONITOR off
	EXTENDED	By selecting EXETNDED,user can use secondary monitor as extended mode of primary monitor.
	CLONE	By selecting CLONE,user can use secondary monitor as clone mode of primary monitor.

## DUAL WEB Settings

- 1 Press any button on the stand base of the Monitor set to display the **MONITOR SETUP** OSD menu.
- 2 Press the **MENU** button to display the options in the OSD Menu.
- 3 Select **DUAL PACKAGE** by pressing the ▼ button.
- 4 Enter to **DUAL PACKAGE** by pressing the ► button.
- 5 Set the options by pressing ▼ and then ◀ and ▶ buttons.
- 6 Select **EXIT** to leave the OSD menu.  
To return to the upper menu or set other menu items, use the up arrow (⬆) button.



The available DUAL WEB settings are described below.

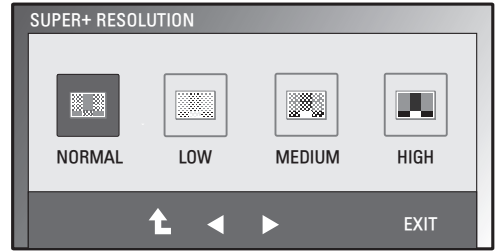
Menu	Description	
DUAL WEB	ON	Help user to browse web efficiently by dividing in half. Help to arrange and move windows on screen. Help user to control divided windows ratio.
	OFF	If select OFF,DUAL WEB is off.

**! NOTE**

- When monitor goes to Power Saving Mode with PC power saving option , on pressing any button and selecting DAUL PACKAGE option user can bring back monitor to normal mode.

## SUPER+ RESOLUTION Settings

- 1 Press any button on the stand base of the Monitor set to display the **MONITOR SETUP** OSD menu.
- 2 Press the **SUPER+ RESOLUTION** button to display the options in the OSD menu.
- 3 Set the options by pressing ◀ or ▶ buttons.
- 4 Select **EXIT** to leave the OSD menu.  
To return to the upper menu or set other menu items, use the up arrow (⬆) button.



The available SUPER+ RESOLUTION settings are described below.

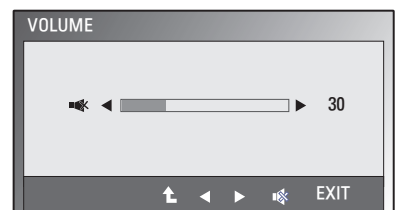
Menu	Description
<b>NORMAL</b>	Select this when you want to use the product in the most general using environment. In the General mode, the SUPER+ RESOLUTION is turned off.
<b>LOW</b>	When the user wants a natural video screen with soft image, it helps to get the optimized screen. It is effective for video with small movement or still image.
<b>MEDIUM</b>	When the user wants a comfortable video screen at the medium level between low and high mode, it helps to get the optimized screen. It is effective for UCC and SD level videos.
<b>HIGH</b>	When the user wants a sharp video screen with clear images, it helps to get the optimized screen. It is effective for high resolution video screens and games.

### ! NOTE

- Noise may exist according to SR(SUPER+ RESOLUTION) Mode, so enjoy the clear image by selecting SR(SUPER+ RESOLUTION) Mode according to the Contents.

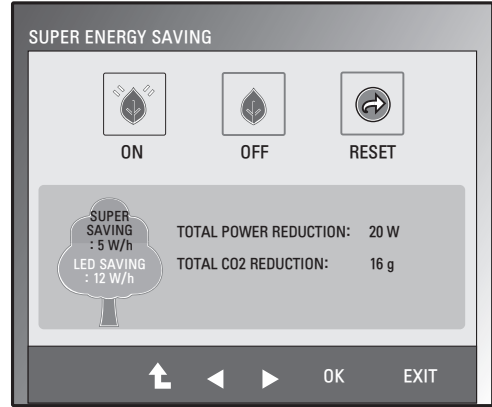
## Volume Settings (Only supported in HDMI mode)

- 1 Press any button on the stand base of the Monitor set to display the **MONITOR SETUP** OSD menu.
- 2 Press the **VOLUME** button to display the options in the OSD menu.
- 3 Adjust the **VOLUME** by pressing ◀ or ▶ buttons.
- 4 Select **EXIT** to leave the OSD menu.  
To return to the upper menu or set other menu items, use the up arrow (⬆) button.



## SUPER ENERGY SAVING Settings

- 1 Press any button on the stand base of the Monitor set to display the **MONITOR SETUP** OSD menu.
- 2 Press the **SUPER ENERGY SAVING** button to display the options in the OSD Menu.
- 3 Set the options by pressing ◀ or ▶ buttons.
- 4 Select **EXIT** to leave the OSD menu.  
To return to the upper menu or set other menu items, use the up arrow (⬆) button.



The available SUPER ENERGY SAVING settings are described below.

Menu	Description
<b>ON</b>	Enables SUPER ENERGY SAVING you can save energy with this energy-efficient function.
<b>OFF</b>	Disables SUPER ENERGY SAVING.
<b>RESET</b>	Resets the values of total energy consumption reduction and CO2 emission reduction estimates.

**NOTE**

- **TOTAL POWER REDUCTION:** How much power is saved while using the monitor.
- **TOTAL CO2 REDUCTION:** Change the TOTAL POWER REDUCTION to CO2.
- **SAVING DATA(W/h)**

	584 mm (23 inch)
SUPER SAVING	5 W/h
LED SAVING	12 W/h

- Saving Data depends on the Panel. So, those values should be different from each panel and panel vendor.
- LG calculated these values by using “broadcast video signal”.
- LED Saving means how much power can be saved using a WLED Panel instead of CCFL panel.
- SUPER SAVING means how much power can be saved using the SUPER ENERGY SAVING function.

# TROUBLESHOOTING

Check the following before calling for service.

No image appears	
Is the power cord of the display connected?	<ul style="list-style-type: none"> <li>Check and see if the power cord is connected properly to the power outlet.</li> </ul>
Is the power indicator light on?	<ul style="list-style-type: none"> <li>Press the Power button.</li> </ul>
Is the power indicator red?	<ul style="list-style-type: none"> <li>If the display is in power saving mode, try moving the mouse or pressing any key on the keyboard to bring up the screen.</li> <li>Try to turn on the PC.</li> </ul>
Do you see an "OUT OF RANGE" message on the screen?	<ul style="list-style-type: none"> <li>This message appears when the signal from the PC (video card) is out of horizontal or vertical frequency range of the display. See the 'Specifications' section of this manual and configure your display again.</li> </ul>
Do you see a "CHECK SIGNAL CABLE" message on the screen?	<ul style="list-style-type: none"> <li>This message appears when the signal cable between your PC and your display is not connected. Check the signal cable and try again.</li> </ul>

Do you see a "OSD LOCKED" message on the screen?	
Do you see "OSD LOCKED" when you push Left First Button?	<ul style="list-style-type: none"> <li>You can secure the current control settings, so that they cannot be inadvertently changed. You can unlock the OSD controls at any time by pushing the left first button for several seconds: the message "OSD UNLOCKED" will appear.</li> </ul>

Display image is incorrect	
Display Position is incorrect.	<ul style="list-style-type: none"> <li>Press the <b>AUTO</b> button to automatically adjust your display image to the ideal setting.</li> </ul>
On the screen background, vertical bars or stripes are visible.	<ul style="list-style-type: none"> <li>Press the <b>AUTO</b> button to automatically adjust your display image to the ideal setting.</li> </ul>
Any horizontal noise appearing in any image or characters are not clearly portrayed.	<ul style="list-style-type: none"> <li>Press the <b>AUTO</b> button to automatically adjust your display image to the ideal setting.</li> <li>Check <b>Control Panel ► Display ► Settings</b> and adjust the display to the recommended resolution or adjust the display image to the ideal setting. Set the color setting higher than 24 bits (true color).</li> </ul>



## CAUTION

- Check **Control Panel ► Display ► Settings** and see if the frequency or the resolution were changed. If yes, readjust the video card to the recommend resolution.
- If the recommended resolution (optimal resolution) is not selected, letters may be blurred and the screen may be dimmed, truncated or biased. Make sure to select the recommend resolution.
- The setting method can differ by computer and O/S (Operating System), and resolution mentioned above may not be supported by the video card performance. In this case, please ask to the computer or the video card manufacturer.



**The image on the screen is cut off/truncated.**

Is the image not shown in full on the screen? Or is a part of the image truncated?	<ul style="list-style-type: none"> <li>• Access the <b>MENU</b> and make sure that the <b>ORIGINAL RATIO</b> option is set to <b>WIDE</b>.</li> <li>• This option can be disabled for some resolutions. In this situation, check the video card's aspect ratio.</li> </ul>
--	--

**CAUTION**

- The setting method can differ by computer, O/S (Operating System).
- In this case, please ask to the computer or the video card manufacturer.

**Display image is incorrect**

The screen color is mono or abnormal.	<ul style="list-style-type: none"> <li>• Check if the signal cable is properly connected and use a screwdriver to fasten if necessary.</li> <li>• Make sure the video card is properly inserted in the slot.</li> <li>• Set the color setting higher than 24 bits (true color) at <b>Control Panel ► Settings</b>.</li> </ul>
The screen blinks.	<ul style="list-style-type: none"> <li>• Check if the screen is set to interlace mode and if yes, change it to the recommend resolution.</li> </ul>

**Do you see an "Unrecognized monitor, Plug&Play (VESA DDC) monitor found" message?**

Have you installed the display driver?	<ul style="list-style-type: none"> <li>• Be sure to install the display driver from the display driver CD (or diskette) that comes with your display. Or, you can also download the driver from our web site: <a href="http://www.lg.com">http://www.lg.com</a>.</li> <li>• Make sure to check if the video card supports Plug&amp;Play function.</li> </ul>
--	--

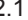
**The Audio function is not working**

Picture OK & No sound.	<ul style="list-style-type: none"> <li>• Check whether volume is "0".</li> <li>• Check sound muted.</li> <li>• HDMI cable installed properly.</li> <li>• Head phone cable installed properly.</li> <li>• Check sound format. Not support to compressed sound format.</li> </ul>
------------------------	---

**CAUTION**

- Check **Control Panel ► Sound ► Settings** and make sure the audio format is correct or not.
- The setting method can differ by computer, O/S (Operating System), and audio may not be supported by computer. In this case, please ask to the computer or the video card manufacturer.

# SPECIFICATIONS

<b>Display</b>	<b>Screen Type</b>	58.4 cm (23 inch) Flat Panel Active matrix-TFT LCD Anti-Glare coating Visible diagonal size: 58.4 cm
	<b>Pixel Pitch</b>	0.265 mm x 0.265 mm (Pixel Pitch)
<b>Sync Input</b>	<b>Horizontal Frequency</b>	30 kHz to 83 kHz (Automatic)
	<b>Vertical Frequency</b>	56Hz to 75Hz (D-SUB, DVI to HDMI) 56Hz to 61Hz (HDMI)
	<b>Input Form</b>	Separate Sync. HDMI
<b>Video Input</b>	<b>Signal Input</b>	15 pin D-SUB Connector / HDMI (TYPE - A) Connector
	<b>Input Form</b>	RGB Analog (0.7 Vp-p/ 75 ohm), HDMI
<b>Resolution</b>	<b>Max</b>	D-SUB(Analog) : 1920 x 1080 @ 60 Hz HDMI(Digital) : 1920 x 1080 @ 60 Hz
	<b>Recommend</b>	VESA 1920 x 1080 @ 60 Hz
<b>Plug &amp; Play</b>	DDC 2B(Analog, HDMI)	
<b>Power Consumption</b>	On Mode : 30 W(Typ.) Sleep Mode ≤ 0.5 W Off Mode ≤ 0.5 W	
<b>Power Input</b>	19 V  2.1 A	
<b>AC-DC Adapter</b>	Type EADP-40LB B, manufactured by Delta Electronics	
<b>Dimensions (Width x Height x Depth)</b>	<b>With Stand</b>	53.19 cm x 18.58 cm x 41.53 cm
	<b>Weight</b>	3.5 kg
<b>Tilt Range</b>	-5° to 12°	
<b>Environmental conditions</b>	<b>Operating Temperature</b>	10°C to 35 °C
	<b>Operating Humidity</b>	20 % to 80 % non-Condensing
	<b>Storage Temperature</b>	-10°C to 60 °C
	<b>Storage Humidity</b>	5 % to 90 % non-Condensing
<b>Stand Base</b>	Attached (O), Detached ( )	
<b>Power cord</b>	Wall-outlet type	

Product specifications shown above may be changed without prior notice due to upgrade of product functions.

## Preset Modes (Resolution)

### PC(D-SUB / HDMI) Timing

Display Modes (Resolution)	Horizontal Frequency(kHz)	Vertical Frequency(Hz)	Polarity(H/V)	
720 x 400	31.468	70	-/+	
640 x 480	31.469	60	-/-	
640 x 480	37.500	75	-/-	
800 x 600	37.879	60	+/+	
800 x 600	46.875	75	+/+	
1024 x 768	48.363	60	-/-	
1024 x 768	60.123	75	+/+	
1152 x 864	67.500	75	+/+	
1280 x 1024	63.981	60	+/+	
1280 x 1024	79.976	75	+/+	
1680 x 1050	65.290	60	-/+	
1920 x 1080	67.500	60	+/+	Recommend Mode

### HDMI Timing

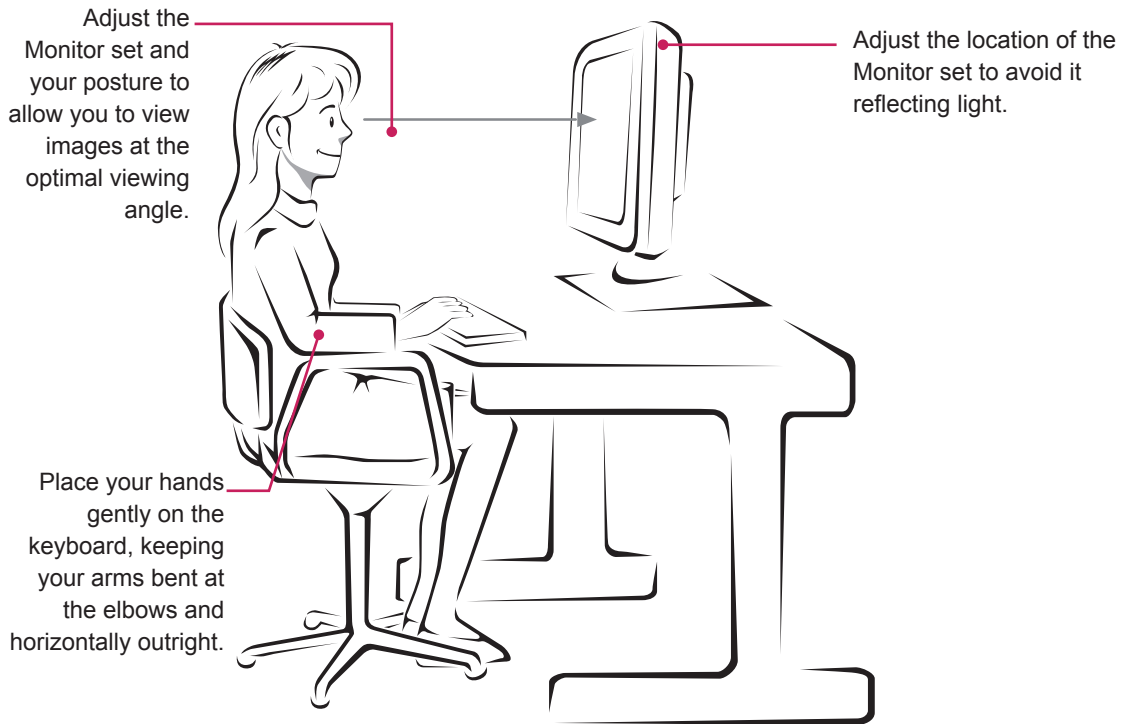
Display Modes (Resolution)	Horizontal Frequency(kHz)	Vertical Frequency(Hz)
480P	31.50	60
576P	31.25	50
720P	37.50	50
720P	45.00	60
1080i	28.12	50
1080i	33.75	60
1080P	56.25	50
1080P	67.50	60

## Indicator

Mode	LED Color
On Mode	White
Sleep Mode	Red
Off Mode	Off

# PROPER POSTURE

## Proper posture for using the Monitor set.



Adjust the Monitor set and your posture to allow you to view images at the optimal viewing angle.

Adjust the location of the Monitor set to avoid it reflecting light.

Place your hands gently on the keyboard, keeping your arms bent at the elbows and horizontally outright.



Make sure to read the Safety Precautions before using the product.

Keep the Owner's Manual (CD) in an accessible place for future reference.

The model and serial number of the SET is located on the back and one side of the SET.

Record it below should you ever need service.

MODEL \_\_\_\_\_

SERIAL \_\_\_\_\_

ENERGY STAR is a set of power-saving guidelines issued by the U.S. Environmental Protection Agency (EPA).



As an ENERGY STAR Partner LGE U. S. A., Inc. has determined that this product meets the ENERGY STAR guidelines for energy efficiency.