



**LG**

Life's Good

ENGLISH

# OWNER'S MANUAL

# MONITOR TV

Please read this manual carefully before operating the  
your set and retain it for future reference.

## MONITOR TV MODELS

M2241A

M2341A

# CONTENTS

## 4 ASSEMBLING AND PREPARING

- 4 Unpacking
- 5 Parts and buttons
- 6 Lifting and moving the Monitor set
- 6 Setting up the Monitor set
  - 6 - Attaching the Stand Base
  - 6 - Detaching the Stand Base and Body
- 7 - Mounting on a table
- 8 - Mounting on a wall

## 9 REMOTE CONTROL

### 11 USING THE MONITOR SET

- 11 Connecting to a PC
  - 11 - RGB connection
- 12 Adjusting the screen
  - 12 - Selecting an image mode
  - 12 - Customizing image options
- 13 - Customizing PC display options
- 13 Adjusting the sound
  - 13 - Selecting a sound mode
  - 13 - Customizing sound options

### 14 WATCHING TV

- 14 Connecting an antenna or cable
  - 14 - Connecting an antenna or basic cable
  - 14 - Connecting with a cable box
- 15 Accessing the TV for the first time
- 16 Watching TV
- 16 Managing programmes
  - 16 - Automatically setting up programmes
  - 16 - Manually setting up programmes
  - 16 - Editing your programme list
- 17 - Selecting the programme list
- 17 - Favourite programme setup
- 18 Using additional options
  - 18 - Adjusting aspect ratio

- 19 - Using the input list
- 19 - On-screen menu language
- 19 - Locking the buttons on the Monitor set

## 20 ENTERTAINMENT

- 20 Using integrated media features
  - 20 - Connecting USB storage devices
- 21 - Browsing files
- 22 - Viewing Photos
- 23 - Listening to Music

## 25 CUSTOMIZING SETTINGS

- 25 Accessing main menus
- 26 Customizing settings
  - 26 - SETUP settings
  - 27 - PICTURE settings
  - 29 - AUDIO settings
  - 31 - TIME settings
  - 32 - OPTION settings
- 33 - USB settings

## 34 MAKING CONNECTIONS

- 34 Connection overview
- 36 Connecting to a Camcorder, Camera, HD receiver, DVD or VCR player
  - 36 - HDMI connection
  - 36 - Composite connection
- 36 Connecting to a USB

## 37 TELETEXT

- 37 Switch On/Off
- 37 Simple Text
  - 37 - Page selection
  - 37 - Programming a colour button in LIST mode
- 38 Top Text
  - 38 - Block / Group / Page Selection

- 38 - Direct Page Selection
- 38 Fasttext
- 38 - Page selection
- 39 Special Teletext Function

## **40 MAINTENANCE**

---

- 40 Screen and frame
- 40 Cabinet and stand
- 40 Power cord

## **41 TROUBLESHOOTING**

---

- 41 General
- 42 PC mode

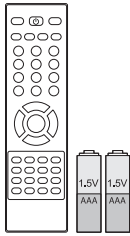
## **44 SPECIFICATIONS**

---

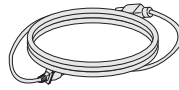
# ASSEMBLING AND PREPARING

## Unpacking

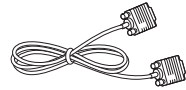
Check your product box for the following items. If there are any missing accessories, contact the local dealer where you purchased your product. The illustrations in this manual may differ from the actual product and accessories.



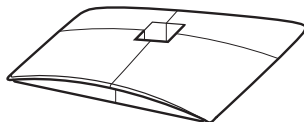
**Remote control and Batteries**



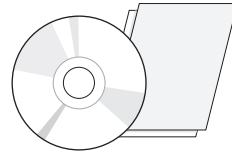
**Power Cord**



**RGB Cable**



**Stand base**



**CD(Owner's Manual) / Card**



### CAUTION

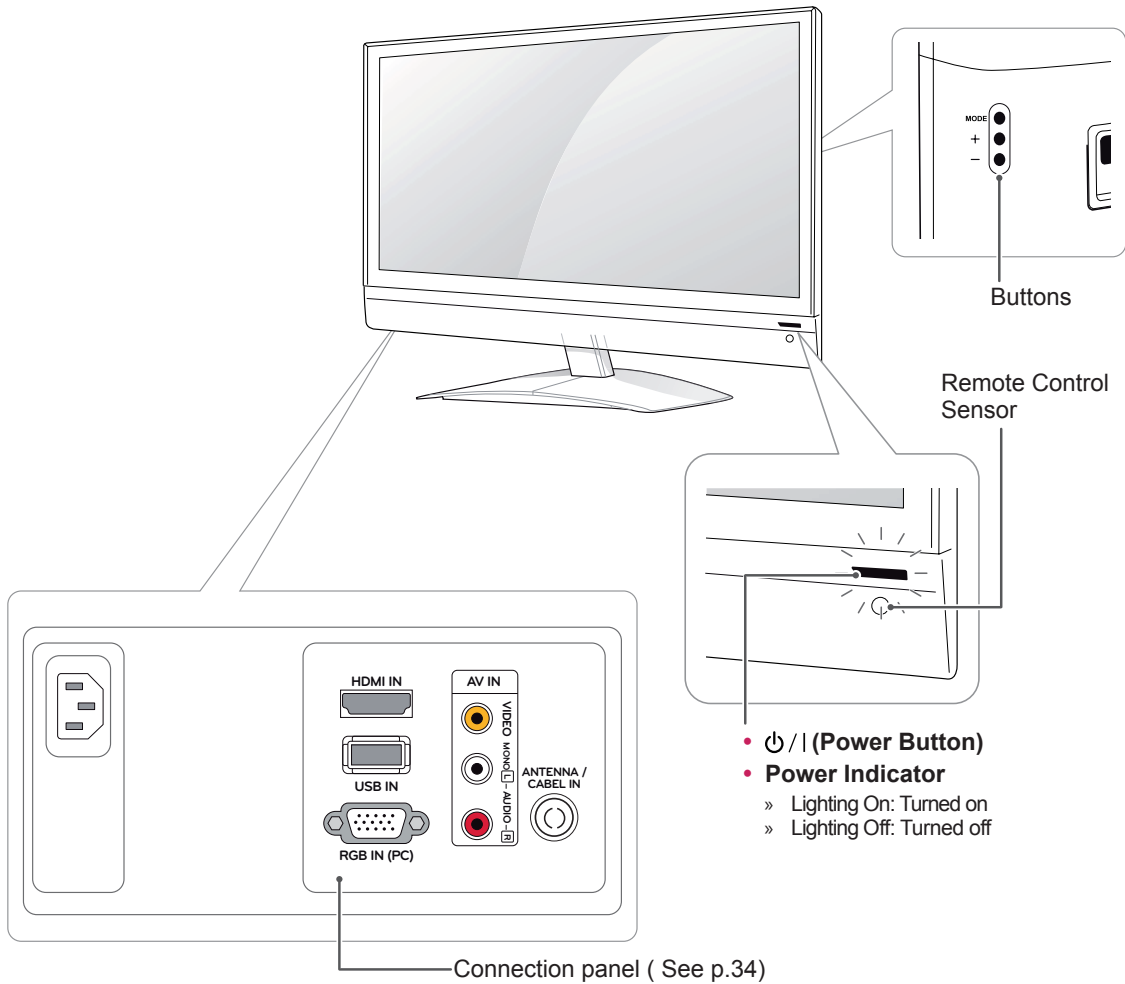
- Do not use any pirated items to ensure the safety and product life span.
- Any damages or injuries by using pirated items are not covered by the warranty.



### NOTE

- The accessories supplied with your product may vary depending on the model.
- Product specifications or contents in this manual may be changed without prior notice due to upgrade of product functions.

## Parts and buttons



button	Description
MODE "●"	Selects the mode.(Programme ⏪ Volume ⏪ INPUT)
	<b>Programme</b> Scrolls through the saved programmes.
	<b>Volume</b> Adjust the volume level.
	<b>INPUT</b> Changes the input source.
⊕, ⊖	Adjusts the mode button level.



### NOTE

- You can set the Power indicator to on or off by selecting **OPTION** in the main menus.
- Local keys work on **Power**, **Programme**, **Volume** and **Input** only.

## Lifting and moving the Monitor set

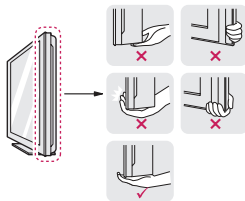
When moving or lifting the Monitor set, read the following to prevent the Monitor set from being scratched or damaged and for safe transportation regardless of its type and size.



### CAUTION

Avoid touching the screen at all times, as this may result in damage to the screen or some of the pixels used to create images.

- It is recommended to move the Monitor set in the box or packing material that the Monitor set originally came in.
- Before moving or lifting the Monitor set, disconnect the power cord and all cables.
- Hold the top and bottom of the Monitor set frame firmly. Make sure not to hold the transparent part, speaker, or speaker grill area.



- When holding the Monitor set, the screen should face away from you to prevent the screen from scratches.



- When transporting the Monitor set, do not expose the Monitor set to jolts or excessive vibration.
- When transporting the Monitor set, keep the Monitor set upright, never turn the Monitor set on its side, or tilt towards the left or right.

## Setting up the Monitor set

### Attaching the Stand Base

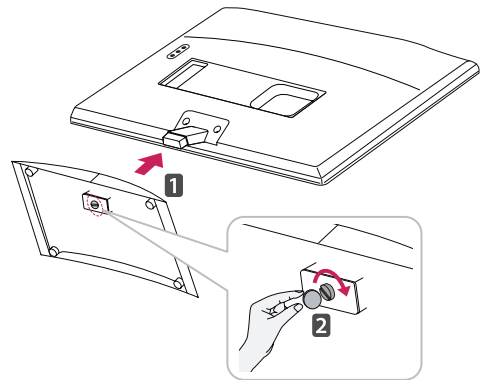
- 1 Place the Monitor set with the screen side down on a flat and cushioned surface.



### CAUTION

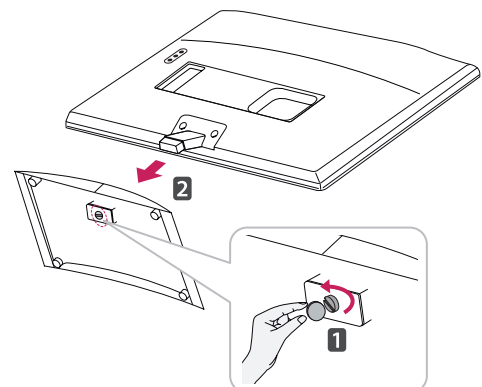
Lay a foam mat or soft protective cloth on the surface to protect the screen from damage.

- 2 Attach the **Stand Base** from the set by turning the screw to the right with a **Coin**.

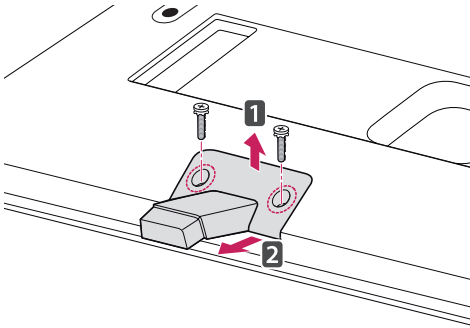


### Detaching the Stand Base and Body

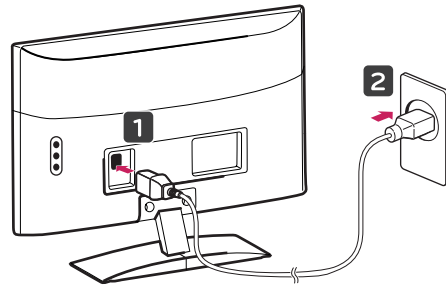
- 1 Place the Monitor set with the screen side down on a flat and cushioned surface.
- 2 Turn the screw to the left, and then pull out the **Stand Base** from the **Stand Body**.



- 3 Remove 2 screws and pull out the **Stand Body** from the Monitor set.

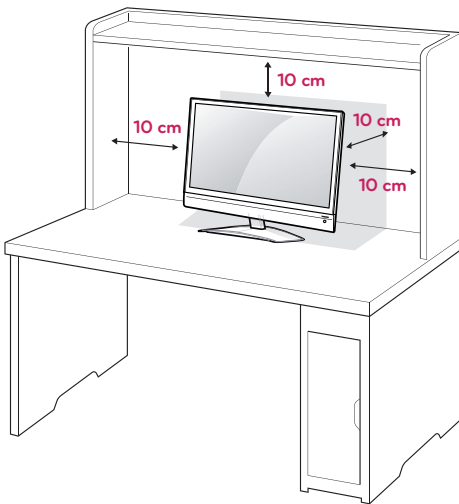


- 2 Connect the **Power Cord** to a wall outlet.



## Mounting on a table

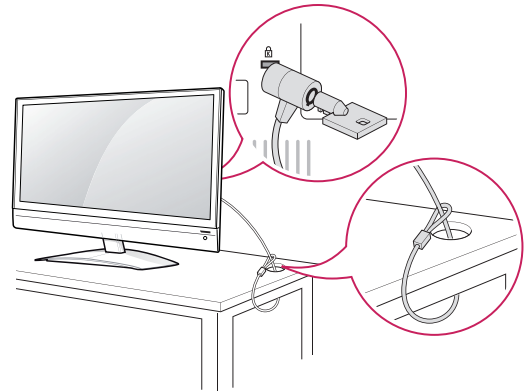
- 1 Lift and tilt the Monitor set into its upright position on a table. Leave a 10 cm (minimum) space from the wall for proper ventilation.



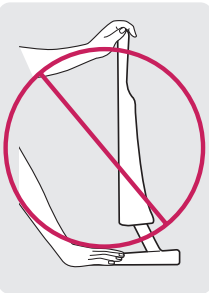
### Using the Kensington security system

The Kensington security system connector is located at the back of the Monitor set. For more information of installation and using, refer to the manual supplied with the Kensington security system or visit <http://www.kensington.com>.

Connect the Kensington security system cable between the Monitor set and a table.



### ! WARNING



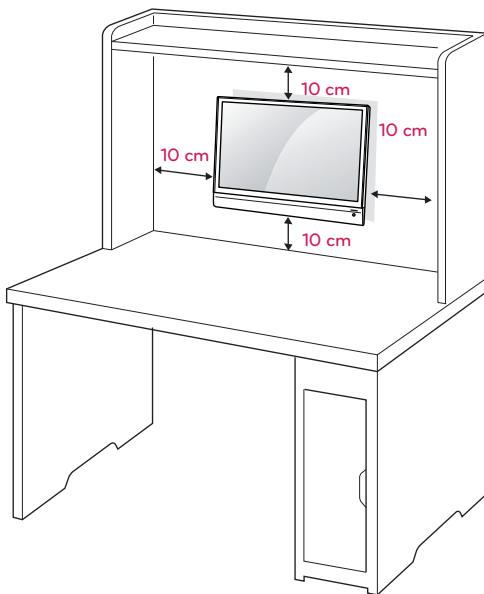
- It's a head fixed model and prohibited from adjusting the angle.
- If you try to adjust the angle forcibly, It can be damaged.

### ! NOTE

The Kensington security system is optional. You can obtain additional accessories from most electronics stores.

## Mounting on a wall

For proper ventilation, allow a clearance of 10 cm on each side and from the wall. Detailed installation instructions are available from your dealer, see the optional Tilt Wall Mounting Bracket Installation and Setup Guide.



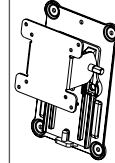
If you intend to mount the Monitor set to a wall, attach Wall mounting interface (optional parts) to the back of the set.

When you install the Monitor set using the wall mounting interface (optional parts), attach it carefully so it will not drop.

Please use VESA standard as below.

- 784.8 mm (30.9 inch) and under
  - \* Wall Mount Pad Thickness : 2.6 mm
  - \* Screw :  $\Phi$  4.0 mm x Pitch 0.7 mm x Length 10 mm
- 787.4 mm (31.0 inch) and above
  - \* Please use VESA standard wall mount pad and screws.

Model	M2241A	M2341A
VESA (A x B)	75 x 75	
Standard screw	M4	
Number of screws	4	
Wall mount bracket (optional)	RW120	



### CAUTION

- Disconnect the power cord first, and then move or install the Monitor set. Otherwise electric shock may occur.
- If you install the Monitor set on a ceiling or slanted wall, it may fall and result in severe injury. Use an authorized LG wall mount and contact the local dealer or qualified personnel.
- Do not over tighten the screws as this may cause damage to the Monitor set and void your warranty.
- Use the screws and wall mounts that meet the VESA standard. Any damages or injuries by misuse or using an improper accessory are not covered by the warranty.



### NOTE

- Use the screws that are listed on the VESA standard screw specifications.
- The wall mount kit includes an installation manual and necessary parts.
- The wall mount bracket is optional. You can obtain additional accessories from your local dealer.
- The length of screws may differ depending on the wall mount. Be sure to use the proper length.
- For more information, refer to the instructions supplied with the wall mount.



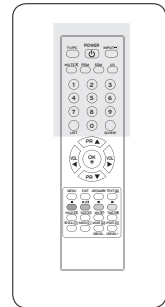
# REMOTE CONTROL

The descriptions in this manual are based on the buttons of the remote control.

Please read this manual carefully and use the Monitor set correctly.

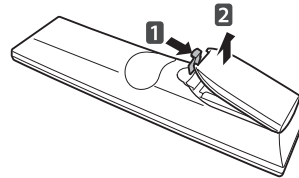
To replace batteries, open the battery cover, replace batteries (1.5 V AAA) matching ⊕ and ⊖ ends to the label inside the compartment, and close the battery cover.

To remove the batteries, perform the installation actions in reverse.

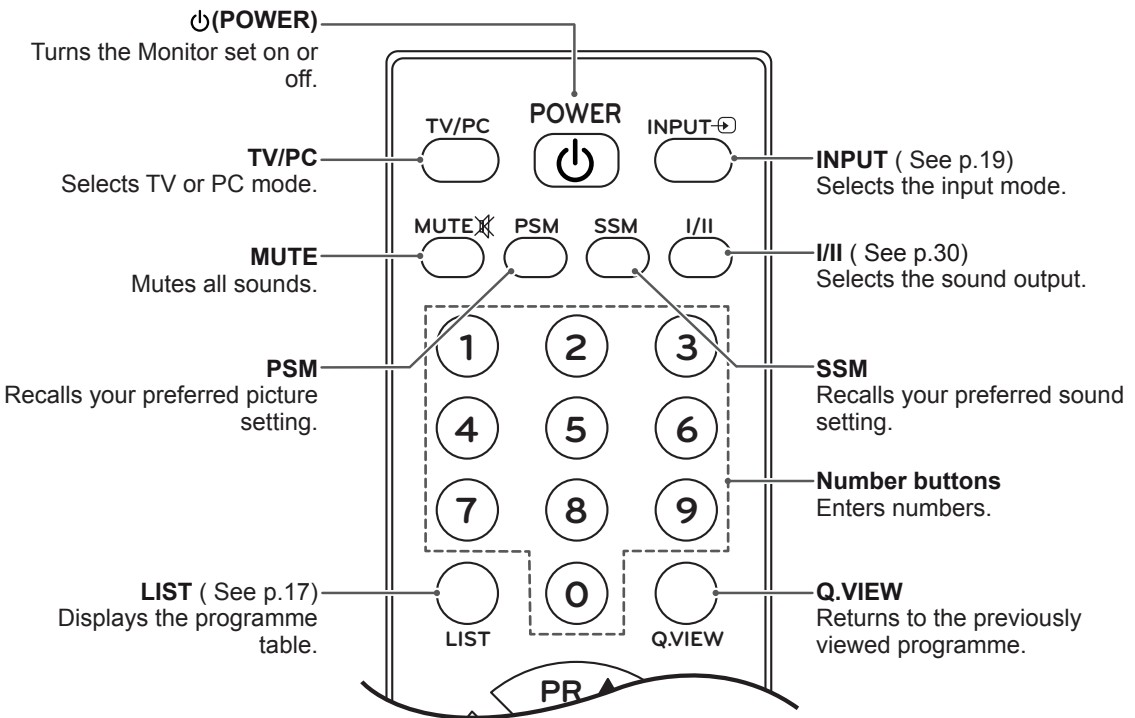


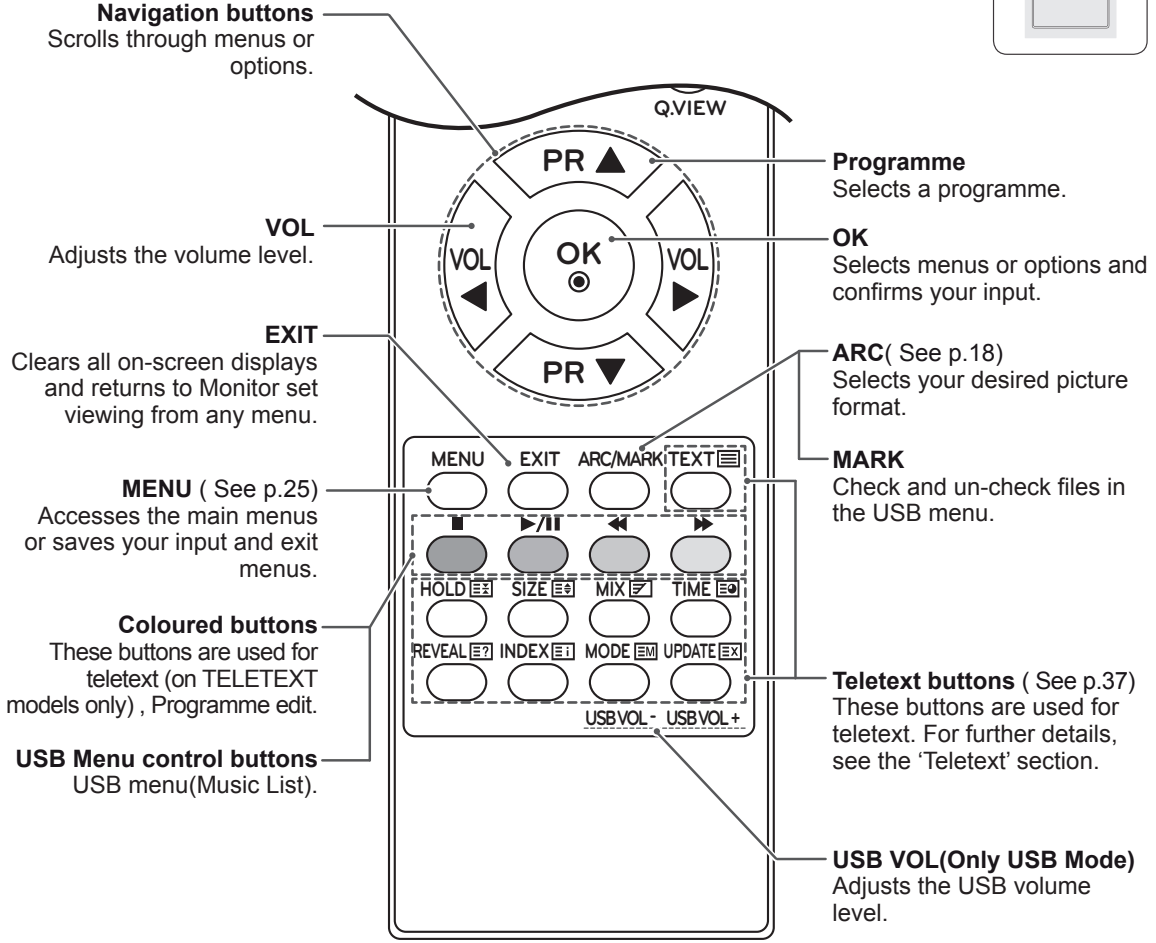
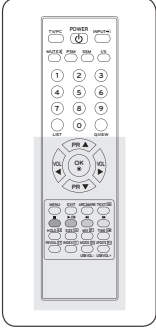
**CAUTION**

Do not mix old and new batteries, as this may damage the remote control.



Make sure to point the remote control to the remote control sensor on the Monitor set.





**NOTE**

- If you lost remote controller, you have to buy it at once because local keys work at **Power**, **Programme**, **Volume** and **Input** only.

# USING THE MONITOR SET

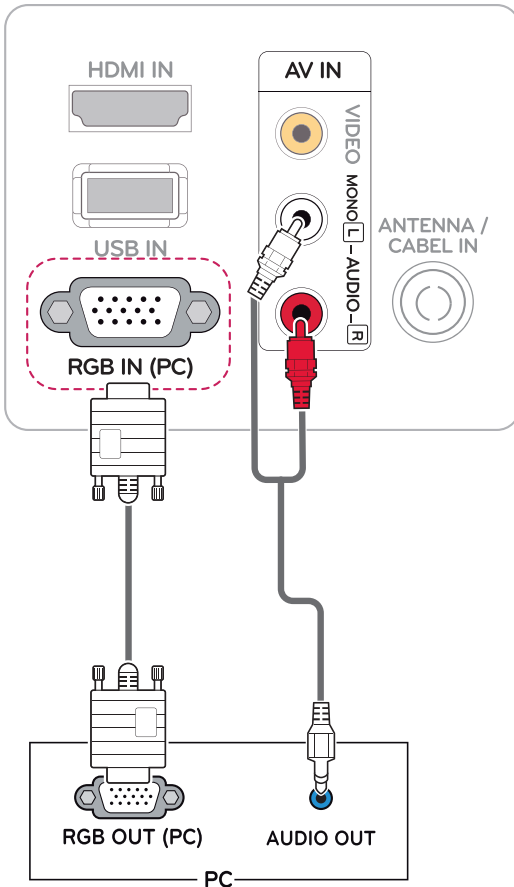
## Connecting to a PC

Your Monitor set supports the Plug & Play\* feature.

\* Plug & Play: The function when a PC recognizes a connected device that users connect to a PC and turn on, without device configuration or user intervention.

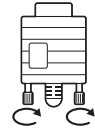
### RGB connection

Transmits the analog video signal from your PC to the Monitor set. Connect the PC and the Monitor set with the D-sub 15 pin cable as shown the following illustrations. To transmit an audio signal, connect an optional audio cable in Monitor set.



### CAUTION

- Connect the signal input cable and tighten it by turning the screws clockwise.
- Do not press the screen with your finger for a long time as this may result in temporary distortion on the screen.
- Avoid displaying a fixed image on the screen for a long period of time to prevent image burn. Use a screensaver if possible.



### NOTE

- If you do not use an optional external speaker, connect the PC to the Monitor set with the optional audio cable.
- The Audio cable is optional. You can obtain additional accessories from most electronics stores.
- If you turn the Monitor set on when the set becomes cold, the screen may flicker. This is normal.
- Some red, green, or blue spots may appear on the screen. This is normal.

## Adjusting the screen

### Selecting an image mode

Display images in its optimized settings by selecting one of the preset image modes.

- 1 Press **MENU** to access the main menus.
- 2 Press the Navigation buttons to scroll to **PICTURE** and press **OK**.
- 3 Press the Navigation buttons to scroll to **Picture Mode** and press **OK**.
- 4 Press the Navigation buttons to scroll to an image mode you want and press **OK**.

Mode	Description
<b>Vivid</b>	Adjusts the video image for the retail environment by enhancing the <b>Contrast, Brightness, Colour, and Sharpness</b> .
<b>Standard</b>	Adjusts the image for the normal environment.
<b>Cinema</b>	Optimizes the video image for the cinematic look and enjoy movies as if you are in a movie theater.

- 5 When you are finished, press **EXIT**.  
When you return to the previous menu, press **MENU**.

### Customizing image options

Customize basic and advanced options of each image mode for the best screen performance.

- 1 Press **MENU** to access the main menus.
- 2 Press the Navigation buttons to scroll to **PICTURE** and press **OK**.
- 3 Press the Navigation buttons to scroll to **Picture Mode**.
- 4 Press the Navigation buttons to scroll to an image mode you want and press **OK**.
- 5 Select and adjust following options, and then press **OK**.

Option	Description
<b>Backlight</b>	Adjusts the brightness of the screen by controlling the LCD backlight. If you decrease the brightness level, the screen becomes darker and the power consumption will be reduced without any video signal loss.
<b>Contrast</b>	Increases or decreases the gradient of the video signal. You may use <b>Contrast</b> when the bright part of the image is saturated.
<b>Brightness</b>	Adjusts the base level of the signal in the image. You may use <b>Brightness</b> when the dark part of the image is saturated.
<b>Sharpness</b>	Adjusts the level of crispness in the edges between the light and dark areas of the picture. The lower the level, the softer the image.
<b>Colour</b>	Adjusts intensity of all <b>Colours</b> .
<b>Tint</b>	Adjusts the balance between <b>Red</b> and <b>Green</b> levels.
<b>Advanced Control</b>	Customizes the advanced options. See more information about advanced options See p.28.
<b>Picture Reset</b>	Restores the options to the default setting.

- 6 When you are finished, press **EXIT**.  
When you return to the previous menu, press **MENU**.

## Customizing PC display options

Customize options of each image mode for the best image quality.

- This function works in the following mode: RGB[PC] mode.
- 1 Press **MENU** to access the main menus.
  - 2 Press the Navigation buttons to scroll to **PICTURE** and press **OK**.
  - 3 Press the Navigation buttons to scroll to **Screen** and press **OK**.
  - 4 Select and adjust following options, and then press **OK**.

Option	Description
<b>Resolution</b>	Selects a proper <b>Resolution</b> .
<b>Auto Config.</b>	Sets to adjust the screen <b>Position</b> , <b>Size</b> and <b>Phase</b> automatically. The displayed image may be unstable for a few seconds while the configuration is in progress.
<b>Position/ Size/Phase</b>	Adjusts the options when the image is not clear, especially when characters are shaky, after the auto configuration.
<b>Reset</b>	Restores the options to the default setting.

- 5 When you are finished, press **EXIT**.  
When you return to the previous menu, press **MENU**.

## Adjusting the sound

### Selecting an sound mode

Play the sound in its optimized settings by selecting one of the preset sound modes.

- 1 Press **MENU** to access the main menus.
- 2 Press the Navigation buttons to scroll to **AUDIO** and press **OK**.
- 3 Press the Navigation buttons to scroll to **Sound Mode** and press **OK**.
- 4 Press the Navigation buttons to scroll to a sound mode you want and press **OK**.

Mode	Description
<b>Standard</b>	Selects when you want standard-quality sound.
<b>Music</b>	Selects when you listen to music.
<b>Cinema</b>	Selects when you watch movies.

- 5 When you are finished, press **EXIT**.  
When you return to the previous menu, press **MENU**.

### Customizing sound options

Customize options of each sound mode for the best sound quality.

- 1 Press **MENU** to access the main menus.
- 2 Press the Navigation buttons to scroll to **AUDIO** and press **OK**.
- 3 Press the Navigation buttons to scroll to **Sound Mode** and press **OK**.
- 4 Press the Navigation buttons to scroll to a sound mode you want and press **OK**.
- 5 Select and adjust following options, and then press **OK**.

Option	Description
<b>Treble</b>	Controls the dominant sounds in the output. When you turn up the treble, it will increase the output to the higher frequency range.
<b>Bass</b>	Controls the softer sounds in the output. When you turn up the bass, it will increase the output to the lower frequency range.
<b>Reset</b>	Resets the sound mode to the default setting.

- 6 When you are finished, press **EXIT**.  
When you return to the previous menu, press **MENU**.

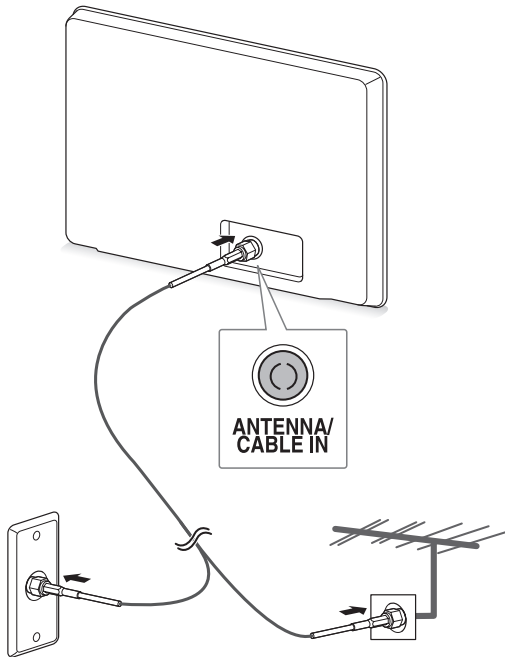
# WATCHING TV

## Connecting an antenna or cable

Connect an antenna, cable, or cable box to watch TV referring to the following. The illustrations may differ from the actual accessories and an RF cable is optional.

### Connecting an antenna or basic cable

Connect the Monitor set to a wall antenna socket with an RF cable (75 ohm).

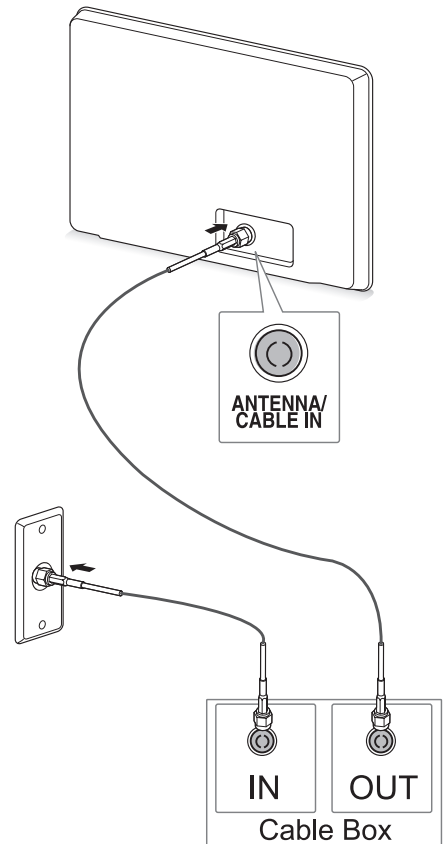


#### NOTE

- Use a signal splitter to use more than 2 TVs.
- If the image quality is poor, install a signal amplifier properly to improve the image quality.
- If the image quality is poor with an antenna connected, aim the antenna to the proper direction.
- Visit <http://AntennaWeb.org> for more information about the antenna and cable connection.

## Connecting with a cable box

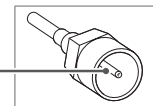
Connect the Monitor set to a cable box and the cable box to a wall antenna socket with 2 RF cables (75 ohm).



#### CAUTION

- Make sure not to bend the copper wire of the RF cable.

Copper wire



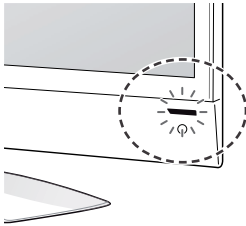
- Complete all connections instructions between devices, and then connect the power cord to the power outlet to prevent damages to your Monitor set.

## Accessing the TV for the first time

When you access the Monitor set for the first time, the initial setting screen appears. Select a language and customize the basic settings.

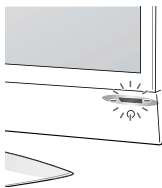
- 1 Connect the power cord to a power outlet.
- 2 Press  $\text{Power}/\text{I}$  on the Monitor set to turn the Monitor set on.

The Power indicator lighting is turned on.



### NOTE

When the Monitor set is in Power saving mode, the Power indicator lighting blinks.

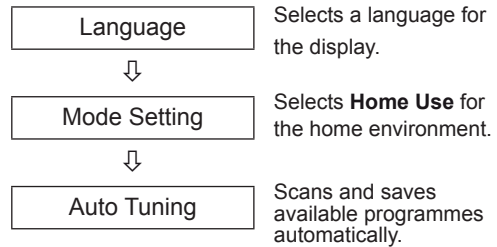


- 3 The initial setting screen appears if you access the TV for the first time.

### NOTE

- You can also switch the Monitor set from PC mode to TV mode, press **TV/PC**.
- You can also access **Initial Setting** by accessing **OPTION** in the main menus.
- If you do not operate the Monitor set within 40 seconds when the setting menu screen appears, the setting menus will disappear.

- 4 Follow the on-screen instructions to customize your Monitor set according to your preferences.



### NOTE

- To display images in the best quality for your home environment, select **Home Use mode**.
- **Store Demo** mode is suitable for the retail environment.
- If you select **Store Demo mode**, the previously customized settings will switch to the default settings of **Store Demo** in 5 minutes.

- 5 When the basic settings are complete, press **OK**.

### NOTE

If you do not complete the initial setting, it will appear whenever you access the TV.

- 6 To turn the Monitor set off, press  $\text{Power}/\text{I}$  on the Monitor set.

The Power Indicator turns off.

### CAUTION

Disconnect the power cord from the power outlet when you do not use the Monitor set for a long period of time.

## Watching TV

- 1 Press **⏻** on the Remote control or **⏻/|** on the Monitor set to turn the Monitor set on.
- 2 Press **INPUT** and select **Antenna**.
- 3 Control the Monitor set using the following buttons and menus while you are watching TV.

Button / Menu	Description
<b>PR</b> (▲, ▼)	Scrolls through the saved programmes
<b>0 - 9</b>	Selects a programme by entering numbers
<b>VOL</b> (◀, ▶)	Adjusts the volume level
<b>MUTE</b>	Mutes all sounds
<b>PSM</b>	Selects one of the preset image modes ( See p.27)
<b>SSM</b>	Selects one of the preset audio modes. ( See p.29)
<b>ARC</b>	Resizes an image ( See p.18)

- 4 To turn the Monitor set off, Press **⏻** on the Remote control or **⏻/|** on the Monitor set.

## Managing programmes

### Automatically setting up programmes

Use this to automatically find and store all available programmes.

- 1 Press **MENU** to access the main menus.
- 2 Press the Navigation buttons to scroll to **SETUP** and press **OK**.
- 3 Press the Navigation buttons to scroll to **Auto Tuning** and press **OK**.
- 4 Select **Yes** to start automatic tuning.  
The TV scans and saves available programmes automatically.
- 5 When you are finished, press **EXIT**.  
When you return to the previous menu, press **MENU**.

## Manually setting up programmes

Manual Tuning lets you manually tune and arrange the stations in whatever order you desire.

- 1 Press **MENU** to access the main menus.
- 2 Press the Navigation buttons to scroll to **SETUP** and press **OK**.
- 3 Press the Navigation buttons to scroll to **Manual Tuning** and press **OK**.
- 4 Press the Navigation buttons to scroll to **TV System**.
- 5 Press the Navigation buttons to scroll to **V/UHF** or **Cable**.
- 6 Press the Navigation buttons or Number buttons to scroll Select the desired channel number.
- 6 Press the Navigation buttons to scroll to Commence searching.
- 7 Press the Navigation buttons to scroll to **Store** and press **OK**
- 8 When you are finished, press **EXIT**.  
When you return to the previous menu, press **MENU**.

### Editing your programme list

- 1 Press **MENU** to access the main menus.
- 2 Press the Navigation buttons to scroll to **SETUP** and press **OK**.
- 3 Press the Navigation buttons to scroll to **Programme Edit** and press **OK**.
- 4 Edit programmes using the following buttons.

Button	Description
<b>Navigation</b>	Scrolls through programme types or programmes
<b>OK</b>	Selects a programme to view
<b>Colour Button</b>	Adds or deletes a programme. The deleted programme displays in gray.



## Selecting the programme list

You can check which programmes are stored in the memory by displaying the programme list.

### Displaying programme LIST

- 1 Press **LIST** button to access the Programme List.
- 2 When you are finished, press **MENU** or **EXIT**.



#### NOTE

- You may find some blue programmes. These have been set up to be skipped by auto programming or in the programme edit mode.
- Some programmes with the channel number shown in the programme LIST indicate there is no station name assigned.

### Selecting a programme in the programme list

- 1 Press the Navigation buttons to programme.
- 2 Switch to the chosen programme number, press **OK**.

## Favourite programme setup

### Selecting favourite programme

Favourite programme is a convenient feature that lets you quickly scan up to programmes of your choice without having to wait for the TV to scan through all the in-between programmes.

- 1 Press **MENU** to access the main menus.
- 2 Press the Navigation buttons to scroll to **SETUP** and press **OK**.
- 3 Press the Navigation buttons to scroll to **Programme Edit** and press **OK**.
- 4 Press the Navigation buttons to scroll to **Programme** you want and press **GREEN** button.
- 5 When you are finished, press **EXIT**. When you return to the previous menu, press **MENU**.



#### NOTE

- This will automatically include the selected programme into your favourite programme list.

### Displaying the favourite programme list

- 1 Press **Green** button to access the Favourite Programme List.
- 2 When you are finished, press **MENU** or **EXIT**.

## Using additional options

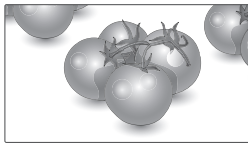
### Adjusting aspect ratio

Resize the image to view the image at its optimal size by pressing **ARC** while you are watching Monitor set.

#### ! CAUTION

- If a fixed image displays on the screen for a long period of time, it will be imprinted and become a permanent disfigurement on the screen. This is "image burn" or "burn-in" and not covered by the warranty.
- If the aspect ratio is set to 4:3 for a long period of time, image burn may occur on the letterboxed area of the screen.

- **16:9:** The following selection will allow you to adjust the picture horizontally, in linear proportion, to fill the entire screen (useful for viewing 4:3 formatted DVDs).



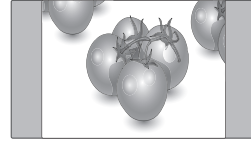
- **Just Scan:** Following Selection will lead to you view the picture of best quality without loss of original picture in high resolution image.  
Note : If there is noise in original Picture, You can see the noise at the edge.



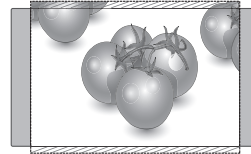
- **Original:** When your Monitor set receives a wide screen signal it will automatically change to the picture format broadcast.



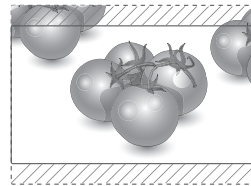
- **4:3:** The following selection will allow you to view a picture with an original 4:3 aspect ratio, gray bars will appear on both the left and right of the screen.



- **14:9:** You can view a picture format of 14:9 or a general Monitor set programme in the 14:9 mode. The 14:9 screen is viewed in the same way as in 4:3, but is magnified to the left and right.



- **Zoom 1 & 2:** The following selection will allow you to view the picture without any alteration, while filling the entire screen. However, the top and bottom of the picture will be cropped.



#### ! NOTE

- You can only select **4:3, 16:9 (Wide)** in **RGB** mode.
- In **HDMI** (over 720p) mode, **Just Scan** is available.

## Using the input list

### Selecting an input source

- 1 Press **INPUT** to access the input source list.
- 2 Press the Navigation buttons to scroll to one of the input sources and press **OK**.

Input source	Description
<b>Antenna or cable</b>	Watch TV over the air and cable
<b>AV</b>	Watch the contents in a VCR or other external devices
<b>RGB</b>	View a PC display on the screen
<b>HDMI</b>	Watch contents in a DVD or Digital settop box or other high definition devices

## On-screen menu language

The installation guide menu appears on the Monitor set screen when it is switched on for the first time.

- 1 Press the Navigation buttons to scroll to **Desired Language** and press **OK**.

### If you want to change Language

- 1 Press **MENU** to access the main menus.
- 2 Press the Navigation buttons to scroll to **OPTION** and press **OK**.
- 3 Press the Navigation buttons to scroll to **Language** and press **OK**.
- 4 Press the Navigation buttons to scroll to **Desired Language** option you want and press **OK**.
- 5 When you are finished, press **EXIT**.  
When you return to the previous menu, press **MENU**.

### NOTE

- If you do not finish the set-up **Installation Guide** by pressing **EXIT** or if you time out on the OSD (On Screen Display) the installation menu will continuously appear until the set up is completed whenever the Monitor set is switched on.

## Locking the buttons on the Monitor set

Lock the buttons on the Monitor set to prevent any unwanted operations or accidents by children.

- 1 Press **MENU** to access the main menus.
- 2 Press the Navigation buttons to scroll to **OPTION** and press **OK**.
- 3 Press the Navigation buttons to scroll to **Key Lock** and press **OK**.
- 4 Press the Navigation buttons to scroll to **On** and press **OK** to activate the Key lock feature.  
- To deactivate the Key lock feature, select **Off**.
- 5 When you are finished, press **EXIT**.  
When you return to the previous menu, press **MENU**.

### NOTE

- The Monitor set is programmed to remember the last setting after you turn the Monitor set off.
- If you turn the monitor set off while the key lock feature is activated and wish to turn it back on, press the  $\odot$  / | on the monitor set. You can also switch the device on using the remote control by pressing the  $\odot$ , **INPUT**, **PR**,  $\wedge$ ,  $\vee$  or **Number** buttons.
- If you press any button on the Monitor set with the Key lock feature activated,  $\blacktriangle$  **Key Lock ON** appears on the screen.

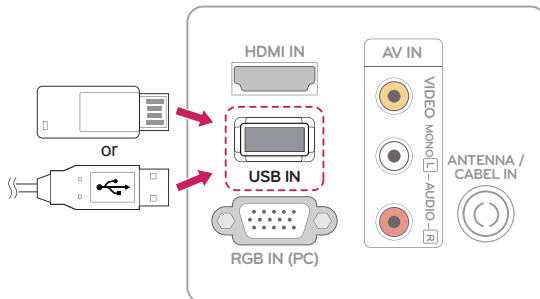
# ENTERTAINMENT

## Using integrated media features

### Connecting USB storage devices

Connect USB storage devices such as a USB flash memory, external hard drive, or MP3 player to the Monitor set and use multimedia features (“**Browsing files**” See p.21).

Connect a USB flash memory or USB memory card reader to the Monitor set as shown on the following illustration. The **USB** screen appears.



#### CAUTION

- Back up your files saved on a USB storage device frequently, as you may lose or damage the files and this may not be covered by the warranty.

#### Tips for using USB storage devices

- Only a USB storage device is recognizable.
- If the USB storage device is connected through a USB hub, the device is not recognizable.
- A USB storage device using an automatic recognition programme may not be recognized.
- A USB storage device which uses its own driver may not be recognized.
- The recognition speed of a USB storage device may depend on each device.
- Please do not turn off the Monitor set or unplug the USB device when the connected USB storage device is working. When such device is suddenly separated or unplugged, the stored files or the USB storage device may be damaged.
- Please do not connect the USB storage device which was artificially maneuvered on the PC. The device may cause the product to malfunction or fail to be played. Never forget to use only a USB storage device which has normal music files, image files.
- Please use only a USB storage device which was formatted as a FAT, FAT16, FAT32 file system provided with the windows operating system. In case of a storage device formatted as a different utility programme which is not supported by Windows, it may not be recognized.
- Please connect power to a USB storage device(over 0.5 A) which requires an external power supply. If not, the device may not be recognized.
- Please connect a USB storage device with the cable offered by the device maker.
- Some USB storage devices may not be supported or operated smoothly.
- File alignment method of USB storage device is similar to Window XP and filename can recognize up to 100 English characters.
- Be sure to back up important files since data stored in a USB memory device may be damaged. We will not be responsible for any data loss.
- If the USB HDD does not have an external power source, the USB device may not be

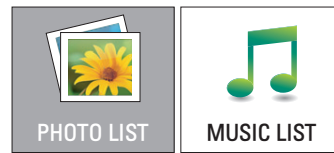
detected. So be sure to connect the external power source.

- Please use a power adaptor for an external power source. We do not guarantee an USB cable for an external power source.
- If your USB memory device has multiple partitions or if you use a USB multi-card reader, you can use up to 6 partitions or USB memory devices.
- If a USB memory device is connected to a USB multi-card reader, its volume data may not be detected.
- If the USB memory device does not work properly, disconnect and reconnect it.
- How fast a USB memory device is detected differs from device to device.
- If the USB is connected in Standby Mode, specific hard disk will automatically be loaded when the Monitor set is turned on.
- The recommended capacity is 32 GB or less for USB memory.
- Any device with more than the recommended capacity may not work properly.
- USB storage devices below USB 2.0 are supported as well.
- When a broken file is played in the USB storage, the Monitor set may turn off or work abnormally.
- If picture size is bigger than the recommended size, the picture quality would be bad.
- USB file/folder number has limitation, 648, at each folder.

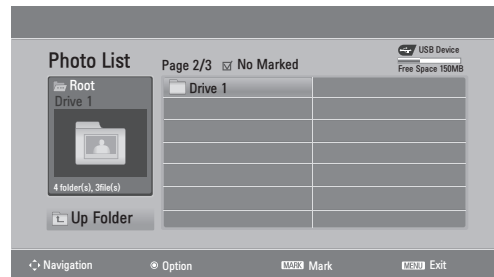
## Browsing files

Access the **Photo** or **Music** lists and browse files.

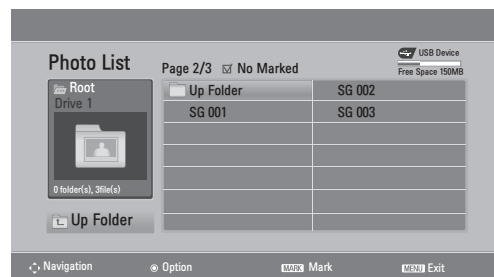
- 1 Connect a **USB** storage device.
- 2 Press **MENU** to access the main menus.
- 3 Press the Navigation buttons to scroll to **USB** and press **OK**.
- 4 Press the Navigation buttons to scroll to **PHOTO LIST** or **MUSIC LIST** and press **OK**.



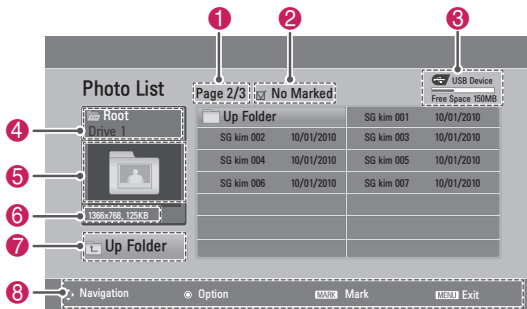
- 5 Select **Drive1** to access the connected USB storage device



- 6 Select a folder you want.
  - To return to the previous level, select **Up Folder**.



- 7 Press the Navigation buttons to browse files. The highlighted file will display in the preview window.



No.	Description
1	Current page number/total number of pages
2	The number of selected files
3	Usable USB memory
4	File and Folder name
5	Preview window
6	File size
7	Return to the previous level
8	Available buttons on the remote control

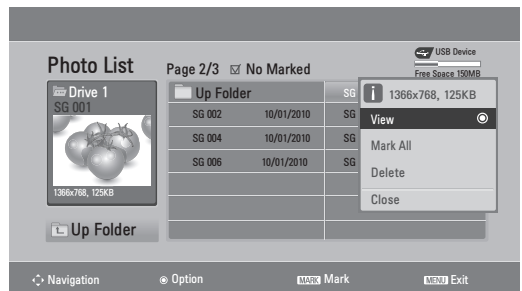
Supported file format

Type	Supported file format
<b>Photo</b>	<ul style="list-style-type: none"> <li>JPEG</li> <li>Recommended size 960 pixel (W) x 540 pixel (H)</li> <li>Available size Baseline: 64 pixel (W) x 64 pixel (H) - 12244 pixel (W) x 8640 pixel (H) Progressive: 64 pixel (W) x 64 pixel (H) - 1920 pixel (W) x 816 pixel (H)</li> </ul>
<b>Music</b>	<ul style="list-style-type: none"> <li>MP3</li> <li>Bit rate range 32 Kbps - 320 Kbps</li> <li>Sampling rate (Sampling Frequency) MPEG1 layer 3: 32 kHz, 44.1 kHz, 48 kHz MPEG2 layer 3: 16 kHz, 22.05 kHz, 24 kHz MPEG2.5 layer 3: 8 kHz, 11.025 kHz, 12 kHz</li> </ul> <p>* A copy-protected file will not play.</p>

## Viewing Photos

View image files saved in a USB storage device. The displays on the screen may differ from the model.

- 1 Press the Navigation buttons to scroll to **USB** and press **OK**.
- 2 Press the Navigation buttons to scroll to **Photo List** and press **OK**.
- 3 Press the Navigation buttons to select **Drive 1** to access the connected USB storage device.
- 4 Press the Navigation buttons to scroll to a folder you want and press **OK**.
- 5 Press the Navigation buttons to scroll to a file you want and press **OK**. A pop-up window will appear.

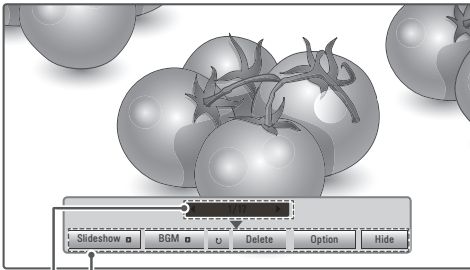


- 6 View photos by using the following menus.

Menu	Description
<b>View</b>	Displays the selected photo in a full-screen view. <ul style="list-style-type: none"> <li><b>Drive:</b> Views photos saved in a USB storage drive.</li> </ul>
<b>Mark All or Unmark All</b>	Selects all files or clears all of your selections
<b>Delete</b>	Deletes a file saved in a USB storage device.
<b>Close</b>	Closes the pop-up menu.

Using photo options

Use the following options while viewing photos.



Options

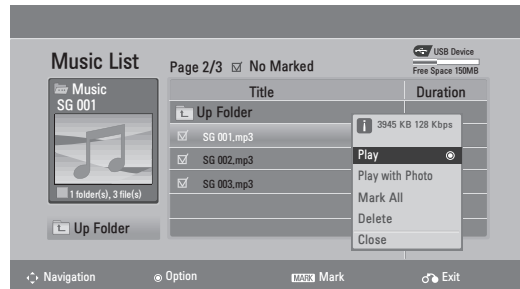
Number of selected photos

Option	Description
<b>Slideshow</b>	Starts or stops a slideshow with selected photos. If there are no selected photos, all photos saved in the current folder display during a slideshow. To set a slideshow speed, select <b>Option</b> .
<b>BGM</b>	Turns the background music on or off. To set the background music folder, select <b>Option</b> .
<b>↻ (Rotate)</b>	Rotates photos clockwise (90°, 180°, 270°, 360°).  <div style="border: 1px solid black; padding: 5px;"> <p><b>NOTE</b></p> <p>The supported photo size is limited. You cannot rotate a photo if the resolution of the rotated width is larger than the supported resolution size.</p> </div>
<b>Delete</b>	Deletes a photo.
<b>Option</b>	<ul style="list-style-type: none"> <li><b>Slide Speed:</b> Selects a slideshow speed (<b>Fast</b>, <b>Medium</b>, <b>Slow</b>).</li> <li><b>Music Album:</b> Selects a music folder for the background music.</li> </ul> <div style="border: 1px solid black; padding: 5px;"> <p><b>NOTE</b></p> <p>You cannot change the music folder while the background music is playing.</p> </div>
<b>Hide</b>	Hides the option window. To display the options, press <b>OK</b> .

## Listening to Music

- 1 Press the Navigation buttons to scroll to **USB** and press **OK**.
- 2 Press the Navigation buttons to scroll to **Music List** and press **OK**.
- 3 Select **Drive1** to access the connected USB storage device.
- 4 Press the Navigation buttons to scroll to a folder you want and press **OK**.
- 5 Press the Navigation buttons to scroll to a file you want and press **OK**.

A pop-up window will appear.



- 6 Play music by using the following menus.

Menu	Description
<b>Play, Stop Play, or Play Marked</b>	Plays music, stops playback, or plays the selected music file. If you play music without selecting music files, all of the music files saved in the current folder will play. The ⏸ icon will appear in front of the duration on the currently playing file. <ul style="list-style-type: none"> <li><b>Drive:</b> Listen to music files saved in a USB storage drive.</li> </ul>
<b>Play with Photo</b>	Displays photos during playback.
<b>Mark All or Unmark All</b>	Selects all files or clears all of your selections
<b>Delete</b>	Deletes a file saved in a USB storage device.
<b>Close</b>	Closes the pop-up menu.

- 7 Control playback by using the following buttons.

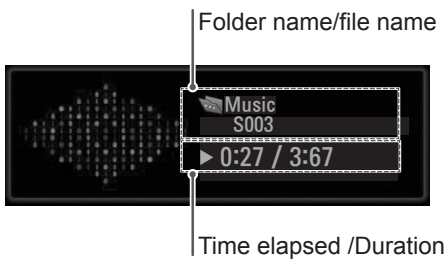
Button	Description
■	Stops playback
▶/	Plays a music file and Pauses or resumes playback
▶▶	Skips to the next file
◀◀	Skips to the previous file

**NOTE**

- A damaged or corrupted file will not play and the duration of the file display as 00:00.
- A copy-protected file will not play.
- If the Monitor set is not in use for some time during playback, the information box as a screensaver will appear to prevent image burn.

To return to the Music list screen, press

**MENU or EXIT**

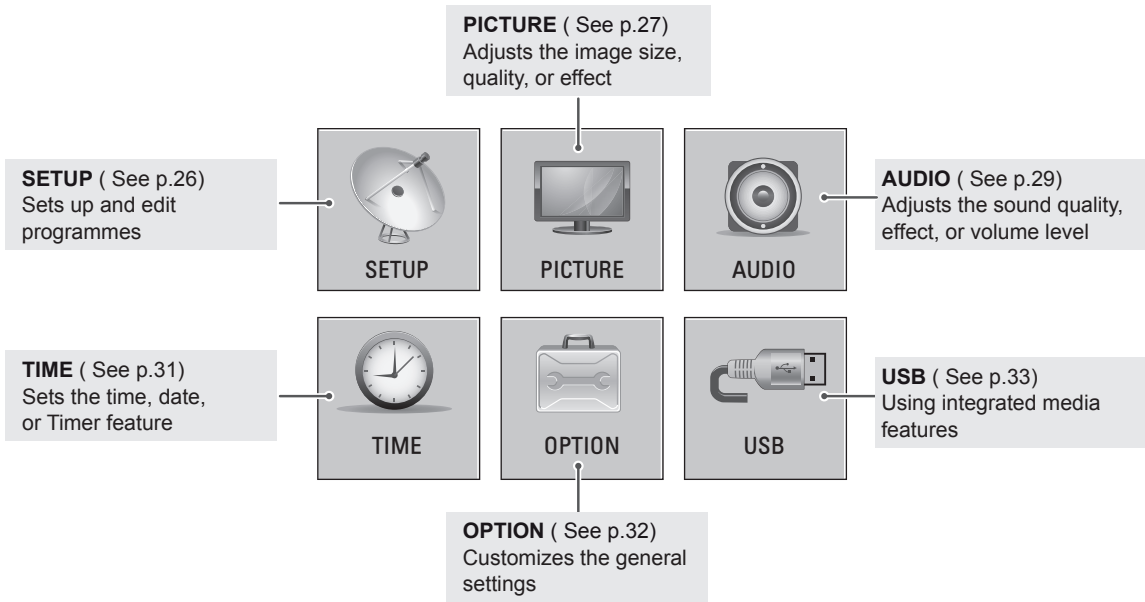
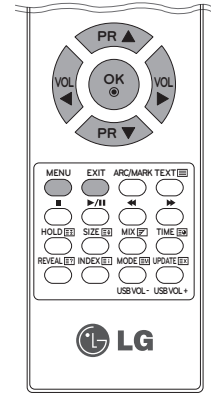




# CUSTOMIZING SETTINGS

## Accessing main menus

- 1 Press **MENU** to access the main menus.
- 2 Press the Navigation buttons to scroll to one of the following menus and press **OK**.
- 3 Press the Navigation buttons to scroll to the setting or option you want and press **OK**.
- 4 When you are finished, press **EXIT**.  
When you return to the previous menu, press **MENU**.



## Customizing settings

### SETUP settings

- 1 Press **MENU** to access the main menus.
- 2 Press the Navigation buttons to scroll to **SETUP** and press **OK**.
- 3 Press the Navigation buttons to scroll to the setting or option you want and press **OK**.
  - To return to the previous level, press **MENU**.
- 4 When you are finished, press **EXIT**.
  - When you return to the previous menu, press **MENU**.

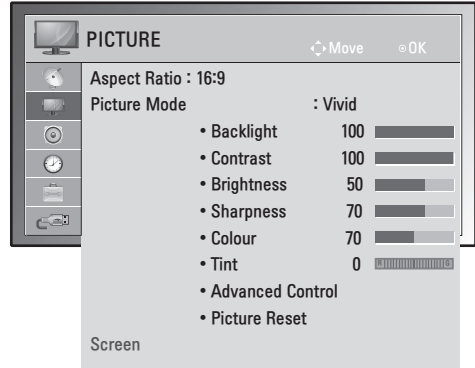


The available Programme settings are described in the following:

Setting	Description
<b>Auto Tuning</b>	Tunes and stores all available programmes through antennas or cable inputs. ( See p.16)
<b>Manual Tuning</b>	Tunes and stores the programmes you want manually. ( See p.16)
<b>Programme Edit</b>	Edit the programme list. ( See p.16)

## PICTURE settings

- 1 Press **MENU** to access the main menus.
- 2 Press the Navigation buttons to scroll to **PICTURE** and press **OK**.
- 3 Press the Navigation buttons to scroll to the setting or option you want and press **OK**.
  - To return to the previous level, press **MENU**.
- 4 When you are finished, press **EXIT**.  
When you return to the previous menu, press **MENU**.



The available picture settings are described in the following:

Setting	Description
<b>Aspect Ratio</b>	Changes the image size to view images at its optimal size. ( See p.18)
<b>Picture Mode</b>	Selects one of the preset image or customizes options in each mode for the best Monitor set screen performance. You are also able to customize advanced options of each mode. The available preset picture modes vary depending on the Monitor set .
	<b>Mode</b>
	Vivid Adjusts the video image for the retail environment by enhancing the contrast, brightness, Colour, and sharpness.
	Standard Adjusts the image for the normal environment.
	Cinema Optimizes the video image for a cinematic look to enjoy movies as if you are in a movie theater.
<b>Screen</b>	Customizes the PC display options in RGB mode.
	<b>Option</b>
	Resolution Selects a proper resolution. See "Specification" See p.44 for the recommended resolution for each model.
	Auto Configure Sets to adjust the screen position, clock, and phase automatically. The displayed image may be unstable for a few seconds while the configuration is in progress.
	Position/Size/Phase Adjusts the options when the picture is not clear, especially when characters are shaky, after the auto configuration.
	Reset Restores the options to the default setting.

## Basic image options

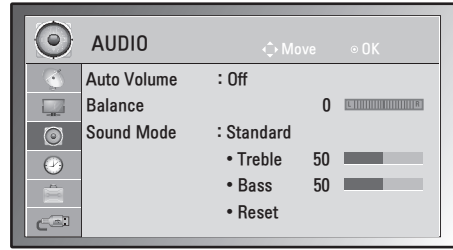
Setting	Description
<b>Backlight</b>	Adjusts the brightness of the screen by controlling the LCD backlight. If you decrease the brightness level, the screen becomes darker and the power consumption will be reduced without any video signal loss.
<b>Contrast</b>	Increases or decreases the gradient of the video signal. You may use <b>Contrast</b> when the bright part of the picture is saturated.
<b>Brightness</b>	Adjusts the base level of the signal in the picture. You may use <b>Brightness</b> when the dark part of the picture is saturated.
<b>Sharpness</b>	Adjusts the level of crispness in the edges between the light and dark areas of the picture. The lower the level, the softer the image.
<b>Colour</b>	Adjusts intensity of all Colours.
<b>Tint</b>	Adjusts the balance between red and green levels.
<b>Advanced Control</b>	Customizes the advanced options.
<b>Reset</b>	Restores the options to the default setting.

## Advanced image options


Setting	Description
<b>Colour Temperature (Medium/Warm/Cool)</b>	This is the function to adjust the overall colour of the screen to the feeling you want.
<b>Dynamic Contrast (Off/Low/High)</b>	Adjusts the contrast to keep it at the best level according to the brightness of the screen. The picture is improved by making bright parts brighter and dark parts darker.
<b>Dynamic Colour (Off/Low/High )</b>	Adjusts screen colours so that they look livelier, richer and clearer. This feature enhances hue, saturation and luminance so that red, blue, green and white look more vivid.
<b>Noise Reduction (Off/Low/Medium/High)</b>	Reduces screen noise without compromising video quality.
<b>Black Level (Low/High/Auto)</b>	<ul style="list-style-type: none"> <li>• Low: The picture of the screen gets darker.</li> <li>• High: The picture of the screen gets brighter.</li> <li>• Auto: Realizing the black level of the screen and set it to High or Low automatically.</li> </ul> Set black level of the screen to proper level. This function enables to select 'Low' or 'High' in the following mode: AV(NTSC-M), HDMI. Otherwise, 'Black level' is set to 'Auto'.
<b>Film Mode (On/Off)</b>	You can watch a cinema-like video by eliminating judder effect. Use this function when you watch movies.
<b>Colour Filter (Red/Green/Blue)</b>	This is the function to filter the specific colours of the video. You can use the RGB filter to set colour saturation and hue accurately.

## AUDIO settings

- 1 Press **MENU** to access the main menus.
- 2 Press the Navigation buttons to scroll to **AUDIO** and press **OK**.
- 3 Press the Navigation buttons to scroll to the setting or option you want and press **OK**.
  - To return to the previous level, press **MENU**.
- 4 When you are finished, press **EXIT**.  
When you return to the previous menu, press **MENU**.



The available audio options are described in the following:

Setting	Description	
<b>Auto Volume</b>	Activates the Auto Volume feature to keep the volume level consistent whenever you change programmes. The volume level may not be consistent due to different signal conditions of broadcasting stations.	
<b>Balance</b>	Adjusts balance between the left and right speakers according to your room environment.	
<b>Sound Mode</b>	Selects one of the preset sound modes or customize each option in each mode.	
	<b>Mode</b>	
	Standard	Select when you want standard-quality sound.
	Music	Select when you listen to music.
	Cinema	Select when you watch movies.
	 <b>NOTE</b>	If sound quality or volume is not at the level you want, it is recommended to use a separate home theater system or amplifier to cope with different user environments.
	<b>Option</b>	
	Treble	Controls the dominant sounds in the output. When you turn up the treble, it will increase the output to the higher frequency range.
	Bass	Controls the softer sounds in the output. When you turn up the bass, it will increase the output to the lower frequency range.
Reset	Resets the sound mode to the default setting.	

### Stereo/Dual Reception

When a programme is selected, the sound information for the station appears with the programme number and station name.

- 1 Press **I/II** and press the **One/Two** and press **OK**.

Broadcast	On Screen Display
<b>Mono</b>	MONO
<b>Stereo</b>	STEREO
<b>Dual</b>	DUAL I , DUAL II , DUAL I + II

#### Mono sound selection

If the stereo signal is weak in stereo reception, you can switch to mono. In mono reception, the clarity of sound is improved.

#### Language selection for dual language broadcast

a programme can be received in two languages (dual language), you can switch to DUAL I, DUAL II or DUAL I + II.

- DUAL I** Sends the primary broadcast language to the loudspeakers.
- DUAL II** Sends the secondary broadcast language to the loudspeakers.
- DUAL I+II** Sends a separate language to each loudspeaker.

### Nicam Reception

If the Monitor Set is equipped with a receiver for **NICAM** reception, high quality **NICAM** (Near Instantaneous Companding Audio Multiplex) digital sound can be received.

Sound output can be selected according to the type of broadcast received.

- 1 When **NICAM mono** is received, you can select **NICAM MONO** or **MONO**.
- 2 When **NICAM stereo** is received, you can select **NICAM STEREO** or **MONO**.  
If the stereo signal is weak, switch to **MONO**.
- 3 When **NICAM dual** is received, you can select **NICAM DUAL I**, **NICAM DUAL II** or **NICAM DUAL I+II** or **MONO**.

### Speaker Sound Output Selection

In **AV**, **RGB PC** and **HDMI** mode, you can select output sound for the left and right loudspeakers.

Select the sound output.

**L+R:** Audio signal from audio L input is sent to the left loudspeaker and audio signal from audio R input is sent to the right loudspeaker.

**L+L:** Audio signal from audio L input is sent to left and right loudspeakers.

**R+R:** Audio signal from audio R input is sent to left and right loudspeakers.

## TIME settings

- 1 Press **MENU** to access the main menu.
- 2 Press the Navigation buttons to scroll to **TIME** and press **OK**.
- 3 Press the Navigation buttons to scroll to the setting or option you want and press **OK**.
  - To return to the previous level, press **MENU**.
- 4 When you are finished, press **EXIT**.  
When you return to the previous menu, press **MENU**.

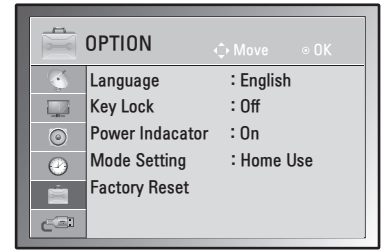


The available time settings are described in the following:

Setting	Description
<b>Clock</b>	You must set the time correctly before using on/off time function. If current time setting is erased by a power failure or the Monitor set is unplugged, reset the clock.
<b>Off Time/On Time</b>	<p>Sets the time to turn on or off the Monitor set automatically. To use this function, you should set the current time and date in the Clock menu.</p> <div style="border: 1px solid black; padding: 5px;"> <p><b>NOTE</b></p> <ul style="list-style-type: none"> <li>If you do not press any button within 2 hours after the Monitor set turns on by the On Time feature, the Monitor set enters the Standby mode automatically.</li> <li>If you set the On Time feature and turn the Monitor set off by pressing Main power switch, the On Time feature will not work. To activate the On Time feature, the Monitor set must be in Standby mode.</li> <li>If you set both Off Time and On Time features to the same time, the Off Time function overrides the On Time feature.</li> </ul> </div>
<b>Sleep Timer</b>	Sets the length of time until the Monitor set to turns off. When you turn the Monitor set off and turn it on again, the Sleep Timer will be set to off.
<b>Auto Off</b>	If the set is switched on and there is no input signal, it will switch off automatically after 15 minutes.

## OPTION settings

- 1 Press **MENU** to access the main menus.
- 2 Press the Navigation buttons to scroll to **OPTION** and press **OK**.
- 3 Press the Navigation buttons to scroll to the setting or option you want and press **OK**.
  - To return to the previous level, press **MENU**.
- 4 When you are finished, press **EXIT**.
  - When you return to the previous menu, press **MENU**.



The available option settings are described in the following:

Setting	Description				
<b>Language</b>	Selects a language for the display ( See p.19).				
<b>Key Lock</b>	<p>The Monitor set can be set so that the remote control is required to control it. This feature can be used to prevent unauthorized viewing.</p> <div style="border: 1px solid black; padding: 5px; margin-top: 10px;"> <p><b>NOTE</b></p> <ul style="list-style-type: none"> <li>In Key Lock 'On', if the Monitor set is turned off, press the  /   button on the Monitor set or POWER buttons on the remote control.</li> <li>With the Key Lock On, the display '  Key Lock On ' appears on the screen if any button on the front panel is pressed while viewing the Monitor set.</li> </ul> </div>				
<b>Power Indicator</b>	Sets to turn on or off the Power indicator on the Monitor set.				
<b>Mode Setting</b>	<p>Customizes the Monitor set settings to suit your preference. The initial setup screen will appear when you turn on the Monitor set for the first time.</p> <table border="1" style="width: 100%; margin-top: 5px;"> <thead> <tr> <th colspan="2">Setting</th> </tr> </thead> <tbody> <tr> <td style="width: 30%;">Mode Setting</td> <td>Selects <b>Home Use mode</b> for the home environment. Selects <b>Store Demo</b> mode for the retail environment.</td> </tr> </tbody> </table>	Setting		Mode Setting	Selects <b>Home Use mode</b> for the home environment. Selects <b>Store Demo</b> mode for the retail environment.
Setting					
Mode Setting	Selects <b>Home Use mode</b> for the home environment. Selects <b>Store Demo</b> mode for the retail environment.				
<b>Factory Reset</b>	This function initializes all settings.				



## USB settings

- 1 Press **MENU** to access the main menus.
- 2 Press the Navigation buttons to scroll to **USB** and press **OK**.
- 3 Press the Navigation buttons to scroll to the setting or option you want and press **OK**.
  - To return to the previous level, press **MENU**.
- 4 When you are finished, press **EXIT**.  
When you return to the previous menu, press **MENU**.



The available usb settings are described in the following:

Setting	Description
<b>Photo List</b>	You can view photo files on USB storage device. ( See p.22)
<b>Music List</b>	You can play music files on USB storage device. ( See p.23)

# MAKING CONNECTIONS

Connect various external devices to the Monitor set and switch input modes to select an external device. For more information about an external device's connection, refer to the manual supplied with each device. Available external devices are: HD receivers, DVD players, VCRs, audio systems, USB storage devices, PC, camcorders or cameras, gaming devices, and other external devices.



## NOTE

- If you record a TV program on a DVD recorder or VCR, make sure to connect the Monitor set signal input cable to the Monitor set through a DVD recorder or VCR. For more information about recording, refer to the manual supplied with the connected device.
- The external device connection may differ from the model.

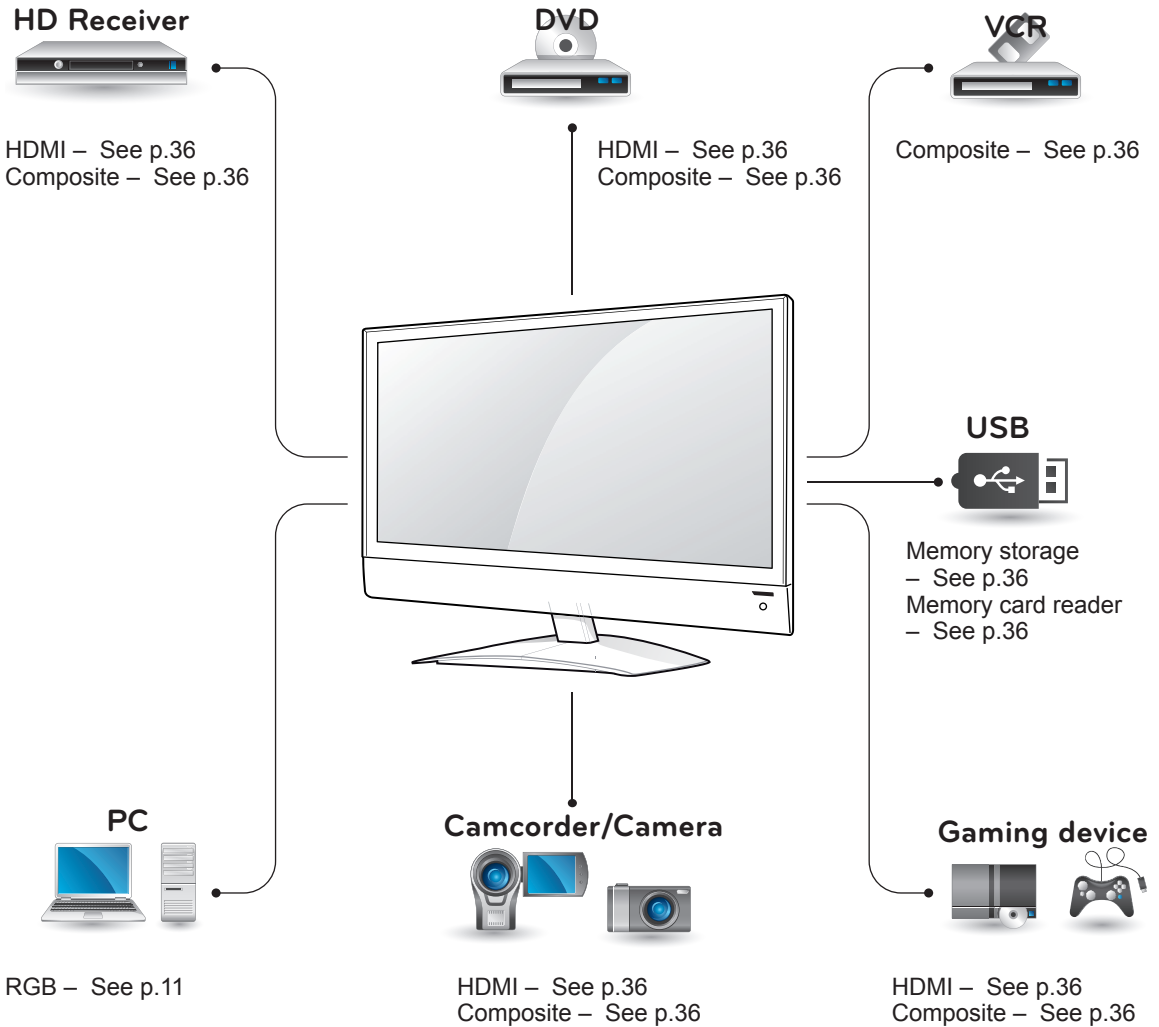
Connect external devices to the Monitor set by referring to the following table.

## Connection overview

Connection type	Video		Audio	
	Digital	Analog	Digital	Analog
HDMI (highly recommended)	○	-	○	-
RGB	-	○	-	○
Composite	-	○	-	○

Connect various external devices to the ports on the Monitor set's back panel.

- 1 Find an external device you want to connect to your Monitor set shown on the following illustration.
- 2 Check the connection type of the external device.
- 3 Go to the appropriate illustration and check the connection details.



**NOTE**

If you connect a gaming device to the Monitor set, use the cable supplied with the gaming device.

## Connecting to a Camcorder, Camera, HD receiver, DVD or VCR player

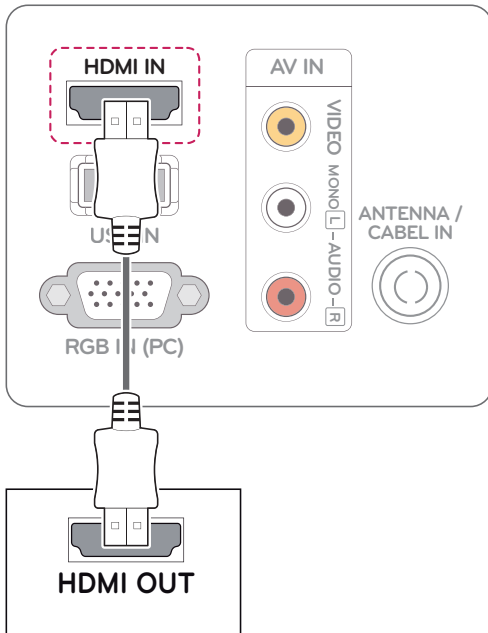
Connect a HD receiver, DVD, or VCR player to the Monitor set and select an appropriate input mode.

### HDMI connection

Transmits the digital video and audio signals from an external device to the Monitor set. Connect the external device and the Monitor set with the HDMI cable as shown on the following illustration.

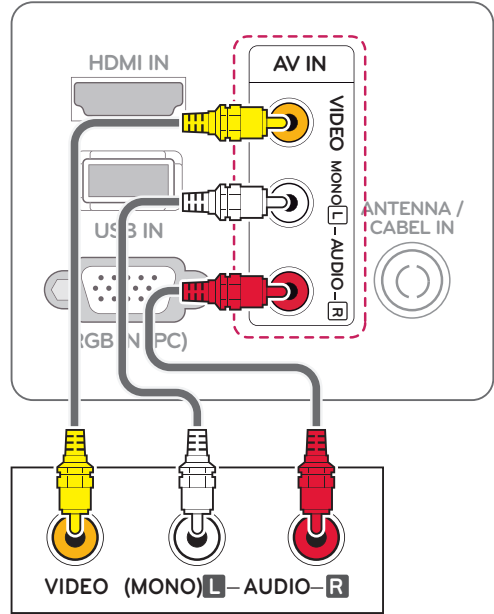
**NOTE**

- Use a High Speed HDMI™ Cable.
- High Speed HDMI™ Cables are tested to carry an HD signal up to 1080p and higher.



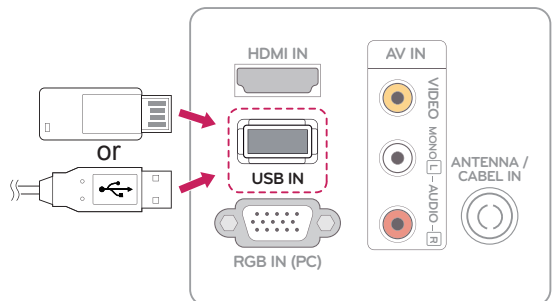
### Composite connection

Transmits the analog video and audio signals from an external device to the Monitor set. Connect the external device and the Monitor set with the composite cable as shown in the following illustration.



### Connecting to a USB

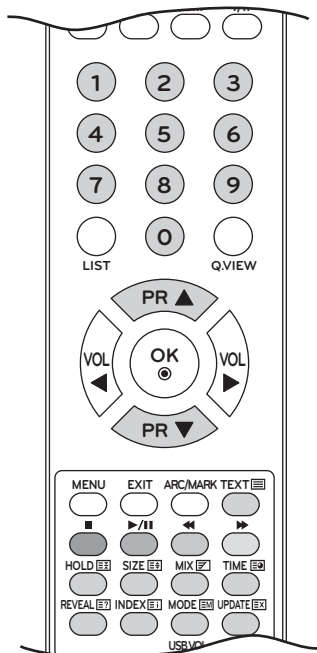
Connect a USB storage device such as a USB flash memory, external hard drive, MP3 player or a USB memory card reader to the Monitor set and access the USB menu to use various multimedia files. "Connecting USB storage devices" on See p.20 and "Browsing files" on See p.21



# TELETEXT

- This feature is not available in all countries.

Teletext is a free service broadcast by most **TV** stations which gives up to the minute information on news, weather, television programmes, share prices and many other topics. The teletext decoder of this **TV** can support the **SIMPLE**, **TOP** and **FASTTEXT** systems. **SIMPLE** (standard teletext) consists of a number of pages which are selected by directly entering the corresponding page number. **TOP** and **FASTTEXT** are more modern methods allowing quick and easy selection of teletext information.



## Switch On/Off

Press the **TEXT** button to switch to teletext. The initial page or last page appears on the screen. Two numbers, **TV** station name, date and time are displayed on the screen headline. The first page number indicates your selection, while the second shows the current page displayed. Press the **TEXT** or **EXIT** button to switch off teletext. The previous mode reappears.

## Simple Text

### Page selection

- 1 Enter the desired page number as a three-digit number with the **NUMBER** buttons. If during selection you press a wrong number, you must complete the three-digit number and then re-enter the correct page number.
- 2 The Navigation button can be used to select the previous or next page.

### Programming a colour button in LIST mode

If the TV is in SIMPLE text, TOP text or FASTTEXT mode, press the **EM** button to switch to LIST mode. Four teletext page numbers of your choice can be colour coded and easily selected by pressing the corresponding coloured button on the remote control handset.

- 1 Press a coloured button.
- 2 Using the **NUMBER** buttons, select the page you wish to programme.
- 3 Press the **OK** button. The selected page is stored as the selected page number, blinking once to confirm this. From now on, you can select this page with the same coloured button.
- 4 The three other coloured buttons are programmed in this way.

## Top Text

The user guide displays four fields-red, green, yellow and blue at the bottom of the screen. The yellow field denotes the next group and the blue field indicates the next block.

### Block / Group / Page Selection

- 1 With the **Blue** button you can progress from block to block.
- 2 Use the **Yellow** button to proceed to the next group with automatic overflow to the next block.
- 3 With the **Green** button you can proceed to the next existing page with automatic overflow to the next group. Alternatively, the **^** button can be used.
- 4 The **Red** button permits you to return to previous selection. Alternatively, the **^** button can be used.

### Direct Page Selection

As with SIMPLE teletext mode, you can select a page by entering it as a three digit number using the **NUMBER** buttons in **TOP** mode.

## Fasttext

The teletext pages are colour coded along the bottom of the screen and are selected by pressing the corresponding coloured button.

### Page selection

- 1 Press the **INDEX** button to select the index page.
- 2 You can select the pages which are colour coded along the bottom line with corresponding coloured buttons.
- 3 AS with SIMPLE teletext mode, you can select a page by entering its three digit page number with the **NUMBER** buttons in **FASTEXT** mode.
- 4 The **^** or **v** button can be used to select the preceding or following page.

## Special Teletext Function

### Hold

Stops the automatic page change which will occur if a teletext page consists of 2 or more sub pages.

The number of sub pages and the sub page displayed is, usually, shown on the screen below the time. When this menu is selected the stop symbol is displayed at the top left-hand corner of the screen and the automatic page change is inactive.

### Size

Selects double height text.

Press this button to enlarge the top half of the page.

Press this button again to enlarge the bottom half of the page.

Press this button again to return to the normal display.

### MIX

Displays the teletext pages superimposed on the TV picture.

To switch the TV picture off press this button again.

### Time

When viewing a TV programme, select this menu to display the time at the top right hand corner of the screen.

In the teletext mode, press this button to select a sub page number. The sub page number is displayed at the bottom of the screen. To hold or change the sub page, press the RED/GREEN, Navigation buttons or NUMBER buttons.

### Reveal

Select this menu to display concealed information, such as solutions to riddles or puzzles.

### Index

Select the each index page.

### Update

Displays the TV picture on the screen while waiting for a new teletext page. The display will appear at the top left hand corner of the screen. When the updated page is available then display will change to the page number. Select this menu again to view the updated teletext page.

# MAINTENANCE

Clean your Monitor set regularly to keep the best performance and to extend the product lifespan.



## CAUTION

- Make sure to turn the power off and disconnect the power cord and all other cables first.
- When the Monitor set is left unattended and unused for a long time, disconnect the power cord from the wall outlet to prevent possible damage from lightning or power surges.

## Screen and frame

To remove dust, wipe the surface with a dry and soft cloth.

To remove major dirt, wipe the surface with a soft cloth dampened in clean water or a diluted mild detergent. Then wipe immediately with a clean and dry cloth.



## CAUTION

- Do not push, rub, or hit the surface with your fingernail or a sharp object, as this may result in scratches on the screen and image distortions.
- Do not use any chemicals, such as waxes, benzene, alcohol, thinners, insecticides, air fresheners, lubricants, as these may damage the screen's finish and cause discolorations.

## Cabinet and stand

To remove dust, wipe the cabinet with a dry and soft cloth.

To remove major dirt, wipe the cabinet with a soft cloth dampened in a clean water or water containing a small amount of mild detergent.



## CAUTION

- Do not spray liquid onto the surface. If water enters the Monitor set, it may result in fire, electric shock, or malfunction.
- Do not use any chemicals as this may deteriorate the surface.

## Power cord

Remove the accumulated dust or dirt on the power cord regularly.



# TROUBLESHOOTING

## General

### The Monitor set does not operate properly

Problem	Resolution
The remote control doesn't work	<ul style="list-style-type: none"> <li>• Check to see if there is any object between the product and the remote control causing obstruction. Ensure you are pointing the remote control</li> <li>• Ensure that the batteries are installed with correct polarity (+ to +, - to -).</li> <li>• Ensure that the correct remote operating mode is set: TV, VCR, etc.</li> <li>• Install new batteries.</li> </ul>
Power is suddenly turned off	<ul style="list-style-type: none"> <li>• Is the sleep timer set?</li> <li>• Check the power control settings. Power interrupted.</li> <li>• If the Monitor set is switched on and there is no input signal, it will switch off automatically after 15 minutes to save the power consumption.</li> <li>• When a broken file was played in the USB mode, the Monitor set may turn off. Please check the file in your usb storage.</li> </ul>

### The video function does not work.

Problem	Resolution
No picture & No sound	<ul style="list-style-type: none"> <li>• Check whether the product is turned on.</li> <li>• Try another channel. The problem may be with the broadcast.</li> <li>• Is the power cord inserted into wall power outlet?</li> <li>• Check your antenna direction and/or location.</li> <li>• Test the wall power outlet, plug another product's power cord into the outlet where the product's power cord was plugged in.</li> </ul>
Picture appears slowly after switching on	<ul style="list-style-type: none"> <li>• This is normal, the image is muted during the product startup process. Please contact your service centre, if the picture has not appeared after five minutes.</li> </ul>
No Colour, poor colour, or poor picture	<ul style="list-style-type: none"> <li>• Adjust Colour in menu option.</li> <li>• Keep a sufficient distance between the product and the VCR.</li> <li>• Try another channel. The problem may be with the broadcast.</li> <li>• Are the video cables installed properly?</li> <li>• Activate any function to restore the brightness of the picture.</li> </ul>
Horizontal / vertical bars or picture shaking	<ul style="list-style-type: none"> <li>• Check for local interference such as an electrical appliance or power tool.</li> </ul>
Poor reception on some channels	<ul style="list-style-type: none"> <li>• Station or cable product experiencing problems, tune to another station.</li> <li>• Station signal is weak, reorient antenna to receive weaker station.</li> <li>• Check for sources of possible interference.</li> </ul>
Lines or streaks in pictures	<ul style="list-style-type: none"> <li>• Check antenna (Change the direction of the antenna).</li> </ul>
No picture when connecting HDMI	<ul style="list-style-type: none"> <li>• Check that your HDMI cable is High Speed HDMI Cable. If the HDMI cables are not High Speed HDMI Cable, flickering or no screen display can result. Please use the High Speed HDMI Cable.</li> </ul>

**The audio function does not work.**

Problem	Resolution
Picture OK & No sound	<ul style="list-style-type: none"> <li>• Press the <b>VOL +</b> or - button.</li> <li>• Sound muted? Press MUTE button.</li> <li>• Try another channel. The problem may be with the broadcast.</li> <li>• Are the audio cables installed properly?</li> </ul>
No output from one of the speakers	<ul style="list-style-type: none"> <li>• Adjust Balance in menu option.</li> </ul>
Unusual sound from inside the product	<ul style="list-style-type: none"> <li>• A change in ambient humidity or temperature may result in an unusual noise when the product is turned on or off and does not indicate a problem with the product.</li> </ul>
No sound when connecting HDMI or USB	<ul style="list-style-type: none"> <li>• Check HDMI cable is High Speed HDMI Cable.</li> <li>• Check USB cable over version 2.0.</li> <li>• If the sound is abnormal in the HDMI, check the audio format in your external equipments. <ul style="list-style-type: none"> <li>» Audio Supported format: PCM</li> </ul> </li> </ul>

**There is a problem with PICTURE settings.**

Problem	Resolution
When the user changes the picture settings, the Monitor set automatically converts back to the initial settings after a certain period of time.	<ul style="list-style-type: none"> <li>• It means that the Monitor set is currently set to <b>Store Demo</b> mode. To switch to Home use mode you should do the followings: From the Monitor set Menu, choose <b>OPTION</b> → Choose <b>Mode Setting</b> → Choose Home use. Now, you have completed switching to the Home use mode.</li> </ul>

## PC mode

**No image is displayed.**

Problem	Resolution
Power is on, power indicator is blue but the screen appears extremely dark.	<ul style="list-style-type: none"> <li>• Adjust brightness and contrast again.</li> </ul>
Does the 'Check signal cable' message appear?	<ul style="list-style-type: none"> <li>• The signal cable between PC and product is not connected. Check the signal cable.</li> <li>• Press the 'INPUT' button in the remote control to check the input signal.</li> </ul>

**'Unknown Product' message appears when the product is connected.**

Problem	Resolution
Did you install the driver?	<ul style="list-style-type: none"> <li>• Install the product driver, which is provided with the product, or download it from the web site. (<a href="http://www.lg.com">http://www.lg.com</a>)</li> <li>• See if the plug &amp; play function is supported by referring to the video card user's guide.</li> </ul>

**After-image appears on the product.**

Problem	Resolution
After-image appears when the product is turned off.	<ul style="list-style-type: none"> <li>If you use a fixed image for a long time, the pixels may be damaged quickly. Use the screen saver function.</li> </ul>

**Screen Colour is abnormal.**

Problem	Resolution
Screen has poor Colour resolution (16_Colours).	<ul style="list-style-type: none"> <li>Set screen Colour resolution to more than 24 bits (true Colour) Select control Pane → Display → Settings → Colour Table menu in Windows.</li> </ul>
Screen Colour is unstable or mono Colour.	<ul style="list-style-type: none"> <li>Check the connection status of the signal cable.</li> </ul>
Do back spots appear on the screen?	<ul style="list-style-type: none"> <li>Several pixels (red, green, white or black Colour) may appear on the screen, which can be attributable to the unique characteristics of the LCD panel. It is not a malfunction of the LCD.</li> </ul>

**The screen image looks abnormal.**

Problem	Resolution
Is the screen position wrong?	<ul style="list-style-type: none"> <li>Adjust the Position menu in OSD.</li> <li>See if the video card resolution and frequency are supported by the product. If the frequency is out of range, set to the recommended resolution in the Control Panel → Display → Setting menu.</li> </ul>
Do thin lines appear on the background screen?	<ul style="list-style-type: none"> <li>Adjust the Clock menu in OSD.</li> </ul>
Horizontal noise appears or the characters look blurred.	<ul style="list-style-type: none"> <li>Adjust the Phase menu in OSD.</li> </ul>

# SPECIFICATIONS

## M2241A

LCD Panel	Screen Type	546.86 mm Wide (21.53 inch) TFT (Thin Film Transistor) LCD (Liquid Crystal Display) Panel. Visible diagonal size : 546.86 mm
	Pixel Pitch	0.248 mm (H) x 0.248 mm (V)
Video Signal	Max. Resolution	1920 × 1080 @ 60Hz
	Recommended Resolution	1920 × 1080 @ 60Hz
	Horizontal Frequency	30 kHz to 69 kHz
	Vertical Frequency	56 Hz to 61 Hz
	Synchronization Type	Separate Sync
Input Connector		TV, D-Sub Analog, CVBS, HDMI
Power	Rated Voltage	AC 100-240 V~ 50/60 Hz 0.8 A
	Power Consumption	On Mode : 30 W (typ.) Sleep Mode 1 W (RGB) Off Mode ≤ 0.5 W
Dimensions (Width x Height x Depth)		520.8 mm x 422.7 mm x 166.4 mm
Weight		3.6 kg
Environmental conditions	Operating Temperature	10°C to 35 °C
	Operating Humidity	20 % to 80 %
	Storage Temperature	-10°C to 60 °C
	Storage Humidity	5 % to 90 %

Product specifications shown above may be changed without prior notice due to upgrade of product functions.

## M2341A

LCD Panel	Screen Type	584.2 mm Wide (23 inch) TFT (Thin Film Transistor) LCD (Liquid Crystal Display) Panel. Visible diagonal size : 584.2 mm
	Pixel Pitch	0.265 mm (H) x 0.265 mm (V)
Video Signal	Max. Resolution	1920 × 1080 @ 60Hz
	Recommended Resolution	1920 × 1080 @ 60Hz
	Horizontal Frequency	30 kHz to 69 kHz
	Vertical Frequency	56 Hz to 61 Hz
	Synchronization Type	Separate Sync
Input Connector		TV, D-Sub Analog, CVBS, HDMI
Power	Rated Voltage	AC 100-240 V~ 50/60 Hz 1.2 A
	Power Consumption	On Mode : 50 W (typ.) Sleep Mode 1 W (RGB) Off Mode ≤ 0.5 W
Dimensions (Width x Height x Depth) Weight		553.9 mm x 442.5 mm x 166.4 mm 4.4 kg
Environmental conditions	Operating Temperature	10°C to 35 °C
	Operating Humidity	20 % to 80 %
	Storage Temperature	-10°C to 60 °C
	Storage Humidity	5 % to 90 %

Product specifications shown above may be changed without prior notice due to upgrade of product functions.

## RGB (PC) supported mode

Resolution	Horizontal Frequency(kHz)	Vertical Frequency(Hz)
640 x 480	31.469	59.940
800 x 600	37.879	60.317
1024 x 768	48.363	60.000
1152 x 864	54.34	60.050
1280 x 960	60.000	60.000
1280 x 1024	63.981	60.020
1680 x 1050	64.674	59.883
1680 x 1050	65.290	59.954
1920 x 1080	67.500	60.000

## HDMI (DTV) mode

Resolution	Horizontal Frequency(kHz)	Vertical Frequency(Hz)
720 x 480	31.470	59.940
720 x 480	31.500	60.000
720 x 576	31.250	50.000
1280 x 720	44.960	59.940
1280 x 720	45.000	60.000
1280 x 720	37.500	50.000
1920 x 1080	33.720	59.940
1920 x 1080	33.750	60.000
1920 x 1080	28.125	50.000
1920 x 1080	67.432	59.940
1920 x 1080	67.500	60.000
1920 x 1080	56.250	50.000

 **NOTE**

- There may be interference relating to resolution, vertical pattern, contrast or brightness in PC mode. Change the PC mode to another resolution or change the refresh rate to another rate or adjust the brightness and contrast on the menu until the picture is clear. If the refresh rate of the PC graphic card can not be changed, change the PC graphic card or consult the manufacturer of the PC graphic card.
- The synchronization input waveform for Horizontal and Vertical frequencies are separate.
- Connect the signal cable from the monitor output port of the PC to the RGB (PC) port of the Monitor set
- If using a sound card, adjust PC sound as required.
- If the graphic card on the PC does not output analogue and digital RGB simultaneously, connect only one of either RGB to display the PC output on the Monitor set.
- If the graphic card on the PC does output analogue and digital RGB simultaneously, Monitor set to either RGB. (The other mode is set to Plug and Play automatically by the Monitor set.)
- If you use too long an RGB-PC cable that is too long, there may be interference on the screen. We recommend using under 5 m of cable. This provides the best picture quality.





Make sure to read the Safety Precautions before using the product.

Keep the Owner's Manual (CD) in an accessible place for future reference.

The model and serial number of the SET is located on the back and one side of the SET. Record it below should you ever need service.

MODEL \_\_\_\_\_

SERIAL \_\_\_\_\_