



ENGLISH

OWNER'S MANUAL

Micro Hi-Fi System

Please read this manual carefully before operating your set and retain it for future reference.

CM2520 (CM2520, CMS2521F)



MFL67565321

Safety Information



CAUTION: TO REDUCE THE RISK OF ELECTRIC SHOCK DO NOT REMOVE COVER (OR BACK) NO USER-SERVICEABLE PARTS INSIDE REFER SERVICING TO QUALIFIED SERVICE PERSONNEL.



This lightning flash with arrowhead symbol within an equilateral triangle is intended to alert the user to the presence of uninsulated dangerous voltage within the product's enclosure that may be of sufficient magnitude to constitute a risk of electric shock to persons.



The exclamation point within an equilateral triangle is intended to alert the user to the presence of important operating and maintenance (servicing) instructions in the literature accompanying the product.

WARNING: TO PREVENT FIRE OR ELECTRIC SHOCK HAZARD, DO NOT EXPOSE THIS PRODUCT TO RAIN OR MOISTURE.

WARNING: Do not install this equipment in a confined space such as a book case or similar unit.

CAUTION: Do not block any ventilation openings. Install in accordance with the manufacturer's instructions.

Slots and openings in the cabinet are provided for ventilation and to ensure reliable operation of the product and to protect it from over heating. The openings shall be never be blocked by placing the product on a bed, sofa, rug or other similar surface. This product shall not be placed in a built-in installation such as a bookcase or rack unless proper ventilation is provided or the manufacturer's instruction has been adhered to.



CAUTION: This product employs a Laser System. To ensure proper use of this product, please read this owner's manual carefully and retain it for future reference. Shall the unit require maintenance, contact an authorized service centre. Use of controls, adjustments or the performance of procedures other than those specified herein may result in hazardous radiation exposure. To prevent direct exposure to laser beam, do not try to open the enclosure.

CAUTION concerning the Power Cord

Most appliances recommend they be placed upon a dedicated circuit;

That is, a single outlet circuit which powers only that appliance and has no additional outlets or branch circuits. Check the specification page of this owner's manual to be certain. Do not overload wall outlets. Overloaded wall outlets, loose or damaged wall outlets, extension cords, frayed power cords, or damaged or cracked wire insulation are dangerous. Any of these conditions could result in electric shock or fire. Periodically examine the cord of your appliance, and if its appearance indicates damage or deterioration, unplug it, discontinue use of the appliance, and have the cord replaced with an exact replacement part by an authorized service centre. Protect the power cord from physical or mechanical abuse, such as being twisted, kinked, pinched, closed in a door, or walked upon. Pay particular attention to plugs, wall outlets, and the point where the cord exits the appliance. To disconnect power from the mains, pull out the mains cord plug. When installing the product, ensure that the plug is easily accessible.

This device is equipped with a portable battery or accumulator.

Safety way to remove the battery or the battery from the equipment: Remove the old battery or battery pack, follow the steps in reverse order than the assembly. To prevent contamination of the environment and bring on possible threat to human and animal health, the old battery or the battery put it in the appropriate container at designated collection points. Do not dispose of batteries or battery together with other waste. It is recommended that you use local, free reimbursement systems batteries and accumulators. The battery shall not be exposed to excessive heat such as sunshine, fire or the like.

CAUTION: The apparatus shall not be exposed to water (dripping or splashing) and no objects filled with liquids, such as vases, shall be placed on the apparatus.

Disposal of your old appliance



1. When this crossed-out wheeled bin symbol is attached to a product it means the product is covered by the European Directive 2002/96/EC.
2. All electrical and electronic products should be disposed of separately from the municipal waste stream via designated collection facilities appointed by the government or the local authorities.
3. The correct disposal of your old appliance will help prevent potential negative consequences for the environment and human health.
4. For more detailed information about disposal of your old appliance, please contact your city office, waste disposal service or the shop where you purchased the product.

Disposal of waste batteries/accumulators



1. When this crossed-out wheeled bin symbol is attached to batteries/accumulators of Your product it means they are covered by European Directive 2006/66/EC.
2. This symbol may be combined with chemical symbols for mercury(Hg), cadmium(Cd) or lead(Pb) if the battery Contains more that 0.0005% of mercury,0.002% of cadmium or 0.004% of lead.
3. All batteries/accumulators should be disposed separately from the municipal waste stream via designated collection facilities appointed by the government or the local authorities.
4. The correct disposal of Your old batteries/accumulators will help to prevent potential negative consequences for the environment, animal and human health.
5. For more detailed information about disposal of Your old batteries/accumulators, please contact Your city office, waste disposal service or the shop where You purchased the product.

You have to set the disc format option to [Mastered] in order to make the discs compatible with the LG players when formatting rewritable discs. When setting the option to Live File System, you cannot use it on LG players.

(Mastered/Live File System : Disc format system for Windows Vista)

Table of Contents

1 Getting Started

- 2 Safety Information
- 4 Table of Contents
- 6 Unique Features
- 6 Accessories
- 6 Playable file Requirement
 - 6 – MP3/WMA music file requirement
 - 6 – Compatible USB Devices
 - 6 – USB device requirement
- 7 Remote control
- 8 Front panel
- 9 Rear panel

2 Connecting

- 10 Connecting to speakers
 - 10 – Attaching the speakers to the unit
- 10 Optional Equipment Connection
 - 10 – USB Connection
 - 11 – PORT. IN Connection
 - 11 – PHONES Connection

3 Operating

- 12 Basic Operations
 - 12 – CD/USB Operations
 - 12 – Selecting a folder
 - 12 – Displaying file information (ID3 TAG)
- 13 Other Operations
 - 13 – Programmed Playback
 - 13 – Turn off the sound temporarily
- 13 Radio Operations
 - 13 – Listening to the radio
 - 13 – Improving poor FM reception
 - 14 – Presetting the Radio Stations
 - 14 – Deleting all the saved stations
- 14 Sound adjustment
 - 14 – Setting the surround mode
- 15 Setting the Clock
 - 15 – Setting the alarm
 - 16 – Sleep Timer Setting
- 16 – Dimmer

4 Troubleshooting

17 Troubleshooting

5 Appendix

18 Specifications

19 Maintenance

19 – Handling the Unit

19 – Notes on Discs

19 Trademarks and Licenses

1

2

3

4

5

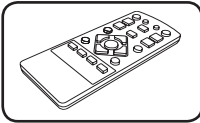
Unique Features

Portable In

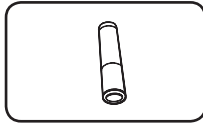
Listens to music from your portable device.
(MP3, Notebook, etc)

Accessories

Please check and identify the supplied accessories.



Remote Control (1)



Battery (1)

Playable file Requirement

MP3/WMA music file requirement

MP3/ WMA file compatibility with this unit is limited as follows.

- Sampling Frequency : 32 - 48 kHz (MP3), 32 - 48 kHz (WMA)
- Bit rate : 32 - 320 kbps (MP3), 40 - 320 kbps (WMA)
- Maximum files : Under 999
- File extensions : ".mp3"/".wma"
- CD-ROM file format : ISO 9660/JOLIET
- We recommend that you use "Easy-CD Creator", which creates an ISO 9660 file system.

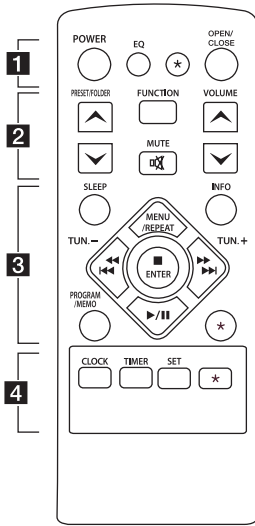
Compatible USB Devices

- MP3 Player : Flash type MP3 player.
- USB Flash Drive :
Devices that support USB 2.0 or USB 1.1.
- The USB function of this unit does not support all USB devices.

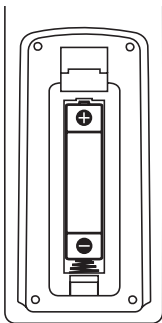
USB device requirement

- Devices which require additional program installation when you have connected it to a computer, are not supported.
- Do not extract the USB device while in operation.
- For a large capacity USB, it may take longer than a few minute to be searched.
- To prevent data loss, back up all data.
- If you use a USB extension cable or USB hub, the USB device is not recognized.
- Using NTFS file system is not supported.
(Only FAT(16/32) file system is supported.)
- This unit is not supported when the total number of files is 1 000 or more.
- External HDD, Card readers, Locked devices, or hard type USB devices are not supported.
- USB port of the unit cannot be connected to PC.
The unit cannot be used as a storage device.

Remote control



Battery Installation



Remove the battery cover on the rear of the Remote Control, and insert one (size AAA) battery with **+** and **-** matched correctly.

..... **1**

POWER : Switches the unit ON or OFF.

EQ : Chooses sound impressions.
***** : The button is not available for any function.

OPEN/CLOSE : Opens and closes the disc tray.

..... **2**

PRESET/FOLDER \wedge/\vee :

- Searches for a folder of MP3/ WMA files. When a CD/ USB containing MP3/ WMA files in several folders is being played, press **PRESET/FOLDER \wedge/\vee** to select the folder you want to play.

- Choose a preset number for a radio station.

FUNCTION : Selects the function and input source.

MUTE X : Mutes the sound.

VOLUME \wedge/\vee : Adjusts speaker volume.

..... **3**

SLEEP : Sets the system to turn off automatically at a specified time. (Dimmer : The display window will be darkened by half.)

INFO : Sees informations about your music. MP3 files often come with ID3 tags. The tag gives the Title, Artist, Album or Time information.

PROGRAM/MEMO :

- Stores radio stations.

- Creates a playlist you want to listen to.

***** : The button is not available for any function.

MENU/REPEAT : Listens to your tracks/files repeatedly or randomly.

TUN. -/+ : Selects the radio station.

◀◀◀/▶▶▶ (Skip/Search) :

- Skips Fast backward or Forward.
 - Searches for a section within a track/file.

■ ENTER : Stops playback.

▶/|| (Play/Pause) : Starts or pauses playback.

..... **4**

CLOCK : For setting the clock and checking the time.

TIMER : With the TIMER function you can turn CD, USB play and TUNER reception on or off at a desired time.

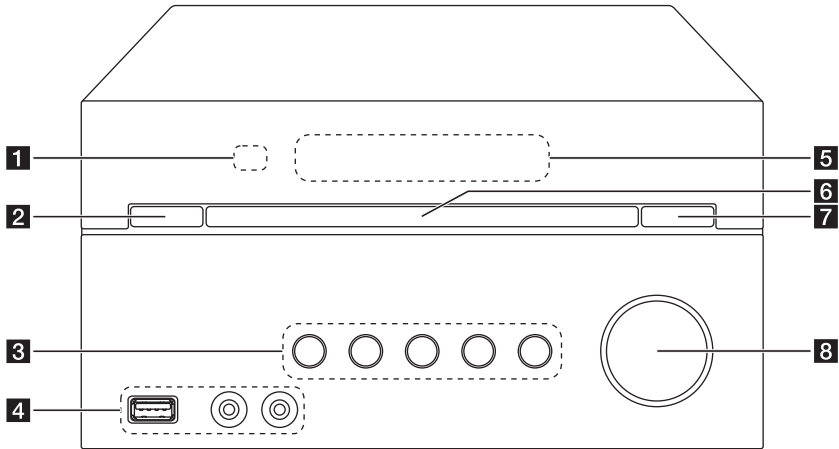
SET : Confirms the setting.

***** : The button is not available for any function.

Front panel

1

Getting Started



1 Remote sensor

2  (Power ON/OFF)

3 **F**
Selects the function or input source.

>||
Starts or pauses playback.

□
Stops playback.

TUN. -/+
Selects the radio station.

|<</>>| (Skip/Search)

4 USB Port
You can play sound files by connecting a USB device.

PORT. IN

PHONES

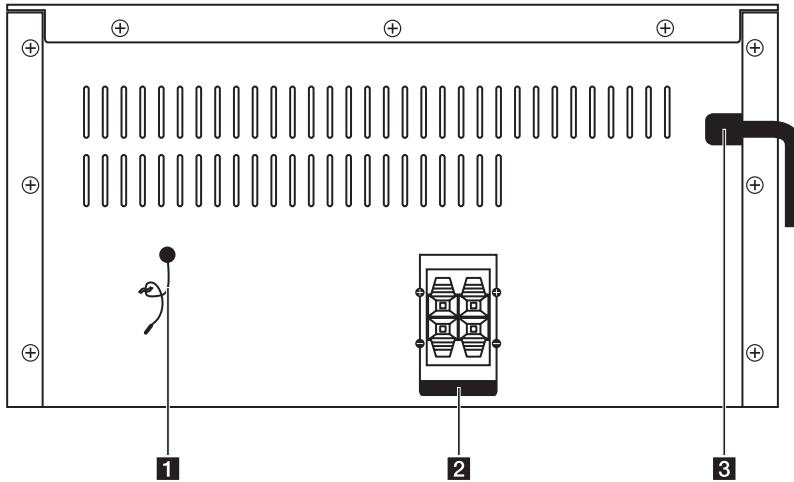
5 Display window

6 Disc tray

7 **△** (Open/Close)
Opens and closes the disc tray.

8 **VOL. +/-**

Rear panel



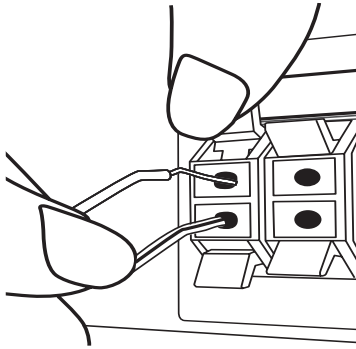
- 1** FM ANTENNA
- 2** SPEAKERS terminal (L/R)
- 3** Power cord

Connecting to speakers

Attaching the speakers to the unit

To connect the cable to the unit, press each plastic finger pad to open the connection terminals on the unit. Insert the wire and release the finger pad.

Connect the black wire to the terminals marked - (minus) and the other end to the terminals marked + (plus).



! Caution

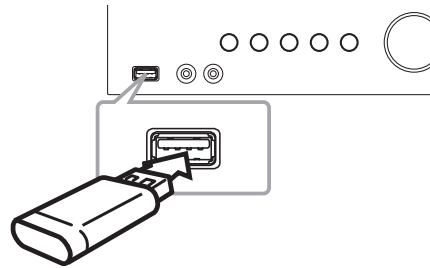
The speakers contain magnet parts, so color irregularity may occur on the TV screen or PC monitor screen. Please use the speakers far away from either TV screen or PC monitor.

| Colour | Speaker | Position |
|--------|---------|-------------|
| Red | Front | Front right |
| White | Front | Front left |

Optional Equipment Connection

USB Connection

Connect the USB Memory (or MP3 player, etc.) to the USB port on the front of the unit.

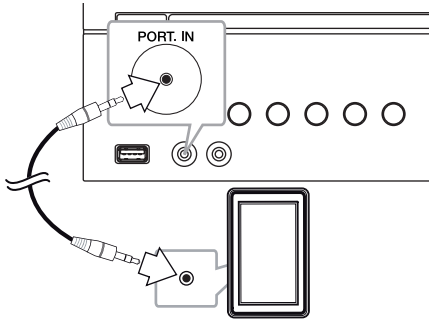


! Note

- Removing the USB Device from the unit
 - Choose a different function/mode or press **ENTER** on the remote control or **□** on the unit twice in a row.
 - Remove the USB device from the unit.

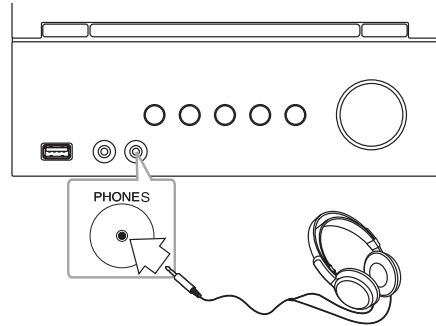
PORT. IN Connection

Connect an output (earphone or line out) of portable device (MP3 or PMP etc) to the PORT. IN connector.



PHONES Connection

Connect a pair of stereo headphones (\varnothing 3.5 mm phone plug) to PHONES jack on the unit for private listening.



! Note

You can't hear any sound from speakers, while the headphones plug is inserted in the PHONES jack.

2

Connecting

Basic Operations

CD/USB Operations

1. Insert the disc by pressing **OPEN/CLOSE** on the remote control or **△** on the unit.
Or connect the USB device to the USB port.
2. Select the CD or USB function by pressing **FUNCTION** on the remote control or **F** on the unit.
3. Select a track/file you want to play by pressing **◀◀◀/▶▶▶▶** on the remote control or **|◀◀/▶▶|** on the unit.

| To | Do this |
|--------------------------------------|--|
| Stop | Press ■ ENTER on the remote control or □ on the unit. |
| Playback | Press ▶/ on the remote control or > on the unit. |
| Pause | During playback, press ▶/ on the remote control or > on the unit. |
| Skip to the next/previous track/file | Press ◀◀/▶▶ on the unit or ◀◀◀/▶▶▶▶ on the remote control to skip the track/file in stop status. During playback, press >>> on the unit or ▶▶▶▶ on the remote control to go to the next track/file. Playing less than 2 seconds, press ◀◀ on the unit or ◀◀◀◀ on the remote control to go to the previous track/file. Playing after 3 seconds, press ◀◀ on the unit or ◀◀◀◀ on the remote control to go to the beginning of the track/file. |
| Search for a section within a track | Press and hold ◀◀/▶▶ on the unit or ◀◀◀◀/▶▶▶▶ on the remote control during playback and release it at the point you want to listen to. |
| Play repeatedly or randomly | Press MENU/REPEAT on the remote control repeatedly, the display change in the following order. RPT1 -> RPT DIR (only MP3/WMA) -> RPT ALL -> RANDOM -> OFF |

Selecting a folder

1. Press **PRESET/FOLDER ^/V** on the remote control repeatedly until a desired folder appears.
2. Press **▶/||** on the remote control or **>||** on the unit to play it. The first file of folder will play.

Displaying file information (ID3 TAG)

While playing an MP3 file containing file information, you can display the information by pressing **INFO**.

Other Operations

Programmed Playback

The program function enables you to store your favorite files from any disc or USB device.


A program can contain 20 tracks/files.

1. Insert a CD or a USB and wait for it to be ordered.
2. Press **PROGRAM/MEMO** on the remote control in stop status.
3. Press **◀◀◀/▶▶▶▶▶** on the remote control or **◀◀/▶▶** on the unit to select a track/file.
4. Press **PROGRAM/MEMO** on the remote control again to save and select a next track/file.
5. Press **▶/||** on the remote control or **>||** on the unit to play the programmed music tracks/files.
6. To clear your selection, press **■ ENTER** on the remote control or **□** on the unit twice.

Note

The programs are also cleared when the disc or USB device is removed, the unit is powered off or the function is switched to others.

Turn off the sound temporarily

Press **MUTE**  on the remote control to mute your unit.

You can mute your unit, for example, to answer the telephone, the mute symbol "**M**" is displayed in the display window.

To cancel it, press **MUTE**  again on the remote control or change the volume level.

Radio Operations

Listening to the radio

1. Press **FUNCTION** on the remote control or **F** on the unit until FM appears in the display window. The last received station is tuned in.
2. Press and hold **TUN. -/+** for about 2 seconds until the frequency indication starts to change, then release. Scanning stops when the unit tunes in a station.

Or

Press **TUN. -/+** repeatedly.

3. Adjust the volume by pressing **VOL+/-** on the unit or **VOLUME ^/V** on the remote control repeatedly.

Improving poor FM reception

Press **▶/||** on the remote control. This will change the tuner from stereo to mono and usually improve the reception.

Presetting the Radio Stations

You can preset 50 stations for FM.

Before tuning, make sure to turn down the volume.

1. Press **FUNCTION** on the remote control or **F** on the unit until FM appears in the display window.
2. Select the desired frequency by pressing **TUN. -/+**.
3. Press **PROGRAM/MEMORY**. A preset number will blink in the display window.
4. Press **PRESET/FOLDER \wedge /V** to select the preset number you want.
5. Press **PROGRAM/MEMO**. The station is stored.
6. Repeat steps 2 to 5 to store other stations.
7. To listen a preset station, press **PRESET/FOLDER \wedge /V**.

Deleting all the saved stations

1. Press and hold **PROGRAM/MEMO** for two seconds. "CLEAR" will flash up on the unit display.
2. Press **PROGRAM/MEMO** to erase all saved radio stations.

Sound adjustment

Setting the surround mode

This system has a number of pre-set surround sound fields. You can select a desired sound mode by using **EQ**.

The displayed items for the Equalizer may be different depending on sound sources and effects.

| On Display | Description |
|------------------------|---|
| AUTO EQ | Sets the sound equalizer on the mode that is the most similar to the genre which is included in the MP3 ID3 tag of song files. |
| POP CLASSIC ROCK | This program lends an enthusiastic atmosphere to the sound, giving you the feeling you are at an actual pop, classic or rock concert. |
| BASS | Reinforce the treble, bass and surround sound effect. |
| BYPASS | You can enjoy the sound without equalizer effect. |

Note

Maybe you need reset the surround mode, after switching the input, sometimes even after the sound track changed.

Setting the Clock

1. Turn the unit on.
2. Press **CLOCK** for at least 2 seconds.
3. Choose time mode by pressing **◀◀◀◀/▶▶▶▶**.
- AM 12:00 (for an AM and PM display)
or 0:00 (for a 24 hour display)
4. Press **SET** to confirm your selection.
5. Select the hours by pressing **◀◀◀◀/▶▶▶▶**.
6. Press **SET**.
7. Select the minutes by pressing **◀◀◀◀/▶▶▶▶**.
8. Press **SET**.

Setting the alarm

You can use the unit as an alarm clock. You have to set the clock before setting the alarm.

1. Turn the unit on.
2. Press **TIMER**. Each of functions flashes.
3. Press **SET** when the function you want to be woken by is showing.
4. "ON TIME" will be displayed. This is your desired time to the unit turns on.
Press **◀◀◀◀/▶▶▶▶** to change the hours and minutes and press **SET** to save.
5. The "OFF TIME" will be displayed. This is your desired time to the unit turns off.
Press **◀◀◀◀/▶▶▶▶** to change the hours and minutes and press **SET** to save.
6. Press **◀◀◀◀/▶▶▶▶** to change the volume and press **SET** to save.

! Note

- If you set the clock time and alarm, you can check the time by pressing **CLOCK** or the alarm by pressing **TIMER** even when the unit is turned off.
- If the alarm is already set, press **TIMER** once to cancel the alarm. To activate the alarm, press **TIMER** once again.
- If the clock time or the alarm is already set, press and hold **CLOCK** or **TIMER** for at least 2 seconds to reset the clock timer or the alarm.

Sleep Timer Setting

Press **SLEEP** repeatedly to select delay time between 10 and 180 minutes. After the delay time, the unit will be turned off.

To cancel the sleep function, press **SLEEP** repeatedly until "SLEEP 10" appears, and then press **SLEEP** once again while "SLEEP 10" is displayed.

Note

- You can check the remaining time before the unit is turned off.
- Press **SLEEP**. The remaining time appears in the display window.

3

Operating


Dimmer

Press **SLEEP** once. The display window will be darkened by half. To cancel it, press **SLEEP** repeatedly until dim off.

Troubleshooting

| Problem | Cause & Correction |
|---|---|
| No Power. | <ul style="list-style-type: none"> • The power cord is not plugged in. Plug in the power cord. • Check whether electricity failed. Check the condition by operating other electronic devices. |
| No sound. | <ul style="list-style-type: none"> • Check whether you select right function. Press FUNCTION and check the selected function. • Speaker cables are not connect correctly. Connect the speaker cables correctly. • The volume is set to minimum. Use the volume controller to adjust the volume. |
| The unit does not start playback. | <ul style="list-style-type: none"> • An unplayable disc is inserted. Insert a playable disc. • No disc is inserted. Insert a disc. • The disc is dirty. Clean the disc. (Refer to the page 19) • The disc is inserted upside down. Place the disc with the label or printed side facing upwards. |
| Radio stations cannot be tuned in properly. | <ul style="list-style-type: none"> • The antenna is positioned poorly. Adjust its position. • The signal strength of the radio station is too weak. Tune to the station manually. • No stations have been preset or preset stations have been cleared (when tuning by scanning preset channels). Preset some radio stations, see page 14 for details. |
| The remote control does not work properly. | <ul style="list-style-type: none"> • The remote control is not pointed at the remote sensor of the unit. Point the remote control at the remote sensor of the unit. • The remote control is too far from the unit. Operate the remote control within about 16 ft (5 m). • There is an obstacle in the path of the remote control and the unit. Remove the obstacle. • The battery in the remote control is exhausted. Replace the battery with new one. |

Specifications

| General | |
|----------------------------------|---|
| Power supply | 200 - 240 V, 50 / 60 Hz |
| Power consumption | 35 W |
| Net Weight | 2.3 kg |
| External dimensions (W x H x D) | 230 x 125 x 243 mm |
| Operating conditions Temperature | 5 °C to 35 °C (41 °F to 95 °F) |
| Operating humidity | 5 % to 85 % |
| Bus Power Supply | DC 5 V  500 mA |

| Tuner | |
|-----------------|--|
| FM Tuning Range | 87.5 to 108.0 MHz or 87.50 to 108.00 MHz |

| Amplifier | |
|--------------|-------------|
| Output Power | 30 W + 30 W |

| CD | |
|-----------------------|-----------------|
| Frequency Response | 40 Hz to 20 kHz |
| Signal-to-noise ratio | 70 dB |
| Dynamic range | 55 dB |

| Speakers | |
|------------------------|--------------------|
| Type | 2 Way 2 Speaker |
| Impedance | 6 Ω |
| Rated Input Power | 30 W |
| Max. Input Power | 60 W |
| Net Dimensions (WxHxD) | 150 x 251 x 170 mm |
| Net Weight (1EA) | 1.56 kg |

- Design and specifications are subject to change without notice.

Maintenance

Handling the Unit

When shipping the unit

Please save the original shipping carton and packing materials. If you need to ship the unit, for maximum protection, re-pack the unit as it was originally packed at the factory.

Keeping the exterior surfaces clean

Do not use volatile liquids such as insecticide spray near the unit.

Wiping with strong pressure may damage the surface.

Do not leave rubber or plastic products in contact with the unit for a long period of time.

Cleaning the unit

To clean the player, use a soft, dry cloth. If the surfaces are extremely dirty, use a soft cloth lightly moistened with a mild detergent solution. Do not use strong solvents such as alcohol, benzine, or thinner, as these might damage the surface of the unit.

Maintaining the Unit

The unit is a high-tech, precision device. If the optical pick-up lens and disc drive parts are dirty or worn, the picture quality could be diminished. For details, please contact your nearest authorized service centre.

Notes on Discs

Handling Discs

Never stick paper or tape on the disc.

Storing Discs

After playing, store the disc in its case. Do not expose the disc to direct sunlight or sources of heat and never leave it in a parked car exposed to direct sunlight.

Cleaning Discs

Do not use strong solvents such as alcohol, benzene, thinner, commercially available cleaners, or anti-static spray intended for old vinyl records.

Trademarks and Licenses



| | Телефон | Режим работы | Интернет |
|------------|-----------------------------------|---|---|
| Россия | 8-800-200-7676 | Круглосуточно | http://www.lg.com |
| Беларусь | 8-820-0071-1111 | | |
| Латвия | 8-0003-271 | | |
| Литва | 8-800-30-800 | | |
| Эстония | 800-9990 | | |
| Украина | 0-800-303-000 | 8:00 - 21:00 (Пн.-Пят.) 9:00 - 18:00 (Суб., Вс.) | |
| Казахстан | 8-8000-805-805 | 9:00 - 18:00 (Пн.-Пят.) 9:00 - 18:00 (Суб.) | |
| | 2255 (для мобильных телефонов) | | |
| Кыргызстан | 8-0000-710-005 | Круглосуточно | |
| Узбекистан | | | |

Российская Федерация

Импортер LG Electronics RUS

Адрес импортера 143160 Российская Федерация, Московская область, Рузский район, сельское поселение Дороховское, 86 км. Минского шоссе, д.9

Адрес производителя : ВТРИК Интернешнл Трейдинг Ко, Лтд Китай, провинция Гуандун, г. Гуанчжоу, Панью Боро, Даши таун, Шибай Индастриал роад, Тврек Девей Индастриал Гарден

Сделано в Китае

Қазақстан Республикасы

“All the claims (or proposals) related to the quality of products, as well as repairs and technical services should be addressed to “LG Electronics Almaty Kazakhstan”, 050061, Kazakhstan, Almaty, Molodezhnaya Street 2A. Information about the other service centers can be provided by customer support service.

«Претензии (предложения) по качеству товара, ремонт и техническое обслуживание товара принимает: АО «Эл Джи Электроникс Алматы Казахстан», 050061, Республика Казахстан, г. Алматы, ул. Молодежная, 2А. Информацию о других сервисных центрах можно получить в службе поддержки клиентов».

Қазақстан Республикасы территориясында тұтынушылардан келіп түскен талаптар мен ұсыныстарды қарайтын және тауарды жөндеу мен техникалық қызмет көрсететін ұжым: АҚ «Эл Джи Электроникс Алматы Казахстан», 050061, Қазақстан Республикасы, Алматы қ., Молодежная, 2А. Басқа сервис орталықтары жайында мағлұматты “Тұтынушыға қызмет көрсету орталығына” телефон шалу арқылы білуге болады



Қытайда жасалған