

OWNER'S MANUAL

CLOUD MONITOR (LED LCD MONITOR)

Please read the safety information carefully before using the product.

CLOUD Monitor(LED LCD Monitor) Model list
23CAT42K

TABLE OF CONTENTS

3 ASSEMBLING AND PREPARING

- 3 Unpacking
- 4 Parts and buttons
- 5 Lifting and moving the Monitor
- 5 Setting Up the Monitor set
 - 5 - Attaching the Stand Base
 - 6 - Detaching the stand base
 - 6 - Detaching the stand body
 - 7 - Mounting on a table
 - 7 - Adjusting the stand height
 - 8 - Adjusting the angle
 - 8 - Using the Kensington locking device
 - 9 - Swivel stand
 - 9 - Using the Pivot function
 - 10 - Installing the wall mount plate
 - 10 - Mounting on a wall

12 USING THE MONITOR SET

- 12 Connecting Input Signal Cable
 - 12 - D-SUB IN connection - PC
 - 12 - Self Image Adjustment

13 USING THE CITRIX CLOUD MONITOR SET

- 13 Connecting LAN/Peripherals
 - 13 - LAN connection
 - 13 - DVI connection
 - 14 - Peripheral device connection

15 CUSTOMIZING SETTINGS

- 15 Accessing The Main Menus
- 16 Customizing Settings
 - 16 - Menu Settings
 - 17 - PICTURE
 - 18 - COLOR
 - 19 - DISPLAY

- 20 - OTHERS
- 21 - Volume (Only supported in CLOUD)

22 TROUBLESHOOTING

24 PRODUCT SPECIFICATION

- 25 Preset Mode
- 25 Power Indicator

26 PROPER POSTURE

- 26 Proper posture for using the monitor

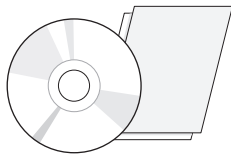
27 USING CITRIX CLOUD MONITOR

- 27 Login screen
- 27 Power Button
- 28 Settings button:
- 33 Information button

ASSEMBLING AND PREPARING

Unpacking

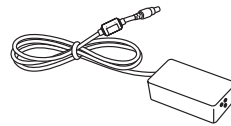
Please check whether all the components are included in the box before using the product. If there are missing components, contact the retail store where you purchased the product. Note that the product and components may look different from those shown here.



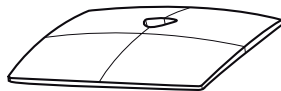
User Manual/Card



Power Cord



Adaptor



Stand Base



**15-pin D-SUB Signal Cable
(option)**



CAUTION

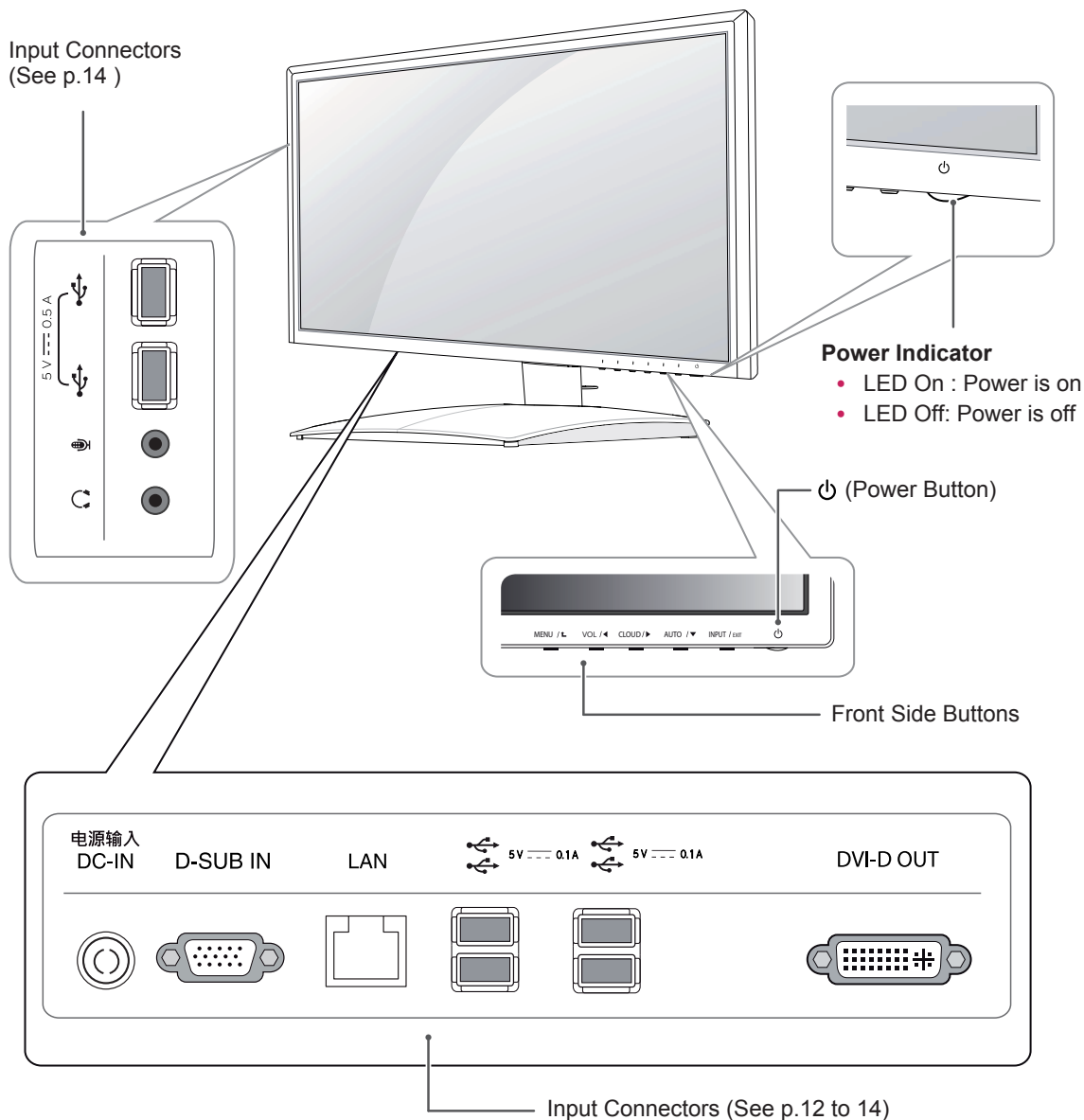
- Only use an approved LG power adapter.
- Damage caused by other power adapters is not covered by warranty.



NOTE

- Note that the components may look different from those shown here.
- Without prior notice, all information and specifications in this manual are subject to change to improve the performance of the product.
- To purchase optional accessories, visit an electronics store or online shopping site or contact the retail store where you purchased the product.

Parts and buttons



CAUTION

- Use a DVI-D cable for the DVI-D OUT port. If you connect other types of cable to the port, the video may not be displayed correctly.



CAUTION



- This part is only used for service when a problem occurs in the product and it needs to be repaired.

Lifting and moving the Monitor

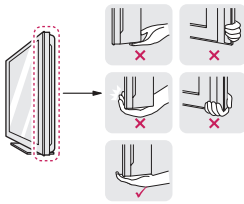
Please heed the following information when moving the monitor.



CAUTION

- Avoid touching the screen at all times, as this may result in damage to the screen or pixels.

- It is recommended to move the Monitor in the box or packing material that the Monitor originally came in.
- Before moving or lifting the Monitor, disconnect the power cord and all cables.
- Hold the top and bottom of the Monitor frame firmly. Make sure not to hold the transparent part area.



- When holding the Monitor, the screen should face away from you to prevent the screen from scratches.



- When transporting the Monitor, do not expose the Monitor to jolts or excessive vibration.
- When transporting the Monitor, keep the Monitor upright, never turn the Monitor on its side, or tilt towards the left or right.

Setting Up the Monitor set

Attaching the Stand Base

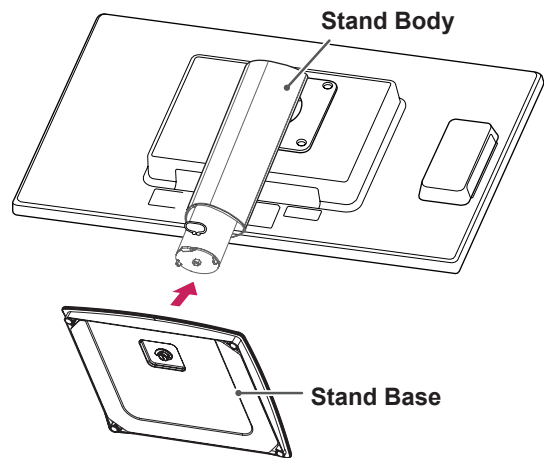
- 1 Place the monitor's screen face down.



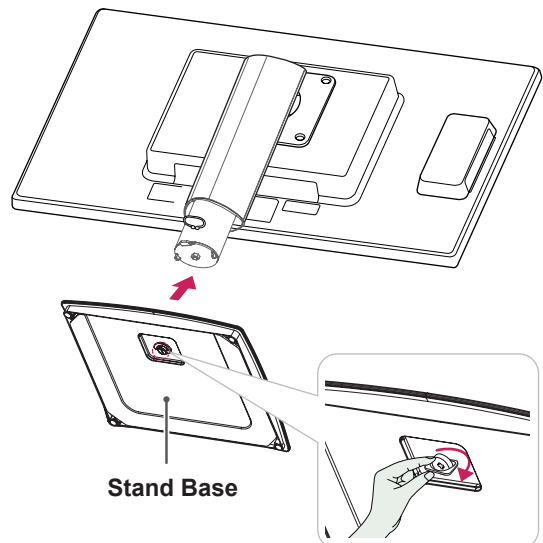
CAUTION

- To protect the screen from scratches, cover the surface with a soft cloth.

- 2 Check the **position (at the front and rear)** of the stand body, then mount the **stand base** on the **stand body** as shown in the figure.

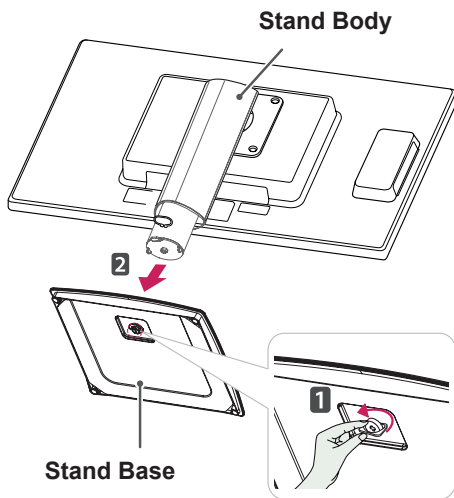


- 3 Using a coin, turn the screw clockwise to secure the **stand base**.



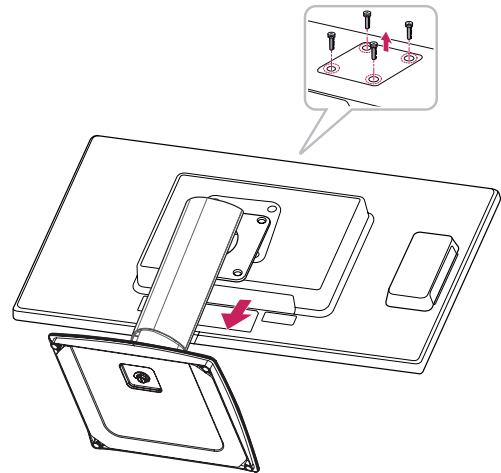
Detaching the stand base

- 1 Place the monitor's screen face down. To protect the screen from scratches, cover the surface with a soft cloth.
- 2 Using a coin, turn the screw in the stand base counterclockwise. Detach the **stand base** from the **stand body**.



Detaching the stand body

- 1 Place the monitor's screen face down. To protect the screen from scratches, cover the surface with a soft cloth.
- 2 Using a screwdriver, remove the four screws and detach the stand from the monitor.



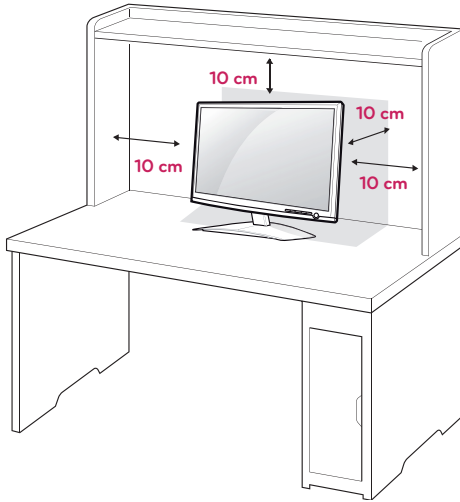
CAUTION

- The components appearing in the illustrations may look different from the actual product.
- Do not carry the monitor upside-down as this may cause it to fall off its stand, resulting in damage or injury.
- To avoid damaging the screen when lifting or moving the monitor, only hold the stand or the plastic cover. This avoids putting unnecessary pressure on the screen.
- Only remove the tape and the locking pin when the monitor is mounted on the stand base and is in an upright position. **Otherwise, the stand body may protrude, which may lead to injury.**

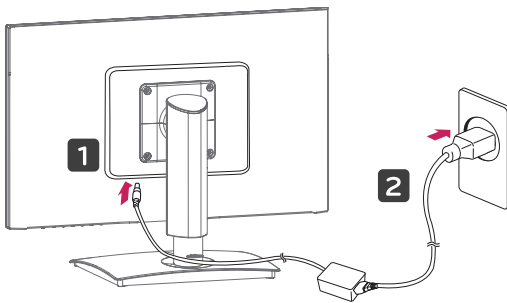
Mounting on a table


- 1 Lift the monitor and place it on the table in an upright position.

Install at least **10 cm** away from the wall to ensure sufficient ventilation.



- 2 Connect the adaptor to the monitor, then plug the power cord into the wall outlet.



- 3 Press the  (Power) button on the front of the monitor to turn on the monitor.



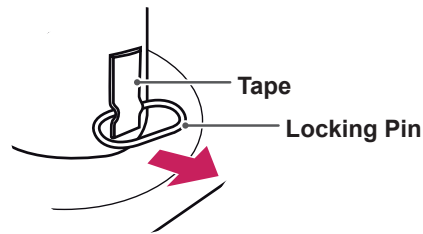
CAUTION

- Unplug the power cord prior to moving or installing the monitor. There is risk of electric shock.

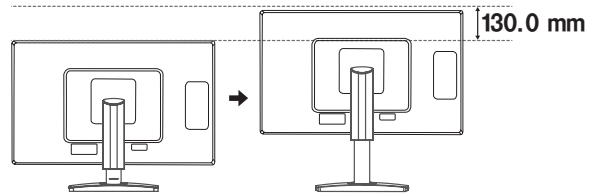
Adjusting the stand height

- 1 Place the monitor mounted on the stand base in an upright position.
- 2 Remove the **tape** attached at the bottom rear of the **stand body**, then pull out the **locking pin**.

Stand Body



- 3 The height can be adjusted up to **130.0 mm**.

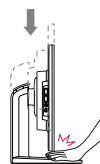


CAUTION

- Once the pin is removed, it is not necessary to re-insert it to adjust the height.



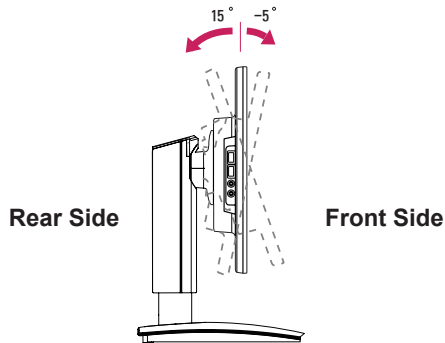
WARNING



- Do not put your fingers or hand between the screen and the base (chassis) when adjusting the screen's height.

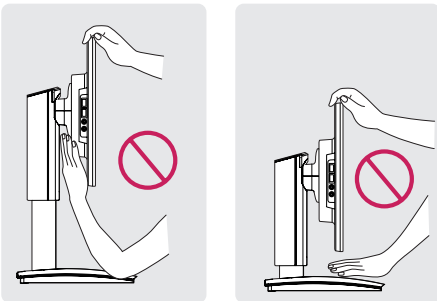
Adjusting the angle

- 1 Place the monitor mounted on the stand base in an upright position.
- 2 Adjust the angle of the screen. The angle of the screen can be adjusted up to 5° forwards and 15° backwards for a comfortable viewing experience.

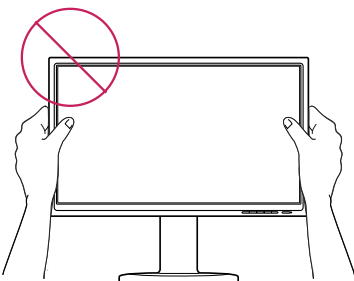


! WARNING

- To avoid injury to the fingers when adjusting the screen, do not hold as illustrated below.



- Be careful not to touch or press the screen area when adjusting the angle of the monitor.

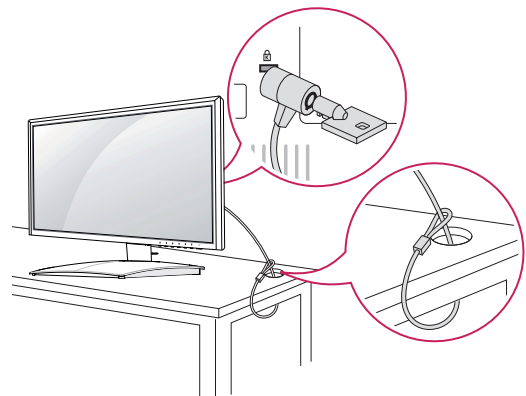


Using the Kensington locking device

The connector for the Kensington lock is located on the rear of the monitor.

For more information on installation and usage, refer to the Kensington lock user manual or visit the website at <http://www.kensington.com>.

Connect the monitor to the table with the Kensington lock cable.



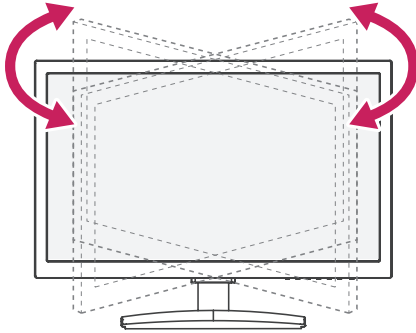
! NOTE

- Using the Kensington lock is optional. The accessories can be purchased at your local electronics store.

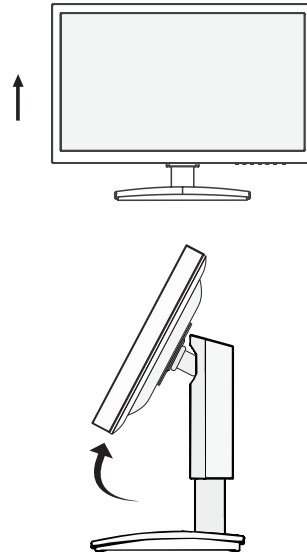
Swivel stand

- Image shown may differ from your Monitor set.

- Swivel 90 degrees and adjust the angle of the Monitor set to suit your view.



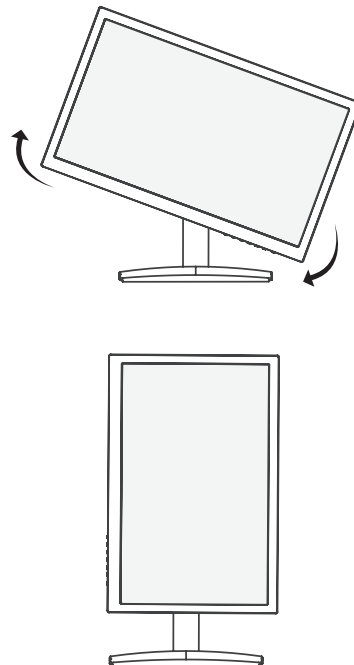
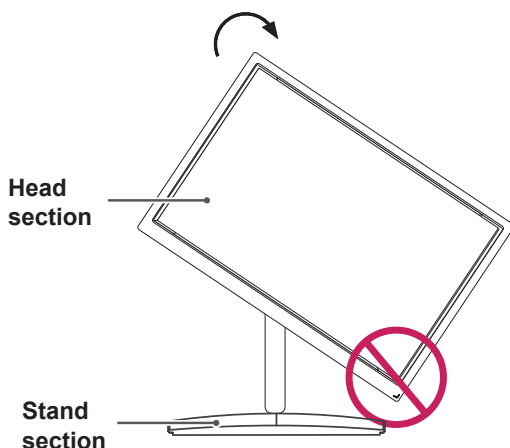
- Be careful with the cables when rotating the screen.



Using the Pivot function

The pivot function allows you to rotate the screen 90 degrees clockwise.

- Lift the monitor to its highest height to utilize the Pivot function.
- Landscape & Portrait : You can rotate the panel 90 degrees clockwise. Please be cautious and avoid contact between the monitor head and the Stand Base when rotating the screen to access the Pivot function. If the monitor head touches the Stand Base, then the Stand Base could crack.



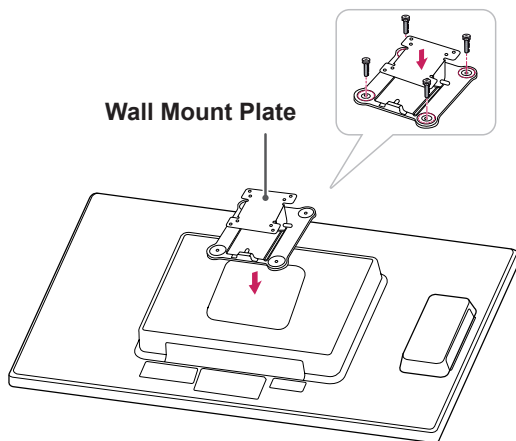
NOTE

- An image displayed on the monitor's screen does not rotate according to the screen orientation. To view a rotated image on the screen, connect the monitor to a PC and change the option in Display Settings. (See p.31)

Installing the wall mount plate

This monitor has a VESA compatible mount on the back. Most mounts will require an LG mounting plate.

- 1 Place the monitor's screen face down. To protect the screen from scratches, cover the surface with a soft cloth.
- 2 Place the wall mount plate on the monitor and align it with the screw holes on the monitor.
- 3 Using a screwdriver, tighten the four screws to fix the plate onto the monitor.

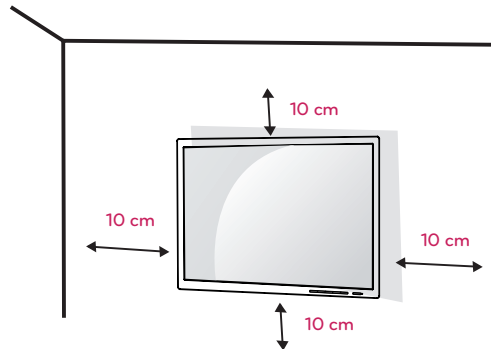


! NOTE

- The wall mount plate is sold separately.
- For more information on the installation, refer to the wall mount plate's installation guide.

Mounting on a wall

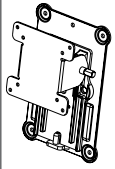
Install the monitor at least 10 cm away from the wall and leave about 10 cm of space at each side of the monitor to ensure sufficient ventilation. Detailed installation instructions can be obtained from your local retail store. Please refer to the manual to install and set up a tilting wall mounting bracket.



If you intend to mount the Monitor set to a wall, attach Wall mounting interface (optional parts) to the back of the set.

When you install the Monitor set using a wall mounting interface (optional parts), attach it carefully so it will not drop.

- 1 Please, Use the screw and wall mount interface in accordance with VESA Standards.
- 2 If you use screw longer than standard, the monitor might be damaged internally.
- 3 If you use improper screw, the product might be damaged and drop from mounted position. In this case, LG Electronics is not responsible for it.
- 4 VESA compatible.
- 5 Please use VESA standard as below.
 - 784.8 mm (30.9 inch) and under
 - * Wall Mount Pad Thickness : 2.6 mm
 - * Screw : Φ 4.0 mm x Pitch 0.7 mm x Length 10 mm
 - 787.4 mm (31.0 inch) and above
 - * Please use VESA standard wall mount pad and screws.

Model	23CAT42K
VESA (A x B)	100 x 100
Stand Screw	M4
Required Screw	4
Wall Mount Plate (Optional)	RW120 

**CAUTION**

- Unplug the power cord before moving or installing the monitor to avoid electric shocks.
- Installing the monitor on the ceiling or on a slanted wall may result in the monitor falling off, which could lead to injury. Please use a LG wall mounting bracket when using a VESA mount. For more information, contact your local retail store or a qualified installer.
- Applying excessive force when fastening screws may cause damage to the monitor. Damage caused in this way will not be covered by the product warranty.
- Use the wall mounting bracket and screws that conform to the VESA standard. Damage caused by the use or misuse of inappropriate components will not be covered by the product warranty.

**NOTE**

- Use the screws specified in the VESA standard.
- The wall mount kit includes the installation guide and necessary parts.
- The wall mounting bracket is optional. The accessories can be purchased at your local retail store.
- The length of the screw may differ for each wall mounting bracket. Ensure the correct length of the screw is used.
- For more information, please refer to the user manual for the wall mounting bracket.

USING THE MONITOR SET

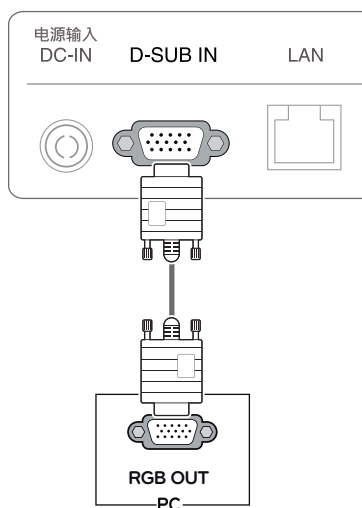
Connecting Input Signal Cable

- This monitor supports the *Plug and Play feature.
*Plug and Play: A feature that allows you to add a device to your computer, without having to reconfigure anything or install any manual drivers.

D-SUB IN connection - PC

D-SUB IN transfers analog video signals from the PC to the monitor.

Connect the monitor to the PC using the provided 15-pin D-SUB signal cable as illustrated below.

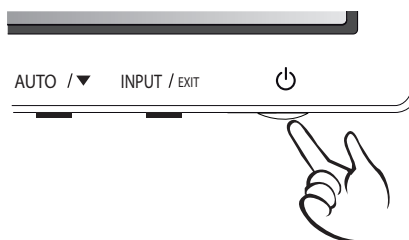


NOTE

- Apple Adapter**
An adapter may be needed for Apple computers. This adapter can be purchased from Apple.

Self Image Adjustment

Press the power button on the front to turn on the monitor. When powered on, the **"Self Image Adjustment"** function will run automatically (only available for analog [D-SUB input] signals).



NOTE

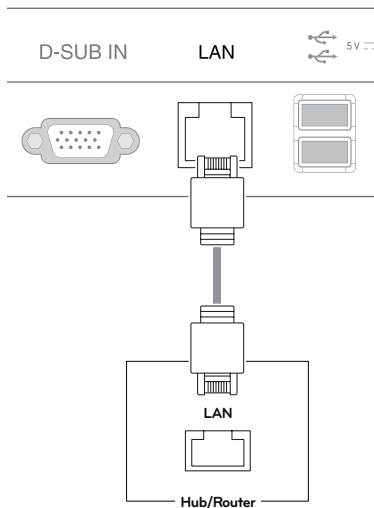
- What is "Self Image Adjustment"? This function runs when the monitor is connected for the first time and performs automatic image adjustment for each signal (only available for analog [D-SUB input] signals) to provide an optimal screen display.

USING THE CITRIX CLOUD MONITOR SET

Connecting LAN/Peripherals

LAN connection

Connect the router or switch to the monitor using a LAN cable as illustrated below.

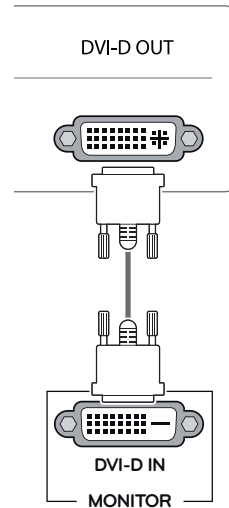


! NOTE

- The LAN cable is sold separately.
- The following LAN cable type can be used:
Standard: IEEE 802.3 ETHERNET
- Connect the LAN cable and the peripheral devices to use the CITRIX cloud monitor.

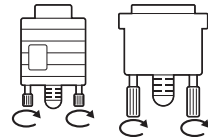
DVI connection

To use dual monitors, connect the cloud monitor to an extended monitor using a DVI cable as illustrated below.



CAUTION

- Connect the input signal cable and tighten in the direction of the arrow. To prevent disconnection secure the cable tightly.
- Do not press on the screen for a prolonged time. This may cause image distortion.
- Do not display a still image on the screen for a prolonged time. This may cause image retention. If possible, use the screen saver.



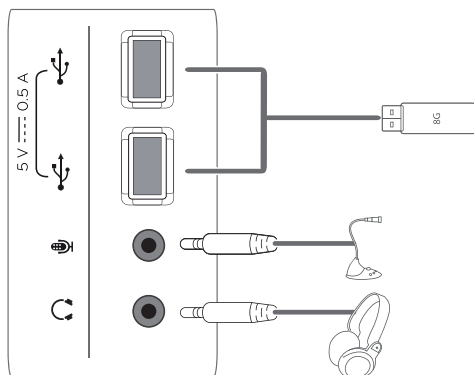
NOTE

- When connecting the power cord to the outlet, use a grounded (3-hole) multi-socket or a grounded wall outlet.
- The monitor may flicker when turned on in an area of low temperature. This is normal.
- Sometimes red, green or blue spots may appear on the screen. This is normal.

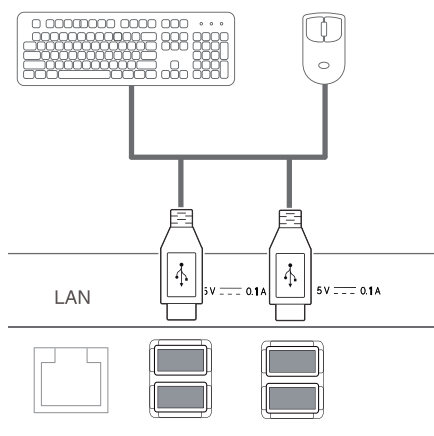
Peripheral device connection

Connect peripheral devices to the monitor using USB, microphone and headphone ports.

Left



Bottom

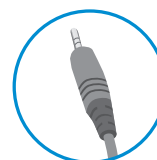


! NOTE

- Peripheral devices are sold separately.
- The USB ports on the left and bottom of the monitor can be used to connect the keyboard, mouse, and other USB devices.
- Cables with angled plugs may have clearance issues, use straight plugs when possible.



Angle Type



Straight Type

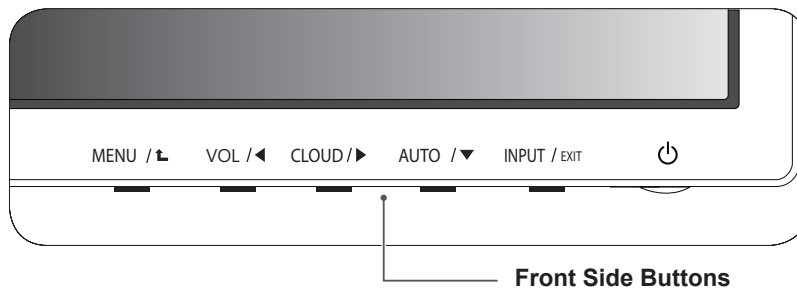
! NOTE

- The cloud server settings may affect the performance of the headphones, earphones or speakers depending on the connected cloud server.
- The cloud server settings may affect the functions or speed of the specific USB storage device depending on the connected cloud server.

CUSTOMIZING SETTINGS

Accessing The Main Menus

- 1 Press any button on the front of the monitor to display the MONITOR SETUP OSD menu.
- 2 Press to select the desired menu item.
- 3 To change the settings of the selected item press the buttons on the front of the monitor.
To return to the upper menu or set other menu items, use the up arrow (⬆) button.
- 4 Select EXIT to leave the OSD menu.



Button	Description	
MENU	Activates the main menu.	
	OSD Lock/Unlock Functions	Locks/unlocks the OSD screen. <ul style="list-style-type: none"> • To lock the OSD screen, press and hold the MENU button for several seconds. The "OSD LOCKED" message will be displayed and the screen will be locked. • To unlock the OSD screen, press and hold the MENU button again for several seconds. The "OSD UNLOCKED" message will be displayed and the screen will be unlocked.
VOL	Adjusts the volume of the DHL monitor.(only works in Cloud input mode); the left arrow key	
CLOUD	Disconnects the connection when the key is pressed for a few seconds while in Cloud mode; the right arrow key This button is used as a key for selecting the CLOUD input in the D-SUB input mode.	
AUTO	To adjust the monitor settings, press the AUTO button on the MONITOR SETUP OSD menu (only supported for analog signal). For optimal screen display, use the following resolution.	
	Optimal Resolution	1920 x 1080
INPUT	Allows selection of the input signal. <ul style="list-style-type: none"> • If you connect the monitor to a computer using a D-SUB cable, select either the CLOUD or D-SUB input signal. • The initial input signal is D-SUB. 	
EXIT	Exits the OSD menu.	
⏻ (Power Button)	<ul style="list-style-type: none"> • D-SUB Input: Power On/Off • CLOUD Input Monitor Off: Press the power button once then the monitor will be turned off after 5 seconds. CLOUD Off: Press the power button twice then the monitor and CLOUD connection will be disabled. CLOUD On: Press the power button.	
	Power Indicator	When the monitor is in operating mode, the power indicator will turn Red (on mode). When the monitor is in power saving mode, the power indicator will blink Red.

Customizing Settings

Menu Settings

- 1 Press **MENU** button on the bottom of the Monitor set to display the **MENU** OSD.
- 2 Set the options by pressing the ◀ or ▶ or ▼ buttons.
- 3 Select the "**NEXT MENU**" button to enter the more option settings.
- 4 Select **EXIT** to leave the OSD menu.
To return to the upper menu or set other menu items, use the up arrow (⬆) button.



Each option is explained below.

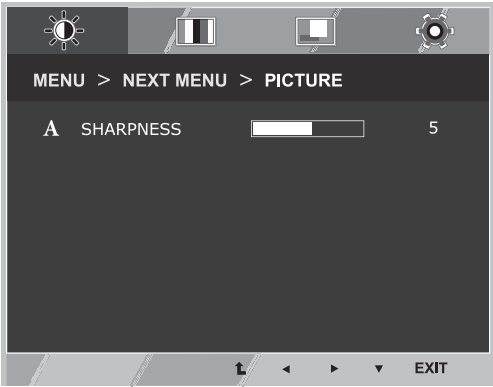
MENU	D-SUB	CLOUD	Description
BRIGHTNESS	•	•	To adjust the brightness of the screen
CONTRAST	•	•	To adjust the contrast of the screen
WIDE/ORIGINAL	•	•	WIDE
			Switch to full screen mode according to input image signal.
			ORIGINAL
			Change the input image signal ratio to original. * This function works only if input resolution is lower than Monitor set ratio (16:9).
RESET	•	•	Restore all factory default settings. Press the ◀ , ▶ buttons to reset immediately.

MENU > NEXT MENU		D-SUB	CLOUD	Description
PICTURE	SHARPNESS	•	•	Adjusts the sharpness of the screen
COLOR	GAMMA	•	•	To customize the color of the screen
	COLOR TEMP			
DISPLAY	HORIZONTAL	•		To adjust the position of the screen
	VERTICAL			
	CLOCK	•		To improve the clarity and stability of the screen
	PHASE			
OTHERS	LANGUAGE	•	•	To customize the screen status for a user's operating environment
	CLOUD			
	POWER INDICATOR			

- **CLOUD:** Using PC via a network.

PICTURE

- 1 Press **MENU** button on the bottom of the Monitor set to display the **MENU** OSD.
- 2 Select the "**NEXT MENU**" button to enter the more option settings.
- 3 Enter to **PICTURE** by pressing the ▼ button.
- 4 Set the options by pressing the ◀ or ▶ or ▼ buttons.
- 5 Select **EXIT** to leave the OSD menu.
To return to the upper menu or set other menu items, use the up arrow (⬆) button.



Each option is explained below.

MENU > NEXT MENU > PICTURE	Description
SHARPNESS	Adjusts the sharpness of the screen.

COLOR

- 1 Press **MENU** button on the bottom of the Monitor set to display the **MENU** OSD.
- 2 Select the "**NEXT MENU**" button to enter the more option settings.
- 3 Select **COLOR** by pressing the ► button.
- 4 Enter to **COLOR** by pressing the ▼ button.
- 5 Set the options by pressing the ◀ or ▶ or ▼ buttons.
- 6 Select **EXIT** to leave the OSD menu.
To return to the upper menu or set other menu items, use the up arrow (⬆) button.

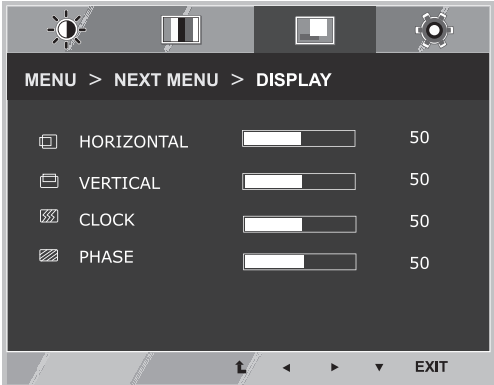


Each option is explained below.

MENU > NEXT MENU > COLOR	Description
GAMMA	Set your own gamma value. : GAMMA 0, GAMMA 1, GAMMA 2 on the monitor, high gamma values display whitish images and low gamma values display blackish images.
COLOR TEMP	CUSTOM
	<ul style="list-style-type: none">• RED:Set your own red color levels.• GREEN: Set your own green color levels.• BLUE:Set your own blue color levels.
	Select the screen color. WARM : Set the screen to warm color temperature (more red). MEDIUM : Set the screen to medium color temperature. COOL : Set the screen to cool color temperature (more blue).

DISPLAY

- 1 Press **MENU** button on the bottom of the Monitor set to display the **MENU** OSD.
- 2 Select the "**NEXT MENU**" button to enter the more option settings.
- 3 Select **DISPLAY** by pressing the ► button.
- 4 Enter to **DISPLAY** by pressing the ▼ button.
- 5 Set the options by pressing the ◀ or ▶ or ▼ buttons.
- 6 Select **EXIT** to leave the OSD menu.
To return to the upper menu or set other menu items, use the up arrow (⬆) button.



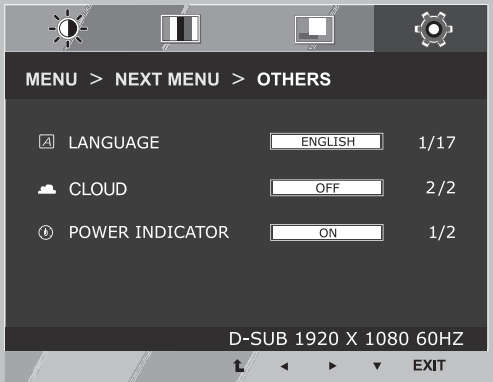
- Only available in D-SUB input mode.

Each option is explained below.

MENU > NEXT MENU > DISPLAY	Description
HORIZONTAL	To move image left and right.
VERTICAL	To move image up and down.
CLOCK	To minimize any vertical bars or stripes visible on the screen background. The horizontal screen size will also change.
PHASE	To adjust the focus of the display. This item allows you to remove any horizontal noise and clear or sharpen the image of characters.

OTHERS

- 1 Press **MENU** button on the bottom of the Monitor set to display the **MENU** OSD.
- 2 Select the "**NEXT MENU**" button to enter the more option settings.
- 3 Select **OTHERS** by pressing the ► button.
- 4 Enter to **OTHERS** by pressing the ▼ button.
- 5 Set the options by pressing the ◀ or ▶ or ▼ buttons.
- 6 Select **EXIT** to leave the OSD menu.
To return to the upper menu or set other menu items, use the up arrow (⬆) button.

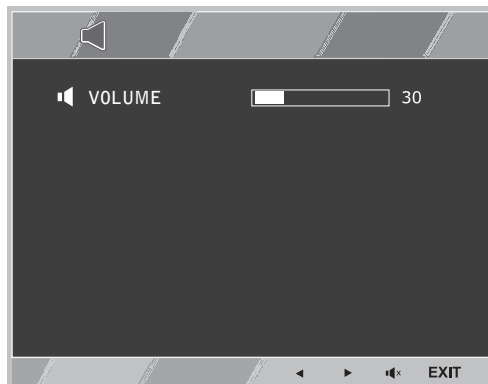


Each option is explained below.

MENU > NEXT MENU > OTHERS		Description
LANGUAGE		To choose the language in which the control names are displayed.
CLOUD	Off	CLOUD is disabled in D-SUB input mode.
	On	CLOUD is enabled in D-SUB input mode.
POWER INDICATOR		Use this function to set the power indicator on the bottom side of the monitor to ON or OFF.If you set OFF, it will go off. If you set ON at any time, the power indicator will automatically be turned on.

Volume (Only supported in CLOUD)

- 1 Press the **VOL** button at the bottom of the monitor to display the **VOL** OSD menu.
- 2 Press the ◀ or ▶ button to adjust the volume.
- 3 Press the 🔊 button to enable or disable Mute.
- 4 Select **EXIT** to leave the OSD menu.



Each option is explained below.

MENU > NEXT MENU > VOLUME	Description
VOLUME	Adjusts the volume (only available in CLOUD input mode).

TROUBLESHOOTING

Nothing is displayed on the screen	
Is the monitor's power cord plugged in?	<ul style="list-style-type: none"> • Check if the power cord is correctly plugged in to the outlet.
Is the power indicator on?	<ul style="list-style-type: none"> • Check the power indicator.
Is the power indicator displaying as white?	<ul style="list-style-type: none"> • Adjust the brightness and the contrast.
Is the power indicator blinking?	<ul style="list-style-type: none"> • If the monitor is in power saving mode, move the mouse or press any key on the keyboard to switch the display on. • Check if the computer is turned on.
Is the "OUT OF RANGE" message displayed?	<ul style="list-style-type: none"> • This occurs when signals transferred from the PC (video card) are out of the horizontal or vertical frequency range of the monitor. Please see the "Product Specification" section of this manual to set the appropriate frequency.
Is the "CHECK SIGNAL CABLE" message is displayed?	<ul style="list-style-type: none"> • This is displayed when the signal cable between the PC and the monitor is missing or disconnected. Check the cable and reconnect.

The "OSD LOCKED" message is displayed.	
Is the "OSD LOCKED" message displayed when the MENU button is pressed?	<ul style="list-style-type: none"> • The OSD lock feature is enabled to prevent undesired modification of the OSD settings. Press and hold the MENU button for a couple of seconds to unlock the OSD. (The "OSD UNLOCKED" message will be displayed.)

The screen retains an image.	
Does image sticking occur even when the monitor is turned off?	<ul style="list-style-type: none"> • Displaying a still image for a prolonged time may cause damage to the screen, resulting in the retention of the image. • Use a screen saver to protect the screen when using the monitor for a prolonged period of time.



NOTE

- **Vertical Frequency:** In order to display an image, the screen must be refreshed dozens of times per second like a fluorescent lamp. The number of times the screen is refreshed per second is called vertical frequency or refresh rate and is represented by Hz.
- **Horizontal Frequency:** The time it takes to display one horizontal line is called the horizontal cycle. The number of horizontal lines displayed in one second can be calculated by dividing one by the horizontal cycle. This is called horizontal frequency and is represented by kHz.

The image is displayed abnormally.	
Does the display area appear un-centered?	Pressing the AUTO button will automatically optimize the screen to the current display mode.
Does the screen exhibit vertical lines?	Pressing the AUTO button will automatically optimize the screen to the current display mode.
Does the screen display horizontal frequencies, or does the text appear blurred?	Pressing the AUTO button will automatically optimize the screen to the current display mode.



NOTE

- Check if the video card's resolution or frequency is within the range allowed by the monitor and set to the recommended (optimal) resolution in **Control Panel > Display > Settings**.
- Failing to set the video card to the recommended (optimal) resolution may result in blurred text, a dimmed screen, a truncated display area or misalignment of the display.
- The configuration procedure may differ depending on your computer and/or operating system. Also, some video cards may not support certain resolutions. If this is the case, contact the computer or video card manufacturer for assistance.
- The AUTO option is only available for D-SUB (analog) signals.

The display color is abnormal.	
Does the display color appear dis-colored (16 color)?	<ul style="list-style-type: none"> • Set the color to 24 bit (true color) or higher. In Windows, go to Control Panel > Display > Settings > Color Quality.
Does the display color appear unstable or in monochrome?	<ul style="list-style-type: none"> • Check if the signal cable is connected properly. Re-connect the cable or re-insert the PC's video card.
Are there spots on the screen?	<ul style="list-style-type: none"> • When using the monitor, pixilated spots (red, green, blue, white or black) may appear on the screen. This is normal for the LCD screen. It is not an error nor is it related to the monitor's performance.

PRODUCT SPECIFICATION

LCD Screen	Type	58.42 cm (23 inch) TFT (Thin Film Transistor) LCD (Liquid Crystal Display) Screen Diagonal length of the screen: 58.42 cm
	Pixel Pitch	0.2652 mm x 0.2652 mm
Resolution	Maximum Resolution	1920 x 1080 @ 60 Hz
	Recommended Resolution	1920 x 1080 @ 60 Hz
	DVI-D output	1920 x 1200 @ 60 Hz
Video Signal	Horizontal Frequency	30 kHz to 68 kHz
	Vertical Frequency	57 Hz to 63 Hz
	Synchronization	Separate Sync
Input Connector	15-pin D-SUB (Analog)	
Power	Power	19 V --- 2.3 A
	Power Consumption(Typ.) (D-sub/CLOUD)	On Mode: 24 W(D-sub) / 31 W(CLOUD) Power Saving Mode ≤ 0.5 W (CLOUD mode: 8.5 W) Off Mode ≤ 0.5 W
Dimension/ Weight	Monitor Size (Width x Height x Depth)	
	With Stand	544.2 mm x 386.5 mm x 130.6 mm
	Without Stand	544.2 mm x 332.3 mm x 47 mm
Weight (Without Packaging)	5.54 kg	
AC/DC Adapter	Type PA-1650-68, manufactured by LITE-ON TECHNOLOGY CORPORATION. OUTPUT: 19 V --- 3.42 A	
Stand Angle Adjustment	Forwards/Backwards: -5° to 15° (Monitor)	
Environment Condition	Operating Condition	Temperature: 10°C to 35°C; Humidity: 10% to 80%
	Storing Condition	Temperature: -20°C to 60°C; Humidity: 5% to 90%

The specifications are subject to change without notice.

Preset Mode

Display Modes (Resolution)	Horizontal Frequency (kHz)	Vertical Frequency (Hz)	Polarity (H/V)	Remark
720 x 400	31.468	70.08	-/+	
640 x 480	31.469	59.94	-/-	
800 x 600	37.879	60.317	+/+	
1024 x 768	48.363	60	-/-	
1280 x 1024	63.981	60.02	+/+	
1680 x 1050	65.290	59.954	-/+	
1920 x 1080	67.5	60	+/+	Recommended Mode

Power Indicator

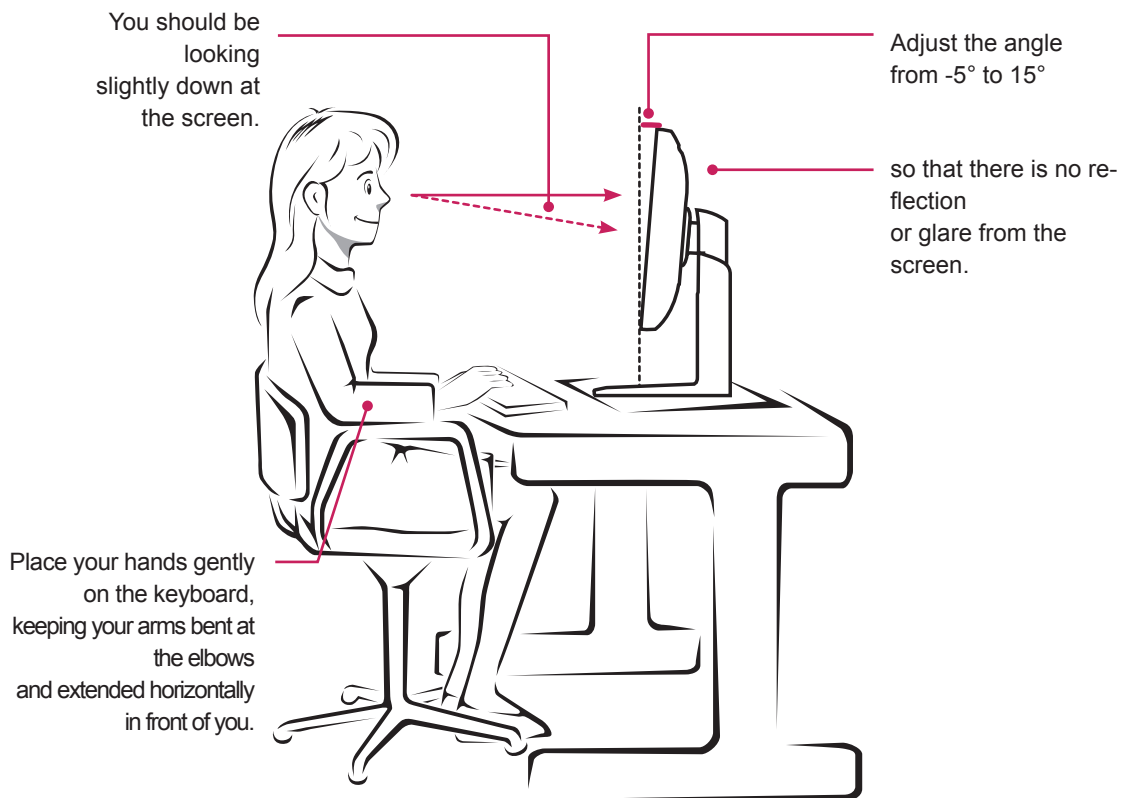
Mode	LED Color
On Mode	Red
Power Saving	Blinking Red
Off Mode	Off

PROPER POSTURE

Proper posture for using the monitor

Adjust the angle so that the screen is slightly lower than your eyes.

- Using the monitor for a prolonged period of time can cause eye fatigue. Take a 10-minute break every hour.
- The stand is designed to best support the monitor when the optimal conditions are selected. Adjust the angle of the monitor from -5° to 15° to obtain the best view of the screen.



USING CITRIX CLOUD MONITOR

Login screen

This screen is displayed when power is turned on.

Login Window

Enter a user name, password and domain to access the VDI server.

- **Network status:** If a network is connected, the text **Connected** appears with a green circle button. If not, the text **Disconnected** appears with a red circle button. When you click the **Network status** link, the network setting screen is displayed. If a network is being connected, the message 'Connecting...' is displayed with [Figure: Red].
- **Remember me:** If you select this button, the system saves your user name and domain that you used to log in for future use.
- **Log in:** When you click this button, the system starts to access a server.

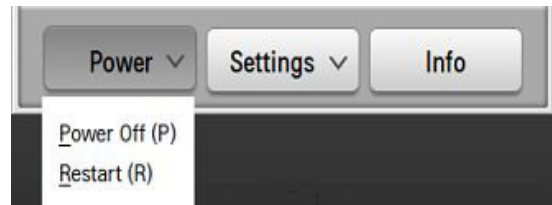


NOTE

- The maximum number of characters allowed for a user name, password and domain is 80.

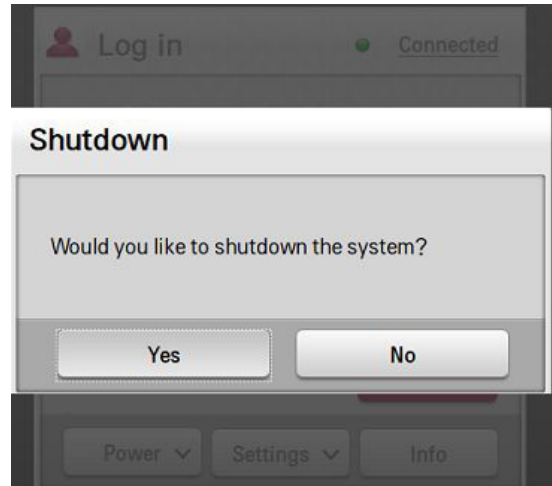
Power Button

Click the Power button to turn the system off or restart it in the login screen.



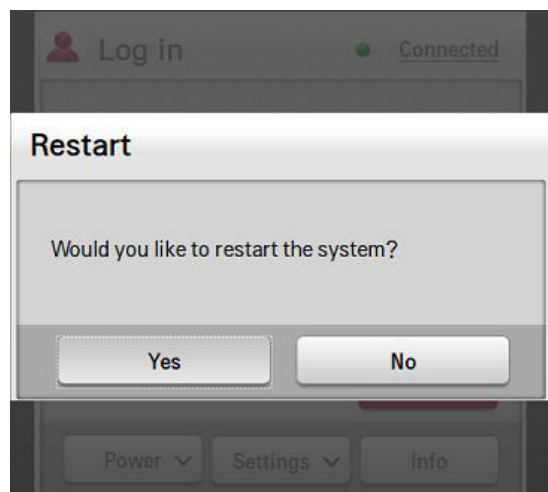
Power Off Menu

Select the Power Off menu and then press the OK button in the Shutdown pop-up to terminate the system.

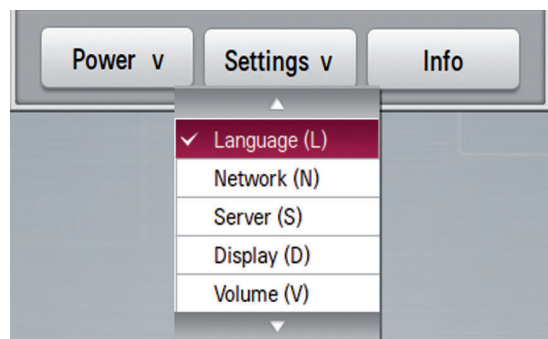


Restart Menu

Select the Restart menu and click the OK button in the Restart pop-up to restart the system.

**Settings button:**

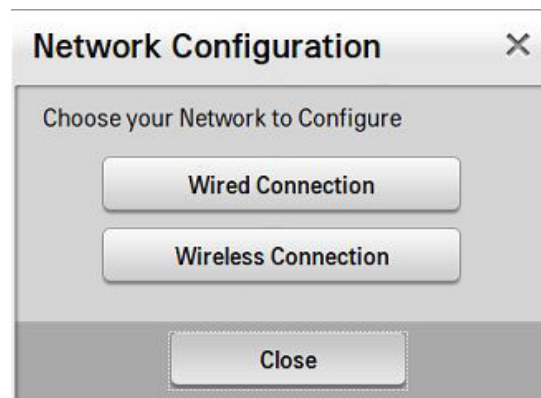
You can set the network, server or language for using a network monitor.

**Language**

Set a language to use on the network monitor home screen. After setting the language, click the 'OK' button. The default is English.

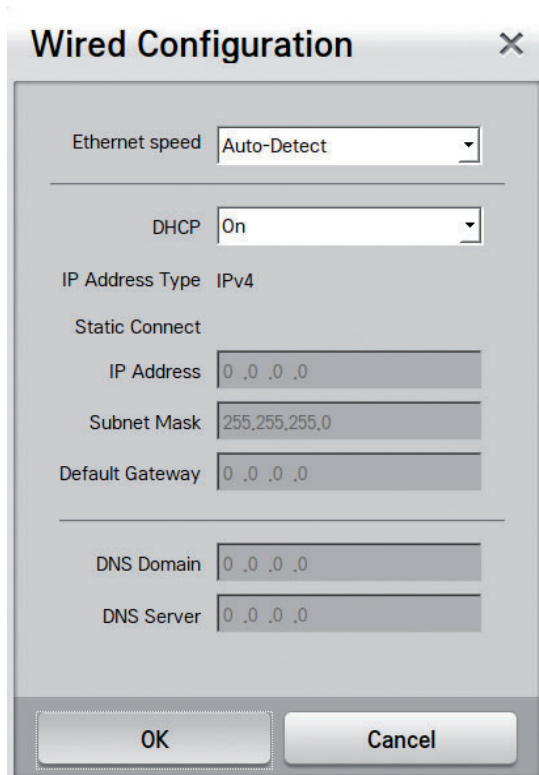
**Network**

Set a wired/wireless network.
(Support for the wireless connection is planned to begin in 2013.)



Wired connection setting

- Ethernet speed setting: Set the network speed.
You can select Auto-Detect, 10Mbps, 100Mbps or 1000Mbps.
- DHCP setting: Set the DHCP mode. If it is set to On, an IP is automatically fetched from a DHCP server and used.
- Static connection setting: If DHCP is set to Off, the input window is displayed for detailed setting. Enter the IP Address, Subnet Mask, Default Gateway and DNS Server fields and then click the OK button.



Wired Configuration

Ethernet speed: Auto-Detect

DHCP: On

IP Address Type: IPv4

Static Connect

IP Address: 0 .0 .0 .0

Subnet Mask: 255,255,255,0

Default Gateway: 0 .0 .0 .0

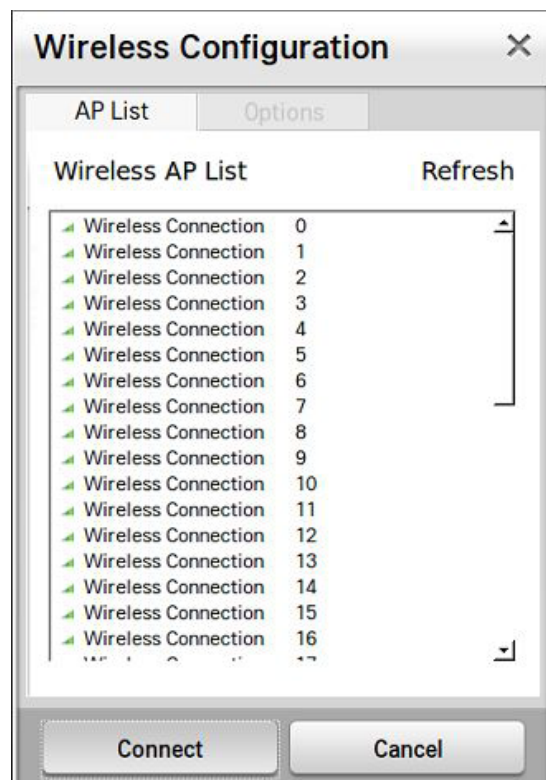
DNS Domain: 0 .0 .0 .0

DNS Server: 0 .0 .0 .0

OK Cancel

Wireless setting (support planned to begin in 2013)

- The AP list for wireless network connection is displayed. Click the Refresh button to update the list of accessible APs.
- Double click an AP or click the Connect button after selecting an AP to access the AP. When the connection is established, the AP is marked as connected in the list.
- When you select a connected AP and then click the right mouse button, the Disconnect and Set-Up buttons are displayed. If you select an AP which is not connected and then click the right mouse button, the Connect button is displayed.



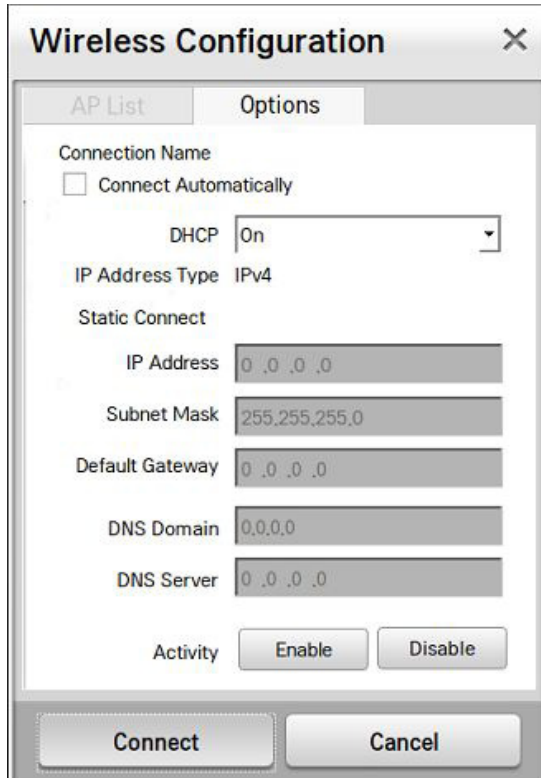
Wireless Configuration

AP List Options

Wireless AP List Refresh

Wireless Connection	0
Wireless Connection	1
Wireless Connection	2
Wireless Connection	3
Wireless Connection	4
Wireless Connection	5
Wireless Connection	6
Wireless Connection	7
Wireless Connection	8
Wireless Connection	9
Wireless Connection	10
Wireless Connection	11
Wireless Connection	12
Wireless Connection	13
Wireless Connection	14
Wireless Connection	15
Wireless Connection	16

Connect Cancel



Wireless Configuration

AP List Options

Connection Name
☐ Connect Automatically

DHCP On

IP Address Type IPv4

Static Connect

IP Address 0 .0 .0 .0

Subnet Mask 255.255.255.0

Default Gateway 0 .0 .0 .0

DNS Domain 0,0,0,0

DNS Server 0 .0 .0 .0

Activity

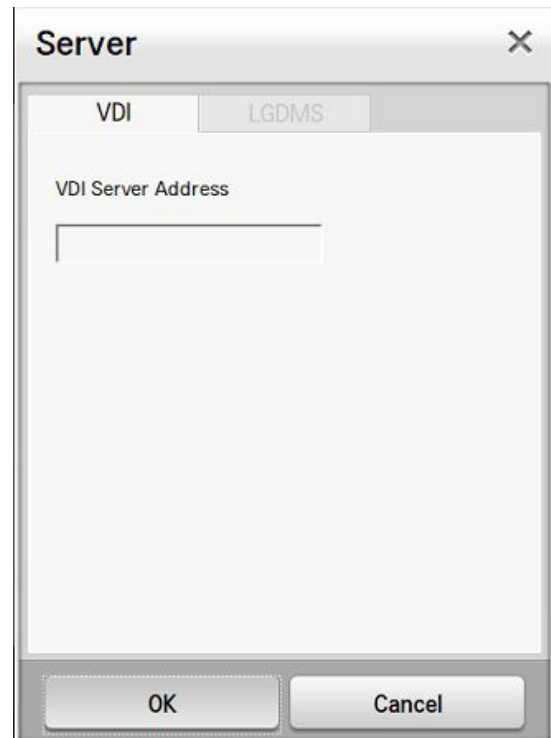
- **Connect Automatically:** This option connects an IP automatically if it is disconnected.
- **DHCP setting:** Set the DHCP mode. If it is set to On, an IP is automatically fetched from a DHCP server and used.
- **Static connection setting:** If DHCP is set to Off, the input window is displayed for detailed setting. Enter the IP Address, Subnet Mask, Default Gateway and DNS Server fields and then click the OK button.
- **Activity setting:** Set to turn on/off a wireless network.
 Enable: Wireless network is used.
 Disable: Wireless network is not used.

Server

Set Citrix VDI server and LGDMS server address. LGDMS is a cloud monitor management software provided by LG Electronics.

VDI server setting

- Enter a VDI server address to access.



Server

VDI LGDMS

VDI Server Address

LGDMs setting

- Enter the address of LGDMS server to connect to.

Server

VDI LGDMS

LGDMS IP Address

192.168.1 .0

OK Cancel

Screen Output Setting**Primary display setting**

- Resolution: Select the resolution of a monitor. The network monitor supports 5 resolutions including Auto, 1920x1080, 1680x1050, 1280,x1024 and 1024x769. When it is set to Auto, the monitor is automatically adjusted to the optimal resolution.
- Rotation: Set the angle of a LCD screen to normal, 90 degree counter-clockwise or 90 degree clockwise.

Display

Primary Secondary

Resolution Auto

Rotation None

OK Cancel

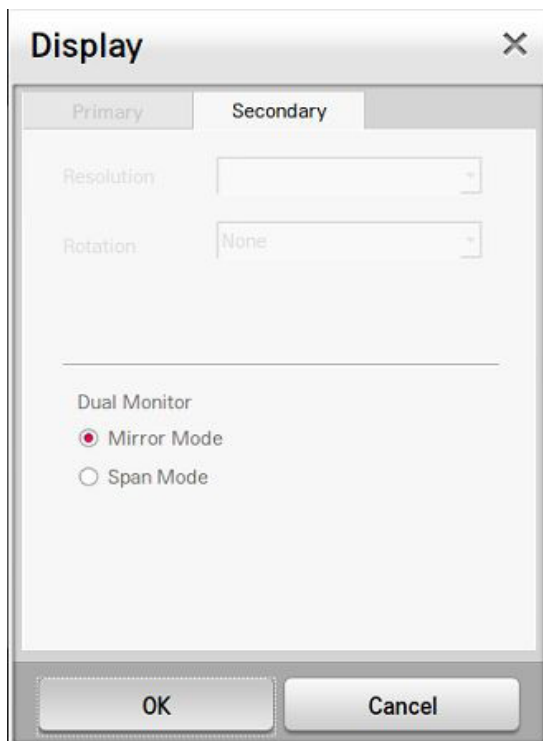
Secondary display setting

- **Resolution:** Select the resolution of a monitor.
Among the resolutions supported in the DVI monitor, 1024x768 or higher resolutions and Auto menu are displayed.
When it is set to Auto, the monitor is automatically adjusted to the optimal resolution.
- **Rotation:** Set the angle of a LCD screen to normal, 90 degree counter-clockwise or 90 degree clockwise.
- **Dual Monitor:** You can specify the extension mode.
 - Span Mode allows to extend display.
 - Mirror Mode allows to copy display.
 In Mirror Mode, the resolution and rotation menus are disabled.
When you click the OK button, the system is restarted and the selected settings are applied.



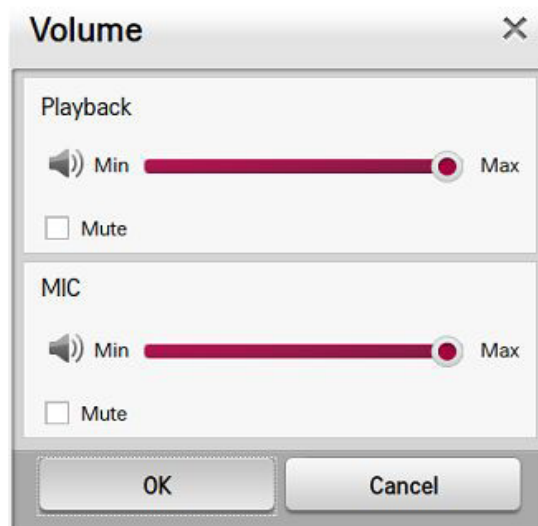
NOTE

- The settings are enabled only when the DVI-D monitor is connected.



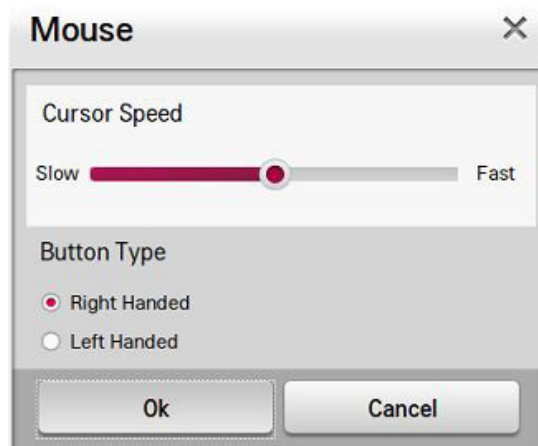
Volume

You can adjust the system volume and mike volume. If you select the Mute checkbox, the volume control bar is disabled.



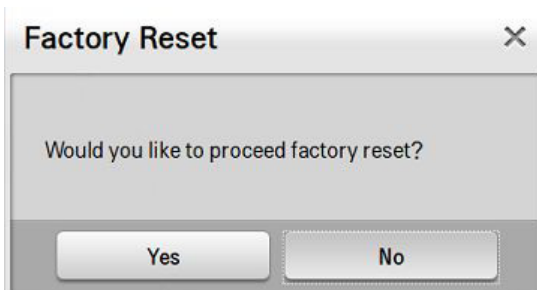
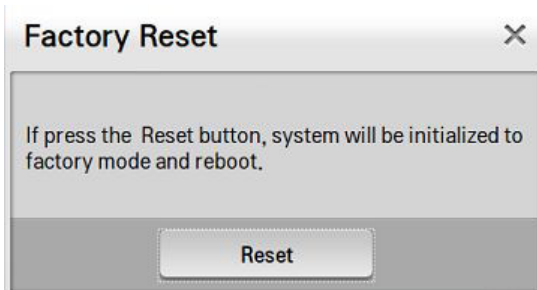
Mouse

You can set the mouse speed by dragging the "Cursor Speed" scroll bar. Select either "Right Handed" or "Left Handed" in Button Type to customize the mouse buttons.



Factory reset

The system is reset to factory defaults and rebooted. All user settings are removed.

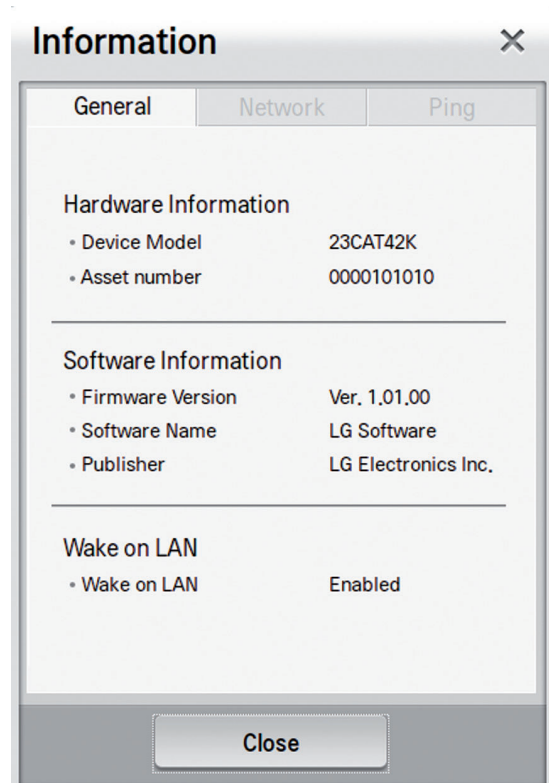
**Information button****General Tab**

Display the hardware and software information of a network monitor.

- Hardware Information: Network monitor model name and asset number.
The asset number can be set in LGMC
- Software information: Firmware version, software file name and publisher information
- Wake on LAN: Status of Wake on LAN

**NOTE**

- Wake on LAN can only be set in the LGMC.
- LGMC is a cloud management software application provided by LG Electronics.



Network Tab

Display network related information.

- Network Information: VDI/LGDMS server IP address information
- Wired Connection: IP address and MAC address of a wired network
- Wireless Connection: IP address and MAC address of a wireless network

Information [X]

General Network Ping

Network Information

- VDI IP Address
- LGDMS IP Address 0.0.0.0

Wired Connection

- IP Address 192.168.1.95
- Mac Address 08-00-28-31-f6-26

Wireless Connection

- IP Address
- Mac Address

Close

Ping Tab

By pinging, you check the network connection to a specific IP or host from a local client and also local network status.

**NOTE**

- Only IP or host name can be entered. The parameters of ping can not be used.

Information [X]

General Network Ping

Enter Hostname or IP

[Empty area for ping results]

Start Clear log

Close



Declaration of Conformity

Trade Name: LG
Model : 23CAT42KL
Responsible Party: LG Electronics Inc.
Address : 1000 Sylvan Ave. Englewood Cliffs
NJ 07632 U.S.A
TEL: 201-266-2534

*above information is only for USA FCC Regulatory

Make sure to read the Safety Precautions before using the product.
Keep the Owner's Manual(CD) in an accessible place for future reference.
The model and serial number of the SET is located on the back and one side of the SET. Record it below should you ever need service.

MODEL _____

SERIAL _____

To obtain the source code under GPL, LGPL, MPL and other open source licenses, that is contained in this product, please visit <http://opensource.lge.com> .

In addition to the source code, all referred license terms, warranty disclaimers and copyright notices are available for download. LG Electronics will also provide open source code to you on CD-ROM for a charge covering the cost of performing such distribution (such as the cost of media, shipping and handling) upon email request to opensource@lge.com. This offer is valid for three (3) years from the date on which you purchased the product.

ENERGY STAR is a set of power-saving guidelines issued by the U.S.Environmental Protection Agency(EPA).



As an ENERGY STAR Partner LGE U. S. A.,Inc. has determined that this product meets the ENERGY STAR guidelines for energy efficiency.