



LG

Life's Good

User Manual

CALIBRATOR

Please read the user manual carefully before using the product.
The LG monitor has been designed to achieve the best calibration results through use of the LG Calibrator.

Calibrator Model List

ACB8300

TABLE OF CONTENTS

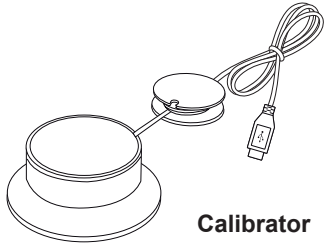
3 PRODUCT COMPOSITION

4 MONITOR CALIBRATOR

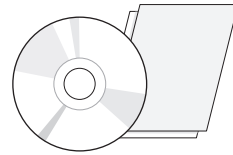
- 4 LG Calibration Software
- 5 System Requirements
- 6 Connecting the Calibrator to a Monitor

PRODUCT COMPOSITION

Please check whether all the accessories are present in the box before using the product.
If any accessories are missing, contact the retail store where you purchased the product.
Note that the product and accessories may look different from the figures in this manual.



Calibrator



User Manual/Card

MONITOR CALIBRATOR

This calibrator is a tool to measure and calibrate the color gamut, brightness, color temperature and gamma of the monitor.

LG calibration software is required to use the calibrator.

LG calibration software is included on the monitor user's manual CD.

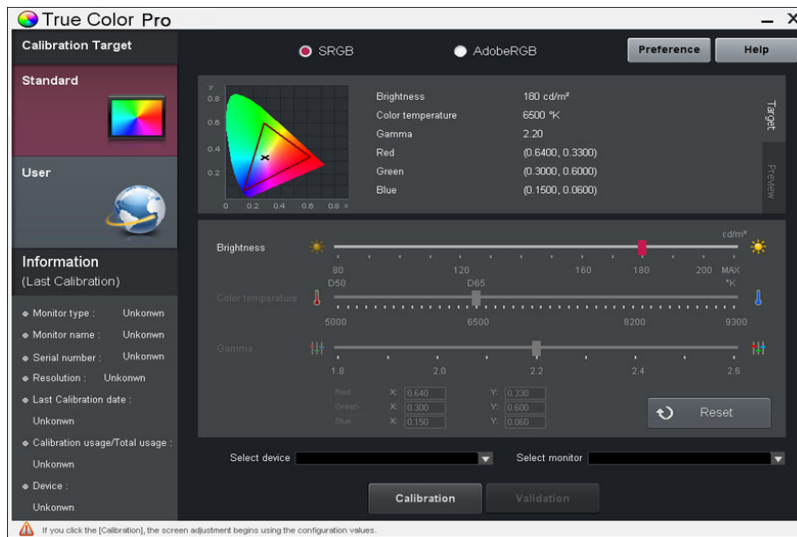
LG Calibration Software

LG calibration software is a software application designed to calibrate an LG monitor.

Most monitors have color reproduction issues that cause them to display colors that differ from the intended ones. There are many reasons for this. LG calibration software helps you calibrate the color difference on your monitor by providing calibration options to customize the monitor to suit your needs.

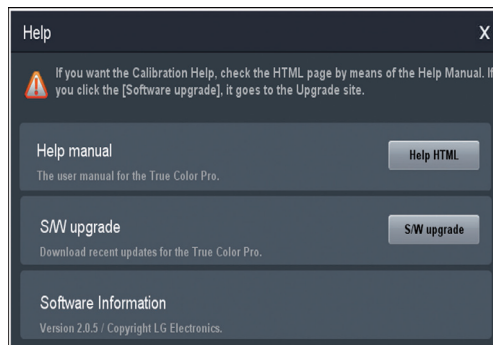
True Color Pro is one of the LG calibration software applications.

Click the Help button in the upper right corner for information about how to use the software.



<Example of True Color Pro Window>

When the Help window appears as shown below, click the User Guide button to see the details.



System Requirements

Hardware

- Intel/AMD processors
- 512 MB RAM
- HDD: 100 MB
- Recent video card (for details, see list of supported graphic cards below)
- LG Monitor
 - Additional LG monitor models that support this product will become available.
 - Some LG monitor models that support the LG calibration software may not work with LG calibration.
 - Third-party monitors may not work with this product.

Supported OS

- Windows:
 - XP (32-bit, Service Pack 3 or later)
 - Window7(32-bit & 64-bit, Service Pack 1 or later)

Graphics Card

- NVIDIA
- ATI
- Intel (Windows 7 (32-bit & 64-bit) supported. It is recommended that you configure the monitor to be calibrated as the default monitor.)

Supported Software

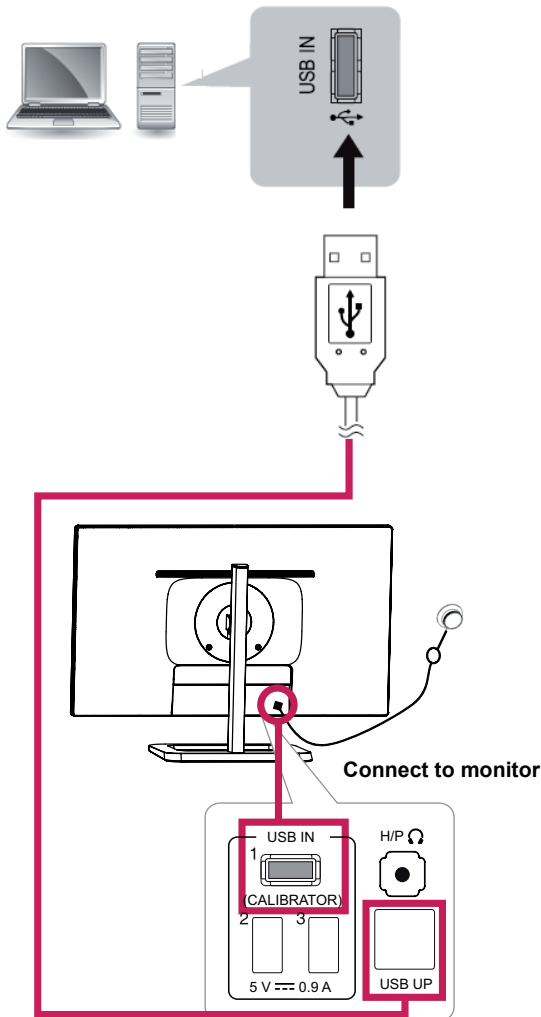
- LG Calibration software
 - True Color Finder
 - True Color Pro
- This application is not compatible with third-party calibration software.

Connecting the Calibrator to a Monitor

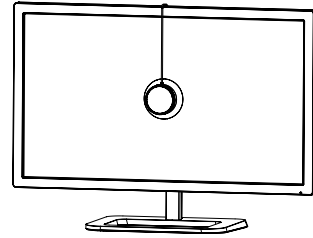
- 1 Insert the calibrator USB cable into a USB input or the calibrator input on the back side of your monitor. Make sure that your PC and monitor are connected as below.

Connecting the Monitor to a PC

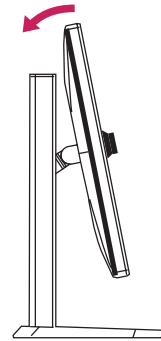
- Before calibrating your monitor with the calibrator, connect a USB cable between the USB UPSTREAM port of the monitor and a USB port on the PC.



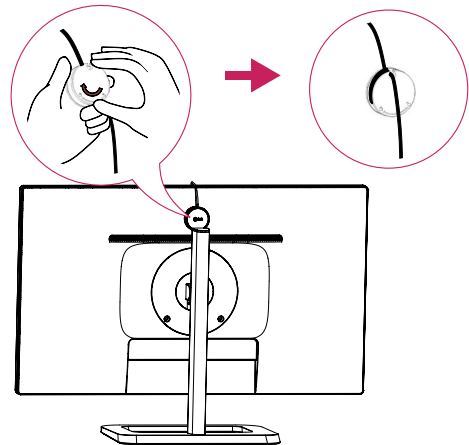
- 2 Place the calibrator in the middle of the monitor screen.



- 3 Tilt the monitor back to affix the calibrator.



- 4 Turn the pendulum of the calibrator to the right until the cable is affixed. Wind extra cable into the groove around the pendulum 5 to 7 times to tidy up, if necessary.



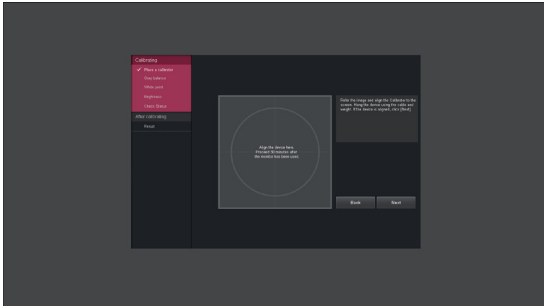
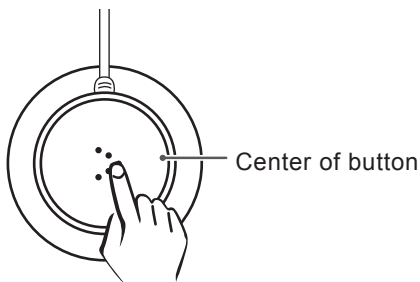
⚠ CAUTION

- Do not twirl the calibrator or its pendulum. This may cause a wire to break and/or result in personal injury.
- Remove the calibrator from the monitor before adjusting the position of the screen.

- 5 When you run the LG calibration software, the LG calibration icon [🌈] appears in the system tray in the lower right corner of the desktop.



Right click the LG calibration icon and press Starting Program, or press the calibrator button (the center of the button) to run the software.



 **CAUTION**

- Once you have completed the monitor calibration with the LG calibration software, remove the calibrator from the monitor and store it in a box at room temperature away from direct sunlight.
 - If the calibrator's measuring element is exposed to direct sunlight for a long time, this may degrade the calibrator's performance.
- Do not use in an environment with too low/high temperature and high humidity.
- The calibrator may not work properly if any third-party calibration application is installed on your PC, so you are advised to remove it.



This device meets the EMC requirements for home appliances (Class B) and is intended for home usage. This device can be used in all regions.

Read the owner's manual (CD) carefully and keep it at hand.

The product label contains necessary information for after-service.

MODELS _____

Serial No. _____

LG Twin Towers, 20, Yoido-dong, Youngdungpo-gu, Seoul, Korea

Company Name: LG Electronics
Equipment Name (Model Name): Calibrator (ACB8300)

Manufacturer: LG Electronics/Korea

Date manufactured: See the product label

Use with UL Listed IT Equipment