



# LG Pocket Photo

## Owner's manual

Please read this manual carefully before operating your device.

MODEL : PD233/PD233P



NFC-enabled



Fun Application



Inkless Paper



Android™



Bluetooth®

Bluetooth®



QR Code for PocketPhoto App

ENGLISH

## Safety information



**CAUTION:** TO REDUCE THE RISK OF ELECTRIC SHOCK DO NOT REMOVE COVER (OR BACK) NO USER-SERVICEABLE PARTS INSIDE REFER SERVICING TO QUALIFIED SERVICE PERSONNEL.



This lightning flash with arrowhead symbol within an equilateral triangle is intended to alert the user to the presence of uninsulated dangerous voltage within the product's enclosure that may be of sufficient magnitude to constitute a risk of electric shock to persons.



The exclamation point within an equilateral triangle is intended to alert the user to the presence of important operating and maintenance (servicing) instructions in the literature accompanying the product.

**WARNING:** TO PREVENT FIRE OR ELECTRIC SHOCK HAZARD, DO NOT EXPOSE THIS PRODUCT TO RAIN OR MOISTURE.

**WARNING:** Do not install this equipment in a confined space such as a book case or similar unit.

**CAUTION:** Do not block any ventilation openings. Install in accordance with the manufacturer's instructions.

Slots and openings in the cabinet are provided for ventilation and to ensure reliable operation of the product and to protect it from over heating. The openings shall never be blocked by placing the product on a bed, sofa, rug or other similar surface. This product shall not be placed in a built-in installation such as a bookcase or rack unless proper ventilation is provided or the manufacturer's instruction has been adhered to.

### **CAUTION concerning the Power Cord**

Most appliances recommend they be placed upon a dedicated circuit;

That is, a single outlet circuit which powers only that appliance and has no additional outlets or branch circuits. Check the specification page of this owner's manual to be certain. Do not overload wall outlets. Overloaded wall outlets, loose or damaged wall outlets, extension cords, frayed power cords, or damaged or cracked wire insulation are dangerous. Any of these conditions could result in electric shock or fire. Periodically examine the cord of your appliance, and if its appearance indicates damage or deterioration, unplug it, discontinue use of the appliance, and have the cord replaced with an exact replacement part by an authorized service center. Protect the power cord from physical or mechanical abuse, such as being twisted, kinked, pinched, closed in a door, or walked upon. Pay particular attention to plugs, wall outlets, and the point where the cord exits the appliance. To disconnect power from the mains, pull out the mains cord plug. When installing the product, ensure that the plug is easily accessible.

This device is equipped with a portable battery or accumulator.

**Safety way to remove the battery or the battery from the equipment:** Remove the old battery or battery pack, follow the steps in reverse order than the assembly. To prevent contamination of the environment and bring on possible threat to human and animal health, the old battery or the battery put it in the appropriate container at designated collection points. Do not dispose of batteries or battery together with other waste. It is recommended that you use local, free reimbursement systems batteries and accumulators. The battery shall not be exposed to excessive heat such as sunshine, fire or the like.

**NOTICE:** For safety making information including product identification and supply ratings, please refer to the main label inside the apparatus.

**NOTICE:** Only use the AC adaptor supplied with this device. Do not use a power supply from another device or another manufacturer. Using any other power cable or power supply may cause damage to the device and void your warranty.

#### CAUTION:

- The apparatus should not be exposed to water (dripping or splashing) and no objects filled with liquids, such as vases, should be placed on the apparatus.
- Minimum distance around the apparatus for sufficient ventilation, no less than 5 cm.
- The ventilation should not be impeded by covering the ventilation openings with items, such as newspapers, table-cloth, curtains etc.
- No naked flame sources, such as lighted candles, should be placed on the apparatus.
- Internal lithium battery in the unit should not be replaced by user because of danger of explosion if battery is incorrectly replaced, and must be replaced with the same type battery by expert.

#### Disposal of your old appliance



1. When this crossed-out wheeled bin symbol is attached to a product it means the product is covered by the European Directive 2002/96/EC.
2. All electrical and electronic products shall be disposed of separately from the municipal waste stream via designated collection facilities appointed by the government or the local authorities.
3. The correct disposal of your old appliance will help prevent potential negative consequences for the environment and human health.
4. For more detailed information about disposal of your old appliance, please contact your city office, waste disposal service or the shop where you purchased the product.

### Disposal of waste batteries/accumulators



1. When this crossed-out wheeled bin symbol is attached to batteries/accumulators of your product it means they are covered by European Directive 2006/66/EC.
2. This symbol may be combined with chemical symbols for mercury(Hg), cadmium(Cd) or lead(Pb) if the battery contains more than 0.0005% of mercury, 0.002% of cadmium or 0.004% of lead.
3. All batteries/accumulators should be disposed separately from the municipal waste stream via designated collection facilities appointed by the government or the local authorities.
4. The correct disposal of your old batteries/accumulators will help to prevent potential negative consequences for the environment, animal and human health.
5. For more detailed information about disposal of your old batteries/accumulators, please contact your city office, waste disposal service or the shop where you purchased the product.

# CE 1588

LG Electronics hereby declares that this/these product(s) is/are in compliance with the essential requirements and other relevant provisions of Directive 1999/5/EC, 2004/108/EC, 2006/95/EC, 2009/125/EC and 2011/65/EU.

**Contact office for compliance of this product:**

LG Electronics Inc  
EU Representative, Krijgsman 1,  
1186 DM Amstelveen, The Netherlands

- Please note that this is NOT a Customer Service contact point. For Customer Service Information, see Warranty Card or contact the dealer that you purchased this product.

Indoor use only.

**RF Radiation Exposure Statement**

This equipment should be installed and operated with minimum distance 20 cm between the radiator and your body.



**Note**

**Device operating temperature**

When operating in cold weather, the device shall not print. Bring it inside from the cold and give about 10 min to adjust to the specified operating temperature (5 °C - 40 °C). Then try printing again. (For the appropriate use, it is recommended not to operate it outdoors in winter.)



**Caution**

**CAUTION when using this product in environments of low humidity**

- It may cause static electricity in environments of low humidity.
- It is recommended to use this product after touching any metal object which conducts electricity.

## Contents

### Safety information .....2

### STEP 1 Getting Started .....8

Supplied items.....8

Product Overview.....8

Power On / Off.....9

### STEP 2 Charging Battery .....9

### STEP 3 Inserting Photo Paper ..... 11

Cleaning printer head using Smart Sheet 11

Paper Jam Solution .....12

### STEP 4 Installing App ..... 12

Installing App for Android phone .....12

App Setting.....13

Installing App for iPhone .....14

Setting Bluetooth of iPhone .....14

### STEP 5 Printing Photo ..... 15

Printing using Android phone.....15

Printing using iPhone .....18

### Notes on the printing..... 20

### Checking Label..... 21

### About LED Indicator ..... 22

### Specifications ..... 23

### Troubleshooting ..... 24

# STEP 1 Getting Started

## Supplied items



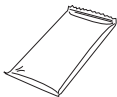
LG Pocket Photo Printer



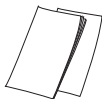
USB cable



Charger

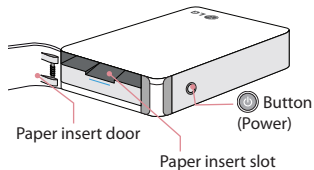
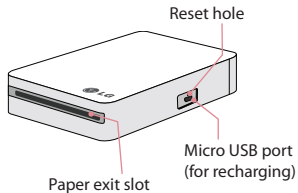


ZINK Photo Paper



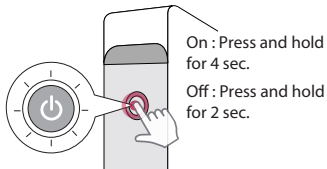
Owner's manual

## Product Overview







## Power On / Off

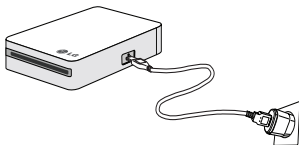


### ! Note


- When turning the device on, the  button flashes for 5 sec. Then printing is available.
- The LED indicator ( button) shows the device condition. For more information, see "About LED indicator" on page 22.



## STEP 2 Charging Battery

This device uses built-in battery. Before using it, charge the battery in full. (Refer to below)




Battery charging time : 1.5 hours

Checking the charging status with  button

- Charging :  / 100 % :  (When power-off)
- 10 % : flashes for about 3 sec.
- 0 % : flashes for about 30 sec. and turns off.
- LG Pocket Photo is always charged when connected to the power supply except for being printed.

#### Charger (AC Adapter)

- Model : MCS-01ET
- Manufacturer : TEN PAO INTERNATIONAL LTD.
- Input : 100 - 240 V ~, 50 / 60 Hz
- Output : 5 V  1.2 A



#### Caution

- Handle with care during charging to prevent electric shock.
- Do not place near heating appliance.
- Do not disassemble or deform.
- Do not give shock on.
- Avoid too high or low temperature or humidity.

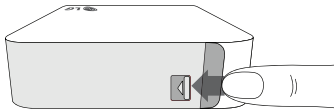


#### Note

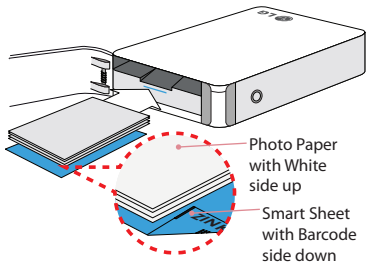
- You can connect the device to PC using the supplied USB cable, but charging time can be longer.
- The operating time on battery may vary depending on the battery status, operational status and environment conditions.
- When the battery is discharged, printing is available after charging it for more than 10 min. (Charge in full to print in a row.)

## STEP 3 Inserting Photo Paper

1. Open the Paper insert door.



2. Unwrap the pack of the photo papers.
3. Slide Smart Sheet (Blue) and photo papers together into the Paper insert slot. Smart Sheet will be ejected automatically before first printing.
  - Do not insert more than 1 pack (10 Photo papers and 1 Smart Sheet). Otherwise 2 papers may be ejected at once or paper jam may occur.
  - Refill the device after using up the papers in.
  - Do not push the papers deeper into Paper insert slot.



## Cleaning printer head using Smart Sheet

Smart Sheet cleans printer head and calibrates colors on photo. Keep the best print quality by using it repeatedly.

## Paper Jam Solution

Do not pull the paper out. Turn the device off and on again, the paper will be ejected automatically.

If this problem is not solved, please refer to "Troubleshooting".



### Caution

- Do not forcefully pull the paper out during printing. It may result in malfunction.
- Do not damage or bend the papers.
- Using soiled paper may result in malfunction.
- Using photo papers from other company may result in malfunction or paper jam.
- Do not place inside a car or, expose to direct sunlight or moisture.
- Do not leave in a place where the temperature or humidity is too high or low. It may reduce the quality of the printed photo.



### Note

- Handle with care when you touch the paper not to get dirt on.
- Ensure to use the papers within its valid date.
- Once unpacked, the papers may begin to curl up after a period of time. It is recommended to use them as soon as possible.

## STEP 4 Installing App

### Installing App for Android phone

#### From Play Store (Android market)

Search for "LG Pocket Photo".

#### Using QR code

Scan the QR code on the product box or the cover of this manual.

## Using NFC

Refer to "Printing using NFC" on page 16.

## App Setting

Set the options in [Setting].



- **NFC\*** : Prints using NFC (NFC-enabled phone only)
- **Bluetooth** : Prints using Bluetooth
- **GPS\*\*** : Saves the location where you took a photo

\* NFC : Near Field Communication

\*\* GPS : Global Positioning System using a satellite

## See "Help" for details

For more information about the App, touch "Help".



## Installing App for iPhone

### From App Store

Search for "LG Pocket Photo".

### Using QR code

Scan the QR code on the product box or the cover of this manual.

## Setting Bluetooth of iPhone

1. On your iPhone's home screen, touch [Settings].
2. Touch "Bluetooth" and touch the slider to turn Bluetooth [On].
3. To connect your Pocket Photo device to the iPhone, turn on your device and make sure it is discoverable mode.
4. When your iPhone found the device, touch the name of Pocket Photo on the iPhone screen.



### See "Help" for details

For more information about the App, touch "Help".



## STEP 5 Printing Photo

### Printing using Android phone

#### Printing using Bluetooth

Preparation : Turn the device on, and start printing with the white LED (  ) turning on.

1. Run LG Pocket Photo App on Android phone.
2. Select a photo to print, and touch .
3. Touch [OK], then it will start searching for Bluetooth devices.
4. When LG Pocket Photo is paired for the first time, [Bluetooth pairing request] appears. To start printing, touch [Pairing] or input the PIN code '0000'.
  - If Smart Sheet is in the device, it will be ejected before starting printing.

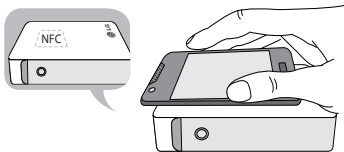


- ! You can print photos directly from Android phones or PC via Bluetooth without the App. Choose a photo and select [Bluetooth] in [Share] or [Menu].

## Printing using NFC (NFC)

Check whether your Android phone supports NFC first.

- How to read NFC tag : Make smartphone get near to NFC tag on the device.



1. Tagging for the first time, it links to Play Store where you can download LG Pocket Photo App.
2. Go to [Setting] in the App installed, and check [NFC].



3. Choose a photo to print and tag, then printing is started immediately. From this time, you can run the App and print a photo by just tagging.

### Setting Pocket Photo App of Android phone

You can check remaining battery, the number of the photos printed, device version, MAC address, and change the setting of print mode, etc.

1. Run LG Pocket Photo App on Android phone.  
(To check [Device information], set to [On] the Bluetooth of smartphone.)



2. Go to [Setting].
3. Touch [Device Information].




Auto Exposure	Corrects color in the image. (ON/OFF)
Paper Full	Prints without white space. (The edge of the image can be cut off.)
Image Full	Prints an image as a whole. (White space can occur at the edge of the paper.)
Auto Power Off	Set a time so that the device turns itself off. (Default is [5 min]. If you set to [Off], the device can be on for up to 2.5 hours when fully charged.)

## Printing using iPhone

### Printing using Bluetooth

Preparation : Turn the device on, and start printing with the white LED (  button) turning on.

1. Run LG Pocket Photo App on iPhone.
2. Select a photo to print, and touch .
3. "Do you want to print?" message will be appeared. Touch [OK] to start printing.
  - If Bluetooth is not connected, " Paired device not found" message is appeared. (refer to the Bluetooth setting for iPhone.)
  - If Smart Sheet is in the device, it will be ejected before starting printing.



## Setting iPhone Pocket Photo App

You can check remaining battery, the number of the photos printed, device version, MAC address, and change the setting of print mode, etc.

1. Run LG Pocket Photo App on iPhone.  
(To check [Device information], set to [On] the Bluetooth of iPhone.)
2. Go to [Setting].
3. Touch Setting options to change.



Auto Exposure	Corrects color in the image. (ON/OFF)
Paper Full	Prints without white space. (The edge of the image can be cut off.)
Image Full	Prints an image as a whole. (White space can occur at the edge of the paper.)
Auto Power Off	Set a time so that the device turns itself off. (Default is [5 min]. If you set to [Off], the device can be on for up to 2.5 hours when fully charged.)

## Notes on the printing

- The color of impression can be different between printed photo and image on smartphone's display.
- Once the battery is fully charged, you can print up to 25 papers in a row. It depends on the battery condition.
- The Bluetooth searching and transferring may fail depending on its environment. Check the Bluetooth condition on your phone and try again.
- If there are more than a LG Pocket Photo device, check MAC address on the label to choose one you want to use.  
(Refer to "Checking Label" on page 21.)

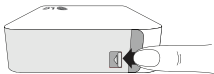


### Caution

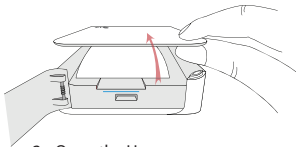
- Do not pull paper out by force during printing.
- Do not open the paper insert door during printing.
- Do not place an object at the front of the Paper exit slot.
- If the device is vibrated or given shock, the quality of the printed photo may be reduced.

## Checking Label

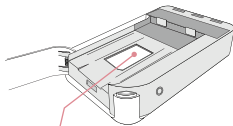
In case there are more than a LG Pocket Photo device, check MAC address on the product label to choose one you want to use.



1. Open the Paper insert door.



2. Open the Upper cover.



3. You can find the product label.

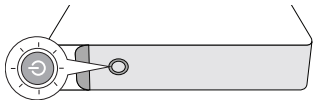





### Caution







- Be sure the device is off before opening. Be sure the Paper insert door is opened when you close the Upper Cover.
- It is recommended not to open the Upper cover as possible except for checking the label.
- Do not detach the black rubber pad. It may cause malfunction.

## About LED Indicator

The LED indicator (Ⓞ button) shows the device condition.



LED color	Condition/Power	Description
	Waiting/ On	Waits for printing. Device turns itself off if it is left unused for a while.
	Full charge/ Off	To print, turn on the device.
	Charging/ Off	To print, turn on the device.

 ↔ 	Error/ On	No paper, Paper jam, Cancelled, Opened, Low temperature, Unsupported file format
 ↔ 	Low battery/ On	To print, charge the device.
	Printing/ On	Transferring data via Bluetooth, Printing
 ↔ 	Cooling mode/ On	After continuous prints the device may automatically cool down its internal temperature. Wait for a while to print again.

## Specifications

Photo size	50 mm x 76 mm (Dot size : 640 x 1224)
Image file type/size	JPEG (Baseline) / less than 10 MB (Progressive JPEG is not supported.)
Media paper used	ZINK™ Photo Paper (exclusive for LG)
Media paper storage environment	Temperature : 20 - 25 °C Humidity : 40 - 55 % RH
Device operation environment	Temperature : 5 - 40 °C Humidity : less than 70 % (35 °C) (An temperature alert pops up in the App.)
Optimum print environment	Temperature : 15 - 32 °C Humidity : less than 70 % (32 °C)

LED indicator	Power / Waiting / Bluetooth transmitting / Charged / Discharged / Error / Condition of printer
Communication	Bluetooth 2.1 + EDR Operation distance : about 10 m
External connector	Micro USB port for charging battery
Bus Power Supply (USB)	DC 5 V $\overline{\text{---}}$ 1.2 A
Battery life	500 mAh Li-Polymer rechargeable battery Maximum 25 prints when fully charged
Power supply	500 mAh Li-Polymer rechargeable battery AC adapter (DC 5 V $\overline{\text{---}}$ 1.2 A)
Image resolution	More than 1280 x 2448 pixels

Dimensions (W x D x H)	72.4 mm x 120.9 mm x 24 mm
Net Weight	212 g


- Your phone may be incompatible with the device depending on its manufacturer, environment or (Android or iOS) operating system.
- Design and specifications are subject to change without prior notice.

## Troubleshooting

Symptom	Cause / Solution
No power	The battery is discharged. Be sure the device is connected to charger or PC properly when charging.
Bluetooth pairing does not work well.	Switch Bluetooth off and on again on your smartphone, then pair with the device in the smartphone's settings. Turn on the device and try printing (pairing) again in 5 sec. Be sure the device is on.



The paper jammed before printing.	1. Turn the device off and on again then paper is ejected automatically.
The paper jammed during printing.	2. If above solution does not work, open the Upper cover and arrange the papers. Then insert them with Smart Sheet (Blue) or pull the paper out slowly and gently.
The printed photo has lines.	Open the Upper cover, arrange the papers and insert them with Smart Sheet locating at the bottom. Then try printing again. (To open the Upper cover, refer to "Checking Label" on 21.)
No or incomplete image is printed.	
The edge of the image on the photo is cut off.	Set [Print mode] to [Image Full] in the App's setting then the image is printed as a whole.

White space appears at the edge of the paper.	When [Print mode] is set to [Image Full], white space may appear if the aspect ratio of the paper and your image is not the same. When [Paper Full], the edge of the image can be cut off or little white space at the edge of the paper may appear.
Quality of printed photo is too low.	In case you magnify an image using [  , +] menu in the App, the quality of the printed photo may be reduced.  Turn off the device and insert Smart Sheet locating at the bottom of the papers. Then try printing again.  Be sure the photo size is bigger than the proper resolution.(1280 x 2448 pixels)

Device does not print.	Be sure there are papers in the device.
	It may take time to print after Smart Sheet is ejected.
	Be sure the photo file is less than 10 MB. Baseline JPEG format is supported only.
Device is turned off automatically.	Check [Auto Power Off] time in the App's setting.
Above solutions do not work.	Press Reset hole with a pointed thing like mechanical pencil to initialize.

	Телефон	Режим работы	Интернет
<b>Россия</b>	8-800-200-7676	Круглосуточно	<a href="http://www.lg.com">http://www.lg.com</a>
<b>Беларусь</b>	8-820-0071-1111		
<b>Латвия</b>	802-00-201	9:00 - 17:00 (Пн.-Пт.)	
<b>Литва</b>	8-800-08081		
<b>Эстония</b>	800-9990		
<b>Украина</b>	0-800-303-000	8:00 - 21:00 (Пн.-Пят.) 9:00 - 18:00 (Суб., Вс.)	
<b>Казахстан</b>	8-8000-805-805	9:00-20:00 (Пн.-Пят.) 9:00-18:00 (Суб., Вс.)	
	2255 (для мобильных телефонов)		
<b>Кыргызстан</b>	8-0000-710-005	Круглосуточно	
<b>Узбекистан</b>	8-800-120-2222	9:00 - 18:30 (Пн.- Пят.) 9:00 - 15:00 (Суб.)	



#### **Україна**

Name and address of importer:

ПІІ 'ЛГ Електронікс Україна', Україна, 01004, м. Київ, вул. Басейна, 4 (літера А),  
тел.: +38 (044) 201-43-50, факс: +38 (044) 201-43-73

#### **Российская Федерация**

Импортер ООО "ЛГ Электроник Рус"

Адрес импортера : 143160 Российская Федерация, Московская область, Рузский район, сельское поселение Дороховское, 86 км. Минского шоссе, д.9

Адрес производителя : ЛГ Электроникс (Хужоу) Инк., завод Хатаи, 516006, Китай, пров. ГуанДонг; г. Хужоу, Промышленная зона Жонгкай, Индустриальный парк Хутай, ХуФенг Донг Уи Роуд, 13.

Сделано в Китае

#### **Қазақстан Республикасы**

Импорттаушы АҚ "ЭЛ Джи Электроникс Алматы Қазақстан", 050061, Алматы қ., к. Кокорай, 2А  
Өндірушінің мекенжайы : 516006, Қытай, ГуанДонг ауданы, Хужоу қаласы, Жонгкай өнеркәсіптік аймағы, Хутай Индустриялық саябағы, ХуФенг Донг Уи Роуд, 13.

Қазақстан Республикасы территориясында тұтынушылардан келіп түскен талаптар мен ұсыныстарды қарайтын және тауарды жөндеу мен техникалық қызмет көрсететін ұжым:

АҚ «Эл Джи Электроникс Алматы Казахстан», 050061, Қазақстан Республикасы, Алматы қ., Кокорай, 2А. Басқа сервис орталықтары жайында мағлұматты "Тұтынушыға қызмет көрсету орталығына" телефон шалу арқылы білуге болады.

Қытайда жасалған

