



# OWNER'S MANUAL

# NEW TYPE CYCLONE VACUUM CLEANER

This information contains important instructions for the safe use and maintenance of the vacuum cleaner. Especially, please read all of the information on page 3, 4, 5 for your safety. Please keep this manual in an easily accessible place and refer to it anytime.

VK7320\*\*\*\*\*



MFL67868623

[www.lg.com](http://www.lg.com)

# Table of contents

<b>Important safety instructions</b> .....	<b>3~5</b>
<b>How to use</b> .....	<b>6~22</b>
Assembling vacuum cleaner .....	6~7
Operating vacuum cleaner .....	8
Using carpet and floor nozzle / Hard floor nozzle .....	9
Using carpet master nozzle and mini turbine nozzle .....	10
Using Dual mop nozzle / How to use, replace and clean the microfiber cloth .....	11
Using 2 in 1 nozzle .....	12
Using accessory nozzles .....	13
Using sani punch nozzle .....	14~18
Emptying the dust tank .....	19
Cleaning dust tank .....	20
Cleaning dust separator .....	21
Cleaning exhaust filter .....	22
<b>What to do if your vacuum cleaner does not work</b> .....	<b>23</b>
<b>What to do when suction power decreases</b> .....	<b>23</b>

# IMPORTANT SAFETY INSTRUCTIONS

Read and follow all instructions before using your vacuum cleaner to prevent the risk of fire, electric shock, personal injury, or damage when using the vacuum cleaner. This guide do not cover all possible conditions that may occur. Always contact your service agent or manufacturer about problems that you do not understand. This appliance complies with the following EC Directives :-2006/95/EC Low Voltage Directive -2004/108/EC EMC Directive.



This is the safety alert symbol.

This symbol alerts you to potential hazards that can kill or hurt you and others.

All safety messages will follow the safety alert symbol and either the word "WARNING" or "CAUTION."

These words mean:

## WARNING

This symbol will alert you to hazards or unsafe practices which could cause serious bodily harm or death.

## CAUTION

This symbol will alert you to hazards or unsafe practices which could cause bodily injury or property damage.

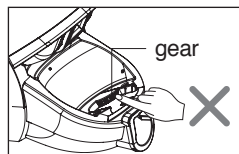
## WARNING

1. This appliance is not intended for use by persons (including children) with reduced physical, sensory or mental capabilities, or lack of experience and knowledge, unless they have been given supervision or instruction concerning use of the appliance by a person responsible for their safety.
2. Children should be supervised to ensure that they do not play with the appliance.
3. If the supply cord is damaged, it must be replaced by LG Electronics Service Agent in order to avoid a hazard
4. This appliance can be used by children aged from 8 years and above and persons with reduced physical, sensory or mental capabilities or lack of experience and knowledge if they have been given supervision or instruction concerning use of the appliance in a safe way and understand the hazards involved. Children shall not play with the appliance. Cleaning and user maintenance shall not be made by children without supervision.

# IMPORTANT SAFETY INSTRUCTIONS

## WARNING

- **Do not plug in if control knob is not in OFF position.**  
Personal injury or product damage could result.
- **Keep children away and beware of obstructions when rewinding the cord to prevent personal injury**  
The cord moves rapidly when rewinding.
- **Disconnect electrical supply before servicing or cleaning the unit or when cleaner is not in use.**  
Failure to do so could result in electrical shock or personal injury.
- **Do not use vacuum cleaner to pick up anything that is burning or smoking such as cigarettes, or hot ashes.**  
Doing so could result in death, fire or electrical shock.
- **Do not vacuum flammable or explosive substances such as gasoline, benzene, thinners, propane (liquids or gases).**  
The fumes from these substances can create a fire hazard or explosion. Doing so could result in death or personal injury.
- **Do not handle plug or vacuum cleaner with wet hands.**  
Doing so could result in death or electrical shock.
- **Do not unplug by pulling on cord.**  
Doing so could result in product damage or electrical shock. To unplug, grasp the plug, not the cord.
- **Keep hair, loose clothing, fingers, and all parts of the body away from openings and moving parts.**  
Failure to do so could result in electrical shock or personal injury.
- **Do not pull or carry by cord, use cord as a handle, close a door on cord, or pull cord around sharp edges or corners. Do not run vacuum cleaner over cord. Keep cord away from heated surfaces.**  
Failure to do so could result in electrical shock or personal injury or fire or product damage.
- **The hose contains electrical wires. Do not use it if it is damaged, cut or punctured.**  
Failure to do so could result in death, or electrical shock.
- **Do not allow to be used as toy. Close attention is necessary when used by or near children.**  
Personal injury or product damage could result.
- **Do not use the vacuum cleaner if the power cord or plug is damaged or faulty.**  
Personal injury or product damage could result. In these cases, contact LG Electronics Service Agent to avoid hazard.
- **Do not use vacuum cleaner if it has been under water.**  
Personal injury or product damage could result. In these cases, contact LG Electronics Service Agent to avoid hazard.
- **Do not continue to vacuum if any parts appear missing or damaged.**  
Personal injury or product damage could result. In these cases, contact LG Electronics Service Agent to avoid hazard.
- **Do not use an extension cord with this vacuum cleaner.**  
Fire hazard or product damage could result.
- **Using proper voltage.**  
Using improper voltage may result in damage to the motor and possible injury to the user. Proper voltage is listed on the bottom of vacuum cleaner.
- **Turn off all controls before unplugging.**  
Failure to do so could result in electrical shock or personal injury.
- **Do not change the plug in any way.**  
Failure to do so could result in electrical shock or personal injury or product damage. Doing so result in death. If plug does not fit, contact a qualified electrician to install the proper outlet.  
If the supply cord is damaged, it must be replaced by the manufacturer, its service agent or similarly qualified persons in order to avoid a hazard.
- **Repairs to electrical appliances may only be performed by qualified service engineers.**  
Improper repairs may lead to serious hazards for the user.
- **Do not put fingers near the gear.**  
Failure to do so could result in personal injury.



# IMPORTANT SAFETY INSTRUCTIONS

## CAUTION

- **Do not put any objects into openings.**  
Failure to do so could result in product damage.
- **Do not use with any opening blocked: keep free of dust, lint, hair, and anything that may reduce air flow.**  
Failure to do so could result in product damage.
- **Do not use vacuum cleaner without the dust tank and/or filters in place.**  
Failure to do so could result in product damage.
- **Always clean the dust bin after vacuuming carpet cleaners or fresheners, powders and fine dust.**  
These products clog the filters, reduce airflow and can cause damage to the cleaner. Failure to clean the dust bin could cause permanent damage to the cleaner.
- **Do not use vacuum cleaner to pick up sharp hard objects, small toys, pins, paper clips, etc.**  
They may damage the cleaner or dust bin.
- **Store the vacuum cleaner indoors.**  
Put the vacuum cleaner away after use to prevent tripping over it.
- **The vacuum cleaner is not intended to use by young children or infirm people without supervision.**  
Failure to do so could result in personal injury or product damage.
- **Only use parts produced or recommended by LG Electronics Service Agents.**  
Failure to do so could result in product damage.
- **Use only as described in this manual. Use only with LG recommended or approved attachments and accessories.**  
Failure to do so could result in personal injury or product damage.
- **To avoid personal injury and to prevent the machine from falling when cleaning stairs, always place it at the bottom of stairs.**  
Failure to do so could result in personal injury or product damage.
- **Use accessory nozzles in sofa mode.**  
Failure to do so could result in product damage.
- **Don't grasp the tank handle when you are moving the vacuum cleaner.**  
The vacuum cleaner's body may fall when separating tank and body. Personal injury or product damage could result. You should grasp the carrier handle when you are moving the vacuum cleaner. (Page 19)
- **Make sure the filters (exhaust filter and motor safety filter) are completely dry before replacing in the machine.**  
Failure to do so could result in product damage.
- **Do not dry the filter in an oven or microwave.**  
Failure to do so could result in fire hazard.
- **Do not dry the filter in a clothes dryer.**  
Failure to do so could result in fire hazard.
- **Do not dry near an open flame.**  
Failure to do so could result in fire hazard.
- **Do not use filters that is not dried.**
- **If the power cord is damaged, it must be replaced by an approved LG Electronics Service Agent to avoid a hazard.**
- **This appliance is not intended for use by persons (including children) with reduced physical, sensory or mental capabilities, or lack of experience and knowledge, unless they have been given supervision or instruction concerning use of the appliance by a person responsible for their safety.**  
Children should be supervised to ensure that they do not play with the appliance.

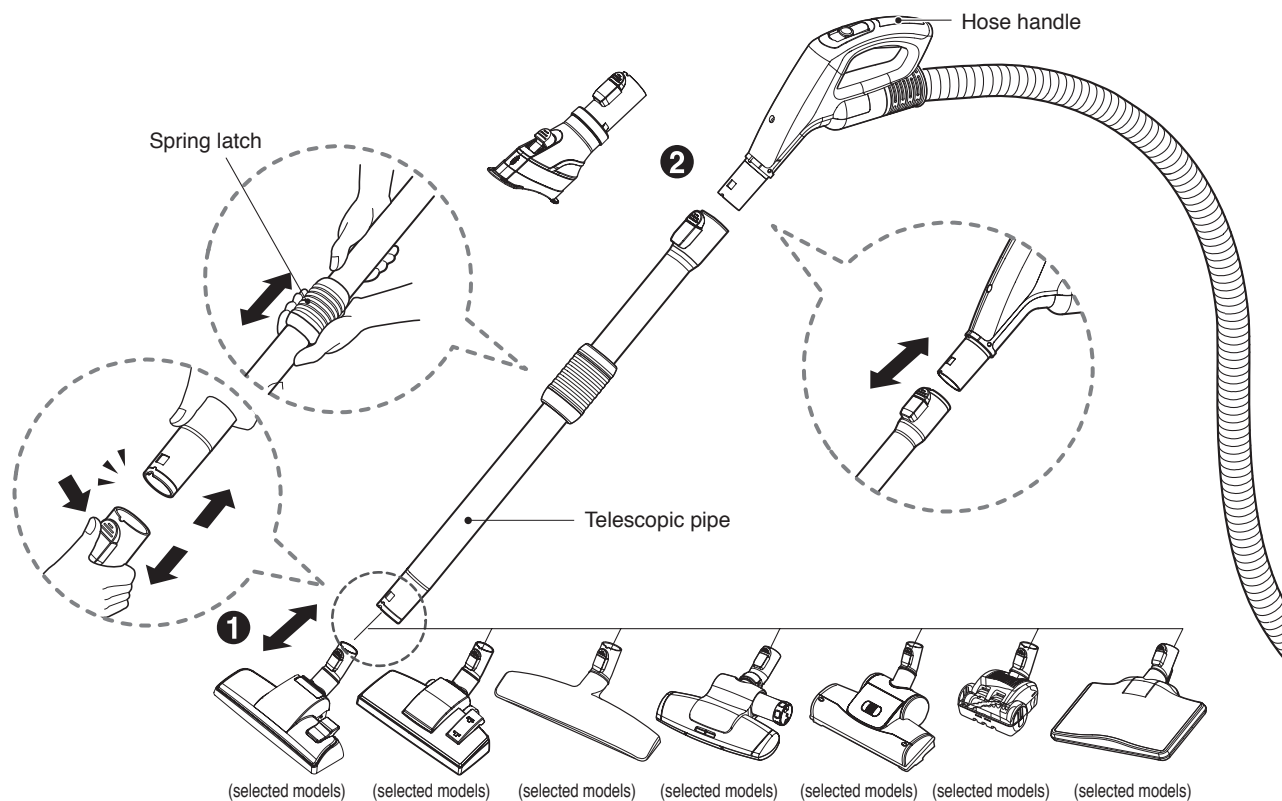
### **Thermal protector :**

This vacuum cleaner has a special thermostat that protects the vacuum cleaner in case of motor overheating. If the vacuum cleaner suddenly shuts off, turn off the switch and unplug the vacuum cleaner. Check the vacuum cleaner for possible source of overheating such as a full dust tank, a blocked hose or clogged filter. If these conditions are found, fix them and wait at least 30 minutes before attempting to use the vacuum cleaner. After the 30 minute period, plug the vacuum cleaner back in and turn on the switch. If the vacuum cleaner still does not run, contact a qualified electrician.

### **NOTE**

This Vacuum is not intended for commercial applications. It must only be used for normal indoor domestic home applications. It must only be used for dry vacuuming.

# How to use Assembling vacuum cleaner

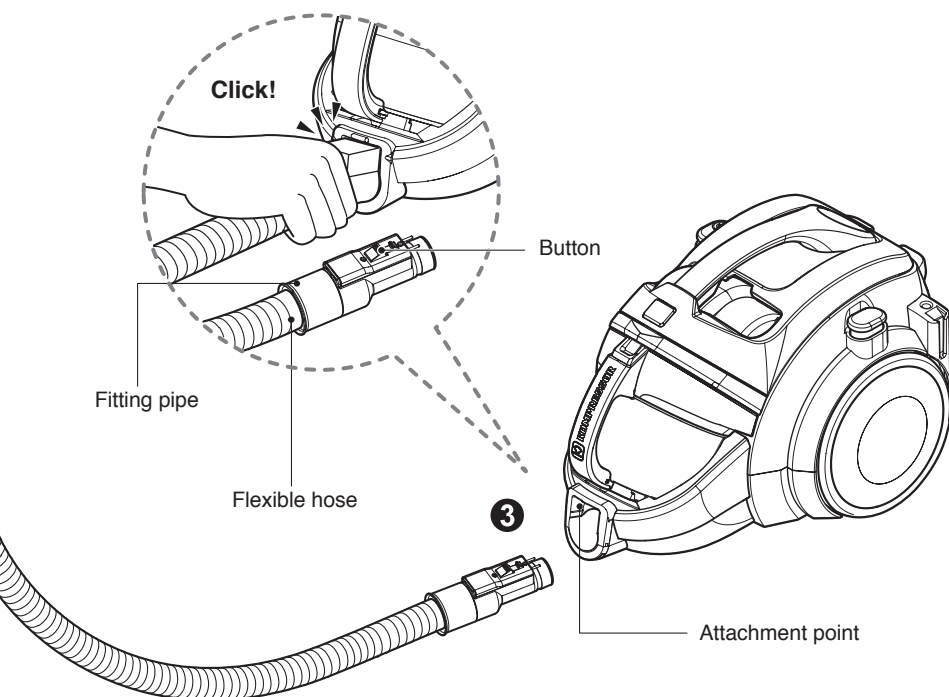


## ❶ Carpet and floor nozzle (selected models)

Push the telescopic pipe into the nozzle.

## ❷ Telescopic pipe

- Push the hose handle firmly into the telescopic pipe.
- Grasp the spring latch to expand.
- Pull out the pipe to desired length.

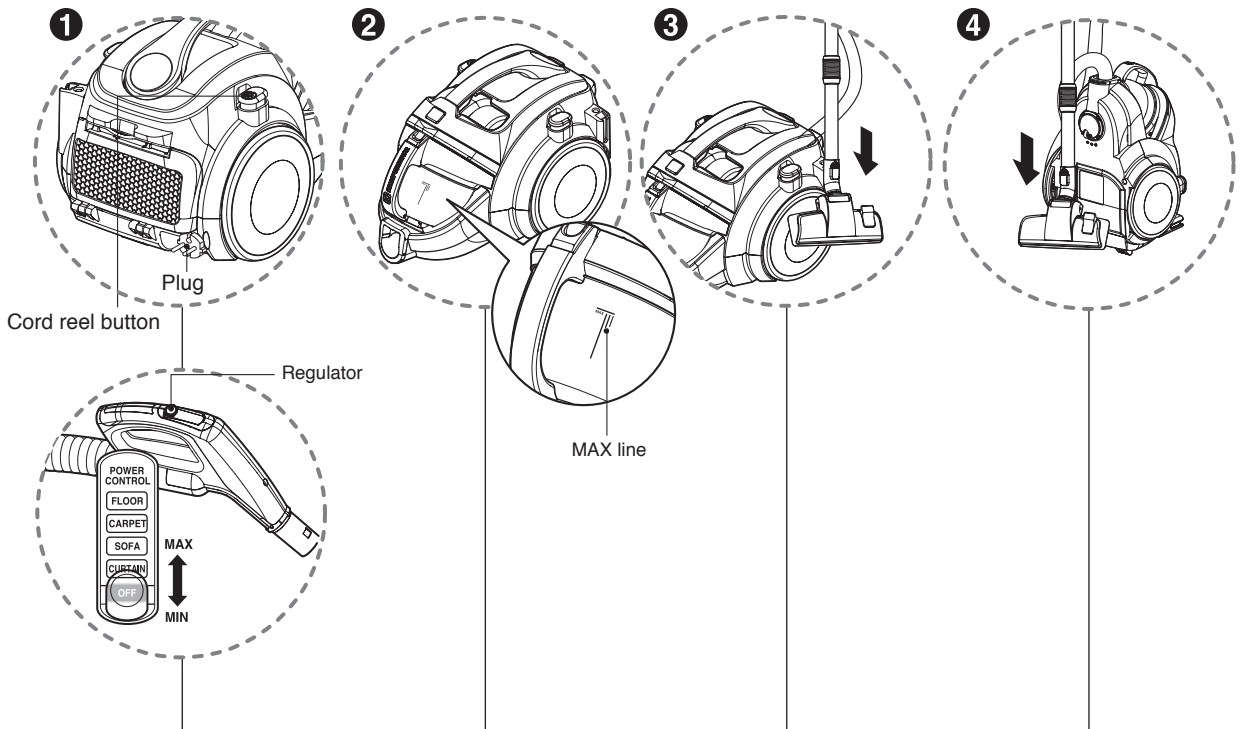


### 3 Connecting the hose to the vacuum cleaner

Push the fitting pipe on the flexible hose into the attachment point on the vacuum cleaner.

To remove the flexible hose from the vacuum cleaner, press the button situated on the fitting pipe, then pull the fitting pipe out of the vacuum cleaner.

# How to use Operating vacuum cleaner



## 1 How to operate

- Pull out the power cord to the desired length and plug into the socket.
- Place the control knob of the hose handle to the required position.
- To turn off, slide control knob to OFF position.
- Press the cord reel button to rewind the power cord after use.
- The Power cord is marked with a yellow and red band marker. The yellow is a warning band that the cord should not be pulled out any further, and the red band means to stop extending the cord as it is at the end of its length.

## 2 Emptying the dust tank 3 Park mode

- Always empty the dust tank when the dust tank level reaches the MAX line.

- To store during vacuuming, for example to move a small piece of furniture or a rug, use park mode to support the flexible hose and nozzle.
  - Slide the hook on the nozzle into the slot on the side of vacuum cleaner.

## 4 Storage

- When you have switched off and unplugged the vacuum cleaner, press the cord reel button to automatically rewind the cord.
- You can store your vacuum cleaner in a vertical position by sliding the hook on the nozzle into the slot on the underside of the vacuum cleaner.

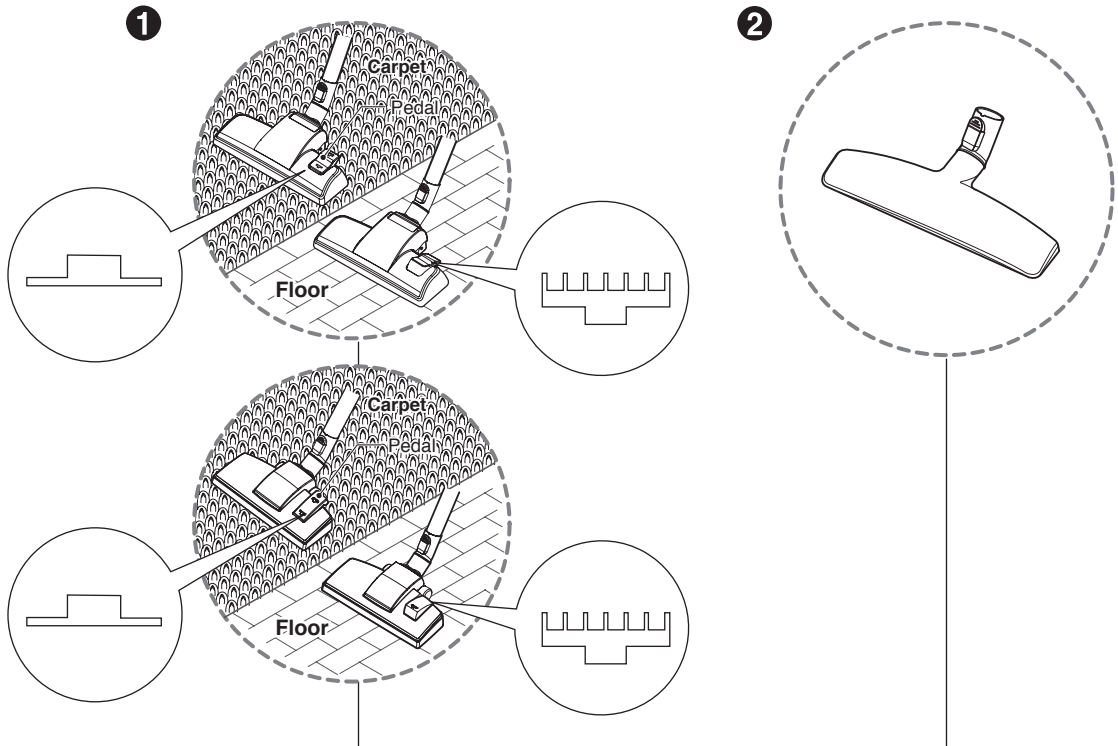
### **⚠ WARNING**

No liquid suction.  
Liquid suction can cause defects.



# How to use

## Using carpet and floor nozzle / Hard floor nozzle



❶ Carpet and floor nozzle (depend on model)

❷ Hard floor nozzle (depend on model)


• **The 2 position nozzle**

This is equipped with a pedal which allows you to alter its position according to the type of floor to be cleaned.

• **Carpet or rug position**

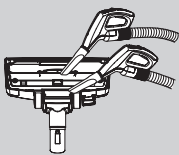
Press the pedal (  ) to lower brush.

• **Hard floor position (tiles, parquets floor)**

Press the pedal (  ) to lift the brush up.

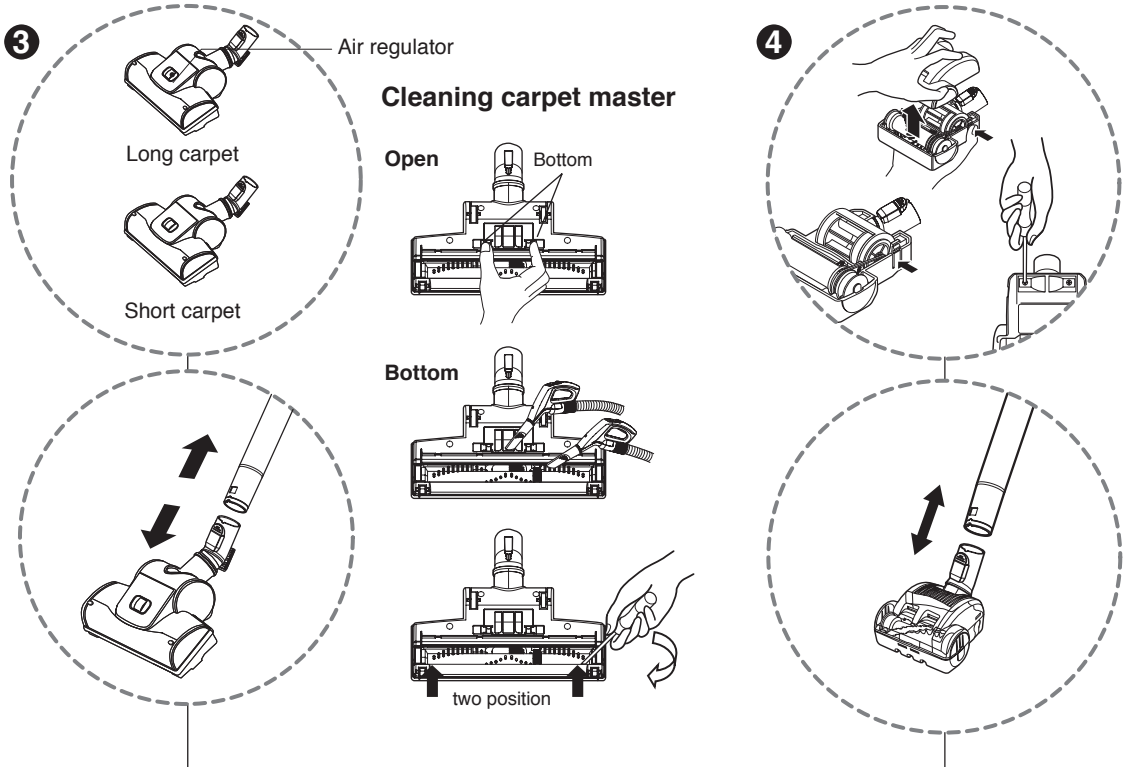
• Efficient cleaning of hard floors (timber, vinyl. etc)

• **Cleaning carpet and floor nozzle**



• Clean the hole and brush of nozzle.

# How to use Using carpet master nozzle and mini turbine nozzle



## 3 Carpet master (selected models)

## 4 Mini turbine nozzle (selected models)

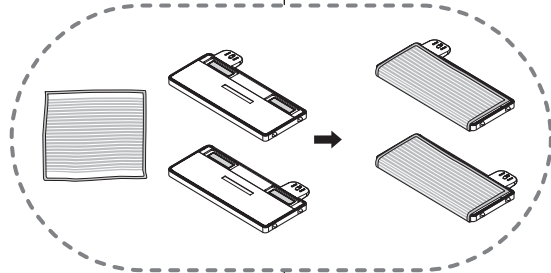
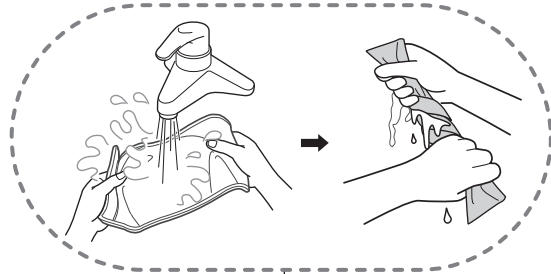
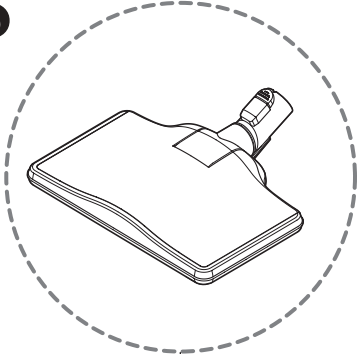
- **Cleaning turbine brush nozzle.**
- Press the button on the rear side of the nozzle to separate the air cover.
- Use the crevice tool to clean the brush and the fan.
- Separate the convertible cover by inserting and pulling it out with the driver to remove any accumulated string, hair, etc.

- Mini turbine is used for stairs and other hard-to-reach places.
- To clean the mini turbine nozzle, remove the nozzle cover :  
Remove 2 screws on the bottom and take mini turbine nozzle cover off as shown.
- Frequently clean and remove hair, string, and lint build-up in the brush area. Failure to do so could damage to mini turbine nozzle.

# How to use

## Using Dual mop nozzle / How to use, replace and clean the microfiber cloth

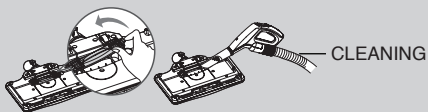
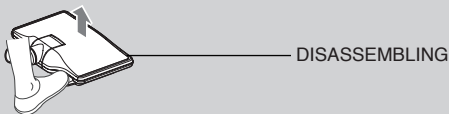
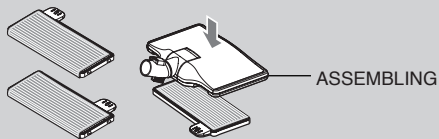
5



### 5 Dual mop nozzle

- The integrated microfiber mop removes fine grit and dust quickly after vacuuming.

#### NOTICE



### How to use, replace and clean the microfiber cloth

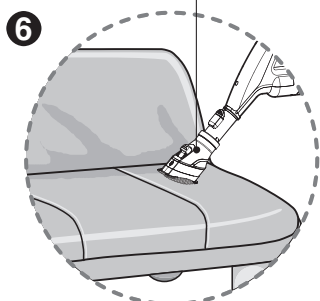
- When the microfiber cloth is attached on the cloth board, make sure soak the microfiber cloth under water and twist completely.
- Microfiber cloth board can be used both sides.
- Reuse the dirty cloth by cleaning it with clean water, soap, detergent etc. and then by completely drying the cloth in the shade.

#### ⚠ CAUTION

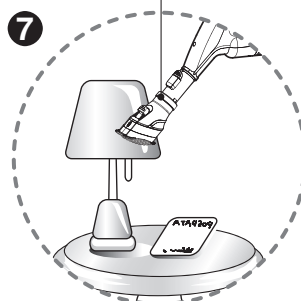
- If you do not completely remove the moisture when using the microfiber cloth, it can cause electric shock and damage the main unit.

# How to use Using 2 in 1 nozzle

Upholstery nozzle

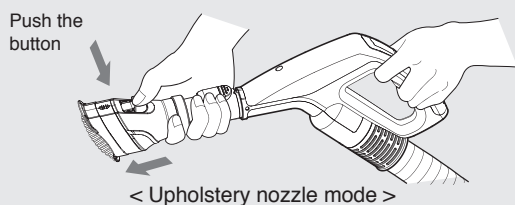


Dusting brush



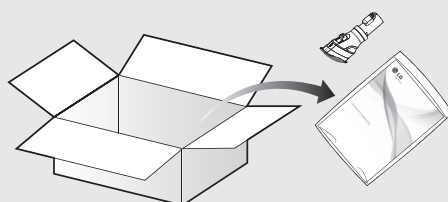
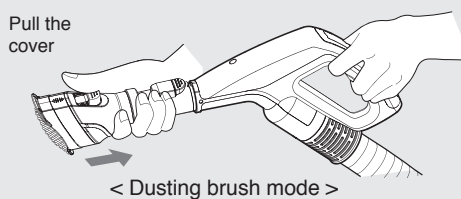
## ⑥ Upholstery nozzle (selected models)

Upholstery nozzle is for vacuuming upholstery, mattresses etc.



## ⑦ Dusting brush (selected models)

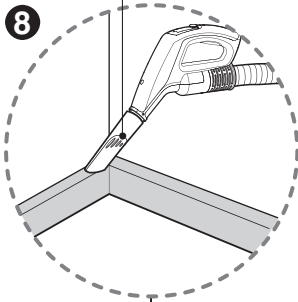
Dusting brush is for vacuuming picture frames, furniture frames, books and other irregular surfaces.



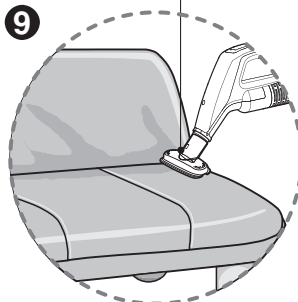
• 2 in 1 nozzle included in the "BOX" with owner's manual (selected models only)

# How to use Using accessory nozzles

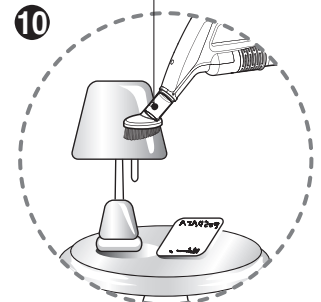
Crevice tool



Upholstery nozzle



Dusting brush



## ⑧ Crevice tool (selected models) ⑨ Upholstery nozzle (selected models) ⑩ Dusting brush (selected models)

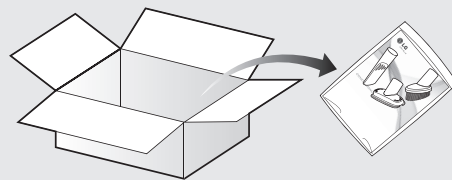
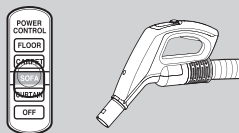
Crevice tool is for vacuuming in those normally hard-to-reach place such as reaching cobwebs or between sofa cushions.

Upholstery nozzle is for vacuuming upholstery, mattresses etc. The thread collectors help to pick up the threads and fluff.

Dusting brush is for vacuuming picture frames, furniture frames, books and other irregular surfaces.

### NOTICE

Use the accessory nozzles in the sofa mode.



• Accessory nozzles included in the "PE BAG" with owner's manual (selected models only)

# How to use Using sani punch nozzle

## Features

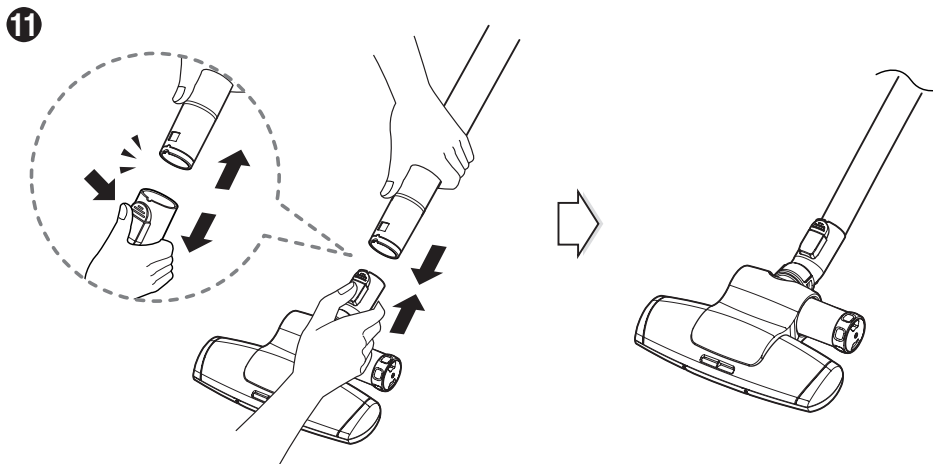
This nozzle picks up even dust inside through beating.  
The bottom part can be separated to be cleaned.  
Since the bottom does not stick to the surface, vacuuming is easy.

## How to use

Follow the directions below for proper use.

## Assembly

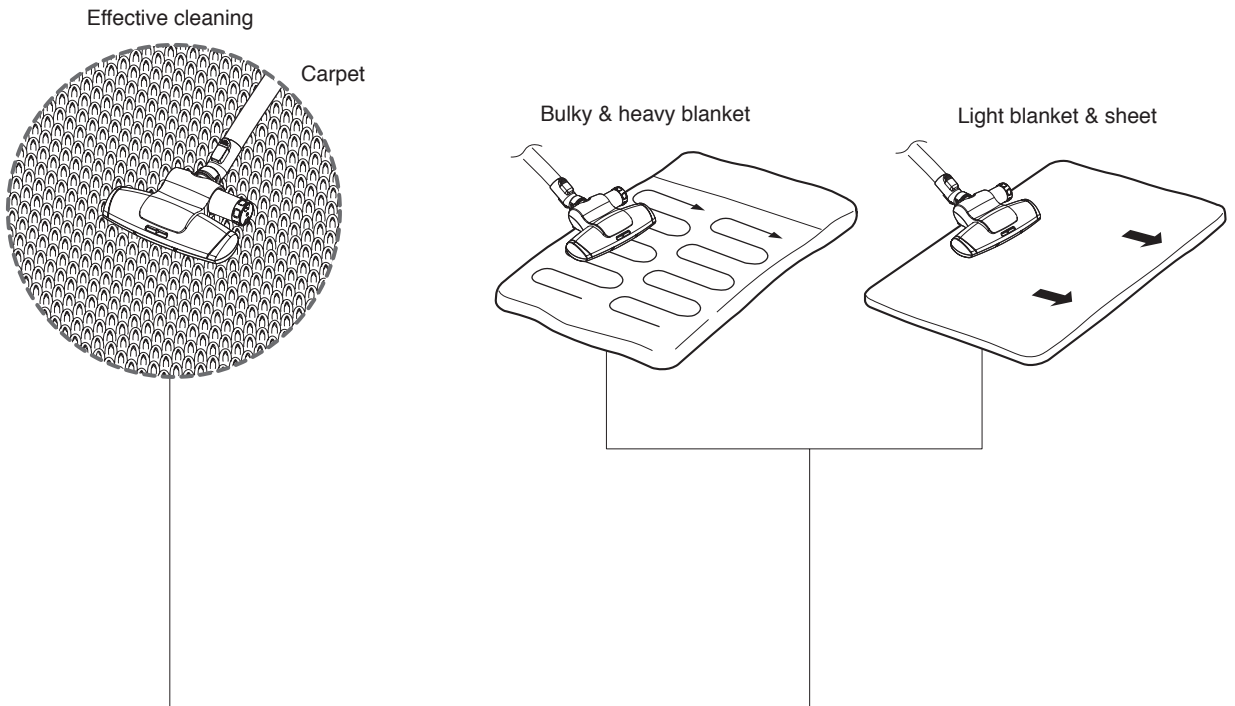
Connect the nozzle to the telescopic pipe.



## ⑪ Sani punch nozzle (depend on model)

Set the suction power control switch to MAX POWER before vacuuming.  
Depending on the type of bedding, handling may be awkward or it may cause a lot of noise.  
If this is the case, adjust the suction power control switch to a lower setting.

This Sani Punch nozzle is for effective cleaning of beds and blankets to remove mites and dust.



### When using on the carpet

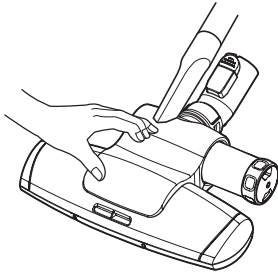
Sani-punch is used for carpet.

### When using on the floor

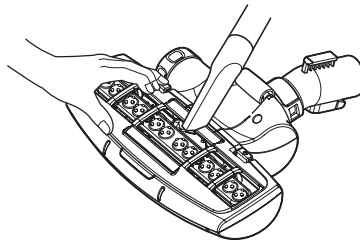
It is easier to clean a light blanket or sheet by pushing the nozzle in the direction of the arrow.  
To increase cleaning efficiency for light blankets, lay on top of a bulky blanket and then clean.

For simple cleaning of the vacuum nozzle, detach the Sani Punch nozzle from the telescopic pipe and attach the crevice tool to vacuum dust.

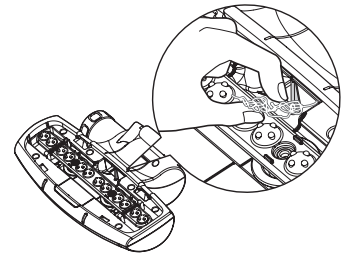
**Top**



**Bottom**



**Inside**



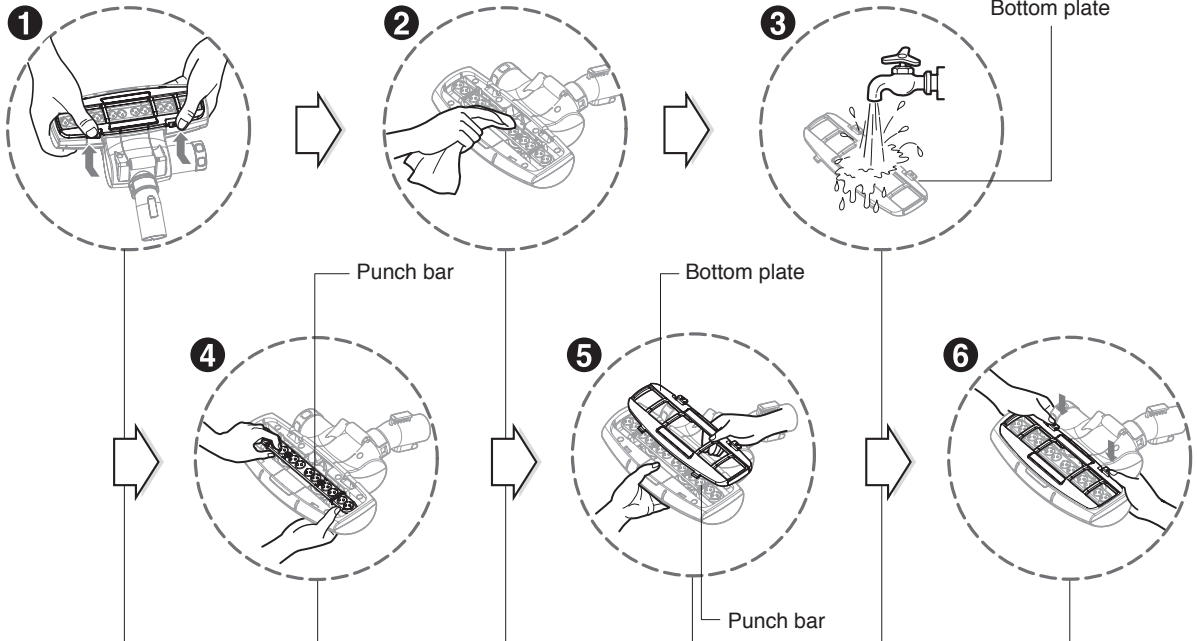
You can remove dust by hand, if you can't remove dust which is inside of nozzle by crevice tool.

Since the vibrator inside is composed of precision parts, never disassemble the body.  
Be careful not to let foreign objects clog the air suction part on top of the vacuum nozzle.  
Since removal of the punch bar may cause performance problems, do not warp or remove it.  
Attach the bottom plate properly before using. Without this bottom plate, it may not function.

Since this vacuum nozzle has been made exclusively for cleaning beds, blankets and upholstery, use it only for these cleaning purposes.  
(Using it to clean the floor may result soiling it or a drop in performance, do not use it for such purposes.)



Follow the instruction below for through washing.  
(Do not soak the entire body of the vacuum nozzle in water, it may cause the vibrator to malfunction)



**1** Press the button on the rear side of the vacuum nozzle to separate the bottom plate.

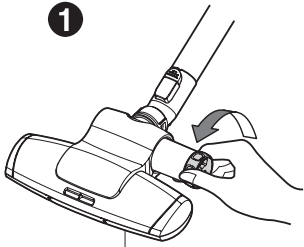
**2** Wipe all the soiled parts of the vacuum nozzle body with a cloth.

**3** Wash the removed bottom plate with water and dry it.

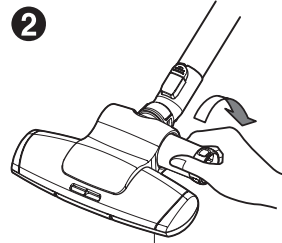
**4** Straighten the punch bar on the lower section.

**5** Insert the attachment projections on bottom plate to the vacuum nozzle grooves.

**6** Push down the tabs to secure.



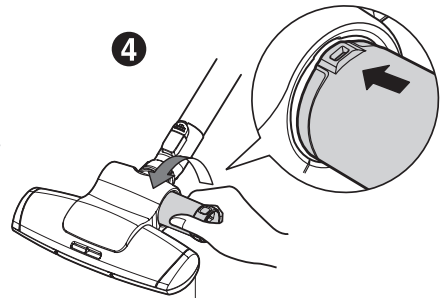
1



2



3



4

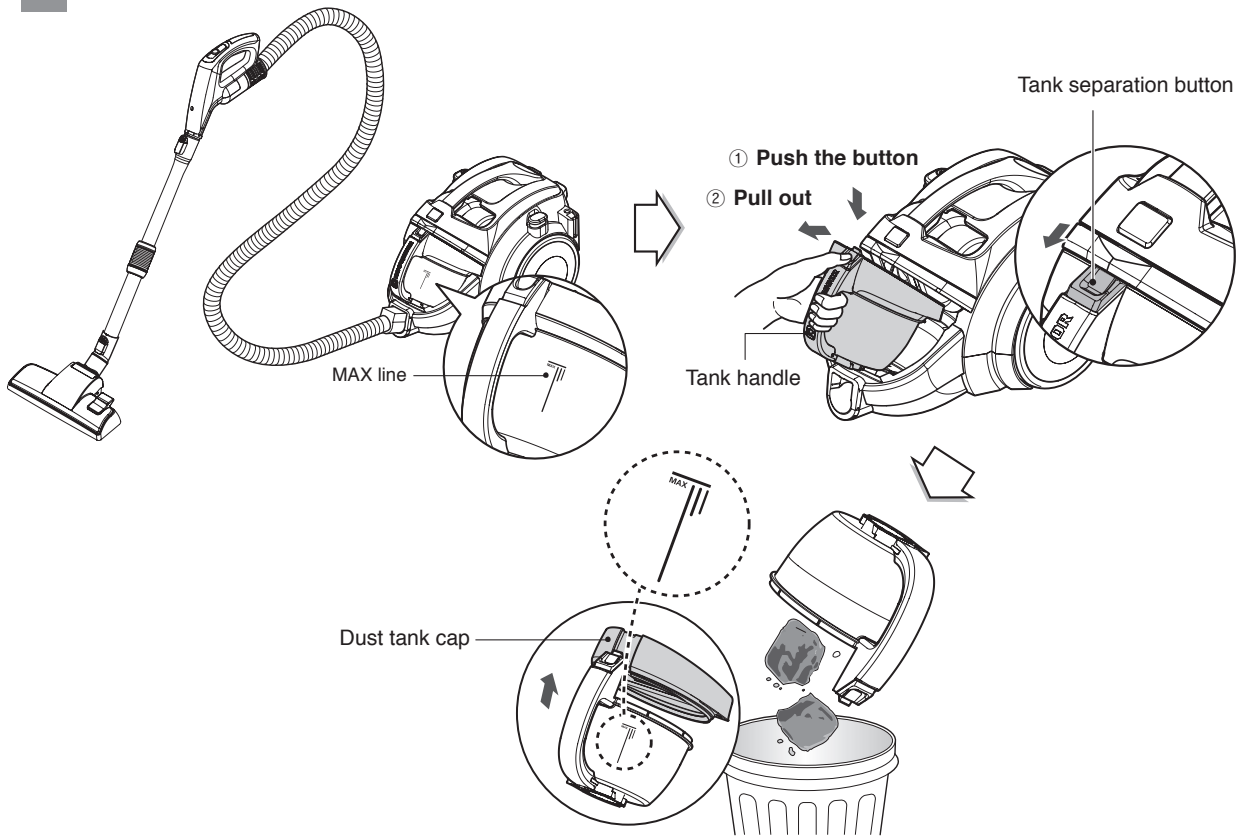
1 Push the button 2-3 times when the dust is filled in the dustbin while cleaning.

2 When the dust is fully filled after cleaning, take the bin and turn it counterclockwise to disconnect

3 Waste the dust in the bin

4 Take the bin to fix into the projection part and then turn it clockwise to connect.

# How to use Emptying the dust tank



The dust tank needs emptying when the dust tank level reaches the MAX line.

- Turn off the vacuum cleaner and unplug it.
- Grasp the handle of the tank and then press the tank separation button.
- Pull out the dust tank.
- Empty the tank and then assemble the dust tank as shown.

## NOTICE

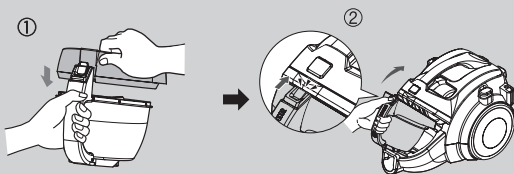
- If suction power decreases after emptying the dust tank, reassemble the dust tank and check for other obstacles.  
➔ next page

## Moving the vacuum cleaner

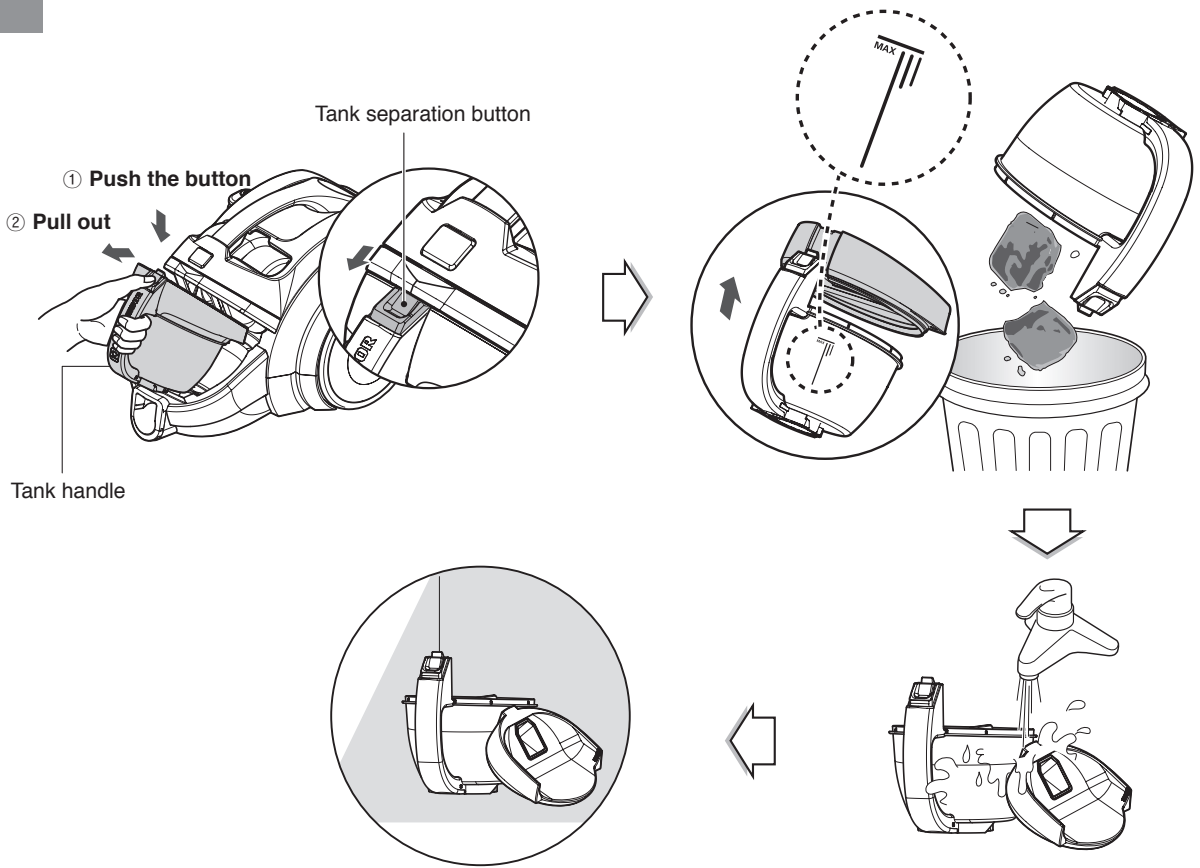
- Don't grasp the tank handle when you are moving the vacuum cleaner.

The vacuum cleaner's body may fall when separating tank and body. You should grasp the carrier handle when you are moving the vacuum cleaner.

## Assembling the dust tank



# How to use Cleaning dust tank



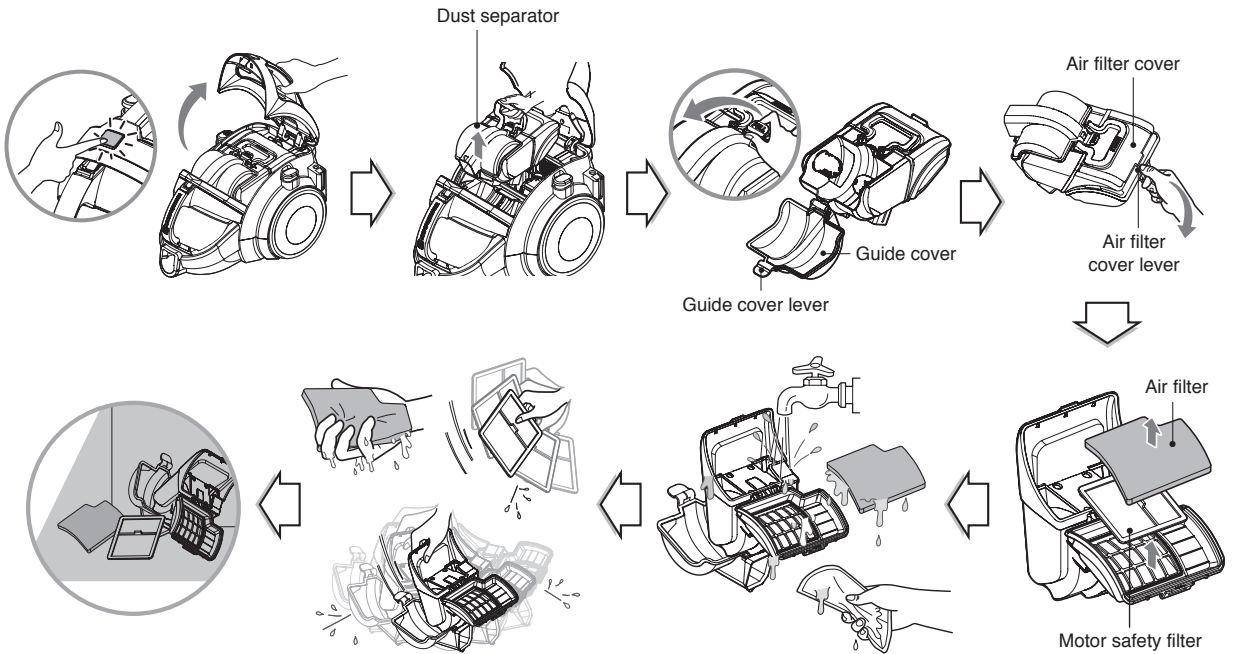
- Press tank separation button and pull out the dust tank.
- Raise the dust tank cap.
- Wash the dust tank.
- Dry fully in shade so that moisture is entirely removed.

## NOTICE

If suction power decreases after cleaning the dust tank, clean the air filter and the motor safety filter. → Next page

# How to use

## Cleaning dust separator - Inside of dust separator, air filter, motor safety filter



If suction power decreases after cleaning the dust tank, clean the air filter and the motor safety filter.

The air filter and the motor safety filter are located on the top of the vacuum cleaner as above the figure.

- Open the vacuum cleaner cover by pushing the button.
- Grasp the handle of the dust separator and take out it.
- Open the guide cover by pulling the guide cover lever and remove the dust.
- Open the air filter cover by pushing the air filter cover lever and take out the air filter.
- Separate the motor safety filter from the dust separator.
- Wash the air filter and the motor safety filter.
- Do not wash filters with hot water.
- Dry fully in shade so that moisture is entirely removed.
- The air filter and the motor safety filter should be cleaned as above the figure.

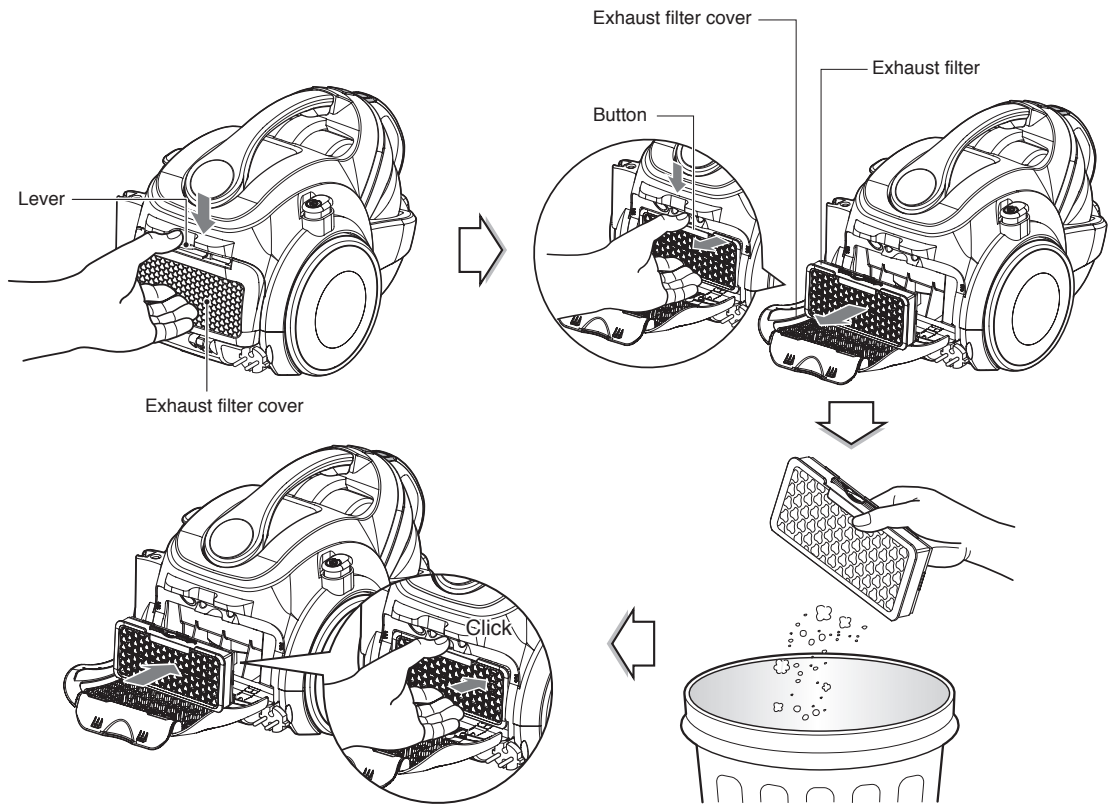
### **WARNING**

Dry fully for more than 24 hours in shade.

### **NOTICE**

**If filters are damaged, do not use them.  
In this case, contact LG Electronics Service Agent.  
Wash filters at least Once a month.**

## How to use Cleaning exhaust filter



- The exhaust filter is a reuseable filter.
- To clean the exhaust filter, open the exhaust filter cover by pushing the button.
- Separate the exhaust filter by pushing the lever.
- Dust off the exhaust filter. (Do not wash the exhaust filter with water.)
- Insert the exhaust filter lugs into the grooves of the motor housing and push the exhaust filter.
- The exhaust filter should be cleaned at least once a year.

## What to do if your vacuum cleaner does not work

Check that the vacuum cleaner is plugged in correctly and that the electrical socket is working.

## What to do when suction power decreases

- Turn off the vacuum cleaner and unplug it.
- Check the telescopic pipe, flexible hose and cleaning tool for blockages or obstructions.
- Check that the dust tank is not full. Empty if necessary.
- Check that the exhaust filter is not clogged. Clean the exhaust filter if necessary.
- Check that the air filter and the motor safety filter are not clogged. Clean them if necessary.
- Check the inside of the dust separator. Clean the inside of the dust separator if necessary.



### **WARNING**

Should it become necessary to replace the moulded plug then the defective plug should be replaced by a qualified electrician.

