

OWNER'S MANUAL

LED MONITOR

(LED TOUCH MONITOR)

Please read this manual carefully before operating your set and retain it for future reference.

LED MONITOR(LED TOUCH MONITOR) MODEL LIST
23ET83V

TABLE OF CONTENTS

3 LICENSE

4 ASSEMBLING AND PREPARING

- 4 Unpacking
- 5 Parts and buttons
- 6 Moving and Lifting the Monitor
- 6 Setting up the Monitor
 - 6 - Mounting on a table
- 8 - Tidying cables

9 USING THE MONITOR

- 9 Connecting to a PC
 - 9 - D-SUB connection
 - 9 - HDMI connection
- 11 - USB cable-PC connection
- 11 - Headphone port connection

12 CUSTOMIZING SETTINGS

- 13 Customizing Settings
 - 13 - Menu Settings
- 14 -PICTURE
- 15 -COLOR
- 16 -DISPLAY
- 16 -VOLUME
- 17 -OTHERS
- 18 SUPER ENERGY SAVING
- 19 Picture Mode

20 TROUBLESHOOTING

23 SPECIFICATIONS

- 24 Preset Modes (Resolution)
- 24 HDMI TIMING
- 24 Indicator

25 PROPER POSTURE

- 25 Proper Posture for Using the Monitor

LICENSE

Each model has different licenses. Visit www.lg.com for more information on the license.

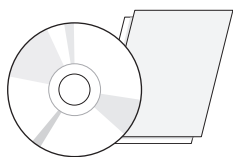


The terms HDMI and HDMI High-Definition Multimedia Interface, and the HDMI logo are trademarks or registered trademarks of HDMI Licensing LLC in the United States and other countries.

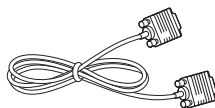
ASSEMBLING AND PREPARING

Unpacking

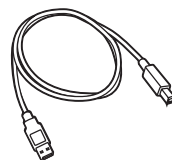
Check your product box for the following items. If there are any missing accessories, contact the local dealer where you purchased your product. The illustrations in this manual may differ from the actual product and accessories.



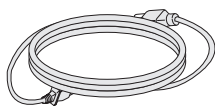
**CD(Owner's Manual) /
Card**



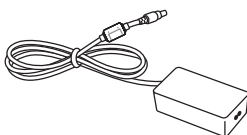
D-SUB Cable
(This cable is not included in
all countries.)



A-B Type USB 2.0 Cable



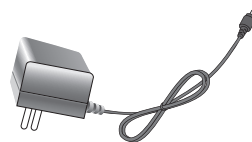
Power Cord



AC-DC Adapter

(Depending on the country)

or



AC-DC Adapter
(Depending on the country)



Cable Tie



CAUTION

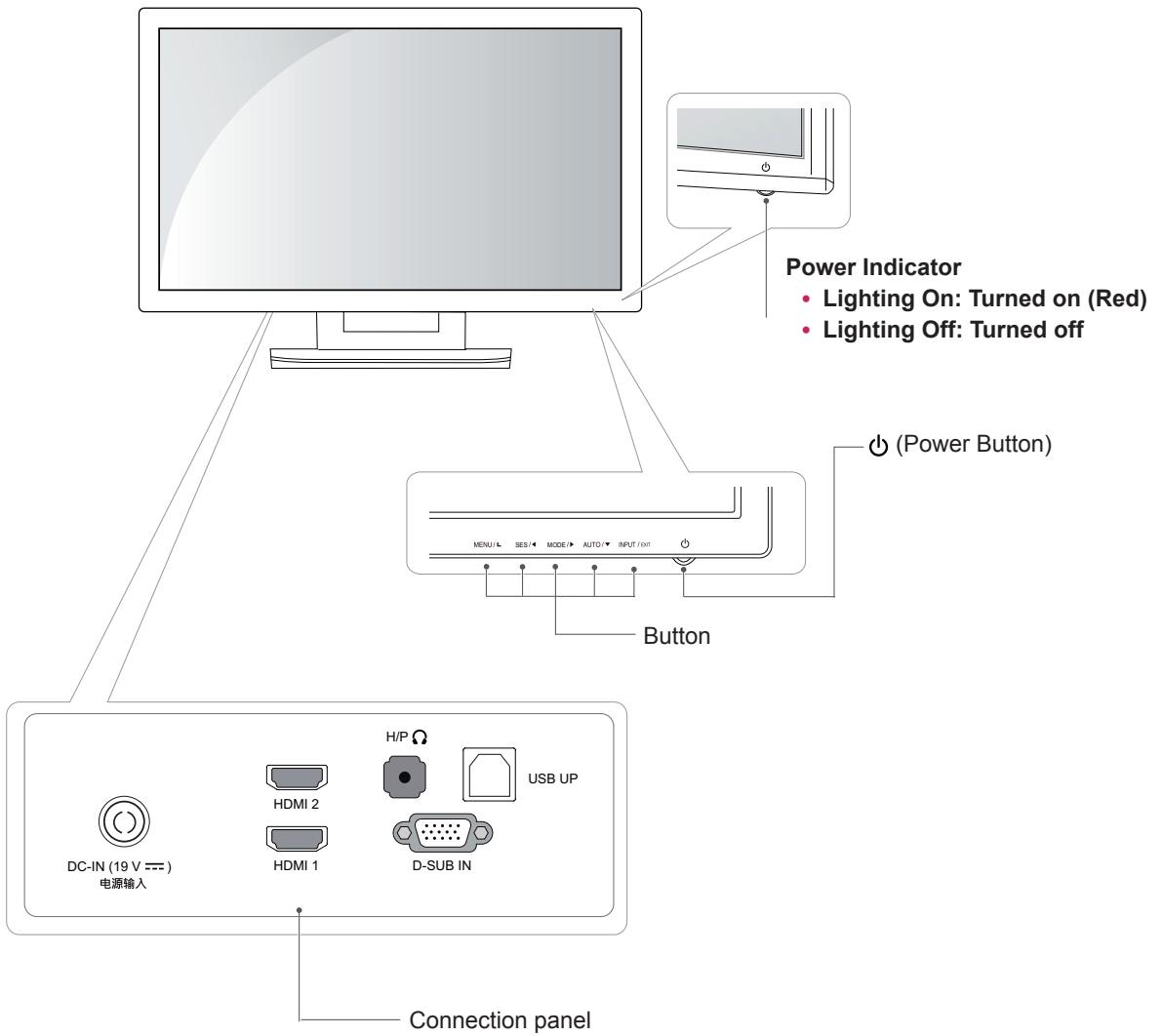
- Do not use any unapproved accessories to ensure the safety and product life span.
- Any damages or injuries by using unapproved accessories are not covered by the warranty.



NOTE

- The accessories supplied with your product may vary depending on the model.
- Product specifications or contents in this manual may be changed without prior notice due to upgrade of product functions.

Parts and buttons



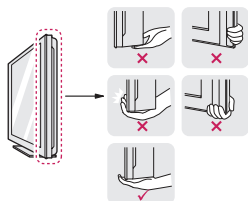
Moving and Lifting the Monitor

When moving or lifting the monitor, follow these instructions to prevent the monitor from being scratched or damaged and to ensure safe transportation regardless of its shape or size.



CAUTION

- As much as possible, avoid touching the monitor screen. This may result in damage to the screen or some of the pixels used to create images.
- It is advisable to place the monitor in the original box or packing material before attempting to move it.
- Before moving or lifting the monitor, disconnect the power cord and all cables.
- Hold the top and bottom of the monitor frame firmly. Do not hold the panel itself.



- When holding the monitor, the screen should face away from you to prevent it being scratched.



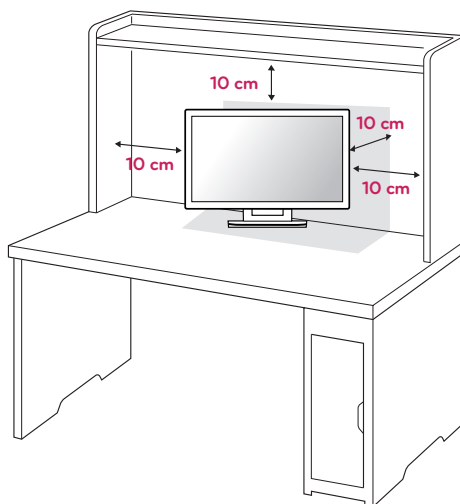
- When moving the monitor, avoid any strong shock or vibrations to the product.
- When moving the monitor, keep it upright, never turn the monitor on its side or tilt it sideways.

Setting up the Monitor

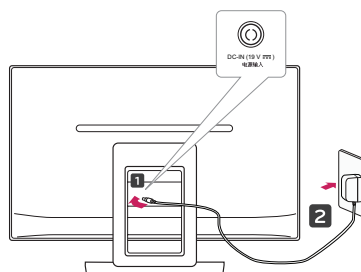
Mounting on a table

- 1 Lift and tilt the Monitor set into its upright position on a table.

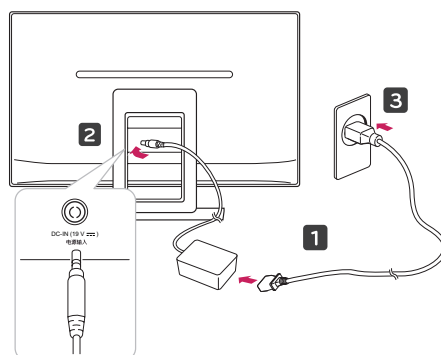
Leave a 10 cm (minimum) space from the wall for proper ventilation.




- 2 Connect the AC-DC Adapter and Power Cord to a wall outlet.



or



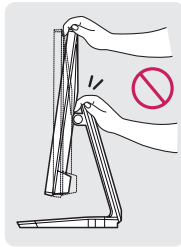
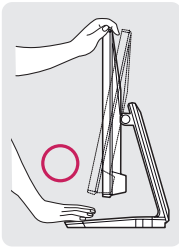
- 3 Press the  (Power) button on the front panel to turn the power on.

**CAUTION**

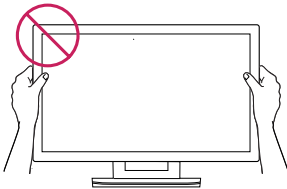
Unplug the power cord before moving the Monitor to another location. Otherwise electric shock may occur.

**WARNING**

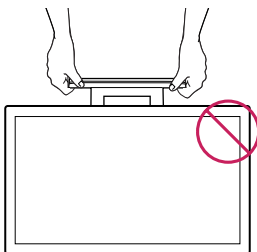
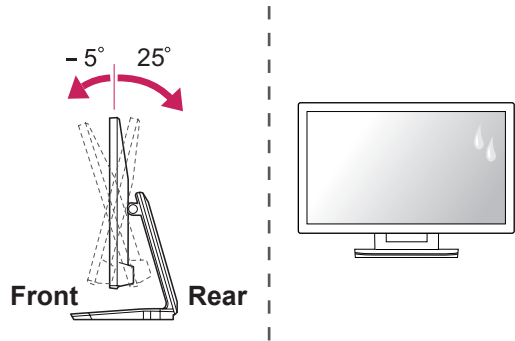
To avoid injury to the fingers when adjusting the screen, do not hold the upper part of the stand as shown below.



Do not touch or press the screen when adjusting the angle of the monitor.



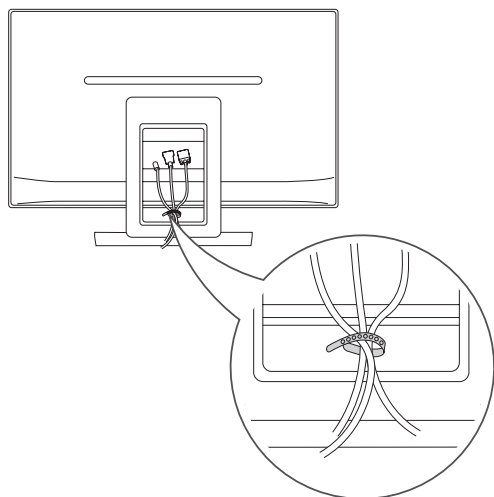
Do not hold this set like below picture. Monitor screen can detach from stand base and injure your body.

**NOTE**

- Tilt from +25 to -5 degrees up or down to adjust the angle of the Monitor set to suit your view.
- Avoid using the product in a high temperature and high humidity area. Moving the monitor from a environment like this to an air conditioned area may cause moisture formation inside the glass. This moisture will be dissipate over time, which may vary depending on the operating environment.

Tidying cables

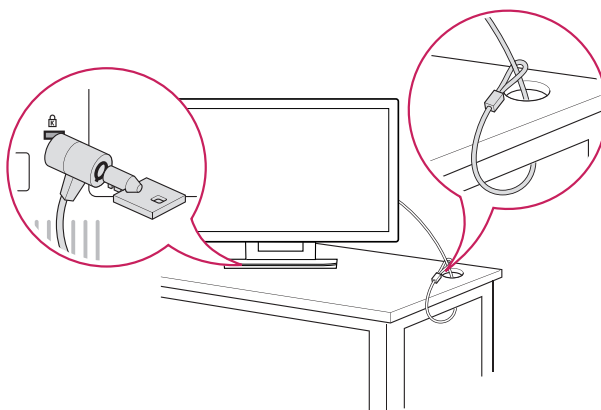
Gather and bind the cables with the supplied cable tie.



Using the Kensington security system

The Kensington security system connector is located at the back of the Monitor set. For more information of installation and using, refer to the manual supplied with the Kensington security system or visit <http://www.kensington.com>.

Connect the Kensington security system cable between the Monitor set and a table.



! NOTE

The Kensington security system is optional.
You can obtain it from most electronics stores.

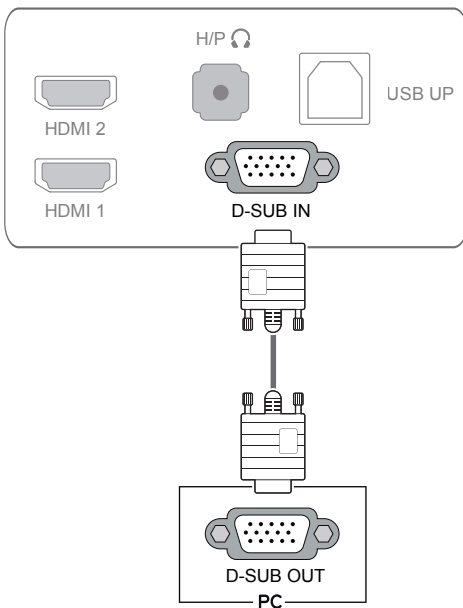
USING THE MONITOR

Connecting to a PC

Your Monitor supports Plug & Play. When connected to a PC and turned on, the device will connect automatically without configuration or user intervention.

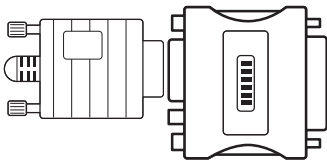
D-SUB connection

Transmits analog video from your PC to the Monitor set. Connect the PC and the Monitor with the supplied D-sub 15 pin signal cable as shown in the following illustrations.



! NOTE

- When using a D-Sub signal input cable connector for Macintosh

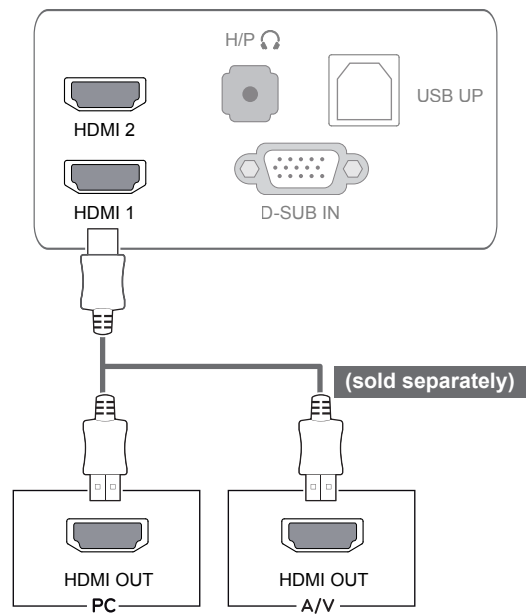


• Mac adapter

For Apple Macintosh use, a separate plug adapter is needed to change the 15 pin high density (3 row) D-SUB VGA connector on the supplied cable to a 15 pin 2 row connector.

HDMI connection

Transmits the digital video and audio signals from your PC or A/V to the Monitor. Connect the PC or A/V and the Monitor with the HDMI cable as shown in the following illustrations.

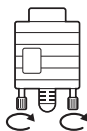


! NOTE

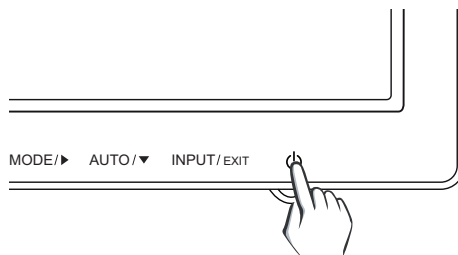
- This monitor support PC input via HDMI, but you may experience some compatibility issues.

**CAUTION**

- Connect the signal input cable and tighten it by turning the screws clockwise.
- Do not press the screen with your finger for a long time as this may result in temporary distortion on the screen.
- Avoid displaying a fixed image on the screen for a long period of time to prevent image burn. Use a screensaver if possible.

**Self Image Setting Function**

Press the power button to turn on the monitor. When monitor power is turned on, the **"Self Image Setting"** Function is executed automatically. (Only supported in Analog Mode)

**NOTE**

- When connecting the power cord to the outlet, use a grounded (3-hole) multi-socket or a grounded power outlet.
- The monitor may flicker when turned on in an area of low temperature. This is normal.
- Sometimes red, green, or blue spots may appear on the screen. This is normal.
- Using a DVI to HDMI cable may cause compatibility issues.

**NOTE**

- **"Self Image Setting" Function.**

This function provides the user with optimal display settings. When the user connects the monitor for the first time, this function automatically adjusts the display to optimal settings for individual input signals. (Only supported in Analog Mode)

- **'AUTO' Function.**

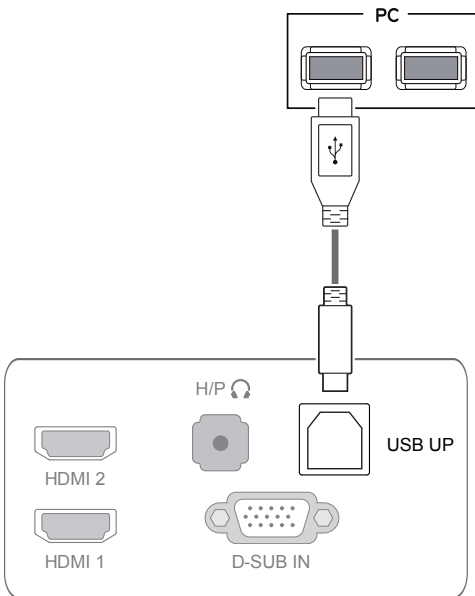
When you encounter problems such as blurry screen, blurred letters, screen flicker or tilted screen while using the device or after changing screen resolution, press the AUTO function button to improve resolution. (Only supported in Analog Mode)

USB cable-PC connection

To use the touch screen, connect the USB port to the PC.

Use a USB 2.0 cable with A-B type to connect your PC.

(The USB port on the monitor is only for the touch screen feature.)

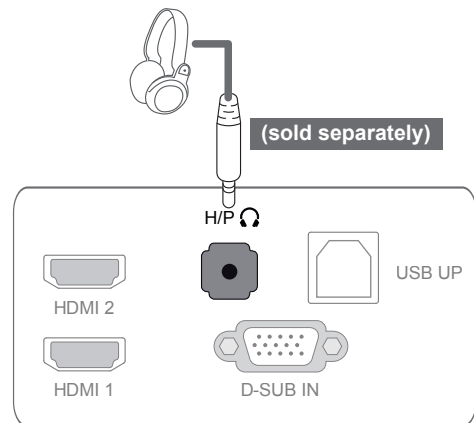


! NOTE

- Please install the latest Windows service pack before use.

Headphone port connection

Use the headphone port to connect a peripheral device to the monitor. Connect as illustrated.

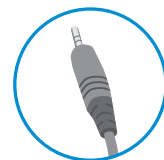


! NOTE

- Peripheral devices are sold separately.
- The USB port cannot be used to connect a keyboard, mouse, and other USB devices.
- For an angle plug earphone, it is difficult to connect it with a peripheral device, so use a straight type.



Angle Type



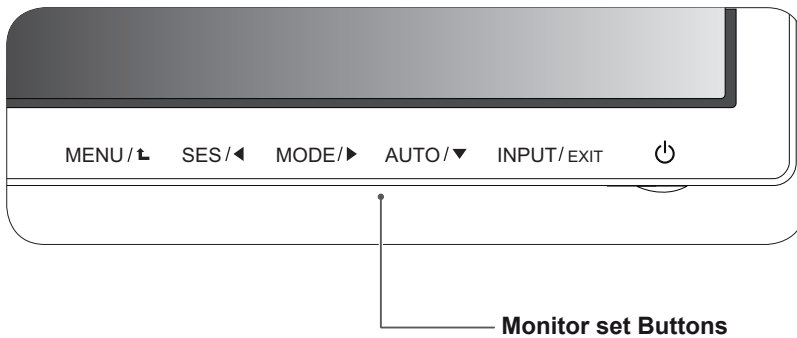
Straight Type

! NOTE

- Depending on the audio settings of the PC and external device, headphone and speaker functions may be limited.

CUSTOMIZING SETTINGS

- 1 Press the desired button on the bottom of the Monitor.
- 2 Change the value of the menu item by pressing the buttons on the bottom of the Monitor.
To return to the upper menu or set other menu items, use the up arrow (⬆) button.
- 3 Select **EXIT** to leave the OSD menu.



Button	Description	
MENU ⬆	Accesses the main menus.	
	OSD LOCKED/ UNLOCKED	<p>This function allows you to lock the current control settings, so that they cannot be inadvertently changed.</p> <ul style="list-style-type: none"> • Press and hold the Menu button for a few seconds. Then, you will be prompted to set the OSD Lock. • You can unlock the OSD controls at any time by pushing the MENU button for several seconds. The message "OSD UNLOCKED" should appear.
SES / ⬅	Enables the SUPER ENERGY SAVING function.	
MODE / ➡	Goes to the Picture Mode menu.	
AUTO ▼	When adjusting your display settings, always press the AUTO button. (Only supported in Analog Mode)	
	The best display mode	1920 x 1080
INPUT / EXIT	<p>You can choose the input signal.</p> <ul style="list-style-type: none"> • When two input signals are connected, you can select the input signal (D-SUB/ HDMI1/HDMI2) you want. • When only one signal is connected, it is automatically detected. The default setting is D-SUB. 	
	EXIT	
	Exit the OSD (On Screen Display).	
⏻ (Power Button)	Turns the power on or off.	
	Power Indicator	<p>When the monitor is in operating mode, the power indicator will turn red (on mode).</p> <p>When the monitor is in power-saving mode, the power indicator will blink red.</p>



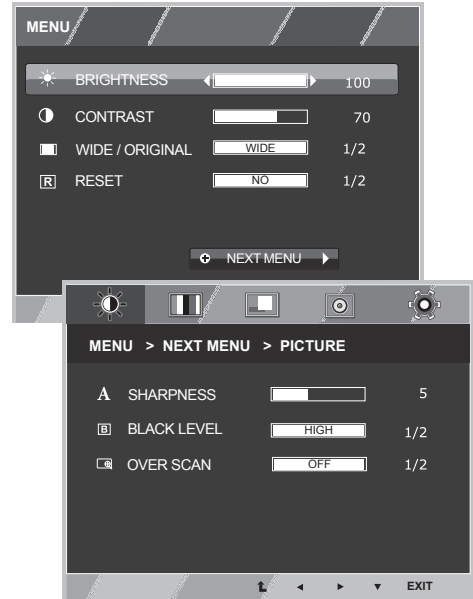
NOTE

All of the buttons are touch sensitive and can be operated by simply touching their label with your finger.

Customizing Settings

Menu Settings

- 1 Press **MENU** button on the bottom of the Monitor to display the **MENU** OSD.
- 2 Set the options by pressing the ◀ or ▶ or ▼ buttons.
- 3 Select the "**NEXT MENU**" button to enter the more option settings.
- 4 Select **EXIT** to leave the OSD menu.
To return to the upper menu or set other menu items, use the up arrow (⬆) button.



Each option is explained below.

MENU	Analog	HDMI	Description
BRIGHTNESS	<input type="radio"/>	<input type="radio"/>	To adjust the brightness, contrast of the screen
CONTRAST	<input type="radio"/>	<input type="radio"/>	
WIDE/ORIGINAL	<input type="radio"/>	<input type="radio"/>	WIDE
			Switch to full screen mode according to input image signal.
			ORIGINAL
			Change the input image signal ratio to original. * This function works only if input resolution is lower than Monitor set ratio (16:9).
RESET	<input type="radio"/>	<input type="radio"/>	Restore all factory default settings. Press the ◀ , ▶ buttons to reset immediately.

MENU > NEXT MENU		Analog	HDMI	Description
PICTURE	SHARPNESS	<input type="radio"/>	<input type="radio"/>	To adjust the clearness of the screen .
	BLACK LEVEL	x	<input type="radio"/>	To set offset level
	OVER SCAN	x	<input type="radio"/>	To improve the clarity and stability of the screen
COLOR	GAMMA	<input type="radio"/>	<input type="radio"/>	To customize the color of the screen
	COLOR TEMP			
	SIX COLOR			
	COLOR RESET			
DISPLAY	HORIZONTAL	<input type="radio"/>	x	To adjust the position of the screen
	VERTICAL			
	CLOCK	<input type="radio"/>	x	To improve the clarity and stability of the screen
	PHASE			
VOLUME		x	<input type="radio"/>	To adjust the volume
OTHERS	LANGUAGE	<input type="radio"/>	<input type="radio"/>	To customize the screen status for a user's operating environment
	POWER INDICATOR			
	RESPONSE TIME	<input type="radio"/>	<input type="radio"/>	Sets the response time for the picture.

- **HDMI:** HDMI(Digital signal) input.

PICTURE

- 1 Press **MENU** button on the bottom of the Monitor set to display the **MENU** OSD.
- 2 Select the "**NEXT MENU**" button to enter the more option settings.
- 3 Select **PICTURE** by pressing the ► button.
- 4 Enter to **PICTURE** by pressing the ▼ button.
- 5 Set the options by pressing the ◀ or ▶ or ▼ buttons.
- 6 Select **EXIT** to leave the OSD menu.
To return to the upper menu or set other menu items, use the up arrow (⬆) button.

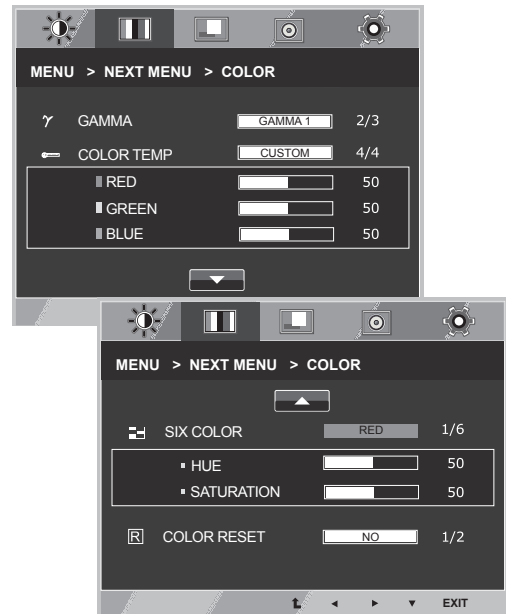


Each option is explained below.

MENU > NEXT MENU > PICTURE	Description	
SHARPNESS	Enhances the edges of the images in the video.	
BLACK LEVEL	This sets the black level offset. (only for HDMI input) * Offset?As the criteria for video signal, it is the darkest screen the monitor can show.	
	HIGH	The screen will be bright.
	LOW	The screen will be dark.
OVER SCAN	When using A/V equipment, the edges of the video may contain noise. This feature removes the edges of the video signal. Only supported on HDMI inputs.	

COLOR

- 1 Press the **MENU** button on the bottom of the Monitor set to display the **MENU** OSD.
- 2 Select the "**NEXT MENU**" button to open more option settings.
- 3 Select **COLOR** by pressing the ► button.
- 4 Open **COLOR** by pressing the ▼ button.
- 5 Set the options by pressing the ◀ or ▶ or ▼ buttons.
- 6 Select **EXIT** to leave the OSD menu.
To return to the upper menu or set other menu items, use the up arrow (⬆) button.

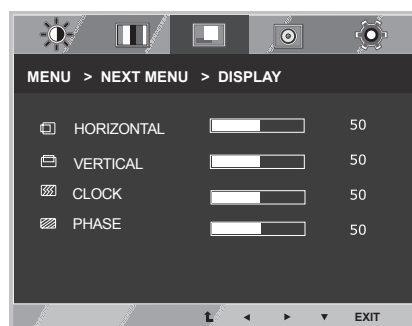


Each option is explained below.

MENU > NEXT MENU > COLOR	Description	
GAMMA	Set your own gamma value. : GAMMA 0, GAMMA 1, GAMMA 2 on the monitor, high gamma values display whitish images and low gamma values display blackish images.	
COLOR TEMP	CUSTOM	
	<ul style="list-style-type: none"> • RED:Set your own red color levels. • GREEN: Set your own green color levels. • BLUE:Set your own blue color levels. 	
	Select the screen color. WARM : Set the screen to warm color temperature (more red). MEDIUM : Set the screen to medium color temperature. COOL : Set the screen to cool color temperature (more blue).	
SIX COLOR	Sets and stores the hue and saturation for six colors(RED/ GREEN/BLUE/ CYAN/MAGENTA/YELLOW) to satisfy the color requirements of a user.	
	HUE	Adjusts the screen hue.
	SATURATION	Adjusts the color sharpness on the screen. Lower values make the color sharpness weaker and colors lighter while higher values make the color sharpness stronger and colors dark.
COLOR RESET	Resets the color settings to the factory default settings for the current input device.	

DISPLAY

- 1 Press **MENU** button on the bottom of the Monitor set to display the **MENU OSD**.
- 2 Select the "**NEXT MENU**" button to enter the more option settings.
- 3 Select **DISPLAY** by pressing the ► button.
- 4 Open **DISPLAY** by pressing the ▼ button.
- 5 Set the options by pressing the ◀ or ▶ or ▼ buttons.
- 6 Select **EXIT** to leave the OSD menu.
To return to the upper menu or set other menu items, use the up arrow (⬆) button.

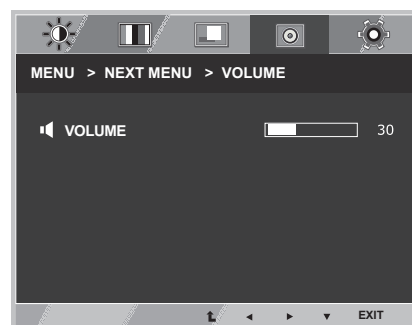


Each option is explained below.

MENU > NEXT MENU > DISPLAY	Description
HORIZONTAL	To move the screen left and right.
VERTICAL	To move the screen up and down.
CLOCK	To minimize any vertical bars or stripes visible on the screen background. The horizontal screen size will also change.
PHASE	To adjust the focus of the display. This item allows you to remove any horizontal noise and clear or sharpen the image of characters.

VOLUME

- 1 Press **MENU** button on the bottom of the Monitor set to display the **MENU OSD**.
- 2 Select the "**NEXT MENU**" button to enter the more option settings.
- 3 Select **VOLUME** by pressing the ► button.
- 4 Enter to **VOLUME** by pressing the ▼ button.
- 5 Set the options by pressing the ◀ or ▶ buttons.
- 6 Select **EXIT** to leave the OSD menu.
To return to the upper menu or set other menu items, use the up arrow (⬆) button.

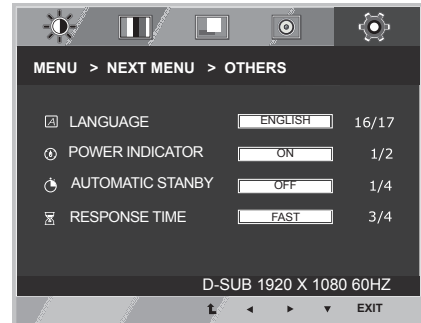


Each option is explained below.

MENU > NEXT MENU > VOLUME	Description
VOLUME	To adjust the volume of headphone/earphone. (Only for HDMI input)

OTHERS

- 1 Press **MENU** button on the bottom of the Monitor to display the **MENU** OSD.
- 2 Select the "**NEXT MENU**" button to enter the more option settings.
- 3 Select **OTHERS** by pressing the ► button.
- 4 Enter to **OTHERS** by pressing the ▼ button.
- 5 Set the options by pressing the ◀ or ▶ or ▼ buttons.
- 6 Select **EXIT** to leave the OSD menu.
To return to the upper menu or set other menu items, use the up arrow (⬆) button.

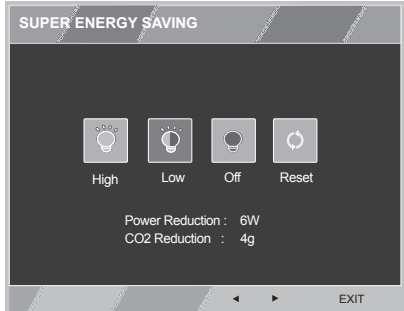


Each option is explained below.

MENU > NEXT MENU > OTHERS	Description	
LANGUAGE	Chooses the language of the OSD.	
POWER INDICATOR	ON	The power indicator is automatically turned on.
	Off	The power indicator is turned off.
AUTOMATIC STANBY	Once the specified standby time passes, the monitor turns off automatically. Pressing any button or changing the resolution will initialize the standby time.	
	Off	The automatic standby function is turned off.
	4H	The monitor is automatically turned off after 4 hours.
	6H	The monitor is automatically turned off after 6 hours.
RESPONSE TIME	8H	The monitor is automatically turned off after 8 hours.
	You can set a response time for displayed pictures based on the speed of the screen. For a normal environment, it is recommended that you use 'NORMAL'. For a fast-moving picture, it is recommended that you use 'FAST'. Setting to High may cause image sticking.	
	Off	The response time is turned off.
	High	Sets the response time to High.
	Middle	Sets the response time to Middle.
	Low	Sets the response time to Low.

SUPER ENERGY SAVING

- 1 Press **SES** button on the bottom of the Monitor to display the **SUPER ENERGY SAVING** OSD.
- 2 Set the options by pressing the ◀ or ▶ buttons.
- 3 Select **EXIT** to leave the OSD menu.



Each option is explained below.

SUPER ENERGY SAVING	Description
High	Enables SUPER ENERGY SAVING you can save energy with this energy- high efficient function.
Low	Enables SUPER ENERGY SAVING you can save energy with this energy- low efficient function.
Off	Disables SUPER ENERGY SAVING.
Reset	Resets the values of total energy consumption reduction and CO2 emission reduction estimates.

NOTE

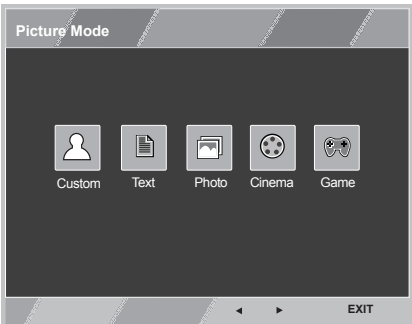
- **TOTAL POWER REDUCTION:** How much power is saved while using the monitor.
- **TOTAL CO2 REDUCTION:** Change the TOTAL POWER REDUCTION to CO2.
- **SAVING DATA(W/h)**

	584 mm (23 inch)
SUPER SAVING (High)	6 W/h
SUPER SAVING (Low)	3 W/h

- Saving Data depends on the Panel. Values will be different from each panel and panel vendor.
- LG calculated these values by using a “**broadcast video signal**” (including broadcast video: IEC 62087)
- SUPER SAVING refers to how much power can be saved using the SUPER ENERGY SAVING function.

Picture Mode

- 1 Press **MODE** button on the bottom of the Monitor set to display the **Picture Mode** OSD.
- 2 Set the options by pressing the ◀ or ▶ buttons.
- 3 Select **EXIT** to leave the OSD menu.



ENGLISH

Each option is explained below.

Picture Mode	Description
PC Mode	
Custom	Allows the user to adjust each element. The color mode of the main menu can be adjusted.
Text	Optimizes the screen for document processing.
Photo	Optimizes the screen to view photos.
Cinema	Optimizes the screen to improve the visual effects of a video.
Game	Optimizes the screen for gameplay.
AV Mode (Only for HDMI input)	
Custom	Allows the user to adjust each element. The color mode of the main menu can be adjusted.
VIVID 1	Optimizes the screen for vivid visual effects.
VIVID 2	Optimizes the screen for more vivid visual effects.
Standard	Optimizes the screen to display normal picture quality.
Cinema	Optimizes the screen to improve the visual effects of a video.

TROUBLESHOOTING

Nothing is displayed on the screen.	
Is the monitor's power cord plugged in?	<ul style="list-style-type: none"> Check if the power cord is correctly plugged in to the power outlet.
Is the power indicator on?	<ul style="list-style-type: none"> Check the power cable connection and press the power button.
Is the power indicator displaying red?	<ul style="list-style-type: none"> Check that the connected input is enabled (Menu - Input).
Is the power indicator blinking?	<ul style="list-style-type: none"> If the monitor is in power-saving mode, move the mouse or press any key on the keyboard to switch the display on. Check if the computer is turned on.
Is the "OUT OF RANGE" message displayed?	<ul style="list-style-type: none"> This occurs when signals transferred from the PC (video card) are out of the horizontal or vertical frequency range of the monitor. Please see the "Product Specification" section of this manual to set the appropriate frequency.
Is the "CHECK SIGNAL CONNECTION" message is displayed?	<ul style="list-style-type: none"> This is displayed when the signal cable between the PC and the monitor is missing or disconnected. Check the cable and reconnect.

Do you see a "OSD LOCKED" message on the screen?	
Do you see "OSD LOCKED" when you push MENU button?	<ul style="list-style-type: none"> You can secure the current control settings, so that they cannot be inadvertently changed. You can unlock the OSD controls at any time by pushing the MENU button for several seconds: the message "OSD UNLOCKED" will appear.

The screen retains an image.	
Does image sticking occur even when the monitor is turned off?	<ul style="list-style-type: none"> Displaying a still image for a prolonged time may cause damage to the screen, resulting in the retention of the image. Use a screen saver to protect the screen when using the monitor for a prolonged period of time.



NOTE

- Vertical Frequency:** In order to display an image, the screen must be refreshed dozens of times per second like a fluorescent lamp.
 The number of times the screen is refreshed per second is called vertical frequency or refresh rate and is represented by Hz.
- Horizontal Frequency:** The time it takes to display one horizontal line is called the horizontal cycle. The number of horizontal lines displayed in one second can be calculated by dividing one by the horizontal cycle. This is called horizontal frequency and is represented by kHz.

The image on the screen looks strange. (It works only in analog mode.)	
Does the screen area appear un-centered?	Pressing the AUTO button will automatically optimize the screen to the current display mode.
Do you see vertical lines on the screen?	Pressing the AUTO button will automatically optimize the screen to the current display mode.
Do you see horizontal noise lines or does text appear blurred on the screen?	Pressing the AUTO button will automatically optimize the screen to the current display mode.

Touch does not work normally.	
Touch does not work at all.	<ul style="list-style-type: none"> Check whether the USB cable is properly connected to the PC. (No additional USB touch program installation is required.) Check your operating system. The touch function is supported only on Windows 7 and Windows 8.
Multi touch does not work.	<ul style="list-style-type: none"> Windows 7 Starter, Home basic version are not support multi-touch as default option. Please check the details on the homepage of the Microsoft.

**CAUTION**

- Check **Control Panel ► Display ► Settings** and see if the frequency or the resolution were changed. If yes, readjust the video card to the recommend resolution.
- If the recommended resolution (optimal resolution) is not selected, letters may be blurred and the screen may be dimmed, truncated or biased. Make sure to select the recommend resolution.
- Settings can differ between computer and O/S (Operation System), and resolution mentioned above may not be supported by every video card. For graphics card related issues or to obtain the newest driver, refer to the maker of your graphics card.

The display color is abnormal.

Does the display appear discolored (16 color)?	<ul style="list-style-type: none"> • Set the color to 24 bit (true color) or higher. In Windows, go to Control Panel > Display > Settings > Color Quality.
Does the display color appear unstable or in monochrome?	<ul style="list-style-type: none"> • Check if the signal cable is connected properly. Reconnect the cable or reinsert the PC's video card.
Are there spots on the screen?	<ul style="list-style-type: none"> • When using the monitor, pixilated spots (red, green, blue, white or black) may appear on the screen. This is normal for the LCD screen. It is not an error nor is it related to the monitor's performance.

Do you see an "Unrecognized monitor, Plug&Play (VESA DDC) monitor found" message?

Have you installed the display driver?	<ul style="list-style-type: none"> • Be sure to install the display driver from the display driver CD (or diskette) that comes with your display. Or, you can also download the driver from our web site: http://www.lg.com. • Make sure to check if the video card supports Plug&Play function.
--	--

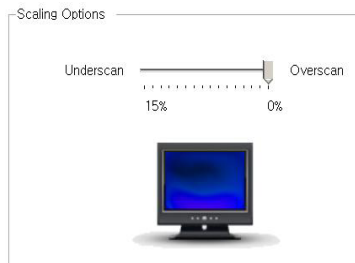
The screen is flickering.

Did you select the recommended resolution?	<ul style="list-style-type: none"> • If the selected resolution is HDMI 1080i 60/50 Hz, the screen may be flickering. Change the resolution to the recommended resolution 1080P.
--	---

HDMI

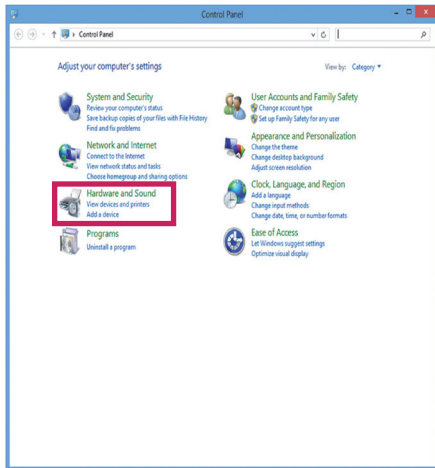
The picture cannot be displayed in full screen in HDMI mode.

- Did you change the Scaling Options for your video card?
- The HDMI Scaling Options of the AMD/ATI video card is set to Underscan by default so the picture cannot be displayed in full screen. Run Catalyst Control Center and set the Scaling Options to 0% Overscan.

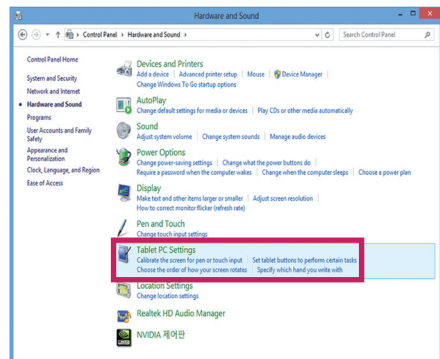


Touch does not respond when the desktop is extended to a second touch monitor.

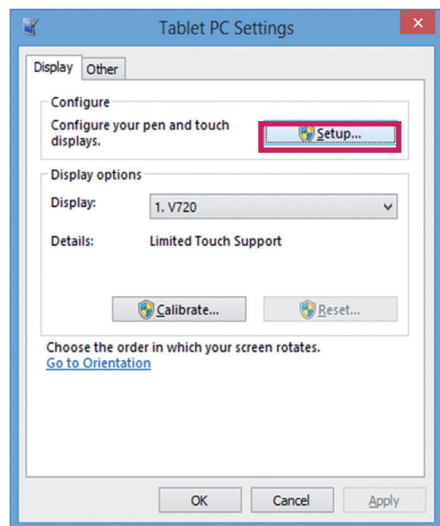
In Windows 7 and Windows 8, you can configure the second monitor as the touch screen as shown below.
(Control Panel -> Hardware and Sound -> Tablet PC Settings -> Setup -> Setup and click the screen of the second touch monitor)



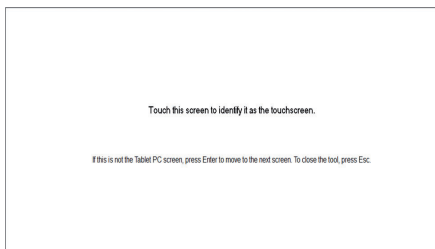
<Control Panel -> Hardware and Sound>



<Tablet PC Settings>



<Setup>



<Setup and click the screen of the second touch monitor>

SPECIFICATIONS

LCD Screen	Type	58.42 cm TFT (Thin Film Transistor) LCD (Liquid Crystal Display) Screen Diagonal length of the screen: 58.42 cm
	Pixel Pitch	0.2652 mm x 0.2652 mm
Resolution	Maximum Resolution	D-Sub (Analog) : 1920 x 1080 @ 60 Hz HDMI : 1920 x 1080 @ 60 Hz
	Recommended Resolution	1920 x 1080 @ 60 Hz
Video Signal	Horizontal Frequency	30 kHz to 83 kHz
	Vertical Frequency	56 Hz to 75 Hz (D-Sub) 56 Hz to 61 Hz (HDMI)
	Synchronization	Separate Sync. / HDMI
Input Connector	15 pin D-SUB Connector / HDMI Connector	
Power	Voltage	19 V --- 1.3 A
	Power consumption (Typ.)	On mode: 25 W (Typ.) Power Saving Mode ≤ 0.3 W Off Mode ≤ 0.3 W
AC/DC adaptor	Type LCAP21 (24W Desk-top), manufactured by Lien Chang Electronic or Type LCAP26-E (24W Wall-mount KR/EU (except UK)), manufactured by Lien Chang Electronic	
	Output: 19 V --- 1.3 A	
Dimension/ Weight	Monitor Size (Width x Height x Depth)	
	554.8 mm x 399.1 mm x 207.8 mm	
	Weight (Without Packag- ing)	6.4 kg
Stand Angle Adjustment	Forwards/Backwards: -5° to 25° (Head)	
Environmental Conditions	Operating Condition	Temperature: 10°C to 35°C; Humidity: 10% to 80%
	Storing Condition	Temperature: -20°C to 60°C; Humidity: 5% to 90%

The specifications are subject to change without notice.

Preset Modes (Resolution)

Display Modes (Resolution)	Horizontal Frequency(kHz)	Vertical Frequency(Hz)	Polarity(H/V)	
720 x 400	31.468	70	-/+	
640 x 480	31.469	60	-/-	
640 x 480	37.500	75	-/-	
800 x 600	37.879	60	+/+	
800 x 600	46.875	75	+/+	
1024 x 768	48.363	60	-/-	
1024 x 768	60.023	75	+/+	
1152 x 864	67.500	75	+/+	
1280 x 1024	63.981	60	+/+	
1280 x 1024	79.976	75	+/+	
1680 x 1050	65.290	60	-/+	
1920 x 1080	67.500	60	+/+	Recommend Mode

HDMI TIMING

Display Modes (Resolution)	Horizontal Frequency(kHz)	Vertical Frequency(Hz)	HDMI
480P	31.50	60	O
576P	31.25	50	O
720P	37.50	50	O
720P	45.00	60	O
1080i	28.12	50	O
1080i	33.75	60	O
1080P	56.25	50	O
1080P	67.50	60	O (Recommend Mode)

Indicator

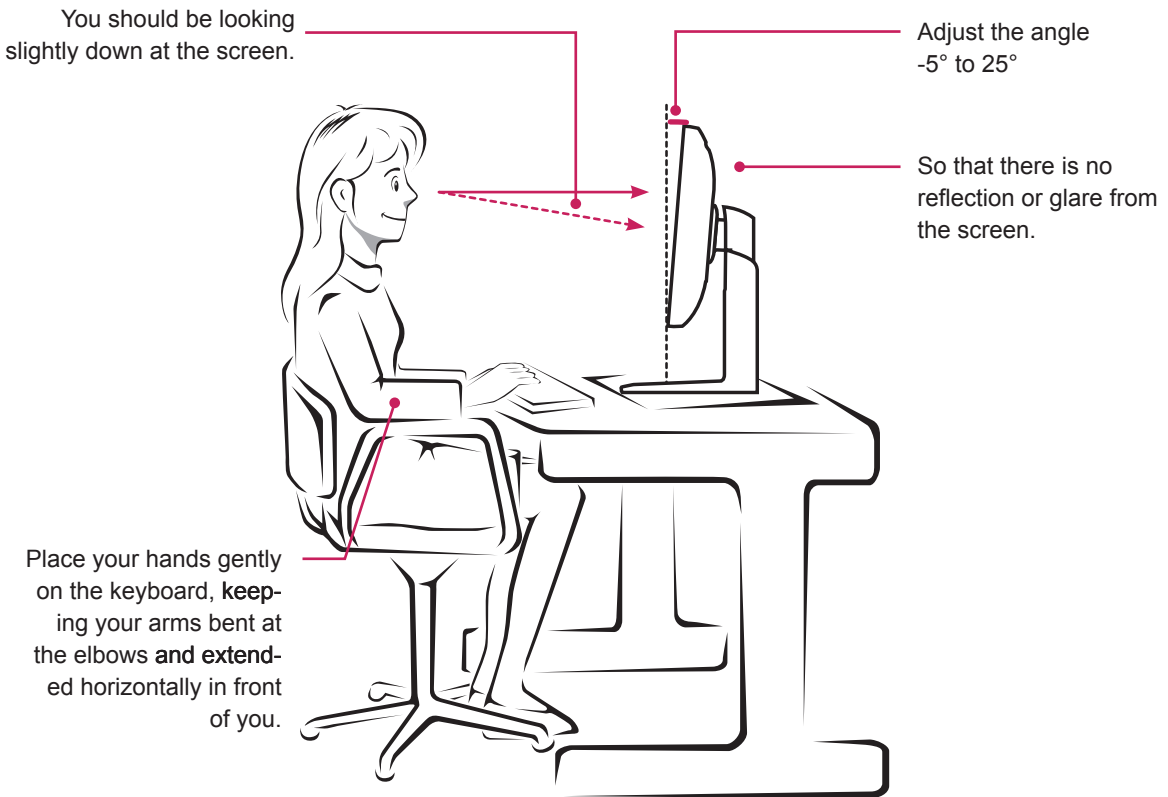
Mode	LED Color
On Mode	Red
Sleep Mode	Blinking Red
Off Mode	Off

PROPER POSTURE

Proper Posture for Using the Monitor

Adjust the screen so that you can comfortably view at a slight downward angle from your natural eye level.

- Take a break for approximately ten minutes every hour to reduce any fatigue caused by long-time usage.
- The stand of the touch monitor allows the product to be used in the optimum position. Adjust the stand angle from -5° to 25° to obtain the best view of the screen.





Make sure to read the Safety Precautions before using the product.

Keep the Owner's Manual (CD) in an accessible place for future reference.

The model and serial number of the SET is located on the back and one side of the SET. Record it below should you ever need service.

MODEL _____

SERIAL _____

ENERGY STAR is a set of power-saving guidelines issued by the U.S. Environmental Protection Agency (EPA).



As an ENERGY STAR Partner LGE U. S. A., Inc. has determined that this product meets the ENERGY STAR guidelines for energy efficiency.