



OWNER'S MANUAL

LED TV*

* LG LED TV applies LCD screen with LED backlights.

Please read this manual carefully before operating your set and retain it for future reference.

MT35*
MT55*
MT75*

TABLE OF CONTENTS

3 LICENSES

3 OPEN SOURCE SOFTWARE NOTICE

4 ASSEMBLING AND PREPARING

- 4 Unpacking
- 7 Separate purchase
- 8 Parts and buttons
- 10 Lifting and moving the TV
- 11 Setting up the TV
 - Attaching the Stand
- 14 Mounting on a table
- 15 Mounting on a wall
- 17 Tidying cables

17 MAKING CONNECTIONS

- 18 Antenna Connection
- 18 Satellite dish Connection
- 18 Euro Scart Connection
- 19 Other Connections

21 REMOTE CONTROL

22 USING THE USER GUIDE

23 MAINTENANCE

- 23 Cleaning Your TV
 - Screen, frame, cabinet and stand
 - Power cord
- 23 Preventing "Image burn" or "Burn-in" on your TV screen

24 TROUBLESHOOTING

25 SPECIFICATIONS



WARNING

- If you ignore the warning message, you may be seriously injured or there is a possibility of accident or death.



CAUTION

- If you ignore the caution message, you may be slightly injured or the product may be damaged.



NOTE

- The note helps you understand and use the product safely. Please read the note carefully before using the product.

LICENSES

Supported licenses may differ by model. For more information of the licenses, visit www.lge.com.



Manufactured under license from Dolby Laboratories. "Dolby" and the double-D symbol are trademarks of Dolby Laboratories.



The terms HDMI and HDMI High-Definition Multimedia Interface, and the HDMI logo are trademarks or registered trademarks of HDMI Licensing LLC in the United States and other countries.



ABOUT DIVX VIDEO: DivX® is a digital video format created by DivX, LLC, a subsidiary of Rovi Corporation. This is an official DivX Certified® device that has passed rigorous testing to verify that it plays DivX video. Visit divx.com for more information and software tools to convert your files into DivX videos.

ABOUT DIVX VIDEO-ON-DEMAND: This DivX Certified® device must be registered in order to play purchased DivX Video-on-Demand (VOD) movies. To obtain your registration code, locate the DivX VOD section in your device setup menu. Go to vod.
divx.com for more information on how to complete your registration.

"DivX Certified® to play DivX® video up to HD 1080p, including premium content."

"DivX®, DivX Certified® and associated logos are trademarks of Rovi Corporation or its subsidiaries and are used under license."

"Covered by one or more of the following U.S. patents :
7,295,673; 7,460,668; 7,515,710; 7,519,274"



For DTS patents, see <http://patents.dts.com>. Manufactured under license from DTS Licensing Limited. DTS, the Symbol, & DTS and the Symbol together are registered trademarks, and DTS 2.0 Channel is a trademark of DTS, Inc. © DTS, Inc. All Rights Reserved.

OPEN SOURCE SOFTWARE NOTICE

To obtain the source code under GPL, LGPL, MPL and other open source licenses, that is contained in this product, please visit <http://opensource.lge.com>.

In addition to the source code, all referred license terms, warranty disclaimers and copyright notices are available for download.

LG Electronics will also provide open source code to you on CD-ROM for a charge covering the cost of performing such distribution (such as the cost of media, shipping and handling) upon email request to opensource@lge.com.

This offer is valid for three (3) years from the date on which you purchased the product.

**NOTE**

- Image shown may differ from your TV.
- Your TV's OSD (On Screen Display) may differ slightly from that shown in this manual.
- The available menus and options may differ from the input source or product model that you are using.
- New features may be added to this TV in the future.
- The TV can be placed in standby mode in order to reduce the power consumption. And the TV should be turned off if it will not be watched for some time, as this will reduce energy consumption.
- The energy consumed during use can be significantly reduced if the level of brightness of the picture is reduced, and this will reduce the overall running cost.

ASSEMBLING AND PREPARING

Unpacking

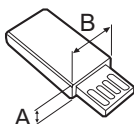
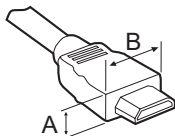
Check your product box for the following items. If there are any missing accessories, contact the local dealer where you purchased your product. The illustrations in this manual may differ from the actual product and item.

**CAUTION**

- Do not use any pirated items to ensure the safety and product life span.
- Any damages or injuries by using pirated items are not covered by the warranty.
- Some models have a thin film attached on to the screen and this must not be removed.

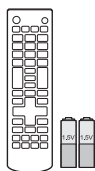
**NOTE**

- The items supplied with your product may vary depending on the model.
- Product specifications or contents of this manual may be changed without prior notice due to upgrade of product functions.
- For an optimal connection, HDMI cables and USB devices should have bezels less than 10 mm thick and 18 mm width. Use an extension cable that supports USB 2.0 if the USB cable or USB memory stick does not fit into your TV's USB port.



*A  10 mm

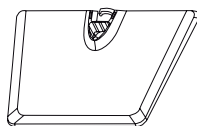
*B  18 mm



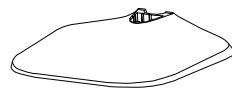
**Remote control,
Batteries (AAA)**
(See p.21)



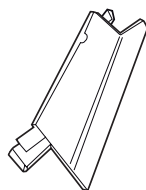
**CD (Owner's Manual),
Cards**



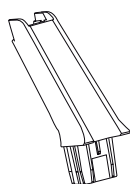
Stand Base
(Only MT35*)
(See p.11)



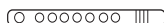
Stand Base
(Only MT55*, MT75*)
(See p.12)



Stand Body
(Only MT35*)
(See p.11)



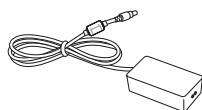
Stand Body
(Only MT55*, MT75*)
(See p.12)



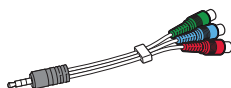
Cable Tie
(See p.17)



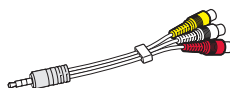
Power Cord
(See p.14)



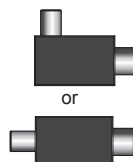
AC-DC Adapter
(See p.14)



**Component gender
cable**
(See p.19, 20)



Composite gender cable
(See p.19, 20)

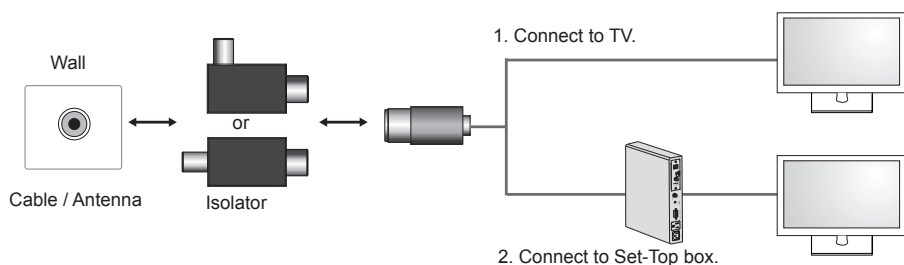


Isolator
(Depending on model)
(See p.6)

**NOTE**

- Antenna Isolator Installation Guide

- Use this to install TV in a place where there is a voltage difference between TV Set and GND of antenna signal.
 - » If there is a voltage difference between TV Set and GND of antenna signal, the antenna contact might be heated and excessive heat might cause an accident.
- You can improve the safety when watching TV by efficiently removing power voltage from TV antenna. It is recommended to mount the isolator to the wall. If it cannot be mounted to the wall, mount it on the TV. Avoid disconnecting the antenna Isolator after installation.
- Before starting, be sure that the TV antenna is connected.



Connect one end of the isolator to cable/antenna jack and the other to TV set or set-top box.

“Equipment connected to the protective earthing of the building installation through the mains connection or through other equipment with a connection to protective earthing - and to a cable distribution system using coaxial cable, may in some circumstances create a fire hazard. Connection to a cable distribution system has therefore to be provided through a device providing electrical isolation below a certain frequency range (galvanic isolator, see EN 60728-11)”

When applying the RF Isolator, a slight loss of signal sensitivity can occur.

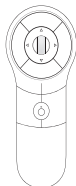
Separate purchase

Separate purchase items can be changed or modified for quality improvement without any notification.

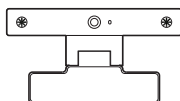
Contact your dealer to buy these items.

These devices only work with certain models.

The model name or design may be changed depending on the upgrade of product functions, manufacturer's circumstances or policies.



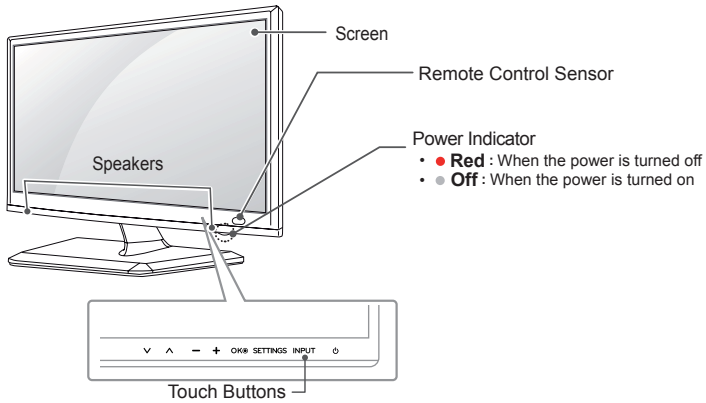
AN-MR400
Magic Remote



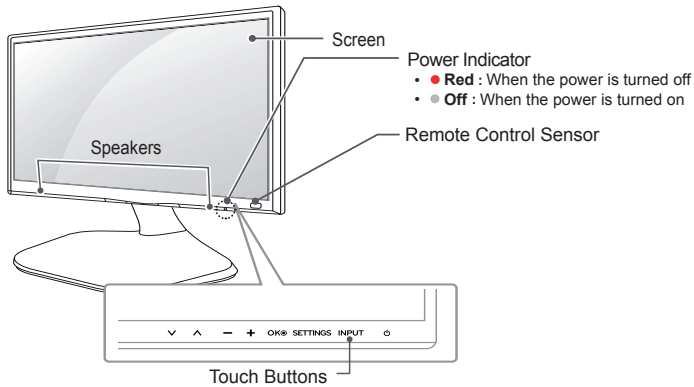
AN-VC4**
Video call camera

Parts and buttons

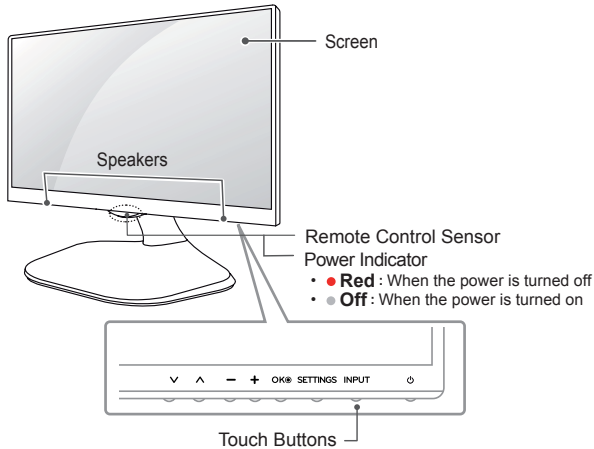
MT35*



MT55*



MT75*





NOTE

- All of the buttons are touch sensitive and can be operated through simple touch with your finger.
- Power and control touch button are located on the bottom. (Only MT75*)
- You can set the power indicator light to on or off by selecting **OPTION** in the main menus.

Touch button	Description
∨ ∧	Scrolls through the saved programmes.
− +	Adjusts the volume level.
OK Ⓞ	Selects the highlighted menu option or confirms an input.
SETTINGS	Accesses the main menus, or saves your input and exits the menus.
INPUT	Changes the input source.
⏻	Turns the power on or off.

Lifting and moving the TV

Please note the following advice to prevent the TV from being scratched or damaged and for safe transportation regardless of its type and size.

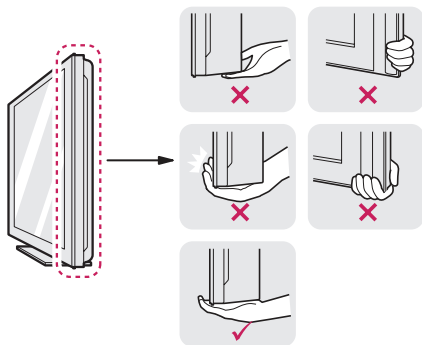


CAUTION

- Avoid touching the screen at all times, as this may result in damage to the screen.
- It is recommended to move the TV in the box or packing material that the TV originally came in.
- Before moving or lifting the TV, disconnect the power cord and all cables.
- When holding the TV, the screen should face away from you to prevent the screen from scratches.



- Hold the top and bottom of the TV frame firmly. Make sure not to hold the transparent part, speaker, or speaker grill area.



- When transporting the TV, do not expose the TV to jolts or excessive vibration.
- When transporting the TV, keep the TV upright, never turn the TV on its side or tilt towards the left or right.
- Do not apply excessive pressure to cause flexing /bending of frame chassis as it may damage screen.

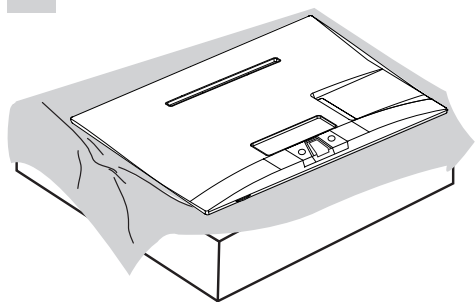
Setting up the TV

Image shown may differ from your TV.

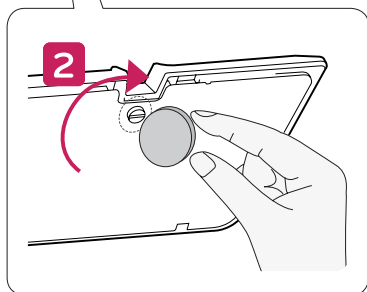
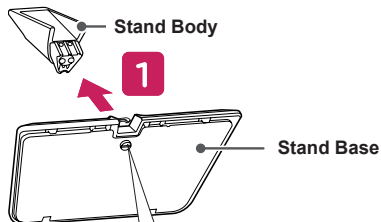
Attaching the Stand

MT35*

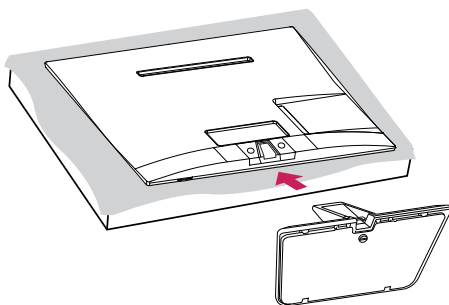
1



2



3



CAUTION

- When attaching the stand to the TV set, place the screen facing down on a cushioned table or flat surface to protect the screen from scratches.

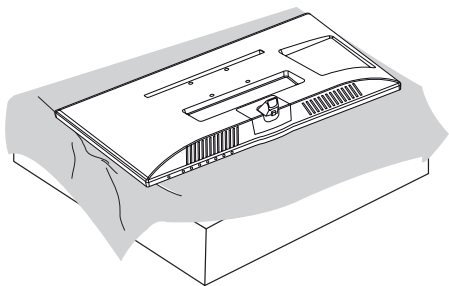


NOTE

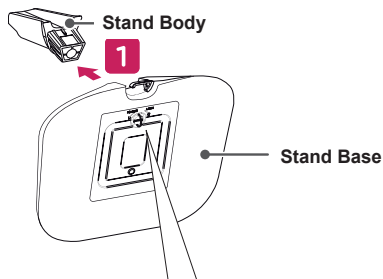
- Remove the stand before installing the TV on a wall mount by performing the stand attachment in reverse.

MT55* / MT75*

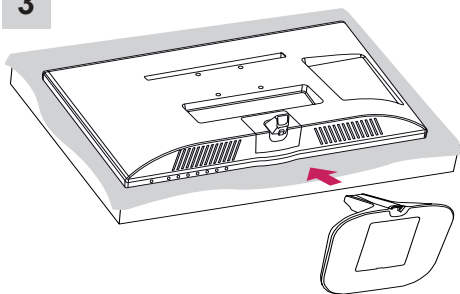
1



2



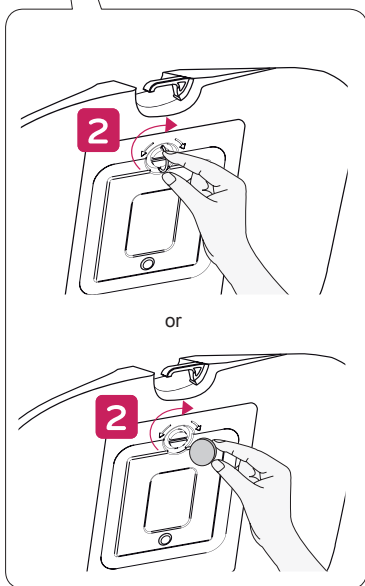
3

**CAUTION**

- When attaching the stand to the TV set, place the screen facing down on a cushioned table or flat surface to protect the screen from scratches.

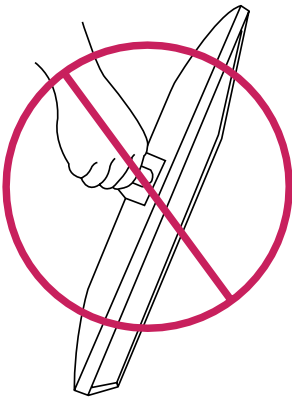
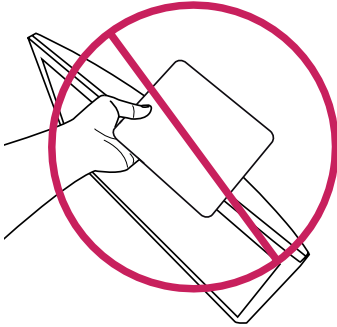
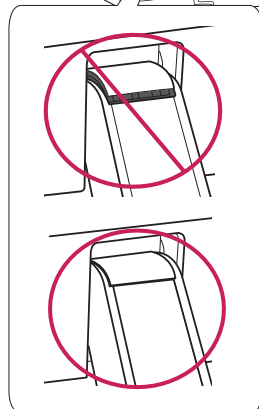
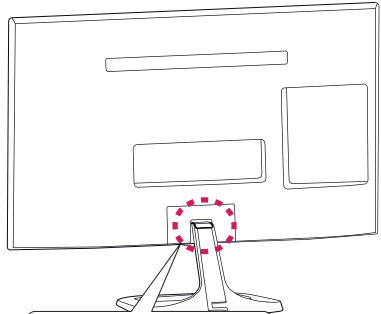
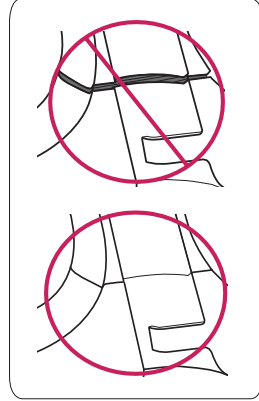
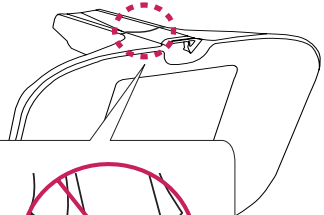
**NOTE**

- Remove the stand before installing the TV on a wall mount by performing the stand attachment in reverse.



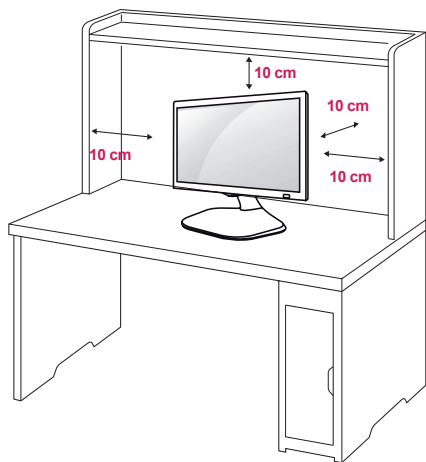
**CAUTION**

- Do not carry the monitor upside-down by holding the stand body (or stand base) as this may cause it to fall off, resulting in damage or injury.
- The illustration shows a general example of installation and may look different from the actual product.

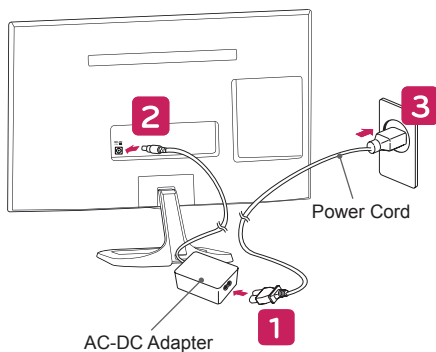
**CAUTION**

Mounting on a table

- 1 Lift and tilt the TV into its upright position on a table. Leave a 10 cm (minimum) space from the wall for proper ventilation.



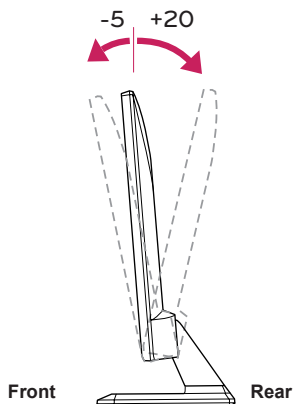
- 2 Connect the **AC-DC Adapter** and **Power Cord** to a wall outlet.



Adjusting the angle of the TV to suit view

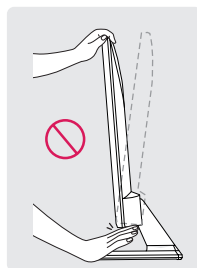
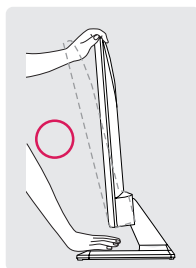
- Image shown may differ from your TV.

Tilt from +20 to -5 degrees up or down to adjust the angle of the TV to suit your view.



CAUTION

- When you adjust the angle, do not hold the bottom of the TV frame as shown on the following illustration, as may injure your fingers.



CAUTION

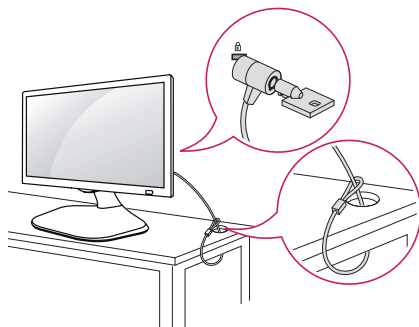
- Do not place the TV near or on sources of heat, as this may result in fire or other damage.
- Please be sure to connect the TV to the AC/DC power adapter before connecting the TV's power plug to a wall power outlet.

Using the Kensington security system

- Image shown may differ from your TV.

The Kensington security system connector is located at the back of the TV. For more information of installation and using, refer to the manual supplied with the Kensington security system or visit <http://www.kensington.com>.

Connect the Kensington security system cable between the TV and a table.

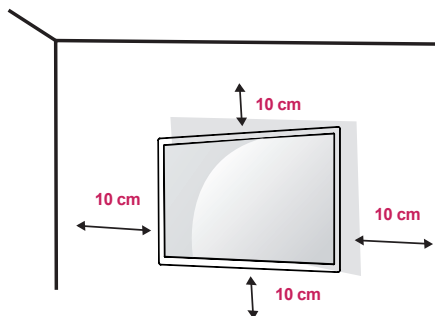


NOTE

- The Kensington security system is optional. You can obtain additional accessories from most electronics stores.

Mounting on a wall

For proper ventilation, allow a clearance of 10 cm on each side and from the wall. Detailed installation instructions are available from your dealer, see the optional Tilt Wall Mounting Bracket Installation and Setup Guide.

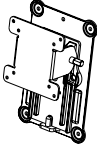


If you intend to mount the TV to a wall, attach Wall mounting interface (optional parts) to the back of the TV.

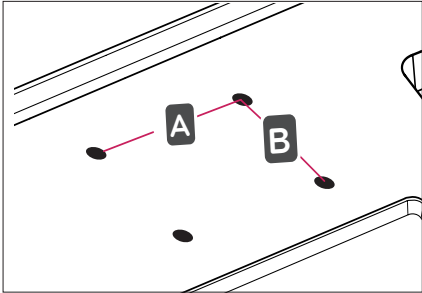
When you install the TV using the wall mounting interface (optional parts), attach it carefully so it will not drop.

- 1 Please, Use the screw and wall mount interface in accordance with VESA Standards.
- 2 If you use screw longer than standard, the TV might be damaged internally.
- 3 If you use improper screw, the product might be damaged and drop from mounted position. In this case, LG Electronics is not responsible for it.
- 4 VESA compatible only with respect to screw mounting interface dimensions and mounting screw specifications.
- 5 Please use VESA standard as below.
 - 784.8 mm and under
 - * Wall Mount Pad Thickness : 2.6 mm
 - * Screw : Φ 4.0 mm x Pitch 0.7 mm x Length 10 mm
 - 787.4 mm and above
 - * Please use VESA standard wall mount pad and screws.

Separate purchase(Wall Mounting Bracket)

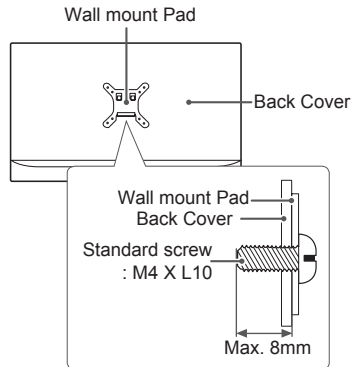
Model	24MT35* 27MT55* 27MT75*
VESA (A x B)	100 x 100
Standard screw	M4 x L10
Number of screws	4
Wall mount bracket (optional)	RW120 

- VESA (A x B)



CAUTION

- Disconnect the power first, and then move or install the TV. Otherwise electric shock may occur.
- If you install the TV on a ceiling or slanted wall, it may fall and result in severe injury. Use an authorized LG wall mount and contact the local dealer or qualified personnel.
- Do not over tighten the screws as this may cause damage to the TV and void your warranty.
- Use the screws and wall mounts that meet the VESA standard. Any damages or injuries by misuse or using an improper accessory are not covered by the warranty.
- Screw length from outer surface of back cover should be under 8mm.

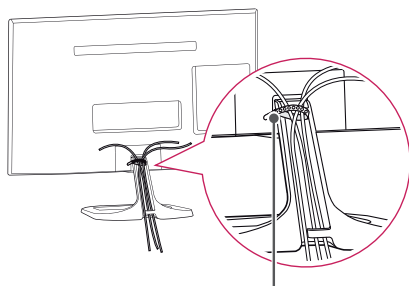


NOTE

- Use the screws that are listed on the VESA standard screw specifications.
- The wall mount kit includes an installation manual and necessary parts.
- The wall mount bracket is optional. You can obtain additional accessories from your local dealer.
- The length of screws may differ depending on the wall mount. Be sure to use the proper length.
- For more information, refer to the instructions supplied with the wall mount.

Tidying cables

- 1 Gather and bind the cables with the Cable Tie.
- 2 Place the cable on the hook located on the stand base.



Cable Tie

MAKING CONNECTIONS

This section on **MAKING CONNECTIONS** mainly uses diagrams for the **27MT55S** models.

Connect various external devices to the TV and switch input modes to select an external device. For more information about an external device's connection, refer to the manual supplied with each device.

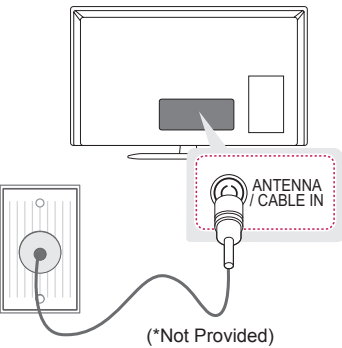
Available external devices are: HD receivers, DVD players, VCRs, audio systems, USB storage devices, PC, camcorders or cameras, gaming devices, and other external devices.



NOTE

- The external device connection may differ from the model.
- Connect external devices to the TV regardless of the order of the TV port.
- If you record a TV programme on a DVD recorder or VCR, make sure to connect the TV signal input cable to the TV through a DVD recorder or VCR. For more information of recording, refer to the manual provided with the connected device.
- Refer to the external equipment's manual for operating instructions.
- If you connect a gaming device to the TV, use the cable supplied with the gaming device.
- In PC mode, there may be noise associated with the resolution, vertical pattern, contrast or brightness. If noise is present, change the PC output to another resolution, change the refresh rate to another rate or adjust the brightness and contrast on the PICTURE menu until the picture is clear.
- In PC mode, some resolution settings may not work properly depending on the graphics card.

Antenna Connection



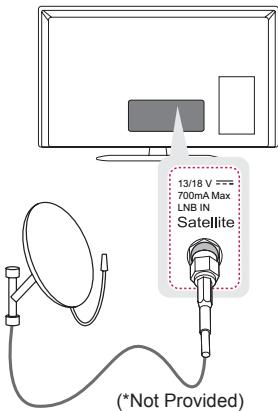
Connect the TV to a wall antenna socket with an RF cable (75 Ω).

NOTE

- Use a signal splitter to use more than 2 TVs.
- If the image quality is poor, install a signal amplifier properly to improve the image quality.
- If the image quality is poor with an antenna connected, try to realign the antenna in the correct direction.
- An antenna cable and converter are not supplied.
- Supported DTV Audio: MPEG, Dolby Digital, Dolby Digital Plus, HE-AAC.

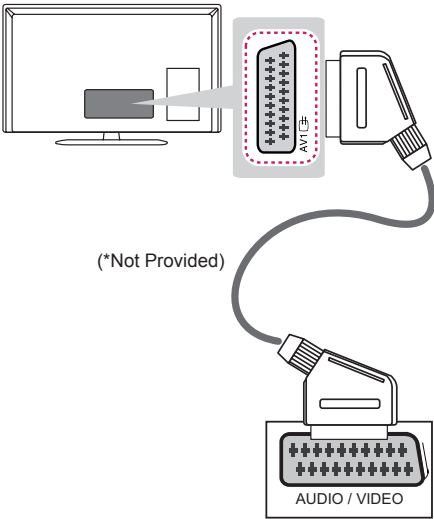
Satellite dish Connection

(Only satellite models)



Connect the TV to a satellite dish to a satellite socket with a satellite RF cable (75 Ω).

Euro Scart Connection



Transmits the video and audio signals from an external device to the TV set. Connect the external device and the TV set with the euro scart cable as shown.

Current input mode	Output Type	AV1 (TV Out ¹)
Digital TV		Digital TV
Analogue TV, AV		Analogue TV
Component		
HDMI		

1 TV Out : Outputs Analogue TV or Digital TV signals.

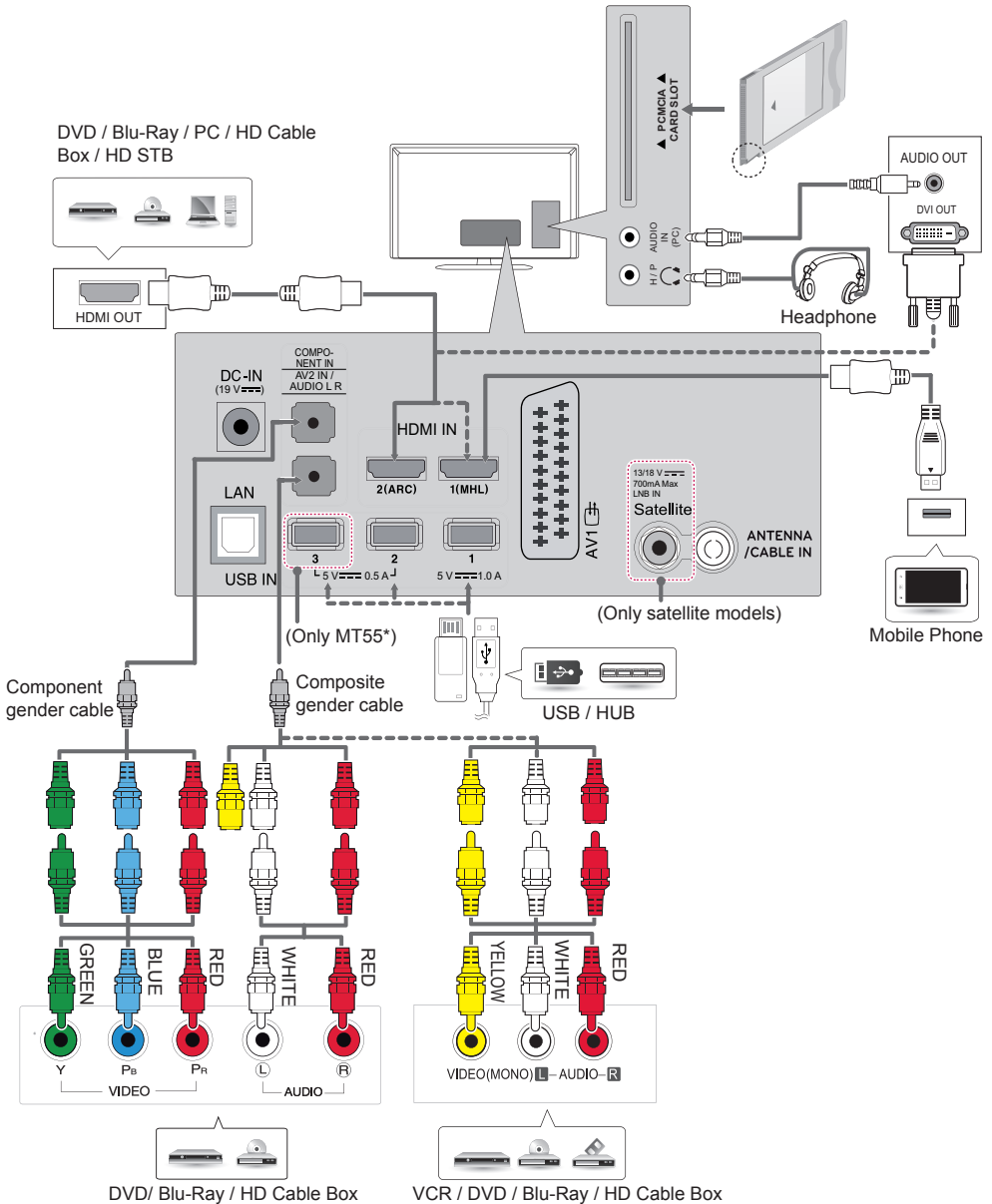
NOTE

- Any Euro scart cable used must be signal shielded.

Other Connections

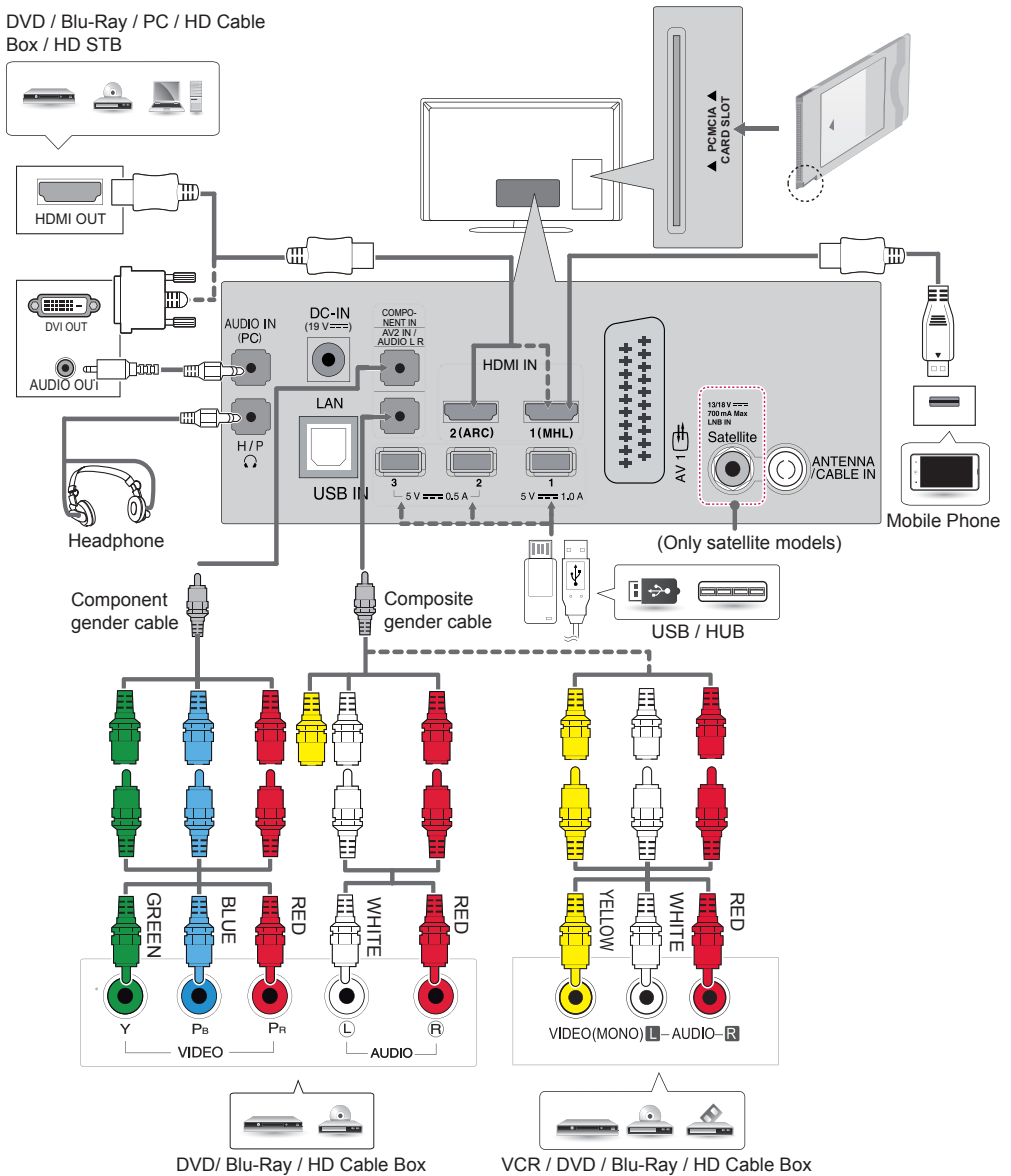
Connect your TV to external devices. For the best picture and audio quality, connect the external device and the TV with the HDMI cable as shown. Some separate cable is not provided.

MT35*, MT55*



MT75*

DVD / Blu-Ray / PC / HD Cable
Box / HD STB



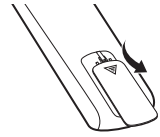
REMOTE CONTROL

The descriptions in this manual are based on the buttons on the remote control.

Please read this manual carefully and use the TV correctly.

To replace batteries, open the battery cover, replace batteries (1.5 V AAA) matching the \oplus and \ominus ends to the label inside the compartment, and close the battery cover.

To remove the batteries, perform the installation actions in reverse.



ENGLISH



CAUTION

- Do not mix old and new batteries, as this may damage the remote control.

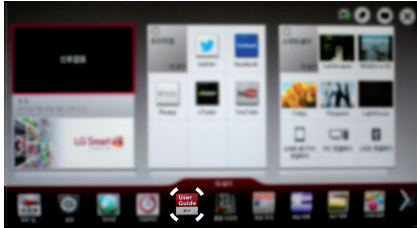
Make sure to point the remote control toward the remote control sensor on the TV.

	<p>POWER Turns the TV on or off.</p> <p>TV/RAD Selects Radio, TV and DTV programme.</p> <p>Q.MENU Accesses the Quick menus.</p> <p>SUBTITLE Recalls your preferred subtitle in digital mode.</p> <p>GUIDE Shows programme guide.</p> <p>RATIO Resizes an image.</p> <p>INPUT Changes the input source.</p>
	<p>Number buttons Enters numbers.</p> <p>LIST Accesses the saved programme list.</p> <p>Q.VIEW Returns to the previously viewed programme.</p> <p>+ / - Adjusts the volume level.</p> <p>FAV Accesses your favorite programme list.</p> <p>APP/* Select the MHP TV menu source. (Only Italy) (Depending on model)</p> <p>MUTE Mutes all sounds.</p> <p>^ P v Scrolls through the saved programmes.</p> <p>^ PAGE v Moves to the previous or next screen.</p>
	<p>Teletext buttons (TEXT / T.OPT) These buttons are used for teletext.</p> <p>INFO Views the information of the current programme and screen.</p>
	<p>SMART Accesses the Smart Home menus.</p> <p>MY APPS Shows the list of Apps.</p> <p>Navigation buttons (up/down/left/right) Scrolls through menus or options.</p> <p>OK Selects menus or options and confirms your input.</p> <p>BACK Returns to the previous level.</p> <p>EXIT Clears on-screen displays and return to TV viewing.</p> <p>SETTINGS Accesses the main menus.</p> <p>* Not functional.</p>
	<p>LIVE TV Returns to LIVE TV.</p> <p>Control buttons Controls the Premium contents, SmartShare menus or the SIMPLINK compatible devices (USB or SIMPLINK).</p> <p>Colour buttons These access special functions in some menus. (Red): Red, (Green): Green, (Yellow): Yellow, (Blue): Blue</p>

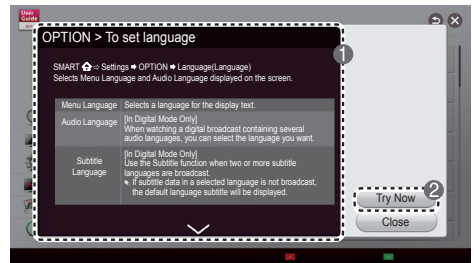
USING THE USER GUIDE

- Image shown may differ from your TV.

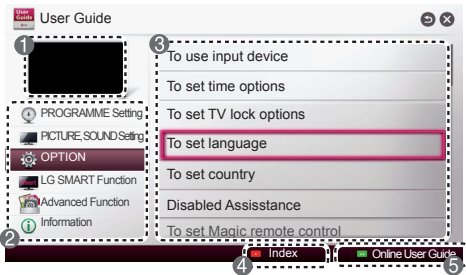
- Press **SMART** button to access the Home menu.
- Select **User Guide** and press **OK**.



User Guide



- Shows the description of the selected menu. You can use **^** **v** to move between pages.
- Moves to the selected menu directly from the User Guide.



- Shows the current watching programme or input source screen.
- Allows to select the category you want.
- Allows to select the item you want. You can use **^** **v** to move between pages.

- Allows to browse the description of the function you want from the index.

Provides the detailed information on the functions of LG Smart TV when the Internet is connected.

- (It may not be available depending on the country/language.)

MAINTENANCE

Cleaning Your TV

Clean your TV regularly to keep the best performance and to extend the product lifespan.



CAUTION

- Make sure to turn the power off and disconnect the power cord and all other cables first.
- When the TV is left unattended and unused for a long time, disconnect the power cord from the wall outlet to prevent possible damage from lightning or power surges.

Screen, frame, cabinet and stand

- To remove dust, wipe the surface with a dry and soft cloth.
- To remove major dirt, wipe the surface with a soft cloth dampened in clean water or a diluted mild detergent. Then wipe immediately with a clean and dry cloth.



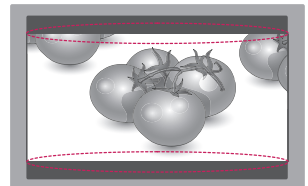
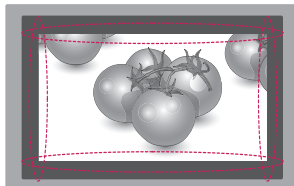
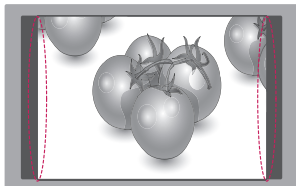
CAUTION

- Avoid touching the screen at all times, as this may result in damage to the screen.
- Do not push, rub, or hit the screen surface with your fingernail or a sharp object, as this may result in scratches and image distortions.
- Do not use any chemicals as this may damage the product.
- Do not spray liquid onto the surface. If water enters the TV, it may result in fire, electric shock, or malfunction.

Power cord

Remove the accumulated dust or dirt on the power cord regularly.

Preventing “Image burn” or “Burn-in” on your TV screen



- If a fixed image displays on the TV screen for a long period of time, it will be imprinted and become a permanent disfigurement on the screen. This is “image burn” or “burn-in” and not covered by the warranty.
- If the aspect ratio of the TV is set to 4:3 for a long period of time, image burn may occur on the letterboxed area of the screen.
- Avoid displaying a fixed image on the TV screen for a long period of time (2 or more hours for LCD) to prevent image burn.

TROUBLESHOOTING

Problem	Solution
Cannot control the TV with the remote control.	<ul style="list-style-type: none"> Check the remote control sensor on the product and try again. Check if there is any obstacle between the product and the remote control. Check if the batteries are still working and properly installed (+ to +, - to -).
No image display and no sound is produced.	<ul style="list-style-type: none"> Check if the product is turned on. Check if the power cord is connected to a wall outlet. Check if there is a problem in the wall outlet by connecting other products.
The TV turns off suddenly.	<ul style="list-style-type: none"> Check the power control settings. The power supply may be interrupted. Check if the Automatic Standby (Depending on model) / Sleep Timer / Off Time feature is activated in the TIME settings. If there is no signal while the TV is on, the TV will turn off automatically after 15 minutes of inactivity.
When connecting to the PC (HDMI/DVI), 'No signal' or 'Invalid Format' is displayed.	<ul style="list-style-type: none"> Turn the TV off/on using the remote control. Reconnect the HDMI cable. Restart the PC with the TV on.

SPECIFICATIONS

Wireless LAN module (TWFM-B006D) specification	
Standard	IEEE 802.11a/b/g/n
Frequency Range	2400 to 2483.5 MHz 5150 to 5250 MHz 5725 to 5850 MHz (for Non EU)
Output Power (Max.)	802.11a: 11 dBm 802.11b: 14 dBm 802.11g: 10.5 dBm 802.11n - 2.4GHz: 11 dBm 802.11n - 5GHz: 12.5 dBm
<ul style="list-style-type: none">Because band channel used by the country could be different, the user can not change or adjust the operating frequency and this product is set for the regional frequency table.This device should be installed and operated with minimum distance 20 cm between the device and your body. And this phrase is for the general statement for consideration of user environment.	
C € 0197 ⚠	

Product specifications may be changed without prior notice due to upgrade of product functions.

MODELS		24MT35S	27MT55S
Dimensions (W x H x D)	With stand (mm)	556.5 x 414.7 x 180.9	641.2 x 489.1 x 213.2
	Without stand (mm)	556.5 x 343.1 x 62.9	641.2 x 391.3 x 77.6
Weight	With stand (kg)	4.0	5.3
	Without stand (kg)	3.7	4.7
Power consumption		29 W	35 W
Power requirement		19 V $\overline{\text{---}}$ 3.2 A	
AC/DC Adapter		Manufacturer : APD Model : DA-65G19	

MODELS		27MT75S
Dimensions (W x H x D)	With stand (mm)	622.7 x 476.2 x 213.2
	Without stand (mm)	622.7 x 377.9 x 79.5
Weight	With stand (kg)	4.9
	Without stand (kg)	4.5
Power consumption		34 W
Power requirement		19 V $\overline{\text{---}}$ 3.2 A
AC/DC Adapter		Manufacturer : APD Model : DA-65G19

CI Module Size (W x H x D)		100.0 mm x 55.0 mm x 5.0 mm
Environment condition	Operating Temperature	10 °C to 35 °C
	Operating Humidity	20 % to 80 %
	Storage Temperature	-10 °C to 60 °C
	Storage Humidity	5 % to 90 %

	Digital TV	Analogue TV
Television system	DVB-T(*DVB-T/T2) DVB-C DVB-S/S2	PAL/SECAM B/G/I/D/K, SECAM L/L'
Programme coverage	VHF, UHF C-Band, Ku-Band	VHF: E2 to E12, UHF : E21 to E69, CATV: S1 to S20, HYPER: S21 to S47
Maximum number of storable programmes	DVB-S/S2 : 6,000 DVB-T/T2/C & Analogue TV : 1,500	
External antenna impedance	75 Ω	

* : Only DVB-T2 support model

HDMI (PC) supported mode

(Only MT35*)

Resolution	Horizontal Frequency(kHz)	Vertical Frequency(Hz)
640 x 350	31.468	70.09
720 x 400	31.469	70.08
640 x 480	31.469	59.94
800 x 600	37.879	60.31
1024 x 768	48.363	60.00
1152 x 864	54.348	60.053
1360 x 768	47.712	60.015

(Only MT55* / MT75*)

Resolution	Horizontal Frequency(kHz)	Vertical Frequency(Hz)
640 x 350	31.468	70.09
720 x 400	31.469	70.08
640 x 480	31.469	59.94
800 x 600	37.879	60.317
1024 x 768	48.363	60.004
1152 x 864	54.348	60.053
1360 x 768	47.712	60.015
1280 x 1024	63.981	60.02
1920 x 1080	67.50	60.00



NOTE

- The optimal display resolution is 1360 X 768 @ 60Hz (MT35*), 1920 X 1080 @ 60Hz (MT75* / MT55*)
- The optimal timing in each mode is vertical frequency 60Hz.

HDMI (DTV) supported mode

Resolution	Horizontal Frequency(kHz)	Vertical Frequency(Hz)
640 x 480	31.469 / 31.50	59.94 / 60.00
720 x 480	31.469 / 31.50	59.94 / 60.00
720 x 576	31.25 15.625	50.00 50.00
1280 x 720	37.50 44.96 / 45.00	50.00 59.94 / 60.00
1920 x 1080	33.72 / 33.75 28.125 26.97 / 27.00 33.716 / 33.75 56.25 67.43 / 67.50	59.94 / 60.00 25.00 / 50.00 23.97 / 24.00 29.976 / 30.00 50.00 59.94 / 60.00

Component port connecting information

Component ports on the TV	Y	P _B	P _R
---------------------------	---	----------------	----------------

Video output ports on DVD player	Y	P _B	P _R
	Y	B-Y	R-Y
	Y	Cb	Cr
	Y	Pb	Pr

Signal	Component
480i / 576i	O
480p / 576p	O
720p / 1080i	O
1080p	O (50 Hz / 60 Hz only)

**NOTE**

- Avoid keeping a fixed image on the set's screen for prolonged periods of time. The fixed image may become permanently imprinted on the screen. Use a screen saver when possible.
- There may be interference relating to resolution, vertical pattern, contrast or brightness in PC mode. Change the PC mode to another resolution or change the refresh rate to another rate or adjust the brightness and contrast on the menu until the picture is clear. If the refresh rate of the PC graphic card can not be changed, change the PC graphic card or consult the manufacturer of the PC graphic card.
- The synchronization input waveform for Horizontal and Vertical frequencies are separate.
- Connect the audio cable from the PC to the Audio input on the TV. (Audio cables are not included with the TV).
- If using a sound card, adjust PC sound as required.
- DOS mode may not work depending on the video card if you use an HDMI to DVI cable.



Make sure to read the Safety Precautions before using the product.

Keep the Owner's Manual (CD) in an accessible place for future reference. The model and serial number of the TV is located on the back and one side of the TV. Record it below should you ever need service.

MODEL _____

SERIAL _____