

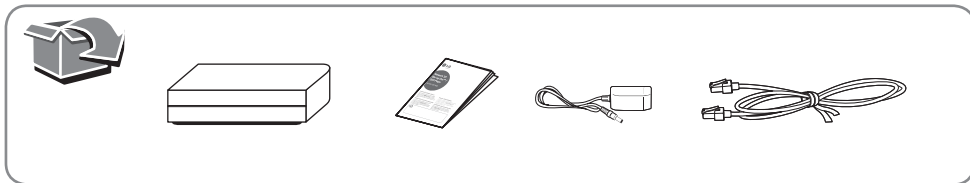
MUSICflow R1

SMART Hi-Fi AUDIO
Multi-room Network Bridge

Model : MR140 (R1)

ENGLISH | SIMPLE MANUAL

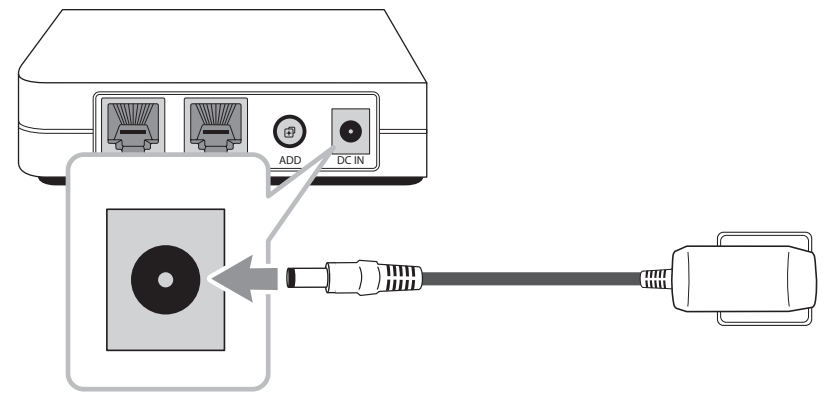
Please read this manual carefully before operating your unit and retain it for future reference. For more details, please refer to H5 / H7's Owner's Manual on <http://www.lg.com>.



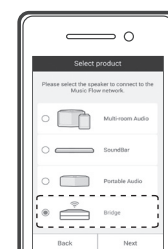
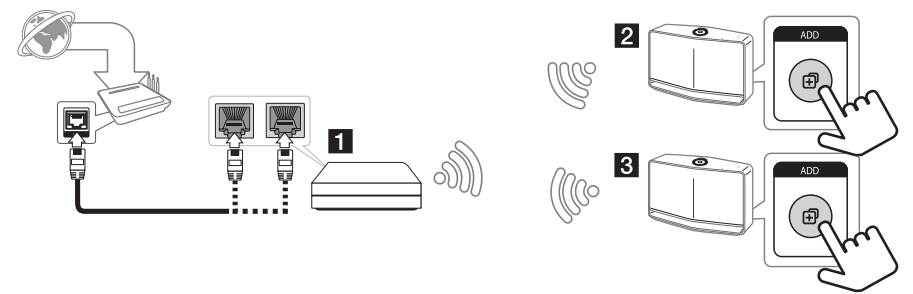
www.lg.com



Connecting the AC Adapter



Connecting to Router

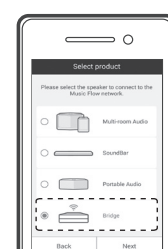
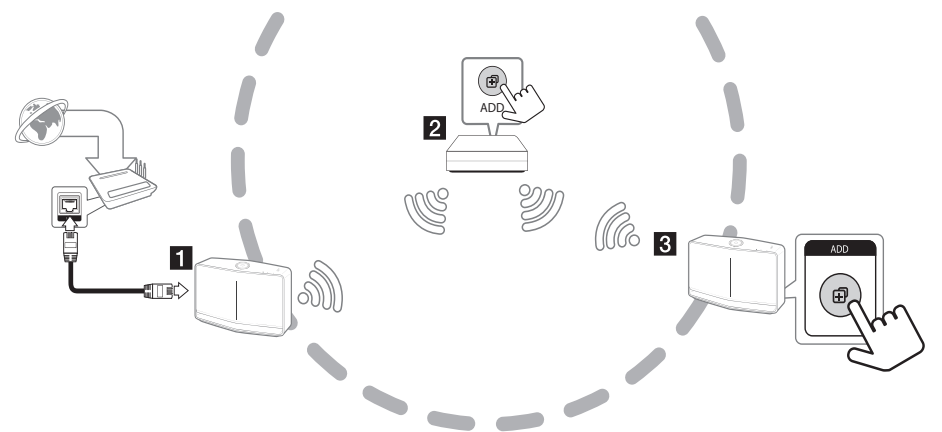


On Music Flow Player app, follow the direction on screen.



Connecting to Speaker

Extending Wireless Network Range

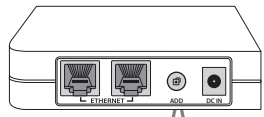


On Music Flow Player app, follow the direction on screen.

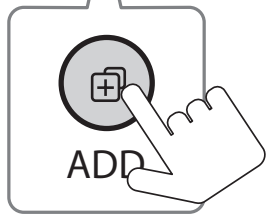
- ! You cannot connect R1 (MR140) to a router wirelessly.
- The connected R1 (MR140) is displayed on [Settings].



Reset the Bridge



Press and hold the **ADD** button for 8 seconds.



Specification

ENGLISH

Power Supply	12 V 1 A (AC adapter : WA-12M12FN)
Power consumption	5 W
Dimensions (W x H x D)	Approx. 110 mm x 30.5 mm x 110 mm
Net Weight (Approx.)	0.25 kg

Design and specifications are subject to change without notice.

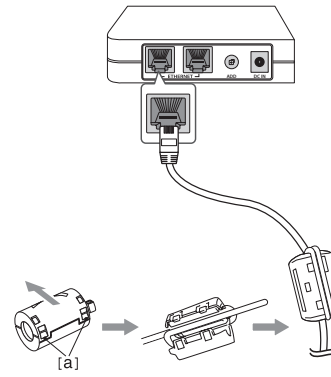


About Ferrite Core (Optional)

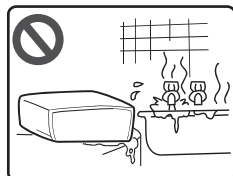
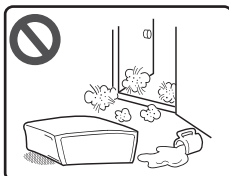
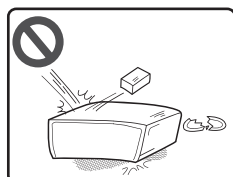
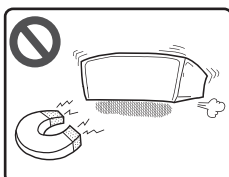
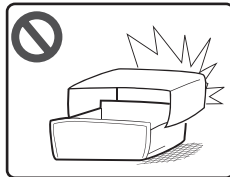
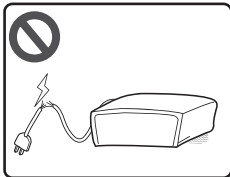
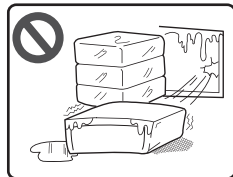
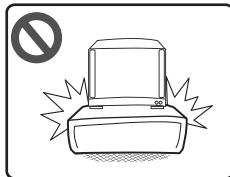
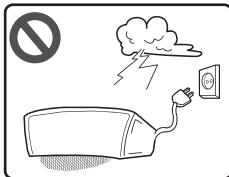
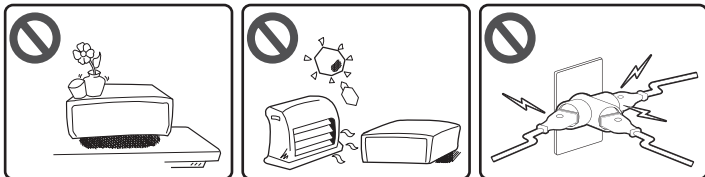
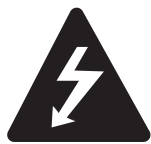
How to attach the ferrite core

This ferrite core can reduce or eliminate electrical interference.

1. Pull the stopper [a] of the ferrite core to open.
2. Wind the LAN cable on the ferrite core.
3. Close the ferrite core until it clicks.



Safety Information



CAUTION

**RISK OF ELECTRIC SHOCK
DO NOT OPEN**



CAUTION: TO REDUCE THE RISK OF ELECTRIC SHOCK DO NOT REMOVE COVER (OR BACK) NO USER-SERVICEABLE PARTS INSIDE REFER SERVICING TO QUALIFIED SERVICE PERSONNEL.



This lightning flash with arrowhead symbol within an equilateral triangle is intended to alert the user to the presence of uninsulated dangerous voltage within the product's enclosure that may be of sufficient magnitude to constitute a risk of electric shock to persons.



The exclamation point within an equilateral triangle is intended to alert the user to the presence of important operating and maintenance (servicing) instructions in the literature accompanying the product.

WARNING: TO PREVENT FIRE OR ELECTRIC SHOCK HAZARD, DO NOT EXPOSE THIS PRODUCT TO RAIN OR MOISTURE.

WARNING: Do not install this equipment in a confined space such as a book case or similar unit.

CAUTION: The apparatus shall not be exposed to water (dripping or splashing) and no objects filled with liquids, such as vases, shall be placed on the apparatus.

CAUTION: Do not block any ventilation openings. Install in accordance with the manufacturer's instructions. Slots and openings in the cabinet are provided for ventilation and to ensure reliable operation of the product and to protect it from over heating. The openings shall be never be blocked by placing the product on a bed, sofa, rug or other similar surface. This product shall not be placed in a built-in installation such as a bookcase or rack unless proper ventilation is provided or the manufacturer's instruction has been adhered to.

CAUTION concerning the Power Cord

To disconnect power from the mains, pull out the mains cord plug. When installing the product, ensure that the plug is easily accessible.

NOTICE: For safety marking information including product identification and supply ratings, please refer to the main label on the bottom or rear of the apparatus.

CAUTION: Only use the AC adapter supplied with this device. Do not use a power supply from another device or manufacturer. Using any other power cable or power supply may cause damage to the device and void your warranty.

CAUTION: Do not use this appliance in or near bathtubs, showers, basins or other vessels containing water. Ensure at least 1 metre distance between the appliance and any water to reduce the risk of electric shock or fire.

- The appliance is not intended for use by young children or infirm persons without supervision.
- Young Children should be supervised to ensure that they do not play with appliance.
- If the appliance is supplied from a cord extension set or an electrical portable outlet device, the cord extension set on electrical portable outlet device must be positioned so that it is not subject to splashing or ingress of moisture.
- Ensure that proper ventilation systems are used or windows are left open if the appliance is used in areas such as bathrooms where the humidity is greater than 80 %.