



OWNER'S MANUAL

# Sound Bar System

Please read this manual carefully before operating  
your set and retain it for future reference.

NB4535A (NB4535A, S43A1-D)



ENGLISH

DEUTSCH

FRANÇAIS

NEDERLANDS

SLOVENŠČINA

ITALIANO

ESPAÑOL

ΕΛΛΗΝΙΚΑ

PORTUGUÊS

[www.lg.com](http://www.lg.com)

## Safety Information



**CAUTION:** TO REDUCE THE RISK OF ELECTRIC SHOCK DO NOT REMOVE COVER (OR BACK) NO USER-SERVICEABLE PARTS INSIDE REFER SERVICING TO QUALIFIED SERVICE PERSONNEL.



This lightning flash with arrowhead symbol within an equilateral triangle is intended to alert the user to the presence of uninsulated dangerous voltage within the product's enclosure that may be of sufficient magnitude to constitute a risk of electric shock to persons.



The exclamation point within an equilateral triangle is intended to alert the user to the presence of important operating and maintenance (servicing) instructions in the literature accompanying the product.

**WARNING:** TO PREVENT FIRE OR ELECTRIC SHOCK HAZARD, DO NOT EXPOSE THIS PRODUCT TO RAIN OR MOISTURE.

**CAUTION:** The apparatus shall not be exposed to water (dripping or splashing) and no objects filled with liquids, such as vases, shall be placed on the apparatus.

**WARNING:** Do not install this equipment in a confined space such as a book case or similar unit.

**CAUTION:** Do not block any ventilation openings. Install in accordance with the manufacturer's instructions.

Slots and openings in the cabinet are provided for ventilation and to ensure reliable operation of the product and to protect it from over heating. The openings shall be never be blocked by placing the product on a bed, sofa, rug or other similar surface. This product shall not be placed in a built-in installation such as a bookcase or rack unless proper ventilation is provided or the manufacturer's instruction has been adhered to.

### CAUTION concerning the Power Cord

Most appliances recommend they be placed upon a dedicated circuit;

That is, a single outlet circuit which powers only that appliance and has no additional outlets or branch circuits. Check the specification page of this owner's manual to be certain. Do not overload wall outlets. Overloaded wall outlets, loose or damaged wall outlets, extension cords, frayed power cords, or damaged or cracked wire insulation are dangerous. Any of these conditions could result in electric shock or fire. Periodically examine the cord of your appliance, and if its appearance indicates damage or deterioration, unplug it, discontinue use of the appliance, and have the cord replaced with an exact replacement part by an authorized service center. Protect the power cord from physical or mechanical abuse, such as being twisted, kinked, pinched, closed in a door, or walked upon. Pay particular attention to plugs, wall outlets, and the point where the cord exits the appliance. To disconnect power from the mains, pull out the mains cord plug. When installing the product, ensure that the plug is easily accessible.

This device is equipped with a portable battery or accumulator.

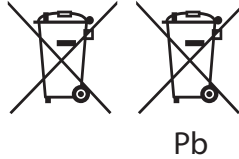
**Safety way to remove the battery or the battery from the equipment:** Remove the old battery or battery pack, follow the steps in reverse order than the assembly. To prevent contamination of the environment and bring on possible threat to human and animal health, the old battery or the battery put it in the appropriate container at designated collection points. Do not dispose of batteries or battery together with other waste. It is recommended that you use local, free reimbursement systems batteries and accumulators. The battery shall not be exposed to excessive heat such as sunshine, fire or the like.

### Disposal of your old appliance



1. All electrical and electronic products should be disposed of separately from the municipal waste stream via designated collection facilities appointed by the government or the local authorities.
2. The correct disposal of your old appliance will help prevent potential negative consequences for the environment and human health.
3. For more detailed information about disposal of your old appliance, please contact your city office, waste disposal service or the shop where you purchased the product.

### Disposal of waste batteries/accumulators



1. This symbol may be combined with chemical symbols for mercury(Hg), cadmium(Cd) or lead(Pb) if the battery Contains more that 0.0005% of mercury,0.002% of cadmium or 0.004% of lead.
2. All batteries/accumulators should be disposed separately from the municipal waste stream via designated collection facilities appointed by the government or the local authorities.
3. The correct disposal of Your old batteries/ accumulators will help to prevent potential negative consequences for the environment, animal and human health.
4. For more detailed information about disposal of Your old batteries/accumulators, please contact Your city office, waste disposal service or the shop where You purchased the product.

**Europe Notice**


LG Electronics hereby declares that this/these product(s) is/are in compliance with the essential requirements and other relevant provisions of Directive 1999/5/EC, 2004/108/EC, 2006/95/EC, 2009/125/EC and 2011/65/EU.

Please contact to the following address for obtaining a copy of the DoC (Declaration of Conformity).

**Contact office for compliance of this product :**

LG Electronics Inc.

EU Representative, Krijgsman 1,  
1186 DM Amstelveen, The Netherlands

- Please note that this is NOT a Customer Service contact point. For Customer Service Information, see Warranty Card or contact the dealer that you purchased this product.

Indoor Use Only

**RF Radiation Exposure Statement**

This equipment should be installed and operated with minimum distance 20 cm between the radiator and your body.

**Italy Notice**

A general authorization is requested for outdoor use in Italy.

The use of these equipments is regulated by:

1. D.L.gs 1.8.2003, n. 259, article 104 (attività subject to general authorization) for outdoor use and article 105 (free use) for indoor use, in both cases for private use.
2. D.M. 28.5.03, for supply to public of RLAN access to networks and telecom services.

L'uso degli apparati è regolamentato da:

1. D.L.gs 1.8.2003, n. 259, articoli 104 (attività soggette ad autorizzazione generale) se utilizzati al di fuori del proprio fondo e 105 (libero uso) se utilizzati entro il proprio fondo, in entrambi i casi per uso private.
2. D.M. 28.5.03, per la fornitura al pubblico dell'accesso R-LAN alle reti e ai servizi di telecomunicazioni.

**Brazil Notice**

Este equipamento opera em caráter secundário, isto é, não tem direito a proteção contra interferência prejudicial, mesmo de estações do mesmo tipo, e não pode causar interferência a sistemas operando em caráter primário.

# Table of Contents

## 1 Getting Started

- 2 Safety Information
- 6 Unique features
  - 6 – Auto power down
  - 6 – Portable In
  - 6 – Speaker ez (easy) setup
  - 6 – LG Sound Sync
- 6 Introduction
  - 6 – Symbols used in this manual
- 6 Accessories
- 7 Remote control
- 8 Front panel
- 8 Rear panel
- 9 Installing the sound bar
- 9 Installing the cover foot

## 2 Connecting

- 10 Mounting the main unit on a wall
- 12 Connecting the AC adapter
- 12 Setting up
  - 12 – Pairing wireless subwoofer
- 13 Connecting to your TV
  - 13 – Using an OPTICAL cable
  - 14 – Connecting with this unit and TV using an HDMI cable
    - 14 – HDMI cable Checklist
    - 14 – Enjoy rich sound broadcast of the channel by the sound bar
    - 16 – ARC (Audio Return Channel) function
    - 16 – Additional information for HDMI
    - 17 – What is SIMPLINK?
- 18 Optional equipment connection
  - 18 – HDMI connection
  - 19 – PORT. (Portable) IN connection
  - 19 – Listening to music from your portable player
    - 19 – OPTICAL IN connection
    - 19 – Speaker ez (easy) setup
  - 20 – USB playback
  - 20 – Playable file

## 3 Operating

- 21 Basic operations
  - 21 – USB operation
- 21 Other operations
  - 21 – DRC (Dynamic Range Control)
  - 21 – AV Sync
  - 21 – Turn off the sound temporarily
  - 21 – Displaying file and input source
  - 22 – AUTO POWER On/Off
  - 22 – Auto power down
  - 22 – Sleep timer setting
  - 23 – LG Sound Sync
- 24 Using Bluetooth technology
  - 25 – Listening to music stored on the Bluetooth devices
- 26 Sound adjustment
  - 26 – Setting the surround mode
  - 26 – Auto volume On/Off
  - 26 – Adjust the woofer level settings
- 27 Controlling a TV with the supplied remote control
  - 27 – Setting up the remote to control your TV

## 4 Troubleshooting

- 28 Troubleshooting

## 5 Appendix

- 29 Trademarks and licenses
- 30 Specifications
- 31 Maintenance
  - 31 – Handling the unit

1

2

3

4

5

## Unique features

### Auto power down

This unit supports to turn off by itself for saving energy consumption.

### Portable In

Listen to music from your portable device. (MP3, Notebook, etc)

### Speaker ez (easy) setup

Listen to sound from TV, DVD or Digital device with vivid 2.1 or 2.0 ch mode.

### LG Sound Sync

Controls volume level of this unit by the remote control of your LG TV that is compatible with LG Sound Sync.

## Introduction

### Symbols used in this manual

#### ! Note

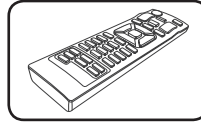
Indicates special notes and operating features.

#### ! Caution

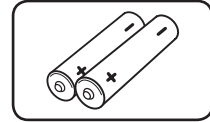
Indicates cautions for preventing possible damages from abuse.

## Accessories

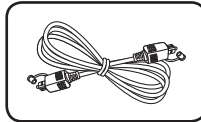
Please check and identify the supplied accessories.



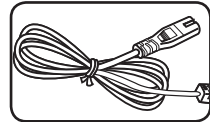
Remote control (1)



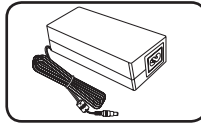
Batteries (2)



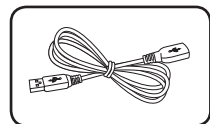
Optical cable (1)



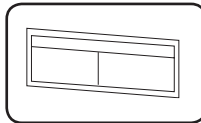
Power cord (1)



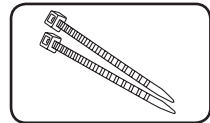
AC adapter (1)



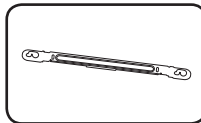
USB Cable (1)



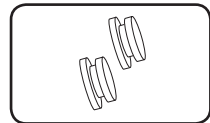
Wall Mount Bracket  
Installation Template  
(1)



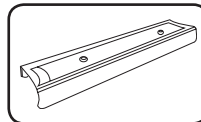
Cable ties for arranging  
cables (2)



Wall bracket (1)

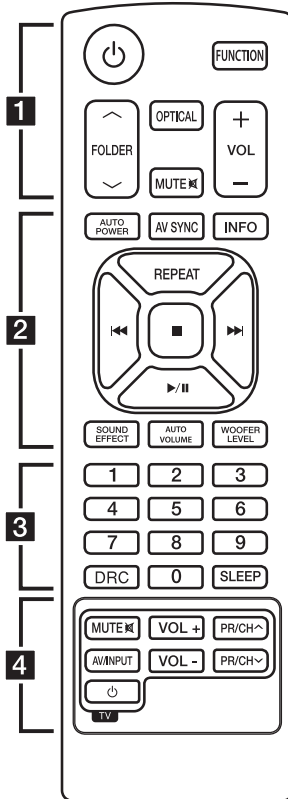


Shaft wall mount (2)



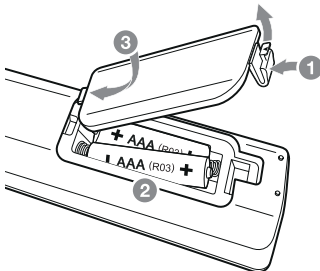
Cover foot\_19mm (1)

## Remote control



### Replacement of battery

Remove the battery cover on the rear of the Remote Control, and insert two (size AAA) battery with  $+$  and  $-$  matched correctly.



..... **1** .....

**Power** : Switches the unit ON or OFF.

**FUNCTION** : Selects the function and the input source.

**^ / V FOLDER** : Searches for a folder of MP3/WMA files. When a USB containing MP3/WMA files in several folders is being played, press **^ / V FOLDER** to select the folder you want to play.

**OPTICAL** : Changes input source to OPTICAL directly.

**MUTE** : Mutes the sound.

**VOL +/-** : Adjusts speaker volume.

..... **2** .....

**AUTO POWER** : This function is automatically turned on the unit. (Refer to the page 22)

**AV SYNC** : Synchronizes the audio and video.

**INFO** : Displays the information of a file or an input source.

**REPEAT** : Listens to your files repeatedly or randomly.

**⏮ / ⏭** (Skip/Search) :

- Skips Fast backward or Forward.
- Searches for a section within a file.

**■** (Stop) : Stops playback.

**▶ / ⏸** (Play/Pause) : Starts playback. / Pauses playback.

**SOUND EFFECT** : Selects a sound effect mode.

**AUTO VOLUME** : Turns on and off the AUTO VOLUME mode.

**WOOFER LEVEL** : Sets the sound level of woofer.

..... **3** .....

**0 to 9** numerical buttons : Selects a file directly.

**DRC** : Sets the DRC.

**SLEEP** : Sets the system to turn off automatically at a specified time.

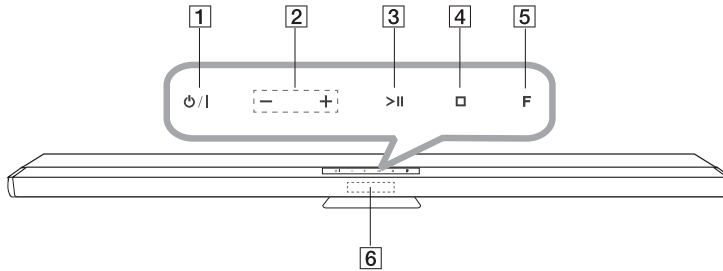
..... **4** .....

**TV Control buttons** : See page 27.

1

Getting Started

## Front panel



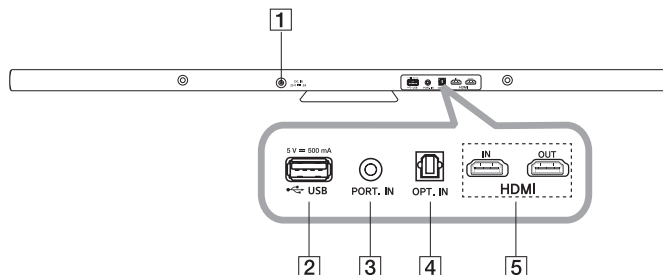
- 1** ⏻ / I      Power
- 2** - / + (Volume -/+)  
Adjusts volume level.
- 3** ⏮ / ⏭ (Play/Pause)
- 4** ⏹ (Stop)
- 5** F (Function)  
Selects the function and input source.
- 6** ⏏ (Display window)

### ! Caution

Precautions in using the touch buttons

- Use the touch buttons with clean and dry hands.
  - In a humid environment, wipe out any moisture on the touch buttons before using.
- Do not press the touch buttons hard to make it work.
  - If you apply too much strength, it can damage the sensor of the touch buttons.
- Touch the button that you want to work in order to operate the function correctly.
- Be careful not to have any conductive material such as metallic object on the touch buttons. It can cause malfunctions.

## Rear panel



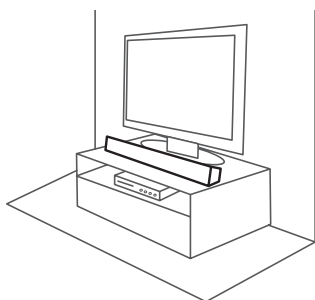
- 1** DC. IN 25V 2A
- 2** USB port
- 3** PORT.(Portable) IN
- 4** OPT.(Optical) IN
- 5** HDMI IN/ OUT



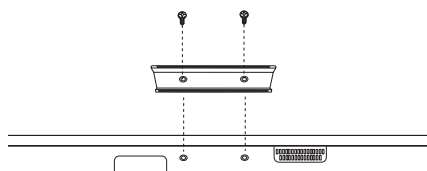
## Installing the sound bar

You can hear the sound by connecting the unit to the other device : TV, Blu-ray disc player, DVD player, etc.

Place the unit in front of the TV and connect it to the device you want. (Refer to pp.13 - 20)



## Installing the cover foot



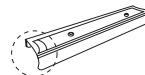
1. Turn the unit upside down.
2. Place the cover foot on the bottom of the unit to match screw holes with those on the unit.
3. Fix it with screws as shown in the illustration above.

### ! Note

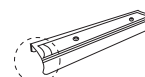
26mm



(It has been already installed to the unit.)



19mm

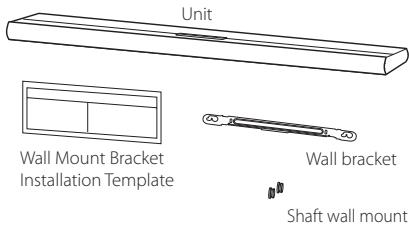


You can exchange 26 mm foot (factory installed) with 19 mm to change the height of your unit.

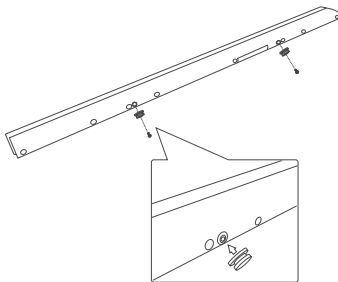
## Mounting the main unit on a wall

You can mount the main unit on a wall. Detach the cover foot of the unit, keep the detached cover foot for later installation and use the screws to hang the unit on the wall.

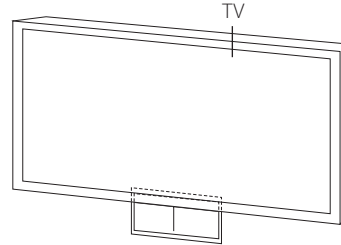
Prepare shaft wall mount and bracket.



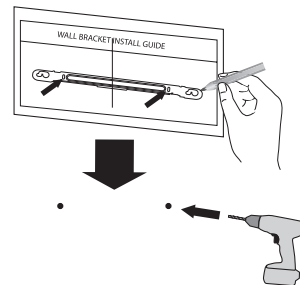
1. Locate the shaft wall mount on the screw hole of the unit's back and then fix it onto the unit with the screw.



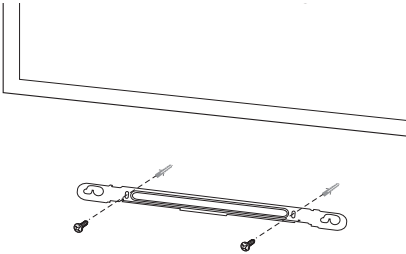
2. Match the TV's BOTTOM EDGE of Wall Mount Bracket Installation Template with the bottom of TV and attach to the position.



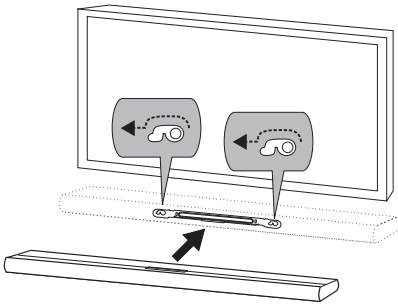
3. When you mount it on a wall (concrete), use the wall plugs. You should drill some holes. A guide sheet (Wall Mount Bracket Installation Template) is supplied to drill. Use the sheet to check the point to drill.



4. Remove the Wall Mount Bracket Installation Template.
5. Fix it with screws as shown in the illustration below.



6. Hang the main unit onto the bracket as shown below.

**Caution**

- Do not install this unit upside down. It can damage the parts of this unit or be the cause of personal injury.
- Do not hang onto the installed unit and avoid any impact to the unit.
- Secure the unit firmly to the wall so that it does not fall off. If the unit falls off, it may result in an injury or damage to the product.
- When the unit is installed on a wall, please make sure that a child does not pull any of connecting cables, as it may cause it to fall.

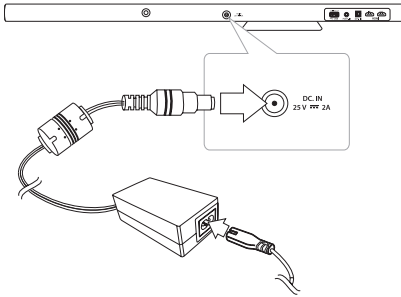
**Note**

Detach the unit from the bracket as shown below.



## Connecting the AC adapter

1. Connect the supplied AC power cord to the AC adapter.
2. Connect the AC adapter cable to DC, IN adapter input.
3. Plug the AC power cord into an AC outlet.



### Caution

Only use the AC adapter supplied with this device. Do not use a power supply from another device or manufacturer. Using any other power cable or power supply may cause damage to the device and void your warranty.

## Setting up

### Pairing wireless subwoofer

#### LED indicator of wireless subwoofer

LED Color	Status
Yellow	The wireless subwoofer is receiving the signal of the unit.
Yellow (blink)	The wireless subwoofer is trying to connect.
Red	The Wireless subwoofer is in standby mode.
Off (No display)	The power cord of wireless subwoofer is disconnected.

#### Setting up the wireless subwoofer for the first time

1. Connect the power cord of the Wireless subwoofer to the outlet.
2. Turn on the main unit : The main unit and wireless subwoofer will be automatically connected.

### Manually pairing wireless subwoofer

When your connection is not completed, you can see the red LED on the woofer and woofer is not made sound. To solve the problem, follow the below steps.

1. Press and hold **STOP** button on the unit and **MUTE** button on the remote control simultaneously.
  - Displays the "REMATE".
2. Press **PAIRING** on back of the woofer.
  - The yellow LED will flicker.
3. Turn off and on the unit.
  - If you see "Yellow" LED, it's successful.
4. If you don't see "Yellow" LED, try again Step 1 - Step 3.

### ! Note

- If you operate main unit then wireless subwoofer sound within a few seconds in standby mode.
- Set the distance between this unit and wireless subwoofer within 10 m (32 ft.).
- Optimum performance can be implemented only when the unit and the Wireless subwoofer within distance of 2 m (6 ft.) to 10 m (32 ft.) is used since communication failure may occur if longer distance is used.
- It takes a few seconds (and may take longer) for the unit and subwoofer to communicate with each other.

### ! Note

You can enjoy the TV sound through the speakers of this unit. But in the case of some TV models, you must select external speakers state of the TV on the menu. (For details, refer to your TV user manual.)

2

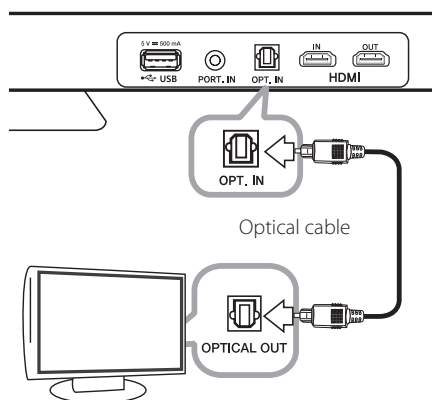
Connecting

## Connecting to your TV

Please connect with this unit and TV using the optical digital cable or HDMI cable considering the state of the TV.

### Using an OPTICAL cable

1. Connect the OPT. IN jack on the back of the unit to OPTICAL OUT jack on the TV using an OPTICAL cable.

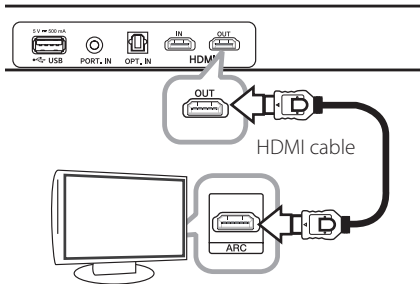


2. Set the INPUT source to OPTICAL. Press repeatedly **FUNCTION** on the remote control or **F** on the unit until the function is selected.

For selecting directly the OPTICAL function, press **OPTICAL** on the remote control.

## Connecting with this unit and TV using an HDMI cable

If you connect with this unit and TV that supports HDMI CEC and ARC (Auto Return Channel), you can enjoy the TV sound through the speakers of this unit without connecting optical cable.



### ! Note

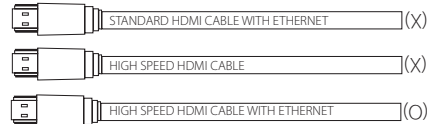
HDMI CEC (Consumer Electronic Control) :  
With a single remote control is the ability to operating. The CEC compatible devices (TV, Sound Bar, Blu-ray player, etc.)

## HDMI cable Checklist

Some HDMI cables do not support the ARC function, sound output can cause problems.

When connecting this unit and the TV there is no sound or sound in the event of interruption and noise, there is a problem with the HDMI cable.

Therefore connect with this unit and TV after check whether the Type A, High speed HDMI TM Cable with Ethernet.



## Enjoy rich sound broadcast of the channel by the sound bar

### Connection through HDMI Cable

Your television that you own should support the newest HDMI features (<sup>1)</sup>HDMI CEC / ARC (Audio Return Channel)) to fully enjoy the Live broadcasting channel with audio system through a HDMI cable. Unless your TV support these HDMI features, this audio system should be connected through an OPTICAL cable instead of a HDMI cable to your TV to enjoy the sound of TV channel.

1) HDMI CEC (High-Definition Multimedia Interface Consumer Electronics Control)

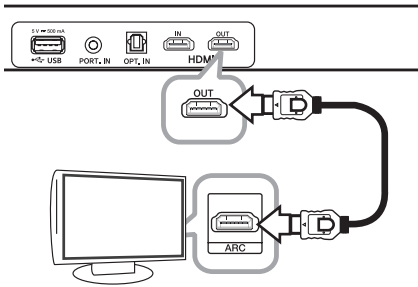
Consumer Electronics Control (CEC) is an HDMI feature designed to allow the user to command and control the CEC-enabled devices, that are connected through HDMI by using only one of their remote controls.

※ Trade names for CEC are SimpLink G), Anynet+ (Samsung), BRAVIA Sync (Sony), EasyLink (Philips), etc.

## 1. Link the devices through HDMI Cable

TV : HDMI IN (ARC) port

Audio : HDMI OUT port



## 2. Activate ARC mode

TV : Setup > Audio or Sound > ARC mode (must be ON)



### ! Note

All of the graphical user Interface (GUI) and accessing steps (Step 02 > Step 03) to activate the ARC / HDMI CEC would be different depending on TV manufacture.

Refer to your TV User Manual for in-depth information.

## 3. Select the Speaker

TV : Press 'Input' button on your TV remote control  
> HDMI CEC : should be ON > Select your speaker that you want to enjoy.

※ LG TV : Press 'Input' or 'Simplink' button on your TV remote. > Simplink must be 'ON' at Simplink setting > Change the speaker from 'TV Speaker' to 'HT(S) Speaker' or 'External Speaker (Optical / HDMI ARC)'



### ! Note

All of the graphical user Interface (GUI) and accessing steps (Step 02 > Step 03) to activate the ARC / HDMI CEC would be different depending on TV manufacture.

Refer to your TV User Manual for in-depth information.

You can also enjoy extra functions such as USB / Bluetooth with 'Function' button on remote control of this audio system. When you back to live TV channel after using the extra functions (USB / Bluetooth) of this audio system, you should choose your preferred speaker you want to enjoy the sound from this audio system again. (Refer to Step 03 Select the Speaker)

## ARC (Audio Return Channel) function

The ARC function enables an HDMI capable TV to send the audio stream to HDMI OUT of the unit.

To use this function :

- Your TV must support the HDMI-CEC and ARC function and the HDMI-CEC and ARC must be set to On.
- The setting method of HDMI-CEC and ARC may differ depending on the TV. For details about ARC function, refer to your TV manual.
- You must use the HDMI cable (Type A, High Speed HDMI™ cable with Ethernet).
- You must connect the HDMI OUT on the unit with HDMI IN of the TV that supports ARC function using an HDMI cable.
- You can connect only one Sound bar to TV compatible with ARC.

## Additional information for HDMI

- When you connect a HDMI or DVI compatible device make sure of the following:
  - Try switching off the HDMI/DVI device and this player. Next, switch on the HDMI/DVI device and leave it for around 30 seconds, then switch on this player.
  - The connected device's video input is set correctly for this unit.
  - The connected device is compatible with 720 x 576p, 1280 x 720p, 1920 x 1080i or 1920 x 1080p video input.
- Not all HDCP-compatible HDMI or DVI devices will work with this player.
  - The picture will not be displayed properly with non-HDCP device.



### ! Note

- If a connected HDMI device does not accept the audio output of the player, the HDMI device's audio sound may be distorted or may not output.
- Changing the resolution when the connection has already been established may result in malfunctions. To solve the problem, turn off the player and then turn it on again.
- When the HDMI connection with HDCP is not verified, TV screen is changed to black screen. In this case, check the HDMI connection, or disconnect the HDMI cable.
- If there are noises or lines on the screen, please check the HDMI cable (length is generally limited to 4.5 m(15 ft).
- You cannot change the video resolution in the HDMI IN mode. Change the video resolution of the connected component.
- If the video output signal is abnormal when your personal computer is connected to HDMI IN jack, change the resolution of your personal computer to 576p, 720p, 1080i or 1080p.

## What is SIMPLINK?



Some functions of this unit are controlled by the TV's remote control when this unit and LG TV's with SIMPLINK are connected through HDMI connection.

Controllable functions by LG TV's remote control :  
Power on/off, volume up/down, etc.

Refer to the TV owner's manual for the details of SIMPLINK function.

LG TV's with SIMPLINK function has the logo as shown above.

### ! Note

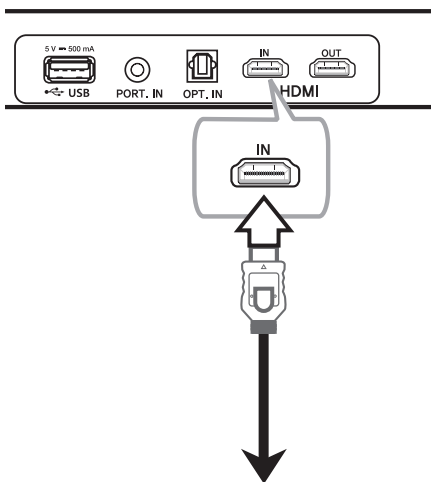
Depending on the state of the unit, some SIMPLINK operation may differ from your purpose or not work.

## Optional equipment connection

### HDMI connection

#### For enjoying sound only

You can enjoy the sound from the external device you connect.

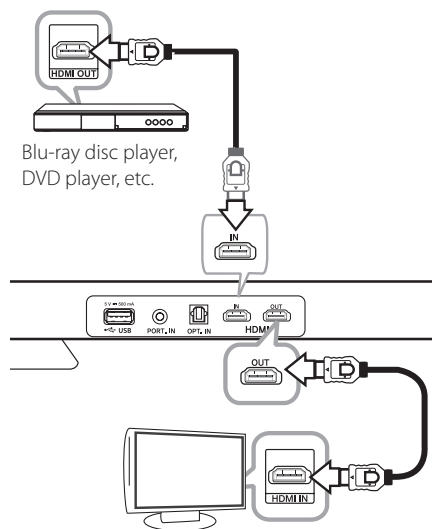


To the Blu-ray disc player,  
DVD player, etc.

1. Connect HDMI IN jack on the back of the unit to HDMI OUT jack on the audio device such as Blu-ray disc player, DVD player, etc.
2. Set the INPUT source to HDMI IN. Press repeatedly **FUNCTION** on the remote control or **F** on the unit until the function is selected.

#### For enjoying both sound and picture

You can enjoy both sound and picture from the external device you connect.

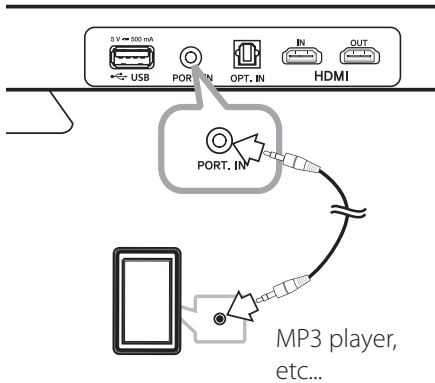


1. Connect HDMI IN jack on the back of the unit to HDMI OUT jack on the external device such as Blu-ray disc player, DVD player, etc.
2. Connect HDMI OUT jack on the back of the unit to HDMI IN jack on the TV.
3. Set the INPUT source to HDMI IN. Press repeatedly **FUNCTION** on the remote control or **F** on the unit until the function is selected.

#### Note

- With the unit connected to external devices and TV as above illustration, TV will output picture and sound from external devices when the unit is turned off in HDMI IN mode.
- Even though PCM multi channel is inputted to the unit through an HDMI cable, the unit can only output 2 channel.

## PORT. (Portable) IN connection



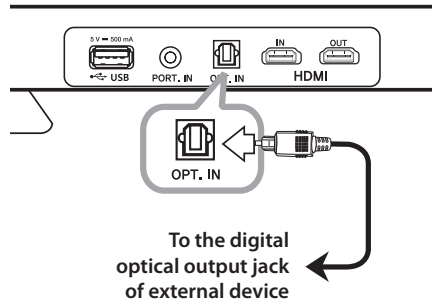
## Listening to music from your portable player

The unit can be used to play the music from many types of portable players or external devices.

1. Connect the portable player to the PORT. (Portable) IN connector of the unit.
2. Turn the power on by pressing **⏻** (Power).
3. Select the PORTABLE function by pressing **FUNCTION**.
4. Turn on the portable player or external device and start playing it.

## OPTICAL IN connection

Connect an optical output jack of external devices to the OPT. IN jack.



## Speaker ez (easy) setup

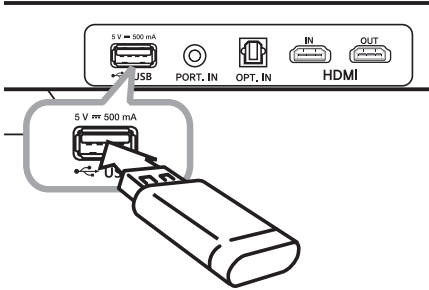
Listens to sound from TV, DVD or Digital Device with 2.1 or 2ch mode.

1. Connect the OPT. IN jack on the back of the unit to optical out jack of your TV (or digital device etc.)
2. Select the input source to OPTICAL directly by pressing **OPTICAL**.
3. Listen to sound with 2.1 or 2ch speaker.
4. Press **OPTICAL** to exit from OPTICAL. Function is returned to previous one.


## USB playback

Connect USB memory device to the USB port on the back of the unit.

With the unit on the wall, you can connect USB more easily using supplied USB cable.



Removing the USB Device from the unit.

1. Choose a different function/mode or press  twice in a row.
2. Remove the USB device from the unit.

## Playable file

### MP3/ WMA file requirement

MP3/ WMA file compatibility with this unit is limited as follows :

- Sampling frequency : within 32 to 48 kHz (MP3), within 32 to 48 kHz (WMA)
- Bit rate : within 32 to 320 kbps (MP3), 40 to 192 kbps (WMA)
- Maximum files : Under 999
- File extensions : ".mp3"/".wma"
- A protected file by DRM(Digital rights management) cannot be played on the unit.
- Video files in the USB storage device can not be played.

## Compatible USB devices

- MP3 Player : Flash type MP3 player.
- USB Flash Drive : Devices that support USB1.1.
- The USB function of this unit does not support some USB devices.

## USB device requirement

- Devices which require additional program installation connected to a computer, are not supported.
- Do not extract the USB device while in operation.
- For a large capacity USB, it may take longer than a few minutes to be searched.
- To prevent data loss, back up all data.
- This unit is not supported when the total number of files is 1000 or more.
- The unit's USB Port cannot be connected to PC. The unit can not be used as a storage device.
- The exFAT file system is not supported on this unit.
- Depending on some devices, it may not available to recognize the followings on this unit.
  - External HDD
  - Card readers
  - Locked devices
  - Hard type USB devices
  - USB hub
  - Using USB extension cable

## Basic operations

### USB operation

1. Connect the USB device to the USB port.
2. Select the USB function by pressing **FUNCTION**.
3. Select a file you want to play by pressing **◀◀** or **▶▶**.

To	Do this
Stop	Press <b>■</b> .
Playback	Press <b>▶/II</b> .
Pause	During playback, press <b>▶/II</b> .
Skip to the next/ previous file	During playback, press <b>◀◀</b> or <b>▶▶</b> to go to the next file or to return to the beginning of the current file. Press <b>◀◀</b> twice briefly to step back to the previous file.
Search for a section within a file	Press and hold <b>◀◀/▶▶</b> during playback and release it at the point you want to listen to.
Play repeatedly or randomly	Press <b>REPEAT</b> on the remote control repeatedly, the display will be changed in the following order, RPT 1 → RPT DIR (DIRECTORY) → RPT ALL → RANDOM → OFF.
Select a file directly	Press <b>0</b> to <b>9</b> numerical buttons on the remote control to go to the desired file directly.
Resume playback	The unit memorizes the point at which you've changed function or the unit had been turned off.

#### ! Note

The resume point may be cleared when you pull out the power cord or removing the USB device from the unit.

## Other operations

### DRC (Dynamic Range Control)

Make the sound clear when the volume is turned down (Dolby Digital only). Set to [DRC ON] by using **DRC**.

### AV Sync

When receiving audio signals from TV, sound and images may not be matched. In the case, this function can adjust the delay time.

1. Press **AV SYNC**.
2. Use **◀◀/▶▶** to scroll up and down through the delay amount, which you can set at anything between 0 and 300ms.

### Turn off the sound temporarily

Press **MUTE**  to mute your unit.

You can mute your unit, for example, to answer the telephone, "MUTE" is displayed in the display window.

To cancel it, press **MUTE**  again on the remote control or change the volume level.

### Displaying file and input source

You can display various information of the input source by pressing **INFO**.

USB : MP3/WMA containing file information  
OPTICAL/ARC/HDMI IN : Audio format, Audio channel

## AUTO POWER On/Off

Before operating this function, make sure that you have selected OPTICAL and turn on the AUTO POWER.

This function automatically turns on/off the unit when you turn on/off the external device (TV, DVD Player, Blu-ray Disc Player, etc.) connected to this unit by the optical cable.

When turning on the unit by this function, Optical function is selected directly no matter what kind of function has been selected before turning off it.

This function turns on or off each time you press **AUTO POWER**.

Display	Operation
AUTO POWER ON	AUTO POWER function is turned on.
AUTO POWER OFF	AUTO POWER function is turned off.

### ! Note

- This function is intentionally designed to turn off the unit after 1 minute of inactivity in OPTICAL mode. Only if the unit has already received the signal transmitted through the optical source and there is no digital audio signal going to the unit, the unit will turn off after 1 minute of inactivity with AUTO POWER function is turned on.
- Depending on the connected device by the optical cable, this function may not operate.
- If you want to use AUTO POWER, SIMPLINK must be turned off. It takes for about 30 seconds to switch on or off SIMPLINK.
- If SIMPLINK is set to ON, "AUTO POWER OFF" is just scrolled, even though you press **AUTO POWER**.
- Once AUTO POWER is set, the unit will start as OPTICAL mode automatically next time, no matter what kind of function you selected before.
- It is not available to turn on the unit by AUTO POWER function if you turn off the unit directly.
- AUTO POWER function is not supported on LG Sound Sync (Wireless) mode.

## Auto power down

This unit will be off itself to save electric consumption in the case main unit is not connected to external device and is not used for 20 minutes.

So does this unit after six hours since Main unit has been connected to other device using analog input.

But the unit can turn on automatically based on the [AUTO POWER] function you've set.

## Sleep timer setting

Press **SLEEP** repeatedly to select the desired time period options (in minutes):

LCD OFF(Display window off) -> DIMMER(The display window will be darkened by half) -> Sleep timer value -> Display on

In display window you see "LCD OFF" and the display window turns off.

To check the remaining time, press **SLEEP**.

To cancel the sleep function, press **SLEEP** repeatedly until "SLEEP 10" appears, and then press **SLEEP** once again while "SLEEP 10" is displayed.

### ! Note

You can check the remaining time before the unit turns off. Press **SLEEP** the remaining time appears in the display window.

## LG Sound Sync



You can control some functions of this unit by your TV's remote control with LG Sound Sync. It is compatible with the LG TV that is supported LG Sound Sync. Make sure of the LG Sound Sync logo on your TV.

Controllable function by LG TV's remote control :  
Volume up/down, mute

Refer to the TV's instruction manual for the details of LG Sound Sync.

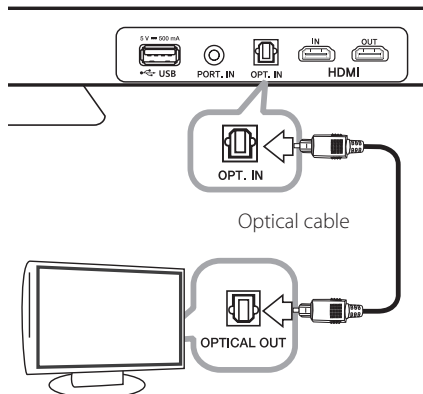
Make one of the following connections, depending on the capabilities of your equipment.

### ! Note

- You can also use the remote control of this unit while using LG Sound Sync. If you use TV's remote control again, the unit synchronizes with the TV.
- When the connections failed, make sure of the condition of the TV and power of it.
- Make sure of the condition of this unit and the connection in the cases below when using LG Sound Sync.
  - Turned off the unit.
  - Changing the function to the others.
  - Disconnecting the optical digital audio cable.
  - Disconnecting the wireless connection caused by interference or a distance.

## With wired connection

1. Connect your LG TV to the unit by using an optical digital cable.



2. Set up LG Sound Sync (Optical) on the TV. Refer to the TV's instruction manual.
3. Turn on the unit.
4. Select OPTICAL function.

You can see "LG OPT" on the display window if connecting normally between this unit and your TV.

### ! Note

The amount of time to turn off this unit is different depending on your TV when you set AUTO POWER function to ON.

### With wireless connection

1. Set up LG Sound Sync (Wireless) on the TV. Refer to the TV's instruction manual.
2. Turn on the unit.
3. Select LG TV function.

"PAIRED" appears on the display window for about 3 seconds and then you can see "LG TV" on the display window if connecting normally between this unit and your TV.

#### ! Note

Once LG TV function is selected, the unit connects automatically the TV which is connected lately when restarting.

3

Operating

## Using Bluetooth technology

### About Bluetooth

**Bluetooth®** is wireless communication technology for short range connection.

The available range is within 10 meters.

(The sound may be interrupted when the connection interfered by the other electronic wave or you connect the bluetooth in the other rooms.) Connecting individual devices under

**Bluetooth®** wireless technology does not incur any charges. A mobile phone with

**Bluetooth®** wireless technology can be operated via the Cascade if the connection was made via **Bluetooth®** wireless technology.

Available Devices : Mobile phone, MP3, Laptop, PDA (This units be supported the Stereo Headset.)

### Bluetooth Profiles

In order to use Bluetooth wireless technology, devices must be able to interpret certain profiles. This unit is compatible with following profile.

A2DP (Advanced Audio Distribution Profile)



## Listening to music stored on the Bluetooth devices

### Pairing your unit and Bluetooth device

Before you start the pairing procedure, make sure the Bluetooth feature is turned on in your Bluetooth device. Refer to your Bluetooth device's user guide. Once a pairing operation is performed, it does not need to be performed again.

1. Select the Bluetooth function by using the **FUNCTION**.  
Appears "BT" and then "BT READY" in display window.
2. Operate the Bluetooth device and perform the pairing operation. When searching for this unit with the Bluetooth device, a list of the devices found may appear in the Bluetooth device display depending on the type of Bluetooth device. Your unit appears as "LG SOUND BAR".
3. Enter the PIN code.  
PIN code : 0000
4. When this unit is successfully connected with your Bluetooth device, "PAIRED" will appear on the display window.

#### **Note**

Depending on the Bluetooth device type, some device have a different pairing way.

5. Listen to music.  
To play a music stored on your Bluetooth device, refer to your Bluetooth device's user guide.

#### **Note**

- You should connect your Bluetooth device to this unit again when you restart it.
- The unit connects automatically the Bluetooth device which is connected lately when you select Bluetooth function again after changing to the other functions.
- The sound may be interrupted when the connection interfered by the other electronic wave.
- You cannot control the Bluetooth device with this unit.
- Pairing is limited one Bluetooth device per one unit and multi-pairing is not supported.
- Although the distance between your Bluetooth and the set is less than 10m, there are obstacles between both, your Bluetooth device cannot be connected.
- Depending on the type of the device, you may not be able to use the Bluetooth function.
- You can enjoy wireless system using phone, MP3, Notebook, etc..
- When not connected the Bluetooth, "BT READY" appears on the display window.
- The Electrical malfunction due to devices using same frequency such as Medical equipment, Microwaves or wireless LAN devices, the connection will be disconnected.
- When someone stands and interrupts communication between Bluetooth device and the player, the connection will be disconnected.
- If the gotten away of the distance between Bluetooth and the unit, the sound quality is lower and lower the connection will disconnect when the space between the Bluetooth and the unit gets out of the operating range of Bluetooth.
- The device with Bluetooth wireless technology is disconnected, if you turn off the main unit or put the device away from the main unit more than 10m.

## Sound adjustment

### Setting the surround mode

This system has a number of pre-set surround sound fields. You can select a desired sound mode by using **SOUND EFFECT**.

The displayed items for the equalizer may be different depending on sound sources and effects.

#### Note

- In some of surround modes, some speakers, there's no sound or low sound. It depends on the mode of surround and the source of audio, it is not defective.
- You may need to reset the surround mode, after switching the input, sometimes even after the sound file changed.

3

Operating

On Display	Description
NATURAL	You can enjoy comfortable and natural sound.
BYPASS	You can enjoy the sound without equalizer effect.
BASS	The BASS is Bass Blast. During playback, reinforce the treble, bass and surround sound effect.
CLRVOICE	The CLRVOICE is Clear Voice. This program make voice sound clear, improving the quality of voice sound.
GAME	The GAME is Game Equalizer. You can enjoy more virtual sound while playing video games.
NIGHT	The NIGHT is Night Mode. This may be useful when you want to watch movies at low volume late at night.
UPSCALER	The UPSCALER is MP3 Up-Scaling. When listening to MP3 files or other compressed music, you can enhance the sound. This mode is available only to 2 channel sources.
LOUDNESS	Improves the bass and treble sound.
3D SOUND	You can enjoy more immersive and cinematic surround sound.

### Auto volume On/Off

This unit supports Auto volume function that automatically adjusts the volume level.

When the output sound is too loud or too low, press **AUTO VOLUME** on the remote control. So you can enjoy the sound with appropriate levels.

To cancel this function, press the button again.

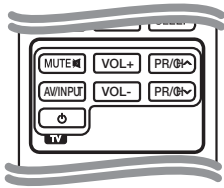
### Adjust the woofer level settings

You can adjust the sound level of woofer.

1. Press **WOOFER LEVEL**.
2. Press **VOL +/-** to adjust the sound level of the woofer.

# Controlling a TV with the supplied remote control

You can control your TV using the buttons below.



Button	Operation
<b>MUTE</b>	Turn the TV's volume on or off.
<b>AV/INPUT</b>	Switch the TV's input source between the TV and other input sources.
(TV POWER)	Turn the TV on or off.
<b>VOL +/-</b>	Adjust the volume of the TV.
<b>PR/CH <math>\wedge</math> / <math>\vee</math></b>	Scan up or down through memorized channels.

## ! Note

- Depending on the TV being connected, you may not be able to control your TV using some of the buttons.
- The remote control of the unit performs basic operation of your TV. Please use the TV's remote control to enjoy advanced operation of your TV.

# Setting up the remote to control your TV

You can operate your TV with the supplied remote control.

If your TV is listed in the table below, set the appropriate manufacturer code.


- While holding down (TV POWER) button, and press the manufacturer code for your TV with the numerical buttons (see the table below).

Manufacturer	Code Number
LG	1 (Default), 2
Zenith	1, 3, 4
GoldStar	1, 2
Samsung	6, 7
Sony	8, 9
Hitachi	4

- Release the (TV POWER) button to complete setting.

Depending on your TV, some or all buttons may not function on the TV, even after entering the correct manufacturer code. When you replace the batteries of the remote, the code number you have set may be reset to the default setting. Set the appropriate code number again.

## Troubleshooting

PROBLEM	CAUSE & CORRECTION
No Power	<ul style="list-style-type: none"> <li>The power cord is unplugged. Plug in the power cord.</li> <li>Check the condition by operating other electronic devices.</li> </ul>
No sound	<ul style="list-style-type: none"> <li>Incorrect input source is selected. Check the input source and select the correct input source.</li> <li>The mute function is activated. Press <b>MUTE</b>  or adjust the volume level to cancel the mute function.</li> </ul>
No display	<ul style="list-style-type: none"> <li>The LCD OFF function is activated. Press <b>SLEEP</b> to cancel the function.</li> </ul>
The remote control does not work properly.	<ul style="list-style-type: none"> <li>The remote control is too far from the unit. Operate the remote control within about 23 ft (7m).</li> <li>There is an obstacle in the path of the remote control and the unit. Remove the obstacle.</li> <li>The batteries in the remote control is exhausted. Replace the batteries with new one.</li> </ul>
The AUTO POWER function does not work.	<ul style="list-style-type: none"> <li>Check the state of SIMPLINK and turn off SIMPLINK.</li> <li>Depending on the connected device by the optical cable, this function may not operate.</li> </ul>
When you sense that outputted sound of the unit is low.	<p>Check the details below and adjust the unit according to them.</p> <ul style="list-style-type: none"> <li>Switch [ON] state of DRC function to [OFF] by using remote controller.</li> <li>With the sound bar connected with TV, change the AUDIO DIGITAL OUT setting on TV Setup Menu from [PCM] to [AUTO] or [BITSTREAM].</li> <li>With the sound bar connected with Player, change the AUDIO DIGITAL OUT setting on Player Setup Menu from [PCM] to [PRIMARY PASS-THROUGH] or [BITSTREAM].</li> <li>Change Audio DRC setting on Player setup menu to [OFF] state.</li> </ul>

## Trademarks and licenses



Manufactured under license from Dolby Laboratories. Dolby and the double-D symbol are trademarks of Dolby Laboratories.



Manufactured under license under U.S. Patent Nos: 5,956,674; 5,974,380; 6,487,535 & other U.S. and worldwide patents issued & pending. DTS, the Symbol, & DTS and the Symbol together are registered trademarks & DTS 2.0 Channel is a trademark of DTS, Inc. Product includes software. © DTS, Inc. All Rights Reserved.



Bluetooth® wireless technology is a system which allows radio contact between electronic devices within a max. range of 10 meters.

Connecting individual devices under Bluetooth® wireless technology does not incur any charges. A mobile phone with Bluetooth® wireless technology can be operated via the Cascade if the connection was made via Bluetooth® wireless technology.



The Bluetooth® word mark and logos are owned by the Bluetooth® SIG, Inc. and any use of such marks by LG Electronics is under license.

Other trademarks and trade names are those of their respective owners.



HDMI, the HDMI logo and High-Definition Multimedia Interface are trademarks or registered trademarks of HDMI licensing LLC.

## Specifications

General	
AC adapter requirements	AC 100 - 240 V, 50 / 60 Hz
Power consumption	25 V  2 A
Dimensions (W x H x D)	(1038 x 35.4 x 75) mm
Net Weight (Approx.)	2.3 kg
Operating temperature	41 °F to 95 °F (5 °C to 35 °C)
Operating humidity	5 % to 90 %
Bus Power Supply	5 V  500 mA

Input/Output	
OPTICAL IN	3 V (p-p), Optical jack x 1
PORT. IN	0.5 Vrms (3.5 mm stereo jack)
HDMI IN	19 Pin (Type A, HDMI™ connector) x 1
HDMI OUT	19 Pin (Type A, HDMI™ connector) x 1

Amplifier	
Stereo mode	80 W + 80 W (4 Ω at 1 kHz)

Wireless subwoofer	
Power requirements	AC 200 - 240 V, 50 - 60 Hz
Power consumption	35 W
Type	1 Way 1 Speaker
Impedance Rated	3 Ω
Output Power	150 W
Max. Output Power	300 W
Net Dimensions (W x H x D)	(221 x 351.5 x 281) mm
Net Weight	7.32 kg

Designs and specifications are subject to change without prior notice.

# Maintenance

## Handling the unit

### When shipping the unit

Please save the original shipping carton and packing materials. If you need to ship the unit, for maximum protection, re-pack the unit as it was originally packed at the factory.

Keeping the exterior surfaces clean

- Do not use volatile liquids such as insecticide spray near the unit.
- Wiping with strong pressure may damage the surface.
- Do not leave rubber or plastic products in contact with the unit for a long period of time.

### Cleaning the unit

To clean the player, use a soft, dry cloth. If the surfaces are extremely dirty, use a soft cloth lightly moistened with a mild detergent solution. Do not use strong solvents such as alcohol, benzine, or thinner, as these might damage the surface of the unit.

