

3D Blu-ray™ / DVD Home Theater System

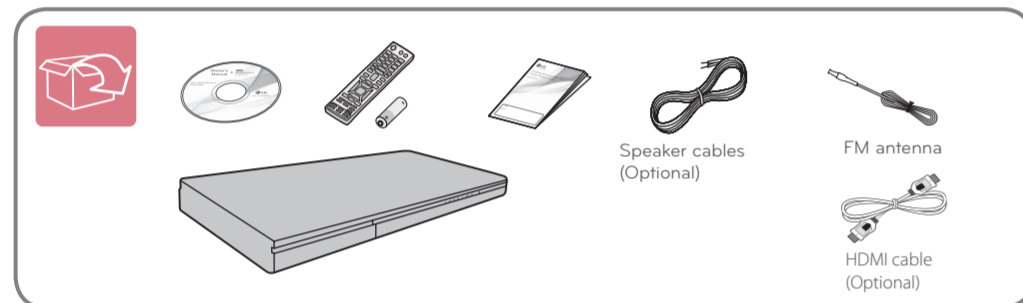
BH6730T, BH6730P, BH6730S, BH6530T,
BH6430P, BH6330H, BH6230S

ENGLISH | SIMPLE MANUAL

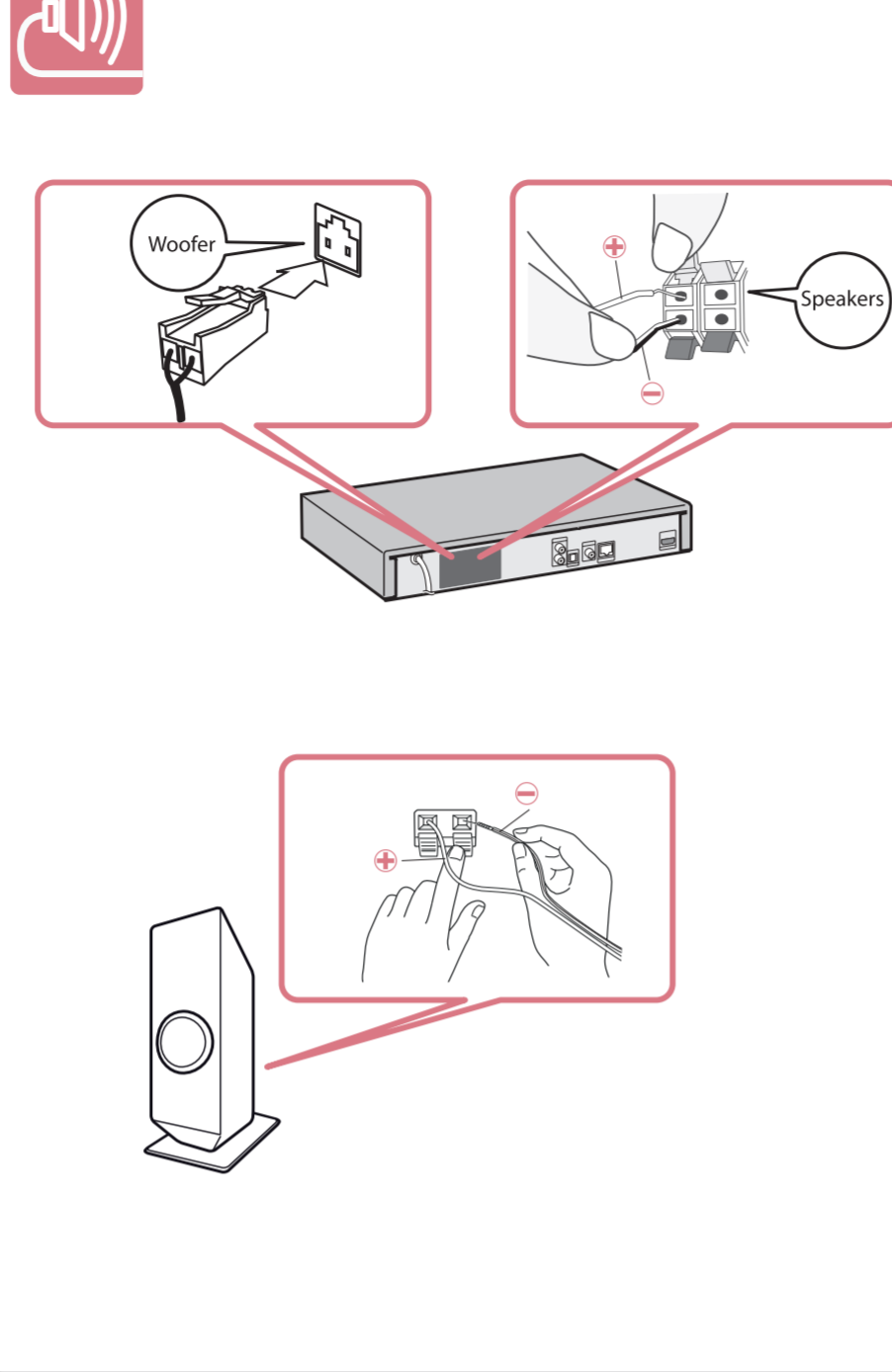
An extended Owner's Manual that contains information on the advanced features is located on the CD-ROM provided in an electronic version. To read these files, you will need to use a Personal Computer (PC) equipped with a CD-ROM drive.

FRANÇAIS | MANUEL SIMPLE

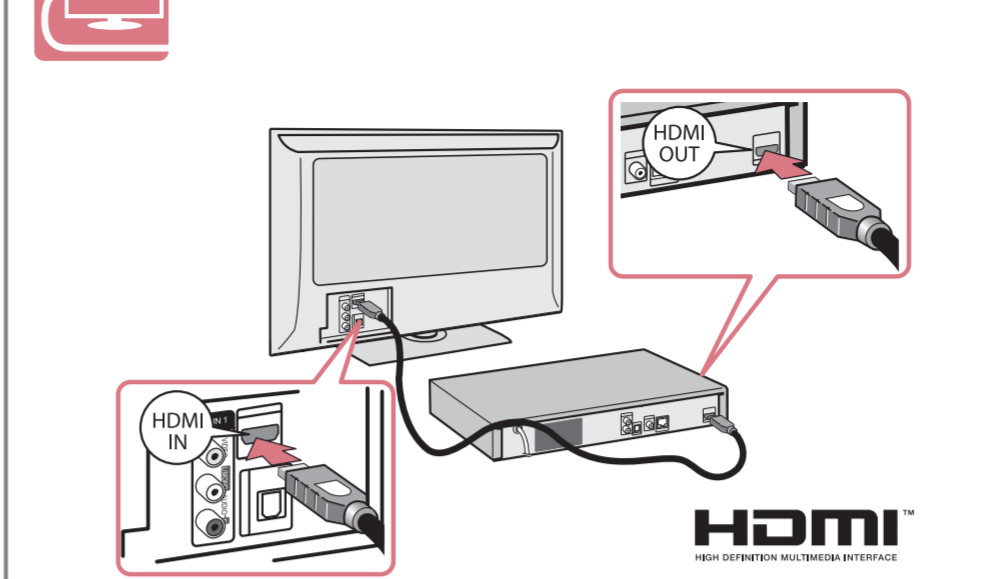
Un Manuel d'Utilisation étendu en version électronique qui contient des informations sur les fonctionnalités avancées est situé sur le CD-ROM fourni. Pour lire ces fichiers, vous aurez besoin d'utiliser un Ordinateur Personnel (PC) avec un lecteur de CD-ROM.



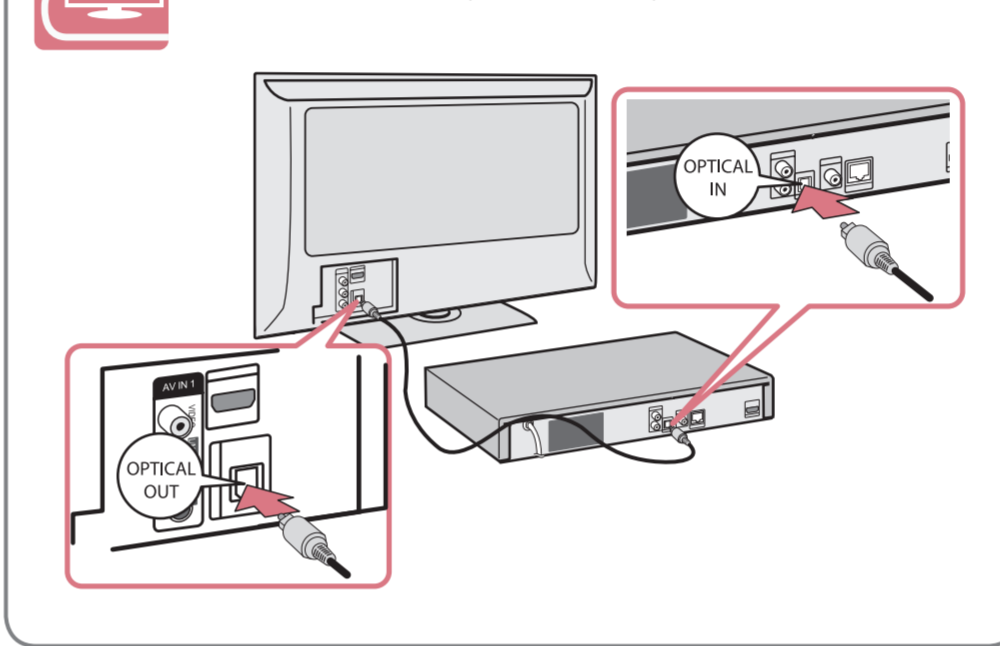
Speaker Connection / Raccordement des enceintes



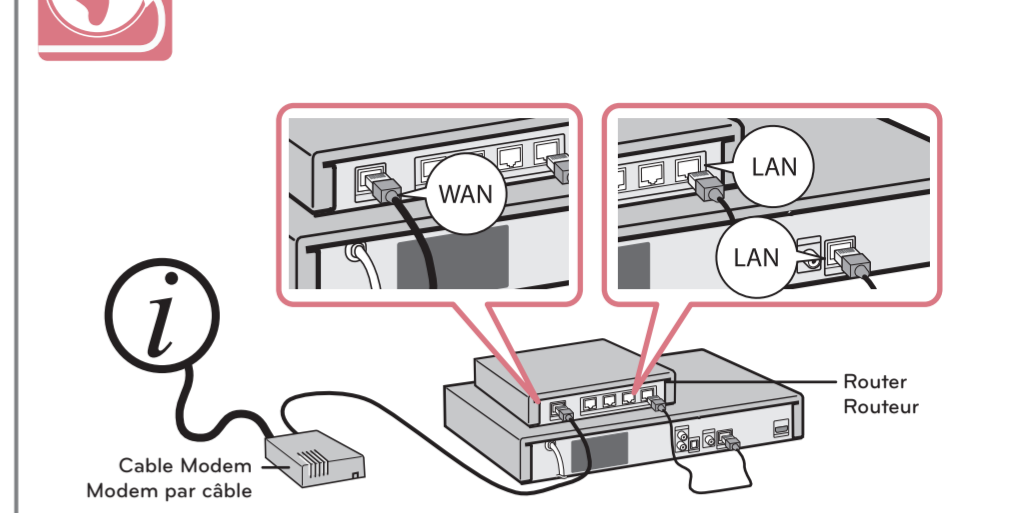
TV Connection (HDMI OUT) / Raccordement télé (HDMI OUT)



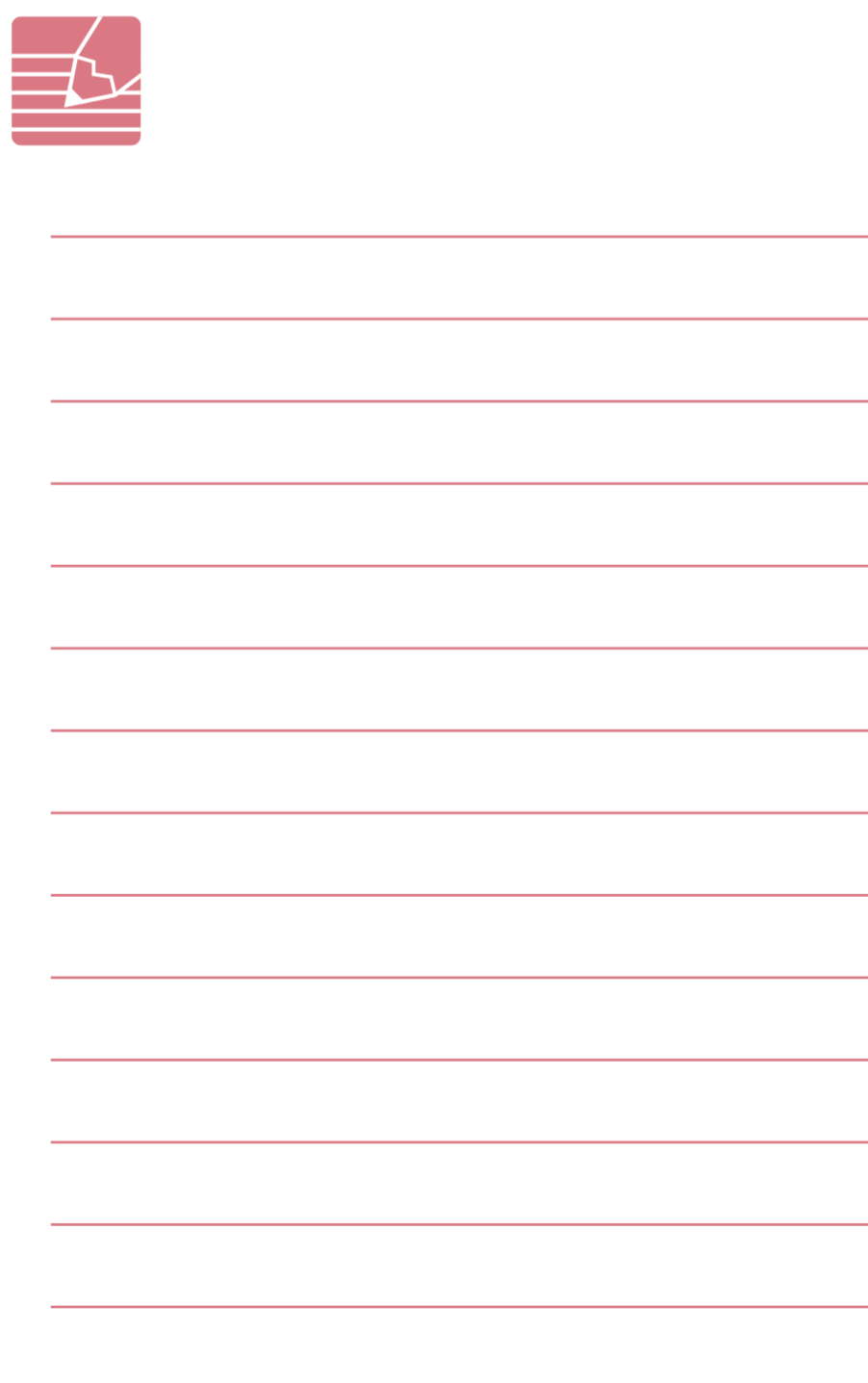
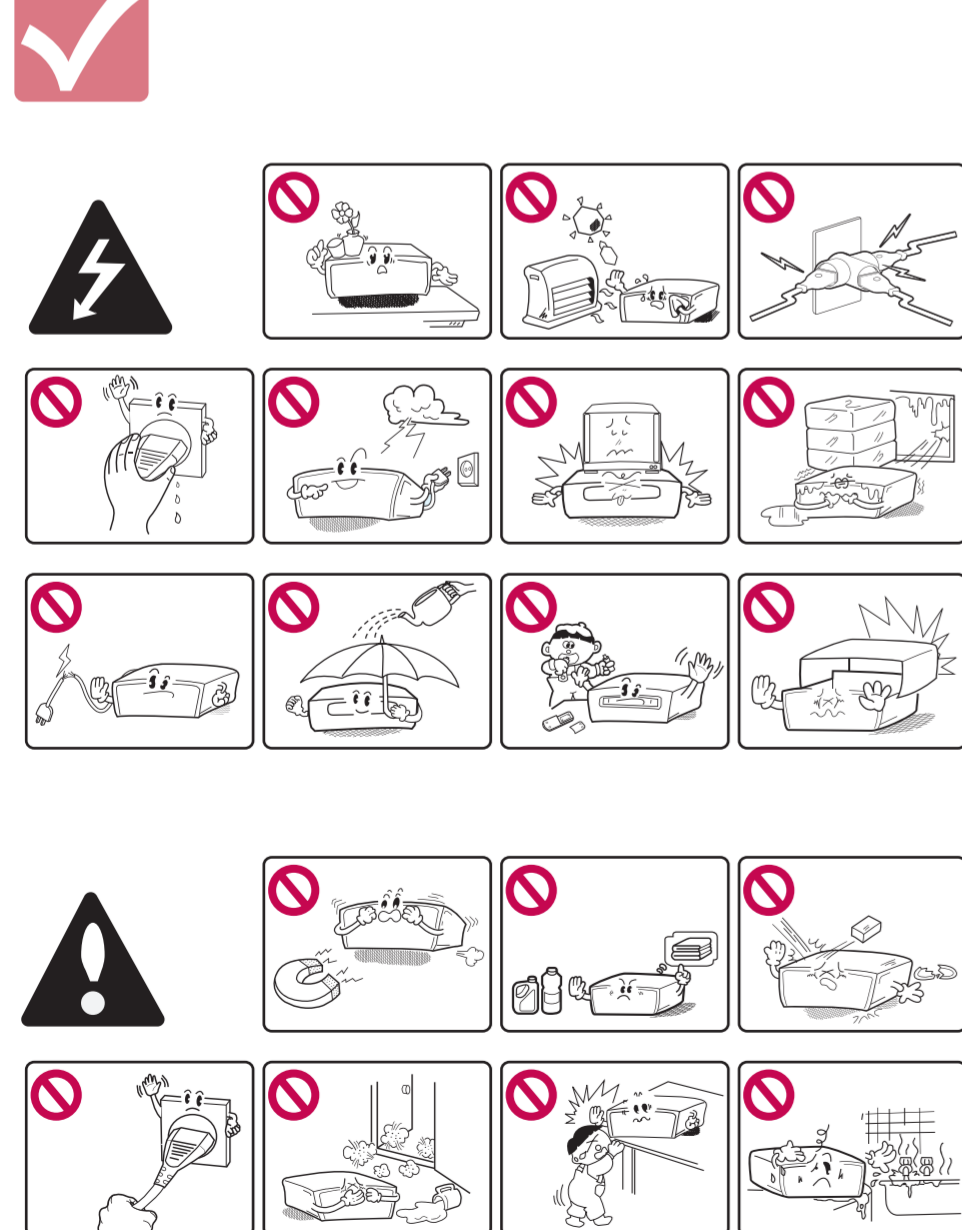
TV Connection (OPTICAL IN) / Raccordement télé (OPTICAL IN)



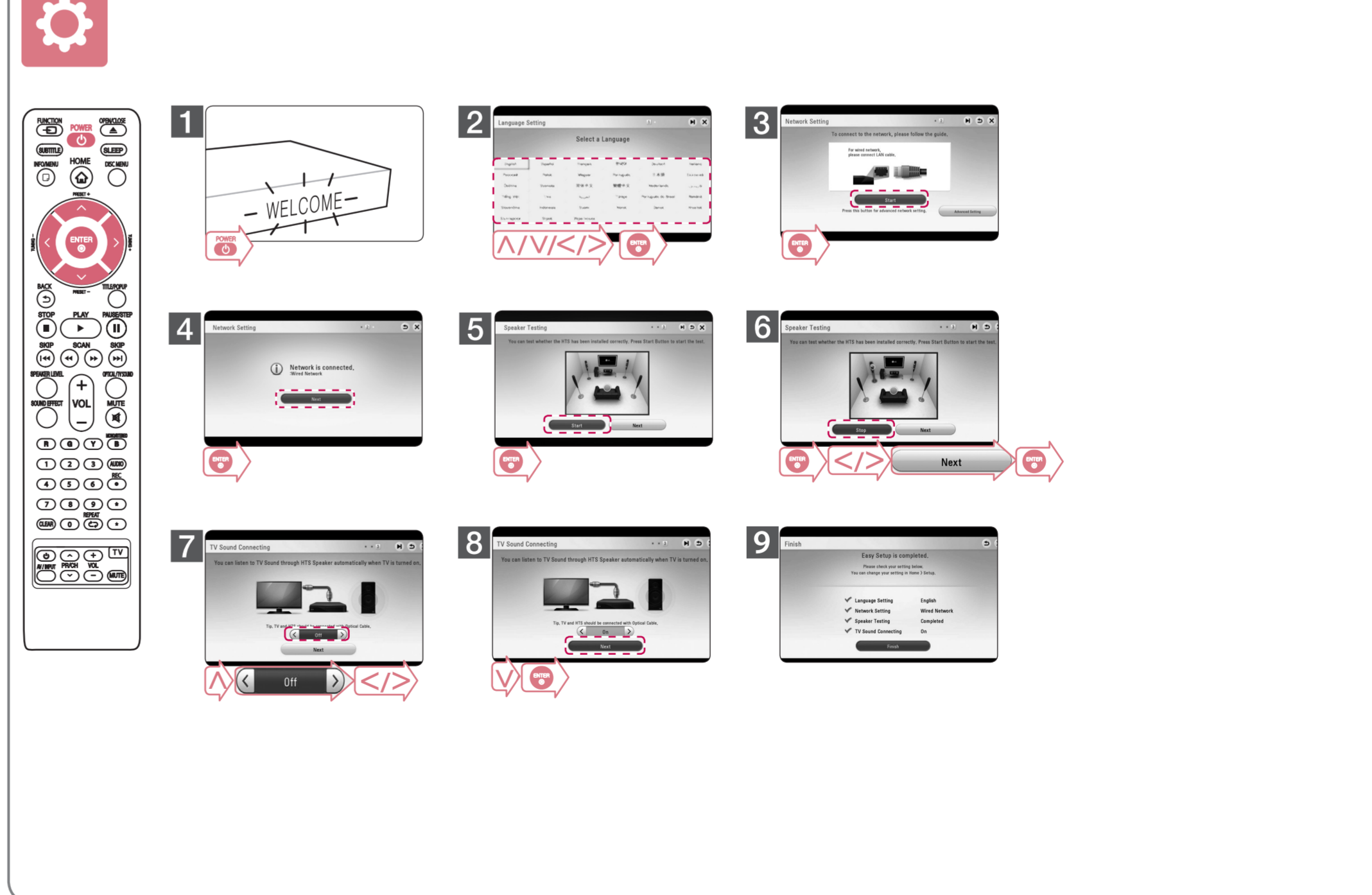
Wired Network Connection / Connexion à un réseau filaire



Safety Information / Consignes de sécurité



Initial Setup / Installation initiale



Using HOME menu / Utilisant le menu ACCUEIL

[Premium] - Displays the Premium Home screen.
[Premium] - Permet d'afficher l'écran d'accueil Premium.

[Smart Share] - Displays Smart Share menu.
[Smart Share] - Affiche le menu de partage intelligent.

[LG Smart World] - Displays LG Apps titles provided to the unit.
[LG Smart World] - Affiche les titres des LG Apps offertes à l'appareil.

[Input] - Changes input mode.
[Entrée] - permet de modifier la source d'entrée.

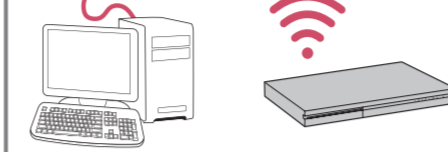
[Settings] - Adjusts the system settings.
[Paramètres] - Règle les paramètres du système.

[My Apps] - Displays the [My Apps] screen.
[Mes Applications] - Affiche l'écran [Mes Applications].

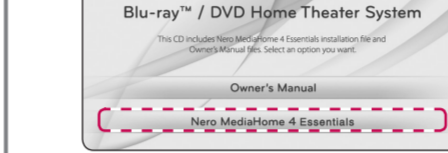
To Use Network Playback / Pour utiliser la lecture en réseau

Preparation / Préparation

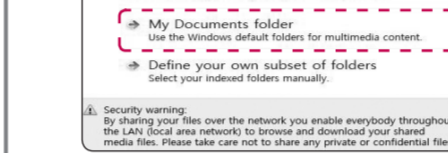
Check the network connection and settings. / Vérifier la connexion et les paramètres réseau.



1. Install Nero MediaHome 4 Essentials program on your PC. / Installez le programme Nero MediaHome 4 Essentials sur votre ordinateur.



2. Run the program, and set the share folder you want. / Installez le programme Nero MediaHome 4 Essentials sur votre ordinateur.



Smart Share Network Playback / Lecture réseau par partage intelligent

CAUTION RISK OF ELECTRIC SHOCK DO NOT OPEN

CAUTION: TO REDUCE THE RISK OF ELECTRIC SHOCK DO NOT REMOVE COVER (OR BACK) NO USER-SERVICEABLE PARTS INSIDE. REFER SERVICING TO QUALIFIED SERVICE PERSONNEL.

This lightning flash with arrowhead symbol within an equilateral triangle is intended to alert the user to the presence of uninsulated dangerous voltage within the product's enclosure that may be of sufficient magnitude to constitute a risk of electric shock to persons.

The exclamation point within an equilateral triangle is intended to alert the user to the presence of important operating and maintenance (servicing) instructions in the literature accompanying the product.

WARNING: DO NOT install this equipment in a confined space such as a book case or similar unit.

CAUTION: Do not block any ventilation openings. Install in accordance with the manufacturer's instructions.

Slots and openings in the cabinet are provided for ventilation and to ensure reliable operation of the product and to protect it from over heating. The openings shall never be blocked by placing the product on a bed, sofa, rug or other similar surface. This product shall not be placed in a built-in installation such as a bookcase or rack unless proper ventilation is provided or the manufacturer's instruction has been adhered to.

Use of controls, adjustments or the performance of procedures other than those specified herein may result in hazardous radiation exposure.

CAUTION concerning the Power Cord
 To disconnect power from the mains, pull out the mains cord plug. When installing the product, ensure that the plug is easily accessible.

CAUTION: The apparatus shall not be exposed to water (dripping or splashing) and no objects filled with liquids, such as vases, shall be placed on the apparatus.

This device is equipped with a portable battery or accumulator. **Safety way to remove the battery or the battery from the equipment:** Remove the old battery or battery pack, follow the steps in reverse order than the assembly. To prevent contamination of the environment and bring on possible threat to human and animal health, the old battery or the battery put in the appropriate container at designated collection points. Do not dispose of batteries or battery together with other waste. It is recommended that you use local, free reimbursement systems batteries and accumulators. The battery shall not be exposed to excessive heat such as sunshine, fire or the like.

Disposal of your old appliance

- When this crossed-out wheeled bin symbol is attached to a product it means the product is covered by the European Directive 2002/96/EC.
- All electrical and electronic products shall be disposed of separately from the municipal waste stream via designated collection facilities appointed by the government or the local authorities.
- The correct disposal of your old appliance will help prevent potential negative consequences for the environment and human health.
- For more detailed information about disposal of your old appliance, please contact your city office, waste disposal service or the shop where you purchased the product.

Disposal of waste batteries/accumulators

- When this crossed-out wheeled bin symbol is attached to batteries/accumulators of your product it means they are covered by European Directive 2006/66/EC.
- This symbol may be combined with chemical symbols for mercury (Hg), cadmium (Cd) or lead (Pb) if the battery Contains more than 0.0005% of mercury, 0.002% of cadmium or 0.004% of lead.
- All batteries/accumulators should be disposed separately from the municipal waste stream via designated collection facilities appointed by the government or the local authorities.
- The correct disposal of Your old batteries/accumulators will help to prevent potential negative consequences for the environment, animal and human health.
- For more detailed information about disposal of Your old batteries/accumulators, please contact Your city office, waste disposal service or the shop where you purchased the product.

For Wireless product European Union Notice

CE 0984

LG Electronics hereby declares that this/these product(s) is/are in compliance with the essential requirements and other relevant provisions of Directive 1999/5/EC, 2004/108/EC, 2006/95/EC, 2009/125/EC and 2011/65/EU.

Please contact to the following address for obtaining a copy of the DoC (Declaration of Conformity).

Contact office for compliance of this product:

LG Electronics Inc.
 EU Representative, Krijgsman 1,
 1186 DM Amstelveen, The Netherlands

Please note that this is NOT a Customer Service contact point. For Customer Service Information, see Warranty Card or contact the dealer that you purchased this product.

Indoor use only.

RF Radiation Exposure Statement

This equipment should be installed and operated with minimum distance 20 cm between the radiator and your body.

Disc Playback / Lecteur de disque

1. Disc Playback interface showing track information and playback controls.

2. Disc Playback interface showing track information and playback controls.

Data Playback / Lecteur de données

1. Data Playback interface showing file information and playback controls.

2. Data Playback interface showing file information and playback controls.

Specification / Spécifications

ENGLISH	
Power requirements	Refer to main label
Power consumption	Refer to main label
Dimensions (W x H x D)	Approx. 360 mm X 60.5 mm X 299 mm
Net Weight (Approx.)	2,7 kg
Bus Power Supply (USB)	5 V $\overline{\text{DC}}$ 2.1 A MAX
Design and specifications are subject to change without notice.	
FRANÇAIS	
Alimentation	Référez-vous à l'étiquette principale.
Consommation électrique	Référez-vous à l'étiquette principale.
Dimensions (L x H x P)	Approximativement 360 mm X 60,5 mm X 299 mm
Poids net (approx.)	2,7 kg
Bus Power Supply (USB)	5 V $\overline{\text{DC}}$ 2.1 A MAX
La conception et les spécifications sont sujettes à modification sans préavis.	

Some of the content in this manual may differ from your player depending on the software of the player or your service provider. / Certain du contenu dans ce manuel est susceptible d'être différent de votre lecteur selon le logiciel du lecteur ou votre fournisseur de service.

