

**3D Blu-ray™  
/ DVD Home  
Cinema System**

BH6240S, BH6340H,  
BH6440P, BH6540T

**ENGLISH | SIMPLE MANUAL**

An extended Owner's Manual that contains information on the advanced features is located on the CD-ROM provided in an electronic version. To read these files, you will need to use a Personal Computer (PC) equipped with a CD-ROM drive.

**DEUTSCH | KURZANLEITUNG**

Eine ausführliche Bedienungsanleitung mit Hinweisen zu erweiterten Funktionen befindet sich als elektronisches Dokument auf der enthaltenen CD-ROM. Zur Anzeige dieser Dateien wird ein Personal Computer (PC) mit CD-ROM-Laufwerk benötigt.

**FRANÇAIS | MANUEL SIMPLIFIÉ**

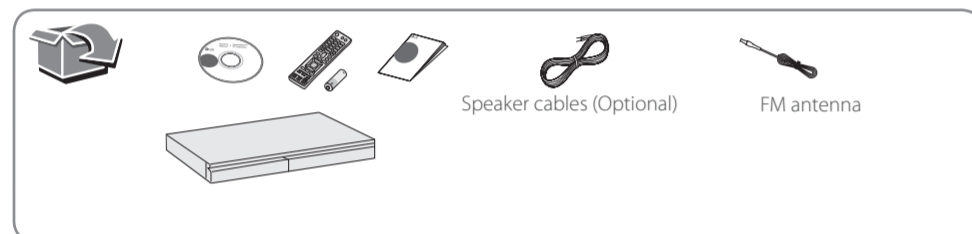
Un manuel d'utilisation détaillé contenant les informations sur les fonctionnalités avancées est disponible sur le CD-ROM fourni. Pour lire ces fichiers, vous aurez besoin d'utiliser un Ordinateur Personnel (PC) avec un lecteur de CD-ROM.

**ESPAÑOL | MANUAL SIMPLE**

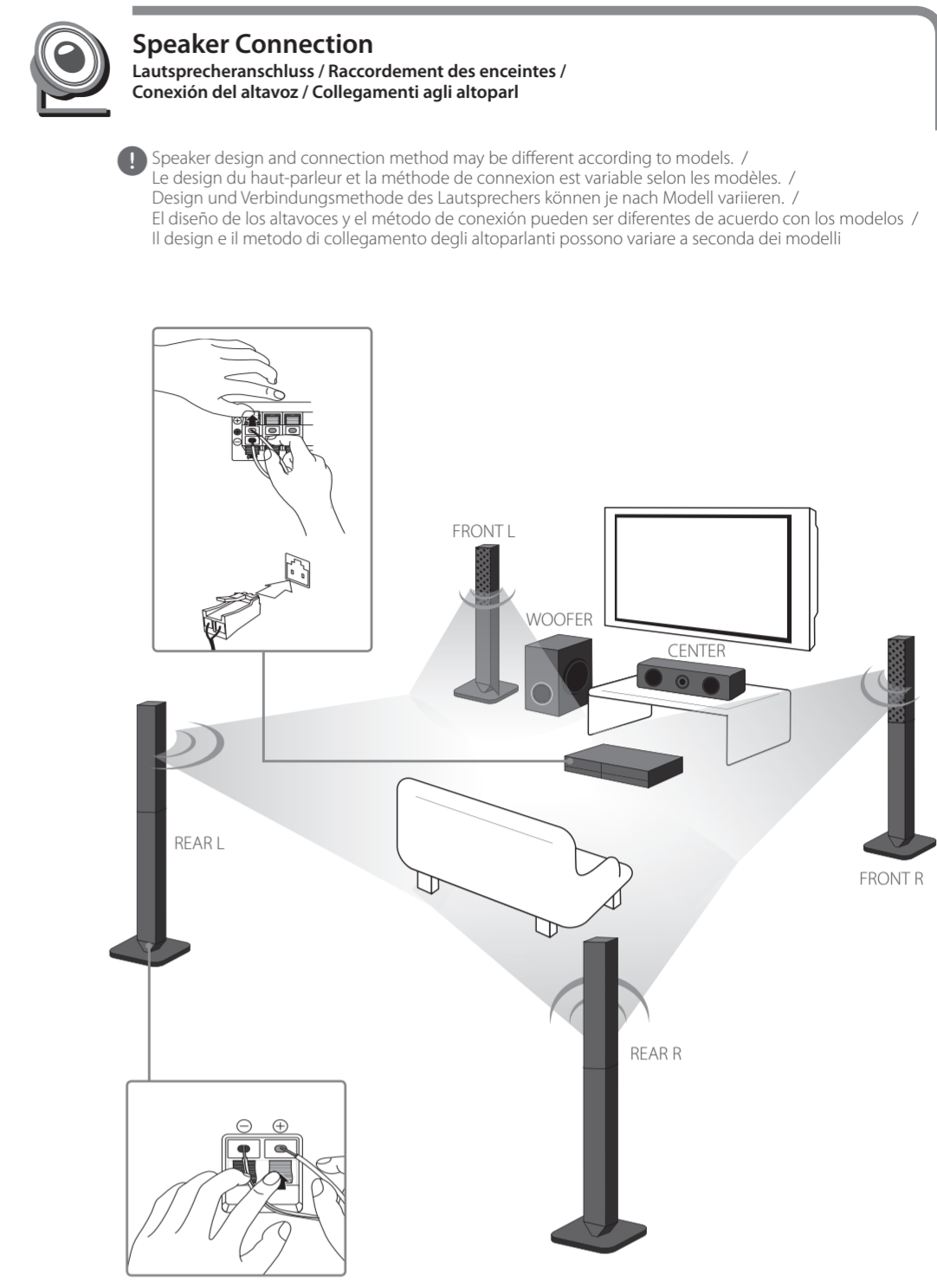
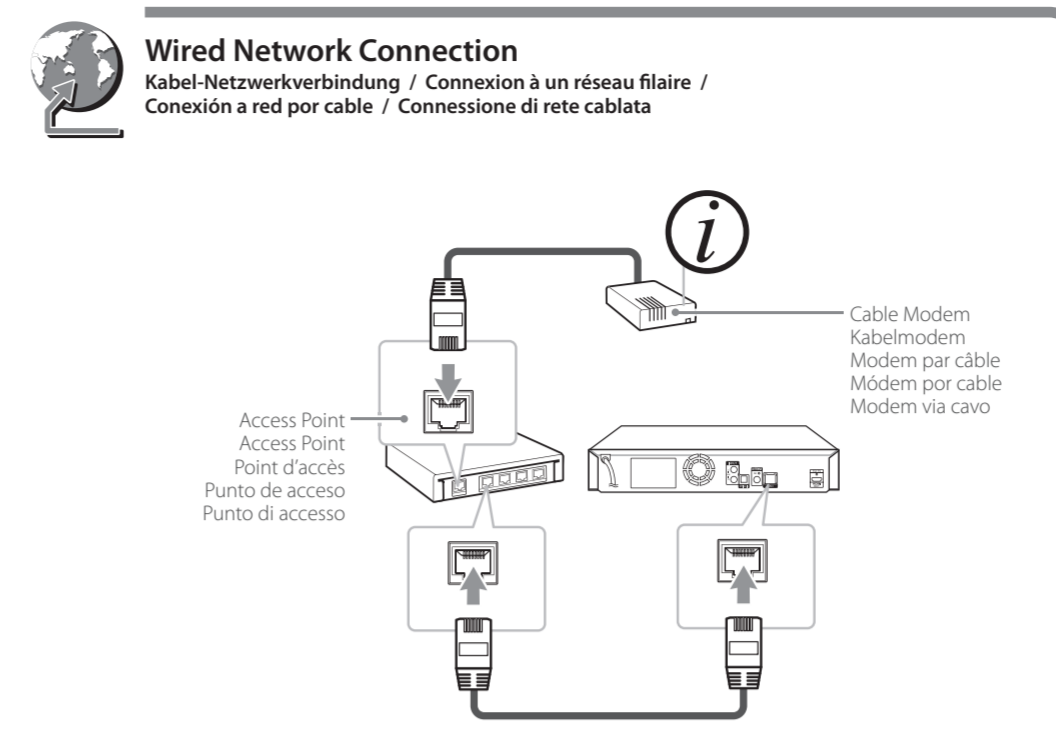
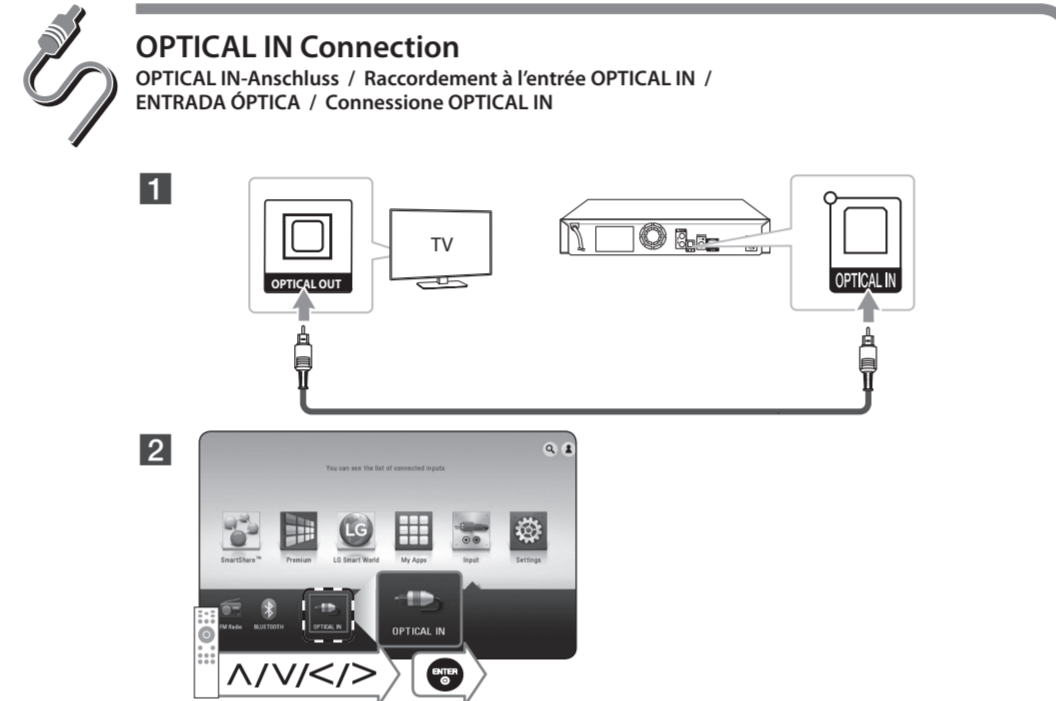
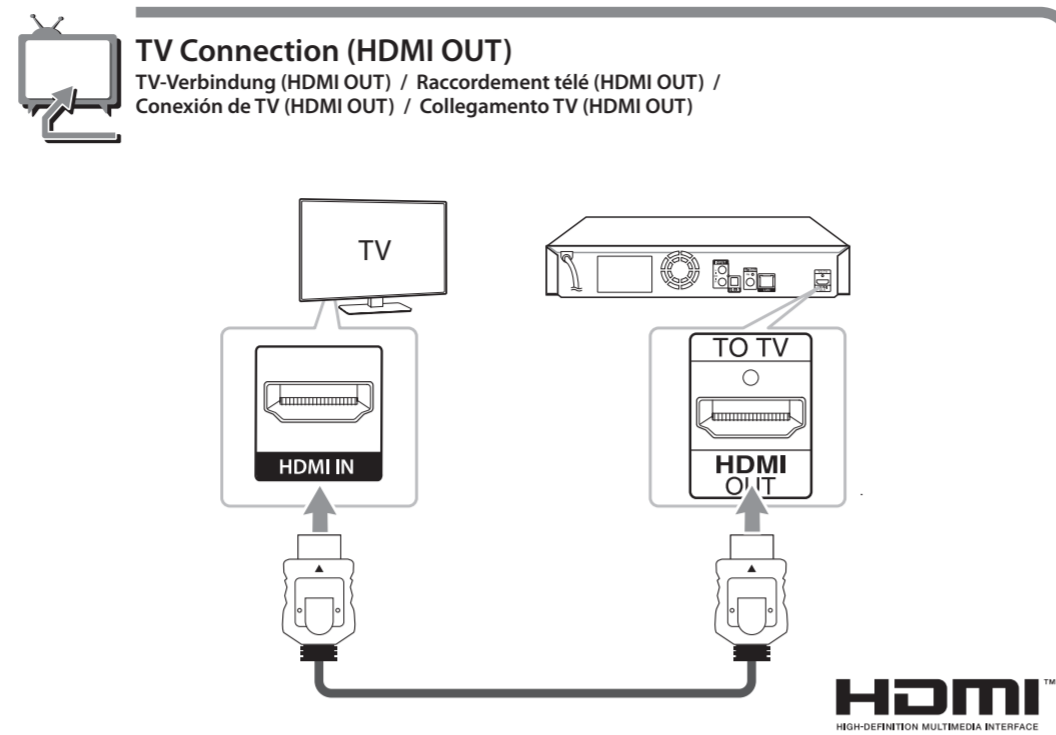
En el CD-ROM se incluye una versión electrónica extendida del Manual del Usuario ampliado con funciones avanzadas. Para poder leerlo debe abrir dichos archivos desde un ordenador personal (PC) equipado con una unidad de CD-ROM.

**ITALIANO | MANUALE SEMPLIFICATO**

Un ampio manuale dell'utente che contiene le informazioni sulle caratteristiche avanzate è registrato nel CD-ROM fornito nella versione elettronica. Per leggere questi file, dovete usare un personal computer (PC) fornito di drive per CD-ROM.



www.lg.com



**Initial Setup**  
Sicherheitshinweise / Consignes de sécurité / Información de seguridad / Informazioni di sicurezza



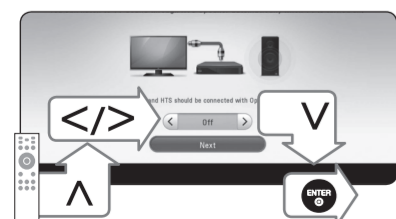
Follow the directions for the initial setup displayed on the screen. / Bitte befolgen Sie die Bildschirmhinweisen für den Erst-Setup. / Pour la configuration initiale, suivez les instructions qui s'affichent. / Siga las instrucciones para la configuración inicial que se muestran en la pantalla. / Segui le indicazioni per la configurazione iniziale visualizzate sullo schermo.



Start the speaker test. / Starten Sie den Lautsprechertest. / Lancez le test du haut-parleur. / Iniciar la prueba del altavoz. / Inizia il test degli altoparlanti.

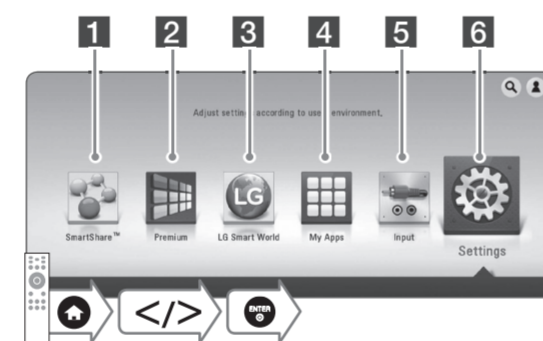


Stop the speaker test and select [Next]. / Stoppen Sie den Lautsprechertest und wählen Sie [Weit.]. / Arrêtez le test du haut-parleur et sélectionnez [prochain]. / Detenga la prueba del altavoz y seleccione [Sig.]. / Interrompi il test degli altoparlanti e seleziona [Succ.].



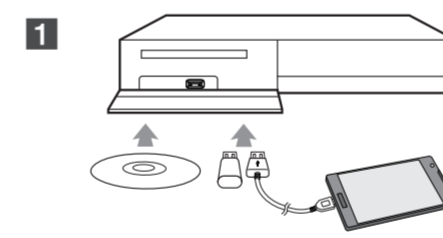
Setup [TV Sound Connecting] and select [Next]. / Öffnen Sie [TV-Tonanschluss] und wählen Sie [Weit.]. / Configurez [Connexion au son du téléviseur] et sélectionnez [prochain]. / Configure [Conectando sonido TV] y seleccione [Sig.]. / Imposta [Collegamento del TV Sound] e seleziona [Succ.].

**Using HOME menu**  
Verwendung HOME-Menü / Utilisation du menu ACCUEIL / Uso del menú HOME / Utilizzo menù HOME

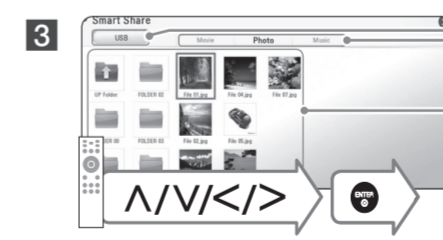
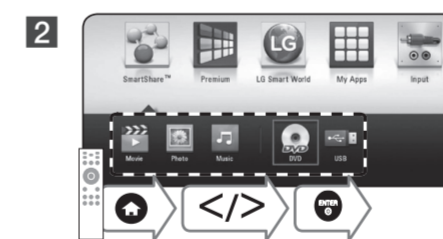


- 1 Displays SmartShare menu. / Anzeige des Smart Share-Menüs. / Afficher le menu de partage intelligent. / Visualizza il menù Smart Share.
- 2 Displays LG Apps titles provided to the unit. / Premium-Startbildschirm aufrufen. / Afficher l'écran d'accueil Premium. / Muestra la pantalla de inicio Premium. / Visualizza la schermata Home Premium.
- 3 Displays the [My Apps] screen. / Anzeige der in der Einheit verfügbaren LG Apps-Titel. / Afficher l'écran LG Apps. / Muestra los títulos de las LG Apps proporcionadas a la unidad. / Visualizza i titoli delle LG Apps in dotazione nell'unità.
- 4 Displays the [My Apps] screen. / Anzeige des [My Apps]-Bildschirms. / Afficher l'écran [Mes Applications]. / Muestra la pantalla [Mis Ap]. / Visualizza la schermata [Mie Applicazioni].
- 5 Changes input mode. / Eingangsmodus ändern. / Modifier la source d'entrée. / Cambia el modo de entrada. / Cambia modo di immissione.
- 6 Adjusts the system settings. / Systemeinstellungen aufrufen. / Réglage des paramètres du système. / Ajusta la configuración del sistema. / Regola le impostazioni del sistema.

**Disc, Data Playback**  
Disk, Datenwiedergabe / Lecture de disques, de données / Disco, Reproducción de datos / Disco, Riproduzione dati



1 Devices that support MTP. / Geräte, die MTP unterstützen. / Appareils compatibles MTP. / Dispositivos que soportan MTP. / Dispositivi che supportano MTP.



Displays all linked devices. / Anzeige aller verlinkten Geräte. / Affiche tous les appareils en liaison. / Muestra todos los dispositivos vinculados. / Visualizza tutti i dispositivi collegati.

Selects video, photo or audio content. / Auswahl von Video-, Foto- oder Audio-Inhalt. / Sélectionnez un contenu vidéo, photo ou audio. / Selecciona el contenido vídeo, foto o audio. / Seleziona contenuti video, foto o audio.

Displays the file or folder on linked device. / Anzeige von Datei oder Ordner auf dem verlinkten Gerät. / Affiche le fichier ou le dossier sur l'appareil en liaison. / Muestra el archivo o la carpeta del dispositivo vinculado. / Visualizza il file o la cartella sul dispositivo collegato.

1 For the most Audio CD, BD-ROM and DVD-ROM discs, playback starts automatically. / Die Wiedergabe wird bei den meisten Audio-CDs, BD-ROM- und DVD-ROM-Discs automatisch gestartet. / Pour la plupart des CD audio, BD-ROM et DVD-ROM, la lecture démarre automatiquement. / La mayoría de CD de audio, BD-ROM y DVD-ROM se reproducen automáticamente. / Per la maggior parte dei dischi Audio CD, BD-ROM e DVD-ROM, la riproduzione viene avviata automaticamente.

**Network Playback**  
Netzwerk wiedergabe / Lecteur en réseau / Reproducción en red / Riproduzione rete

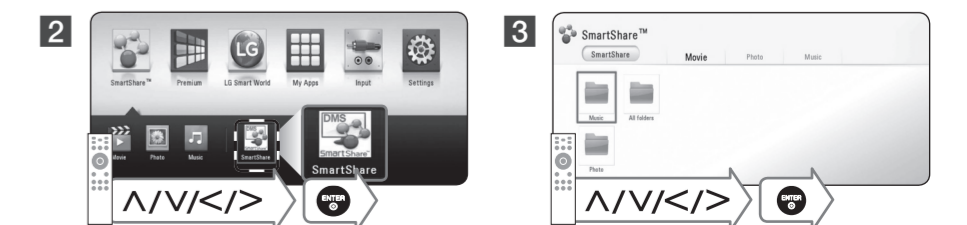
**SmartShare PC software Installation**  
Installation von "SmartShare PC Software" / Installation de SmartShare PC / Instalación del software de PC SmartShare / Installazione del software SmartShare PC

1 Install SmartShare PC Software. / Installieren Sie die SmartShare PC Software. / Installez SmartShare PC. / Instalar software de PC SmartShare. / Installa il software SmartShare PC

2 Run the program, and set the share folder you want. / Starten Sie das Programm und legen Sie einen gewünschten Freigabeordner fest. / Exécutez le programme et définissez le dossier partagé de votre choix. / Ejecute el programa, y seleccione la carpeta para compartir deseada. / Eseguì il programma e imposta la cartella di condivisione che desidera.

**SmartShare Network Playback**  
Wiedergabe über Smart Share-Netzwerk / Lecture réseau par partage intelligent / Reproducción en Red Smart Share / Riproduzione di SmartShare Network

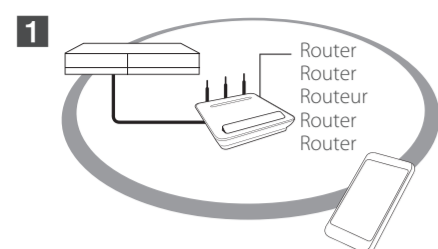
1 Check the network connection and settings. / Überprüfen Sie Netzwerkverbindung und -einstellungen. / Vérifier la connexion et les paramètres réseau. / Compruebe la conexión y la configuración de la red. / Controllare il collegamento di rete e le impostazioni.





### Enjoying Private Sound

Genießen Sie die "Private Sound"-Funktion / Écouter du son en privé / Disfrute del sonido privado / Goditi Audio Privato



- 1 Turn on the mobile device LG AV Remote app is installed and run LG AV Remote. / Schalten Sie das Mobilgerät, auf dem die LG AV Remote-Anwendung installiert ist, an und führen Sie "LG AV Remote" aus. / Activez l'appareil mobile sur lequel l'application LG AV Remote est installée et exécutez cette dernière. / Encienda el dispositivo móvil donde está instalada la aplicación LG AV Remote y ejecute LG AV Remote. / Accendi il dispositivo mobile. Verifica che l'applicazione AV Remote di LG sia installata ed esegui AV Remote di LG.

Make sure that your smartphone is connected to the same Wi-Fi network as this player. / Stellen Sie sicher, dass Ihr iTunes-Host-Gerät mit demselben Wi-Fi-Netzwerk wie dieses Gerät verbunden ist. / Assurez-vous que votre appareil hébergeant iTunes est connecté au même réseau Wi-Fi que cet appareil. / Asegúrese que su dispositivo anfitrión iTunes está conectado a la misma red Wi-Fi que esta unidad. / Assicurati che il tuo smartphone sia collegato alla stessa rete Wi-Fi di questo lettore multimediale.

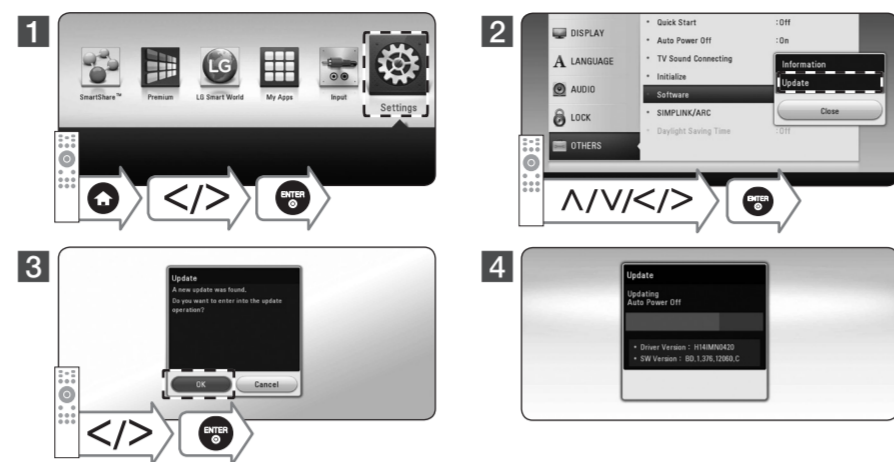


- 1 Not all modes support private sound and pairing multiple devices is not available. / Nicht alle Modi unterstützen die "Private Sound"-Funktion und das Verbinden von mehreren Geräten ist nicht verfügbar. / Tous les modes ne supportent pas le son en privé et l'appairage avec plusieurs appareils n'est pas disponible. / No todos los modos soportan el sonido privado y no está disponible la vinculación de múltiples dispositivos / Non tutte le modalità supportano l'audio privato e l'accoppiamento di più dispositivi non è disponibile.



### Software Update

Software-Update / Mise à jour du logiciel / Actualización del software / Aggiornamento del software



### Additional Information

Weitere Informationen / Informations supplémentaires / Información adicional / Informazioni aggiuntive

#### Customer Support

You can update the Player using the latest software to enhance the products operation and/or add new features. To obtain the latest software for this player (if updates have been made), proceed the software updates as above or visit <http://www.lg.com> or contact LG Electronics customer care centre.

#### Kundendienst

Die Software des Players kann auf die aktuellste Version aktualisiert werden, um den Funktionsumfang zu erweitern und/oder neue Funktionen hinzuzufügen. Die aktuelle Software für diesen Player (falls verfügbar) finden Sie unter <http://www.lg.com>, oder wenden Sie sich an den LG Electronics Kundendienst.

#### Support client

Vous pouvez mettre à jour le lecteur avec les derniers logiciels afin d'améliorer son fonctionnement et/ou d'ajouter de nouvelles fonctionnalités. Pour obtenir les derniers logiciels disponibles pour ce lecteur (si des mises à jour sont disponibles), visitez le site <http://www.lg.com> ou contactez le service après-vente LG Electronics.

#### Asistencia al cliente

Puede actualizar el reproductor con el último software para mejorar el funcionamiento del producto y/o añadir nuevas funciones. Para obtener el último software de este reproductor (si hubiera actualizaciones), visite <http://www.lg.com> o póngase en contacto con el Centro de atención al cliente de LG Electronics.

#### Assistenza clienti

È possibile aggiornare il lettore con il software più recente per ottimizzare il funzionamento del prodotto e/o aggiungere nuove funzioni. Per ottenere il software più recente per questo lettore (in caso di disponibilità di nuovi aggiornamenti), visitare <http://www.lg.com> oppure rivolgersi al centro assistenza clienti di LG Electronics.

#### Open source software notice

To obtain the corresponding source code under GPL, LGPL and other open source licenses, please visit <http://opensource.lge.com>. All referred license terms, warranty disclaimers and copyright notices are available to download with the source code.

#### Hinweise zu Open Source-Software

Eine Kopie der GPL-, LGPL- und anderer Open Source-Genehmigungen finden Sie unter <http://opensource.lge.com>. Sämtliche angegebenen Lizenzbedingungen, Haftungsausschlüsse und Hinweise zum Urheberrecht stehen als Quellcode zum Download bereit.

#### Avis concernant les logiciels open source

Pour connaître le code source correspondant de GPL, LGPL et d'autres licences open source, rendez-vous sur <http://opensource.lge.com>. Les conditions de licence, les dénis de responsabilités et les avis concernant les droits d'auteur sont disponibles en téléchargement avec le code source.

#### Aviso sobre el software de código abierto

Para obtener el correspondiente código bajo la licencia de GPL, LGPL y otras licencias de código abierto, visite <http://opensource.lge.com>. Todos los terminos referidos, la exclusion de garantía y los avisos de copyright pueden descargarse con código abierto.

#### Nota di software di libera circolazione

Per ottenere il corrispondente codice di software di libera circolazione in base alle licenze GPL, LGPL e altre, visitate il sito <http://opensource.lge.com>. Tutti i termini relativi a licenza, rivendicazioni di garanzia e note di copyright sono disponibili per lo scaricamento con il codice di sorgente.



### Specification

Technische Daten / Spécifications / Especificaciones / Specifiche

#### ENGLISH

Power requirements	Refer to main label.
Power consumption	Refer to main label.
Dimensions (W x H x D)	Approx. 360 mm x 60.5 mm x 299 mm
Net Weight (Approx.)	2,7 kg
Bus Power Supply (USB)	5 V $\overline{\text{---}}$ 500 mA

Design and specifications are subject to change without notice.

#### DEUTSCH

Stromversorgung	Siehe Hauptetikett.
Leistungsaufnahme	Siehe Hauptetikett.
Abmessungen (B x H x T)	Ca. 360 mm x 60,5 mm x 299 mm
Gesamtgewicht (ca.)	2,7 kg
Stromversorgung über Bus (USB)	5 V $\overline{\text{---}}$ 500 mA

Änderungen der Ausführung und der technischen Daten ohne vorherige Ankündigung vorbehalten.

#### FRANÇAIS

Alimentation	Référez-vous à l'étiquette principale.
Consommation électrique	Référez-vous à l'étiquette principale.
Dimensions (L x H x P)	Approximativement 360 mm x 60,5 mm x 299 mm
Poids net (approx.)	2,7 kg
Bus Power Supply (USB)	5 V $\overline{\text{---}}$ 500 mA

La conception et les spécifications sont sujettes à modification sans préavis.

#### ESPAÑOL

Requisitos de alimentación	Consulte la etiqueta principal.
Consumo de energía	Consulte la etiqueta principal.
Dimensiones (A x Alt x F)	Approx. 360 mm x 60,5 mm x 299 mm
Peso neto (aprox.)	2,7 kg
Alimentación bus (USB)	5 V $\overline{\text{---}}$ 500 mA

El diseño y las especificaciones están sujetas a cambio sin previo aviso.

#### ITALIANO

Requisiti di alimentazione	Fare riferimento all'etichetta principale.
Absorbimento energetico	Fare riferimento all'etichetta principale.
DIMENSIONI (L x A x P)	Approx. 360 mm x 60,5 mm x 299 mm
Peso netto (approssimativo)	2,7 kg
Alimentazione tensione bus (USB)	5 V $\overline{\text{---}}$ 500 mA

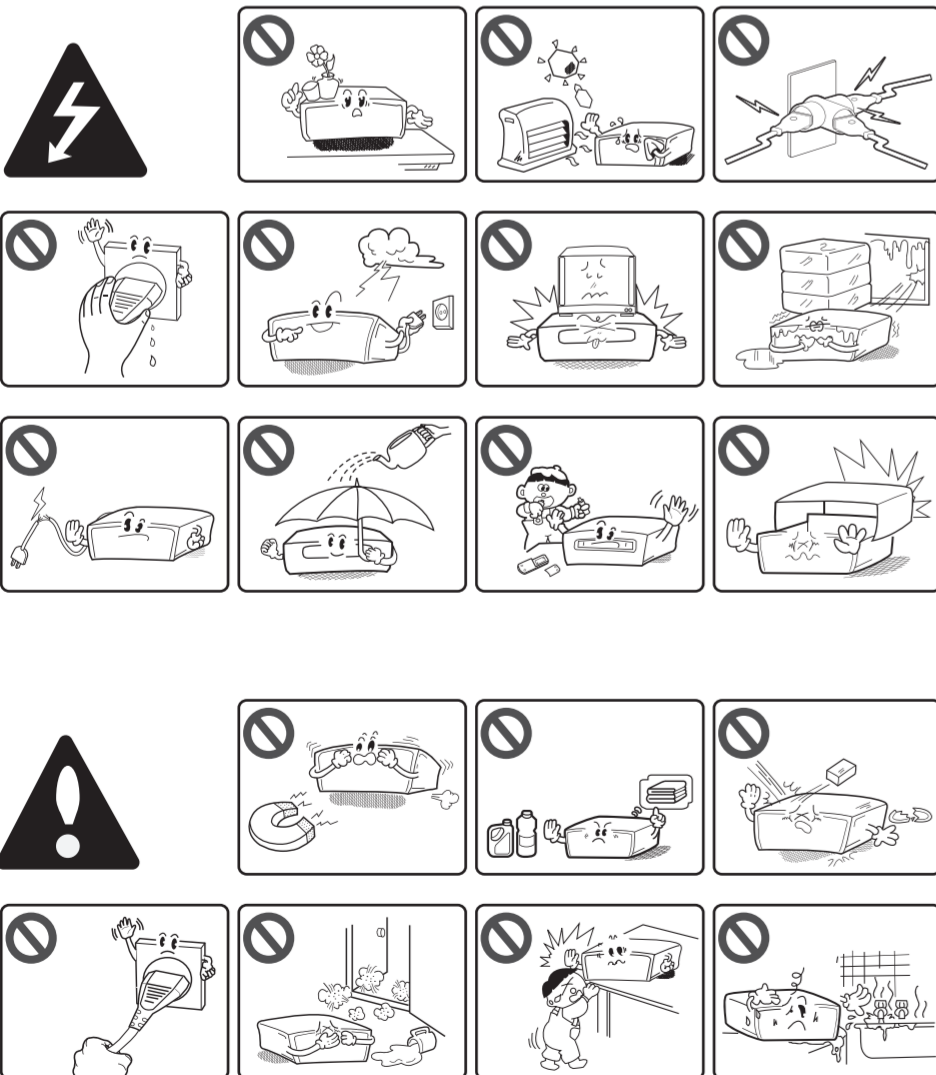
Il design e le specifiche tecniche sono soggette a cambiamento senza preavviso.

Some of the content in this manual may differ from your player depending on the software of the player or your service provider. / Anhängig von der Software Ihres Players oder Service Providers unterscheiden sich einige Inhalte dieses Handbuchs u.U. von Ihrem Player. / Certaines informations de ce manuel sont susceptibles de différer de votre lecteur, selon votre logiciel serveur ou votre fournisseur de services. / Algunos de los contenidos de este manual pueden diferir de su reproductor, dependiendo del software del reproductor o de su proveedor de servicios. / Alcuni dei contenuti presenti in questo manuale potrebbero presentare delle differenze rispetto al suo lettore a seconda del software del lettore o del suo fornitore di servizi.



### Safety Information

Sicherheitshinweise / Consignes de sécurité / Información de seguridad / Informazioni di sicurezza



CAUTION: TO REDUCE THE RISK OF ELECTRIC SHOCK DO NOT REMOVE COVER (OR BACK) NO USER-SERVICEABLE PARTS INSIDE REFER SERVICING TO QUALIFIED SERVICE PERSONNEL.

This lightning flash with arrowhead symbol within an equilateral triangle is intended to alert the user to the presence of uninsulated dangerous voltage within the product's enclosure that may be of sufficient magnitude to constitute a risk of electric shock to persons.

The exclamation point within an equilateral triangle is intended to alert the user to the presence of important operating and maintenance (servicing) instructions in the literature accompanying the product.

WARNING: TO PREVENT FIRE OR ELECTRIC SHOCK HAZARD, DO NOT EXPOSE THIS PRODUCT TO RAIN OR MOISTURE.

WARNING: Do not install this equipment in a confined space such as a book case or similar unit.

CAUTION: Do not block any ventilation openings. Install in accordance with the manufacturer's instructions. Slots and openings in the cabinet are provided for ventilation and to ensure reliable operation of the product and to protect it from over heating. The openings shall be never be blocked by placing the product on a bed, sofa, rug or other similar surface. This product shall not be placed in a built-in installation such as a bookcase or rack unless proper ventilation is provided or the manufacturer's instruction has been adhered to.



Use of controls, adjustments or the performance of procedures other than those specified herein may result in hazardous radiation exposure.

CAUTION concerning the Power Cord To disconnect power from the mains, pull out the mains cord plug. When installing the product, ensure that the plug is easily accessible.

CAUTION: The apparatus shall not be exposed to water (dripping or splashing) and no objects filled with liquids, such as vases, shall be placed on the apparatus.

This device is equipped with a portable battery or accumulator. Safety way to remove the battery or the battery from the equipment: Remove the old battery or battery pack, follow the steps in reverse order than the assembly. To prevent contamination of the environment and bring on possible threat to human and animal health, the old battery or the battery put it in the appropriate container at designated collection points. Do not dispose of batteries or battery together with other waste. It is recommended that you use local, free reimbursement systems, batteries and accumulators. The battery shall not be exposed to excessive heat such as sunshine, fire or the like.

#### Disposal of your old appliance

1. When this crossed-out wheeled bin symbol is attached to a product it means the product is covered by the European Directive 2002/96/EC.
2. All electrical and electronic products should be disposed of separately from the municipal waste stream via designated collection facilities appointed by the government or the local authorities.
3. The correct disposal of your old appliance will help prevent potential negative consequences for the environment and human health.
4. For more detailed information about disposal of your old appliance, please contact your city office, waste disposal service or the shop where you purchased the product.

#### Disposal of waste batteries/accumulators

1. When this crossed-out wheeled bin symbol is attached to batteries/accumulators of Your product it means they are covered by European Directive 2006/66/EC.
2. This symbol may be combined with chemical symbols for mercury(Hg), cadmium(Cd) or lead(Pb) if the battery Contains more than 0.0005% of mercury, 0.002% of cadmium or 0.004% of lead.
3. All batteries/accumulators should be disposed separately from the municipal waste stream via designated collection facilities appointed by the government or the local authorities.
4. The correct disposal of Your old batteries/accumulators will help to prevent potential negative consequences for the environment, animal and human health.
5. For more detailed information about disposal of Your old batteries/accumulators, please contact Your city office, waste disposal service or the shop where You purchased the product.

#### For Wireless product European Union Notice

CE 0197

LG Electronics hereby declares that this/these product(s) is/are in compliance with the essential requirements and other relevant provisions of Directive 1999/5/EC, 2004/108/EC, 2006/95/EC, 2009/125/EC and 2011/65/EU.

Please contact to the following address for obtaining a copy of the DoC (Declaration of Conformity).

Contact office for compliance of this product: LG Electronics Inc. EU Representative, Krijgsman 1, 1186 DM Amstelveen, The Netherlands

- Please note that this is NOT a Customer Service contact point. For Customer Service Information, see Warranty Card or contact the dealer that you purchased this product.

Indoor use only.

#### RF Radiation Exposure Statement

This equipment should be installed and operated with minimum distance 20 cm between the radiator and your body.



### Memo

Blank lined area for writing a memo.



### Memo

Blank lined area for writing a memo.