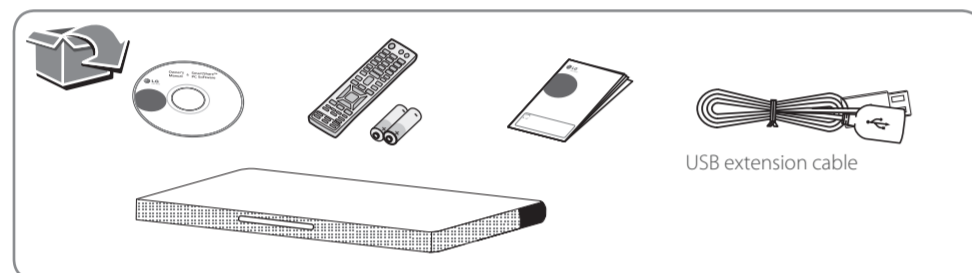


**SoundPlate™**  
LAB540W  
All-in-one Home Theater

Model :  
LAB540W

**ENGLISH | SIMPLE MANUAL**

An extended Owner's Manual that contains information on the advanced features is located on the CD-ROM provided in an electronic version. To read these files, you will need to use a Personal Computer (PC) equipped with a CD-ROM drive. Some of the content in this manual may differ from your unit.

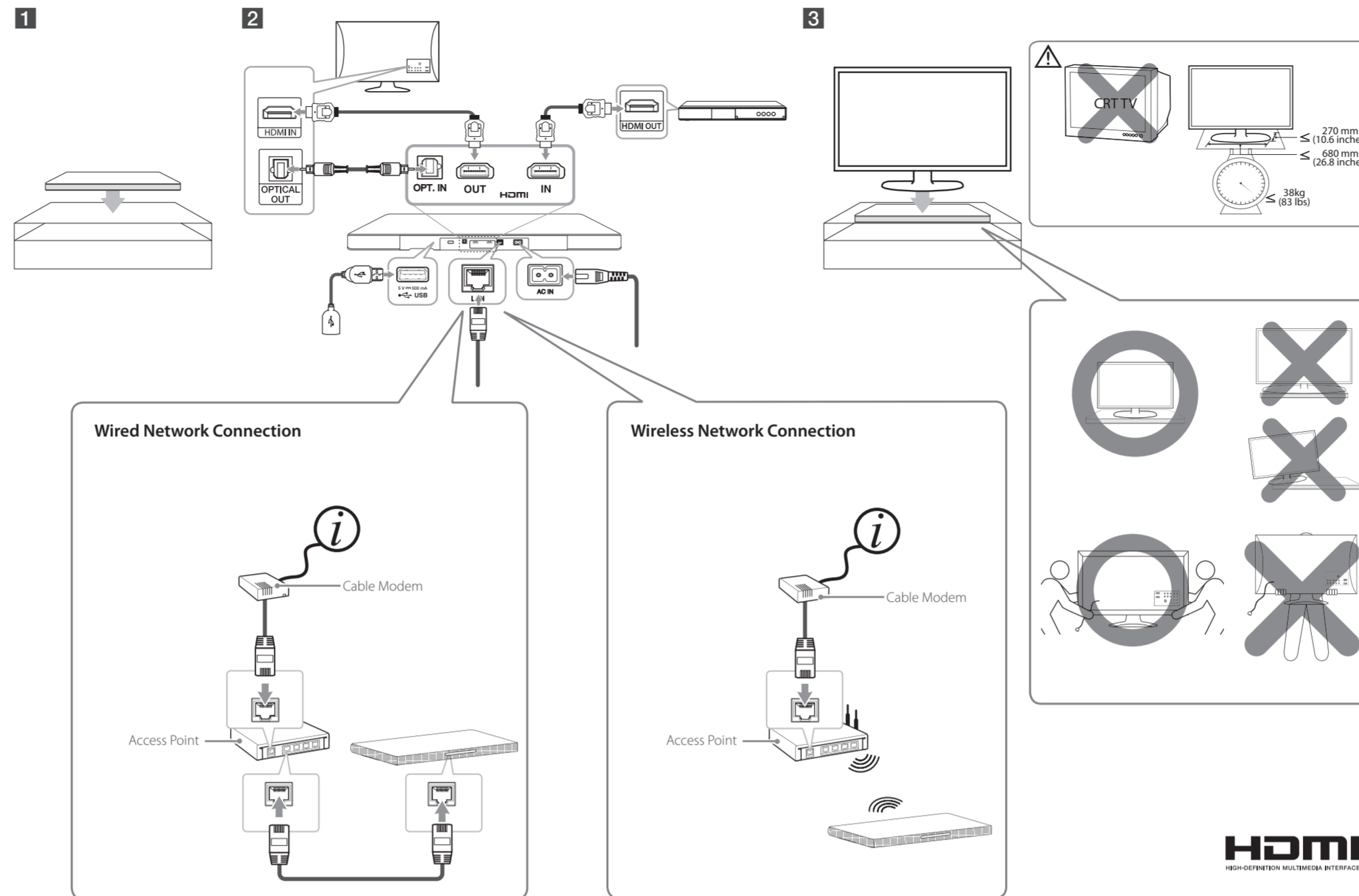


USB extension cable



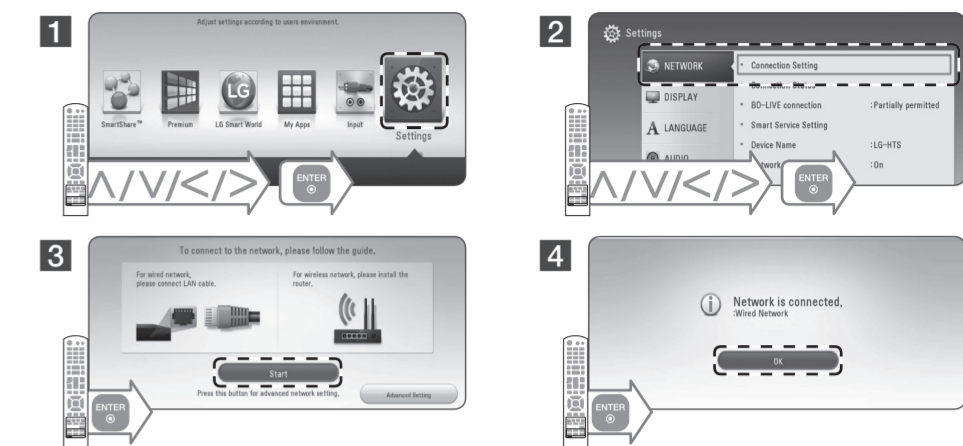
www.lg.com  
Printed in Indonesia

**Installation**

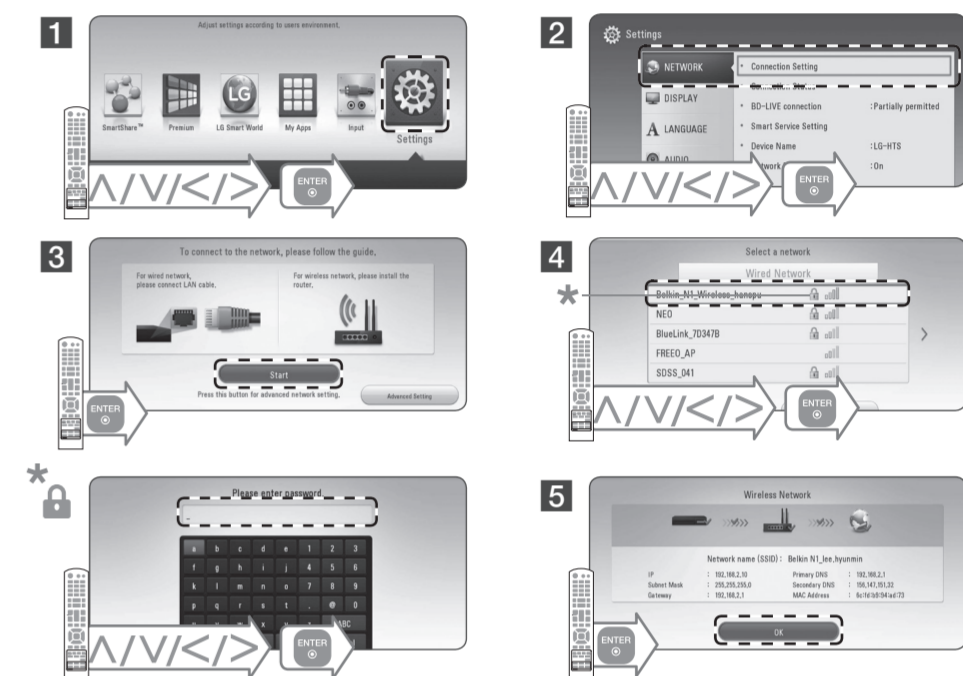


**Network Settings**

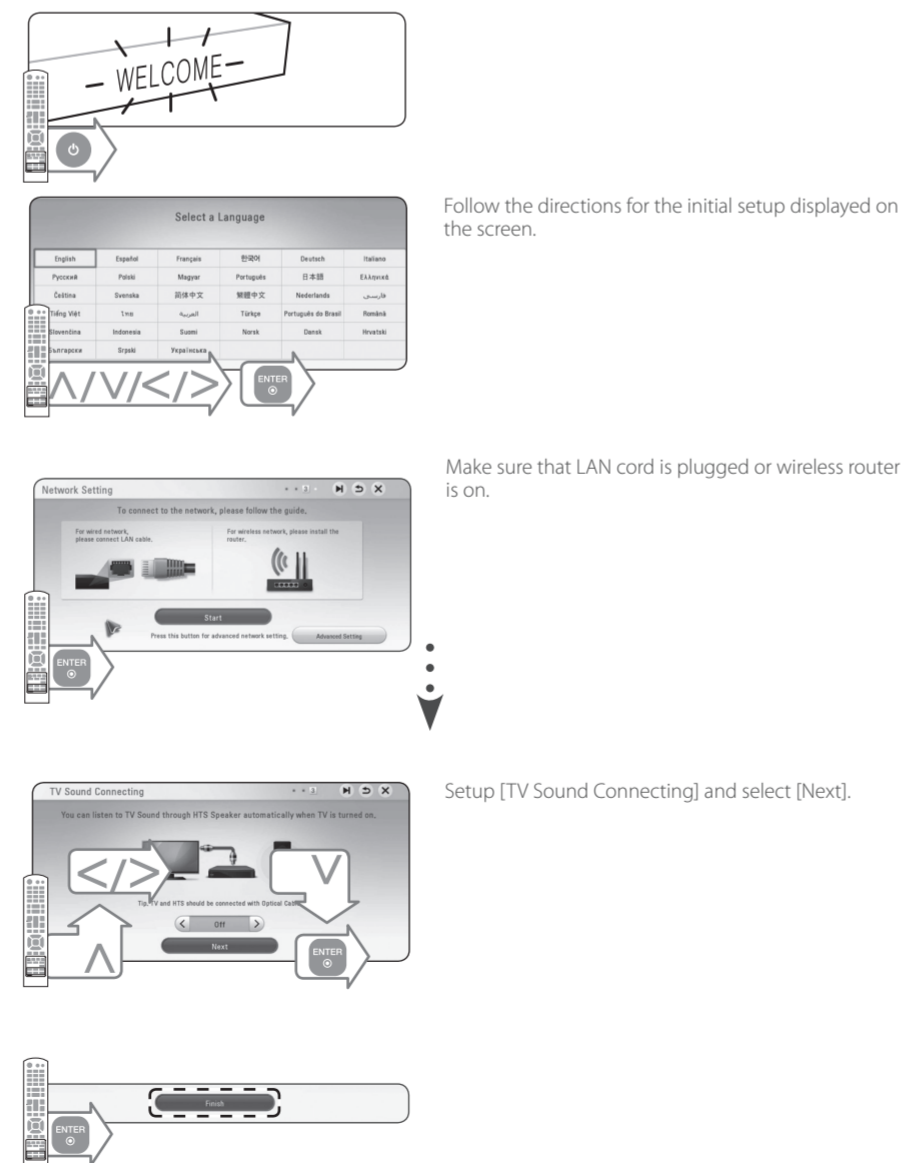
**Wired Network**



**Wireless Network**



**Initial Setup**

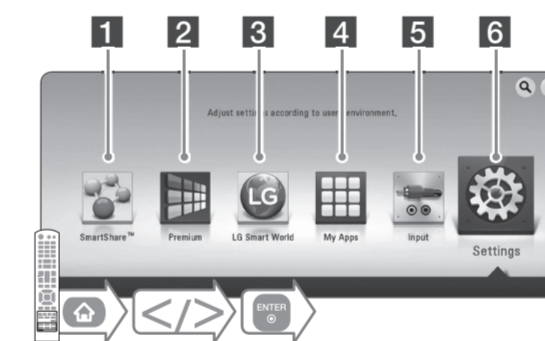


Follow the directions for the initial setup displayed on the screen.

Make sure that LAN cord is plugged or wireless router is on.

Setup [TV Sound Connecting] and select [Next].

**Using HOME menu**



1 Displays SmartShare menu.

2 Displays the Premium Home screen.

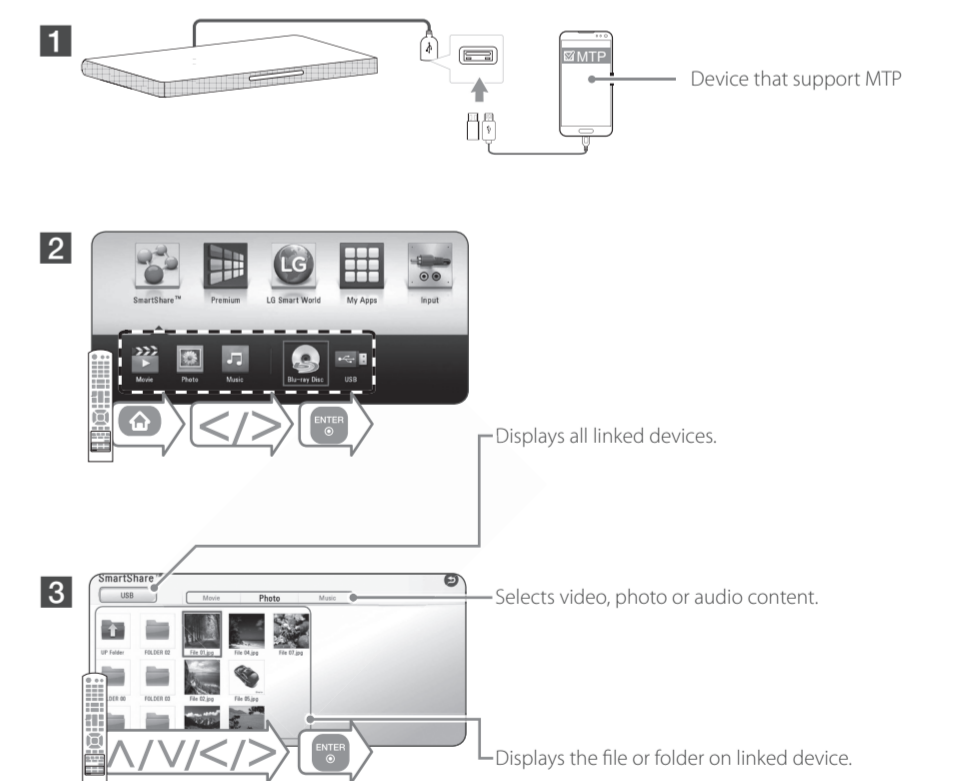
3 Displays LG Apps titles provided to the unit.

4 Displays the [My Apps] screen.

5 Changes input mode.

6 Adjusts the system settings.

**Disc, Data Playback**



! For most Audio CD, BD-ROM and DVD-ROM discs, playback starts automatically.



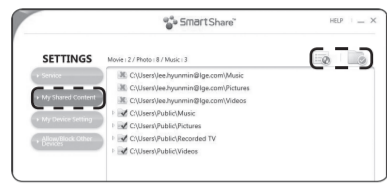
## Network Playback



### SmartShare PC software Installation

- 1 Install SmartShare PC software.

- 2 Run the program, and set the share folder you want.

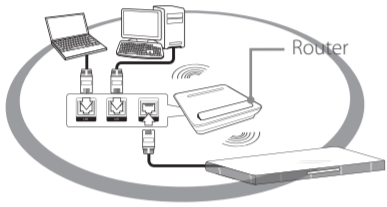


- 3 Turn on the media server for using S/W



### SmartShare Network Playback

- 1 Check the network connection and settings.



- 2
- 3



- 3



## Additional Information

### Customer Support

You can update the Player using the latest software to enhance the products operation and/or add new features. To obtain the latest software for this player (if updates have been made), proceed the software updates as written or visit <http://www.lg.com> or contact LG Electronics customer care center.

### Open source software notice

To obtain the corresponding source code under GPL, LGPL and other open source licenses, please visit <http://opensource.lg.com>. All referred license terms, warranty disclaimers and copyright notices are available to download with the source code.



## Specification

Technische Daten / Spécifications / Especificaciones / Specifiche

### ENGLISH

Power requirements	120 V ~ 60 Hz
Power consumption	38 W
Dimensions (W x H x D)	Approx. 700 mm x 39.5 mm x 320 mm (27.5 inches x 1.5 inches x 12.6 inches)
Net Weight (Approx.)	4.6 kg (10.1 lbs)
Bus Power Supply (USB)	5 V $\overline{\text{---}}$ 500 mA

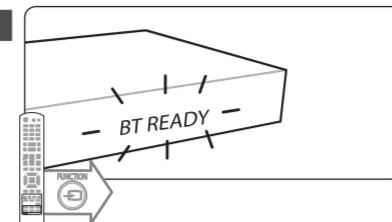
Design and specifications are subject to change without notice.

NOTICE: For Product Identification and Compliance/Safety labeling information please refer to Main label on the bottom of unit.

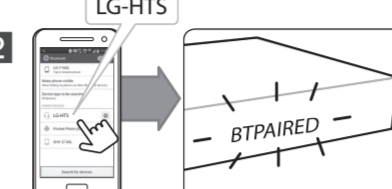


## Using Bluetooth

- 1 Select the Bluetooth function.



- 2 Set on the bluetooth and Select "LG-HTS" on your bluetooth device.

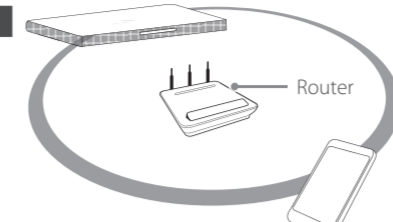


- 3 Play music on your bluetooth device.



## Enjoying Private Sound

- 1 Make sure that mobile device is connected to the same Wi-Fi network as this player.



- 2 Turn on the mobile device LG AV Remote App is Installed and run LG AV Remote App.

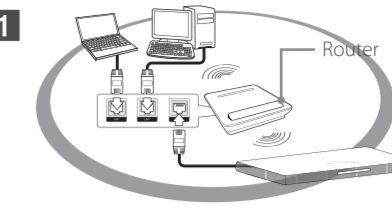


- 3 Not all modes support sound privacy and pairing multiple devices is not available.



## Software Update

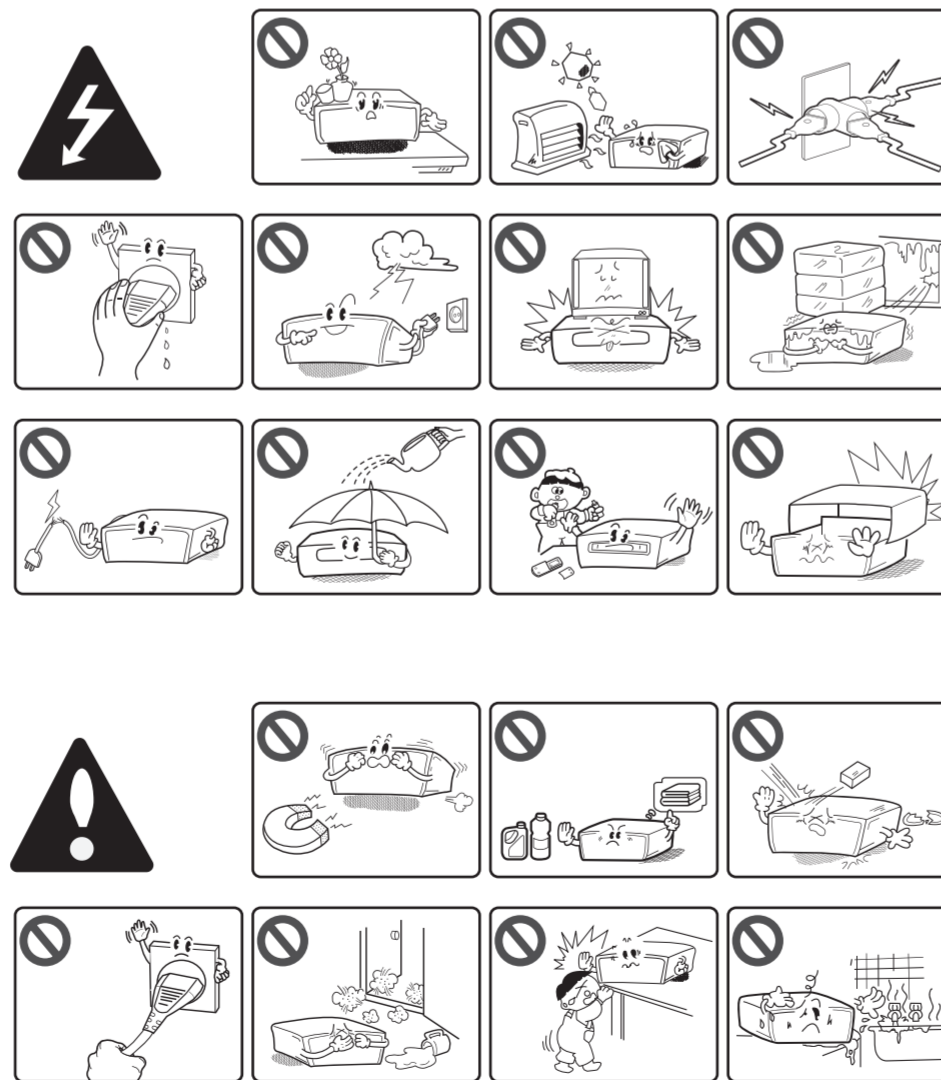
- 1 Check the network connection and settings.



- 2 Select [Update] in the [Settings] -> [OTHERS] -> [Software] then follow the directions on the screen.



## Safety Information



### CAUTION

**RISK OF ELECTRIC SHOCK DO NOT OPEN**  
CAUTION: TO REDUCE THE RISK OF ELECTRIC SHOCK DO NOT REMOVE COVER (OR BACK) NO USER-SERVICEABLE PARTS INSIDE. REFER SERVICING TO QUALIFIED SERVICE PERSONNEL.

This lightning flash with arrowhead symbol within an equilateral triangle is intended to alert the user to the presence of uninsulated dangerous voltage within the product's enclosure that may be of sufficient magnitude to constitute a risk of electric shock to persons.

The exclamation point within an equilateral triangle is intended to alert the user to the presence of important operating and maintenance (servicing) instructions in the literature accompanying the product.

**WARNING:** This product contains chemicals known to the State of California to cause cancer and birth defects or other reproductive harm. *Wash hands after handling.*

**WARNING:** TO PREVENT FIRE OR ELECTRIC SHOCK HAZARD, DO NOT EXPOSE THIS PRODUCT TO RAIN OR MOISTURE.

**WARNING:** Do not install this equipment in a confined space such as a book case or similar unit.

**CAUTION:** Do not block any ventilation openings. Install in accordance with the manufacturer's instructions. Slots and openings in the cabinet are provided for ventilation and to ensure reliable operation of the product and to protect it from over heating. The openings shall be never be blocked by placing the product on a bed, sofa, rug or other similar surface. This product shall not be placed in a built-in installation such as a bookcase or rack unless proper ventilation is provided or the manufacturer's instruction has been adhered to.



**CAUTION:** This product employs a Laser System. To ensure proper use of this product, please read this owner's manual carefully and retain it for future reference. Shall the unit require maintenance, contact an authorized service center.

Use of controls, adjustments or the performance of procedures other than those specified herein may result in hazardous radiation exposure.

**CAUTION concerning the Power Cord**  
To disconnect power from the mains, pull out the mains cord plug. When installing the product, ensure that the plug is easily accessible.

**CAUTION:** The apparatus shall not be exposed to water (dripping or splashing) and no objects filled with liquids, such as vases, shall be placed on the apparatus.

This device is equipped with a portable battery or accumulator.

**Safety way to remove the battery or the battery from the equipment:** Remove the old battery or battery pack, follow the steps in reverse order than the assembly. To prevent contamination of the environment and bring on possible threat to human and animal health, the old battery or the battery put it in the appropriate container at designated collection points. Do not dispose of batteries or battery together with other waste. It is recommended that you use local, free reimbursement systems batteries and accumulators. The battery shall not be exposed to excessive heat such as sunshine, fire or the like.

## IMPORTANT SAFETY INSTRUCTIONS

1. Read these instructions.
2. Keep these instructions.
3. Heed all warnings.
4. Follow all instructions.
5. Do not use this apparatus near water.
6. Clean only with dry cloth.
7. Do not block any ventilation openings. Install in accordance with the manufacturer's instructions.
8. Do not install near any heat sources such as radiators, heat registers, stoves, or other apparatus (including amplifiers) that produce heat.
9. Do not defeat the safety purpose of the polarized or grounding-type plug. A polarized plug has two blades with one wider than the other. A grounding type plug has two blades and a third grounding prong. The wide blade or the third prong are provided for your safety. If the provided plug does not fit into your outlet, consult an electrician for replacement of the obsolete outlet.
10. Protect the power cord from being walked on or pinched particularly at plugs, convenience receptacles, and the point where they exit from the apparatus.
11. Only use attachments/accessories specified by the manufacturer.
12. Use only with the cart, stand, tripod, bracket, or table specified by the manufacturer, or sold with the apparatus. When a cart is used, use caution when moving the cart/apparatus combination to avoid injury from tip-over.
13. Unplug this apparatus during lightning storms or when unused for long periods of time.
14. Refer all servicing to qualified service personnel. Servicing is required when the apparatus has been damaged in any way, such as power-supply cord or plug is damaged, liquid has been spilled or objects have fallen into the apparatus, the apparatus has been exposed to rain or moisture, does not operate normally, or has been dropped.

### FCC Compliance Statement

This device complies with part 15 of the FCC rules. Operation is subject to the following two conditions:

- (1) This device may not cause harmful interference, and
- (2) This device must accept any interference received, including interference that may cause undesired operation.

**NOTE:** This equipment has been tested and found to comply with the limits for a Class B digital device, pursuant to Part 15 of the FCC Rules. These limits are designed to provide reasonable protection against harmful interference in a residential installation. This equipment generates, uses, and can radiate radio frequency energy and, if not installed and used in accordance with the instructions, may cause harmful interference to radio communications. However, there is no guarantee that interference will not occur in a particular installation.

If this equipment does cause harmful interference to radio or television reception, which can be determined by turning the equipment off and on, the user is encouraged to try to correct the interference by one or more of the following measures:

- Reorient or relocate the receiving antenna.
- Increase the separation between the equipment and receiver.
- Connect the equipment into an outlet on a circuit different from that to which the receiver is connected.
- Consult the dealer or an experienced radio/TV technician for help.

**CAUTION:** Any changes or modifications not expressly approved by the party responsible for compliance could void the user's authority to operate this equipment

**FCC WARNING:** This equipment may generate or use radio frequency energy, changes or modifications to this equipment may cause harmful interference unless the modifications are expressly approved in the instruction manual. The user could lose the authority to operate this equipment if an unauthorized change or modification is made.

**FCC RF Radiation Exposure Statement:** This equipment complies with FCC radiation exposure limits set forth for an uncontrolled environment. This equipment should be installed and operated with minimum distance 20 cm between the radiator and your body. End users must follow the specific operating instructions for satisfying RF exposure compliance. This transmitter must not be co-located or operating in conjunction with any other antenna or transmitter.

**CAUTION:** Regulations of the FCC and FAA prohibit airborne operation of radio-frequency wireless devices because their signals could interfere with critical aircraft instruments.

**Responsible Party:**  
LG Electronics USA, Inc. 1000 Sylvan Avenue  
Englewood Cliffs, NJ 07632  
TEL.: +1-800-243-0000

LG Customer Information Center

1-800-243-0000 USA, Consumer  
1-888-865-3026 USA, Commercial

Register your product Online!  
[www.lg.com](http://www.lg.com)

