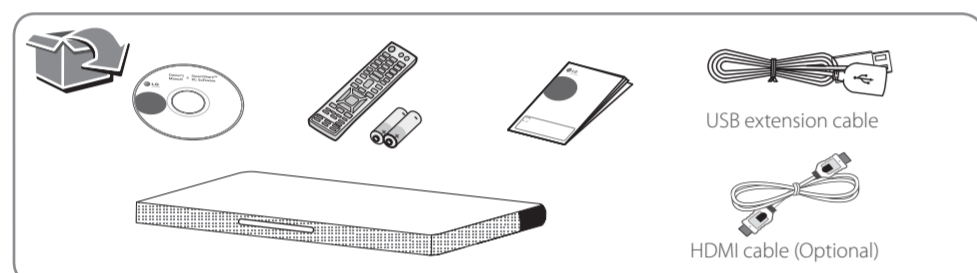


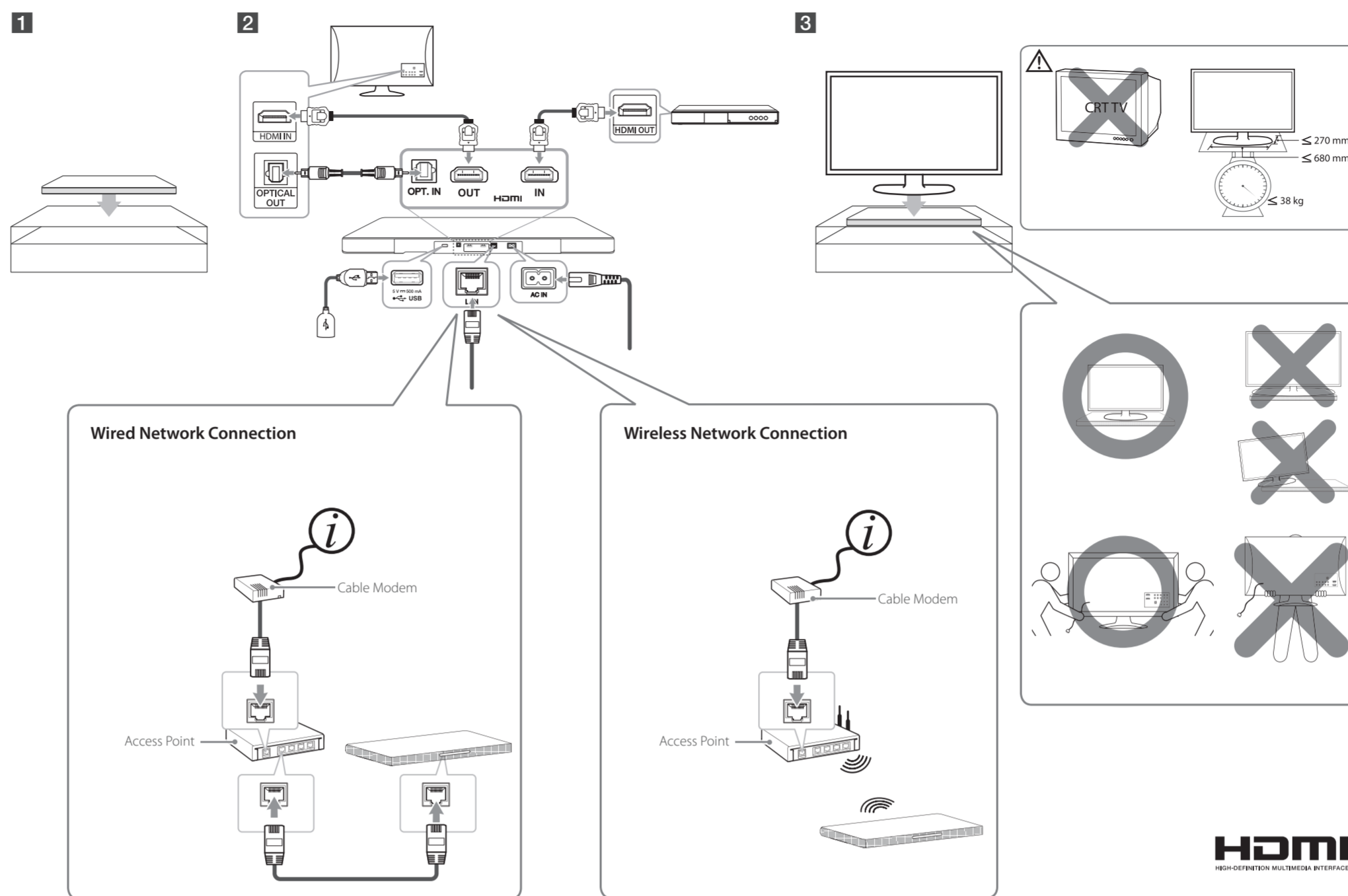
ENGLISH | SIMPLE MANUAL

An extended Owner's Manual that contains information on the advanced features is located on the CD-ROM provided in an electronic version. To read these files, you will need to use a Personal Computer (PC) equipped with a CD-ROM drive. Some of the content in this manual may differ from your unit.



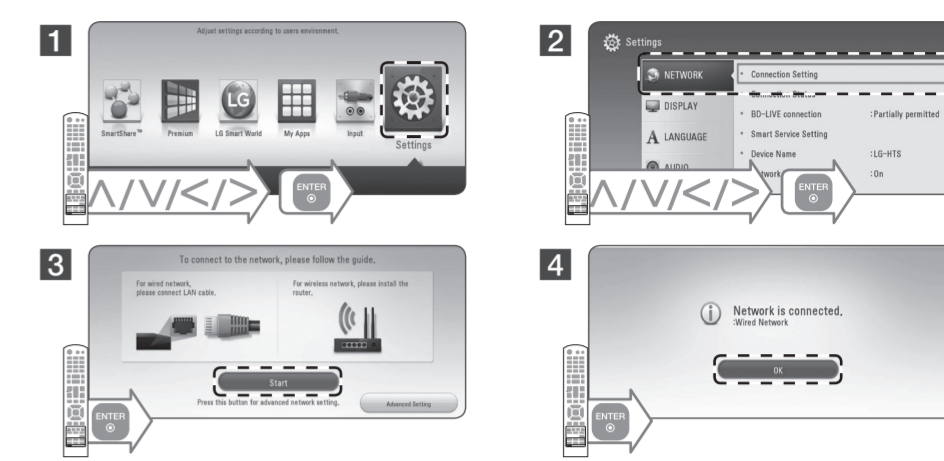
www.lg.com

Installation

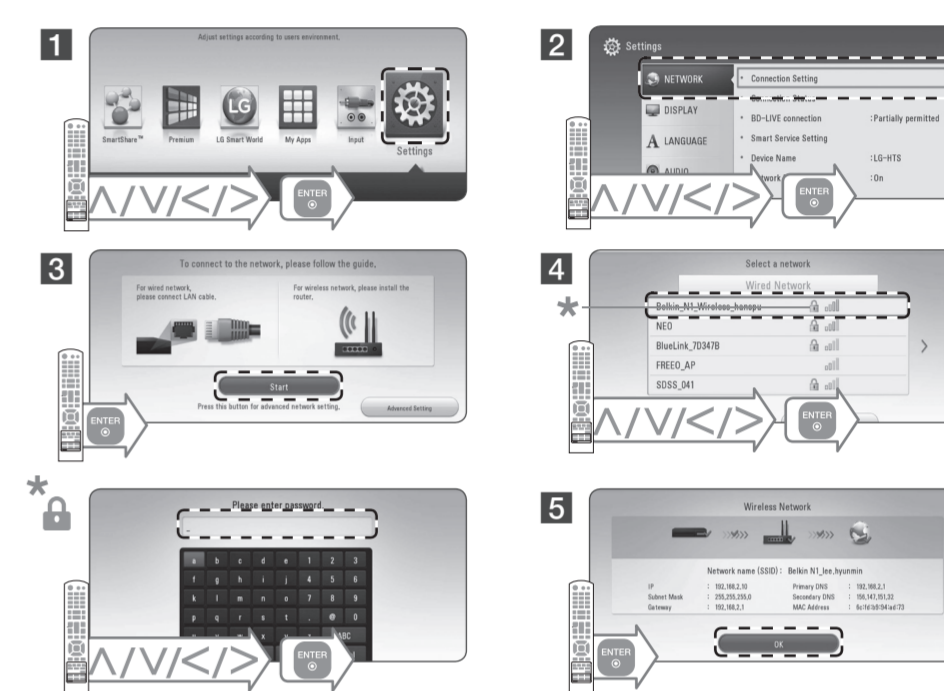


Network Settings

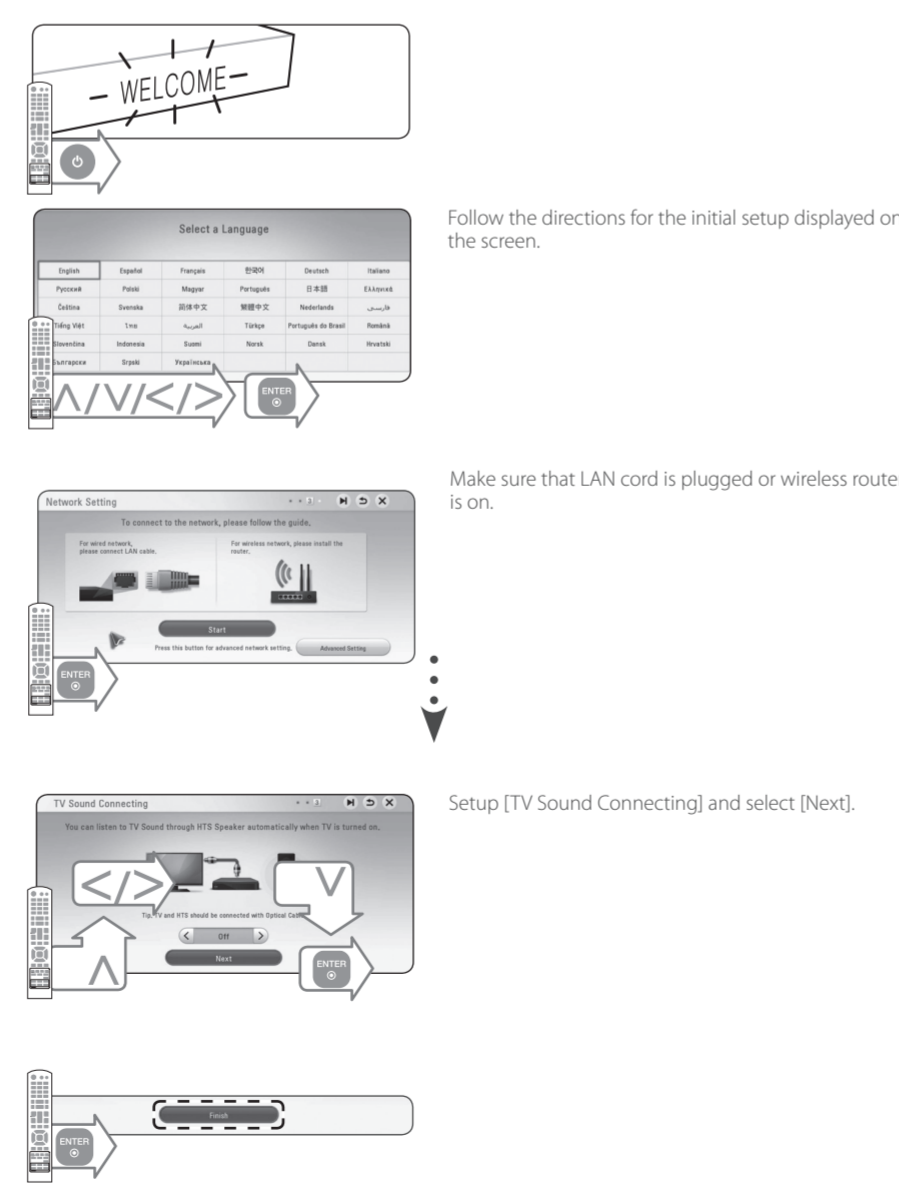
Wired Network



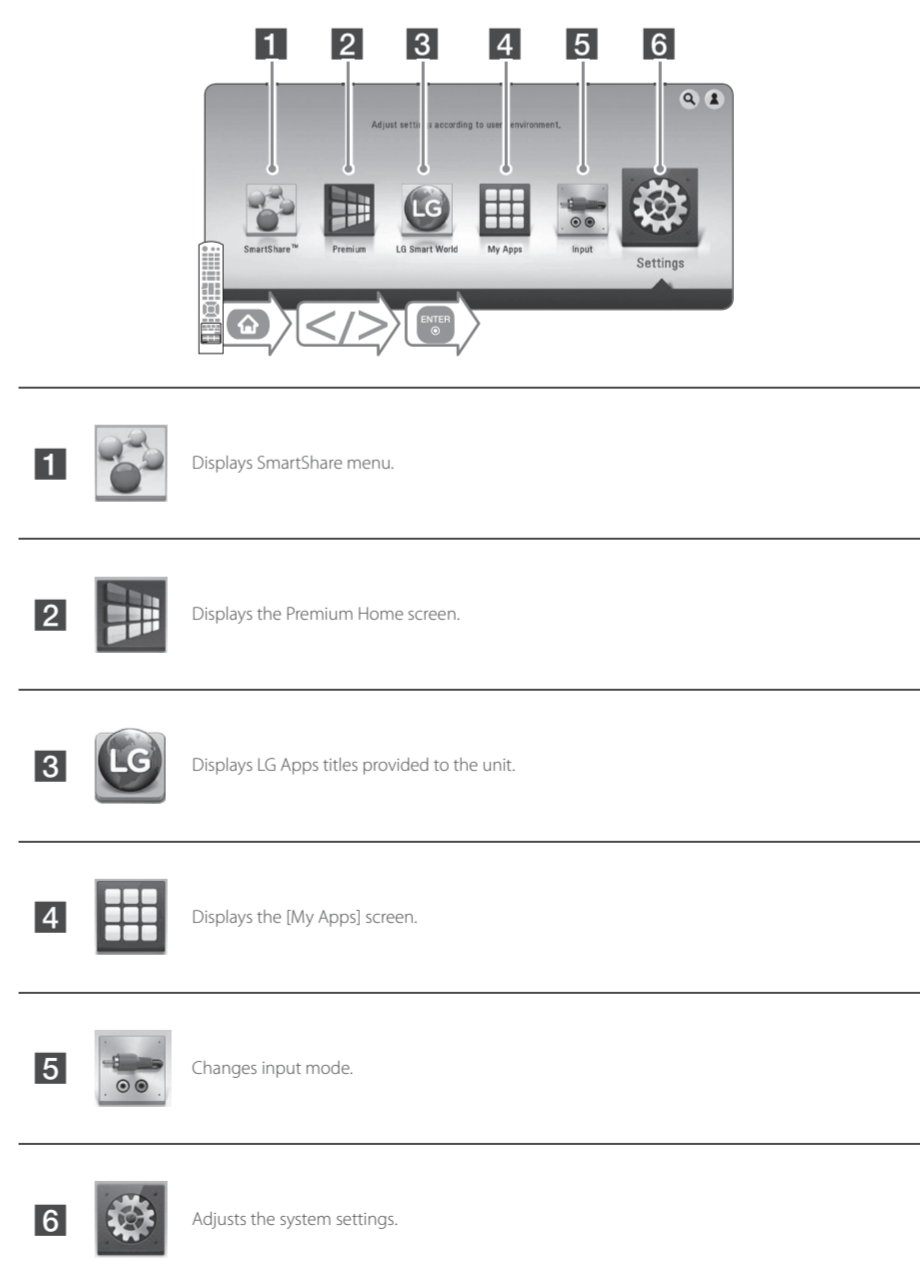
Wireless Network



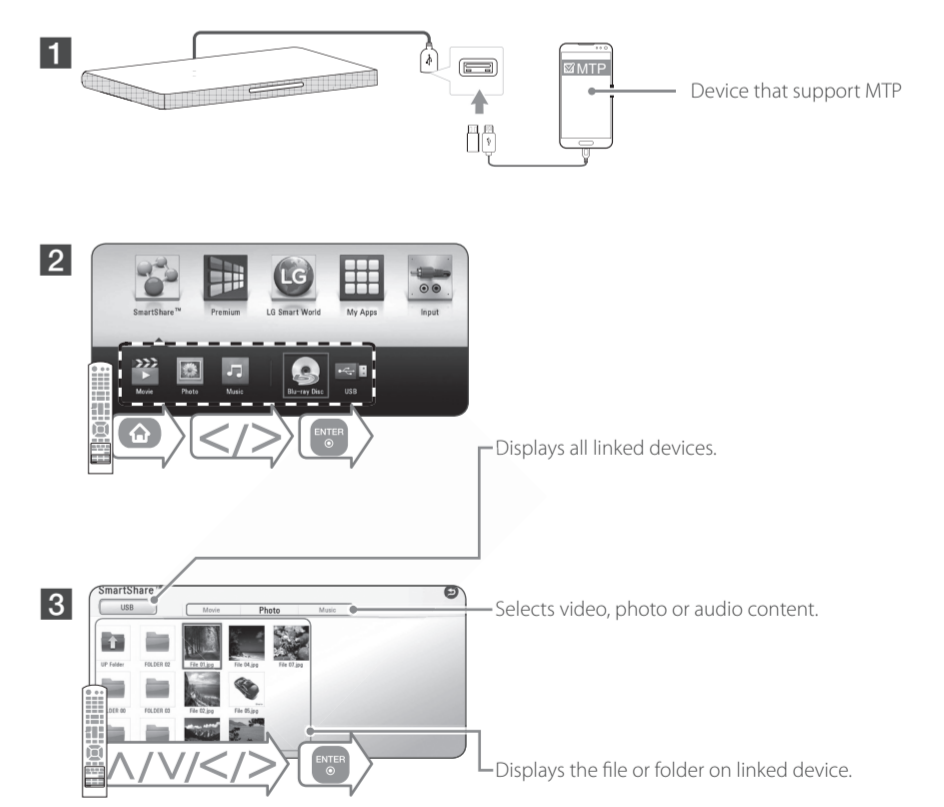
Initial Setup



Using HOME menu



Disc, Data Playback





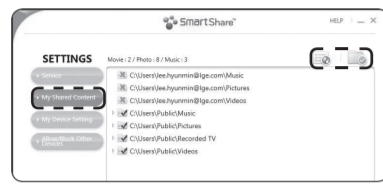
Network Playback



SmartShare PC software Installation

1 Install SmartShare PC software.

2 Run the program, and set the share folder you want.

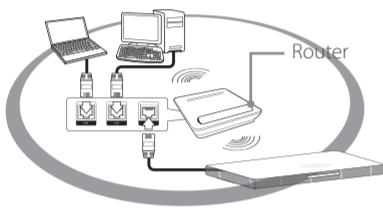


3 Turn on the media server for using S/W

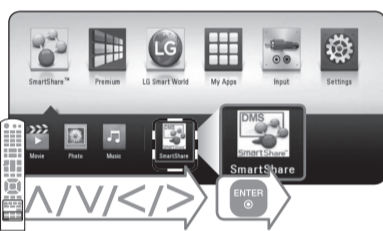


SmartShare Network Playback

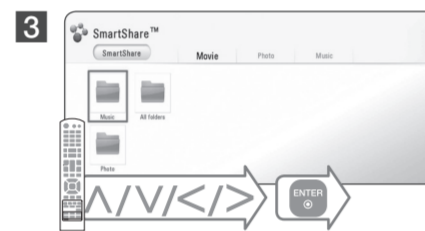
1 Check the network connection and settings.



2



3



Additional Information

Customer Support

You can update the Player using the latest software to enhance the products operation and/or add new features. To obtain the latest software for this player (if updates have been made), proceed the software updates as written or visit <http://www.lg.com> or contact LG Electronics customer care center.

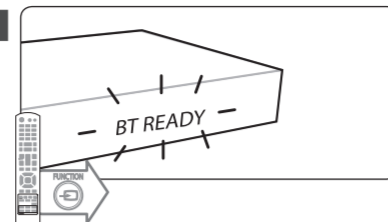
Open source software notice

To obtain the corresponding source code under GPL, LGPL and other open source licenses, please visit <http://opensource.lge.com>. All referred license terms, warranty disclaimers and copyright notices are available to download with the source code.

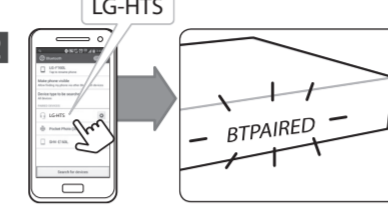


Using Bluetooth

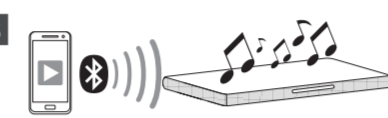
1 Select the Bluetooth function.



2 Set on the bluetooth and Select "LG-HTS" on your bluetooth device.

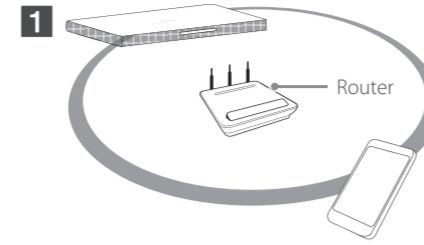


3 Play music on your bluetooth device.



Enjoying Private Sound

1 Make sure that mobile device is connected to the same Wi-Fi network as this player.



2 Turn on the mobile device LG AV Remote App is Installed and run LG AV Remote App.

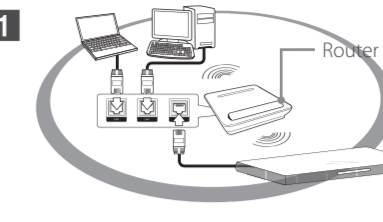


! Not all modes support sound privacy and pairing multiple devices is not available.



Software Update

1 Check the network connection and settings.



2 Select [Update] in the [Settings] -> [OTHERS] -> [Software] then follow the directions on the screen.



Specification

ENGLISH

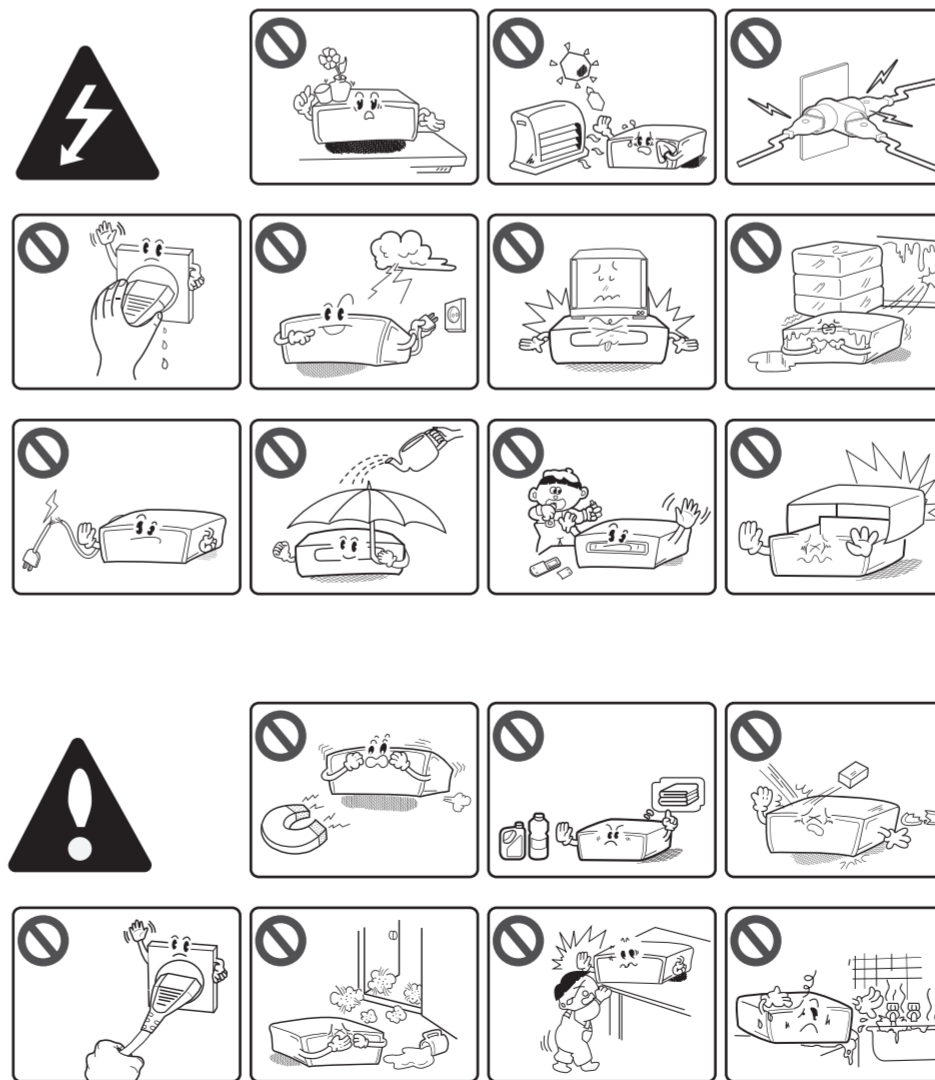
Power requirements	Refer to main label.
Power consumption	Refer to main label.
Dimensions (W x H x D)	Approx. 700 mm x 39.5 mm x 320 mm
Net Weight (Approx.)	4.6 kg
Bus Power Supply (USB)	5 V 500 mA

Design and specifications are subject to change without notice.

NOTICE: For Product Identification and Compliance/Safety labeling information please refer to Main label on the bottom of unit.



Safety Information



CAUTION RISK OF ELECTRIC SHOCK DO NOT OPEN

CAUTION: TO REDUCE THE RISK OF ELECTRIC SHOCK DO NOT REMOVE COVER (OR BACK) NO USER-SERVICEABLE PARTS INSIDE. REFER SERVICING TO QUALIFIED SERVICE PERSONNEL.

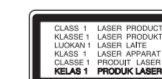
This lightning flash with arrowhead symbol within an equilateral triangle is intended to alert the user to the presence of uninsulated dangerous voltage within the product's enclosure that may be of sufficient magnitude to constitute a risk of electric shock to persons.

The exclamation point within an equilateral triangle is intended to alert the user to the presence of important operating and maintenance (servicing) instructions in the literature accompanying the product.

WARNING: TO PREVENT FIRE OR ELECTRIC SHOCK HAZARD, DO NOT EXPOSE THIS PRODUCT TO RAIN OR MOISTURE.

WARNING: Do not install this equipment in a confined space such as a book case or similar unit.

CAUTION: Do not block any ventilation openings. Install in accordance with the manufacturer's instructions. Slots and openings in the cabinet are provided for ventilation and to ensure reliable operation of the product and to protect it from over heating. The openings shall be never be blocked by placing the product on a bed, sofa, rug or other similar surface. This product shall not be placed in a built-in installation such as a bookcase or rack unless proper ventilation is provided or the manufacturer's instruction has been adhered to.



CAUTION: This product employs a Laser System. To ensure proper use of this product, please read this owner's manual carefully and retain it for future reference. Shall the unit require maintenance, contact an authorized service center.

Use of controls, adjustments or the performance of procedures other than those specified herein may result in hazardous radiation exposure.

CAUTION concerning the Power Cord To disconnect power from the mains, pull out the mains cord plug. When installing the product, ensure that the plug is easily accessible.

CAUTION: The apparatus shall not be exposed to water (dripping or splashing) and no objects filled with liquids, such as vases, shall be placed on the apparatus.

This device is equipped with a portable battery or accumulator. Safety way to remove the battery or the battery from the equipment: Remove the old battery or battery pack, follow the steps in reverse order than the assembly. To prevent contamination of the environment and bring on possible threat to human and animal health, the old battery or the battery put it in the appropriate container at designated collection points. Do not dispose of batteries or battery together with other waste. It is recommended that you use local, free reimbursement systems batteries and accumulators. The battery shall not be exposed to excessive heat such as sunshine, fire or the like.

