



**LG**

Life's Good

# Guides on Using Product Functions (Windows, Mac)

Please read this manual carefully before operating your set and retain it for future reference.

34UC97

[www.lg.com](http://www.lg.com)

## GUIDES ON USING PRODUCT FUNCTIONS (WINDOWS)

### System Requirements

Graphic card			Interface		
			Thunderbolt (⚡)	HDMI	DisplayPort
3440 x 1440	Intel	Over HD4400	○	○	○
	AMD	Over HD7000	○	○	○
	NVIDIA	Over GTX 650	○	○	○

- Thunderbolt (⚡) is supported in Windows 7, Windows 8 or later.
- In order to set the resolution to 3440 x 1440, you may be required to configure the custom settings from the graphics card control panel or update to the latest graphics card driver.
- HDMI supports a resolution of up to 3440 x 1440 @ 50 Hz. In order to use the resolution of 3440 x 1440 @ 60 Hz, use Thunderbolt (⚡) or DisplayPort.
- Support settings are subject to change.

### Precautions for Changing Resolution

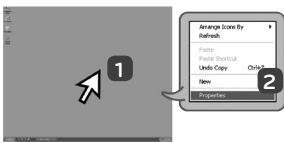
- Failing to set the graphics card to the recommended (optimal) resolution may result in blurred text, a dimmed screen, a truncated display area, or misalignment of the display.
- The configuration procedure may differ depending on your computer and/or operating system. Also, some graphics cards may not support certain resolutions. If this is the case, contact the manufacturer of the computer or graphics card for assistance.
- Some graphics cards may not support 3440 x 1440 resolution. It is recommended to use a graphics card that supports 3440 x 1440 resolution. Even when you set the resolution to 3440 x 1440 on your PC, the actual PC output may not support the resolution.



#### CAUTION

- The setting method can vary depending on the computer and the O/S. You may not be able to select certain resolutions depending on the graphics card performance. In such cases, please refer to the user's manual of the computer and/or graphics card.

### Windows XP



#### STEP 1

- 1 Move the mouse pointer to an empty area on the Windows screen (with no icons or task bars) and click the right mouse button.
- 2 When the pop-up menu appears, click the **Property**.



#### STEP 2

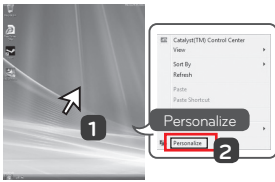
- 3 Choose the **Settings** menu and select an optimal resolution. (3440 x 1440)
- 4 Click the **Apply** button to complete resolution setting.



#### STEP 3

- 5 Select the **Advanced** button.
- 6 After selecting a monitor screen, select a vertical frequency of 50 Hz or 60 Hz in **Screen refresh rate (S)**.
- 7 Click the **Apply** button to complete optimal frequency setting.

## Windows Vista



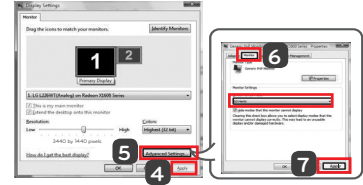
### STEP 1

- 1 Move the mouse pointer to an empty area on the Windows screen (with no icons or task bars) and click the right mouse button.
- 2 When the pop-up menu appears, click the **Personalize**.



### STEP 2

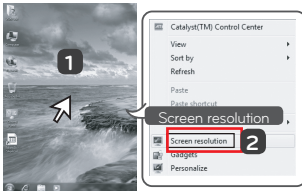
- 3 Choose the **Display Settings** menu and select an optimal resolution. (3440 x 1440)



### STEP 3

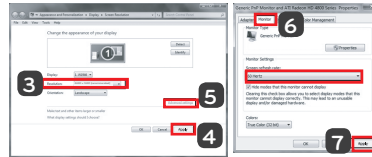
- 4 Click the **Apply** button to complete resolution setting.
- 5 Select the **Advanced** button.
- 6 After selecting a monitor screen, select a vertical frequency of 50Hz or 60Hz in **Screen refresh rate (S)**.
- 7 Click the **Apply** button to complete optimal frequency setting.

## Windows 7, Windows 8



### STEP 1

- 1 Move the mouse pointer to an empty area on the Windows screen (with no icons or task bars) and click the right mouse button.
- 2 When the pop-up menu appears, click the **Screen resolution**.



### STEP 2

- 3 Choose the **Settings** menu and select an optimal resolution. (3440 x 1440)
- 4 Click the **Apply** button to complete resolution setting.

### STEP 3

- 5 Select the **Advanced** button.
- 6 After selecting a monitor screen, select a vertical frequency of 50 Hz or 60 Hz in **Screen refresh rate (S)**.
- 7 Click the **Apply** button to complete optimal frequency setting.

## LG Monitor Software Introduction / System Requirements

Software	Installation Priority (required/optional)	Supported Interface			Supported OS			
		Tunderbolt (⚡)	DisplayPort	HDMI	Win XP (Thunderbolt excluded)	Win Vista (Thunderbolt excluded)	Win 7	Win 8
Screen Split	Optional	○	○	○	○ (32 bit)	○ (32 bit)	○	○
Monitor Driver	Optional	○	○	○	○	○	○	○

- **Screen Split** Automatically splits the monitor screen into the desired layouts.
- The software listed above can be installed using the CD provided with the product or downloaded as the latest version from the LG Electronics website.
- **Graphics card** Use a graphics card that supports 3440 x 1440 resolution.

## Monitor Driver

- **Installation priority (required/optional)** Optional
- **Usage** The resolution and frequency are adjusted for the monitor.

### How to Install

- Installing with the CD provided.  
Insert the user manual CD provided in the product box into the PC's CD drive and install the driver program.
- Downloading from the LG Electronics website.  
Visit the LG Electronics website ([www.lg.com](http://www.lg.com)) and download the latest driver for your model.

# Screen Split (MONITOR Screen Split Software)

- **Installation priority (required/optional)** Optional
- **Usage** Automatically splits the monitor screen into desired layouts (2 sections, 3 sections, or 4 sections).

## How to Install

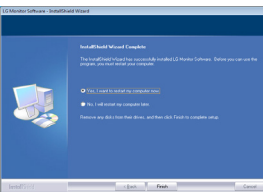
- Installing with the CD provided.  
Insert the software CD provided in the product box into the PC's CD drive and install the Screen Split.
- Downloading from the LG Electronics website.  
Visit the LG Electronics website ([www.lg.com](http://www.lg.com)) and download the latest software for your model.



On the software CD's main screen, select Screen Split.



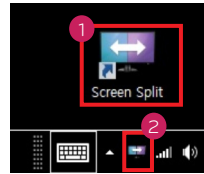
Check **I accept the terms of the agreement** on the License Agreement screen and then click on the **Next** button.



When the installation is complete, restart the system.

## How to Run

- 1 Double-click on the shortcut icon on the desktop, or
- 2 Click on the tray icon at the bottom right of the PC screen.



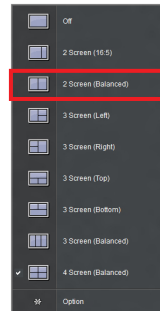
## How to Use

- For details on using the software, refer to the program's Help.

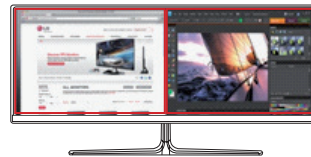
1. Click on the tray icon at the bottom right of the PC screen.



2. Select a screen layout.



3. The screen split layout is applied.

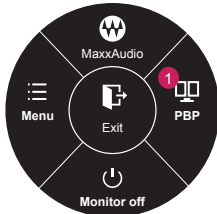


## Dual Link-Up (Monitor PBP Function)

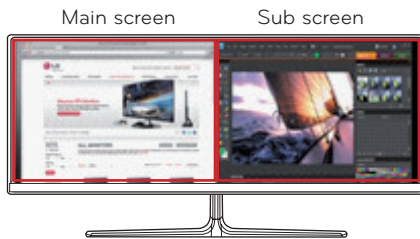
- **Usage** The monitor displays screens for 2 input sources simultaneously.
- The Dual Link-Up feature requires that one of the two input sources is connected via HDMI.
- Image shown may differ from the product that you are using.

### How to Run

1. Connect the monitor to two input sources.
2. Press the joystick button on the bottom of the monitor.
3. Enter PBP. <sup>1</sup>



4. Adjust the settings according to the input sources connected.
5. DUAL LINK-UP is applied.



PBP Connection		Sub screen (Right)			
		HDMI 1	HDMI 2	DisplayPort	Tunderbolt (⚡)
Main screen (Left)	HDMI 1	-	○	×	×
	HDMI 2	○	-	×	×
	DisplayPort	○	○	-	×
	Tunderbolt (⚡)	○	○	×	-

- For details on using the software, refer to the product user manual.
- The product user manual is included on the CD provided and is available for download from the LG Electronics website.

## Guides on Using Product Functions (Mac)

### System Requirements

Graphic card		Interface		
		Tunderbolt (⚡)	HDMI	DisplayPort
3440 x 1440	Dual AMD FirePro D300 / D500 / D700	○	○	○

- In accordance with Mac, products may not support the recommended resolution or some features. For more information, refer to the support information card of Mac which is provided separately.
- You can connect (daisy-chain) up to two additional monitors through the Thunderbolt (⚡) of Mac product.
- In order to set the resolution to 3440 x 1440, you may be required to configure the custom settings from the graphics card control panel or update to the latest graphics card driver.
- HDMI supports a resolution of up to 3440 x 1440 @ 50 Hz. In order to use the resolution of 3440 x 1440 @ 60 Hz, use Thunderbolt (⚡) or DisplayPort.
- Support settings are subject to change.

### Precautions for Changing Resolution

- Failing to set the graphics card to the recommended (optimal) resolution may result in blurred text, a dimmed screen, a truncated display area, or misalignment of the display.
- The configuration procedure may differ depending on your computer and/or operating system. Also, some graphics cards may not support certain resolutions. If this is the case, contact the manufacturer of the computer or graphics card for assistance.
- Some graphics cards may not support 3440 x 1440 resolution. It is recommended to use a graphics card that supports 3440 x 1440 resolution. Even when you set the resolution to 3440 x 1440 on your PC, the actual PC output may not support the resolution.

### Mac

#### Step 1

1. On the Doc bar, click on the **System Preferences icon**.

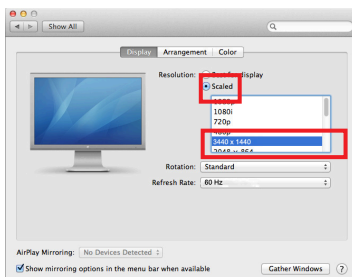


2. When the System Preferences window opens, select **Display**.



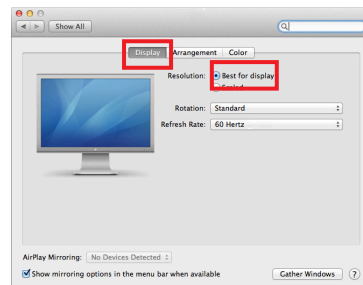
#### Step 2

3. Select the Scaled option and then select a desired resolution (recommended resolution: 3440 x 1440) and a refresh rate (50 Hz or 60 Hz). The settings are now configured.



#### Step 3

4. In the Display tab, select **Best for display**. The display is now set to the recommended resolution (3440 x 1440).



## Available Product and OS

Software	Installation Priority (required/optional)	Supported Interface			Supported OS	
		Tunderbolt (⚡)	DisplayPort	HDMI	Mac OS	Linux
Screen Split	Optional	○	○	○	○	X

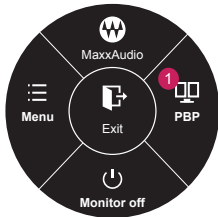
- **Screen Split** Automatically splits the monitor screen into the desired layouts.
- The software listed above can be installed using the CD provided with the product or downloaded as the latest version from the LG Electronics website.
- **Graphics card** Use a graphics card that supports 3440 x 1440 resolution.

## Dual Link-Up (Monitor PBP Function)

- **Usage** The monitor displays screens for 2 input sources simultaneously.
- The Dual Link-Up feature requires that one of the two input sources is connected via HDMI.
- Image shown may differ from the product that you are using.

### How to Run

1. Connect the monitor to two input sources.
2. Press the joystick button on the bottom of the monitor.
3. Enter PBP. <sup>1</sup>



4. Adjust the settings according to the input sources connected.
5. DUAL LINK-UP is applied.

Main screen                      Sub screen



PBP Connection		Sub screen (Right)			
		HDMI 1	HDMI 2	DisplayPort	Tunderbolt (⚡)
Main screen (Left)	HDMI 1	-	○	X	X
	HDMI 2	○	-	X	X
	DisplayPort	○	○	-	X
	Tunderbolt (⚡)	○	○	X	-

- For details on using the software, refer to the product user manual.
- The product user manual is included on the CD provided and is available for download from the LG Electronics website.



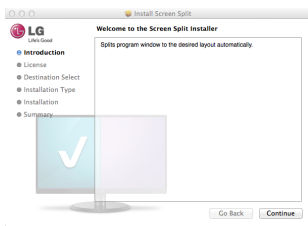
# Screen Split (Monitor Screen Split Software)

- **Installation priority (required/optional)** Optional
- **Usage** Automatically splits the monitor screen into desired layouts (2 sections, 3 sections, or 4 sections).

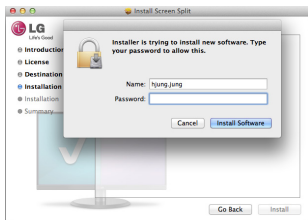
## How to Install

- Installing with the CD provided.  
Insert the software CD provided in the product box into the PC's CD drive and install the Screen Split.
- Downloading from the LG Electronics website.  
Visit the LG Electronics website ([www.lg.com](http://www.lg.com)) and download the latest software for your model.

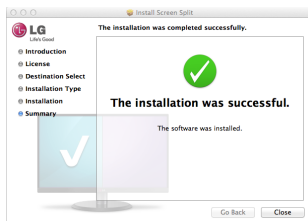
1. When the installation program starts, click on **Continue**.  
During the installation, you have to accept the license agreement.



2. Enter the Admin User password and click on **Install Software**.



3. Click on **Close** to finish the installation.



## How to Run

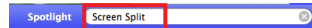
- Finder → Applications → Run Screen Split



- Click on the Screen Split icon on the menu bar.



- Search for **Screen Split** in Spotlight search.



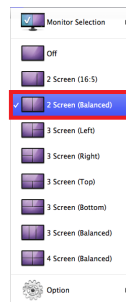
## How to Use

- For details on using the software, refer to the program's Help.

1. Click on the tray icon at the bottom right of the PC screen.



2. Select a screen layout.



3. The screen split layout is applied.



