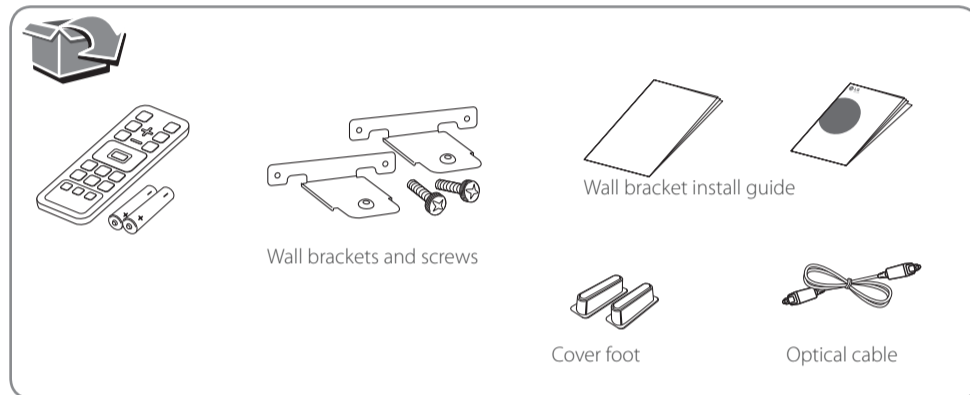


Wireless Sound Bar

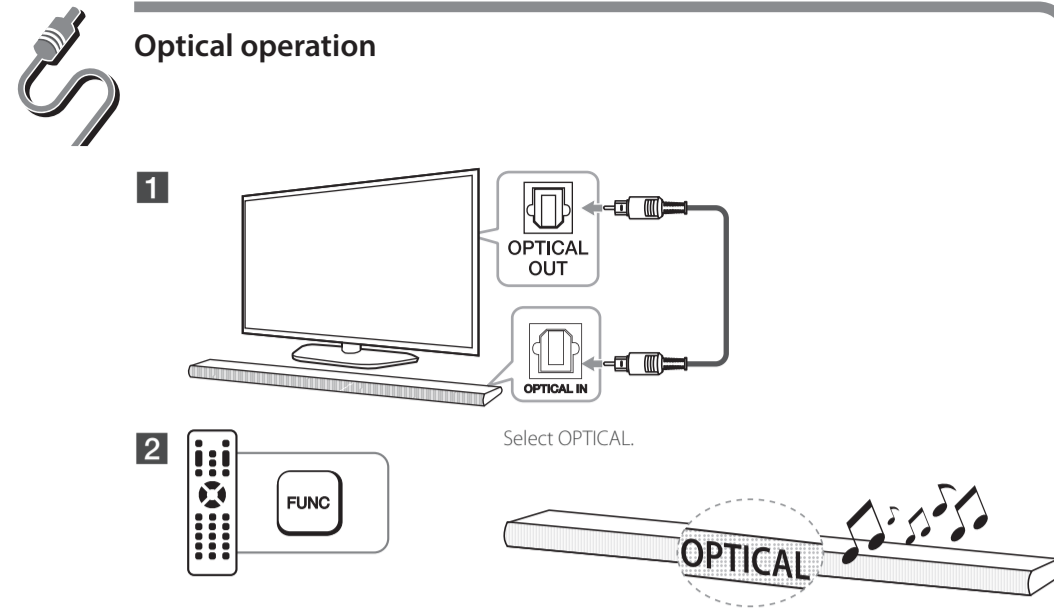
Model : LAS550H

ENGLISH | SIMPLE MANUAL (1 of 2)

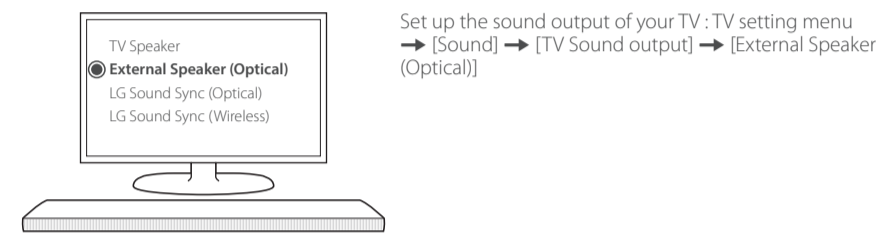
To view the instructions of advanced features, visit <http://www.lg.com> and then download Owner's Manual. Some of the content in this manual may differ from your unit.



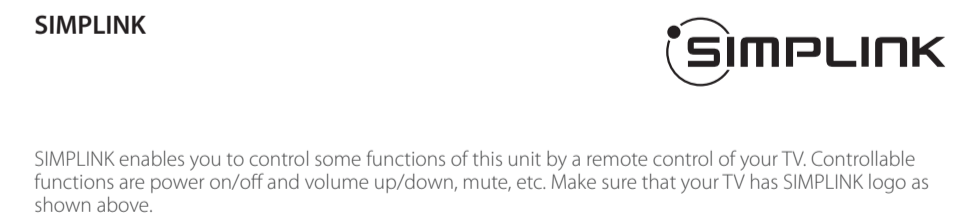
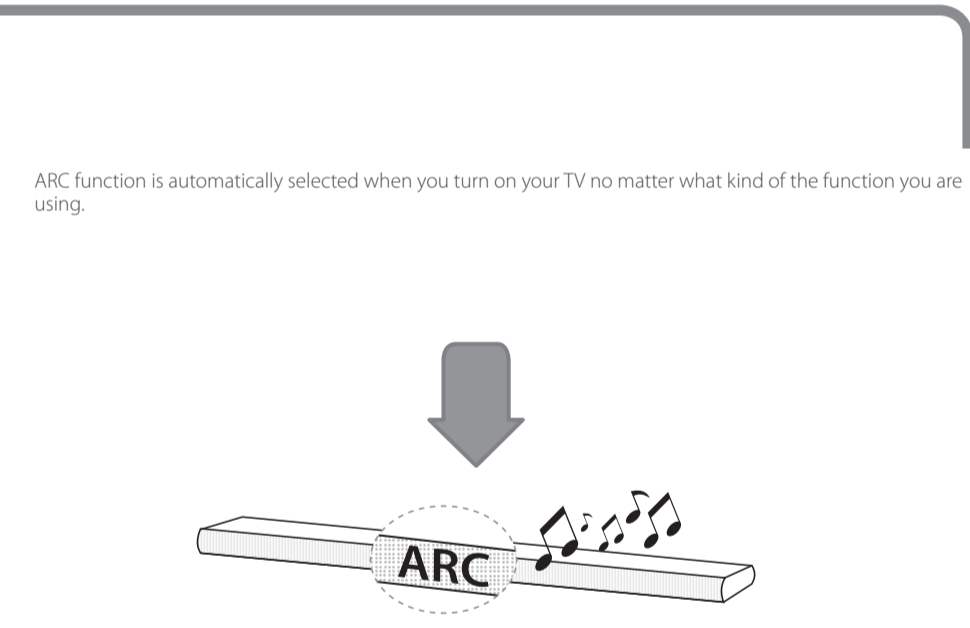
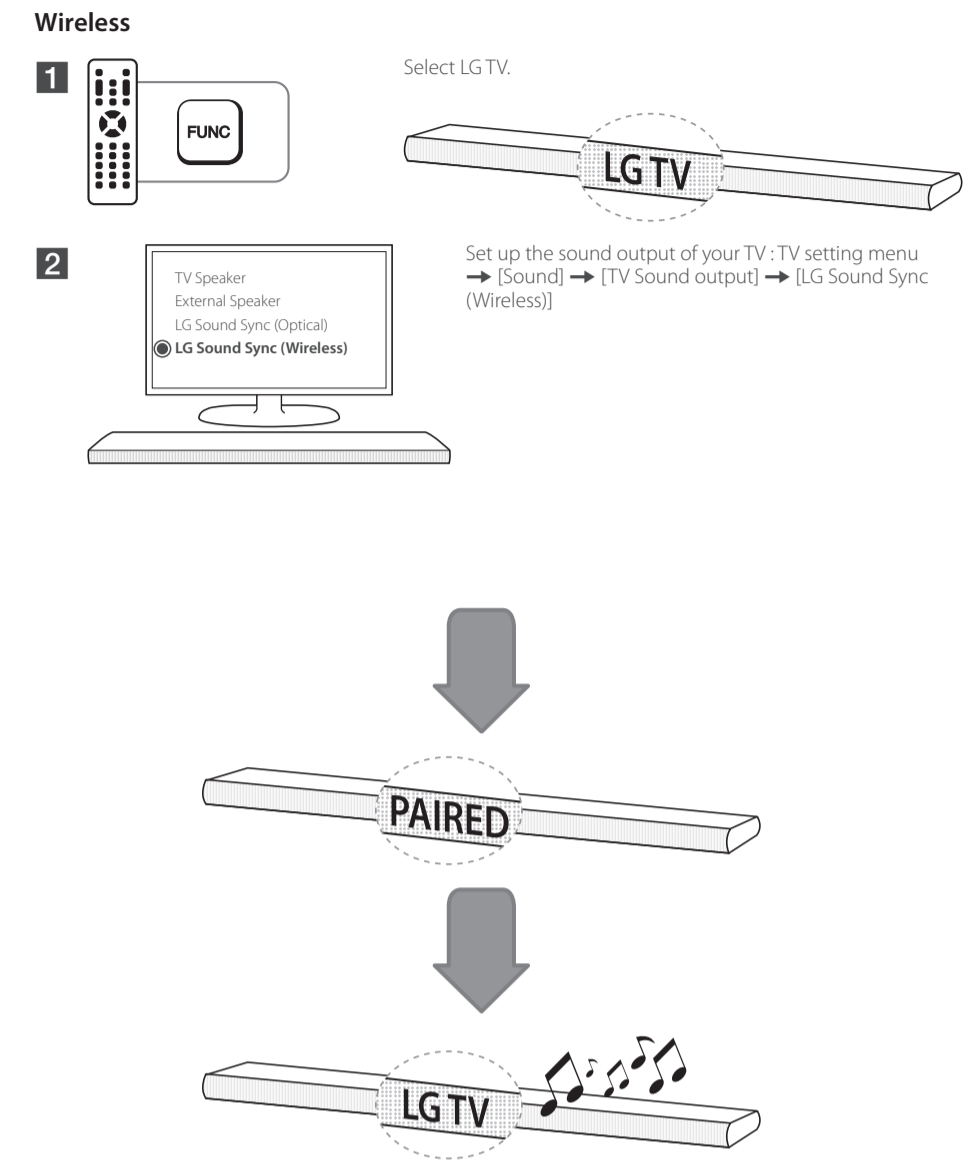
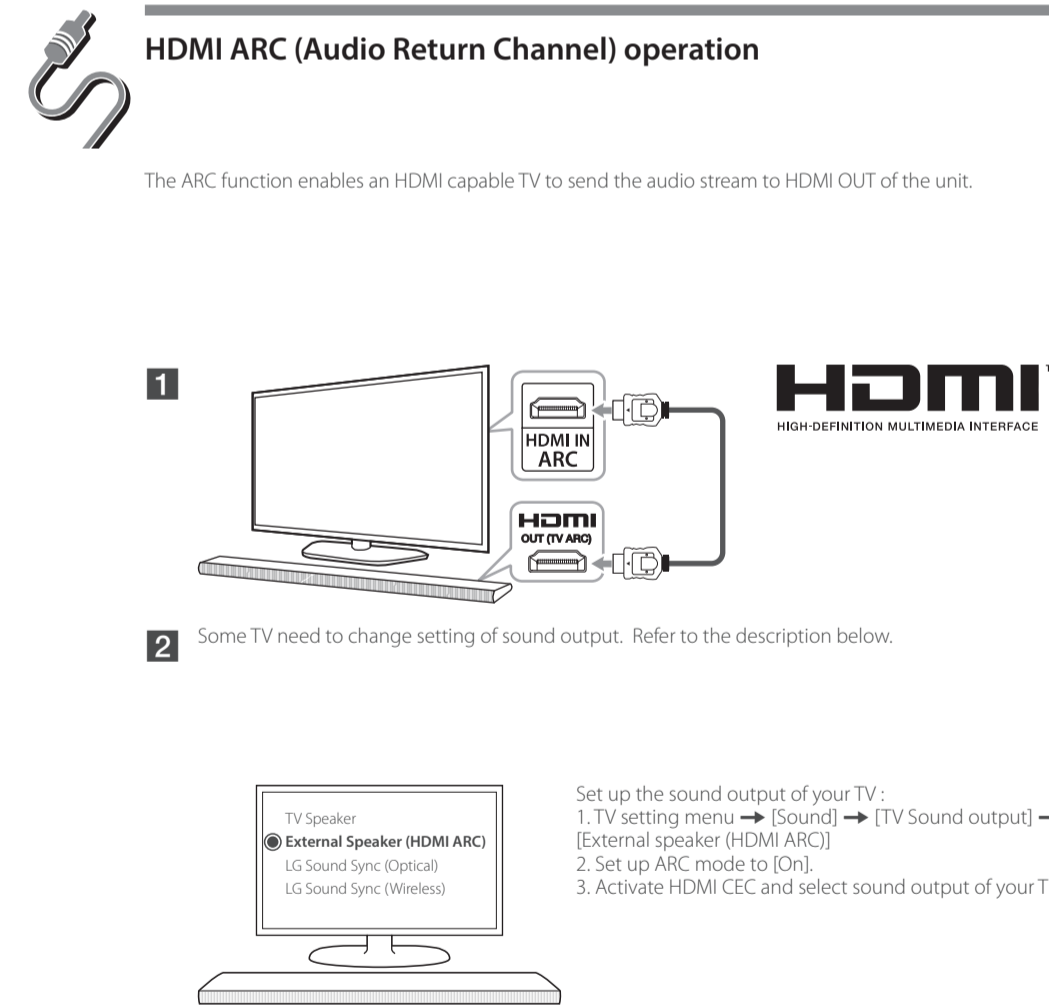
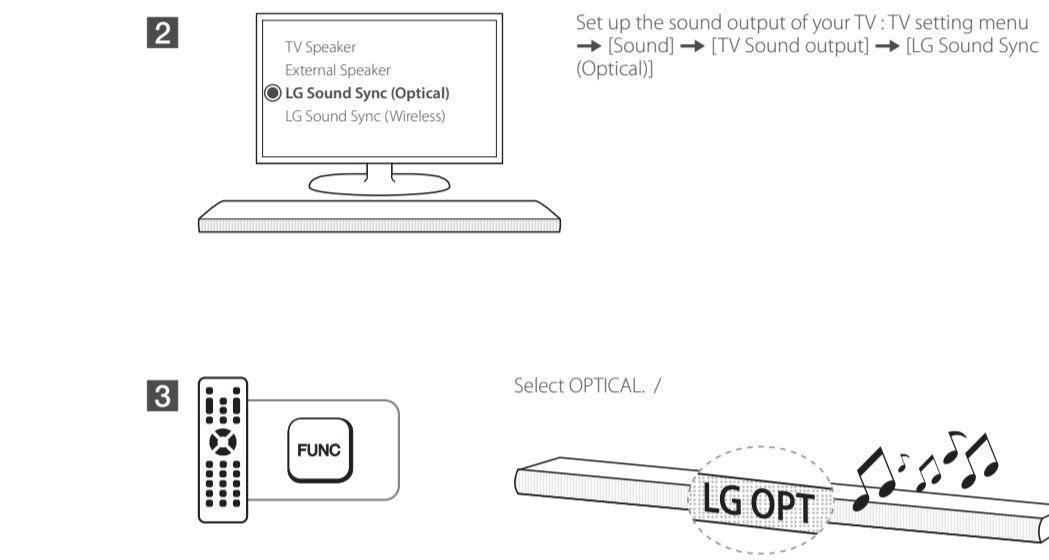
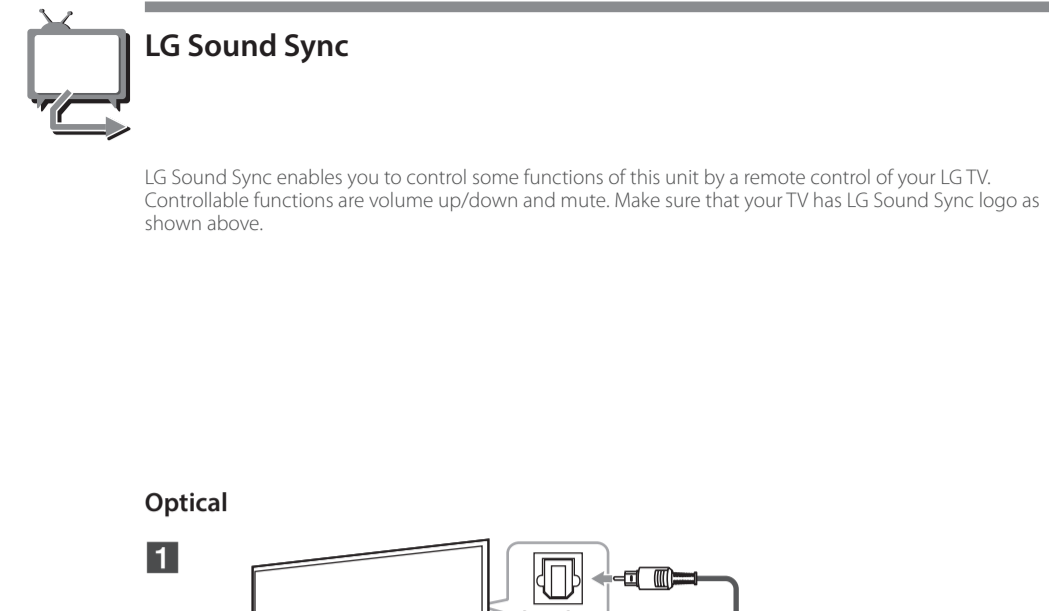
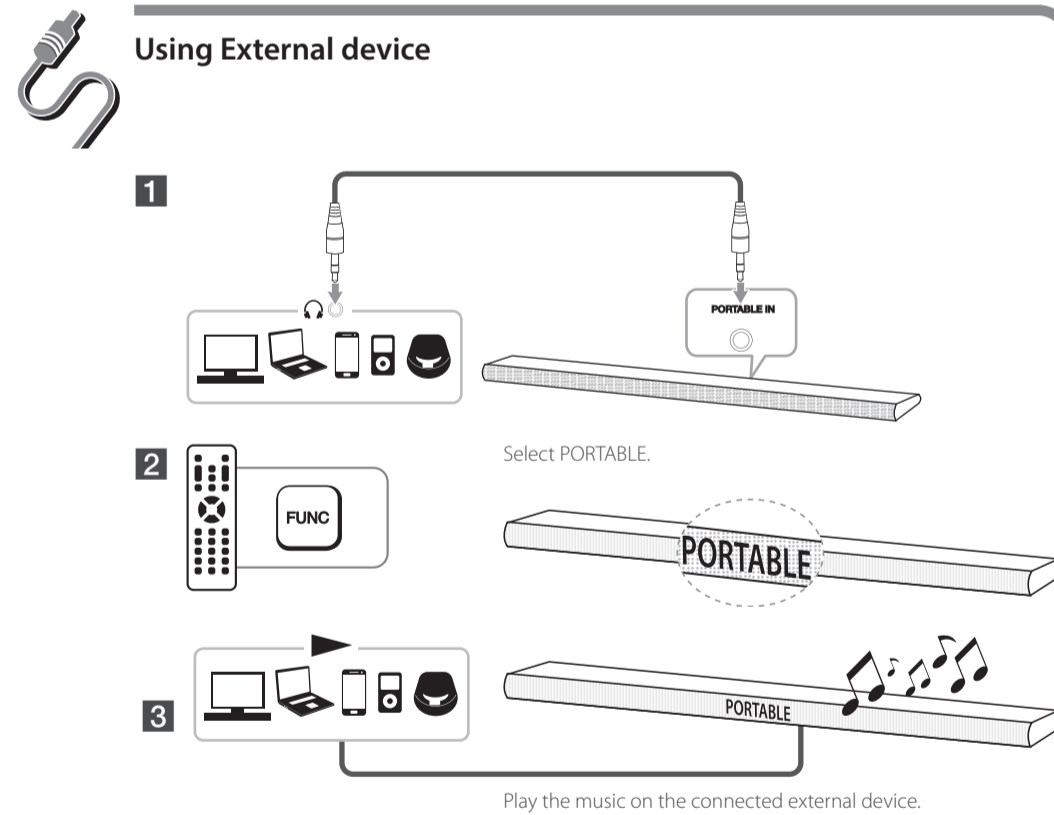
www.lg.com



1 Some TV need to change setting of sound output. Refer to the description below.

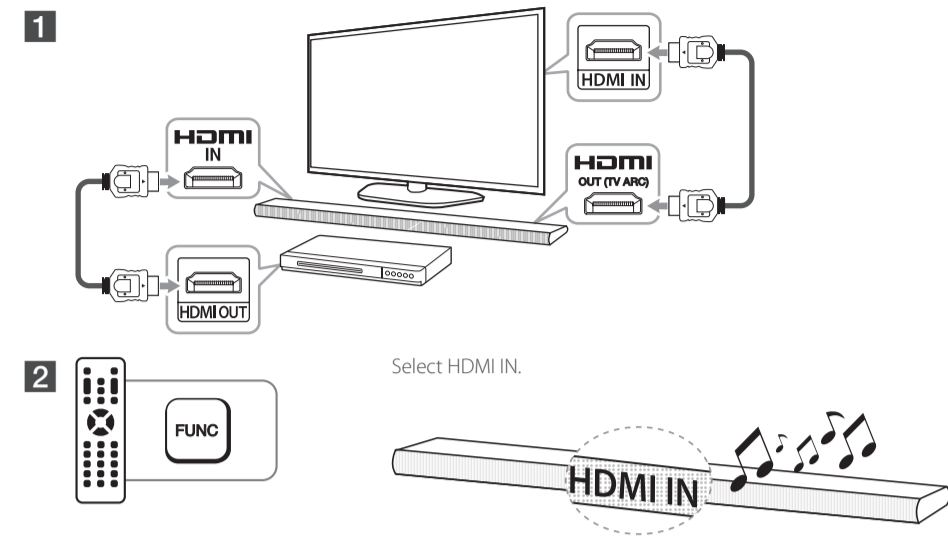


1 Details of TV setting menu vary depending on the manufacturers or models of your TV.



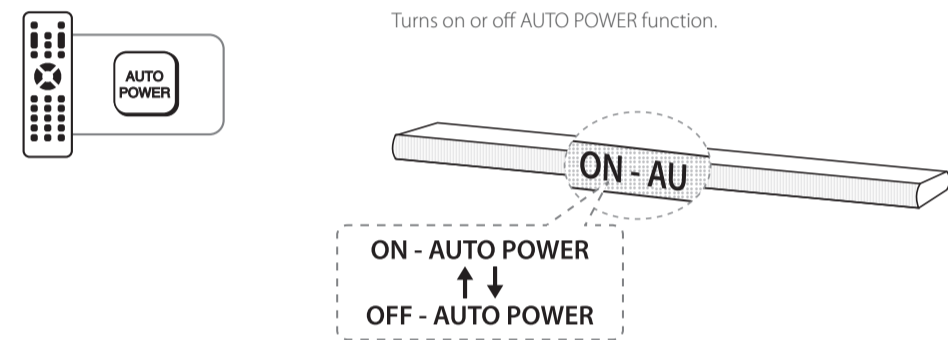


HDMI operation



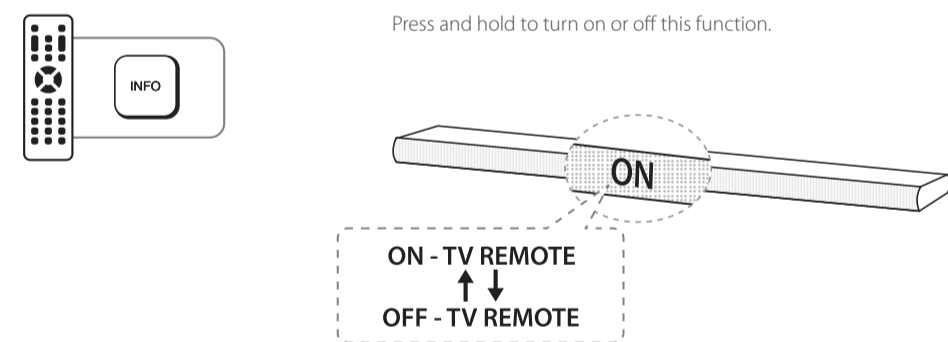
Auto power On/Off

This unit automatically turns on by an input source : Optical, LG TV or **Bluetooth**.



Using your TV remote control

You can control some functions of this unit by your TV remote control even in other company's product. Controllable functions are volume up/down and mute.

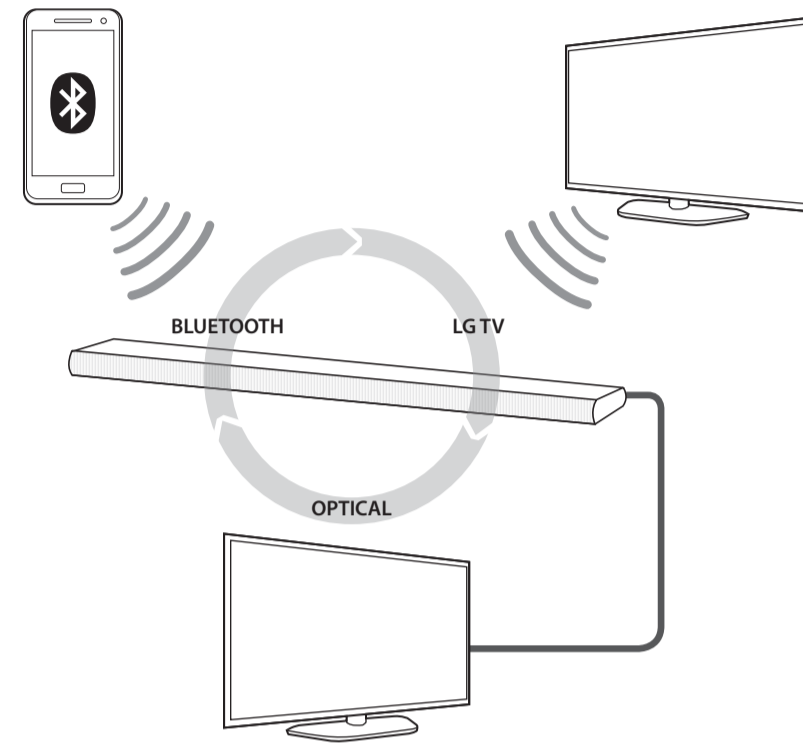


- Supported TV brands
LG Panasonic Philips Samsung Sharp Sony Toshiba Vizio
- Make sure that the sound output of your TV is set to [External speaker].
- Depending on the remote control, this function may not work well.

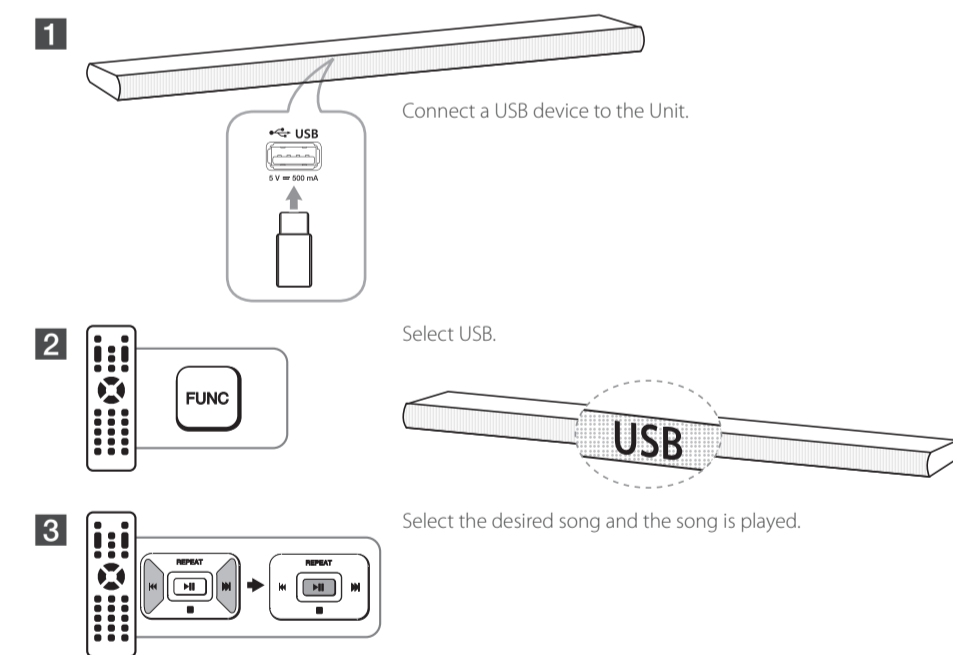


Auto Function Change

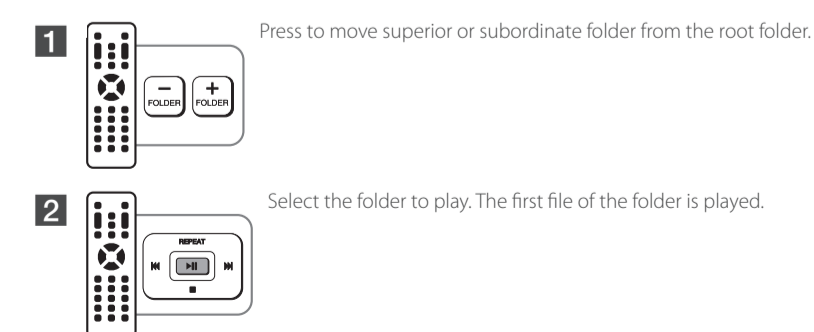
This unit recognizes input signals such as optical, **Bluetooth** and LG TV and then changes suitable function automatically.



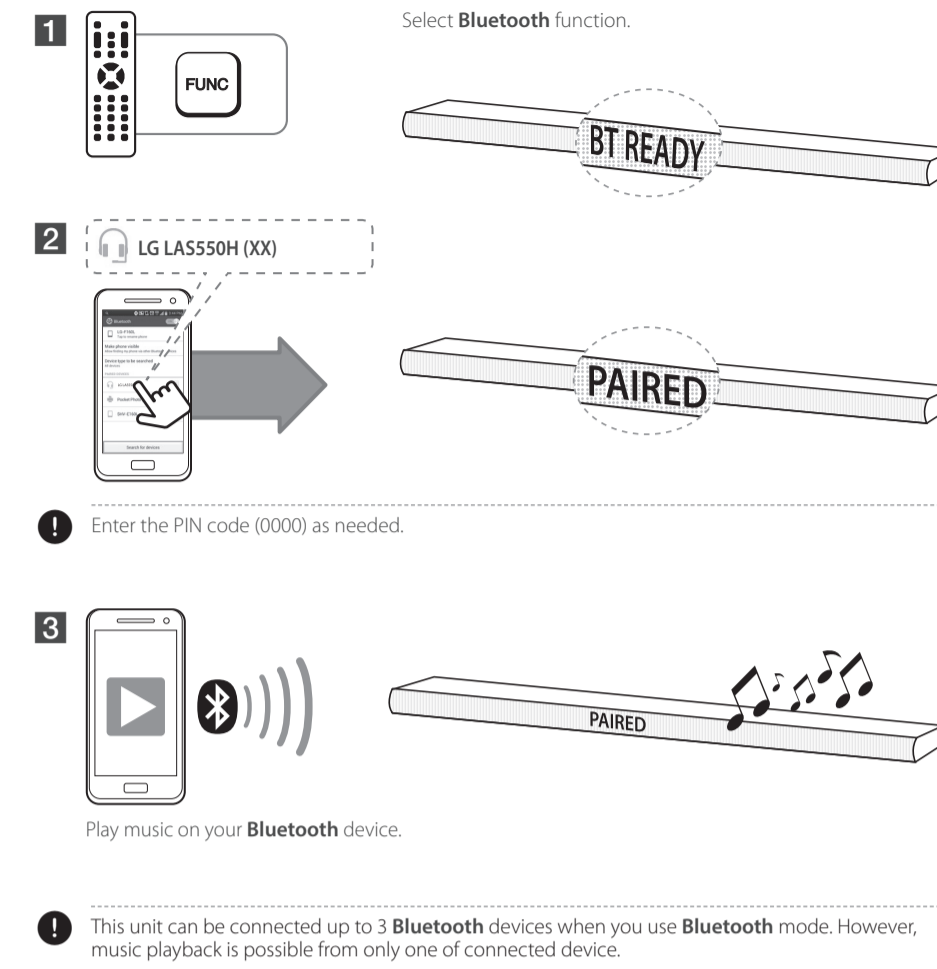
Data Playback



File Searching

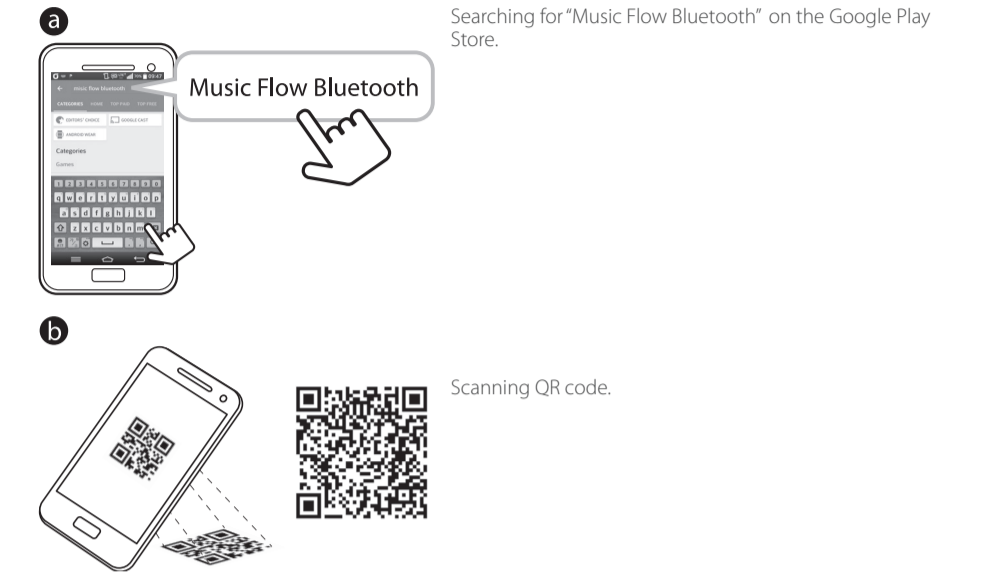


Using BLUETOOTH®

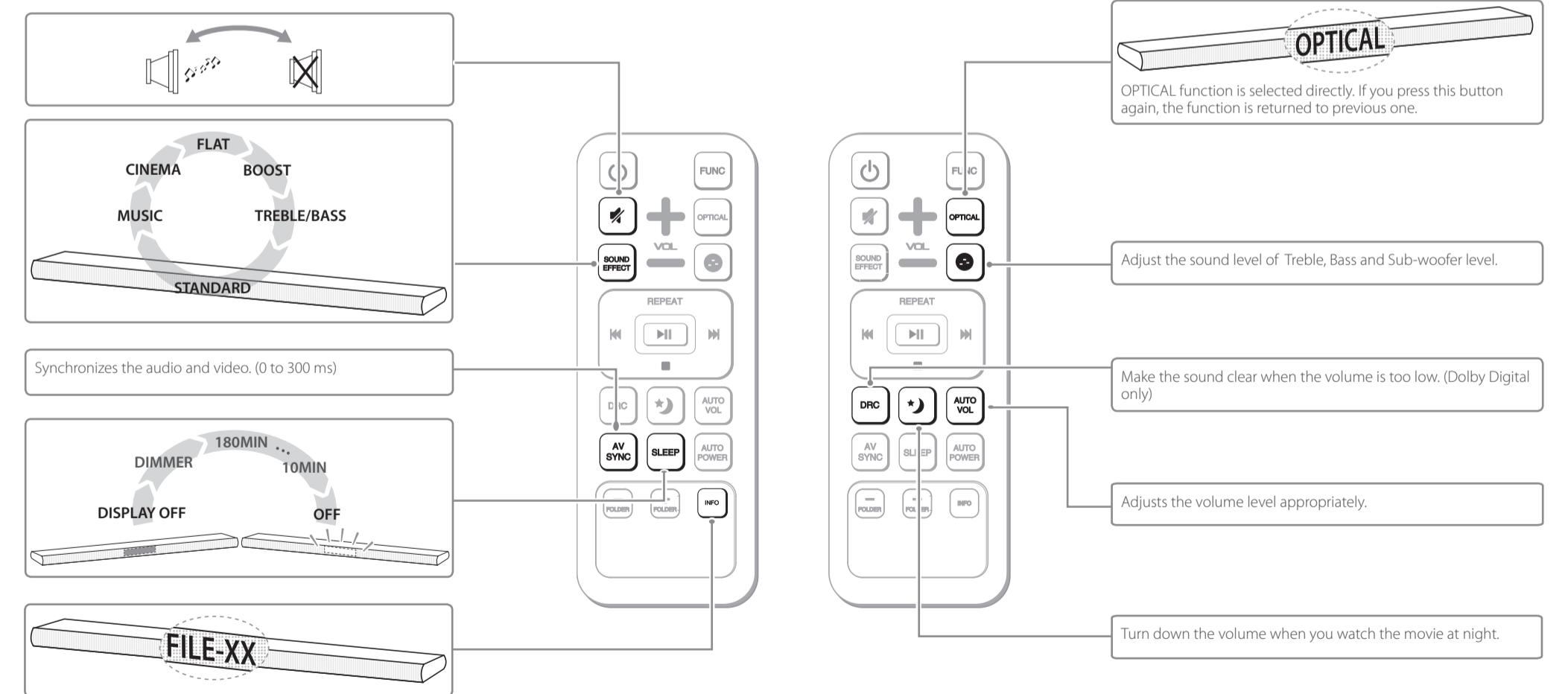


Using "Music Flow Bluetooth" App

To use this unit more comfortably, install "Music Flow Bluetooth" on your **Bluetooth** devices. Select a way of installation (a or b).



Additional Feature



Wireless Sound Bar

Model : LAS550H

ENGLISH | SIMPLE MANUAL (2 of 2)

To view the instructions of advanced features, visit <http://www.lg.com> and then download Owner's Manual. Some of the content in this manual may differ from your unit.



www.lg.com



Installation

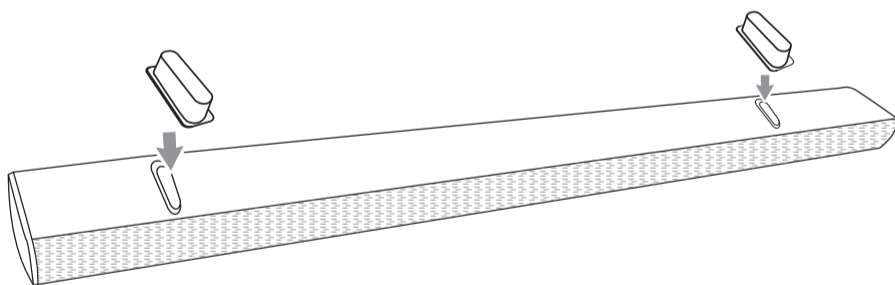
- 1
 - 2
 - 3

! Screws and wall plugs are not supplied.
 - 4
 - 5
- ! If your TV is not a wall-mountable, you do not have to use wall brackets. Just put the unit in front of your TV.
- ! Do not install this unit on Metallic furniture.



Installing cover foot

You can adjust height of the unit by using cover foot. (Foot height : 17 mm)



Additional Information

	File extensions /	<ul style="list-style-type: none"> • "mp3" • "ogg" • "wav" 	<ul style="list-style-type: none"> • "wma" • "flac"
USB	Maximum files	Under 1999	
	USB Flash Drive	Devices that support USB 2.0.	
Bluetooth	Codec	SBC	

- ! **How to disconnect the wireless network connection or the wireless device**
- Set up the AUTO POWER ON/OFF function to off and turn off the unit.

