



Guides on Using Product Functions (Windows, Mac)

Please read this manual carefully before operating your set and retain it for future reference.

29UC97
29UC97C

GUIDES ON USING PRODUCT FUNCTIONS (WINDOWS)

System Requirements

Graphic card			Interface		
			Thunderbolt (⚡) (29UC97 model only)	HDMI	DisplayPort
2560 x 1080	Intel	Over HD4400	○	○	○
	AMD	Over HD7000	○	○	○
	NVIDIA	Over GTX 650	○	○	○

- Thunderbolt (⚡) is supported in Windows 7, Windows 8.1, or later.
- In order to set the resolution to 2560 x 1080, you may be required to configure the custom settings from the graphics card control panel or update to the latest graphics card driver.
- The maximum supported resolution is 2560 x 1080 @ 60 Hz.
- Support settings are subject to change.

Precautions for Changing Resolution

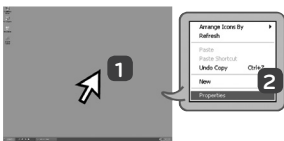
- Failing to set the graphics card to the recommended (optimal) resolution may result in blurred text, a dimmed screen, a truncated display area, or misalignment of the display.
- The configuration procedure may differ depending on your computer and/or operating system. Also, some graphics cards may not support certain resolutions. If this is the case, contact the manufacturer of the computer or graphics card for assistance.
- Some graphics cards may not support 2560 x 1080 resolution. It is recommended to use a graphics card that supports 2560 x 1080 resolution. Even when you set the resolution to 2560 x 1080 on your PC, the actual PC output may not support the resolution.



CAUTION

- The setting method can vary depending on the computer and the OS. You may not be able to select certain resolutions depending on the graphics card performance. In such cases, please refer to the user's manual of the computer and/or graphics card.

Windows XP



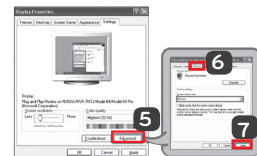
STEP 1

- 1 Move the mouse pointer to an empty area on the Windows screen (with no icons or task bars) and click the right mouse button.
- 2 When the pop-up menu appears, click the **Property**.



STEP 2

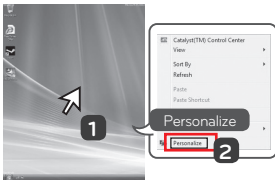
- 3 Choose the **Settings** menu and select an optimal resolution. (2560 x 1080)
- 4 Click the **Apply** button to complete resolution setting.



STEP 3

- 5 Select the **Advanced** button.
- 6 After selecting a monitor screen, select a vertical frequency of 60 Hz in **Screen refresh rate (S)**.
- 7 Click the **Apply** button to complete optimal frequency setting.

Windows Vista



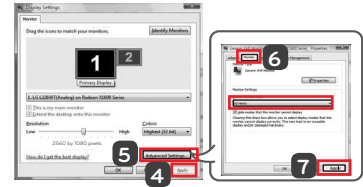
STEP 1

- 1 Move the mouse pointer to an empty area on the Windows screen (with no icons or task bars) and click the right mouse button.
- 2 When the pop-up menu appears, click the **Personalize**.



STEP 2

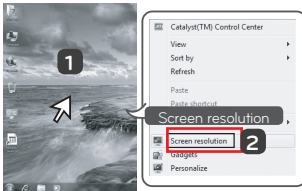
- 3 Choose the **Display Settings** menu and select an optimal resolution. (2560 x 1080)



STEP 3

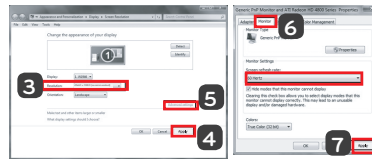
- 4 Click the **Apply** button to complete resolution setting.
- 5 Select the **Advanced** button.
- 6 After selecting a monitor screen, select a vertical frequency of 60 Hz in **Screen refresh rate (S)**.
- 7 Click the **Apply** button to complete optimal frequency setting.

Windows 7, Windows 8.1



STEP 1

- 1 Move the mouse pointer to an empty area on the Windows screen (with no icons or task bars) and click the right mouse button.
- 2 When the pop-up menu appears, click the **Screen resolution**.



STEP 2

- 3 Choose the **Settings** menu and select an optimal resolution. (2560 x 1080)
- 4 Click the **Apply** button to complete resolution setting.

STEP 3

- 5 Select the **Advanced** button.
- 6 After selecting a monitor screen, select a vertical frequency of 60 Hz in **Screen refresh rate (S)**.
- 7 Click the **Apply** button to complete optimal frequency setting.

LG Monitor Software Introduction / System Requirements

Software	Installation Priority (required/optional)	Supported Interface			Supported OS	
		Thunderbolt (⚡) (29UC97 model only)	DisplayPort	HDMI	Win 7 (32-bit/64-bit)	Win 8.1 (32-bit/64-bit)
Screen Split	Optional	○	○	○	○	○
Monitor Driver	Optional	○	○	○	○	○
Auto Resolution (29UC97 model only)	Required	○	○	○	○	○
Dual Controller	Optional	○	○	○	○	○
ASM Driver (29UC97 model only)	Required	○	X	X	○	○

- **Screen Split** Automatically splits the monitor screen into the desired layouts.
- **Auto Resolution** Automatically switches to the optimal resolution when the monitor is connected to the PC in PBP mode.
- **Dual Controller** Software that makes it possible to use a PC's keyboard and mouse to control other PCs connected to the same network (router).
- The software listed above can be installed using the CD provided with the product or downloaded as the latest version from the LG Electronics website.
- **Graphics card** Use a graphics card that supports 2560 x 1080 resolution.

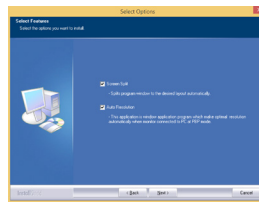
Installing LG monitor Software (29UC97 model only)

How to Install

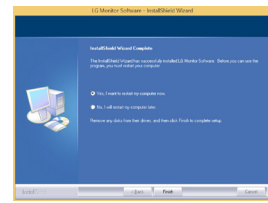
- Installing with the CD provided
Insert the manual CD provided in the product box into the PC's CD drive and install the LG Monitor Software. You can also choose to install Screen Split / Auto Resolution.
- Downloading from the LG Electronics website
Visit the LG Electronics website(www.lg.com) and download the latest software for your model.



On the manual CD's main screen, select LG Monitor Software.



In the feature selection step, choose to install programs.



Installation complete

Monitor Driver

- **Installation priority (required/optional)** Optional
- **Usage** The resolution and frequency are adjusted for the monitor.

How to Install

- Installing with the CD provided.
Insert the user manual CD provided in the product box into the PC's CD drive and install the driver program.
- Downloading from the LG Electronics website.
Visit the LG Electronics website (www.lg.com) and download the latest driver for your model.

ASM Driver (29UC97 model only)

- **Installation priority (required/optional)** Required
- **Usage** Driver file used when transferring data via Thunderbolt (⚡) port in Windows OS.

Screen Split (MONITOR Screen Split Software)

- **Installation priority (required/optional)** Optional
- **Usage** Automatically splits the monitor screen into desired layouts (2 sections, 3 sections, or 4 sections).

How to Install

29UC97

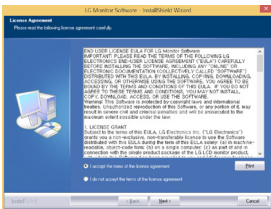
- Installing with the CD provided.
Insert the manual CD provided in the product box into the PC's CD drive and install the LG Monitor Software.
On the Select Options window, select Screen Split and continue.
- Downloading from the LG Electronics website.
Visit the LG Electronics website (www.lg.com) and download the latest software for your model.

29UC97C

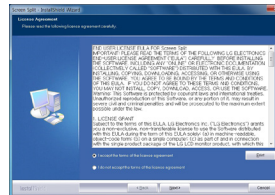
- Installing with the CD provided.
Insert the manual CD provided in the product box into the PC's CD drive and install the Screen Split.
- Downloading from the LG Electronics website.
Visit the LG Electronics website (www.lg.com) and download the latest software for your model.



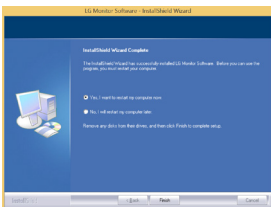
On the manual CD's main screen, select Screen Split.



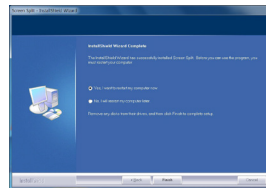
Check **I accept the terms of the agreement** on the License Agreement screen and then click on the **Next** button.



Check **I accept the terms of the agreement** on the License Agreement screen and then click on the **Next** button.



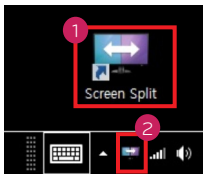
When the installation is complete, restart the system.



When the installation is complete, restart the system.

How to Run

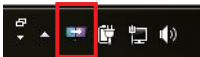
- 1 Double-click on the shortcut icon on the desktop, or
- 2 Click on the tray icon at the bottom right of the PC screen.



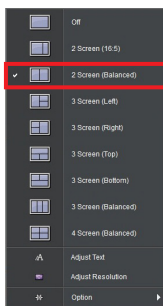
How to Use

- For details on using the software, refer to the program's Help.

1. Click on the tray icon at the bottom right of the PC screen.



2. Select a screen layout.



3. The screen split layout is applied.

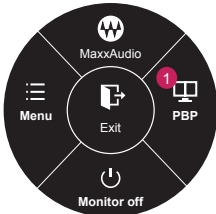


Dual Link-Up (Monitor PBP Function)

- **Usage** The monitor displays screens for 2 input sources simultaneously.
- The Dual Link-Up feature requires that one of the two input sources is connected via HDMI.
- Image shown may differ from the product that you are using.

How to Run

1. Connect the monitor to two input sources.
2. Press the joystick button on the bottom of the monitor.
3. Enter **1** PBP.



4. Adjust the settings according to the input sources connected.
5. DUAL LINK-UP is applied.

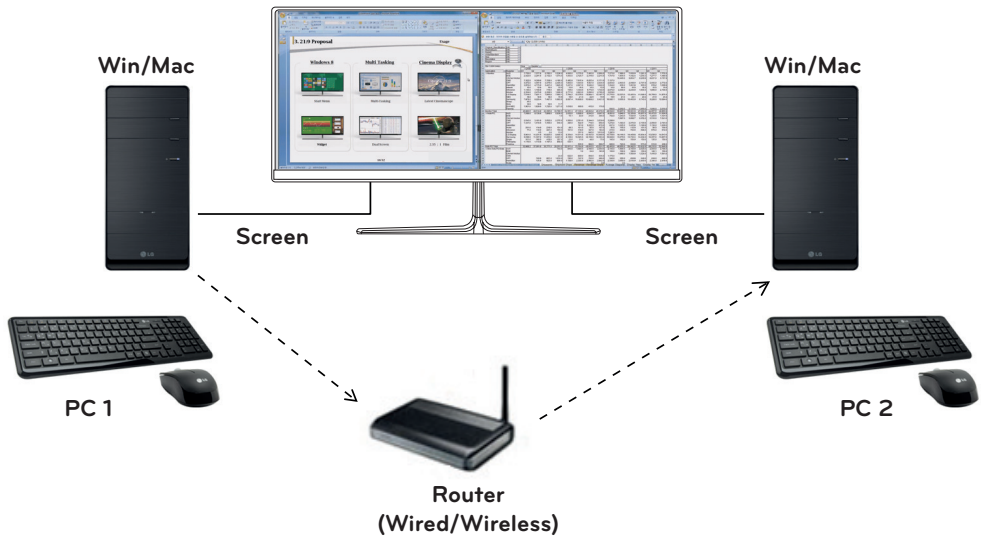
Main screen Sub screen



PBP Connection		Sub screen (Right)			
		HDMI 1	HDMI 2	DisplayPort	Thunderbolt (⚡) (29UC97 model only)
Main screen (Left)	HDMI 1	-	○	○	○
	HDMI 2	○	-	○	○
	DisplayPort	○	○	-	X
	Thunderbolt (⚡) (29UC97 model only)	○	○	X	-

- For details on using the software, refer to the product user manual.
- The product user manual is included on the CD provided and is available for download from the LG Electronics website.

Dual Controller (Keyboard/Mouse Sharing Software)



- **Installation priority (required/optional)** Optional
- **Usage** Sharing a mouse and a keyboard between PCs connected to the same network; transferring files (providing compatibility between Windows and Mac OS)

How to Install

- Installing with the CD provided.
Insert the manual CD provided in the product box into the PC's CD drive and install the Dual Controller.
- Downloading from the LG Electronics website.
Visit the LG Electronics website (www.lg.com) and download the latest software for your model.

How to Run

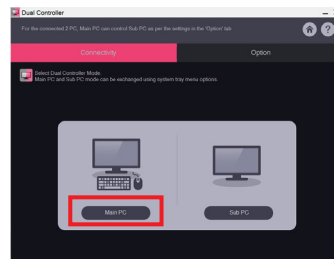
1. Connect your PC to a network.
2. Connect an LG monitor that supports Dual Controller to the PC.
3. Run Dual Controller.

- 1 Double-click the shortcut icon on the desktop.
- 2 Click the tray icon on the bottom right of the PC screen and then click **Open Dual Controller**.

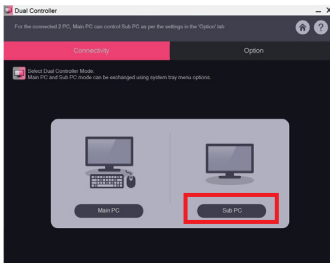


How to Use

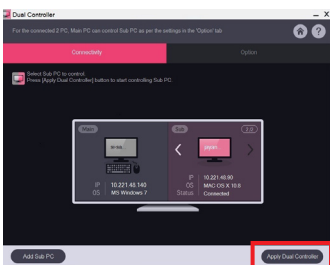
1. Check your network connection.
Make sure that the PCs you want to control through keyboard/mouse sharing are connected to the same LAN via a router.
 - ✗ An LG monitor that supports Dual Controller must be connected to the PC that will be run in Main PC mode.
 - ✗ Only one user on a network can use Dual Controller. Dual Controller can also be used in office environments. However, it is recommended to have only one user.
 - ✗ Dual Controller may not work properly when playing games.
2. Run Dual Controller on the PC running in **Main PC** mode.
: Click the **Main PC** button on the PC whose keyboard and mouse will be shared.



- Run Dual Controller on a Sub PC in **Sub PC** mode.
Click the **Sub PC** button on the PC you want to control.



- Click the **Apply Dual Controller** button on the Main PC.
The Sub PC is automatically searched for on the Main PC mode screen. Click the **Apply Dual Controller** button on the Main PC mode screen.



- When you move the mouse cursor from the screen of the Main PC to the screen of the Sub PC, you can use the Main PC's keyboard and mouse on the Sub PC.
- ✗ You can set the positions of the Main PC and the Sub PC, to **Left/Right** or **Right/Left**, in **PC Position Control** in Dual Controller's **Option** tab.
 - ✗ We recommend that you set the Sub PC so that its screen is only displayed on a monitor.
 - ✗ If there is an active Internet connection, Dual Controller automatically updates to the latest version when started.
 - ✗ Dual Controller may not be available on certain websites and networks depending on the security policy.

Guides on Using Product Functions (Mac)

System Requirements

Graphic card			Interface		
			Thunderbolt (⚡) (29UC97 model only)	HDMI	DisplayPort
2560 x 1080	AMD	Dual AMD FirePro D300 / D500 / D700	○	○	○

- Mac products may not support the recommended resolution or the some features. For more information, refer to the support information card of Mac which is provided separately. (29UC97 model only)
- You can connect (daisy-chain) up to two additional monitors through the Thunderbolt (⚡) of Mac product.
- In order to set the resolution to 2560 x 1080, you may be required to configure the custom settings from the graphics card control panel or update to the latest graphics card driver.
- The maximum supported resolution is 2560 x 1080 @ 60 Hz.
- 2560 x 1080 resolution may not be supported when connected via HDMI.
- Support settings are subject to change.

Precautions for Changing Resolution

- Failing to set the graphics card to the recommended (optimal) resolution may result in blurred text, a dimmed screen, a truncated display area, or misalignment of the display.
- The configuration procedure may differ depending on your computer and/or operating system. Also, some graphics cards may not support certain resolutions. If this is the case, contact the manufacturer of the computer or graphics card for assistance.
- Some graphics cards may not support 2560 x 1080 resolution. Use a graphics card that supports 2560 x 1080 resolution. Even when you set the resolution to 2560 x 1080 on your PC, the actual PC output may not support the resolution.

Mac

Step 1

1. On the Doc bar, click on the **System Preferences** icon.

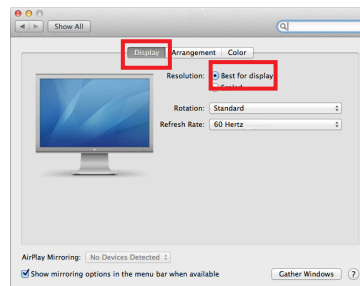


2. When the System Preferences window opens, select **Display**.



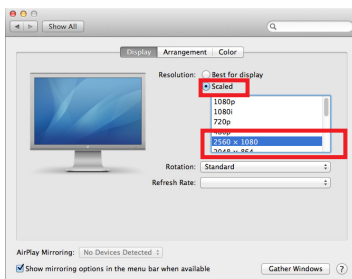
Step 3

4. In the Display tab, select **Best for display**. The display is now set to the recommended resolution (2560 x 1080).



Step 2

3. Select the Scaled option and then select a desired resolution (recommended resolution: 2560 x 1080) and a refresh rate (60 Hz). The settings are now configured.



Available Product and OS

Software	Installation Priority (required/optional)	Supported Interface			Supported OS
		Thunderbolt (⚡) (29UC97 model only)	DisplayPort	HDMI	Mac OS
Screen Split	Optional	○	○	○	10.9 / 10.10
Dual Controller	Optional	○	○	○	10.9 / 10.10

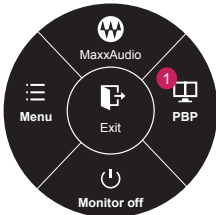
- **Screen Split** Automatically splits the monitor screen into the desired layouts.
- **Dual Controller** Software that makes it possible to use a PC's keyboard and mouse to control other PCs connected to the same network (router).
- The software listed above can be installed using the CD provided with the product or downloaded as the latest version from the LG Electronics website.
- **Graphics card** Use a graphics card that supports 2560 x 1080 resolution.

Dual Link-Up (Monitor PBP Function)

- **Usage** The monitor displays screens for 2 input sources simultaneously.
- The Dual Link-Up feature requires that one of the two input sources is connected via HDMI.
- Image shown may differ from the product that you are using.

How to Run

1. Connect the monitor to two input sources.
2. Press the joystick button on the bottom of the monitor.
3. Enter **1** PBP.



4. Adjust the settings according to the input sources connected.
5. DUAL LINK-UP is applied.

Main screen Sub screen



PBP Connection		Sub screen (Right)			
		HDMI 1	HDMI 2	DisplayPort	Thunderbolt (⚡) (29UC97 model only)
Main screen (Left)	HDMI 1	-	○	○	○
	HDMI 2	○	-	○	○
	DisplayPort	○	○	-	X
	Thunderbolt (⚡) (29UC97 model only)	○	○	X	-

- For details on using the software, refer to the product user manual.
- The product user manual is included on the CD provided and is available for download from the LG Electronics website.

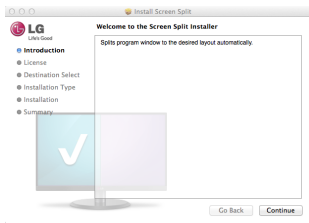
Screen Split (Monitor Screen Split Software)

- **Installation priority (required/optional)** Optional
- **Usage** Automatically splits the monitor screen into desired layouts (2 sections, 3 sections, or 4 sections).

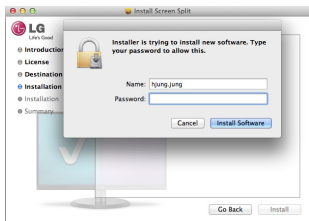
How to Install

- Installing with the CD provided.
Insert the manual CD provided in the product box into the PC's CD drive and install the Screen Split.
- Downloading from the LG Electronics website.
Visit the LG Electronics website (www.lg.com) and download the latest software for your model.

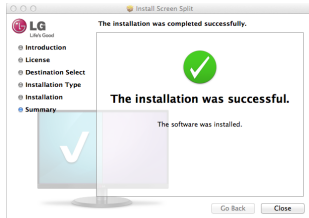
1. When the installation program starts, click on **Continue**.
During the installation, you have to accept the license agreement.



2. Enter the Admin User password and click on **Install Software**.



3. Click on **Close** to finish the installation.



How to Run

- Finder → Applications → Run Screen Split



- Click on the Screen Split icon on the menu bar.



- Search for **Screen Split** in Spotlight search.



How to Use

- For details on using the software, refer to the program's Help.

1. Click on the tray icon at the bottom right of the PC screen.



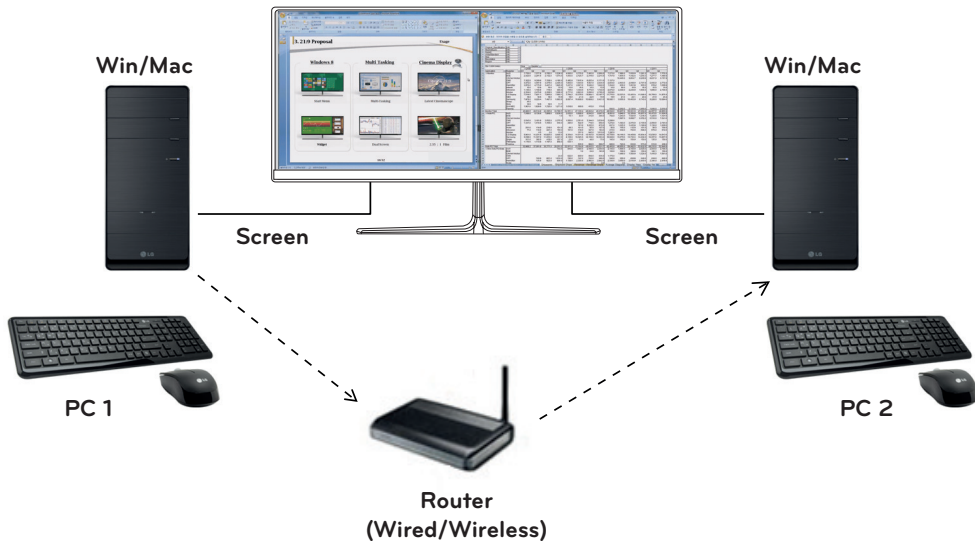
2. Select a screen layout.



3. The screen split layout is applied.



Dual Controller (Keyboard/Mouse Sharing Software)

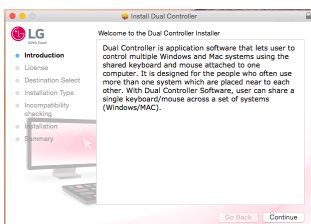


- **Installation priority (required/optional)** Optional
- **Usage** Sharing a mouse and a keyboard between PCs connected to the same network; transferring files (providing compatibility between Windows and Mac OS)

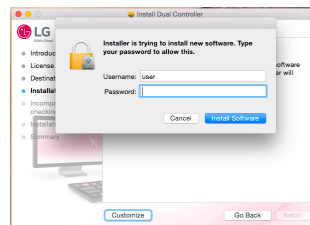
How to Install

- Installing with the CD provided.
Insert the manual CD provided in the product box into the PC's CD drive and install the Dual Controller.
- Downloading from the LG Electronics website.
Visit the LG Electronics website (www.lg.com) and download the latest software for your model.

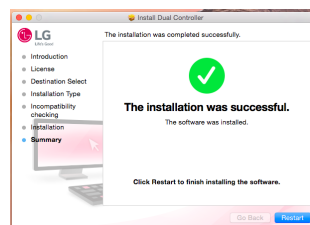
1. When the installation program starts, click on **Continue**. During the installation, you have to accept the license agreement.



2. Enter the Admin User password and click on **Install Software**.



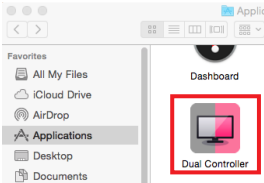
3. Click on **Restart** to finish the installation.



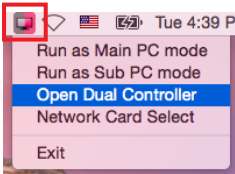
How to Run

1. Connect your PC to a network.
2. Connect an LG monitor that supports Dual Controller to the PC.
3. Run Dual Controller.

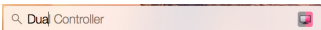
- Finder → Applications → Run Dual Controller



- Click the Dual Controller icon on the menu bar and then click **Open Dual Controller**.



- Search for **Dual Controller** in Spotlight.



How to Use

- Instructions for running Dual Controller for Mac are the same as Dual Controller for Windows. See the instructions for Dual Controller for Windows.
- ✗ The PC whose keyboard and mouse will be shared must be run in **Main PC** mode.
- ✗ An LG monitor that supports Dual Controller must be connected to the PC that will be run in **Main PC** mode.
- ✗ The PC that you want to control with Dual Controller must be run in **Sub PC** mode.
- ✗ Only one user on a network can use Dual Controller.
- ✗ Dual Controller may not work properly when playing games.
- ✗ We recommend that you set the Sub PC so that its screen is only displayed on a monitor.
- ✗ If there is an active Internet connection, Dual Controller automatically updates to the latest version when started.
- ✗ Dual Controller may not be available on certain websites and networks depending on the security policy.

