

Software Upgrade Instruction

USB Update

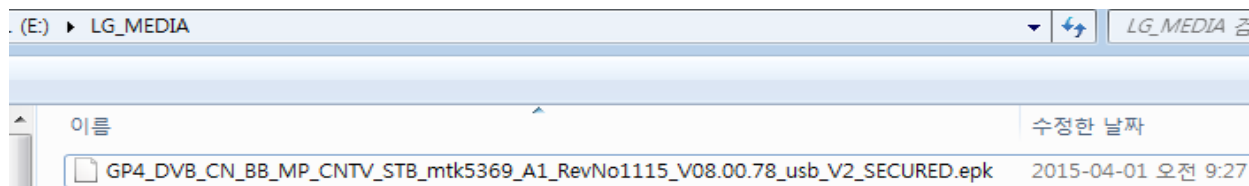
GP4_DVB_CN_BB_MP_CNTV_STB_mtk5369_A1_RevNo1115_V08.00.78_usb_V2_SECURED.epk is an update file for Main Software.

1. Copy USB update image to LG_MEDIA folder in USB stick

- Launch area and f/w country must match.

(1) EU/Nordic : GP4_DVB_EU~.epk (2)AJ/JA/IL : GP4_DVB_AJ~.epk

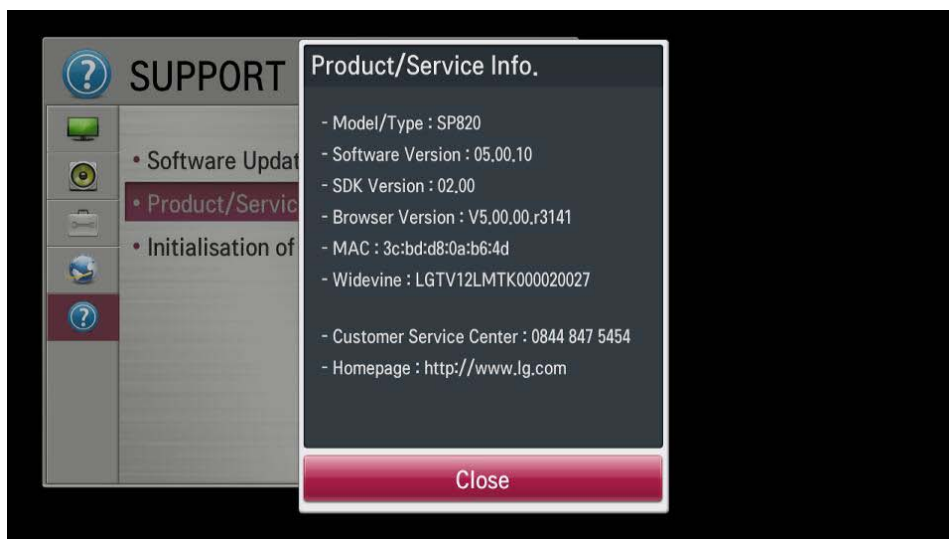
(3) KOR/CAN : GP4_ATSC~.epk **(4) CN : GP4_DVB_CN~.epk**



2. Insert USB stick

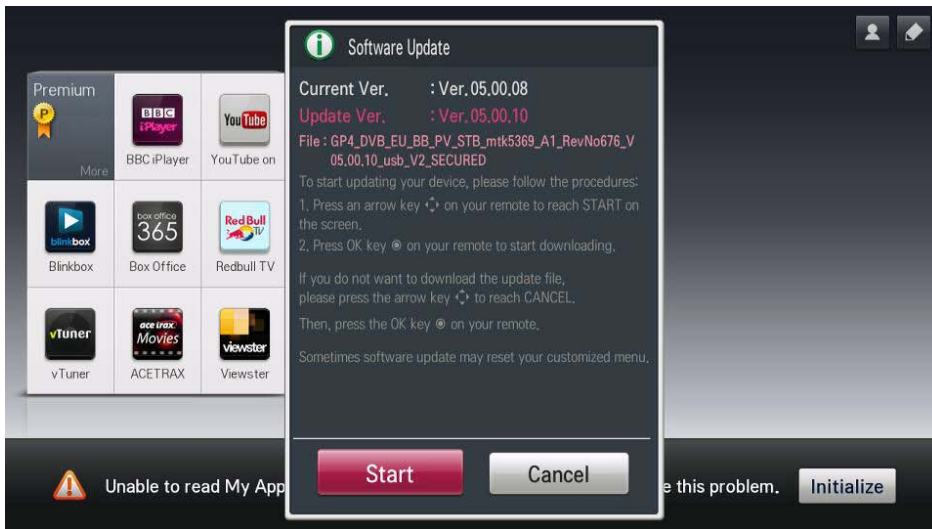
- If the f/w version in USB is lower or same as Set's, you can't update f/w.

- How to check current version : setup > support > product/service info > software version

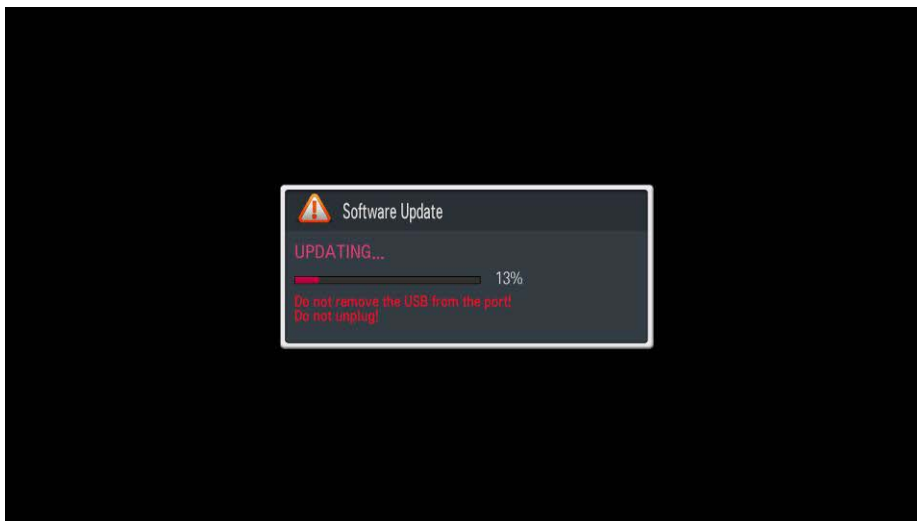


Software Upgrade Instruction

3. Select start button to update.



4. Do not unplug power cable and USB stick while updating.



5. After updating, SP820 set reboots.