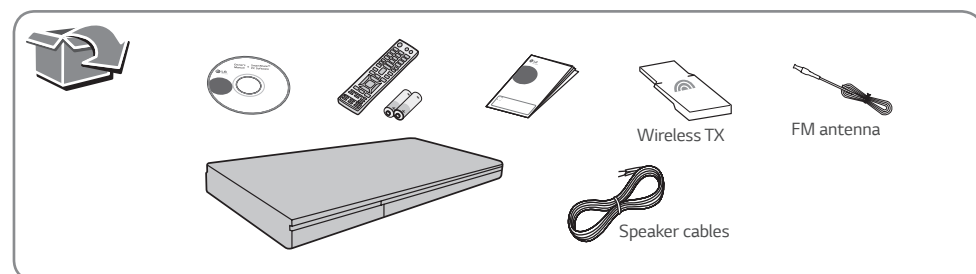


**3D Blu-ray™ /
DVD Home
Cinema System**
BH7240BW/
BH7540TW

ENGLISH | SIMPLE MANUAL

An extended Owner's Manual that contains information on the advanced features is located on the CD-ROM provided in an electronic version. To read these files, you will need to use a Personal Computer (PC) equipped with a CD-ROM drive. Some of the content in this manual may differ from your unit.



www.lg.com

DEUTSCH | KURZANLEITUNG

Eine ausführliche Bedienungsanleitung mit Hinweisen zu erweiterten Funktionen befindet sich als elektronisches Dokument auf der enthaltenen CD-ROM. Zur Anzeige dieser Dateien wird ein Personal Computer (PC) mit CD-ROM-Laufwerk benötigt. Bestimmte Inhalte in dieser Bedienungsanleitung unterscheiden sich unter Umständen von Ihrem Gerät.

FRANÇAIS | MANUEL Simplifié

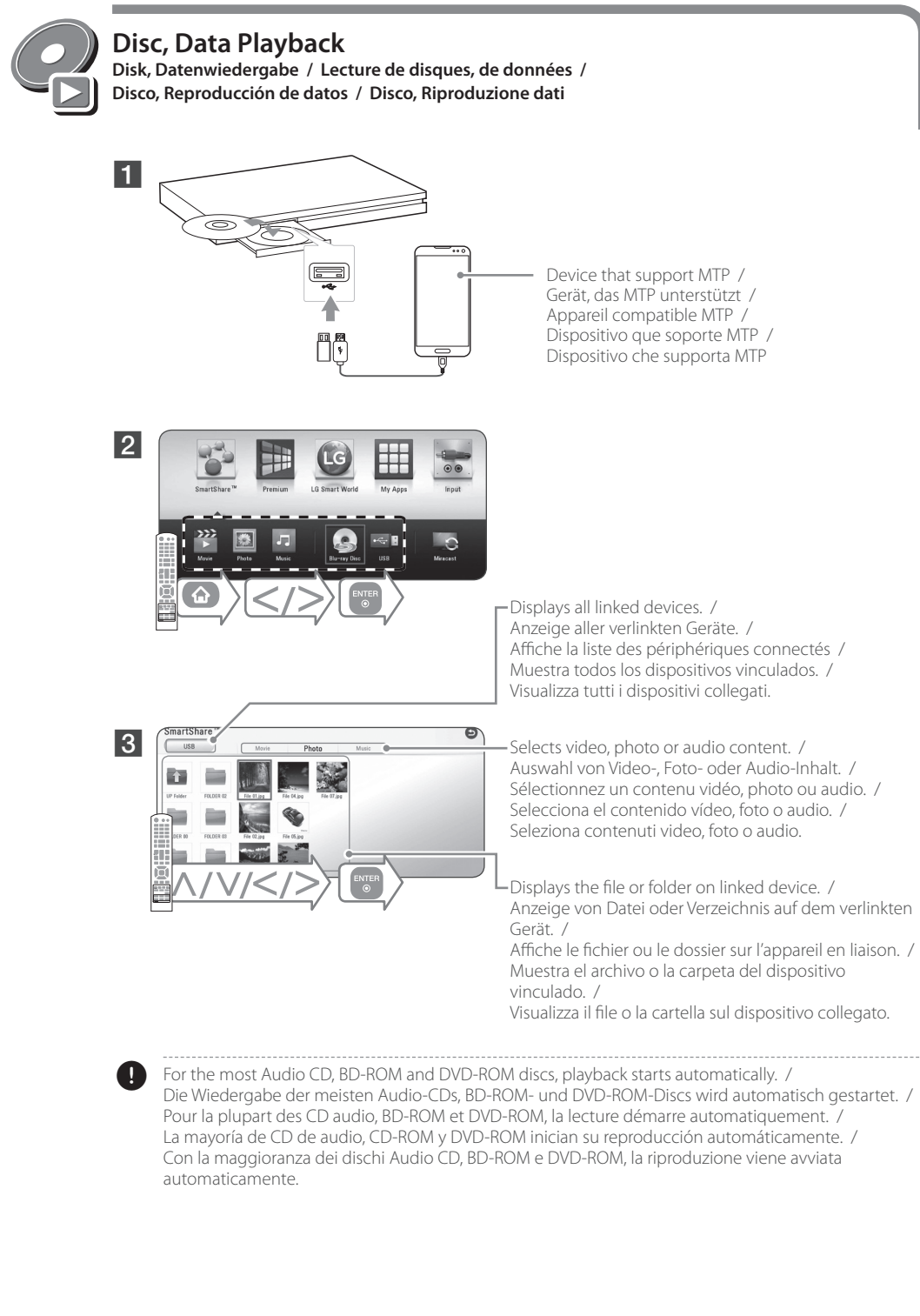
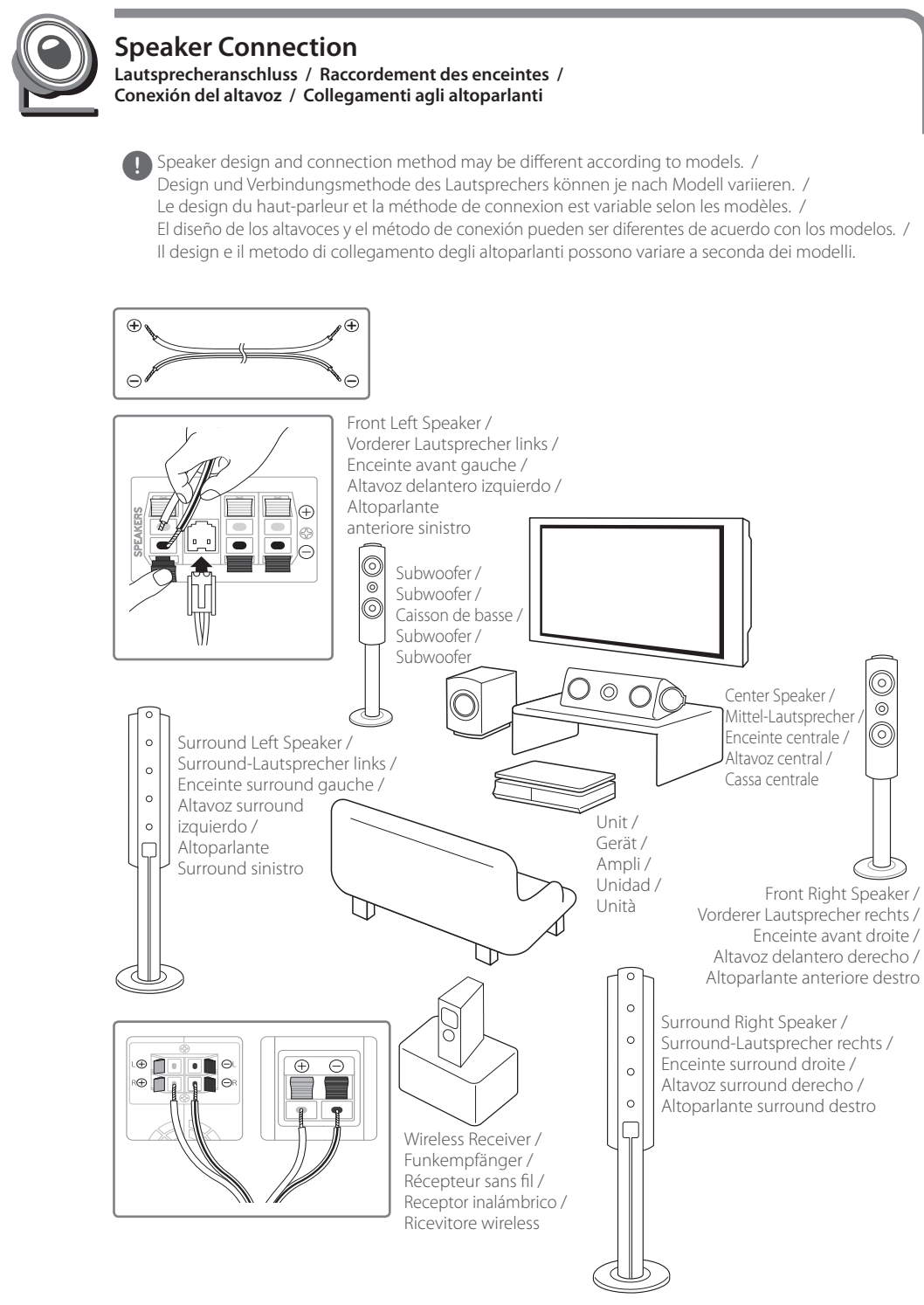
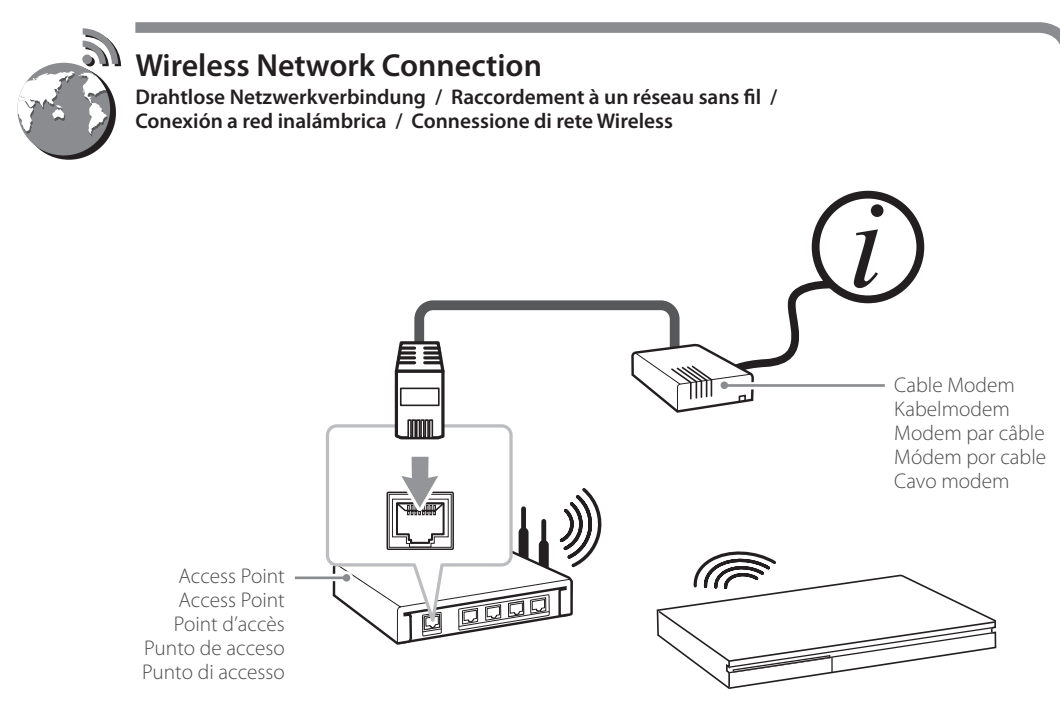
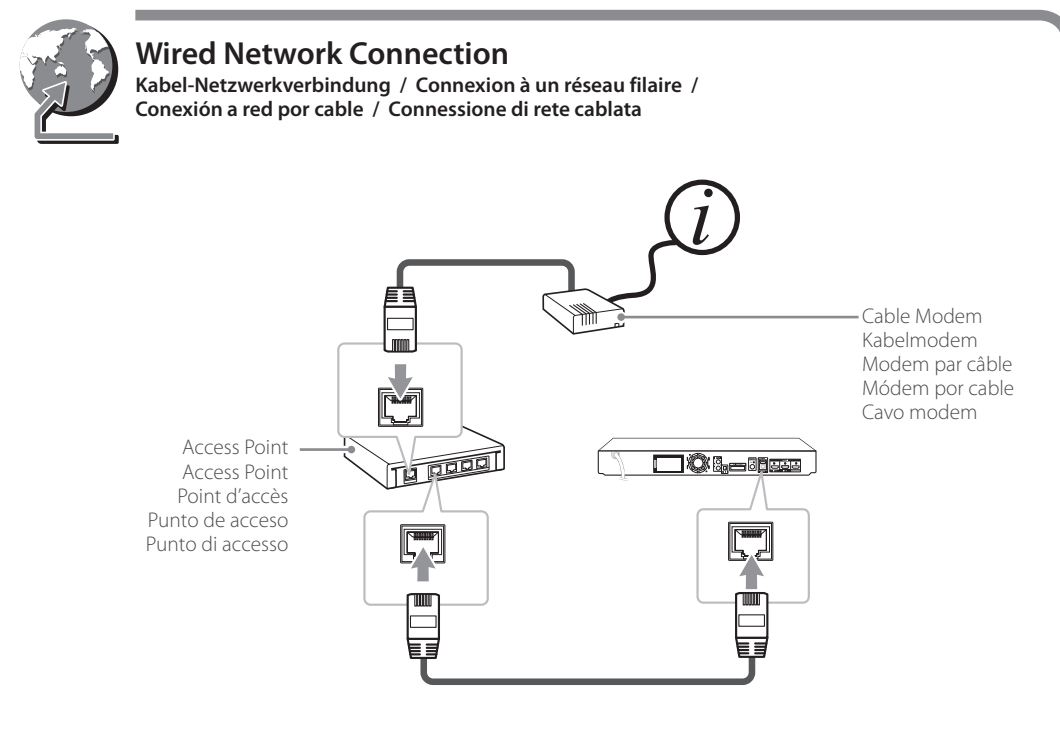
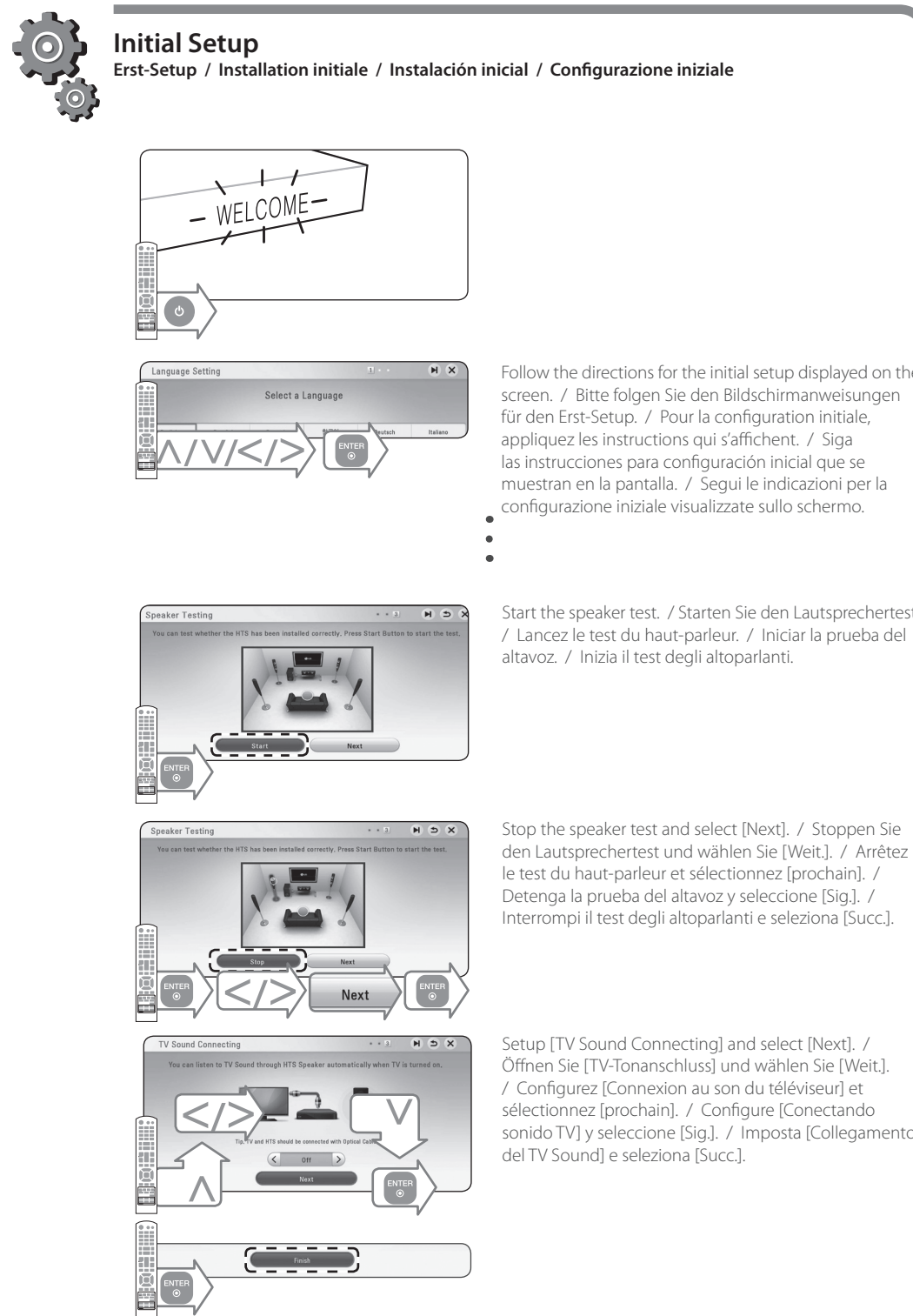
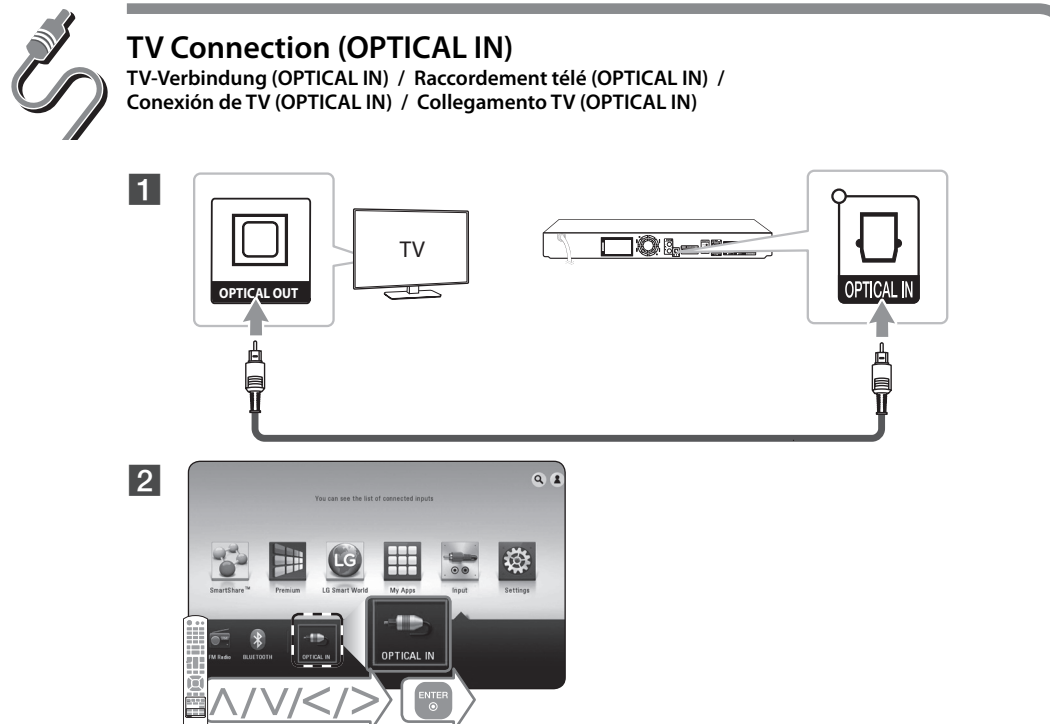
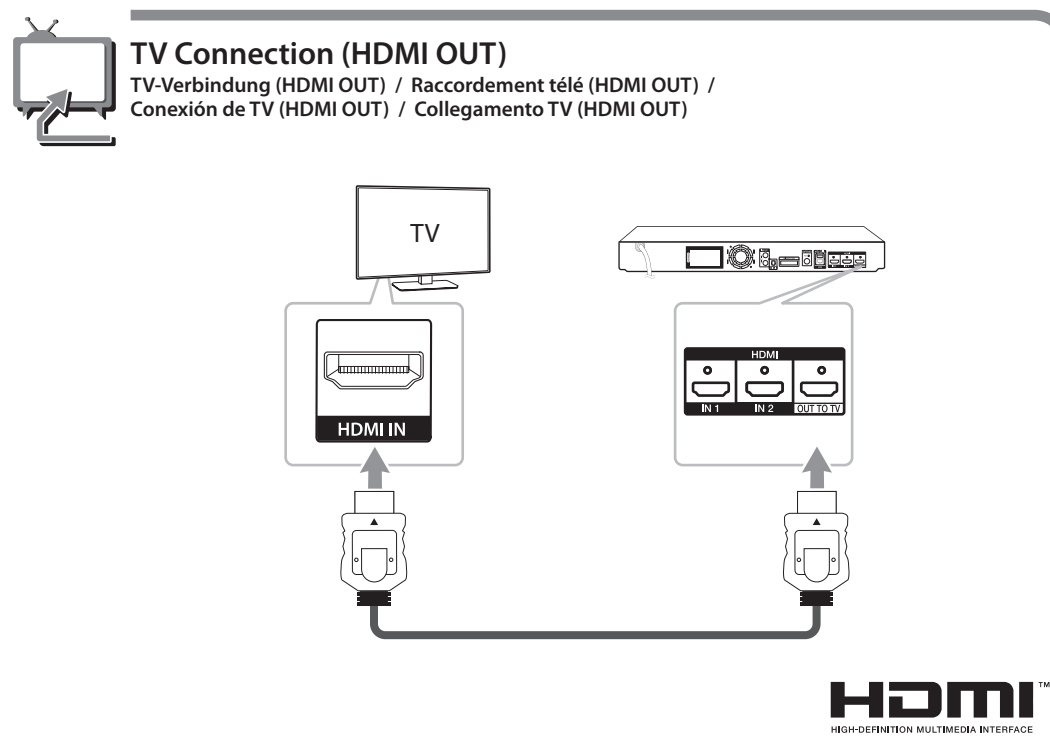
Un Manuel d'Utilisation étendu en version électronique qui contient des informations sur les fonctionnalités avancées est situé sur le CD-ROM fourni. Pour lire ces fichiers, vous aurez besoin d'utiliser un Ordinateur Personnel (PC) avec un lecteur de CD-ROM. Il est possible qu'une partie du contenu de ce manuel diffère de votre lecteur.

ESPAÑOL | MANUAL SIMPLE

En el CD-ROM se incluye una versión electrónica extendida del Manual del Usuario ampliado con funciones avanzadas. Para poder leerlo debe abrir dichos archivos desde un ordenador personal (PC) equipado con una unidad de CD-ROM. Cierta contenido en este manual puede ser diferente del de su unidad.

ITALIANO | MANUALE SEMPLIFICATO

Un ampio manuale dell'utente che contiene le informazioni sulle caratteristiche avanzate è registrato nel CD-ROM fornito nella versione elettronica. Per leggere questi file, dovete usare un personal computer (PC) fornito di drive per CD-ROM. Alcuni dei contenuti di questo manuale possono essere diversi da quelli del tuo lettore.





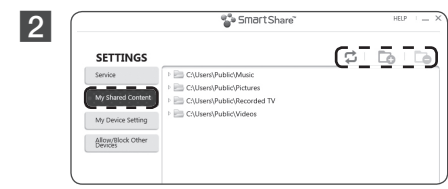
Network Playback

Netzwerk wiedergabe / Lecteur réseau / Reproducción en red / Riproduzione rete

SmartShare PC software Installation

Installation der SmartShare PC Software / Installation de SmartShare PC / Instalación del software SmartShare PC / Installazione del software SmartShare PC

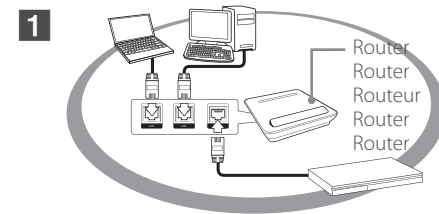
- 1 Install SmartShare PC software. / Installieren Sie die SmartShare PC Software. / Installez SmartShare PC. / Instalar software de PC SmartShare. / Installa il software SmartShare PC.



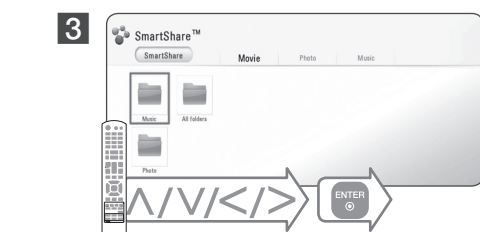
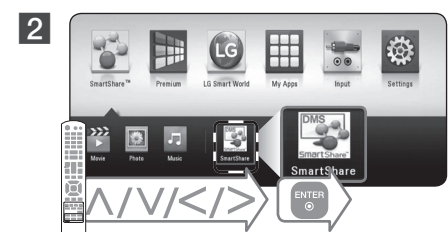
2 Run the program, and set the share folder you want. / Starten Sie das Programm und legen Sie einen gewünschten Freigebeordner fest. / Exécutez le programme et définissez le dossier partagé de votre choix. / Ejecute el programa y seleccione la carpeta que quiera compartir. / Avvia il programma e imposta la cartella di condivisione che desidera.

SmartShare Network Playback

Wiedergabe über Smart Share-Netzwerk / Lecture réseau par SmartShare / Reproducción Red Smart Share / Riproduzione di SmartShare Network



1 Check the network connection and settings. / Überprüfen Sie die Netzwerkverbindung und -einstellungen. / Vérifiez la connexion et les paramètres réseau. / Compruebe la conexión y configuraciones de red. / Controlla il collegamento di rete e le impostazioni.



Additional Information

Weitere Informationen / Informations supplémentaires / Información adicional / Informazioni aggiuntive

Customer Support

You can update the Player using the latest software to enhance the products operation and/or add new features. To obtain the latest software for this player (if updates have been made), proceed the software updates as written or visit <http://www.lg.com> or contact LG Electronics customer care center.

Kundendienst

Die Software des Players kann auf die neueste Version aktualisiert werden, um den Funktionsumfang zu erweitern und/oder neue Funktionen hinzuzufügen. Um die neueste Software-Version für diesen Player zu erhalten (falls Updates durchgeführt wurden), führen Sie wie oben beschrieben ein Software-Update durch, gehen Sie auf <http://www.lg.com> oder kontaktieren Sie das Kundendienst-Center von LG Electronics.

Support client

Vous pouvez mettre à jour le lecteur avec les derniers logiciels afin d'améliorer son fonctionnement et/ou afin d'ajouter de nouvelles fonctionnalités. Pour obtenir le logiciel le plus récent de ce lecteur (si des mises à jour sont disponibles), procédez comme indiqué ci-dessus ou allez sur <http://www.lg.com>. Vous pouvez également contacter le service clientèle de LG Electronics.

Asistencia al cliente

Es posible actualizar el reproductor con el software más reciente para mejorar el funcionamiento de los productos y/o agregar nuevas funciones. Para conseguir el software más reciente para este reproductor (en caso de que se hayan hecho actualizaciones), realice las actualizaciones de software como se muestra anteriormente, entre en <http://www.lg.com> o póngase en contacto con el centro de atención al cliente de LG Electronics.

Assistenza clienti

Puoi aggiornare il lettore usando il software più recente per migliorare il funzionamento del prodotto e/o aggiungere nuove funzionalità. Per ottenere il software più recente per il player (se sono stati fatti gli aggiornamenti), effettua gli aggiornamenti software come sopra o visita www.lg.com o contatta il centro assistenza clienti di LG Electronics.

Open source software notice

To obtain the corresponding source code under GPL, LGPL and other open source licenses, please visit <http://opensource.lge.com>. All referred license terms, warranty disclaimers and copyright notices are available to download with the source code.

Hinweise zu Open Source-Software

Eine Kopie der GPL-, LGPL- und anderer Open Source-Genehmigungen finden Sie unter <http://opensource.lge.com>. Sämtliche angegebene Lizenzbedingungen, Haftungsangabungen und Hinweise zum Urheberrecht stehen als Quellcode zum Download bereit.

Avis concernant les logiciels open source

Pour connaître le code source correspondant de GPL, LGPL et d'autres licences open source, rendez-vous sur <http://opensource.lge.com>. Les conditions de licence, les droits de responsabilité et les avis concernant les droits d'auteur sont disponibles en téléchargement avec le code source.

Aviso sobre el software de código abierto

Para obtener el correspondiente código bajo la licencia de GPL, LGPL y otras licencias de código abierto, visite <http://opensource.lge.com>. Todos los terminos referidos, la exclusion de garantía y los avisos de copyright pueden descargarse con código abierto.

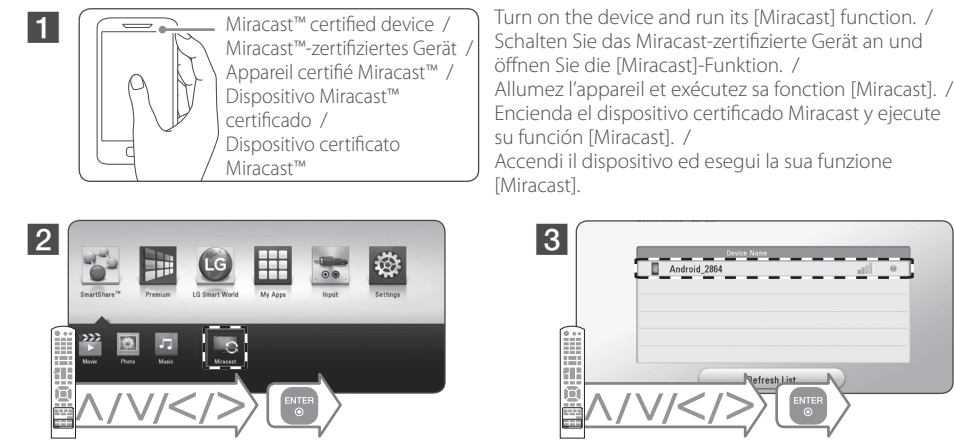
Nota di software di libera circolazione

Per ottenere il corrispondente codice di software di libera circolazione in base alle licenze GPL, LGPL e altre, visitate il sito <http://opensource.lge.com>. Tutti i termini relativi a licenza, rivendicazioni di garanzia e note di copyright sono disponibili per lo scaricamento con il codice di sorgente.



Enjoying Miracast

Genießen Sie Miracast / Utilisation de Miracast / Disfrute de Miracast / Goditi Miracast

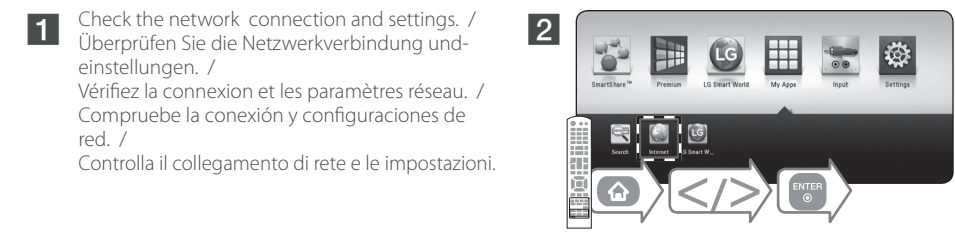


- 1 Depending on your wireless network condition, mirroring may be unstable. / Abhängig von Ihrer Wireless-Voraussetzung kann die Spiegelung instabil sein. / Selon l'état de votre réseau sans fil, le mirroring est susceptible d'être instable. / Dependiendo del estado de su red inalámbrica, la réplica puede resultar inestable. / A seconda della condizione della tua rete wireless, il mirroring potrebbe non essere stabile.



Enjoying Web browsing

Genießen Sie das Browsen im Internet / Utilisation de la navigation Web / Disfrute de la navegación por la Web / Goditi la navigazione sul web



- 1 Check the network connection and settings. / Überprüfen Sie die Netzwerkverbindung und -einstellungen. / Vérifiez la connexion et les paramètres réseau. / Compruebe la conexión y configuraciones de red. / Controlla il collegamento di rete e le impostazioni.
- 2 We recommend a minimum connection speed of 4 Mbps and playable file formats on web browsing are "jpeg", "png", "gif", "wmv", "asf", "wma", "mp3", "mp4". / Wir empfehlen ein Mindestverbindungsgeschwindigkeit von 4 Mbps, spielbare Dateiformate über das Web-Browsing sind "jpeg", "png", "gif", "wmv", "asf", "wma", "mp3" und "mp4". / Nous recommandons un débit de connexion de 4 Mbits/s au minimum et les formats de fichiers lisibles en navigation Web sont : "jpeg", "png", "gif", "wmv", "asf", "wma", "mp3", "mp4". / Recomendamos una velocidad mínima de la conexión de 4 Mbps y los formatos de archivo ejecutables son "jpeg", "png", "gif", "wmv", "asf", "wma", "mp3", "mp4". / Si consiglia una velocità di connessione minima di 4 Mbp. I formati di file riproducibili sulla navigazione web sono "jpeg", "png", "gif", "wmv", "asf", "wma", "mp3", "mp4".



Specification

Technische Daten / Spécifications / Especificaciones / Specifiche

ENGLISH

Power requirements	Refer to main label on the rear panel.
Power consumption	Refer to main label on the rear panel.
Dimensions (W x H x D)	Approx. 440 mm x 65 mm X 298 mm
Net Weight (Approx.)	3.2 kg
Bus Power Supply (USB)	DC 5 V $\overline{\text{---}}$ 500 mA (Front) / DC 5 V $\overline{\text{---}}$ 300 mA (Rear)

Design and specifications are subject to change without notice.

DEUTSCH

Stromversorgung	Siehe Etikett auf der Geräterückseite.
Leistungsaufnahme	Siehe Etikett auf der Geräterückseite.
Abmessungen (B x H x T)	Ca. 440 mm x 65 mm X 298 mm
Gesamtgewicht (ca.)	3,2 Kg
Stromversorgung über Bus (USB)	DC 5 V $\overline{\text{---}}$ 500 mA (Vorne) / DC 5 V $\overline{\text{---}}$ 300 mA (Hinten)

Änderungen der Ausführung und der technischen Daten ohne vorherige Ankündigung vorbehalten.

FRANÇAIS

Alimentation	Reportez-vous à l'étiquette principale au dos de l'appareil.
Consommation électrique	Reportez-vous à l'étiquette principale au dos de l'appareil.
Dimensions (L x H x P)	Approximativement 440 mm x 65 mm X 298 mm
Poids net (approx.)	3,2 kg
Bus Power Supply (USB)	DC 5 V $\overline{\text{---}}$ 500 mA (Avant) / DC 5 V $\overline{\text{---}}$ 300 mA (Arrière)

La conception et les spécifications sont sujettes à modification sans préavis.

ESPAÑOL

Requisitos de alimentación	Consulte la etiqueta principal en el panel trasero
Consumo de energía	Consulte la etiqueta principal en el panel trasero
Dimensiones (A x Alt x F)	Aprox. 440 mm x 65 mm X 298 mm
Peso neto (aprox.)	3,2 kg
Alimentación bus (USB)	DC 5 V $\overline{\text{---}}$ 500 mA (Frente) / DC 5 V $\overline{\text{---}}$ 300 mA (Trasero)

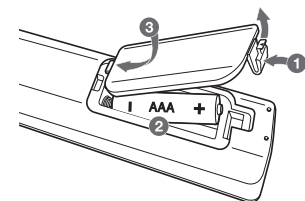
El diseño y las especificaciones están sujetas a cambio sin previo aviso.

ITALIANO

Requisiti di alimentazione	Vedere etichetta principale sul pannello posteriore.
Assorbimento energetico	Vedere etichetta principale sul pannello posteriore.
DIMENSIONI (L x A x P)	Approx. 440 mm x 65 mm X 298 mm
Peso netto (approssimativo)	3,2 kg
Alimentazione tensione bus (USB)	DC 5 V $\overline{\text{---}}$ 500 mA (Parte anteriore) / DC 5 V $\overline{\text{---}}$ 300 mA (Parte posteriore)

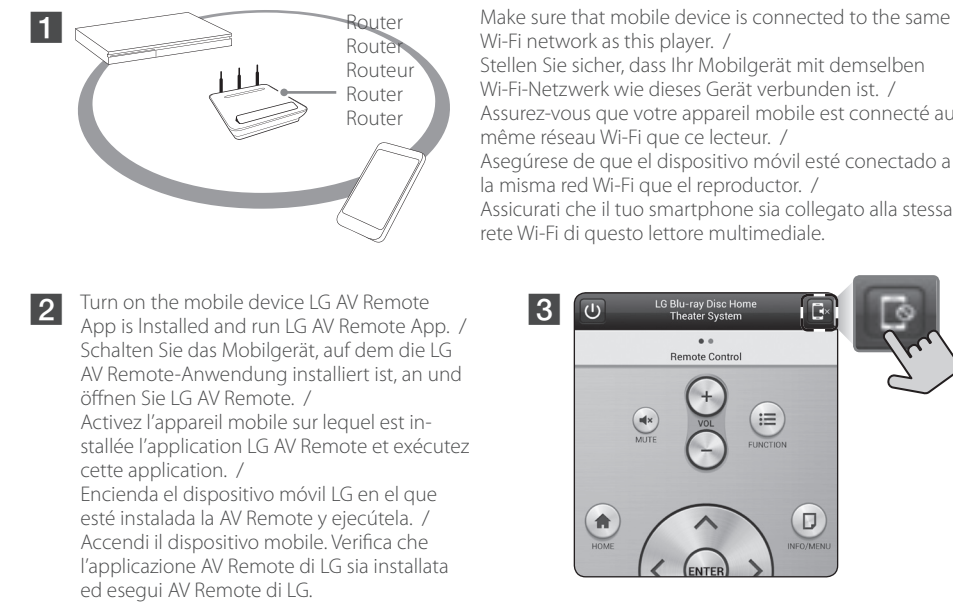
Il design e le specifiche tecniche sono soggette a cambiamento senza preavviso.

Replacement of battery / Austausch der Batterie / Remplacement de la pile / Sustitución de la pila / Sostituzione della batteria



Enjoying Private Sound

Genießen Sie die "Private Sound"-Funktion / Transformez votre Smartphone en casque sans fil / Disfrute del sonido privado / Goditi Audio Privato

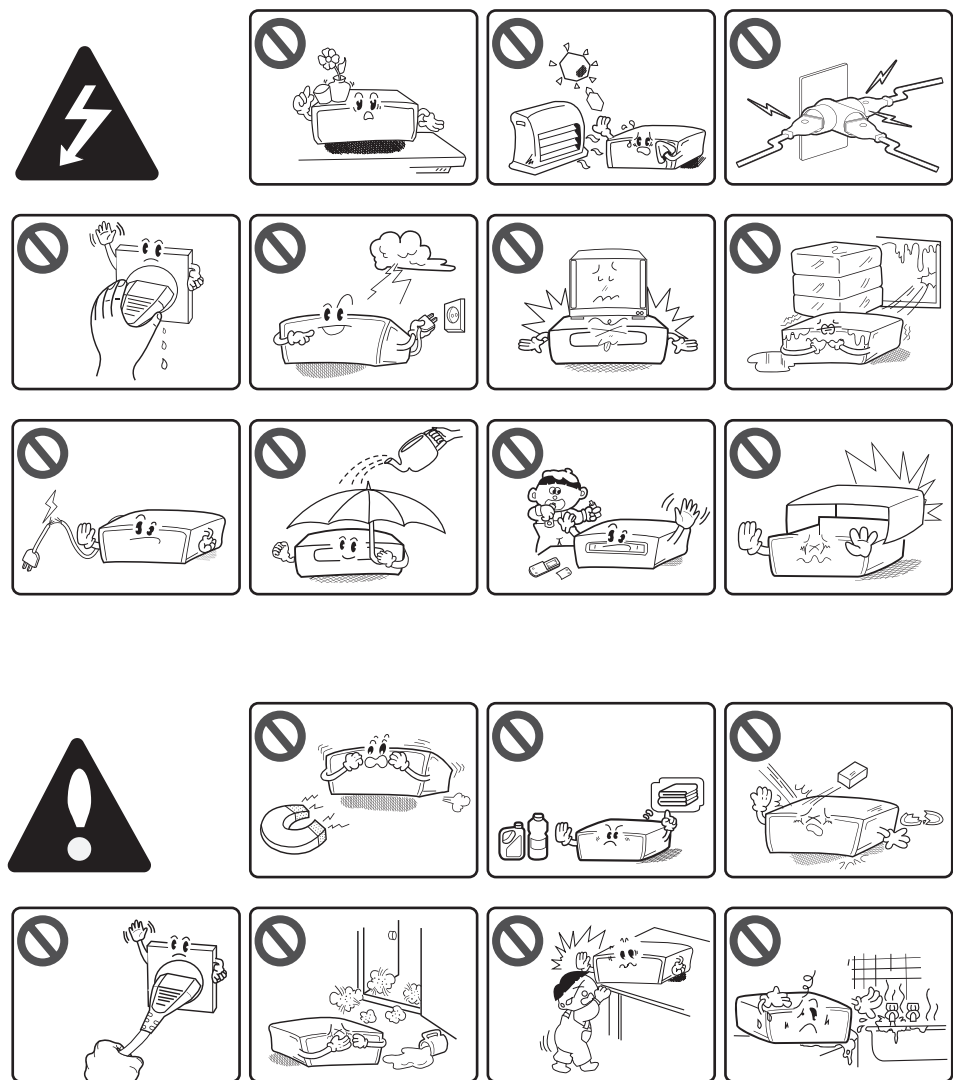


- 1 Not all modes support sound privacy and pairing multiple devices is not available. / Nicht alle Modi unterstützen die "Private Sound"-Funktion und das Verbinden von mehreren Geräten ist nicht verfügbar. / Tous les modes ne supportent pas le son en privé et l'appariage avec plusieurs appareils n'est pas possible. / No todos los modos son compatibles con el sonido privado y la vinculación de varios dispositivos podría no estar disponible. / Non tutte le modalità supportano l'audio privato e l'accoppiamento di più dispositivi non è disponibile.



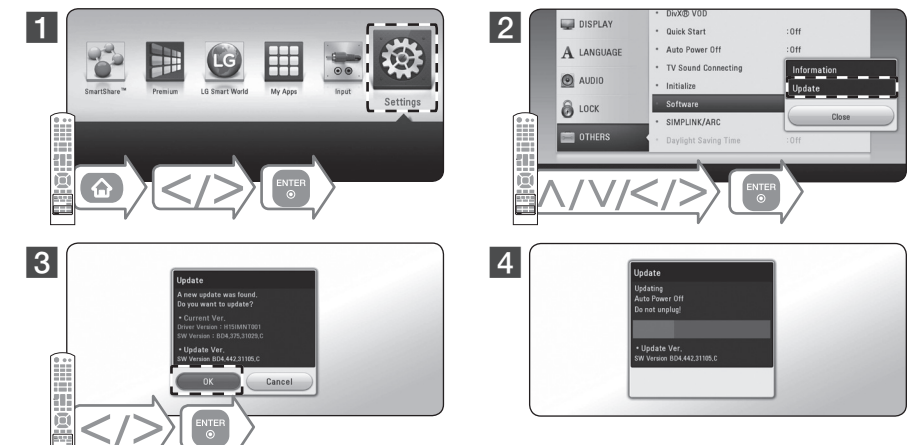
Safety Information

Sicherheitshinweise / Consignes de sécurité / Información de seguridad / Informazioni di sicurezza



Software Update

Software-Update / Mise à jour du logiciel / Actualización del software / Aggiornamento del software



- 1
- 2
- 3
- 4



CAUTION: TO REDUCE THE RISK OF ELECTRIC SHOCK DO NOT REMOVE COVER (OR BACK) NO USER-SERVICEABLE PARTS INSIDE REFER SERVICING TO QUALIFIED SERVICE PERSONNEL.

This lightning flash with arrowhead symbol within an equilateral triangle is intended to alert the user to the presence of uninsulated dangerous voltage within the product's enclosure that may be of sufficient magnitude to constitute a risk of electric shock to persons.

The exclamation point within an equilateral triangle is intended to alert the user to the presence of important operating and maintenance (servicing) instructions in the literature accompanying the product.

WARNING: TO PREVENT FIRE OR ELECTRIC SHOCK HAZARD, DO NOT EXPOSE THIS PRODUCT TO RAIN OR MOISTURE.

WARNING: Do not install this equipment in a confined space such as a book case or similar unit.

CAUTION: Do not block any ventilation openings. Install in accordance with the manufacturer's instructions. Slots and openings in the cabinet are provided for ventilation and to ensure reliable operation of the product and to protect it from over heating. The openings shall never be blocked by placing the product on a bed, sofa, rug or other similar surface. This product shall not be placed in a built-in installation such as a bookcase or rack unless proper ventilation is provided or the manufacturer's instruction has been adhered to.

CAUTION concerning the Power Cord To disconnect power from the mains, pull out the mains cord plug. When installing the product, ensure that the plug is easily accessible.

CAUTION: The apparatus shall not be exposed to water (dripping or splashing) and no objects filled with liquids, such as vases, shall be placed on the apparatus.

This device is equipped with a portable battery or accumulator. Safety way to remove the battery or the battery from the equipment: Remove the old battery or battery pack, follow the steps in reverse order than the assembly. To prevent contamination of the environment and bring on possible threat to human and animal health, the old battery or the battery put in the appropriate container at designated collection points. Do not dispose of batteries or battery together with other waste. It is recommended that you use local, free reimbursement systems batteries and accumulators. The battery shall not be exposed to excessive heat such as sunshine, fire or the like.

Disposal of your old appliance 1. All electrical and electronic products shall be disposed of separately from the municipal waste stream via designated collection facilities appointed by the government or the local authorities.

2. The correct disposal of your old appliance will help prevent potential negative consequences for the environment and human health.

3. For more detailed information about disposal of your old appliance, please contact your city office, waste disposal service or the shop where you purchased the product.

Disposal of waste batteries/accumulators 1. This symbol may be combined with chemical symbols for mercury (Hg), cadmium (Cd) or lead (Pb) if the battery contains more than 0.0005% of mercury, 0.002% of cadmium or 0.004% of lead.

2. All batteries/accumulators should be disposed separately from the municipal waste stream via designated collection facilities appointed by the government or the local authorities.

3. The correct disposal of Your old batteries/ accumulators will help to prevent potential negative consequences for the environment, animal and human health.

4. For more detailed information about disposal of Your old batteries/ accumulators, please contact Your city office, waste disposal service or the shop where You purchased the product.

For Wireless product European Union Notice CE 01970 LG Electronics hereby declares that this product is in compliance with the essential requirements and other relevant provisions of Directive 1999/5/EC, 2004/108/EC, 2006/95/EC, 2009/125/EC and 2011/65/EU.

Please contact to the following address for obtaining a copy of the DoC (Declaration of Conformity).

Contact office for compliance of this product: LG Electronics Inc. EU Representative, Krijgsman 1, 1186 DM Amstelveen, The Netherlands

Please note that this is NOT a Customer Service contact point. For Customer Service Information, see Warranty Card or contact the dealer that you purchased this product.

Indoor use only. RF Radiation Exposure Statement This equipment should be installed and operated with minimum distance 20 cm between the radiator and your body.