

Cinema 3D Sound Blu-ray™ Home Cinema System

BH9230BW
BH9430PW
BH9530TW

SVENSKA | ANVÄNDARHANDBOK

En mera omfattande användarhandbok med information om hur du använder de mera avancerade funktionerna återfinns på CD-ROM skivan i en elektronisk form. För att läsa denna information behöver du en PC utrustad med en CD-ROM läsare.

DANSK | BRUGERVEJLEDNING

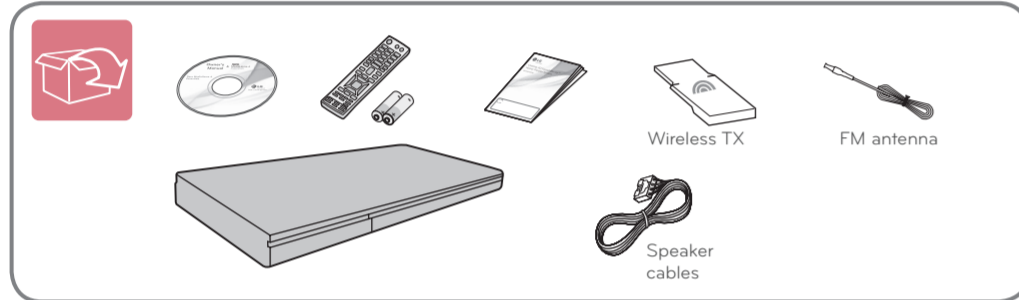
Der findes en udvidet brugervejledning i elektronisk udgave med oplysninger om avancerede funktioner på CD-ROM'en. Hvis du vil læse disse filer, skal du bruge en PC med et CD-ROM drev.

NORSK | BRUKERMANUAL

En utvidet brukermanual som inneholder informasjon om de avanserte muligheter er lokalisert på CD-ROM levert i en elektronisk versjon. For å lese disse filer, vil du trenge en Personal Computer (PC) utstyrt med en CD-ROM driver.

SUOMI | KÄYTTÖOHJE

Lisäominaisuuksilla varustettu laajennettu käyttöohje sijaitsee mukana toimitetulla CD-ROM-levyllä sähköisessä muodossa. Näiden tiedostojen lukemiseksi sinun tietokoneesi (PC) täytyy olla varustettu CD-ROM-aseamalla.



Högtalaranslutning / Højttalertilslutning / Høytaler tilkobling / Kaiuttimen liittäntä

**Trådlös mottagare
Trådlös mottager
Trådlös mottaker
Langaton vastaanotin**

**Bakre högtalare
Bagerste højttaler
Bakhøytaler
Takakaiutin**

BH9230BW : S93B1-S
BH9430PW : S93B1-S
BH9530TW : S93T1-S

TV-anslutning (HDMI UT) / TV-tilslutning (HDMI UD) / TV-tilkobling (HDMI UT) / TV:n kytkeminen (HDMI OUT)

TV-anslutning (OPTICAL IN) / TV-tilslutning (OPTICAL IN) / TV-tilkobling (OPTICAL IN) / TV:n kytkeminen (OPTICAL IN)

Nätverk med kabelanslutning / Ledningstrukket netværkforbindelse / Kabeltilkoblet netværksforbindelse / Lankaverkon kytkeminen

Trådlös nätverksanslutning / Trådløs netværksforbindelse / Trådløs netværksforbindelse / Langattoman verkon kytkeminen

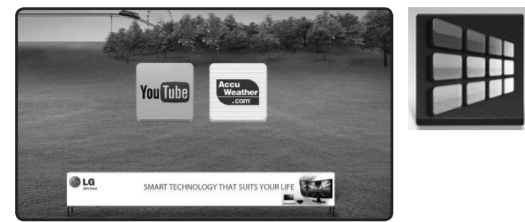
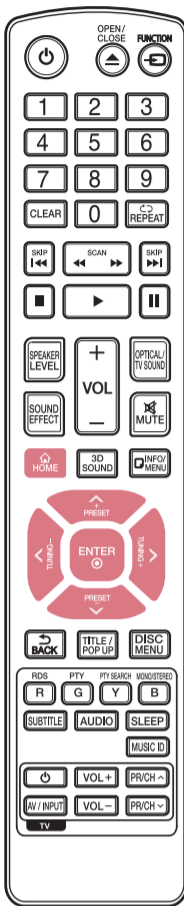
Säkerhetsinformation / Sikkerhedsoplysninger / Sikkerhets Informasjon / Turvallisuustiedot

Anslutning för trådlösa högtalare / Trådløs højttalerforbindelse / Manuell trådløs højttalertilkobling / Langaton kaiutinyhteys

- Wireless TX
- Wireless TX
- Trådlös mottagare
Trådlös mottager
Trådlös mottaker
Langaton vastaanotin
- WELCOME
- Trådlös mottagare
Trådlös mottager
Trådlös mottaker
Langaton vastaanotin
- STAND BY / ON
Gul Gul
Keltainen

Startinställningar / Grundindstilling / Opprinnelig oppsett / Ensimmäinen asennus

Använda START-meny / Brug af HOME menu / Bruk HOME-meny / KOTI-valikon käyttäminen



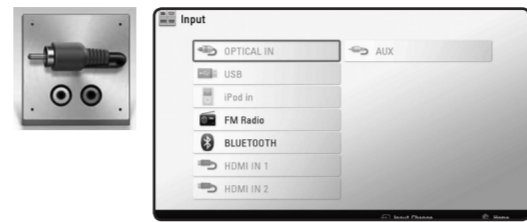
[Premium] - Visar startside för Premium.
 [Premium] - Viser skärmen Premium Home.
 [Premium] - Displays/viser premie hjemme skjerm.
 [Premium] - Näyttää Premium Home näytön.



[Smart Share] - Visar Smart Delningsmeny.
 [Smart Share] - Viser menuen Smart Share.
 [Smart Share] - Viser menyen for Smart Share.
 [Smart Share] - Näyttää Smart Share- valikon.



[LG Smart World] - Visar titlar av LG Apps som tillhandahålls till enheten.
 [LG Smart World] - Viser LG Apps-titler givet till enheten.
 [LG Smart World] - Viser titlar på LG Apps for enheten.
 [LG Smart World] - Näyttää yksikölle toimitetut LG Apps nimikkeet.



[Inngång] - Ändrar inntagning.
 [Indgang] - Ändringar indtastningstilstand.
 [Inngang] - Ender inngang-modus.
 [Syöttö] - Vaihataa tulolaitteen.

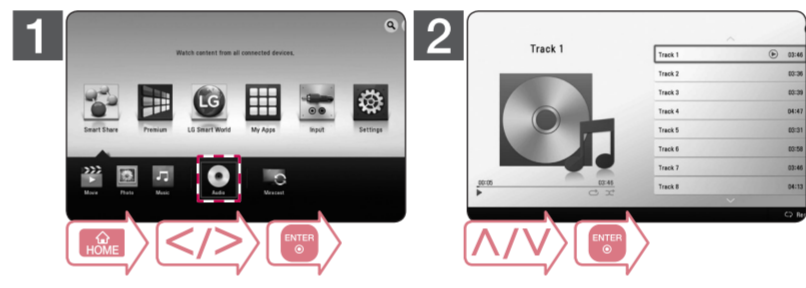
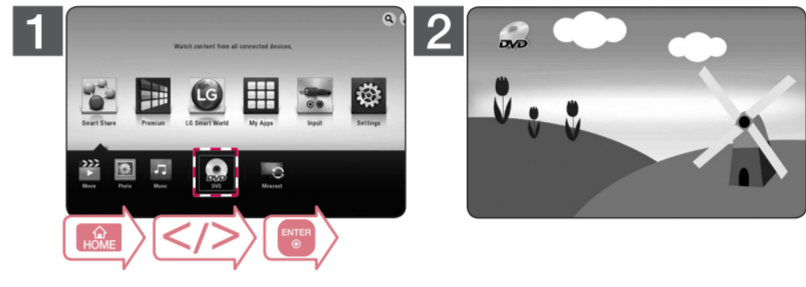
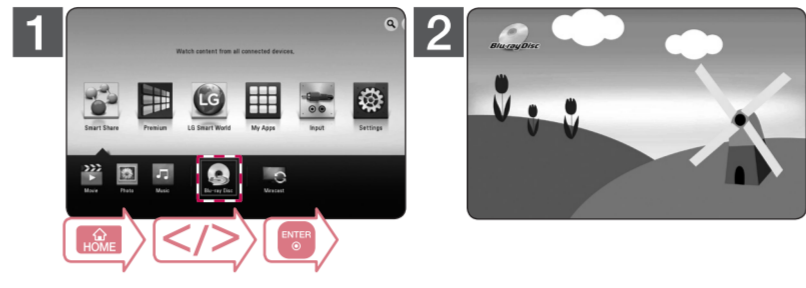
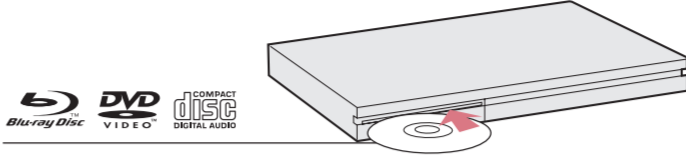
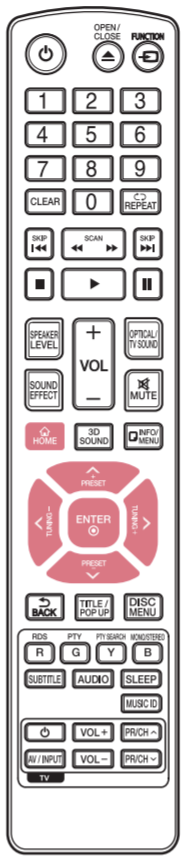


[Inställningar] - Justerar systeminställningarna.
 [Indstillinger] - Justerer system indstillingerne.
 [Instillinger] - Justerer systeminnstillingene.
 [Asetukset] - Säätää järjestelmäasetuksia.

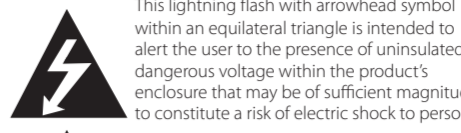


[Mina Appar] - Visar [Mina Appar]-skärmen.
 [Mine programmer] - Viser skærmen [Mine programmer].
 [Mine Programmer] - Viser [Mine Programmer]-skjermen.
 [My Apps] - Näyttää [My Apps]-näytön.

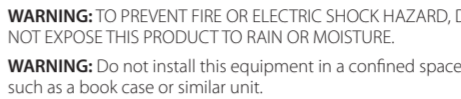
Skivuppjæling / Diskafspilning / Diskavspilling / Levyn toistaminen



CAUTION: TO PREVENT FIRE OR ELECTRIC SHOCK HAZARD, DO NOT REMOVE COVER (OR BACK). NO USER-SERVICEABLE PARTS INSIDE. REFER SERVICING TO QUALIFIED SERVICE PERSONNEL.



This lightning flash with arrowhead symbol within an equilateral triangle is intended to alert the user to the presence of uninsulated dangerous voltage within the product's enclosure that may be of sufficient magnitude to constitute a risk of electric shock to persons.



The exclamation point within an equilateral triangle is intended to alert the user to the presence of important operating and maintenance (servicing) instructions in the literature accompanying the product.

WARNING: TO PREVENT FIRE OR ELECTRIC SHOCK HAZARD, DO NOT EXPOSE THIS PRODUCT TO RAIN OR MOISTURE.

WARNING: Do not install this equipment in a confined space such as a book case or similar unit.

CAUTION: Do not block any ventilation openings. Install in accordance with the manufacturer's instructions.

Slots and openings in the cabinet are provided for ventilation and to ensure reliable operation of the product and to protect it from over heating. The openings shall be never be blocked by placing the product on a bed, sofa, rug or other similar surface. This product shall not be placed in a built-in installation such as a bookcase or rack unless proper ventilation is provided or the manufacturer's instruction has been adhered to.

CAUTION: CLASS 1M VISIBLE AND INVISIBLE LASER RADIATION WHEN OPEN. DO NOT VIEW DIRECTLY WITH OPTICAL INSTRUMENTS.

Use of controls, adjustments or the performance of procedures other than those specified herein may result in hazardous radiation exposure.

CAUTION concerning the Power Cord
 To disconnect power from the mains, pull out the mains cord plug. When installing the product, ensure that the plug is easily accessible.

CAUTION: The apparatus shall not be exposed to water (dripping or splashing) and no objects filled with liquids, such as vases, shall be placed on the apparatus.

This device is equipped with a portable battery or accumulator.

Safety way to remove the battery or the battery from the equipment: Remove the old battery or battery pack, follow the steps in reverse order than the assembly. To prevent contamination of the environment and bring on possible threat to human and animal health, the old battery or the battery put it in the appropriate container at designated collection points. Do not dispose of batteries or battery together with other waste. It is recommended that you use local, free reimbursement systems batteries and accumulators. The battery shall not be exposed to excessive heat such as sunshine, fire or the like.

Disposal of your old appliance

- When this crossed-out wheeled bin symbol is attached to a product it means the product is covered by the European Directive 2002/96/EC.
- All electrical and electronic products should be disposed of separately from the municipal waste stream via designated collection facilities appointed by the government or the local authorities.
- The correct disposal of your old appliance will help prevent potential negative consequences for the environment and human health.
- For more detailed information about disposal of your old appliance, please contact your city office, waste disposal service or the shop where you purchased the product.

Disposal of waste batteries/accumulators

- When this crossed-out wheeled bin symbol is attached to batteries/accumulators of your product it means they are covered by European Directive 2006/66/EC.
- This symbol may be combined with chemical symbols for mercury (Hg), cadmium (Cd) or lead (Pb) if the battery Contains more than 0.0005% of mercury, 0.002% of cadmium or 0.004% of lead.
- All batteries/accumulators should be disposed separately from the municipal waste stream via designated collection facilities appointed by the government or the local authorities.
- The correct disposal of Your old batteries/accumulators will help to prevent potential negative consequences for the environment, animal and human health.
- For more detailed information about disposal of Your old batteries/accumulators, please contact Your city office, waste disposal service or the shop where You purchased the product.

For Wireless product European Union Notice

CE 0984

LG Electronics hereby declares that this/these product(s) is/are in compliance with the essential requirements and other relevant provisions of Directive 1999/5/EC, 2004/108/EC, 2006/95/EC, 2009/125/EC and 2011/65/EU.

Please contact to the following address for obtaining a copy of the DoC (Declaration of Conformity).

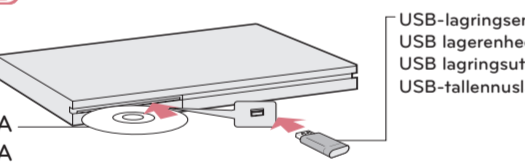
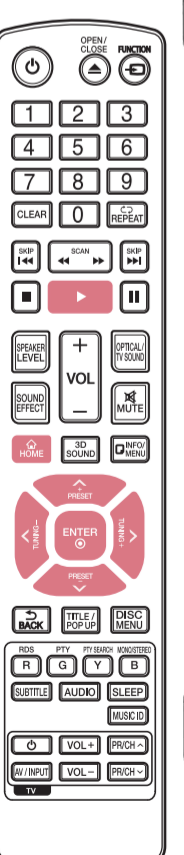
Contact office for compliance of this product:
 LG Electronics Inc.
 EU Representative, Krijgsman 1,
 1186 DM Amstelveen, The Netherlands

• Please note that this is NOT a Customer Service contact point. For Customer Service Information, see Warranty Card or contact the dealer that you purchased this product.

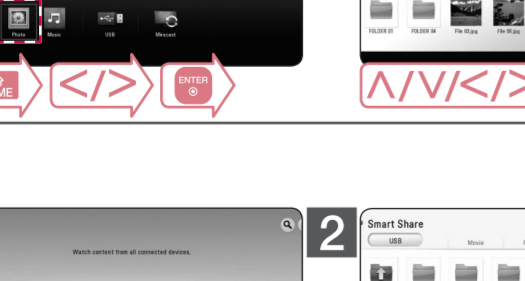
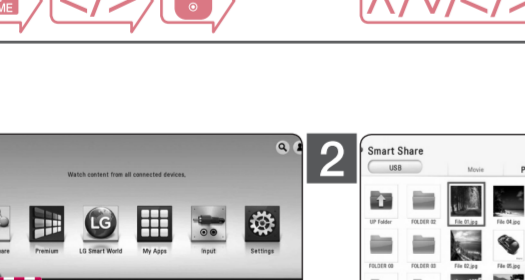
Indoor use only.

RF Radiation Exposure Statement
 This equipment should be installed and operated with minimum distance 20 cm between the radiator and your body.

Datauppjæling / Data afspilning / Dataavspilling / Tietolevyn toistaminen



USB-lagringseenhet
 USB lagrenhed
 USB lagringsutstyr
 USB-tallennuslaite



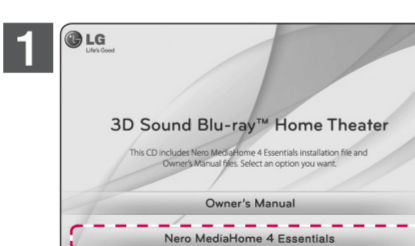
Att använda nätverksuppjæling / Anvendelse af Netværksafspilning / For å bruke nettverksavspilling / Verkon toiston käyttäminen



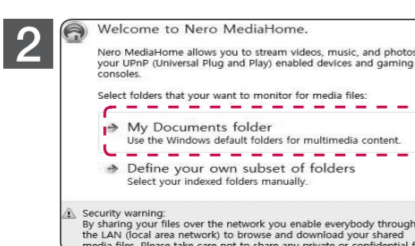
Förberedelse / Forberedelse / Forberedelse / Esivalmistelu



Kontrollera nätverksanslutningen och inställningarna. /
 Kontrollér netværksforbindelse og -opsætning. /
 Sjekker nettverkstilkoblingen og -innstillinger. /
 Tarkista verkon liittäntä ja asetukset.



Installera programmet Nero MediaHome 4 Essentials på din PC. /
 Installér Nero MediaHome 4 Essentials-programmet på din PC. /
 Installer programmet Nero MediaHome 4 Essentials på PC-en. /
 Asenna Nero MediaHome 4 Essentials -ohjelma tietokoneellesi.



Kör programmet och ställ in önskad delningsmapp. /
 Kjør programmet og instill den ønskede delte mapp. /
 Suorita ohjelma, ja aseta haluamasi jaa-kansio.

Smartdelnings-nätverksuppjæling / Smart Share Netværksafspilning / Smart Share Nettverksavspilling / Smart Share -verkon toisto



Specifikation / Specifikation / Spesifikasjoner / Tekniset tiedot



SVENSKA

Strömkraft	Referera till huvud etiketten på bakre panelen.
Strömförbrukning	Referera till huvud etiketten på bakre panelen.
Dimensioner (B x H x D)	Approx. 444 mm x 65 mm X 292,5 mm
Nettovikt (cirka)	3,5 kg
Bus-effekt (USB)	DC 5 V ~ 2.1 A (Fram) / DC 5 V ~ 300 mA (Bakre)

Utformning och specifikationer kan komma att ändras utan föregående meddelande.

DANSK

Krav til strömforsyning	Der henvises til primære etiket på bagsiden.
Strömförbrug	Der henvises til primære etiket på bagsiden.
Dimensioner (B x H x D)	Approx. 444 mm x 65 mm X 292,5 mm
Nettovægt (ca.)	3,5 kg
Bus-strömforsyning (USB)	DC 5 V ~ 2.1 A (Forside) / DC 5 V ~ 300 mA (Bagerst)

Design og specifikationer kan ændres uden forudgående varsel.

Meddelande om Open Source-mjukvara

For att få den korresponderade käll kod under GPL, LGPL och andra öppna käll licenser, vänligen besök <http://opensource.lge.com>. Alla refererade licens termer, garantier avstående och copyright notiser finns att ladda ner med käll kod.

Bemærkning om open source-software

For at opnå den tilsvarende kildekode under GPL, LGPL og muiden avoimien lähteiden lisensien alaisuudessa, vieralle osoitteessa <http://opensource.lge.com>. Alle nævnte licensbetingelser, garanti- og copyright er tilgængelige for download med kildekode.

NORSK

Strömkraft	Referer til hovedmerkingen på bakpanelet.
Strömforbruk	Referer til hovedmerkingen på bakpanelet.
Mål (B x H x D)	Ca. 444 mm x 65 mm X 292,5 mm
Nettovekt (ca.)	3,5 kg
Bus Power Supply (USB)	DC 5 V ~ 2.1 A (Front) / DC 5 V ~ 300 mA (Bak)

Design og spesifikasjoner kan ændres uten forvarsel.

SUOMI

Käyttöjännite	Viittaus takapaneelin arvokilpeen.
Tehonkulutus	Viittaus takapaneelin arvokilpeen.
Mitat (L x K x S)	Noiin 444 mm x 65 mm X 292,5 mm
Nettopaino (noin)	3,5 kg
Väylin virransyöttö (USB)	DC 5 V ~ 2.1 A (Etuosa) / DC 5 V ~ 300 mA (Takaosa)

Tuotteen konstruktio ja tekniset eritellyt saattavat muuttua ilman ennakkoilmoitusta.

Merknad Åpen-kilde software

For korresponderende kildekode under GPL, LGPL og andre åpen-kilde lisenser, besøk <http://opensource.lge.com>. Alle refererte lisensvilkår, garantifrisigelser og copyright-vern er tilgjengelig for nedlasting med kildekode.

Huomautus koskien avointa lähdekoodia

Oikean lähdekoodin vastaanottamiseksi GPL, LGPL ja muiden avoimien lähteiden lisensien alaisuudessa, vieralle osoitteessa <http://opensource.lge.com>. Kaikki viitatuissa lisenssi ehdot, takuuvastuuvapautuslausekkeet ja huomautukset tekijänoikeuksiin ovat ladattavissa lähdekoodin kanssa.



LG Customer Information Center		
(Asiakaspalvelu / Kundenservice / Kundtjänst)		
Denmark / Danmark	8088 57 58	
Finland / Suomi	0800 0 LG LG (0800 0 54 54)	
Norway / Norge	800 187 40	
Sweden / Sverige	0770 LG LG LG (0770 54 54 54)	
LG Website		
www.lg.com		

En del av innehållet i denna handbok kan skilja sig från din spelare beroende på vilken programvara av spelaren eller din tjänsteleverantör. /
 Noget af indholdet i denne vejledning kan afvige i forhold til din afspiller, alt efter afspillerens software eller din tjensteudbyder. /
 Noe av innholdet i denne brukerveiledningen kan skille seg fra spilleren din, avhengig av programvaren på spilleren eller tjensteleverandøren din. /
 Jotkin sisällöt tässä ohjekirjassa voivat erota soittimesi osalta riippuen soittimen ohjelmistosta tai palveluntuottajastasi.