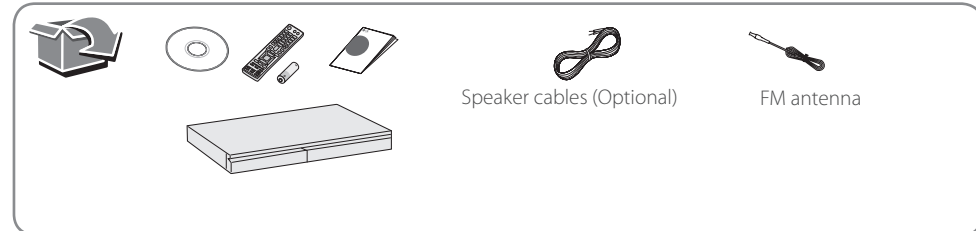


3D Blu-ray™
/ DVD Home
Theater System

LHB655W

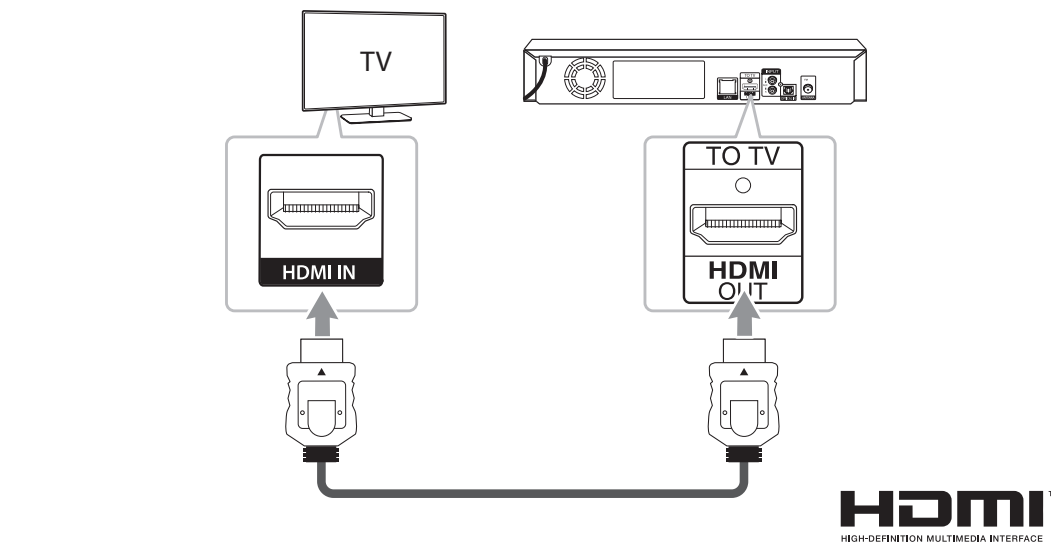
ENGLISH | SIMPLE MANUAL

To view the instructions of advanced features, visit <http://www.lg.com> and then download Owner's Manual. Some of the content in this manual may differ from your unit.

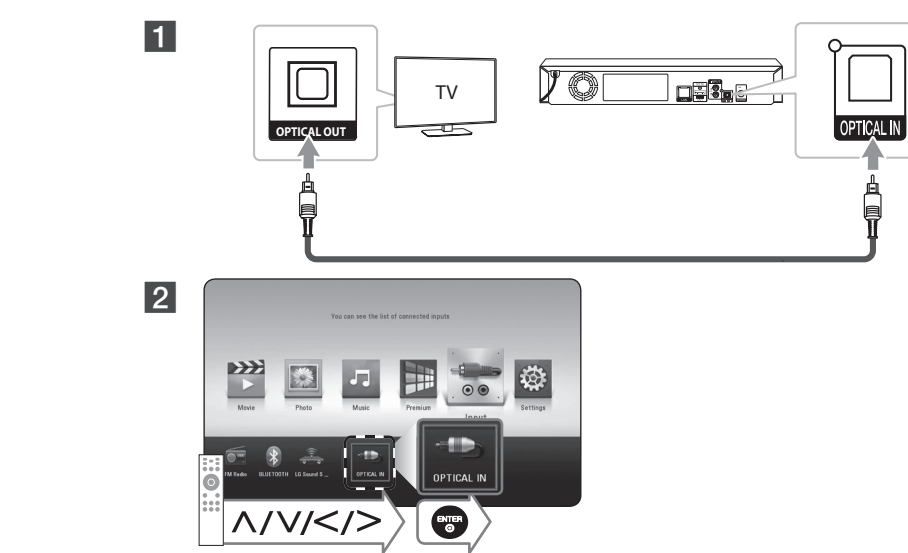


www.lg.com

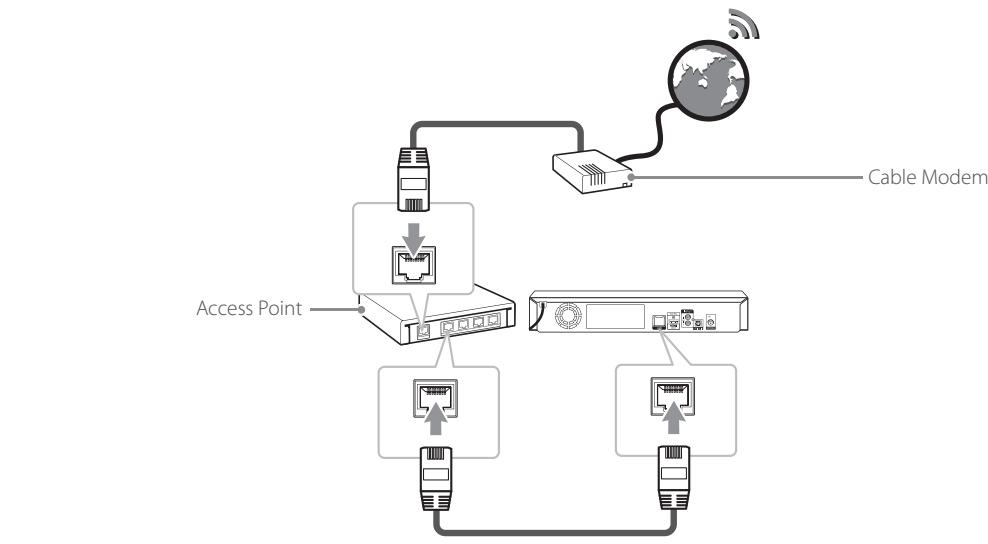
TV Connection (HDMI OUT)



TV Connection (OPTICAL IN)

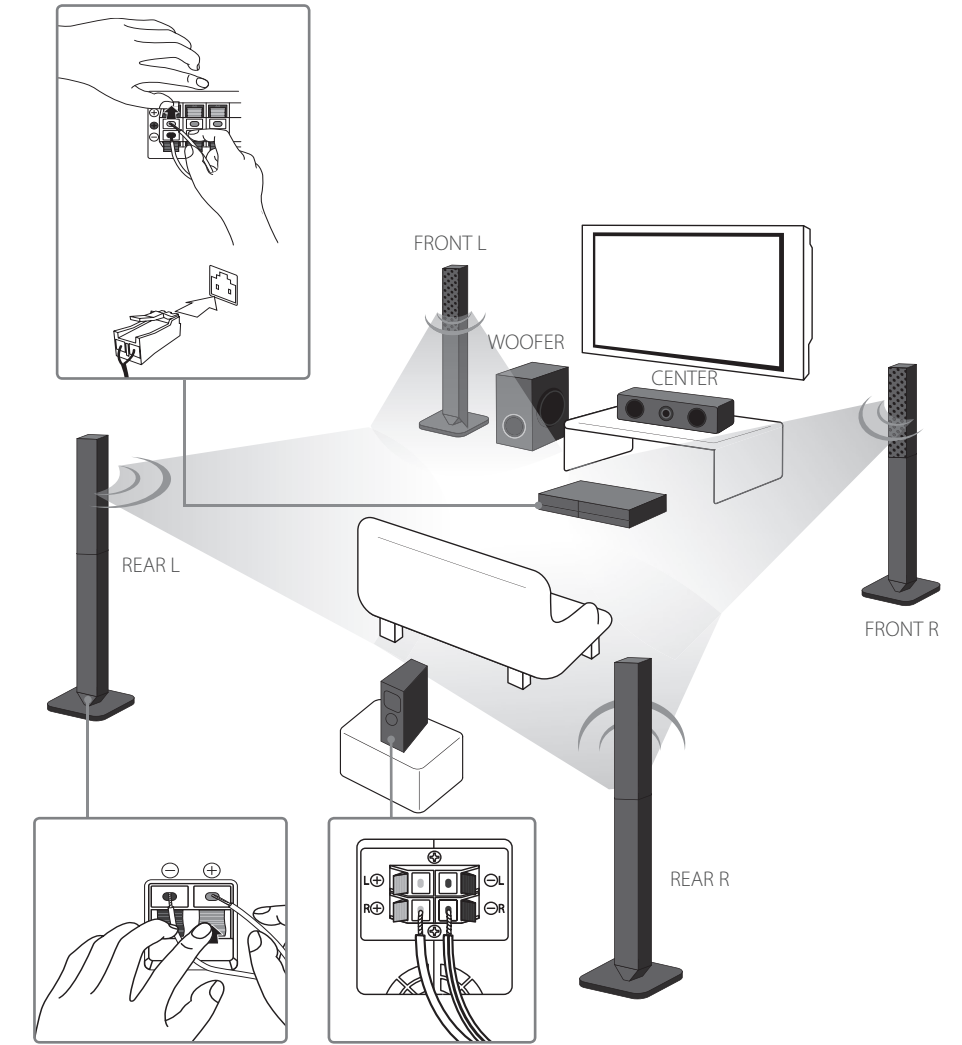


Wired Network Connection

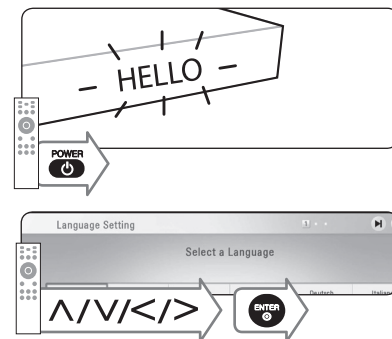


Speaker Connection

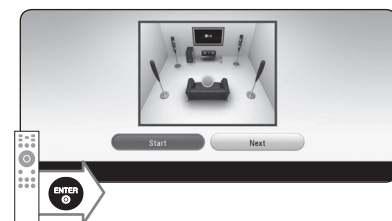
1 Speaker design and connection method may be different according to models.



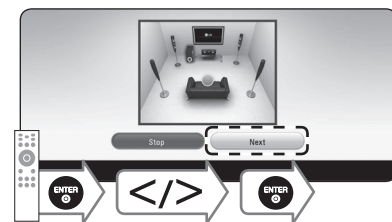
Initial Setup



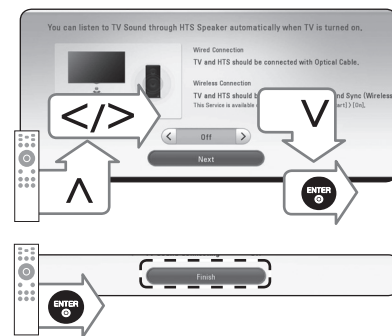
Follow the directions for the initial setup displayed on the screen.



Start the speaker test.

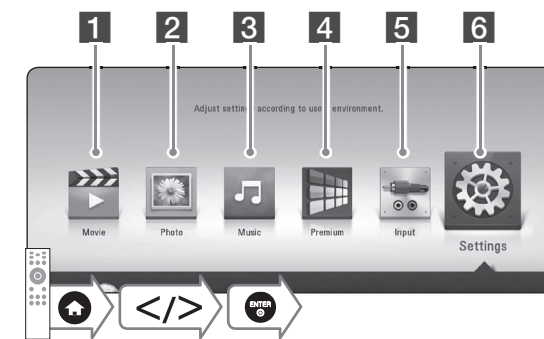


Stop the speaker test and select [Next].



Setup [TV Sound Connecting] and select [Next].

Using HOME menu



1 Plays video content.

2 Plays photo content.

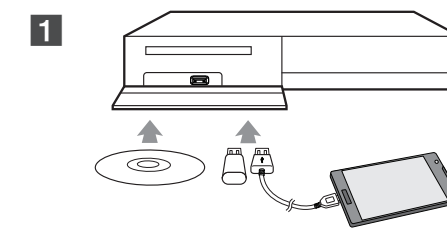
3 Plays audio content.

4 Displays the Premium Home screen.

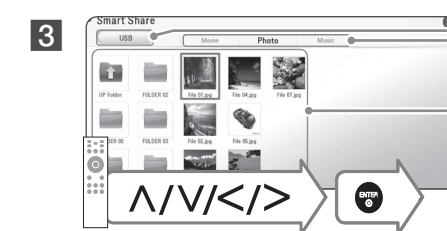
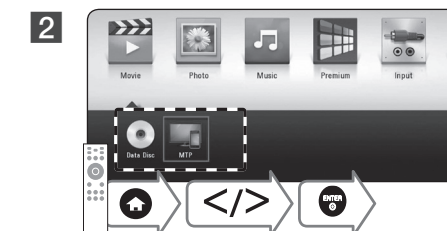
5 Changes input mode.

6 Adjusts the system settings.

Disc, Data Playback



1 Devices that support MTP.



Displays all linked devices.

Selects video, photo or audio content.

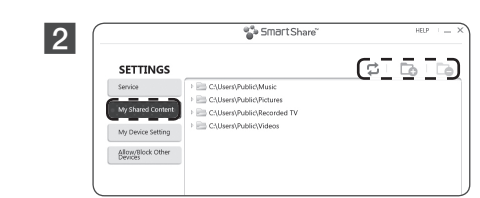
Displays the file or folder on linked device.

1 For the most Audio CD, BD-ROM and DVD-ROM discs, playback starts automatically.

Network Playback

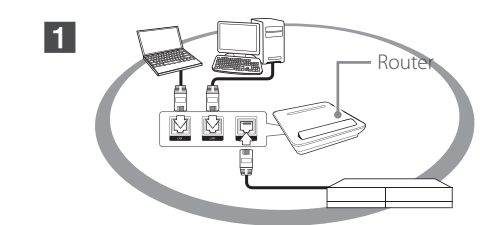
SmartShare PC software Installation

1 Install SmartShare PC software.

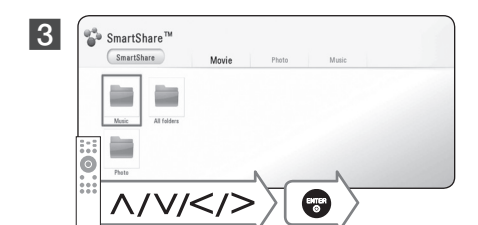
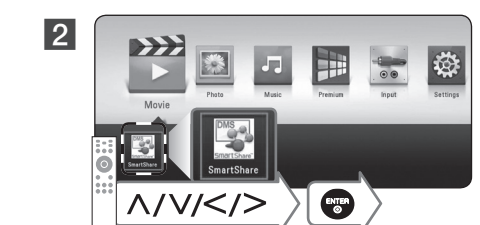


Run the program, and set the share folder you want.

SmartShare Network Playback



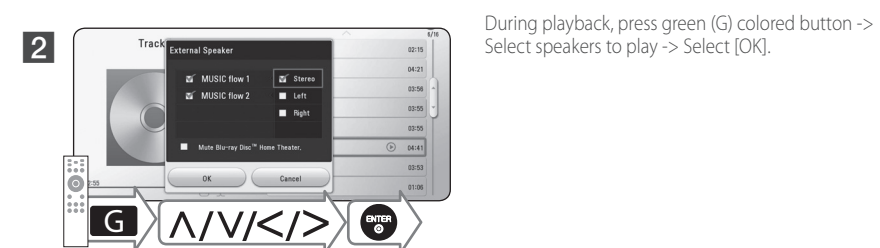
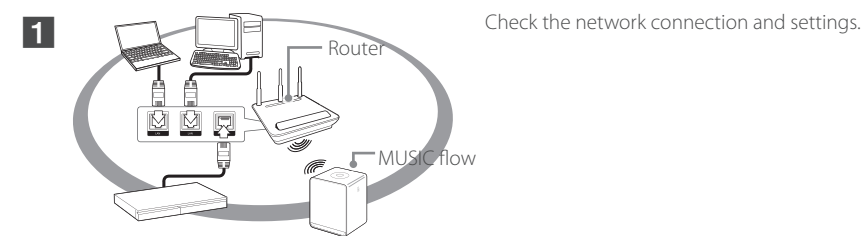
Check the network connection and settings.





Enjoying with LG Multi-room Audio (LG Music Flow)

LG smart Hi-Fi audio system MUSIC flow allows you to enjoy music with the several speaker wirelessly.



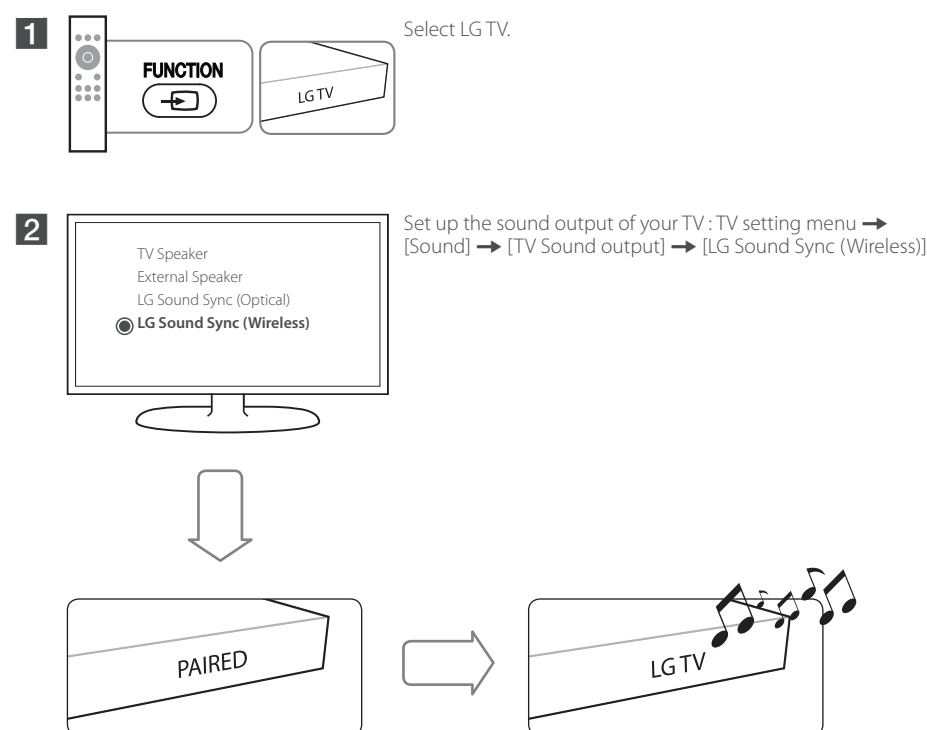
- If you use this unit with MUSIC flow, at least one unit should be connected by LAN cable. For more detail for use with MUSIC flow, refer to the MUSIC flow's user manual.
- It is recommended to connect up to 4 speakers for smooth playback.
- When you perform private sound mode, this function is unavailable.
- This function is available for only audio contents.



LG Sound Sync



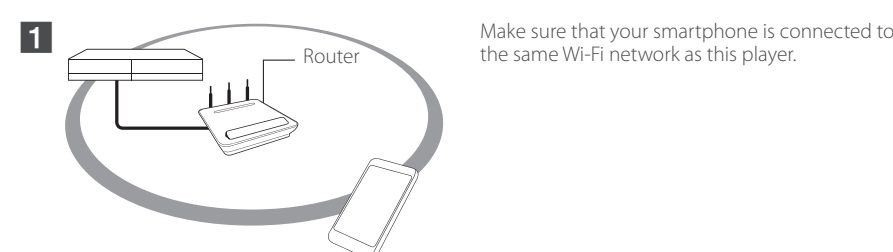
LG Sound Sync enables you to control some functions of this unit by a remote control of your LG TV. Controllable functions are volume up/down and mute. Make sure that your TV has LG Sound Sync logo as shown above.



! Details of TV setting menu vary depending on the models of your TV.



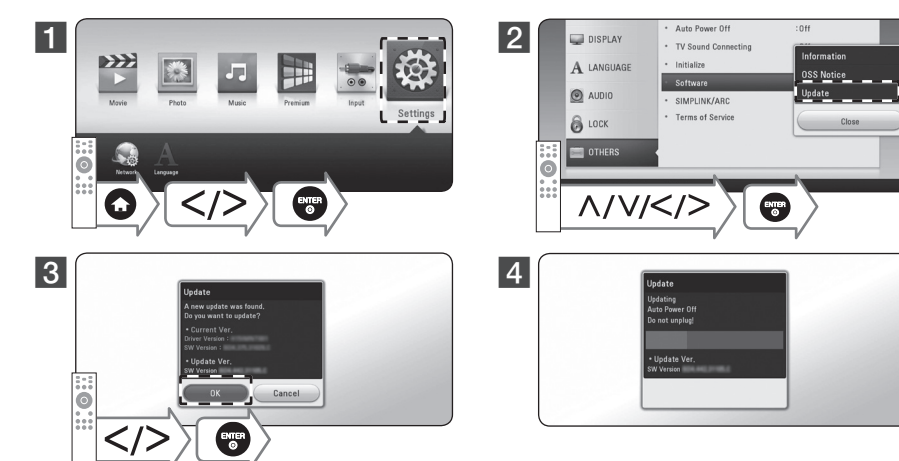
Enjoying Private Sound



- ! Download "LG AV Remote" on the iTunes store or Google Play Store.
- Not all modes support sound privacy and pairing multiple devices is not available.
- When you use the unit with MUSIC flow, private sound mode is unavailable.



Software Update



! Before updating software, the unit should be connected to your home network.



Additional Information

How to disconnect the wireless network connection or the wireless device
Turn off the unit.



Additional Information

Customer Support

You can update the Player using the latest software to enhance the products operation and/or add new features. To obtain the latest software for this player (if updates become available), perform the software updates as written or visit <http://www.lg.com> or contact LG Electronics customer care centre.

OPEN SOURCE SOFTWARE NOTICE

To obtain the source code under GPL, LGPL, MPL and other open source licenses, that is contained in this product, please visit <http://opensource.lge.com>. In addition to the source code, all referred license terms, warranty disclaimers and copyright notices are available for download. LG Electronics will also provide open source code to you on CD-ROM for a charge covering the cost of performing such distribution (such as the cost of media, shipping and handling) upon email request to opensource@lge.com. This offer is valid for three (3) years from the date on which you purchased the product.

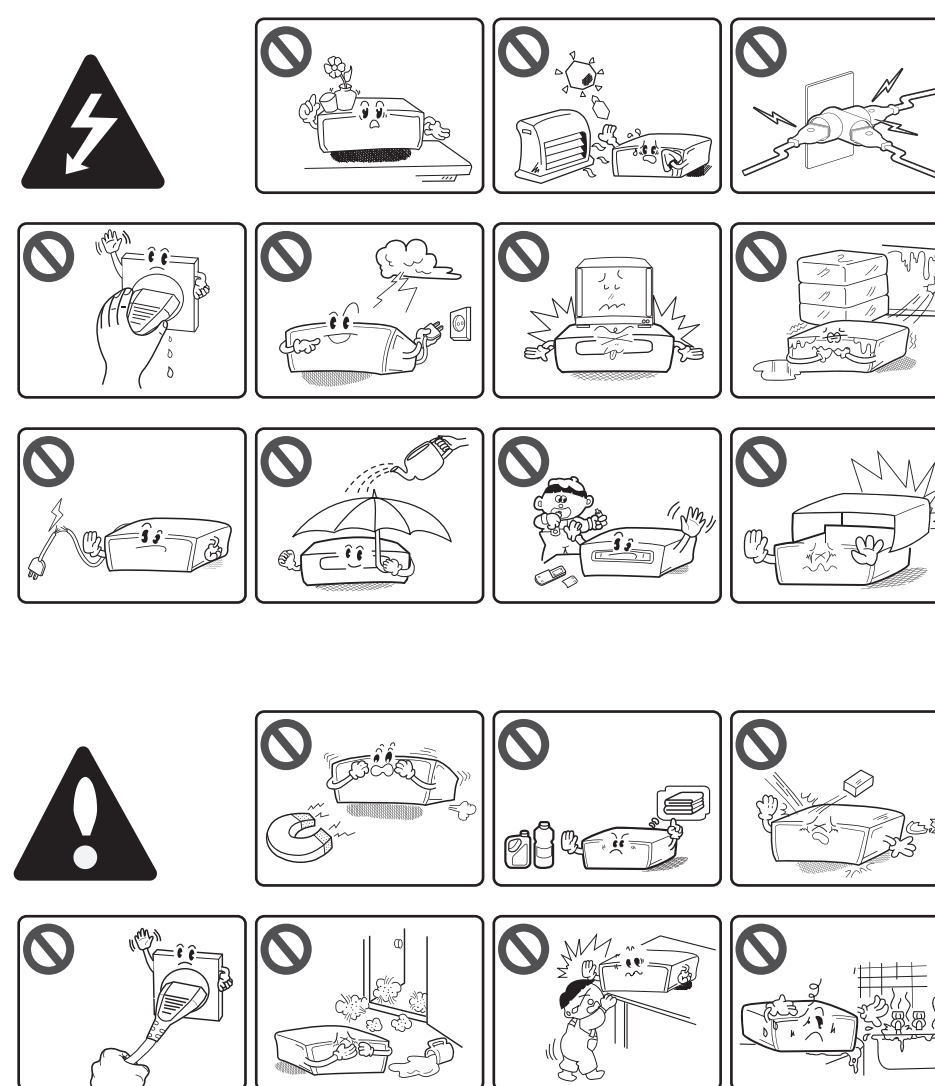


Specification

ENGLISH	
Power requirements	Refer to main label.
Power consumption	Refer to main label. Networked standby: 0.5 W (If all network ports are activated.)
Dimensions (W x H x D)	Approx. 360 mm x 60.5 mm x 299 mm
Net Weight (Approx.)	2.7 kg
Bus Power Supply (USB)	5 V $\overline{\text{---}}$ 500 mA
Design and specifications are subject to change without notice.	



Safety Information



CAUTION
RISK OF ELECTRIC SHOCK
DO NOT OPEN

CAUTION: TO REDUCE THE RISK OF ELECTRIC SHOCK DO NOT REMOVE COVER (OR BACK) NO USER-SERVICEABLE PARTS INSIDE. REFER SERVICING TO QUALIFIED SERVICE PERSONNEL.

This lightning flash with arrowhead symbol within an equilateral triangle is intended to alert the user to the presence of uninsulated dangerous voltage within the product's enclosure that may be of sufficient magnitude to constitute a risk of electric shock to persons.

The exclamation point within an equilateral triangle is intended to alert the user to the presence of important operating and maintenance (servicing) instructions in the literature accompanying the product.

WARNING: TO PREVENT FIRE OR ELECTRIC SHOCK HAZARD, DO NOT EXPOSE THIS PRODUCT TO RAIN OR MOISTURE.

WARNING: Do not install this equipment in a confined space such as a book case or similar unit.

CAUTION: Do not use high voltage products around this product. (ex. Electrical swatter) This product may malfunction due to electrical shock.

CAUTION: Do not block any ventilation openings. Install in accordance with the manufacturer's instructions. Slots and openings in the cabinet are provided for ventilation and to ensure reliable operation of the product and to protect it from over heating. The openings shall be never be blocked by placing the product on a bed, sofa, rug or other similar surface. This product shall not be placed in a built-in installation such as a bookcase or rack unless proper ventilation is provided or the manufacturer's instruction has been adhered to.



CAUTION: This product employs a Laser System. To ensure proper use of this product, please read this owner's manual carefully and retain it for future reference. Shall the unit require maintenance, contact an authorized service center. Use of controls, adjustments or the performance of procedures other than those specified herein may result in hazardous radiation exposure. To prevent direct exposure to laser beam, do not try to open the enclosure.

CAUTION concerning the Power Cord
The Power Plug is the disconnecting device. In case of an emergency, the Power Plug must remain readily accessible.
CAUTION: The apparatus shall not be exposed to water (dripping or splashing) and no objects filled with liquids, such as vases, shall be placed on the apparatus.

This device is equipped with a portable battery or accumulator.

Safety way to remove the battery or the battery from the equipment: Remove the old battery or battery pack, follow the steps in reverse order than the assembly. To prevent contamination of the environment and bring on possible threat to human and animal health, the old battery or the battery put it in the appropriate container at designated collection points. Do not dispose of batteries or battery together with other waste. It is recommended that you use local, free reimbursement systems batteries and accumulators. The battery shall not be exposed to excessive heat such as sunshine, fire or the like.

- The appliance is not intended for use by young children or infirm persons without supervision.
- Young Children should be supervised to ensure that they do not play with appliance.
- If the appliance is supplied from a cord extension set or an electrical portable outlet device, the cord extension set on electrical portable outlet device must be positioned so that it is not subject to splashing or ingress of moisture.

RF Radiation Exposure Statement
This equipment should be installed and operated with minimum distance 20 cm between the radiator and your body.