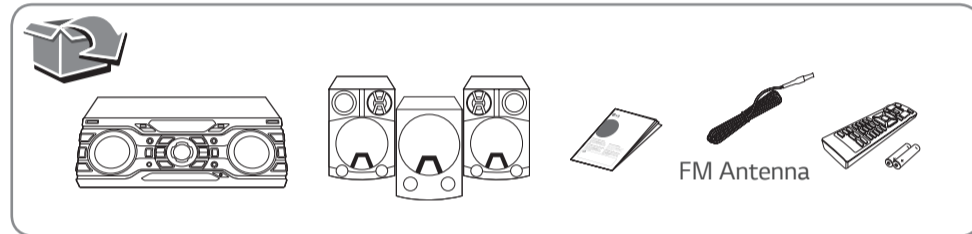


Mini Hi-Fi System

Model : CM8450

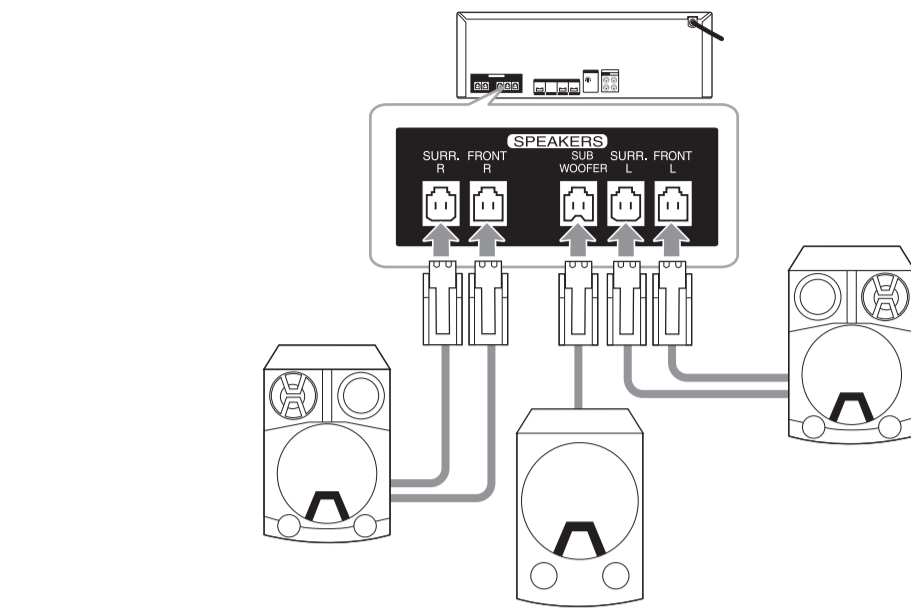
ENGLISH | SIMPLE MANUAL (1 of 2)

To view the instructions of advanced features, visit <http://www.lg.com> and then download Owner's Manual. Some of the content in this manual may differ from your unit.



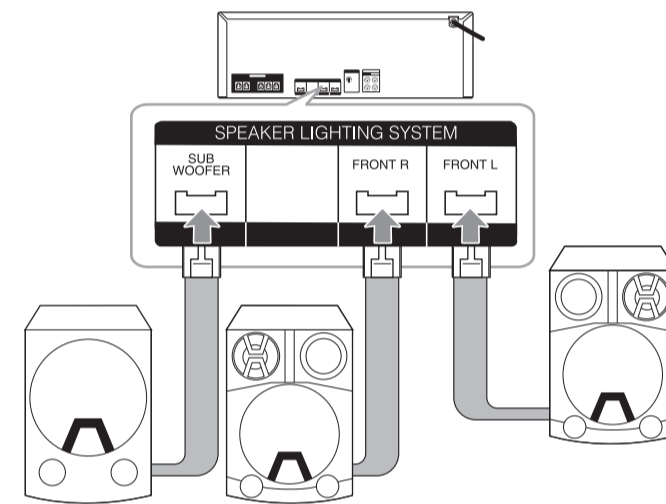
www.lg.com

Speaker Connection



! Make sure to connect the speaker plugs into their corresponding colored speaker connectors.

Connection for SPEAKER LIGHTING

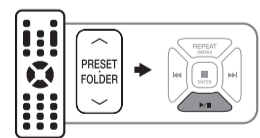


Disc & Data Playback

1. Insert a CD or USB drive into the front-loading tray.
2. Press the **FUNCTION** button on the remote control. Select CD, USB 1 or USB 2.
3. Press **◀▶** to select a desired song and press **▶||** to play.

Folder Searching

Press **PRESET-FOLDER** **▲/▼** to select a folder and press **▶||** to play the first file of the selected folder.



! Empty folders are not searched.

Radio Operation

1. Connect the antenna to the back of the unit.
2. Press the **FUNCTION** button on the remote control. Select FM.
3. Tune the desired frequency. (Press and hold for auto tuning. Press for Manual tuning.)

! Select STEREO or MONO on FM Function.

Using External Device (Ⓜ or Ⓜ)

1.
 - AUX IN Connection**: Connect the external device to the AUX IN port on the back of the unit.
 - PORT. IN Connection**: Connect the external device to the PORT. IN port on the back of the unit.
2. Press the **FUNCTION** button on the remote control. Select AUX or PORTABLE.
3. Play the music on the connected external device.

X-BOOM PLUS

You can connect two units to play music together.

1. Connect the X-BOOM PLUS cable between the two units.
2. Press **X-BOOM PLUS/DEMO** on the remote control.
3. Rotate **SCRATCH & CONTROL** to adjust Delay setting.
4. Press **X-BOOM PLUS/DEMO** to save the Delay setting.

! This function is available on CD, USB 1, USB 2, BT, PORTABLE Function.

Presetting Radio Station

1. Press the **FUNCTION** button on the remote control. Select the station to preset.
2. Press **PROGRAM MEMORY**, **PRESET FOLDER**, and **PROGRAM MEMORY** on the remote control. Select the preset number and store the station.
3. Press the **PRESET FOLDER** button on the remote control. Select preset station to listen to.

To delete all the saved station

1. Press and hold **PROGRAM/MEMORY** on the remote control.
2. Press **PROGRAM/MEMORY** when "ERASEALL" blinks to confirm.

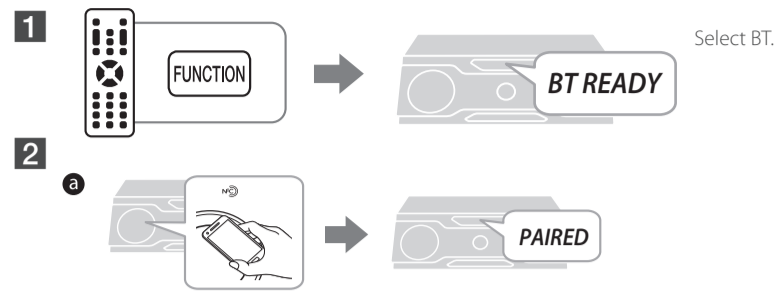
Deleting File

1.
 - Select the file you want to delete in stop mode.
 - Select the folder you want to delete.
2. Press **DEL FILE**, **DEL DIR**, or **FORMAT** on the remote control. Select to delete the file, folder or format the USB.
3. Press **DELETE** on the remote control.
 - Cancel the selection.
 - Perform the selection.

! This function is supported only in stop status. (USB only).

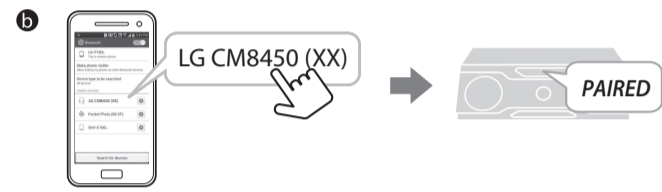


Using BLUETOOTH®



- When this unit is successfully connected with your **Bluetooth** device, "PAIRED" will appear on the display window. The display will change to the **Bluetooth** device's name soon after.
- If the device name isn't available on the unit, "_ " will be displayed.
- Even when this unit is connected to 3 **Bluetooth** devices in the **Bluetooth** mode, you can play and control music by using only one of the connected devices.
- The multi pairing connection is only supported on Android or iOS devices. (Multi pairing connection may not be supported depending on the connected device specifications.)
- A removable/detachable **Bluetooth** device (Ex : Dongle etc.) doesn't support multi pairing.
- Even when this unit is connected with multiple **Bluetooth** devices, only one device which is playing will keep the **Bluetooth** connection, even if you change the function of the other devices.

- If NFC connection does not work well, try again after checking the location of NFC tag in your phone.
- Android O/S : Ver 4.1.2 (or later)



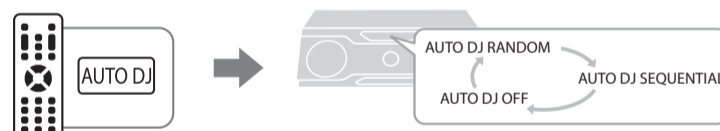
Set on the **Bluetooth** and select "LG CM8450 (XX)" on your **Bluetooth** device.

- Enter the PIN code (0000) as needed.



AUTO DJ

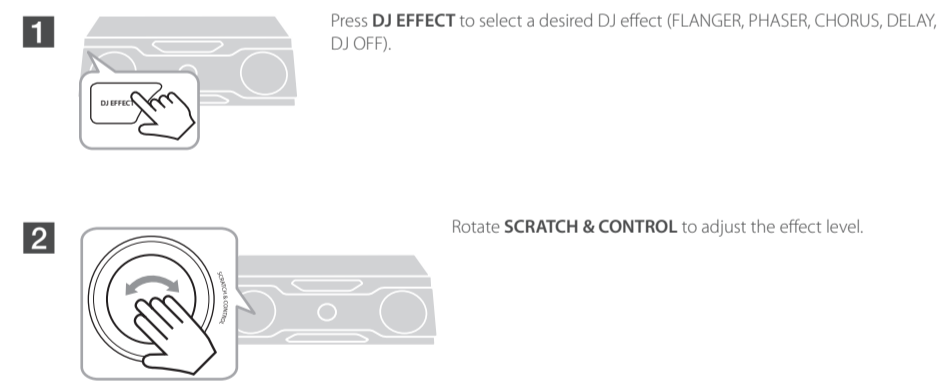
Auto DJ blends the end of one song into the beginning of another for seamless playback.



Select a desired AUTO DJ mode.

- AUTO DJ SEQUENTIAL is selected when playing programmed list.

DJ EFFECT

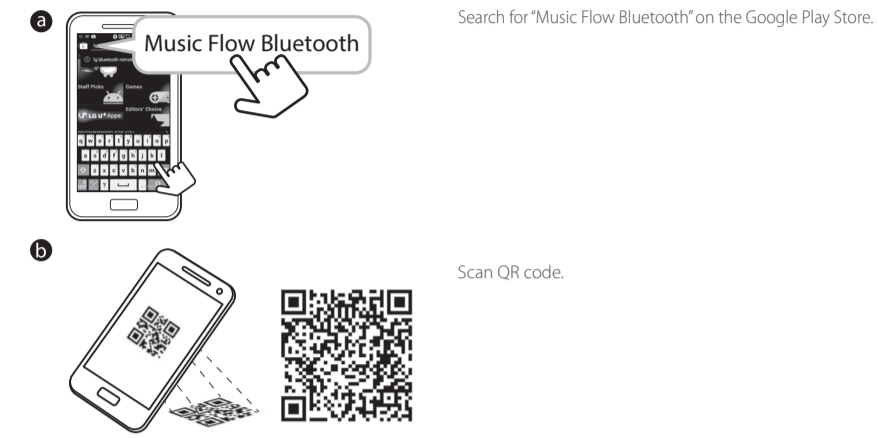


- You can adjust DJ EFFECT sound gage level between 0 to 15. The initial level is 7.



Using Music Flow Bluetooth App

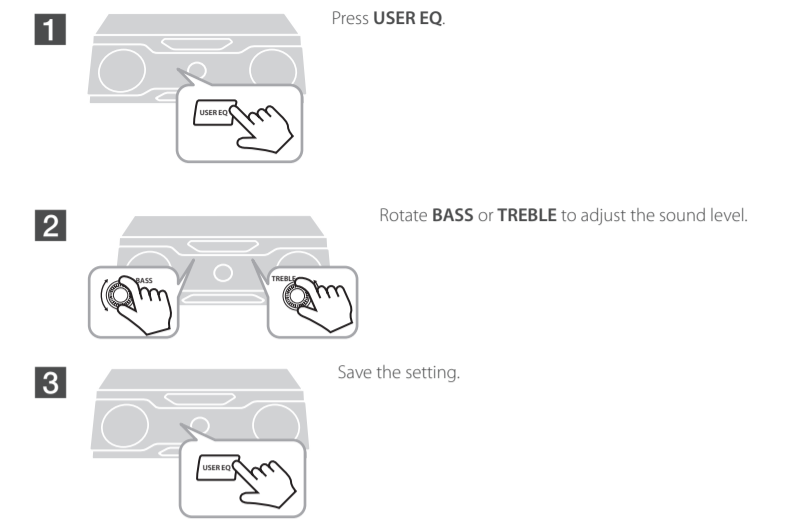
To use this unit more comfortably, install "Music Flow Bluetooth" on your **Bluetooth** devices. Select a way of installation (a) or (b).



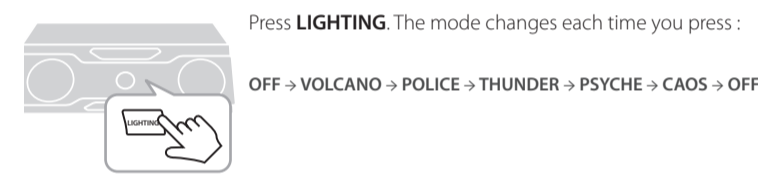
- Android O/S : Ver 4.0.3 (or later)
- Refer to the guide from the "Music Flow Bluetooth" App on your smart device.



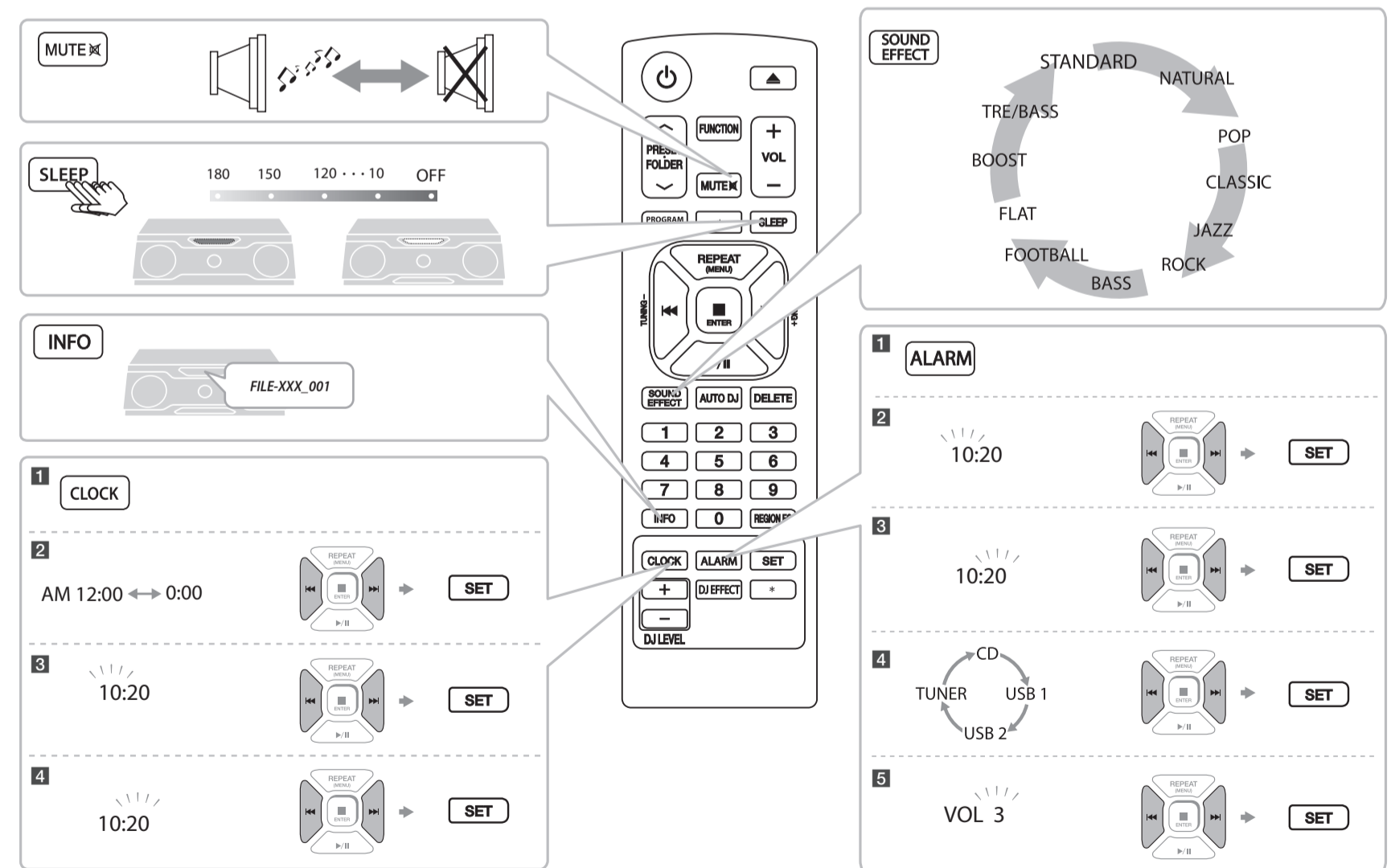
USER EQ



LIGHTING



Additional Feature



- Alarm function works only after clock is set.

Mini Hi-Fi System

Model : CM8450

ENGLISH | SIMPLE MANUAL (2 of 2)

To view the instructions of advanced features, visit <http://www.lg.com> and then download Owner's Manual. Some of the content in this manual may differ from your unit.



MFL6860012

www.lg.com



Programmed Playback

You can make a playlist of your favourite tracks/files from a disc or USB device using programmed Playback.

! This function is supported only on stop status.

To make Programmed Playback list

- 1** Select CD, USB 1 or USB 2.
 - 2** Press PROGRAM/MEMORY.
 - 3** Press ◀▶ to select a track/file and press PROGRAM/MEMORY. Repeat this step to store more files.
 - 4** Enjoy the music on the Programmed Playback list.
- !**
- To delete all of the Programmed Playback list, remove the CD or USB device from the unit.
 - A playlist of up to 20 tracks/files can be entered for each media.

To enjoy Programmed Playback

- 1** Press PROGRAM/MEMORY in stop mode.
- 2** Play the Programmed Playback list.

! Press ■ ENTER twice to exit from Programmed Playback mode.

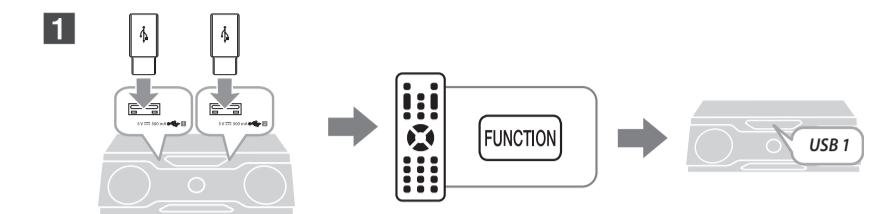


To delete Programmed Playback List

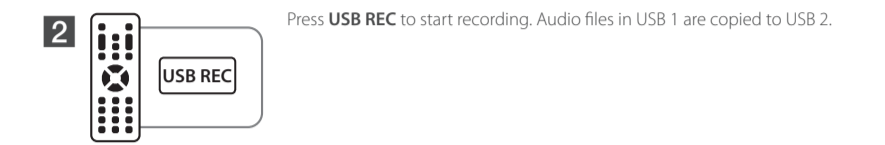
- 1** Press PROGRAM/MEMORY in stop status.
- 2** Press to select a track/file to delete.
- 3** Delete selected song.



USB Copying



Connect USB devices to USB ports and select USB 1.



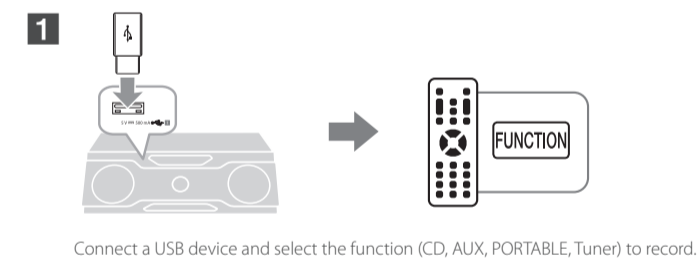
Press USB REC to start recording. Audio files in USB 1 are copied to USB 2.

! Press ■ ENTER to stop recording.

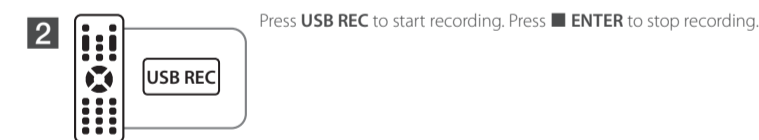
Status	Recording
Playback	One track/file
Programmed playback	Programmed track(s)/file(s)
Full stop	All track(s)/file(s)



USB Recording



Connect a USB device and select the function (CD, AUX, PORTABLE, Tuner) to record.



Press USB REC to start recording. Press ■ ENTER to stop recording.

- !**
- A file is recorded by about 512 Mbyte when you record for a long term.
 - When you stop recording during playback, the file that has recorded at that time will be stored. (Except MP3/WMA file)
 - Recording is not supported in BT or LG TV mode.
 - Volume level will be changed between MIN to 30 during recording. (Only CD function)
 - Press ▶/|| to pause the recording. (Only Tuner, AUX, PORTABLE)
 - It'll be stored as follows. * The other source : AUX and the like.

AUDIO CD	MP3/WMA	TUNER	The other source*
<ul style="list-style-type: none"> CD_REC TRK_0001 TRK_0002 	<ul style="list-style-type: none"> FILE_REC ABC(file name) DEF(file name) 	<ul style="list-style-type: none"> TUNER_REC AUX/PORT/USB : : 	<ul style="list-style-type: none"> OTHERS_REC AUDIO_0001 AUDIO_0002

To select bitrate and recording speed

You can select bitrate and recording speed before recording.

- 1** Press and hold USB REC for 3 seconds.
- 2** Press ◀▶ to select a bitrate and press USB REC.
- 3** Press ◀▶ to select a recording speed and press USB REC. (Only CD function)

!

Status	Recording (Only CD function)
Playback	One track/file
Programmed playback	Programmed the track(s)/file(s)
Full stop	All track(s)/file(s)



Auto Power On



This unit automatically turns on by an input source : LG TV or **Bluetooth**
If you have already paired with this unit, automatically this unit can turn on by an input source when this unit is turned off.



Auto Function Change

This unit recognizes input signals such as **Bluetooth** and LG TV and then changes suitable function automatically.



Additional Information

Music File Requirement

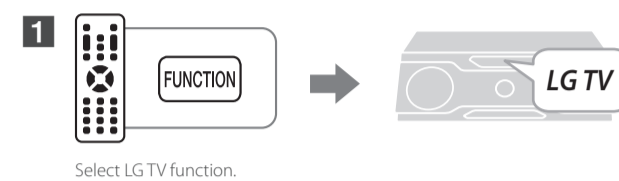
Sampling frequency	<ul style="list-style-type: none"> MP3 : 32 - 48 kHz WMA : 32 - 48 kHz
Bit rate	<ul style="list-style-type: none"> MP3 : 32 - 320 kbps WMA : 40 - 192 kbps
Maximum files	Data CD : 999 / USB : 2000
Maximum folders	Data CD : 99 / USB : 200
File extensions	<ul style="list-style-type: none"> *.mp3* *.wma*
CD-ROM file format	ISO9660+JOLIET
USB Flash Drive	Devices that support USB2.0 or USB1.1.
Bluetooth	Codec : SBC

- The USB function of this unit does not support all USB devices.
- Using NTFS file system is not supported. (Only FAT(16/32) file system is supported.)
- External HDD, Card readers, Locked devices, or hard type USB devices are not supported.
- The DTS is not supported. In case of DTS audio format, audio is not output.



LG Sound Sync

LG Sound Sync enables you to control some functions of this unit by a remote control of your LG TV. Controllable functions are volume up/down and mute. Make sure that your TV has LG Sound Sync logo as shown above.



- For specific information of operating, refer to the instruction manual of your TV.
- If the connection fails, check the conditions of this unit and your TV : power, function.
- The amount of time to turn off this unit is different depending on your TV.



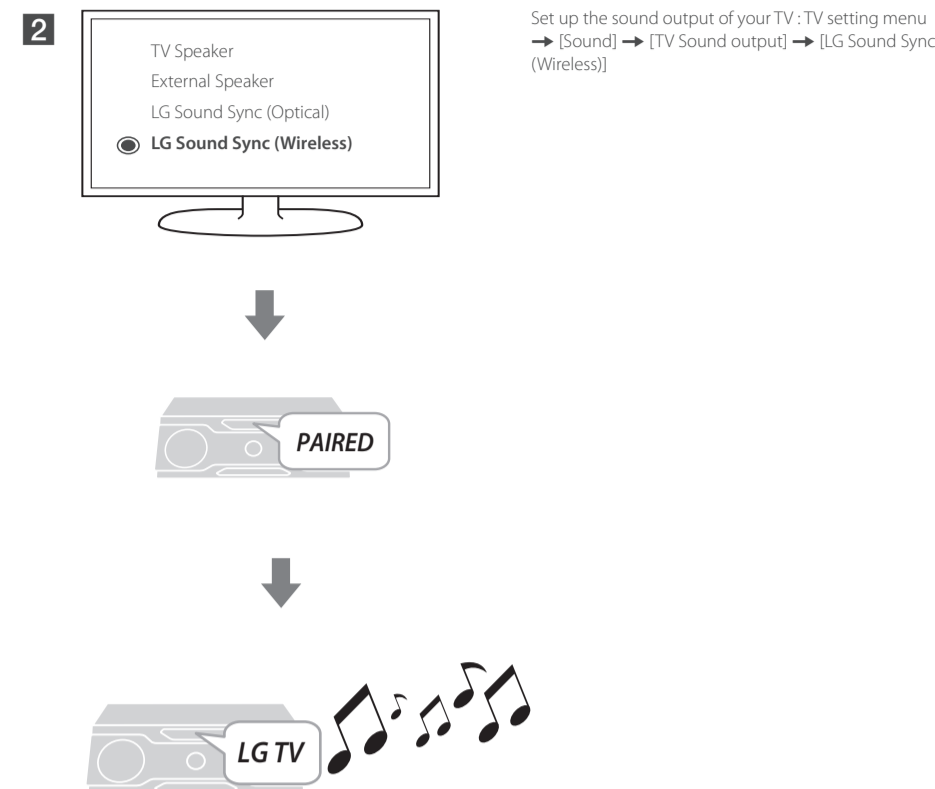
Specification

ENGLISH

Power Requirements	Refer to the main label on the unit.
Power Consumption	Refer to the main label on the unit. Networked standby : 0.4 W (if all network ports are activated)
Bus Power Supply (USB)	5 V $\overline{\text{DC}}$ 500 mA
Total Output	2500 W

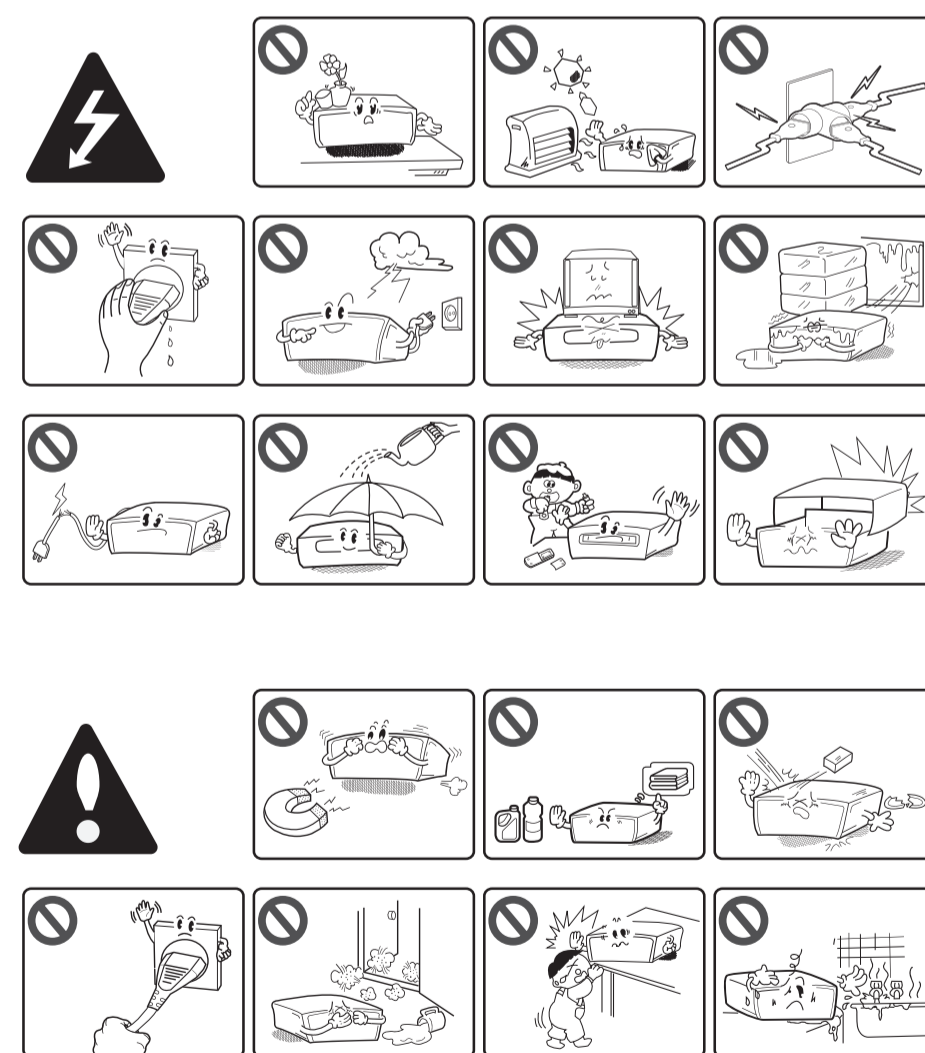
Design and specifications are subject to change without notice.

How to disconnect the wireless network connection or the wireless device
Turn off the unit by pressing the power button for more than 5 seconds.



- For specific information of operating, refer to the instruction manual of your TV.
- If the connection fails, check the conditions of this unit and your TV : power, function.
- The amount of time to turn off this unit is different depending on your TV.

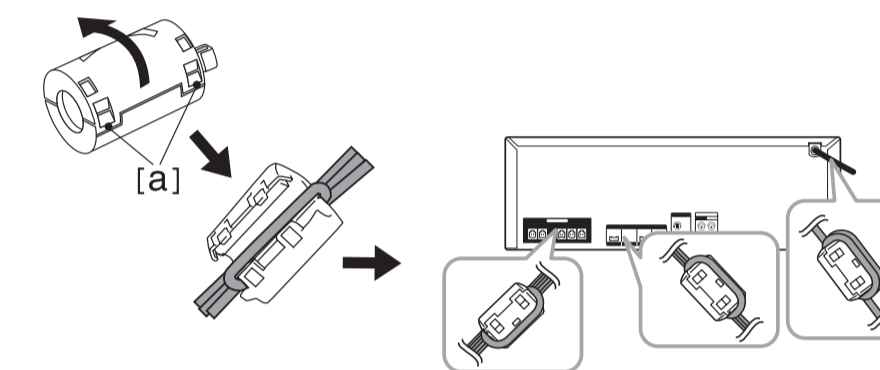
Safety Information



How to affix the Ferrite Core

Ferrite core may not be provided depending on each nation's regulations.

- Pull the stopper [a] of the ferrite core to open.
- Wind the power cord around the ferrite core twice (Once for 110V cord). Wind the SPEAKERS cables around the ferrite core once. Wind the SPEAKER LIGHTING cables around the ferrite core once.
- Close the ferrite core until it clicks.



CAUTION: TO REDUCE THE RISK OF ELECTRIC SHOCK DO NOT REMOVE COVER (OR BACK) NO USER-SERVICEABLE PARTS INSIDE. REFER SERVICING TO QUALIFIED SERVICE PERSONNEL.

This lightning flash with arrowhead symbol within an equilateral triangle is intended to alert the user to the presence of uninsulated dangerous voltage within the product's enclosure that may be of sufficient magnitude to constitute a risk of electric shock to persons.

The exclamation point within an equilateral triangle is intended to alert the user to the presence of important operating and maintenance (servicing) instructions in the literature accompanying the product.

WARNING: TO PREVENT FIRE OR ELECTRIC SHOCK HAZARD, DO NOT EXPOSE THIS PRODUCT TO RAIN OR MOISTURE.

WARNING: Do not install this equipment in a confined space such as a book case or similar unit.

CAUTION: The apparatus shall not be exposed to water (dripping or splashing) and no objects filled with liquids, such as vases, shall be placed on the apparatus.

CAUTION: Do not use high voltage products around this product. (ex. Electrical swatter) This product may malfunction due to electrical shock.

CAUTION: Do not block any ventilation openings. Install in accordance with the manufacturer's instructions. Slots and openings in the cabinet are provided for ventilation and to ensure reliable operation of the product and to protect it from over heating. The openings shall be never be blocked by placing the product on a bed, sofa, rug or other similar surface. This product shall not be placed in a built-in installation such as a bookcase or rack unless proper ventilation is provided or the manufacturer's instruction has been adhered to.



CAUTION: This product employs a Laser System. To ensure proper use of this product, please read this owner's manual carefully and retain it for future reference. Shall the unit require maintenance, contact an authorized service center. Use of controls, adjustments or the performance of procedures other than those specified herein may result in hazardous radiation exposure. To prevent direct exposure to laser beam, do not try to open the enclosure.

CAUTION concerning the Power cord

The Power Plug is the disconnecting device. In case of an emergency, the Power Plug must remain readily accessible.

This device is equipped with a portable battery or accumulator.

Safety way to remove the battery or the battery from the equipment: Remove the old battery or battery pack, follow the steps in reverse order than the assembly. To prevent contamination of the environment and bring on possible threat to human and animal health, the old battery or the battery put it in the appropriate container at designated collection points. Do not dispose of batteries or battery together with other waste. It is recommended that you use local, free reimbursement systems batteries and accumulators. The battery shall not be exposed to excessive heat such as sunshine, fire or the like.

RF Radiation Exposure Statement

This equipment should be installed and operated with minimum distance 20 cm between the radiator and your body.

- The appliance is not intended for use by young children or infirm persons without supervision.
- Young Children should be supervised to ensure that they do not play with appliance.
- If the appliance is supplied from a cord extension set or an electrical portable outlet device, the cord extension set or electrical portable outlet device must be positioned so that it is not subject to splashing or ingress of moisture.