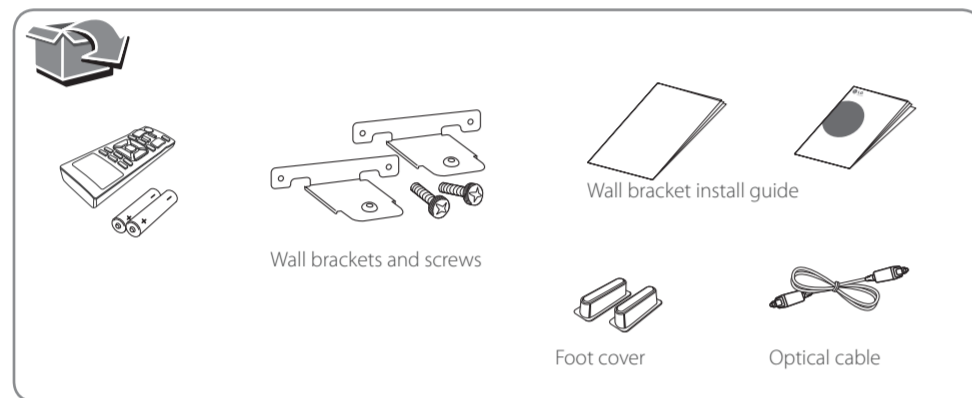


# 2.1 ch Sound Bar

Model : LAS350B

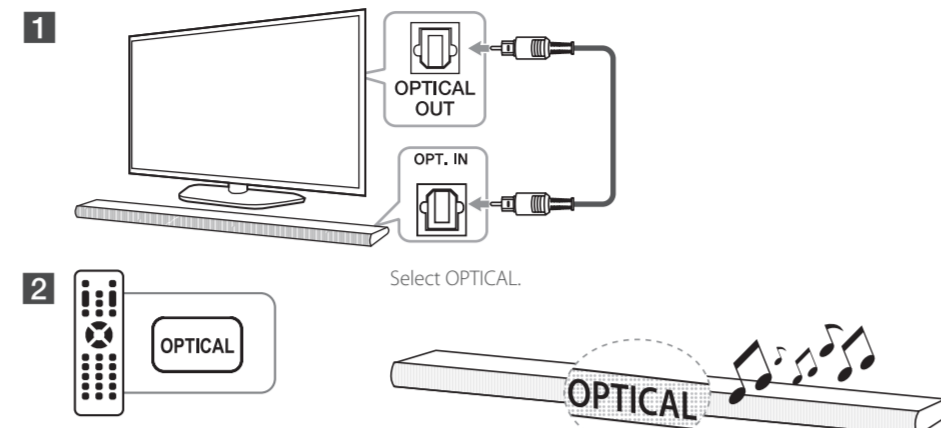
## ENGLISH | SIMPLE MANUAL (1 of 2)

To view the instructions of advanced features, visit <http://www.lg.com> and then download Owner's Manual. Some of the content in this manual may differ from your unit.

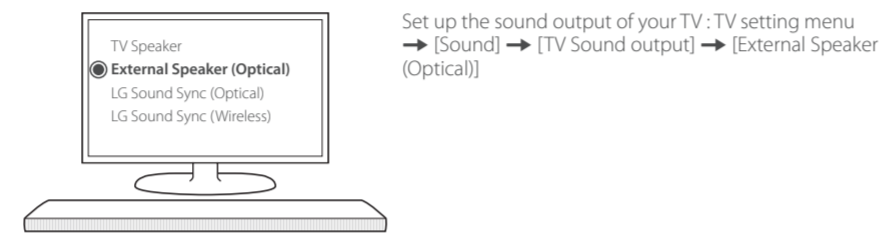


www.lg.com  
Printed in China

## Optical operation



Some TVs may need to change their sound output settings. Refer to the description below.



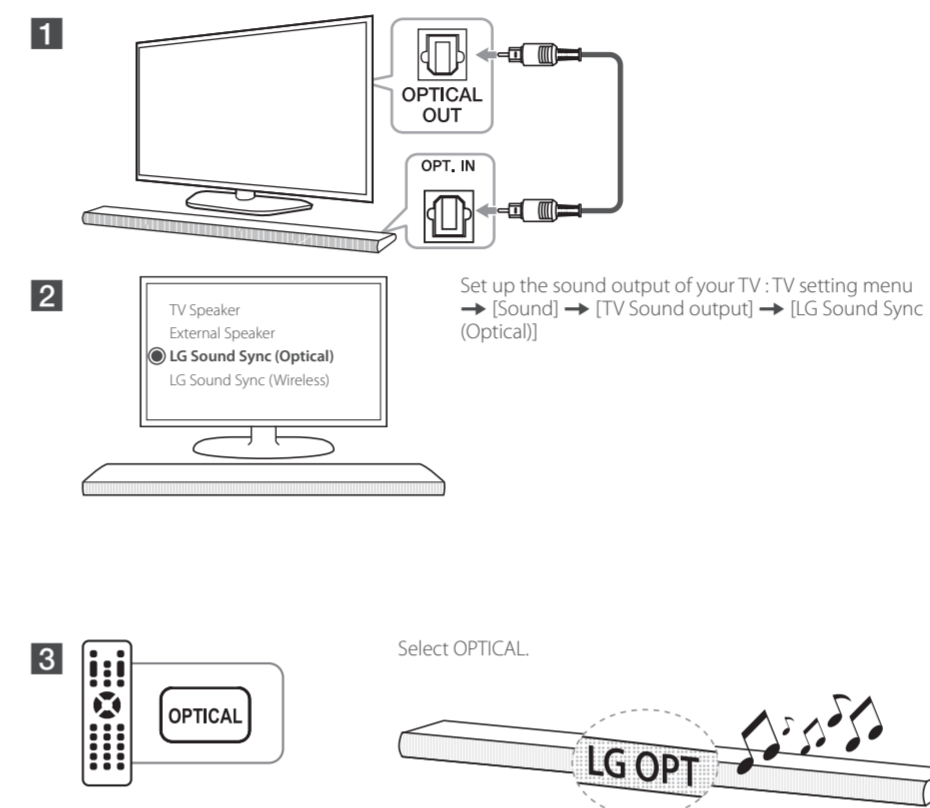
Set up the sound output of your TV: TV setting menu → [Sound] → [TV Sound output] → [External Speaker (Optical)]

Details of TV setting menu vary depending on the manufacturers or models of your TV.

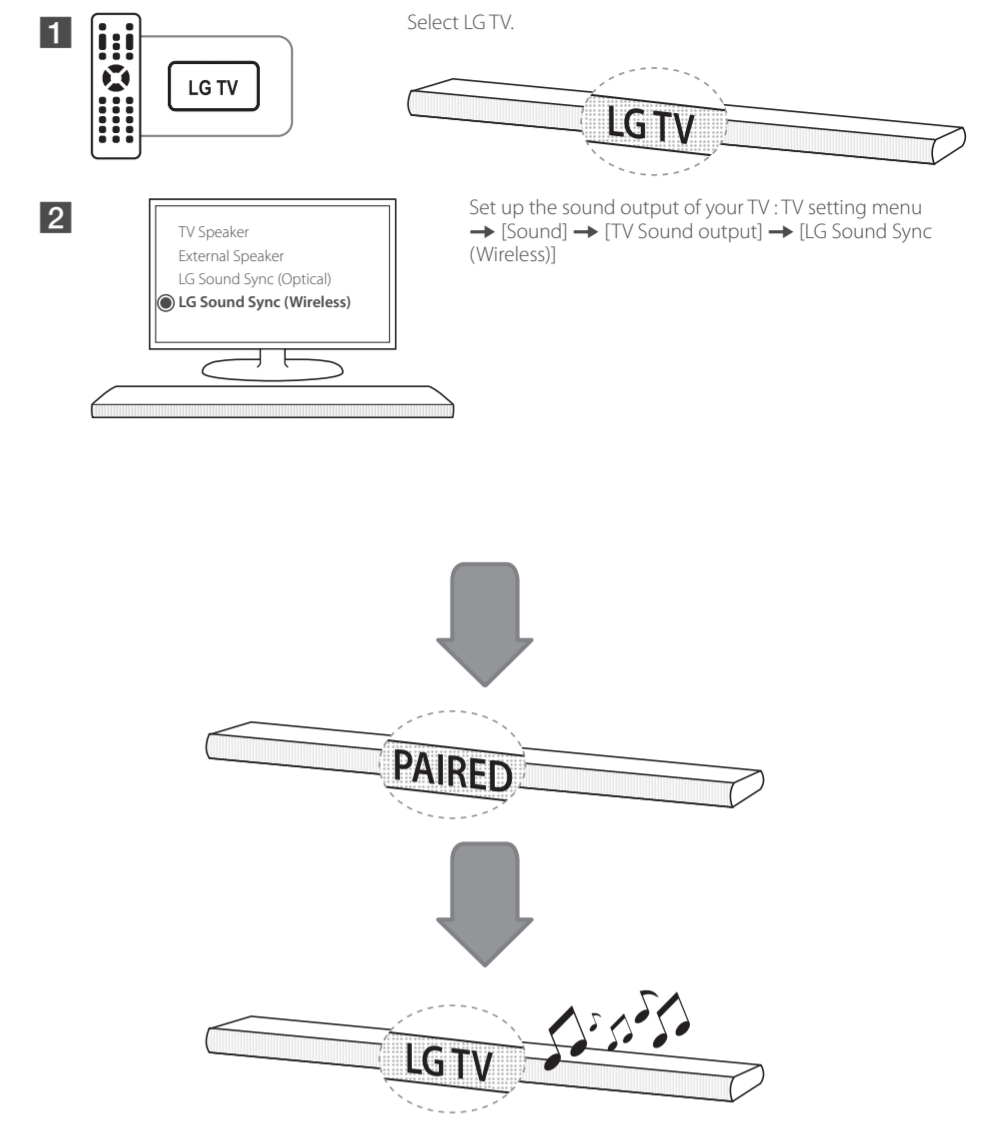
## LG Sound Sync

LG Sound Sync enables you to control some functions of this unit by the remote control of your LG TV. Controllable functions are volume up/down and mute. Make sure that your TV has LG Sound Sync logo as shown above.

### Optical

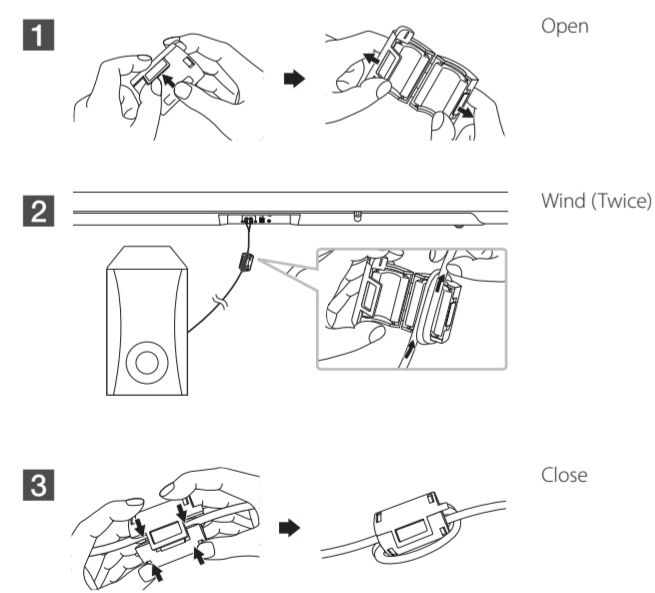


### Wireless

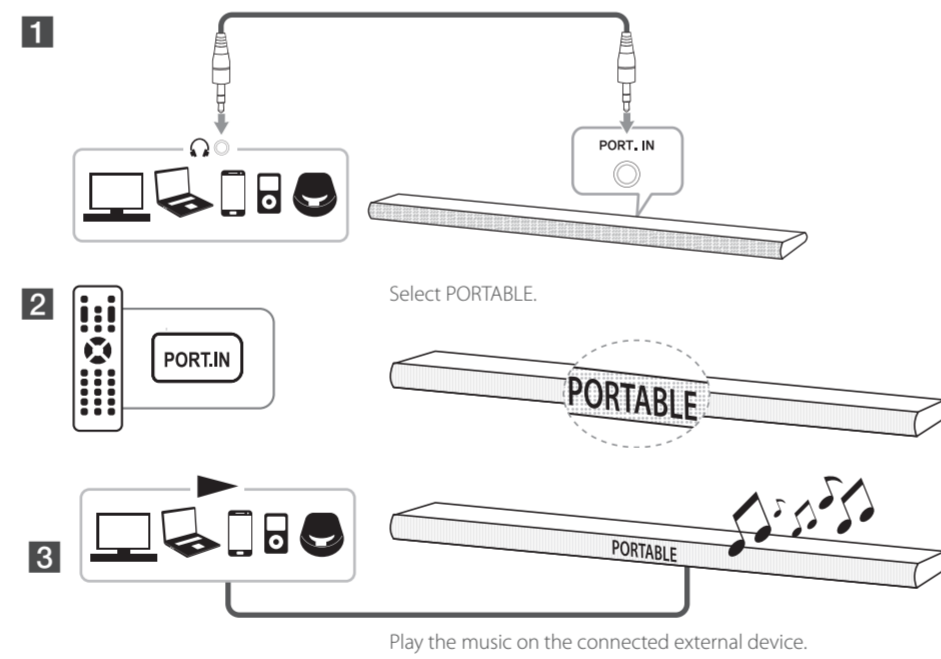


## How to affix the Ferrite Core (Optional)

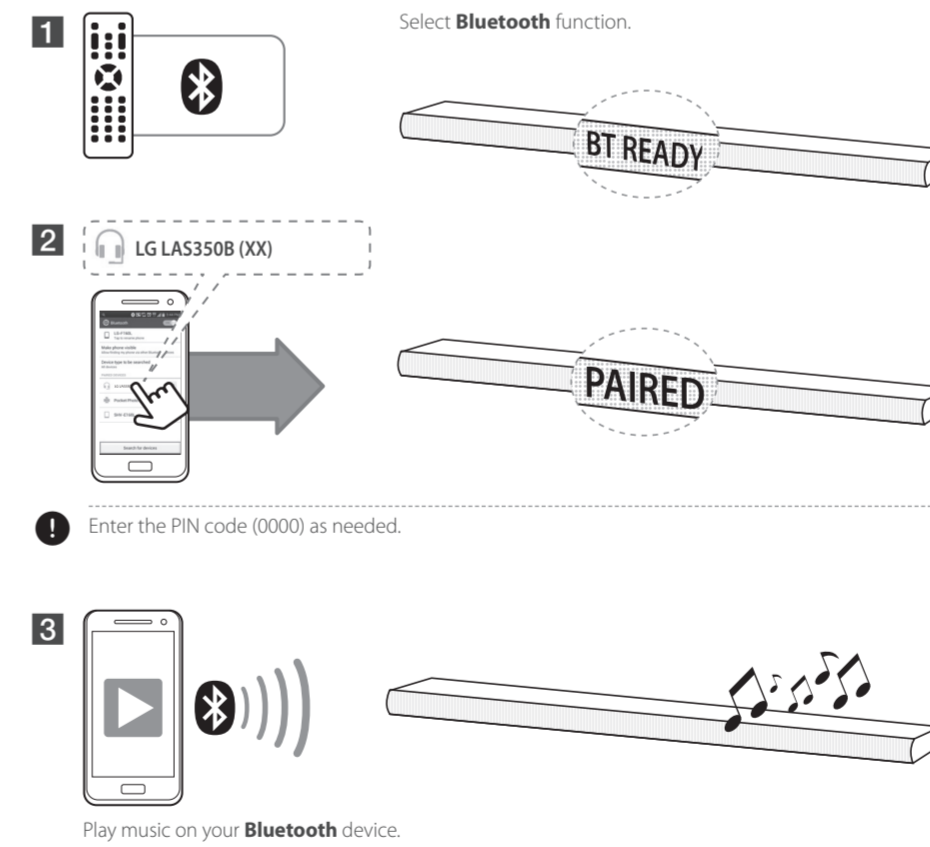
You may need to attach Ferrite core in order to reduce or eliminate any electrical interference.



## Using External device



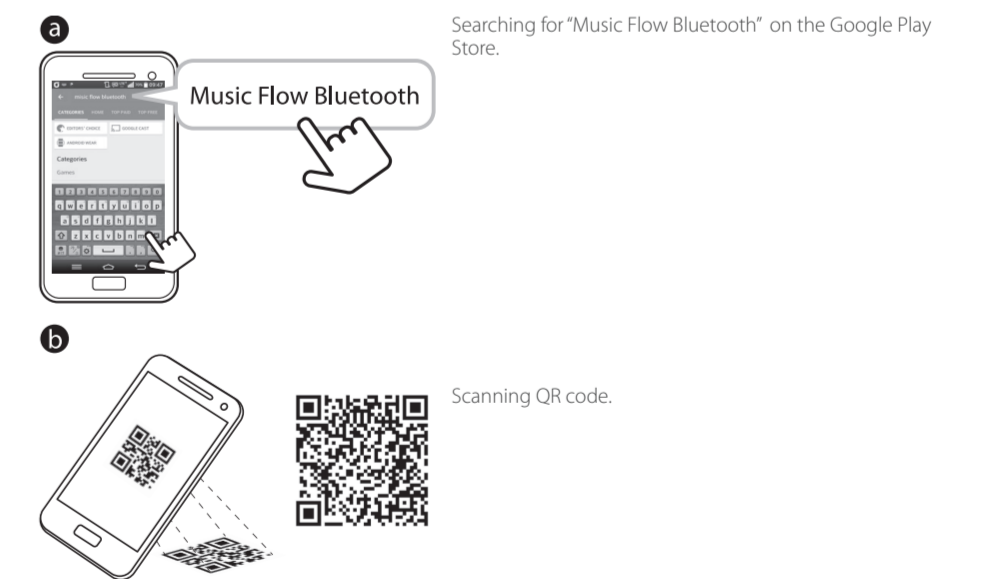
## Using BLUETOOTH®



This unit can connect up to 3 Bluetooth devices when you use the Bluetooth mode. However, music playback is possible from only one of connected device.

## Using "Music Flow Bluetooth" App

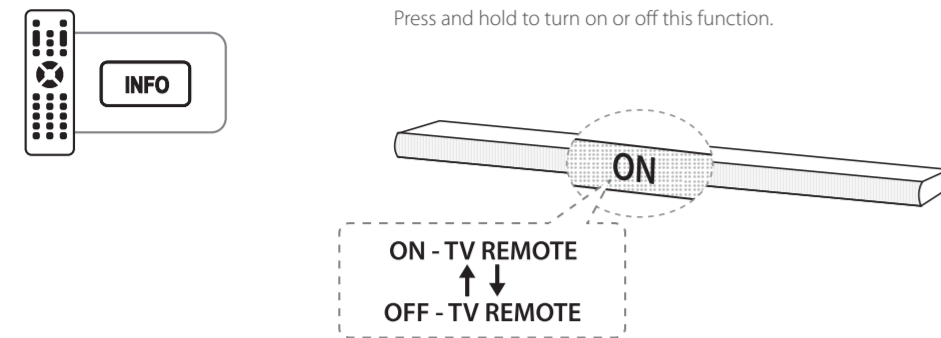
To use this unit more comfortably, install "Music Flow Bluetooth" on your Bluetooth devices. Select a way of installation (a or b).





## Using your TV remote control

You can control some functions of this unit by your TV remote control even when using other company's product. Controllable functions are volume up/down and mute.



Supported TV brands

LG	Panasonic	Philips	Samsung	Sharp	Sony	Toshiba	Vizio
----	-----------	---------	---------	-------	------	---------	-------

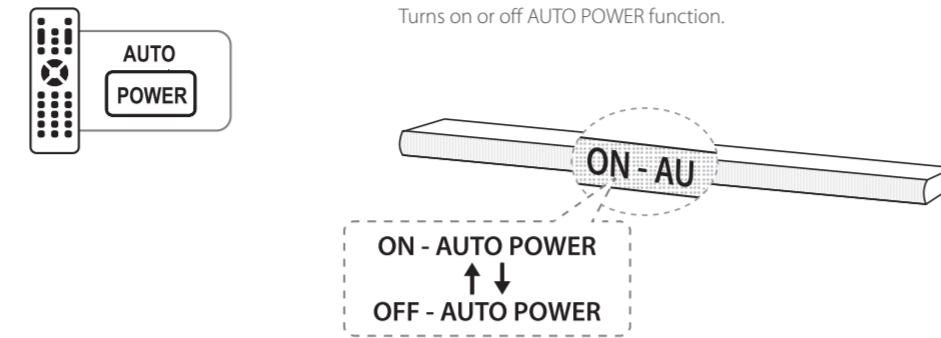
Make sure that the sound output of your TV is set to [External speaker].

Depending on the remote control, this function may not work well.

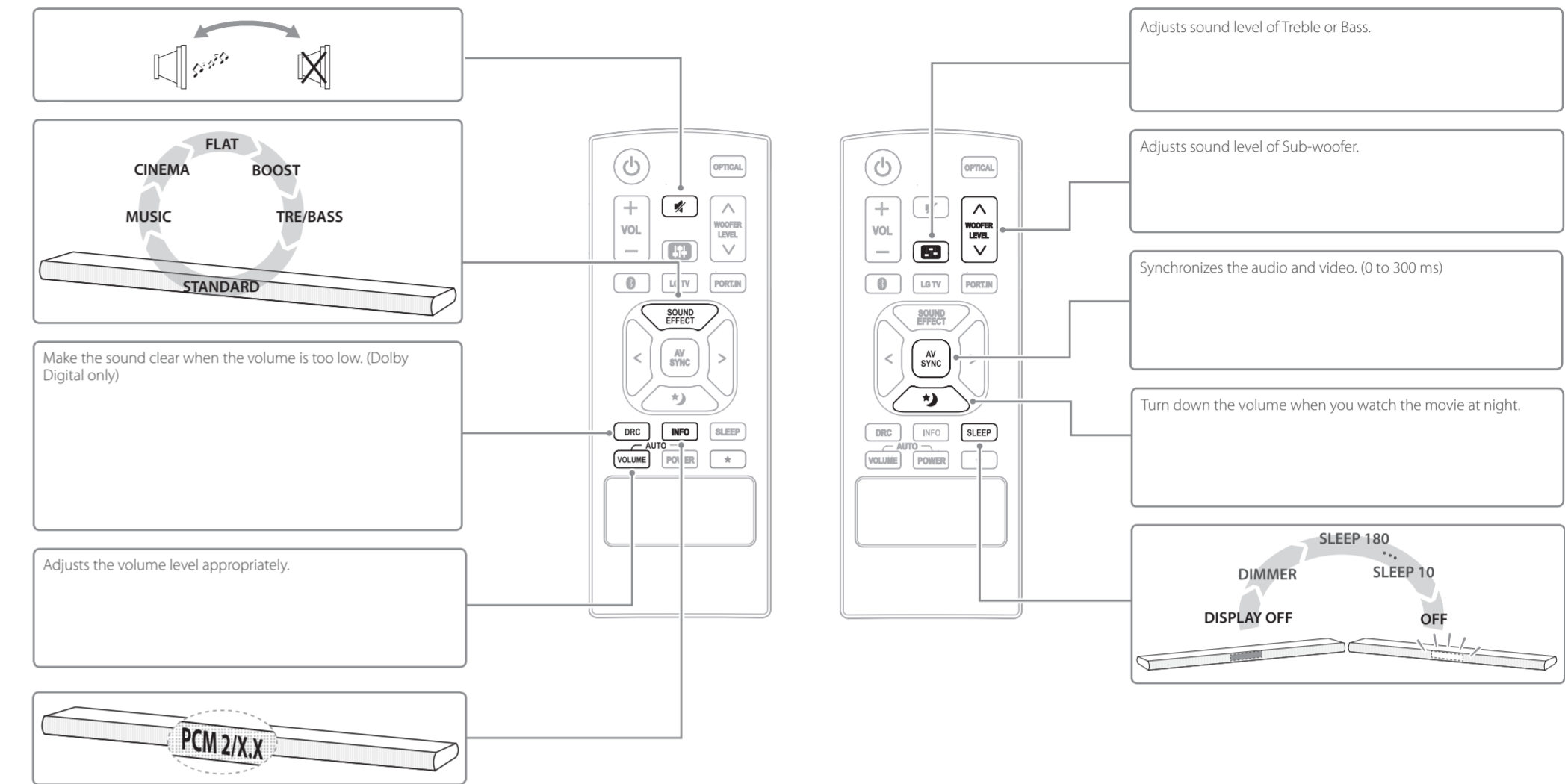


## Auto power On/Off

This unit automatically turns on by an input source : Optical, LG TV or **Bluetooth**.



## Additional Feature

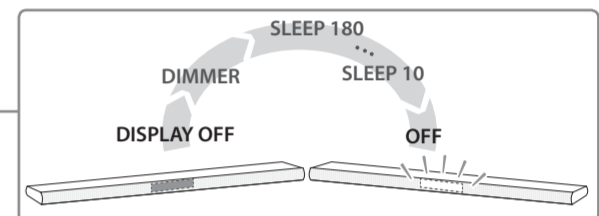


Adjusts sound level of Treble or Bass.

Adjusts sound level of Sub-woofer.

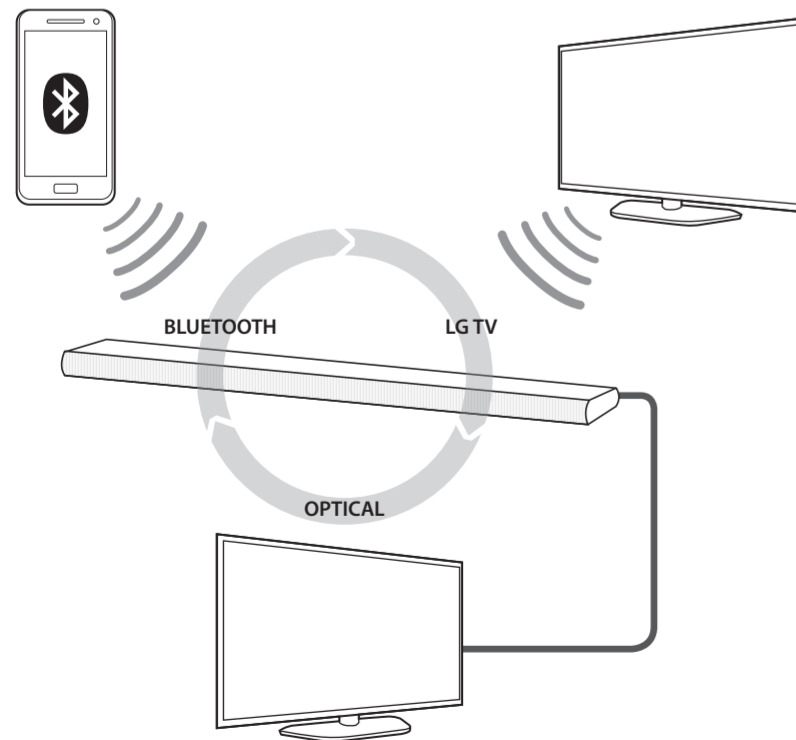
Synchronizes the audio and video. (0 to 300 ms)

Turn down the volume when you watch the movie at night.

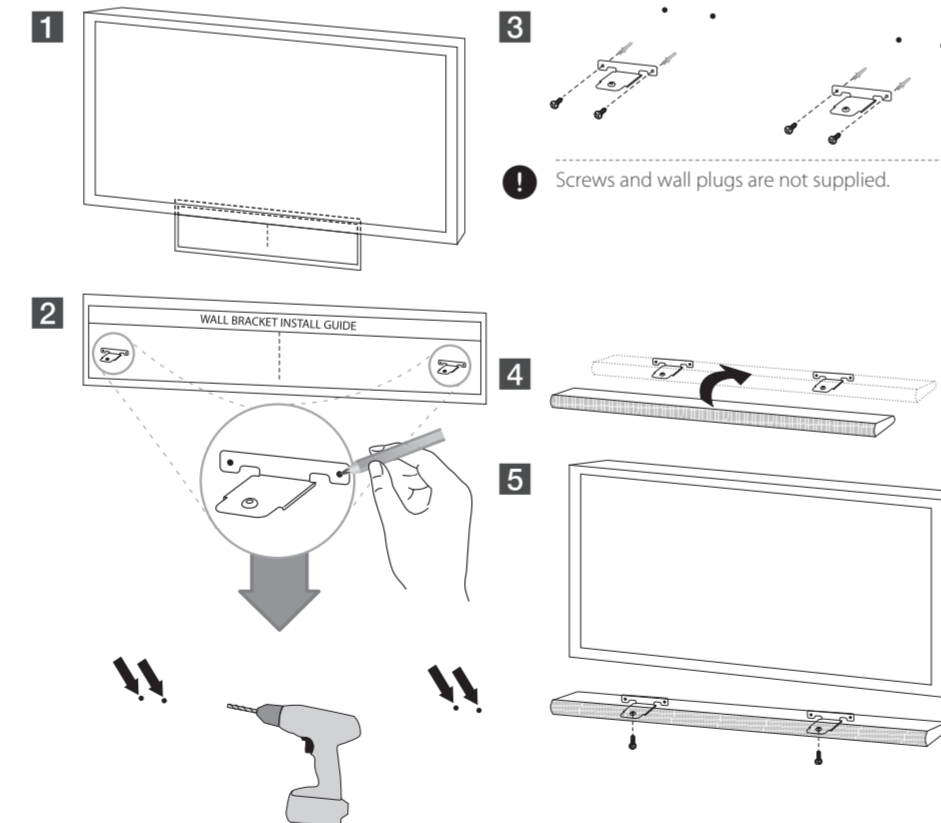


## Auto Function Change

This unit recognizes input signals such as optical, **Bluetooth** and LG TV and then switches to the suitable function automatically.



## Installation



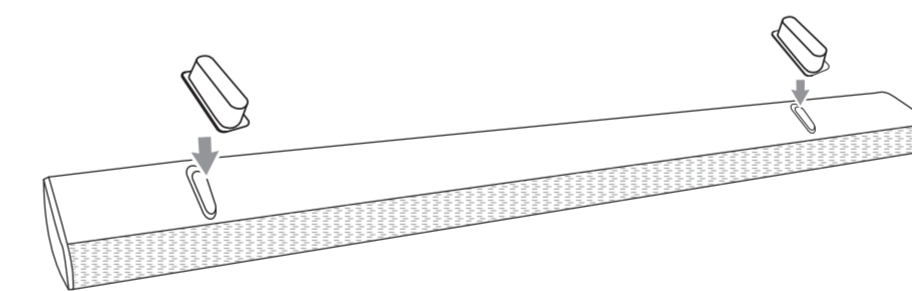
If your TV is not a wall-mountable, you do not have to use wall brackets. Just put the unit in front of your TV.

Do not install this unit on Metallic furniture.



## Installing foot cover

You can adjust the height of the unit by using the foot cover. (Foot height : 11/16 inch (17 mm))



## Additional Information

Bluetooth	Codec	SBC
-----------	-------	-----



## Specification

<b>ENGLISH</b>	
Power requirements	120V ~ 60 Hz
Power consumption	21 W
Amplifier Total output	120 W

NOTICE: For Product Identification and Compliance/Safety labeling information please refer to Main Label on the bottom of Unit. Design and specifications are subject to change without notice.

# 2.1 ch Sound Bar

Model : LAS350B

## ENGLISH | SIMPLE MANUAL (2 of 2)

To view the instructions of advanced features, visit <http://www.lg.com> and then download Owner's Manual. Some of the content in this manual may differ from your unit.



MFL68742365

[www.lg.com](http://www.lg.com)  
Printed in China



**CAUTION:** TO REDUCE THE RISK OF ELECTRIC SHOCK DO NOT REMOVE COVER (OR BACK) NO USER-SERVICEABLE PARTS INSIDE REFER SERVICING TO QUALIFIED SERVICE PERSONNEL.



This lightning flash with arrowhead symbol within an equilateral triangle is intended to alert the user to the presence of uninsulated dangerous voltage within the product's enclosure that may be of sufficient magnitude to constitute a risk of electric shock to persons.



The exclamation point within an equilateral triangle is intended to alert the user to the presence of important operating and maintenance (servicing) instructions in the literature accompanying the product.

**WARNING:** This product contains chemicals known to the State of California to cause cancer and birth defects or other reproductive harm. **Wash hands after handling.**

**WARNING:** TO PREVENT FIRE OR ELECTRIC SHOCK HAZARD, DO NOT EXPOSE THIS PRODUCT TO RAIN OR MOISTURE.

**CAUTION:** The apparatus shall not be exposed to water (dripping or splashing) and no objects filled with liquids, such as vases, shall be placed on the apparatus.

**WARNING:** Do not install this equipment in a confined space such as a book case or similar unit.

**CAUTION:** Do not use high voltage products around this product. (ex. Electrical swatter) This product may malfunction due to electrical shock.

**CAUTION:** Do not block any ventilation openings. Install in accordance with the manufacturer's instructions. Slots and openings in the cabinet are provided for ventilation and to ensure reliable operation of the product and to protect it from over heating. The openings shall be never be blocked by placing the product on a bed, sofa, rug or other similar surface. This product shall not be placed in a built-in installation such as a bookcase or rack unless proper ventilation is provided or the manufacturer's instruction has been adhered to.

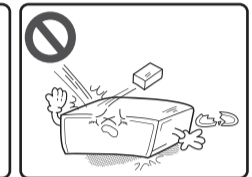
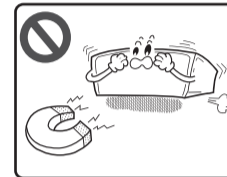
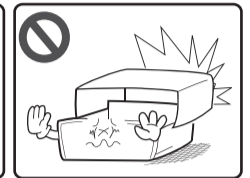
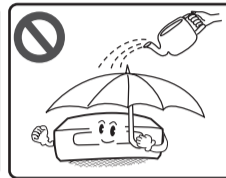
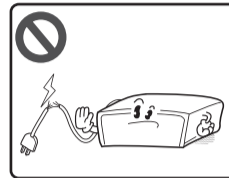
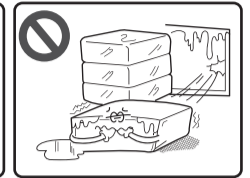
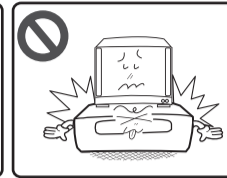
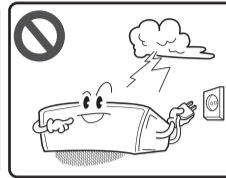
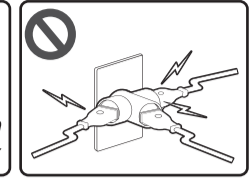
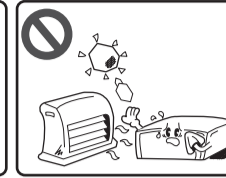
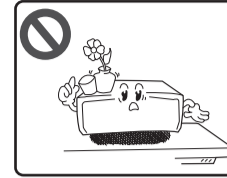
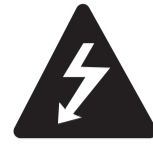
### LG Customer Information Center

1-800-243-0000 USA, Consumer  
1-888-865-3026 USA, Commercial

Register your product Online!

[www.lg.com](http://www.lg.com)

## Safety Information



## IMPORTANT SAFETY INSTRUCTIONS

1. Read these instructions.
2. Keep these instructions.
3. Heed all warnings.
4. Follow all instructions.
5. Do not use this apparatus near water.
6. Clean only with dry cloth.
7. Do not block any ventilation openings. Install in accordance with the manufacturer's instructions.
8. Do not install near any heat sources such as radiators, heat registers, stoves, or other apparatus (including amplifiers) that produce heat.
9. Do not defeat the safety purpose of the polarized or grounding-type plug. A polarized plug has two blades with one wider than the other. A grounding type plug has two blades and a third grounding prong. The wide blade or the third prong are provided for your safety. If the provided plug does not fit into your outlet, consult an electrician for replacement of the obsolete outlet.
10. Protect the power cord from being walked on or pinched particularly at plugs, convenience receptacles, and the point where they exit from the apparatus.
11. Only use attachments/accessories specified by the manufacturer.
12. Use only with the cart, stand, tripod, bracket, or table specified by the manufacturer, or sold with the apparatus. When a cart is used, use caution when moving the cart/apparatus combination to avoid injury from tip-over.
13. Unplug this apparatus during lightning storms or when unused for long periods of time.
14. Refer all servicing to qualified service personnel. Servicing is required when the apparatus has been damaged in any way, such as power-supply cord or plug is damaged, liquid has been spilled or objects have fallen into the apparatus, the apparatus has been exposed to rain or moisture, does not operate normally, or has been dropped.



### FCC Compliance Statement

This device complies with part 15 of the FCC rules. Operation is subject to the following two conditions:

- (1) This device may not cause harmful interference, and
- (2) This device must accept any interference received, including interference that may cause undesired operation.

**NOTE:** This equipment has been tested and found to comply with the limits for a Class B digital device, pursuant to Part 15 of the FCC Rules. These limits are designed to provide reasonable protection against harmful interference in a residential installation. This equipment generates, uses, and can radiate radio frequency energy and, if not installed and used in accordance with the instructions, may cause harmful interference to radio communications. However, there is no guarantee that interference will not occur in a particular installation.

If this equipment does cause harmful interference to radio or television reception, which can be determined by turning the equipment off and on, the user is encouraged to try to correct the interference by one or more of the following measures:

- Reorient or relocate the receiving antenna.
- Increase the separation between the equipment and receiver.
- Connect the equipment into an outlet on a circuit different from that to which the receiver is connected.
- Consult the dealer or an experienced radio/TV technician for help.

**CAUTION :** Any changes or modifications not expressly approved by the party responsible for compliance could void the user's authority to operate this equipment.

**FCC WARNING:** This equipment may generate or use radio frequency energy. changes or modifications to this equipment may cause harmful interference unless the modifications are expressly approved in the instruction manual. The user could lose the authority to operate this equipment if an unauthorized change or modification is made.

**FCC RF Radiation Exposure Statement :** This equipment complies with FCC radiation exposure limits set forth for an uncontrolled environment. This equipment should be installed and operated with minimum distance 20 cm between the radiator and your body. End users must follow the specific operating instructions for satisfying RF exposure compliance. This transmitter must not be co-located or operating in conjunction with any other antenna or transmitter.

**CAUTION:** Regulations of the FCC and FAA prohibit airborne operation of radio-frequency wireless devices because their signals could interfere with critical aircraft instruments.

### Responsible Party :

LG Electronics USA, Inc. 1000 Sylvan Avenue Englewood Cliffs, NJ 07632  
TEL. : +1-800-243-0000

## NOTICE for using this Unit

### LG Sound Sync

- For specific information of operating, refer to the instruction manual of your TV.
- When the connections failed, make sure of the conditions of this unit and your TV : power, function and cable connection.
- The amount of time to turn off this unit is different depending on your TV when you set AUTO POWER function to ON.

### Auto power On/Off

- Depending on the connected device, this function may not operate.
- If you turned off the unit directly, it cannot be turned on automatically by AUTO POWER function. However the unit can be turned on by AUTO POWER function when optical signal comes in after 5 seconds of no signal.
- After the unit is turned on by AUTO POWER function, it will be automatically turned off if there is no signal for a certain period of time from the TV connected by LG Sound Sync (Optical/Wireless).

### Auto Function Change

- When Auto Function Change does not work properly, turn off the external device and then turn on the device after 5 seconds.

### Using Bluetooth®

- Sound quality may become lower or disconnected depending on the distance, interference or obstacles.
- Depending on the type of the device, you may not be able to use the **Bluetooth** function.
- The multi pairing connection is only supported on Android or iOS devices. (Multi pairing connection may not be supported depending on the connected device specifications.)
- Removable/detachable **Bluetooth** device (Ex : Dongle etc..) doesn't support multi pairing.

### Using "Music Flow Bluetooth" App

- Android O/S : Ver 4.0.3 (or later)
- If you want to get more information to operate, tap [Setting] and turn on the User guide.

