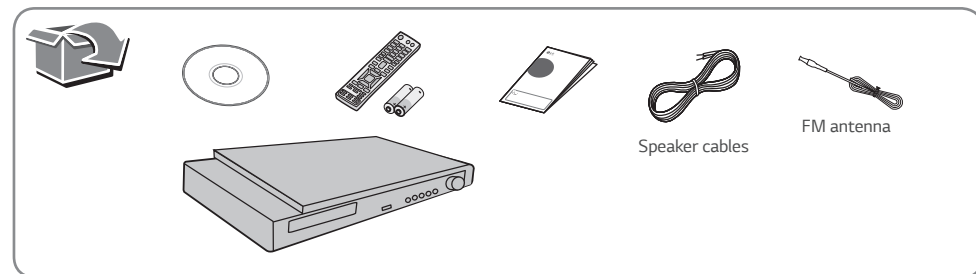


3D Blu-ray™ / DVD Home Cinema System  
LHB725

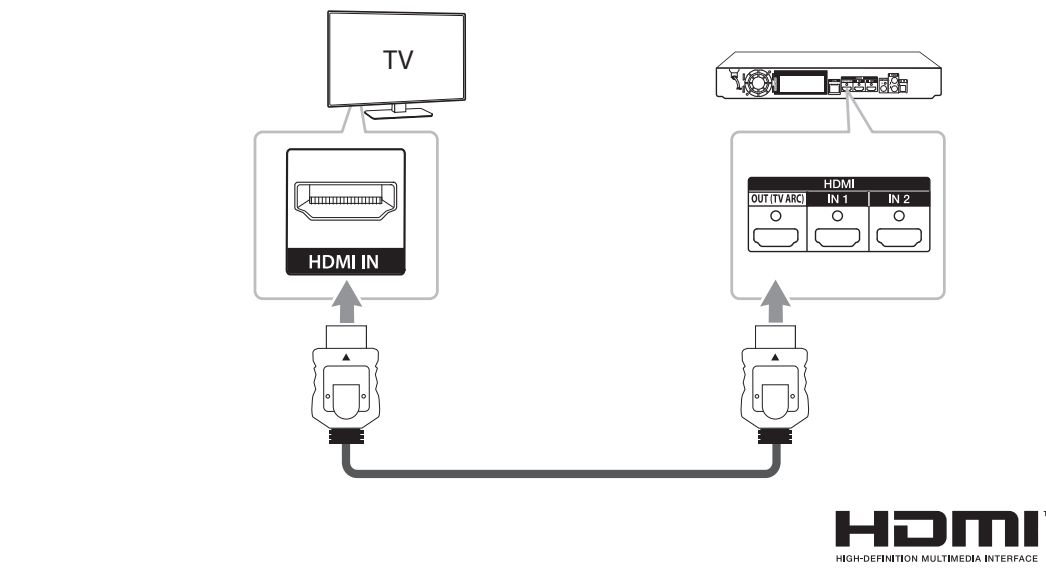
**SIMPLE MANUAL**

To view the instructions of advanced features, visit <http://www.lg.com> and then download Owner's Manual. Some of the content in this manual may differ from your unit.

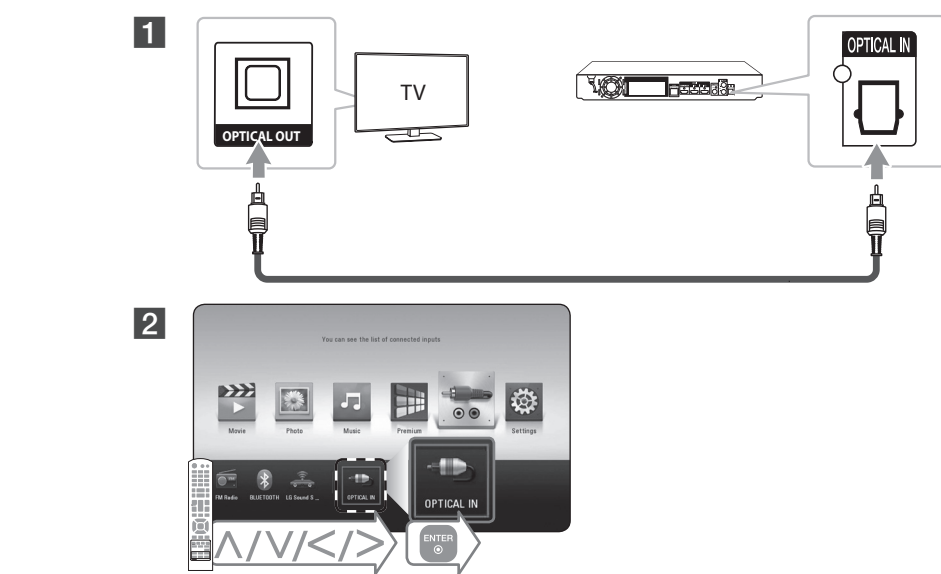


[www.lg.com](http://www.lg.com)

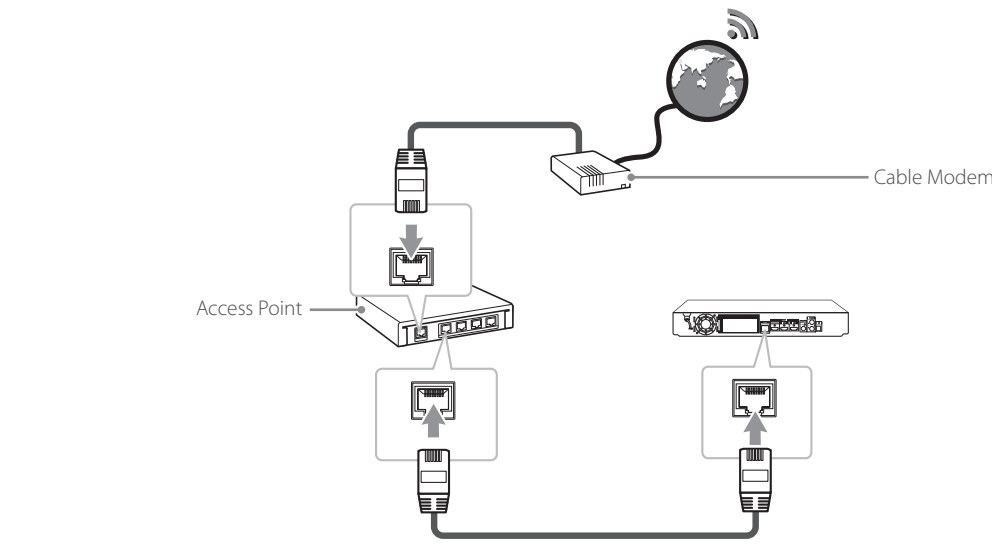
**TV Connection (HDMI OUT)**



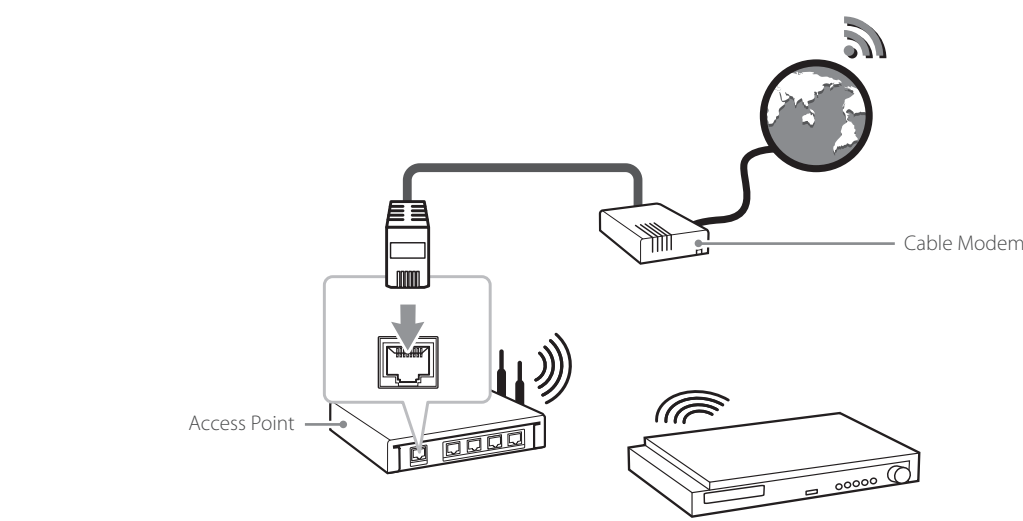
**TV Connection (OPTICAL IN)**



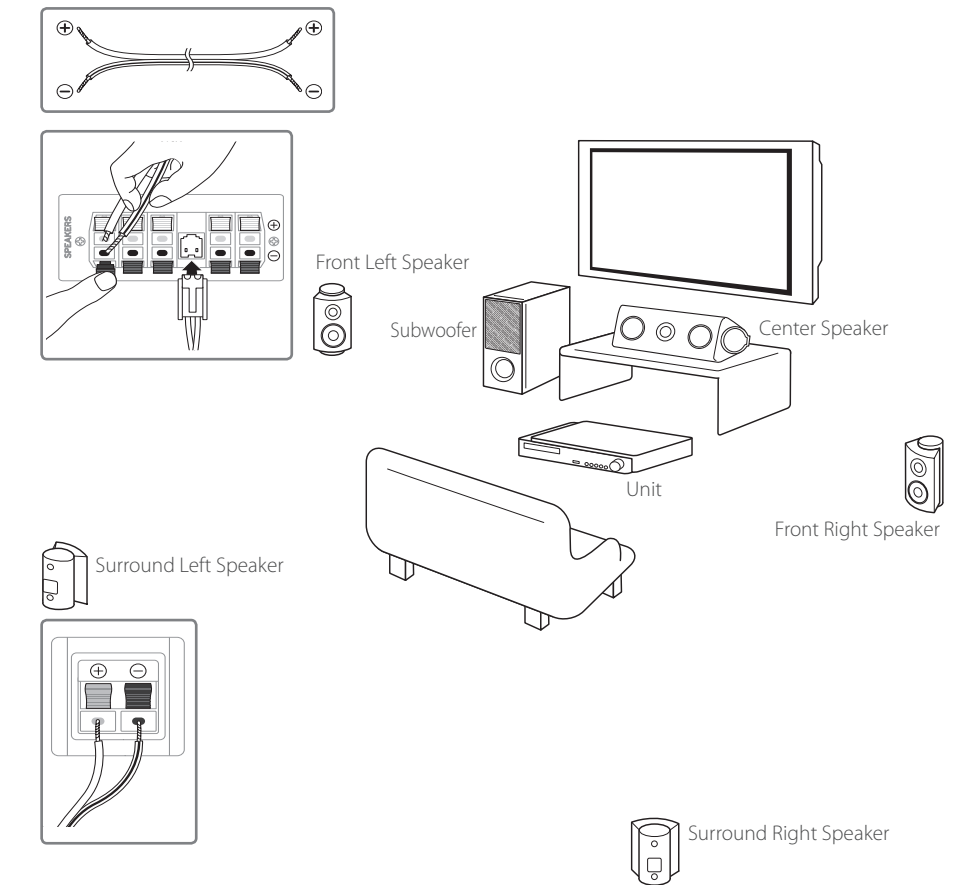
**Wired Network Connection**



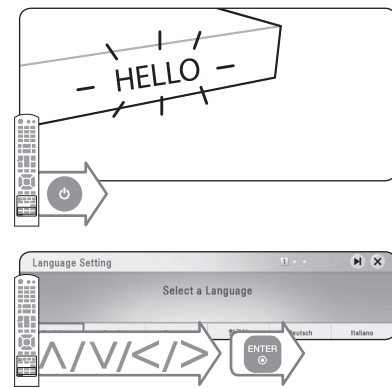
**Wireless Network Connection**



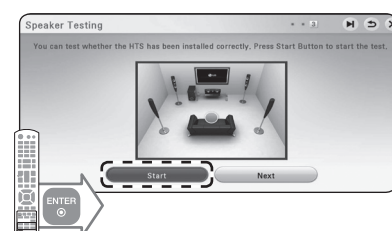
**Speaker Connection**



**Initial Setup**



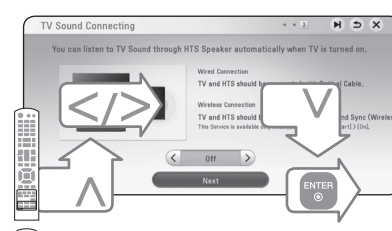
Follow the directions for the initial setup displayed on the screen.



Start the speaker test.

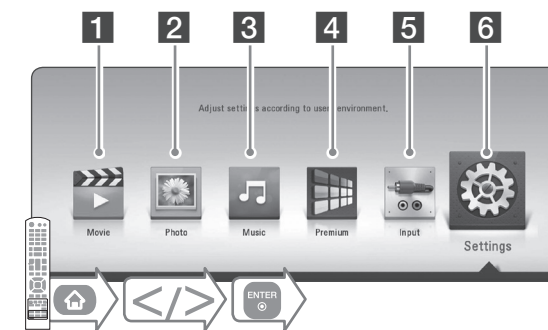


Stop the speaker test and select [Next].



Setup [TV Sound Connecting] and select [Next].

**Using HOME menu**



**1** Plays video content.

**2** Plays photo content.

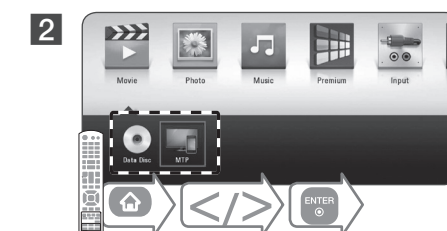
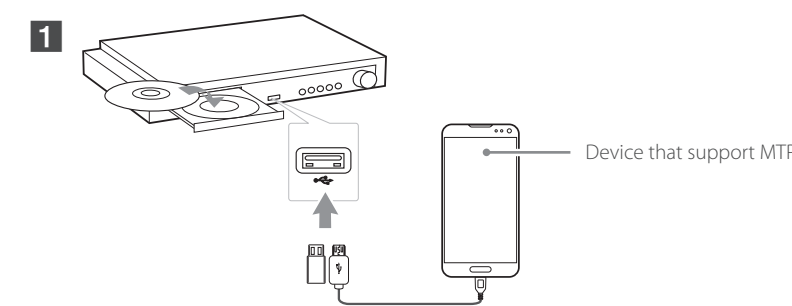
**3** Plays audio content.

**4** Displays the Premium Home screen.

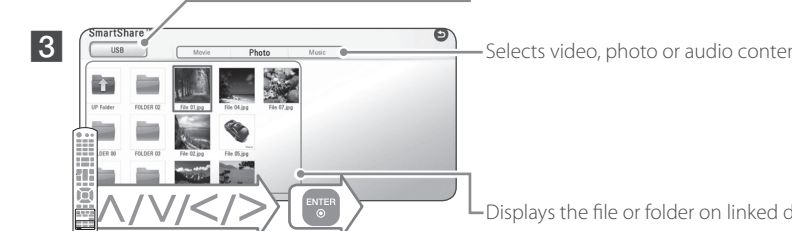
**5** Changes input mode.

**6** Adjusts the system settings.

**Disc, Data Playback**



Displays all linked devices.



Selects video, photo or audio content.

Displays the file or folder on linked device.

For the most Audio CD, BD-ROM and DVD-ROM discs, playback starts automatically.

**Network Playback**

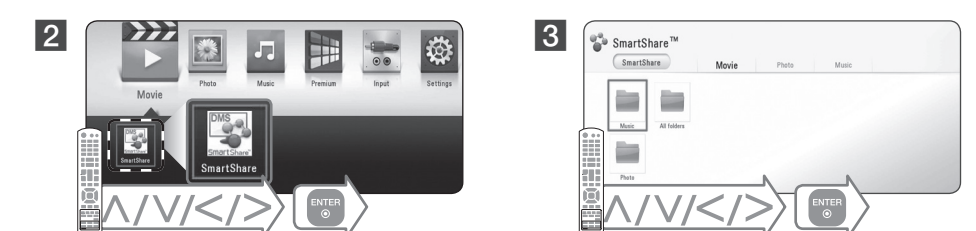
**SmartShare PC software Installation (DLNA)**

**1** Install SmartShare PC software.

**2** Run the program, and set the share folder you want.

**SmartShare Network Playback (DLNA)**

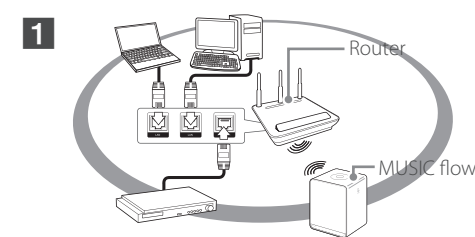
**1** Check the network connection and settings.





## Enjoying with LG Multi-room Audio (LG Music Flow)

LG smart Hi-Fi audio system MUSIC flow allows you to enjoy music with several speakers wirelessly.



1 Check the network connection and settings.



2 During playback, press green (G) colored button -> Select speakers to play -> Select [OK].

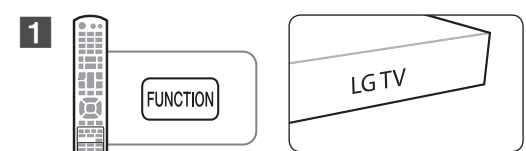
- If you use this unit with MUSIC flow, at least one unit should be connected by LAN cable. For more detail for use with MUSIC flow, refer to the MUSIC flow's user manual.
- It is recommended to connect up to 4 speakers for smooth playback.
- When you perform private sound mode, this function is unavailable.
- This function is available for only audio contents.



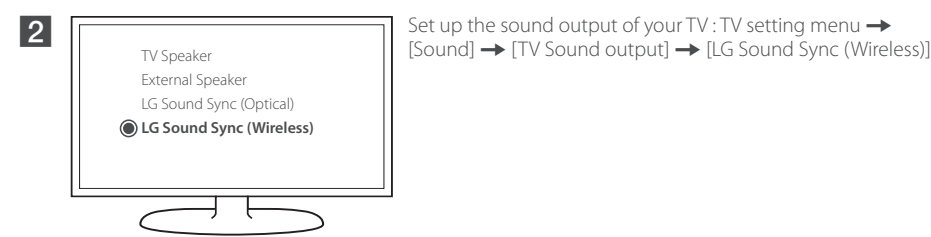
## LG Sound Sync



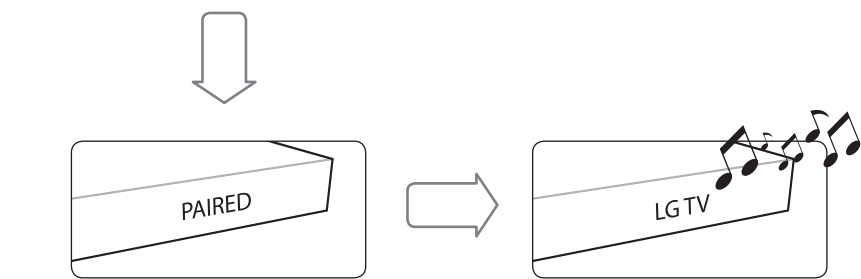
LG Sound Sync enables you to control some functions of this unit by a remote control of your LG TV. Controllable functions are volume up/down and mute. Make sure that your TV has LG Sound Sync logo as shown above.



1 Select LG TV.



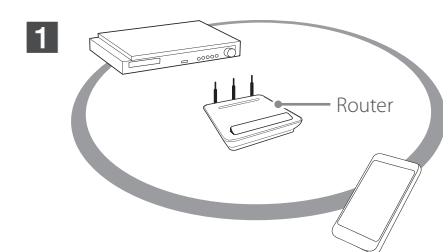
2 Set up the sound output of your TV: TV setting menu -> [Sound] -> [TV Sound output] -> [LG Sound Sync (Wireless)]



1 Details of TV setting menu vary depending on the models of your TV.



## Enjoying Private Sound



Make sure that mobile device is connected to the same Wi-Fi network as this player.

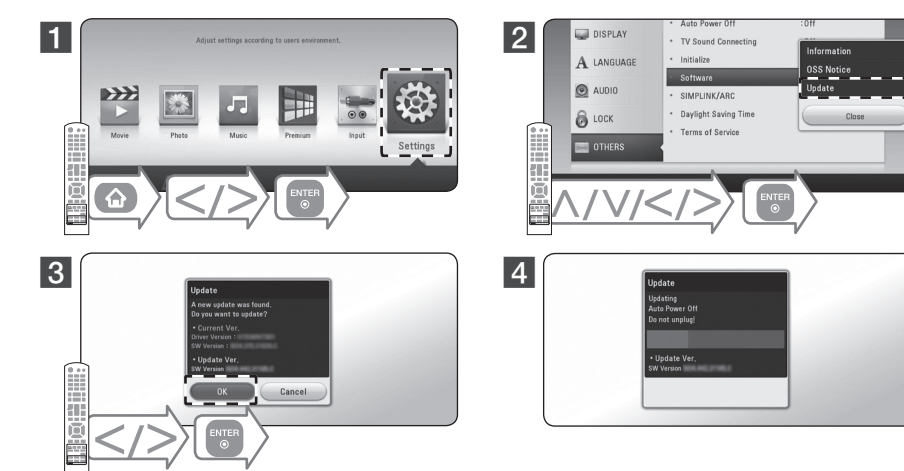
2 Turn on the mobile device LG AV Remote App is installed and run LG AV Remote App.



- Not all modes support sound privacy and pairing multiple devices is not available.
- When you use the unit with MUSIC flow, private sound mode is unavailable.



## Software Update



1 Before updating software, the unit should be connected to your home network.



## Additional Information

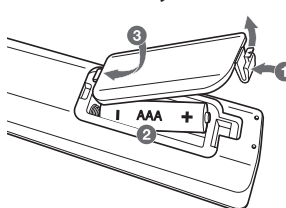
### Customer Support

You can update the Player using the latest software to enhance the products operation and/or add new features. To obtain the latest software for this player (if updates have been made), proceed the software updates as written or visit <http://www.lg.com> or contact LG Electronics customer care center.

### How to disconnect the wireless network connection or the wireless device

Turn off the unit.

### Replacement of battery



### OPEN SOURCE SOFTWARE NOTICE

To obtain the source code under GPL, LGPL, MPL and other open source licenses, that is contained in this product, please visit <http://opensource.lge.com>. In addition to the source code, all referred license terms, warranty disclaimers and copyright notices are available for download. LG Electronics will also provide open source code to you on CD-ROM for a charge covering the cost of performing such distribution (such as the cost of media, shipping and handling) upon email request to [opensource@lge.com](mailto:opensource@lge.com). This offer is valid for three (3) years from the date on which you purchased the product.



## Specification

Power requirements	Refer to main label on the bottom panel.
Power consumption	Refer to main label on the bottom panel. Networked standby : 0.5 W (if all network ports are activated.)
Dimensions (W x H x D)	Approx. 410 mm x 55 mm X 260 mm
Net Weight (Approx.)	2.7 kg
Bus Power Supply (USB)	5 V $\equiv$ 500 mA

Design and specifications are subject to change without notice.

**POWER:** This unit operates on a mains supply of 200-240V~, 50/60Hz.

**Wiring:** This unit is supplied with a BS 1363 approved main plug. When replacing the fuse, always use of the same rating approved to BS 1362. Never use this plug with the fuse cover omitted. To obtain a replacement fuse cover

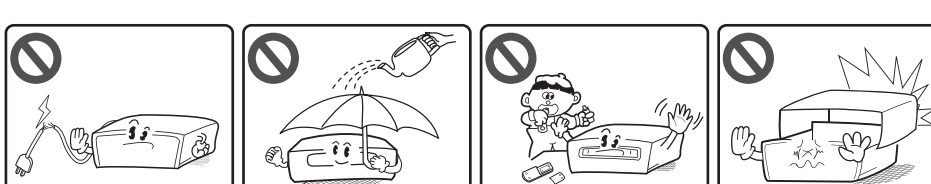
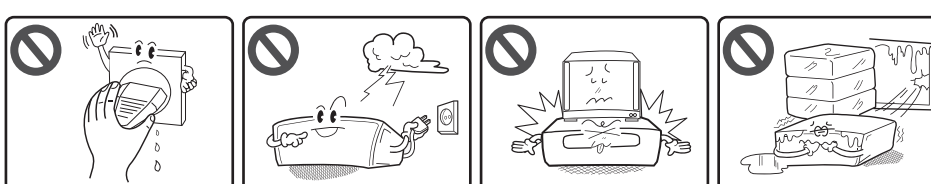
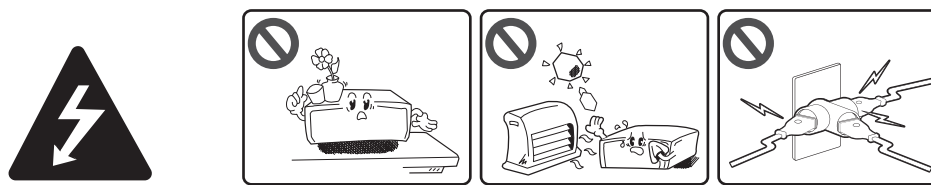
contact your dealer. If the type of plug supplied is not suitable for the mains sockets in your home, then the plug should be removed and a suitable type fitted. Please refer to the wiring instructions below:

**Warning:** A mains plug removed from the mains lead of this unit must be destroyed. A mains plug with bared wires is hazardous if inserted in a mains socket. Do not connect either wire to the earth pin, marked with the letter E or with the earth symbol  $\perp$  or coloured green or green and yellow. If any other plug is fitted, use same rating of fuse in the plug.

**Important:** The wires in this mains lead are coloured in accordance with the following codes:  
**- BLUE: NEUTRAL, BROWN: LIVE** - As the colours of the wires in the mains lead of this unit may not correspond with the coloured marking identifying the terminals in your plug, proceed as follows: The wire which is coloured blue must be connected to the terminal which is marked with the letter N or coloured black. The wire which is coloured brown must be connected to the terminal which is marked with the letter L or coloured red.



## Safety Information



**CAUTION:** TO REDUCE THE RISK OF ELECTRIC SHOCK DO NOT REMOVE COVER (OR BACK) NO USER-SERVICEABLE PARTS INSIDE REFER SERVICING TO QUALIFIED SERVICE PERSONNEL.

This lightning flash with arrowhead symbol within an equilateral triangle is intended to alert the user to the presence of uninsulated dangerous voltage within the product's enclosure that may be of sufficient magnitude to constitute a risk of electric shock to persons.

The exclamation point within an equilateral triangle is intended to alert the user to the presence of important operating and maintenance (servicing) instructions in the literature accompanying the product.

**WARNING:** TO PREVENT FIRE OR ELECTRIC SHOCK HAZARD, DO NOT EXPOSE THIS PRODUCT TO RAIN OR MOISTURE.

**WARNING:** Do not install this equipment in a confined space such as a book case or similar unit.

**CAUTION:** Do not use high voltage products around this product. (ex. Electrical swatter) This product may malfunction due to electrical shock.

**CAUTION:** Do not block any ventilation openings. Install in accordance with the manufacturer's instructions. Slots and openings in the cabinet are provided for ventilation and to ensure reliable operation of the product and to protect it from over heating. The openings shall be never be blocked by placing the product on a bed, sofa, rug or other similar surface. This product shall not be placed in a built-in installation such as a bookcase or rack unless proper ventilation is provided or the manufacturer's instruction has been adhered to.

**CAUTION:** This product employs a Laser System. To ensure proper use of this product, please read this owner's manual carefully and retain it for future reference. Shall the unit require maintenance, contact an authorized service center.

Use of controls, adjustments or the performance of procedures other than those specified herein may result in hazardous radiation exposure. To prevent direct exposure to laser beam, do not try to open the enclosure.

**CAUTION concerning the Power Cord**  
The Power Plug is the disconnecting device. In case of an emergency, the Power Plug must remain readily accessible.

**CAUTION:** The apparatus shall not be exposed to water (dripping or splashing) and no objects filled with liquids, such as vases, shall be placed on the apparatus.

**NOTICE:** For safety marking information including product identification and supply ratings, please refer to the main label on the bottom or rear of the apparatus.

This device is equipped with a portable battery or accumulator.

**Safety way to remove the battery or the battery from the equipment:** Remove the old battery or battery pack, follow the steps in reverse order than the assembly. To prevent contamination of the environment and bring on possible threat to human and animal health, the old battery or the battery put it in the appropriate container at designated collection points. Do not dispose of batteries or battery together with other waste. It is recommended that you use local, free reimbursement systems batteries and accumulators. The battery shall not be exposed to excessive heat such as sunshine, fire or the like.

### Disposal of your old appliance

1. All electrical and electronic products shall be disposed of separately from the municipal waste stream via designated collection facilities appointed by the government or the local authorities.
2. The correct disposal of your old appliance will help prevent potential negative consequences for the environment and human health.
3. For more detailed information about disposal of your old appliance, please contact your city office, waste disposal service or the shop where you purchased the product.

### Disposal of waste batteries/accumulators

1. This symbol may be combined with chemical symbols for mercury (Hg), cadmium (Cd) or lead (Pb) if the battery Contains more than 0.0005% of mercury, 0.002% of cadmium or 0.004% of lead.

2. All batteries/accumulators should be disposed separately from the municipal waste stream via designated collection facilities appointed by the government or the local authorities.
3. The correct disposal of Your old batteries/ accumulators will help to prevent potential negative consequences for the environment, animal and human health.
4. For more detailed information about disposal of Your old batteries/ accumulators, please contact Your city office, waste disposal service or the shop where you purchased the product.

## Declaration of Conformity

CE 0197  
Hereby, LG Electronics European Shared Service Center B.V. declares that this 3D BLU-RAY HOME CINEMA is compliant with the essential requirements and other relevant provisions of Directive 1999/5/EC. The complete Declaration of Conformity may be requested through the following postal address:

LG Electronics European Shared Service Center B.V.  
European Standard Team  
Krijgsman 1  
1186 DM Amstelveen  
The Netherlands

or can be requested at our dedicated DoC website:  
<http://www.lg.com/global/support/cedoc/cedoc#>

This device is a 2.4 GHz wideband transmission system, intended for use in all EU member states and EFTA countries.



## Technology with the human touch

### GUARANTEE

- LG Electronics U.K. Ltd. will provide the following services in order to expedite this Guarantee.
- 1. All faulty components which fail due to defective manufacture will be replaced free of charge for a period of 12 months from the original date of purchase.
- 2. The dealer (or his service agent) who sold the product will be reimbursed for any labour provided in the repair of this LG equipment, for a period of 12 months from the original date of purchase. These claims must be made in accordance with the published scale of service charges and relevant claims procedure.

### PLEASE NOTE:

- A. The dealer may restrict the guarantee to the original purchaser.
- B. The dealer is not obliged to carry out service under guarantee if unauthorized modifications are made to the apparatus, or if non standard components are used or if the serial number of the apparatus is removed, defaced, misused, or altered.
- C. Any claims made under guarantee must be directed to the dealer from whom the equipment was originally purchased. The dealer may, before carrying out service under guarantee, require a receipted account as evidence of the date of purchase.
- D. We respectfully point out that your dealer is not obligated to replace batteries if they become exhausted or worn in use.
- E. Aerial alignment and consumer control adjustments are not covered by this guarantee.

This guarantee does not affect your statutory rights.

- REQUIREMENTS TO MAINTAIN WARRANTY COVERAGE:  
RETAIN YOUR RECEIPT TO PROVE DATE OF PURCHASE. A COPY OF YOUR RECEIPT MUST BE SURRENDERED AT THE TIME GUARANTEE SERVICE IS PROVIDED.
- Product Registration Card :  
It is helpful to complete at least your name, address, phone, model & serial numbers and return it. This will enable LG to assist you in the future should you lose your receipt, your units be stolen, or should modifications be necessary.
- To obtain information or assistance:  
Call UK: 0344 847 5454 IE: 01 686 9454

MODEL NO.*	SERIAL NO.*	DATE OF PURCHASE.*

In all cases of difficulty - consult your LG dealer from whom the product was purchased

LG UK Website : [www.lg.com/uk](http://www.lg.com/uk)  
(Service website : [www.lg.com/uk/support](http://www.lg.com/uk/support))

