

# Network 3D Blu-ray Disc™/DVD Player

BP325

**ENGLISH | SIMPLE MANUAL**

To view the instructions of advanced features, visit <http://www.lg.com> and then download Owner's Manual.

**DEUTSCH | KURZANLEITUNG**

Anleitungen zu den erweiterten Funktionen finden in der Bedienungsanleitung, die Sie unter <http://www.lg.com> herunterladen können.

**FRANÇAIS | MANUEL SIMPLE**

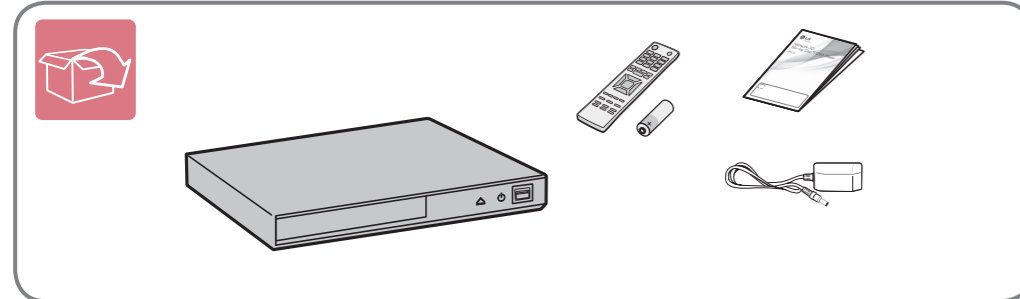
Pour visualiser les instructions des fonctionnalités avancées, visitez le site <http://www.lg.com> et téléchargez le manuel d'utilisation.

**ESPAÑOL | MANUAL SIMPLE**

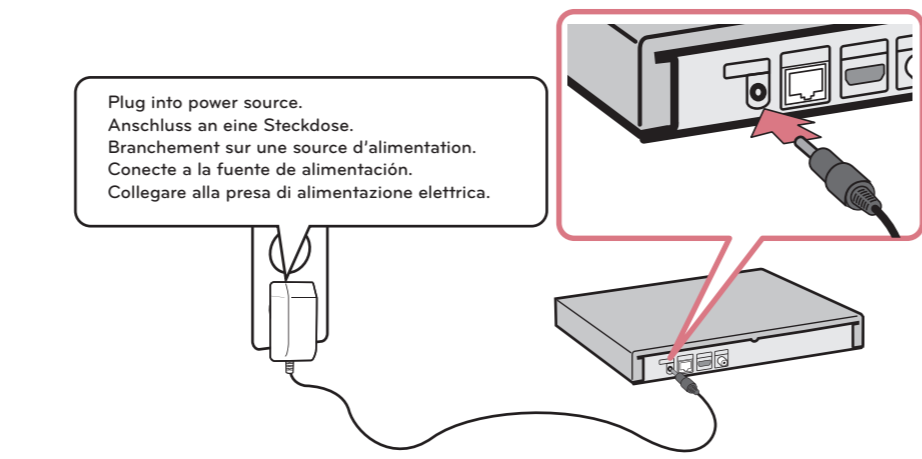
Para ver las instrucciones de las funciones avanzadas, visite <http://www.lg.com> y descargue el manual del propietario.

**ITALIANO | MANUALE SEMPLIFICATO**

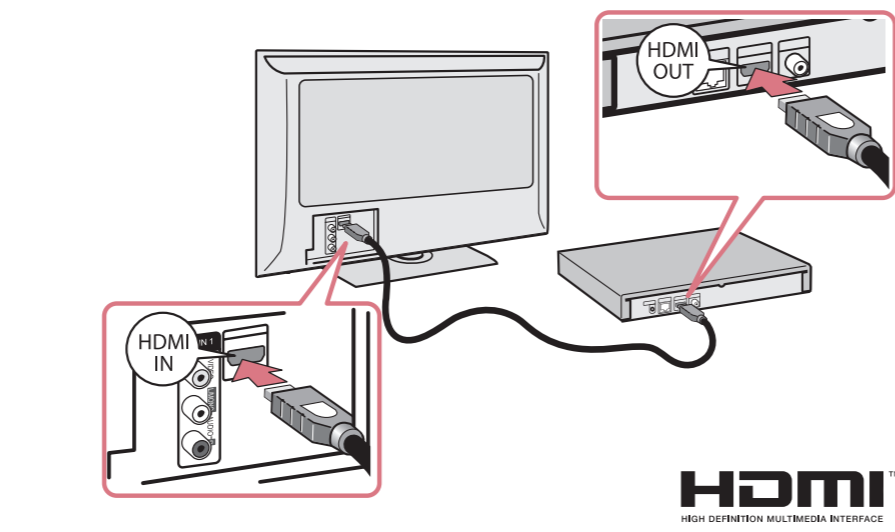
Per visualizzare le istruzioni delle caratteristiche avanzate, visitate il sito <http://www.lg.com> e quindi scaricare il manuale del proprietario.



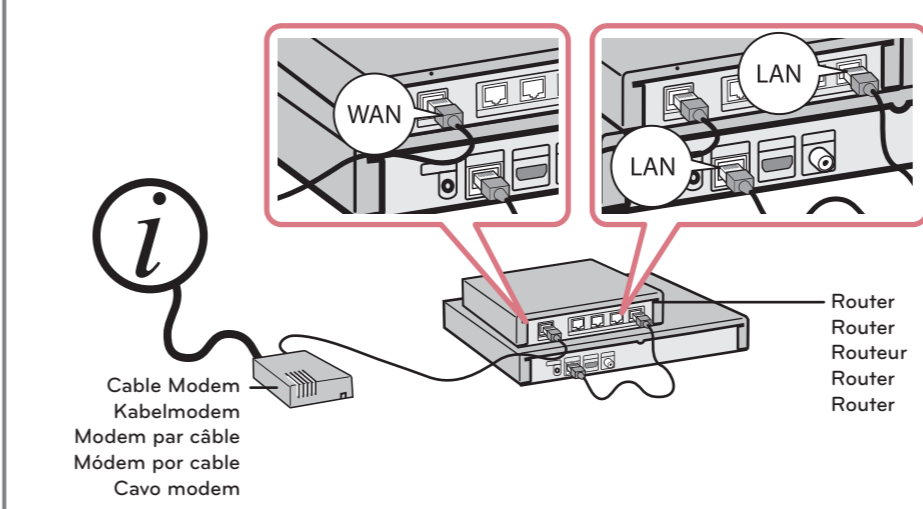
**Connecting the AC Adapter / Anschluss des Netzadapters / Raccordement de l'adaptateur CA / Conexión del adaptador CA / Collegamento di adattatore CA**



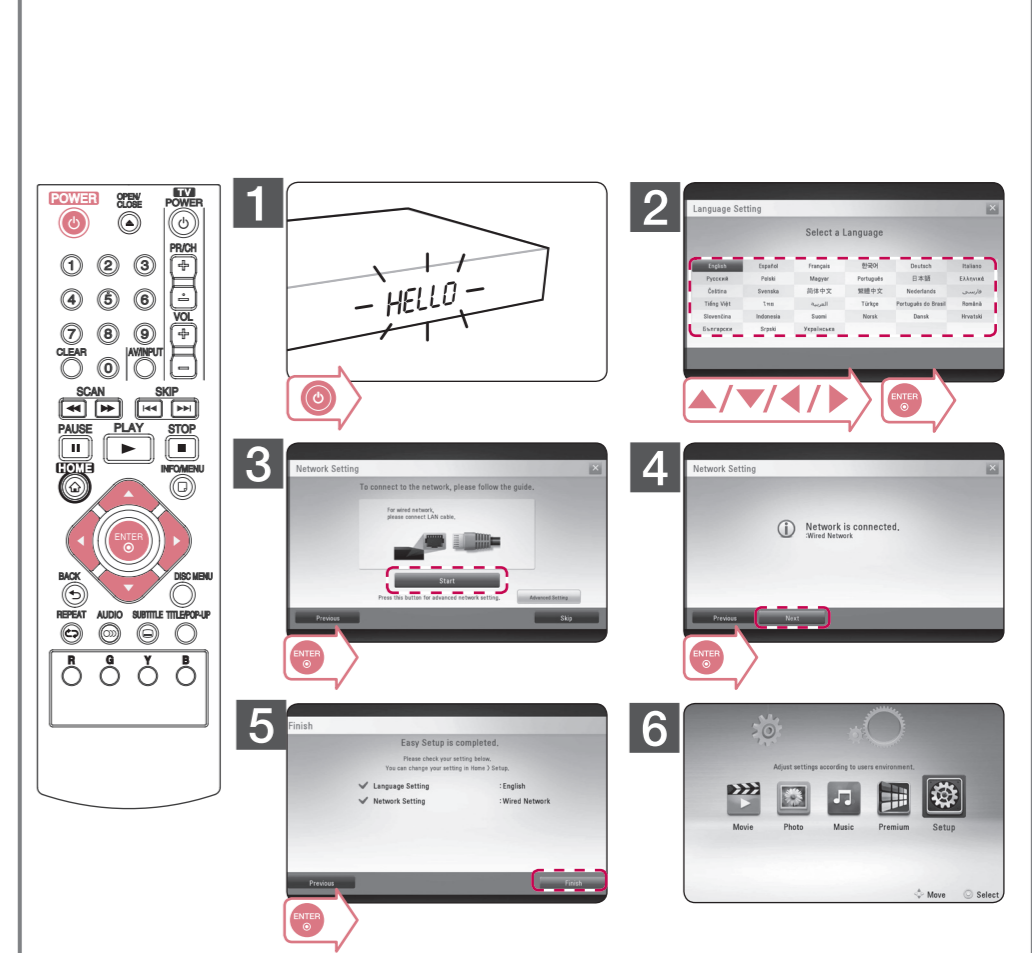
**TV Connection (HDMI OUT) / TV-Verbindung (HDMI OUT) / Raccordement télé (HDMI OUT) / Conexión de TV (HDMI OUT) / Collegamento TV (HDMI OUT)**



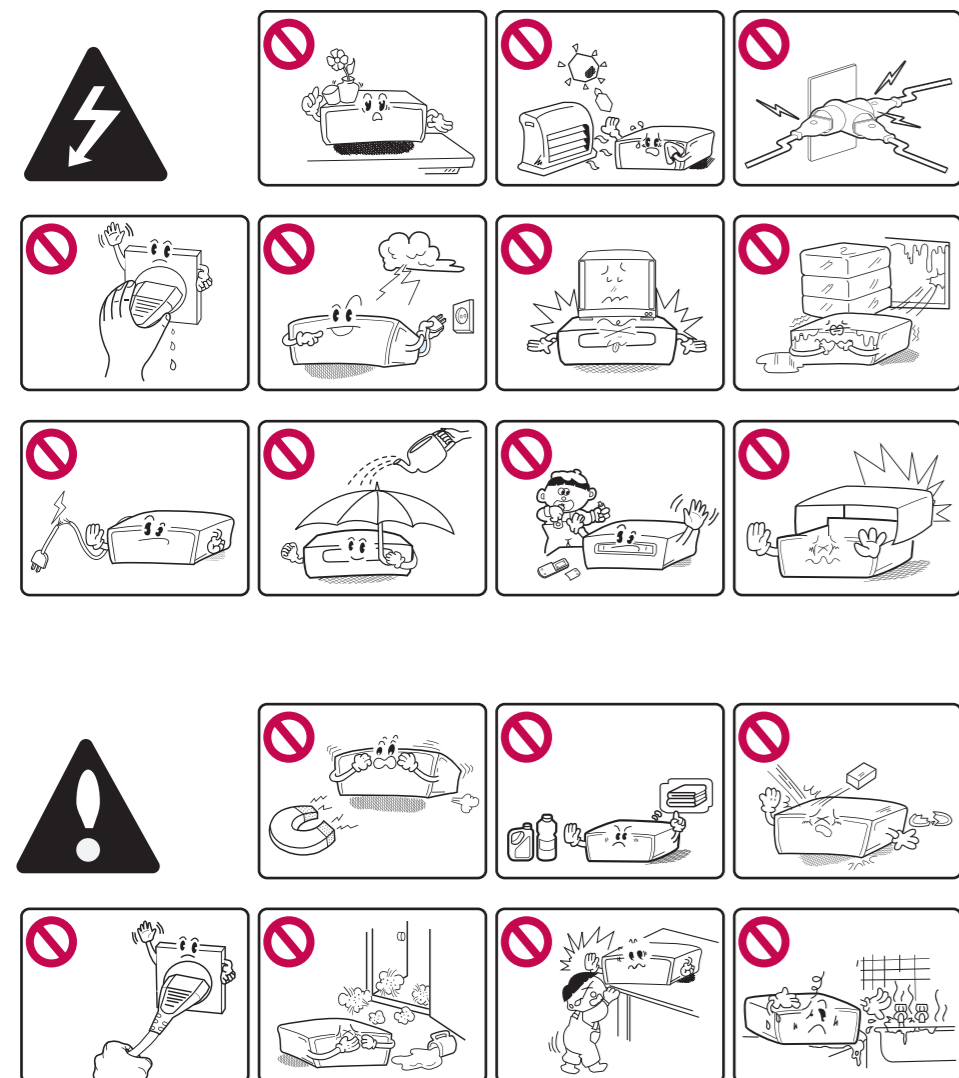
**Wired Network Connection / Kabel-Netzwerkverbindung / Connexion à un réseau filaire / Conexión a red por cable / Connessione di rete cablata**



**Initial Setup / Erst-Setup / Installation initiale / Instalación inicial / Configurazione iniziale**

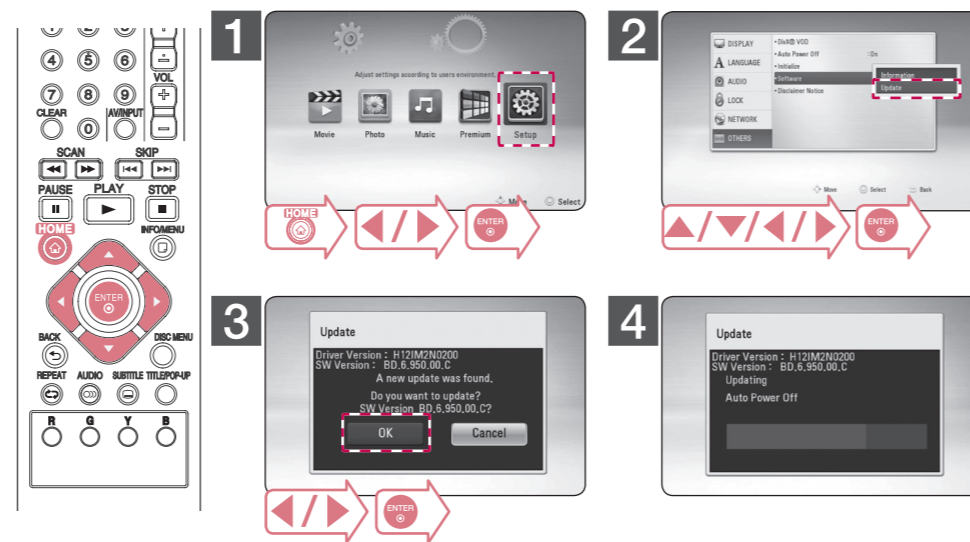


**Safety Information / Sicherheitshinweise / Consignes de sécurité / Información de seguridad / Informazioni di sicurezza**



<http://www.lg.com>

**Software Update / Software-Update / Mise à jour du logiciel / Actualización del software / Aggiornamento del software**



**Customer Support**

You can update the Player using the latest software to enhance the product's operation and/or add new features. To obtain the latest software for this player (if updates have been made), proceed the software updates as above or visit <http://www.lg.com/global/support> or contact LG Electronics customer care centre.

**Kundendienst**

Die Software des Players kann auf die neueste Version aktualisiert werden, um den Funktionsumfang zu erweitern und/oder neue Funktionen hinzuzufügen. Um die neueste Software-Version für diesen Player zu erhalten (falls Updates durchgeführt wurden), führen Sie wie oben beschrieben einen Software-Update durch, gehen Sie auf <http://www.lg.com/global/support> oder kontaktieren Sie das Kundendienst-Center von LG Electronics.

**Support client**

Vous pouvez mettre à jour le lecteur avec les logiciels les plus récents afin d'améliorer son fonctionnement et/ou d'ajouter de nouvelles fonctionnalités. Pour obtenir le logiciel le plus récent de ce lecteur (si les mises à jour ont été effectuées), faites les mises à jour du logiciel comme indiqué ci-dessus ou visitez <http://www.lg.com/global/support> ou contactez le service clientèle de LG Electronics.

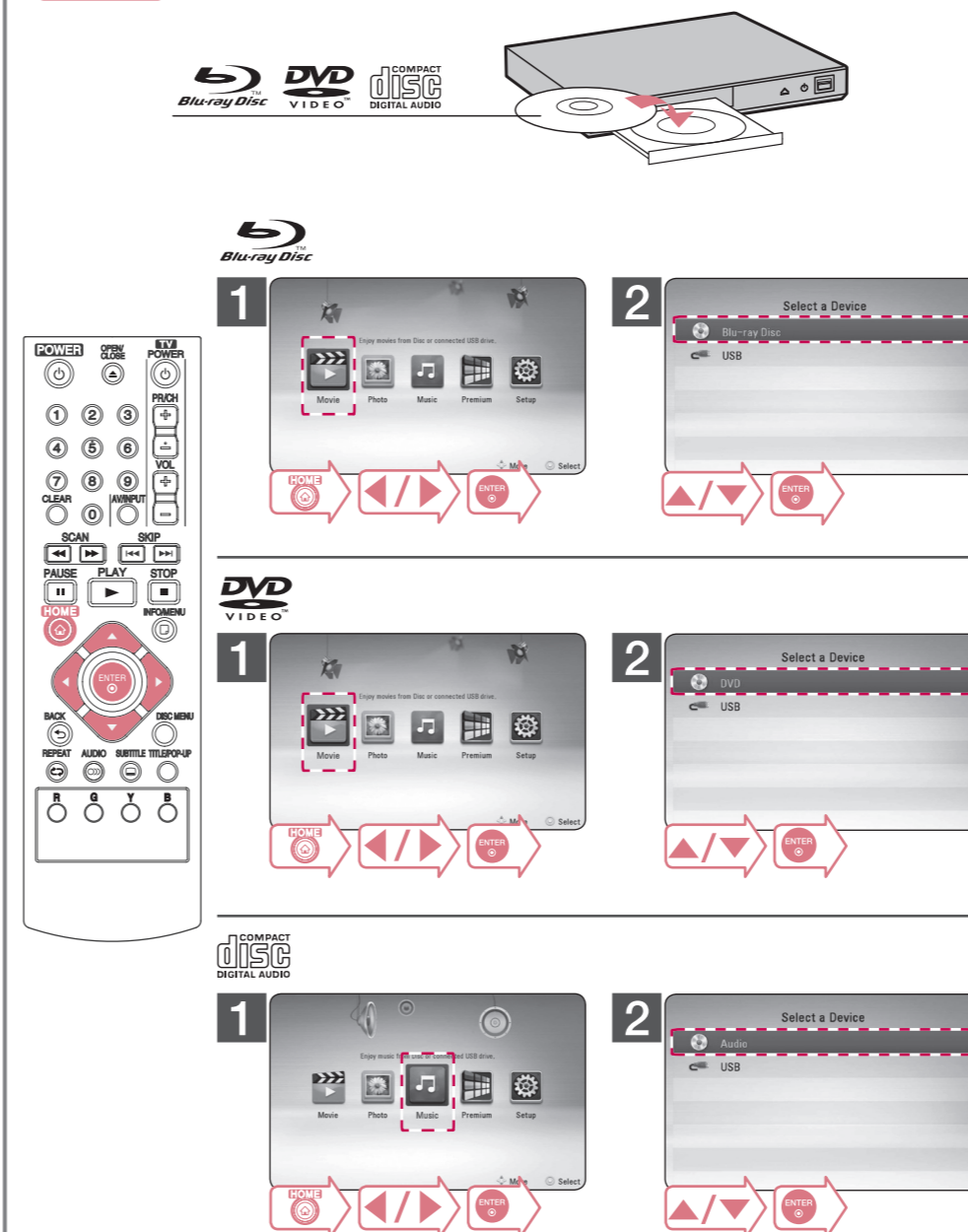
**Asistencia al cliente**

Es posible actualizar el reproductor con el software más reciente para mejorar el funcionamiento del producto e/o agregar nuevas funciones. Para conseguir el software más reciente para este reproductor (en caso de que se hayan hecho actualizaciones), realice las actualizaciones de software como se muestra anteriormente, entre en <http://www.lg.com/global/support> o póngase en contacto con el centro de atención al cliente de LG Electronics.

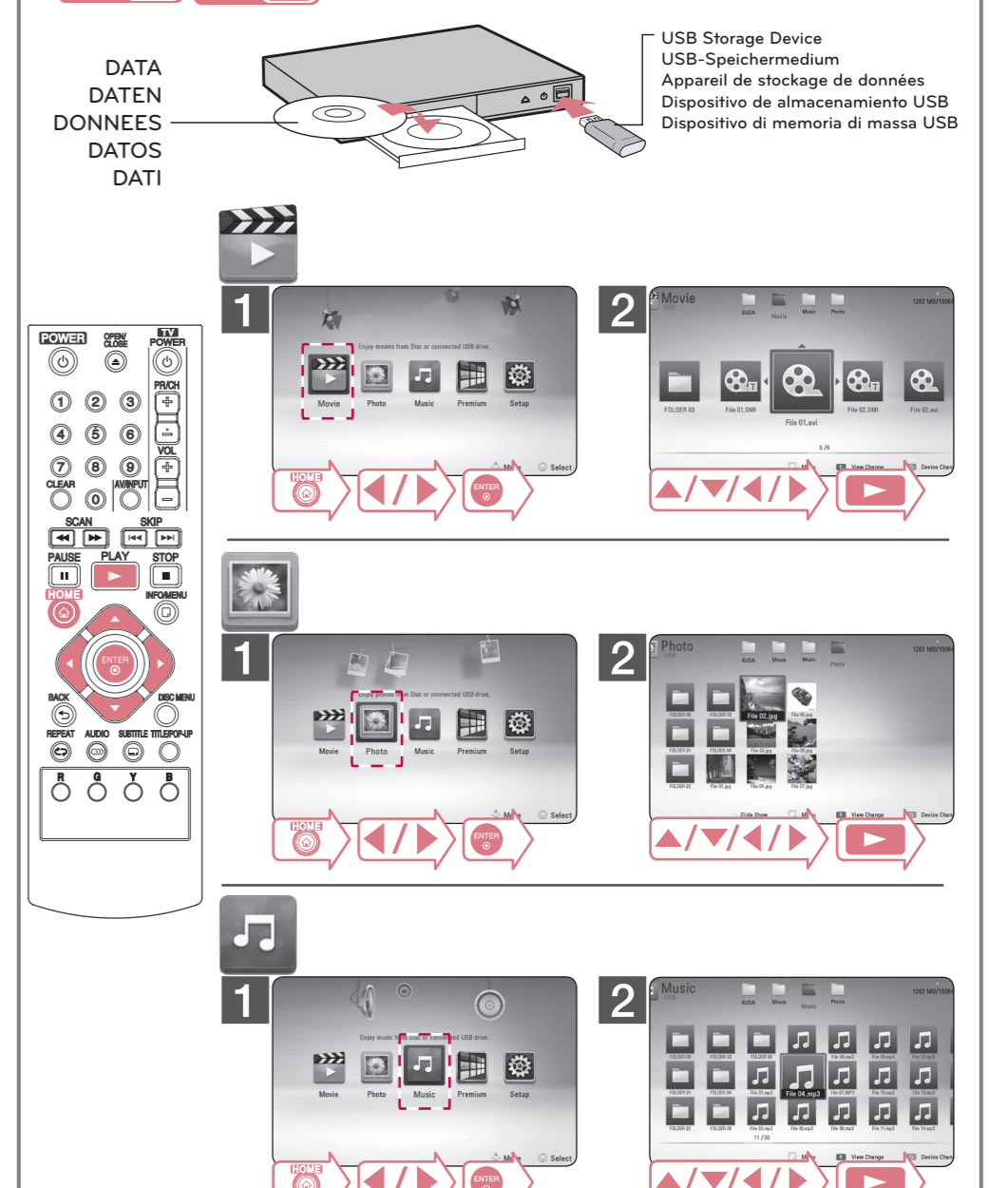
**Assistenza clienti**

Potete aggiornare il lettore usando il software più recente per migliorare il funzionamento del prodotto e/o aggiungere nuove funzionalità. Per ottenere il software più recente per il player (se sono stati fatti gli aggiornamenti), effettuate gli aggiornamenti software come sopra o visitate il sito o contattate il centro assistenza clienti LG Electronics a <http://www.lg.com/global/support>.

**Disc Playback / Disk-Wiedergabe / Lecteur de disque / Reproducción de discos / Riproduzione disco**

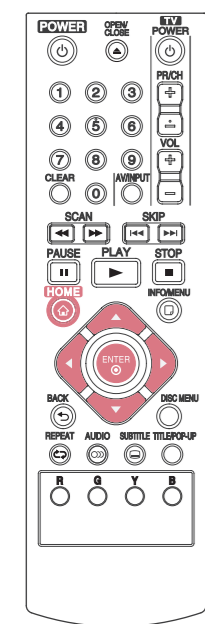


**Data Playback / Datenwiedergabe / Lecteur de données / Reproducción de datos / Riproduzione dati**





## Using HOME menu / Verwendung HOME-Menü / Utilisant le menu ACCUEIL / Uso del menú HOME / Utilizzo menù HOME



**[Music]** - Plays audio contents.  
**[Musik]** - Wiedergabe von Musik.  
**[Musique]** - Lit le contenu audio.  
**[Música]** - Reproduce contenidos de audio.  
**[Musica]** - Visualizza i contenuti di audio.



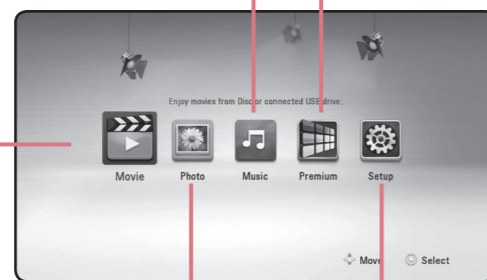
**[Movie]** - Plays video contents.  
**[Spielfilm]** - Wiedergabe von Videos.  
**[Film]** - Lit le contenu vidéo.  
**[Película]** - Reproduce contenidos de video.  
**[Video]** - Visualizza i contenuti di video.



**[Photo]** - Plays photo contents.  
**[Foto]** - Wiedergabe von Fotos.  
**[Photo]** - Lit le contenu photo.  
**[Foto]** - Reproduce contenidos de foto.  
**[Foto]** - Visualizza i contenuti di foto.



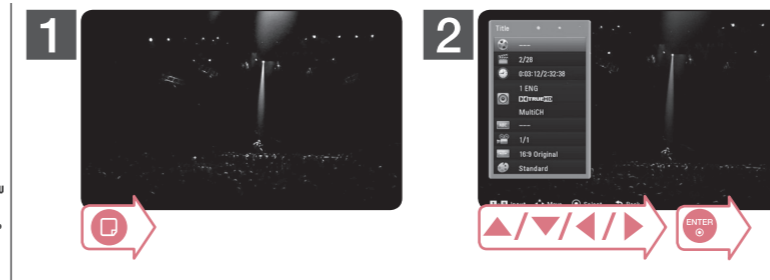
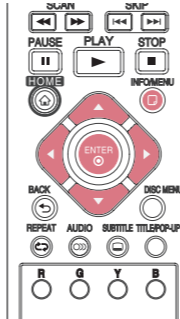
**[Premium]** - Displays the Premium Home screen.  
**[Premium]** - Premium-Startbildschirm aufrufen.  
**[Premium]** - Permet d'afficher l'écran d'accueil Premium.  
**[Premium]** - Muestra la pantalla de inicio Premium.  
**[Premium]** - Visualizza la schermata Home Premium.



**[Setup]** - Adjusts the system settings.  
**[Setup]** - Systemeinstellungen aufrufen.  
**[Config.]** - Donne accès à la configuration du système.  
**[Config.]** - Ajusta la configuración del sistema.  
**[Impostaz.]** - Regola le impostazioni del sistema.



## On-Screen Display / On Screen-Anzeige / Affichage sur écran / Presentación en pantalla / On-Screen Display



**CAUTION:** TO REDUCE THE RISK OF ELECTRIC SHOCK DO NOT REMOVE COVER (OR BACK) NO USER-SERVICEABLE PARTS INSIDE. REFER SERVICING TO QUALIFIED SERVICE PERSONNEL.



This lightning flash with arrowhead symbol within an equilateral triangle is intended to alert the user to the presence of uninsulated dangerous voltage within the product's enclosure that may be of sufficient magnitude to constitute a risk of electric shock to persons.



The exclamation point within an equilateral triangle is intended to alert the user to the presence of important operating and maintenance (servicing) instructions in the literature accompanying the product.

**WARNING:** TO PREVENT FIRE OR ELECTRIC SHOCK HAZARD, DO NOT EXPOSE THIS PRODUCT TO RAIN OR MOISTURE.

**CAUTION:** The apparatus shall not be exposed to water (dripping or splashing) and no objects filled with liquids, such as vases, shall be placed on the apparatus.

**WARNING:** Do not install this equipment in a confined space such as a book case or similar unit.

**CAUTION:** Do not block any ventilation openings. Install in accordance with the manufacturer's instructions.

Slots and openings in the cabinet are provided for ventilation and to ensure reliable operation of the product and to protect it from over heating. The openings shall be never be blocked by placing the product on a bed, sofa, rug or other similar surface. This product shall not be placed in a built-in installation such as a bookcase or rack unless proper ventilation is provided or the manufacturer's instruction has been adhered to.

Use of controls, adjustments or the performance of procedures other than those specified herein may result in hazardous radiation exposure.

**CAUTION concerning the Power Cord**  
To disconnect power from the mains, pull out the mains cord plug. When installing the product, ensure that the plug is easily accessible.

This device is equipped with a portable battery or accumulator.

**Safety way to remove the battery or the battery from the equipment:** Remove the old battery or battery pack, follow the steps in reverse order than the assembly. To prevent contamination of the environment and bring on possible threat to human and animal health, the old battery or the battery put it in the appropriate container at designated collection points. Do not dispose of batteries or battery together with other waste. It is recommended that you use local, free reimbursement systems batteries and accumulators. The battery shall not be exposed to excessive heat such as sunshine, fire or the like.

**NOTICE:** For safety marking information including product identification and supply ratings, please refer to the main label on the bottom or rear of the apparatus.

**CAUTION:** Only use the AC adapter supplied with this device. Do not use a power supply from another device or another manufacturer. Using any other power cable or power supply may cause damage to the device and void your warranty.

### Disposal of your old appliance

1. All electrical and electronic products should be disposed of separately from the municipal waste stream via designated collection facilities appointed by the government or the local authorities.

2. The correct disposal of your old appliance will help prevent potential negative consequences for the environment and human health.

3. For more detailed information about disposal of your old appliance, please contact your city office, waste disposal service or the shop where you purchased the product.

### Disposal of waste batteries/accumulators

1. This symbol may be combined with chemical symbols for mercury(Hg), cadmium(Cd) or lead(Pb) if the battery contains more than 0.0005% of mercury, 0.002% of cadmium or 0.004% of lead.

2. All batteries/accumulators should be disposed separately from the municipal waste stream via designated collection facilities appointed by the government or the local authorities.

3. The correct disposal of your old batteries/accumulators will help to prevent potential negative consequences for the environment, animal and human health.

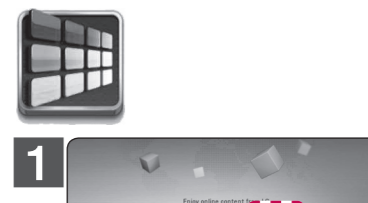
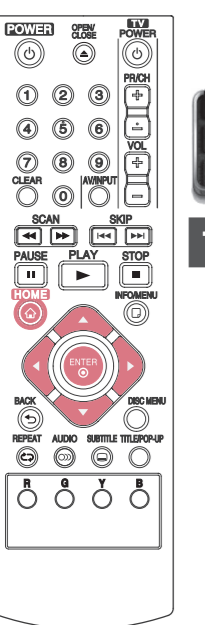
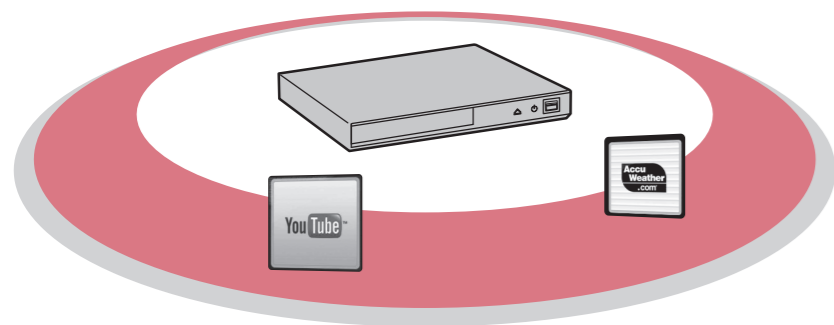
4. For more detailed information about disposal of your old batteries/accumulators, please contact Your city office, waste disposal service or the shop where you purchased the product.

**CE** LG Electronics hereby declares that this/these product(s) is/are in compliance with the essential requirements and other relevant provisions of Directive 2004/108/EC, 2006/95/EC and 2009/125/EC.

**European Standards Centre:**  
Krijgsman 1, 1186 DM Amstelveen The Netherlands  
• Please note that this is NOT a Customer Service contact point. For Customer Service Information, see Warranty Card or contact the dealer that you purchased this product.



## On Line Content / Online-Inhalte / Contenus en ligne / Contenidos en línea / Contenuti on-line



## Specification / Technische Daten / Spécifications / Especificaciones / Specifiche

### ENGLISH

Power requirements	12V $\equiv$ 1 A
AC adapter	WA-12M12FG
Dimensions (W x H x D)	Approx. 270 x 39 x 198 mm
Net Weight (Approx.)	0.95 Kg
Bus Power Supply (USB)	DC 5 V $\equiv$ 500 mA

Design and specifications are subject to change without notice.

### DEUTSCH

Stromversorgung	12V $\equiv$ 1 A
Netzadapter	WA-12M12FG
Abmessungen (B x H x T)	270 x 39 x 198 mm
Gesamtgewicht (ca.)	0.95 Kg
Stromversorgung über Bus (USB)	DC 5 V $\equiv$ 500 mA

Änderungen der Ausführung und der technischen Daten ohne vorherige Ankündigung vorbehalten.

### FRANÇAIS

Alimentation	12V $\equiv$ 1 A
Consommation électrique	WA-12M12FG
Dimensions (L x H x P)	Approximativement 270 x 39 x 198 mm
Poids net (approx.)	0.95 Kg
Bus Power Supply (USB)	DC 5 V $\equiv$ 500 mA

La conception et les spécifications sont sujettes à modification sans préavis.

### ESPAÑOL

Requisitos de alimentación	12V $\equiv$ 1 A
Consumo de energía	WA-12M12FG
Dimensiones (A x Alt x F)	Aprox. 270 x 39 x 198 mm
Peso neto (aprox.)	0.95 Kg
Alimentación bus (USB)	DC 5 V $\equiv$ 500 mA

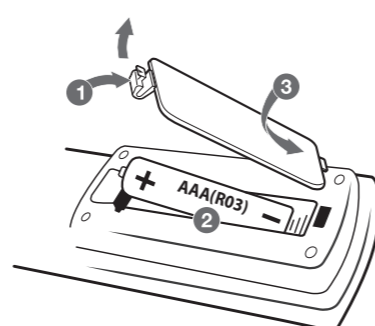
El diseño y las especificaciones están sujetas a cambio sin previo aviso.

### ITALIANO

Requisiti di alimentazione	12V $\equiv$ 1 A
Assorbimento energetico	WA-12M12FG
DIMENSIONI (L x A x P)	Approx. 270 x 39 x 198 mm
Peso netto (approssimativo)	0.95 Kg
Alimentazione tensione bus (USB)	DC 5 V $\equiv$ 500 mA

Il design e le specifiche tecniche sono soggette a cambiamento senza preavviso.

## Replacement of battery / Austausch der Batterie / Remplacement de la pile / Sustitución de la pila / Sostituzione della batteria



### Open source software notice

To obtain the corresponding source code under GPL, LGPL and other open source licenses, please visit <http://opensource.lge.com>. All referred license terms, warranty disclaimers and copyright notices are available to download with the source code.

### Hinweise zu Open Source-Software

Eine Kopie der GPL-, LGPL- und anderer Open Source-Genehmigungen finden Sie unter <http://opensource.lge.com>. Sämtliche angegebenen Lizenzbedingungen, Haftungsausschlüsse und Hinweise zum Urheberrecht stehen als Quellcode zum Download bereit.

### Avis concernant les logiciels open source

Pour connaître le code source correspondant de GPL, LGPL et d'autres licences open source, rendez-vous sur <http://opensource.lge.com>. Les conditions de licence, les dénis de responsabilités et les avis concernant les droits d'auteur sont disponibles en téléchargement avec le code source.

### Aviso sobre el software de código abierto

Para obtener el correspondiente código bajo la licencia de GPL, LGPL y otras licencias de código abierto, visite <http://opensource.lge.com>. Todos los terminos referidos, la exclusion de garantía y los avisos de copyright pueden descargarse con código abierto.

### Nota di software di libera circolazione

Per ottenere il corrispondente codice di software di libera circolazione in base alle licenze GPL, LGPL e altre, visitate il sito <http://opensource.lge.com>. Tutti i termini relativi a licenza, rivendicazioni di garanzia e note di copyright sono disponibili per lo scaricamento con il codice di sorgente.

