



ENGLISH

SIMPLE MANUAL

# LG Wi-Fi Sound Bar

Please read this manual carefully before operating your set and retain it for future reference.  
To view the instructions of advanced features, visit <http://www.lg.com> and then download Owner's Manual. Some of the content in this manual may differ from your unit.

MODEL  
SL8Y



www.lg.com  
Copyright © 2019 LG Electronics Inc. All Rights Reserved.



.....

.....

.....

.....

.....

.....

.....

.....

.....

.....



.....

.....

.....

.....

.....

.....

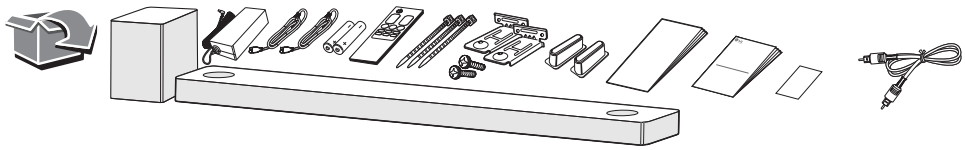
.....

.....

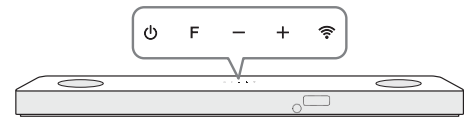
.....

.....



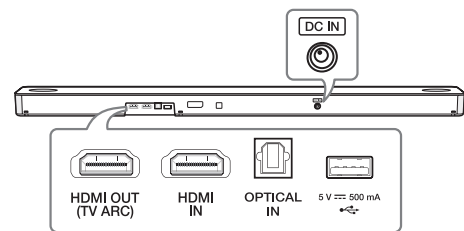


## Front Panel



- ⏻ (Standby) ..... Switches the unit ON or OFF.
- F (Function) ..... Selects function.
- /+ (Volume) ..... Adjusts volume.
- 📶 (Wi-Fi) ..... Selects Wi-Fi function.

## Rear Panel



- HDMI OUT (TV ARC) ..... Connect to a TV.
- HDMI IN ..... Connect to device with HDMI OUT.
- OPTICAL IN ..... Connect to an optical device.
- USB port ..... Connect to a USB device.
- DC IN ..... Connect to the AC adapter.

## Subwoofer Connection

Place the wireless subwoofer near the sound bar and follow steps below.

- 1 Connect the power cord of the sound bar and the wireless subwoofer to the outlet.
- 2 Turn on the sound bar.
  - The sound bar and wireless subwoofer will be **automatically** connected. The subwoofer's green LED turns on.

## Manually Subwoofer Connection

If the subwoofer does not make sound, try to connect manually.

- 1 Press **Pairing** on the rear of the wireless subwoofer.
  - The green LED on the rear of the wireless subwoofer blinks quickly. (If the green LED does not blink, press and hold the **Pairing**.)
- 2 Turn on the sound bar.
  - Pairing is completed. The green LED on the rear of the wireless subwoofer turns on.

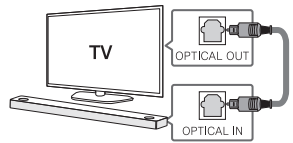
! Keep the sound bar and the subwoofer away from the device (ex. wireless router, microwave oven, etc.) over 1 m to prevent wireless interference.

## TV Connection

Connect the sound bar and TV using Optical (A) or HDMI ARC (B).

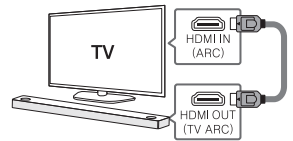
### A Optical Connection

- 1 Connect the sound bar to the TV using Optical cable.
- 2 Set up [External Speaker (Optical)] on your TV setting menu.



### B HDMI (ARC) Connection

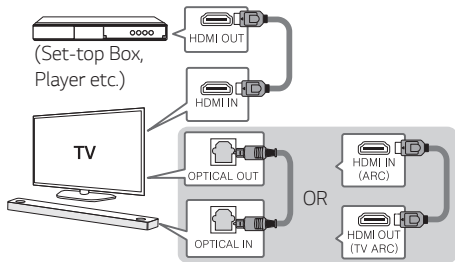
- 1 Connect the sound bar to the TV using HDMI cable.
- 2 Set up [External Speaker (HDMI ARC)] on your TV setting menu.



- !
- HDMI connection is unavailable if your TV does not support HDMI ARC.
  - If this unit is connected by OPTICAL and ARC at the same time, the ARC signal is a high priority.

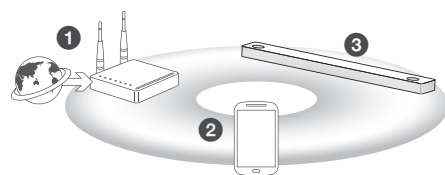
## Additional Device Connection

- 1 Connect to the external device like as follow.



- 2 Set the input source by pressing **F** repeatedly.

## Network Connection



- 1 Check network condition. A router connected to network should be installed.
- 2 Connect your smart device to your home network.
- 3 Connect the sound bar to the power supply.

- !
- All devices should be connected to same router.

## Step.1 Install “Google Home” App

Download the Google Home App from the Google Play or App Store.

## Step.2 Set up the Wi-Fi connection with app

- 1 Connect your smart device to the Wi-Fi network that you'll use for your speaker.

- !
- In case of iOS devices, it should be turned on **Bluetooth** setting on your smart device.

- 2 Launch the “Google Home” app.
- 3 Follow the steps for Wi-Fi connection on the app.
  - When the speaker is properly connected to Wi-Fi, “CONNECTED” will appear on the display window with sound.

- !
- When connect to Wi-Fi, this app may request to create a Google Account. You will need a Google account to use this app.
  - “Google Home” app is provided by Google. It might be revised by a change of Google Policy.

## Bluetooth Connection

### Step 1. Connect the Wi-Fi

Make sure the speaker connects to Wi-Fi by using “Google Home” app.

- !
- Bluetooth** function is inactive before connecting to Wi-Fi.

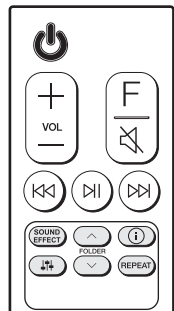
### Step 2. Change Function

Select the **Bluetooth** function by pressing **F** repeatedly.

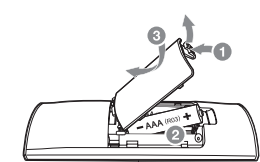
### Step 3. Find and Select your speaker name

Select speaker name that was set on “Google Home” app on the device list of your smart device. When successfully connected **Bluetooth**, “PAIRED” will appear on display window.

## Remote control



## Replacement of Battery



**SOUND EFFECT:** Selects a sound effect mode.

- **TV remote:** Long press **SOUND EFFECT** and press it again to use TV remote control.

**FOLDER** ^/∨: Searches a folder.

ⓘ: Displays the information of a file, an input source, a connected **Bluetooth** device name or an application name.

- **Auto Power ON/OFF:** Long press ⓘ and press it again.

🔊: Adjusts sound level of each speaker.

- **Surround sound:** Long press 🔊 and press it again.

**REPEAT:** Listens to your files repeatedly or randomly.

## Additional

### Download LG Wi-Fi Speaker Application

You can manage the speaker settings and control the speaker by using “LG Wi-Fi Speaker”.

Download “LG Wi-Fi Speaker” on the App Store or Google Play Store.

## Additional Information

### Specification

Power consumption	Refer to the main label.
AC adapter	<ul style="list-style-type: none"><li>• Model: DA-50F25</li><li>• Manufacturer : Asian Power Devices Inc.</li><li>• Input: 100 - 240 V ~ 50 - 60 Hz</li><li>• Output: 25 V <math>\overline{\sim}</math> 2 A</li></ul>
Dimensions (W x H x D)	Approx. 1060.0 mm x 57.0 mm x 119.0 mm (with foot)
Bus Power Supply (USB)	5 V $\overline{\sim}$ 500 mA
Amplifier (Total RMS Output power)	440 W RMS

Design and specifications are subject to change without notice.



### Rear Speakers Ready

Ready for surround sound with Rear Speakers Kit sold separately. (SPK8-S)

## OPEN SOURCE SOFTWARE NOTICE INFORMATION

To obtain the source code under GPL, LGPL, MPL, and other open source licenses, that is contained in this product, please visit <http://opensource.lge.com>.

In addition to the source code, all referred license terms, warranty disclaimers and copyright notices are available for download.

LG Electronics will also provide open source code to you on CD-ROM for a charge covering the cost of performing such distribution (such as the cost of media, shipping, and handling) upon email request to [opensource@lge.com](mailto:opensource@lge.com).

This offer is valid for a period of three years after our last shipment of this product. This offer is valid to anyone in receipt of this information.

**POWER:** This unit operates on a mains supply of 100 - 240 V ~ 50 / 60 Hz.

**Wiring:** This unit is supplied with a BS 1363 approved main plug. When replacing the fuse, always use a fuse of the same rating and approved to BS 1362. Never use this plug with the fuse cover omitted. To obtain a replacement fuse cover contact your dealer. If the type of plug supplied is not suitable for the mains sockets in your home, then the plug should be removed and a suitable type fitted. Please refer to the wiring instructions below.

**Warning:** A mains plug removed from the mains lead of this unit must be destroyed. A mains plug with bared wires is hazardous if inserted in a mains socket. Do not connect either wire to the earth pin, marked with the letter E or with the earth symbol  $\perp$  or coloured green or green and yellow. If any other plug is fitted, use same rating of fuse in the plug.

**Important:** The wires in this mains lead are coloured in accordance with the following codes:

- **BLUE: NEUTRAL, BROWN: LIVE** - As the colours of the wires in the mains lead of this unit may not correspond with the coloured marking identifying the terminals in your plug, proceed as follows: The wire which is coloured blue must be connected to the terminal which is marked with the letter N or coloured black. The wire which is coloured brown must be connected to the terminal which is marked with the letter L or coloured red.

