

SIMPLE MANUAL

Mini Hi-Fi System

To view the instructions of advanced features,
visit <http://www.lg.com> and then download Owner's Manual.
Some of the content in this manual may differ from your unit.

FOR THE GUARANTEE TERMS & CONDITIONS, PLEASE REFER TO
INNER SIDE OF BACK COVER.

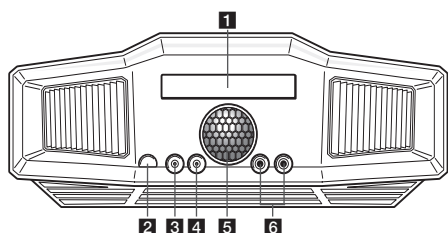
MODEL
CM9960



www.lg.com

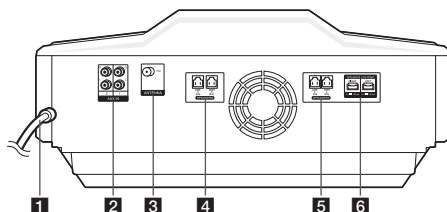


Front Panel



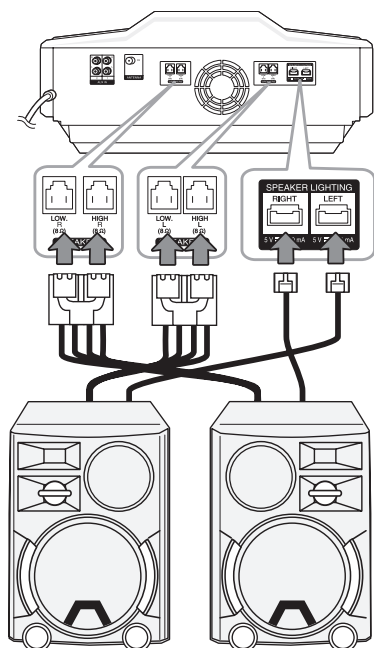
- 1** Disc tray
- 2** Remote Sensor
- 3** **HEADPHONE**
Connects a headphone.
- 4** **PORT.IN**
Connects a portable device.
- 5** **DANCE LIGHTING** (Lighting ball)
- Shows the various lighting patterns and color.
- You can control angle up and down with your finger.
- 6** **MIC 1/2**
Connects a microphone.

Rear Panel



- 1** Power cord
- 2** **AUX IN 1/2 (L/R)**
- 3** **ANTENNA (FM)**
- 4** **R SPEAKERS**
Connects the right speaker's cables.
- 5** **L SPEAKERS**
Connects the left speaker's cables.
- 6** **SPEAKER LIGHTING**
Connects the speaker lighting cables.

Speaker Connection



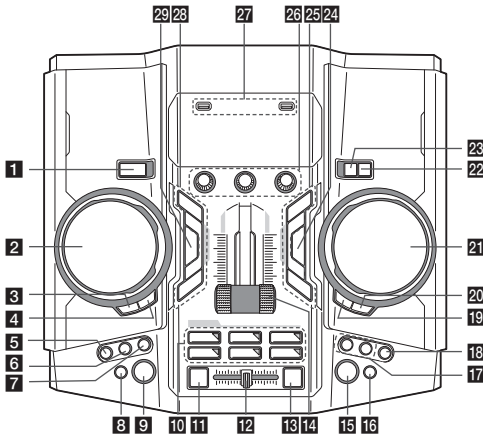
Additional Information

Specifications

Power Requirements	Refer to the main label on the unit.
Power Consumption	Refer to the main label on the unit.
Power Consumption	Networked standby : 0.5 W (If all network ports are activated.)
Dimensions (W x H x D)	Approx. 470 mm x 240 mm x 420 mm
Net Weight	Approx. 7.7 kg
Bus Power Supply (USB)	5 V 500 mA
Amplifier (Total RMS output power)	4,800 W

Design and specifications are subject to change without notice.

Top Panel



- 1** **⏻/I (Power)**
- 2** **SCRATCH / LEVEL CONTROL, SEARCH KNOB (A SIDE)**
 - Turns clockwise or counterclockwise to make the scratch sound.
 - Turns clockwise or counterclockwise to control the DJ EFFECT level.
 - Turns clockwise or counterclockwise to search to the next/previous file or next/previous folder (CD/USB 1 only)
- 3** **SEARCH (A SIDE)**
Searches to the next/previous file or next/previous folder by pressing SEARCH repeatedly. (CD/USB 1 only)
- 4** **OK (A SIDE)**
Selects the desired file or folder after searching a file or folder. (CD/USB 1 only)
- 5** **H/P MODE**
Presses to select a headphone monitor mode.
- 6** **H/P VOLUME**
Presses to select a headphone's volume control mode.
- 7** **MIC VOLUME**
Presses to select a microphone's volume control mode.
- 8** **BASS BLAST**
Selects BASS BLAST effect directly.
- 9** **LIGHTING**
Changes the lighting patterns and colors or turns off the lighting effects of DANCE LIGHTING and SPEAKER LIGHTING.
- 10** **DJ PRO PAD**
Presses a desired sound pad.
- 11** **AUTO SYNC**
When using MIX, you can synchronize the tempo of audio files being played in USB 1 and USB 2 by pressing **AUTO SYNC**.
- 12** **Cross fader**
Adjusts the sound volume of mixing files when using MIX ON by pressing **MIX**.
- 13** **MIX**
Mixes audio sound.
- 14** **PARTY THRUSTER**
Slide the lever to create a party atmosphere.

- 15** **REGION EQ**
Chooses region equalizer.
- 16** **▲ EJECT**
Opens and closes the disc tray.
- 17** **KEY CHANGER (b/≠)**
Changes the key to suit your vocal range.
- 18** **VOICE CANCELLER**
You can enjoy the function while playing the music, by reducing singer vocal of music in the various source.
- 19** **SEARCH (B SIDE)**
Searches to the next/previous file or next/previous folder by pressing SEARCH repeatedly. (USB 2 only)
- 20** **OK (B SIDE)**
Selects the desired file or folder after searching a file or folder. (USB 2 only)
- 21** **SCRATCH / LEVEL CONTROL, SEARCH KNOB (B SIDE)**
 - Turns clockwise or counterclockwise to make the scratch sound.
 - Turns clockwise or counterclockwise to control the USER EQ level.
 - Turns clockwise or counterclockwise to search to the next/previous file or next/previous folder. (USB 2 only)
- 22** **F / WIRELESS BOOM**
 - Selects the function and input source.
 - Press and hold for 3 seconds to select Wireless X-Boom Plus mode.
- 23** **USB REC / DEMO**
 - Records to USB 1.
 - Copies USB 2 to USB 1.
 - Shows DEMO mode.
- 24** **USER EQ**
Selects the sound effect created by your own.
- 25** **Basic controls (USB 2 only)**
⏮/⏭
 Skips Fast backward or Forward. /
 Searches for a section within a track/file by pressing and holding.
>||
 Starts or pauses playback.
□
 Stops playback or cancels DELETE function.
- 26** **A / B TEMPO**
Adjusts TEMPO in USB function.
VOLUME
 Adjusts speaker, microphone or headphone volume.
- 27** **USB 1 **A** / USB 2 **B****
You can play or record sound files by connecting the USB device.
- 28** **Basic controls (CD / USB 1 / BLUETOOTH / RADIO only)**
⏮/⏭
 - Skips Fast backward or Forward. /
 - Searches for a section within a track/file by pressing and holding.
 - Selects the radio stations.
>||
 - Starts or pauses playback.
 - Selects STEREO/MONO.
□, RDS
 - Stops playback or cancels DELETE function.
 - Radio Data System.
- 29** **DJ EFFECT**
Selects a desired DJ EFFECT.

Additional Information

Caution

- When you use the multiple socket, it is advisable to use 15 A socket. 10 A socket may cause power off due to lack of power supply.
- Do not place objects on the speakers. It may cause the objects to fall and make property damage.
- Install the speakers on a firm surface not to slide. The vibration caused by the strong output can shake and move the speakers.
- Avoid turning up max volume in a small enclosed space. The powerful and intense output of the speakers can shake the ceiling and get the objects in the room falling.
- To protect from hearing damage, keep the sufficient distance from the speaker. The overwhelming sound from the speaker may cause a person's hearing damage.
- Allow more than 20 cm of free space between the main set and the speakers when you install the main set on the ground. High sound pressure from the speakers can make the set tremble to disturb the CD playback.
- Connect the power cord to wall outlet directly if possible. Or when you use an extension cable, it is highly recommended to use an extension cable of 110 V / 15 A or 230 V / 15 A, otherwise the unit may not operate properly because of the lack of power supply.
- Do not overload the extension cord with excessive electrical load.

Note

- Do not look directly at the light emitting part when the LIGHTING is turned on.
- If the illumination brightness is glaring, switch on the room lights or turn off the LIGHTING of the unit.

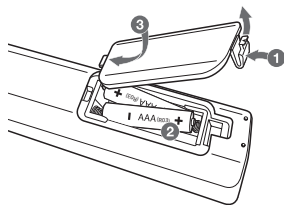
Grounding

(Except for devices which are not grounded.) Ensure that you connect the earth ground wire to prevent possible electric shock (i.e. a Audio with a three-prong grounded AC plug must be connected to a three-prong grounded AC outlet). If grounding methods are not possible, have a qualified electrician install a separate circuit breaker. Do not try to ground the unit by connecting it to telephone wires, lightning rods, or gas pipes.

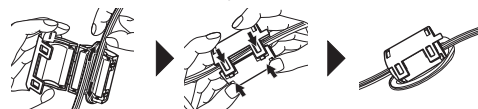
How to disconnect the wireless network connection or the wireless device

Turn off the unit by pressing the power button for more than 5 seconds.

Replacement of battery



About Ferrite Core (Optional)



Wind the L SPEAKERS cables around the ferrite core twice.
Wind the R SPEAKERS cables around the ferrite core twice.
Wind the LEFT and RIGHT SPEAKER LIGHTING cables all together around the ferrite core twice.

Controller App



Download the **Music Flow Bluetooth** App to your device.

LG Sound Sync (Wireless)



For more information, download the online owner's manual. <http://www.lg.com>



CAUTION
RISK OF ELECTRIC SHOCK
DO NOT OPEN



CAUTION: TO REDUCE THE RISK OF ELECTRIC SHOCK
DO NOT REMOVE COVER (OR BACK) NO
USER-SERVICEABLE PARTS INSIDE REFER SERVICING TO
QUALIFIED SERVICE PERSONNEL



This lightning flash with arrowhead symbol within an equilateral triangle is intended to alert the user to the presence of uninsulated dangerous voltage within the product's enclosure that may be of sufficient magnitude to constitute a risk of electric shock to persons.



The exclamation point within an equilateral triangle is intended to alert the user to the presence of important operating and maintenance (servicing) instructions in the literature accompanying the product.

WARNING: TO PREVENT FIRE OR ELECTRIC SHOCK
HAZARD, DO NOT EXPOSE THIS PRODUCT TO RAIN OR
MOISTURE.

WARNING: Do not install this equipment in a confined space such as a book case or similar unit.

CAUTION: Do not use high voltage products around this product. (ex. Electrical swatter) This product may malfunction due to electrical shock.

CAUTION: Do not block any ventilation openings. Install in accordance with the manufacturer's instructions. Slots and openings in the cabinet are provided for ventilation and to ensure reliable operation of the product and to protect it from over heating. The openings shall be never be blocked by placing the product on a bed, sofa, rug or other similar surface. This product shall not be placed in a built-in installation such as a bookcase or rack unless proper ventilation is provided or the manufacturer's instruction has been adhered to.



CAUTION: This product employs a Laser System. To ensure proper use of this product, please read this owner's manual carefully

and retain it for future reference. Shall the unit require maintenance, contact an authorized service center. Use of controls, adjustments or the performance of procedures other than those specified herein may result in hazardous radiation exposure. To prevent direct exposure to laser beam, do not try to open the enclosure.

CAUTION concerning the Power Cord

The Power Plug is the disconnecting device. In case of an emergency, the Power Plug must remain readily accessible.

CAUTION: The apparatus should not be exposed to water (dripping or splashing) and no objects filled with liquids, such as vases, should be placed on the apparatus.

NOTICE: For safety marking information including product identification and supply ratings, please refer to the main label on the bottom or the other surface of the product.

This device is equipped with a portable battery or accumulator.

Safety way to remove the battery or the battery from the equipment:

Remove the old battery or battery pack, follow the steps in reverse order than the assembly. To prevent contamination of the environment and bring on possible threat to human and animal health, the old battery or the battery put it in the appropriate container at designated collection points. Do not dispose of batteries or battery together with other waste. It is recommended that you use local, free reimbursement systems batteries and accumulators. The battery shall not be exposed to excessive heat such as sunshine, fire or the like.

CAUTION: No naked flame sources, such as lighted candles, should be placed on the apparatus.

Disposal of your old appliance



1. This crossed-out wheeled bin symbol indicates that waste electrical and electronic products (WEEE) should be disposed of separately from the municipal waste stream.
2. Old electrical products can contain hazardous substances so correct disposal of your old appliance will help prevent potential negative consequences for the environment and human health. Your old appliance may contain reusable parts that could be used to repair other products, and other valuable materials that can be recycled to conserve limited resources.
3. You can take your appliance either to the shop where you purchased the product, or contact your local government waste office for details of your nearest authorised WEEE collection point. For the most up to date information for your country please see www.lg.com/global/recycling

Disposal of waste batteries/accumulators



Pb

1. This symbol may be combined with chemical symbols for mercury (Hg), cadmium (Cd) or lead (Pb) if the battery contains more than 0.0005% of mercury, 0.002% of cadmium or 0.004% of lead.
2. All batteries/accumulators should be disposed separately from the municipal waste stream via designated collection facilities appointed by the government or the local authorities.
3. The correct disposal of your old batteries/accumulators will help to prevent potential negative consequences for the environment, animal and human health.
4. For more detailed information about disposal of your old batteries/ accumulators, please contact your city office, waste disposal service or the shop where you purchased the product. (<http://www.lg.com/global/sustainability/environment/take-back-recycling/global-network-europe>)

Declaration of Conformity

CE 0197

Hereby, LG Electronics European Shared Service Center BV, declares that this MINI HI-FI SYSTEM is compliant with the essential requirements and other relevant provisions of Directive 1999/5/EC. The complete Declaration of Conformity may be requested through the following postal address:

LG Electronics European Shared Service Center B.V.
Krijgsman 1
1186 DM Amstelveen
The Netherlands

or can be requested at our dedicated DoC website:

<http://www.lg.com/global/support/cedoc/cedoc#>

This device is a 2.4 GHz wideband transmission system, intended for use in all EU member states and EFTA countries.

POWER: This unit operates on a mains supply of 200-240V~, 50/60Hz.

Wiring: This unit is supplied with a BS 1363 approved main plug. When replacing the fuse, always use of the same rating approved to BS 1362. Never use this plug with the fuse cover omitted. To obtain a replacement fuse cover contact your dealer. If the type of plug supplied is not suitable for the mains sockets in your home, then the plug should be removed and a suitable type fitted. Please refer to the wiring instructions below:

Warning: A mains plug removed from the mains lead of this unit must be destroyed. A mains plug with bared wires is hazardous if inserted in a mains socket. Do not connect either wire to the earth pin, marked with the letter E or with the earth symbol \perp or coloured green or green and yellow. If any other plug is fitted, use same rating of fuse in the plug.

Important: The wires in this mains lead are coloured in accordance with the following codes:

- **BLUE: NEUTRAL, BROWN: LIVE** - As the colours of the wires in the mains lead of this unit may not correspond with the coloured marking identifying the terminals in your plug, proceed as follows: The wire which is coloured blue must be connected to the terminal which is marked with the letter N or coloured black. The wire which is coloured brown must be connected to the terminal which is marked with the letter L or coloured red.



Technology with the human touch GUARANTEE

- LG Electronics U.K. Ltd. will provide the following services in order to expedite this Guarantee.
- 1. All faulty components which fail due to defective manufacture will be replaced free of charge for a period of 12 months from the original date of purchase.
- 2. The dealer (or his service agent) who sold the product will be reimbursed for any labour provided in the repair of this LG equipment, for a period of 12 months from the original date of purchase. These claims must be made in accordance with the published scale of service charges and relevant claims procedure.

PLEASE NOTE:

- A. The dealer may restrict the guarantee to the original purchaser.
- B. The dealer is not obliged to carry out service under guarantee if unauthorized modifications are made to the apparatus, or if non standard components are used or if the serial number of the apparatus is removed, defaced, misused, or altered.
- C. Any claims made under guarantee must be directed to the dealer from whom the equipment was originally purchased. The dealer may, before carrying out service under guarantee, require a receipted account as evidence of the date of purchase.
- D. We respectfully point out that your dealer is not obligated to replace batteries if they become exhausted or worn in use.
- E. Aerial alignment and consumer control adjustments are not covered by this guarantee.

This guarantee does not affect your statutory rights.

- REQUIREMENTS TO MAINTAIN WARRANTY COVERAGE:
RETAIN YOUR RECEIPT TO PROVE DATE OF PURCHASE. A COPY OF YOUR RECEIPT MUST BE SURRENDERED AT THE TIME GUARANTEE SERVICE IS PROVIDED.
- Product Registration Card :
It is helpful to complete at least your name, address, phone, model & serial numbers and return it. This will enable LG to assist you in the future should you lose your receipt, your units be stolen, or should modifications be necessary.
- To obtain information or assistance:
Call UK: 0344 847 5454 IE: 01 686 9454

MODEL NO.*	SERIAL NO.*	DATE OF PURCHASE.*

In all cases of difficulty - consult your LG dealer from whom the product was purchased

LGEUK Website : www.lg.com/uk
(Service website : www.lg.com/uk/support)

